

Acta Crystallographica Section E

## Structure Reports

Online

ISSN 1600-5368

**rac-3,4-trans-Dichloro-1,2,3,4-tetrahydro-2-naphthyl acetate**

Ertan Şahin,\* Nurhan Kishali and Yunus Kara

Department of Chemistry, Faculty of Science, Atatürk University, 25240-Erzurum, Turkey

Correspondence e-mail: ertan@atauni.edu.tr

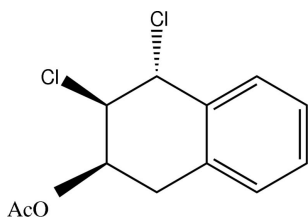
Received 10 July 2008; accepted 30 October 2008

Key indicators: single-crystal X-ray study;  $T = 293$  K; mean  $\sigma(\text{C}-\text{C}) = 0.003$  Å;  $R$  factor = 0.063;  $wR$  factor = 0.154; data-to-parameter ratio = 24.8.

The title compound,  $\text{C}_{12}\text{H}_{12}\text{Cl}_2\text{O}_2$ , has a bicyclic skeleton containing cyclohexene and benzene fragments. The cyclohexene ring adopts a half-chair conformation with displacements of two atoms out of the least-squares plane of 0.311 (2) and  $-0.336$  (2) Å. The Cl atoms are *trans*-positioned.

## Related literature

For related literature, see: Frimer (1985*a,b*); March & Smith (2001); McBride *et al.* (1999); Metha & Ramesh (2003, 2005); Metha *et al.* (2003); Patai (1983); Ros *et al.* (2006); Wasserman & Murray (1979). For related structures, see: Kishali *et al.* (2006*a,b*).



## Experimental

## Crystal data

$\text{C}_{12}\text{H}_{12}\text{Cl}_2\text{O}_2$   
 $M_r = 259.12$   
 Monoclinic,  $P2_1/c$   
 $a = 12.931$  (5) Å  
 $b = 12.478$  (5) Å  
 $c = 7.441$  (4) Å  
 $\beta = 101.040$  (5)°

$V = 1178.4$  (9) Å<sup>3</sup>  
 $Z = 4$   
 Mo  $K\alpha$  radiation  
 $\mu = 0.53$  mm<sup>-1</sup>  
 $T = 293$  (2) K  
 $0.2 \times 0.2 \times 0.2$  mm

## Data collection

Rigaku R-AXIS conversion diffractometer  
 Absorption correction: multi-scan (Blessing, 1995)  
 $T_{\min} = 0.897$ ,  $T_{\max} = 0.898$   
 34473 measured reflections

3627 independent reflections  
 2486 reflections with  $I > 2\sigma(I)$   
 $R_{\text{int}} = 0.083$   
 25 standard reflections every 200 reflections  
 intensity decay: 3%

## Refinement

$R[F^2 > 2\sigma(F^2)] = 0.063$   
 $wR(F^2) = 0.154$   
 $S = 1.09$   
 3627 reflections

146 parameters  
 H-atom parameters constrained  
 $\Delta\rho_{\max} = 0.21$  e Å<sup>-3</sup>  
 $\Delta\rho_{\min} = -0.34$  e Å<sup>-3</sup>

Data collection: *CrystalClear* (Rigaku/MSC, 2005); cell refinement: *CrystalClear*; data reduction: *CrystalClear*; program(s) used to solve structure: *SHELXS97* (Sheldrick, 2008); program(s) used to refine structure: *SHELXL97* (Sheldrick, 2008); molecular graphics: *ORTEP-3 for Windows* (Farrugia, 1997); software used to prepare material for publication: *WinGX* (Farrugia, 1999).

The authors are indebted to the Department of Chemistry and Atatürk University, Turkey, for the use of the X-ray diffractometer purchased under grant No. 2003/219 from the University Research Fund.

Supplementary data and figures for this paper are available from the IUCr electronic archives (Reference: KP2181).

## References

- Blessing, R. H. (1995). *Acta Cryst.* **A51**, 33–38.  
 Farrugia, L. J. (1997). *J. Appl. Cryst.* **30**, 565.  
 Farrugia, L. J. (1999). *J. Appl. Cryst.* **32**, 837–838.  
 Frimer, A. A. (1985*a*). *Singlet Oxygen*, Vol. II, Part 1. Boca Raton: CRC Press.  
 Frimer, A. A. (1985*b*). *Singlet Oxygen*, Vol. III, Part 2. Boca Raton: CRC Press.  
 Kishali, N., Sahin, E. & Kara, Y. (2006*a*). *Org. Lett.* **2006**, 60, 1791–1793.  
 Kishali, N., Sahin, E. & Kara, Y. (2006*b*). *Helv. Chim. Acta*, **89**, 1246–1253.  
 March, J. & Smith, M. B. (2001). *Advanced Organic Chemistry*. New York: John Wiley and Sons.  
 McBride, C. M., Chrisman, W., Harris, C. E. & Singaram, B. (1999). *Tetrahedron Lett.* **40**, 45–48.  
 Metha, G. & Ramesh, S. S. (2003). *Tetrahedron Lett.* **44**, 3105–3108.  
 Metha, G. & Ramesh, S. S. (2005). *Eur. J. Org. Chem.* pp. 2225–2238.  
 Metha, G., Ramesh, S. S. & Bera, M. K. (2003). *Chem. Eur. J.* **9**, 2264–2272.  
 Patai, S. (1983). Editor. *The Chemistry of Functional Groups, Peroxides*. New York: Wiley.  
 Rigaku/MSC (2005). *CrystalClear*. Rigaku/MSC, The Woodlands, Texas, USA.  
 Ros, A., Magriz, A., Dietrich, H., Fernandez, R., Alvarez, E. & Lassaletta, J. M. (2006). *Org. Lett.* **8**, 127–130.  
 Sheldrick, G. M. (2008). *Acta Cryst.* **A64**, 112–122.  
 Wasserman, H. H. & Murray, W. M. (1979). Editors. *Singlet Oxygen*. New York: Academic Press.

**supplementary materials**

*Acta Cryst.* (2008). E64, o2269 [ doi:10.1107/S1600536808035563 ]

## ***rac*-3,4-*trans*-Dichloro-1,2,3,4-tetrahydro-2-naphthyl acetate**

**E. Sahin, N. Kishali and Y. Kara**

### **Comment**

Oxyfunctionalization of organic unsaturated molecules are efficiently performed by an oxygen atom. It has been reported that the main reactions of singlet oxygen are cycloaddition and ene-reaction (Frimer, 1985*a,b*; Patai 1983; Wasserman & Murray, 1979). We have successively used isotetralin (1,4,5,8-tetrahydronaphthalene) for a short and stereocontrolled synthesis of a new class of bis-endoperoxide (Kishali *et al.*, 2006*a*) and the interesting chlorination product, (2*S*\*,3*S*\*,4*S*\*)-3,4-dichloro-1,2,3,4,5,8-hexahydro naphthalen-2-yl acetate (Kishali *et al.*, 2006*b*), *cf.* Fig. 3). A multistep procedure for the preparation of a new family of annulated inositols from tetrahydronaphthalene has been developed (Metha & Ramesh, 2003, 2005; Metha *et al.*, 2003). Vicinal halohydrins are versatile building blocks and key intermediates for the synthesis of many bioactive molecules (Ros *et al.*, 2006).

We aimed to synthesize the polyhydroxyhalohidrins from (2*S*\*, 3*S*\*, 4*S*\*)-3, 4-dichloro-1, 2, 3, 4, 5, 8-hexahydronaphthalen-2-yl acetate with KMnO<sub>4</sub>, but reaction of (2*S*\*, 3*S*\*, 4*S*\*)-3, 4-dichloro-1, 2, 3, 4, 5, 8-hexahydronaphthalen-2-yl acetate with KMnO<sub>4</sub> gave a very interesting and unexpected product (I) including an aromatic ring.

Potassium permanganate, a very oxidizing agent can be used to oxidize alkenes to diols (March & Smith, 2001). Limiting the reaction to hydroxylation alone is often difficult, and it is usually attempted by using a cold, diluted and basic KMnO<sub>4</sub> solution. Potassium permanganate, when supported on alumina and used in acetone, reacts very differently than potassium permanganate in aqueous solution. The synthesis of benzene derivatives from 1,4-cyclohexadienes by using KMnO<sub>4</sub>—Al<sub>2</sub>O<sub>3</sub> is already known in the literature (McBride *et al.*, 1999). (2*S*\*, 3*S*\*, 4*S*\*)-3, 4-dichloro-1, 2, 3, 4, 5, 8-hexahydronaphthalen-2-yl acetate was synthesized as described in the literature (Kishali *et al.*, 2006*b*). We expected the formation of a diol from reaction of (2*S*\*, 3*S*\*, 4*S*\*)-3, 4-dichloro-1, 2, 3, 4, 5, 8-hexahydronaphthalen-2-yl acetate with KMnO<sub>4</sub>, but instead the formation of (I) was detected.

The bicyclic skeleton contains a cyclohexene and a benzene ring sharing a common C?C bond [C1—C6=1.400 (3) Å] (Fig. 1). The Cl atoms are *trans*-positioned. C10—C11 and C9—C12 bond lengths are 1.827 (3) and 1.802 (3) Å, respectively. The three stereogenic centres C2, C3, and C4 are of the same configuration; during crystallization the racemization occurred. All these values are comparable with our previous structure (C<sub>12</sub>H<sub>14</sub>O<sub>2</sub>Cl<sub>2</sub>) (Kishali *et al.*, 2006*b*), in which, only the difference, hexadien moiety exists instead of benzene in the carbocyclic ring. Crystal packing is dominated by van der Waals contacts.

### **Experimental**

3,4-Dichloro-1, 2, 3, 4-tetrahydro-naphthalen-2-yl acetate was prepared as follows. To a magnetically stirred acetone solution (25 ml of (2*S*\*, 3*S*\*, 4*S*\*)-3, 4-dichloro-1, 2, 3, 4, 5, 8-hexahydronaphthalen-2-yl acetate (260 mg, 1 mmol) was added a solution of KMnO<sub>4</sub> (158 mg, 1 mmol) and MgSO<sub>4</sub> (144 mg, 1.2 mmol) in water (20 ml) at 253 K during 5 h. After the addition was completed, the reaction mixture was stirred for an additional 15 h at the given temperature and then filtered. The

## supplementary materials

filtrate was concentrated to 20 ml by evaporation. The aqueous solution was extracted with ethyl acetate (3x30 ml) and the extract were dried (Na<sub>2</sub>SO<sub>4</sub>). Evaporation of the solvent gave racemic mixture of compound I. It was separated by column chromatography, eluting with ethylacetate/hexanes (120 mg, 42%, colourless solid). Colourless solid from CH<sub>2</sub>Cl<sub>2</sub>/hexane. m. p: 348–349 K. <sup>1</sup>H-NMR (400 MHz, CDCl<sub>3</sub>, p.p.m.): 7.39–7.12 (m, 4H), 5.78 (m, 1H-C<sub>(2)</sub>), 5.35 (d, J = 3.3, 1H-C<sub>(4)</sub>), 4.74 (t, J = 2.9, 1H-C<sub>(3)</sub>), 3.2 (m, 2H-C<sub>(1)</sub>), 2.14 (s, 3H-C<sub>(Ac)</sub>). <sup>13</sup>C-NMR (100 MHz, CDCl<sub>3</sub>, p.p.m.): 170.4, 132.9, 131.7, 130.9, 129.5, 129.3, 127.6, 67.3, 61.3, 60.1, 30.2, 30.0, 21.3. calcd C 55.62, H 4.67; found C 55.87, H 4.89.

### Refinement

H atoms were placed in geometrically idealized positions (C—H=0.93–0.98 Å) and treated as riding, with  $U_{\text{iso}}(\text{H})=1.2U_{\text{eq}}(\text{C})$  (for methine and methylene) or  $1.5U_{\text{eq}}(\text{methyl C})$ .

### Figures

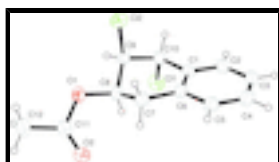


Fig. 1. Molecular structure of I with the atom-numbering scheme. The displacement ellipsoids are drawn at the 50% probability level.

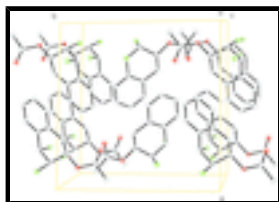


Fig. 2. A packing diagram. H atoms have been omitted for clarity.



Fig. 3. The preparation of the title compound.

### rac-3,4-trans-Dichloro-1,2,3,4-tetrahydro-2-naphthyl acetate

#### Crystal data

C<sub>12</sub>H<sub>12</sub>Cl<sub>2</sub>O<sub>2</sub>

$M_r = 259.12$

Monoclinic,  $P2_1/c$

Hall symbol: -P 2ybc

$a = 12.931 (5) \text{ \AA}$

$b = 12.478 (5) \text{ \AA}$

$c = 7.441 (4) \text{ \AA}$

$\beta = 101.040 (5)^\circ$

$V = 1178.4 (9) \text{ \AA}^3$

$Z = 4$

$F(000) = 536$

$D_x = 1.461 \text{ Mg m}^{-3}$

Mo  $K\alpha$  radiation,  $\lambda = 0.71073 \text{ \AA}$

Cell parameters from 6382 reflections

$\theta = 2.3\text{--}30.6^\circ$

$\mu = 0.53 \text{ mm}^{-1}$

$T = 293 \text{ K}$

Needle, pale white

$0.2 \times 0.2 \times 0.2 \text{ mm}$

*Data collection*

Rigaku R-Axis conversion diffractometer	$R_{\text{int}} = 0.083$
dtprofit.ref scans	$\theta_{\text{max}} = 30.7^\circ$ , $\theta_{\text{min}} = 2.3^\circ$
Absorption correction: multi-scan (Blessing, 1995)	$h = -18 \rightarrow 18$
$T_{\text{min}} = 0.897$ , $T_{\text{max}} = 0.898$	$k = -17 \rightarrow 17$
34473 measured reflections	$l = -10 \rightarrow 10$
3627 independent reflections	25 standard reflections every 200 reflections
2486 reflections with $I > 2\sigma(I)$	intensity decay: 3%

*Refinement*

Refinement on $F^2$	0 restraints
Least-squares matrix: full	H-atom parameters constrained
$R[F^2 > 2\sigma(F^2)] = 0.063$	$w = 1/[\sigma^2(F_o^2) + (0.0549P)^2 + 0.2956P]$
$wR(F^2) = 0.154$	where $P = (F_o^2 + 2F_c^2)/3$
$S = 1.09$	$(\Delta/\sigma)_{\text{max}} < 0.001$
3627 reflections	$\Delta\rho_{\text{max}} = 0.21 \text{ e } \text{\AA}^{-3}$
146 parameters	$\Delta\rho_{\text{min}} = -0.34 \text{ e } \text{\AA}^{-3}$

*Special details*

**Geometry.** All e.s.d.'s (except the e.s.d. in the dihedral angle between two l.s. planes) are estimated using the full covariance matrix. The cell e.s.d.'s are taken into account individually in the estimation of e.s.d.'s in distances, angles and torsion angles; correlations between e.s.d.'s in cell parameters are only used when they are defined by crystal symmetry. An approximate (isotropic) treatment of cell e.s.d.'s is used for estimating e.s.d.'s involving l.s. planes.

*Fractional atomic coordinates and isotropic or equivalent isotropic displacement parameters ( $\text{\AA}^2$ )*

	<i>x</i>	<i>y</i>	<i>z</i>	$U_{\text{iso}}^*/U_{\text{eq}}$
C11	0.22319 (6)	0.59964 (5)	0.18471 (9)	0.0666 (2)
C12	0.12465 (5)	0.59224 (5)	0.70388 (10)	0.0667 (2)
O1	0.13535 (12)	0.35895 (13)	0.5577 (2)	0.0535 (4)
O2	0.23303 (14)	0.22818 (15)	0.4683 (3)	0.0722 (5)
C1	0.34102 (17)	0.62147 (18)	0.5296 (3)	0.0486 (5)
C2	0.40917 (19)	0.7052 (2)	0.5078 (3)	0.0580 (6)
H2	0.3843	0.7623	0.4315	0.07*
C3	0.5123 (2)	0.7044 (2)	0.5973 (4)	0.0646 (7)
H3	0.5573	0.7601	0.5804	0.078*
C4	0.5489 (2)	0.6200 (2)	0.7129 (4)	0.0636 (7)
H4	0.6184	0.6197	0.7756	0.076*
C5	0.48316 (19)	0.5365 (2)	0.7357 (3)	0.0577 (6)
H5	0.5089	0.4802	0.8135	0.069*
C6	0.37804 (17)	0.53492 (18)	0.6436 (3)	0.0478 (5)

## supplementary materials

---

C7	0.30921 (18)	0.44074 (19)	0.6704 (3)	0.0533 (5)
H7A	0.3489	0.3748	0.6696	0.064*
H7B	0.2883	0.4467	0.7884	0.064*
C8	0.21251 (17)	0.43671 (18)	0.5214 (3)	0.0483 (5)
H8	0.2343	0.4166	0.4069	0.058*
C9	0.15676 (17)	0.54420 (18)	0.4929 (3)	0.0496 (5)
H9	0.0921	0.5369	0.4005	0.06*
C10	0.22906 (18)	0.62559 (18)	0.4281 (3)	0.0512 (5)
H10	0.2012	0.6975	0.4416	0.061*
C11	0.15545 (19)	0.25602 (19)	0.5198 (3)	0.0546 (6)
C12	0.0677 (2)	0.1837 (2)	0.5466 (4)	0.0707 (7)
H12A	0.0407	0.2066	0.6519	0.106*
H12B	0.0934	0.1116	0.5648	0.106*
H12C	0.0124	0.1865	0.4402	0.106*

### Atomic displacement parameters ( $\text{\AA}^2$ )

	$U^{11}$	$U^{22}$	$U^{33}$	$U^{12}$	$U^{13}$	$U^{23}$
C11	0.0761 (5)	0.0694 (4)	0.0518 (4)	-0.0055 (3)	0.0059 (3)	0.0081 (3)
C12	0.0632 (4)	0.0683 (4)	0.0735 (5)	0.0053 (3)	0.0256 (3)	-0.0070 (3)
O1	0.0468 (9)	0.0490 (9)	0.0664 (10)	-0.0052 (7)	0.0152 (8)	0.0032 (7)
O2	0.0656 (11)	0.0582 (11)	0.0966 (15)	-0.0020 (9)	0.0247 (10)	-0.0128 (10)
C1	0.0485 (12)	0.0474 (11)	0.0511 (12)	-0.0018 (9)	0.0125 (10)	-0.0053 (9)
C2	0.0639 (15)	0.0509 (13)	0.0615 (14)	-0.0085 (11)	0.0179 (12)	-0.0030 (11)
C3	0.0614 (15)	0.0659 (16)	0.0701 (16)	-0.0204 (12)	0.0216 (13)	-0.0162 (13)
C4	0.0460 (13)	0.0794 (18)	0.0653 (16)	-0.0074 (12)	0.0108 (12)	-0.0163 (13)
C5	0.0487 (13)	0.0634 (15)	0.0601 (14)	0.0002 (11)	0.0082 (11)	-0.0047 (11)
C6	0.0444 (11)	0.0518 (12)	0.0482 (12)	-0.0019 (9)	0.0114 (9)	-0.0028 (9)
C7	0.0474 (12)	0.0509 (12)	0.0605 (14)	0.0011 (10)	0.0076 (11)	0.0062 (11)
C8	0.0430 (11)	0.0455 (11)	0.0579 (13)	-0.0031 (9)	0.0131 (10)	0.0016 (10)
C9	0.0438 (11)	0.0513 (12)	0.0532 (12)	0.0022 (9)	0.0083 (10)	-0.0018 (10)
C10	0.0533 (13)	0.0455 (11)	0.0544 (13)	0.0019 (9)	0.0094 (10)	0.0015 (10)
C11	0.0545 (13)	0.0508 (13)	0.0566 (14)	-0.0052 (10)	0.0055 (11)	0.0025 (10)
C12	0.0676 (16)	0.0600 (16)	0.0823 (19)	-0.0171 (13)	0.0092 (14)	0.0069 (14)

### Geometric parameters ( $\text{\AA}$ , $^\circ$ )

C11—C10	1.827 (3)	C7—H7A	0.97
C12—C9	1.802 (3)	C7—H7B	0.97
O1—C11	1.351 (3)	C8—H8	0.98
O1—C8	1.454 (3)	C10—H10	0.98
C9—C8	1.518 (3)	C4—C5	1.376 (4)
C9—C10	1.520 (3)	C4—C3	1.385 (4)
C9—H9	0.98	C4—H4	0.93
C6—C1	1.400 (3)	C5—H5	0.93
C6—C5	1.401 (3)	C2—C3	1.372 (4)
C6—C7	1.510 (3)	C2—H2	0.93
C1—C2	1.396 (3)	C3—H3	0.93
C1—C10	1.500 (3)	C12—H12A	0.96

O2—C11	1.192 (3)	C12—H12B	0.96
C11—C12	1.493 (3)	C12—H12C	0.96
C7—C8	1.504 (3)		
C11—O1—C8	115.45 (18)	C7—C8—H8	108.2
C8—C9—C10	109.28 (18)	C9—C8—H8	108.2
C8—C9—C12	110.77 (17)	C1—C10—C9	114.21 (19)
C10—C9—C12	108.22 (16)	C1—C10—C11	110.26 (16)
C8—C9—H9	109.5	C9—C10—C11	106.55 (16)
C10—C9—H9	109.5	C1—C10—H10	108.6
C12—C9—H9	109.5	C9—C10—H10	108.6
C1—C6—C5	118.2 (2)	C11—C10—H10	108.6
C1—C6—C7	122.58 (19)	C5—C4—C3	120.4 (2)
C5—C6—C7	119.2 (2)	C5—C4—H4	119.8
C2—C1—C6	119.8 (2)	C3—C4—H4	119.8
C2—C1—C10	119.1 (2)	C4—C5—C6	121.0 (2)
C6—C1—C10	121.1 (2)	C4—C5—H5	119.5
O2—C11—O1	123.5 (2)	C6—C5—H5	119.5
O2—C11—C12	125.1 (2)	C3—C2—C1	121.0 (2)
O1—C11—C12	111.4 (2)	C3—C2—H2	119.5
C8—C7—C6	110.88 (19)	C1—C2—H2	119.5
C8—C7—H7A	109.5	C2—C3—C4	119.5 (2)
C6—C7—H7A	109.5	C2—C3—H3	120.3
C8—C7—H7B	109.5	C4—C3—H3	120.3
C6—C7—H7B	109.5	C11—C12—H12A	109.5
H7A—C7—H7B	108.1	C11—C12—H12B	109.5
O1—C8—C7	112.88 (18)	H12A—C12—H12B	109.5
O1—C8—C9	106.93 (17)	C11—C12—H12C	109.5
C7—C8—C9	112.26 (19)	H12A—C12—H12C	109.5
O1—C8—H8	108.2	H12B—C12—H12C	109.5
C5—C6—C1—C2	1.2 (3)	C2—C1—C10—C9	-167.4 (2)
C7—C6—C1—C2	-178.7 (2)	C6—C1—C10—C9	13.3 (3)
C5—C6—C1—C10	-179.4 (2)	C2—C1—C10—C11	72.7 (2)
C7—C6—C1—C10	0.6 (3)	C6—C1—C10—C11	-106.6 (2)
C8—O1—C11—O2	3.4 (3)	C8—C9—C10—C1	-43.7 (3)
C8—O1—C11—C12	-175.2 (2)	C12—C9—C10—C1	77.0 (2)
C1—C6—C7—C8	17.2 (3)	C8—C9—C10—C11	78.3 (2)
C5—C6—C7—C8	-162.8 (2)	C12—C9—C10—C11	-161.00 (12)
C11—O1—C8—C7	-79.8 (2)	C3—C4—C5—C6	-0.2 (4)
C11—O1—C8—C9	156.3 (2)	C1—C6—C5—C4	-1.0 (3)
C6—C7—C8—O1	-170.16 (18)	C7—C6—C5—C4	179.0 (2)
C6—C7—C8—C9	-49.2 (3)	C6—C1—C2—C3	-0.3 (4)
C10—C9—C8—O1	-172.10 (18)	C10—C1—C2—C3	-179.6 (2)
C12—C9—C8—O1	68.8 (2)	C1—C2—C3—C4	-0.9 (4)
C10—C9—C8—C7	63.6 (2)	C5—C4—C3—C2	1.2 (4)
C12—C9—C8—C7	-55.5 (2)		

Fig. 1

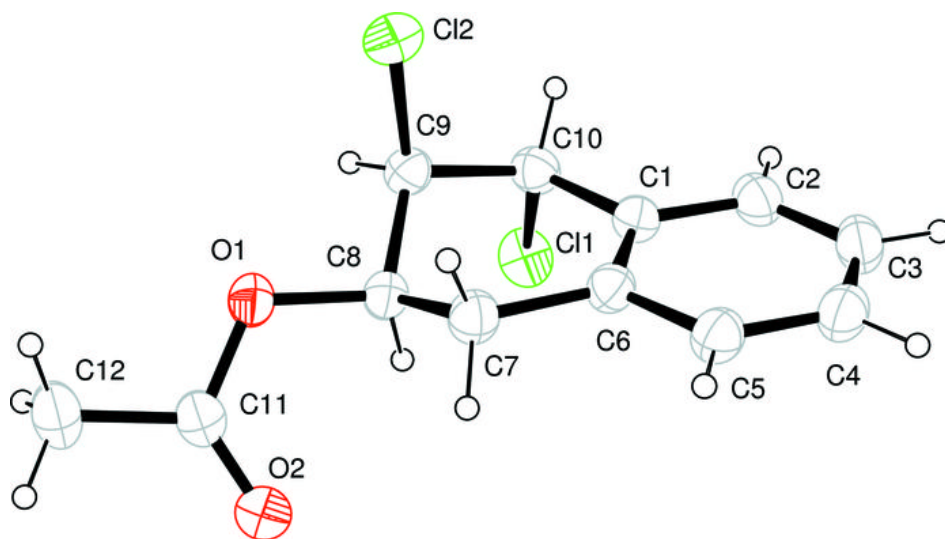




Fig. 2

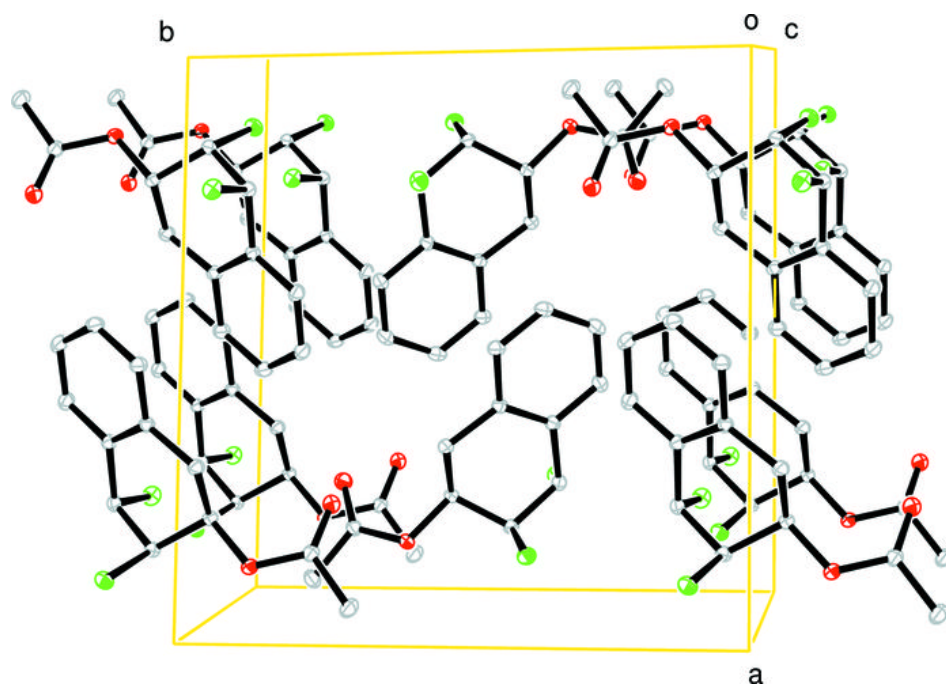


Fig. 3

