

Relation of high neuroticism with increased methylation of the BDNF gene

Toshinori Shirata¹
Akihito Suzuki¹
Yoshihiko Matsumoto¹
Nana Takahashi¹
Keisuke Noto¹
Kaoru Goto²
Koichi Otani¹

¹Department of Psychiatry, Yamagata University School of Medicine, Yamagata, Japan; ²Department of Anatomy and Cell Biology, Yamagata University School of Medicine, Yamagata, Japan

Background: Brain-derived neurotrophic factor (BDNF) is a neurotrophin that has an important function in neuroplasticity and neuronal development. It is suggested that increased methylation of the BDNF gene resulting in decreased BDNF activity is associated with depression. Meanwhile, neuroticism is a well-known risk factor for developing depression. In the present study, the relationship between methylation of the BDNF gene and personality traits including neuroticism was examined.

Subjects and methods: The subjects were 98 healthy Japanese. Methylation levels of the BDNF gene were determined by the bisulfite-pyrosequencing method. Personality traits including neuroticism were assessed by the NEO Personality Inventory-Revised.

Results: There was a positive correlation between neuroticism scores and methylation levels of the BDNF gene. The subjects with higher neuroticism scores had higher levels of BDNF gene methylation compared with those with lower neuroticism scores. Meanwhile, other personality traits were not associated with BDNF gene methylation.

Conclusion: The present study suggests that high neuroticism is related to increased methylation of the BDNF gene.

Keywords: BDNF, depression, epigenetics, methylation, neuroticism

Introduction

Epigenetics is defined as heritable changes in gene activity and expression that occur without alteration in DNA sequence.¹ These non-genetic alternations are regulated by two major mechanisms, ie, DNA methylation and histone modification.² DNA methylation occurs through the addition of a methyl group to cytosines mainly at the cytosine-guanine dinucleotides (CG sites). In mice and humans, most of the CG sites in the promoter regions exist mostly in an unmethylated form.² When these CG sites are methylated, the onset of transcription and gene expression is prevented.¹

Brain-derived neurotrophic factor (BDNF) is a member of the neurotrophin family that serves an important function in neural differentiation, survival of nerve cells and synaptic plasticity.^{3,4} In BDNF transgenic mice, decreased BDNF activity is associated with reduced hippocampal volume and increased anxiety-related behaviors.⁴ In humans, decreased BDNF activity is related to small hippocampal volume and poor hippocampal-dependent learning.^{3,5} A meta-analysis shows that low blood levels of BDNF are associated with psychiatric disorders such as depression.⁶ Meanwhile, recent epigenetic studies demonstrate that increased methylation of the BDNF gene causes decreased BDNF synthesis in neurons.⁷ Furthermore, an extensive review suggests that BDNF gene methylation is increased in depressed patients compared to controls.⁸ These findings suggest that increased methylation of the BDNF gene resulting in

Correspondence: Akihito Suzuki
Department of Psychiatry, Yamagata University School of Medicine, 2-2-2 Iida-Nishi, Yamagata 990-9585, Japan
Tel +81 23 628 5322
Fax +81 23 628 5325
Email suzukiakihito@hotmail.com

decreased BDNF activity is at least partly implicated in the pathogenesis of depression.

Neuroticism is a tendency to cope poorly with stress and to experience negative effects such as fear, sadness, embarrassment, anger, guilt and disgust.⁹ This personality trait constitutes one of the five factors in the Big Five model of personality.⁹ The other four personality traits are extraversion (a tendency to engage the environment and other people with vigor and enthusiasm), openness to experience (a tendency to be broad, deep and complex in mental and experiential life), agreeableness (a tendency to be altruistic and sympathetic to others and eager to help them) and conscientiousness (a tendency to approach tasks in a planful and deliberate manner and to be reliable and self-disciplined). Extensive reviews strongly suggest that high neuroticism is a prospective predictor of clinical depression in general populations.^{10,11} A complex interaction between this personality trait and life stressors, ie, the diathesis–stress mechanism, is involved in the process from high neuroticism to the development of depression. Additionally, one study suggests that low extraversion carries the risk for new-onset depression, though to a lesser degree than high neuroticism.¹² Furthermore, a possibility is pointed out that low extraversion and low conscientiousness, by interacting with high neuroticism, also contribute to the onset of depression.¹⁰

As mentioned previously, each of increased BDNF gene methylation and neuroticism has been reported to be closely associated with depression. Furthermore, our previous study suggests that decreased BDNF function is related to high harm avoidance and low self-directedness, personality traits connected with neuroticism.¹³ It is also demonstrated that lower serum BDNF levels are inversely related to neuroticism.¹⁴ These findings point to the possibility that neuroticism is related to increased methylation of the BDNF gene. Therefore, we examined the relationship between methylation levels of the BDNF gene and personality traits including neuroticism.

Subjects and methods

Subjects

The subjects were 98 Japanese medical students from Yamagata University School of Medicine. The exclusion criteria were the presence of serious physical diseases and current or past Axis I psychiatric disorders of the *Diagnostic and Statistical Manual of Mental Disorders-IV*.¹⁵ As it is reported that BDNF gene methylation and some personality traits are influenced by age,^{16,17} the subjects in a narrow age range (22–23 years old) were enrolled. Males and females

were equal in number. The mean±SD of body mass index (BMI) was 21.0±2.5 kg/m². The Ethics Committee of Yamagata University School of Medicine approved the protocol of this study. After complete explanation of the study, written informed consent was obtained from all subjects.

Assessment of personality traits

Assessment of personality traits was performed using the Japanese version of the NEO Personality Inventory-Revised (NEO PI-R).^{9,18} This Japanese version has high reliability and validity.¹⁸ The NEO PI-R is a self-report scale with five subscales to measure the Big Five personality traits, ie, neuroticism, extraversion, openness to experience, agreeableness and conscientiousness.⁹ Each subscale is composed of 48 items, resulting in total of 240 items. Respondents rate how true the items are about themselves on a Likert scale ranging from 1 (strongly disagree) to 5 (strongly agree).

Analysis of BDNF gene methylation

Ten milliliters of blood was obtained from subjects' median vein in a EDTA-containing tube. Genomic DNA was extracted from peripheral leukocytes using a QIAamp DNA Blood Kit (Qiagen, Tokyo, Japan). DNA concentrations were measured using a Qubit dsDNA BR Assay Kits (Thermo Fisher Scientific K.K., Tokyo, Japan), and genomic DNA was stored at –80°C until analysis. Martinowich et al showed that the promoter IV region of the BDNF gene has the cAMP response element-binding protein (CREB)-binding site and that the methylation of this region affects CREB binding and consequent transcription.⁷ Meanwhile, Kundakovic et al showed that in mice the administration of bisphenol A, a model of early life adversity, induces increased methylation of the two CG sites in this region and reduces BDNF expression.¹⁹ They also demonstrated that methylation of these CG sites is increased in pregnant mothers with higher urine levels of bisphenol A. Therefore, we measured methylation levels of these CG sites in the present study.

Pyrosequencing analysis of bisulfite-converted genomic DNA was performed by EpigenDx Inc. (Worcester, MA, USA), with the assay ID ADS221-FS2re and ADS221-FS3. The examined region of the promoter IV of the BDNF gene is located on the coordinates Chr11: 27723159-27723246 (University of California, Santa Cruz Genome Browser, Human February 2009, GRCh37/hg19) (Figure 1). The methylation status of each CG sites was determined individually as an artificial C/T SNP using QCpG software (Pyrosequencing, Qiagen). Methylation levels of each CG site were calculated as the percentage of the methylated alleles divided by the sum

Table 2 Correlations among NEO PI-R scores, BMI and the BDNF gene methylation levels

	1	2	3	4	5	6	7	8
1. Neuroticism								
2. Extraversion	-0.372							
3. Openness to experience	0.046	0.312**						
4. Agreeableness	-0.326**	0.021	0.074					
5. Conscientiousness	-0.448**	0.420**	0.169	0.315**				
6. BMI	0.075	-0.204*	-0.205*	-0.165	-0.286			
7. Methylation of 1st CG site	0.230*	-0.069	0.149	0.132	-0.011	-0.044		
8. Methylation of 2nd CG site	-0.151	0.048	0.026	0.031	0.118	-0.097	0.295**	
9. Mean of 1st and 2nd CG sites	0.150	-0.042	0.137	0.126	0.047	-0.068	0.956**	0.562**

Notes: The figures on the table show Pearson's correlation coefficients. * $p < 0.05$, ** $p < 0.01$.

Abbreviations: BDNF, brain-derived neurotrophic factor; BMI, body mass index; NEO PI-R, NEO Personality Inventory-Revised.

Twin studies show that about 40% of the variability in neuroticism is attributed to genetic factors and the rest to environmental factors.²¹ In line with this, our previous study suggests that a dysfunctional parenting style induces increased neuroticism.²² On the other hand, it is shown that

caregiver maltreatment induces increased BDNF gene methylation in prefrontal cortex, amygdala and hippocampus of rats.²³ In addition, individuals who received childhood abuse or low maternal care show increases in BDNF gene methylation in lymphocytes.^{24,25} These studies on the epigenetics of BDNF and our present study collectively suggest that high neuroticism is at least partly ascribable to increased BDNF gene methylation resulting from negative experiences in early life. Incidentally, there is a possibility that this association is mediated by reduced hippocampal volume, a putative neuroanatomical basis of high neuroticism.²⁶

Second, further increases in methylation of the BDNF gene resulting from high neuroticism may be implicated in the process from high neuroticism to the onset of depression. It is demonstrated that individuals high in neuroticism are likely to experience stressful life events.²⁷ On the other hand, negative life events are shown to induce within-subject increases in neuroticism.²⁸ Here, a vicious circle may be formed between stress and neuroticism. This vicious circle may lead to marked increases in BDNF gene methylation and decreased blood levels of BDNF observed in depressed patients.^{6,8} It is noteworthy that one study suggests that an interaction between altered BDNF function by the Val66Met genotype and neuroticism levels predicts future life stressors.²⁹ This study at least partly supports our contention that there is a vicious circle among altered BDNF function by methylation, neuroticism and stress.

Finally, in the present study, extraversion, openness to experience, agreeableness and conscientiousness were not associated with methylation of the BDNF gene. This result appears to be reasonable, since there is no or weak evidence that these personality traits are independent predictors of depression.^{10,12}

The present study has several limitations. First, methylation status of a neutral control gene was not analyzed.

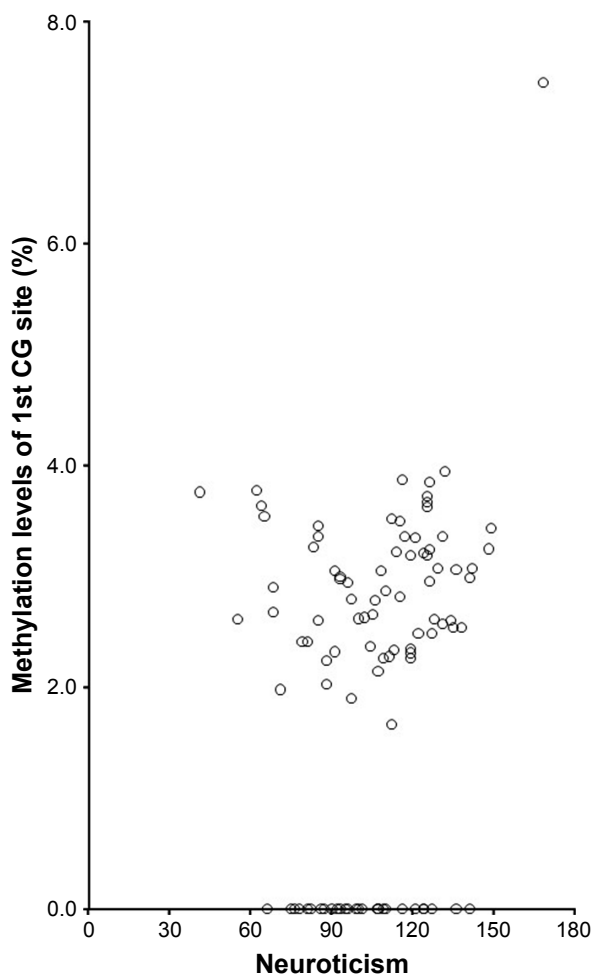


Figure 2 Relationship between neuroticism and methylation levels of the 1st CG site of the BDNF gene.

Abbreviation: BDNF, brain-derived neurotrophic factor.

Table 3 Effects of NEO PI-R scores and sex on methylation levels of the BDNF gene

	Male	Female	F value		
			NEO PI-R	Sex	NEO PI-R × sex
1st CG site, low vs high					
Neuroticism	1.68±1.58 vs 2.47±1.31	1.75±1.34 vs 2.63±1.64	8.125**	0.007	0.009
Extraversion	1.95±1.52 vs 2.31±1.42	2.52±1.70 vs 1.89±1.38	0.244	0.003	2.579
Openness to experience	1.70±1.54 vs 2.54±1.30	2.16±1.78 vs 2.17±1.31	1.808	0.002	1.874
Agreeableness	1.90±1.45 vs 2.38±1.51	2.17±1.87 vs 2.16±1.31	0.585	0.010	0.596
Conscientiousness	2.03±1.45 vs 2.20±1.55	2.37±1.33 vs 2.02±1.68	0.115	0.007	0.652
2nd CG site, low vs high					
Neuroticism	0.22±0.59 vs 0.14±0.49	0.22±0.52 vs 0.22±0.60	0.066	0.001	0.103
Extraversion	0.12±0.46 vs 0.26±0.63	0.24±0.62 vs 0.21±0.52	0.101	0.001	0.565
Openness to experience	0.14±0.49 vs 0.22±0.59	0.19±0.52 vs 0.25±0.59	0.252	0.001	0.015
Agreeableness	0.12±0.45 vs 0.26±0.64	0.24±0.58 vs 0.21±0.55	0.293	0.007	0.524
Conscientiousness	0.11±0.42 vs 0.28±0.67	0.26±0.64 vs 0.20±0.50	0.09	0.000	0.982
Mean of 1st and 2nd CG site, low vs high					
Neuroticism	0.95±0.95 vs 1.30±0.75	0.98±0.79 vs 1.42±0.93	5.509*	0.003	0.026
Extraversion	1.03±0.86 vs 1.28±0.87	1.37±0.94 vs 1.05±0.82	0.095	0.000	2.574
Openness to experience	0.92±0.88 vs 1.38±0.78	1.17±0.97 vs 1.20±0.80	1.747	0.000	1.522
Agreeableness	1.01±0.82 vs 1.32±0.91	1.19±1.04 vs 1.18±0.76	0.715	0.020	0.790
Conscientiousness	1.07±0.81 vs 1.24±0.95	1.30±0.84 vs 1.11±0.91	0.038	0.002	0.989

Notes: The figures on the table show mean±SD of methylation levels of the BDNF gene. *p<0.05, **p<0.01.

Abbreviations: BDNF, brain derived neurotrophic factor; NEO PI-R, NEO Personality Inventory-Revised.

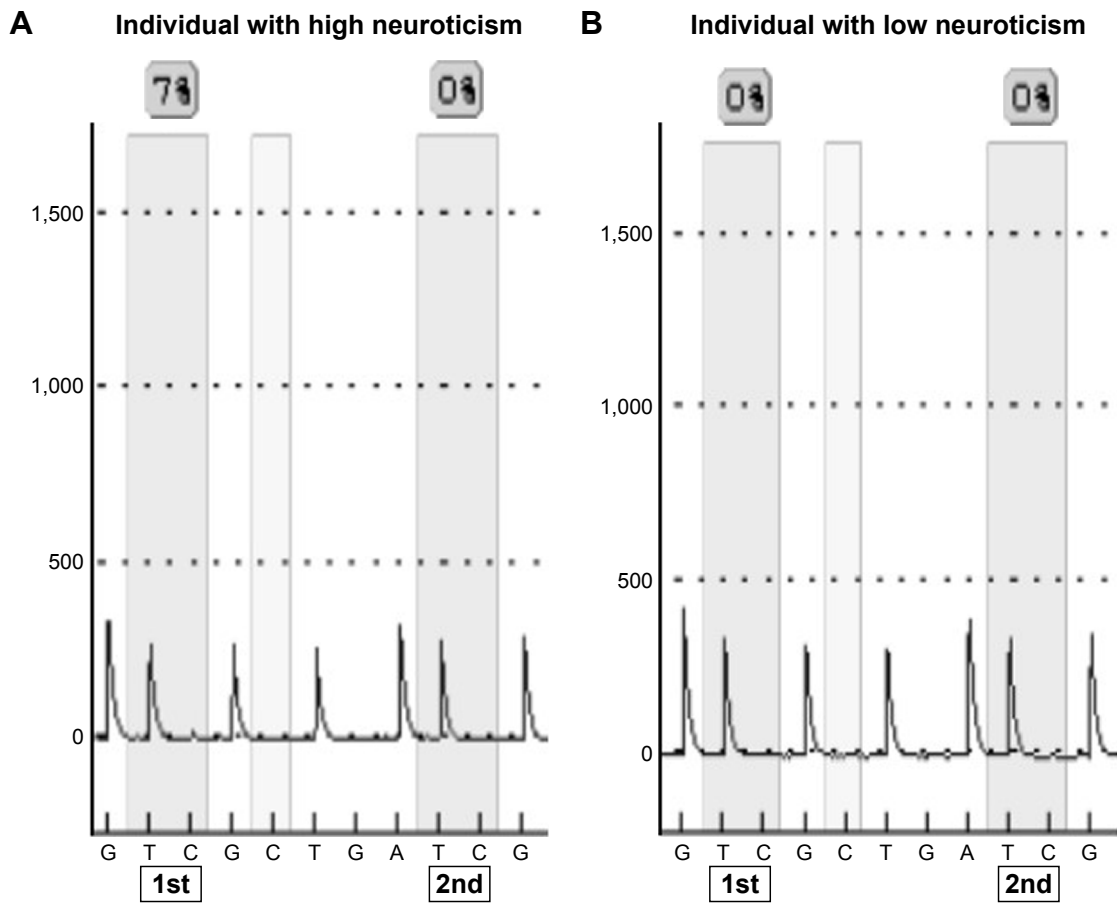


Figure 3 Pyrograms of representative individuals with high (A) and low (B) neuroticism scores.

Notes: The percentages of methylation in the highlighted regions are estimated by the ratio of C and T intensities. 1st and 2nd show the 1st and 2nd CG site within the examined region of the BDNF gene, respectively.

Abbreviation: BDNF, brain derived neurotrophic factor.

Thus, the possibility that the association between neuroticism and BDNF gene methylation observed was due to genome-wide effects rather than a BDNF-specific effect cannot be excluded. Second, our subjects had a homogeneous and rather specific background, ie, they were all young and well-educated Japanese. Therefore, it may be difficult to extrapolate the present results to general populations or other ethnic groups. Third, the number of subjects was relatively small, suggesting lack of a statistical power to detect small differences. Fourth, blood BDNF levels were not analyzed in the present study. Thus, replication studies in larger populations with other backgrounds and with data for blood BDNF levels are needed to confirm the present results.

Conclusion

The present study suggests that higher neuroticism is related to increased methylation of the BDNF gene.

Acknowledgments

This study was supported by funding from the Ministry of Education, Culture, Sports, Science and Technology of Japan. The funding had no effect on the present study.

Disclosure

The authors report no conflicts of interest in this work.

References

- Goldberg AD, Allis CD, Bernstein E. Epigenetics: a landscape takes shape. *Cell*. 2007;128(4):635–638.
- Mohn F, Weber M, Rebhan M, et al. Lineage-specific polycomb targets and de novo DNA methylation define restriction and potential of neuronal progenitors. *Mol Cell*. 2008;30(6):755–766.
- Egan MF, Kojima M, Callicott JH, et al. The BDNF val66met polymorphism affects activity-dependent secretion of BDNF and human memory and hippocampal function. *Cell*. 2003;112(2):257–269.
- Chen ZY, Jing D, Bath KG, et al. Genetic variant BDNF (Val66Met) polymorphism alters anxiety related behavior. *Science*. 2006;314(5796):140–143.
- Bueller JA, Aftab M, Sen S, Gomez-Hassan D, Burmeister M, Zubieta JK. BDNF Val66Met allele is associated with reduced hippocampal volume in healthy subjects. *Biol Psychiatry*. 2006;59(9):812–815.
- Molendijk ML, Bus BA, Spinhoven P, et al. Serum levels of brain-derived neurotrophic factor in major depressive disorder: state-trait issues, clinical features and pharmacological treatment. *Mol Psychiatry*. 2011;16(11):1088–1095.
- Martinowich K, Hattori D, Wu H, et al. DNA methylation-related chromatin remodeling in activity-dependent BDNF gene regulation. *Science*. 2003;302(5646):890–893.
- Chen D, Meng L, Pei F, Zheng Y, Leng J. A review of DNA methylation in depression. *J Clin Neurosci*. 2017;43:39–46.
- Costa PT Jr, McCrae RR. *Revised NEO Personality Inventory (NEO-PI-R) and NEO Five-Factor Inventory (NEO-FFI) Professional Manual*. North Florida: Psychological Assessment Resources; 1992.
- Klein DN, Kotov R, Bufferd SJ. Personality and depression: explanatory models and review of the evidence. *Annu Rev Clin Psychol*. 2011;7:269–295.
- Ormel J, Jeronimus BF, Kotov R, et al. Neuroticism and common mental disorders: meaning and utility of a complex relationship. *Clin Psychol Rev*. 2013;33(5):686–697.
- Kendler KS, Gatz M, Gardner CO, Pedersen NL. Personality and major depression: a Swedish longitudinal, population-based twin study. *Arch Gen Psychiatry*. 2006;63(10):1113–1120.
- Suzuki A, Matsumoto Y, Shibuya N, et al. The brain-derived neurotrophic factor Val66Met polymorphism modulates the effects of parental rearing on personality traits in healthy subjects. *Genes Brain Behav*. 2011;10(4):385–391.
- Terracciano A, Lobina M, Piras MG, et al. Neuroticism, depressive symptoms, and serum BDNF. *Psychosom Med*. 2011;73(8):638–642.
- American Psychiatric Association. *Diagnostic and Statistical Manual of Mental Disorders*. 4th ed. Washington, DC: American Psychiatric Association; 1994.
- Keleshian VL, Modi HR, Rapoport SI, Rao JS. Aging is associated with altered inflammatory, arachidonic acid cascade, and synaptic markers, influenced by epigenetic modifications, in the human frontal cortex. *J Neurochem*. 2013;125(1):63–73.
- McCrae RR, Terracciano A. Personality Profiles of Cultures Project. Universal features of personality traits from the observer's perspective: data from 50 cultures. *J Pers Soc Psychol*. 2005;88(3):547–561.
- Shimonaka Y, Nakazato K, Gondo Y, et al. *NEO-PI-R, NEO-FFI Manual for the Japanese Version*. Tokyo: Tokyo Shinri; 1999.
- Kundakovic M, Gudsnek K, Herbstman JB, Tang D, Perera FP, Champagne FA. DNA methylation of BDNF as a biomarker of early-life adversity. *Proc Natl Acad Sci U S A*. 2015;112(22):6807–6813.
- Suzuki A, Kamata M, Matsumoto Y, Shibuya N, Otani K. Increased body mass index associated with increased harm avoidance and decreased self-directedness in Japanese women. *J Nerv Ment Dis*. 2009;197(3):199–201.
- Cervone DC, Pervin LA. *Trait Theory: The Five-Factor Model; Applications and Evaluation of Trait Approaches to Personality*, in: *Personality: Theory and Research*. 12th ed. Hoboken: John Wiley & Sons; 2013.
- Takahashi N, Suzuki A, Matsumoto Y, Shirata T, Otani K. Perceived parental affectionless control is associated with high neuroticism. *Neuropsychiatr Dis Treat*. 2017;13:1111–1114.
- Roth TL, Lubin FD, Funk AJ, Sweatt JD. Lasting epigenetic influence of early-life adversity on the BDNF gene. *Biol Psychiatry*. 2009;65(9):760–769.
- Thaler L, Gauvin L, Joob R, et al. Methylation of BDNF in women with bulimic eating syndromes: associations with childhood abuse and borderline personality disorder. *Prog Neuropsychopharmacol Biol Psychiatry*. 2014;54:43–49.
- Unternaehrer E, Meyer AH, Burkhardt SC, et al. Childhood maternal care is associated with DNA methylation of the genes for brain-derived neurotrophic factor (BDNF) and oxytocin receptor (OXTR) in peripheral blood cells in adult men and women. *Stress*. 2015;18(4):451–461.
- Yamasue H, Abe O, Suga M, et al. Gender-common and -specific neuroanatomical basis of human anxiety-related traits. *Cereb Cortex*. 2008;18:46–52.
- Kendler KS, Gardner CO, Prescott CA. Personality and the experience of environmental adversity. *Psychol Med*. 2003;33(7):1193–1202.
- Jeronimus BF, Ormel J, Aleman A, Penninx BW, Riese H. Negative and positive life events are associated with small but lasting change in neuroticism. *Psychol Med*. 2013;43(11):2403–2415.
- Lehto K, Mäestu J, Kiive E, Veidebaum T, Harro J. BDNF Val66Met genotype and neuroticism predict life stress: a longitudinal study from childhood to adulthood. *Eur Neuropsychopharmacol*. 2016;26(3):562–569.

Neuropsychiatric Disease and Treatment

Dovepress

Publish your work in this journal

Neuropsychiatric Disease and Treatment is an international, peer-reviewed journal of clinical therapeutics and pharmacology focusing on concise rapid reporting of clinical or pre-clinical studies on a range of neuropsychiatric and neurological disorders. This journal is indexed on PubMed Central, the 'PsycINFO' database and CAS,

and is the official journal of The International Neuropsychiatric Association (INA). The manuscript management system is completely online and includes a very quick and fair peer-review system, which is all easy to use. Visit <http://www.dovepress.com/testimonials.php> to read real quotes from published authors.

Submit your manuscript here: <http://www.dovepress.com/neuropsychiatric-disease-and-treatment-journal>