



Development of the ICF-CY Set for Cardiac Rehabilitation After Pediatric Congenital Heart Surgery

Wen-Yi Luo^{1,2}, Ping Ni², Lin Chen², Qian-Qian Pan³, Hao Zhang² and Ya-Qing Zhang^{4*}

¹ Shanghai Jiao Tong University, School of Nursing, Shanghai, China, ² Shanghai Children's Medical Center, Shanghai Jiao Tong University, School of Medicine, Shanghai, China, ³ Faculty of Education, The University of Hong Kong, Hong Kong, Hong Kong SAR, China, ⁴ Editorial Department of Journal of Shanghai Jiao Tong University (Medical Science), Shanghai Jiao Tong University, Shanghai, China

Background: Most children with congenital heart disease (CHD) require surgical repair, and postoperative rehabilitation is an essential step to restore the quality of life. The present study constructs and confirms the International Classification of Functioning, Disability, and Health for Children and Youth core set for children with congenital heart disease 1 year after surgery (ICF-CY-CHDS).

Methods: From February 2021 to August 2021, 340 children aged 3–6 years after CHD surgery were evaluated using the ICF-CY-CHDS and analyzed using the Rasch model.

Results: The final ICF-CY-CHDS contained 22 categories; it exhibited a nonsignificant χ^2 test result for the item-trait interaction ($\chi^2 = 6736.37$, $p = 0.8660$, Bonferroni-adjusted $p = 0.0023$). The average severity of children was less than the average difficulty of categories (-2.26 logit < 0 logit). The weighted k of all the categories was 0.964 ($p < 0.001$), and the item separation index was 0.96. The area under the ROC curve of children with a diagnosis result of heart failure was 0.866 (95% CI: 0.801 ~ 0.931) with good sensitivity (0.875) and specificity (0.759).

Conclusion: The ICF-CY-CHDS presents a preliminary practical direction during early cardiac rehabilitation after pediatric CHD surgery, and thus provides a basis and scope for clinical evaluation and intervention program formulation.

Keywords: ICF-CY, congenital heart disease, pediatric, surgery, cardiac rehabilitation

INTRODUCTION

The prevalence of congenital heart disease (CHD) was reported to be one per 1,000 live births worldwide between 1990 and 2017 (1). Surgery is the primary treatment for CHD. In recent years, the mortality after congenital heart surgery in pediatric heart centers has decreased to 2–3% (2). Reasons for decreasing mortality are due to the following aspects: improvements in surgical skills, the protection of the myocardium by cardiopulmonary bypass technology, advanced postoperative monitoring, and the application of extracorporeal membrane oxygenation.

However, the surviving children with critical CHD still face many problems after surgery, especially the related adverse events caused by heart failure and a decline in their quality of life. Studies have reported that the probability of heart failure in the first year after

OPEN ACCESS

Edited by:

Oswin Grollmuss,
Université Paris-Sud, France

Reviewed by:

Jannos Siaplaouras,
Independent Researcher,
Fulda, Germany
Endale Tefera,
University of Botswana, Botswana

*Correspondence:

Ya-Qing Zhang
zhangyqf@163.com

Specialty section:

This article was submitted to
Pediatric Cardiology,
a section of the journal
Frontiers in Pediatrics

Received: 06 October 2021

Accepted: 04 January 2022

Published: 27 January 2022

Citation:

Luo W-Y, Ni P, Chen L, Pan Q-Q,
Zhang H and Zhang Y-Q (2022)
Development of the ICF-CY Set for
Cardiac Rehabilitation After Pediatric
Congenital Heart Surgery.
Front. Pediatr. 10:790431.
doi: 10.3389/fped.2022.790431

CHD surgery is high; nearly 27% of children die of heart failure 30 days after CHD surgery (3). In addition, the quality of life of these children in the first year after CHD surgery is worse (4) compared to other periods after surgery. Therefore, children need standardized outpatient follow-up, regular examinations, and physical activity guidance in the first year after CHD surgery to avoid disease-related adverse events and improve their quality of life (5). Intervening the higher risk of heart failure in the first year after CHD surgery is the key problem that needs to be solved.

The International Classification of Functioning, Disability and Health (ICF) is a global classification system developed by the World Health Organization (WHO) that focuses on health rather than diagnosis. ICF encodes the health status based on the framework of body function, body structure, activity and participation, and environmental components. The ICF version for Children and Youth (ICF-CY), published in 2007, follows the same standards (6). Currently, the ICF-CY is used to evaluate the health status of children to improve their quality of life; it is also applied for conceptual models of clinical intervention and adaptive training services (7). Previous study (8) has found readily identifiable risk factors for readmission in children after CHD surgery, including socio-demographic and clinical characteristics. Although these characteristics may not be modifiable, they are identifiable and as a result may require a comprehensive evaluation and interventions by health caregivers. The construction of the ICF-CY core sets for CHD surgery will help to extract the core issues that require high concern from clinicians. This will help physicians to identify high-risk children through core categories, to provide targeted cardiac rehabilitation.

In the present study, we constructed and investigated the ICF-CY core set in children after CHD surgery (ICF-CY-CHDS). Our study results provide a foundation to establish a cardiac rehabilitation evaluation system in the future.

METHODS

Design

This study was a mixed study with two stages. First, the evaluation tool of cardiac rehabilitation after CHD surgery was constructed based on qualitative research, a literature review, and expert consultation. Second, the reliability and validity of the tool was clarified using quantitative research. This study was approved by the ethics committee (SCMCIRB-K2021002). This investigation conformed to the principles outlined in the Declaration of Helsinki.

Participants

To avoid the influence of children's growth, this study evaluated preschool children (3–6 years old) within 1 year after CHD surgery with their parents' consent. For the Rasch analysis of polytomous items, Linacre (9) suggested that sample sizes of 10 per category may be sufficient. The sample size of this study was 270 (10 times 27 categories).

Measures

Demographic Data

Demographic data included gender, age, the score of RACHS-1 (risk adjustment in congenital heart surgery-1) (10), follow-up time, diagnosis of heart failure, medicine taken, and parental education.

Heart Failure

The criteria for heart failure with a reduced ejection fraction (HF_rEF) was a reduced LVEF ($\leq 40\%$). The criteria for heart failure with a mildly reduced ejection fraction (HF_mrEF) was patients with a LVEF between 41 and 49% that had mildly reduced LV systolic function. The criteria for heart failure with preserved ejection fraction (HF_prEF) was (1) LVEF $> 50\%$; and (2) objective evidence of cardiac structural and/or functional abnormalities consistent with the presence of LV diastolic dysfunction/raised LV filling pressures including raised natriuretic peptides (11).

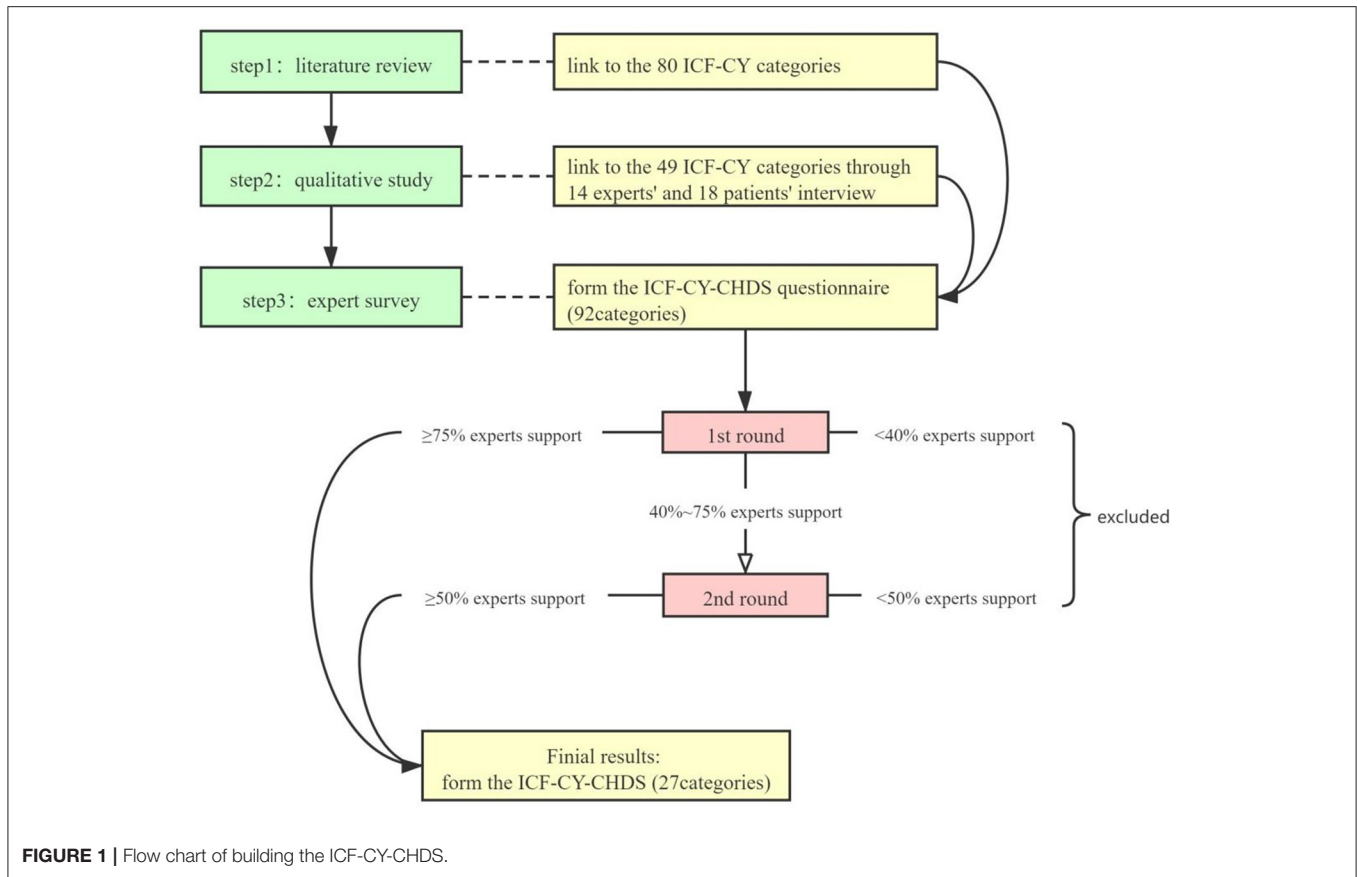
ICF-CY-CHDS

The ICF-CY-CHDS was constructed based on the standardized three-step methodology to develop an ICF core set (see **Figure 1**) (12).

Step 1: Based on the MEDLINE, EMBASE, Wanfang, and CNKI databases, English and Chinese published articles with the keywords "congenital heart disease" and "cardiac rehabilitation" were searched for relevant studies from their respective inception dates to November 30, 2020. The article selection criteria were: (1) literature related to pediatric patients after CHD surgery; (2) children aged between 0 and 18 years old; (3) articles published prior to November 30, 2020; and (4) case studies, qualitative studies, animal experiments, letters, and reviews were excluded. Then, the original set of the ICF-CY category was formed based on the outcomes of the selected literature. Step 1 resulted in a total of 80 ICF-CY categories.

Step 2: Qualitative research was conducted involving semi-structured expert interviews with 14 medical staff engaged in diagnosis, treatment, follow-up, rehabilitation, and nursing related to CHD and 18 parents of children after CHD surgery in the first year. The relevant concepts in the interview content were immediately transferred to the corresponding ICF-CY category until no new concepts appeared, that is, when the interview reached saturation. After merging the literature review and qualitative research, duplicated categories were eliminated to form the ICF-CY-CHDS questionnaire. Step 2 resulted in 49 ICF-CY categories.

Step 3: Experts were invited to assess whether each category was related to the cardiac rehabilitation of children after CHD surgery. Thirty-six experts were identified from the National Pediatric Medical Center Heart Alliance and the Congenital Heart Disease Group of the Nursing Alliance. The conditions for selecting the experts were the following: (1) engaged in postoperative medical treatment, nursing, and rehabilitation regarding CHD; and (2) had > 5 years of working experience. After two rounds of expert evaluations, the ICF-CY-CHDS with 27 categories was constructed.



To reduce the differences between raters in scoring the categories, four measuring guidelines were used in this study. These guidelines followed the international common ICF scoring standards from 0 to 4 (Table 1).

Data Collection

From February to August 2021, data were collected in the heart center in Shanghai Children's Medical Center, China. The demographic data were collected using face-to-face interviews. Before the patients officially entered the cardiac rehabilitation process, the two nurses rated every patient using the ICF-CY-CHDS independently. All the data were recorded in electronic medical and nursing records. The researchers exported these medical data for analysis until all the data was collected. If the missing data exceeded 10%, the case was excluded.

Data Analysis

Version 26.0 of the SPSS software suite was used to compile the descriptive statistics summarizing the patients' demographic data and conducting the critical ration (CR). CR refers to the use of the difference of the average of extreme groups to analyze the discrimination. The total scores of each subject were ranked to find the scores of the first 27% of subjects (high group) and the last 27% of subjects (low group). The mean difference was compared between the two groups in various categories and tested for significance using an independent sample *t*-test.

Rasch analysis was applied using Version 3.72.3 WINSEPS. Chi-square item-trait interaction statistics were applied to evaluate the overall fit of the model for the categories of each component. A Bonferroni-corrected significance level was used to adjust for multiple comparison ($p = 0.05/k$, $k =$ number of categories) (13, 14). The item person interaction statistics for items and persons were used to assess item fit and person fit to the model (ranging from 0.5 to 1.5). The fit of each category was indicated by the standardized residuals (*z* values). *Z* values exceeding ± 2.5 were considered to indicate a misfit to the Rasch model. Reliability was studied using the person and item separation index that ranged between 0 and 1. A value of one indicated perfect reproducibility of the person and item locations on a latent continuum. A *K* value of 0.81–1.00 was viewed as a near perfect agreement to evaluate the inter-rater reliability (15). Sensitivity, specificity, and area under receiver operating characteristic curve (ROC) were used to judge the predicted effect of the ICF-CY-CHDS.

RESULTS

Patient Characteristics

Convenience sampling eventually yielded 340 eligible children after CHD surgery in the first year from February to August 2021. Due to the mandatory items set in the electronic record sheet, there was no missing data in the exported data. These patients had a mean age of 4.48 ± 1.05 years. Their follow-up time was

TABLE 1 | Measuring guidelines for the ICF-CY-CHDS.

ICF qualifiers	Guideline 1 (%) ^a	Guideline 2 ^b	Guideline 3 ^c	Guideline 4 ^d
0	0–4	No, none, absent, negligible	No such problem over the last 1 month	0 No problem
1	5–24	Mild slide, low	Rare (<25% of the last 1 month)	1 Mild problem
2	25–49	Moderate, medium, fair	Occasional (<50% of the last 1 month)	2 Moderate problems
3	50–95	Severe, high, extreme	Frequent (more than 50% of the last 1 month)	3 Severe problems
4	96–100	Complete, total	Almost every day (more than 95% of the last 1 month)	4 Complete problems
	e.g., b530, b560	e.g., b1302, b134, b420, b430, b435, b440, b445, b510, b515, b545, d820, d880, e1101, e410, e450, e580	e.g., b122, b147, b152, d160	e.g., b280 - Wong-Baker pain scale, b410 - The New York Heart Association classification, b455 - OMNI scale, s410 - risk adjustment in congenital heart surgery-1 method, Pf1 - Family socioeconomic status

^aTo transform the patient information into the percentages of the ICF calibrated scale.

^bTo transform the wording from patient reports in the ICF qualifiers.

^cTo transform the frequency with which a problem was observed during the previous month into the ICF qualifiers.

^dTo transform the scores of the selected instruments or standards into the ICF qualifiers.

TABLE 2 | Characteristics of the study population ($n = 340$).

Items		Number	Frequency (%)
Gender	Male	166	48.8
	Female	174	51.2
RACHS-1	1	8	2.4
	2	230	67.6
	3	85	25.0
	4	15	4.4
	5	2	0.6
Medicine taken	Need	54	15.9
	None	284	83.5
Heart failure in the follow-up	HFrEF	1	0.3
	HFmEF	2	0.6
	HFpEF	21	6.2
	None	316	92.9
Parental education level	Primary school	10	2.9
	Junior middle school	91	26.8
	Senior middle school	64	18.8
	College and undergraduate	158	46.5
	postgraduate	17	5.0

RACHS-1, risk adjustment in congenital heart surgery-1 method.

HFrEF, HF with reduced ejection fraction.

HFmEF, HF with mid-range ejection fraction.

HFpEF, Heart failure with preserved ejection fraction.

8.33 ± 2.79 months after CHD surgery. The other characteristics are shown in (Table 2).

Critical Ration

A percentage of 27% of the total score was used for both the high group (≥ 13) and low group (≤ 6). There was no statistical

TABLE 3 | Fit of different score combinations.

Combination strategy	New score	Number (%)	Infit	Outfit
Combination of 1 and 2 scores	0	6,160 (79)	0.86	0.94
	1	1,225 (16)	1.02	0.62
	2	302 (4)	1.06	1.35
Combination of 3 and 4 scores	3	133 (2)	1.52	3.31
	0	6,160 (79)	0.92	0.92
	1	582 (7)	0.95	0.58
Combination of 1, 2 and 3 scores	2	643 (8)	0.83	0.79
	3	435 (6)	1.35	1.58
	0	6,160 (79)	0.86	0.95
Combination of 1 and 2 scores and combination of 3 and 4 scores	1	1,527 (20)	1.03	0.70
	2	133 (2)	1.56	3.83
Combination of 1 and 2 scores and combination of 3 and 4 scores	0	6,160 (79)	0.92	0.94
	1	1,232 (16)	0.90	0.70
	2	428 (5)	1.28	1.47

difference in e1101, b420, b445, and b280 according to an independent sample *t*-test ($P > 0.05$). These four categories were removed from the ICF-CY-CHDS.

Rasch Analysis

The remaining 23 categories were entered into WINSTEPS software for the Rasch analysis, and it was found that the threshold estimate of the categories was reversed. The scoring method of all the categories needed to be adjusted using the combined strategy of different scores. Therefore, 1 and 2 were combined to be 1, and 3 and 4 were combined to be 2. Then the values of the infit and output were satisfactory (see Table 3). After the combination, the scores of various objectives increased monotonically (Figure 2).

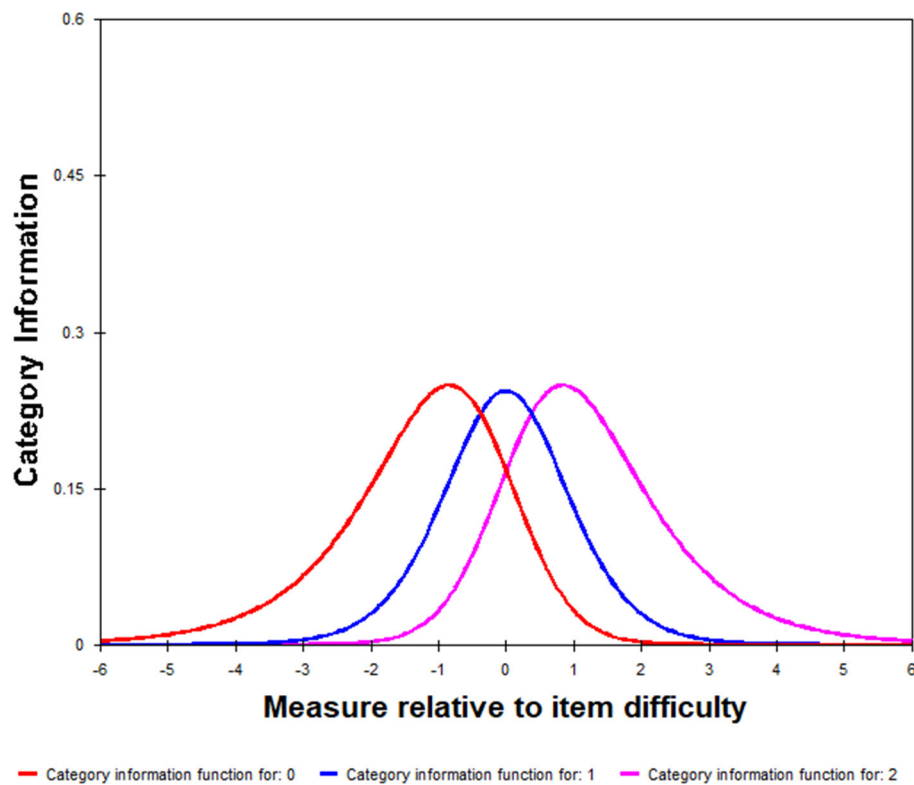


FIGURE 2 | Qualifier information for the ICF-CY-CHDS.

In the first-round Rasch analysis, the 23 categories exhibited a non-significant χ^2 test result for the item-trait interaction ($\chi^2 = 7438.70$, $p = 0.5574$, Bonferroni-adjusted $p = 0.05/23 = 0.0022$). If the value of the item fit residuals of s410 was poor, then this category was deleted. In the second-round Rasch analysis, it was found that the infit of b530 was 2.6. After a group discussion, we decided to retain b530 because of the importance of the weight management for pediatric CHD. Finally, a total of 22 categories exhibited a non-significant χ^2 test result for the item-trait interaction ($\chi^2 = 6736.37$, $p = 0.8660$, Bonferroni-adjusted $p = 0.05/22 = 0.0023$) (Tables 4, 5).

The severity of children and difficulty of the categories was transformed into a logit scale to be compared directly. Figure 3 shows that the average severity of children was less than the average difficulty of categories (-2.26 logit < 0 logit).

Inter-rater Reliability of the ICF-CY-CHDS

The two nurses used the ICF-CY-CHDS to measure the 340 participants independently. The weighted k over all the categories was 0.964 ($p < 0.001$), and the weighted k of the remaining 22 categories ranged from 0.855 to 1.000 ($p < 0.001$).

Relationship Between the Diagnosis of Heart Failure and the ICF-CY-CHDS

Table 6 shows that the ICF-CY-CHDS score of children with heart failure was significantly higher than that of children without

heart failure ($t = 8.017$, $p = 0.000$). In addition, the total score was negatively correlated with the LVEF ($r = -0.119$, $p = 0.029$). The ROC curve with the diagnosis result of heart failure in children as the state variable diagnosed as heart failure as was shown in (Figure 4). The area under the curve was 0.866 (95% CI: 0.801–0.931), and the boundary value was seven points. The ICF-CY-CHDS had good sensitivity (0.875) and specificity (0.759) for the evaluation of heart failure in such children.

DISCUSSION

In this study, it was found that 24 children (7.1%) had heart failure within 1 year after CHD surgery. The establishment of standardized cardiac rehabilitation evaluation tools in the first year after CHD surgery was conducive to the early identification and intervention of the management of high-risk children. Due to the improvement of the CHD surgery scheme, it is undeniable that most children will survive, but these children may still have cardiac insufficiency, heart failure, repeated hospitalization, and even death after CHD surgery (16). Disease-related functional problems, parental care, and the social environment may affect children's recovery after surgery (17), and the existing quality of life tools cannot fully reflect the problems of these high-risk children due to dimensional constraints. The ICF-CY-CHDS constructed in this study comprehensively identified the core issues that require clinical attention for children

TABLE 4 | Categories retained after multiple rounds of Rasch analysis.

Item	Measure	Model S.E.	Infit		Outfit		
			MNSQ	ZSTD	MNSQ	ZSTD	
e410	Individual attitudes of immediate family members	1.96	0.38	0.93	0.0	0.75	-0.4
b510	Ingestion functions	1.61	0.31	1.46	1.3	0.60	-0.9
b440	Respiration functions	1.28	0.26	0.88	-0.3	0.81	-0.4
b147	Psychomotor functions	1.28	0.26	1.01	0.1	0.54	-1.4
b545	Water, mineral and electrolyte balance functions	1.15	0.25	1.39	1.4	1.03	0.2
b430	Hematological system functions	0.53	0.18	1.40	1.8	0.85	-0.5
b122	Global psychosocial functions	0.53	0.18	0.80	-1.0	0.70	-1.2
b134	Sleep functions	0.50	0.18	1.13	0.7	1.23	0.9
d820	School education	0.20	0.15	1.21	1.2	0.93	-0.3
d880	Engagement in play	0.12	0.15	1.00	0.1	0.71	-1.5
b515	Digestive functions	0.01	0.14	1.08	0.5	1.15	0.8
b410	Heart functions	-0.04	0.14	0.84	-1.1	0.64	-2.1
pf1	Family socioeconomic status	-0.17	0.13	0.92	-0.6	1.16	0.9
b152	Emotional functions	-0.57	0.11	0.81	-1.8	0.92	-0.5
b455	Exercise tolerance functions	-0.60	0.11	0.77	-2.3	0.79	-1.5
b1302	Appetite	-0.61	0.11	1.18	1.6	1.36	2.3
d160	Focusing attention	-0.71	0.10	0.88	-1.2	1.16	1.1
e450	Individual attitudes of health professionals	-0.84	0.10	1.13	1.4	0.97	-0.2
b560	Growth maintenance functions	-1.24	0.09	1.17	2.2	1.04	0.5
b435	Immunological system functions	-1.27	0.09	0.83	-2.5	0.97	-0.2
b530	Weight maintenance functions	-1.48	0.08	1.18	2.6	1.03	0.4
e580	Health services, systems and policies	-1.63	0.08	1.11	1.7	1.11	1.4

TABLE 5 | Summary of results of the Rasch analysis.

	Measure	Person (n = 340)				PSI	Measure	Item				ISI	χ^2	P
		Infit		Outfit				Infit		Outfit				
		MNSQ	ZSTD	MNSQ	ZSTD			MNSQ	ZSTD	MNSQ	ZSTD			
23 categories	-2.36	0.97	0.1	0.92	0.1	0.48	0.00	1.09	0.4	0.92	-0.4	0.97	7,438.70	0.557
Final 22 categories (delete s410)	-2.26	1.00	0.2	0.93	0.1	0.38	0.00	1.05	0.3	0.93	-0.1	0.96	6,736.37	0.866

after CHD surgery from the biological-psychological-social model, including body function, body structure, activity and participation, environmental factors, and personal factors, all of which can comprehensively reflect the overall recovery of children during early cardiac rehabilitation.

In this study, item response theory (IRT) was used to evaluate the reliability and validity of ICF-CY-CHDS. The main reason for selecting IRT was that in addition to focusing on the total score, we paid more attention to the degree of each core category on high-risk children. The Rasch model is one of the most utilized applications of item response theory (18). Unlike classic test theory, the Rasch model assesses the internal construct validity, the optimal scoring scheme, one-dimensionality, item fit, item local independency, and item bias by subgroups of respondents. This study confirmed that the ICF-CY-CHDS fit well and was convenient for clinical medical staff to evaluate, so as to fully understand the overall rehabilitation of children. **Table 5** shows

that the average severity of children was less than the average difficulty of a category (-2.26 logit < 0 logit), indicating that the overall level of children after CHD surgery in the first year was better than expected. **Figure 3** shows that the distribution of children after CHD surgery ranged from -4 to -1 , indicating that these children recovered better than we expected.

In terms of category distribution, the categories of b152, b455, b1302, d160, e450, b560, b435, b530, and e580 were below -0.5 logit. These frequent categories exposed the common problems experience by children after CHD surgery, including emotion, exercise tolerance, nutrition, susceptibility to infection, and health service system problems. E580 was located at the bottom of the category distribution, indicating this problem was common among children after CHD surgery. A recent study revealed that due to a lack of training and effective intervention methods, health care professionals were unable to provide adequate support and help for these children and their

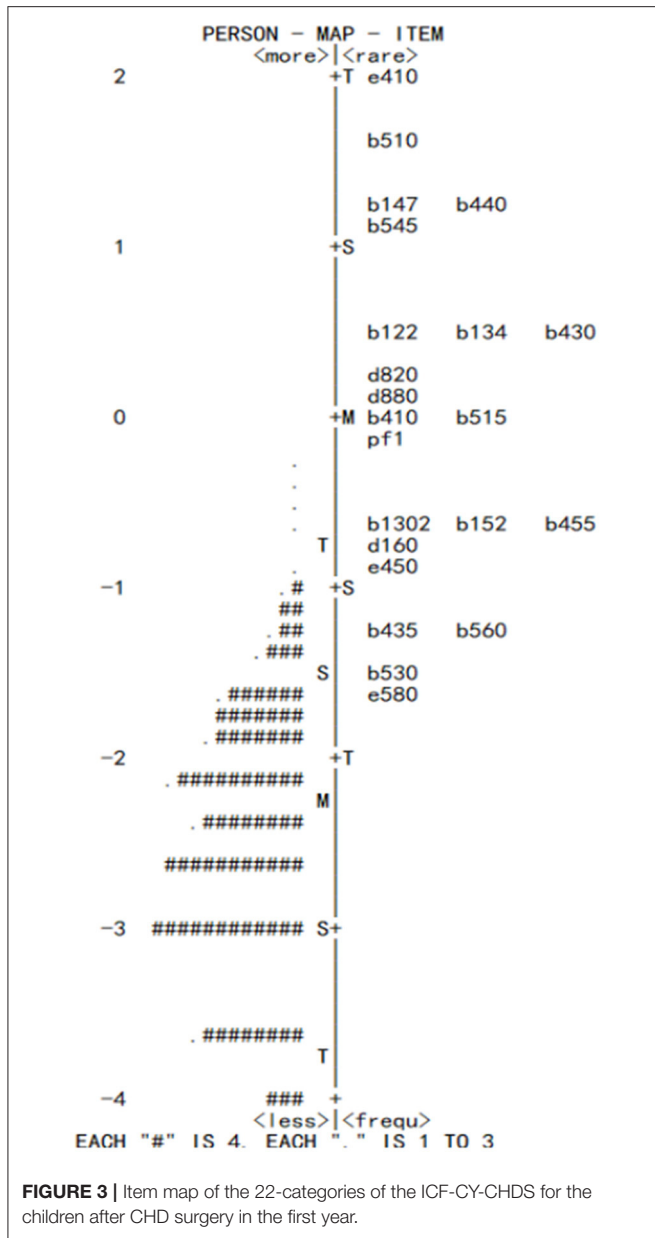


FIGURE 3 | Item map of the 22-categories of the ICF-CY-CHDS for the children after CHD surgery in the first year.

families (19). In addition, according to Chinese national data, the mortality of CHD has decreased significantly in recent years (20); however, the mortality in rural children remains higher than that of urban children. Thus, the availability of health services in rural areas, including pediatric drugs, cardiac ultrasound level, and child health services, requires further attention and resolution.

In addition, the categories larger than 1 logit involved e410, b510, b440, b147, and b545. Although these categories were rare among the children after CHD surgery, they can easily trigger serious complications in children. In this study, 7.1% of children belonged to HFpEF, and they usually had difficulty breathing (b440) and less food intake (b510), and long term dependence on medicine was needed to treat heart failure (21). Long-term chronic growth retardation in postoperative children has been

TABLE 6 | Relationship between heart failure and the ICF-CY-CHDS.

	Heart failure group (n = 316)	Non-heart failure group (n = 24)	t ^a	p	r ^b	p
LVEF	69.46 ± 7.30	65.55 ± 7.94	2.516	0.012	-0.119	0.029
ICF-CY-CHDS	4.52 ± 2.93	9.63 ± 3.93	8.017	0.000		

^aIndependent sample t - test.

^bPearson correlation analysis.

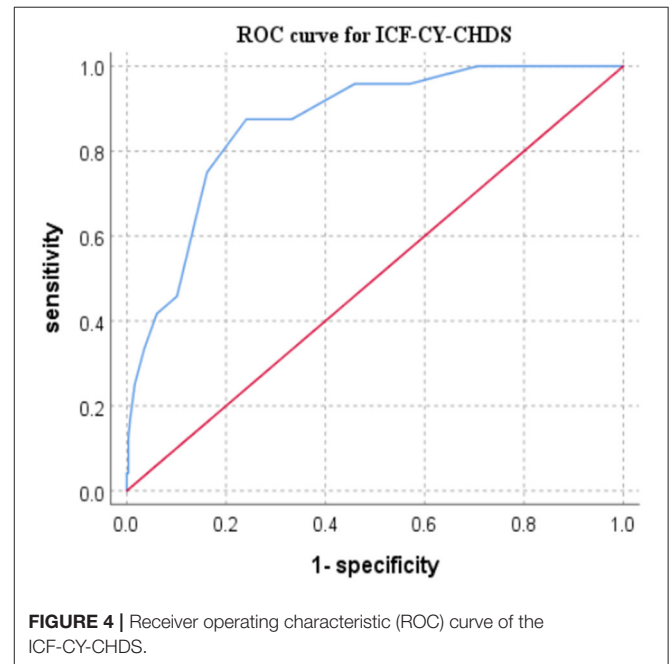


FIGURE 4 | Receiver operating characteristic (ROC) curve of the ICF-CY-CHDS.

confirmed to be associated with a residual shunt (OR = 35.3, $p < 0.0001$), a higher heart failure score (OR = 27.1, $p < 0.0001$), and long-term oral diuretics (OR = 20.5, $p = 0.001$) (22). Moreover, studies have revealed that complex CHD children suffer from a high chance of abnormal neurocognitive development after surgery (23), and this leads to executive function problems, social interaction obstacles, and academic difficulties (24, 25), due to the cerebral ischemia and hypoxia in different cortical areas in those children (26). In addition, the more children had postoperative disorders, the more they relied on their parents' care. Their parents always had serious psychological problems (anxiety and depression) (27) and low coping abilities (28), and this leads to the "own experience" management strategy when taking care of critical children. These family management styles can result in misjudgment and delay in disease management. Therefore, paying attention to the trend of the most difficult categories (e.g., e410, b510, b440, b147, and b545) will help to determine high-risk children.

Furthermore, this ICF-CY-CHDS not only demonstrated the level of disorder in children *via* each category, but also reflected the level of heart failure in children according to the total score. Children with an ICF-CY-CHDS over seven points were more

likely to have heart failure. Therefore, the ICF-CY-CHDS can be used in the early stage of cardiac rehabilitation, and this may be helpful for clinicians to identify children with heart failure and provide personalized intervention for high-risk categories in these children.

There is one limitation of this study. The removal of some ICF-CY categories as a result of model misfit does not necessarily mean that these categories were irrelevant. They should be considered in real world settings and recorded by caregivers in the future.

CONCLUSION AND IMPLICATIONS

There is considerable variation in postoperative cardiac rehabilitation among different heart centers and different age groups in children with CHD. In addition, CHD postoperative rehabilitation generally pays too much attention to cardiopulmonary function and ignores other potential obstacles in growth and development. In the present study, for the first time, we proposed the ICF-CY-CHDS as a preliminary practice guideline and blueprint for postoperative cardiac rehabilitation in CHD children. Future studies are warranted to develop intervention schemes for different populations based on the ICF-CY-CHDS.

DATA AVAILABILITY STATEMENT

The original contributions presented in the study are included in the article/supplementary material, further inquiries can be directed to the corresponding author.

REFERENCES

1. GBD 2017 Congenital Heart Disease Collaborators. Global, regional, and national burden of congenital heart disease, 1990–2017: a systematic analysis for the global burden of disease study 2017. *Lancet*. (2020) 4:185–200. doi: 10.1016/S2352-4642(19)30402-X
2. Zhang M, Luo W, Wang L, Chen X, Bao N, Xu Z. Causes of death after congenital heart surgery in children. *Congenit Heart Dis*. (2020) 15:377–86. doi: 10.32604/CHD.2020.011983
3. Stout KK, Broberg CS, Book WM, Cecchin F, Chen JM, Dimopoulos K, et al. Chronic heart failure in congenital heart disease: a scientific statement from the American Heart Association. *Circulation*. (2016) 133:770–801. doi: 10.1161/CIR.0000000000000352
4. Zhen L, Fu L. Study on influencing factors of quality of life of 2 4 years old children with congenital heart disease. *Chin J Modern Nurs*. (2010) 16:1365–8. doi: 10.3760/cma.j.issn.1674-2907.2010.12.001
5. Saavedra MJ, Eymann A, Pérez L, Busaniche J, Nápoli N, Marantz P, et al. Health related quality of life in children with congenital heart disease that undergo cardiac surgery during their first year of life. *Arch Argent Pediatr*. (2020) 118:166–72. doi: 10.5546/aap.2020.eng.166
6. World Health Organization. *International Classification of Functioning, Disability and Health: Children and Youth Version: ICF-CY*. Geneva, Switzerland; World Health Organization (2007).
7. Hsieh YL, Yang CC, Sun SH, Chan SY, Wang TH, Luo HJ. Effects of hippotherapy on body functions, activities and participation in children with cerebral palsy based on ICF-CY assessments. *Disabil Rehabil*. (2017) 39:1703–13. doi: 10.1080/09638288.2016.1207108

ETHICS STATEMENT

The studies involving human participants were reviewed and Ethical approval by Shanghai Children's Medical Center, Shanghai Jiao Tong University School of Medicine (SCMCIRB-K2021002). Written informed consent to participate in this study was provided by the participants' legal guardian/next of kin.

AUTHOR CONTRIBUTIONS

W-YL and Y-QZ: conceptualized, designed the study, and drafted the initial manuscript. HZ: designed the data collection instruments and coordinated and supervised data collection. PN and LC: conducted the data collection and reviewed and revised the manuscript. Q-QP: conducted the Rasch analysis. All authors approved the final manuscript as submitted and agree to be accountable for all aspects of the work.

FUNDING

This work was supported by the scientific research project from the Shanghai Municipal Health Commission (20194Y0479) and Shanghai Jiao Tong University School of Medicine: Nursing Development Program that belongs to W-YL.

ACKNOWLEDGMENTS

We are grateful to the Families and Children who took part in the study.

8. Benavidez O, He W, Lahoud-Rahme M. Readmissions following congenital heart surgery in infants and children. *Pediatr Cardiol*. (2019) 40:994–1000. doi: 10.1007/s00246-019-02104-4
9. Linacre J. Optimizing rating scale category effectiveness. *J Appl Meas*. (2002) 3:85–106.
10. Awori MN, Ogendo SW. Rachs-1 system in risk stratification for congenital heart disease surgery outcome. *East Afr Med J*. (2008) 85:36–8. doi: 10.4314/eamj.v85i1.9604
11. McDonagh TA, Metra M, Adamo M, Gardner RS, Baumbach A, Böhm M, et al. 2021 ESC Guidelines for the diagnosis and treatment of acute and chronic heart failure. *Eur Heart J*. (2021) 42:3599–726. doi: 10.1093/eurheartj/ehab368
12. Selb M, Escorpizo R, Kostanjsek N, Stucki G, Üstün B, Cieza A. A guide on how to develop an international classification of functioning, disability and health core set. *Eur J Phys Rehabil Med*. (2015) 51:105–17.
13. Tennant A, Conaghan PG. The Rasch measurement model in rheumatology: what is it and why use it? When should it be applied, and what should one look for in a Rasch paper? *Arthritis Rheum*. (2007) 57:1358–62. doi: 10.1002/art.23108
14. Bland JM, Altman DG. Multiple significance tests: the Bonferroni method. *BMJ*. (1995) 310:170. doi: 10.1136/bmj.310.6973.170
15. Landis JR, Koch GG. The measurement of observer agreement for categorical data. *Biometrics*. (1977) 33:159–74. doi: 10.2307/2529310
16. Xiang L, Su Z, Liu Y, et al. Effect of family socioeconomic status on the prognosis of complex congenital heart disease in children: an observational cohort study from China. *Lancet Child Adolesc Health*. (2018) 2:430–9. doi: 10.1016/S2352-4642(18)30100-7

17. Lisanti A. Parental stress and resilience in CHD: a new frontier for health disparities research. *Cardiol Young*. (2018) 28:1142–50. doi: 10.1017/S1047951118000963
18. Rasch G. *Probabilistic Models for Some Intelligence and Attainment Tests*. (Expanded edition). Chicago: University of Chicago Press (1980).
19. Biber S, Andonian C, Beckmann J, Ewert P, Freilinger S, Nagdyman N, et al. Current research status on the psychological situation of parents of children with congenital heart disease. *Cardiovasc Diagn Ther*. (2019) 9:S369–76. doi: 10.21037/cdt.2019.07.07
20. The Writing Committee of the Report on Cardiovascular Health and Diseases in China. Report on cardiovascular health and diseases in china 2019: An updated summary. *Chin Circul J*. (2020) 35:833–54. doi: 10.3969/j.issn.1000-3614.2020.09.001
21. Hinton RB, Ware SM. Heart failure in pediatric patients with congenital heart disease. *Circ Res*. (2017) 120:978–94. doi: 10.1161/CIRCRESAHA.116.308996
22. Zhang M, Wang L, Huang R, Sun C, Bao N, Xu ZM. Risk factors of malnutrition in Chinese children with congenital heart defect. *BMC Pediatr*. (2020) 20:213–20. doi: 10.1186/s12887-020-02124-7
23. Marino BS, Lipkin PH, Newburger JW, Peacock G, Gerdes M, Gaynor JW, et al. Neurodevelopmental outcomes in children with congenital heart disease: evaluation and management: a scientific statement from the American Heart Association. *Circulation*. (2012) 126:1143–72. doi: 10.1161/CIR.0b013e318265ee8a
24. Karsdorp PA, Everaerd W, Kindt M, Mulder BJ. Psychological and cognitive functioning in children and adolescents with congenital heart disease: a meta-analysis. *J Pediatr Psychol*. (2007) 32:527–41. doi: 10.1093/jpepsy/jsl047
25. Wernovsky G. Current insights regarding neurological and developmental abnormalities in children and young adults with complex congenital cardiac disease. *Cardiol Young*. (2006) 16:92–104. doi: 10.1017/S1047951105002398
26. Latal B, Patel P, Liamlahi R, Knirsch W, O’Gorman Tuura R, von Rhein M. Hippocampal volume reduction is associated with intellectual functions in adolescents with congenital heart disease. *Pediatr Res*. (2016) 80:531–7. doi: 10.1038/pr.2016.122
27. Lawoko S, Soares JJ. Psychosocial morbidity among parents of children with congenital heart disease: a prospective longitudinal study. *Heart Lung*. (2006) 35:301–14. doi: 10.1016/j.hrtlng.2006.01.004
28. Hövels-Gürich HH, Bauer SB, Schnitker R, Willmes-von Hinckeldey K, Messmer BJ, Seghaye MC, et al. Long-term outcome of speech and language in children after corrective surgery for cyanotic or acyanotic cardiac defects in infancy. *Eur J Paediatr Neurol*. (2008) 12:378–86. doi: 10.1016/j.ejpn.2007.10.004

Conflict of Interest: The authors declare that the research was conducted in the absence of any commercial or financial relationships that could be construed as a potential conflict of interest.

Publisher’s Note: All claims expressed in this article are solely those of the authors and do not necessarily represent those of their affiliated organizations, or those of the publisher, the editors and the reviewers. Any product that may be evaluated in this article, or claim that may be made by its manufacturer, is not guaranteed or endorsed by the publisher.

Copyright © 2022 Luo, Ni, Chen, Pan, Zhang and Zhang. This is an open-access article distributed under the terms of the Creative Commons Attribution License (CC BY). The use, distribution or reproduction in other forums is permitted, provided the original author(s) and the copyright owner(s) are credited and that the original publication in this journal is cited, in accordance with accepted academic practice. No use, distribution or reproduction is permitted which does not comply with these terms.