

Original Article
Immunology, Allergic
Disorders & Rheumatology



Comparison between Newly Developed and Commercial Inhalant Skin Prick Test Reagents Using In Vivo and In Vitro Methods

Sang Chul Lee ,^{1,2} Da Woon Sim ,³ Jongsun Lee ,² Kyoung Yong Jeong ,² Kyung Hee Park ,^{1,2} Jae-Hyun Lee ,^{1,2} Jung Dong Kim ,⁴ and Jung-Won Park ,^{1,2,4}

¹Division of Allergy and Immunology, Department of Internal Medicine, Yonsei University College of Medicine, Seoul, Korea

²Institute of Allergy, Yonsei University College of Medicine, Seoul, Korea

³Division of Allergy, Department of Internal Medicine, Chonnam National University Medical School, Gwangju, Korea

⁴Prolagen, Seoul, Korea



Received: Sep 26, 2017

Accepted: Jan 19, 2018

Address for Correspondence:

Jung-Won Park, MD, PhD

Division of Allergy and Immunology,
Department of Internal Medicine, Yonsei
University College of Medicine, 50-1 Yonsei-ro,
Seodaemun-gu, Seoul 03722, Korea.
E-mail: PARKJW@yuhs.ac

© 2018 The Korean Academy of Medical
Sciences.

This is an Open Access article distributed
under the terms of the Creative Commons
Attribution Non-Commercial License (<https://creativecommons.org/licenses/by-nc/4.0/>)
which permits unrestricted non-commercial
use, distribution, and reproduction in any
medium, provided the original work is properly
cited.

ORCID iDs

Sang Chul Lee
<https://orcid.org/0000-0001-5318-6804>
Da Woon Sim
<https://orcid.org/0000-0002-9723-0720>
Jongsun Lee
<https://orcid.org/0000-0003-1526-2241>
Kyoung Yong Jeong
<https://orcid.org/0000-0001-9887-1426>
Kyung Hee Park
<https://orcid.org/0000-0003-3605-5364>
Jae-Hyun Lee
<https://orcid.org/0000-0002-0760-0071>
Jung Dong Kim
<https://orcid.org/0000-0002-6348-9267>

<https://jkms.org>

ABSTRACT

Background: We developed skin prick test (SPT) reagents for common inhalant allergens that reflected the real exposure in Korea. The study aim was to evaluate diagnostic usefulness and allergen potency of our inhalant SPT reagents in comparison with commercial products.

Methods: We produced eight common inhalant allergen SPT reagents using total extract (Prolagen): *Dermatophagoides farinae*, *Dermatophagoides pteronyssinus*, oak, ragweed, mugwort, *Humulus japonicus* pollens, as well as cat and dog allergens. We compared the newly developed reagents with three commercially available SPT reagents (Allergopharma, Hollister-Stier, Lofarma). We measured total protein concentrations, sodium dodecyl sulphate-polyacrylamide gel electrophoresis (SDS-PAGE), major allergen concentration, and biological allergen potencies measured by immunoglobulin E (IgE) immunoblotting and ImmunoCAP inhibition test.

Results: Diagnostic values of these SPT reagents were expressed as positivity rate and concordance rate of the results from ImmunoCAP allergen-specific IgE test in 94 allergic patients. In vitro analysis showed marked differences in protein concentrations, SDS-PAGE features, major allergen concentrations, and biological allergen potencies of four different SPT reagents. In vivo analysis showed that positive rates and concordance rates of Prolagen[®] SPT reagents were similar compared to the three commercial SPT reagents.

Conclusion: The newly developed Prolagen[®] inhalant SPT reagents are not inferior to the commercially available SPT reagents in allergy diagnosis.

Keywords: Skin Prick Test; Allergens; Allergy and Immunology; Diagnosis

INTRODUCTION

Identification of allergen sensitization is important for the diagnosis and treatment of allergic diseases. Skin prick test (SPT) has been regarded as major standard method for identification of causative allergens in patients with allergic diseases.¹ However, studies evaluating different SPT reagents in their in vitro biological allergen potency and protein characteristics, as well as in vivo diagnostic value, are scarce.^{2,3}

Jung-Won Park 
<https://orcid.org/0000-0003-0249-8749>

Funding

This research was supported by a grant from the Korea Healthcare Technology R & D Project through Korean Health Industry Development Institute, which is funded by Republic of Korea's Ministry of Health and Welfare (HI14C1324).

Disclosure

Dr. Park JW reports serving as an unpaid chief technology officer for Prolagen; Dr. Kim JD, serving as chief executive officer for Prolagen. Dr. Park JW, Dr. Kim JD, Dr. Park KH, having an equity interest in Prolagen. These authors' interests did not influence academic fairness in conducting this study, analyzing results, and writing a paper. Other authors have no potential conflicts of interest to disclose.

Author Contributions

Conceptualization: Park JW, Lee JH, Park KH. Methodology: Lee J, Jeong KY, Sim DW. Product manufacturer: Kim JD. Data curation: Lee SC. Formal analysis: Sim DW, Lee SC. Investigation: Lee SC. Software: Lee SC. Validation: Lee SC. Writing - original draft: Lee SC. Writing - review & editing: Park JW.

Manufacturers of SPT products maintain their own quality control programs and allergen potency units for their reagents. These may cause differences in allergen potency and clinical validity of the products.^{4,5} In this context, standardization of SPT reagents should be warranted.^{6,7}

In Korea, three manufacturers (two European and one American company) have provided SPT reagents. However, the products may not reflect real exposure in Asian countries, including Korea. For example, white oak, which is used as raw material in commercial reagents, is not found in Korea, where sawtooth and Mongolian oak trees are the dominant species.^{8,9} The discrepancy between used raw material and real exposure may affect the diagnostic rate of oak pollinosis in Korea. Additionally, various house dust mite (HDM) isoallergens have been reported to be dominant in each country, and the diagnostic value may be affected by the types of isoallergen used in each SPT reagent.⁹ In this regard, development of SPT reagents that reflect the real allergen exposure in Korean environment is urgently needed.

Recently, we developed SPT reagents for 8 respiratory allergens that reflect real exposure of Korea.¹⁰ In this study, we compared allergen characteristics and clinical efficacy of the new SPT reagents using three different commercially available SPT reagents.

METHODS

Trial design

This prospective, double-blind study was permitted by the Institutional Review Board of Severance Hospital, Seoul, Korea. We explored biological activities of 8 different kinds of total extract allergen SPT reagents (*Dermatophagoides farinae*, *Dermatophagoides pteronyssinus*, pollens of oak, ragweed, mugwort, *Humulus japonicus*, cat and dog allergens) from four different manufacturers.

Patient selection

For this study, 94 respiratory allergic patients were enrolled from 109 preselected candidates. Patients with acute asthma exacerbation, severe skin diseases, and chronic diseases (such as autoimmune disease, immune deficiency and cancer), or those who were pregnant were excluded. The use of antihistamines, systemic corticosteroids (≥ 20 mg/day), and topical steroid was discontinued for at least seven days before testing.

Allergen extracts

We compared newly developed SPT reagents (Prolagen, Seoul, Korea) with three different commercial products (Hollister-Stier, Spokane, WA, USA; Allergopharma, Reinbek, Germany; Lofarma, Milano, Italy). To manufacture new SPT product, allergen extracts were prepared as previously described (HDM and pollen extracts).¹¹⁻¹³ In particular, we used sawtooth oak as the raw material of oak reagent. In respect of dog and cat, hair and dander were collected from designated animal hospitals. Both dogs and cats were trimmed before shampooing. Allergen extracts were prepared in ammonium bicarbonate buffer (pH 8.0) after defatting with ethyl ether. Subsequently, the extracts were dialyzed against distilled water, syringe filtered (0.22 μ m; Millipore, Bedford, MA, USA), and lyophilized. Finally, each reagent was stored in 50% glycerinated, 0.3% phenol saline.

SPT

SPT was performed with a 26-gauge needle on the upper back of patients by one experienced technician. Histamine (1.7 mg/mL in 0.3% phenol saline; Allergopharma) and saline were used as positive and negative controls, respectively. Wheals and flares, induced by the allergen and histamine, were measured 15 minutes after prick. SPT was considered positive if wheal diameter was ≥ 3 mm. Negative control must have shown no reaction. In addition to SPT, serum-specific immunoglobulin E (sIgE) levels in response to each allergen were measured using ImmunoCAP (Thermo Fisher Scientific, Uppsala, Sweden). Serum was stored at -20°C before ImmunoCAP measurement. The results were calculated in kU/L for immunoglobulin E (IgE) antibodies, and sIgE antibody values ≥ 0.35 kU/L were considered positive.

In vitro analysis of each reagent

To measure the protein concentration of the reagents, Bradford assay was used, and their integrity was assessed through Coomassie staining in sodium dodecyl sulphate-polyacrylamide gel electrophoresis (SDS-PAGE). Meanwhile, concentrations of each major allergen in SPT reagents were measured by two-site enzyme-linked immunosorbent assay (ELISA). For biological allergen potency evaluations, IgE immunoblotting using pooled sera from allergic patients. In addition, inhibition ImmunoCAP test was used to measure the 50% inhibitory concentration of each allergen.

Statistical analysis

Statistical comparison was conducted using IBM SPSS Statistics Version 23 (IBM Co., Armonk, NY, USA). Cohen's Kappa analysis was utilized to assess the diagnostic concordance rate of SPT reagents with ImmunoCAP. Kappa values were interpreted as follows: almost perfect (0.8–1.0), substantial (0.6–0.8), moderate (0.4–0.6), fair (0.2–0.4), and poor (< 0.2).¹⁴ *P* values < 0.05 were considered statistically significant.

Ethics statement

The present study protocol was reviewed and approved by the Institutional Review Board of Severance Hospital (approval No. 4-2015-0240). Informed consent was submitted by all subjects when they were enrolled.

RESULTS

Demographic data of study patients

Ninety-four patients with allergic diseases (bronchial asthma, allergic rhinitis, chronic urticarial, and anaphylaxis) were enrolled in this study to compare in vivo diagnostic properties of the reagents. Demographic data are shown in **Table 1**. Sixty-one patients (64.9%) were polysensitized to two or more allergens, and allergic rhinitis was the most common allergic disease.

SPT positivity and concordance rates compared with the ImmunoCAP results

Comparison of SPT results is shown in **Table 2**. Overall, positivity of newly developed Prolagen SPT was similar to that of commercial reagents, except for higher rate of Prolagen SPT shown in oak, ragweed, *H. japonicus* pollens, and cat allergen.

Concordance between the results of SPT reagents and serum sIgE levels is also shown in **Table 2**. Level of agreement between sIgE level and results of Prolagen SPT reagents were

Table 1. Baseline characteristics of participants

Parameters	No. (%) of patients (n = 94)
Age, yr	35.9 ± 13.4
Sex	
Female	54 (57.4)
Male	40 (42.6)
Sensitized allergen	
<i>D. farinae</i>	57 (60.6)
<i>D. pteronyssinus</i>	62 (65.9)
Oak	21 (22.3)
Ragweed	18 (19.1)
Mugwort	19 (20.2)
<i>H. japonicus</i>	16 (17.0)
Cat allergen	24 (25.5)
Dog allergen	26 (27.7)
Atopy	
Non-atopy	30 (31.9)
Monosensitization	3 (3.2)
Polysensitization	61 (64.9)
Clinical diagnosis	
Asthma	63 (67.0)
Allergic rhinitis	82 (87.2)
Chronic urticaria	5 (5.3)
Anaphylaxis	5 (3.2)
Atopic dermatitis	3 (3.2)

Data are shown as mean ± standard deviation or number (%).

almost perfect for mugwort pollen (kappa 0.849), substantial for oak pollen (kappa 0.670), moderate for *D. farinae*, *D. pteronyssinus*, *H. japonicus*, ragweed, and dog (kappa 0.402–0.591), and fair for cat (kappa 0.346). Concordance rates of four different SPT reagents in each allergen, except ragweed reagent by Lofarma, were not significantly different.

As the oak ImmunoCAP used white oak pollen as raw material, we coated the empty solid phase of ImmunoCAP with sawtooth pollen extract, and compared concordance rates of four SPT reagents. **Fig. 1** shows scattered graph of the two measurements using 71 atopic sera. However, results of ImmunoCAP using both raw materials were almost equivalent. Concordance rates of four SPT reagents were also similar whether white oak or sawtooth oak pollens were used as raw material for ImmunoCAP (**Table 3**).

In vitro analysis of each reagent

Results of protein quantification for each SPT reagents are shown in **Table 4**. In the case of *D. farinae*, *D. pteronyssinus*, and ragweed, Hollister-Stier was the highest. Other than those HDM allergens, Prolagen reagents showed the highest protein quantity.

For SDS-PAGE analysis, we uploaded equal volumes of SPT reagents to compare the protein contents that were applied to patients. SDS-PAGE features showed marked differences among the SPT reagents. Prolagen SPT reagents had especially strong SDS-PAGE bands for HDMs, oak, *H. japonicus*, and dog. Hollister-Stier SPT reagents had especially strong bands for ragweed pollen, and Lofarma SPT reagents had especially strong bands for mugwort pollen (**Fig. 2**).

Fig. 3 shows IgE immunoblotting features. Overall trend was similar to SDS-PAGE. Especially, for HDMs, ragweed, mugwort, *H. japonicus*, cat and dog allergens, Prolagen SPT reagents showed stronger IgE-binding than other reagents.

Table 2. SPT positivity and concordance rates compared with ImmunoCAP results

Allergens	Products	Results			Agreement			Kappa analysis	
		Negative	Positive	Positive, %	Negative, %	Positive, %	Total, % (agree/total)	κ	P value
<i>D. farinae</i>	ImmunoCAP	43	51	54.3	-	-	-	-	-
	Hollister-Stier	31	63	67.0	71	80	77 (72/94)	0.520	< 0.001
	Allergopharma	39	55	58.5	80	83	82 (77/94)	0.635	< 0.001
	Lofarma	31	63	67.0	77	82	80 (75/94)	0.589	< 0.001
	Prolagen	35	59	62.8	74	85	81 (76/94)	0.591	< 0.001
<i>D. pteronyssinus</i>	ImmunoCAP	37	57	60.6	-	-	-	-	-
	Hollister-Stier	33	61	64.9	74	85	81 (76/94)	0.587	< 0.001
	Allergopharma	42	52	55.3	76	84	81 (76/94)	0.603	< 0.001
	Lofarma	38	56	59.6	76	87	83 (78/94)	0.633	< 0.001
	Prolagen	35	59	62.8	74	85	81 (76/94)	0.591	< 0.001
Oak	ImmunoCAP	76	18	19.1	-	-	-	-	-
	Hollister-Stier	N/A	N/A	N/A	N/A	N/A	N/A	N/A	N/A
	Allergopharma	77	17	18.1	95	80	93 (87/94)	0.754	< 0.001
	Lofarma	76	18	19.1	96	83	94 (88/94)	0.794	< 0.001
	Prolagen	74	20	21.3	93	94	89 (84/94)	0.670	< 0.001
Ragweed	ImmunoCAP	77	17	18.1	-	-	-	-	-
	Hollister-Stier	82	12	12.8	92	55	86 (81/94)	0.473	< 0.001
	Allergopharma	83	11	11.7	91	50	85 (80/94)	0.417	< 0.001
	Lofarma	85	9	9.6	89	31	81 (76/94)	0.209	0.072
	Prolagen	77	17	18.1	91	59	85 (80/94)	0.497	< 0.001
Mugwort	ImmunoCAP	78	16	17.0	-	-	-	-	-
	Hollister-Stier	78	16	17.0	96	81	94 (88/94)	0.774	< 0.001
	Allergopharma	78	16	17.0	97	88	96 (90/94)	0.849	< 0.001
	Lofarma	77	17	18.1	95	79	93 (87/94)	0.743	< 0.001
	Prolagen	78	16	17.0	97	88	96 (90/94)	0.849	< 0.001
<i>H. japonicus</i>	ImmunoCAP	80	14	14.9	-	-	-	-	-
	Hollister-Stier	N/A	N/A	N/A	N/A	N/A	N/A	N/A	N/A
	Allergopharma	74	20	21.3	90	53	83 (78/94)	0.429	< 0.001
	Lofarma	N/A	N/A	N/A	N/A	N/A	N/A	N/A	N/A
	Prolagen	71	23	24.5	90	59	84 (79/94)	0.502	< 0.001
Cat allergen	ImmunoCAP	73	21	22.3	-	-	-	-	-
	Hollister-Stier	59	36	38.3	84	63	78 (73/94)	0.487	< 0.001
	Allergopharma	N/A	N/A	N/A	N/A	N/A	N/A	N/A	N/A
	Lofarma	69	25	26.6	87	61	81 (76/94)	0.483	< 0.001
	Prolagen	49	45	47.9	75	55	68 (64/94)	0.346	< 0.001
Dog allergen	ImmunoCAP	72	22	23.4	-	-	-	-	-
	Hollister-Stier	66	28	29.8	83	52	74 (70/94)	0.367	< 0.001
	Allergopharma	N/A	N/A	N/A	N/A	N/A	N/A	N/A	N/A
	Lofarma	63	31	33.0	83	57	76 (71/94)	0.349	< 0.001
	Prolagen	67	27	28.7	83	53	74 (71/94)	0.402	< 0.001

SPT = skin prick test, N/A = not available.

Two-site ELISA measurements for major allergens within the reagents were also measured (**Fig. 4**). For HDM group 1 and 2 major allergens, Hollister-Stier and Prolagen reagents were higher compared to the others. In regards to group 1 major allergen of cat and dog, Hollister-Stier and Prolagen reagents had excellent level of allergen component, respectively.

Finally, channel-activating protease (CAP) inhibition study was used to evaluate the total allergen potency per protein content of SPT reagents (**Fig. 5**). Total allergen potencies per protein content of four different SPT reagents were similar, except for low allergen potency observed in Prolagen cat and dog reagents. CAP inhibition study showed outstanding allergenicity for cat SPT of Hollister-Stier, and dog SPT of Lofarma. Despite high protein concentration in Prolagen product, total allergen potency of cat and dog SPT reagents were low.

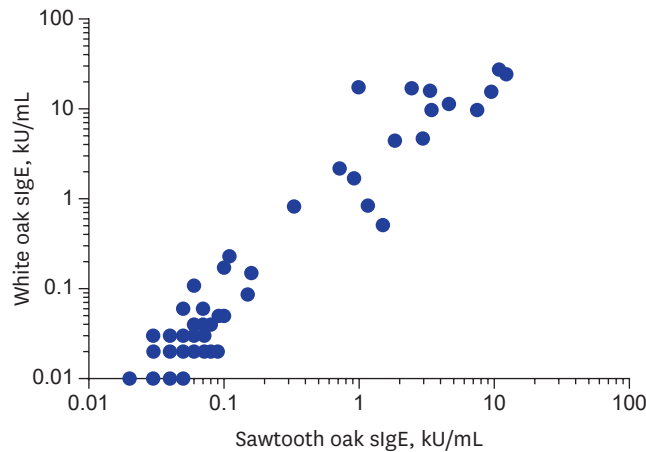


Fig. 1. Scatter plot comparing sIgE levels of sawtooth oak (x-axis) and white oak (y-axis). sIgE = specific immunoglobulin E.

DISCUSSION

As we mentioned above, discrepancies in allergen potency between commercial SPT reagents have been already reported.^{5,15} We compared 8 kinds of SPT reagents from 4 different manufacturers about their allergenic contents, allergenicity, and clinical validity using in vitro and in vivo methods.

Regarding HDMS, Hollister-Stier had the highest amount of protein among all products. This feature was consistent to the result of two-site ELISA measurement of groups 1 and 2 of major HDM allergens. Although marked differences were observed in their in vitro results,

Table 3. Comparison of concordance rates between oak SPT reagents and sIgE measurement by white oak or sawtooth oak coated ImmunoCAP

Allergens coated to ImmunoCAP	Products	Agreement			Kappa analysis	
		Negative, %	Positive, %	Total, % (agree/total)	κ	P value
Sawtooth oak	Hollister-Stier	N/A	N/A	N/A	N/A	N/A
	Allergopharma	96.5	75.0	91.8 (68/74)	0.749	< 0.001
	Lofarma	94.8	93.7	94.5 (70/74)	0.847	< 0.001
	Prolagen	91.3	68.7	86.5 (64/74)	0.601	< 0.001
White oak	Hollister-Stier	N/A	N/A	N/A	N/A	N/A
	Allergopharma	98.2	76.4	93.2 (69/74)	0.796	< 0.001
	Lofarma	96.4	94.1	95.9 (71/74)	0.888	< 0.001
	Prolagen	92.9	70.5	87.8 (65/74)	0.649	< 0.001

SPT = skin prick test, sIgE = specific immunoglobulin E, N/A = not available.

Table 4. Protein concentrations for SPT reagents of each allergen

Allergens	Protein concentration, µg/mL			
	Hollister-Stier	Allergopharma	Lofarma	Prolagen
<i>D. farinae</i>	2,035.4	94.9	572.7	915.9
<i>D. pteronyssinus</i>	1,283.5	87.8	173.1	753.5
Oak	N/A	175.6	226.6	801.8
Ragweed	3,243.9	174.8	519.1	994.6
Mugwort	N/A	400.4	408.8	927.0
<i>H. japonicus</i>	N/A	180.8	N/A	802.1
Cat allergen	24.4	N/A	18.2	102.5
Dog allergen	17.8	N/A	33.3	189.6

SPT = skin prick test, N/A = not available.

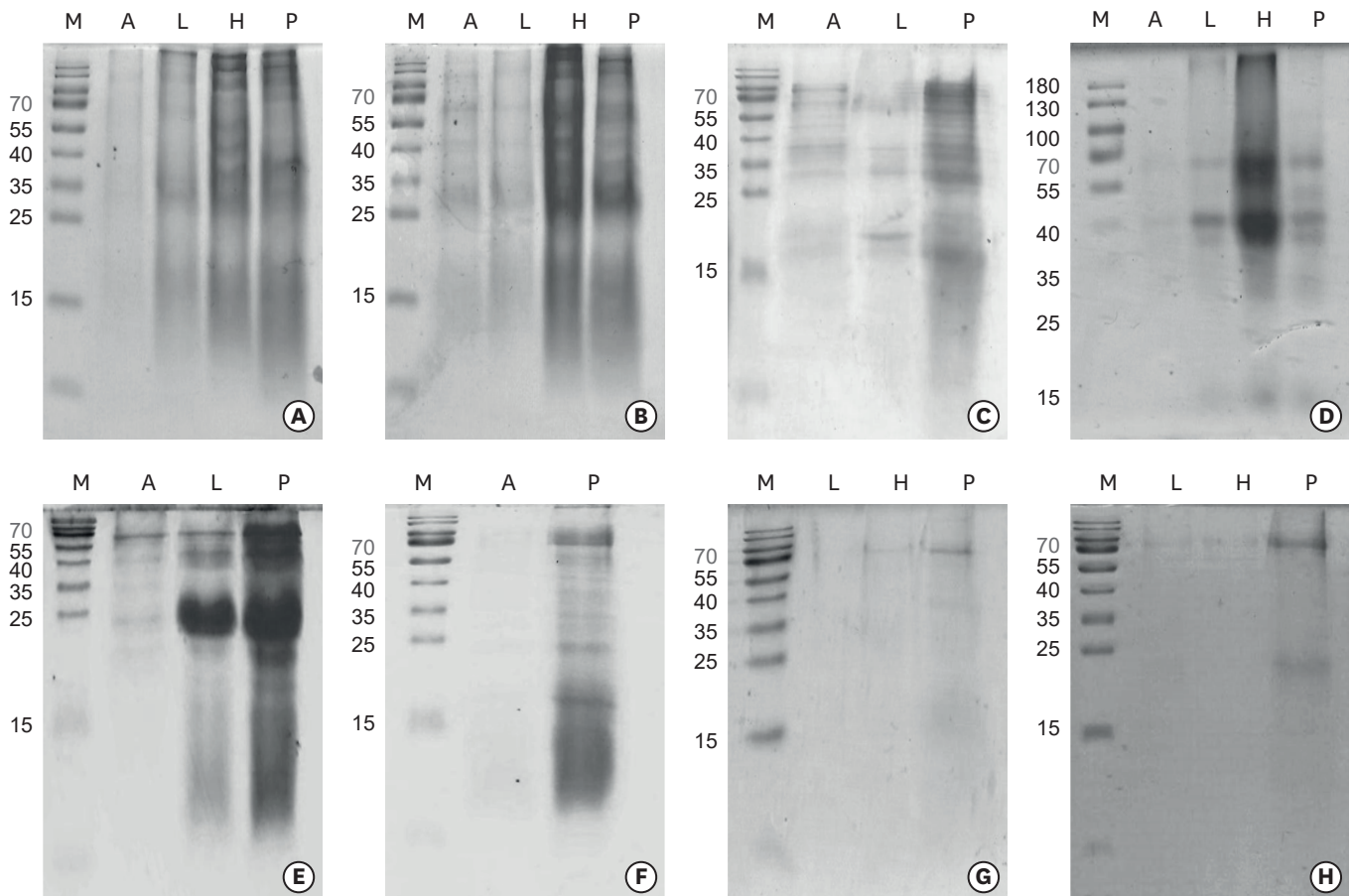


Fig. 2. SDS-PAGE features of SPT reagents for each allergen. (A) *D. farinae*, (B) *D. pteronyssinus*, (C) oak, (D) ragweed, (E) mugwort, (F) *H. japonicus*, (G) cat allergen, (H) dog allergen.

SDS-PAGE = sodium dodecyl sulphate-polyacrylamide gel electrophoresis, SPT = skin prick test, M = Marker, A = Allergopharma, L = Lofarma, H = Hollister-Stier, P = Prolagen.

diagnostic accuracy of concordance rates between SPT and ImmunoCAP did not show any significant differences among the SPT reagents.

Prolagen reagent showed excellent overall *in vitro* results in regards to oak allergen. However, *in vivo* data, such as concordance rate or kappa value, was relatively lower than those of other 2 reagents. We presumed that the differences between Prolagen product and the others might originate from the difference in raw materials used. Commercial SPT and ImmunoCAP products have used white oak as raw material, whereas Prolagen product was made of sawtooth oak pollen extract. Previously, Jeong et al.⁸ revealed that Mongolian oak and sawtooth oak are the dominant species in Korea, although the study also reported strong cross-reactivity between Fagaceae family (sawtooth oak, Mongolian oak, white oak, and birch pollens). Therefore, we also compared the concordance rates between white or sawtooth oaks pollen extract coated ImmunoCAP sIgE tests and the SPT, and found that the results were almost equivalent whether saw tooth or white oak were used for ImmunoCAP.

In the case of ragweed pollen SPT reagents, protein concentration of Hollister-Stier was overwhelmingly high. However, the concordance rate of Hollister-Stier was not any noticeable differences from Allergopharma and Prolagen products.

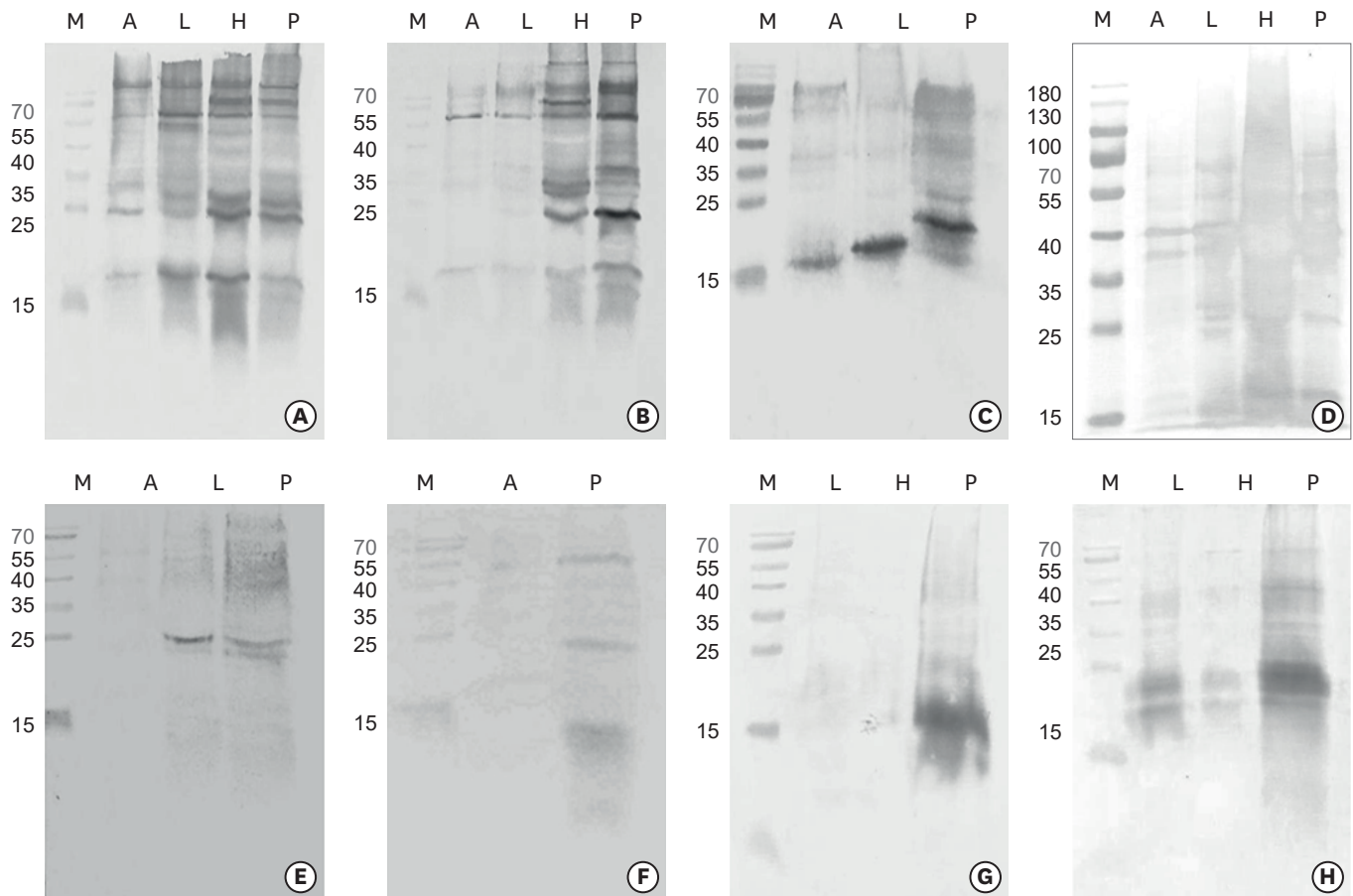


Fig. 3. IgE immunoblotting features of the SPT reagents using the pooled serum of atopic patients (n = 5). (A) *D. farinae*, (B) *D. pteronyssinus*, (C) oak, (D) ragweed, (E) mugwort, (F) *H. japonicus*, (G) cat allergen, (H) dog allergen. IgE = immunoglobulin E, SPT = skin prick test, M = Marker, A = Allergopharma, L = Lofarma, H = Hollister-Stier, P = Prolagen.

For mugwort pollen, Allergopharma and Prolagen products showed better results than the other products. In Korea, mugwort is especially important as weed pollinosis, and it is worth noticing that Prolagen product has high diagnostic value.

H. japonicus, a weed belonging to the Cannabis family and Urticales order, is one of the principal allergenic plants that induce pollinosis between mid-August and late September.¹⁶⁻¹⁸ Furthermore, the sensitization rate in Korea may increase due to climate change.¹⁹ We compared new reagent with that of Allergopharma, which was the only commercially-available reagent in Korea. Our result showed that Prolagen SPT reagent had higher protein content determined by Bradford and SDS-PAGE, but the concordance rates were equivalent to each other.

In regards to cat allergen, Hollister-Stier showed the highest level of *Fel d 1* and better allergenicity than the other reagents. On the other hand, Prolagen reagent's allergenicity and concordance rate with ImmunoCAP were lower compared to other 2 reagents, despite of higher protein concentration of Prolagen SPT reagent. Similar pattern was found at dog allergen. Prolagen product displayed significantly higher protein concentration and *Can f1* concentrations, while CAP inhibition results showed weak allergenicity per protein concentration compared to the other products. For dog allergen, in addition to group 1 major allergen, group 2 and 5 major allergens are also important.²⁰ These results may have been caused by the use of only trimmed

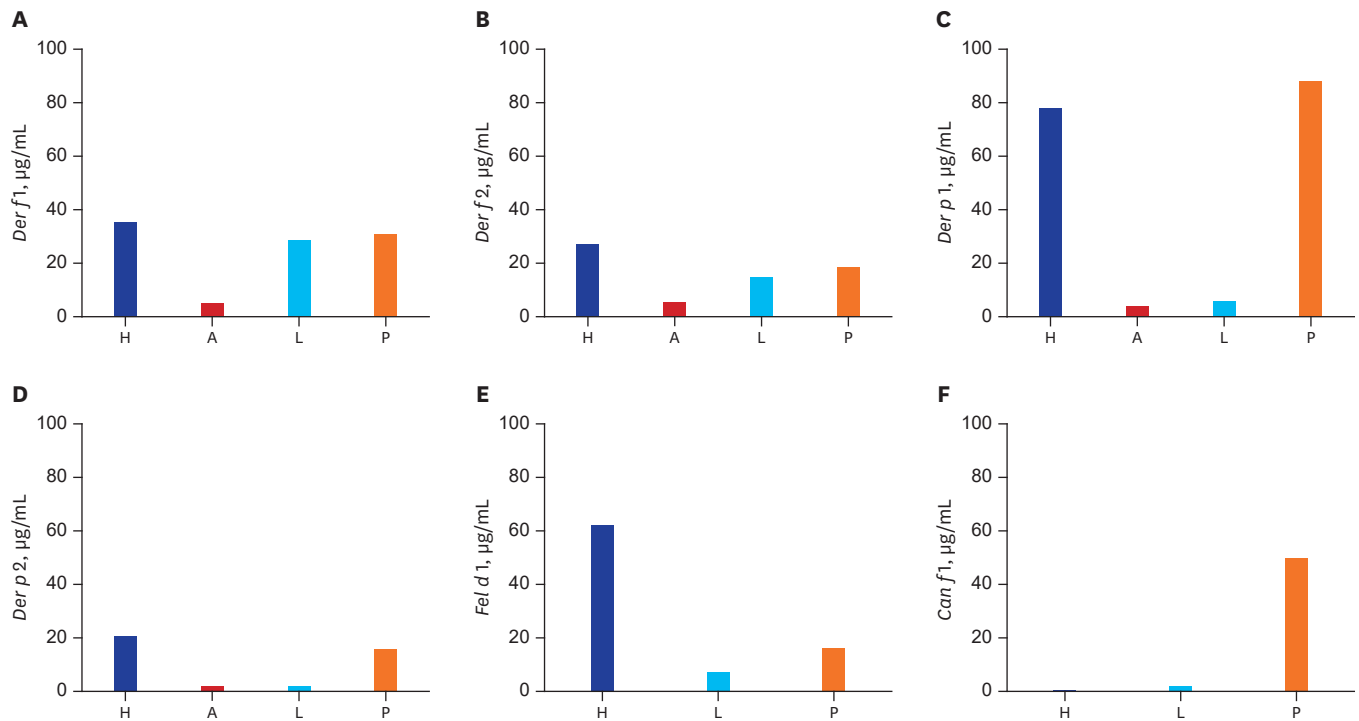


Fig. 4. Two-site ELISA for allergen components. (A) *Der f 1*, (B) *Der f 2*, (C) *Der p 1*, (D) *Der p 2*, (E) *Fel d 1*, (F) *Can f 1*. ELISA = enzyme-linked immunosorbent assay, A = Allergopharma, L = Lofarma, H = Hollister-Stier, P = Prolagen.

hair of cat and dog from animal hospital, unlike other companies that collected hair and dander by extensive scrubbing with razor. Our study showed significant variation in allergen potency among the companion animal SPT extracts, which was consistent with the finding of Curin et al.²¹ who reported that variability in SPT reagents had a negative influence on the diagnosis of dog allergy. Despite of the abovementioned results, concordance rate of Prolagen product, compared to ImmunoCAP, was not inferior to the other products.

Findings of the current study can provide clinically important information to Korean allergists. Although comparison between SPT and CAP systems have been performed before, any comparison study among the commercially available inhalation allergen SPT reagents in Korea was not conducted.²² Additionally, considering that all reagents for diagnosis and immunotherapy is dependent on imports, this study also serves as an inspiring attempt to develop Korean SPT reagents that can reflect the unique Korean environment.^{8,23}

However, our study had some limitations. We did not consider the differences in vehicle characteristics of SPT reagents. Possibility of degradation resulting from storage condition and duration of storage also has not been considered in this study, even the reagents were evaluated within the documented expiration date. Moreover, Prolagen product has not been formally approved for marketing; therefore, it cannot be currently applied in the clinical field. In order for Prolagen product to be used in clinical settings, further well-designed clinical trials are required.

In conclusion, there are differences in allergenic potency and concentration of major allergens among SPT reagents. This study confirmed that, when it comes to the diagnosis of respiratory allergic diseases, newly developed Prolagen SPT reagents are not inferior to the commercial reagents.

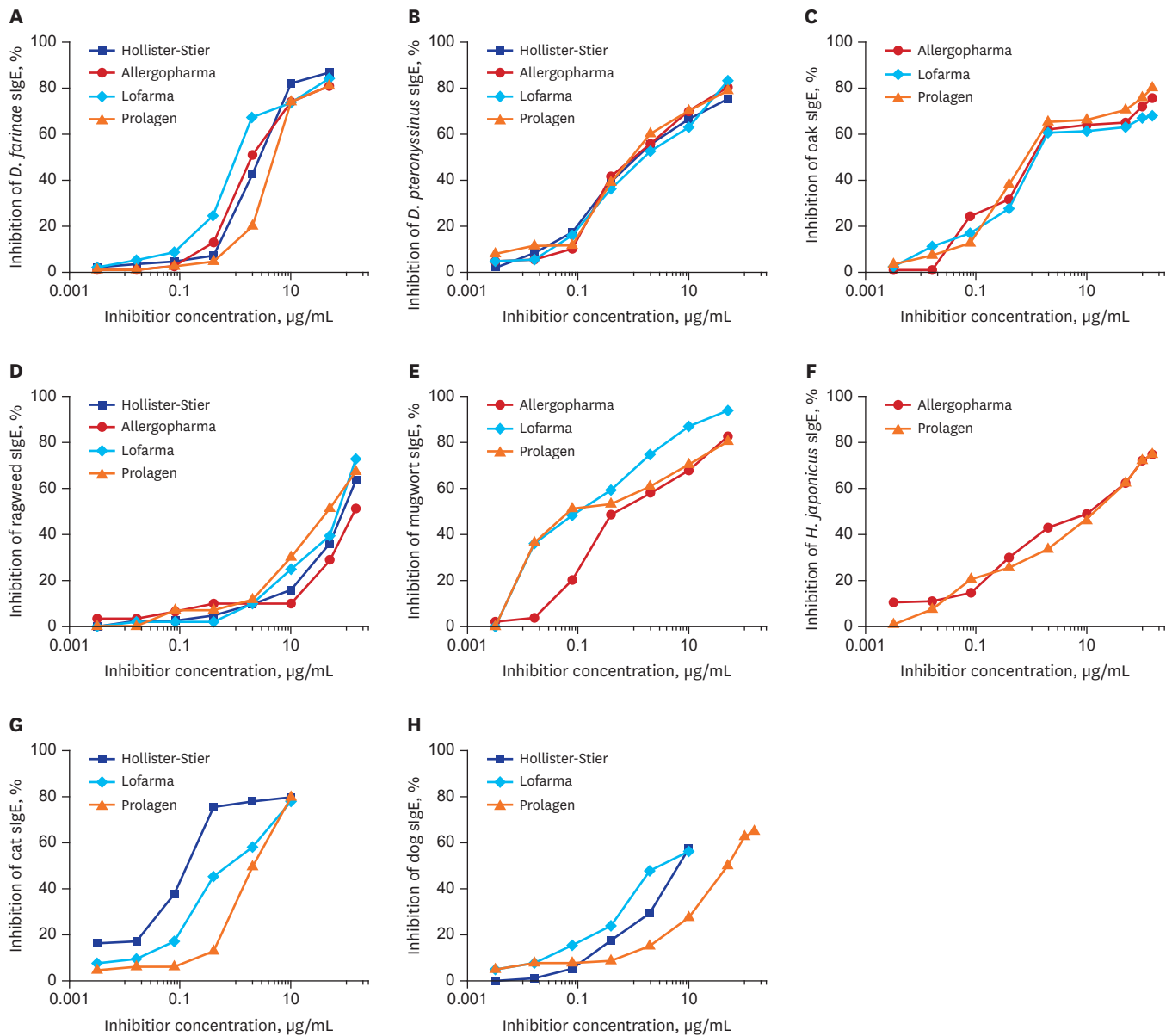


Fig. 5. CAP inhibition results for each allergen. (A) *D. farinae*, (B) *D. pteronyssinus*, (C) oak, (D) ragweed, (E) mugwort, (F) *H. japonicus*, (G) cat allergen, (H) dog allergen. CAP = channel-activating protease.

REFERENCES

1. Bousquet J, Heinzerling L, Bachert C, Papadopoulos NG, Bousquet PJ, Burney PG, et al. Practical guide to skin prick tests in allergy to aeroallergens. *Allergy* 2012;67(1):18-24. [PUBMED](#) | [CROSSREF](#)
2. Bernstein IL, Li JT, Bernstein DI, Hamilton R, Spector SL, Tan R, et al. Allergy diagnostic testing: an updated practice parameter. *Ann Allergy Asthma Immunol* 2008;100(3 Suppl 3):S1-148. [PUBMED](#) | [CROSSREF](#)
3. Adkinson NE, Middleton E. *Middleton's Allergy: Principles and Practice*. 8th ed. Philadelphia, PA: Elsevier/Saunders; 2014.

4. Focke M, Marth K, Flicker S, Valenta R. Heterogeneity of commercial timothy grass pollen extracts. *Clin Exp Allergy* 2008;38(8):1400-8.
[PUBMED](#) | [CROSSREF](#)
5. Nielsen NH, Dirksen A, Mosbech H, Launbjerg J, Biering I, Soborg M. Skin prick testing with standardized extracts from 3 different manufacturers. A comparative randomized study. *Allergol Immunopathol (Madr)* 1992;20(6):246-8.
[PUBMED](#)
6. Meyer CH, Bond JF, Chen MS, Kasaian MT. Comparison of the levels of the major allergens Der-P-I and Der-P-II in standardized extracts of the house-dust mite, *Dermatophagoides pteronyssinus*. *Clin Exp Allergy* 1994;24(11):1041-8.
[PUBMED](#) | [CROSSREF](#)
7. Larsen JN, Houghton CG, Vega ML, Lowenstein H. Manufacturing and standardizing allergen extracts in Europe. *Clin Allergy Immunol* 2008;21:283-301.
[PUBMED](#)
8. Jeong KY, Son M, Park JH, Park KH, Park HJ, Lee JH, et al. Cross-reactivity between oak and birch pollens in Korean tree pollinosis. *J Korean Med Sci* 2016;31(8):1202-7.
[PUBMED](#) | [CROSSREF](#)
9. Jeong KY, Park JW, Hong CS. House dust mite allergy in Korea: the most important inhalant allergen in current and future. *Allergy Asthma Immunol Res* 2012;4(6):313-25.
[PUBMED](#) | [CROSSREF](#)
10. Kim TB, Kim KM, Kim SH, Kang HR, Chang YS, Kim CW, et al. Sensitization rates for inhalant allergens in Korea; a multi-center study. *J Asthma Allergy Clin Immunol* 2003;23(3):483-93.
11. Jeong KY, Choi SY, Lee JH, Lee IY, Yong TS, Lee JS, et al. Standardization of house dust mite extracts in Korea. *Allergy Asthma Immunol Res* 2012;4(6):346-50.
[PUBMED](#) | [CROSSREF](#)
12. Jeong KY, Son M, Choi SY, Park KH, Park HJ, Hong CS, et al. Standardization of weed pollen extracts, Japanese hop and mugwort, in Korea. *Yonsei Med J* 2016;57(2):399-406.
[PUBMED](#) | [CROSSREF](#)
13. Jeong KY, Hong CS, Lee JS, Park JW. Optimization of allergen standardization. *Yonsei Med J* 2011;52(3):393-400.
[PUBMED](#) | [CROSSREF](#)
14. Landis JR, Koch GG. The measurement of observer agreement for categorical data. *Biometrics* 1977;33(1):159-74.
[PUBMED](#) | [CROSSREF](#)
15. Eichler I, Gotz M, Jarisch R, Eichler HG, Moss R. Reproducibility of skin prick testing with allergen extracts from different manufacturers. *Allergy* 1988;43(6):458-63.
[PUBMED](#) | [CROSSREF](#)
16. Oh JW. Characteristics of allergic pollens and the recent increase of sensitization rate to weed pollen in childhood in Korea. *Korean J Pediatr* 2008;51(4):355-61.
[CROSSREF](#)
17. Liu ZG, Song JJ, Kong XL. A study on pollen allergens in China. *Biomed Environ Sci* 2010;23(4):319-22.
[PUBMED](#) | [CROSSREF](#)
18. Park HJ, Lee JH, Park KH, Kim KR, Han MJ, Choe H, et al. A six-Year study on the changes in airborne pollen counts and skin positivity rates in Korea: 2008–2013. *Yonsei Med J* 2016;57(3):714-20.
[PUBMED](#) | [CROSSREF](#)
19. Jin HJ, Choi GS, Shin YS, Kim JH, Kim JE, Ye YM, et al. The Allergenic Potency of Japanese hop pollen is increasing with environmental changes in Korea. *Allergy Asthma Immunol Res* 2013;5(5):309-14.
[PUBMED](#) | [CROSSREF](#)
20. Bjerg A, Winberg A, Berthold M, Mattsson L, Borres MP, Ronmark E. A population-based study of animal component sensitization, asthma, and rhinitis in schoolchildren. *Pediatr Allergy Immunol* 2015;26(6):557-63.
[PUBMED](#) | [CROSSREF](#)
21. Curin M, Reiningger R, Swoboda I, Focke M, Valenta R, Spitzauer S. Skin prick test extracts for dog allergy diagnosis show considerable variations regarding the content of major and minor dog allergens. *Int Arch Allergy Immunol* 2011;154(3):258-63.
[PUBMED](#) | [CROSSREF](#)
22. Nam YH, Lee SK. Comparison between skin prick test and serum immunoglobulin E by CAP system to inhalant allergens. *Ann Allergy Asthma Immunol* 2017;118(5):608-13.
[PUBMED](#) | [CROSSREF](#)
23. Park HJ, Lee JH, Park KH, Ann HW, Jin MN, Choi SY, et al. A nationwide survey of inhalant allergens sensitization and levels of indoor major allergens in Korea. *Allergy Asthma Immunol Res* 2014;6(3):222-7.
[PUBMED](#) | [CROSSREF](#)