

ADOPTED: 23 March 2022

doi: 10.2903/j.efsa.2022.7286

Safety and efficacy of a feed additive consisting of butylated hydroxytoluene (BHT) for all animal species (Lanxess Deutschland GmbH)

EFSA Panel on Additives and Products or Substances used in Animal Feed (FEEDAP), Vasileios Bampidis, Giovanna Azimonti, Maria de Lourdes Bastos, Henrik Christensen, Birgit Dusemund, Mojca Fašmon Durjava, Maryline Kouba, Marta López-Alonso, Secundino López Puente, Francesca Marcon, Baltasar Mayo, Alena Pechová, Mariana Petkova, Fernando Ramos, Yolanda Sanz, Roberto Edoardo Villa, Ruud Woutersen, Antonio Finizio, Ivana Teodorovic, Gabriele Aquilina, Georges Bories, Jurgen Gropp, Carlo Nebbia and Matteo Innocenti

Abstract

Following a request from the European Commission, the Panel on Additives and Products or Substances used in Animal Feed (FEEDAP) was asked to deliver a scientific opinion on the safety and efficacy of butylated hydroxytoluene (BHT) as a feed additive for all animal species. The additive BHT is considered safe for chickens for fattening and weaned piglets at the maximum proposed concentration of 150 mg/kg complete feed. This conclusion is extended to chickens reared for laying and extrapolated to pigs for fattening. In the absence of data, no conclusion on the safety for the other target species could be drawn. The exposure of the consumer to BHT from tissues and products of animals fed the additive ranged from 1% to 3% of the acceptable daily intake (ADI). The FEEDAP Panel concluded that the use of BHT as a feed additive at the proposed conditions of use is of no concern for the safety of the consumers. Exposure of the user to BHT via inhalation is likely; however, the Panel is not in the position to conclude on the potential inhalation toxicity of the additive. BHT is a skin and eye irritant, no conclusions can be drawn on the potential of the additive to be a skin sensitiser. In the absence of data, the FEEDAP Panel cannot conclude on the safety of BHT for the environment. The additive BHT is considered an efficacious antioxidant in feedingstuffs for all animal species.

© 2022 Wiley-VCH Verlag GmbH & Co. KGaA on behalf of the European Food Safety Authority.

Keywords: Butylated hydroxytoluene, BHT, technological additive, antioxidants, safety, efficacy, all animal species

Requestor: European Commission

Question number: EFSA-Q-2011-01150

Correspondence: feedap@efsa.europa.eu

Panel members: Vasileios Bampidis, Giovanna Azimonti, Maria de Lourdes Bastos, Henrik Christensen, Birgit Dusemund, Mojca Fašmon Durjava, Maryline Kouba, Marta López-Alonso, Secundino López Puente, Francesca Marcon, Baltasar Mayo, Alena Pechová, Mariana Petkova, Fernando Ramos, Yolanda Sanz, Roberto Edoardo Villa and Ruud Woutersen.

Legal notice: Relevant information or parts of this scientific output have been blackened in accordance with the confidentiality requests formulated by the applicant pending a decision thereon by the European Commission. The full output has been shared with the European Commission, EU Member States and the applicant. The blackening will be subject to review once the decision on the confidentiality requests is adopted by the European Commission.

Declarations of interest: The declarations of interest of all scientific experts active in EFSA's work are available at <https://ess.efsa.europa.eu/doi/doiweb/doisearch>.

Suggested citation: EFSA FEEDAP Panel (EFSA Panel on Additives and Products or Substances used in Animal Feed), Bampidis V, Azimonti G, Bastos ML, Christensen H, Dusemund B, Fašmon Durjava M, Kouba M, López-Alonso M, López Puente S, Marcon F, Mayo B, Pechová A, Petkova M, Ramos F, Sanz Y, Villa RE, Woutersen R, Finizio A, Teodorovic I, Aquilina G, Bories G, Gropp J, Nebbia C and Innocenti M, 2022. Scientific Opinion on the safety and efficacy of a feed additive consisting of butylated hydroxytoluene (BHT) for all animal species (Lanxess Deutschland GmbH). EFSA Journal 2022;20(5):7286, 21 pp. <https://doi.org/10.2903/j.efsa.2022.7286>

ISSN: 1831-4732

© 2022 Wiley-VCH Verlag GmbH & Co. KGaA on behalf of the European Food Safety Authority.

This is an open access article under the terms of the [Creative Commons Attribution-NoDerivs](https://creativecommons.org/licenses/by/4.0/) License, which permits use and distribution in any medium, provided the original work is properly cited and no modifications or adaptations are made.



The EFSA Journal is a publication of the European Food Safety Authority, a European agency funded by the European Union.



Table of contents

Abstract.....	1
1. Introduction.....	4
1.1. Background and Terms of Reference.....	4
1.2. Additional information.....	4
2. Data and methodologies.....	4
2.1. Data.....	4
2.2. Methodologies.....	5
3. Assessment.....	5
3.1. Characterisation.....	5
3.1.1. Characterisation of the additive.....	5
3.1.2. Stability and homogeneity.....	6
3.1.3. Conditions of use.....	6
3.2. Safety.....	6
3.2.1. Safety for the target species.....	6
3.2.1.1. Safety for chickens for fattening.....	7
3.2.1.2. Safety for weaned piglets.....	7
3.2.1.3. Conclusions on safety for the target species.....	8
3.2.2. Safety for the consumer.....	8
3.2.2.1. Absorption, distribution, metabolism, excretion (ADME) and residues.....	8
3.2.2.1.1. ADME in laboratory animals.....	8
3.2.2.1.2. ADME in target species.....	8
3.2.2.1.3. Conclusions on ADME.....	9
3.2.2.2. Residue studies.....	10
3.2.2.2.1. BHT residues in milk.....	10
3.2.2.2.2. BHT residues in laying hen edible tissues and egg.....	10
3.2.2.2.3. BHT residues in mini pig edible tissues.....	10
3.2.2.3. Toxicological studies.....	11
3.2.2.4. Assessment of Consumer exposure and Consumer safety assessment.....	12
3.2.2.5. Conclusions on safety for the consumer.....	14
3.2.3. Safety for the user.....	14
3.2.3.1. Effects on the respiratory system.....	14
3.2.3.2. Effects on the eyes and skin.....	14
3.2.3.3. Conclusions on the safety for the user.....	14
3.2.4. Safety for the environment.....	14
3.2.4.1. Phase I.....	14
3.2.4.2. Phase II.....	14
3.3. Efficacy.....	15
4. Conclusions.....	15
5. Documentation provided to EFSA/Chronology.....	15
References.....	16
Abbreviations.....	17
Appendix A – Detailed results of chronic exposure calculation.....	19
Annex A – Executive Summary of the Evaluation Report of the European Union Reference Laboratory for Feed Additives on the Method(s) of the Analysis for butylated hydroxytoluene (BHT).....	21

1. Introduction

1.1. Background and Terms of Reference

Regulation (EC) No 1831/2003¹ establishes the rules governing the Community authorisation of additives for use in animal nutrition. In particular, Article 10(2) of that Regulation also specifies that for existing products within the meaning of Article 10(1), an application shall be submitted in accordance with Article 7, at the latest one year before the expiry date of the authorisation given pursuant to Directive 70/524/EEC for additives with a limited authorisation period, and within a maximum of seven years after the entry into force of this Regulation for additives authorised without a time limit or pursuant to Directive 82/471/EEC. In particular, Article 10(2) of that Regulation specifies that for existing products within the meaning of Article 10(1), an application shall be submitted in accordance with Article 7, within a maximum of seven years after the entry into force of this Regulation.

The European Commission received a request from the company Lanxess Deutschland GmbH² for re-evaluation of butylated hydroxytoluene (BHT), when used as a feed additive for all animal species (category: technological additives; functional group: antioxidants).

According to Article 7(1) of Regulation (EC) No 1831/2003, the Commission forwarded the application to the European Food Safety Authority (EFSA) as an application under Article 10(2) (re-evaluation of an authorised feed additive). EFSA received directly from the applicant the technical dossier in support of this application. The particulars and documents in support of the application were considered valid by EFSA as of 28 March 2012.

According to Article 8 of Regulation (EC) No 1831/2003, EFSA, after verifying the particulars and documents submitted by the applicant, shall undertake an assessment in order to determine whether the feed additive complies with the conditions laid down in Article 5. EFSA shall deliver an opinion on the safety for the target animals, consumer, user and the environment and on the efficacy of the feed additive consisting of butylated hydroxytoluene (BHT), when used under the proposed conditions of use (see Section 3.1.3).

1.2. Additional information

Butylated hydroxytoluene (BHT) is included in the European Union Register of Feed Additives pursuant to Regulation (EC) No 1831/2003.

BHT (E 321) is authorised for use in food as an antioxidant³ up to a maximum level of 400 mg/kg.

The BHT was assessed in the past by the Scientific Committee for Food (SCF) in 1989 (European Commission, 1989), by the by FAO/WHO Expert Committee on Food Additives (JECFA) several times, the latest in 1996 (WHO, 1996), by EFSA in 2012 (EFSA ANS Panel, 2012) and more recently by the Agence nationale de sécurité sanitaire de l'alimentation, de l'environnement et du travail (ANSES) (ANSES, 2016), by the Norwegian Scientific Committee for Food and Environment (VKM) (VKM, 2019), and the Scientific Committee on Consumer Safety (SCCS) (SCCS, 2021).

2. Data and methodologies

2.1. Data

The present assessment is based on data submitted by the applicant in the form of a technical dossier⁴ in support of the authorisation request for the use of BHT as a feed additive.

¹ Regulation (EC) No 1831/2003 of the European Parliament and of the council of 22 September 2003 on the additives for use in animal nutrition. OJ L 268, 18.10.2003, p. 29.

² Lanxess Deutschland GmbH. Kennedyplatz 1, 50569, Cologne, Germany.

³ Regulation (EC) no 1333/2008 of the European Parliament and of the council of 16 December 2008 on food additives. OJ L 354, 31.12.2008, p. 16–33.

⁴ FEED dossier reference: FAD-2010-0300.

The FEEDAP Panel used the data provided by the applicant together with data from other sources, such as previous risk assessments by EFSA or other expert bodies, peer-reviewed scientific papers and other scientific reports to deliver the present output.

EFSA has verified the European Union Reference Laboratory (EURL) report as it relates to the methods used for the control of the active substance in animal feed. The Executive Summary of the EURL report can be found in Annex A.⁵

2.2. Methodologies

The approach followed by the FEEDAP Panel to assess the safety and the efficacy of BHT is in line with the principles laid down in Regulation (EC) No 429/20087 and the relevant guidance documents: Guidance on studies concerning the safety of use of the additive for users/workers (EFSA FEEDAP Panel, 2012), Guidance on the assessment of the safety of feed additives for the consumer (EFSA FEEDAP Panel, 2017a), Guidance on the identity, characterisation and conditions of use of feed additives (EFSA FEEDAP Panel, 2017b), Guidance on the assessment of the safety of feed additives for the target species (EFSA FEEDAP Panel, 2017c), Guidance on the assessment of the efficacy of feed additives (EFSA FEEDAP Panel, 2018) and Guidance on the assessment of the safety of feed additives for the environment (EFSA FEEDAP Panel, 2019).

3. Assessment

BHT is intended to be used as a technological feed additive (functional group: antioxidant) in feed for all animal species.

3.1. Characterisation

3.1.1. Characterisation of the additive

BHT is a crystalline powder produced by chemical synthesis, following two similar synthetic routes.

The additive is equivalent to the active substance and contains by specification at least [redacted] of BHT [redacted]. The additive is a colourless, crystalline powder, with a bulk density of [redacted].⁶ The structural formula of the additive is given in Figure 1.

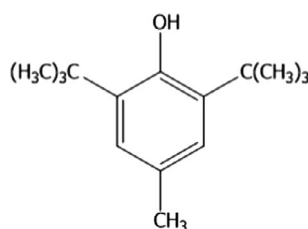


Figure 1: Structural formula of BHT

The analysis of 11 batches of the additive (six⁷ and five⁸ batches, manufactured following the first and the second manufacturing process, respectively) showed concentrations of BHT [redacted] in compliance with the specifications and with the specifications set by the Commission Regulation (EU) No 231/2012⁹ for its use as a food additive (BHT ≥ 99%).

⁵ The full report is available on the EURL website: https://joint-research-centre.ec.europa.eu/eurl-fa-eurl-feed-additives/eurl-fa-authorisation/eurl-fa-evaluation-reports_en

⁶ Supplementary Information December 2012/Annex II_2.2.2_02.

⁷ Technical dossier/Section II/Annex II 2.1.3/01 to 06.

⁸ Technical dossier/Section II/Annex II 2.1.3/07.

⁹ COMMISSION REGULATION (EU) No 231/2012 of 9 March 2012 laying down specifications for food additives listed in Annexes II and III to Regulation (EC) No 1333/2008 of the European Parliament and of the Council. OJ No L 83/1, 22.3.2012, p. 1.

The impurities analysed in 11 batches of the additive (sulfated ash, phenolic impurities)¹⁰ or seven batches (lead, arsenic, mercury)¹¹ showed concentrations in compliance with the specifications for the food additive (sulfated ash < 0.005%, phenolic impurities < 0.5%, lead < 2 mg/kg, mercury < 1 mg/kg, arsenic < 3 mg/kg); in the same seven batches, cadmium was measured to be < 0.5 mg/kg.

The particle size distribution of the additive was measured by laser diffraction on one¹² and two batches¹³ of the additive from the two manufacturers, respectively. In the first sample of BHT,

In the other two samples,

The dusting potential of the additive was measured in triplicate in one sample,¹⁴ using the rotating drum method in accordance with UNI EN 15051 standard. The results showed an average concentration of inhalable fraction of of thoracic fraction of and of respirable fraction of All these three values are classified as high.

3.1.2. Stability and homogeneity

¹⁴

¹⁵

¹⁶

¹⁷

3.1.3. Conditions of use

BHT (E 321) is intended to be used as an antioxidant in feedingstuffs for all animal species and categories except dogs with a maximum content of 150 mg/kg complete feed (alone or together with BHA (E 320) and/or ethoxyquin (E 324)) and for dogs with a maximum content of 150 mg/kg complete feed (alone or together with BHA (E 320)).

3.2. Safety

3.2.1. Safety for the target species

To support the safety of the additive for the target species, the applicant provided two tolerance studies, one with chickens for fattening and one with weaned piglets, assessed below. In addition, the applicant provided studies published in the scientific literature (eleven publications)¹⁸ in which the dietary supplementation of BHT at various inclusion levels was studied on different physiological parameters of various animal species (chickens for fattening/rearing, laying hens, turkeys for fattening, pigs for fattening, quail, dogs, cats, rabbits, guinea pigs, rats, mice and Atlantic salmon). None of the 12 studies were further considered in the assessment as they contained many experimental drawbacks

¹⁰ Technical dossier/Section II/Annex II 2.1.3/01 to 07.

¹¹ Technical dossier/Section II/Annex II_2.1.3/01 to 06 and Supplementary Information December 2012/Annex_2.1.4_08_2.

¹² Technical dossier/Section II/Annex II_2.2.2_03.

¹³ Supplementary Information December 2012/Annex II_2.2.2_04_2.

¹⁴ Supplementary Information December 2012/Annex II_2.4.1.1_05_2 and Annex II_2.4.1.1_07_2.

¹⁵ Technical dossier/Annex II_2.4.1.1_04 and Supplementary Information December 2012/Annex II_2.4.1.1_05_2.

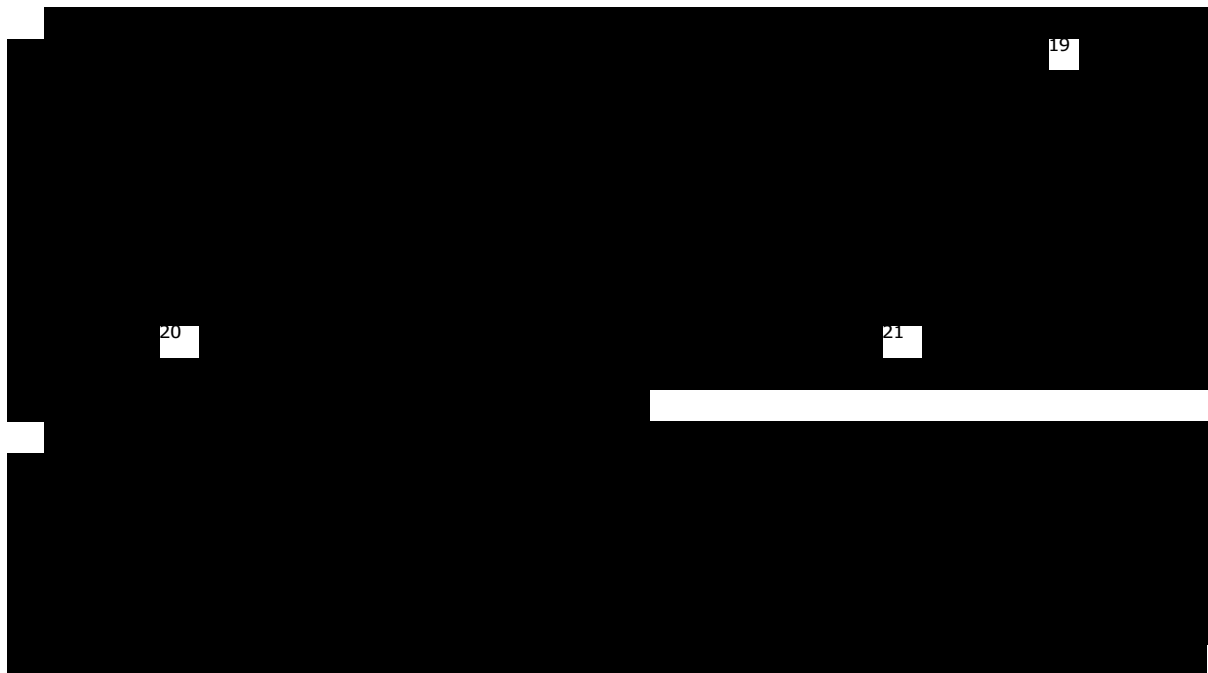
¹⁶ Supplementary Information December 2012/Annex_2.4.1.1_06_2.

¹⁷ Supplementary Information December 2012/Annex_2.4.2_01_2.

¹⁸ Supplementary Information December 2012/Annex II_3.1.1_01 to Annex II_3.1.1_11.

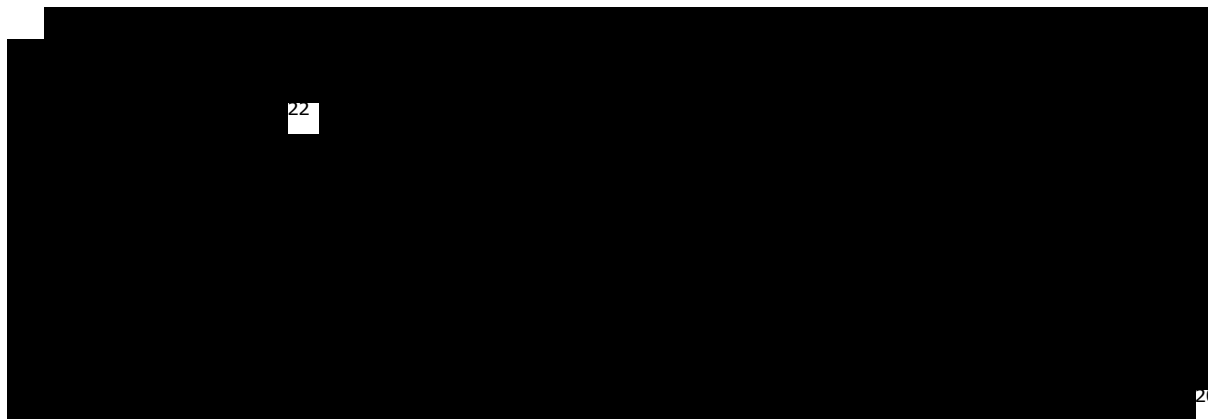
and reporting flaws (e.g. lack of control and multi-fold treatment groups, lack of replicates, insufficient number of animals used, short duration).

3.2.1.1. Safety for chickens for fattening



The BHT supplementation up to 10-fold the maximum recommended level of 150 mg/kg feed did not adversely affect the health and performance of the chickens. Therefore, the FEEDAP Panel concludes that the product is safe for chickens for fattening at the maximum recommended use level.

3.2.1.2. Safety for weaned piglets



¹⁹ Technical dossier/Supplementary information February 2014/Annex IIA_3.1.1_12.

²⁰ Haematology: red blood cell count (RBC), haemoglobin, haematocrit, mean corpuscular volume (MCV), mean corpuscular haemoglobin (MCH), mean corpuscular haemoglobin concentration (MCHC), white blood cell count (WBC), lymphocytes, monocytes, neutrophils, eosinophils, basophils, platelets, reticulocyte count, reticulocyte production index (RPI), mean platelet volume (MPV), platelet crit (PCT), platelet distribution width (PDW). Biochemistry: glucose, calcium, inorganic P, cholesterol, triglycerides, phospholipids, uric acid, urea, creatinine, lactate dehydrogenase, alkaline phosphatase, aspartate transaminase (GOT), alanine transaminase (GPT), total bilirubin, gamma-glutamyl transpeptidase (GGT), haptoglobin, serum albumin, serum total protein, blood clotting: quick/INR (International Normalized Ratio) value, prothrombin time (PT), thyroid hormones (TSH-thyroid stimulating hormone, T3-triiodothyronine, T4-thyroxine).

²¹ Skin, eyes, feet, ears, head and tail, mouth and anus, gut – oral cavity, oesophagus, stomach, upper, mid and lower small intestine, caecum and colon, pancreas, spleen liver/gall bladder, kidneys, genitals, abdominal fat, omentum, heart and lungs, skeletal muscle and fat.

²² Technical dossier/Supplementary information February 2014/Annex IIA_3.1.1_13 Tolerance piglets.

[REDACTED]

The BHT supplementation up to 10-fold the maximum inclusion level of 150 mg/kg feed did not adversely affect the health and performance of weaned piglets. Therefore, the FEEDAP Panel concludes that the product is safe for weaned piglets at the maximum inclusion level.

3.2.1.3. Conclusions on safety for the target species

The FEEDAP Panel concludes that BHT is safe for chickens for fattening and weaned piglets at the maximum intended concentration of 150 mg/kg complete feed. This conclusion is extended to chickens reared for laying and to pigs for fattening and extrapolated to all growing avian species. In the absence of data, no conclusion on the safety for the other target species could be drawn.

3.2.2. Safety for the consumer

For the current assessment the applicant referred to the re-evaluation of butylated hydroxytoluene BHT (E 321) as a food additive (EFSA ANS Panel, 2012), the relevant studies at the basis of these evaluations, absorption, distribution, metabolism and excretion studies in laying hens and mini pigs and residue studies in milk, edible tissues of mini pigs, of laying hens and in eggs.

The FEEDAP Panel noted that other evaluations on the safety of BHT were performed for uses other than in feed by the SCF (European Commission, 1989) and JECFA (latest, WHO, 1996)) before the submission of the dossier. Since 2016, the ANSES (2016) is evaluating BHT for its endocrine-disrupting potential. The safety of BHT was evaluated also by the VKM (2019) and the SCCS (2021).

The FEEDAP Panel re-evaluated the main results of the studies assessed in these previous evaluations and assessed the studies done by the applicant for the current application.

3.2.2.1. Absorption, distribution, metabolism, excretion (ADME) and residues

3.2.2.1.1. ADME in laboratory animals

In the opinions of the EFSA ANS Panel (2012) and more recently of the SCCS (2021), the ADME of BHT in laboratory animals (mice, rats, rabbits, dogs, monkeys) has been reviewed. It can be summarised as follows: (i) after oral exposure BHT is highly bioavailable, with 30–40% urinary excretion and significant enterohepatic recirculation; BHT is generally distributed to and metabolised by the liver and is distributed to body fat, (ii) more than 40 metabolites have been separated/identified; the main primary metabolic pathway leads to the production of BHT alcohol, BHT aldehyde and BHT acid by stepwise oxidation of the *p*-methyl group in the rat and rabbit; these metabolites are conjugated (glucuronide, acetylcysteine and sulfate) and cleared; a BHT dimer is formed also, (iii) an unstable quinone methide metabolite is formed in all species via oxidation mechanisms.

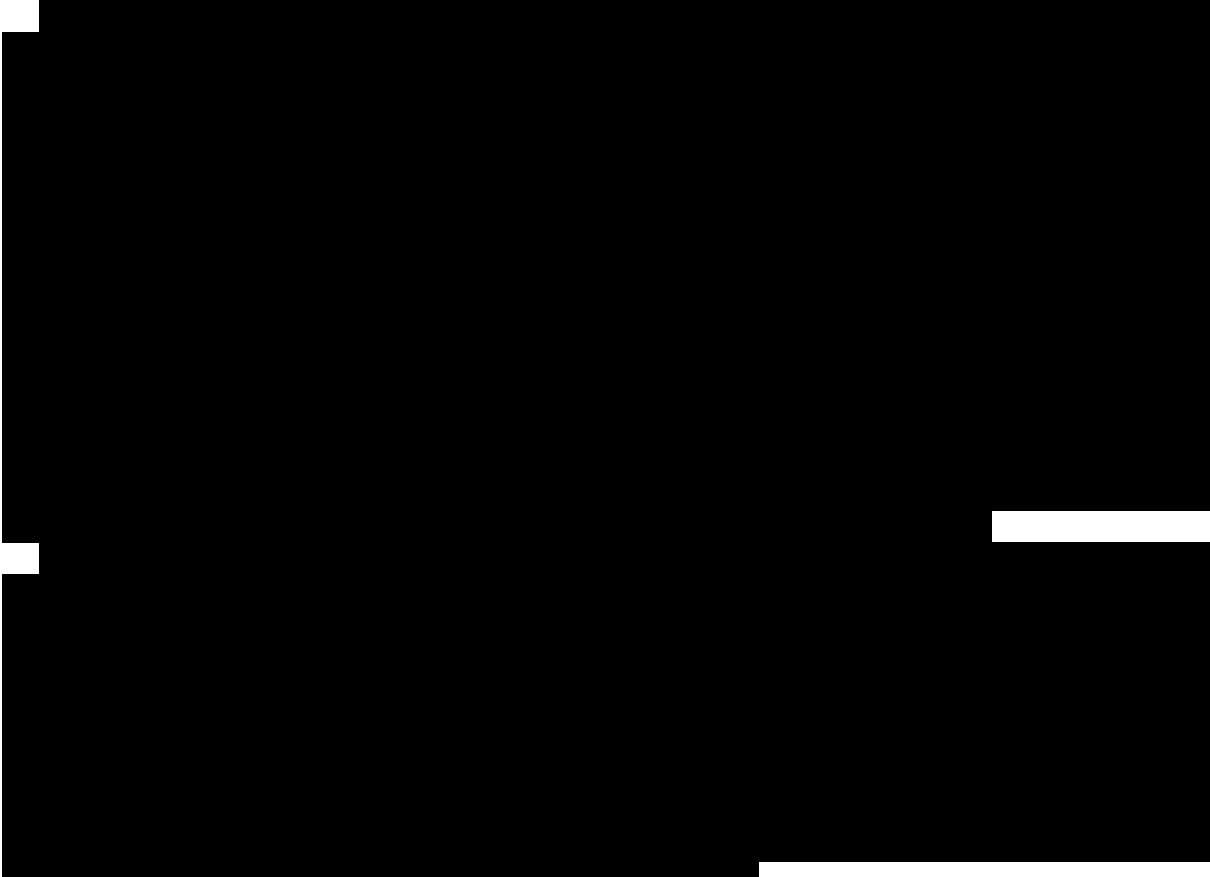
3.2.2.1.2. ADME in target species

In the current application, two studies on the ADME of BHT in the target species were submitted.


A study performed in laying hen²³ comprised two trials. The first one was designed to establish the duration of the exposure to BHT required to reach BHT residue steady state in the eggs.

[REDACTED]

²³ Supplementary Information April 2019/Annex_II_3.2_09_8th_Add_Sub_April_2019.



To study the metabolism in pig species, the applicant conducted a study using mini pig, which were chosen to allow a proper use of radiolabelled test substance, considering the lower bodyweight compared to pigs for fattening.²⁴ Considering the substantial metabolic similarity between the two breeds, the FEEDAP Panel considered this approach as acceptable.



3.2.2.1.3. *Conclusions on ADME*

The commonality of the metabolic pathways of BHT in the laboratory animals and target species for which ADME studies are available is established. BHT is considered as the marker residue and liver is the target tissue.

²⁴ Supplementary Information April 2019/Annex_II_3.2_10_8th_Add_Sub_April_2019.

3.2.2.2. Residue studies

Three studies analysing BHT residues' concentration in milk, in eggs and edible tissues of laying hens and in edible tissues of mini pigs were made available.²⁵

3.2.2.2.1. BHT residues in milk

A residue study of BHT in milk was performed in eight Holstein cows

[Redacted text block]

BHT in milk of cows exposed to BHT [Redacted] to be considered for consumer exposure assessment are < 0.012 mg/kg.

In a published survey study (Pattono et al., 2009), samples of cow milk were collected at farm level (organic and conventional dairy farms) and retail market; BHT residues were determined using a GC–MS method with a LOQ of 1 µg/L. Residues of BHT were found in ten samples of conventional milk and in eleven samples of organic milk (sampled either at farm level or at retail level). Since no information was available on the BHT content of the cow diets related either to the contribution of the additive as antioxidant components of the diet or to contaminations, the results of this study cannot be used to estimate consumer exposure under the proposed conditions of use of the additive.

3.2.2.2.2. BHT residues in laying hen edible tissues and egg

The ADME study of BHT in the laying hen already described (see Section 3.2.2.1.2) included the analysis of residues in the tissues and eggs. Data on total radioactive residues in tissues and eggs are reported in Table 1.

[Redacted text block]

[Redacted text block]

[Redacted]	[Redacted]	[Redacted]	[Redacted]	[Redacted]	[Redacted]
[Redacted]	[Redacted]	[Redacted]	[Redacted]	[Redacted]	[Redacted]
[Redacted]	[Redacted]	[Redacted]	[Redacted]	[Redacted]	[Redacted]
[Redacted]	[Redacted]	[Redacted]	[Redacted]	[Redacted]	[Redacted]

[Redacted text block]

3.2.2.2.3. BHT residues in mini pig edible tissues

The ADME study of BHT in the mini pig already described (see Section 3.2.2.1.2) included the analysis of residues in the tissues. Data on total radioactive residues in tissues are reported in Table 2.

²⁵ The methods of analysis for BHT residues in milk, in eggs and in edible tissues of laying hens were evaluated for their quality by the EURL. The methods of analysis were considered fit for purpose for the analysis of BHT residues in the matrixes and at the concentrations considered in these studies.

²⁶ The method was validated in milk with recovery tests at 0.012, 0.6, 1.6 and 12 mg BHT/kg spiking levels. A BHT reference standard was used for both calibration and spiking of the samples. The limit of detection (LOD), set at the lowest concentration having a signal-to-noise signal of 3 as minimum, amounted to 0.005 mg/kg. The limit of quantification (LOQ) was 0.012 mg/kg, based on the lowest spiking level at which both accuracy and precision were adequate (recovery 111 ± 3%).

[REDACTED]

[REDACTED]

[REDACTED]	[REDACTED]	[REDACTED]	[REDACTED]	[REDACTED]	[REDACTED]
[REDACTED]	[REDACTED]	[REDACTED]	[REDACTED]	[REDACTED]	[REDACTED]
[REDACTED]	[REDACTED]	[REDACTED]	[REDACTED]	[REDACTED]	[REDACTED]
[REDACTED]	[REDACTED]	[REDACTED]	[REDACTED]	[REDACTED]	[REDACTED]

[REDACTED]

3.2.2.3. Toxicological studies

BHT was evaluated by the SCF in 1989 (European Commission, 1989) and by JECFA in 1996 (WHO, 1996). The SCF established an acceptable daily intake (ADI) of 0–0.05 mg/kg bw per day based on thyroid, reproduction and haematological effects in the rat. At its last evaluation JECFA allocated an ADI of 0–0.3 mg/kg bw for BHT, based on effects in the reproduction segments and hepatic enzyme induction seen in two separate two-generation studies in rats. Noting the discrepancy between the SCF and JECFA evaluations, the ANS Panel reviewed the toxicology of BHT (EFSA ANS Panel, 2012), considering the studies that had become available since the last review. In the ANS Panel opinion, studies on acute toxicity in mice rats, rabbits, guinea pigs and cats were assessed, in addition to repeated-dose toxicity studies in mice, rats and dogs, chronic toxicity/carcinogenicity studies in mice and rats, various mutagenicity studies, reproduction/developmental toxicity studies in mice, rats and monkeys, special studies of thyroid effects in rats, case reports and epidemiological studies in humans and numerous studies of the mechanism of action. The main outcomes of the ANS Panel assessment are summarised below.

The acute oral toxicity of BHT was low in all species tested. The results of repeated-dose studies showed that short-term or subchronic exposure to BHT can cause histopathological changes in the liver of mice and rats. In addition, BHT has been shown to increase the relative thyroid and adrenal weight in rats and thyroid hyperactivity in chronic studies. A no observed adverse effect level (NOAEL) of 25 mg/kg bw per day was identified for histopathological changes in the thyroid, based on electron microscopy analysis. Lung or liver tumours were seen in some studies in mice or rats exposed orally to BHT as the single test substance, and there was some evidence that BHT could promote lung cancers induced in mice by other agents. Benchmark dose (BMD) analyses of the data on the incidence of lung neoplasia in mice induced by BHT revealed a BMDL₁₀ of 38 mg/kg bw per day, and a BMDL₁₀ of 247 mg/kg bw per day on the incidence of hepatocellular carcinomas in male rats induced by BHT.

The ANS Panel noted that the majority of the genotoxicity studies were negative for the induction of point mutations and chromosomal aberrations and for the interaction with DNA. The Panel recognised that positive results reported in some *in vitro* genotoxicity studies with BHT and BHT metabolites can be attributed to pro-oxidative chemistry giving rise to formation of quinones and reactive oxygen species and that such a mechanism of genotoxicity is generally considered to have a threshold.

The ANS Panel also noted that BHT and, to a larger extent, its metabolite 6-*t*-butyl-2-(hydroxybutyl) 4-methylphenol were found to inhibit gap junctional intercellular communication (GJIC) in mouse lung epithelial (C10) and rat liver epithelial (WB-F344) cell lines and concluded that BHT at high doses can exert tumour-promoting effects in some animal models. In conclusion, the tumorigenic activity of BHT observed in long-term studies is attributed to non-genotoxic thresholded mechanisms.

No overt effects on reproduction were reported in mice or rhesus monkeys. The lowest NOAEL identified in any of the reproduction studies was 25 mg/kg bw per day for effects on litter size, sex ratio and pup body weight gain during the lactation period of the reproduction segment of a rat study that also considered carcinogenicity. Human studies, including an epidemiological investigation of risk of stomach cancer, revealed no areas for concern over the safety of BHT.

The ANS Panel set an ADI of 0.25 mg/kg bw applying an uncertainty factor of 100 to the NOAEL of 25 mg BHT/kg bw per day, which was derived from the results from the reproduction segment of a study in rats (effects on litter size, sex ratio, and pup body weight gain during the lactation period), and to the same NOAEL for thyroid effects seen in a study in rats where electron microscopy analysis of the thyroid glands of rats exposed to 500 mg BHT/kg bw per day for 28 days showed an increase in the number of follicle cells.

After the EFSA ANS Panel (2012), an *in vivo* study (Pop et al., 2013) investigated the possible endocrine-disrupting (ED) activity of BHT using the immature rat uterotrophic assay. Wistar female rats aging 17–21 days were orally administered with BHT at 75 mg/kg bw (i.e. three times the calculated NOAEL) for three consecutive days. The absolute and relative decrease in uterus weight pointed to an anti-oestrogenic activity of BHT.

In a subsequent document concerning the analysis of the most appropriate Risk Management Option (RMOA), ANSES (2016) examined the full data set of toxicological effects of BHT. As regards the possible ED activity, ANSES highlighted the need to further evaluate the adrenal and thyroid effects and to get more insight into the interaction with androgenic and estrogenic receptors reported *in vitro*. Based on the available data, ANSES was not in the position to conclude on the ED activity of BHT. Overall, also due to other uncertainties on the tumorigenic effects and the reported negative effects on reproduction, ANSES proposed BHT as a candidate for the REACH evaluation process.

An assessment was performed in 2019 by the Panel on Food Additives, Flavourings, Processing Aids, Materials in Contact with Food, and Cosmetics of the Norwegian Scientific Committee for Food and Environment (VKM). In this evaluation, as regards the Pop et al. (2013) study, the endpoint «uterus weight in rats» was considered to be relevant for an assessment of potential risks in humans. According to the evaluation of the weight of evidence, however, an association between BHT and the reported anti-oestrogenic effect was considered unlikely, and the study was not used for the hazard identification and characterisation. No further original studies since the EFSA ANS Panel (2012) evaluation were retrieved. Consequently, the VKM did not see any reason to modify the ADI of 0.25 mg/kg bw per day established by the EFSA ANS Panel in 2012.

The Scientific Committee on Consumer Safety (SCCS) has recently issued an opinion on BHT (2021) as to its use as a cosmetic ingredient. No activity toward oestrogen, androgen or thyroid receptors alpha- or beta could be demonstrated *in silico* through the VEGA QSAR programme. The SCCS opinion also reported on the results of the *in vitro* US EPA ToxCast Endocrine Screening Program. The test assesses the agonism/antagonism toward androgen or oestrogen receptors, or endpoints related to thyroid function or oestrogen synthesis (aromatase). In all tests BHT was either inactive or active only at cytotoxic concentrations. Based on the evaluation of four *in vitro* studies (Wada et al., 2004; Pop et al., 2016, 2018; Yang et al., 2018) not covered by previous risk assessments, the SCCS concluded that BHT may behave as either weak oestrogen or anti-oestrogen according to the cell system used. Finally, SCCS attributed the observed histological signs of thyroid hyperactivity reported in previous evaluations to the increase in the activity of liver enzymes participating in thyroid hormone catabolism and agreed on the ADI 0.25 mg/kg bw established by the EFSA ANS Panel in 2012.

The FEEDAP Panel, having reviewed the studies and evaluations above, supports the conclusions reached by the EFSA ANS Panel in 2012 and considered the ADI of 0.25 mg/kg bw as adequate and used this ADI as the basis of its assessment of the consumer safety of the use of BHT in animal feeds.

3.2.2.4. Assessment of Consumer exposure and Consumer safety assessment

In its estimate of consumer exposure to BHT, the ANS Panel (2012) could not take into account the contribution of food of animal origin resulting from the use of BHT as a feed additive due to lack of data. The ANS Panel noted that 'exposure of adults to BHT from its use as food additive is unlikely to exceed the newly derived ADI of 0.25 mg/kg bw/day at the mean and for the high consumers (95th percentile). Exposure of children to BHT from its use as food additive is also unlikely to exceed this ADI at the mean, but is exceeded for some European countries (Finland, The Netherlands) at the 95th percentile. If exposure to BHT from its use as food contact material is also taken into account, the new ADI would be exceeded by children at the mean and at the 95th percentile.'

In the current assessment, the FEEDAP Panel performed an exposure assessment following the methodology described in the Guidance on the assessment of the safety of feed additives for the consumer (EFSA FEEDAP Panel, 2017a) (Appendix A), using the residue data in milk from dairy cows, eggs and edible tissues from laying hens and edible tissues from mini pigs described in the residue

section (see Section 3.2.2.2). The FEEDAP Panel notes that, in the absence of residue data in fish, the exposure calculated refers only to the consumption of tissues and products from terrestrial animals.

Comparing mini pigs with standard pigs for fattening, mini pigs can be characterised by a lower body weight gain (if at all under study conditions) and by a higher body fat proportion. The intake of feed per body weight gain unit is higher than in pigs for fattening. The residues measured in mini pigs could be therefore taken as a conservative estimate of residues expected in pigs for fattening after oral exposure to 150 mg BHT/kg complete feed.

The BHT exposure was calculated on the basis of the highest reliable percentile (HRP) of food consumption (raw agricultural food commodities), expressed in mg/kg bw per day for the different population categories and compared with the ADI established by the EFSA ANS Panel in 2012 (EFSA ANS Panel, 2012). The input data of BHT TRR content used to estimate exposure are reported in Table 3.

Table 3: Input data on BHT content in food of animal origin used for the consumer exposure assessment

Animal product	BHT (mg/kg wet tissue per product)
Birds fat tissue	2.513
Birds liver	2.794
Birds meat ⁽¹⁾	0.404
Birds offals and slaughtering products (other than liver) ⁽²⁾	1.030
Mammals fat tissue	0.363
Mammals liver	0.896
Mammals meat ⁽³⁾	0.112
Mammals offals and slaughtering products (other than liver) ⁽²⁾	0.776
Milk	0.012
Whole eggs	0.868

(1): Calculated by default as 90% muscles and 10% fat tissue.

(2): Kidney values taken by default.

(3): Calculated by default as 80% muscles and 20% fat tissue.

The results of the dietary exposure to BHT for the different population categories are reported in Table 4.

Table 4: Chronic human dietary exposure to BHT. Maximum highest reliable percentile expressed in mg/kg bw per day

Population class	Number of surveys	Maximum highest reliable percentile	% ADI*
Infants	6	0.0061	2
Toddlers	10	0.0068	3
Other children	18	0.0060	2
Adolescents	17	0.0037	1
Adults	17	0.0028	1
Elderly	14	0.0026	1
Very elderly	12	0.0023	1

*: ADI: acceptable daily intake: 0.25 mg/kg body weight and day.

The exposure of the consumer to BHT from products of terrestrial animals fed the additive ranged from 1% to 3.0% of the ADI. The population class with the highest exposure was toddlers with an intake amounting to about 3% of the ADI, exposure of the population classes adults, elderly and very elderly ranged around 1% of the ADI.

In this context, it is noted that the exposure of adult consumers to BHT from its use as a food additive amounts to 0.01–0.03 mg/kg bw per day (mean) and 0.03–0.17 mg/kg bw per day (95th percentile) and from its use as a food contact material to 0.05 mg/kg bw per day (EFSA ANS Panel, 2012). Exposure of children to BHT from its use as a food additive amounts to 0.01–0.09 mg/kg bw per day (mean) and 0.05–0.30 mg/kg bw per day (95th percentile) and from its use as a food contact material to 0.2 mg/kg bw per day.

3.2.2.5. Conclusions on safety for the consumer

The FEEDAP Panel concluded that the exposure of the consumer to BHT from its use as a feed additive in terrestrial animals is of no concern for the safety of consumers.

3.2.3. Safety for the user

3.2.3.1. Effects on the respiratory system

No data were provided on the effects of the additive on the respiratory system, including inhalation toxicity. Considering the particle size distribution of the additive and its dusting potential, exposure of the user via inhalation is likely.

3.2.3.2. Effects on the eyes and skin

The effects of BHT on skin and eyes were summarised in the Organisation for Economic Co-operation and Development (OECD) Screening Information Dataset (SIDS) (OECD, 2002). BHT was reported to be slightly irritating to the skin of rabbits. The irritating effects observed were mild and reversible within 72 h. BHT was also slightly irritating to the eye of rabbits. The irritating effects observed were mild and completely reversible within 72 h. No information was provided on skin sensitising potential.

3.2.3.3. Conclusions on the safety for the user

The FEEDAP Panel concludes that exposure of the user to BHT via inhalation is likely; however, the Panel is not in the position to conclude on the potential inhalation toxicity of the additive. BHT is a skin and eye irritant, no conclusions can be drawn on the potential of the additive to be a skin or respiratory sensitiser.

3.2.4. Safety for the environment

The active substance BHT is not a physiological/natural substance of established safety for the environment. Consequently, the Phase I assessment has to be continued to determine the predicted environmental concentration (PEC).

In Phase I, a total residues approach was used meaning that the predicted environmental concentrations were calculated based on the assumption that the additive is excreted 100% as parent compound.

3.2.4.1. Phase I

The values used to perform an estimation of BHT in the environment, assuming 150 mg/kg concentration of the additive in feed, are described in Table 5.

The Phase I assessment results in a predicted environmental concentration in soil (PEC_{soil}) ranging from 700 to 3,200 µg/kg depending on the species considered; and a predicted environmental concentration in groundwater (PEC_{GW}) in the range of 3–5 µg/L.

The Phase I PEC trigger values are exceeded both for soil and for groundwater. Therefore, a Phase II assessment is considered necessary.

Table 5: BHT characteristics

Parameters	Value
Vapour pressure	1.1 Pa*
Molar Mass	220.36 g/mol
Water solubility	0.6 mg/L*
Organic carbon normalised partition coefficient (K _{oc}):	8,183 dm ³ /kg**

*: From OECD (2002).

** : EPI Suite calculation.

3.2.4.2. Phase II

No experimental data were provided by the applicant neither for the exposure assessment nor for ecotoxicological assessment.

In the absence of any experimental data, the FEEDAP Panel cannot conclude on the safety of BHT for the environment.

3.3. Efficacy

BHT is authorised to be added to foods matrixes on a fat basis with the function of antioxidant at concentrations of 40–400 mg/kg. The food categories in which its use is authorised cover a wide range of moisture content. Since the same effect can be reasonably assumed for feedingstuffs, no studies are required to demonstrate the efficacy of BHT as antioxidant in feedingstuffs for all animal species.

The effects of the additive on egg quality were studied by Hayat et al. (2009). Groups of ISA Brown Leghorn laying hens (24-week-old at start), six replicates of 2 hens each, received a diet containing 10% flaxseeds either without BHT or supplemented with 50, 100 and 150 mg BHT/kg complete feed for 56 days. Twelve eggs per treatment (2 per replicate cage) were selected every 2 weeks to determine egg quality characteristics in yolk, albumen, and eggshell (yolk weight, shell weight, albumen weight and height, Haugh units, yolk colour and shell thickness) and lipid composition of eggs. Since none of the measured parameters was negatively affected it can be concluded that dietary BHT supplementation at levels up to 150 mg/kg feed had no adverse effects on egg quality.

4. Conclusions

The additive BHT is considered safe for chickens for fattening and weaned piglets at the maximum proposed concentration of 150 mg/kg complete feed. This conclusion is extended to chickens reared for laying and extrapolated to pigs for fattening. In the absence of data, no conclusion on the safety for the other target species could be drawn.

The exposure of the consumer to BHT from tissues and products of animals fed the additive ranged from 1% to 3% of the ADI. The FEEDAP Panel concluded that the use of BHT as a feed additive at the proposed conditions of use is of no concern for the safety of the consumers.

Exposure of the user to BHT via inhalation is likely, however the Panel is not in the position to conclude on the potential inhalation toxicity of the additive. BHT is a skin and eye irritant, no conclusions can be drawn on the potential of the additive to be a skin or respiratory sensitiser.

In the absence of data, the FEEDAP Panel cannot conclude on the safety of BHT for the environment.

The additive BHT is considered an efficacious antioxidant in feedingstuffs for all animal species.

5. Documentation provided to EFSA/Chronology

Date	Event
08/11/2011	Reception mandate from the European Commission
12/11/2010	Dossier received by EFSA. Butylated hydroxytoluene (BHT) for all animal species. Submitted by LANXESS Distribution GmbH.
28/03/2012	Application validated by EFSA – Start of the scientific assessment
29/03/2012	Request of supplementary information to the applicant in line with Article 8(1)(2) of Regulation (EC) No 1831/2003 – Scientific assessment suspended. <i>Issues: safety for the target species, characterisation</i>
20/04/2012	Reception of the Evaluation report of the European Union Reference Laboratory for Feed Additives
27/02/2014	Reception of supplementary information from the applicant - Scientific assessment re-started
06/06/2014	Request of supplementary information to the applicant in line with Article 8(1)(2) of Regulation (EC) No 1831/2003 – Scientific assessment suspended. <i>Issues: safety for the consumer</i>
08/01/2015	Reception of supplementary information from the applicant - Scientific assessment re-started
17/02/2015	Request of supplementary information to the applicant in line with Article 8(1)(2) of Regulation (EC) No 1831/2003 – Scientific assessment suspended. <i>Issues: safety for the consumer</i>
24/03/2015	Reception of supplementary information from the applicant - Scientific assessment re-started
03/06/2015	Request of supplementary information to the applicant in line with Article 8(1)(2) of Regulation (EC) No 1831/2003 – Scientific assessment suspended. <i>Issues: safety for the consumer</i>
19/08/2015	Reception of supplementary information from the applicant - Scientific assessment re-started
10/11/2015	Request of supplementary information to the applicant in line with Article 8(1)(2) of Regulation (EC) No 1831/2003 – Scientific assessment suspended. <i>Issues: safety for the consumer</i>

Date	Event
29/07/2016	Request of supplementary information to the applicant in line with Article 8(1)(2) of Regulation (EC) No 1831/2003 – Scientific assessment suspended. <i>Issues: safety for the consumer</i>
26/04/2019	Reception of supplementary information from the applicant - Scientific assessment on hold pending evaluation method of analysis for residues in tissues and products
21/09/2021	Reception of the evaluation of the methods of analysis - Scientific assessment re-started
23/03/2022	Opinion adopted by the FEEDAP Panel. End of the Scientific assessment

References

- ANSES, 2016. Analysis of the most appropriate risk management option (RMOA). EC no 204–881-4.
- EFSA ANS Panel (EFSA Panel on Food Additives and Nutrient Sources added to Food), 2012. Scientific Opinion on the re-evaluation of Butylated hydroxytoluene BHT (E 321) as a food additive. EFSA Journal 2012;10(3):2588, 43 pp. <https://doi.org/10.2903/j.efsa.2012.2588>. Available online: www.efsa.europa.eu/efsajournal.htm
- EFSA FEEDAP Panel (EFSA Panel on Additives and Products or Substances used in Animal Feed), 2012. Guidance on studies concerning the safety of use of the additive for users/workers. EFSA Journal 2012;10(1):2539, 5 pp. <https://doi.org/10.2903/j.efsa.2012.2539>
- EFSA FEEDAP Panel (EFSA Panel on Additives and Products or Substances used in Animal Feed), Rychen G, Aquilina G, Azimonti G, Bampidis V, Bastos ML, Bories G, Chesson A, Cocconcelli PS, Flachowsky G, Gropp J, Kolar B, Kouba M, López-Alonso M, López Puente S, Mantovani A, Mayo B, Ramos F, Saarela M, Villa RE, Wallace RJ, Wester P, Anguita M, Dujardin B, Galobart J and Innocenti ML, 2017a. Guidance on the assessment of the safety of feed additives for the consumer. EFSA Journal 2017;15(10):5022, 17 pp. <https://doi.org/10.2903/j.efsa.2017.5022>
- EFSA FEEDAP Panel (EFSA Panel on Additives and Products or Substances used in Animal Feed), Rychen G, Aquilina G, Azimonti G, Bampidis V, Bastos ML, Bories G, Chesson A, Cocconcelli PS, Flachowsky G, Gropp J, Kolar B, Kouba M, López-Alonso M, López Puente S, Mantovani A, Mayo B, Ramos F, Saarela M, Villa RE, Wallace RJ, Wester P, Anguita M, Galobart J and Innocenti ML, 2017b. Guidance on the identity, characterisation and conditions of use of feed additives. EFSA Journal 2017;15(10):5023, 12 pp. <https://doi.org/10.2903/j.efsa.2017.5023>
- EFSA FEEDAP Panel (EFSA Panel on Additives and Products or Substances used in Animal Feed), Rychen G, Aquilina G, Azimonti G, Bampidis V, Bastos ML, Bories G, Chesson A, Cocconcelli PS, Flachowsky G, Gropp J, Kolar B, Kouba M, López-Alonso M, López Puente S, Mantovani A, Mayo B, Ramos F, Saarela M, Villa RE, Wallace RJ, Wester P, Anguita M, Galobart J, Innocenti ML and Martino L, 2017c. Guidance on the assessment of the safety of feed additives for the target species. EFSA Journal 2017;15(10):5021, 19 pp. <https://doi.org/10.2903/j.efsa.2017.5021>
- EFSA FEEDAP Panel (EFSA Panel on Additives and Products or Substances used in Animal Feed), Rychen G, Aquilina G, Azimonti G, Bampidis V, Bastos ML, Bories G, Chesson A, Cocconcelli PS, Flachowsky G, Gropp J, Kolar B, Kouba M, López-Alonso M, López Puente S, Mantovani A, Mayo B, Ramos F, Saarela M, Villa RE, Wallace RJ, Wester P, Anguita M, Galobart J, Innocenti ML and Martino L, 2018. Guidance on the assessment of the efficacy of feed additives. EFSA Journal 2018;16(5):5274, 25 pp. <https://doi.org/10.2903/j.efsa.2018.5274>
- EFSA FEEDAP Panel (EFSA Panel on Additives and Products or Substances used in Animal Feed), Bampidis V, Bastos M, Christensen H, Dusemund B, Kouba M, Kos Durjava M, López-Alonso M, López Puente S, Marcon F, Mayo B, Pechová A, Petkova M, Ramos F, Sanz Y, Villa RE, Woutersen R, Brock T, de Knecht J, Kolar B, van Beelen P, Padovani L, Tarrés-Call J, Vettori M V and Azimonti G, 2019. Guidance on the assessment of the safety of feed additives for the environment. EFSA Journal 2019;17(4):5648, 78 pp. <https://doi.org/10.2903/j.efsa.2019.5648>
- European Commission, 1989. Scientific Committee for Food (SCF), Butylated hydroxytoluene. In: Reports of the Scientific Committee for Food (Twenty second series). Available online: https://ec.europa.eu/food/fs/sc/scf_reports/scf_reports_22.pdf
- OECD (Organisation for Economic Co-operation and Development), 2002. Screening Information Dataset (SIDS) Initial Assessment Report. 2,6-di-tert-butyl-p-cresol (BHT) CAS N°:128-37-0. <https://hvpchemicals.oecd.org/UI/handler.axd?id=6d30349e-ef9f-496c-a2af-6d497d4f1cca>
- Pattono D, Battaglini LM, Barberio A, De Castellid A, Valianie A, Variscof G, Scatassa ML, Davit P, Pazzi M and Civera T, 2009. Presence of synthetic antioxidants in organic and conventional milk. Food Chemistry, 115, 285–289.
- Pop A, Berce C, Bolfa P, Nagy A, Catoi C, Dumitrescu IB, Silaghi-Dumitrescu L and Loghin F, 2013. Evaluation of the possible endocrine disruptive effect of butylated hydroxyanisole, butylated hydroxytoluene and propylgallate in immature female rats. Farmacia, 61, 202–211.
- Pop A, Drugan T, Gutleb AC, Lupu D, Cherfan J, Loghin F and Kiss B, 2016. Individual and combined in vitro (anti) androgenic effects of certain food additives and cosmetic preservatives. Toxicology in Vitro, 32, 169–277. <https://doi.org/10.1016/j.tiv.2016.01.012>

- Pop A, Drugan T, Gutleb AC, Lupu D, Cherfan J, Loghin F and Kiss A, 2018. Estrogenic and anti-estrogenic activity of butylparaben, butylated hydroxyanisole, butylated hydroxytoluene and propyl gallate and their binary mixtures on two estrogen responsive cell lines (T47D-Kbluc, MCF-7). *Journal of Applied Toxicology*, 38, 944–957.
- SCCS (Scientific Committee on Consumer Safety), 2021. Scientific opinion on Butylated hydroxytoluene (BHT), preliminary version of 27 September 2021, final version of 2 December 2021, SCCS/1636/21.
- VKM, 2019. Risk assessment of butylated hydroxytoluene (BHT). Opinion of the Panel on Food Additives, Flavourings, Processing Aids, Materials in Contact with Food, and Cosmetics of the Norwegian Scientific Committee for Food and Environment, Norwegian Scientific Committee for Food and Environment (VKM). VKM report 2019:15 ISBN: 978-82-8259-331-1, ISSN: 2535-4019. Oslo, Norway.
- Wada H, Tarumi H, Imazato S NM and Ebisu S, 2004. *In vitro* estrogenicity of resin composite. *Journal of Dental Research*, 83, 222–226.
- WHO, 1996. Joint FAO/WHO Expert Committee on Food Additives (JECFA), 833, Butylated hydroxytoluene. Toxicological evaluation of certain food additives and contaminants in food. Prepared by the forty-fourth meeting of the Joint FAO/WHO Expert Committee on Food Additives (JECFA). WHO Food Additives Series 35. Available online: <https://www.inchem.org/documents/jecfa/jecmono/v35je02.htm>
- Yang X, Song W, Liu N, Sun Z, Liu R, Liu QS, Zhou Q and Jiang G, 2018. Synthetic phenolic antioxidants cause perturbation in steroidogenesis in vitro and in vivo. *Environmental Science and Technology*, 52, 850–858.

Abbreviations

ADI	acceptable daily intake
ADME	absorption, distribution, metabolism, excretion
ANS	EFSA Scientific Panel on Additives and Nutrient Sources added to Food
ANSES	Agence nationale de sécurité sanitaire de l'alimentation, de l'environnement et du travail
BHT	butylated hydroxytoluene
BMD	benchmark dose
bw	body weight
CAS	Chemical Abstracts Service
CV	coefficient of variation
DAD	diode-array detection
ECHA	European Chemicals Agency
ED	endocrine-disrupting
EINECS	European Inventory of Existing Chemical Substances
EMA	European Medicines Agency
EURL	European Union Reference Laboratory
FAO	Food Agricultural Organization
FD	fluorescence detection
FEEDAP	EFSA Scientific Panel on Additives and Products or Substances used in Animal Feed
FID	flame ionization detection
GC–MS	gas chromatography–mass spectrometry
GJIC	gap junctional intercellular communication
HPLC	high-performance liquid chromatography
IUPAC	International Union of Pure and Applied Chemistry
JECFA	The Joint FAO/WHO Expert Committee on Food Additives
LOD	limit of detection
LOQ	limit of quantification
MCHC	mean corpuscular haemoglobin concentration
MCV	mean corpuscular volume
MIC	minimum inhibitory concentration
MRL	maximum residue limit
MW	molecular weight
NOAEL	no observed adverse effect level
NTP	National Toxicology Program
OECD	Organisation for Economic Co-operation and Development
PEC	predicted environmental concentration
PEC _{soil}	predicted environmental concentration in soil
PEC _{GW}	predicted environmental concentration in groundwater
RRec	recovery rate

RSDip	standard deviation for intermediate precision
RSDr	standard deviation for repeatability
SCCS	Scientific Committee on Consumer Safety
SCF	Scientific Committee on Food
TRR	total radioactive residue
UV	Ultraviolet
VKM	Norwegian Scientific Committee for Food and Environment
WHO	World Health Organization

Appendix A – Detailed results of chronic exposure calculation

Table A.1: Chronic dietary exposure of consumers to residues of BHT per population class, country and survey (mg/kg body weight per day) based on residue data

Population class	Survey's country	Number of subjects	Highest reliable percentile value	Highest reliable percentile description
Infants	Bulgaria	523	0.00612	95th
Infants	Germany	142	0.00204	95th
Infants	Denmark	799	0.00270	95th
Infants	Finland	427	0.00159	95th
Infants	Italy	9	0.00077	50th
Infants	United Kingdom	1,251	0.00307	95th
Toddlers	Belgium	36	0.00387	90th
Toddlers	Bulgaria	428	0.00683	95th
Toddlers	Germany	348	0.00399	95th
Toddlers	Denmark	917	0.00357	95th
Toddlers	Spain	17	0.00518	75th
Toddlers	Finland	500	0.00338	95th
Toddlers	Italy	36	0.00363	90th
Toddlers	Netherlands	322	0.00425	95th
Toddlers	United Kingdom	1,314	0.00431	95th
Toddlers	United Kingdom	185	0.00392	95th
Other children	Austria	128	0.00393	95th
Other children	Belgium	625	0.00419	95th
Other children	Bulgaria	433	0.00595	95th
Other children	Germany	293	0.00365	95th
Other children	Germany	835	0.00340	95th
Other children	Denmark	298	0.00312	95th
Other children	Spain	399	0.00444	95th
Other children	Spain	156	0.00598	95th
Other children	Finland	750	0.00383	95th
Other children	France	482	0.00419	95th
Other children	Greece	838	0.00453	95th
Other children	Italy	193	0.00406	95th
Other children	Latvia	187	0.00342	95th
Other children	Netherlands	957	0.00357	95th
Other children	Netherlands	447	0.00323	95th
Other children	Sweden	1,473	0.00327	95th
Other children	Czechia	389	0.00506	95th
Other children	United Kingdom	651	0.00336	95th
Adolescents	Austria	237	0.00263	95th
Adolescents	Belgium	576	0.00173	95th
Adolescents	Cyprus	303	0.00164	95th
Adolescents	Germany	393	0.00264	95th
Adolescents	Germany	1,011	0.00164	95th
Adolescents	Denmark	377	0.00168	95th
Adolescents	Spain	651	0.00282	95th
Adolescents	Spain	209	0.00369	95th
Adolescents	Spain	86	0.00227	95th
Adolescents	Finland	306	0.00172	95th
Adolescents	France	973	0.00245	95th

Population class	Survey's country	Number of subjects	Highest reliable percentile value	Highest reliable percentile description
Adolescents	Italy	247	0.00231	95th
Adolescents	Latvia	453	0.00260	95th
Adolescents	Netherlands	1,142	0.00231	95th
Adolescents	Sweden	1,018	0.00201	95th
Adolescents	Czechia	298	0.00336	95th
Adolescents	United Kingdom	666	0.00190	95th
Adults	Austria	308	0.00186	95th
Adults	Belgium	1,292	0.00156	95th
Adults	Germany	10,419	0.00160	95th
Adults	Denmark	1,739	0.00126	95th
Adults	Spain	981	0.00214	95th
Adults	Spain	410	0.00200	95th
Adults	Finland	1,295	0.00182	95th
Adults	France	2,276	0.00174	95th
Adults	Hungary	1,074	0.00254	95th
Adults	Ireland	1,274	0.00175	95th
Adults	Italy	2,313	0.00159	95th
Adults	Latvia	1,271	0.00208	95th
Adults	Netherlands	2,055	0.00176	95th
Adults	Romania	1,254	0.00278	95th
Adults	Sweden	1,430	0.00206	95th
Adults	Czechia	1,666	0.00218	95th
Adults	United Kingdom	1,265	0.00146	95th
Elderly	Austria	67	0.00186	95th
Elderly	Belgium	511	0.00140	95th
Elderly	Germany	2,006	0.00147	95th
Elderly	Denmark	274	0.00130	95th
Elderly	Finland	413	0.00146	95th
Elderly	France	264	0.00160	95th
Elderly	Hungary	206	0.00207	95th
Elderly	Ireland	149	0.00169	95th
Elderly	Italy	289	0.00135	95th
Elderly	Netherlands	173	0.00142	95th
Elderly	Netherlands	289	0.00143	95th
Elderly	Romania	83	0.00259	95th
Elderly	Sweden	295	0.00191	95th
Elderly	United Kingdom	166	0.00134	95th
Very elderly	Austria	25	0.00106	75th
Very elderly	Belgium	704	0.00150	95th
Very elderly	Germany	490	0.00145	95th
Very elderly	Denmark	12	0.00099	75th
Very elderly	France	84	0.00157	95th
Very elderly	Hungary	80	0.00209	95th
Very elderly	Ireland	77	0.00180	95th
Very elderly	Italy	228	0.00129	95th
Very elderly	Netherlands	450	0.00133	95th
Very elderly	Romania	45	0.00225	90th
Very elderly	Sweden	72	0.00205	95th
Very elderly	United Kingdom	139	0.00127	95th

BHT: butylated hydroxytoluene.

Annex A – Executive Summary of the Evaluation Report of the European Union Reference Laboratory for Feed Additives on the Method(s) of the Analysis for butylated hydroxytoluene (BHT)

In the current applications authorisation is sought for Butylated hydroxytoluene, E321 (BHT) under Article 10, category/functional group 1(b) 'technological additives'/ 'antioxidants', according to the classification system of Annex I of Regulation (EC) No 1831/2003. BHT is already authorised as feed additive under Commission Directive 70/524/EEC.

According to the two Applicants (FAD 2010-0237 & FAD 2010-0300), BHT is a white or colourless solid powder with a minimum purity of 99.5%. Specifically, authorisation is sought for the use of the feed additive for all animal species and categories. The feed additive is intended to be mixed in premixtures or added directly in complete feedingstuffs. Furthermore, the Applicants proposed a maximum level of 150 mg/kg for BHT alone or for the sum of BHT with Butylated hydroxy anisole (BHA, E320) and/or Ethoxyquin (E324).

For the determination of BHT in the feed additive, Applicant (FAD-2010-0237) submitted the internationally recognised FAO JECFA method based on Gas Chromatography coupled to Flame Ionization Detection (GC-FID). Even though no performance characteristics of this method are provided, the EURL recommends for official control the internationally recognised FAO JECFA method based on GC-FID to determine BHT in the feed additive.

For the determination of BHT in premixtures and feedingstuffs Applicant (FAD-2010-0300) submitted a single laboratory validated and further verified multi-analyte method, based on Reversed Phase High Performance Liquid Chromatography coupled with UltraViolet or Diode-Array Detection (RP-HPLC-UV or DAD). The following performance characteristics were reported for concentrations ranging from 5 to 120 g/kg and from 35 to 226 mg/kg, for premixtures and feedingstuffs, respectively:

- a standard deviation for repeatability (RSDr) ranging from 1.4 to 6.6%;
- a standard deviation for intermediate precision (RSDip) ranging from 3.3 to 11.4%;
- a recovery rate (RRec) ranging from 86.9% to 114%; and
- a limit of quantification (LOQ) below the lowest concentration investigated of 35 mg/kg.

Based on the performance characteristics presented, the EURL recommends for official control, the single laboratory validated and further verified RP-HPLC-UV (or DAD) method, submitted by the Applicant, to determine BHT in premixtures and feedingstuffs.

According to the Applicant (FAD 2010-0300) the above mentioned multi-analyte technique, submitted for the determination of BHT in premixtures and feedingstuffs, allows the quantification of other synthetic antioxidants such as BHA and Ethoxyquin (in premixtures only). Furthermore, the EURL identified the ring trial validated method by the Association of Official Analytical Chemists (AOAC 996.13 – 'Ethoxyquin in feeds') based on isocratic RP-HPLC system coupled with fluorescence detection (RP-HPLC-FD). The following relative precisions (repeatability and reproducibility) were reported: ranging from 0.6 to 6.4% for BHA in premixtures and feedingstuffs; and ranging from 2.1 to 5.4% and 4.5 to 29% for Ethoxyquin in premixtures and feedingstuffs, respectively.

Based on the performance characteristics presented, the EURL considers the following methods suitable for official control:

the single laboratory validated and further verified RP-HPLC-UV (or DAD) method, submitted by the Applicant, for the determination of BHA in premixtures and feedingstuffs and for the determination of Ethoxyquin in premixture (only); and

the ring trial validated RP-HPLC-FD method characterised by the "Association of Official Analytical Chemists" (AOAC 996.13) for the determination of Ethoxyquin in feedingstuffs.

Further testing or validation of the methods to be performed through the consortium of National Reference Laboratories as specified by Article 10 (Commission Regulation (EC) No 378/2005) is not considered necessary.