

## Corrigendum

# Corrigendum to “Analysis of the Complete Mitochondrial Genome Sequence of the Diploid Cotton *Gossypium raimondii* by Comparative Genomics Approaches”

Changwei Bi <sup>1</sup>, Andrew H. Paterson,<sup>2</sup> Xuelin Wang,<sup>1</sup> Yiqing Xu,<sup>1</sup> Dongyang Wu,<sup>1,3</sup> Yanshu Qu,<sup>1</sup> Anna Jiang,<sup>1</sup> Qiaolin Ye,<sup>1</sup> and Ning Ye <sup>1</sup>

<sup>1</sup>College of Information Science and Technology, Nanjing Forestry University, Nanjing, Jiangsu, China

<sup>2</sup>Plant Genome Mapping Laboratory, University of Georgia, Athens, GA 30602, USA

<sup>3</sup>The Southern Modern Forestry Collaborative Innovation Center, Nanjing Forestry University, Nanjing, Jiangsu, China

Correspondence should be addressed to Ning Ye; [yening@njfu.edu.cn](mailto:yening@njfu.edu.cn)

Received 16 July 2019; Accepted 17 July 2019; Published 28 August 2019

Copyright © 2019 Changwei Bi et al. This is an open access article distributed under the Creative Commons Attribution License, which permits unrestricted use, distribution, and reproduction in any medium, provided the original work is properly cited.

In the article titled “Analysis of the Complete Mitochondrial Genome Sequence of the Diploid Cotton *Gossypium raimondii* by Comparative Genomics Approaches” [1], there were several errors that should be corrected as follows: (i) the references in the text to Figures 4 and 5 are reversed and should be exchanged; (ii) in Figure 5, the Ka/Ks values for *C. papaya* versus *G. raimondii* for *ccmFC* are inaccurate; (iii) in Figure 5, the gene *ccmFC* should be replaced by *ccmFN*. The correct Ka/Ks values for each protein-coding gene between *C. papaya* and *G. raimondii* and between *P. tremula* and *G. raimondii* are available in a supplementary file.

## Supplementary Materials

The raw Ka/Ks values for each protein-coding gene in *C. papaya*, *G. raimondii*, and *P. tremula*. (*Supplementary Materials*)

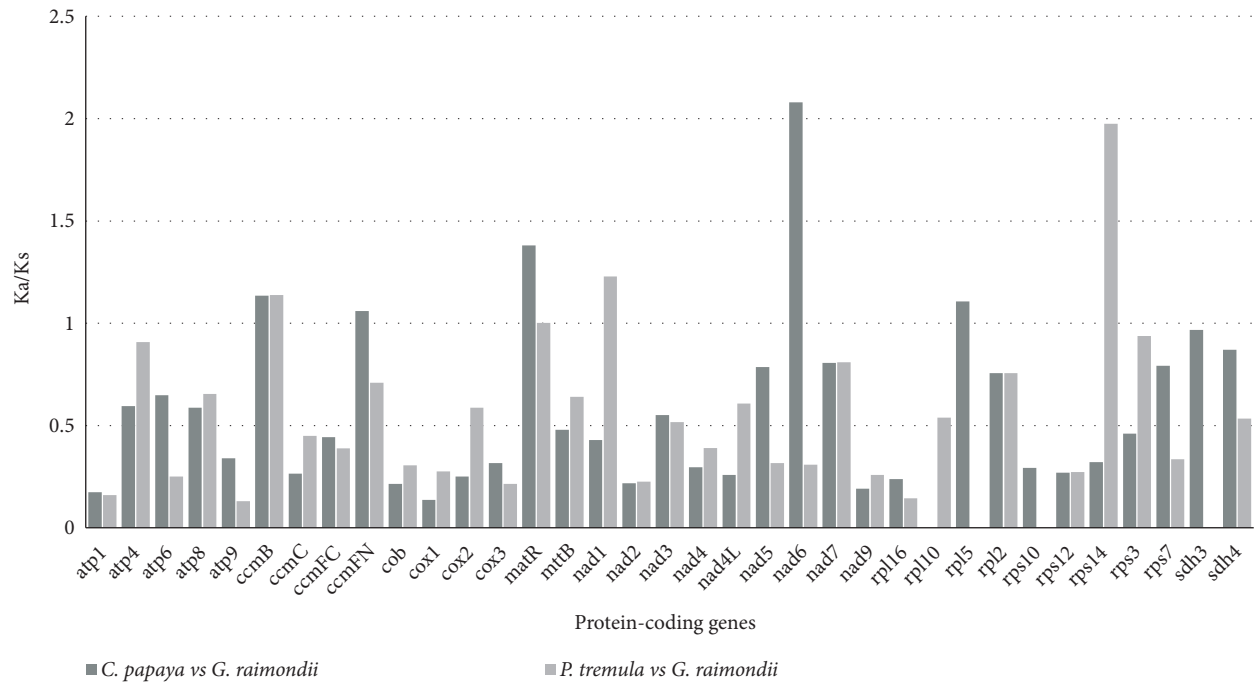


FIGURE 5: Ka/Ks values of 36 protein-coding genes of *G. raimondii*, *C. papaya*, and *P. tremula*. Deep brown and light brown boxes indicate the Ka/Ks ratio of *C. papaya* vs. *G. raimondii* and *P. tremula* vs. *G. raimondii*, respectively.

## References

- [1] C. Bi, A. H. Paterson, X. Wang et al., "Analysis of the complete mitochondrial genome sequence of the diploid cotton *Gossypium raimondii* by Comparative genomics approaches," *BioMed Research International*, vol. 2016, Article ID 5040598, 18 pages, 2016.