

RESEARCH ARTICLE

# Benthic macroinfaunal community structure, resource utilisation and trophic relationships in two Canadian Arctic Archipelago polynyas

Anni Mäkelä<sup>1\*</sup>, Ursula Witte<sup>1</sup>, Philippe Archambault<sup>2,3¶</sup>

**1** Oceanlab, School of Biological Sciences, University of Aberdeen, Newburgh, Aberdeenshire, United Kingdom, **2** Institut des Sciences de la mer de Rimouski, Université du Québec à Rimouski, Rimouski, Canada, **3** Hopkins Marine Station, Stanford University, Pacific Grove, CA, United States of America

¶ Current address: Département de biologie, Université Laval, Québec, QC, Canada

\* [anni.makela1@gmail.com](mailto:anni.makela1@gmail.com)



**OPEN ACCESS**

**Citation:** Mäkelä A, Witte U, Archambault P (2017) Benthic macroinfaunal community structure, resource utilisation and trophic relationships in two Canadian Arctic Archipelago polynyas. PLoS ONE 12(8): e0183034. <https://doi.org/10.1371/journal.pone.0183034>

**Editor:** Jong Seong Khim, Seoul National University, REPUBLIC OF KOREA

**Received:** November 22, 2016

**Accepted:** July 29, 2017

**Published:** August 29, 2017

**Copyright:** © 2017 Mäkelä et al. This is an open access article distributed under the terms of the [Creative Commons Attribution License](https://creativecommons.org/licenses/by/4.0/), which permits unrestricted use, distribution, and reproduction in any medium, provided the original author and source are credited.

**Data Availability Statement:** All relevant data are within the paper and its Supporting Information file.

**Funding:** This work was supported by Natural Environment Research Council grant NE/J023094, <http://www.nerc.ac.uk> (UW); University of Aberdeen “The North” theme (AM); ArcticNet, <http://www.arcticnet.ulaval.ca/> (PA). The funders had no role in study design, data collection and analysis, decision to publish, or preparation of the manuscript.

## Abstract

Climate change driven alterations to patterns of Arctic marine primary production, with increasing phytoplankton- and decreasing ice algal production, have the potential to change the resource utilisation and trophic structure of the benthic communities relying on the algae for food. To predict the benthic responses to dietary changes, we studied the macroinfaunal community compositions, and used the faunal  $\delta^{13}\text{C}$  and  $\delta^{15}\text{N}$  signatures to investigate their main food sources and trophic positions in North Water (NOW) and Lancaster Sound (LS) polynyas in the Canadian Arctic Archipelago. Macroinfaunal density ( $10\,952\text{ ind. m}^{-2}$ ) and biomass ( $3190\text{ mg C m}^{-2}$ ) recorded in NOW were higher than previously found in the Arctic at depths  $>500\text{m}$ , and significantly higher than in LS ( $8355\text{ ind. m}^{-2}$  and  $2110\text{ mg C m}^{-2}$ ). This was attributed to higher particulate organic matter fluxes to seafloor in NOW. Polychaetes were significant taxa at both sites in terms of density and biomass, and in addition crustacean density in NOW and bivalve density in LS were high. Facultative filter and surface deposit feeders were highly prevalent at both sites, suggesting feeding plasticity is a successful strategy for accessing different food sources. The macrofaunal  $\delta^{13}\text{C}$  signatures reflected the signatures of pelagic particulate organic matter at the sites, and an isotope mixing model confirmed phytoplankton as the main food source for most taxa and feeding guilds. The food web length in LS was longer than in NOW (3.2 vs. 2.8 trophic levels). This was attributed to a larger reliance on reworked organic matter by the benthic community in LS, whereas the high export fluxes at the highly productive NOW resulted in higher rates of selective consumption of fresh algal matter. Despite studies suggesting that loss of ice algae from consumer diets in the Arctic might have a negative impact on the benthos, this study suggests that Arctic macrobenthic communities thrive using phytoplankton as their main food source and should thus be able to cope or even benefit from predicted changes to patterns of primary production.

**Competing interests:** I have read the journal's policy and the authors of this manuscript have the following competing interests: Philippe Archambault is currently on the Editorial Board of PLOS ONE. This does not alter our adherence to PLOS ONE policies on sharing data and materials.

## Introduction

Climate change is drastically altering the Arctic marine ecosystem, and sea ice cover, the most conspicuous feature of the Arctic Ocean, is being reduced at a rate that could leave the region free of summer sea ice by 2040 [1]. Alongside light availability, summer sea ice is the dominant factor controlling the type, timing and duration of Arctic primary productivity [2], which in turn impacts the functioning and structure of the benthic communities that rely upon the sinking phytodetritus for food [3–5]. Sea ice provides a habitat for ice algae that bloom early in the spring when low levels of light are available, but limits the growth of phytoplankton that require more light and open water to grow [2]. As climate change is rapidly increasing the length of the open water period throughout the Arctic, a significant decrease in ice algal primary production is expected [6,7], whilst the longer phytoplankton growth season is predicted to increase the marine primary production overall [8–11].

Already, areas in the Arctic Ocean with an elongated open water period are eutrophic hotspots with high rates of primary and secondary production [12–16]. The export of particulate organic matter (POM) to the seafloor is higher in these hotspots compared to less productive Arctic waters [17,18], especially during the early spring when zooplankton grazing and growth is limited [19,20]. This tight benthic-pelagic coupling is then generally reflected in the high benthic community biomass at these sites [21–25], although increased water depth weakens the relationship [26]. Information on benthic communities in certain regions, such as the Canadian Arctic Archipelago, is however still scarce [27], making it difficult to assess whether similar environmental controls dictate benthic community composition throughout the Arctic. Especially macrofauna are often underrepresented in benthic community descriptions, despite their significant role in the benthic ecosystem functioning [5,28–30]. Even in North Water Polynya (NOW), one of the most well-studied and most biologically productive ecosystems in the Arctic [31,32], data on benthic macroinfauna is limited in taxonomic detail or spatial extent [24,33–35]. This lack of baseline data makes it difficult to monitor the influence of climate change on the benthic communities as a whole.

Despite studies suggesting that the decreasing summer sea ice cover and increasing overall primary productivity can benefit Arctic benthos [36,37], it is still unclear how the change in the type of primary production will impact the benthic fauna. Despite the lower annual primary production rates compared to phytoplankton [38], ice algae are thought to provide a significant early spring food source for benthic consumers [39,40]. Additionally, ice algal assemblages contain a higher proportion of polyunsaturated fatty acids (PUFA) than phytoplankton [41–43], although specific phytoplankton species can have high PUFA concentrations [44]. As PUFAs are essential for maintenance, reproduction and growth of both pelagic [6,45] and benthic [42,46] organisms, the higher PUFA content is thought to make ice algae superior quality food over phytoplankton [43]. Ice algae have been shown in feeding experiments to be the preferred food item for *Macoma balthica* bivalves and deposit feeders [41,42], but information on the natural contributions of ice algae, phytoplankton and other C sources to the diets of Arctic macrobenthos is mainly available for the shallow (<100 m) communities in the Bering and Chukchi Seas [47–50]. These studies show that organic matter (OM) reworked by bacteria is a significant food source for macrobenthos, with significant macroalgal and terrestrial contributions at near-shore sites [51–58]. The benthic food web structure then reflects the quantity and quality of food available, with longer food webs found in the sites with efficient recycling of refractory material [56]. Whether the benthic macroinfaunal communities in the deep Canadian Arctic Archipelago utilise similar foods and have a similar trophic structure than their shallow water counterparts, is yet unknown.

Stable isotope analysis is a commonly used approach to study resource utilisation and community trophic structures. Stable isotope ratios ( $^{12}\text{C}$ : $^{13}\text{C}$  and  $^{14}\text{N}$ : $^{15}\text{N}$ ) can provide insight into trophic relationships and consumer food sources when the traditional methods (eg. gut content analysis, behavioural studies) are inappropriate due to the extremely small size of sediment infauna or other restrictions [59]. In addition, isotope signatures allow the investigation of long term accumulation of OM into tissues, rather than a snapshot of the short-term ingestion. Carbon isotopes can be used to investigate the OM sources used by the benthic consumers, as the change in  $\delta^{13}\text{C}$  between the primary producer and the consumer is  $<1\%$  [60–62]. As phytoplankton derived OM is usually more depleted in  $\delta^{13}\text{C}$  compared to ice algae derived OM [39,42,63,64],  $\delta^{13}\text{C}$  can be used to quantify the reliance of macrofauna on the two types of primary consumers. Additionally, isotope mixing models, utilising both  $\delta^{13}\text{C}$  and  $\delta^{15}\text{N}$ , can further help to elucidate the proportions of different food items in consumer diets as they allow a degree of variability in both source and consumer signatures to be included [65]. Additionally,  $\delta^{15}\text{N}$  shows enrichment of 3.4–3.8‰ per trophic level [60,61,66], and can therefore be used to elucidate the trophic interactions and food web structure within a community.

Previous studies have well illustrated the impacts of overlying water column properties on benthic community standing stock, diet and taxonomic and trophic structures in the shallow Chukchi and Bering Seas [47,50,67], but due to limited research efforts in the Canadian Arctic, our understanding of the benthic communities and their resource utilisation in the region is still elementary. The objectives of this study are thus i) to describe the benthic macroinfaunal community compositions in two contrasting Canadian Arctic Archipelago deep sea sites, North Water Polynya (NOW), the largest and most productive polynya in the northern hemisphere [17,20,39], and the smaller Lancaster Sound Polynya (LS), and ii) to compare the macroinfaunal resource utilisation and trophic relationships using faunal  $\delta^{13}\text{C}$  and  $\delta^{15}\text{N}$  signatures. The two sampling stations were selected because they are among the deepest sites in the Canadian Arctic [35], but the primary productivity in NOW is significantly higher than in LS [14,68]. Whereas only 3% of the local primary production in NOW is attributed to ice algae, in LS they contribute up to 10% [68–70], making the sites ideal for comparing the impact on quality and quantity of food on the benthos. We hypothesise that the higher surface water productivity at the NOW station supports a higher benthic macroinfaunal density and biomass compared to the LS station, but that less abundant food leads to a more complex benthic food web in LS.

## Methods

### Sampling sites

Field sampling took place in August 2013 (Table 1) during the ArcticNet 2013 cruise aboard the research icebreaker CCGS Amundsen. The two study locations, North Water Polynya (station 124) and Lancaster Sound Polynya (station 323), are both situated in the western Baffin Bay region in the Canadian High Arctic (Fig 1, Table 1). With a maximum extent of 80 000  $\text{km}^2$ , NOW is regarded as one of the largest and well-studied polynyas in the Northern hemisphere [71] and the largest in the Canadian Arctic [13]. LS and NOW polynyas are among the most biologically productive areas in the Canadian Arctic [13,14,72], with estimated annual new production rates of  $60 \text{ g C m}^{-2} \text{ y}^{-1}$  and  $254 \text{ g C m}^{-2} \text{ y}^{-1}$ , respectively [14,68]. The maximum summer extents of the polynyas have been included in Fig 1 [73]. Peak phytoplankton production in NOW reaches  $1.11 \text{ g C m}^{-2} \text{ d}^{-1}$ , which is an order of magnitude higher than in adjacent Baffin Bay waters [17]. The peak phytoplankton blooms occur in May–June and July–August time in NOW and LS, respectively [14,17,74]. Both sites had been ice free ( $<1/10$  ice cover) for two weeks before the sampling took place. Ice cover was confirmed from the Canadian Ice

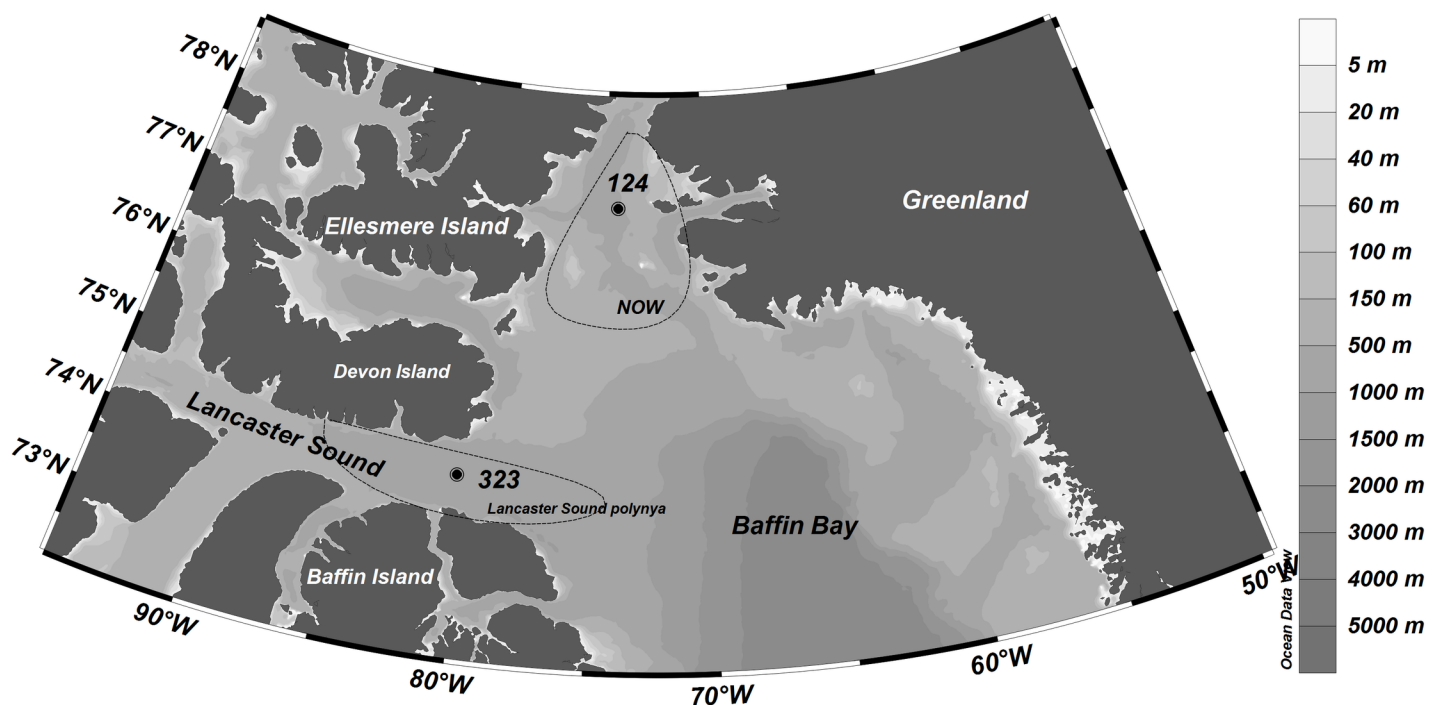
**Table 1. Sampling station, hydrographic and sediment characteristics in Lancaster Sound and North Water Polynya (NOW) in August 2013.**

	Lancaster Sound	NOW
ArcticNet 2013 station number	323	124
Date sampled	14.08.2013	27.08.2013
Depth (m)	794	709
Latitude	74°9.41 N	77°20.79 N
Longitude	80°28.32 W	74°17.50 W
Bottom O2 concentration (ml l <sup>-1</sup> )	4.1	5.6
Bottom temperature (°C)	1.2	-0.1
Bottom salinity	34.5	34.4
Sea ice cover (%)	0	0
Sediment OM content (%)	11.3	9.5
Sediment chl- <i>a</i> (mg DW m <sup>-2</sup> )	12.9	20.5
Sediment phaeopigments (mg DW m <sup>-2</sup> )	64.5	60.5
Sediment total pigments (mg DW m <sup>-2</sup> )	77.4	81
Chl- <i>a</i> /Phaeopigment ratio	0.2	0.34
C/N (w/w, n = 9)	6.55 (±0.07)	6.49 (±0.09)
Surface sediment δ <sup>13</sup> C (n = 3)	-20.0 (±0.7)	-20.6 (±0.7)
Surface sediment δ <sup>15</sup> N (n = 3)	8.3 (±0.3)	7.4 (±0.1)

<https://doi.org/10.1371/journal.pone.0183034.t001>

Service (CIS) weekly ice charts on eastern Canadian Arctic, available at <http://iceweb1.cis.ec.gc.ca/Archive20/page1.xhtml>.

Field sampling licences were obtained from the Danish Ministry of Foreign Affairs (Survey License #55.GRØNLAND.9 for collection and/or acquisition of biological resources for



**Fig 1. Locations of the sampling sites in North Water Polynya (st. 124) and Lancaster Sound Polynya (st. 323).**

<https://doi.org/10.1371/journal.pone.0183034.g001>

research purposes in Greenland Waters), United Nations (Consent to Conduct Marine Scientific Research in Areas Under National Jurisdiction of Greenland), Nunavut Research Institute (NRI) (Scientific Research License #0500913N-M), Northwest Territories (Aurora Research Institute Northwest Territories Scientific Research License #15213 and #15271) and Department of Fisheries and Oceans Canada (License to fish for scientific purposes in the waters of the Northwest Territories, Yukon North Slope, and Nunavut Territory #S-13/14-1021-NU).

## Sample collection

Two USNEL box corers (0.25m<sup>2</sup>) were taken from the seafloor at each station to allow for collection of 15 ~10 cm diameter sediment sub-cores. Half of each sub-core was used for macrofauna collection and the other half for phospholipid fatty acid analysis to quantify the sediment bacterial biomass (Mäkelä et al. in prep.). The cores were sliced at 0–5 cm and 5–10 cm sediment horizons, sieved through a 500 µm sieve, and the macrofauna collected was preserved in 4% buffered seawater formalin until analysis. Formalin preservation was used to ensure the small and fragile faunal samples would remain intact to allow for identification to the lowest possible taxonomic level [75]. Data from all 15 cores were used for density, biomass and community composition analysis and samples from 3 cores were used to determine invertebrate tissue  $\delta^{13}\text{C}$  and  $\delta^{15}\text{N}$  signatures. At each site, water temperature, salinity and dissolved oxygen concentrations were recorded 10 meters above seafloor using a ship board CTD profiler. Additional surface sediment (top 0.5 cm) samples for sediment pigment (chl-*a* and phaeopigment) analysis were also collected from the box corer. Approximately 2 g of the sediment were used for the pigment analysis following the method by Riaux-Gobin & Klein [76]. Sediment samples were stored at -80°C prior to processing.

## Community composition

The macrofauna samples were identified to the lowest possible taxonomic level. Specimens without heads as well as unidentified animal fragments were excluded from the density, but included in the biomass calculations. The specimens were placed in pre-weighed tin cups and dried for 48 h at 60°C, after which the dry mass was recorded. The measurements include shells but not tube structures of polychaetes. Specimens of nematodes and foraminifera were excluded from the biomass and density calculations and the isotope analysis, as these taxa are usually regarded as meiofauna and the majority of the specimens were not retained in the sieve. The community composition was described in terms of total community C and N biomass and density (average from 15 replicates/station), as well as to phylum, family or species level depending on data resolution (pooled accounts from 15 cores/station). The faunal C and N biomass was calculated by multiplying the sample dry mass with the C and N content of each sample, obtained during the isotope ratio determination.

Attribution of feeding guilds was according to the best available sources [33,77,78], and all animals that could be identified to low taxonomic level to allow determination of feeding guild were included in the feeding guild composition description for the sites. The animals were assigned to one of the following: facultative filter feeder-surface deposit feeder (FF/SDF), obligate filter feeder (FF), predator-scavenger-omnivore (P/S), subsurface deposit feeder (SSDF) or obligate surface deposit feeder (SDF).

## $\delta^{13}\text{C}$ and $\delta^{15}\text{N}$ analysis

All fauna from 3 sediment sub-cores were used for the determination of natural abundance isotope signatures, covering majority of the common taxa present at the sites. As the size of individual fauna was extremely small, several individuals of the same taxa within each core

were combined together, homogenized and analysed as one sample to ensure enough biomass for the analysis. This is also why complete individuals instead of selected tissues were used in the analysis. The dried invertebrate samples with carbonate structures (echinoderms, crustaceans and bivalves) were acidified in silver cups by adding drops of 1M HCl [79], and allowed to dry without rinsing to ensure no acid soluble proteins or sample biomass was lost [80]. Similarly, samples collected for sediment  $\delta^{13}\text{C}$  and  $\delta^{15}\text{N}$  analysis were also acidified with 1M HCl. The sediments were allowed to dry between acid addition (10  $\mu\text{l}$  at a time) and the process was continued until bubbling seized to indicate the inorganic carbon had been dissolved. All samples, including acidified samples in silver cups, were encapsulated in tin cups for analysis. The samples were simultaneously analysed for  $^{13}\text{C}$ - $^{15}\text{N}$  isotopic signatures due to limited sample biomass. Samples from 0–5 cm and 5–10 cm layers were analysed separately but combined for the core average.

The total C and N concentrations and the  $\delta^{13}\text{C}$  and  $\delta^{15}\text{N}$  natural abundance isotope ratios of the pooled animal samples were determined using a PDZ Europa ANCA-GSL elemental analyser interfaced to a PDZ Europa 20–20 isotope ratio mass spectrometer (Sercon Ltd., Cheshire, UK). During analysis, the samples were interspersed with several replicates of at least 4 different National Institute of Standards and Technology (NIST) laboratory standards (glutamic acid GLU, Nylon 5, USGS-41 glutamic acid, REF5 FIVER, IsoLife maize, bovine liver), which have previously been calibrated against NIST standard reference materials (IAEA-N1, IAEA-N2, IAEA-N3, USGS-40 and USGS-41). Long term standard deviation for the stable isotope measurements is 0.2‰ for  $^{13}\text{C}$  and 0.3‰ for  $^{15}\text{N}$ .

The total carbon and total nitrogen concentrations and the  $\delta^{13}\text{C}$  and  $\delta^{15}\text{N}$  natural abundance isotope ratios of the sediments were determined using a Flash EA 1112 Series Elemental Analyser connected via a ConFlo III to a Delta<sup>plus</sup> XP isotope ratio mass spectrometer (all Thermo Finnigan, Bremen, Germany). The isotope ratios were traceable to International Atomic Energy Agency reference materials USGS40 and USGS41 (both L-glutamic acid); certified both for  $\delta^{13}\text{C}$  (‰<sub>V<sub>P</sub>D<sub>B</sub></sub>) and  $\delta^{15}\text{N}$  (‰<sub>air N<sub>2</sub></sub>). The carbon and nitrogen contents of the samples were calculated from the area output of the mass spectrometer calibrated against National Institute of Standards and Technology standard reference material 1547 peach leaves which was analysed with every batch of ten samples. Long term precisions for a quality control standard (milled flour) were: total carbon  $40.24 \pm 0.29\%$ ,  $\delta^{13}\text{C}$   $-25.4 \pm 0.21\%$ , total nitrogen  $1.72 \pm 0.035\%$  and  $^{15}\text{N}$   $0.3672 \pm 0.0001$  atom % (mean  $\pm$  SD,  $n = 200$ ).

Stable isotope values are expressed in the  $\delta$  notion (‰) relative to the reference material according to the equation:

$$\delta X(\text{‰}) = (R_{\text{sample}} - R_{\text{reference}}) - 1 \times 1000 \quad (1)$$

Where  $X = ^{15}\text{N}$  or  $^{13}\text{C}$ ,  $R_{\text{sample}}$  is the  $^{13}\text{C}:^{12}\text{C}$  or  $^{15}\text{N}:^{14}\text{N}$  ratio of the sample and  $R_{\text{reference}}$  is the  $^{13}\text{C}:^{12}\text{C}$  or  $^{15}\text{N}:^{14}\text{N}$  ratio of the reference material for C or N. The international reference material for C is the Vienna Pee Dee Belemnite ( $R_{\text{VPDB}} = 0.0112372$ ) and for N it is the isotopic ratio of atmospheric  $\text{N}_2$  ( $R_{\text{atmN}} = 0.0036765$ ).

Formalin preservation is known to alter the  $\delta^{13}\text{C}$  signatures of fauna, so to correct for the effect of preservation, 1‰ was added to each  $\delta^{13}\text{C}$  measurement [81–84]. This 1‰ correction is supported by several methodological papers which show a decrease of 1‰ in sample  $\delta^{13}\text{C}$  signatures after formalin preservation [85–91]. The impacts of formalin preservation on  $\delta^{15}\text{N}$  signatures has been shown to be insignificant [75,85–87,91,92] and therefore no correction was applied.

The proportion of ice algae and phytoplankton in the macrofaunal diets was determined by using a Bayesian isotope mixing model (Stable Isotope Analysis in R, SIAR) [93], using ice

algae and pelagic POM (a proxy for phytoplankton)  $\delta^{13}\text{C}$  and  $\delta^{15}\text{N}$  values collected by Roy et al. [94] at the same sampling station 323 in LS and another sampling site in NOW in 2011, as well as values reported by Hobson & Welch in LS [66] and Hobson et al. in NOW [39]. The SIAR model is specifically designed to absorb temporal variability in both food source and consumer isotopic signatures, thus making it an ideal tool for examining the contributions of ice algae and phytoplankton to consumer diets when several end member isotopic profiles are available. The model used 1‰ enrichment/trophic level for  $\delta^{13}\text{C}$  and 3.8‰ enrichment/trophic level for  $\delta^{15}\text{N}$ .

Additionally, the  $\delta^{13}\text{C}$ - $\delta^{15}\text{N}$  signatures of consumers were used to plot the Euclidean distances of samples within the sites to calculate two trophic structure metrics. The mean distance of each sampled taxa to the  $\delta^{13}\text{C}$ - $\delta^{15}\text{N}$  centroid (CD) was used to compare the trophic separation, and the mean nearest neighbouring distance (NND) of the taxa was calculated to investigate the trophic redundancies of the sites. Larger mean CD values indicate higher trophic separation and smaller NND values indicate higher trophic redundancy. Trophic metrics were calculated using MATLAB R0214a based on the method of Layman et al. [95].

### Trophic level determination

The trophic level (TL) of each sample was calculated from the sample  $\delta^{15}\text{N}$  value, assuming an increase of 3.8‰ in the isotope signature per trophic level. The 3.8‰ stepwise enrichment was chosen as it has previously been established for the marine food web in the Lancaster Sound region [66]. There are several baseline measurements that can be used for determining the consumer trophic positions, including primary consumer  $\delta^{15}\text{N}$  values [47,55,67,96] and POM [50,58,97] or ice algal [97] signatures. Additionally, the surface sediment bulk  $\delta^{15}\text{N}$  signature can be used, which encompasses both the deposited ice algal and phytoplankton food sources [98], making it a better representation of the C and N pool available to benthos compared to surface water POM at the time of sampling [98,99]. Here the *in situ* sediment  $\delta^{15}\text{N}$  signatures were used, which were  $8.3 \pm 0.3\text{‰}$  and  $7.4 \pm 0.1\text{‰}$  in LS and NOW, respectively (Table 1). The consumer trophic levels were thus calculated using the equation

$$\text{TL}_{\text{consumer}} = \frac{(\delta^{15}\text{N}_{\text{consumer}} - \delta^{15}\text{N}_{\text{sediment}})}{3.8 + 1} \quad (2)$$

### Statistical analysis

Differences in density and C biomass between the study sites was tested using an Independent sample T-test and N biomass was tested using Mann-Whitney U test. Differences in  $\delta^{13}\text{C}$  and  $\delta^{15}\text{N}$  signatures between sites and feeding guilds was tested for SDF, SSDF and P/S, but FF/SDF group was excluded due to small sample size. The  $\delta^{13}\text{C}$  signatures were compared using a Two-Way ANOVA test with site (2 levels: LS and NOW) and feeding guild (3 levels: SDF, SSDF and P/S) acting as the two fixed factors being tested for their main effects and the interaction between them. The  $\delta^{15}\text{N}$  signatures were tested separately for within station differences between feeding guilds using either a One-Way ANOVA or Kruskal-Wallis test when data residuals were not normally distributed, and then between sites for each feeding guild using either an Independent samples t-test or a Mann-Whitney U test. Deviations from homogeneity of variance assumption were corrected by using the Welch correction, and Games-Howell post hoc test was used when appropriate. The normality of the data residuals was tested using the Shapiro-Wilk test and the homogeneity of residual variance was tested visually. When required, a log10 transformation was applied to ensure the residual normality assumption was fulfilled.

## Results

### Macroinfaunal density and biomass

Approximately 95% of the specimens were recovered from the upper 5 cm of sediment at both stations (Table 2). Additionally, ~90% of biomass in LS and ~75% in NOW was concentrated in the upper sediment layer. For statistical comparison of total density and biomass, the 0–5 cm and 5–10 cm layers were pooled into one 0–10cm layer. An independent samples t-test showed that the macroinfauna density in NOW was significantly higher than in LS ( $t = 2.351$ ,  $df = 28$ ,  $p = 0.026$ ).

The C biomass at the NOW (Table 2) site was found to be significantly higher than the LS biomass (Independent samples t-test,  $t = 2.746$ ,  $df = 26.168$ ,  $p = 0.011$ ). Differences in N biomass between the sites were analysed using a Mann-Whitney U test and no statistically significant difference was found between the sites ( $U = 85.000$ ,  $p = 0.267$ ). In one of the cores in NOW, the presence of one larger Maldanidae polychaete in the 5–10 cm layer contributed 41% and 50% to C and N biomass, but was considered macrofaunal sized and included in the total core estimation. LS had 3 large bivalves, mainly *Bathyarca glacialis* individuals, present in the cores. While these bivalves are classified as infauna, they were regarded as megafauna as they were an order of magnitude greater than all other fauna collected, with the three individuals amounting to twice as much biomass as the other 475 individuals collected at the site combined. These 3 individuals were therefore excluded from the data presented in Table 2 and from the statistical analysis of the macroinfaunal biomass between the sites. They were also excluded from the community biomass description. The total biomass of these 3 large individuals amounted to  $3666 \text{ mg C m}^{-2}$  and  $833 \text{ mg N m}^{-2}$ , indicating the occasional megafauna can have a large impact on the benthic faunal biomass.

### Community composition–density

Overall 31 family level taxa were identified at both sites, which included 16 polychaetes, 10 crustaceans (10 genera), 3 bivalves and 2 ophiuroids in NOW, and 18 polychaetes, 5 crustaceans (6 genera), 6 bivalves, 1 caudofoveata and 1 sipunculid in LS (Table 3). At both sites polychaetes were significant taxa in terms of macroinfaunal density, with 35% and 43% contribution to the total community at the NOW and LS sites, respectively. Additionally, NOW had a high density of crustaceans (57%), whereas the bivalves contributed 41% to overall community density in LS with the family Thyasiridae making up most of the density and biomass. The polychaete species *Prionospio cirrifera* and the cumacean *Eudorellopsis integra* were especially abundant, with *P. cirrifera* making up 8% and 13% of the whole community density in NOW and LS, and *E. integra* contributed 45% to macroinfaunal density in NOW. The majority of the animals (including the highly abundant Spionidae polychaetes and Leuconidae cumaceans) at both sites were identified as FF/SDF. This feeding guild therefore dominated density at both sites.

**Table 2. Vertical distribution of sediment macroinfaunal density and macroinfaunal C and N biomass at the North Water Polynya (NOW) and Lancaster Sound (LS) sites.** Data are mean  $\pm$  SE ( $n = 15$ ). LS biomass calculations excluded 3 large bivalves found in the cores.

Site	Sediment layer (cm)	Density (ind. $\text{m}^{-2}$ )	Biomass (mg C $\text{m}^{-2}$ )	Biomass (mg N $\text{m}^{-2}$ )
NOW	0–5	10538 $\pm$ 860	2465 $\pm$ 203	422 $\pm$ 38
	5–10	414 $\pm$ 46	725 $\pm$ 306	145 $\pm$ 72
LS	0–5	7949 $\pm$ 488	1937 $\pm$ 340	441 $\pm$ 81
	5–10	407 $\pm$ 99	173 $\pm$ 31	39 $\pm$ 7

<https://doi.org/10.1371/journal.pone.0183034.t002>



**Table 3. Relative density and C and N biomass of sediment macroinfauna in North Water Polynya (NOW) and Lancaster Sound (LS) sampling sites.** The data are presented without the 3 megafaunal *Bathyporeia glacialis* bivalves in LS.

Taxa	North Water			Lancaster Sound			Feeding guild
	Density (%)	C biomass (%)	N biomass (%)	Density (%)	C biomass (%)	N biomass (%)	
Nemertea	< 1	4.0	4.0	< 1	< 1	< 1	
Platyhelminthes				< 1	< 1	< 1	
Porifera				< 1	< 1	< 1	FF
Sipuncula	< 1	< 1	< 1	5.1	1.0	1.1	
Golfingiidae				< 1	< 1	< 1	SDF
Ascidiacea	< 1	< 1	< 1				FF
Actiniaria	< 1	2.2	2.2				P/S
<b>Echinodermata total</b>	<b>1.1</b>	<b>1.6</b>	<b>2.0</b>	<b>1.3</b>	<b>&lt; 1</b>	<b>&lt; 1</b>	
Asteroidea	< 1	< 1	< 1	< 1	< 1	< 1	
Ophiuroidea	< 1	< 1	< 1	< 1	< 1	< 1	
Ophiurida	< 1	< 1	< 1	< 1	< 1	< 1	FF/SDF
Amphiuridae	< 1	< 1	< 1				FF/SDF
Ophiolepididae	< 1	< 1	< 1				FF/SDF
Scaphopoda				< 1	< 1	< 1	
Caudofoveata: <i>Chaetoderma</i> sp.				< 1	< 1	< 1	P/S
<b>Bivalvia total</b>	<b>4.8</b>	<b>9.6</b>	<b>10.1</b>	<b>40.8</b>	<b>7.9</b>	<b>7.2</b>	
unidentified juveniles	3.7	5.9	6.2	19.8	3.0	2.7	
Arcidae				< 1	< 1	< 1	FF
Mytilidae	< 1	< 1	< 1				FF
<i>Cuspidaria</i> sp.				< 1	< 1	< 1	P/S
<i>Nucula</i> sp.	< 1	< 1	< 1				FF/SDF
Pectinidae				< 1	1.5	1.4	FF
Thyasiridae	< 1	< 1	< 1	20.2	3.2	2.8	FF/SDF
<i>Thyasira</i> sp.	< 1	2.7	2.9				FF/SDF
Yoldiidae				< 1	< 1	< 1	FF/SDF
<b>Crustacea total</b>	<b>57.3</b>	<b>10.5</b>	<b>7.4</b>	<b>7.6</b>	<b>3.8</b>	<b>2.6</b>	
<b>Amphipoda</b>				< 1	< 1	< 1	
Amphipoda				< 1	< 1	< 1	
Ampeliscidae	< 1	< 1	< 1				FF
Lysianassidae	< 1	< 1	< 1				P/S
<i>Arrhis</i> sp.	< 1	< 1	< 1	< 1	< 1	< 1	FF/SDF
<i>Aceroides latipes</i>							P/S
<i>Monoculodes</i> sp.	< 1	< 1	< 1				P/S
<b>Cumacea</b>				1.1	< 1	< 1	
Diastylidae	1.3	< 1	< 1	< 1	< 1	< 1	FF/SDF
<i>Diastylis</i> spp.	1.4	< 1	< 1	< 1	1.0	< 1	FF/SDF
<i>Diastylis rathkei</i>				< 1	< 1	< 1	FF/SDF
<i>Ehtonodiastylis nimia</i>				< 1	< 1	< 1	FF/SDF
<i>Leptostylis</i> spp.				1.7	< 1	< 1	FF/SDF
Leuconidae	< 1	< 1	< 1	< 1	< 1	< 1	FF/SDF
<i>Eudorella</i> sp.	< 1	< 1	< 1	< 1	< 1	< 1	FF/SDF
<i>Eudorellopsis deformis</i>	< 1	< 1	< 1				FF/SDF
<i>Eudorellopsis integra</i>	45.4	7.2	4.9				FF/SDF
<i>Eudorellopsis</i> spp.	1.9	< 1	< 1				FF/SDF
<i>Leucon</i> spp.	< 1	< 1	< 1	1.1	< 1	< 1	FF/SDF

(Continued)

Table 3. (Continued)

Taxa	North Water			Lancaster Sound			Feeding guild
	Density (%)	C biomass (%)	N biomass (%)	Density (%)	C biomass (%)	N biomass (%)	
<b>Isopoda</b>							
Desmosomatidae	1.6	< 1	< 1	< 1	< 1	< 1	
<i>Desmosoma</i> sp.	< 1	< 1	< 1				SSDF
<i>Eugerda</i> sp.	< 1	< 1	< 1				SSDF
<b>Tanaidacea</b>							
Akanthophoreidae	< 1	< 1	< 1				
<i>Leptognathia</i> sp.	< 1	< 1	< 1				FF/SDF
Pseudotanaididae	< 1	< 1	< 1				
Sphyrapodidae	< 1	< 1	< 1				
<i>Pseudosphyrapus</i> sp.	1.8	< 1	< 1				P/S
<b>Polychaeta total</b>	<b>35.3</b>	<b>71.9</b>	<b>74.0</b>	<b>42.7</b>	<b>86.4</b>	<b>88.2</b>	
unidentified fragments		14.8	13.8		12.9	13.0	
Acrocirridae				< 1	< 1	< 1	FF/SDF
Ampharetidae				1.1	6.5	5.7	SDF
<i>Ampharete</i> sp.	< 1	< 1	< 1	< 1	< 1	< 1	SDF
Capitellidae	< 1	< 1	< 1	< 1	< 1	< 1	
<i>Spiochaetopterus (typicus?)</i>				< 1	< 1	< 1	FF/SDF
Cirratulidae	2.4	3.9	3.8				
<i>Chaetozone</i> spp.	3.7	9.0	8.0	< 1	< 1	< 1	FF/SDF
<i>Cossura pygodactylata</i>	< 1	< 1	< 1				SSDF
<i>Cossura</i> spp.	8.7	2.6	1.0	< 1	< 1	< 1	SSDF
Flabelligeridae				< 1	< 1	< 1	
<i>Pherusa</i> sp.				< 1	< 1	< 1	FF/SDF
Lumbrineridae	0.0	1.3	1.4	< 1	1.4	1.5	P/S
<i>Abyssoninoe hibernica</i>				< 1	< 1	< 1	P/S
<i>Abyssoninoe</i> spp.				< 1	< 1	< 1	P/S
<i>Lumbrineris mixochaeta</i>	< 1	< 1	< 1	< 1	< 1	< 1	P/S
<i>Scoletoma fragilis</i>	< 1	< 1	< 1				P/S
<i>Scoletoma</i> spp.	< 1	1.1	1.1	< 1	< 1	< 1	P/S
Maldanidae	0.0	16.2	21.1	3.4	6.5	6.4	
<i>Asychis</i> spp.				2.3	5.3	5.1	SSDF
<i>Clymenura polaris</i>	< 1	< 1	< 1				FF
<i>Maldane arctica</i>				< 1	< 1	< 1	SSDF
<i>Maldane sarsi</i>				1.1	1.0	< 1	SSDF
<i>Maldane</i> spp.				1.5	1.2	1.2	SSDF
Nephtyidae	< 1	< 1	< 1	< 1	< 1	< 1	P/S
<i>Aglaophamus malmgreni</i>				1.1	10.3	11.1	P/S
<i>Aglaophamus</i> sp.				< 1	15.3	16.6	P/S
<i>Bipalponephtys neotena</i>	< 1	< 1	< 1				P/S
<i>Micronephthys minuta</i>	< 1	< 1	< 1				P/S
<i>Micronephthys</i> sp.	< 1	< 1	< 1				P/S
<i>Nephtys</i> sp.				< 1	< 1	< 1	P/S
<i>Nereis</i> sp.				< 1	< 1	< 1	P/S
Opheliidae				< 1	< 1	< 1	
<i>Ophelina cylindricaudata</i>	< 1	< 1	< 1				SSDF
<i>Scoloplos group armiger</i>	< 1	< 1	< 1	< 1	< 1	< 1	SSDF

(Continued)

Table 3. (Continued)

Taxa	North Water			Lancaster Sound			Feeding guild
	Density (%)	C biomass (%)	N biomass (%)	Density (%)	C biomass (%)	N biomass (%)	
Oweniidae	< 1	< 1	< 1				
Paraonidae	< 1	< 1	< 1				
<i>Aricidea nolani</i>	< 1	< 1	< 1				SDF
<i>Aricidea</i> spp.	< 1	< 1	< 1				SDF
<i>Eteone</i> sp.	< 1	< 1	< 1				P/S
Sabellidae				< 1	< 1	< 1	
<i>Chone</i> spp.				< 1	< 1	< 1	FF
<i>Euchone incolor</i>	< 1	< 1	< 1				FF
<i>Euchone</i> spp.	< 1	< 1	< 1				FF
Sphaerodoridae				< 1	< 1	< 1	
<i>Sphaerodoridium minutum</i>				< 1	< 1	< 1	SSDF
<i>Sphaerodoropsis</i> spp.				< 1	< 1	< 1	SSDF
<i>Sphaerodorum</i> spp.				< 1	< 1	< 1	SSDF
Spionidae	< 1	1.6	1.7	1.3	7.3	7.5	
<i>Prionospio cirrifera</i>	7.9	8.8	8.8	12.6	9.4	9.6	FF/SDF
<i>Prionospio</i> sp.	4.2	5.2	5.3	8.2	3.8	3.9	FF/SDF
Syllidae				< 1	< 1	< 1	
<i>Anguillosyllis</i> spp.				< 1	< 1	< 1	SDF
<i>Streptospinigera niuqtuut</i>				< 1	< 1	< 1	
<i>Syllides</i> sp.	< 1	< 1	< 1				P/S
Terebellidae		3.9	4.6	< 1	< 1	< 1	

Feeding guild determinations are as follows: P/S = predator/scavenger, SDF = surface deposit feeder, SSDF = subsurface deposit feeder, FF/SDF = facultative filter/surface deposit feeder, FF = obligate filter feeder.

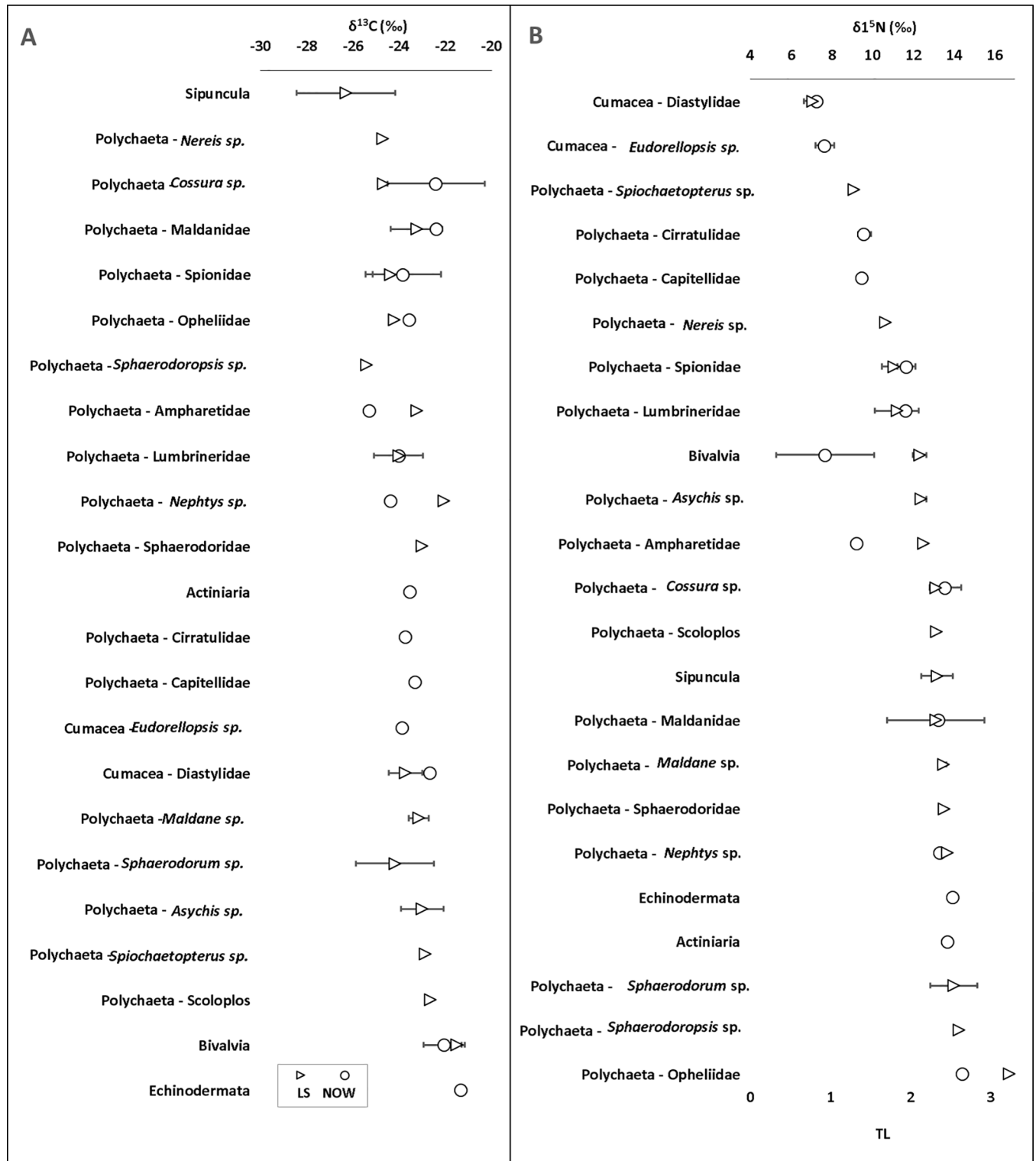
<https://doi.org/10.1371/journal.pone.0183034.t003>

### Community composition–biomass

In terms of C and N biomass, polychaetes were the dominant taxa in both NOW and LS, as they contributed over 70% and 80% to the total community biomass (Table 3). The significance of crustaceans and bivalves decreased when biomass is considered, largely due to their small size compared to polychaetes. Again *Prionospio cirrifera* contributing ~ 9% to the total community biomass at the NOW and LS. Additionally, larger polychaete groups, such as mal-danids, nephtyids and cirratulids contributed significantly to the overall macroinfaunal biomass.

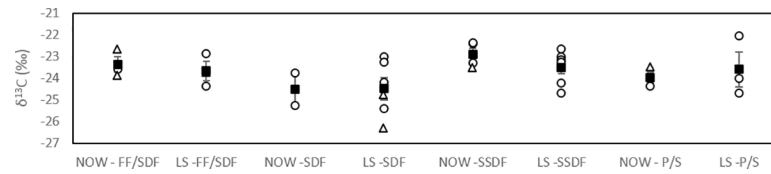
### Macroinfauna resource utilisation

The average macroinfaunal  $\delta^{13}\text{C}$  signatures in NOW and LS were  $-23.4 \pm 1.0\text{‰}$  (range:  $-25.3\text{‰}$  to  $-21.3\text{‰}$ ) and  $-23.7 \pm 1.2\text{‰}$  (range:  $-26.3\text{‰}$  to  $-21.5\text{‰}$ ), respectively (Fig 2A). The average feeding guild  $\delta^{13}\text{C}$  signatures (Fig 3) were not significantly different between the stations ( $F = 0.023$ ,  $df = 1$ ,  $p = 0.880$ ) or feeding guild ( $F = 3.254$ ,  $df = 2$ ,  $p = 0.062$ ), nor was a significant interaction between the two overserved ( $F = 0.453$ ,  $df = 2$ ,  $p = 0.643$ ). The proportion of pelagic POM in the diets of most consumers in NOW was high, but *Cossura* sp. and Cirratulidae polychaetes as well as bivalves have a more even contribution ice algae and phytoplankton in their diets (S1 Table). Similarly, in LS, a high proportion of pelagic POM was found in the diets of most taxa, but also an evenly mixed diet of ice algae and POM is seen in 5 polychaete taxa and



**Fig 2.** Average A)  $\delta^{13}\text{C}$  and B)  $\delta^{15}\text{N}$  signatures ( $\pm$  SD) and trophic level (TL) determinations of benthic macroinfauna collected at the North Water Polynya (NOW) and Lancaster Sound (LS) sampling sites.

<https://doi.org/10.1371/journal.pone.0183034.g002>



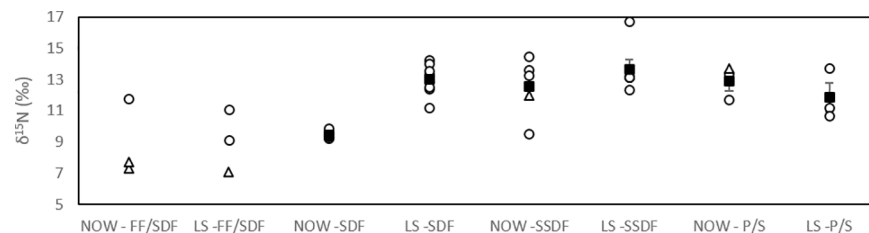
**Fig 3. Macroinfaunal feeding guild  $\delta^{13}\text{C}$  signatures in North Water Polynya (NOW) and Lancaster Sound (LS).** Individual taxa are marked with open symbols and feeding guild averages ( $\pm$  SE) with filled symbols. Circles represent polychaete groups and triangles other taxa. Every data point represents different taxa assigned to that feeding guild. P/S = predator/scavenger, SDF = surface deposit feeder, SSDF = subsurface deposit feeder, FF/SDF = facultative filter/surface deposit feeder, FF = obligate filter feeder.

<https://doi.org/10.1371/journal.pone.0183034.g003>

bivalves, especially in Spionidae polychaetes and bivalves where the contribution of ice algae was slightly higher than that of POM. Additionally, all feeding guilds at both stations had a high proportion of pelagic POM in their diets, with ranges between 0.591 (SDF in NOW) and 0.795 (SSDF in LS).

### Community trophic structure

The macroinfaunal  $\delta^{15}\text{N}$  values ranged from 7.3 to 14.4‰ in NOW and 7.0 to 16.7‰ in LS (Fig 2B). The faunal trophic levels were 1.0–2.8 (NOW) and 0.7–3.2 (LS) (Fig 2B), with an average TL of  $2.0 \pm 0.7$  in NOW and  $2.1 \pm 0.6$  in LS. The majority of the taxa were therefore secondary consumers. The differences in  $\delta^{15}\text{N}$  signatures of feeding guilds (Fig 4) were tested separately for each station due to the non-normal nature of the data residuals for SSDF in LS, which omitted the use of a Two-way ANOVA test. The statistical analysis revealed no significant difference in the signatures between feeding guilds in LS ( $X_2 = 1.308$ ,  $df = 2$ ,  $p = 0.520$ ) but in NOW there were significant differences ( $F = 16.226$ ,  $df = 2$ ,  $p = 0.012$ ). A Games-Howell post-hoc test showed that SDF signature was significantly lower than SSDF signature ( $p = 0.047$ ) and P/S signature ( $p = 0.047$ ). Additionally, a pairwise comparison of each feeding guild signature between the sites showed that the SDF signature in NOW was significantly lower than in LS ( $t = -8.527$ ,  $df = 7.996$ ,  $p < 0.001$ ). There were no differences between the sites in P/S ( $t = 0.964$ ,  $df = 3.430$ ,  $p = 0.398$ ) or SSDF ( $U = 14.000$ ,  $p = 0.931$ ) signatures. The NND, representation of trophic redundancy, of consumers at the NOW site was 2.78 and at LS it was 2.45. The calculated CDs, or trophic diversities, were 2.64 and 1.98 in NOW and LS, respectively.



**Fig 4. Macroinfaunal feeding guild  $\delta^{15}\text{N}$  signatures in North Water Polynya (NOW) and Lancaster Sound (LS).** Individual taxa are marked with open symbols and feeding guild averages ( $\pm$  SE) with filled symbols. Circles represent polychaete groups and triangles other taxa. Every data point represents different taxa assigned to this feeding guild. P/S = predator/scavenger, SDF = surface deposit feeder, SSDF = subsurface deposit feeder, FF/SDF = facultative filter/surface deposit feeder, FF = obligate filter feeder. For FF/SDF the average is not shown to illustrate the switching between feeding modes depending on the taxa.

<https://doi.org/10.1371/journal.pone.0183034.g004>

## Discussion

### Macroinfaunal density and biomass

Due to the known correlation between surface water productivity and benthic community abundance and biomass [100], we originally hypothesised that the benthic macroinfaunal density and biomass at the NOW sampling station, located in one of the most productive regions in the Arctic Ocean, would be higher than in the LS sampling station. This was proven correct on both accounts, but additionally the biomass and density recorded at the two stations illustrate that both sites are among the most significant Arctic benthic macroinfaunal community hotspots. Comparisons of macrofaunal biomass and density between studies is challenging due to the variety of sampling methods used (trawls, cores), mesh sizes used for sample sorting (usually a range of 250–1000  $\mu\text{m}$ ), differences in biomass reporting (wet mass, dry mass, C mass and conversion factors between them) and depths investigated. A switch from 400  $\mu\text{m}$  to 500  $\mu\text{m}$  mesh size can increase macrofauna density by 3% [101], so measurements of macrofaunal density should be compared with caution. Despite of this, the density of macroinfauna recorded at the NOW sampling station exceeds previous records for depths  $> 500$  m from the Arctic Ocean, and measurements from LS are close to the highest previous measurements ([102,103], and references therein). For LS and north-western Baffin Bay, previous measurements using a 1 mm mesh size sieve suggested density of 857 and 1222 ind  $\text{m}^{-2}$  for depths  $> 500$  m and 4564 and 5502 ind.  $\text{m}^{-2}$  for  $< 100$  m [24], which is less than reported here, but some of the discrepancy is likely due to differences in sampling methodology. Macrofaunal biomass in the Arctic at  $> 500$  m water depth is usually  $< 500$  mg C  $\text{m}^{-2}$  [100,104–109]. Some exceptions do exist, notably  $> 2800$  mg C  $\text{m}^{-2}$  reported at depths of 2950 m in Nansen Basin [106], whereas in north western Baffin Bay, close to our sampling sites, an average biomass of  $> 1500$  mg C  $\text{m}^{-2}$  at depths of 751–1100 m was recorded [24]. The biomasses measured in NOW and LS during this study are therefore higher than could be expected at depths  $> 500$  m, and the  $> 3000$  mg C  $\text{m}^{-2}$  recorded at NOW exceeds previous measurements in the Arctic deep sea. In comparison, Roy et al. [25] recorded the epibenthic megafaunal density and biomass at LS and NOW to be  $< 1$ –16 ind.  $\text{m}^{-2}$  and 250–1430 mg C  $\text{m}^{-2}$  (converted assuming C biomass is 5.6–6.3% of wet biomass [110,111]). The benthic macroinfaunal biomass thus clearly exceeds the megafaunal biomass at both sites, highlighting their dominance in forming the deep sea benthic communities.

Historically, LS benthic biomass has been considered among the highest recorded in the Arctic [24], but our results show that the macroinfaunal biomass in NOW is significantly higher still. Depth is generally the main variable controlling macrofaunal density and biomass locally [104–106,112,113], mainly due to its role as a proxy for food availability [114]. In the Canadian Arctic, water depth is however generally not a good indicator of benthic biomass, due to meso-scale processes enhancing the deep sea food supply at locations like polynyas [25]. Similarly to polynyas, marginal ice zones can enhance the local primary productivity and export of OM to the seafloor, whereas perennially ice covered regions and open sea areas support a lower benthic standing stock [103,115–117]. The sediment pigment concentration and C:N ratio, indicators of fresh labile OM input, are similarly significant predictors of benthic standing stock [3,21,22,118]. A low C:N ratio ( $< 7$ ) in surface sediments is a good indicator of deposition of ungrazed OM with a high nutritional value to the seafloor [21,118,119], and as the C:N ratio at both study sites was  $\sim 6.5$  at the time of sampling, the OM available to the benthos in NOW and LS was of high quality. Additionally in the Arctic, the length of the ice covered period is a good predictor of the benthic community biomass [36,120], as the longer open water period enables higher rates of primary production, and thus increased food availability to the benthos. In addition to the vast Bering shelf and Chukchi Sea green belts, NOW is the most productive single area in the Arctic [12], and the peak primary production rates in

NOW, as well as the Bering Strait, are comparable to the primary production in eutrophic temperate waters [14]. Less is known about the productivity patterns in LS, but the area is also considered to have eutrophic conditions and productivity is thought to be high [9,16,121]. Albeit limited in spatial extent, the examples from the two sampling sites here suggests that despite the water depth, the high local primary productivity in NOW and LS is well reflected in the benthic community standing stock, and the two sites are among the most significant macroinfaunal hotspots recorded in the Arctic.

## Macroinfaunal community structure

In the sediments of the Arctic Ocean, the macroinfaunal community composition is dominated by polychaetes, crustaceans and bivalves in terms of species numbers, biomass and density [24,104,112,113,118], and the two study sites here are no exception. A total of 21 polychaete families were identified from our two sampling stations, which appears high compared to previous studies from the Arctic. Piepenburg et al. [22] recorded 30 polychaete families from 40 stations in Northeast Water Polynya, Grebmeier et al. [5] reported 21 dominant families from 49 station in Bering and Chukchi Seas, and Coyle et al. [122] 41 families from 215 stations in Bering Sea shelf. A previous inventory of macrofauna in NOW found 26 families in total of 4 sampling sites [123]. It is therefore surprising that only 2 sampling stations accumulate 21 families, but shows that the sampling efforts here produced results that are comparable to previous efforts in the region [123]. It has previously been shown that dominant polychaete families generally consist of 1 to 2 species, and therefore family level identification can be considered sufficient for community analysis [5]. Indeed, we found the dominance of a single genus or species for the most dominant families. Especially abundant was the species *Prionospio cirrifera*, which accounted for 8–13% of the total macroinfaunal density in NOW and LS. The faunal community structure recorded in NOW during this study is very similar to that recorded by Lalande [123], who also found *Prionospio cirrifera* to be the dominant species alongside *Cossura longocirrata* and *Chaetozone setosa*, both common genera here too. Additionally *Thyasira* bivalves and *Eudorellopsis integra* cumaceans were common at both studies. The community here is thus very comparable to the previous records and shows very little change in the community structure over the past two decades.

The most noticeable difference between the NOW and LS community compositions was the dominance of bivalves in LS and crustaceans in NOW. High primary production combined with high current speeds in LS enables effective filter feeding, which has been thought to be the contributing factor to the high bivalve biomass and density in LS [24]. As the currents get weaker in northern Baffin Bay, the biomass of filter feeding bivalves decreases in favour of deposit feeding crustaceans. Cumaceans, which were very common in NOW, have not received much attention in benthic macrofaunal community descriptions, but have been documented as the dominant macrofauna in the Greenland [124] and Kara Seas [125], as well as being the dominant crustacean group in Northeast Water Polynya [126]. *Eudorellopsis integra* is the most abundant species in NOW in our study as well as one of the NOW stations sampled by Lalande [123]. Outside of this, only a few records of it exist for the Arctic [33,78,127]. This species however seems to be one of the most characteristic species in NOW. It is also noteworthy that despite the dominance of the two species, *E. integra* and *P. cirrifera*, the overall taxonomic richness remains high. Previous Arctic macrofaunal studies have generally observed low species richness at sites where abundant food supports high benthic standing stock (ie. dominance of a single or few species), whereas in more food limited stations the faunal abundance is low but taxonomic evenness higher [5,36,128]. Both sites here, however, appear to not only be hotspots for macroinfaunal density and biomass, but also for taxonomic richness.

Finally, regardless of taxonomic composition, the macrofaunal density and biomass at both sites was dominated by facultative filter and surface deposit feeders. This is not surprising as facultative feeders generally tend to make up a large proportion of benthic faunal biomass throughout the Arctic sediments [5,56,129,130]. In this study, the three most dominant taxa overall, the polychaete *Prionospio cirrifera*, crustacean *Eudorellopsis integra* and the bivalve family Thyasiridae are all classified as FF/SDF. The dominance of selective FF/SDF may be a response to a varying quantity and type of OM the benthos receives, where refractory material is supplemented by sporadic pulses of large amounts of fresh food [56], and selectively feeding on available high quality food is an advantage in the highly seasonal environment.

## Macroinfaunal food sources

Bottom ice  $\delta^{13}\text{C}$  signatures recorded in NOW have previously been shown to be more enriched than those of pelagic POM, with a range of -14.5 to -17.7‰ for ice algae, and -22.0 to -27.6‰ for POM [39,70,94]. In LS the difference was smaller but still existent, with ice algae signature of -20.7‰, and pelagic POM values in the range of -21.6 to -24.9‰ [66,94]. The low macroinfaunal  $\delta^{13}\text{C}$  enrichments in LS and NOW are therefore in agreement with the previous POM measurements above, suggesting macrofaunal dependence on phytoplankton as the main food source at both sites. Additionally, all feeding guilds had similar  $\delta^{13}\text{C}$  signatures at both sites, indicating the diets of fauna collected were not feeding guild dependent. The utilisation of phytoplankton food was confirmed by the isotope mixing model for most taxa investigated, but additionally certain taxa, such as bivalves, utilised a mixed diet of both ice algae and phytoplankton at both sites. No taxa in NOW had a higher proportion of ice algae than phytoplankton in their diets, and only 2 (spionids and pooled bivalves) out of the 18 taxa exhibited a slightly higher ice algae dietary contribution in LS. Spionids and bivalves, however, had the opposite dietary contributions in NOW, illustrating how the fauna can change their diet as a response to changing environmental conditions. Similar environmentally driven dietary plasticity has also been reported for other Arctic benthic species [26,131], suggesting that dietary flexibility is common for Arctic benthic fauna. Interestingly, several studies on shallow [48–50,132] and deep sea [56,57] sediment communities have concluded, based on the highly enriched consumer  $\delta^{13}\text{C}$  signatures, that the Arctic benthic macrofauna mainly utilise OM degraded by bacteria as their main food source. In this study, the consumer signatures were not unusually enriched compared to the proposed C sources, suggesting degraded material was not the main source of food for the fauna at LS and NOW. This probably reflects the high export of fresh OM to the seafloor in the polynya sites, as macrobenthos at eutrophic sites tend to rely on fresh OM more compared to their counterparts in less productive waters [47,63]. Additionally, contrary to our findings that show macrobenthos mainly feed on phytoplankton, studies looking at the megabenthic C sources in NOW and LS have suggested that ice algae are a major food item for the larger invertebrates [39,94]. This discrepancy is possibly related to the physical limitations of the two size classes: large megafauna with great mobility are able to reach patchy aggregations of ice algae falling on the seafloor [112,133], whereas macroinfauna with limited mobility are more restricted to food in their immediate vicinity. Indeed, Boetius et al. [134] observed megafauna exploiting ice algal aggregations on the Arctic deep sea floor, whereas macrofauna did not utilise the food patches. A real difference in the resource utilisation of the two faunal size classes may therefore exist, and as macrofauna appear less dependent on the ice algal food than the larger consumers, they may be less vulnerable to future changes in the food supply.

It should be noted, however, that the sampling for this study was conducted during the summer open water season. Despite isotope analysis being useful in determining especially the



long term resource utilisation, compared to the snapshot traditional stomach content analysis provides [66], some seasonal bias might impact the results. Kaufman et al. [38] experimentally illustrated that it can take up to 4 weeks for the diet switch from isotopically heavy ice algae to lighter phytoplankton to be reflected in the tissues of the sympagic amphipod *Onisimus littoralis* during the Arctic spring. The switch from lighter to heavier isotope signature occurs more slowly. While the tissue  $\delta^{13}\text{C}$  turnover times of most fauna have not been investigated in detail, making it difficult to estimate how long it takes for dietary changes to be reflected in the consumer signatures, previous seasonal studies show that the isotopic signature of the main food source of benthos persists in the consumer tissues throughout the year [58]. Therefore, it is unlikely that the overall contribution of ice algae to the consumer diets would be greatly underestimated in this study.

## Trophic interactions

Some effort has been made to construct the entire marine food web in NOW [39,70] and LS [66], but where benthos were included, they were mainly represented by megafaunal taxa, which reached TL 3.6–3.8 [39,66]. Dominant macrofaunal groups such as polychaetes were nearly completely neglected. The present study thus provides the first account of the benthic macroinfaunal food web at NOW and LS. Our original hypothesis was that the lower OM flux in LS would result in a larger reliance on reworked OM for food, and consequently the consumers would occupy higher trophic levels compared to the consumers in NOW. Indeed, in LS the food web was longer than in NOW, with 3.2 and 2.8 TLs, respectively. The food webs at both sites are however shorter than what most other studies have found: where both mega- and macrofaunal taxa were included, 4 TLs have been reported in Beaufort Sea [53,96,98], Chukchi Sea [67] and Svalbard Archipelago [55,58]. Also the megafaunal [23,94] and macrofaunal [56] food webs alone have been shown to involve 4 TLs, whereas in the extremely food limited HAUSGARTEN deep sea observatory up to 5 TLs were found with both faunal size classes included [57]. Simple food webs are found at sites with abundant fresh food and tight benthic-pelagic coupling [96], but benthic food webs consisting of 2–3 trophic levels, like in this study, are rare in the Arctic and have mainly been found in productive polynyas [39,63,66]. High abundance of fresh food also explains why many of the taxa in this study belong to TL 1. Additionally, Diastylidae cumaceans in LS has such a low  $\delta^{15}\text{N}$  signature, that the group was assigned TL 0.6 and in general all cumaceans had  $\text{TL} \leq 1.1$ . This finding is remarkably consistent with other studies that have also found the trophic position of this family to be very low, close to or below the food source baseline TL of 1 [56–58,96]. This is generally credited to use of extremely fresh OM with low  $\delta^{15}\text{N}$  signature [56], fractionates the isotopes differently than other taxa [58] and/or the high exoskeleton-tissue ratio can underestimate the trophic levels during analysis [135].

The distribution of taxa along the trophic continuum was also different between the sites. Knowing how many taxa place in each trophic level is a useful metric for investigating food web structure, as the relative proportion of taxa on low trophic levels (ie. primary consumers) reflects the tightness of coupling between the pelagic food source and benthic consumers [47]. In NOW, the direct utilisation of pelagic OM resulted in an even number of taxa on TL1 and TL2, with 6 and 8 taxa identified as each. In LS, only 4 taxa placed in TL1, whereas 12 belonged to TL2 and one to TL3. While all taxa at both sites seem to utilise fresh food, as indicated by a relatively simple food web, the relative dominance of higher consumers at LS indicates a looser benthic-pelagic coupling, and some utilisation of recycled OM for food. The food limitation is however not as dramatic compared to the deep Canada Basin, where majority of the consumers clustered on the third and fourth TL due to high utilisation of reworked OM [56].

Additionally, the trophic diversity and redundancy analyses suggest that the higher abundance of fresh food at NOW promotes more selective and specialised feeding compared to LS. The community trophic diversity was higher at NOW than in LS, indicating a clearer overall trophic niche separation within the benthic community [95]. Consequently, the trophic redundancy in LS was higher, as most consumers appear to be generalist feeders utilising a higher proportion of recycled OM, compared to more selective feeders in NOW. Although most taxa found at both sites generally had similar  $\delta^{15}\text{N}$  signatures, indicating a similar trophic position, certain taxa were notable exceptions that illustrate the differences suggested by the trophic structure parameter calculations. For instance, the  $\delta^{15}\text{N}$  signature of the surface deposit feeding polychaete family Ampharetidae is 9.2‰ (or TL 1.5) in NOW and 12.5‰ (or TL 2.1) in LS. Similarly, the SSDF polychaete family Opheliidae showed a difference in the signatures, with 14.4‰ (TL 2.8) and 16.7‰ (TL 3.2) in NOW and LS, respectively. This difference in the  $\delta^{15}\text{N}$  signatures suggests selective feeding of fresh algae in NOW and a greater reliance on reworked OM matter in LS [56,136]. The most interesting discrepancy between the sites is however observed in the signatures of bivalves. In NOW the average  $\delta^{15}\text{N}$  signature of bivalves was 7.7‰ (TL 1.1) and in LS it was 12.3‰ (TL 2.1), indicating that in NOW they are mainly primary consumers and in LS they occupy a higher trophic level. Due to the juvenile state of some of the bivalves collected, the individuals were extremely small and samples from different families had to be pooled together to ensure sufficient biomass for isotope analysis, especially in NOW where bivalves were rare. Therefore, the taxonomic resolution in NOW is low. Most of the bivalves in LS were however members of the family Thyasiridae, which are classified as FF/SDF. For Arctic deep sea benthos the enrichment generally differs between feeding guilds, with the  $\delta^{15}\text{N}$  signatures of deposit feeders < suspension feeders < predator/scavengers [57]. Therefore the bivalve community in NOW probably mainly consist of deposit feeders, whereas the facultative FF/SDF bivalves in LS seem to utilise more filtering, probably as a response to elevated current speed, which promotes filter feeding at the site [24]. The different environmental conditions could therefore influence the trophic positions of the bivalves at the two sites.

Other studies on Arctic benthos have found that the consumer  $\delta^{15}\text{N}$  signatures were in general agreement with their assumed feeding behaviour [57,63], but here the faunal tissue  $\delta^{15}\text{N}$  signatures did not always reflect their feeding guild determination. In LS, the  $\delta^{15}\text{N}$  signatures of different feeding guilds could not be statistically distinguished from each other, and highest signatures were found in SSDF Opheliidae, P/S Nephtyidae and SDF Sphaerodoridae polychaetes. In NOW the signatures of SDF were lower than those of SSDF and P/S, which suggests that the abundant fresh OM maintains a more traditional separation of trophic positions of different feeding guilds, as was also shown by the increased trophic diversity at this site. Indeed, the SDF in NOW have significantly lower signatures than in LS, further highlighting the differences between the sites. In terms of individual taxa, the  $\delta^{15}\text{N}$  signatures sometimes contradicted the original trophic position assumptions. Most notably, some animals generally classified as predator-scavengers had lower than expected  $\delta^{15}\text{N}$  signatures. *Nereis* sp. polychaetes in LS occupied trophic level 1.6, and members of the family Lumbrineridae placed on TL1.8 (LS) and 2.1 (NOW). Especially under food limitation, the lumbrinerids can be considered facultative predators that can occasionally engage in deposit feeding [129], which could explain the fairly low  $\delta^{15}\text{N}$  signatures. On the other hand, the signatures of opheliids were surprisingly high. Previous fatty acid content analysis has revealed a high amount of zooplankton biomarker 20:1(n-11) in Opheliidae individuals [137]. This has previously been attributed to ingestion of deep sea copepod remains [137,138] and is therefore evidence of a omnivorous/carnivorous diet (Drazen et al. 2008b), even though the family is generally regarded as SSDF. This could therefore explain the high enrichment of opheliids found in this study, especially as

more zooplankton remains and faeces is included in the sinking POM later in the summer [69]. The isotopic signatures therefore revealed more detailed site specific information on the actual trophic position of these taxa, compared to their feeding guild designations. Some of the assumptions on feeding methods of the deep sea benthic fauna might thus need to be called into question, as switching between feeding modes and flexible trophic positions seem common [139]. This study suggests that the Arctic benthic ecosystems thrive by generalist feeding on the available food items, and sites with high OM flux to the seafloor can have simpler food webs than would otherwise be expected. It should however be noted that methodological constraints of stable isotope analysis related to sampling timing are inevitably reflected in the current results, and an experimental approach directly comparing ice algae and phytoplankton uptake rates by benthos would ultimately establish faunal dependence on different types of OM.

## Conclusion

This study shows that both North Water Polynya and Lancaster Sound Polynya are among the most significant benthic macrofaunal hotspots in the Arctic Ocean, where the macrofaunal communities thrive on a diet consisting mainly of phytoplankton food, opportunistically supplemented with ice algae. Contrary to the concerns that a switch from ice algae to phytoplankton diet would reduce the quality of food available to benthos, the high phytoplankton production in both polynyas has led to an increased macrofaunal utilisation of fresh, high quality food, compared to other Arctic regions where macrofaunal diets mainly consist of refractory OM even at shallow depths. Differences in the total amount of food available was however reflected in the community trophic structure: the higher OM flux in NOW resulted in a shorter food web, with an even number of consumers placing on TL 1 and TL2. The different feeding guilds were also distinguishable by their  $\delta^{15}\text{N}$  signatures, showing that the abundant food allowed for selective feeding, maintaining trophic niche separation. In LS, the food web was longer, and the community had a larger proportion of higher consumers. Most fauna appeared to be facultative feeders, which resulted in lower trophic diversity compared to NOW. Based on the results here, the overall increase in phytoplankton primary production in the future could support highly abundant benthic macrofaunal communities, and sites receiving less OM can establish thriving communities through facultative feeding and efficient recycling of OM within complex food webs. As the creation of such biological hotspots is facilitated by the elongated open water period, it is not beyond reason to suggest that Arctic benthic communities could benefit from the future changes in ice regime and the consequent shift from ice algae to phytoplankton system.

## Supporting information

**S1 Table. The relative contribution of pelagic POM (a proxy for phytoplankton) and ice algae in macrofaunal taxa and feeding guild diets based on tissue  $\delta^{13}\text{C}$  and  $\delta^{15}\text{N}$  measurements in North Water Polynya (NOW) and Lancaster Sound (LS) obtained using SIAR model. P/S = predator/scavenger, SSDF = subsurface deposit feeder, SDF = surface deposit feeder. (DOCX)**

## Acknowledgments

We would like to thank the officers and crew of CCGS Amundsen and ArcticNet scientific and technical personnel for support on board. We would also like to thank C. Grant (ISMER) and

G. Kazanidis (University of Aberdeen) for field assistance, ArcticNet 2013 cruise CTD operators, N. Friscourt (ISMER) for the trophic diversity and redundancy analysis, L. Tréau de Coeli and L. de Montety (ISMER) for macrofauna identification help and L. de Montety for sediment organic matter content analysis. Additional thanks go to M. Lavoie (ISMER) for sediment pigment analysis, K. Chalut (ISMER) for help with sample preparation and V. Johnston (University of Aberdeen) for general lab assistance.

## Author Contributions

**Conceptualization:** UW PA.

**Data curation:** PA.

**Formal analysis:** AM.

**Funding acquisition:** UW PA.

**Investigation:** AM.

**Methodology:** UW.

**Project administration:** UW PA AM.

**Resources:** UW PA.

**Supervision:** UW PA.

**Visualization:** AM UW PA.

**Writing – original draft:** AM.

**Writing – review & editing:** AM UW PA.

## References

1. Overland JE, Wang M. When will the summer Arctic be nearly sea ice free? *Geophys Res Lett.* 2013; 40: 2097–2101. <https://doi.org/10.1002/grl.50316>
2. Leu E, Mundy CJ, Assmy P, Campbell K, Gabrielsen TM, Gosselin M, et al. Arctic spring awakening—Steering principles behind the phenology of vernal ice algal blooms. *Prog Oceanogr.* 2015; 139: 151–170. <https://doi.org/10.1016/j.pocean.2015.07.012>
3. Ambrose WG Jr., Renaud PE. Benthic response to water column productivity patterns: Evidence for benthic-pelagic coupling in the Northeast Water Polynya. *J Geophys Res.* 1995; 100: 4411–4421.
4. Piepenburg D. Recent research on Arctic benthos: Common notions need to be revised. *Polar Biol.* 2005; 28: 733–755. <https://doi.org/10.1007/s00300-005-0013-5>
5. Grebmeier JM, Feder HM, McRoy C. Pelagic-benthic coupling on the shelf of the northern Bering and Chukchi Seas. II Benthic community structure. *Mar Ecol Prog Ser.* 1989; 51: 253–268. <https://doi.org/10.3354/meps053079>
6. Søreide JE, Leu E, Berge J, Graeve M, Falk-Petersen S. Timing of blooms, algal food quality and Calanus glacialis reproduction and growth in a changing Arctic. *Glob Chang Biol.* 2010; 16: 3154–3163. <https://doi.org/10.1111/j.1365-2486.2010.02175.x>
7. Leu E, Søreide JE, Hessen DO, Falk-Petersen S, Berge J. Consequences of changing sea-ice cover for primary and secondary producers in the European Arctic shelf seas: Timing, quantity, and quality. *Prog Oceanogr.* 2011; 90: 18–32. <https://doi.org/10.1016/j.pocean.2011.02.004>
8. Arrigo KR, van Dijken GL, Pabi S. Impact of a shrinking Arctic ice cover on marine primary production. *Geophys Res Lett.* 2008; 35: L19603. <https://doi.org/10.1029/2008GL035028>
9. Bélanger S, Babin M, Tremblay J-É. Increasing cloudiness in Arctic damps the increase in phytoplankton primary production due to sea ice receding. *Biogeosciences.* 2013; 9: 13987–14012. <https://doi.org/10.5194/bgd-9-13987-2012>
10. Slagstad D, Wassmann PFJ, Ellingsen I. Physical constrains and productivity in the future Arctic Ocean. *Front Mar Sci.* 2015; 2: 1–23. <https://doi.org/10.3389/fmars.2015.00085>

11. Pabi S, van Dijken GL, Arrigo KR. Primary production in the Arctic Ocean, 1998–2006. *J Geophys Res Ocean*. 2008; 113: 1–22. <https://doi.org/10.1029/2007JC004578>
12. Sakshaug E. Primary and secondary production in the Arctic Seas. In: Stein R, Macdonald RW, editors. *The Organic Carbon Cycle in the Arctic Ocean*. Berlin: Springer; 2004. pp. 57–81. <https://doi.org/10.1007/978-3-642-18912-8>
13. Stirling I. The Biological Importance of Polynyas in the Canadian Arctic. *Arctic*. 1980; 33: 303–315.
14. Klein B, LeBlanc B, Mei Z-P, Beret R, Michaud J, Mundy C-J, et al. Phytoplankton biomass, production and potential export in the North Water. *Deep Res Part II Top Stud Oceanogr*. 2002; 49: 4983–5002. [https://doi.org/10.1016/S0967-0645\(02\)00174-1](https://doi.org/10.1016/S0967-0645(02)00174-1)
15. Kröncke I, Vanreusel A, Vincx M, Wollenburg J, Mackensen A, Liebezeit G, et al. Different benthic size-compartments and their relationship to sediment chemistry in the deep Eurasian Arctic Ocean. *Mar Ecol Prog Ser*. 2000; 199: 31–41. <https://doi.org/10.3354/meps199031>
16. Ardyna M, Gosselin M, Michel C, Poulin M, Tremblay J-É. Environmental forcing of phytoplankton community structure and function in the Canadian High Arctic: Contrasting oligotrophic and eutrophic regions. *Mar Ecol Prog Ser*. 2011; 442: 37–57. <https://doi.org/10.3354/meps09378>
17. Tremblay J-É, Gratton Y, Fauchot J, Price NM. Climatic and oceanic forcing of new, net, and diatom production in the North Water. *Deep Res Part II Top Stud Oceanogr*. 2002; 49: 4927–4946. [https://doi.org/10.1016/S0967-0645\(02\)00171-6](https://doi.org/10.1016/S0967-0645(02)00171-6)
18. Harada N. Review: Potential catastrophic reduction of sea ice in the western Arctic Ocean: Its impact on biogeochemical cycles and marine ecosystems. *Glob Planet Change*. 2016; 136: 1–17. <https://doi.org/10.1016/j.gloplacha.2015.11.005>
19. Wassmann P, Peinert R, Smetacek V. Patterns of production and sedimentation in the boreal and polar Northeast Atlantic. *Polar Res*. 1991; 10: 209–228. <https://doi.org/10.1111/j.1751-8369.1991.tb00647.x>
20. Lalande C, Forest A, Barber DG, Gratton Y, Fortier L. Variability in the annual cycle of vertical particulate organic carbon export on Arctic shelves: Contrasting the Laptev Sea, Northern Baffin Bay and the Beaufort Sea. *Cont Shelf Res*. 2009; 29: 2157–2165. <https://doi.org/10.1016/j.csr.2009.08.009>
21. Grebmeier JM, McRoy C, Feder HM. Pelagic-benthic coupling on the shelf of the northern Bering and Chukchi Seas. I. Food supply source and benthic biomass. *Mar Ecol Prog Ser*. 1988; 48: 57–67.
22. Piepenburg D, Ambrose WG Jr., Brandt A, Renaud PE, Ahrens MJ, Jensen P. Benthic community patterns reflect water column processes in the Northeast Water Polynya (Greenland). *J Mar Syst*. 1997; 10: 467–482. [https://doi.org/10.1016/S0924-7963\(96\)00050-4](https://doi.org/10.1016/S0924-7963(96)00050-4)
23. Tamelander T, Renaud PE, Hop H, Carroll ML, Ambrose WG Jr., Hobson KA. Trophic relationships and pelagic-benthic coupling during summer in the Barents Sea Marginal Ice Zone, revealed by stable carbon and nitrogen isotope measurements. *Mar Ecol Prog Ser*. 2006; 310: 33–46. <https://doi.org/10.3354/meps310033>
24. Thomson DH. Marine benthos in the eastern Canadian High Arctic: Multivariate analyses of standing crop and community structure. *Arctic*. 1982; 35: 61–74. [https://doi.org/10.1016/0198-0254\(82\)90310-7](https://doi.org/10.1016/0198-0254(82)90310-7)
25. Roy V, Iken K, Archambault P. Environmental drivers of the Canadian Arctic megabenthic communities. *PLoS One*. 2014; 9: e100900. <https://doi.org/10.1371/journal.pone.0100900> PMID: 25019385
26. Gaillard B, Meziane T, Tremblay R, Archambault P, Layton KKS, Martel AL, et al. Dietary tracers in *Bathycorca glacialis* from contrasting trophic regions in the Canadian Arctic. *Mar Ecol Prog Ser*. 2015; 536: 175–186. <https://doi.org/10.3354/meps11424>
27. Piepenburg D, Archambault P, Ambrose WG Jr., Blanchard AL, Bluhm BA, Carroll ML, et al. Towards a pan-Arctic inventory of the species diversity of the macro- and megabenthic fauna of the Arctic shelf seas. *Mar Biodivers*. 2011; 41: 51–70. <https://doi.org/10.1007/s12526-010-0059-7>
28. Piepenburg D, Blackburn TH, VonDorrien CF, Gutt J, Hall PO, Hulth S, et al. Partitioning of benthic community respiration in the Arctic (northwestern Barents Sea). *Mar Ecol Prog Ser*. 1995; 118: 199–214. <https://doi.org/10.3354/meps118199>
29. Grant J, Hargrave BT, Macpherson P. Sediment properties and benthic–pelagic coupling in the North Water. *Deep Res Part II Top Stud Oceanogr*. 2002; 49: 5259–5275.
30. Renaud PE, Morata N, Ambrose WG Jr., Bowie JJ, Chiuchiolo A. Carbon cycling by seafloor communities on the eastern Beaufort Sea shelf. *J Exp Mar Bio Ecol*. 2007; 349: 248–260. <https://doi.org/10.1016/j.jembe.2007.05.021>
31. Deming JW, Fortier L, Fukuchi M. The International North Water Polynya Study (NOW): A brief overview. *Deep Res Part II Top Stud Oceanogr*. 2002; 49: 4887–4892. [https://doi.org/10.1016/S0967-0645\(02\)00168-6](https://doi.org/10.1016/S0967-0645(02)00168-6)

32. Grebmeier JM, Barry JP. Benthic Processes in Polynyas. In: Smith Jr. WO, Barber DG, editors. *Polynyas: Windows to the World*. Elsevier Oceanography Series; 2007. pp. 363–390. 10.1016/S0422-9894(06)74011-9
33. Link H, Piepenburg D, Archambault P. Are Hotspots Always Hotspots? The Relationship between Diversity, Resource and Ecosystem Functions in the Arctic. *PLoS One*. 2013; 8: 1–18. <https://doi.org/10.1371/journal.pone.0074077> PMID: 24040169
34. Link H, Archambault P, Tamelander T, Renaud PE, Piepenburg D. Spring-to-summer changes and regional variability of benthic processes in the western Canadian Arctic. *Polar Biol*. 2011; 34: 2025–2038. <https://doi.org/10.1007/s00300-011-1046-6>
35. Kenchington EL, Link H, Roy V, Archambault P, Siferd T, Treble M, et al. Identification of Mega- and Macrobenthic Ecologically and Biologically Significant Areas (EBSAs) in the Hudson Bay Complex, the Western and Eastern Canadian Arctic [Internet]. DFO Canadian Science Advisory Secretariat Research Document. 2011. p. vi+52 p. Available: [http://www.dfo-mpo.gc.ca/csas-sccs/Publications/ResDocs-%5Cnhttp://www.dfo-mpo.gc.ca/csas-sccs/Publications/ResDocs-DocRech/2011/2011\\_071-eng.html](http://www.dfo-mpo.gc.ca/csas-sccs/Publications/ResDocs-%5Cnhttp://www.dfo-mpo.gc.ca/csas-sccs/Publications/ResDocs-DocRech/2011/2011_071-eng.html)
36. Cochrane SKJ, Denisenko SG, Renaud PE, Emblow CS, Ambrose WG, Ellingsen IH, et al. Benthic macrofauna and productivity regimes in the Barents Sea—Ecological implications in a changing Arctic. *J Sea Res*. 2009; 61: 222–233. <https://doi.org/10.1016/j.seares.2009.01.003>
37. Lovvorn JR, North C, Kolts J, Grebmeier JM, Cooper L, Cui X. Projecting the effects of climate-driven changes in organic matter supply on benthic food webs in the northern Bering Sea. *Mar Ecol Prog Ser*. 2016; 548: 11–30. <https://doi.org/10.3354/meps11651>
38. Kaufman MR, Gradinger RR, Bluhm BA, O'Brien DM. Using stable isotopes to assess carbon and nitrogen turnover in the Arctic sympagic amphipod *Onisimus litoralis*. *Oecologia*. 2008; 158: 11–22. <https://doi.org/10.1007/s00442-008-1122-y> PMID: 18709389
39. Hobson KA, Fisk A, Karnovsky N, Holst M, Gagnon J-M, Fortier M. A stable isotope ( $\delta^{13}\text{C}$ ,  $\delta^{15}\text{N}$ ) model model for the North Water food web: implications for evaluating trophodynamics and the ow of energy and contaminants. *Deep Res Part II Top Stud Oceanogr*. 2002; 49: 5131–5150.
40. Carey AG Jr. Particle flux beneath fast ice in the shallow southwestern Beaufort Sea, Arctic Ocean. *Mar Ecol Prog Ser*. 1987; 40: 247–257. <https://doi.org/10.3354/meps040247>
41. Sun MY, Clough LM, Carroll ML, Dai J, Ambrose WG, Lopez GR. Different responses of two common Arctic macrobenthic species (*Macoma balthica* and *Monoporeia affinis*) to phytoplankton and ice algae: Will climate change impacts be species specific? *J Exp Mar Bio Ecol*. 2009; 376: 110–121. <https://doi.org/10.1016/j.jembe.2009.06.018>
42. McMahon KW, Ambrose WG Jr., Johnson BJ, Sun M-Y, Lopez GR, Clough LM, et al. Benthic community responses to ice algae and phytoplankton in Ny Ålesund, Svalbard. *Mar Ecol Prog Ser*. 2006; 310: 1–14. <https://doi.org/10.3354/meps310001>
43. Falk-Petersen S, Sargent JR, Henderson J, Hegseth EN, Hop H, Okolodkov YB. Lipids and fatty acids in ice algae and phytoplankton from the Marginal Ice Zone in the Barents Sea. *Polar Biol*. 1998; 20: 41–47. <https://doi.org/10.1007/s0030000050274>
44. Duerksen SW, Thiemann GW, Budge SM, Poulin M, Niemi A, Michel C. Large, omega-3 rich, pelagic diatoms under arctic sea ice: Sources and implications for food webs. *PLoS One*. 2014; 9: 1–18. <https://doi.org/10.1371/journal.pone.0114070> PMID: 25473949
45. Leu E, Falk-Petersen S, Kwaśniewski S, Wulff A, Edvardsen K, Hessen DO. Fatty acid dynamics during the spring bloom in a High Arctic fjord: importance of abiotic factors versus community changes. *Can J Fish Aquat Sci*. 2006; 63: 2760–2779. <https://doi.org/10.1139/f06-159>
46. Hudson IR, Pond DW, Billett DSM, Tyler PA, Lampitt RS, Wolff GA. Temporal variations in fatty acid composition of deep-sea holothurians: Evidence of benthic-pelagic coupling. *Mar Ecol Prog Ser*. 2004; 281: 109–120. <https://doi.org/10.3354/meps281109>
47. Iken K, Bluhm B, Dunton K. Benthic food-web structure under differing water mass properties in the southern Chukchi Sea. *Deep Res Part II Top Stud Oceanogr*. 2010; 57: 71–85. <https://doi.org/10.1016/j.dsr2.2009.08.007>
48. Lovvorn JR, Cooper LW, Brooks ML, De Ruyck CC, Bump JK, Grebmeier JM. Organic matter pathways to zooplankton and benthos under pack ice in late winter and open water in late summer in the north-central Bering Sea. *Mar Ecol Prog Ser*. 2005; 291: 135–150. <https://doi.org/10.3354/meps291135>
49. North CA, Lovvorn JR, Kolts JM, Brooks ML, Cooper LW, Grebmeier JM. Deposit-feeder diets in the Bering Sea: Potential effects of climatic loss of sea ice-related microalgal blooms. *Ecol Appl*. 2014; 24: 1525–1542. <https://doi.org/10.1890/13-0486.1>

50. McTigue ND, Dunton KH. Trophodynamics and organic matter assimilation pathways in the northeast Chukchi Sea, Alaska. *Deep Res Part II Top Stud Oceanogr.* 2014; 102: 84–96. <https://doi.org/10.1016/j.dsr2.2013.07.016>
51. Renaud PE, Løkken TS, Jørgensen LL, Berge J, Johnson BJ. Macroalgal detritus and food-web subsidies along an Arctic fjord depth-gradient. *Front Mar Sci.* 2015; 2: 1–15. <https://doi.org/10.3389/fmars.2015.00031>
52. Dunton KH, Schell DM. Dependence of consumers on macroalgal (*Laminaria solidungula*) carbon in an arctic kelp community:  $\delta^{13}\text{C}$  evidence. *Mar Biol.* 1987; 93: 615–625. <https://doi.org/10.1007/BF00392799>
53. Dunton KH, Schonberg S V., Cooper LW. Food Web Structure of the Alaskan Nearshore Shelf and Estuarine Lagoons of the Beaufort Sea. *Estuaries and Coasts.* 2012; 35: 416–435. <https://doi.org/10.1007/s12237-012-9475-1>
54. Feder HM, Iken K, Blanchard AL, Jewett SC, Schonberg S. Benthic food web structure in the south-eastern Chukchi Sea: An assessment using  $\delta^{13}\text{C}$  and  $\delta^{15}\text{N}$  analyses. *Polar Biol.* 2011; 34: 521–532. <https://doi.org/10.1007/s00300-010-0906-9>
55. Kędra M, Kuliński K, Walkusz W, Legeżyńska J. The shallow benthic food web structure in the high Arctic does not follow seasonal changes in the surrounding environment. *Estuar Coast Shelf Sci.* 2012; 114: 183–191. <https://doi.org/10.1016/j.ecss.2012.08.015>
56. Iken K, Bluhm BA, Gradinger R. Food web structure in the high Arctic Canada Basin: Evidence from  $\delta^{13}\text{C}$  and  $\delta^{15}\text{N}$  analysis. *Polar Biol.* 2005; 28: 238–249. <https://doi.org/10.1007/s00300-004-0669-2>
57. Bergmann M, Dannheim J, Bauerfeind E, Klages M. Trophic relationships along a bathymetric gradient at the deep-sea observatory HAUSGARTEN. *Deep Res Part I Oceanogr Res Pap.* 2009; 56: 408–424. <https://doi.org/10.1016/j.dsr.2008.10.004>
58. Renaud P, Tessmann M, Evensen A, Christensen G. Benthic food-web structure of an Arctic fjord (Kongsfjorden, Svalbard). *Mar Biol Res.* 2011; 7: 13–26. <https://doi.org/10.1080/17451001003671597>
59. Michener RH, Kaufmann L. Stable isotope ratios as tracers in marine food webs: An update. In: Michener RH, Lajtha K, editors. *Stable Isotopes in Ecology and Environmental Science.* 2nd ed. London: Blackwell; 2007. pp. 238–282. <https://doi.org/10.1002/9780470691854.ch9>
60. Post DM. Using stable isotopes to estimate trophic position: models, methods, and assumptions. *Ecology.* 2002; 83: 703–718. <https://doi.org/10.2307/3071875>
61. Vander Zanden MJ, Rasmussen JB. Variation in delta  $\delta^{15}\text{N}$  and  $\delta^{13}\text{C}$  trophic fractionation: Implications for aquatic food web studies. *Limnol Oceanogr.* 2001; 46: 2061–2066. <https://doi.org/10.4319/lo.2001.46.8.2061>
62. Deniro M, Epstein S. Influence of diet on the distribution of nitrogen isotopes in animals. *Geochim Cosmochim Acta.* 1981; 45: 341–351. [https://doi.org/10.1016/0016-7037\(81\)90244-1](https://doi.org/10.1016/0016-7037(81)90244-1)
63. Hobson KA, Ambrose WG Jr., Renaud PE. Sources of primary production, benthic-pelagic coupling, and trophic relationships within the Northeast Water Polynya: insights from  $\delta^{13}\text{C}$  and  $\delta^{15}\text{N}$  analysis. *Mar Ecol Prog Ser.* 1995; 128: 1–10. <https://doi.org/10.3354/meps128001>
64. Gradinger R. Sea-ice algae: Major contributors to primary production and algal biomass in the Chukchi and Beaufort Seas during May/June 2002. *Deep Res Part II Top Stud Oceanogr.* 2009; 56: 1201–1212. <https://doi.org/10.1016/j.dsr2.2008.10.016>
65. Parnell AC, Inger R, Bearhop S, Jackson AL. Source Partitioning Using Stable Isotopes: Coping with Too Much Variation. *PLoS One.* 2010; 5: e9672. <https://doi.org/10.1371/journal.pone.0009672> PMID: 20300637
66. Hobson KA, Welch HE. Determination of trophic relationships within a high Arctic marine food web using  $\delta^{13}\text{C}$  and  $\delta^{15}\text{N}$  analysis. *Mar Ecol Prog Ser.* 1992; 84: 9–18.
67. Tu KL, Blanchard AL, Iken K, Horstmann-Dehn L. Small-scale spatial variability in benthic food webs in the northeastern Chukchi Sea. *Mar Ecol Prog Ser.* 2015; 528: 19–37. <https://doi.org/10.3354/meps11216>
68. Welch HE, Bergmann MA, Siferd TD, Martin KA, Curtis MF, Crawford RE, et al. Energy flow through the marine ecosystem of the Lancaster South Region, Arctic Canada. *Arctic.* 1992; 45: 343–357.
69. Michel C, Gosselin M, Nozais C. Preferential sinking export of biogenic silica during the spring and summer in the North Water Polynya (northern Baffin Bay): Temperature or biological control? *J Geophys Res.* 2002; 107: 1–14. <https://doi.org/10.1029/2000JC000408>
70. Tremblay J-É, Hattori H, Michel C, Ringuette M, Mei ZP, Lovejoy C, et al. Trophic structure and pathways of biogenic carbon flow in the eastern North Water Polynya. *Prog Oceanogr.* 2006; 71: 402–425. <https://doi.org/10.1016/j.pocean.2006.10.006>

71. Lyn Lewis E, Ponton D, Legendre L, LeBlanc B. Springtime sensible heat, nutrients and phytoplankton in the Northwater Polynya, Canadian Arctic. *Cont Shelf Res.* 1996; 16: 1775–1792. [https://doi.org/10.1016/0278-4343\(96\)00015-5](https://doi.org/10.1016/0278-4343(96)00015-5)
72. Heide-Jørgensen MP, Burt LM, Hansen RG, Nielsen NH, Rasmussen M, Fossette S, et al. The Significance of the North Water Polynya to Arctic Top Predators. *Ambio.* 2013; 42: 596–610. <https://doi.org/10.1007/s13280-012-0357-3> PMID: 23271401
73. Roy V, Iken K, Archambault P. Regional Variability of Megabenthic Community Structure across the Canadian Arctic. *Arctic.* 2015; 68: 180–192.
74. Michel C, Ingram RG, Harris LR. Variability in oceanographic and ecological processes in the Canadian Arctic Archipelago. *Prog Oceanogr.* 2006; 71: 379–401. <https://doi.org/10.1016/j.pocean.2006.09.006>
75. Fanelli E, Cartes JE, Papiol V, Rumolo P, Sprovieri M. Effects of preservation on the  $\delta^{13}\text{C}$  and  $\delta^{15}\text{N}$  values of deep sea macrofauna. *J Exp Mar Bio Ecol.* Elsevier B.V.; 2010; 395: 93–97. <https://doi.org/10.1016/j.jembe.2010.08.020>
76. Riaux-Gobin C, Klein B. Microphytobenthic Biomass Measurement Using HPLC and Conventional Pigment Analysis. In: Kemp P, Sherr B, Sherr E, Cole J, editors. *Handbook of methods in aquatic microbial ecology.* Boca Raton: Lewis Publishers; 1993. pp. 369–376.
77. Fauchald K, Jumars P. The Diet of Worms: A study of polychaete feeding guilds. *Oceanogr Mar Biol an Anu Rev.* 1979; 17: 193–284.
78. WoRMS Editorial Board. World Register of Marine Species. In: [www.marinespecies.org](http://www.marinespecies.org) (accessed 19 Sep 2016) [Internet]. 2016 [cited 19 Sep 2016]. 10.14284/170
79. Yokoyama H, Tamaki A, Harada K, Shimoda K, Koyama K, Ishihi Y. Variability of diet-tissue isotopic fractionation in estuarine macrobenthos. *Mar Ecol Prog Ser.* 2005; 296: 115–128. <https://doi.org/10.3354/meps296115>
80. Mateo MA, Serrano O, Serrano L, Michener RH. Effects of sample preparation on stable isotope ratios of carbon and nitrogen in marine invertebrates: Implications for food web studies using stable isotopes. *Oecologia.* 2008; 157: 105–115. <https://doi.org/10.1007/s00442-008-1052-8> PMID: 18465146
81. Demopoulos AWJ, Fry B, Smith CR. Food web structure in exotic and native mangroves: A Hawaii-Puerto Rico comparison. *Oecologia.* 2007; 153: 675–686. <https://doi.org/10.1007/s00442-007-0751-x> PMID: 17587064
82. Gontikaki E, Mayor DJ, Narayanaswamy BE, Witte U. Feeding strategies of deep-sea sub-Arctic macrofauna of the Faroe-Shetland Channel: Combining natural stable isotopes and enrichment techniques. *Deep Res Part I Oceanogr Res Pap.* Elsevier; 2011; 58: 160–172. <https://doi.org/10.1016/j.dsr.2010.11.011>
83. Sweetman AK, Witte U. Macrofaunal response to phytodetritus in a bathyal Norwegian fjord. *Deep Res Part I Oceanogr Res Pap.* 2008; 55: 1503–1514. <https://doi.org/10.1016/j.dsr.2008.06.004>
84. Kazanidis G, Witte UFM. The trophic structure of *Spongisorites coralliophaga*-coral rubble communities at two northeast Atlantic cold water coral reefs. *Mar Biol Res.* Taylor & Francis; 2016; 12: 932–947. <https://doi.org/10.1080/17451000.2016.1216569>
85. Bosley KL, Wainright SC. Effects of preservatives and acidification on the stable isotope ratios ( $^{15}\text{N}:^{14}\text{N}$ ,  $^{13}\text{C}:^{12}\text{C}$ ) of two species of marine animals. *Can J Fish Aquat Sci.* 1999; 56: 2181–2185. <https://doi.org/10.1139/f99-153>
86. Sarakinos HC, Johnson ML, Vander Zanden MJ. A synthesis of tissue-preservation effects on carbon and nitrogen stable isotope signatures. *Can J Zool.* 2002; 80: 381–387. <https://doi.org/10.1139/z02-007>
87. Edwards MS, Turner TF, Sharp ZD. Short- and Long-Term Effects of Fixation and Preservation on Stable Isotope Values ( $\delta^{13}\text{C}$ ,  $\delta^{15}\text{N}$ ,  $\delta^{34}\text{S}$ ) of Fluid-Preserved Museum Specimens. *Copeia.* 2002; 4: 1106–1112. [https://doi.org/10.1643/0045-8511\(2002\)002\[1106:SALTEO\]2.0.CO;2](https://doi.org/10.1643/0045-8511(2002)002[1106:SALTEO]2.0.CO;2)
88. Xu J, Yang Q, Zhang M, Zhang M, Xie P, Hansson LA. Preservation effects on stable isotope ratios and consequences for the reconstruction of energetic pathways. *Aquat Ecol.* 2011; 45: 483–492. <https://doi.org/10.1007/s10452-011-9369-5>
89. Bicknell AWJ, Campbell M, Knight ME, Bilton DT, Newton J, Votier SC. Effects of formalin preservation on stable carbon and nitrogen isotope signatures in Calanoid copepods: Implications for the use of Continuous Plankton Recorder Survey samples in stable isotope analyses. *Rapid Commun Mass Spectrom.* 2011; 25: 1794–1800. <https://doi.org/10.1002/rcm.5049> PMID: 21638354
90. González-Bergonzoni I, Vidal N, Wang B, Ning D, Liu Z, Jeppesen E, et al. General validation of formalin-preserved fish samples in food web studies using stable isotopes. *Methods Ecol Evol.* 2015; 6: 307–314. <https://doi.org/10.1111/2041-210X.12313>



91. Lau DCP, Leung KMY, Dudgeon D. Preservation effects on C/N ratios and stable isotope signatures of freshwater fishes and benthic macroinvertebrates. *Limnol Oceanogr Methods*. 2012; 10: 75–89. <https://doi.org/10.4319/lom.2012.10.75>
92. Kaehler S, Pakhomov E a. Effects of storage and preservation on the d13C and d15N signatures of selected marine organisms. *Mar Ecol Prog Ser*. 2001; 219: 299–304. <https://doi.org/10.3354/meps219299>
93. Parnell A, Jackson A. SIAR: Stable Isotope Analysis in R. 2013.
94. Roy V, Iken K, Gosselin M, Tremblay J-É, Bélanger S, Archambault P. Benthic faunal assimilation pathways and depth-related changes in food-web structure across the Canadian Arctic. *Deep Res Part I Oceanogr Res Pap*. 2015; 102: 55–71. <https://doi.org/10.1016/j.dsr.2015.04.009>
95. Layman CA, Arrington DA, Montaña CG, Post DM. Can stable isotope ratios provide for community-wide measures of trophic structure? *Ecology*. 2007; 88: 42–48. [https://doi.org/10.1890/0012-9658\(2007\)88\[42:CSIRPF\]2.0.CO;2](https://doi.org/10.1890/0012-9658(2007)88[42:CSIRPF]2.0.CO;2) PMID: 17489452
96. Bell L, Bluhm BA, Iken K. The influence of terrestrial matter in marine food webs of the Beaufort Sea shelf and slope. *Mar Ecol Prog Ser*. 2016; 550: 1–24. <https://doi.org/10.1007/s13398-014-0173-7.2>
97. Søreide JE, Carroll ML, Hop H, Ambrose WG Jr., Hegseth EN, Falk-Petersen S. Sympagic-pelagic-benthic coupling in Arctic and Atlantic waters around Svalbard revealed by stable isotopic and fatty acid tracers. *Mar Biol Res*. 2013; 9: 831–850. <https://doi.org/10.1080/17451000.2013.775457>
98. Divine LM, Iken K, Bluhm BA. Regional benthic food web structure on the Alaska Beaufort Sea shelf. *Mar Ecol Prog Ser*. 2015; 531: 15–32. <https://doi.org/10.3354/meps11340>
99. Cooper LW, Sexson MG, Grebmeier JM, Gradinger R, Mordy CW, Lovvorn JR. Linkages between sea-ice coverage, pelagic-benthic coupling, and the distribution of spectacled eiders: Observations in March 2008, 2009 and 2010, northern Bering Sea. *Deep Res Part II Top Stud Oceanogr*. Elsevier; 2013; 94: 31–43. <https://doi.org/10.1016/j.dsr2.2013.03.009>
100. Degen R, Vedenin A, Gusky M, Boetius A, Brey T. Patterns and trends of macrobenthic abundance, biomass and production in the deep Arctic Ocean. *Polar Res*. 2015; 1: 1–18. <https://doi.org/10.3402/polar.v34.24008>
101. Conlan K, Aitken A, Hendrycks E, McClelland C, Melling H. Distribution patterns of Canadian Beaufort Shelf macrobenthos. *J Mar Syst*. 2008; 74: 864–886. <https://doi.org/10.1016/j.jmarsys.2007.10.002>
102. Bluhm BA, WG Jr., Bergmann M, Clough LM, Gebruk A V., Hasemann C, et al. Diversity of the arctic deep-sea benthos. *Mar Biodivers*. 2011; 41: 87–107. <https://doi.org/10.1007/s12526-010-0078-4>
103. Grebmeier JM, Barry JP. The influence of oceanographic processes on pelagic-benthic coupling in polar regions: A benthic perspective. *J Mar Syst*. 1991; 2: 495–518. [https://doi.org/10.1016/0924-7963\(91\)90049-Z](https://doi.org/10.1016/0924-7963(91)90049-Z)
104. Bluhm BA, MacDonald IR, Debenham C, Iken K. Macro- and megabenthic communities in the high Arctic Canada Basin: initial findings. *Polar Biol*. 2005; 28: 218–231. <https://doi.org/10.1007/s00300-004-0675-4>
105. Clough LM, Ambrose WG Jr., Cochran JK, C, Renaud PE, Aller RC. Infaunal density, biomass and bioturbation in the sediments of the arctic ocean. *Deep Res Part II Top Stud Oceanogr*. 1997; 44: 1683–1704. [https://doi.org/10.1016/S0967-0645\(97\)00052-0](https://doi.org/10.1016/S0967-0645(97)00052-0)
106. Kröncke I. Macrobenthos composition, abundance and biomass in the Arctic Ocean along a transect between Svalbard and the Makarov Basin. *Polar Biol*. 1994; 14: 519–529. <https://doi.org/10.1007/BF00238221>
107. Paul AZ, Menzies RJ. Benthic ecology of the high Arctic deep sea. *Mar Biol*. 1974; 27: 251–262. <https://doi.org/10.1007/BF00391950>
108. Kröncke I. Macrofauna communities in the Amundsen Basin, at the Morris Jesup Rise and at the Yermak Plateau (Eurasian Arctic Ocean). *Polar Biol*. 1998; 19: 383–392. <https://doi.org/10.1007/s003000050263>
109. Clough LM, Renaud PE, Ambrose WG Jr. Impacts of water depth, sediment pigment concentration, and benthic macrofaunal biomass on sediment oxygen demand in the western Arctic Ocean. *Can J Fish Aquat Sci*. 2005; 62: 1756–1765. <https://doi.org/10.1139/f05-102>
110. Stoker SW. Benthic Invertebrate Macrofauna of the Eastern Continental Shelf of the Bering and Chukchi Seas. University of Alaska. 1978.
111. Galéron J, Sibuet M, Mahaut ML, Dinet A. Variation in structure and biomass of the benthic communities at three contrasting sites in the tropical Northeast Atlantic. *Mar Ecol Prog Ser*. 2000; 197: 121–137. <https://doi.org/10.3354/meps197121>
112. MacDonald IR, Bluhm BA, Iken K, Gagaev S, Strong S. Benthic macrofauna and megafauna assemblages in the Arctic deep-sea Canada Basin. *Deep Res Part II Top Stud Oceanogr*. 2010; 57: 136–152. <https://doi.org/10.1016/j.dsr2.2009.08.012>

113. Deubel H. Struktureigenschaften und Nahrungsbedarf der Zoobenthosgemeinschaften im Bereich des Lomonossowrückens im Arktischen Ozean. *Berichte zur Polarforsch.* 2000; 370: 1–147.
114. Smith CR, De Leo FC, Bernardino AF, Sweetman AK, Arbizu PM. Abyssal food limitation, ecosystem structure and climate change. *Trends Ecol Evol.* 2008; 23: 518–528. <https://doi.org/10.1016/j.tree.2008.05.002> PMID: 18584909
115. Soltwedel T, Schewe I. Activity and biomass of the small benthic biota under permanent ice-coverage in the central Arctic Ocean. *Polar Biol.* 1998; 19: 52–62. <https://doi.org/10.1007/s003000050215>
116. Barber DG, Hop H, Mundy CJ, Else B, Dmitrenko IA, Tremblay JE, et al. Selected physical, biological and biogeochemical implications of a rapidly changing Arctic Marginal Ice Zone. *Prog Oceanogr.* Elsevier Ltd; 2015; 139: 122–150. <https://doi.org/10.1016/j.pocean.2015.09.003>
117. Tamelander T, Reigstad M, Hop H, Carroll ML, Wassmann P. Pelagic and sympagic contribution of organic matter to zooplankton and vertical export in the Barents Sea marginal ice zone. *Deep Res Part II Top Stud Oceanogr.* 2008; 55: 2330–2339. <https://doi.org/10.1016/j.dsr2.2008.05.019>
118. Schonberg S V, Clarke JT, Dunton KH. Distribution, abundance, biomass and diversity of benthic infauna in the Northeast Chukchi Sea, Alaska: Relation to environmental variables and marine mammals. *Deep Res Part II Top Stud Oceanogr.* 2014; 102: 144–163. <https://doi.org/10.1016/j.dsr2.2013.11.004>
119. Naidu AS, Scalan RS, Feder HM, Goering JJ, Hameedi MJ, Parker PL, et al. Stable organic carbon isotopes in sediments of the north Bering-south Chukchi seas, Alaskan-Soviet Arctic Shelf. *Cont Shelf Res.* 1993; 13: 669–691. [https://doi.org/10.1016/0278-4343\(93\)90099-J](https://doi.org/10.1016/0278-4343(93)90099-J)
120. Włodarska-Kowalczyk M, Kendall MA, Marcin Weslawski J, Klages M, Soltwedel T. Depth gradients of benthic standing stock and diversity on the continental margin at a high-latitude ice-free site (off Spitsbergen, 79°N). *Deep Res Part I Oceanogr Res Pap.* 2004; 51: 1903–1914. <https://doi.org/10.1016/j.dsr.2004.07.013>
121. Borstad GA, Gower JFR. Phytoplankton chlorophyll distribution in the eastern Canadian Arctic. *Arctic.* 1984; 37: 224–233.
122. Coyle KO, Konar B, Blanchard AL, Highsmith RC, Carroll J, Carroll M, et al. Potential effects of temperature on the benthic infaunal community on the southeastern Bering Sea shelf: Possible impacts of climate change. *Deep Res Part II Top Stud Oceanogr.* 2007; 54: 2885–2905. <https://doi.org/10.1016/j.dsr2.2007.08.025>
123. Lalande C. Composition et structure de la communauté benthique et quantification de la bioturbation dans la polynie des Eaux du Nord. Mémoire de maîtrise, Institut des sciences de la mer de Rimouski, Université du Québec à Rimouski, Rimouski. 2003.
124. Brandt A, Schnack K. Macrofaunal abundance at 79° off east Greenland: Opposing data from epibenthic-sledge and box-corer samples. *Polar Biol.* 1999; 22: 75–81. <https://doi.org/10.1007/s003000050392>
125. Deubel H, Engel M, Fetzer I, Gagev S, Hirche H-J, Klages M, et al. The southern Kara Sea ecosystem: Phytoplankton, zooplankton and benthos communities influenced by river run-off. In: Stein R., Fahl K, Fütterer DK, Galimov EM, Stepanets O, editors. *Siberian river run-off in the Kara Sea.* Amsterdam: Elsevier; 2003. pp. 237–265.
126. Brandt A. Peracarid fauna (Crustacea, Malacostraca) of the northeast water polynya off Greenland: Documenting close benthic-pelagic coupling in the Westwind Trough. *Mar Ecol Prog Ser.* 1995; 121: 39–52. <https://doi.org/10.3354/meps121039>
127. Stewart PL, Pocklington P, Cunjak RA. Distribution, abundance and diversity of benthic macroinvertebrates on the Canadian continental shelf and slope of southern Davis Strait and Ungava Bay. *Arctic.* 1985; 38: 281–291.
128. Carroll ML, Ambrose WG Jr. Benthic infaunal community variability on the northern Svalbard shelf. *Polar Biol.* 2012; 35: 1259–1272. <https://doi.org/10.1007/s00300-012-1171-x>
129. MacDonald TA, Burd BJ, van Roodselaar A. Facultative feeding and consistency of trophic structure in marine soft-bottom macrobenthic communities. *Mar Ecol Prog Ser.* 2012; 445: 129–140. <https://doi.org/10.3354/meps09478>
130. Włodarska M, Węślawski JM, Gromisz S. A comparison of the macrofaunal community structure and diversity in two arctic glacial bays—A “cold” one off Franz Josef Land and a “warm” one off Spitsbergen. *Oceanologia.* 1996; 38: 251–283.
131. Wassmann P, Reigstad M, Haug T, Rudels B, Carroll ML, Hop H, et al. Food webs and carbon flux in the Barents Sea. *Prog Oceanogr.* 2006; 71: 232–287. <https://doi.org/10.1016/j.pocean.2006.10.003>
132. McConnaughey T, McRoy CP. Food-Web structure and the fractionation of Carbon isotopes in the bering sea. *Mar Biol.* 1979; 53: 257–262. <https://doi.org/10.1007/BF00952434>

133. Iken K, Brey T, Wand U, Voigt J, Junghans P. Food web structure of the benthic community at the Porcupine Abyssal Plain (NE Atlantic): a stable isotope analysis. *Prog Oceanogr.* 2001; 50: 383–405. [https://doi.org/10.1016/S0079-6611\(01\)00062-3](https://doi.org/10.1016/S0079-6611(01)00062-3)
134. Boetius A, Albrecht S, Bakker K, Bienhold C, Felden J, Fernández-Méndez M, et al. Export of algal biomass from the melting Arctic sea ice. *Science* (80-). 2013; 339: 1430–2. <https://doi.org/10.1126/science.1231346> PMID: 23413190
135. Søreide JE, Nygård H. Challenges using stable isotopes for estimating trophic levels in marine amphipods. *Polar Biol.* 2012; 35: 447–453. <https://doi.org/10.1007/s00300-011-1073-3>
136. Mincks SL, Smith CR, Jeffreys RM, Sumida PYG. Trophic structure on the West Antarctic Peninsula shelf: Detritivory and benthic inertia revealed by  $\delta^{13}\text{C}$  and  $\delta^{15}\text{N}$  analysis. *Deep Res Part II Top Stud Oceanogr.* 2008; 55: 2502–2514. <https://doi.org/10.1016/j.dsr2.2008.06.009>
137. Würzberg L, Peters J, Schüller M, Brandt A. Diet insights of deep-sea polychaetes derived from fatty acid analyses. *Deep Res Part II Top Stud Oceanogr.* 2011; 58: 153–162. <https://doi.org/10.1016/j.dsr2.2010.10.014>
138. Drazen JC, Phleger CF, Guest MA, Nichols PD. Lipid, sterols and fatty acids of abyssal polychaetes, crustaceans, and a cnidarian from the northeast Pacific Ocean: Food web implications. *Mar Ecol Prog Ser.* 2008; 372: 157–167. <https://doi.org/10.3354/meps07707>
139. Cadée GC. Opportunistic feeding, a serious pitfall in trophic structure analysis of (paleo)faunas. *Lethaia.* 1984; 17: 289–292. <https://doi.org/10.1111/j.1502-3931.1984.tb00674.x>