

Supplementary Figures

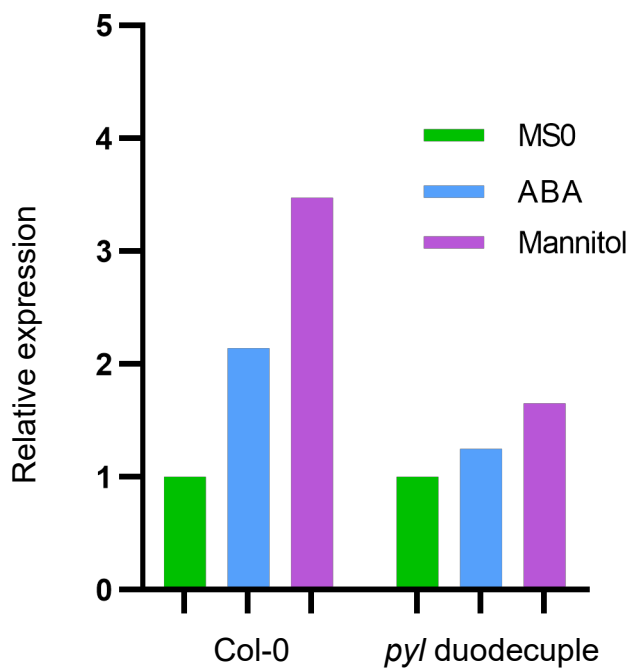


Figure S1. *ALKBH10B* expression in *pyl* duodecuple mutant in response to ABA and mannitol. Data from the transcriptome results of previous research (Zhao et al., 2018).

Col-0 *alkbh10b-1*

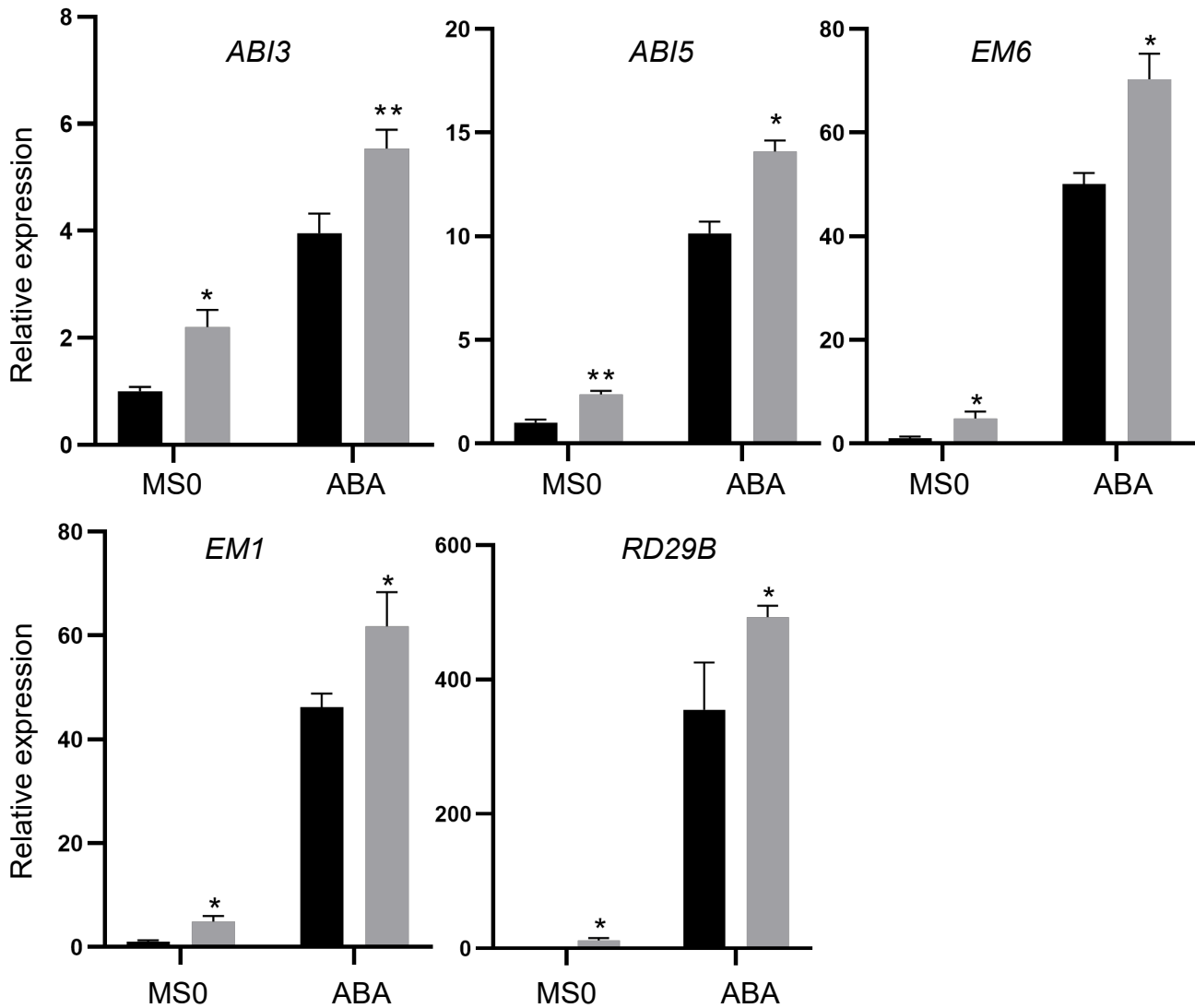


Figure S2. ALKBH10B regulates the expression of ABA response genes in germinating seeds. The expression patterns of ABA signaling-related ABI3, ABI5, and RD29B, and embryogenesis-related EM1 and EM6 were determined in seeds germinated for 2.5 d on medium containing 0 or 0.5 μM ABA. The transcript level of each gene was normalized to that of *At2G28390*, and the relative level of each gene in mock-treated Col-0 was set to 1. Values are mean ± SD of three replications. Asterisks indicate statistically significant differences (*P < 0.05 and **P < 0.01; Student's t test).

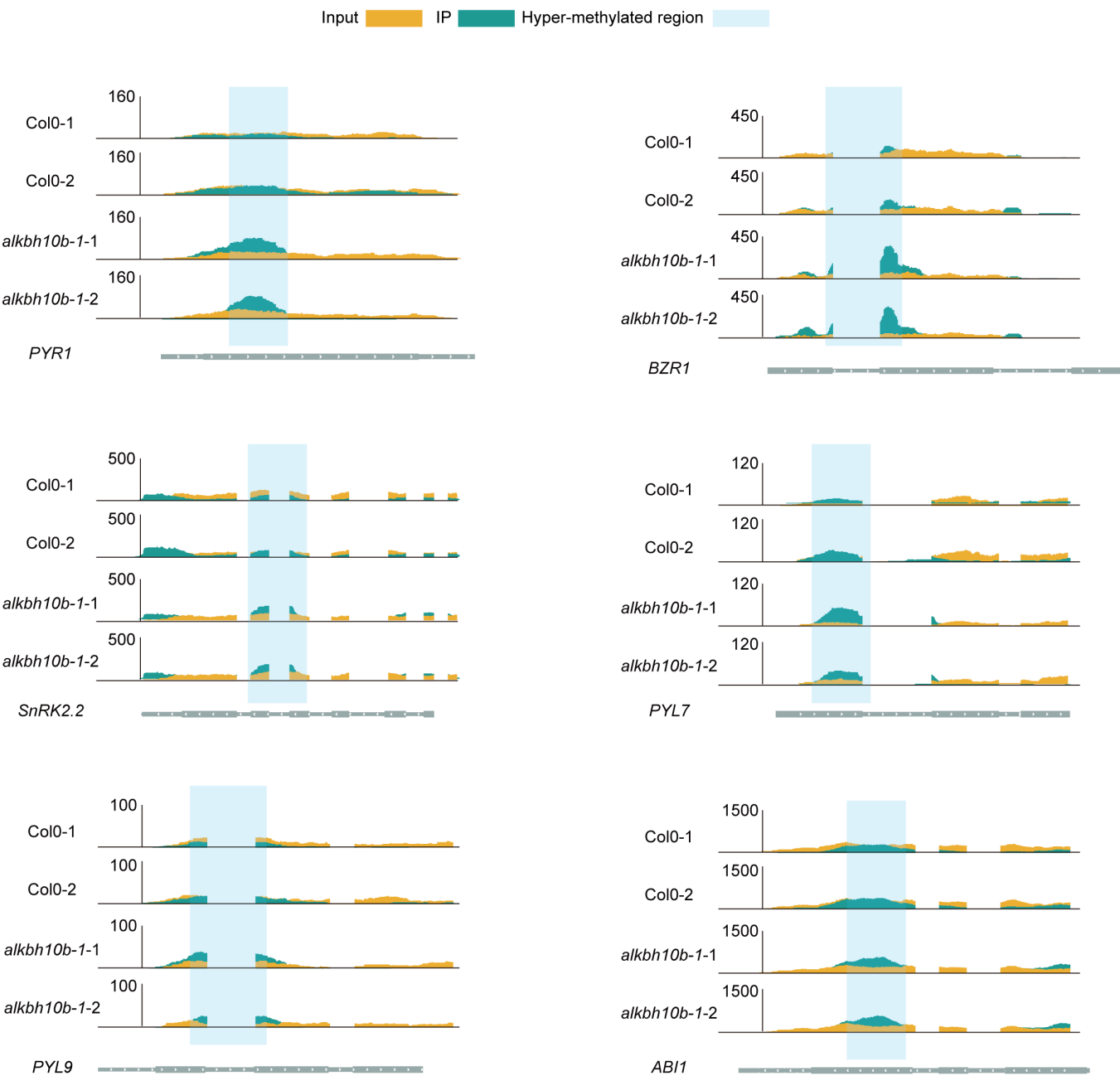


Figure S3. Integrative genomics viewer (IGV) tracks of *ABI1*, *PYL7*, *PYL9*, *PYR1*, and *SnRK2.2* in m⁶A-seq results from Duan et al., 2017 between *alkbh10b-1* and Col-0 under normal conditions.