

Figure 8

①: Control; ②: CPT 6 $\mu\text{g/ml}$; ③: TanIIA 4 $\mu\text{g/ml}$

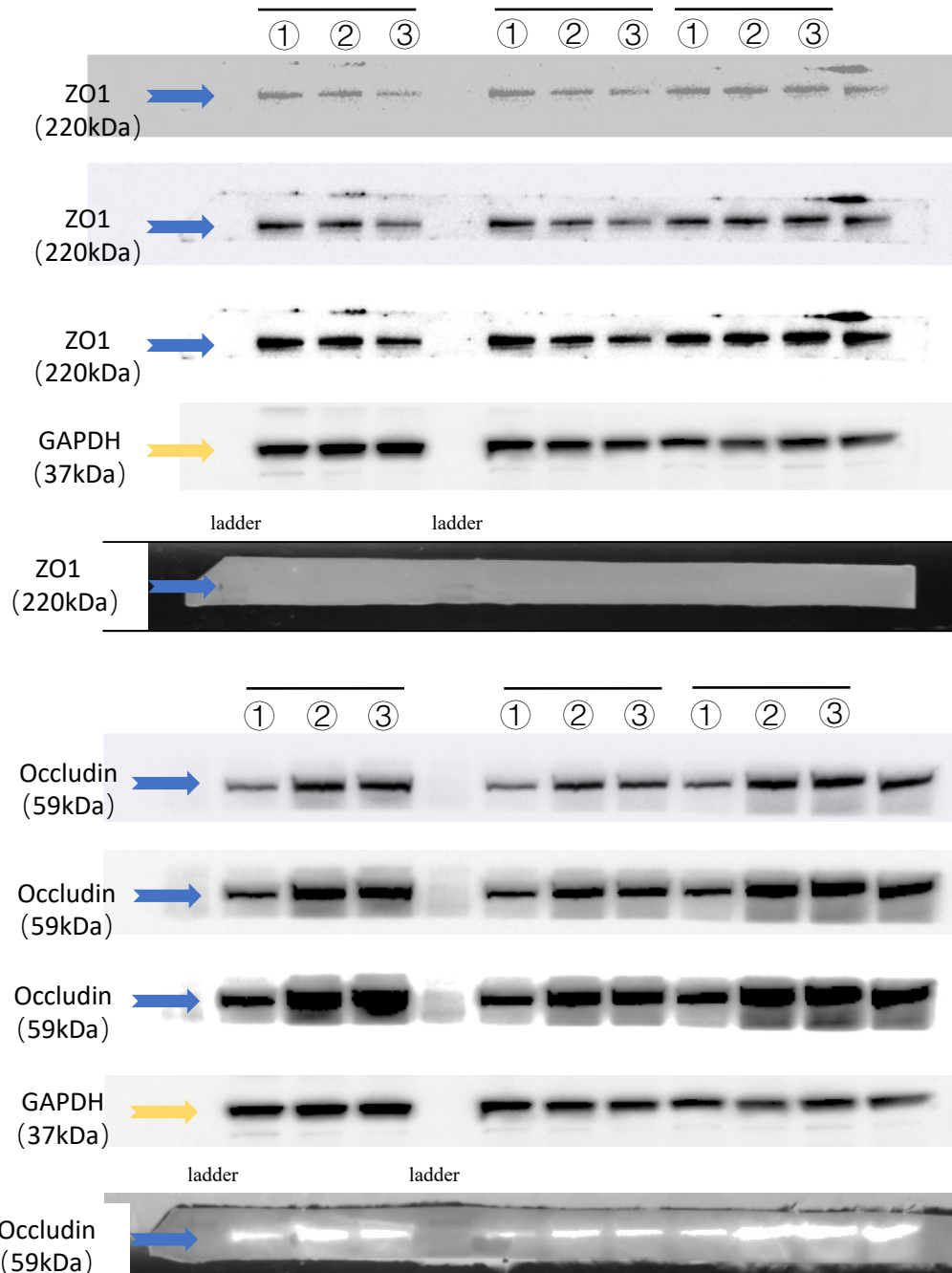


Figure legend:

Supplement Figure 8. We completed the Western-blot experiment shown in this picture in the same gel. However, in order to incubate different antibodies, the PVDF membrane was therefore sheared after the transfer of one complete gel. The raw Western-blot analyses of tight junction protein expression, including ZO1 and Occludin, in A549 cells from control, CPT, and TanIIA groups were demonstrated. We repeated the experiment three times on a single gelatin plate, while blotting images are provided for each of the three different exposure times, and white plate images are provided at the end.

Figure 10

①: Control; ②: CPT; ③: TanIIA; ④: Bev

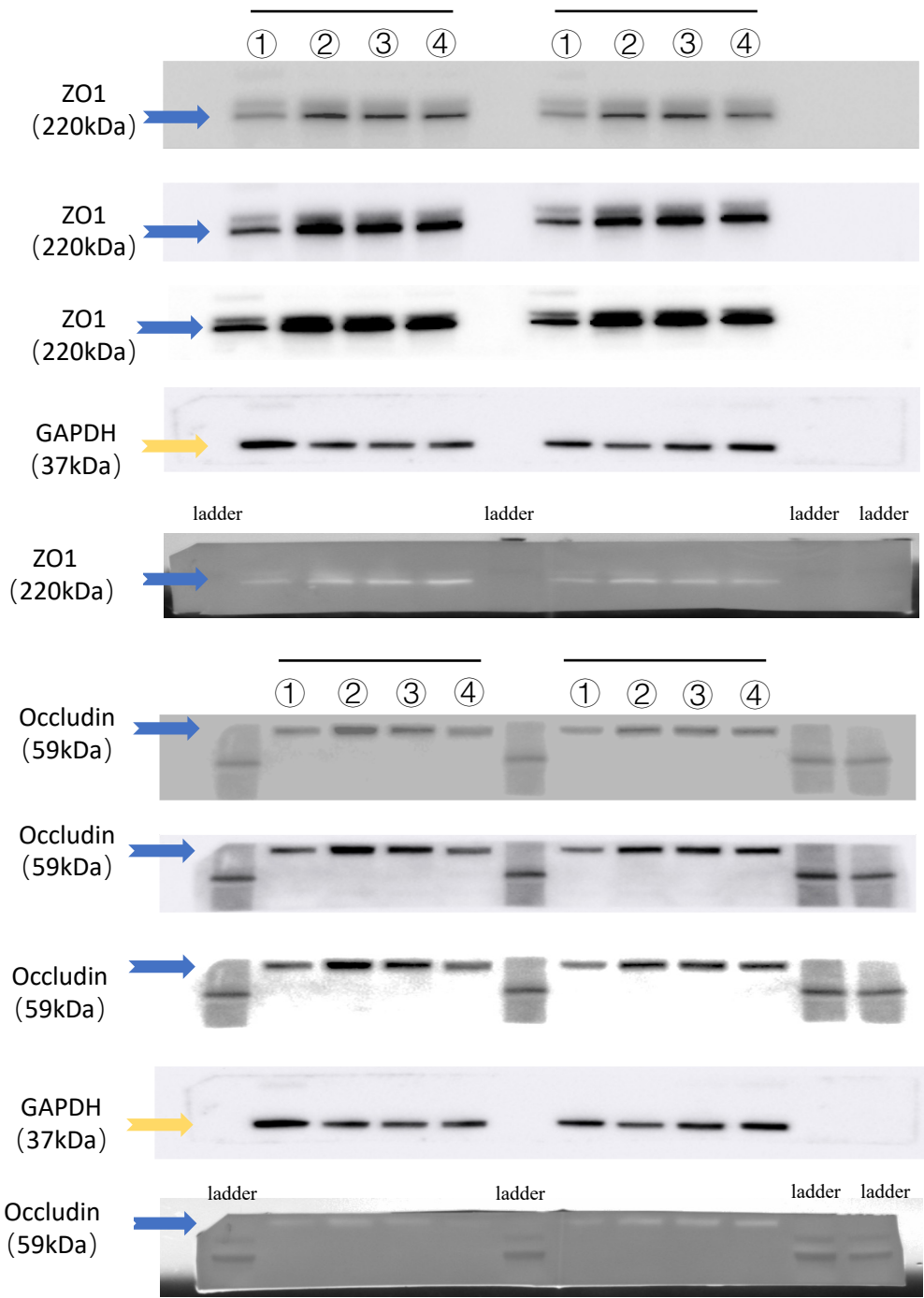


Figure legend:

Supplement Figure 10. We completed the Western-blot experiment shown in this picture in the same gel. However, in order to incubate different antibodies, the PVDF membrane was therefore sheared after the transfer of one complete gel. The raw Western-blot analyses of tight junction protein expression, including ZO1 and Occludin, in tumor tissues of mice from control, CPT, TanIIA and bevacizumad groups were demonstrated. We repeated the experiment two times on a single gelatin plate, while blotting images are provided for each of the three different exposure times, and white plate images are provided at the end.

Figure 11

- ①: mimic NC; ②: miR-21-5p mimic;
③: miR-21-5p mimic+CPT 6 $\mu\text{g/ml}$;
④: miR-21-5p mimic+ TanIIA 4 $\mu\text{g/ml}$

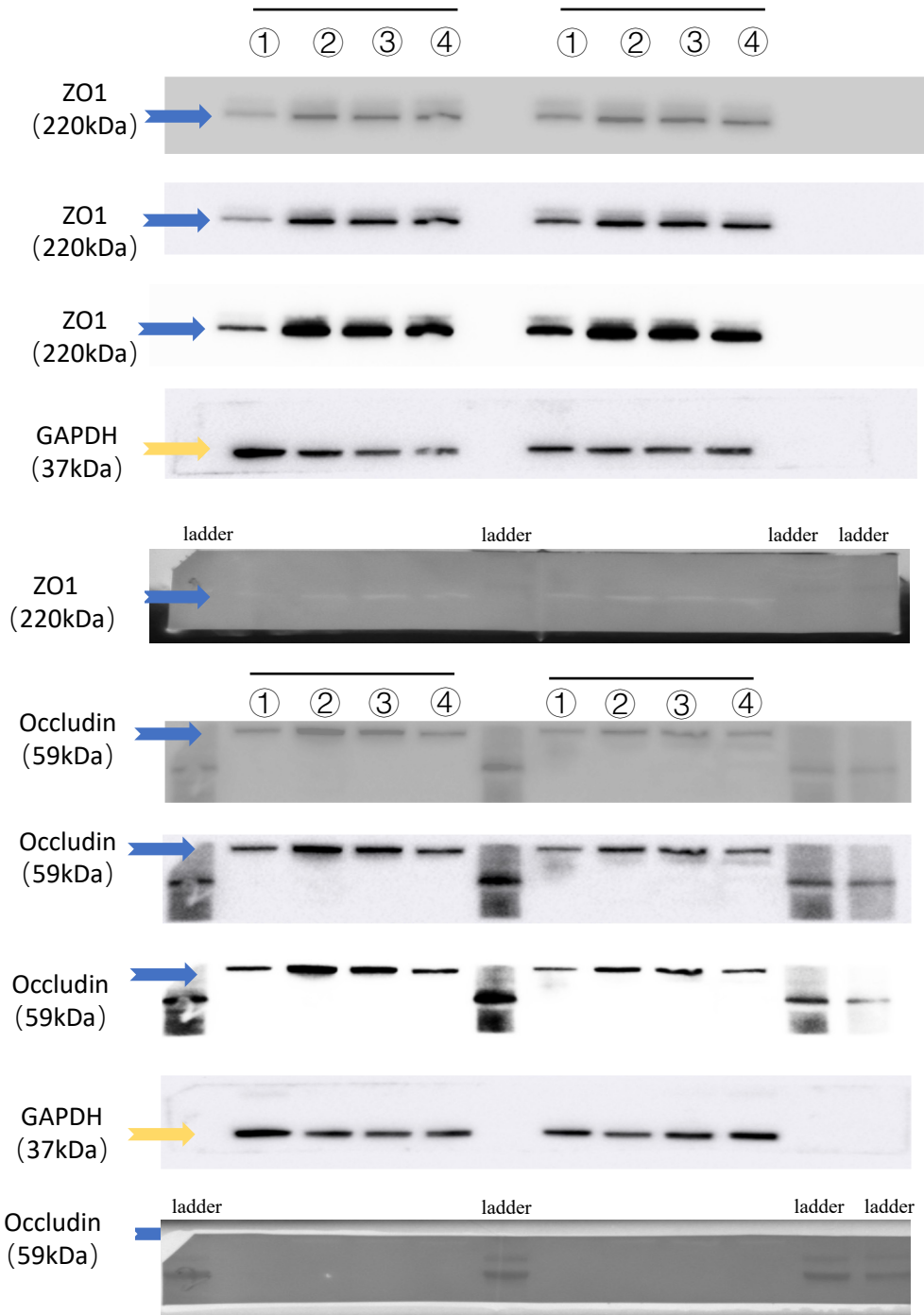


Figure legend:
Supplement Figure 11. . We completed the Western-blot experiment shown in this picture in the same gel. However, in order to incubate different antibodies, the PVDF membrane was therefore sheared after the transfer of one complete gel. The raw Western-blot analyses of tight junction protein expression, including ZO1 and Occludin, of miR-21-5p mimics in A549 cell lines were demonstrated . We repeated the experiment two times on a single gelatin plate, while blotting images are provided for each of the three different exposure times, and white plate images are provided at the end.