

Comparison of the Blood and Lymphatic Microvessel Density of Pleomorphic Adenoma and Basal Cell Adenoma

Andresa Borges Soares¹, Albina Altemani², Thais Ribeiro de Oliveira¹, Felipe de Oliveira Fonseca Rodrigues¹, Alfredo Ribeiro-Silva³, Danilo Figueiredo Soave³, Fabricio Passador-Santos¹, Suellen Trentin Brum¹, Marcelo Henrique Napimoga¹ and Vera Cavalcanti de Araújo¹

¹Department of Oral Pathology, São Leopoldo Mandic Institute and Research Center, Campinas, ²Department of Pathology, School of Medicine, State University of Campinas (UNICAMP), ³Department of Pathology, Ribeirão Preto Medical School, University of São Paulo, São Paulo, Brazil.

ABSTRACT

BACKGROUND: Pleomorphic adenoma (PA) is the most common tumor of the salivary gland, while basal cell adenoma (BCA) is an uncommon neoplasm. Blood and lymphatic vessels are crucial for tumor metabolism. The aim of this study was to compare the blood and lymphatic vascular density and vascular and endothelial growth factor (VEGF) expression in PA and BCA tumors. In addition, cell proliferation was evaluated in these tumors.

METHODS: Blood and lymphatic vessel content, VEGF expression, and cell proliferation were analyzed in 30 cases of PA and 13 cases of BCA by immunohistochemistry using antibodies for CD34, CD105, D2-40, VEGF, and Mcm-2.

RESULTS: Regarding CD34 and CD105 expression, PA demonstrated a high vascularity and a low number of positive vessels, respectively. D2-40-positive lymphatic vessels were mainly located in the tumor capsules, with small intratumoral lymphatic vessels observed occasionally. VEGF expression revealed a remarkably heterogeneous immunoreactivity, alternating from weak or negative to positive or intense. BCA presented significantly higher CD34, CD34, CD105, D2-40, and VEGF expression compared to PA. No significant difference was found in cell proliferation between the tumors.

CONCLUSION: Although PA and BCA are considered part of the same spectrum of differentiation, this study showed that the blood and lymphatic vascularization of these tumors is different.

KEYWORDS: pleomorphic adenoma, basal cell adenoma, blood vessel, lymph vessel, vascular density

CITATION: Soares et al. Comparison of the Blood and Lymphatic Microvessel Density of Pleomorphic Adenoma and Basal Cell Adenoma. *Clinical Medicine Insights: Pathology* 2015:8 17–21 doi: 10.4137/CPATH.S23035.

RECEIVED: December 18, 2014. **RESUBMITTED:** January 12, 2015. **ACCEPTED FOR PUBLICATION:** January 12, 2015.

ACADEMIC EDITOR: Dama Laxminarayana, Editor in Chief

TYPE: Original Research

FUNDING: This study was supported by FAPESP (Fundação de Amparo à Pesquisa do Estado de São Paulo) (number 11/51549–7). The authors confirm that the funder had no influence over the study design, content of the article, or selection of this journal.

COMPETING INTERESTS: Authors disclose no potential conflicts of interest.

CORRESPONDENCE: andresabs@hotmail.com

COPYRIGHT: © the authors, publisher and licensee Libertas Academica Limited. This is an open-access article distributed under the terms of the Creative Commons CC-BY-NC 3.0 License.

Paper subject to independent expert blind peer review by minimum of two reviewers. All editorial decisions made by independent academic editor. Upon submission manuscript was subject to anti-plagiarism scanning. Prior to publication all authors have given signed confirmation of agreement to article publication and compliance with all applicable ethical and legal requirements, including the accuracy of author and contributor information, disclosure of competing interests and funding sources, compliance with ethical requirements relating to human and animal study participants, and compliance with any copyright requirements of third parties. This journal is a member of the Committee on Publication Ethics (COPE).

Published by Libertas Academica. Learn more about this journal.

Introduction

Salivary gland tumors are rare, accounting for between 2.0% and 5.6% of all neoplasms of the head and the neck.¹ Among them, pleomorphic adenoma (PA) is the most common tumor, accounting for 60%–70% of all neoplasms.^{1,2} In contrast, basal cell adenoma (BCA) is a rare, benign epithelial neoplasm that comprises 1%–3% of the epithelial salivary gland tumors.^{1,3} PA and BCA have numerous similarities. They are composed of luminal and abluminal cells, and both have a good prognosis.^{1–3}

In tumor biology, the blood and lymphatic vessels are important components of the tumor microenvironment. The blood and lymphatic vessels of tumors are newly formed from the preexisting host vessels in response to stimulation by pro-angiogenic and pro-lymphangiogenic factors expressed by tumor cells, such as the vascular endothelial growth factor (VEGF). Tumor cells establish a specific stromal

microenvironment that fosters tumor growth, which involves blood/lymph angiogenesis.⁴ Studies have shown that triggering angiogenesis and lymph angiogenesis are crucial events in tumor growth.^{5,6}

Studies indicate that the processes of proliferation and angiogenesis delineate the biology of individual tumors.⁷ Many cell cycle proteins have been employed as cell proliferation biomarkers, of which Ki-67 and Mcm-2 are the most widely used.^{8,9} Mcm-2 is present in the early G1 phase of the cell cycle.^{8,10} For this reason, research currently suggests that Mcm-2 is a more specific and sensitive cell proliferation marker than Ki-67.^{8,9,11}

The blood and lymphatic vascularization of malignant tumors has been widely investigated, mostly concerning angiogenesis and antiangiogenic therapy. However, these studies have focused on the malignant processes, whereas few studies have been devoted to benign tumors. There are

a few studies concerning blood and lymphatic vascularization in PA,^{12,13} while there has been no such investigation for BCA. Therefore, the purpose of this study was to compare the vascular/lymphatic microenvironment in PA and BCA. Using immunohistochemistry, a comparison was made by measuring the microvessel density (MVD) using antibodies for CD34 and CD105, lymphatic vascular density (LVD) using the D2–40 antibody, and growth factor using the VEGF antibody. In addition, immunohistochemical staining for the MCM-2 antigen was conducted to evaluate cell proliferation in PA and BCA tumors.

Materials and Methods

The present study involved 30 cases of PA and 13 cases of BCA. Two pathologists reviewed all diagnoses using 5- μ m sections obtained from formalin-fixed, paraffin-embedded samples and stained with hematoxylin and eosin. Demographic and clinical information were obtained from the patients' medical records. The study protocol was approved by the Committee of Ethics in Research of the Faculty of Dentistry at the São Leopoldo Mandic Institute and Research Center.

Immunohistochemistry. One paraffin block from each case was chosen for immunohistochemical staining with the following antibodies (Table 1): anti-CD34 and anti-CD105 to detect blood vessels; anti-D2–40 to detect lymphatic vessels; anti-VEGF to detect vascular growth factors; and anti-MCM-2 to detect cell proliferation.

The 5- μ m sections were deparaffinized and hydrated, and endogenous peroxidase activity was quenched by immersing the slides in 3% hydrogen peroxide. Antigen retrieval (AR) was achieved by immersing the slides in boiling citrate buffer (pH 6.0) for all antibodies except for anti-CD105, which was performed using 0.4% pepsin for 30 minutes (Table 1). Only the anti-CD105 sections were incubated at 37 °C with a serum-free protein blocking solution (code x0909, Dako, SA) for 30 minutes. Subsequently, the sections were incubated with the primary antibody overnight at 4 °C, followed by EnVision polymer HRP and Envision+ (code K1491, DAKO) for one hour at 37 °C. The sections were stained for five minutes at 37 °C with 3,3'-diaminobenzidine tetrahydrochloride (DAB) and counter-stained with hematoxylin. A negative control was

obtained by omitting the primary antibody. No staining was observed in this section.

Density of blood and lymphatic microvessels. Immunohistochemical staining for CD34, CD105, and D2–40 was interpreted by two pathologists using a double-headed microscope. Observation of vascularization was performed throughout the whole specimen, but the most cellular areas were chosen for counting of the vasculature. To assess the number of vessels, images were obtained from five fields (hotspots) per case (40 \times objective, 0.44 mm field diameter) using a camera attached to an Olympus CX30 microscope. The images were analyzed with Imagemlab analysis software (version 2.4), which allowed manual segmentation of the target vessels. The blood and lymphatic microvascular densities obtained from CD34, CD105, and D2–40 immunostaining were expressed as the mean number of intratumoral microvessels counted. There was no restriction regarding the size of a countable microvessel; however, vessels with muscular walls and areas observed to be necrotic were excluded.

Growth factor. Growth factor immunohistochemical reactions to VEGF were used in the initial evaluation to verify the expression pattern of the sections stained with the antibody. The labeled sections were evaluated qualitatively and semiquantitatively. The qualitative analysis was performed via the evaluation of the positive cells from different areas in all cases. The relative number of neoplastic cells was considered in relation to all neoplastic cells observed for each stained section. When the number of positive cells was more than 10%,

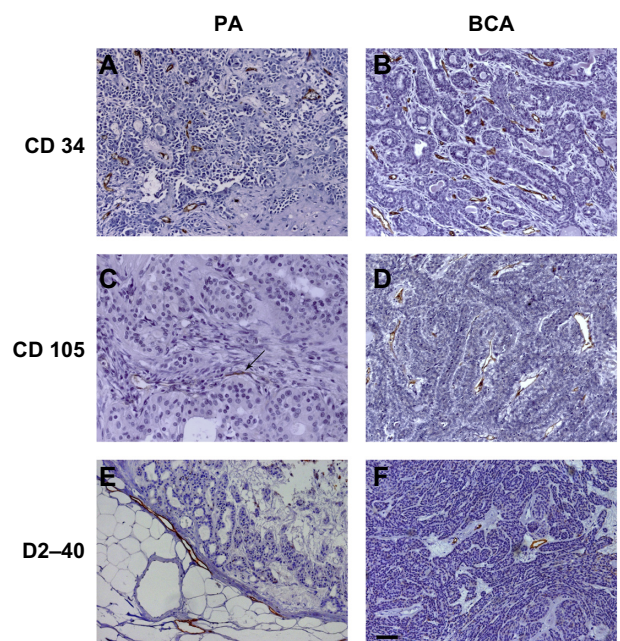


Figure 1. Immunostaining of blood and lymphatic vessels in pleomorphic adenoma (PA) and basal cell adenoma (BCA). Many CD34-positive blood vessels are seen in PA and BCA (A, B). A small number of CD105-positive vessels are observed in BCA and PA (C, D). D2–40-positive lymphatic vessels are found in the tumor margins of PA, while intratumoral D2–40-positive lymphatic vessels were found in BCA (E, F). Bars: A, B, D, E, F = 266 μ m; C = 100 μ m.

Table 1. Details of the antibodies used for immunohistochemistry.

SPECIFICITY	CLONE	DILUTION	SOURCE	BUFFER (AR)
CD34	QBEnd 10	1:50	Dako*	Citrate
CD 105	SNG	1:10	Dako*	Pepsin
D2–40	D2–40	1:200	Dako*	Tris-EDTA
VEGF	Sc-7269	1:100	Santa Cruz**	Citrato
MCM-2	SP85	1:200	Spring***	Citrate

Notes: *Dako Corporation, Glostrup, Denmark. **Santa Cruz Biotechnology, Inc., Santa Cruz, CA, USA. ***Spring Bioscience, Pleasanton, CA, USA.

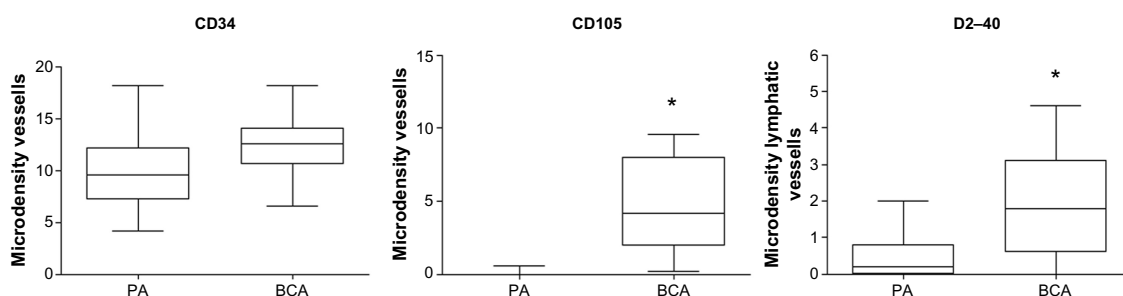


Figure 2. Box and whisker plots of lymphatic vessel density (LVD) and microvessel density (MVD) in pleomorphic adenoma (PA) and in basal cell adenoma (BCA) ($n = 30$ and 13 , respectively) determined using CD34, CD105, and D2-40 antibodies.

the case was considered positive. A grading system based on reactivity percentage was assigned on a scale from 0 to 3. Less than 10% cell reactivity was assigned 0; 10%–25% cell reactivity was assigned 1; 25%–50% cell reactivity was assigned 2; and reactivity greater than 50% was assigned 3.

Cell proliferation. The proliferative indexes of Mcm-2 were obtained by calculating the percentage of cells with positive nuclear staining in a total of 500 tumor cells examined by microscopy at 40 \times magnification.

Statistical analysis. Statistical analysis of the data was performed using GraphPad Prism 4[®] statistical software; the Kolmogorov–Smirnov test was used for evaluation of normality. Comparison between two groups of variables with non-normal distribution was performed using the Mann–Whitney test. VEGF staining was evaluated using a score, with the statistical test employed being the Wilcoxon. The level of significance in both tests was set at 5%.

Results

The PA group included 20 women and 10 men. Nineteen of the tumors were located in the palate, eight in the parotid, and three in the submandibular glands. The average age of the patients was 38 years. The BCA group included seven

women and five men, as well as one person whose gender was not listed. The average age was 62 years, with 12 tumors being located in the parotid and 1 tumor in the glands of the upper lip. Data were not available for one BCA and one PA case.

Microvascular density assessed using anti-CD34 and anti-CD105. CD34-positive staining revealed high vascularity in both tumor types. In PA, the vessels were detected mostly in cellular-rich areas (mean = 6.33, SD = 4.02), whereas in BCA the vessels were dispersed throughout the tumors (mean = 12.23, SD = 3.28). There was a significant difference between PA and BCA in terms of the MVD for CD34 ($P = 0.001$) (Figs. 1A, 1B, and 2).

When assessing MVD using anti-CD105 staining, a few small, positively stained vessels were detected in the cellular-rich areas of PA (mean = 0.47, SD = 1.17), while in BCA the number of positive vessels was slightly higher, with them being widely spread throughout the entire tumor (mean = 4.69, SD = 3.22). A significant difference was also observed between the two groups of tumors ($P = 0.0001$) (Figs. 1C, 1D, and 2).

Lymphatic vessel density. In PA, D2-40-positive lymphatic vessels were mostly concentrated in the tumor capsules, with small intratumoral lymphatic vessels being infrequently observed (mean = 0.34, SD = 0.44) (Figs. 1E, 1F, and 2). The lymphatic vessels in BCA were also identified at the tumor margin, with a small increase observed in the number of intratumoral vessels compared to that of PA (mean = 1.83, SD = 1.53). Comparison of the two groups showed that the difference in LVD was significant ($P = 0.0004$).

Growth factor. VEGF positivity was observed in both the nuclei and cytoplasm. In PA, a remarkably heterogeneous VEGF immunoreactivity was observed, alternating from weak or negative to positive or intense. Immunoreactivity was most marked in the epithelial cells and rarely seen in mioepithelial cells. In 13 cases (43%), the cells were negative or showed less than 10% reactivity (score 0); 9 cases (30%) had a score of 1; 5 cases (17%) showed 25%–50% reactivity (score 2); and 3 cases (10%) scored 3 (Figs. 3C and 4).

All BCA tumors revealed a strong positivity to VEGF, with an immunoreaction of more than 50% (score 3) (Figs. 3D and 4). Immunoreactivity was observed in epithelial cells,

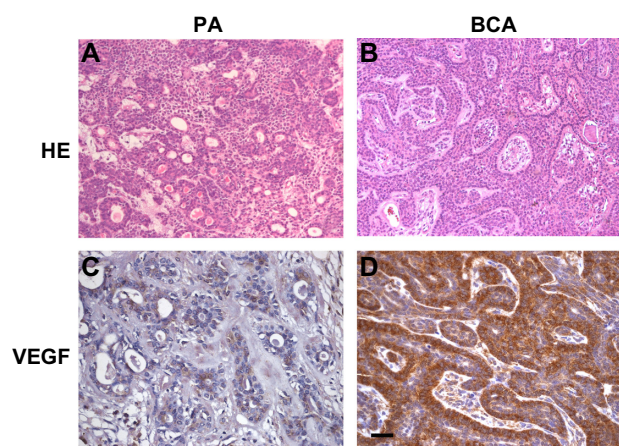


Figure 3. Histopathology of PA (A) and BCA (B). In PA, few tumor cells were weakly stained for VEGF (C), and in BCA strong positivity was detected for VEGF (D). Bars: A, B = 160 μ m; C, D = 80 μ m.

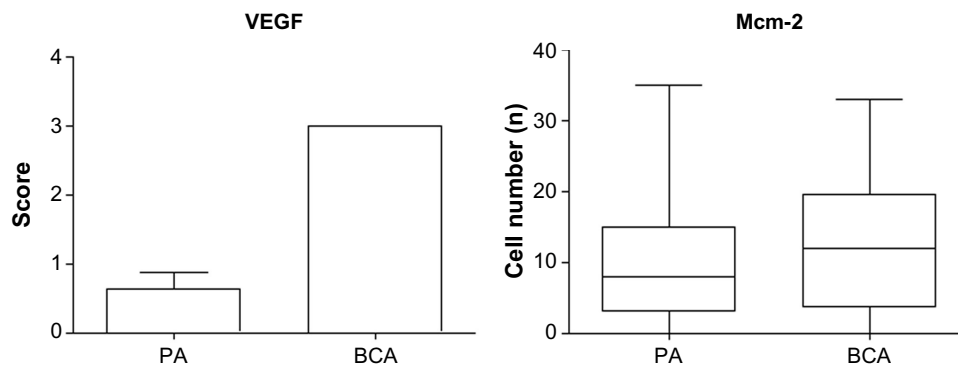


Figure 4. Box and whisker plots of VEGF and Mcm-2 expression in pleomorphic adenoma (PA) and basal cell adenoma (BCA) ($n = 30$ and 13 , respectively).

mostly in the basal layer. A significant difference was observed in VEGF positivity between PA and BCA ($P = 0.0001$).

Proliferative index. No or a small number of Mcm-2-positive cells were detected in both PA (mean = 13.23, SD = 11.63) and BCA (mean = 12.85, SD = 10.35). No significant difference was found between the Mcm-2 proliferative indexes of the tumors ($P = 0.9948$) (Fig. 2).

Discussion

The stromal microenvironment plays a critical role in tumor biology, with the blood and lymphatic vessels found within the tumor tissues being key components of the tumor microenvironment. Tumor-associated angiogenesis is an essential pathophysiological phenomenon for sustaining the viability of tumor cells during tumor progression.^{4,14,15} However, information is lacking on the role of angiogenesis and lymphatic distribution in benign tumors.

The role of angiogenesis in the onset and progression of salivary gland malignancies is well recognized,¹⁴ with an angiogenic switch having been reported during the malignant transformation of pleomorphic adenoma to carcinoma ex-pleomorphic adenoma.¹⁴ Previous studies from our group have shown that vascularization in PA is composed mainly of preexisting vessels in a positive correlation to the cellular density of the tumor, where the most cellular-rich areas have the highest vascular density.¹²

The present study detected a small increase in vascularization from preexisting vessels, with a greater increase in newly formed vessels in BCA compared to PA, which was observed in the comparison of the MVD obtained using CD34 and CD105. This difference could be attributed to the diversity of the stroma observed in PA tumor, in which high vascularization is not required in myxoid and chondroid areas. In contrast, BCA is a cellular-rich tumor containing minimal stroma – and hence the need for increased vascularity – and indicating that the preexisting vessels were insufficient for maintaining the tumor cells, thus requiring the formation of new vessels. These results confirm our previous studies, in which it was suggested that the degree of vascularization in benign salivary

tumors depends on cell density, most likely due to cellular-rich tumors requiring more oxygen in order to support metabolic demands.

The ability of tumor cells to induce angiogenesis varies greatly depending on the type of neoplastic cell.^{16,17} The angiogenic switch has been reported to be induced primarily by malignant cells^{14,16,18}; however the role of this switch is not well understood in benign tumors. The angiogenic switch can be analyzed by immunohistochemistry for CD105, which is expressed by proliferating endothelial cells, making CD105 a good marker for newly formed vessels.¹⁹ The current study detected few CD105-positive vessels in PA, indicating the absence of an angiogenic switch in this type of tumor. In contrast, CD105-positive vessels were detected more frequently in BCA, suggesting that an angiogenic switch was occurring in this benign tumor.

Some growth factors play a crucial role in the regulation of blood vessel formation, with VEGF-A (commonly named VEGF) being among these.^{20,21} In the present study, VEGF positivity confirms the presence of an increased vascularization in BCA when compared to PA.

Lymphatic vessels play an important role in maintaining fluid balance and tissue homeostasis, as well as being a noteworthy component of the immune system.²² Tumor research has focused on lymphatic vessels, as they represent the main route for metastases to the lymph nodes. However, the consequence of tumor-associated lymphangiogenesis in the viability of tumor cells is unclear.²³ A high lymphatic vessel density seems to be an indicator of the risk of lymph node metastasis in cutaneous melanoma, head and neck squamous cell carcinoma, and squamous cell carcinoma of the cervix.^{24,25} In contrast, no intratumoral lymphatic networks have been reported for other carcinomas, such as those of breast, ovarian, endometrial, and lung.^{26,27} No significant difference in lymphatic vessel density of high-risk salivary gland tumors and low/moderate-risk salivary gland carcinomas has been observed with regard to nodal metastasis.²⁸

The benign salivary gland tumors PA and recurrent pleomorphic adenoma have been reported to have very few,

if any, intratumoral lymphatic vessels,¹² with the present study finding similar results. However, this study did detect a small number of lymphatic vessels in BCA. The function of the lymphatic vessels is critically dependent upon the composition, geometry, and integrity of the extracellular matrix.²⁹ Therefore, in a previous study performed by our group, the stroma was suggested as a possible explanation for the absence of intratumoral lymphatic vessels in PA, in terms of it possibly collapsing the lymphatic vessels and/or pushing the preexisting vessels outside the tumor.^{2,12} Moreover, a possible explanation for the presence of more lymphatic vessels in BCA than PA found in the present study could be that BCA has a scarce stroma, in which these vessels are presented.

Although a difference in vascularization between PA and BCA was observed in the current study, the cell proliferation indices obtained using Mcm-2 staining were similar, indicating that both tumors have the same cell proliferation features. Indeed, PA and BCA have the same biological behavior in terms of slow growth and a low risk of recurrence or malignant transformation.^{1,3}

In conclusion, despite the fact that PA and BCA are considered part of the same spectrum of differentiation, these tumors are different with regard to vascularization, as demonstrated by immunohistochemistry for CD34, CD105, D2-40, and VEGF.

Author Contributions

Conceived and designed the experiments: ABS, AA, FPS, VCA. Analyzed the data: TRO, FOFR, ARS, DFS, STB, MHN, ABS. Wrote the first draft of the manuscript: ABS, VCA. Contributed to the writing of the manuscript: ABS, FPS, MHN, VCA. Agree with manuscript results and conclusions: All authors. Jointly developed the structure and arguments for the paper: ABS, AA, VCA. Made critical revisions and approved final version: ABS, AA, VCA. All authors reviewed and approved of the final manuscript.

REFERENCES

1. Auclair PL, Ellis GL. ARP Press Silver Spring, Maryland. *Tumors of Salivary Glands*. Washington, DC: 2008.
2. Nagao T, Eveson JW, Kusafuka K, Stenman G, Leon Barnes, John W. Eveson, Peter Reichart, David Sidransky eds. Pleomorphic adenoma. *Pathology and Genetics Head and Neck Tumours*. Lyon: IARC; 2005:256–60.
3. De Araujo VC. Basal cell adenoma. Leon Barnes, John W. Eveson, Peter Reichart, David Sidransky eds. *Pathology and Genetics Head and Neck Tumours*. Lyon: IARC; 2005:263–4.
4. Onimaru M, Yonemitsu Y. Angiogenic and lymphangiogenic cascades in the tumor microenvironment. *Front Biosci (Schol Ed)*. 2011;3:216–25.
5. Reis-Filho JS, Schmitt FC. Lymphangiogenesis in tumors: what do we know? *Microsc Res Tech*. 2003;60(2):171–80.
6. Maby-El Hajjami H, Petrova TV. Developmental and pathological lymphangiogenesis: from models to human disease. *Histochem Cell Biol*. 2008;130(6):1063–78.
7. Shieh YS, Hung YJ, Hsieh CB, Chen JS, Chou KC, Liu SY. Tumor-associated macrophage correlated with angiogenesis and progression of mucocystic carcinoma of salivary glands. *Ann Surg Oncol*. 2009;16(3):751–60.
8. Giagini C, Giagini A, Tsourouflis G, et al. MCM-2 and MCM-5 expression in gastric adenocarcinoma: clinical significance and comparison with Ki-67 proliferative marker. *Dig Dis Sci*. 2011;56(3):777–85.
9. Freeman A, Morris LS, Mills AD, et al. Minichromosome maintenance proteins as biological markers of dysplasia and malignancy. *Clin Cancer Res*. 1999;5(8):2121–32.
10. MacCallum DE, Hall PA. The location of pKi67 in the outer dense fibrillary compartment of the nucleolus points to a role in ribosome biogenesis during the cell division cycle. *J Pathol*. 2000;190(5):537–44.
11. Tachibana KE, Gonzalez MA, Coleman N. Cell-cycle-dependent regulation of DNA replication and its relevance to cancer pathology. *J Pathol*. 2005;205(2):123–9.
12. Soares AB, de Araujo VC, Juliano PB, Altmani A. Angiogenic and lymphangiogenic microvessel density in recurrent pleomorphic adenoma. *J Oral Pathol Med*. 2009;38(8):623–9.
13. Swelam W, Ida-Yonemochi H, Maruyama S, Ohshiro K, Cheng J, Saku T. Vascular endothelial growth factor in salivary pleomorphic adenomas: one of the reasons for their poorly vascularized stroma. *Virchows Arch*. 2005;446(6):653–62.
14. Soares AB, Juliano PB, Araujo VC, Metzke K, Altmani A. Angiogenic switch during tumor progression of carcinoma ex-pleomorphic adenoma. *Virchows Arch*. 2007;451(1):65–71.
15. Oliveira-Neto HH, Gleber-Netto FO, de Sousa SF, et al. A comparative study of microvessel density in squamous cell carcinoma of the oral cavity and lip. *Oral Surg Oral Med Oral Pathol Oral Radiol*. 2012;113(3):391–98.
16. Folkman J. Angiogenesis and apoptosis. *Semin Cancer Biol*. 2003;13(2):159–67.
17. Costa AF, Demasi AP, Bonfitto VL, et al. Angiogenesis in salivary carcinomas with and without myoepithelial differentiation. *Virchows Arch*. 2008;453(4):359–67.
18. Gupta MK, Qin RY. Mechanism and its regulation of tumor-induced angiogenesis. *World J Gastroenterol*. 2003;9(6):1144–55.
19. Duff SE, Li C, Garland JM, Kumar S. CD105 is important for angiogenesis: evidence and potential applications. *FASEB J*. 2003;17(9):984–92.
20. Bergers G, Hanahan D. Modes of resistance to anti-angiogenic therapy. *Nat Rev Cancer*. 2008;8(8):592–03.
21. Wehland M, Bauer J, Magnusson NE, Infanger M, Grimm D. Biomarkers for anti-angiogenic therapy in cancer. *Int J Mol Sci*. 2013;14(5):9338–64.
22. Teymoortash A, Schrader C, Shimoda H, Kato S, Werner JA. Evidence of lymphangiogenesis in Warthin's tumor of the parotid gland. *Oral Oncol*. 2007;43(6):614–18.
23. Alitalo K, Tammela T, Petrova TV. Lymphangiogenesis in development and human disease. *Nature*. 2005;438(7070):946–53.
24. Kyzas PA, Geleff S, Batistatou A, Agnantis NJ, Stefanou D. Evidence for lymphangiogenesis and its prognostic implications in head and neck squamous cell carcinoma. *J Pathol*. 2005;206(2):170–7.
25. Gombos Z, Xu X, Chu CS, Zhang PJ, Acs G. Peritumoral lymphatic vessel density and vascular endothelial growth factor C expression in early-stage squamous cell carcinoma of the uterine cervix. *Clin Cancer Res*. 2005;11(23):8364–71.
26. Williams CS, Leek RD, Robson AM, et al. Absence of lymphangiogenesis and intratumoural lymph vessels in human metastatic breast cancer. *J Pathol*. 2003;200(2):195–206.
27. Koukourakis MI, Giatromanolaki A, Sivridis E, et al. LYVE-1 immunohistochemical assessment of lymphangiogenesis in endometrial and lung cancer. *J Clin Pathol*. 2005;58(2):202–6.
28. Mello MF, Costa AF, Freitas LL, et al. Lymphatic vessel density and expressions of lymphangiogenic growth factors in salivary carcinomas. *Neoplasma*. 2011;58(4):331–6.
29. Skobe M, Detmar M. Structure, function, and molecular control of the skin lymphatic system. *J Invest Dermatol Symp Proc*. 2000;5(1):14–19.