

## ORIGINAL RESEARCH

# Short-term effect of elevated CO<sub>2</sub> concentration (0.5%) on mitochondria in diploid and tetraploid black locust (*Robinia pseudoacacia* L.)

Fuling Xu<sup>1\*</sup> | Mingquan Jiang<sup>1,2\*</sup> | Fanjuan Meng<sup>1</sup> <sup>1</sup>College of Life Science, Northeast Forestry University, Harbin, China<sup>2</sup>Jilin Province Product Quality Supervision and Inspection Institute, Changchun, China**Correspondence**Fanjuan Meng, College of Life Science, Northeast Forestry University, Harbin, China.  
Email: mfj19751@163.com**Funding information**

The Fundamental Research Funds for the Central Universities, Grant/Award Number: 2572016EAJ4 and 2572015DA03; the National Natural Science Foundation of China, Grant/Award Number: 31360073

**Abstract**

Recent increases in atmospheric CO<sub>2</sub> concentration have affected the growth and physiology of plants. In this study, plants were grown with 0.5% CO<sub>2</sub> for 0, 3, and 6 days. The anatomy, fluorescence intensity of H<sub>2</sub>O<sub>2</sub>, respiration rate, and antioxidant activities of the mitochondria were analyzed in diploid (2×) and tetraploid (4×) black locust (*Robinia pseudoacacia* L.). Exposure to 0.5% CO<sub>2</sub> resulted in clear structural alterations and stomatal closure in the mitochondria. Reduced membrane integrity and increased structural damage were observed in 2× plants at 6 days. However, after 0.5% CO<sub>2</sub> treatment, little structural damage was observed in 4× plants. Under severe stress, H<sub>2</sub>O<sub>2</sub> and malondialdehyde were dramatically induced in both 2× and 4× plants. Proline remains unchanged at an elevated CO<sub>2</sub> concentration in 4× plants. Moreover, the total respiration and alternative respiration rates decreased in both 2× and 4× plants. In contrast, the cytochrome pathway showed no decrease in 2× plants and even increased slightly in 4× plants. The antioxidant enzymes and nonenzymatic antioxidants, which are related to the ascorbate–glutathione pathway, were inhibited following CO<sub>2</sub> exposure. These analyses indicated that 4× and 2× plants were damaged by 0.5% CO<sub>2</sub> but the former were more resistant than the latter, and this may be due to increases in antioxidant enzymes and nonenzymatic antioxidants and stabilized membrane structure.

**KEYWORDS**0.5% CO<sub>2</sub>, mitochondria, *Robinia pseudoacacia* L.

## 1 | INTRODUCTION

Currently, due to anthropogenic activity, CO<sub>2</sub> concentrations have increased since the pre-industrial period from 280 to 401.85 μmol/mol (NOAA-ESRL; 2014, M. Lambrea 2005). Many reports have estimated that this value will increase to 1000 ppm by the end of

the century if no corrective measures are undertaken to constrain emissions (IPCC, 2014). In general, elevated CO<sub>2</sub> concentrations (EC) directly affect crop yield in many species by increasing carboxylation efficiency, enhancing intercellular CO<sub>2</sub> concentration, and reducing photorespiration (Bowes, 2003; Sharkey, 1985; Stiling et al., 2013). Furthermore, C<sub>3</sub> and C<sub>4</sub> plants respond differently to CO<sub>2</sub>. According to early reports, elevated CO<sub>2</sub> concentrations will most probably favor C<sub>3</sub> plant types than C<sub>4</sub> because currently, the concentration of

\*These authors contributed to this work equally.

CO<sub>2</sub> in the atmosphere is inadequate to saturate the ribulose-1,5-bisphosphate carboxylase (RuBisCO) enzyme that drives photosynthesis in C<sub>3</sub> plants (Taiz & Zeiger, 1991). In comparison, C<sub>4</sub>-type plants are likely to respond less to elevated CO<sub>2</sub> levels as they possess an innate concentrating mechanism that increases CO<sub>2</sub> level at the site of RuBisCO to 2,000 ppm. Moreover, studies have indicated that EC affects rise of tiller number, net photosynthetic rate, and morphology, as well as yield enhancement (Hasegawa et al., 2013; Liu et al., 2008; Shimono et al., 2009). To date, variability in plant respiration has been observed and the underlying mechanism has been elucidated (Hu et al., 2006). While plant growth, development, and function in increased CO<sub>2</sub> concentrations have been extensively researched (Zinta et al., 2014), the effects of elevated CO<sub>2</sub> on the ultrastructure and function of mitochondria in polyploid plants are relatively unknown.

Tetraploid black locust (*Robinia pseudoacacia* L.) (TBL) is native to Korea. This species is cultivated for its wood throughout the world (Isely & Peabody, 1985). Its leaves are rich in many types of vitamins and minerals, which can be used for the food industry. Moreover, TBL can tolerate abiotic stresses, such as drought, salt, and low temperature (Joshi, Bourges-Sévenier, Russell, & Mo, 2012). Its bark and roots can be used for drug development and disease treatment due to its abundance of flavonoids (Garlock, Yi, Balan, & Dale, 2012). Because of its rapid growth and pleasant fragrance, TBL has been cultivated as a useful component of secondary forests in gardens and on roads. However, the response of TBL to high concentrations of CO<sub>2</sub> has not been elucidated.

Many polyploid plants have a higher tolerance to environmental stresses than their diploid counterparts (Meng, Pang, Huang, Liu, & Wang, 2012). Conversely, research has shown that the volume of organelles in polyploid plants is greater than that in their corresponding diploid relatives. Nevertheless, mitochondria are ultimately responsible for oxidative phosphorylation in metabolic processes (Plaxton & Podestá, 2006) and are sensitive to various abiotic stresses (Halliwell & Gutteridge, 1981). Mitochondria are the primary cellular organelles that respond to elevated CO<sub>2</sub> levels, which has been the topic of extensive research. While the acute response of plants to elevated CO<sub>2</sub> has been studied, the precise mechanism by which EC affects mitochondria in polyploid woody plants is presently unknown. In particular, understanding the basis for this variation in polyploid woody plants exposed to rising CO<sub>2</sub> concentrations is important for further selection and development of elevated [CO<sub>2</sub>]-responsive crop lines.

CO<sub>2</sub> as a abiotic factor can affect plant growth and development. Previous studies have suggested that changes in morphology and photosynthesis may be related to high CO<sub>2</sub>. However, little or no work has been performed to investigate black locust responses to high CO<sub>2</sub>. In this study, the effect of elevated concentrations of CO<sub>2</sub> on the anatomy, respiration, and antioxidant activity of diploid (2×) and tetraploid (4×) plants was studied after the plants were exposed to 0.5% CO<sub>2</sub> for 0 (up) and 6 (down) days. Based on this analysis, we increased our understanding of the mechanism underlying the CO<sub>2</sub> response and tolerance of plants to environmental stress.

## 2 | MATERIALS AND METHODS

### 2.1 | Plant growth

All materials were obtained from the Beijing Forest University and were introduced directly from Korea to China. Diploid (2×) and tetraploid (4×) black locust (*Robinia pseudoacacia* L.) plants were cultivated in plastic pots (10 cm<sup>2</sup>). When the plants were 2 months of age, they were treated with 0.5% CO<sub>2</sub> in high-performance CO<sub>2</sub>-controlled growth chambers (Huanghua Faithful Instrument Co., Ltd. Hebei, China) (0.5%, control and treated) (light/dark 16 hr/8 hr, at temperatures of 35/25°C, 50/60% humidity and 250 μmol photons/m<sup>2</sup>/s light). After 0, 3, and 6 days of exposure to 0.5% CO<sub>2</sub> treatment, leaves were randomly harvested and stored at -80°C.

### 2.2 | Stomatal aperture and chloroplast ultrastructure

Fresh leaf sections (1 cm<sup>2</sup>) were immediately fixed in 3% glutaraldehyde in 0.1 M phosphate buffer at 4°C for 2 hr and thoroughly washed in cacodylate buffer (0.1 M, pH 6.8) twice, with 10-min intervals between each washing. They were then dehydrated in a graded ethanol series (30%, 50%, 70%, 80%, 90%, 90.5%, and 100%) with 10 min each time, and the 100% ethanol wash was repeated twice. After dehydration, the samples were further dried in acetone and embedded in an Epon-Araldite mixture. For scanning electron microscopy (SEM), the samples were pasted to copper stubs with colloidal silver and were sprayed with 50 nm gold. Then, the samples were observed and photographed using a scanning electron microscope (JSM-5310LV, Japan). The stomatal aperture size was calculated using ImageJ 1.4.7 software (ImageJ, Bethesda, MD, USA).

### 2.3 | Determination of H<sub>2</sub>O<sub>2</sub> in guard cells

Detection of H<sub>2</sub>O<sub>2</sub> in guard cells was performed as previously described by Comai (2005). H<sub>2</sub>O<sub>2</sub> generation in the stomata was assessed with H<sub>2</sub>DCF (2, 7-dichlorodihydrofluorescein diacetate), a specific fluorescence probe for H<sub>2</sub>O<sub>2</sub>. The young leaves were harvested after 0, 3, and 6 days of 0.5% CO<sub>2</sub> treatments from both 2× and 4× plants. The young epidermal strips were incubated in 10 mM MES-KCL buffer (pH 7.2). Then, 50 μM H<sub>2</sub>DCF was added at room temperature and incubated for 20 min in the dark. The leaves were rinsed with MES buffer twice to remove the additional fluorescence detector. The fluorescence of the H<sub>2</sub>O<sub>2</sub> probe was measured with an Axioskop 2 plus microscope (Zeiss) (excitation wavelengths of 488 nm).

### 2.4 | Respiration measurements

Leaf respiration was measured at room temperature using a Clark oxygen electrode (Hansatech, England) that was inserted into a 2-ml cuvette on a magnetic stirrer. The data were collected by a computer. The leaf tissues (0.1 g) were sliced (1 mm<sup>2</sup>) and submerged in incubation buffer (2 mM CaCl<sub>2</sub>, 10 mM HEPES, and 10 mM MES, pH 7.2).

The slices were continuously stirred to dissolve the oxygen. Alternative respiration (alt) was sensitive to SHAM, and cytochrome respiration (cyt) was sensitive to  $\text{NaN}_3$ . To distinguish between alt respiration and the cyt respiration, we added 5 mM SHAM and 0.1 mM  $\text{NaN}_3$  to the suspension, respectively. The rate of respiration was surveyed at 5 min in the presence of inhibitors. We then calculated the percentage inhibition of the total respiration rates.

## 2.5 | Isolation of mitochondria

The plant leaves (1.5 g) were harvested, and the mitochondria were isolated using an extraction buffer that contained 20 mM EDTA, 50 mM HEPES/KOH (pH 7.5), 30 mM Na ascorbate, 5 mM hexanoic acid, 10 mM NaCl, 0.3 M sucrose, 1% (w/v) PVP, 10 mM  $\beta$ -mercaptoethanol, and 0.3% BSA (w/v). After filtration through six layers of Miracloth, the crude material was filtered and collected. Then, the homogenate was centrifuged at 4,000 r/min for 10 min. The supernatant was centrifuged at 10,000 r/min for 10 min. The pellet was resuspended in washing buffer 20 mM HEPES/KOH (pH 7.8), 330 mM sorbitol, 10 mM NaCl, 2 mM EDTA, and 5 mM Na ascorbate] and centrifuged for 20 min at 4000 r/min. Then, the supernatant was centrifuged at 10,000 r/min for 10 min. The intact mitochondria were collected, washed, and centrifuged at 12,000 r/min for 20 min in PBS.

## 2.6 | Antioxidant enzyme activity in mitochondria

Ascorbate peroxidase (EC 1.11.1.11) was examined at 290 nm according to the method of Nakano and Asada (1980). The reaction mixture contained 5 mM ascorbic acid (AsA), 50  $\mu\text{l}$  enzyme extract, 0.2 M phosphate buffer (pH 6.8), and 2 mM  $\text{H}_2\text{O}_2$ . The MDHAR activity (monodehydroascorbate reductase 1.6.5.4) was determined spectrophotometrically by monitoring the change in 340 nm. The reaction mixture contained 0.1 mM NADH, 0.1 mM AsA, and 0.55 U AAO, 50  $\mu\text{l}$  enzyme extract, and 0.2 M phosphate buffer (pH 6.8). DHAR (EC 1.8.5.1) activity was measured following the method of Dalton and Evans (1986) at 265 nm. The glutathione reductase activity was assayed at 340 nm following Madamanchi and Alscher (1991). The reaction mixture contained 10 mM GSSG, 2 mM NADPH, 50  $\mu\text{l}$  enzyme extract, and 0.2 M phosphate buffer (pH 6.8).

## 2.7 | Analysis of $\text{H}_2\text{O}_2$ , MDA, and proline

$\text{H}_2\text{O}_2$  was analyzed according to Sergiev et al. (1997). The absorbance of the supernatant was measured at 390 nm, and the  $\text{H}_2\text{O}_2$  concentration was obtained using a standard curve. For measurement of malondialdehyde (MDA) content, 1.5 g fresh leaf was homogenized with 0.1% trichloroacetic acid (TCA). After centrifugation at 12,000 r/min for 10 min, 1 ml of the supernatant was collected and mixed with 2 ml 0.5% thiobarbituric acid (TBA). Then, the mixtures were heated in boiling water (100°C) for 30 min. The homogenate was centrifuged at 12,000 r/min for 5 min. The absorbance changes at 450, 532, and 600 nm were monitored at 25°C. Proline content was measured following the method of Kong et al.

(2014), with minor modifications. The leaves (1.5 g) were extracted in 3% sulfosalicylic acid in a mortar and pestle at 4°C. After incubation at 100°C for 10 min, 1.5 ml of ninhydrin reagent (2.5% ninhydrin, 60% glacial acetic acid, and 40% 6 M phosphoric acid) and 1 ml of glacial acetic acid were added to 1 ml of the leaf extract at room temperature. The mixture was heated again in boiling water (100°C) for 30 min. Then, 3 ml of toluene was added, and the sample was incubated on an ice bath for 1 hr. The absorbance change was monitored at 520 nm.

## 2.8 | Measurements of nonenzymatic antioxidants

Total AsA content (AsA+DHA) was determined using a modified protocol from Law, Charles, and Halliwell (1983). Briefly, 1.5 g of leaf sample was homogenized with 0.5% sulfosalicylic acid, and the supernatants were obtained by centrifugation for 20 min (12,000 r/min; 4°C). Then, 10 mM DTT and 0.5% N-ethylmaleimide were added to 0.1 ml extract. After the sample was mixed for one minute, 0.7 ml double-distilled water, 4%  $\alpha'$ -dipyridyl in 70% ethanol, 10% trichloroacetic acid and 44% phosphoric acid were successively added to the mixture. Then, the mixture was heated to 40°C for 40 min. Then, 3%  $\text{FeCl}_3$  was added. The absorbance was measured at 525 nm. AsA content was determined as total AsA, with the exception of 10 mM DTT and 10 mM N-ethylmaleimide.

The total content of reduced glutathione (GSH+GSSG) was measured as described previously Ellman (1959). Briefly, 100  $\mu\text{l}$  of the extract was incubated with 100 mM PBS, 0.6 mM DTNB, and 2 mM NADPH for 10 min at 25°C. The reduced glutathione content (GSH) was measured at 412 nm as total reduced glutathione, with the exception of 2 mM NADPH.

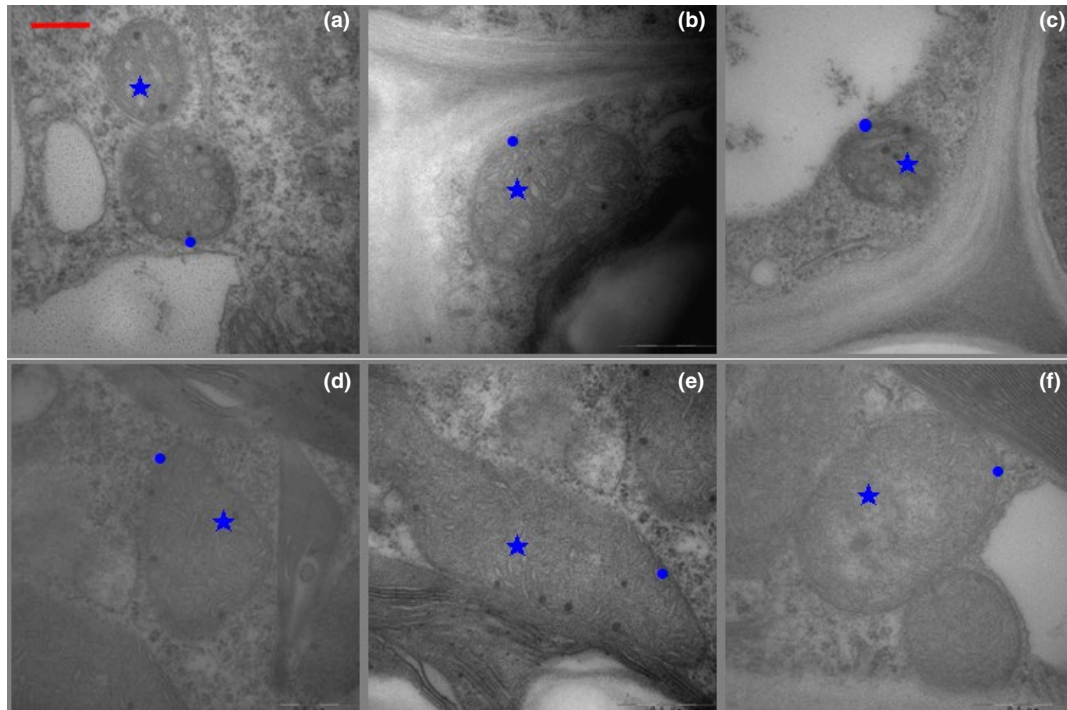
# 3 | RESULTS

## 3.1 | Mitochondrial ultrastructure

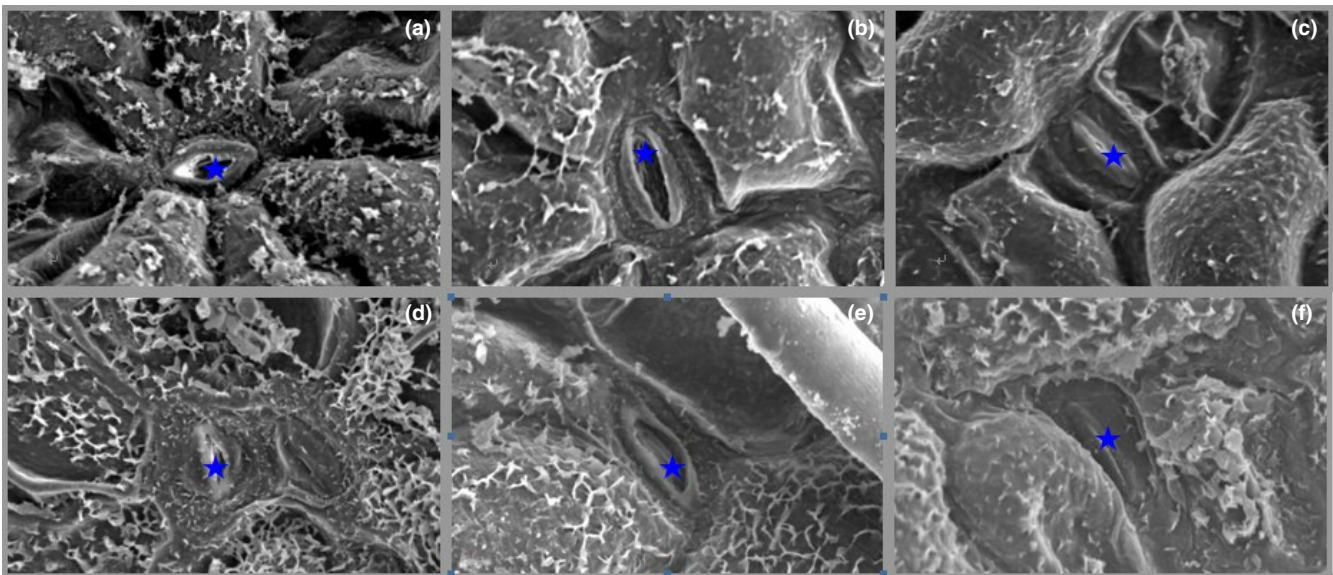
The 0.5%  $\text{CO}_2$  treatments induced notable disturbances in mitochondrial morphology. The mitochondrial ultrastructure of the 2 $\times$  and 4 $\times$  plants is shown in Figure 1. The oval or rounded mitochondrial ultrastructure was elongated, sometimes branched, or dumbbell shaped (Figure 1a,d); however, mitochondrial membranes and cristae after 3 days of 0.5%  $\text{CO}_2$  displayed minor injuries in the 2 $\times$  plants (Figure 1b) compared with those of the 4 $\times$  plants (Figure 1e). In the 2 $\times$  plants, another set of mitochondria had a low number of cristae and large electron-transparent areas in the matrix (Figure 1c) after 6 days of 0.5%  $\text{CO}_2$ . Conversely, after the 0.5%  $\text{CO}_2$  stress treatments for 6 d, mitochondria in the 4 $\times$  plant leaf mesophyll cells showed less damage (Figure 1f) than those of the 2 $\times$  plants.

## 3.2 | Stomata morphology

Figure 2a,d shows a typical SEM image of the 2 $\times$  and 4 $\times$  plant stomata structure. Stomatal openings in the leaves of 2 $\times$  plants that were exposed to  $\text{CO}_2$  for 3 days were fewer than those of the



**FIGURE 1** Transmission electron micrographs of mitochondria in 2× (a–c) and 4× (d–f) plants that were grown under 0.5% CO<sub>2</sub> conditions at 0, 3, and 6 days. 2×, diploid black locust; 4×, tetraploid black locust; Five-pointed star (★), mitochondrial cristae; ball (●), membranes of mitochondria. Bar = 5 μm



**FIGURE 2** Transmission electron micrographs of stomata in 2× (a–c) and 4× (d–f) plants that were grown in 0.5% CO<sub>2</sub> conditions at 0, 3, and 6 days. Five-pointed star (★), stomata. Bar = 5 μm

control (Figures 2b, 3). At the same time, exposure to the gaseous CO<sub>2</sub> for 6 days resulted in total closure of the 2× plant leaves (Figure 2c). Interestingly, in the 4× plants, 0.5% CO<sub>2</sub> induced the complete closure of guard cells after 3 days (Figure 2e,f). Figure 3 shows significant changes in the degree of stomatal opening in the 4× plants. In contrast, there was no significant change in the 2× plants.

### 3.3 | Fluorescence intensity of H<sub>2</sub>O<sub>2</sub>

As expected, after 0.5% CO<sub>2</sub> exposure, accumulation of H<sub>2</sub>O<sub>2</sub> in the 4× plants was greater than that in the controls (Figure 4). During the treatment, H<sub>2</sub>O<sub>2</sub> levels increased gradually at 3 and 6 days in the 2× plants (Figure 4). The relative fluorescence intensities of the 2× plants after 6 days of CO<sub>2</sub> stress was approximately 3.6-fold that of the

control (Figure 4). Moreover, accumulation of  $H_2O_2$  was significantly increased after 3 days of exposure to 0.5%  $CO_2$  in 4 $\times$  plants compared to that of 2 $\times$  plants (Figure 4).

### 3.4 | Changes in $H_2O_2$ , MDA, and proline

MDA was induced by 48.24% and 31.4% after 3 and 6 days of stress, respectively (Figure 5b). Proline content in the 2 $\times$  plants was significantly enhanced by 70.2% after  $CO_2$  stress for 6 days (Figure 5c); however, these values were similar in the 4 $\times$  plants between the control and treatment (Figure 5b,c). Moreover, the accumulation of  $H_2O_2$  in 2 $\times$  plants after 6 days increased to 31.1% that of the CK (Figure 5a). Furthermore,  $H_2O_2$  content in 4 $\times$  plants increased by 13.79% under severe stress (Figure 5a).

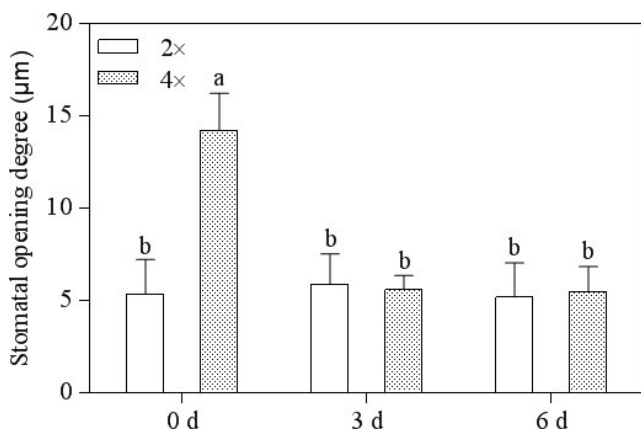
### 3.5 | Leaf respiration rate

To investigate the effects of high concentrations of  $CO_2$  on plant respiration, we measured leaf respiration at 0, 3, and 6 days. As shown in Figure 6a, total respiration of the plants was temporarily increased

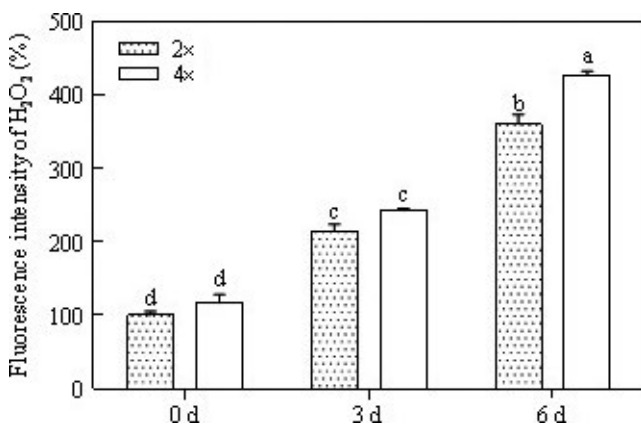
at 3 days under elevated  $CO_2$  compared to that at 6 days in 4 $\times$  plants. In contrast, this ratio was decreased in 2 $\times$  black locust plants under stress conditions (Figure 6a). The total respiration decreased to 51.9% and 41.6% in 2 $\times$  and 4 $\times$  plants, respectively (Figure 6a). Conversely, the alt respiration of 4 $\times$  plants was slightly induced initially and clearly decreased at 6 days; however, 2 $\times$  plants that were grown under  $CO_2$  stress conditions showed a significant decrease in alt respiration rate from 0 to 6 days (Figure 6b). The responses of plant cyt respiration to  $CO_2$  were also explored (Figure 6c). There were no significant changes in 2 $\times$  plants compared with those in 4 $\times$  plants, which showed a substantial alteration. The change in trend of residual respiration was similar to that of alt respiration in black locust leaves (Figure 6d).

### 3.6 | The AsA/GSH antioxidant defense system

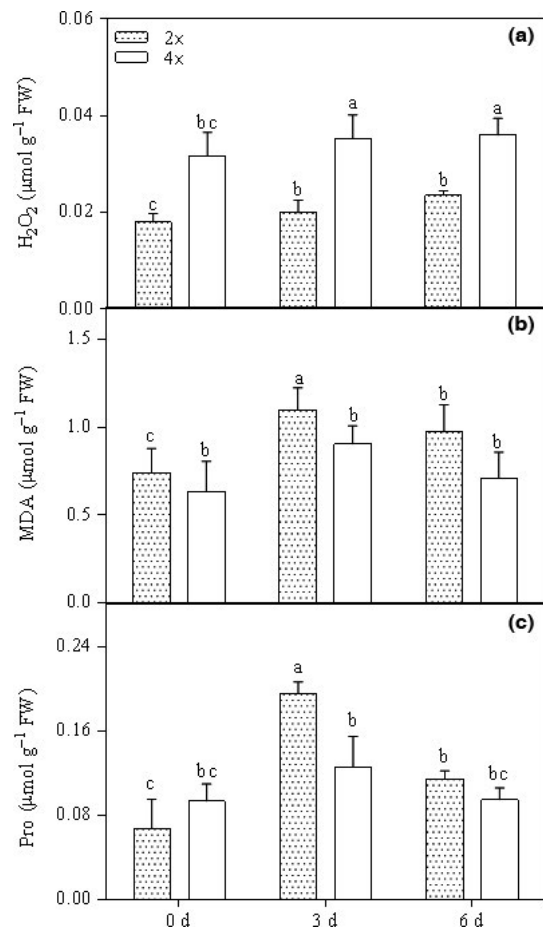
DHAR activity was significantly reduced at the beginning of stress in both the 2 $\times$  and 4 $\times$  plants (Figure 7e). AsA levels significantly decreased under 0.5%  $CO_2$  conditions in both the 2 $\times$  and 4 $\times$  plants (Figure 7c). Interestingly, changes in GSH were notable at 6 days after



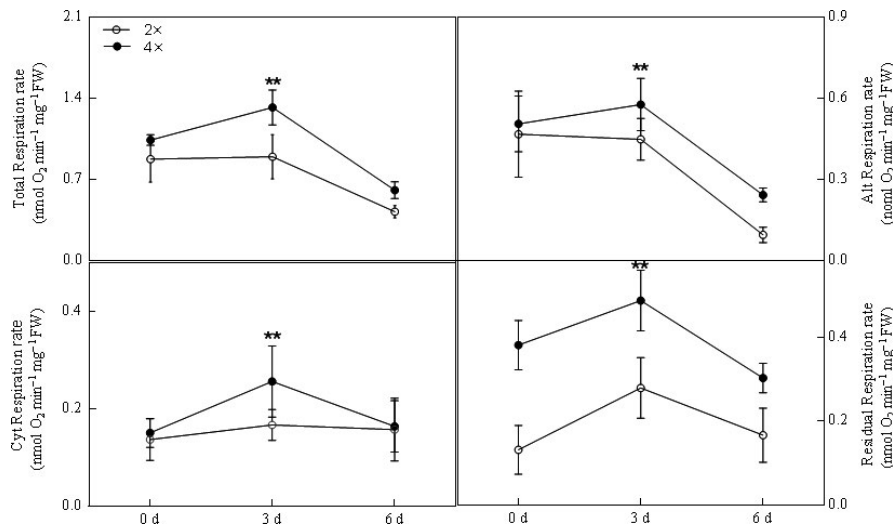
**FIGURE 3** Effect of 0.5%  $CO_2$  on stomatal opening degree in 2 $\times$  and 4 $\times$  ( $p < .05$ )



**FIGURE 4** Scanning fluorescence intensity of  $H_2O_2$  in mitochondria of leaves in 2 $\times$  and 4 $\times$  plants that were grown in 0.5%  $CO_2$  conditions for 0, 3, and 6 days ( $p < .05$ ). a, b, c and d shows the results of the significance analysis



**FIGURE 5** Hydrogen peroxide (a), malondialdehyde (b), and proline (c) contents of the leaves in mitochondria of leaves in 2 $\times$  and 4 $\times$  plants that were grown in 0.5%  $CO_2$  conditions for 0, 3, and 6 days ( $p < .05$ ). a, b, c and d shows the results of the significance analysis



**FIGURE 6** Leaves respiratory responses following various days under 0.5% CO<sub>2</sub> conditions in 2x and 4x plants at 0, 3, and 6 days. Asterisks indicate significant differences on each day after treatment (\*\**p* < .01). (a) Total respiration of 2x and 4x plants at 0, 3, and 6 days, respectively; (b) Alt (alternative) respiration of 2x and 4x plants at 0, 3, and 6 days, respectively; (c) Cyt (cytochrome) respiration of 2x and 4x plants at 0, 3, and 6 days, respectively; (d) Residual respiration of 2x and 4x plants at 0, 3, and 6 days, respectively

0.5% CO<sub>2</sub> treatment (Figure 7g). The APX and GR activities decreased moderately in 2x plants under stress conditions but were not significantly changed in 4x plants (Figure 7a,f). Increased CO<sub>2</sub> reduced the APX activities in 2x and 4x plants by 38.4% and 39.1%, respectively (Figure 7a). Furthermore, the GR activity gradually declined by 42.0% and 44.5% in 2x and 4x plants, respectively (Figure 7f). MDHAR was not significantly altered by elevated CO<sub>2</sub> in 4x plants, but it was significantly decreased in 2x plants (Figure 7b). In addition, stress significantly impacted GR, APX, and MDHAR activity in 4x plants. Elevated CO<sub>2</sub> had little effect on DHAR in 4x plants, but it was notably reduced in 2x plants.

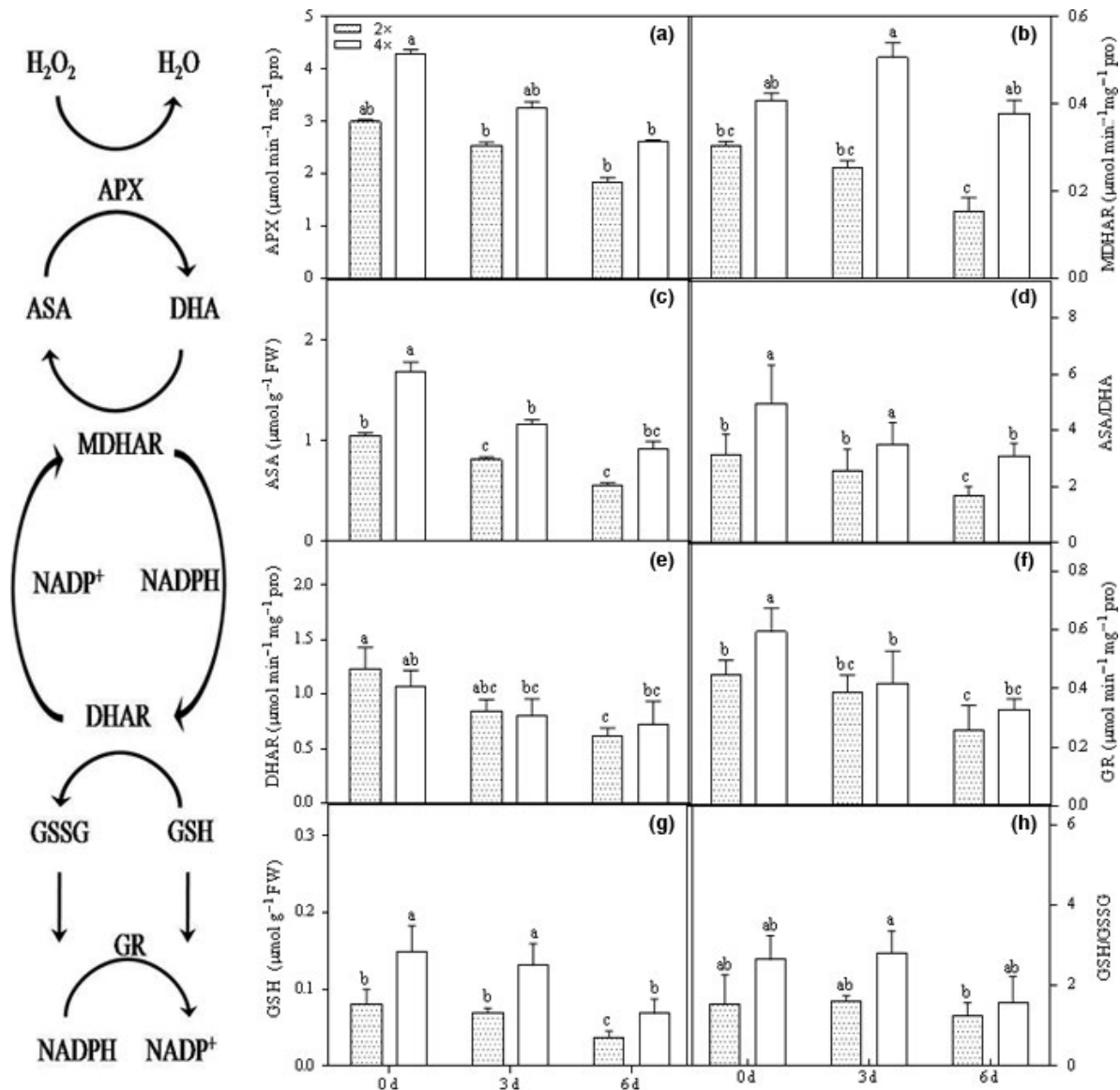
#### 4 | DISCUSSION

Due to anthropogenic carbon emissions and ecosystem processes, excessive CO<sub>2</sub> has been released into the atmosphere. This is predominantly due to cement production, fossil fuel burning, and land-use change (Leakey et al., 2009) resulting in climate change and dramatic increases in the CO<sub>2</sub> concentration. The changing CO<sub>2</sub> concentration has a vital role in plant growth and development. Many reports have shown that TBL is highly tolerant to environmental stresses (Li et al., 2009; Podda et al., 2013; Yuan, Liu, Fang, Yang, & Mu, 2009). Moreover, polyploidy induction was used as an important method to assess plant physiological mechanisms under severe conditions (Comai, 2005; Woode et al., 2009). To date, few studies have examined the effects of a high concentration of CO<sub>2</sub> on TBL. Thus, the plant responses to 0.5% CO<sub>2</sub> were investigated in this study.

Generally, plants exposed to high concentrations of CO<sub>2</sub> generate excess excitation pressure, which can supply electrons in excess of that required for CO<sub>2</sub> fixation (Asada, 1999; Murchie & Niyogi, 2011). This results in the formation and accumulation of reactive oxygen species (H<sub>2</sub>O<sub>2</sub>, ·OH and O<sub>2</sub><sup>·-</sup>) (Tausz-Posch et al., 2013). In the current study, H<sub>2</sub>O<sub>2</sub> content was detected in both 2x and 4x plants and was shown to significantly increase at 3 days under stress conditions

(Figure 4). At the same time, a higher H<sub>2</sub>O<sub>2</sub> content was observed in the leaves at 4x plants (Figure 4) compared that in the leaves of 2x plants (Figure 4) in 0.5% CO<sub>2</sub> conditions. The hormone abscisic acid (ABA) is induced by stress and activates NADPH oxidase to generate H<sub>2</sub>O<sub>2</sub> in guard cells (Sridharamurthy et al., 2014). In particular, H<sub>2</sub>O<sub>2</sub> can control the activity of outward/inward-rectifying K<sup>+</sup> channels, enhance guard cell Ca<sup>2+</sup> concentrations, and induce cytosolic alkalization, which results in stomatal closure through trigger water efflux (Brearley, Venis, & Blatt, 1997; Felle & Hanstein, 2002; Raschke, Shabahang, & Wolf, 2003). Stomata on the leaf surface continuously regulate gas exchange by a sophisticated mechanism in response to environmental changes. In this study, 2x plant stomatal closure was observed at 6 days and 4x plant closure was observed after 3 days (Figure 2c,e). Stomatal closure may represent a protective response to abiotic stress. We found that 4x plants responded more rapidly to the stress than did 2x plants, which can decrease the CO<sub>2</sub> flowing into the leaves (Figure 3). The degree of stomatal opening significantly decreased in 4x plants at 3 days compared to that of 2x plants (Figure 3). Similar responses have been reported for adaptation to other stress conditions, including drought, cold, salinity, and carbon monoxide (He & He, 2014; Himmelbach, 1998; Hubbard, Nishimura, Hitomi, Getzoff, & Schroeder, 2010).

Mitochondria act as sensors, initiate stress responses in plant, and are major producers of ROS (Nomura et al., 2012; Suzuki, Koussevitzky, Mittler, & Miller, 2011; Vanlerberghe, 2013). Under abiotic stress conditions, ROS were generated and accumulated in the guard cells, inducing both cellular damage and protective responses (Wu et al., 2013). In this report, the 0.5% CO<sub>2</sub> stress treatments induced notable disturbances in mitochondrial structure (Figure 1). Ultrastructural observations of the mitochondria showed that the cristae in 2x plants were reduced under severe stress and appeared empty, similar to vacuoles (Figure 1b,c), compared with those of the control (Figure 1a). Additionally, nonenzymatic activity has an important role in scavenging ROS in all plant cells. MDA and proline are the most important molecules that regulate and adapt to environmental stress in plants and were significantly increased in 2x



**FIGURE 7** Responses of ASA/GSH defense. Responses of the ascorbate/glutathione (ASA/GSH) defense in 2 $\times$  and 4 $\times$  plants under CO<sub>2</sub> conditions. Line graphs represent, (a) ascorbate peroxidase (APX) activity; (b) monodehydroascorbate reductase (MDHAR) activity; (c) reduced ascorbate (ASA) levels; (d) ascorbate redox status (ASA/DHA); (e) dehydroascorbate reductase (DHAR) activity; (f) glutathione reductase (GR) activity; (g) reduced glutathione levels (GSH); (h) glutathione redox status (GSH/GSSG) ( $p < .05$ ). a, b, c and d shows the results of the significance analysis

plants (Figure 5b,c). In parallel with the H<sub>2</sub>O<sub>2</sub> accumulation, MDA, which is an indicator of oxidative damage to the membranes, and mitochondrial membranes showed alterations in several regions of the 2 $\times$  plants after 6 days at CO<sub>2</sub> treatment (Figure 1c). In contrast to the 2 $\times$  plants, the 4 $\times$  plants showed fewer mitochondrial changes during stress (Figure 1e,f), which indicates that 4 $\times$  plants are more resistant to CO<sub>2</sub> stress than 2 $\times$  plants. A recent study suggested that changes in mitochondrial morphology are early indicators that cells are affected by ROS (Grigorova et al., 2013).

Vassileva et al. reported that stress can promote mitochondrial inner membrane permeabilization. Plant mitochondria possess a branched electron transport chain (Kühn et al., 2015). The plant inner mitochondria membrane contains both the SHAM-resistant cyt pathway and the KCN-resistant alt pathway. Abiotic stress had direct

effects on mitochondrial respiration. Previous studies have shown that the respiration rate varies following different environment stresses (Hu et al., 2006). In the present study, 0.5% CO<sub>2</sub> treatment partly induced stomatal closure in both 2 $\times$  and 4 $\times$  plants. Therefore, the rate of total respiration decreased to 51.90% and 41.59% in both 2 $\times$  and 4 $\times$  plants, respectively (Figure 6a). A similar trend was observed in the alt respiration rate, which decreased by 79.47% and 51.96% in both 2 $\times$  and 4 $\times$  plants, respectively (Figure 6b). Compared to the substantial decrease in the rate of the alt respiration, the cyt pathway showed no decrease in 2 $\times$  plants and increased slightly in 4 $\times$  plants (Figure 6c). The alt respiration in 4 $\times$  plants showed a notable increase compared to that in 2 $\times$  plants at 3 days. However, the values in both 2 $\times$  and 4 $\times$  plants significantly decreased under elevated CO<sub>2</sub> (0.5%; Figure 6b). According to previous reports, the

alt pathway in plant mitochondria can dissipate excessive ROS under abiotic and biotic stresses (Moller, 2001; Siedow & Umbach, 1995). These results indicate that the alt pathway can suppress the production of ROS due to short-term CO<sub>2</sub> stress (3 days; Figure 6b). Temporary increases in the alt pathway have been suggested as an adaptive feature of plants exposed to stress (McNulty & Cummins, 1987). However, the mitochondrial membrane was damaged by exposure to 0.5% CO<sub>2</sub> for a longer period of time (6 days) in both 2× and 4× plants (Figure 1c,f). Furthermore, excessive ROS in the mitochondria damage one of the most vital cellular components: proteins/enzymes, which have an important role in plant growth and the antioxidant system. After the treatment, cyt respiration was not affected and was thus less sensitive to CO<sub>2</sub> than was alt respiration in black locust leaves (Figure 6c).

Under stress conditions, the AsA/GSH pathway is one of the major ROS detoxifying systems in the cytosol. This cycle consists of APX-, AsA-, GSH-, and the AsA/GSH-regenerating enzymes, including MDHAR, DHAR, and GR (Noctor, 2009) (Figure 7). In this cycle, H<sub>2</sub>O<sub>2</sub> is reduced to H<sub>2</sub>O by APX, and AsA is oxidized to DHA. Thus, DHA is converted to AsA by DHAR, which catalyzes GSH to GSSH, or the NADPH-dependent MDHAR enzyme. GR catalyzes the formation of GSH by reducing GSSG. In our experiment, APX and GR were significantly inhibited under stress conditions in 4× plants (Figure 7a,f). Inhibition of APX activity may promote accumulation of H<sub>2</sub>O<sub>2</sub>, which can be determined by MDA content. AsA content was notably reduced after 3 days of stress (Figure 7c). Moreover, the inhibition of GR activity also resulted in a decreased pool of GSH in both 2× and 4× plants (Figure 7f,g). DHAR activity was not changed in 4× plants and decreased in 2× plants following CO<sub>2</sub> stress (Figure 7e). The GSH/GSSG ratio was increased in 4× plants but did not change in 2× plants (Figure 7h). We also observed that this is a consistent protective response to stress. AsA is a vital nonenzymatic antioxidant in plant cells that eliminates excessive ROS and thus maintains the activity of antioxidant enzymes and stabilizes membrane structure. All results suggested that the 4× plants were more tolerant to CO<sub>2</sub> than were the 2× plants.

Another study showed that AsA and GSH levels substantially decreased under heat and drought stresses and that the AsA redox status was also higher in elevated CO<sub>2</sub>-grown plants. Conversely, the antioxidant system was not significantly changed following CO<sub>2</sub> treatments (730 ppm) (Zinta et al., 2014). In our experiments, the AsA/GSH cycle was inhibited under CO<sub>2</sub> stress, which was less pronounced under stress conditions. Moreover, in our previous study, 1% and 0.5% CO<sub>2</sub> were used to treat 2× and 4× plants, respectively, which resulted in the reduction of SOD and GR activity; however, not all antioxidant defense systems responded similarly to the elevated CO<sub>2</sub> conditions (Zinta et al., 2014). Recent reports have suggested that the inhibition of these antioxidant enzymes may be related to the enhanced oxidative damage in proteins (Aravind & Vara, 2005; Singh, Singh, Kumar, & Prasad, 2015). In conclusion, 4× and 2× plants were damaged by 0.5% CO<sub>2</sub> but the former was more resistant than the latter, which may be attributable to duplicate gene expression. Ultimately, the mechanisms underlying this difference require further investigation.

## ACKNOWLEDGMENTS

This study was supported by the Fundamental Research Funds for the Central Universities (2572016EAJ4; 2572015DA03) and the National Natural Science Foundation of China (31360073).

## CONFLICT OF INTEREST

The authors declare that they have no competing interests.

## AUTHOR CONTRIBUTIONS

MFJ and XFL conceived and designed the experiments. XFL and JMQ performed the experiments. MFJ, XFL, and JMQ analyzed the data. XFL, MFJ, and JMQ wrote the manuscript; XFL and JMQ provided editorial advice.

## REFERENCES

- Aravind, P. P., & Vara, M. N. (2005). Cadmium-zinc interactions in a hydroponic system using *Ceratophyllum demersum* L.: Adaptive ecophysiology, biochemistry and molecular toxicology. *Journal of Plant Physiology*, 17, 3–20.
- Asada, K. (1999). The water cycle in chloroplasts: Scavenging of active oxygens and dissipation of excess photons. *Annual Review of Plant Biology*, 50, 601–639.
- Bowes, G. (2003). Facing the inevitable: Plants and increasing atmospheric CO<sub>2</sub>. *Annual Review of Plant Biology*, 44, 309–332.
- Brearley, J., Venis, M. A., & Blatt, M. R. (1997). The effect of elevated CO<sub>2</sub> concentrations on K<sup>+</sup> and anion channels of *Vicia faba* L. guard cells. *Planta*, 203, 145–154.
- Comai, L. (2005). The advantages and disadvantages of being polyploid. *Nature Reviews Genetics*, 6, 836–846.
- Dalton, D. A., & Evans, H. J. (1986). Enzymatic reactions of ascorbate and glutathione that prevent peroxide damage in soybean root nodules. *Proceedings of the National Academy of Sciences of the United States of America*, 83, 3811–3815.
- Ellman, G. L. (1959). Tissue sulfhydryl groups. *Archives of Biochemistry and Biophysics*, 82, 70–77.
- Felle, H. H., & Hanstein, S. (2002). The apoplastic pH of the substomatal cavity of *Vicia faba* leaves and its regulation responding to different stress factors. *Journal of Experimental Botany*, 53, 73–82.
- Garlock, R. J., Yi, S. W., Balan, V., & Dale, B. E. (2012). AFEX pretreatment and enzymatic conversion of black locust (*Robinia pseudoacacia* L.) to soluble sugars. *BioEnergy Research*, 5, 306–318.
- Grigорова, B., Vassileva, V., Klimchuk, D., Vaseva, I., Demirevska, K., & Feller, U. (2013). Drought, high temperature, and their combination affect ultrastructure of chloroplasts and mitochondria in wheat (*Triticum aestivum* L.) leaves. *Journal of Plant Interactions*, 7, 204–213.
- Halliwell, B., & Gutteridge, J. M. C. (1981). Formation of a thiobarbituric-acid-reactive substance from deoxyribose in the presence of iron salts: The role of superoxide and hydroxyl radicals. *FEBS Letters*, 128, 347–352.
- Hasegawa, T., Sakai, H., Tokida, T., Nakamura, H., Zhu, C., Usui, Y., & Katayanagi, N. (2013). Rice cultivar responses to elevated CO<sub>2</sub> at two free-air CO<sub>2</sub> enrichment (FACE) sites in Japan. *Functional Plant Biology*, 40, 148–159.
- He, H., & He, L. (2014). Heme oxygenase 1 and abiotic stresses in plants. *Acta Physiologiae Plantarum*, 36, 581–588.
- Himmelsbach, A. (1998). Signalling of abscisic acid to regulate plant growth. *Philosophical Transactions of the Royal Society of London*, 353, 1439–1444.



- Hu, W. H., Shi, K., Song, X. S., Xia, X. J., Zhou, Y. H., & Yu, J. Q. (2006). Different effects of chilling on respiration in leaves and roots of cucumber (*Cucumis sativus*). *Plant Physiology and Biochemistry*, *44*, 837–843.
- Hubbard, K. E., Nishimura, N., Hitomi, K., Getzoff, E. D., & Schroeder, J. I. (2010). Early abscisic acid signal transduction mechanisms: Newly discovered components and newly emerging questions. *Genes and Development*, *24*, 1695–1708.
- Isely, D., & Peabody, F. J. (1985). Robinia (Leguminosae: Papilionoidea). *Castanea*, *49*, 187–202.
- Joshi, P., Bourges-Sévenier, M., Russell, K., & Mo, Z. (2012). Trends in the discovery of new marine natural products from invertebrates over the last two decades—where and what are we bioprospecting? *PLoS ONE*, *7*, e30580.
- Kong, D. J., Wang, Y., Sun, W. C., Zeng, X. C., Fang, Y., Mei-Hong, L. U., & Yang, N. N. (2014). Analysis of variation in physio-biochemical characteristics and cold resistance in winter rapeseed F<sub>2</sub> populations. *Acta Prataculturae Sinica*, *449*, 53–61.
- Kühn, K., Obata, T., Feher, K., Bock, R., Fernie, A. R., & Meyer, E. H. (2015). Complete mitochondrial complex I deficiency induces an up-regulation of respiratory fluxes that is abolished by traces of functional complex I. *Plant Physiology*, *168*, 1537–1549.
- Law, M. Y., Charles, S. A., & Halliwell, B. (1983). Glutathione and ascorbic acid in spinach (*Spinacia oleracea*) chloroplasts. The effect of hydrogen peroxide and of Paraquat. *Biochemical Journal*, *210*, 899–903.
- Leakey, A. D., Xu, F., Gillespie, K. M., Mcgrath, J. M., Ainsworth, E. A., & Ort, D. R. (2009). Genomic basis for stimulated respiration by plants growing under elevated carbon dioxide. *Proceedings of the National Academy of Sciences of the United States of America*, *106*, 3597–3602.
- Li, W. D., Biswas, D. K., Xu, H., Xu, C. Q., Wang, X. Z., Liu, J. K., & Jiang, G. M. (2009). Photosynthetic responses to chromosome doubling in relation to leaf anatomy in *Lonicera japonica* subjected to water stress. *Functional Plant Biology*, *36*, 783–792.
- Liu, H. J., Yang, L. X., Wang, Y., Huang, J., Zhu, J., Yunxia, W., ... Liu, G. (2008). Yield formation of CO<sub>2</sub>-enriched hybrid rice cultivar Shanyou 63 under fully open-air field conditions. *Field Crops Research*, *108*, 93–100.
- Madamanchi, N. R., & Alscher, R. G. (1991). Metabolic bases for differences in sensitivity of two pea cultivars to sulfur dioxide. *Plant Physiology*, *97*, 88–93.
- McNulty, A. K., & Cummins, W. R. (1987). The relationship between respiration and temperature in leaves of the arctic plant *Saxifraga cernua*. *Plant, Cell & Environment*, *10*, 319–325.
- Meng, F., Pang, H., Huang, F., Liu, L., & Wang, Y. (2012). Tetraploid black locust (*Robinia pseudoacacia* L.) increased salt tolerance by activation of the antioxidant system. *Biotechnology & Biotechnological Equipment*, *26*, 3351–3358.
- Moller, I. M. (2001). Plant mitochondria and oxidative stress: Electron transport, NADPH turnover, and metabolism of reactive oxygen species. *Annual Review of Plant Biology*, *52*, 561–591.
- Murchie, E. H., & Niyogi, K. K. (2011). Manipulation of photoprotection to improve plant photosynthesis. *Plant Physiology*, *155*, 86–92.
- Nakano, Y., & Asada, K. (1980). Hydrogen peroxide is scavenged by ascorbate-specific peroxidase in spinach chloroplasts. *Plant and Cell Physiology*, *22*, 867–880.
- NOAA-ESRL, National Oceanic and Atmospheric Administration (NOAA)-Earth System Research Laboratory (ESRL) (2014). USA. Monthly CO<sub>2</sub> concentration data set. <http://co2now.org/Current-CO2/CO2-Now/noaa-mauna-loa-co2-data.html>
- Noctor, G. (2009). Redox regulation in photosynthetic organisms: Signaling, acclimation, and practical implications. *Antioxidants Redox Signalling*, *11*, 861–905.
- Nomura, N., Honda, T., Baba, K., Naganuma, T., Tanzawa, T., Arisaka, F., & Yao, M. (2012). Archaeal ribosomal stalk protein interacts with translation factors in a nucleotide-independent manner via its conserved C terminus. *Proceedings of the National Academy of Sciences of the United States of America*, *109*, 3748–3753.
- Plaxton, W. C., & Podestá, F. E. (2006). The functional organization and control of plant respiration. *Critical Reviews in Plant Sciences*, *25*, 159–198.
- Podda, A., Checucci, G., Mouhaya, W., Centeno, D., Rofidal, V., Carratore, R. D., & Maserti, B. E. (2013). Salt-stress induced changes in the leaf proteome of diploid and tetraploid mandarins with contrasting Na<sup>+</sup> and Cl<sup>-</sup> accumulation behaviour. *Journal of Plant Physiology*, *170*, 1101–1112.
- Raschke, K., Shabahang, M., & Wolf, R. (2003). The slow and the quick anion conductance in whole guard cells: Their voltage-dependent alternation, and the modulation of their activities by abscisic acid and CO<sub>2</sub>. *Planta*, *217*, 639–650.
- Sergiev, P. V., Lavrik, I. N., Wlasoff, V. A., Dokudovskaya, S. S., Dontsova, O. A., Bogdanov, A. A., & Brimacombe, R. (1997). The path of mRNA through the bacterial ribosome: A site-directed crosslinking study using new photoreactive derivatives of guanosine and uridine. *RNA*, *3*, 464–475.
- Sharkey, T. D. (1985). Photosynthesis in intact leaves of C<sub>3</sub> plants: Physics, physiology and rate limitations. *Botanical Review*, *51*, 53–105.
- Shimono, H., Okada, M., Yamakawa, Y., Nakamura, H., Kobayashi, K., & Hasegawa, T. (2009). Genotypic variation in rice yield enhancement by elevated CO<sub>2</sub> relates to growth before heading, and not to maturity group. *Journal of Experimental Botany*, *60*, 523–532.
- Siedow, J., & Umbach, A. (1995). Plant mitochondrial electron transfer and molecular biology. *Plant Cells*, *7*, 821–831.
- Singh, V. P., Singh, S., Kumar, J., & Prasad, S. M. (2015). Investigating the roles of ascorbate-glutathione cycle and thiol metabolism in arsenate tolerance in ridged Luffa seedlings. *Protoplasma*, *252*, 1–13.
- Sridharamurthy, M., Kovach, A., Zhao, Y., Zhu, J. K., Xu, H. E., Swaminathan, K., & Melcher, K. (2014). H<sub>2</sub>O<sub>2</sub> inhibits ABA-signaling protein phosphatase HAB1. *PLoS ONE*, *9*, e113643.
- Stiling, P., Moon, D., Rossi, A., Forkner, R., Hungate, B. A., Day, F. P., & Drake, B. (2013). Direct and legacy effects of long-term elevated CO<sub>2</sub> on fine root growth and plant-insect interactions. *New Phytologist*, *200*, 788–795.
- Suzuki, N., Koussevitzky, S., Mittler, R., & Miller, G. (2011). ROS and redox signalling in the response of plants to abiotic stress. *Plant, Cell & Environment*, *35*, 259–270.
- Taiz, L., & Zeiger, E. (1991). Assimilation of mineral nutrients. *Plant Physiology*, *559*.
- Tausz-Posch, S., Borowiak, K., Dempsey, R. W., Norton, R. M., Seneweera, S., Fitzgerald, G. J., & Tausz, M. (2013). The effect of elevated CO<sub>2</sub> on photochemistry and antioxidative defence capacity in wheat depends on environmental growing conditions; A FACE study. *Environmental and Experimental Botany*, *88*, 81–92.
- Vanlerbergh, G. (2013). Alternative oxidase: A mitochondrial respiratory pathway to maintain metabolic and signaling homeostasis during abiotic and biotic stress in plants. *International Journal of Molecular Sciences*, *14*, 6805–6847.
- Woode, E., Poku, R. A., Ainooson, G. K., Boaky-Gyasi, E., Abotsi, W. K. M., Mensah, T. L., & Amoh-Barimah, A. K. (2009). An evaluation of the anti-inflammatory, antipyretic and antinociceptive effects of *Ficus exasperata* (Vahl) leaf extract. *Journal of Pharmacology and Toxicology*, *4*, 138–151.
- Wu, T. M., Lin, W. R., Kao, Y. T., Hsu, Y. T., Yeh, C. H., Hong, C. Y., & Kao, C. H. (2013). Identification and characterization of a novel chloroplast/mitochondria co-localized glutathione reductase 3 involved in salt stress response in rice. *Plant Molecular Biology*, *83*, 379–390.
- Yuan, S. X., Liu, Y. M., Fang, Z. Y., Yang, L. M., & Mu, Z. (2009). Study on the relationship between the ploidy level of microspore-derived plants and the number of chloroplast in stomatal guard cells in *Brassica oleracea*. *Agricultural Sciences in China*, *8*, 939–946.

Zinta, G., Abdelgawad, H., Domagalska, M. A., Vergauwen, L., Knapen, D., Nijs, I., & Asard, H. (2014). Physiological, biochemical, and genome-wide transcriptional analysis reveals that elevated CO<sub>2</sub> mitigates the impact of combined heat wave and drought stress in *Arabidopsis thaliana* at multiple organizational levels. *Global Change Biology*, 20, 3670–3685.

**How to cite this article:** Xu F, Jiang M, Meng F. Short-term effect of elevated CO<sub>2</sub> concentration (0.5%) on mitochondria in diploid and tetraploid black locust (*Robinia pseudoacacia* L.). *Ecol Evol*. 2017;7:4651–4660. <https://doi.org/10.1002/ece3.3046>