

Clinical Outcomes with First-line Endocrine Therapy or Chemotherapy in Postmenopausal HR+/HER2– Metastatic Breast Cancer



Yan Song¹, Yanni Hao², Alexander R. Macalalad¹, Peggy L. Lin¹, James E. Signorovitch¹ and Eric Q. Wu¹

¹Analysis Group, Inc., Boston, MA, USA. ²Novartis Pharmaceuticals Corporation, East Hanover, NJ, USA.

ABSTRACT

OBJECTIVE: To describe patient profiles and clinical outcomes associated with first-line endocrine monotherapy (ET) and chemotherapy (CT) for postmenopausal HR+/HER2– metastatic breast cancer (mBC) patients.

METHODS: This is a retrospective chart review of 139 postmenopausal HR+/HER2– mBC patients initiating first-line ET monotherapy or CT. Overall survival (OS) was described using Kaplan–Meier curves. Exploratory comparative proportional hazards regression was conducted.

RESULTS: Patients on first-line CT had significantly more frequent liver metastases than patients on first-line ET monotherapy at baseline. The median OS was 35.5 months [95% confidence interval (CI), 22.7–41.2 months] for patients on first-line ET monotherapy and 22.2 months (95% CI, 13.6–25.9 months) for those on first-line CT ($P = 0.021$). Adjusting for baseline characteristics, the OS between first-line ET monotherapy and CT was not significantly different.

CONCLUSIONS: Patients who were prescribed CT as first-line treatment had evidence of more advanced disease at baseline and shorter OS than those who received ET monotherapy as first-line treatment, suggesting a need for additional safe and effective treatment options for these patients.

KEYWORDS: breast cancer, chemotherapy, endocrine therapy, HR+/HER2– metastatic breast cancer, clinical outcomes

CITATION: Song et al. Clinical Outcomes with First-line Endocrine Therapy or Chemotherapy in Postmenopausal HR+/HER2– Metastatic Breast Cancer. *Breast Cancer: Basic and Clinical Research* 2015;9:67–72 doi:10.4137/BCBCR.S30771.

TYPE: Original Research

RECEIVED: June 17, 2015. **RESUBMITTED:** July 27, 2015. **ACCEPTED FOR PUBLICATION:** July 28, 2015.

ACADEMIC EDITOR: Goberdhan P. Dimri, Editor in Chief

PEER REVIEW: Three peer reviewers contributed to the peer review report. Reviewers' reports totaled 718 words, excluding any confidential comments to the academic editor.

FUNDING: This study was funded by Novartis Pharmaceutical Corporation. The authors confirm that the funder had no influence over the study design, content of the article, or selection of this journal.

COMPETING INTERESTS: YS, AM, PL, JS, and EW are employees of Analysis Group, Inc., which has received funding for this research from Novartis Pharmaceutical Corporation. YH is a Novartis employee and shareholder.

COPYRIGHT: © the authors, publisher and licensee Libertas Academica Limited. This is an open-access article distributed under the terms of the Creative Commons CC-BY-NC 3.0 License.

CORRESPONDENCE: yan.song@analysisgroup.com

Paper subject to independent expert blind peer review. All editorial decisions made by independent academic editor. Upon submission manuscript was subject to anti-plagiarism scanning. Prior to publication all authors have given signed confirmation of agreement to article publication and compliance with all applicable ethical and legal requirements, including the accuracy of author and contributor information, disclosure of competing interests and funding sources, compliance with ethical requirements relating to human and animal study participants, and compliance with any copyright requirements of third parties. This journal is a member of the Committee on Publication Ethics (COPE).

Published by Libertas Academica. Learn more about this journal.

Introduction

Breast cancer is the most common type of malignancy among women, with over 200,000 new breast cancer cases diagnosed in 2014 in the United States.¹ Hormone receptor positive (HR+) breast cancer, including both estrogen-receptor positive and progesterone-receptor positive cancers, accounts for 75% of all breast cancer diagnoses.² Human epidermal growth factor receptor 2 negative (HER2–) breast cancer is characterized by the normal expression of the *HER2* gene with few HER2 proteins in the tumor.³ In a recent study among breast cancer cases with known HR and HER2 status, 72.7% were found to be HR+/HER2–.⁴

HR+/HER2– metastatic breast cancer (mBC) typically receives one of two options of first-line treatment: endocrine therapy (ET) or chemotherapy (CT).⁵ The goal of these therapies is to improve quality of life and prolong survival.⁶ ET includes aromatase inhibitors (AIs), which block steps in the biosynthetic pathway of estrogen, and selective estrogen receptor modulators (SERMs), which modulate the effect of estrogen at the receptor level.^{6,7} AIs have largely replaced SERM

treatments as the preferred ET for mBC in postmenopausal women.⁸ ET is currently recommended as first-line treatment for mBC, while CT is recommended only after three sequential ET regimens, except in cases of endocrine resistance or symptomatic visceral disease (often termed visceral crisis).^{9,10}

Wilcken et al conducted a meta-analysis of randomized controlled trials comparing CT and ET in the treatment of mBC, but reported conflicting results on the comparative efficacy of the two treatment options.¹¹ Their pooled analysis of 10 previous studies found that CT was associated with a higher response rate than ET, but that the two treatment methods had similar overall survival (OS) rates. However, the studies used outdated ET and CT regimens and did not exclude cases whose HR status was negative or unknown. The comparative efficacy between contemporary ET and CT regimens is still poorly documented. Studies that assess the clinical outcomes of the two treatment options in real-world clinical practice are needed to provide further evidence on this topic. The objective of this study is to describe the clinical outcomes of ET monotherapy and CT used as first-line treatment for



postmenopausal HR+/HER2- mBC patients in real-world clinical settings.

Methods

Patients. This is a retrospective chart review study, and details of the study have been published previously.¹² Briefly, patient charts were selected from a network of 13 community-based oncology practices in the United States. Adult women with HR+/HER2- advanced breast cancer who progressed on adjuvant or first-line treatment of advanced disease at any time between January 1, 2004 and September 30, 2010 were included. Advanced breast cancer was defined as breast cancer (new diagnosis or local, regional, or distant recurrence) not amenable to surgery or radiotherapy, including Stage IIIA (except for T3N1M0 disease), Stage IIIB, Stage IIIC, and Stage IV. From this larger cohort, patients were selected for inclusion in this study if they were postmenopausal with a confirmed diagnosis of Stage IV (metastatic) HR+/HER2- breast cancer and had started either ET monotherapy or CT as their first-line treatment for mBC (Fig. 1). The study was approved by the jurisdictional IntegReview Institutional Review Board (IRB).

Collection of patient data. A standardized chart abstraction form was developed by the study investigators to collect patient information, including demographics, insurance plan type, menopausal status, comorbidities, sites of metastasis, treatment history, and outcomes information. Experienced clinical research nurses verified the inclusion criteria, abstracted data from the electronic medical records for each patient, and entered the information into the online chart abstraction form. Abstracted patient data were anonymous and nonidentifiable.

Outcome measures. OS was defined as the time from the initiation of first-line therapy for mBC to death. Time on

treatment was defined as the time from the initiation of first-line therapy to the discontinuation of the last observed line of therapy for mBC. Patients without death or discontinuation dates were censored at their last available visit date or at the end of the study period (September 30, 2012), whichever came first.

Statistical analysis. The overall sample was classified by first-line treatment of mBC into ET monotherapy and CT groups. A modified Charlson Comorbidity Index (CCI) was calculated, which excluded breast cancer from the index. Baseline characteristics were compared among three subgroups: first-line CT, first-line ET monotherapy with CT at later lines, and first-line ET without CT at later lines, using Wilcoxon rank-sum tests for continuous variables and Fisher's exact tests for categorical variables.

The OS of patients on first-line ET monotherapy and CT was estimated using Kaplan-Meier curves and compared using log-rank tests. OS was further stratified by baseline metastatic sites. Time on treatment was described and compared between patients on first-line ET monotherapy and CT. In an exploratory analysis, multivariable Cox proportional hazards regression models were used to examine the association of first-line treatment with OS while adjusting for potential confounding due to available baseline characteristics. The baseline characteristics included age, commercial insurance, modified CCI, baseline metastasis (visceral, bone, other), history of adjuvant treatment, and time to recurrence (for recurrent tumors, this was the time from the initial diagnosis of breast cancer to recurrence, and the time was standardized before entering the model; for other cases, it was defined as zero).

Results

A total of 139 patients were included in the study with a median follow-up time of 26 months, among whom 34 received CT and 105 received ET monotherapy as their first-line treatment. Among patients receiving first-line ET monotherapy, 66 patients received CT at later lines (Table 1). A majority of patients had commercial or private insurance, though patients who received CT tended to be more likely to have commercial insurance. Patients who received first-line ET monotherapy and no later CT tended to be older than those who received CT for first-line or later line treatment ($P < 0.001$).

The median modified CCI (excluding breast cancer) was 0.0 for patients in all three subgroups, which suggests similar baseline comorbidity levels among these groups. However, patients who received first-line ET monotherapy and no later CT had higher CCI levels (levels 3 and 4) compared with patients who had ever received CT. The most frequent metastatic site at the initiation of first-line therapy was bone, followed by liver and lung. Patients on first-line CT had more frequent liver or lung metastases than patients on first-line ET monotherapy, although the difference of lung metastases was not statistically significant ($P = 0.087$). The frequency of

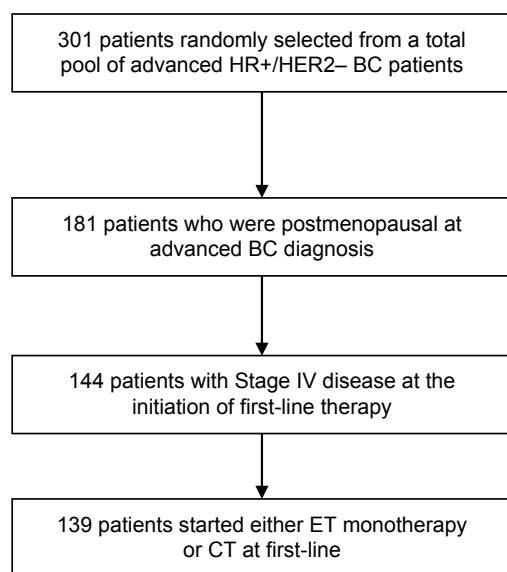


Figure 1. Sample selection for postmenopausal HR+/HER2- mBC patients.

**Table 1.** Baseline characteristics of Stage IV postmenopausal patients who received first-line chemotherapy (CT) or endocrine monotherapy (ET).

BASELINE CHARACTERISTICS	MEDIAN (RANGE) OR N (%)			<i>P</i> ^b	
	FIRST-LINE CT ^a [A]	FIRST-LINE ET AND LATER CT [B]	FIRST-LINE ET AND NO LATER CT [C]	[A] VS [B] AND [C]	[A] AND [B] VS [C]
	N = 34	N = 61	N = 44		
Age, median (range)	63.1 (49.3, 87.9)	63.0 (45.2, 82.3)	69.5 (44.9, 88.6)	0.346	<0.001**
Insurance plan type, n (%)					
Commercial/private insurance	26 (76.5)	41 (67.2)	23 (52.3)	0.148	0.056
Medicare	14 (41.2)	30 (49.2)	30 (68.2)	0.117	0.018*
Medicaid	2 (5.9)	7 (11.5)	7 (15.9)	0.357	0.269
Other ^c	0 (0.0)	1 (1.6)	1 (2.3)	>0.999	0.535
Unknown	1 (2.9)	2 (3.3)	2 (4.5)	>0.999	0.652
Modified Charlson Comorbidity Index (CCI)					
Median (range)	0.0 (0.0, 2.0)	0.0 (0.0, 2.0)	0.0 (0.0, 4.0)	0.174	0.054
Level 0, n (%)	25 (73.5)	41 (67.2)	24 (54.5)	0.302	0.126
Level 1, n (%)	8 (23.5)	16 (26.2)	14 (31.8)	0.661	0.422
Level 2, n (%)	1 (2.9)	4 (6.6)	1 (2.3)	>0.999	0.665
Level 3, n (%)	0 (0.0)	0 (0.0)	3 (6.8)	>0.999	0.030*
Level 4, n (%)	0 (0.0)	0 (0.0)	2 (4.5)	>0.999	0.099
Sites of metastasis at the time of mBC diagnosis, n (%)					
Bone	24 (70.6)	51 (83.6)	29 (65.9)	0.504	0.141
Liver	19 (55.9)	9 (14.8)	4 (9.1)	<0.001**	0.009*
Lung	11 (32.4)	9 (14.8)	9 (20.5)	0.087	>0.999
Other visceral disease	1 (2.9)	2 (3.3)	2 (4.5)	>0.999	0.652
Brain	0 (0.0)	1 (1.6)	1 (2.3)	>0.999	0.535
Other ^d	7 (20.6)	10 (16.4)	13 (29.5)	>0.999	0.128

Notes: ^aRefers to patients who received chemotherapy either as monotherapy or in combination with other therapies as first-line treatment. ^bContinuous variables were compared between groups using Wilcoxon rank-sum tests, while categorical variables were compared using Fisher's exact tests. ^cOther insurance plan types include AARP and Medicare supplement. ^dOther sites of metastatic disease include the bone marrow, peritoneum, chest wall, colon, stomach, omentum, bladder, and skin. One physician reported the disease as "widely metastatic". Pleural effusion and subcutaneous masses on back and skin were also noted. **P* < 0.05; ***P* < 0.001.

metastasis of other sites did not differ significantly among the three groups. The most frequently used first-line ET agents were letrozole (35.2%), followed by anastrozole (28.6%) and fulvestrant (21.9%). The most frequently used first-line CT agents were capecitabine (35.3%), followed by paclitaxel (29.4%), docetaxel (29.4%), gemcitabine (14.7%), and cyclophosphamide (11.8%). No patient received any HER2-targeted therapy.

The median survival time was 35.5 months [95% confidence interval (CI), 22.7–41.2 months] for patients on first-line ET monotherapy and 22.2 months (95% CI, 13.6–25.9 months) for those on first-line CT, and the difference was statistically significant (*P* = 0.021, Fig. 2). When patients on first-line ET monotherapy were further stratified, those who received CT at later lines appeared to have a shorter median survival (34.1 months; 95% CI, 22.5–41.0 months) compared with those who never received CT (39.5 months; 95% CI, 19.2–59.7 months). The median time on treatment was 33.4 months (95% CI, 22.3–39.3 months) for patients on first-line ET monotherapy and 19.6 months (95% CI, 10.5–24.4 months) for those on first-line

CT, and the difference was also statistically significant (*P* = 0.027, Fig. 3).

When stratified by baseline metastatic status (Table 2), patients who had visceral metastasis and received first-line ET monotherapy had significantly longer survival, compared with those who received first-line CT (*P* = 0.037). However, among patients with only bone metastasis, there was no significant difference in OS between the two treatment groups (*P* = 0.721). In the exploratory Cox regression analyses (Table 3), the unadjusted hazard ratio (HR) for the risk of death for patients on first-line ET monotherapy versus CT was 0.60 (95% CI, 0.39–0.93; *P* = 0.023), suggesting that patients in the ET group had longer OS. After adjusting for baseline characteristics, the HR was no longer statistically different from equivalence (HR = 0.64; 95% CI, 0.39–1.06; *P* = 0.084).

Discussion

In this study, we investigated the clinical outcomes of ET monotherapy and CT when used as first-line treatment for postmenopausal HR+/HER2- mBC patients. The presence

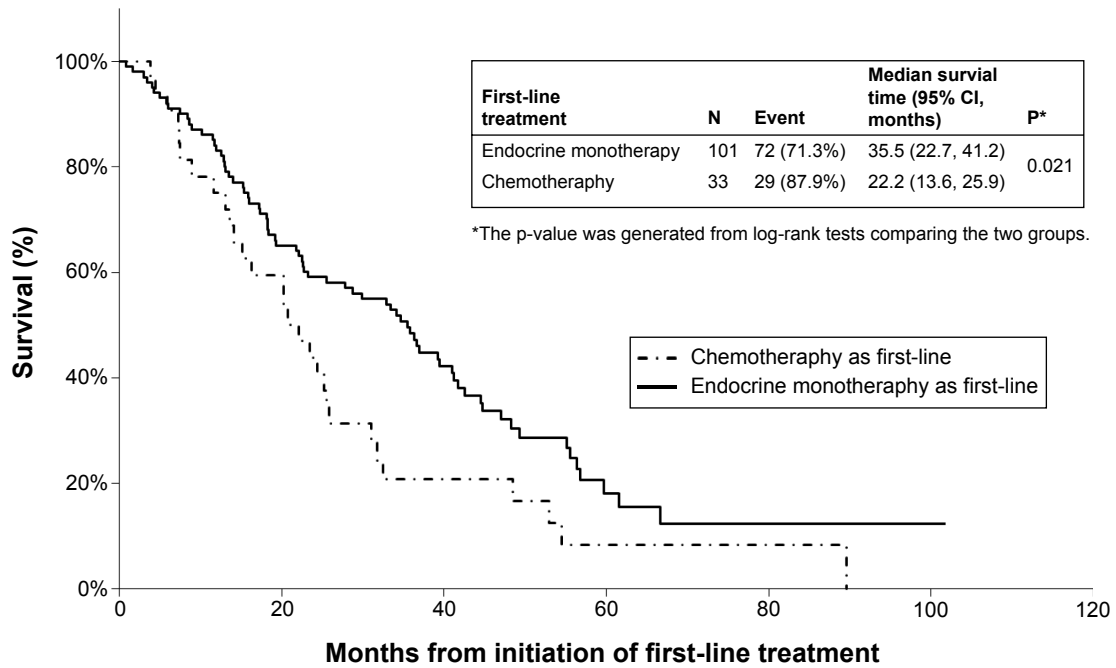


Figure 2. Comparison of overall survival between postmenopausal BC patients receiving endocrine monotherapy versus chemotherapy as first-line treatment for stage IV BC.

of liver metastases at the initiation of treatment was associated with an increased use of CT as first-line therapy, whereas the presence of bone metastasis seemed uncorrelated with CT use. This is consistent with current recommendations that CT be used for the treatment of symptomatic visceral disease.⁵ Patients on first-line CT did not differ significantly from those on first-line ET monotherapy on other baseline

characteristics, including CCI and the presence of other metastatic sites. About 42% of the patients who received first-line ET never received CT in later lines (throughout the treatment history during the study period). Compared with patients who received CT for first- or later line treatment, patients who were treated with ET only were significantly older in age, had more comorbid conditions, and were less likely to have liver

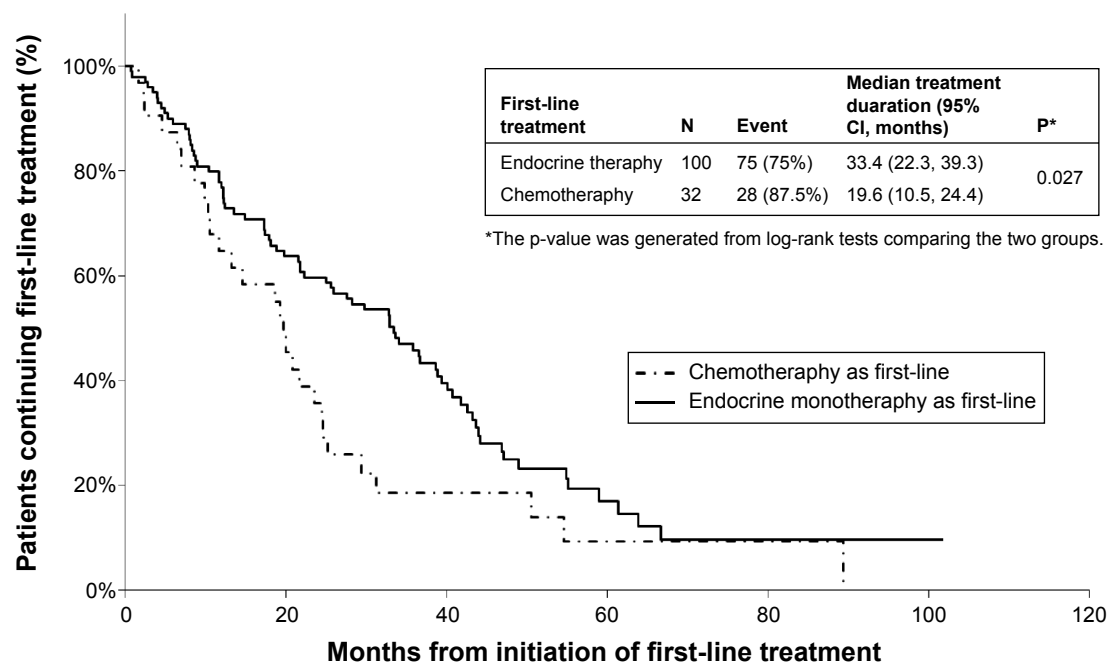


Figure 3. Comparison of time to treatment discontinuation between postmenopausal BC patients receiving endocrine monotherapy versus chemotherapy as first-line treatment for stage IV BC.

**Table 2.** Overall survival of postmenopausal women receiving endocrine therapy versus chemotherapy as first-line treatment for stage IV BC stratified baseline metastatic status.

BASILINE METASTATIC STATUS	FIRST-LINE TREATMENT	N	EVENT	MEDIAN SURVIVAL TIME (95% CI, MONTHS)	P ^a
Bone metastasis only	Endocrine therapy	60	43	34.7 (22.5–44.8)	0.721
	Chemotherapy	10	7	31.8 (13.6–54.5)	
Visceral metastasis	Endocrine therapy	28	20	33.4 (13.5–39.3)	0.037
	Chemotherapy	23	22	16.3 (7.5–22.2)	

Note: ^aP-values were generated from log-rank tests.

metastasis (suggesting less aggressive disease). This suggested that in the clinical practice setting, physicians' key considerations for choosing ET (over CT) might be older age, more comorbidities, and less aggressive disease.

Overall, there were indications that patients receiving first-line CT might have had more advanced or aggressive disease than those receiving first-line ET monotherapy. In univariate analysis, the ET monotherapy group had a longer median OS; however, after adjusting for baseline covariates, the difference between the first-line ET monotherapy and CT groups became nonsignificant. This result suggests that the observed difference of survival times between patients on first-line ET and those on first-line CT might be due to differential patient characteristics at baseline. Results of the analyses stratified by baseline metastatic sites support this hypothesis, since the survival benefit of first-line ET was

observed only among patients with visceral metastasis but not with only bone metastasis.

Furthermore, one recent cross-sectional survey indicated that patients with HR+/HER2- mBC receiving ET reported greater health-related quality of life, satisfaction with treatment, and better feeling about side effects compared with those receiving CT.¹² In addition, previous studies found that costs related to CT adverse events were significantly higher compared with those of the ET-based regimens in the treatment of advanced breast cancer.¹³ The goal of the systemic treatment of mBC is to prolong survival and to enhance quality of life; thus, the guidelines usually prefer ET, which can be effective with less toxicity than CT.⁵ Even though CT is recommended when there is endocrine refractory disease or symptomatic visceral disease, the guidelines still recommend ET for asymptomatic visceral involvement in the absence of endocrine refractory disease.^{5,14}

The primary objective of this study was to describe the clinical outcomes of different first-line treatments, and the comparative analyses were exploratory. This study is subject to several important limitations. First, the statistical power may be limited by small sample size. Future studies with a larger sample size of mBC patients are warranted to confirm these results. Second, the difference of OS between patients on first-line ET monotherapy and CT is subject to confounding by indication, because more severe cases with worse prognosis are often treated with CT. We have adjusted several surrogate factors at baseline to control for this confounding, but these variables may not be sufficient to fully capture the baseline differences between patients who started with ET monotherapy and those who started with CT. Thus, the possibility of residual confounding cannot be excluded. Third, the quality of life at the treatment initiation could be an important confounder, and relevant inputs from physicians or patients would be conducive to confounding control. However, such data were not captured in the medical charts. Although baseline measures of performance status, including the Karnofsky Performance Status (KPS) and the Eastern Cooperative Oncology Group (ECOG) Score were collected in the current study, the data retrieved were sparse and insufficient to adjust in the multivariate models. Moreover, information on the rationale or factors of consideration for physicians' decision making on the

Table 3. Cox proportional hazards model for survival time in Stage IV postmenopausal patient receiving first-line chemotherapy or endocrine monotherapy.

MODEL	HR (95% CI) ^a	P
Unadjusted		
Endocrine therapy	0.60 (0.39–0.93)	0.023*
Multivariable-adjusted		
Endocrine therapy	0.64 (0.39–1.06)	0.084
Age	1.00 (0.97–1.02)	0.945
Commercial insurance	0.84 (0.53–1.33)	0.460
Charlson Comorbidity Index	0.99 (0.68–1.45)	0.951
Diabetes	0.99 (0.50–1.99)	0.987
Cardiovascular disease	1.70 (1.07–2.70)	0.024*
Visceral metastasis ^b	1.78 (1.10–2.87)	0.018*
Bone metastasis	0.96 (0.55–1.68)	0.896
Other metastasis	0.91 (0.53–1.57)	0.739
Recurrent	1.40 (0.77–2.55)	0.273
Recurrent time (standardized) ^c	1.00 (0.99–1.00)	0.323

Notes: ^aA hazard ratio <1 indicates that patients on endocrine monotherapy had a lower instantaneous risk of death than patients on chemotherapy.

^bVisceral metastasis includes liver, lung, and other visceral metastases.

^cFor recurrent tumors, recurrent time was the time from the initial diagnosis of breast cancer to recurrence, and it was standardized before entering the model; for other cases, it was defined as zero. *P < 0.05.



treatment choice was not available. Unmeasured or sparsely measured confounders such as these are a limitation of real-world retrospective data collection.

Conclusion

Patients who were prescribed CT as first-line treatment for postmenopausal HR+/HER2- mBC appeared to have more advanced disease at baseline and shorter OS than those who received ET monotherapy as first-line treatment. This suggests that ET might be a safe and effective treatment option for patients who, in real-world practice, receive first-line ET. However, safer and more effective treatments are needed for patients who receive first-line CT. Future studies with larger sample sizes and systematic documentation of patient severity are warranted to further explore associations between first-line treatments and outcomes in mBC.

Acknowledgment

The authors thank Emily Meade, an employee of the Analysis Group, Inc., who contributed to the preparation and editing of the manuscript.

Author Contributions

Conceived and designed the study: YH, AM, PL, JS, EW. Analyzed the data: YS, AM, PL. Wrote the first draft of the manuscript: YS. Contributed to the writing of the manuscript: YH, AM, PL, JS, EW. Agree with manuscript results and conclusions: YS, YH, AM, PL, JS, EW. Jointly developed the structure and arguments for the paper: YS, YH, AM, PL, JS, EW. Made critical revisions and approved final version: YS, YH, AM, PL, JS, EW. All authors reviewed and approved of the final manuscript.

REFERENCES

1. National Cancer Institute. SEER Stat Fact Sheets: Breast Cancer 2014. 2014. Available at: <http://seer.cancer.gov/statfacts/html/breast.html>. Accessed September 15, 2014.
2. Kennecke H, Yerushalmi R, Woods R, et al. Metastatic behavior of breast cancer subtypes. *J Clin Oncol*. 2010;28(20):3271–3277.
3. Slamon DJ, Leyland-Jones B, Shak S, et al. Use of chemotherapy plus a monoclonal antibody against HER2 for metastatic breast cancer that overexpresses HER2. *N Engl J Med*. 2001;344(11):783–792.
4. Howlander N, Altekruse SF, Li CI, et al. US incidence of breast cancer subtypes defined by joint hormone receptor and HER2 status. *J Natl Cancer Inst*. 2014;106(5). doi:10.1093/jnci/dju055.
5. National Comprehensive Cancer Network. *NCCN clinical practice guidelines in oncology: breast cancer*. Version 3. Available at: <http://www.nccn.com>. Published 2014. Accessed September 15, 2014.
6. Chung CT, Carlson RW. Goals and objectives in the management of metastatic breast cancer. *Oncologist*. 2003;8(6):514–520.
7. Miller WR. Aromatase inhibitors: mechanism of action and role in the treatment of breast cancer. *Semin Oncol*. 2003;30(4 suppl 14):3–11.
8. Geisler J. Differences between the non-steroidal aromatase inhibitors anastrozole and letrozole—of clinical importance? *Br J Cancer*. 2011;104(7):1059–1066.
9. Parnes HL, Cirrincione C, Aisner J, et al; Cancer and Leukemia Group B. Phase III study of cyclophosphamide, doxorubicin, and fluorouracil (CAF) plus leucovorin versus CAF for metastatic breast cancer: Cancer and Leukemia Group B 9140. *J Clin Oncol*. 2003;21(9):1819–1824.
10. Malhotra V, Perry MC. Classical chemotherapy: mechanisms, toxicities and the therapeutic window. *Cancer Biol Ther*. 2003;2(4 suppl 1):S2–S4.
11. Wilcken N, Hornbuckle J, Ghersi D. Chemotherapy alone versus endocrine therapy alone for metastatic breast cancer. *Cochrane Database Syst Rev*. 2003;(2):CD002747.
12. Gupta S, Zhang J, Jerusalem G. The association of chemotherapy versus hormonal therapy and health outcomes among patients with hormone receptor-positive, HER2-negative metastatic breast cancer: experience from the patient perspective. *Expert Rev Pharmacoecon Outcomes Res*. 2014;14(6):929–940.
13. Campone M, Yang H, Faust E, et al. Cost of adverse events during treatment with everolimus plus exemestane or single-agent chemotherapy in patients with advanced breast cancer in Western Europe. *J Med Econ*. 2014;17(12):837–845.
14. Barrios CH, Sampaio C, Vinholes J, Caponero R. What is the role of chemotherapy in estrogen receptor-positive, advanced breast cancer? *Ann Oncol*. 2009;20(7):1157–1162.