



## ORIGINAL REPORT

# Blood eosinophilia, use of inhaled corticosteroids, and risk of COPD exacerbations and mortality

Olorunfemi A. Oshagbemi<sup>1,2,3,4</sup>  | Frits M.E. Franssen<sup>4,6</sup> | Dionne C.W. Braeken<sup>3,4,6</sup> | Yvonne Henskens<sup>7</sup> | Emiel F.M. Wouters<sup>4,6</sup> | Anke-Hilse Maitland-van der Zee<sup>3,8</sup>  | Andrea M. Burden<sup>1,2,3</sup> | Frank de Vries<sup>1,2,5</sup>

<sup>1</sup>Department of Clinical Pharmacy and Toxicology, Maastricht University Medical Centre, Maastricht, the Netherlands

<sup>2</sup>Department of Epidemiology, Care and Public Health Research Institute (CAPHRI), Maastricht University, Maastricht, the Netherlands

<sup>3</sup>Division of Pharmacoepidemiology and Clinical Pharmacology, Utrecht Institute of Pharmaceutical Sciences, Utrecht, the Netherlands

<sup>4</sup>CIRO, Horn, the Netherlands

<sup>5</sup>MRC Lifecourse Epidemiology Unit, Southampton General Hospital, Southampton, UK

<sup>6</sup>Department of Respiratory Medicine, Maastricht University Medical Centre (MUMC+), Maastricht, the Netherlands

<sup>7</sup>Department of Clinical Chemistry, Maastricht University Medical Centre, Maastricht, the Netherlands

<sup>8</sup>Department of Respiratory Medicine, Academic Medical Center (AMC), University of Amsterdam (UvA), Amsterdam, the Netherlands

## Correspondence

F. de Vries, Division of Pharmacoepidemiology and Clinical Pharmacology, Utrecht Institute for Pharmaceutical Sciences, Utrecht University, Utrecht, The Netherlands.  
Email: f.devries@uu.nl

## Abstract

**Purpose:** It remains unclear whether eosinophilia is useful for in guiding inhaled corticosteroid (ICS) therapy in chronic obstructive pulmonary disease (COPD) patients. The goal of this study is to evaluate the risk of acute exacerbations, COPD-related hospitalisations/accident and emergency visits, and all-cause mortality with various levels of eosinophil counts among COPD patients using ICS.

**Methods:** A cohort study was conducted using the UK Clinical Practice Research Datalink. Patients were aged 40+ and had COPD (n = 32 693). Current users of ICS were stratified by relative and absolute eosinophil counts to determine the risk of outcomes with blood eosinophilia using Cox regression analysis.

**Results:** Among COPD patients, current use of ICS was not associated with a reduced risk of acute COPD exacerbations, COPD-related hospitalisations/accident and emergency visits, and all-cause mortality. Stratification of ICS use by absolute or relative eosinophil counts did not result in significant differences in risk of COPD exacerbations or hospitalisations/accident and emergency visits. However, all-cause mortality was reduced by 12% to 24% among patients with eosinophilia.

**Conclusions:** COPD-related acute exacerbations or hospitalisations/accident and emergency visits were not reduced with eosinophilia among users of ICS with COPD. However, all-cause mortality was reduced by 12% to 24%. These findings are potentially important and require further evaluation in prospective studies.

## KEYWORDS

chronic obstructive pulmonary disease, eosinophils, exacerbations, inhaled corticosteroids, pharmacoepidemiology

## 1 | INTRODUCTION

Chronic obstructive pulmonary disease (COPD) is a major cause of morbidity and mortality worldwide and is defined by the presence of

chronic respiratory symptoms and persistent airflow limitation.<sup>1</sup> While bronchodilators are the cornerstone of pharmacological management of COPD, patients with frequent exacerbations are often additionally treated with inhaled corticosteroids (ICS).<sup>2</sup> Exacerbations play a

This is an open access article under the terms of the Creative Commons Attribution-NonCommercial License, which permits use, distribution and reproduction in any medium, provided the original work is properly cited and is not used for commercial purposes.

© 2018 The Authors. Pharmacoepidemiology & Drug Safety Published by John Wiley & Sons Ltd.

central role in the pathophysiology of COPD as they are related to lung function decline, poor health status, and increased mortality.<sup>3</sup> While nonresponse to ICS therapy is common,<sup>4</sup> potential side effects of ICS include fractures and pneumonia.

Clinical data have suggested that blood eosinophil count, which is present in up to 40% of COPD patients,<sup>5</sup> is a promising biomarker of response to ICS in patients with COPD.<sup>6-9</sup> Eosinophilic airway inflammation has been associated with an increased risk of exacerbations, and patients with eosinophilic inflammation responded better to ICS therapy than noneosinophilic patients.<sup>6,10</sup> Pascoe and colleagues<sup>6</sup> performed a post hoc analysis of data from 2 replicate, randomised, double-blind trials with duration of 12 months. In the analysis, vilanterol 25 µg was compared with 25 µg vilanterol plus 50, 100, or 200 µg fluticasone furoate in patients with moderate-to-severe COPD. They observed that 68% of COPD patients had peripheral blood eosinophilia. Importantly, across all doses of ICS, fluticasone furoate and vilanterol reduced exacerbations by 29% compared with vilanterol alone in patients with eosinophil counts  $\geq 2\%$ , and by 10% in patients with eosinophil counts  $< 2\%$ . Analysis of data from the FLAME trial showed no significant reduction in exacerbation in indacaterol/glycopyrronium compared to salmeterol/fluticasone among patients with blood eosinophil levels of 150 to 300 cells/ $\mu\text{L}$  versus 300 cells/ $\mu\text{L}$ .<sup>8</sup> In this study, we use the word “eosinophilia” to mean an elevated blood eosinophil count based on our defined cutoffs.

However, studies with real-world evidence are currently limited and are needed to identify patients who will benefit from ICS use. Therefore, the aim of this study was to evaluate the risk of acute exacerbations, COPD-related hospitalisations/accident and emergency visits, and all-cause mortality, with various levels of eosinophil counts among COPD patients using ICS.

## 2 | METHODS

### 2.1 | Data source

This study was conducted with data obtained from the Clinical Practice Research Datalink (CPRD). It provides detailed information on drug prescriptions, clinical events, demographics, specialist referrals, hospital admissions, and electronic lab linked data of patients from 674 general practices, who are representative for 7% of the total British population.<sup>11,12</sup> Data collection started on January 1, 2005, corresponding to the introduction of the Quality and Outcomes Framework in April 2004, which improved routine recording of various diseases, including COPD.<sup>13</sup> Routinely collected historical data were available, dating back to 1987. Previous studies with the CPRD have shown a high level of validity of recording of COPD<sup>11</sup> and COPD exacerbations.<sup>14</sup> Clinical Practice Research Datalink has previously been used to study COPD.<sup>15-17</sup> The independent scientific advisory committee of MHRA database research approved the study protocol (17\_065R).

### 2.2 | Study population

We selected all patients aged  $\geq 40$  years with a diagnosis of COPD, as recorded by a first read code during valid data collection from January 1, 2005 through January 31, 2014. We excluded all patients with a

### KEY POINTS

- We found no reduced risk of COPD-related acute exacerbations or hospitalizations/A&E visits among patients with blood eosinophilia using ICS.
- However, all-cause mortality was reduced among current ICS users with blood eosinophilia compared to current ICS users with low relative blood eosinophil count.
- The findings have important implications on targeted prescribing of Inhaled corticosteroids among COPD patients based on blood eosinophil counts in general practice.

diagnosis of COPD as recorded by validated read codes before January 1, 2005. Patients were followed from the date of their COPD diagnosis (index date) until the end of data collection, date of death, end of study (January 31, 2014) or when the outcome of interest occurred, whichever came first. The primary outcome of interest was an acute exacerbation of COPD, using validated read codes for acute exacerbation of COPD with 96% positive predictive value (PPV) in identifying acute exacerbation in the CPRD.<sup>18</sup> Secondary outcomes were hospitalisation or accident and emergency (AE) visit for COPD and all-cause mortality. Only patients with blood eosinophil counts measured during study period were included. Blood eosinophil count closest to index date (ie, start of follow-up) was used in our analyses. Relatively stable blood eosinophil counts have been reported among COPD patients over time within the UK population, irrespective of exposure to systemic glucocorticoids or other factors.<sup>19,20</sup> We excluded patients with a history of asthma, those with COPD exacerbations, those with oral glucocorticoid in the past month, or those with ICS use in the past year.

### 2.3 | Exposure

Exposure to ICS was determined time-dependently during follow-up. Each patient's follow-up time was divided into fixed periods of 90 days, starting at index date. Prior to the start of each interval, ICS exposure was determined based on the date of the prescription, and classified as current, recent, past, or never use (patient without ICS exposure). Current users had received their most recent ICS prescription within the 30 days prior to the start of an interval, recent users were those with their most recent ICS prescription between 31 and 60 days prior, and past users were issued their most recent ICS prescription more than 60 days ago. Never users were those with no prior or current exposure to ICS at the start of an interval. At index date all patients were classified as never or current users, and could then move between exposure groups over time—meaning that, eg, past and recent users could become current users again when a new ICS prescription was issued. Current ICS users were stratified by serum count of eosinophils at baseline and classified as low ( $< 2.0\%$ ), moderate ( $\geq 2.0$  to  $3.9\%$ ), high ( $4.0\%$  to  $5.9\%$ ), or very high ( $\geq 6.0\%$ ). We also stratified by absolute blood eosinophil count ( $< 0.34 \times 10^9$  cells/L versus  $\geq 0.34 \times 10^9$  cells/L). We chose

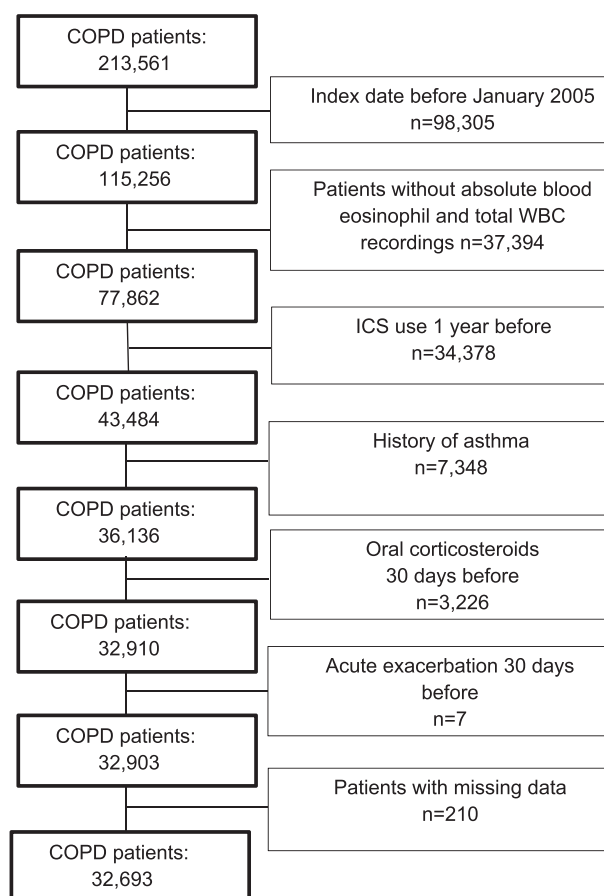
this analysis approach because of its reliability in adequately assess exposure status and covariates essential to the validity of our results.<sup>21</sup>

## 2.4 | Covariates

Potential confounders were assessed time-dependently; with the exception of gender, smoking status, alcohol use, and body mass index, which were determined at baseline. The following confounders were considered as potential confounders, and identified at the start of each 90-day interval: a history of congestive heart failure, anaemia, chronic liver disease, allergic rhinitis, all malignancies except nonmelanoma skin cancer, ischaemic heart disease, stroke, rheumatoid arthritis, diabetes mellitus, hypertension, pulmonary fibrosis, osteoporosis, and anxiety. Additionally, the use of antihistamines, oxygen, proton-pump inhibitors, antipsychotics, antidepressants, or statins was identified in the past 6 months.<sup>22-26</sup> We adjusted for proxy indicators of the severity of obstructive airway disease, as previously defined as dispensed prescriptions of short and long-acting beta-agonists, short and long acting muscarinic antagonists, xanthine derivatives, and oral corticosteroids.<sup>27,28</sup>

## 2.5 | Statistical analysis

We evaluated the risk of study outcomes stratified by ICS use, gender, and age using Cox regression analysis (SAS 9.4 PHREG procedure). Current ICS use was further stratified by blood eosinophil counts. The difference between each eosinophil count strata was tested using Wald's



**FIGURE 1** Flow chart showing the selection of eligible patients

**TABLE 1** Baseline characteristics

	COPD Patients (n = 32 693)	
	n	(%)
Females	14 551	44.5
Mean age (years, SD)	68.4	10.8
Mean follow-up time (years, SD)	3.1	2.2
Age category (years)		
40-59	6902	21.1
60-79	20 350	62.3
80+	5441	16.76
BMI (kg/m <sup>2</sup> )* in the past 6 months		
Underweight (BMI < 18.5 kg/m <sup>2</sup> )	1704	5.2
Normal weight (BMI 18.5-24.9 kg/m <sup>2</sup> )	11 286	34.5
Overweight (BMI 25.0-29.9 kg/m <sup>2</sup> )	10 412	31.9
Obese (BMI ≥ 30.0 kg/m <sup>2</sup> )	8437	25.8
Missing	854	2.6
Mean relative eosinophil count (%), (SD)	3.1	2.7
Relative blood eosinophil count		
Low (<2.0%)	11 756	36.0
Moderate (≥2.0%-3.9%)	13 059	39.9
High (4.0%-5.9%)	5110	15.6
Very high (≥6.0%)	2768	8.5
Absolute blood eosinophil count		
<0.34 × 10 <sup>9</sup> cells/L	26 828	82.1
≥0.34 × 10 <sup>9</sup> cells/L	5865	17.9
Smoking status at index date		
Never	3285	10.1
Current	14 522	44.4
Former	14 849	45.4
Missing	37	0.1
Drug use (in the past 6 months)		
SABAs	15 307	46.8
LABAs	2724	8.3
SAMAs	2451	7.5
LAMAs	4432	13.6
Xanthine derivatives	97	0.3
Antipsychotics	352	1.1
History of comorbidities		
Diabetes mellitus	4027	12.3
Anxiety	4865	14.8
Osteoporosis	1872	5.7
Malignancies excluding nonmelanoma skin cancer	4867	14.9
Chronic liver disease	110	0.3
Ischaemic heart disease	5027	15.4

Abbreviations: SD, standard deviation; COPD, chronic obstructive pulmonary disease; BMI, body mass index; SABAs, short-acting beta-2 agonists; LABAs, long-acting beta-2 agonists; SAMAs, short-acting muscarinic antagonists; LAMAs, long-acting muscarinic antagonists; ICS, inhaled corticosteroids.

test for relative and absolute blood eosinophil counts. To avoid immortal time bias, all patients were classified as never users until the first ICS prescription after the index date, and all exposure categories of ICS use were incorporated into the statistical model time-dependently. We ran

separate models for age, gender, and absolute and relative counts avoiding collinearity between absolute and relative eosinophil counts. Potential confounders were included in the final models if they independently changed the  $\beta$ -coefficient for current ICS exposure by at least 5%, or when consensus existed within the team of researchers.

### 3 | RESULTS

We identified 213 561 patients with COPD, of whom 32 693 met the inclusion criteria (Figure 1). Table 1 shows the baseline characteristics of COPD patients, which were predominantly elderly males. At baseline, the mean blood eosinophil count was 3.1% ( $\pm 2.7\%$ ), and 64.1% had a relative blood eosinophil count  $\geq 2.0\%$ . More than half of all patients were either overweight (31.9%) or obese (25.8%), and a considerable proportion of COPD patients suffered from ischemic heart disease (15.4%).

#### 3.1 | Acute COPD exacerbations

Current use of ICS was not associated with a significant reduction in risk of acute exacerbations (adjusted hazard ratio [adj.HR] 1.15; 95%

confidence interval [CI] 1.09-1.21) (Table 2). The risk of acute COPD exacerbations was not significantly lower among current ICS users with relative eosinophil counts  $\geq 2\%$ , as compared to current users with relative counts  $< 2\%$ . This was similar when comparing absolute blood eosinophil counts  $\geq 0.34 \times 10^9$  cells/L with counts  $< 0.34 \times 10^9$  cells/L. There was no difference in risk of acute exacerbation between all relative and absolute eosinophil categories. Figure 2A shows life table analysis. When stratified by age and gender, no significant association with the risk of acute exacerbations was observed, using males or those aged 40 to 59 as the reference (Table 2).

#### 3.2 | COPD-related hospitalisations/accident and emergency visits

Current use of ICS was associated with a 1.2-fold increased risk of COPD-related hospitalisations/AE visits (adj.HR 1.17; 95% CI: 1.04-1.32). Similar to acute COPD exacerbations, stratification by absolute or relative eosinophil count did not result in a significant difference in risk of COPD-related hospitalisations/AE visits). We also found no difference in risk when we tested the difference in risk between absolute and relative blood eosinophil counts. Figure 2B shows the KM life table analysis curve. We did not identify an increased risk of hospitalisations

**TABLE 2** Risk of acute COPD exacerbations with current use of ICS, stratified by eosinophil counts, gender, and age

	Exacerbations (n = 14 523) <sup>d</sup>	IR (/1000 PY)	Age and Gender-Adjusted HR (95% CI)	Adjusted HR (95% CI) <sup>a</sup>
ICS use				
Never	8744	128.8	Reference	Reference
Past	2538	137.7	0.99 (0.99-1.04)	0.94 (0.90-0.99)
Recent	882	188.7	1.38 (1.28-1.47)	1.11 (1.03-1.19)
Current	2359	208.6	1.49 (1.41-1.55)	1.15 (1.09-1.21)
By relative blood eosinophil count				
Low (<2.0%)	838	207.5	Reference	Reference
Moderate ( $\geq 2.0\%$ -3.9%)	943	211.4	1.01 (0.92-1.11)	1.03 (0.93-1.13)
High (4.0%-5.9%)	373	214.6	1.03 (0.91-1.16)	1.04 (0.92-1.17)
Very high ( $\geq 6.0\%$ )	205	191.4	0.93 (0.79-1.08)	0.95 (0.81-1.11)
By absolute blood eosinophil count				
$< 0.34 \times 10^9$ cells/L	1907	208.5	Reference	Reference
$\geq 0.34 \times 10^9$ cells/L	452	209.0	1.00 (0.90-1.11)	0.99 (0.89-1.09)
By gender				
Males	1348	211.3	Reference	Reference <sup>b</sup>
Female	1011	205.2	0.95 (0.88-1.04)	0.97 (0.89-1.05)
By age categories				
40-59 years	561	214.2	Reference	Reference <sup>c</sup>
60-79 years	1539	212.5	1.01 (0.92-1.11)	1.03 (0.93-1.13)
80+ years	259	179.3	0.89 (0.77-1.03)	0.99 (0.85-1.14)

We evaluated the risk of study outcomes stratified by ICS use, gender, and age using Cox regression analysis.

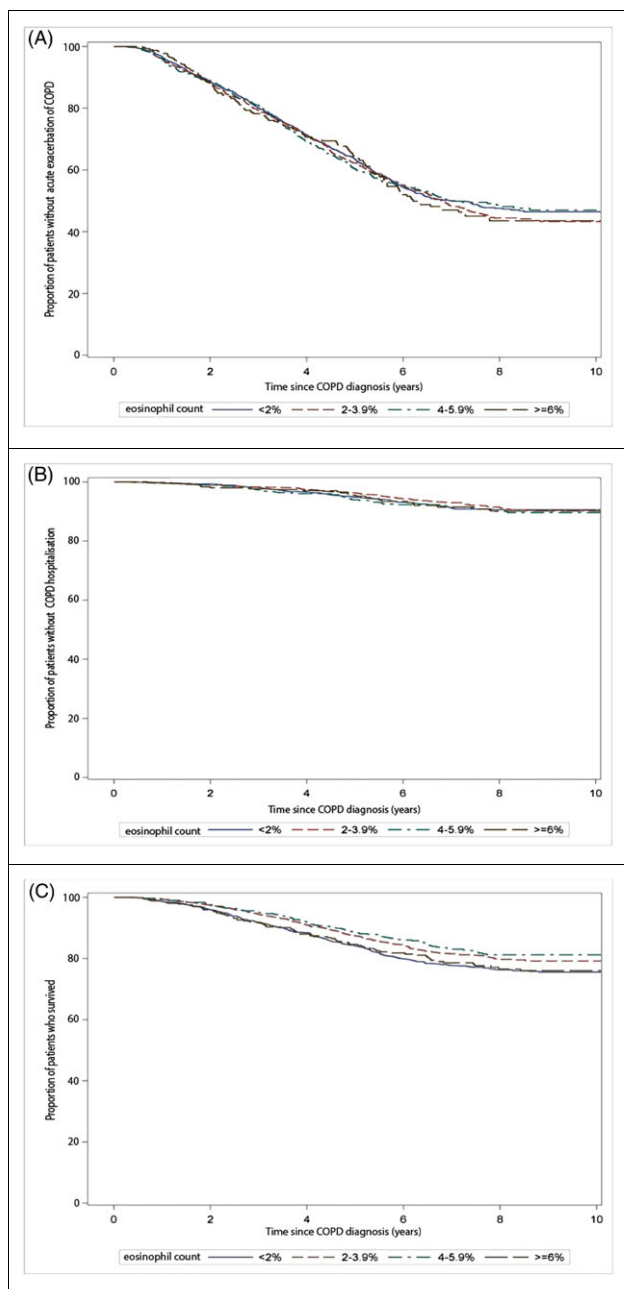
Abbreviations: COPD, chronic obstructive pulmonary disease; ICS, Inhaled corticosteroids; IR, incidence rate; HR, hazard ratio; CI, confidence interval; PY, person-years.

<sup>a</sup>Adjusted for age, gender, smoking status, alcohol use, BMI, a history of heart failure, diabetes mellitus, chronic liver disease, pulmonary fibrosis, ischaemic heart disease, osteoporosis, anxiety, hypertension, anaemia, and the use of antipsychotics, statins, oxygen, proton-pump inhibitors, antidepressants, or antipsychotics, long-acting beta-2 agonist, short-acting beta-2 agonist, short-acting muscarinic agent, long-acting muscarinic antagonist, xanthine derivatives, and oral corticosteroid use 6 months prior to the start of an interval.

<sup>b</sup>Adjusted for all confounders under (a) except gender.

<sup>c</sup>Adjusted for all confounders under (a) except age.

<sup>d</sup>14 523 exacerbations were recorded among 32 693 patients with COPD.



**FIGURE 2** Kaplan-Meier curve showing (A) the proportion of patients without exacerbations with current ICS users stratified by blood eosinophil counts, (B) the proportion of patients without COPD hospitalisations/accident and emergency visits among current ICS users stratified by blood eosinophil counts, and (C) the proportion of patients who survived among current ICS users stratified by relative blood eosinophil counts [Colour figure can be viewed at [wileyonlinelibrary.com](http://wileyonlinelibrary.com)]

with current female ICS users compared to current male ICS users (adj. HR 0.98; 95% CI 0.77-1.11, Table 3), and there were no differences in the risk of hospitalisations with increasing age groups (Table 3).

### 3.3 | All-cause mortality

Current use of ICS was associated with a statistically significantly increased risk of all-cause mortality (adj.HR 1.20; 95% CI 1.12-1.29)

compared to never ICS users (Table 4). In contrast to the previous outcomes, when current ICS users were stratified by relative blood eosinophil counts, we observed a decreased risk of all-cause mortality among patients with increased eosinophil counts as compared to those with low (<2%) eosinophil counts. We found a difference in risk of all-cause mortality between patients with low and moderate relative eosinophil counts ( $P = .001$ ). No difference was found with absolute blood eosinophil counts. The KM curve shows differences in the proportion of patients with COPD who survived, stratified by relative blood eosinophil counts (Figure 2C). Stratification to by absolute blood eosinophil count did not show a significant association with all-cause mortality adj HR 0.92; 95% CI (0.79-1.06) for patients with absolute eosinophil counts  $\geq 0.34 \times 10^9$  cells/L versus counts  $< 0.34 \times 10^9$  cells/L. Female users of ICS had a 21% decreased risk of all-cause mortality (adj.HR 0.79; 95% CI 0.69-0.88) compared to males, and we found an increased risk of all-cause mortality with age (Table 4).

## 4 | DISCUSSION

We found no reduced risk of COPD-related acute exacerbations or hospitalisations/AE visits among patients with blood eosinophilia among COPD patients using ICS. However, all-cause mortality was reduced among current ICS users with blood eosinophilia compared to current ICS users with low relative blood eosinophil count. However, this effect could not be detected with absolute eosinophil counts.

### 4.1 | ICS use and risk of exacerbations or COPD-related hospitalisations/AE visits

As compared to never users, current users of ICS had a significantly increased risk of exacerbations or COPD-related hospitalisations/AE visits, although the risk between recent and current users was comparable. Similarly, Melo et al found an increased risk of first exacerbation among COPD patients currently exposed to ICS.<sup>27</sup> Since ICS are prescribed in order to prevent these events, confounding by disease severity may explain this, in particular because the association is also present among ICS users who have recently stopped taking the drugs (recent users). Furthermore, recent and current users of ICS in our study might represent a different phenotype of COPD patients, maybe the so-called frequent exacerbators.<sup>29</sup> Although, a multicentre 4-year double blind study in COPD patients also reported an increased risk of first COPD exacerbation in patients exposed to any ICS compared to patients not exposed to ICS.<sup>30</sup>

### 4.2 | Impact of blood eosinophil counts on exacerbations and COPD-related hospitalisations/AE visits

Our findings are partially in line with previous research. While traditionally considered a characteristic of asthma, several studies have reported eosinophilic inflammation in patients with COPD.<sup>31,32</sup> A study by Pascoe and colleagues<sup>6</sup> concluded that COPD patients treated with ICS with higher blood eosinophil counts had reduced



**TABLE 3** Risk of COPD hospitalisations/AE visits with current use of ICS by eosinophil counts, gender, and age

	COPD Hospitalisations/ AE Visits (n = 1987) <sup>d</sup>	IR (/1000 PY)	Age and Gender-Adjusted HR (95% CI)	Adjusted HR (95% CI) <sup>a</sup>
By ICS use				
Never	973	11.9	Reference	Reference
Past	366	14.1	1.05 (0.93-1.19)	0.98 (0.87-1.11)
Recent	166	21.6	1.55 (1.31-1.82)	1.11 (0.93-1.31)
Current	482	24.5	1.71 (1.53-1.91)	1.17 (1.04-1.32)
By relative blood eosinophil count				
Low (<2.0%)	176	25.7	Reference	Reference
Moderate (≥2.0%-3.9%)	183	23.5	0.91 (0.73-1.11)	0.93 (0.75-1.14)
High (4.0%-5.9%)	78	25.1	0.96 (0.73-1.26)	0.99 (0.76-1.29)
Very high (≥6.0%)	45	23.9	0.93 (0.67-1.29)	0.97 (0.69-1.35)
By absolute blood eosinophil count				
<0.34 × 10 <sup>9</sup> cells/L	395	25.0	Reference	Reference
≥0.34 × 10 <sup>9</sup> cells/L	87	22.5	0.89 (0.71-1.13)	0.89 (0.70-1.12)
By gender				
Males	258	23.5	Reference	Reference <sup>b</sup>
Females	224	25.9	1.09 (0.91-1.31)	0.98 (0.77-1.11)
By age categories				
40-59 years	108	23.4	Reference	Reference <sup>c</sup>
60-79 years	326	25.4	1.11 (1.08-1.58)	1.18 (0.94-1.48)
80+ years	48	21.8	1.17 (0.73-1.44)	1.29 (0.89-1.85)

We evaluated the risk of hospitalisation/AE visits for COPD stratified by ICS use, gender, and age using Cox regression analysis.

Abbreviations: COPD, chronic obstructive pulmonary disease; ICS, inhaled corticosteroids; IR, incidence rate; HR, hazard ratio; CI, confidence interval; PY, person-years; AE, accident and emergency.

<sup>a</sup>Adjusted for age, gender, smoking status, alcohol use, BMI, a history of heart failure, diabetes mellitus, chronic liver disease, pulmonary fibrosis, ischaemic heart disease, osteoporosis, anxiety, hypertension, anaemia, and the use of antipsychotics, statins, oxygen, proton-pump inhibitors, antidepressants, antipsychotics, long-acting beta-2 agonist, short-acting beta-2 agonist, short-acting muscarinic agent, long-acting muscarinic antagonist, xanthine derivatives, and oral corticosteroid use 6 months prior to the start of an interval.

<sup>b</sup>Adjusted for all confounders under (a) except gender.

<sup>c</sup>Adjusted for all confounders under (a) except age.

<sup>d</sup>1987 COPD hospitalisations/AE visits occurred in 32 693 patients with COPD.

exacerbations compared to those with low blood eosinophil counts. While our observational study results are in contrast to this, it is important to note that we excluded patients with a history of asthma while Pascoe and coworkers excluded only active asthma patients and included patients with a history of one or more exacerbations in the previous year.<sup>33</sup> The FLAME trial evaluated the time to the first exacerbation in COPD patients exposed to indacaterol/glycopyrronium compared to salmeterol/fluticasone and found no significant risk reduction in exacerbation among patients with blood eosinophil levels of 150 up to 300 cells/ $\mu$ L, versus 300 cells/ $\mu$ L or more.<sup>8</sup> When comparing our results to both previous studies, an important distinction was the comparator group, which may explain differences in results. Our findings were consistent with post hoc analyses from the ISOLDE trial.<sup>34</sup> It showed no difference in the time-to-first exacerbation in patients with high or low eosinophil counts. It is important to note that our study also employed the time-to-first exacerbation approach. Similar to our study, 3 randomised clinical trials that studied blood eosinophils and ICS/long acting bronchodilator reported no statistically significant effects for time to first moderate/severe exacerbation in patients with relative eosinophils counts  $\geq 2\%$  versus counts  $< 2\%$ .<sup>35</sup>

### 4.3 | Impact of blood eosinophil counts on all-cause mortality

Our findings are in agreement with a study which evaluated the 3-year survival using relative eosinophil count cutoff of  $\geq 2\%$ , which showed that COPD patients with higher blood eosinophil counts had a significantly decreased 3-year mortality compared to COPD patients with blood eosinophil counts  $< 2\%$  exposed to ICS.<sup>36</sup> However a randomised, double-blind, placebo-controlled study by Barnes and coworkers<sup>34</sup> using subjects from the ISOLDE study found no difference in the risk of deaths in COPD patients exposed to ICS with different eosinophil counts. Similarly, a clinical study involving 303 patients with COPD found that elevated blood eosinophil counts ( $\geq 200$ , 300, 400 cells/ $\mu$ L) were not associated with mortality when compared with patients with decreased eosinophil counts.<sup>37</sup>

In recent years, various researchers have questioned the use of the 2% cutoff adopted by various studies to determine effective response to ICS in patients with COPD; others have argued in favour of the use of absolute blood eosinophil counts in making clinically beneficial decisions for patients with COPD.<sup>5,38,39</sup> As absolute counts are

**TABLE 4** Risk of all-cause mortality with current use of ICS by baseline eosinophil counts, gender, and age

	All-Cause Mortality (n = 6181) <sup>d</sup>	IR (/1000 PY)	Age and Gender-Adjusted HR (95% CI)	Adjusted HR (95% CI) <sup>a</sup>
By ICS use				
Never	3160	38.3	Reference	Reference
Past	1343	49.8	1.32 (1.23-1.39)	1.25 (1.17-1.33)
Recent	484	59.7	1.67 (1.52-1.84)	1.36 (1.23-1.49)
Current	1194	57.4	1.56 (1.46-1.67)	1.20 (1.12-1.29)
By relative blood eosinophil count				
Low (<2.0%)	477	65.5	Reference	Reference
Moderate (≥2.0%-3.9%)	435	52.9	0.81 (0.71-0.92)	0.88 (0.77-0.99)
High (4.0%-5.9%)	168	51.2	0.73 (0.61-0.87)	0.79 (0.66-0.94)
Very high (≥6.0%)	114	56.7	0.71 (0.58-0.87)	0.76 (0.62-0.93)
By absolute blood eosinophil count				
<0.34 × 10 <sup>9</sup> cells/L	959	57.4	Reference	Reference
≥0.34 × 10 <sup>9</sup> cells/L	235	57.1	0.90 (0.78-1.04)	0.92 (0.79-1.06)
By gender				
Males	712	60.9	Reference	Reference <sup>b</sup>
Females	482	52.8	0.81 (0.72-0.91)	0.79 (0.69-0.86)
By age categories				
40-59 years	88	17.9	Reference	Reference <sup>c</sup>
60-79 years	729	53.6	2.97 (2.38-3.70)	2.38 (1.89-3.00)
80+ years	377	164.5	9.31 (7.31-11.74)	5.07 (3.96-6.49)

Abbreviations: COPD, chronic obstructive pulmonary disease; ICS, Inhaled corticosteroids; IR, incidence rate; HR, hazard ratio; CI, confidence interval; PY, person-years.

<sup>a</sup>Adjusted for age, gender, smoking status, alcohol use, BMI, heart failure, atrial fibrillation, diabetes, anxiety, chronic liver disease, all cancers except non-melanoma skin cancer, stroke, antipsychotics, long-acting beta-2 agonist, short-acting beta-2 agonist, short-acting muscarinic agent, long-acting muscarinic antagonist, xanthine derivatives and oral corticosteroid use 6 months prior to the start of an interval.

<sup>b</sup>Adjusted for all confounders under (a) except gender.

<sup>c</sup>Adjusted for all confounders under (a) except age.

<sup>d</sup>6181 patients died after follow-up of 32 693 patients with COPD.

less affected by total white blood cell count,<sup>8</sup> Vedel-Krogh et al suggested that 0.34 × 10<sup>9</sup> cells/L cutoff was appropriate in detecting COPD exacerbations because this cutoff was associated with increased risk of moderate and severe exacerbations in patients with COPD in population-based settings.<sup>5</sup> The exact mechanism underlying the presumed changes in COPD-related exacerbation in patients with varying baseline blood eosinophil counts remains unclear.<sup>6,7</sup> However, it might be due to the non-T helper 2 eosinophilic inflammation in COPD, induced by the epithelial innate lymphoid cell type 2 pathways. Innate lymphoid cell type 2 has been recognised in relation to the pathogenesis in severe nonallergic eosinophilic asthma.<sup>40</sup>

#### 4.4 | Strengths and limitations

A major strength to this study was the use of data from one of the world's largest primary care databases, thereby providing a very large population-based cohort of COPD patients with eosinophil measurements. Second, we used a validated definition for an acute exacerbation of COPD, using read codes which were reported to show a 96% PPV of identifying an acute exacerbation within the CPRD.<sup>18</sup> Nevertheless, we may have missed a considerable amount of exacerbations that may be miscoded, eg, as respiratory tract infections or pneumonia. Third, classification of exposure to ICS and covariates time-

dependently during follow-up allowed us to conduct an "on treatment analysis," which results in less nondifferential misclassification of exposure than in an "intention to treat analysis" which ignores ICS exposure during follow-up. Fourth, we eliminated patients with a history of asthma to avoid patients with reversible airflow limitation from our study. Lastly, we had information on important confounding factors such as smoking status, BMI, and other comorbidities and drug use.

Despite numerous strengths, this study also had limitations. In addition to those already mentioned, there is a potential for residual confounding as we lacked information on the disease severity and previous exacerbations. Although the positive predictive value of identifying patients with COPD in the CPRD is 90%,<sup>11</sup> lung function data were unavailable. While we excluded asthma patients, it was impossible to rule out the inclusion of patients with reversible airflow limitation.<sup>41</sup> We lacked information on cause-specific mortality; as such, we could not perform detailed analysis on the cause of death. Eosinophil counts are not been routinely collected as part of diagnosis of COPD patients, and thus, the patient population in this study may not be representative of all COPD patients. Moreover, this could have masked a true association between eosinophil counts and various outcomes. Inhaled corticosteroid inhalers are known to last for 25 to 100 days depending on the active ingredient and the dose

prescribed by the GP<sup>42</sup>; this might have led to a nondifferential misclassification of ICS exposure, masking the true effect (bias towards the null) leading to insignificant findings. Without this potential distortion, the risk of acute exacerbations or hospitalisation/AE visits might have been lower for patients with elevated blood eosinophil counts. However, we detected a significant risk of all-cause mortality irrespective of blood eosinophil counts; we do not believe that our results are influenced by the potential of a nondifferential misclassification.

In conclusion, among COPD patients, we did not find a reduced risk of COPD-related acute exacerbations or hospitalisations/AE visits among patients with blood eosinophilia in COPD patients using ICS. However, all-cause mortality was reduced among current ICS users with blood eosinophilia compared to current ICS users with low relative blood eosinophil count. However, this effect could not be detected with the absolute eosinophil counts. There is an increasing body of evidence linking blood eosinophil counts to clinically relevant outcomes in patients with COPD. As such, these findings are potentially important and require further evaluation in prospective studies.

## ETHICS STATEMENT

The authors state that no ethical approval was needed.

## CONFLICT OF INTEREST

The authors declare no conflict of interest.

## AUTHOR CONTRIBUTIONS

Conception or design: All authors equally contributed.

Analysis of data: OO and AB

Interpretation of data: All authors equally contributed.

Drafting the work OO, FV, FF, and AB

Revising the work critically for important intellectual content: All authors equally contributed.

Final approval of the version to be published: All authors equally contributed.

## ORCID

Olorunfemi A. Oshagbemi  <http://orcid.org/0000-0003-0653-0443>

Anke-Hilse Maitland-van der Zee  <http://orcid.org/0000-0002-0414-3442>

## REFERENCES

- Vogelmeier CF, Criner GJ, Martinez FJ, et al. Global strategy for the diagnosis, management, and prevention of chronic obstructive lung disease 2017 report. GOLD executive summary. *Am J Respir Crit Care Med [Internet]*. 2017;195(5):557-582. Available from: doi: <https://doi.org/10.1164/rccm.201701-0218PP>
- Calverley PMA, Anderson JA, Celli B, et al. Salmeterol and fluticasone propionate and survival in chronic obstructive pulmonary disease. *N Engl J Med [internet]*. 2007;356(8):775-789. Available from: <http://www.ncbi.nlm.nih.gov/26641631/17314337>
- Wedzicha JA, Seemungal TA. COPD exacerbations: defining their cause and prevention. *Lancet*. 2007;370(9589):786-796.
- Kew KM, Seniukovich A. Inhaled steroids and risk of pneumonia for chronic obstructive pulmonary disease. *Cochrane Database Syst Rev [Internet]*. 2014;3:CD010115. Available from: <http://www.ncbi.nlm.nih.gov/26641631/24615270/nhttps://doi.org/10.1002/14651858.CD010115.pub2>
- Vedel-Krogh S, Nielsen SF, Lange P, Vestbo J, Nordestgaard BG. Blood eosinophils and exacerbations in COPD: the Copenhagen General Population Study. *Am J Respir Crit Care Med [Internet]*. 2015; rccm.201509-1869OC. Available from: <http://www.atsjournals.org/doi/10.1164/rccm.201509-1869OCn> <http://www.ncbi.nlm.nih.gov/26585525/26641631>
- Pascoe S, Locantore N, Dransfield MT, Barnes NC, Pavord I. Blood eosinophil counts as markers of response to inhaled corticosteroids in COPD? Authors' reply. *Lancet Respir Med*. 2015;3(8):e27.
- Watz H, Tetzlaff K, Wouters EFM, et al. Blood eosinophil count and exacerbations in severe chronic obstructive pulmonary disease after withdrawal of inhaled corticosteroids: a post-hoc analysis of the WISDOM trial. *Lancet Respir Med*. 2016;4(5):390-398.
- Roche N, Chapman KR, Vogelmeier CF, et al. Blood eosinophils and response to maintenance COPD treatment: data from the FLAME trial. *Am J Respir Crit Care Med [Internet]*. 2017; Available from: doi: <https://doi.org/10.1164/rccm.201701-0193OC>;195(9):1189-1197.
- Calverley PMA, Tetzlaff K, Vogelmeier C, et al. Eosinophilia, frequent exacerbations, and steroid response in chronic obstructive pulmonary disease. *Am J Respir Crit Care Med*. 2017;(ja);196(9):1219-1221.
- Price D, Wilson AM, Chisholm A, et al. Predicting frequent asthma exacerbations using blood eosinophil count and other patient data routinely available in clinical practice. *J Asthma Allergy [Internet]*. 2016;9:1-12. Available from: <https://www.dovepress.com/predicting-frequent-asthma-exacerbations-using-blood-eosinophil-count-peer-reviewed-article-JAA>
- Quint JK, Müllerova H, DiSantostefano RL, et al. Validation of chronic obstructive pulmonary disease recording in the Clinical Practice Research Datalink (CPRD-GOLD). *BMJ Open [Internet]*. 2014;4(7). Available from: <http://bmjopen.bmj.com/content/4/7/e005540.abstract>
- Herrett E, Gallagher AM, Bhaskaran K, et al. Data resource profile: Clinical Practice Research Datalink (CPRD). *Int J Epidemiol*. 2015;44(3):827-836.
- Taggar JS, Coleman T, Lewis S, Szatkowski L. The impact of the Quality and Outcomes Framework (QOF) on the recording of smoking targets in primary care medical records: cross-sectional analyses from The Health Improvement Network (THIN) database. *BMC Public Health [Internet]*. 2012;12(1):1-11. Available from: doi: <https://doi.org/10.1186/1471-2458-12-329>
- Rothnie K, Mullerova H, Hurst J, et al. Validation of the recording of acute exacerbations of COPD in the clinical practice research datalink: Phase 1 results. *Eur Respir J [Internet]*. 2015;46(suppl 59). Available from: [http://erj.ersjournals.com/content/46/suppl\\_59/PA4067](http://erj.ersjournals.com/content/46/suppl_59/PA4067)
- Barakat MF, McDonald HI, Collier TJ, Smeeth L, Nitsch D, Quint JK. Acute kidney injury in stable COPD and at exacerbation. *Int J Chron Obstruct Pulmon Dis [Internet]*. 2015;10(1):2067-2077. Available from: <http://www.scopus.com/inward/record.url?eid=2-s2.0-84943158973&partnerID=tZOTx3y1>
- Mullerova H, Shukla A, Hawkins A, Quint J. Risk factors for acute exacerbations of COPD in a primary care population: a retrospective observational cohort study. *BMJ Open*. 2014;4(12):e006171.
- Wurst KE, Shukla A, Muellerova H, Davis KJ. Respiratory pharmacotherapy use in patients newly diagnosed with chronic obstructive pulmonary disease in a primary care setting in the UK: a retrospective cohort study. *COPD [Internet]*. 2014;11(5):521-530. Available from: [http://search.proquest.com/docview/1561971611?accountid=14732%5Cnhttp://bd9jx6as9l.search.serialssolutions.com/?ctx\\_ver=Z39.88-2004&ctx\\_enc=info:ofi/enc:UTF-8&rft\\_id=info:sid/ProQ:medlineshell&rft\\_val\\_fmt=info:ofi/fmt:kev:mtx:journal&rft.genre=article&rft](http://search.proquest.com/docview/1561971611?accountid=14732%5Cnhttp://bd9jx6as9l.search.serialssolutions.com/?ctx_ver=Z39.88-2004&ctx_enc=info:ofi/enc:UTF-8&rft_id=info:sid/ProQ:medlineshell&rft_val_fmt=info:ofi/fmt:kev:mtx:journal&rft.genre=article&rft)
- Rothnie KJ, Müllerová H, Hurst JR, et al. Validation of the recording of acute exacerbations of COPD in UK primary care electronic healthcare records. *PLoS One*. 2016;11(3):e0151357.



19. Oshagbemi OA, Burden AM, Braeken DCW, et al. Stability of blood eosinophils in patients with chronic obstructive pulmonary disease and in control subjects, and the impact of sex, age, smoking, and baseline counts. *Am J Respir Crit Care Med*. 2017;195(10):1402-1404.
20. Landis SH, Suruki R, Hilton E, Compton C, Galwey NW. Stability of blood eosinophil count in patients with COPD in the UK clinical practice research Datalink. *COPD J Chronic Obstr Pulm Dis*. 2017;14(4):382-388.
21. European Medicines Agency. The European Network of Centres for Pharmacoeconomics and Pharmacovigilance (ENCePP) Guide on Methodological Standards in Pharmacoeconomics (Revision 4). 2015;44(June):1-77.
22. Cavaillès A, Brinchault-Rabin G, Dixmier A, et al. Comorbidities of COPD. *Eur Respir Rev*. 2013;22(130):454-475.
23. Chatila WM, Thomashow BM, Minai OA, Criner GJ, Make BJ. Comorbidities in chronic obstructive pulmonary disease. *Proc Am Thorac Soc*. 2008;5(4):549-555.
24. Dal Negro RW, Bonadiman L, Turco P. Prevalence of different comorbidities in COPD patients by gender and GOLD stage. *Multidiscip Respir Med [Internet]*. 2015;10(1):24. Available from: <http://www.26585525central.nih.gov/articlerender.fcgi?artid=4525744%26;tool=pmcentrez%26;rendertype=abstract>
25. Franssen FME, Rochester CL. Comorbidities in patients with COPD and pulmonary rehabilitation: do they matter? *Eur Respir Rev*. 2014;23(131):131-141.
26. Divo M, Cote C, De Torres JP, et al. Comorbidities and risk of mortality in patients with chronic obstructive pulmonary disease. *Am J Respir Crit Care Med*. 2012;186(2):155-161.
27. de Melo MN, Ernst P, Suissa S. Inhaled corticosteroids and the risk of a first exacerbation in COPD patients. *Eur Respir J [Internet]*. 2004;23(5):692-697. Available from: <http://www.scopus.com/inward/record.url?eid=2-s2.0-2442613152&partnerID=40&md5=6f084b2640a022de897acb2bc1456a14>
28. Ernst P, Gonzalez AV, Brassard P, Suissa S. Inhaled corticosteroid use in chronic obstructive pulmonary disease and the risk of hospitalization for pneumonia. *Am J Respir Crit Care Med*. 2007;176(2):162-166.
29. Hurst JR, Vestbo J, Anzueto A, et al. Susceptibility to exacerbation in chronic obstructive pulmonary disease. *N Engl J Med*. 2010;363(12):1128-1138.
30. Morjaria JB, Rigby A, Morice AH. Inhaled corticosteroid use and the risk of pneumonia and COPD exacerbations in the UPLIFT study. *Lung*. 2017;195(3):281-288.
31. Bafadhel M, McKenna S, Terry S, et al. Acute exacerbations of chronic obstructive pulmonary disease: identification of biologic clusters and their biomarkers. *Am J Respir Crit Care Med*. 2011;184(6):662-671.
32. Singh D, Kolsum U, Brightling CE, Locantore N, Agusti A, Tal-Singer R. Eosinophilic inflammation in COPD: prevalence and clinical characteristics. *Eur Respir J [Internet]*. 2014. Available from: <http://erj.ersjournals.com/content/early/2014/10/16/09031936.00162414>
33. Groenke L, Disse B. Blood eosinophil counts as markers of response to inhaled corticosteroids in COPD? *Lancet Respir Med*. 2015;3(8):e26.
34. Barnes NC, Sharma R, Lettis S, Calverley PMA. Blood eosinophils as a marker of response to inhaled corticosteroids in COPD. *Eur Respir J [Internet]*. 2016;47(5):1374-1382. Available from: <http://erj.ersjournals.com/content/early/2016/02/25/13993003.01370-2015.abstract>.
35. Pavord ID, Agusti A. Blood eosinophil count: a biomarker of an important treatable trait in patients with airway disease. *Eur Respir J [Internet]*. 2016;47(5):1299 LP-1303. Available from: <http://erj.ersjournals.com/content/47/5/1299.abstract>
36. Zysman M, Burgel PR, Paillasseur JL, et al. Relationship between blood eosinophil count (Eos), clinical characteristics and mortality of patients with COPD. *Eur Respir J [Internet]*. 2016;48(suppl 60). Available from: [http://erj.ersjournals.com/content/48/suppl\\_60/PA4614.abstract](http://erj.ersjournals.com/content/48/suppl_60/PA4614.abstract)
37. Marin Trigo JM, Martinez M, Cubero P, Forner M, Saetta M, Cosio MG. Blood eosinophils and outcomes in COPD. *Eur Respir J [Internet]*. 2016;48(suppl 60). Available from: [http://erj.ersjournals.com/content/48/suppl\\_60/PA4624.abstract](http://erj.ersjournals.com/content/48/suppl_60/PA4624.abstract)
38. Pavord ID, Lettis S, Locantore N, et al. Blood eosinophils and inhaled corticosteroid/long-acting  $\beta$ -2 agonist efficacy in COPD. *Thorax [Internet]*. 2016;71(2):118-125. Available from: <http://www.ncbi.nlm.nih.gov/pubmed/26585525%5Cn> <http://www.pubmedcentral.nih.gov/articlerender.fcgi?artid=PMC4752631>
39. Iyer AS, Dransfield MT. Serum eosinophils as a COPD biomarker: ready for prime time? *Lancet Respir Med [Internet]*. 2016 [cited 2016 Nov 11];4(5):341-343. Available from: <http://thelancet.com/article/S2213260016300406/fulltext>
40. Cheng S-L, Lin C-H. Effectiveness using higher inhaled corticosteroid dosage in patients with COPD by different blood eosinophilic counts. *Int J Chron Obstruct Pulmon Dis [Internet]*. 2016 [cited 2017 Feb 15];11(1):2341-2348. Available from: <https://www.dovepress.com/effectiveness-using-higher-inhaled-corticosteroid-dosage-in-patients-w-peer-reviewed-article-COPD>
41. Gorska K, Krenke R, Korczynski P, Kosciuch J, Domagala-Kulawik J, Chazan R. Eosinophilic airway inflammation in chronic obstructive pulmonary disease and asthma. *J Physiol Pharmacol [Internet]*. 2008;59(Suppl 6):261-270. Available from: <http://www.ncbi.nlm.nih.gov/pubmed/19218650>
42. NHS. Inhaler Repeat Prescriptions [Internet]. 2002 [cited 2017 Jan 4]; Available from: [http://www.neneccg.nhs.uk/resources/uploads/files/Inhaler-Repeat-Prescriptions\\_Patient information leaflet.pdf](http://www.neneccg.nhs.uk/resources/uploads/files/Inhaler-Repeat-Prescriptions_Patient%20information%20leaflet.pdf)

**How to cite this article:** Oshagbemi OA, Franssen FME, Braeken DCW, et al. Blood eosinophilia, use of inhaled corticosteroids, and risk of COPD exacerbations and mortality. *Pharmacoeconomics Drug Saf*. 2018;27:1191-1199. <https://doi.org/10.1002/pds.4655>