

Keywords: colorectal cancer; Notch;  $\gamma$ -secretase inhibitor; Wnt

# Tumours with elevated levels of the Notch and Wnt pathways exhibit efficacy to PF-03084014, a $\gamma$ -secretase inhibitor, in a preclinical colorectal explant model

J J Arcaroli<sup>1</sup>, K S Quackenbush<sup>1</sup>, A Purkey<sup>1</sup>, R W Powell<sup>1</sup>, T M Pitts<sup>1</sup>, S Bagby<sup>1</sup>, A C Tan<sup>1</sup>, B Cross<sup>1</sup>, K McPhillips<sup>1</sup>, E-K Song<sup>1</sup>, W M Tai<sup>1</sup>, R A Winn<sup>2</sup>, K Bikkavilli<sup>2</sup>, M VanScoyk<sup>2</sup>, S G Eckhardt<sup>1</sup> and W A Messersmith<sup>\*,1</sup>

<sup>1</sup>Department of Medicine, Division of Medical Oncology, University of Colorado Cancer Center, University of Colorado Denver Anschutz Medical Campus, Aurora, CO, USA and <sup>2</sup>Department of Medicine, Division of Pulmonary Critical Care, University of Colorado Denver Anschutz Medical Campus, Aurora, CO, USA

**Background:** Dysregulation of the Notch pathway has been identified to play an important role in the development and progression of colorectal cancer (CRC). In this study, we used a patient-derived CRC explant model to investigate the efficacy of the clinical  $\gamma$ -secretase inhibitor (GSI) PF-03084014.

**Methods:** A total of 16 CRC explants were treated with PF-03084014. Knockdown of *RBPjk* gene was used to determine the specificity of PF-03084014. Evaluation of the Notch and Wnt pathways in CRC explant tumours was performed by gene array and immunoblotting.

**Results:** We identified a subset of CRC tumours that exhibited elevations of the Notch and Wnt pathways sensitive to PF-03084014. Treatment with the GSI resulted in a significant reduction in cleaved Notch, Axin2 (Wnt-dependent gene) and active  $\beta$ -catenin. In addition, knockdown of the *RBPjk* gene showed that PF-03084014 has specificity for the Notch pathway in an HCT116 cell line xenograft model. Finally, an increase in apoptosis was observed in CRC001- and CRC021-sensitive tumours.

**Conclusion:** This study provides evidence that inhibition of  $\gamma$ -secretase may be beneficial in a subset of patients with elevated levels of the Wnt and Notch pathways.

Colorectal cancer (CRC) is the second most common cancer in the United States and the third leading cause of cancer-related death (Siegel *et al*, 2012). Although earlier stages of CRC are highly curable, therapies in advanced and metastatic disease overall have been ineffective at reducing 5-year survival rates. Recent drug development has focused on targeting developmental pathways such as the Notch pathway as a potential therapy for CRC. The Notch pathway has a vital role in normal colon homeostasis by maintaining stem/progenitor cells and by regulating the differentiation of goblet cells (Fre *et al*, 2005; Radtke *et al*, 2006). Although mutations in the Notch receptors have not been

described in CRC, aberrant activation of the Notch pathway has been shown to facilitate the development and progression of CRC (van Es *et al*, 2005; Sikandar *et al*, 2010; Sonoshita *et al*, 2011). For instance, in an intestinal adenomatous polyposis coli (APC)  $-/-$  mouse model, components of the Notch pathway were demonstrated to be upregulated in the crypts of the intestine; treatment with a  $\gamma$ -secretase inhibitor (GSI) resulted in the conversion of proliferative cells into more differentiated goblet cells resulting in a reduction in tumour burden. In addition, the Notch pathway has been described to be important in CRC progression. A decrease in AES (Grg5) resulted in enhanced Notch activity and tumour

\*Correspondence: Dr W Messersmith; E-mail: wells.messersmith@ucdenver.edu

Revised 14 June 2013; accepted 17 June 2013; published online 18 July 2013

© 2013 Cancer Research UK. All rights reserved 0007–0920/13

invasion that was prevented by inhibition of the Notch pathway (Sonoshita *et al*, 2011).

The Notch pathway is activated through the interaction of a Notch receptor (1, 2, 3, or 4) and ligand (DLL1, DLL3, DLL4, JAG-1, and JAG-2) between adjacent cells. This contact results in a series of proteolytic events that lead to the cleavage of the notch intracellular domain (NICD) by the  $\gamma$ -secretase complex and subsequent translocation of NICD into the nucleus and the transcription of Notch target genes (Pannuti *et al*, 2010). In CRC, activation of the Notch pathway appears to be oncogenic by regulating many signalling pathways involved in enhancing cellular survival and angiogenesis. In particular, Notch has been shown to augment cell-cycle progression and survival by activating the PI3K/AKT pathway (Nair *et al*, 2003; Sade *et al*, 2004) and transcriptionally inducing the expression of Hes-1, cyclin D1 and c-Myc (Ronchini and Capobianco, 2001; van Es *et al*, 2005; Zhang *et al*, 2012). The Notch pathway has also been shown to modulate tumour angiogenesis and is widely expressed in endothelial cells (Noguera-Troise *et al*, 2006). Specifically, VEGF from tumour cells induces DLL4 expression on endothelial cells and Notch signalling that results in an increase in vessel formation (Noguera-Troise *et al*, 2006).

Since the Notch pathway appears to be important in the development and progression of CRC as well as other cancers, drug development of GSIs is currently being evaluated in early phase clinical trials. PF-03084014 is a potent and selective inhibitor of  $\gamma$ -secretase activity and is currently in phase I clinical development. Unlike other agents in this class, PF-03084014 has favourable properties and daily dosing is feasible (Messersmith *et al*, 2011). In a preclinical model of T-cell acute lymphoblastic leukemia (T-ALL), this inhibitor has shown to induce cell growth arrest by hindering cell-cycle progression and enhancing apoptosis (Wei *et al*, 2010). In breast cancer cell line xenografts, PF-03084014 altered endothelial cell tube formation and had anti-tumour and anti-angiogenic activity (Zhang *et al*, 2012). However, the efficacy of PF-03084014 in CRC has not been examined. Therefore, we evaluated the effects of PF-03084014 in our patient-derived CRC explant model and show that a subset of tumours that exhibit increased levels of the Notch and Wnt pathways are sensitive to PF-03084014.

## MATERIALS AND METHODS

**CRC explant xenograft model.** Patient-derived colorectal adenocarcinoma tumour specimens were obtained from consenting patients at the University of Colorado Hospital in accordance with protocols approved by the Colorado Multiple Institutional Review Board. Four- to six week-old female athymic ( $nu^+/nu^+$ ) mice were obtained from Harlan Laboratories (Washington, DC, USA) under an approved research protocol by the Institutional Animal Care and Use Committee. The tumour pieces were implanted in mice and expansion of the F1–F3 generations was carried out as previously described (Rubio-Viqueira *et al*, 2006; Dangles-Marie *et al*, 2007). Tumours were expanded in the left and right flanks of 5–6 mice (10 evaluable tumours per group). Mice were randomised into vehicle or PF-03084014 (GSI) groups when tumour volumes reached  $\sim 200 \text{ mm}^3$ . Mice were treated daily with PF-03084014 ( $125 \text{ mg kg}^{-1}$  – BID) by oral gavage for 28 days. Mice were monitored daily for signs of toxicity, and the tumour size was evaluated twice per week by caliper measurements using the following formula: tumour volume = (length  $\times$  width<sup>2</sup>)  $\times$  0.52.

**Cell lines and culture.** Human CRC cell lines were obtained from the American Type Culture Collection (Manassas, VA, USA). Cells were cultured in RPMI supplemented with 10% fetal bovine serum, 1% non-essential amino acids, and 1% penicillin/streptomycin, and were maintained at 37 °C under an atmosphere containing 5%

CO<sub>2</sub>. The cells were routinely screened for the presence of Mycoplasma (MycoAlert; Cambrex BioScience, Charles City, IA, USA) and were exposed to PF-03084014 (5–0.08  $\mu\text{M}$ ) when they reached  $\sim 70\%$  confluence. All cell lines were tested and authenticated in the University of Colorado Cancer Center DNA Sequencing and Analysis Core. The CRC cell line DNA was tested using the Profiler Plus kit (Applied Biosystems, Foster City, CA, USA). The data obtained were compared with American Type Culture Collection data to ensure the cell lines have not changed.

**Immunoblotting.** Tumour tissues (50–75 mg per mouse) were minced on ice and homogenised using a Dounce homogenizer (Fisher Scientific, Pittsburgh, PA, USA) and centrifuged at 16 000 g at 4 °C for 10 min. The total protein in samples was determined using the Bio-Rad Dc Protein Assay kit, Bio-Rad, Hercules, CA, USA. Forty micrograms of sample were electrophoresed on 4–12% Bis-Tris precast gels (Life Technologies, Grand Island, NY, USA). After electrotransfer onto Immobilon-P membranes (Millipore, Billerica, MA, USA), membranes were blocked at room temperature with TBS (10 mmol l<sup>-1</sup> Tris-HCl (pH 7.5), 0.5 mol l<sup>-1</sup> NaCl, and 0.1% (v/v) Tween-20) containing 5% non-fat milk (Bio-Rad) for 1 h. Cleaved Notch, active  $\beta$ -catenin,  $\beta$ -catenin, Axin2, cleaved caspase 3, cleaved PARP, p-p65, BCLxL, and actin primary antibodies (Cell Signaling Technologies, Danvers, MA, USA) were diluted at 1:1000 in TBST containing 5% protease-free bovine serum albumin (Sigma-Aldrich, St Louis, MO, USA), and the membranes were incubated overnight at 4 °C with rocking. After washing three times with TBST, the membranes were incubated for 1 h at room temperature with anti-mouse IgG horseradish peroxidase-conjugated antibody at a final dilution of 1:50 000 in TBST. After washing three times with TBST, bound antibodies were detected by enhanced chemiluminescence (Millipore).

**RBPj $\kappa$  shRNA knockdown and xenograft.** RBPj $\kappa$  (TF302060) shRNA and pRS vector-negative control (scramble) plasmids (TR20003) were purchased from OriGene (Rockville, MD, USA). Stable clones were generated by transfecting HCT116 cell line in six-well plate with 1  $\mu\text{g}$  of each of the shRNA plasmids using Fugene 6 (Roche, Nutley, NJ, USA) according to the manufacturer's recommendations. Seventy-two hours after transfection, the cells were placed under selection with 2.5  $\mu\text{g ml}^{-1}$  puromycin, splitting 1:5 when the cells reached confluency. Multiple clones from the same transfection were pooled and grown under puromycin selection. Successful knockdown of specific genes and gene products was confirmed by semi-quantitative reverse transcription PCR. HCT116 parental, scramble, and RBPj $\kappa$  knockdown were injected into the left and right flanks of 4- to 6-week-old female athymic ( $nu^+/nu^+$ ) mice (Harlan Laboratories). Mice were randomised into the treatment group (PF-03084014) or vehicle group when tumour volumes reached  $\sim 200 \text{ mm}^3$ . Mice were treated daily with PF-03084014 ( $125 \text{ mg kg}^{-1}$  – BID) or vehicle by oral gavage. Mice were monitored daily for signs of toxicity, and the tumour size was evaluated twice per week by caliper measurements using the following formula: tumour volume = (length  $\times$  width<sup>2</sup>)  $\times$  0.52.

**RT-PCR.** RT-PCR was used to evaluate the knockdown of RBPj $\kappa$  for the shRNA experiments. Total RNA was extracted using the RNeasy Mini kit (Qiagen, Valencia, CA, USA). cDNA was synthesised using the Applied Biosystems high capacity cDNA reverse transcription kit, following the manufacturer's instructions. Validated and pre-designed primer/probes for RBPj $\kappa$  and house-keeping gene(s) were purchased from Applied Biosystems. Samples were amplified using the ABI Step One Plus RT-PCR system (Applied Biosystem). Relative expression of the mRNA analysed was estimated using the formula:  $2^{-\Delta\text{CT}}$ , where  $\Delta\text{CT} = \text{C}_\text{T}$  (mRNA) –  $\text{C}_\text{T}$  (Housekeeper).

**Notch and Wnt pathway analysis by gene array.** Total RNA from the CRC explants was extracted using RNAeasy kit (Qiagen) and profiled by Affymetrix Human Gene 1.0 ST microarray (Affymetrix, Santa Clara, CA, USA). Microarray gene expression preparation and processing procedure were done as recommended by the manufacturer (Affymetrix, Inc.). Raw expression values were extracted and normalised by the Affymetrix Power Tools based on Robust Multiarray Average (RMA) approach. Multiple probe sets representing the same gene were collapsed by the maximum value. To analyse the pathway enriched in the sensitive *vs* resistant explants, we used the GSEA (gene set enrichment analysis) software version 2.0.6 obtained from the Broad Institute (<http://www.broad.mit.edu/gsea>) (Subramanian *et al*, 2005). We used the pathways defined by the Kyoto Encyclopedia of Genes and Genomes (KEGG) as the gene set in this study (Kanehisa *et al*, 2008). Gene set permutations were performed 1000 times for each analysis. We used the nominal *P*-value and Normalised Enrichment Score (NES) obtained from GSEA to sort the pathways enriched in sensitive explants.

**Statistical analysis.** An unpaired Student's *t*-test was used to determine whether the means between control and PF-03084014 were significant at end of treatment (~28 days) and for comparison of differences between control and PF-03084014 in cleaved Notch, Axin2, and active  $\beta$ -catenin. The differences were considered as significant when the *P*-value was <0.05. All error bars are represented as the s.e.m.

## RESULTS

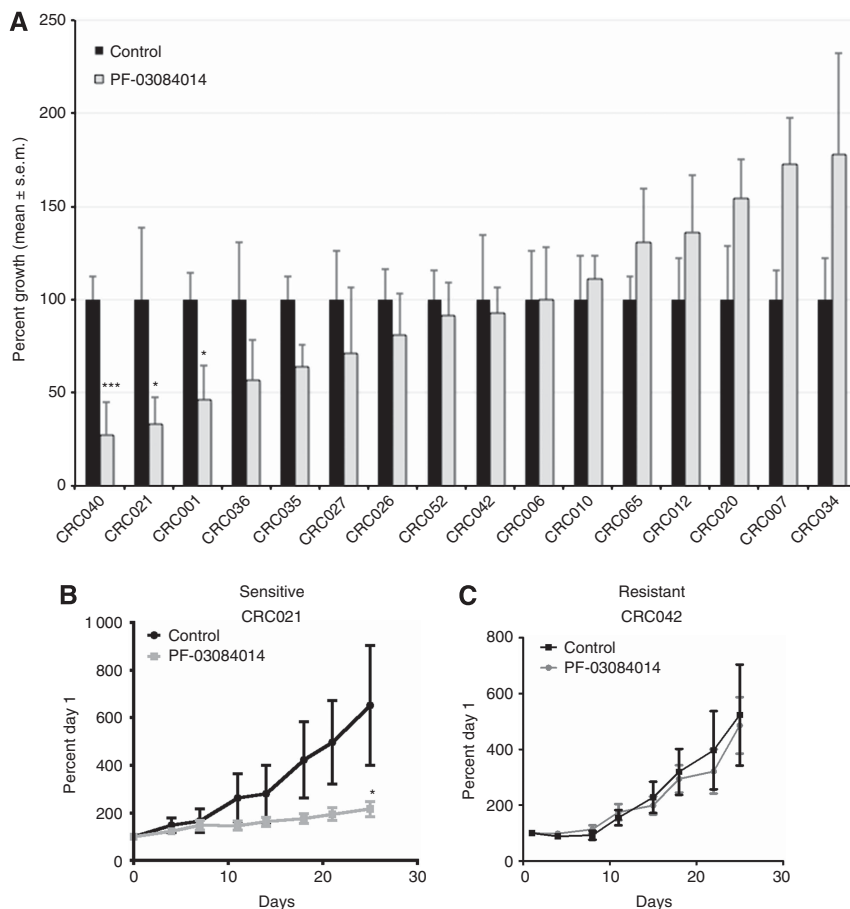
**The effects of PF-03084014 on tumour growth in a CRC patient-derived explant model.** The efficacy of PF-03084014 (a GSI) on tumour growth was evaluated on 16 CRC patient-derived xenografts. Table 1 shows the type of tumour (colon or rectal), stage of disease, previous treatments, and common mutations of

the CRC explant patients. As shown in Figure 1A, 3 out of 16 CRC explants (CRC040, CRC021, and CRC001) showed sensitivity (static effects, but no regression) to PF-03084014. A tumour growth index (TGI)  $\leq 50\%$  was considered as sensitive and TGI  $> 50\%$  as resistant. Figures 1B and C are representative graphs of a sensitive explant 021 (B) and resistant explant 042 (C). In addition to treating CRC explants *in vivo*, we also evaluated 23 CRC cell lines *in vitro*. As shown in Supplementary Figure 1, PF-03084014 had very little activity *in vitro*. The LS123 was the only cell line that showed some growth inhibitor effects to  $\gamma$ -secretase inhibition; however, the effects on proliferation never reached an IC<sub>50</sub>.

**PF-03084014 is a specific inhibitor of the Notch pathway.** To assess the specificity of PF-03084014 on Notch pathway inhibition and tumour growth, we stably transfected the HCT116 cell line with shRNA to RBPj $\kappa$ . RBPj $\kappa$  is an essential transcription factor that binds intracellular cleaved Notch in the nucleus, ultimately leading to the transcription of Notch target genes. Before injecting in mice, we evaluated the gene expression of RBPj $\kappa$  in the HCT116 cell line by RT-PCR. Gene expression of RBPj $\kappa$  was decreased by 75% before injection (Figure 2A). In addition, examination of RBPj $\kappa$  in xenograft tumours at the end of treatment showed a 76% reduction in RBPj $\kappa$  in both the RBPj $\kappa$  knockdown control and RBPj $\kappa$  knockdown treated with GSI (Figure 2B). Furthermore, knockdown of RBPj $\kappa$  resulted in a decrease in the notch pathway evidenced by a decrease in cleaved Notch1 and Hes-1 (Figure 2C). We next evaluated treatment effects of PF-03084014 on tumour growth in HCT116 scramble negative control and HCT116 RBPj $\kappa$  knockdown cell lines in an *in vivo* xenograft model. PF-03084014 treatment significantly decreased the growth of HCT116 scramble group (Figure 2D). Of note, a significant reduction in tumour growth was also seen in the HCT116 parental cell line (data not shown). In contrast, PF-03084014 did not have any additional effects on growth of the RBPj $\kappa$  knockdown group (Figure 2E). Furthermore, knockdown of RBPj $\kappa$  in the HCT116 cell line resulted in a significant decrease (*P*<0.05) in growth when

Table 1. Patient characteristics and mutational status of CRC explants

CRC explant	Primary	Stage	Age at consent	Previous treatment	KRAS	NRAS	PIK3CA	APC	CTNNB1	BRAF	TP53
CRC 001	Colon	IV	69	FOLFOX + bevacizumab	G12D	WT	WT	Mut	WT	WT	WT
CRC 006	Colon	IV	42	Capecitabine + Radiation, FOLFOX + bevacizumab, Irinotecan + cetuximab	G12D	WT	WT	Mut	WT	WT	WT
CRC 007	Colon	II	47	None	G13D	WT	WT	WT	Mut	WT	Mut
CRC 010	Rectal	III	52	None	WT	WT	WT	WT	WT	WT	Mut
CRC 012	Rectal	IV	56	Capecitabine + Oxaliplatin + bevacizumab	G12V	WT	WT	WT	WT	WT	WT
CRC 020	Colon	IV	43	FOLFOX + bevacizumab	WT	G12S, Q61K	Mut	Mut	WT	WT	WT
CRC 021	Rectal	II	72	None	G12D	WT	WT	WT	WT	WT	Mut
CRC 026	Colon	IV	48	FOLFOX and bevacizumab	WT	Q61K	WT	Mut	WT	WT	WT
CRC 027	Colon	IV	56	None	G12A	WT	WT	Mut	WT	WT	Mut
CRC 034	Colon	IV	59	None	WT	WT	WT	WT	WT	WT	WT
CRC 035	Colon	IV	44	FOLFOX	G12S	WT	WT	WT	WT	WT	WT
CRC 036	Rectal	IV	42	Capecitabine + Radiation, FOLFOX + bevacizumab, Irinotecan + cetuximab	G12A	WT	WT	Mut	WT	WT	WT
CRC 040	Rectal	II	63	None	G12V	WT	Mut	Mut	WT	WT	WT
CRC 042	Rectal	II	73	FOLFIRI + bevacizumab	G13D	WT	WT	WT	Mut	WT	Mut
CRC 052	Colon	II	51	None	G12V	WT	WT	Mut	WT	WT	WT
CRC 065	Colon	IV	66	FOLFIRI, FOLFOX	G12V	WT	WT	Mut	WT	WT	WT



**Figure 1.** PF-03084014 effects on tumour growth in CRC explants. **(A)** Sixteen CRC explants were treated with PF-03084014  $125 \text{ mg kg}^{-1}$  per day BID by oral gavage for 28 days. Tumour size was evaluated twice per week by caliper measurements using the formula: tumour volume =  $(\text{length} \times \text{width}^2) \times 0.52$ . Tumour growth index (TGI) was calculated by relative tumour growth of treated mice divided by relative tumour growth of control mice  $\times 100$ . Cases with a TGI of  $<50\%$  were considered as sensitive, and TGI of  $>50\%$  were considered as resistant to PF-03084014. Three xenografts (CRC001, CRC021, and CRC040) were sensitive to PF-03084014 (TGI  $\leq 50\%$ ) and thirteen xenografts were resistant to PF-03084014 (TGI  $>50\%$ ). Columns, mean ( $n = 8\text{--}10$  tumours per group); bars, s.e. \*, significance ( $*P < 0.05$ ), ( $***P < 0.001$ ) compared with vehicle-treated tumours. **(B)** A representative figure of a sensitive explant CRC021 and **(C)** resistant explant CRC042.

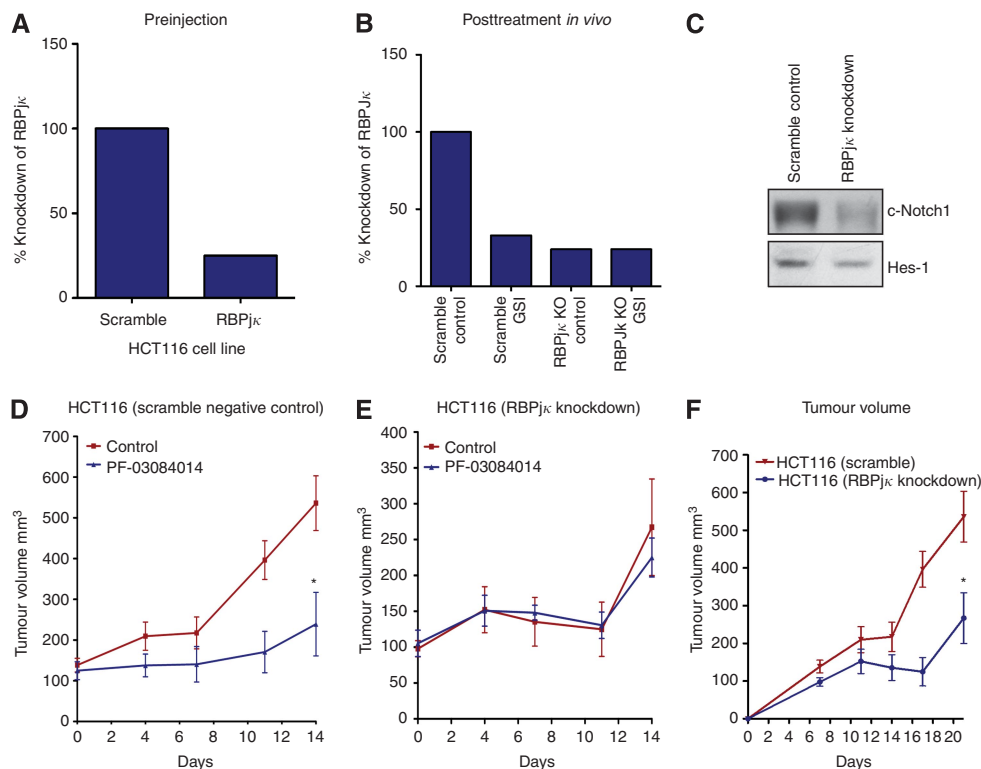
compared with the HCT116 scramble (Figure 2F). As expected, there was no difference in tumour growth between the scramble control and HCT116 control cell line (data not shown).

**The Notch pathway is upregulated in sensitive tumours and PF-03084014 treatment reduces Notch activity.** We next compared the Notch pathway between the three sensitive (CRC040, 021, and 001) and three most resistant explants (CRC020, 007, and 034) by gene array and KEGG pathway analysis to determine if tumours sensitive to PF-03084014 had elevated levels of the Notch pathway. As shown in Figure 3A, many components of the Notch pathway such as Notch receptors (Notch1, 3, and 4), the ligand JAG1 and co-activators were upregulated in the sensitive explants when compared with resistant explants. In addition, as shown in Figure 3B and C, cleaved Notch1 levels were significantly elevated in the GSI-sensitive tumours. Inhibition of  $\gamma$ -secretase with PF-03084014 reduced levels of cleaved Notch in the sensitive tumours CRC021 (D) CRC001 and CRC040 (Supplementary Figure 2), whereas no difference was seen in the CRC012-resistant explant (Figure 3E).

**PF-03084014-sensitive tumours exhibit elevations of the WNT pathway and treatment reduces Wnt signalling.** Interactions between the Notch and Wnt pathways have been described in CRC (Rodilla *et al*, 2009; Kwon *et al*, 2011). Therefore, we also examined gene expression levels of the Wnt pathway between sensitive and

resistant tumours. KEGG analysis of the Wnt pathway revealed an increase in many components of the canonical Wnt pathways in sensitive tumours when compared with resistant tumours (Figure 4A). In addition, baseline levels of active  $\beta$ -catenin were significantly elevated in the sensitive tumours CRC001, CRC021, and CRC040 when compared with resistant tumours, confirming that the Wnt pathway is elevated in sensitive tumours (Figure 4B and C). We next were interested in determining whether PF-03084014 modulated the activation of the canonical Wnt pathway. As shown in Figure 4D, PF-03084014 resulted in a significant decrease in both active- $\beta$  catenin and Axin2 (a Wnt-dependent gene) in the sensitive CRC021 explant. In contrast, no treatment effects on active  $\beta$ -catenin and Axin2 were seen in the resistant CRC012 explant (Figure 4E).

**PF-03084014 induces an increase in apoptosis by decreasing the phosphorylation of p65 and NF- $\kappa$ B-dependent transcription of BCLxL.** We investigated the effects of PF-03084014 on apoptosis in the sensitive explants CRC001 and CRC021 by gene array and western blot, respectively. As shown in Figure 5A, treatment with PF-03084014 increased the gene expression of several different apoptotic genes 3 days after treatment with PF-03084014 in CRC001. In addition, PF-03084014 treatment induced an increase in cleaved caspase 3 and PARP at 2 h and 8 days post treatment. A decrease in the phosphorylation p65 (a subunit of NF- $\kappa$ B) was



**Figure 2.** Investigation of PF-03084014 as a specific inhibitor of the Notch pathway. **(A)** Evaluation of RBPj $\kappa$  knockdown before injection and **(B)** after treatment of tumours in a xenograft model showed a 75% and 76% knockdown of RBPj $\kappa$ , respectively. **(C)** RBPj $\kappa$  knockdown reduced cleaved Notch1 activity and Hes-1 in xenograft tumours compared with scramble control. PF-03084014 treatment effects on HCT116 scramble control **(D)** and HCT116 RBPj $\kappa$  knockdown **(E)** were evaluated in an *in vivo* xenograft model. Treatment significantly decreased the growth of HCT116 parental (data not shown) and scramble groups **(D)**. In contrast, PF-03084014 did not have any additional anti-proliferative effects in the RBPj $\kappa$  knockdown group **(E)**. Knockdown of RBPj $\kappa$  significantly decreased growth of the HCT116 cell line when compared with HCT116 scramble control **(F)**. Columns, mean ( $n=8-10$  tumours per group); bars, s.e. \*, significance ( $*P<0.05$ ).

observed at 8 h, 24 h, and 8 days post PF-03084014 treatment, while BCLxL (a NF- $\kappa$ B regulated gene) was significantly decreased 8 days post treatment.

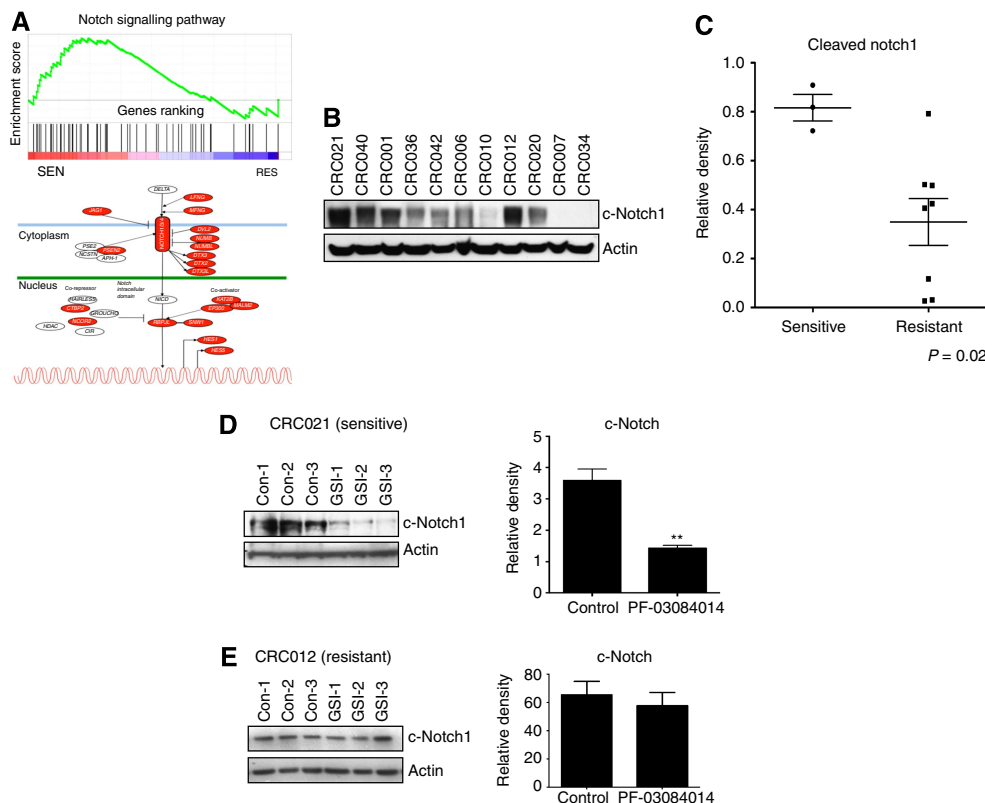
## DISCUSSION

In this study, we set out to determine the efficacy of PF-03084014, a clinical GSI, in a preclinical patient-derived CRC explant model. Herein, we show that inhibition of Notch signalling is effective only in a small subset of patient tumours. Of note, the effects of PF-03084014 on proliferation on 23 CRC cell lines *in vitro* were minimal, suggesting that the tumour microenvironment (stroma/angiogenesis) *in vivo* may be essential to see anti-proliferative effects. These results are consistent with a study by Zhang *et al* (2012) showing a lack of *in vitro* activity with this compound in 33 of 35 breast cancer cell lines. In our CRC explant model, three (CRC001, CRC021, and CRC040) out of sixteen tumours (~19%) responded to  $\gamma$ -secretase inhibition. We examined whether a common mutation seen in CRC was associated with sensitivity to GSI; however, no association between mutational status (KRAS, PIK3CA, APC, CTNNB1, BRAF, or p53) and sensitivity to PF-03084014 was identified. A study by Fischer *et al* (2011) showed anti-tumour effects in a preclinical early passage CRC xenograft model using a DLL-4 antibody. In particular, they found a significant reduction in tumour growth in four out of six DLL-4-treated xenografts. Together, this shows that dysregulation of the Notch pathway has a role in tumorigenesis in a subset of CRC tumours.

RBPj $\kappa$  is an essential transcription factor involved in the activation of the Notch pathway (Nam *et al*, 2006; Friedmann *et al*,

2008; Kopan and Ilagan, 2009). Similarly to treatment with a GSI, genetic manipulation of RBPj $\kappa$  also resulted in the conversion of proliferative cells into post mitotic cells in an APC $-/-$  mouse model (van Es *et al*, 2005). Since RBPj $\kappa$  is directly involved in Notch-dependent activation, we stably transfected shRNA to knockdown RBPj $\kappa$  in the HCT116 cell line to examine the specificity of PF-03084014 on the Notch pathway in a xenograft model. We demonstrated that treatment with PF-03084014 had similar anti-tumour activity on the HCT116 parental and scramble groups when compared with the RBPj $\kappa$  untreated group. In addition, treatment of the HCT116 RBPj $\kappa$  group did not provide any additional anti-tumour effects. These results imply that growth of the HCT116 cell line is partially dependent on the Notch pathway and PF-03084014 specifically targets the Notch pathway. We cannot rule out, however, that inhibition of other  $\gamma$ -secretase targets, such as CD44, EpCAM, and ADAM10 (Kopan and Ilagan, 2004; Maetzel *et al*, 2009; Tousseyn *et al*, 2009) may have contributed to anti-tumour activity independent of Notch in the CRC explants.

Since we identified differences in sensitivity to PF-03084014 in our CRC explant model, we investigated whether the Notch pathway is upregulated in tumours that responded to treatment compared with resistant tumours. Recently, in a breast cancer preclinical model, PF-03084014 had significant anti-tumour activity (>50% of tumours responded to treatment) in tumours that exhibited significant increases in Notch target genes (Zhang *et al*, 2012). Utilising baseline gene array, we profiled the Notch pathway by KEGG and observed that sensitive tumours had elevated levels of many components of the Notch pathway when compared with resistant tumours. In addition, we demonstrated that activated cleaved Notch1 levels were significantly increased in



**Figure 3.** Notch pathway analysis between sensitive (CRC040, 021, and 001) vs resistant tumours (CRC020, 007, and 034). **(A)** KEGG pathway analysis of the Notch pathway shows an increase in many components of the Notch pathway in sensitive tumours when compared with resistant tumours. Red indicates elevated gene expression. **(B)** Baseline levels of cleaved Notch1 are elevated in sensitive tumours compared with resistant tumours. **(C)** Densitometry of cleaved Notch1/Actin ratio showed a significant increase in sensitive tumours compared with resistant tumours ( $P < 0.02$ ). **(D)** PF-03084014 treatment decreased cleaved Notch activity in the sensitive tumour CRC021 ( $n = 3$  mice/tumour per group for control and GSI treated). Examination of cleaved Notch by densitometry showed a significant ( $*P < 0.05$ ) decrease with PF-03084014 treatment. **(E)** No treatment effects were observed in the resistant tumour CRC012.

sensitive tumours, confirming the gene array analysis. We also showed that PF-03084014 decreases the Notch pathway in the sensitive tumour CRC021 as evidenced by a significant reduction in cleaved Notch activity. These results suggest that dysregulation of the Notch pathway may be important in driving tumour growth in PF-03084014-sensitive tumours. Since, there are many components of the Notch pathway and we used a GSI in this study, it remains unknown whether a particular Notch receptor (1, 2, 3, or 4) or ligand (DLL1, DLL3, DLL4, JAG-1, or JAG-2) or a combination of them are culpable in driving tumour growth in the sensitive explants. For instance, the Notch1 receptor has been identified to be associated with poorly differentiated tumours and worse survival in CRC (Chu *et al*, 2010; Zhang *et al*, 2010). In addition, DLL4 has been described to modulate endothelial sprout and angiogenesis in CRC (Noguera-Troise *et al*, 2006). It is likely that newer therapeutics targeting the individual receptors and/or ligands will provide more insight into the important Notch receptors or ligands involved in CRC tumorigenesis.

The Wnt and Notch pathways have crucial roles in proliferation and maintenance of stem cells in the gut (van Es and Clevers, 2005). Inactivating mutations in APC and activating mutations in  $\beta$ -catenin occur in  $\sim 80\%$  and  $5\%$ , respectively, of CRC patients and have been identified to be key factors involved in the development of CRC (van Es and Clevers, 2005). Cross-talk between the Notch and Wnt signalling pathways has been described in CRC. In particular, binding of the Notch receptor to  $\beta$ -catenin has been shown to inhibit Wnt-dependent activity (Kwon *et al*, 2011). In addition, the Notch ligand JAG-1 is

transcriptionally activated by  $\beta$ -catenin and a conditional knockout of JAG1 in an APC  $-/-$  mouse model resulted in a reduction in the development of intestinal tumours (Rodilla *et al*, 2009). Therefore, we first examined baseline differences between PF-03084014-sensitive tumours and resistant tumours in the Wnt pathway by gene array and KEGG pathway analysis. Similarly to the Notch pathway, we show that many components of the canonical Wnt pathway were increased in sensitive tumours compared with resistant tumours. No association between APC or  $\beta$ -catenin mutational status and sensitivity was observed. Analysis of active  $\beta$ -catenin by western blot confirmed that the Wnt pathway was significantly elevated in sensitive tumours. Furthermore, we demonstrated that PF-03084014 resulted in a significant reduction in levels of Axin2 and active  $\beta$ -catenin in the sensitive CRC021 explant. These findings suggest that PF-03084014 inhibits the Notch and Wnt pathways in sensitive tumours with elevated levels of Notch and Wnt, resulting in a reduction in tumour growth in our CRC explant model. However, more studies are needed to define the mechanism whereby Notch and Wnt interact.

Treatment with PF-03084014 reduced tumour growth in the sensitive explants by inducing apoptosis. We observed an increase in cleaved caspase 3 and PARP as early as 2 h post treatment as well as a decrease in the phosphorylation of p65, an NF- $\kappa$ B subunit that regulates genes that are important for cell survival. Since cleaved Notch levels were not decreased at 2 h post PF-03084014 treatment may suggest that off target effects were responsible for cleavage of caspase 3 and PARP. However, we demonstrate a significant decrease in cleaved Notch1 as well as in the

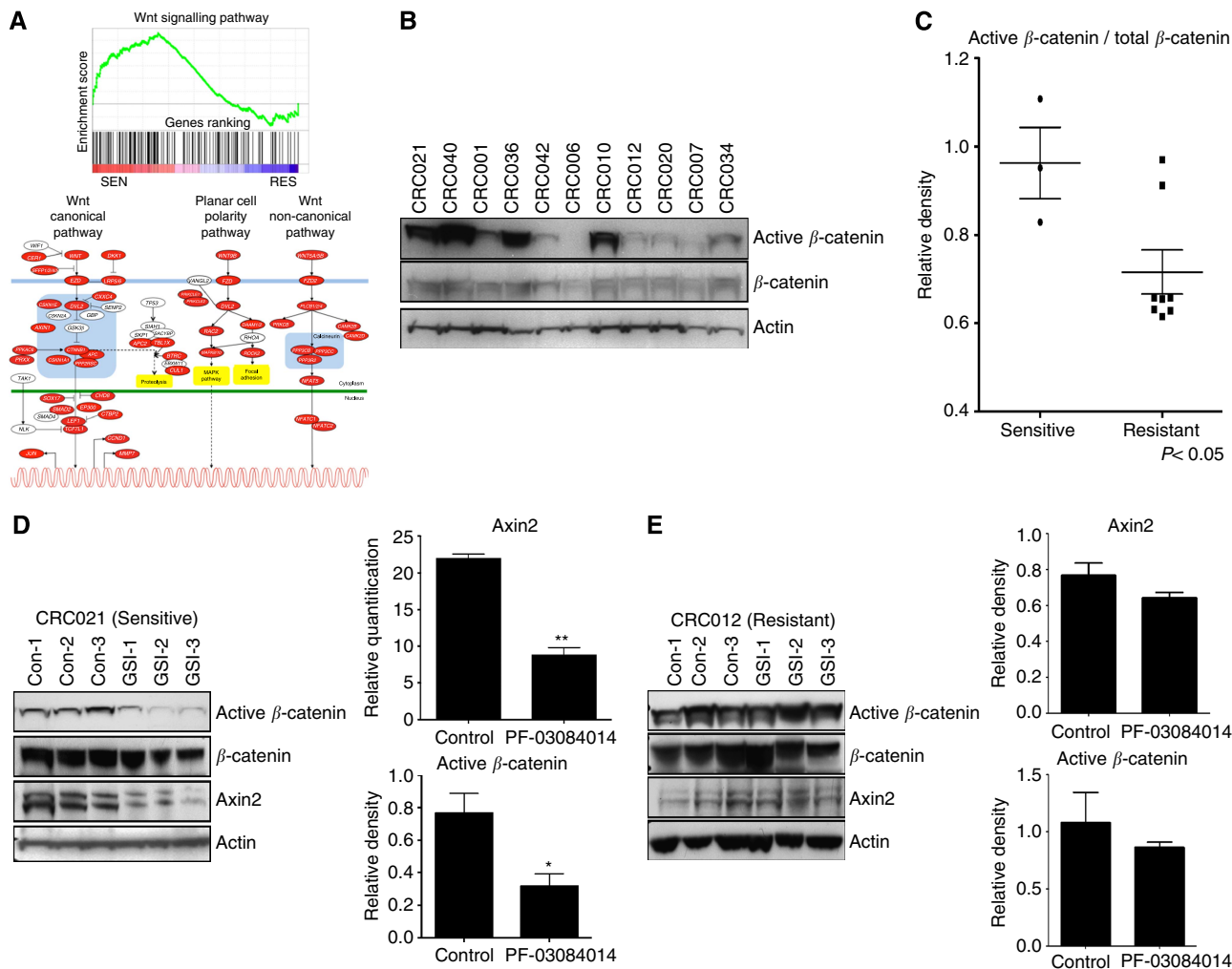


Figure 4. Wnt pathway analysis between sensitive vs resistant tumours. (A) KEGG pathway analysis of the Wnt pathway shows an increase in many components of the canonical Wnt pathway in sensitive tumours when compared with resistant tumours. Red indicates elevated gene expression. (B) Baseline levels of active  $\beta$ -catenin are elevated in sensitive tumours compared with resistant tumours. (C) Densitometry of active  $\beta$ -catenin/ $\beta$ -catenin ratio showed a significant increase in sensitive tumours compared with resistant tumours ( $P < 0.05$ ). (D) PF-03084014 treatment decreased active  $\beta$ -catenin and Axin2 levels in the sensitive tumour CRC021. (E) No treatment effects were observed in the resistant tumour CRC012.

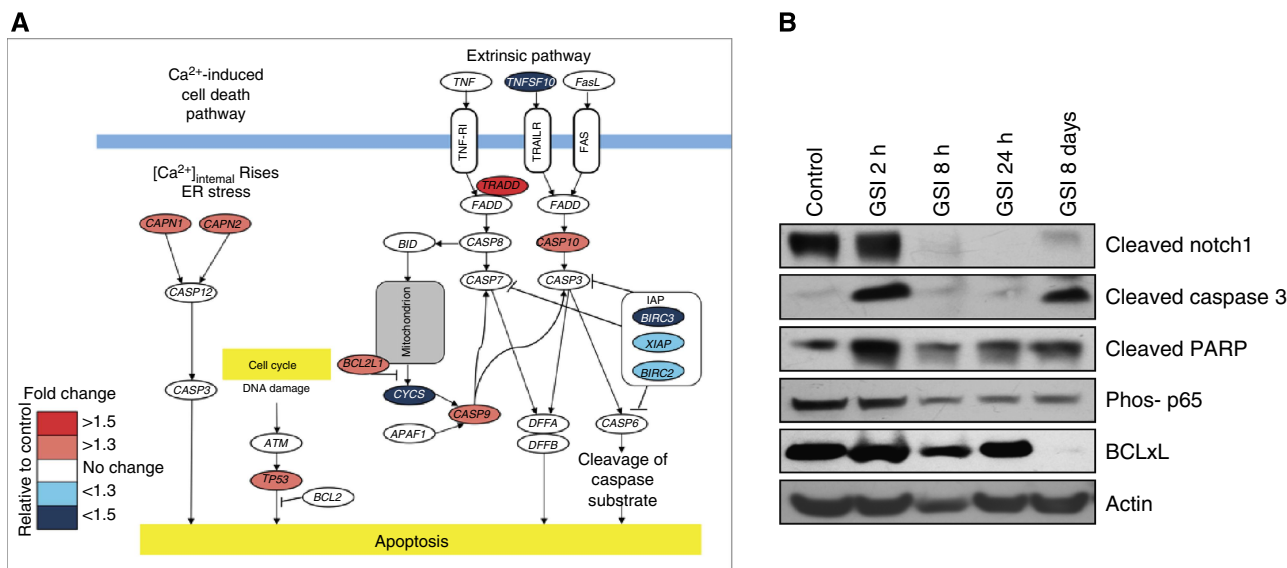


Figure 5. Assessment of PF-03084014 on apoptosis. (A) Post gene array 3 days after PF-03084014 treatment on gene expression of apoptotic genes in CRC001-sensitive explant. (B) Western blot analysis of cleaved Notch1, cleaved caspase 3, cleaved PARP, phos p65, and BCLxL in CRC021 2h, 8h, 24h and 8 days after treatment with PF-03084014.

phosphorylation of p65 and the NF- $\kappa$ B-dependent anti-apoptotic protein BCLxL at 8h, 24h and 8 days post treatment. This indicates that an induction of apoptosis by inhibiting the NF- $\kappa$ B pathway may be in part responsible for the anti-tumour effects observed in the PF-03084014-sensitive tumours.

In summary, our results provide insight into the role of the Notch pathway in CRC. PF-03084014 only had activity against a subset of tumours that exhibited elevated levels of the Notch and Wnt pathways and treatment reduced the activity of both pathways. These findings have potential for the treatment of patients with CRC. Patients with elevated levels of Notch and Wnt pathway may derive benefit from treatment with the Notch inhibitor PF-03084014. A phase I clinical trial of PF-03084014 is ongoing and the data readout should inform on patient selection and future development of the compound for CRC. Although this compound is distinct from others in the class by having linear pharmacokinetic (PK) properties and minimal gastrointestinal (GI) toxicity, further development will be facilitated by the identification of a robust biomarker.

## ACKNOWLEDGEMENTS

This work was supported by a Pfizer IIR grant.

## CONFLICT OF INTEREST

The authors declare no conflict of interest.

## REFERENCES

- Chu D, Li Y, Wang W, Zhao Q, Li J, Lu Y, Li M, Dong G, Zhang H, Xie H, Ji G (2010) High level of Notch1 protein is associated with poor overall survival in colorectal cancer. *Ann Surg Oncol* **17**(5): 1337–1342.
- Dangles-Marie V, Pocard M, Richon S, Weiswald LB, Assayag F, Saulnier P, Judde JG, Janneau JL, Auger N, Validire P, Dutrillaux B, Praz F, Bellet D, Poupon MF (2007) Establishment of human colon cancer cell lines from fresh tumors versus xenografts: comparison of success rate and cell line features. *Cancer Res* **67**(1): 398–407.
- Fischer M, Yen WC, Kapoun AM, Wang M, O'Young G, Lewicki J, Gurney A, Hoey T (2011) Anti-DLL4 inhibits growth and reduces tumor-initiating cell frequency in colorectal tumors with oncogenic KRAS mutations. *Cancer Res* **71**(5): 1520–1525.
- Fre S, Huyghe M, Mourikis P, Robine S, Louvard D, Artavanis-Tsakonas S (2005) Notch signals control the fate of immature progenitor cells in the intestine. *Nature* **435**(7044): 964–968.
- Friedmann DR, Wilson JJ, Kovall RA (2008) RAM-induced allostery facilitates assembly of a notch pathway active transcription complex. *J Biol Chem* **283**(21): 14781–14791.
- Kanehisa M, Araki M, Goto S, Hattori M, Hirakawa M, Itoh M, Katayama T, Kawashima S, Okuda S, Tokimatsu T, Yamanishi Y (2008) KEGG for linking genomes to life and the environment. *Nucleic Acids Res* **36**(Database issue): D480–D484.
- Kopan R, Ilagan MX (2004) Gamma-secretase: proteasome of the membrane? *Nat Rev Mol Cell Biol* **5**(6): 499–504.
- Kopan R, Ilagan MX (2009) The canonical Notch signaling pathway: unfolding the activation mechanism. *Cell* **137**(2): 216–233.
- Kwon C, Cheng P, King IN, Andersen P, Shenje L, Nigam V, Srivastava D (2011) Notch post-translationally regulates beta-catenin protein in stem and progenitor cells. *Nat Cell Biol* **13**(10): 1244–1251.
- Maetzel D, Denzel S, Mack B, Canis M, Went P, Benk M, Kieu C, Papier P, Baeuerle PA, Munz M, Gires O (2009) Nuclear signalling by tumour-associated antigen EpCAM. *Nat Cell Biol* **11**(2): 162–171.
- Messersmith WA, LoRusso P, Cleary JM, Dasari A, Zhang X, Shaik N, Courtney RD, Randolph S, Shapiro G (2011) A phase I dose-escalation study of the novel gamma secretase inhibitor PF-03084014 in patients (pts) with advanced solid tumors. *J Clin Oncol* **29**(suppl): Please provide page range for reference 'Messersmith et al (2011)'. abstr 3100.
- Nair P, Somasundaram K, Krishna S (2003) Activated Notch1 inhibits p53-induced apoptosis and sustains transformation by human papillomavirus type 16 E6 and E7 oncogenes through a PI3K-PKB/Akt-dependent pathway. *J Virol* **77**(12): 7106–7112.
- Nam Y, Sliz P, Song L, Aster JC, Blacklow SC (2006) Structural basis for cooperativity in recruitment of MAML coactivators to Notch transcription complexes. *Cell* **124**(5): 973–983.
- Noguera-Troise I, Daly C, Papadopoulos NJ, Coetzee S, Boland P, Gale NW, Lin HC, Yancopoulos GD, Thurston G (2006) Blockade of Dll4 inhibits tumour growth by promoting non-productive angiogenesis. *Nature* **444**(7122): 1032–1037.
- Osipo C, Golde TE, Osborne BA, Miele LA (2008) Off the beaten pathway: the complex cross talk between Notch and NF-kappaB. *Lab Invest* **88**(1): 11–17.
- Pannuti A, Foreman K, Rizzo P, Osipo C, Golde T, Osborne B, Miele L (2010) Targeting Notch to target cancer stem cells. *Clin Cancer Res* **16**(12): 3141–3152.
- Radtke F, Clevers H, Riccio O (2006) From gut homeostasis to cancer. *Curr Mol Med* **6**(3): 275–289.
- Rodilla V, Villanueva A, Obrador-Hevia A, Robert-Moreno A, Fernandez-Majada V, Grilli A, Lopez-Bigas N, Bellora N, Alba MM, Torres F, Dunach M, Sanjuan X, Gonzalez S, Gridley T, Capella G, Bigas A, Espinosa L (2009) Jagged1 is the pathological link between Wnt and Notch pathways in colorectal cancer. *Proc Natl Acad Sci USA* **106**(15): 6315–6320.
- Ronchini C, Capobianco AJ (2001) Induction of cyclin D1 transcription and CDK2 activity by Notch(ic): implication for cell cycle disruption in transformation by Notch(ic). *Mol Cell Biol* **21**(17): 5925–5934.
- Rubio-Viqueira B, Jimeno A, Cusatis G, Zhang X, Iacobuzio-Donahue C, Karikari C, Shi C, Danenberg K, Danenberg PV, Kuramochi H, Tanaka K, Singh S, Salimi-Moosavi H, Bouraoud N, Amador ML, Altiock S, Kulesza P, Yeo C, Messersmith W, Eshleman J, Hruban RH, Maitra A, Hidalgo M (2006) An in vivo platform for translational drug development in pancreatic cancer. *Clin Cancer Res* **12**(15): 4652–4661.
- Sade H, Krishna S, Sarin A (2004) The anti-apoptotic effect of Notch-1 requires p56lck-dependent, Akt/PKB-mediated signaling in T cells. *J Biol Chem* **279**(4): 2937–2944.
- Siegel R, Desantis C, Virgo K, Stein K, Mariotto A, Smith T, Cooper D, Gansler T, Lerro C, Fedewa S, Lin C, Leach C, Cannady RS, Cho H, Scoppa S, Hachey M, Kirch R, Jemal A, Ward E (2012) Cancer treatment and survivorship statistics, 2012. *CA Cancer J Clin* **62**(4): 220–241.
- Sikandar SS, Pate KT, Anderson S, Dizon D, Edwards RA, Waterman ML, Lipkin SM (2010) NOTCH signaling is required for formation and self-renewal of tumor-initiating cells and for repression of secretory cell differentiation in colon cancer. *Cancer Res* **70**(4): 1469–1478.
- Sonoshita M, Aoki M, Fuwa H, Aoki K, Hosogi H, Sakai Y, Hashida H, Takabayashi A, Sasaki M, Robine S, Itoh K, Yoshioka K, Kakizaki F, Kitamura T, Oshima M, Taketo MM (2011) Suppression of colon cancer metastasis by Aes through inhibition of Notch signaling. *Cancer Cell* **19**(1): 125–137.
- Subramanian A, Tamayo P, Mootha VK, Mukherjee S, Ebert BL, Gillette MA, Paulovich A, Pomeroy SL, Golub TR, Lander ES, Mesirov JP (2005) Gene set enrichment analysis: a knowledge-based approach for interpreting genome-wide expression profiles. *Proc Natl Acad Sci USA* **102**(43): 15545–15550.
- Toussey T, Thathiah A, Jorissen E, Raemaekers T, Konietzko U, Reiss K, Maes E, Snellinx A, Serneels L, Nyabi O, Annaert W, Saftig P, Hartmann D, De Strooper B (2009) ADAM10, the rate-limiting protease of regulated intramembrane proteolysis of Notch and other proteins, is processed by ADAMS-9, ADAMS-15, and the gamma-secretase. *J Biol Chem* **284**(17): 11738–11747.
- van Es JH, Clevers H (2005) Notch and Wnt inhibitors as potential new drugs for intestinal neoplastic disease. *Trends Mol Med* **11**(11): 496–502.
- van Es JH, van Gijn ME, Riccio O, van den Born M, Vooijs M, Begthel H, Cozijnsen M, Robine S, Winton DJ, Radtke F, Clevers H (2005) Notch/gamma-secretase inhibition turns proliferative cells in intestinal crypts and adenomas into goblet cells. *Nature* **435**(7044): 959–963.
- Wei P, Walls M, Qiu M, Ding R, Denlinger RH, Wong A, Tsaparikos K, Jani JP, Hosea N, Sands M, Randolph S, Smeal T (2010) Evaluation of



- selective gamma-secretase inhibitor PF-03084014 for its antitumor efficacy and gastrointestinal safety to guide optimal clinical trial design. *Mol Cancer Ther* **9**(6): 1618–1628.
- Zhang CC, Pavlicek A, Zhang Q, Lira ME, Painter CL, Yan Z, Zheng X, Lee N, Ozeck M, Qiu M, Zong Q, Lappin P, Wong A, Rejto PA, Smeal T, Christensen JG (2012) Biomarker and pharmacological evaluation of the gamma-secretase inhibitor PF-03084014 in breast cancer models. *Clin Cancer Res* **18**(18): 5008–5019.
- Zhang Y, Li B, Ji ZZ, Zheng PS (2010) Notch1 regulates the growth of human colon cancers. *Cancer* **116**(22): 5207–5218.

This work is published under the standard license to publish agreement. After 12 months the work will become freely available and the license terms will switch to a Creative Commons Attribution-NonCommercial-Share Alike 3.0 Unported License.

Supplementary Information accompanies this paper on British Journal of Cancer website (<http://www.nature.com/bjc>)