



# The Role of Mitochondrial Impairment and Oxidative Stress in the Pathogenesis of Lithium-Induced Reproductive Toxicity in Male Mice

## OPEN ACCESS

### Edited by:

Wei Cui,

University of Massachusetts Amherst,  
United States

### Reviewed by:

Deqiang Miao,

Washington State University,  
United States

Caroline Gomes Lucas,

University of Missouri, United States

María Gracia Gervasi,

University of Massachusetts Amherst,  
United States

### \*Correspondence:

Mohammad Mehdi Ommati

mehdi.ommati@gmail.com;

mehdi\_ommati@sums.ac.ir;

orcid.org/0000-0003-0514-2414

Reza Heidari

rezaheidari@hotmail.com;

reidari@sums.ac.ir;

orcid.org/0000-0002-7038-9838

†These authors have contributed  
equally to this work

### Specialty section:

This article was submitted to

Animal Reproduction -

Theriogenology,

a section of the journal

Frontiers in Veterinary Science

**Received:** 06 September 2020

**Accepted:** 29 January 2021

**Published:** 24 March 2021

### Citation:

Ommati MM, Arabnezhad MR,

Farshad O, Jamshidzadeh A,

Niknahad H, Retana-Marquez S, Jia Z,

Nateghahmadi MH, Mousavi K,

Arazi A, Azmoon MR, Azarpira N and

Heidari R (2021) The Role of

Mitochondrial Impairment and

Oxidative Stress in the Pathogenesis

of Lithium-Induced Reproductive

Toxicity in Male Mice.

Front. Vet. Sci. 8:603262.

doi: 10.3389/fvets.2021.603262

**Mohammad Mehdi Ommati<sup>1†</sup>, Mohammad Reza Arabnezhad<sup>2†</sup>, Omid Farshad<sup>3</sup>, Akram Jamshidzadeh<sup>3,4</sup>, Hossein Niknahad<sup>3,4</sup>, Socorro Retana-Marquez<sup>5</sup>, Zhipeng Jia<sup>6</sup>, Mohammad Hassan Nateghahmadi<sup>6</sup>, Khadijeh Mousavi<sup>4</sup>, Aysooda Arazi<sup>4</sup>, Mohammad Reza Azmoon<sup>3,4</sup>, Negar Azarpira<sup>7</sup> and Reza Heidari<sup>3\*</sup>**

<sup>1</sup> Department of Bioinformatics, College of Life Sciences, Shanxi Agricultural University, Taigu, China, <sup>2</sup> Department of Toxicology and Pharmacology, School of Pharmacy, Kerman University of Medical Sciences, Kerman, Iran, <sup>3</sup> Pharmaceutical Sciences Research Center, Shiraz University of Medical Sciences, Shiraz, Iran, <sup>4</sup> Department of Toxicology and Pharmacology, School of Pharmacy, Shiraz University of Medical Sciences, Shiraz, Iran, <sup>5</sup> Department of Biology and Reproduction, Autonomous Metropolitan University, Mexico City, Mexico, <sup>6</sup> College of Animal Science and Veterinary Medicine, Shanxi Agricultural University, Taigu, China, <sup>7</sup> Transplant Research Center, Shiraz University of Medical Sciences, Shiraz, Iran

Lithium (Li<sup>+</sup>) is prescribed against a wide range of neurological disorders. Besides its excellent therapeutic properties, there are several adverse effects associated with Li<sup>+</sup>. The impact of Li<sup>+</sup> on renal function and diabetes insipidus is the most common adverse effect of this drug. On the other hand, infertility and decreased libido is another complication associated with Li<sup>+</sup>. It has been found that sperm indices of functionality, as well as libido, is significantly reduced in Li<sup>+</sup>-treated men. These adverse effects might lead to drug non-compliance and the cessation of drug therapy. Hence, the main aims of the current study were to illustrate the mechanisms of adverse effects of Li<sup>+</sup> on the testis tissue, spermatogenesis process, and hormonal changes in two experimental models. In the *in vitro* experiments, Leydig cells (LCs) were isolated from healthy mice, cultured, and exposed to increasing concentrations of Li<sup>+</sup> (0, 10, 50, and 100 ppm). In the *in vivo* section of the current study, mice were treated with Li<sup>+</sup> (0, 10, 50, and 100 ppm, in drinking water) for five consecutive weeks. Testis and sperm samples were collected and assessed. A significant sign of cytotoxicity (LDH release and MTT assay), along with disrupted testosterone biosynthesis, impaired mitochondrial indices (ATP level and mitochondrial depolarization), and increased biomarkers of oxidative stress were detected in LCs exposed to Li<sup>+</sup>. On the other hand, a significant increase in serum and testis Li<sup>+</sup> levels were detected in drug-treated mice. Moreover, ROS formation, LPO, protein carbonylation, and increased oxidized glutathione (GSSG) were detected in both testis tissue and sperm specimens of Li<sup>+</sup>-treated mice. Several sperm anomalies were also detected in Li<sup>+</sup>-treated animals. On the other hand, sperm mitochondrial indices (mitochondrial dehydrogenases activity and ATP levels) were significantly decreased in drug-treated groups where mitochondrial depolarization was increased dose-dependently. Altogether, these data mention oxidative stress and mitochondrial impairment as pivotal mechanisms involved

in  $\text{Li}^+$ -induced reproductive toxicity. Therefore, based on our previous publications in this area, therapeutic options, including compounds with high antioxidant properties that target these points might find a clinical value in ameliorating  $\text{Li}^+$ -induced adverse effects on the male reproductive system.

**Keywords:** antipsychotic drugs, bipolar disease, energy crisis, heavy metals, infertility, sperm

## INTRODUCTION

Lithium ( $\text{Li}^+$ ) is used for the management of a wide range of neurological diseases (1). On the other hand, humans are also exposed to  $\text{Li}^+$  through different routes such as drinking water, foods, or environmental exposure (e.g., in miners or  $\text{Li}^+$ -battery manufacturers) (2, 3). Nielsen (1998) has calculated that the dietary needs of  $\text{Li}^+$  are generally  $< 0.05$  mg/kg of feed/day for laboratory animals (4). In humans, Schrauzer (2002) has reported that 0.5–3 mg of  $\text{Li}^+$ /day are needed (5). On the other hand, Aral and Vecchio-Sadus (2008) have reviewed that up to 10 mg/L of  $\text{Li}^+$  in serum is recommended to bipolar patients (2). They have also shown that the higher doses (10, 15, and 20 mg/L in blood) cause a moderate poisoning (10 mg/L), slurred speech and confusion (15 mg/L), and high fatality rate (20 mg/L) (2).

Even though many investigations reported that low levels of  $\text{Li}^+$  are precious in mitigating signs of bipolar disorders and depression (6–8) found that prolonged exposure to therapeutic doses of  $\text{Li}^+$  triggers complications among hospitalized patients (8). Hence, toxicity in the renal system (9–11), nervous system (12), thyroid glands (goiter) (13), and dermatological-related complications (14, 15), as well as circulatory system (16) under  $\text{Li}^+$  exposure have been earlier reported. On the other hand, it has been shown that this light metal can pass across the placental barriers and then induce teratogenic effects (17, 18). Besides the above-mentioned alterations, sterility is a well-described adverse phenomenon in  $\text{Li}^+$ -treated groups.

Several cases of reproductive abnormalities have been reported in association with  $\text{Li}^+$  administration (16, 19–21). The first reproductive studies indicated that exposure to  $\text{Li}^+$  could trigger sexual anomalies in men (22, 23). In rats,  $\text{Li}^+$  induced a considerable decrement in steroidogenesis-related essential genes expression and then steroidogenesis and spermatogenesis impairment (24, 25); whereas, its deficiency can also mitigate the mammalian reproductive performance. In a prolonged exposure investigation, subfertility induced by reproductive toxicity was observed in male rats exposed orally to  $\text{Li}^+$  (26). Halder et al. (27) have also highlighted the pivotal roles of  $\text{Li}^+$  on the fine-tuning regulation of maturation in epididymal spermatozoa (27).  $\text{Li}^+$  chloride-challenged birds also showed significant degenerative alterations in germ cells and the epithelium of seminiferous tubules (28, 29). Acute exposure of albino rats to various doses of  $\text{Li}^+$  (200 and 400  $\mu\text{g}/100$  g body live weight; for 3 weeks) could cause a considerable decrement in the spermatogenesis, and the serum concentrations of prolactin, testosterone (T), luteinizing hormone (LH), and follicle-stimulating hormone (FSH), along with remarkable mitigation in the activities of steroidogenesis-related genes ( $3\beta$ -HSD and  $17\beta$ -HSD); none of the above indices

were influenced with a low dose (100  $\mu\text{g}/100$  g body live weight) of  $\text{Li}^+$  (30).

Oxidative stress (OS) and its associated adverse events are the most prevalent mechanisms for xenobiotics-induced adverse effects (31–33). The role of OS in the mechanism of metals-induced cytotoxicity has been widely investigated (34–36). There are several lines of evidence mentioning the role of OS in the pathogenesis of  $\text{Li}^+$ -induced adverse effects in the testis tissue and semen in both experimental models and human cases (19, 20). For instance, many anomalies in the functionality of spermatozoa are attributed to the increased level of ROS in testis and semen (37–40) through severe impairments of DNA, interruption of plasma membrane integrity, and denaturation of proteins (41–43). However, there is no precise source for reactive oxygen species (ROS) and the induction of OS in the reproductive system of  $\text{Li}^+$ -treated patients.

It has been found that mitochondria could be a critical target for  $\text{Li}^+$  adverse effects in biological systems (21, 44, 45).  $\text{Li}^+$  can adversely affect mitochondrial function in other tissues such as the liver, heart, and kidney (21, 44, 45). The effects of  $\text{Li}^+$  on the reproductive system through sperm mitochondria and consequent intracellular events, in two experimental models, has not been evaluated so far. Therefore, uncovering the mechanisms of  $\text{Li}^+$  adverse effects in the reproductive system could lead to the development of therapeutic strategies against xenobiotics-induced reproductive toxicity. Hence, the purpose of the current study was to uncover the intracellular events involved in  $\text{Li}^+$ -induced male reprotoxicity through two different models (*in-vivo* and *in-vitro*).

In the current investigation, two experimental models were used. In the *in vitro* study, Leydig cells (LCs) were isolated from healthy mice, cultured, and exposed to increasing concentrations of  $\text{Li}^+$  (0, 5, 10, 50, and 100 ppm). In the *in vivo* experiments, male mice were treated with  $\text{Li}^+$  (10, 50, and 100 ppm, in drinking water) for 35 consecutive days. Serum, sperm, and testis tissue specimens were collected. Several indices, including biomarkers of OS, and mitochondrial functionality indices, as well as sperm parameters under various doses of  $\text{Li}^+$ , were monitored.

## MATERIALS AND METHODS

### Chemicals

2',7'-Dichlorofluorescein diacetate (DCFH-DA), 3-[4,5dimethylthiazol-2-yl]-2,5-diphenyltetrazolium bromide (MTT), 4,2-Hydroxyethyl,1-piperazineethanesulfonic acid (HEPES), oxidized glutathione, dinitro fluoro benzene, bovine

serum albumin, lithium chloride ( $\text{Li}^+$ ), 3-(N-morpholino) propane sulfonic acid (MOPS), ethylene glycol-bis (2-aminoethyl ether)-N, N, N', N'-tetraacetic acid (EGTA), dimethyl sulfoxide, iodo-acetic acid, nigrosine, glutathione (GSH), malondialdehyde, potassium chloride, eosine, thiobarbituric acid, coomassie brilliant blue, sucrose, sodium chloride, dithiothreitol, rhodamine 123, and ethylenediaminetetraacetic acid (EDTA) were purchased from Sigma Chemical Co. (St. Louis, MO, USA). Trichloroacetic acid (TCA) and hydroxymethyl aminomethane hydrochloride (Tris-HCl) were purchased from Merck (Darmstadt, Germany).

## Experimental Setup

Thirty mature male Balb/c mice (25–30 g) were purchased from the Animal House of Shiraz Medical University, Shiraz, Iran. Controlled conditions (12:12 h, photoschedule; 18–22°C; appropriate ventilation, and 40% relative humidity) were set for experimental units. Animals had access to a commercial rodent pellet (RoyanFeed®, Esfahan, Iran) and tap water *Ad libitum*. All animal procedures were performed according to the guidelines of the ethics committee of Shiraz University of Medical Sciences, Shiraz, Iran (#97-01-36-16776). Mice were allotted to four trial *in-vivo* groups ( $n = 6$  in each), as follow: (A) Control (vehicle-treated, 0 ppm lithium chloride in drinking water); (B)  $\text{Li}^+$  (10 ppm in drinking water); (C)  $\text{Li}^+$  (50 ppm in drinking water); (D)  $\text{Li}^+$  (100 ppm in drinking water). Lithium chloride was treated daily for 35 consecutive days (*in-vivo*) and 48 h (*in-vitro*). After the trial exposure time, animals were anesthetized (thiopental 80 mg/kg, i.p.), and samples were collected. A wide range of  $\text{Li}^+$  concentrations were used in the current study (10–100 ppm). These concentrations are closed to plasma level of these drugs in patients (e.g., bipolar patients) (46). The toxicity of  $\text{Li}^+$  in animal models is also in the range of  $\text{Li}^+$  concentrations used in the current study (47, 48).

According to the procedure described in previous studies (49, 50), Leydig cells (LCs) were isolated from dissected testes. Afterward, the isolated LCs were added to 24-well ( $2 \times 10^5$  cells/mL/well) plates containing Ham's F12/DMEM culture medium supplemented with 10% FBS and 1% mylicin. All *in-vitro* culture methods took place in a 37°C controlled humidified conditions (5%  $\text{CO}_2$  in the air). The isolated cells were incubated for 2 days. Then, cells were washed twice with a serum-free medium. Afterward, the washed LCs were challenged with different doses of Li, similar to that exposed to *in-vivo* study (0, 10, 50, and 100 ppm) for 48 h.

## Sample Collection, LCs Isolation, and Evaluation

Animals were deeply anesthetized with thiopental (80 mg/kg, i.p.). The epididymides and testes were excised and weighed. The left testes were kept in a buffered formalin solution (10% formalin in phosphate buffer, pH = 7.4) for histopathological assessments. Total antioxidant capacity, lipid peroxidation, reactive oxygen species (ROS) production, protein carbonylation, and glutathione contents were determined in the right testes, spermatozoa, and LCs. Sperm sample was collected from the left cauda epididymis.

For evaluating the effects of  $\text{Li}^+$  on LCs, these cells were isolated from healthy mice and cultured (50). For LCs isolation male gonads were quickly removed and dissected. The *tunica albuginea* and all three parts of epididymides were gently removed to expose the seminiferous tubules (ST). Then, each dissected gonad was transferred into a sterile plastic plate containing 2.5 ml phosphate-buffered saline (PBS; pH = 7.4). The testis was chopped with a tweezer in the shaking water bath (37°C) until the PBS became opaque. Subsequently, the isolated cells were centrifuged (200 g, 5 min), the supernatant was discarded and the pellet was resuspended in the F12/DMEM medium (4.5 ml, Gibco, NY, USA) supplemented with fetal calve serum (FBS; 10%, Gibco, NY, USA), 100  $\mu\text{g}/\text{mL}$  streptomycin, and 100 U/mL penicillin in a standard incubation condition (37°C, 5%  $\text{CO}_2$ ). Giemsa staining was applied for morphological identification of cultured LCs.

## Bodyweight Gain, and Organ Weight Index

Mice were weighed at the first and final days of the trial, and the bodyweight gain in each group was recorded. Testicular, epididymal, and vas-deferens weight indices were determined as weight index = [wet weight of organ (g)/body weight (g)]  $\times$  100.

## Sperm Indices

The eosin-nigrosin staining was used to evaluate spermatozoa viability and abnormality (51, 52). Briefly, the extracted caudal epididymal germ cells (100  $\mu\text{L}$ ) were incubated in PBS (35°C; pH = 7.4). Spermatozoa smear was stained with eosin-nigrosin (10  $\mu\text{L}$ ). Slides were monitored randomly for viability assay, where unstained germ cells were considered live (51, 52). The germ cells with ab-axial tail, protoplasmic droplets, double tails, malformed heads, coiled tails, bent tails, and without tail and head were considered abnormal. Spermatozoa concentration and progressive motility were also assessed based on previous studies (39, 41). Briefly, progressive motility of sperm was assessed by adding a drop of spermatozoa suspension on a glass slide covered with a coverslip. Samples were observed under a light microscope (400  $\times$  magnification, Zeiss, Jena, Germany) equipped with hot-stage (35°C). Hypoosmotic swelling test (HOST) was applied to assess the integrity of the spermatozoa plasma membrane. Briefly, 10  $\mu\text{L}$  of germ cells were suspended in 50  $\mu\text{L}$  of a hypo-osmotic solution (50-mOsm NaCl). Then, samples were then incubated for 10 min at 37°C. Finally, the spermatozoa percentage with a swollen “bubble” around the curled flagellum through counting 200 germ cells, were randomly counted on each slide using a light microscope (1,000  $\times$  magnification) (53, 54). The concentration of germ cells was assessed by a Neubauer hemocytometer using light microscopy (200  $\times$  magnification).

## Oxidative Stress Indices in Testis, Sperm, and Cultured LCs

### Reactive Oxygen Species (ROS)

Testicular, spermatozoa, and cultured LCs' ROS level was estimated using dichlorofluorescein diacetate (DCFH-DA) (55–59). Briefly, DCFH-DA was added (10  $\mu\text{M}$  final concentration) to sperm ( $10^6$  sperm/mL), isolated LCs ( $10^4$  cells/well), and homogenized testicular samples (1 mg protein/mL). Specimens were incubated in the dark (15 min, 35°C). Afterward, the DCF

fluorescence intensity was measured using a FLUOstar Omega<sup>®</sup> fluorimeter (BMG LABTECH<sup>®</sup>, Germany) at  $\lambda_{\text{excitation}} = 485 \text{ nm}$  and  $\lambda_{\text{emission}} = 525 \text{ nm}$  (37, 58, 60).

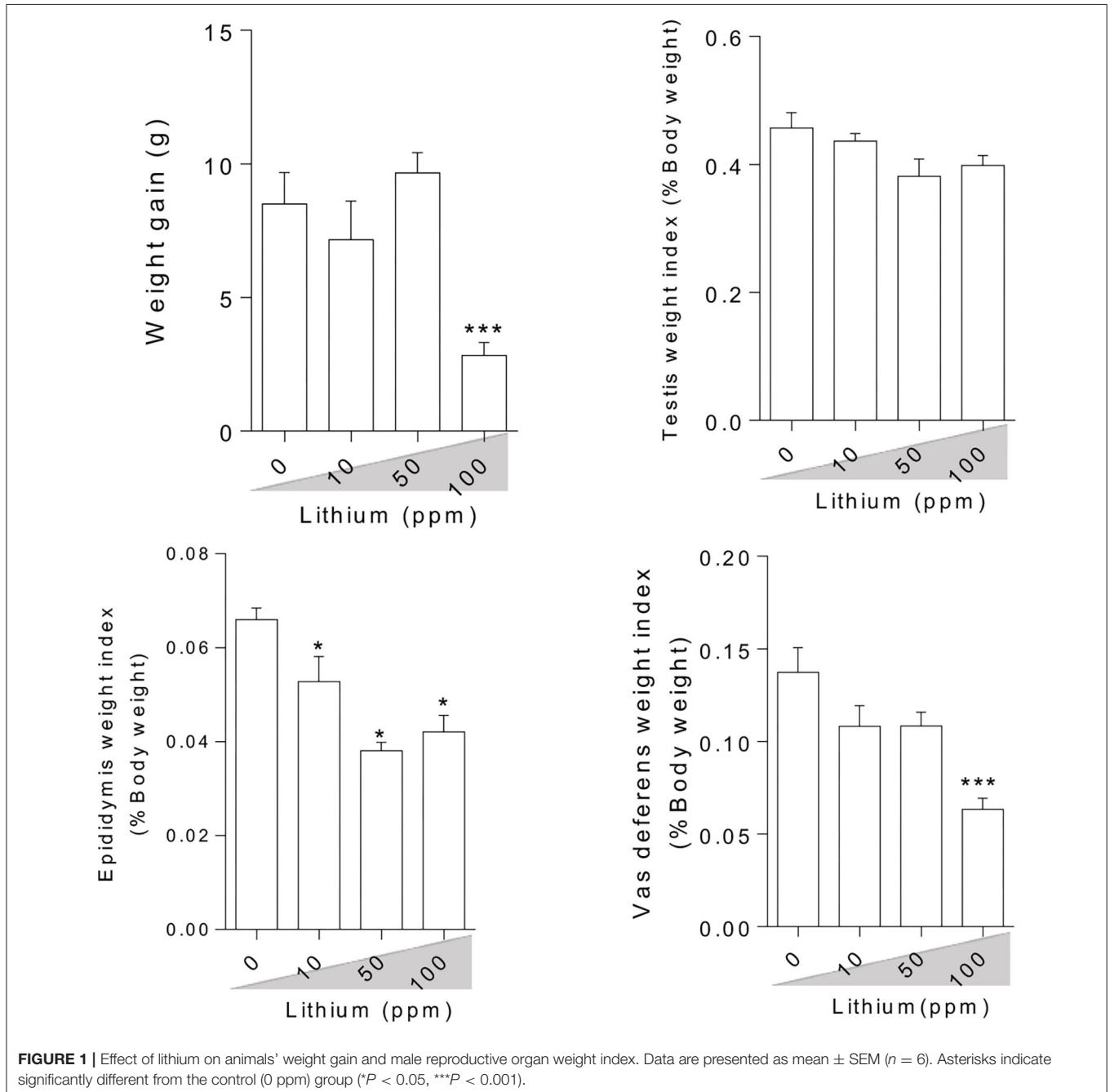
### Lipid Peroxidation

Thiobarbituric acid reactive substances (TBARS) test was used to assess lipid peroxidation in the current study (61–63). For this purpose, 500 mg of testis tissue homogenate (10% w/v in KCl, 1.15% w/v), samples of  $10^6$  sperm/mL, and isolated LCs ( $10^4$  cells/well) were added to a reaction mixture consisting of 1 mL thiobarbituric acid (0.375%, w/v) and 1 mL phosphoric

acid (1% w/v, pH = 2) (63–66). Then, samples were heated in a water bath (20 min,  $100^\circ\text{C}$ ). Afterward, 1 mL of n-butanol was mixed and mixed. Samples were centrifuged (10,000 g, 5 min) and the absorbance of the the n-butanol phase (upper phase) was measured ( $\lambda = 532 \text{ nm}$ , EPOCH<sup>®</sup> plate reader, USA) (66–68).

### Glutathione Content of the Testis Tissue, LCs, and Sperm Samples

An HPLC apparatus with an  $\text{NH}_2$  column (25 cm; Bischoff chromatography, Leonberg, Germany), was used to determine nanomole levels of reduced (GSH) and oxidized (GSSG)



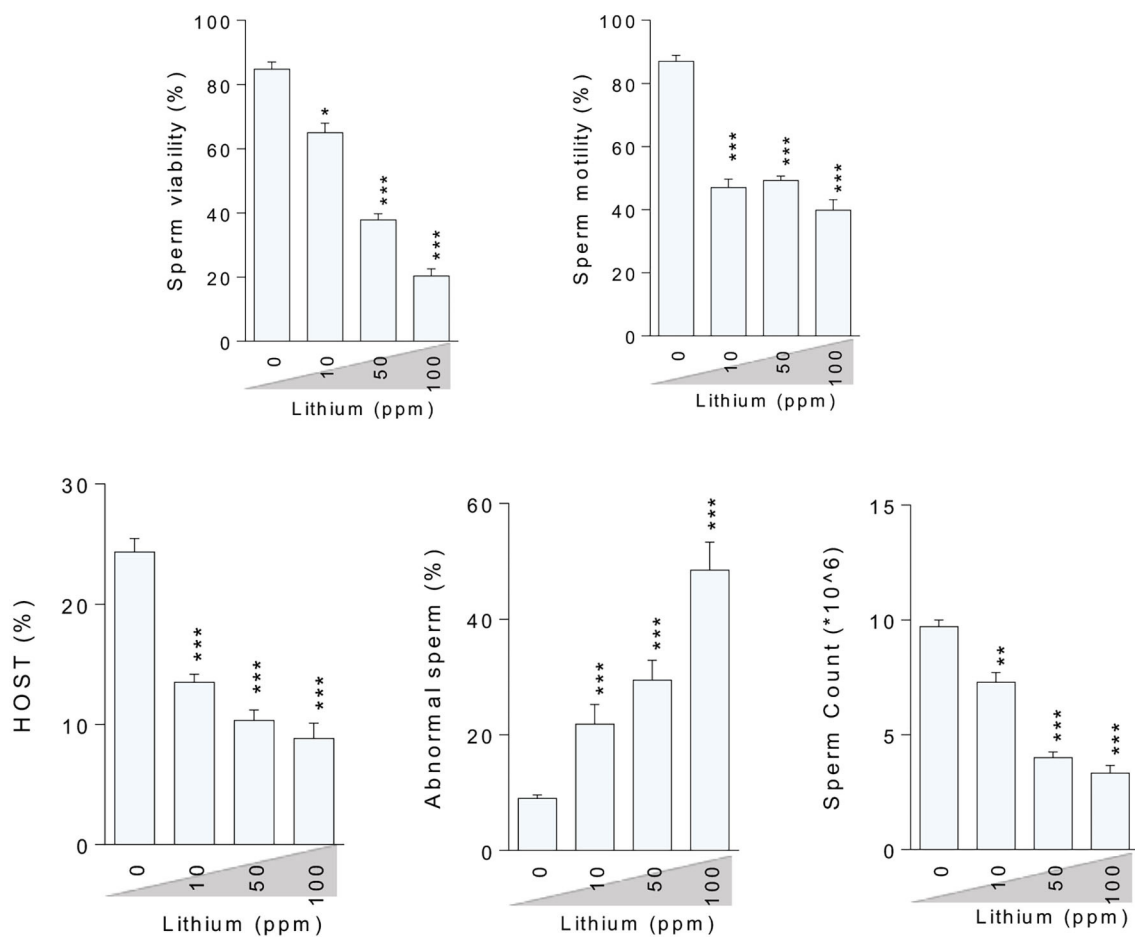
glutathione in deproteinized specimens (39, 69). Water and acetate (Buffers A; 4:1 v: v) along with a mixture of methanol with buffer A (Buffers B; 4:1 v: v) were considered as the mobile phases (flow rate = 1 mL/min). A gradient technique with a constant upsurge of buffer B to 95% in 25 min was applied (70). Samples (500  $\mu$ L of testis homogenate) was treated with 50  $\mu$ L of TCA (50% w: v, 4°C, in MiliQ water). Sperm (1 mL of  $10^6$  sperm/mL) and LCs (1 mL of  $10^6$  cells/mL) were also treated with 100  $\mu$ L of ice-cooled TCA (50% w: v, 4°C). Samples were incubated on ice (30 min). After the incubation period, samples were mixed well and centrifuged (17,000 g, 15 min, 4°C). Afterward, the supernatant was added to 5 mL tubes and treated with 0.5 mL of NaOH: NaHCO<sub>3</sub> solution (2 M: 2 M). Then, 0.1 mL of iodoacetic acid (1.5% w: v in MiliQ water) was added and the mixture was incubated in the dark (60 min; 4°C). Afterward, 0.5 mL of DNFB (1.5% v: v in HPLC grade ethanol) was carefully mixed and incubated in the dark (25°C, 24 h). Samples were centrifuged (17,000 g, 30 min, 4°C) and filtered. Finally, 25  $\mu$ L of each specimen was injected into the HPLC apparatus. The UV detector was set at  $\lambda = 252$  nm (71).

### Ferric Reducing Antioxidant Power (FRAP)

Total antioxidant capacity of testicular tissue, LCs, and sperm specimens was measured using the FRAP assay (72–74). Briefly, the working FRAP mixture was freshly prepared by mixing 25 mL of acetate buffer (300 mmol/L, pH = 3.6), 2.5 mL of TPTZ (2, 4, 6-tripyridyl-s-triazine, 10 mmol/L in 40 mmol/L hydrochloric acid), and 2.5 mL of ferric chloride (20 mmol/L). Testicular, LCs, and sperm specimens were homogenized, separately, in 0.25 M of Tris-HCl buffer (pH = 7.4; 4°C), containing 0.2 M sucrose and 5 mM dithiothreitol (DTT) (75, 76). Afterward, FRAP reagent (1.5 mL) and deionized water (150  $\mu$ L) were added to 100  $\mu$ L of homogenates and incubated at 37°C (5 min, in the dark). Finally, the absorbance was measured at  $\lambda = 593$  nm (EPOCH plate reader, USA) (72, 77–79).

### Protein Carbonylation

The testicular and cultured LC's protein oxidative damage of Li-exposed groups, was assessed by the determination of carbonyl groups based on the reaction with dinitrophenylhydrazine (DNPH) (80, 81). In summary, the tissue homogenate (1,000  $\mu$ L, 10% in KCl) and cultured LCs specimens (1 mL;  $10^4$  cells/well)



**FIGURE 2 |** Effect of lithium administration on epididymal sperm parameters in mice. HOST: Hypo-osmotic swelling test. Data are presented as mean  $\pm$  SEM ( $n = 6$ ). Asterisks indicate significantly different from the control (0 ppm) group (\* $P < 0.05$ , \*\* $P < 0.01$ , \*\*\* $P < 0.001$ ).

were mixed with 0.1 mL of TCA (20% w: v, 4°C) and centrifuged (700 g, 5 min, 4°C). Then, the supernatant was mixed with 0.3 mL of 2, 4-dinitrophenylhydrazine (DNPH; 10 mM, dissolved in 2 M HCl). Samples were incubated at room temperature (25°C, 60 min, in the dark, regularly vortexed every 10 min). Then 0.1 mL of trichloroacetic acid (20% w: v, 4°C) was added, and centrifuged (12,000 g, 10 min). The pellet was washed (three times) with 1 mL of ethanol: ethyl acetate (1:1 v: v). The final pellet was dissolved in 0.6 mL of guanidine solution (6M, in 20 mM potassium phosphate, pH = 2.3). Samples were centrifuged (12,000 g, 5 min), and the absorbance of the supernatant was measured at  $\lambda = 370$  nm (EPOCH plate reader, USA) (72).

## Measuring Mitochondrial Indices in Mice Epididymal Spermatozoa, and Cultured Lcs Mitochondrial Dehydrogenase Activity

The 3-(4, 5-dimethylthiazol-2-yl)-2, 5-diphenyltetrazolium bromide colorimetric method was used for the assessment of mitochondrial dehydrogenases activity in sperm and isolated LCs. For this purpose, the specimens (1 mg protein/mL) were incubated at 37°C for 30 min (in the dark) with 40  $\mu$ L MTT solution (5 mg/mL). Samples were centrifuged and the pellet was

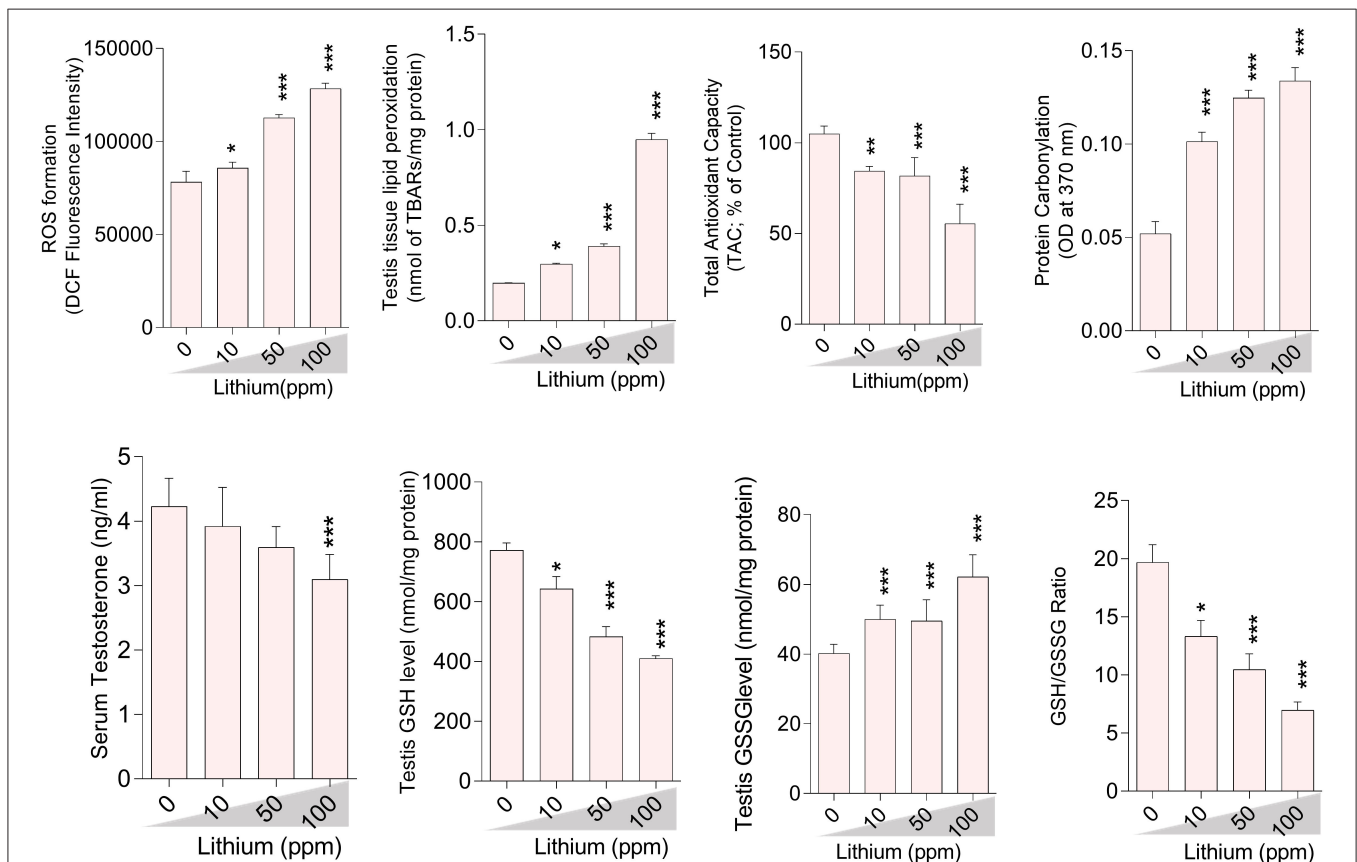
dissolved in 1,000  $\mu$ L of DMSO. The absorbance was measured at  $\lambda = 570$  nm using the EPOCH<sup>®</sup> plate reader (63, 82–84).

## Mitochondrial Depolarization

Mitochondrial uptake of rhodamine-123 was applied as a method for the determination of sperm and cultured LCs mitochondrial depolarization (55, 80, 83, 85, 86). Briefly, the specimens (1 mg protein/mL) were incubated with rhodamine-123 (35°C, 15 min, in the dark) and then centrifuged (10,000 g, 5 min, 4°C) (87–89). Finally, the fluorescence intensity (FI) of the supernatant was measured at  $\lambda_{\text{excitation}} = 485$  nm and  $\lambda_{\text{emission}} = 525$  nm using a fluorimeter (BMG LABTECH<sup>®</sup>, Germany) (55, 83, 90).

## Assessment of ATP Levels

The ATP level in sperm and LCs was assessed by an HPLC method (91). For this purpose, LCs ( $10^4$  Cells/mL) and sperm specimens ( $10^6$  sperm/mL) were treated with 100  $\mu$ L ice-cooled meta-phosphoric acid (50% w: v, 4°C). Samples were mixed and incubated on ice for 10 min. Afterward, samples were centrifuged (30 min, 17,000 g, 4°C), and the supernatant (100  $\mu$ L) was treated with ice-cooled KOH (10  $\mu$ L of 1 M solution) (92). Samples were centrifuged (30 min, 17,000 g, 4°C), and 20  $\mu$ L of the supernatant was injected into an HPLC system. The HPLC system consisted of an LC-18 column (25 cm  $\mu$ -Bondapak<sup>®</sup> column). The mobile



**FIGURE 3** | Biomarkers of oxidative stress in the testis tissue of lithium-treated mice. Data are presented as mean  $\pm$  SEM ( $n = 6$ ). Asterisks indicate significantly different from the control (0 ppm) group (\* $P < 0.05$ , \*\*\* $P < 0.001$ ).

phase was a mixture of potassium phosphate buffer (100 mM  $\text{KH}_2\text{PO}_4$ , pH = 7 adjusted with KOH), tetrabutylammonium hydroxide (1 mM), and acetonitrile (2.5% v: v) (63, 89, 93). An isocratic method with the flow rate was 1 mL/min was used. The UV detector was set at  $\lambda = 254 \text{ nm}$  (63, 94).

### Testosterone (T) Biosynthesis in $\text{Li}^+$ -Exposed LCs

An ELISA-based testosterone assay kit (Elabscience, Wuhan, China) was used to measure T content in  $\text{Li}^+$ -exposed LCs [44]. For T generation, isolated LCs ( $2 \times 10^5$  cells/well) were seeded in 24-well plates. After 24 h of incubation, the quality of cells was monitored and then cultured with various doses of  $\text{Li}^+$  (0, 10, 50, and 100 ppm) for 48 h. After the exposure time, media were gathered, and centrifuged (3,000 rpm, 10 min). The supernatant was used for assessing T levels.

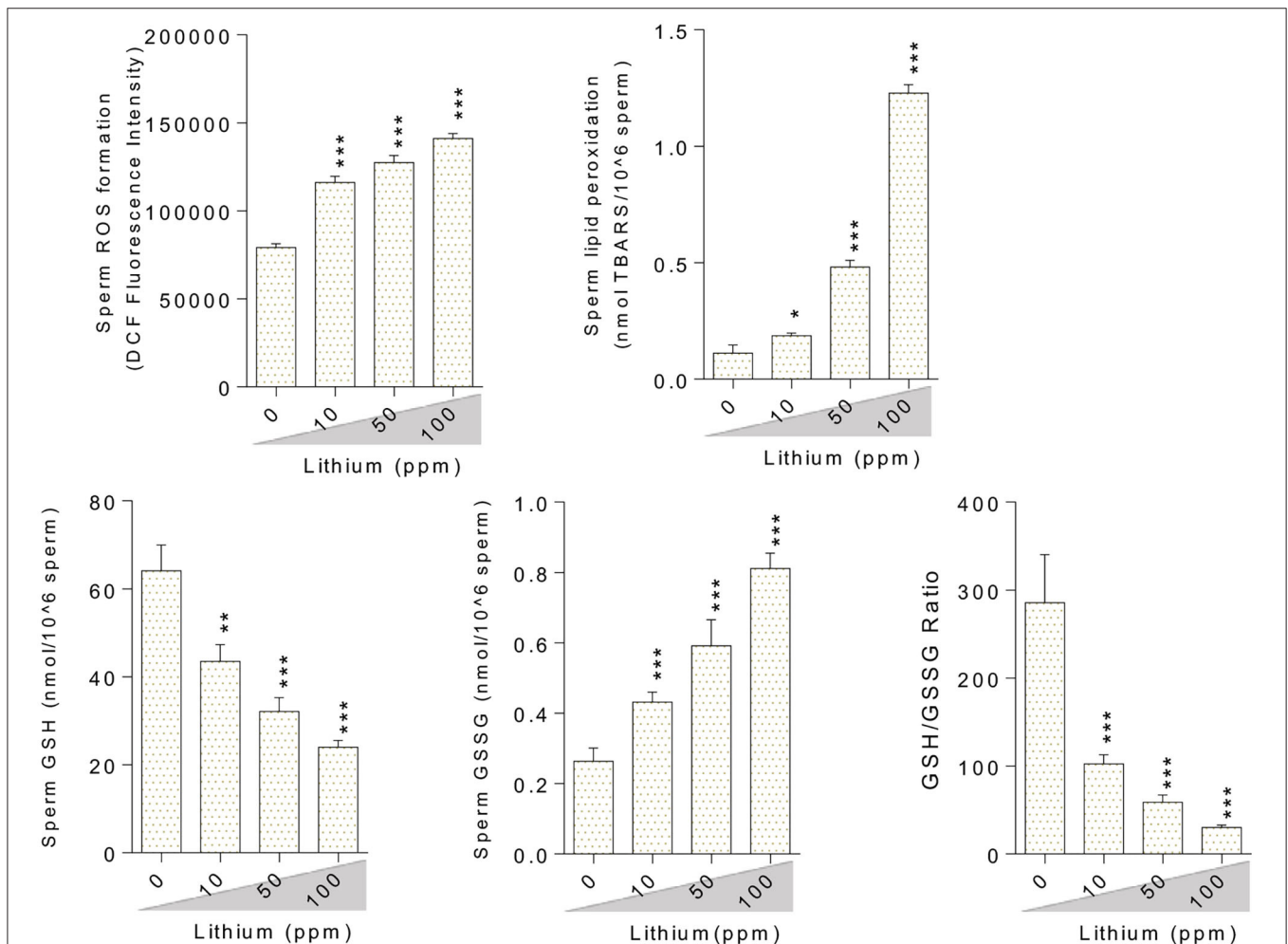
### Cellular Lactate Dehydrogenase (LDH) Release

A commercial kit (Pars Azmun<sup>®</sup>, Tehran, Iran) and Mindray<sup>®</sup> BS-200 autoanalyzer (Guangzhou, China) were used to assess

cells lactate dehydrogenase (LDH) levels in cultured LCs (95, 96). Isolated LCs were treated with different concentrations of  $\text{Li}^+$  (0, 10, 50, and 100 ppm) after the incubation period. Afterward, 200  $\mu\text{L}$  of the culture medium was taken, and the LDH content was measured.

### LCs Viability Assay

The viability of LCs was examined based on a colorimetric technique using MTT (49). Briefly, the LCs were seeded in quadruplicate into 96-well plates at a density of  $1 \times 10^4$  cells/well and allowed to attach into the cells overnight at  $37^\circ\text{C}$  with 5%  $\text{CO}_2$ . LCs were challenged with  $\text{Li}^+$  (0, 10, 50, and 100 ppm) for 48 h at  $37^\circ\text{C}$ . Afterwards, the LCs ( $1 \times 10^4$  cells/well) were incubated with MTT (0.4%,  $37^\circ\text{C}$ , 30 min, 5%  $\text{CO}_2$ ). Plates were centrifuged (3,000 g, 15 min) and the purple pellet was dissolved in 1,000  $\mu\text{L}$  dimethyl sulfoxide (DMSO). Finally, the optical density (OD) was measured at  $\lambda = 570 \text{ nm}$  (EPOCH plate reader, BioTek<sup>®</sup> Instruments, USA) (21, 97).

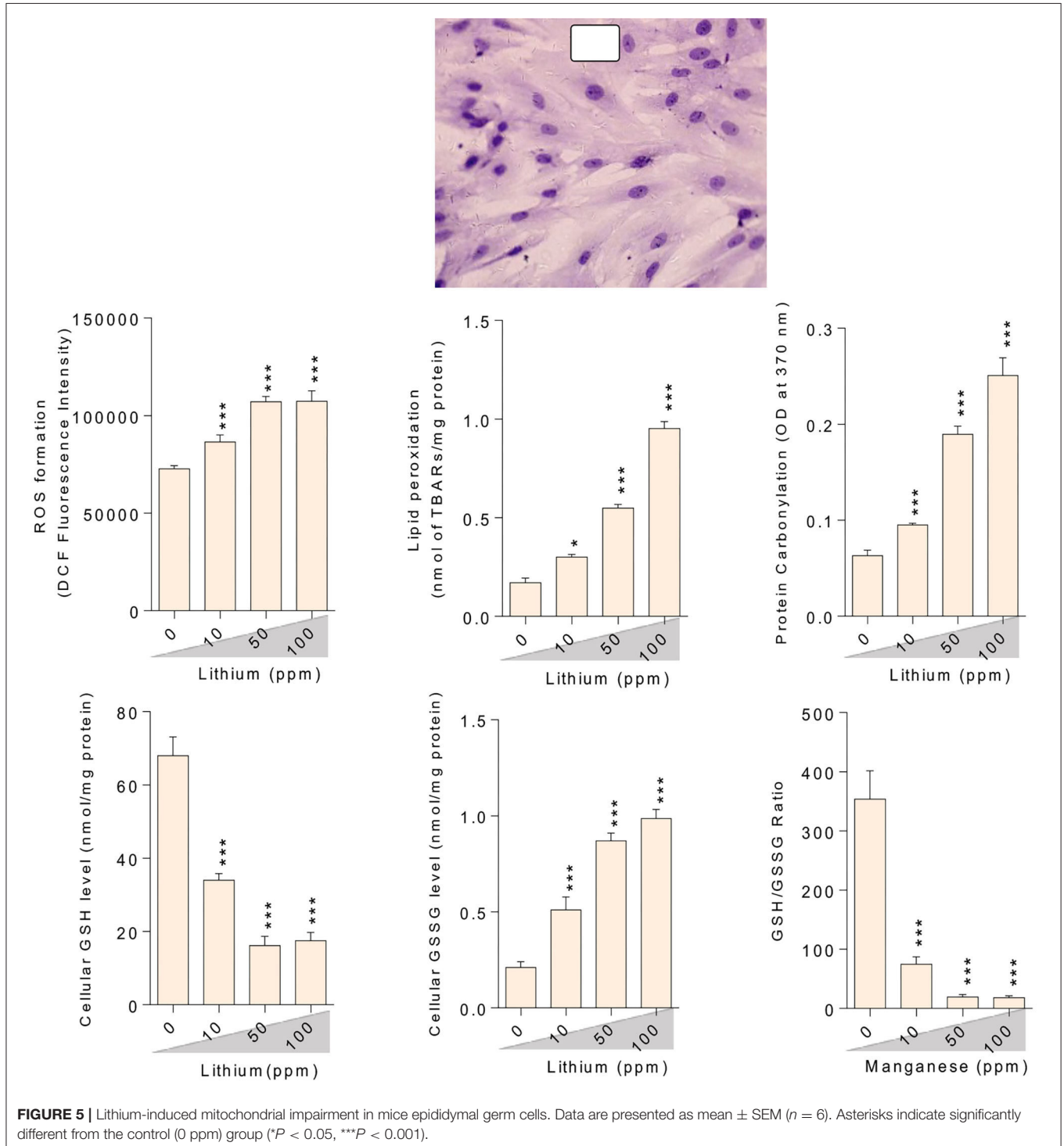


**FIGURE 4** | Biomarkers of oxidative stress in the epididymal sperm of lithium-exposed mice. Data are presented as mean  $\pm$  SEM ( $n = 6$ ). Asterisks indicate significantly different from the control (0 ppm) group (\* $P < 0.05$ , \*\* $P < 0.01$ , \*\*\* $P < 0.001$ ).

### Testicular Histopathological Alterations

Male gonads were fixed in a buffered formalin solution (10% formaldehyde in phosphate buffer; pH = 7.4). The fixed tissue was paraffin-embedded and specimens were sectioned (5 μm) using a rotary microtome.

Tissue sections were then stained with hematoxylin-eosin (H&E). Testicular histopathological changes were monitored and recorded by a specialized pathologist in a blind manner using a light microscope (Olympus BX41; Olympus Optical Co. Ltd, Japan). Testis tissue





histopathological alterations were quantified as previously reported (98–100).

## Statistical Analysis

Data were expressed as Mean  $\pm$  SEM. Data analysis was performed by the one-way analysis of variance (ANOVA), and mean comparison performed using the Tukey's multiple comparison test as the *post hoc* test at  $P < 0.05$  (GraphPad Prism 8).

## RESULTS

### Bodyweight Gain and Organ Weight Index

Bodyweight and reproductive organ weight index measurement in the  $\text{Li}^+$ -exposed mice uncovered significant variations (Figure 1). It was observed that live bodyweight considerably decreased in the group receiving a high dose of  $\text{Li}^+$  (100 ppm). On the other hand, the weight index was significantly reduced in the epididymis weight index of the mice exposed to various doses of  $\text{Li}^+$  (10, 50, and 100 ppm) and vas-deferens weight index of the animal challenged with the highest

dose of  $\text{Li}^+$  (100 ppm). However, there was no significant difference in the testis weight index among all trial groups (Figure 1).

### Sperm Indices

Assessment of the epididymal spermatozoa indices showed a dose-dependent increment in the percentage of abnormality along with a decrement in the rate of spermatozoa viability, motility, HOST, and sperm count in the  $\text{Li}^+$ -challenged mice, in a dose-dependent manner (except of the motility index) (Figure 2).

### Oxidative Stress Biomarkers

Oxidative stress indices were assessed in the testis tissue (Figure 3), epididymal spermatozoa (Figure 4) of the male mice (*in-vivo*), and isolated/cultured LCs (*in-vitro*) challenged with various doses of  $\text{Li}^+$  (Figure 5; Giemsa staining was used for morphological observation of cultured LCs). Significant ROS levels in addition to lipid peroxidation, protein carbonylation, and oxidized glutathione (GSSG) were found in the testis tissue, extracted epididymal spermatozoa, and cultured/exposed LCs in  $\text{Li}^+$ -treated groups, approximately in a dose-dependent-manner (Figures 3–5). Meanwhile, it was also observed that total antioxidant capacity (TAC) along with glutathione (GSH) level and the ratio of GSH / GSSG were significantly decreased in  $\text{Li}^+$ -exposed groups (Figures 3–5).

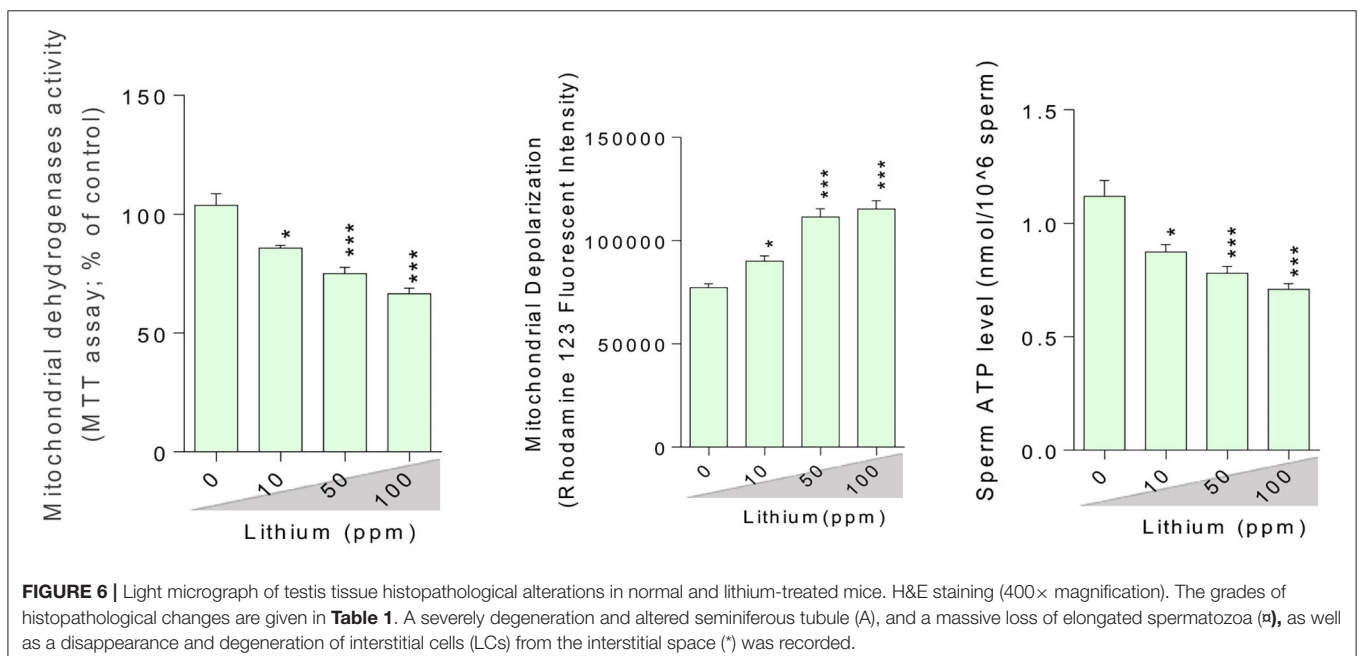
### Mitochondrial Indices, Cytotoxicity Markers, and Testosterone Biosynthesis

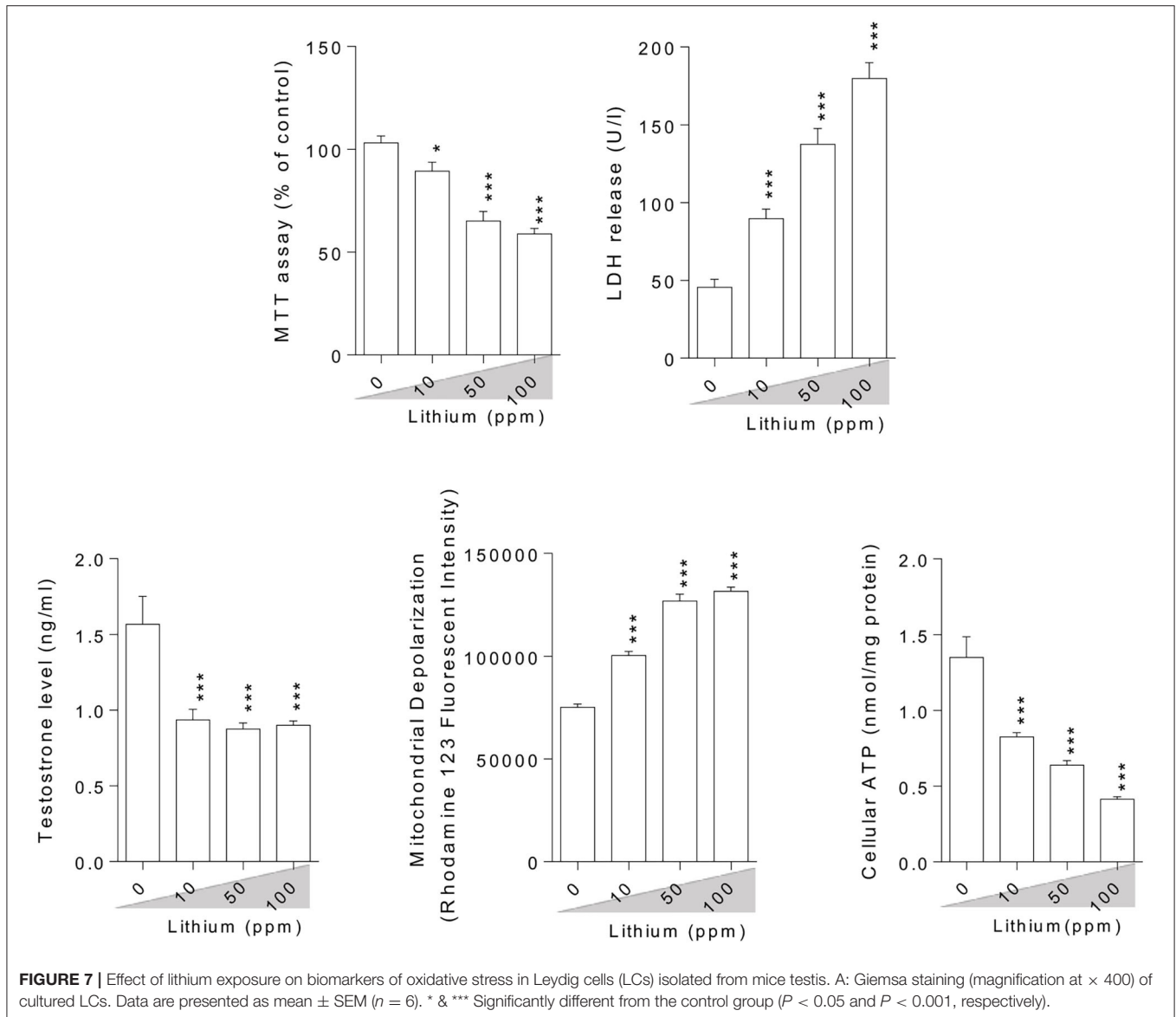
Epididymal spermatozoa and cultured/exposed LCs mitochondrial parameters revealed significant mitochondrial depolarization, decreased dehydrogenases activity, and depleted ATP content in  $\text{Li}^+$ -exposed groups, in a dose-proportional

**TABLE 1** | Testis tissue histopathological alterations in lithium-exposed mice.

	Tubular injury	Tubular desquamation	Spermatogenic index
Control (Lithium 0 ppm)	-	-	1
Lithium 10 ppm	+	++	1
Lithium 50 ppm	++	+++	0.8
Lithium 100 ppm	+++	+++	0.75

+: Mild; ++: Moderate; and +++: Severe histopathological alterations.





manner (Figures 6, 7). Along with these alterations, our data showed that cellular LDH release and T levels were dose-dependently increased and significantly decreased in mice isolated/exposed LCs, respectively (Figure 7). Serum testosterone levels were also significantly lower than the control group in mice exposed to 100 ppm of  $\text{Li}^+$  (Figure 3).

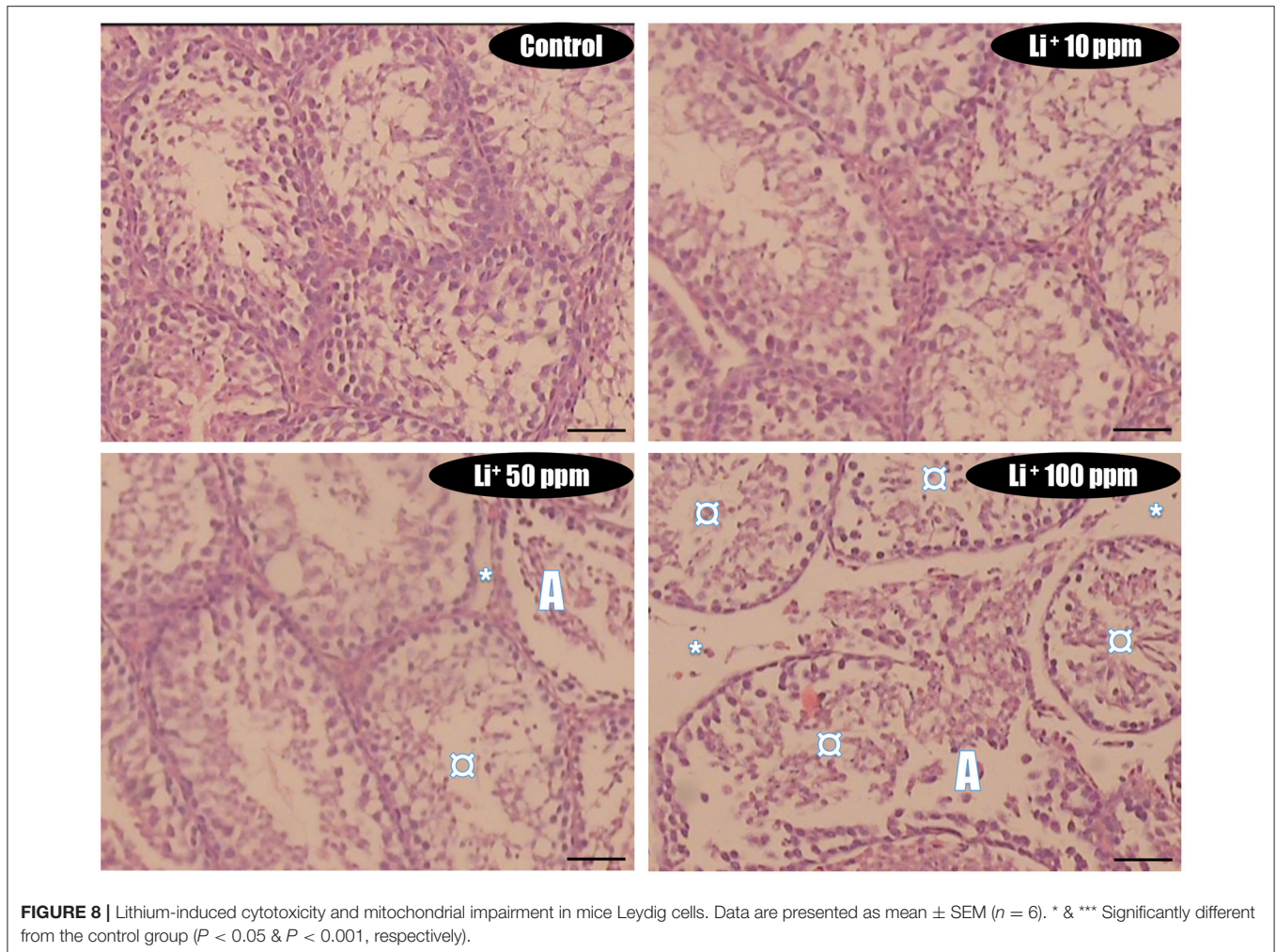
### Histopathology Alterations of the Testis Tissue

In  $\text{Li}^+$ -exposed mice with various doses (10, 50, and 100 ppm in drinking water/day), the male gonad revealed the severe tubular injury, tubular desquamation, and low spermatogenic index. However, the maximum alterations were observed in the group received the highest dose (100 ppm) of  $\text{Li}^+$  (Table 1 and Figure 8). No significant histopathological changes were detected between the groups of low (10 ppm) and medium (50 ppm)

(Figure 8). It is noteworthy that serum and testis tissue levels of  $\text{Li}^+$  was significantly higher in drug-treated groups (Figure 9).

## DISCUSSION

$\text{Li}^+$  is a drug used for the treatment of a wide range of neurological disorders (1). Despite its tremendous clinical value, several adverse effects have been attributed to  $\text{Li}^+$  (1). Several reports of  $\text{Li}^+$ -induced reproductive toxicity have also been reported (2, 16, 20, 26). Unfortunately, there is no precise mechanism(s) for  $\text{Li}^+$ -induced reproductive toxicity. Hence, this investigation was planned to monitor the deleterious effects of  $\text{Li}^+$  on reproductive indices of male mice in two *in-vitro* and *in-vivo* models. It was found that  $\text{Li}^+$ -induced mitochondrial impairment and oxidative stress play a significant role in its adverse effects on male reproductive system.

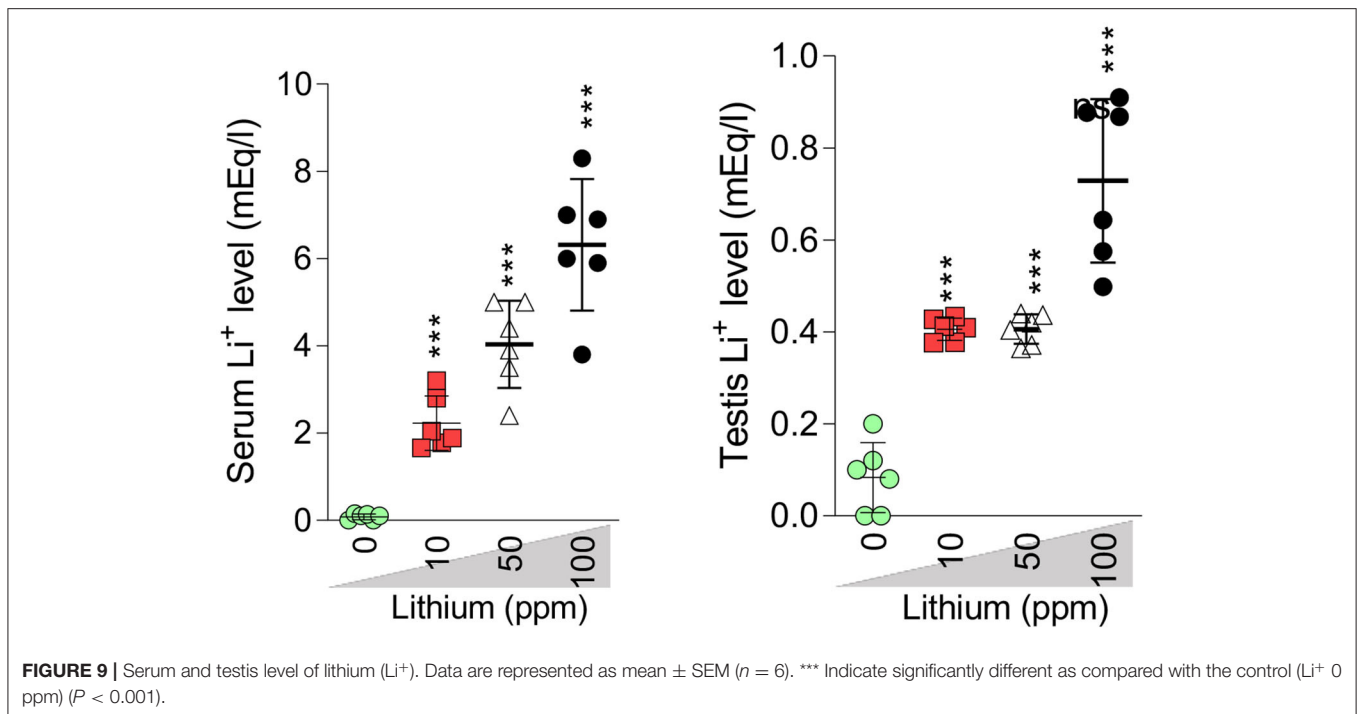


Several investigations mentioned the primary role of oxidative stress (OS) in the pathogenesis of reproductive system dysfunction (16, 20, 26, 101). Many anomalies in the functionality of spermatozoa are attributed to the increased level of ROS in testis and semen (37–40) through severe impairments of DNA, interruption of plasma membrane integrity, and denaturation of proteins (41–43). It is well-known that interstitial cells (Leydig cells; LCs) into the male gonad are formed of many lipid-filled vesicles; therefore, the LCs are liable to OS via the exogenous ROS producing by mitochondria as their pivotal by-products (50). Quinn and Payne (102) have also been shown that steroidogenic-related cytochrome p450 enzymes can produce ROS in the LCs through the mechanisms related to their catalytic reactions.

There is no precise mechanism for the source of ROS in males treated with  $\text{Li}^+$ . On the other hand, there is no specific description for reproductive indices abnormalities (e.g., sperm motility) in  $\text{Li}^+$ -treated patients. In line with previous studies, we found that OS is involved in the mechanism of testis and sperm injury in  $\text{Li}^+$ -treated animals. The current study also revealed the effects of  $\text{Li}^+$  on testosterone biosynthesis in both *in vivo* and *in vitro* models. More importantly, we found that mitochondrial

impairment could play a critical role in sperm abnormality, LC's injury, and testis injury in  $\text{Li}^+$ -exposed groups.  $\text{Li}^+$ -induced mitochondrial impairment and decreased ATP levels could induce decreased sperm motility.

Finding the mechanism(s) of xenobiotics-induced organ injury is a critical step in developing therapeutic options.  $\text{Li}^+$  is a drug with adverse effects on the reproductive system. There are several lines of evidence indicating the pivotal role of OS in the pathogenesis of  $\text{Li}^+$ -induced reproductive toxicity (2, 16, 20, 26). At the sub-cellular levels, we found that sperm mitochondria are a critical target for  $\text{Li}^+$ -induced sperm abnormalities. The motility of sperm in  $\text{Li}^+$ -treated groups was significantly lower as compared with the control animals (Figure 2). This important data could indicate the lack of energy (ATP) for sperm motility. Moreover, we also found that LC's ATP level was significantly depleted. This event could hamper the physiological role of these basic testes' cells in the synthesis and secretion of testosterone (Figure 7). All these events could finally lead to reduced reproductive performance in patients who are treated with  $\text{Li}^+$  for a long time.



Disturbed sperm mitochondrial function in  $\text{Li}^+$ -treated animals could occur through several pathways. It has been found that  $\text{Li}^+$  can readily enter the mitochondrial matrix.  $\text{Li}^+$  could disrupt mitochondrial membrane potential as the driving force for ATP production (44, 45, 103). It has also been found that  $\text{Li}^+$  could adversely interact with mitochondrial electron transport chain (44, 45, 103).  $\text{Li}^+$  is also able to increase mitochondrial permeability (mPT) and ease the release of various cell death mediators to the cytoplasm (44, 45, 103). All these events could finally lead to cell death.

In the current study, we found that  $\text{Li}^+$  administration significantly impaired sperm parameters in the drug-treated mice. The adverse effects of this drug on mitochondrial function and OS parameters seems to play a pivotal role in its adverse impact on the reproductive system. On the other hand, we found that the treatment of isolated LCs with  $\text{Li}^+$  caused a significant decrease in testosterone production, increased LDH release, and a substantial reduction in cell viability (MTT assay) (Figure 7). Moreover, mitochondrial membrane potential and ATP levels were significantly decreased in  $\text{Li}^+$ -exposed LCs (Figure 7). Mitochondrial impairment could lead to an energy crisis. As the proper mitochondrial function is a critical factor for proper sperm function (e.g., sperm motility) (104), any changes in mitochondrial function could lead to sperm abnormalities. Altogether, all these data indicate a role for OS and mitochondrial impairment in the pathogenesis of  $\text{Li}^+$ -induced reproductive toxicity. Hence, antioxidants and mitochondria protecting agents could serve as viable therapeutic options against this adverse effect. Recently, several antioxidant agents have been tested against  $\text{Li}^+$ -induced organ injury (16, 105). On the other hand, we tested several safe and clinically

applicable agents (amino acids and peptides), which could boost mitochondrial function and energy metabolism (34, 67, 106–109). We hope that these agents could finally find a clinical application against drug-induced organ injury (e.g.,  $\text{Li}^+$ -induced reproductive toxicity). Indeed, further studies are needed to identify the precise mechanisms of  $\text{Li}^+$ -induced reproductive organ injury, the possible interaction of ancillary treatments with the pharmacological effects of  $\text{Li}^+$ , and finally, translating these experimental data to the clinical settings.

## DATA AVAILABILITY STATEMENT

The original contributions presented in the study are included in the article/supplementary material, further inquiries can be directed to the corresponding author/s.

## ETHICS STATEMENT

The animal study was reviewed and approved by All animal procedures were performed according to the regulations and guidelines of the local ethics committee at Shiraz University of Medical Sciences, Shiraz, Iran (#97-01-36-16776).

## AUTHOR CONTRIBUTIONS

MO, RH, AJ, and HN conceived and planned the experiments. MA, OF, ZJ, MN, KM, AA, MAZ, and SR-M performed the measurements and collected data. MO, RH, AJ, and NA contributed to the interpretation and visualization of the

results. SR-M, MO, RH, NA, AJ, and HN also revised the whole manuscript to prevent grammar and syntax errors. All authors contributed toward data analysis, drafting, revising the paper, gave final approval of the version to be published, and agreed to be accountable for all aspects of the work. ZJ was completely involved in the manuscript (data collection, draft preparation, data visualization, and the confirmation of the final draft).

## FUNDING

This investigation was financially supported by the Vice-Chancellor of Research Affairs of Shiraz University of Medical Science (Grant Number: 97-01-36-16776; provided by RH). Authors thank the Pharmaceutical Sciences Research Center of

Shiraz University of Medical Science for providing technical facilities to carry out this study. This study was also supported by Shanxi Government Scholarship for International Research Assistant (National Natural Science Foundation of China (CN); Grant no. 2018YJ33; provided by MO), and outstanding doctors are volunteering to work in Shanxi Province (No. K271999031; by MO), Shanxi Province, China.

## ACKNOWLEDGMENTS

Authors would like to thank Mr. Ehsan Ommati for English proofreading of the current study. The Pharmaceutical Sciences Research Center of Shiraz University of Medical Sciences is acknowledged for providing technical facilities to carry out this study.

## REFERENCES

- Davis C. Lithium. In: Enna SJ, Bylund DB, editors. *xPharm: The Comprehensive Pharmacology Reference*. New York, NY: Elsevier (2007). doi: 10.1016/B978-008055232-3.62041-0
- Aral H Vecchio-Sadus A. Toxicity of lithium to humans and the environment—a literature review. *Ecotoxicol Environ Saf.* (2008) 70:349–56. doi: 10.1016/j.ecoenv.2008.02.026
- Waring WS. Management of lithium toxicity. *Toxicol Rev.* (2006) 25:221–30. doi: 10.2165/00139709-200625040-00003
- Nielsen FH. Ultratrace elements in nutrition: current knowledge and speculation. *J Trace Elem Exp Med.* (1998) 11:251–74. doi: 10.1002/(SICI)1520-670X(1998)11:2/3<251::AID-JTRA15>3.0.CO;2-Q
- Schrauzer GN. Lithium: occurrence, dietary intakes, nutritional essentiality. *J Am Coll Nutr.* (2002) 21:14–21. doi: 10.1080/07315724.2002.10719188
- Nassir Ghaemi S, Mauer S Omalu BI. Lithium treatment for chronic traumatic encephalopathy: a proposal. *Bipolar Disorders.* (2019) 21:104–5. doi: 10.1111/bdi.12757
- Tondo L, Alda M, Bauer M, Bergink V, Grof P, Hajek T, et al. Clinical use of lithium salts: guide for users and prescribers. *Int J Bipolar Disord.* (2019) 7:16. doi: 10.1186/s40345-019-0151-2
- Webb AL, olomon DA Ryan CE. Lithium levels and toxicity among hospitalized patients. *Psychiatr Serv.* (2001) 52:229–31. doi: 10.1176/appi.ps.52.2.229
- Servais A. Renal toxicity of lithium. *Nephrol Ther.* (2019) 15:120–6. doi: 10.1016/j.nephro.2018.11.001
- Groleau G. Lithium toxicity. *Emerg Med Clin N Am.* (2020) 12:511–31. doi: 10.1016/S0733-8627(20)30440-5
- Ommati MM, Niknahad H, Farshad O, Azarpira N Heidari R. *In vitro* and *in vivo* evidence on the role of mitochondrial impairment as a mechanism of lithium-induced nephrotoxicity. *Biol Trace Elem Res.* (in press). doi: 10.1007/s12011-020-02302-9
- Netto I, Phutane V Ravindran B. Lithium neurotoxicity due to second-generation antipsychotics combined with lithium: A systematic review. *Prim Care Compan CNS Disord.* (2019) 21:17r02225. doi: 10.4088/PCC.17r02225
- Dar S, Bhat B, Khanam A, Wani Z, Nabi J, Sheikh S. Thyroid hormone levels and ultrasonographic changes in thyroid gland of patients on long-term lithium treatment for affective disorders: a controlled study. *Med J.* (2020) 13:73–8. doi: 10.4103/mjdrdypu.mjdrdypu\_87\_19
- Kuhnly J, Granoff A. Exfoliative dermatitis during lithium treatment. *Am J Psychiat.* (2020) 136:1340–41. doi: 10.1176/ajp.136.10.1340
- Priyadharshini BS Ummer IS. Prevalence and sociodemographic profile of lithium-induced cutaneous side effects in bipolar affective disorder patients: a 1-year prospective observational study in South India. *Indian J Psychol Med.* (2017) 39:648–52. doi: 10.4103/IJPSYM.IJPSYM\_87\_17
- Saad AB, Rjeibi I, Alimi H, Ncib S, Smida A, Zouari N Zourgui L. Lithium induced, oxidative stress and related damages in testes and heart in male rats: the protective effects of Malva sylvestris extract. *Biomed Pharmacother.* (2017) 86:127–35. doi: 10.1016/j.biopha.2016.12.004
- Rossipal E, Krachler M, Li F Micetic-Turk D. Investigation of the transport of trace elements across barriers in humans: studies of placental and mammary transfer. *Acta Paediatr.* (2000) 89:1190–5. doi: 10.1080/080352500750027556
- Ghosh C Marchi N. Drug permeation across the fetal maternal barrier. In: Janigro D, editor. *Mammalian Brain Development*. Totowa, NJ: Humana Press (2009).
- Raof NT, Pearson RM Turner P. Lithium inhibits human sperm motility *in vitro*. *Br J Clin Pharmacol.* (1989) 28:715–7. doi: 10.1111/j.1365-2125.1989.tb03565.x
- Filippa VP Mohamed FH. Lithium therapy effects on the reproductive system. In: *Psychiatry and Neuroscience Update*. Springer (2019). doi: 10.1007/978-3-319-95360-1\_16
- Heidari R. The footprints of mitochondrial impairment and cellular energy crisis in the pathogenesis of xenobiotics-induced nephrotoxicity, serum electrolytes imbalance, and Fanconi's syndrome: a comprehensive review. *Toxicology.* (2019) 423:1–31. doi: 10.1016/j.tox.2019.05.002
- Blay SL, Ferraz MP Calil HM. Lithium-induced male sexual impairment: two case reports. *J Clin Psychiatr.* (1982) 43:497–8.
- Aizenberg D, Sigler M, Zemishlany Z Weizman A. Lithium and male sexual function in affective patients. *Clin Neuropharmacol.* (1996) 19:515–9. doi: 10.29252/ijrm.14.2.109
- Ghosh D, Biswas N, Chaudhuri A Ghosh P. Direct effects of lithium chloride on testicular delta 5-3 beta and 17 beta-hydroxysteroid dehydrogenase activities in the rat-*in vitro* study. *Acta Physiol Hung.* (1990) 76:287–90.
- Allagui MS, Hfaiedh N, Croute F, Guermazi F, Vincent C, Soleilhavoup J-P El Feki A. [Side effects of low serum lithium concentrations on renal, thyroid, and sexual functions in male and female rats]. *C R Biol.* (2005) 328:900–11. doi: 10.1016/j.crv.2005.08.005
- Thakur SC, Thakur SS, Chaube SK Singh SP. Subchronic supplementation of lithium carbonate induces reproductive system toxicity in male rat. *Reproduct Toxicol.* (2003) 17:683–90. doi: 10.1016/S0890-6238(03)00107-2
- Halder T, Datta U, Basu S Mukherjee P. Is lithium essential for epididymal sperm maturation? *Med Hypotheses.* (2016) 96:48–50. doi: 10.1016/j.mehy.2016.09.018
- Banerji T, Maitra S, Basu A Hawkins H. Lithium-induced alterations in the testis of the male roseringed parakeet (*Psittacula krameri*): evidence for significant structural changes and disruption in the spermatogenic activity. *Endocr Res.* (1999) 25:35–49. doi: 10.1080/07435809909066128
- Banerji T, Maitra S, Dey M Hawkins H. Gametogenic responses of the testis in spotted munia (*Lonchura punctulata*; Aves) to oral administration of lithium chloride. *Endocr Res.* (2001) 27:345–56. doi: 10.1081/erc-100106012
- Ghosh D, Chaudhuri A, Biswas NM Ghosh PK. Effects of lithium chloride on testicular steroidogenic and gametogenic functions in mature

- male albino rats. *Life Sci.* (1990) 46:127–37. doi: 10.1016/0024-3205(90)90045-s
31. Heidari R, Niknahad H, Jamshidzadeh A, Eghbal MA, Abdoli N. An overview on the proposed mechanisms of antithyroid drugs-induced liver injury. *Adv Pharm Bull.* (2015) 5:1–11. doi: 10.5681/apb.2015.001
  32. Ferrari CKB. Effects of xenobiotics on total antioxidant capacity. *Interdiscip Toxicol.* (2012) 5:117–22. doi: 10.2478/v10102-012-0019-0
  33. Ommati MM, Heidari R. Betaine, heavy metal protection, oxidative stress, and the liver. In: Patel VB, Preedy VR, editors. *Toxicology*. Netherlands: Academic Press (2021).
  34. Heidari R, Behnamrad S, Khodami Z, Ommati MM, Azarpira N, Vazin A. The nephroprotective properties of taurine in colistin-treated mice is mediated through the regulation of mitochondrial function and mitigation of oxidative stress. *Biomed Pharmacother.* (2019) 109:103–11. doi: 10.1016/j.biopha.2018.10.093
  35. Valko M, Morris H, Cronin MTD. Metals, toxicity and oxidative stress. *Curr Med Chem.* (2005) 12:1161–208. doi: 10.2174/0929867053764635
  36. Ommati MM, Heidari R. Amino acids ameliorate heavy metals-induced oxidative stress in male/female reproductive tissue. In: Patel VB, Preedy VR editors. *Toxicology*. Netherlands: Academic Press (2021).
  37. Ommati MM, Heidari R, Jamshidzadeh A, Zamiri MJ, Sun Z, Sabouri S, et al. Dual effects of sulfasalazine on rat sperm characteristics, spermatogenesis, and steroidogenesis in two experimental models. *Toxicol Lett.* (2018) 284:46–55. doi: 10.1016/j.toxlet.2017.11.034
  38. Ommati MM, Jamshidzadeh A, Heidari R, Sun Z, Zamiri MJ, Khodaei F, et al. Carnosine and histidine supplementation blunt lead-induced reproductive toxicity through antioxidative and mitochondria-dependent mechanisms. *Biol Trace Elem Res.* (2019) 187:151–62. doi: 10.1007/s12011-018-1358-2
  39. Ommati MM, Manthari RK, Tikka C, Niu R, Sun Z, Sabouri S, et al. Arsenic-induced autophagic alterations and mitochondrial impairments in HPG-S axis of mature male mice offspring (F1-generation): a persistent toxicity study. *Toxicol Lett.* (2020) 326:83–98. doi: 10.1016/j.toxlet.2020.02.013
  40. Ommati MM, Farshad O, Niknahad H, Arabnezhad MR, Azarpira N, Mohammadi HR, et al. Cholestasis-associated reproductive toxicity in male and female rats: the fundamental role of mitochondrial impairment and oxidative stress. *Toxicol Lett.* (2019) 316:60–72. doi: 10.1016/j.toxlet.2019.09.009
  41. Ommati M, Zamiri M, Akhlaghi A, Atashi H, Jafarzadeh M, Rezvani M, Saemi F. Seminal characteristics, sperm fatty acids, and blood biochemical attributes in breeder roosters orally administered with sage (*Salvia officinalis*) extract. *Animal Production Sci.* (2013) 53:548–54. doi: 10.1071/AN12257
  42. Saemi F, Zamiri M, Akhlaghi A, Niakousari M, Dadpasand M, Ommati M. Dietary inclusion of dried tomato pomace improves the seminal characteristics in Iranian native roosters. *Poult Sci.* (2012) 91:2310–5. doi: 10.3382/ps.2012-02304
  43. Michalik S, Bernhardt J, Otto A, Moche M, Becher D, Meyer H, et al. Life and death of proteins: a case study of glucose-starved *Staphylococcus aureus*. *Mol Cell Proteomics.* (2012) 11:558–70. doi: 10.1074/mcp.M112.017004
  44. Bahareh Sadat Y, Romina A, Jalal P. A new approach on lithium-induced neurotoxicity using rat neuronal cortical culture: involvement of oxidative stress and lysosomal/mitochondrial toxic cross-talk. *Main Group Met Chem.* (2020) 43:15–25. doi: 10.1515/mgmc-2020-0003
  45. Salimi A, Gholamifard E, Naserzadeh P, Hosseini M-J, Pourahmad J. Toxicity of lithium on isolated heart mitochondria and cardiomyocyte: a justification for its cardiotoxic adverse effect. *J Biochem Mol Toxicol.* (2017) 31:e21836. doi: 10.1002/jbt.21836
  46. Qassem M, Triantis I, Hickey M, Palazidou E, Kyriacou P. Methodology for rapid assessment of blood lithium levels in ultramicro volumes of blood plasma for applications in personal monitoring of patients with bipolar mood disorder. *J Biomed Optic.* (2018) 23:107004. doi: 10.1117/1.JBO.23.10.107004
  47. Young W. Review of lithium effects on brain and blood. *Cell Transplant.* (2009) 18:951–75. doi: 10.3727/096368909X471251
  48. Johnson JH, Crookshank HR, Smalley HE. Lithium toxicity in cattle. *Vet Hum Toxicol.* (1980) 22:248–51.
  49. Ommati MM, Heidari R, Zamiri MJ, Sabouri S, Zaker L, Farshad O, et al. The footprints of oxidative stress and mitochondrial impairment in arsenic trioxide-induced testosterone release suppression in pubertal and mature F1-male Balb/c mice via the downregulation of 3 $\beta$ -HSD, 17 $\beta$ -HSD, and CYP11a expression. *Biol Trace Elem Res.* (2019) 195:125–34. doi: 10.1007/s12011-019-01815-2
  50. Yu Y, Han Y, Niu R, Wang J, Manthari RK, Ommati MM, Sun Z. Ameliorative effect of VE, IGF-I, and hCG on the fluoride-induced testosterone release suppression in mice Leydig cells. *Biol Trace Elem Res.* (2018) 181:95–103. doi: 10.1007/s12011-017-1023-1
  51. Pursel VG, Johnson LA, Rampacek GB. Acrosome morphology of boar spermatozoa incubated before cold shock. *J Anim Sci.* (1972) 34:278–83. doi: 10.2527/jas1972.342278x
  52. Farshad O, Heidari R, Zamiri MJ, Retana-Márquez S, Khalili M, Ebrahimi M, et al. Spermatotoxic effects of single-walled and multi-walled carbon nanotubes on male mice. *Front Vet Sci.* (2020) 7:591558. doi: 10.3389/fvets.2020.591558
  53. Fonseca JF, Torres CAA, Maffili VV, Borges AM, Santos ADF, Rodrigues MT, Oliveira RFM. The hypoosmotic swelling test in fresh goat spermatozoa. *Animal Reproduct.* (2005) 2:139–44.
  54. Ommati MM, Heidari R, Zamiri MJ, Shojaee S, Akhlaghi A, Sabouri S. Association of open field behavior with blood and semen characteristics in roosters: as an alternative animal model. *Int Androl.* (2017) 16:50–8. doi: 10.1016/j.androl.2017.02.002
  55. Caro AA, Adlong LW, Crocker SJ, Gardner MW, Luikart EF, Gron LU. Effect of garlic-derived organosulfur compounds on mitochondrial function and integrity in isolated mouse liver mitochondria. *Toxicol Lett.* (2012) 214:166–74. doi: 10.1016/j.toxlet.2012.08.017
  56. Niknahad H, Jamshidzadeh A, Heidari R, Hosseini Z, Mobini K, Khodaei F, et al. Paradoxical effect of methimazole on liver mitochondria: *in vitro* and *in vivo*. *Toxicol Lett.* (2016) 259:108–15. doi: 10.1016/j.toxlet.2016.08.003
  57. Heidari R, Niknahad H. The role and study of mitochondrial impairment and oxidative stress in cholestasis. In: Vinken M, editor. *Experimental Cholestasis Research*. New York, NY: Springer New York (2019). doi: 10.1007/978-1-4939-9420-5\_8
  58. Ommati MM, Farshad O, Mousavi K, Khalili M, Jamshidzadeh A, Heidari R. Chlorogenic acid supplementation improves skeletal muscle mitochondrial function in a rat model of resistance training. *Biologia.* (2020) 75:1221–30. doi: 10.2478/s11756-020-00429-7
  59. Mohammadi H, Sayad A, Mohammadi M, Niknahad H, Heidari R. N-acetyl cysteine treatment preserves mitochondrial indices of functionality in the brain of hyperammonemic mice. *Clin Exp Hepatol.* (2020) 6:106. doi: 10.5114/ceh.2020.95814
  60. Shafiekhani M, Ommati MM, Azarpira N, Heidari R, Salarian AA. Glycine supplementation mitigates lead-induced renal injury in mice. *J Exp Pharmacol.* (2019) 11:15–22. doi: 10.2147/JEP.S190846
  61. Ommati MM, Shi X, Li H, Zamiri MJ, Farshad O, Jamshidzadeh A, et al. The mechanisms of arsenic-induced ovotoxicity, ultrastructural alterations, and autophagic related paths: an enduring developmental study in folliculogenesis of mice. *Ecotoxicol Environ Saf.* (2020) 204:110973. doi: 10.1016/j.ecoenv.2020.110973
  62. Ommati MM, Farshad O, Ghanbarinejad V, Mohammadi HR, Khadijeh M, Negar A, et al. The nephroprotective role of carnosine against ifosfamide-induced renal injury and electrolytes imbalance is mediated via the regulation of mitochondrial function and alleviation of oxidative stress. *Drug Res.* (2020) 70:49–56. doi: 10.1055/a-1017-5085
  63. Ommati MM, Tanideh N, Rezakhaniha B, Wang J, Sabouri S, Vahedi M, et al. Is immunosuppression, induced by neonatal thymectomy, compatible with poor reproductive performance in adult male rats? *Andrology.* (2018) 6:199–213. doi: 10.1111/andr.12448
  64. Heidari R, Mohammadi H, Ghanbarinejad V, Ahmadi A, Ommati MM, Niknahad H, et al. Proline supplementation mitigates the early stage of liver injury in bile duct ligated rats. *J Basic Clin Physiol Pharmacol.* (2018) 30:91–101. doi: 10.1515/jbcp-2017-0221
  65. Vazin A, Heidari R, Khodami Z. Curcumin supplementation alleviates polymyxin E-induced nephrotoxicity. *J Exp Pharmacol.* (2020) 12:129–36. doi: 10.2147/JEP.S255861
  66. Heidari R, Mousavi K, Amin S, Ommati MM, Niknahad H. N-acetylcysteine treatment protects intestinal mitochondria in a surgical stress model. *Trend Pharm Sci.* (2020) 6:87–96. doi: 10.30476/tips.2020.85960.1042
  67. Jamshidzadeh A, Niknahad H, Heidari R, Zarei M, Ommati MM, Khodaei F. Carnosine protects brain mitochondria under hyperammonemic conditions:

- relevance to hepatic encephalopathy treatment. *PharmaNutrition*. (2017) 5:58–63. doi: 10.1016/j.phanu.2017.02.004
68. Heidari R, Mandegani L, Ghanbarinejad V, Siavashpour A, Ommati MM, Azarpira N, et al. Mitochondrial dysfunction as a mechanism involved in the pathogenesis of cirrhosis-associated cholemic nephropathy. *Biomed Pharmacother*. (2019) 109:271–80. doi: 10.1016/j.biopha.2018.10.104
  69. Ommati MM, Farshad O, Mousavi K, Jamshidzadeh A, Azmoon M, Heidari S, et al. Betaine supplementation mitigates intestinal damage and decreases serum bacterial endotoxin in cirrhotic rats. *PharmaNutrition*. (2020) 12:100179. doi: 10.1016/j.phanu.2020.100179
  70. Heidari R, Jamshidzadeh A, Ommati MM, Rashidi E, Khodaei F, Sadeghi A, et al. Ammonia-induced mitochondrial impairment is intensified by manganese co-exposure: relevance to the management of subclinical hepatic encephalopathy and cirrhosis-associated brain injury. *Clin Exp Hepatol*. (2019) 5:109–17. doi: 10.5114/ceh.2019.85071
  71. Ommati MM, Mohammadi H, Mousavi K, Azarpira N, Farshad O, Dehghani R, et al. Metformin alleviates cholestasis-associated nephropathy through regulating oxidative stress and mitochondrial function. *Liver Res*. (in press). doi: 10.1016/j.livres.2020.12.001
  72. Farshad O, Ommati MM, Yüzügülen J, Jamshidzadeh A, Mousavi K, Ahmadi Z, et al. Carnosine mitigates biomarkers of oxidative stress, improves mitochondrial function, and alleviates histopathological alterations in the renal tissue of cholestatic rats. *Pharm Sci*. (2020). doi: 10.34172/PS.2020.60
  73. Katalinic V, Modun D, Music I, Boban M. Gender differences in antioxidant capacity of rat tissues determined by 2,2'-azinobis (3-ethylbenzothiazoline 6-sulfonate; ABTS) and ferric reducing antioxidant power (FRAP) assays. *Comp Biochem Physiol A: Physiol*. (2005) 140:47–52. doi: 10.1016/j.cca.2005.01.005
  74. Mousavi K, Niknahad H, Ghalamfarsa A, Mohammadi H, Azarpira N, Ommati MM, Heidari R. Taurine mitigates cirrhosis-associated heart injury through mitochondrial-dependent and antioxidative mechanisms. *Clin Exp Hepatol*. (2020) 6:207–19. doi: 10.5114/ceh.2020.99513
  75. Heidari R, Moezi L, Asadi B, Ommati MM, Azarpira N. Hepatoprotective effect of boldine in a bile duct ligated rat model of cholestasis/cirrhosis. *PharmaNutrition*. (2017) 5:109–17. doi: 10.1016/j.phanu.2017.07.001
  76. Heidari R, Ghanbarinejad V, Mohammadi H, Ahmadi A, Esfandiari A, Azarpira N, Niknahad H. Dithiothreitol supplementation mitigates hepatic and renal injury in bile duct ligated mice: potential application in the treatment of cholestasis-associated complications. *Biomed Pharmacother*. (2018) 99:1022–32. doi: 10.1016/j.biopha.2018.01.018
  77. Heidari R, Jamshidzadeh A, Niknahad H, Safari F, Azizi H, Abdoli N, et al. The hepatoprotection provided by taurine and glycine against antineoplastic drugs induced liver injury in an *ex vivo* model of normothermic recirculating isolated perfused rat liver. *Trend Pharm Sci*. (2016) 2:59–76.
  78. Heidari R, Ahmadi A, Mohammadi H, Ommati MM, Azarpira N, Niknahad H. Mitochondrial dysfunction and oxidative stress are involved in the mechanism of methotrexate-induced renal injury and electrolytes imbalance. *Biomed Pharmacother*. (2018) 107:834–40. doi: 10.1016/j.biopha.2018.08.050
  79. Ommati MM, Jamshidzadeh A, Niknahad H, Mohammadi H, Sabouri S, Heidari R, Abdoli N. N-acetylcysteine treatment blunts liver failure-associated impairment of locomotor activity. *PharmaNutrition*. (2017) 5:141–7. doi: 10.1016/j.phanu.2017.10.003
  80. Ommati MM, Farshad O, Mousavi K, Taghavi R, Farajvajari S, Azarpira N, et al. Agmatine alleviates hepatic and renal injury in a rat model of obstructive jaundice. *PharmaNutrition*. (2020) 13:100212. doi: 10.1016/j.phanu.2020.100212
  81. Heidari R, Niknahad H, Jamshidzadeh A, Azarpira N, Bazyari M, Najibi A. Carbonyl traps as potential protective agents against methimazole-induced liver injury. *J Biochem Mol Toxicol*. (2015) 29:173–81. doi: 10.1002/jbt.21682
  82. Niknahad H, Jamshidzadeh A, Heidari R, Abdoli N, Ommati MM, Jafari F, et al. The postulated hepatotoxic metabolite of methimazole causes mitochondrial dysfunction and energy metabolism disturbances in liver. *Pharm Sci*. (2016) 22:217–26. doi: 10.15171/PS.2016.35
  83. Jamshidzadeh A, Heidari R, Abasvali M, Zarei M, Ommati MM, Abdoli N, et al. Taurine treatment preserves brain and liver mitochondrial function in a rat model of fulminant hepatic failure and hyperammonemia. *Biomed Pharmacother*. (2017) 86:514–20. doi: 10.1016/j.biopha.2016.11.095
  84. Ommati MM, Farshad O, Azarpira N, Shafaghath M, Niknahad H, Heidari R. Betaine alleviates cholestasis-associated renal injury by mitigating oxidative stress and enhancing mitochondrial function. *Biologia*. (2020) 76:351–65. doi: 10.2478/s11756-020-00576-x
  85. Heidari R, Ahmadi A, Ommati MM, Niknahad H. Methylene blue improves mitochondrial function in the liver of cholestatic rats. *Trend Pharm Sci*. (2020) 6:73–86. doi: 10.30476/tips.2020.85961.1043
  86. Ahmadi N, Ghanbarinejad V, Ommati MM, Jamshidzadeh A, Heidari R. Taurine prevents mitochondrial membrane permeabilization and swelling upon interaction with manganese: implication in the treatment of cirrhosis-associated central nervous system complications. *J Biochem Mol Toxicol*. (2018) 32:e22216. doi: 10.1002/jbt.22216
  87. Niknahad AM, Ommati MM, Farshad O, Moezi L, Heidari R. Manganese-induced nephrotoxicity is mediated through oxidative stress and mitochondrial impairment. *J Renal Hepatic Disord*. (2020) 4:1–10. doi: 10.15586/jrenhep.2020.66
  88. Emadi E, Abdoli N, Ghanbarinejad V, Mohammadi HR, Mousavi Mobarakeh K, Azarpira N, et al. The potential role of mitochondrial impairment in the pathogenesis of imatinib-induced renal injury. *Heliyon*. (2019) 5:e01996. doi: 10.1016/j.heliyon.2019.e01996
  89. Seifi K, Rezaei M, Yansari AT, Riazi GH, Zamiri MJ, Heidari R. Saturated fatty acids may ameliorate environmental heat stress in broiler birds by affecting mitochondrial energetics and related genes. *J Therm Biol*. (2018) 78:1–9. doi: 10.1016/j.jtherbio.2018.08.018
  90. Farshad O, Ommati MM, Ozugulen J, Alizadeh S, Mousavi K, Azarpira N, et al. Skeletal muscle mitochondrial impairment in cirrhosis-induced sarcopenia. *Trend Pharm Sci*. (2020) 6:189–204. doi: 10.30476/tips.2020.87789.1067
  91. Chen Y, King D, Wang W, Ding Y, Du L. Development of an ion-pair HPLC method for investigation of energy charge changes in cerebral ischemia of mice and hypoxia of Neuro-2a cell line. *Biomed Chromatogr*. (2007) 21:628–34. doi: 10.1002/bmc.798
  92. Abdoli N, Sadeghian I, Mousavi K, Azarpira N, Ommati MM, Heidari R. Suppression of cirrhosis-related renal injury by N-acetyl cysteine. *Curr Res Pharmacol Drug Discov*. (2020) 1:30–8. doi: 10.1016/j.crphar.2020.100006
  93. Siavashpour A, Khalvati B, Azarpira N, Mohammadi H, Niknahad H, Heidari R. Poly (ADP-Ribose) polymerase-1 (PARP-1) overactivity plays a pathogenic role in bile acids-induced nephrotoxicity in cholestatic rats. *Toxicol Lett*. (2020) 330:144–58. doi: 10.1016/j.toxlet.2020.05.012
  94. Ommati MM, Farshad O, Jamshidzadeh A, Heidari R. Taurine enhances skeletal muscle mitochondrial function in a rat model of resistance training. *PharmaNutrition*. (2019) 9:100161. doi: 10.1016/j.phanu.2019.100161
  95. Eftekhari A, Heidari R, Ahmadian E, Eghbal MA. Cytoprotective properties of carnosine against isoniazid-induced toxicity in primary cultured rat hepatocytes. *Pharm Sci*. (2018) 24:257–63. doi: 10.15171/PS.2018.38
  96. Heidari R, Ommati MM, Alahyari S, Azarpira N, Niknahad H. Amino acid-containing Krebs-Henseleit buffer protects rat liver in a long-term organ perfusion model. *Pharmaceut Sci*. (2018) 24:168–79. doi: 10.15171/PS.2018.25
  97. Niknahad H, Heidari R, Mohammadzadeh R, Ommati MM, Khodaei F, Azarpira N, et al. Sulfasalazine induces mitochondrial dysfunction and renal injury. *Ren Fail*. (2017) 39:745–53. doi: 10.1080/0886022X.2017.1399908
  98. Blank ML, O'Neill PJ, Steigman CK, Cobb LM, Wilde RA, Havenstein PJ, Chaudry IH. Reperfusion injury following testicular torsion and detorsion in prepubertal rats. *Urol Res*. (1993) 21:389–93. doi: 10.1007/BF00300074
  99. Kianifard D, Sadrkhanlou R-A, Hasanzadeh S. The histological, histomorphometrical and histochemical changes of testicular tissue in the metformin treated and untreated streptozotocin-induced adult diabetic rats. (2012).
  100. Ommati MM, Heidari R, Manthari RK, Tikka Chiranjeevi S, Niu R, Sun Z, et al. Paternal exposure to arsenic resulted in oxidative stress, autophagy, and mitochondrial impairments in the HPG axis of pubertal male offspring. *Chemosphere*. (2019) 236:124325. doi: 10.1016/j.chemosphere.2019.07.056
  101. Haredy SA, Imam TS, Ahmed-Farid OA. Combination of Ficus carica leaves extract and ubiquinone in a chronic model of lithium induce reproductive toxicity in rats: hindrance of oxidative stress and apoptotic marker of sperm cell degradation. *J Pharm Biolog Sci*. (2017) 12:64–73. doi: 10.9790/3008-1202026473

102. Quinn P Payne A. Steroid product-induced, oxygen-mediated damage of microsomal cytochrome P-450 enzymes in leydig cell cultures: relationship to desensitization. *J Biol Chem.* (1985) 260:2092–9.
103. Eskandari MR, Fard JK, Hosseini MJ Pourahmad J. Glutathione mediated reductive activation and mitochondrial dysfunction play key roles in lithium induced oxidative stress and cytotoxicity in liver. *BioMetals.* (2012) 25:863–73. doi: 10.1007/s10534-012-9552-8
104. Folgerø T, Bertheussen K, Lindal S, Torbergsen T Oian P. Mitochondrial disease and reduced sperm motility. *Hum Reprod.* (1993) 8:1863–8. doi: 10.1093/oxfordjournals.humrep.a137950
105. Ben Saad A, Dalel B, Rjeibi I, Smida A, Ncib S, Zouari N Zourgui L. Phytochemical, antioxidant and protective effect of cactus cladodes extract against lithium-induced liver injury in rats. *Pharm Biol.* (2017) 55:516–25. doi: 10.1080/13880209.2016.1255976
106. Ommati MM, Heidari R, Ghanbarinejad V, Aminian A, Abdoli N Niknahad H. The neuroprotective properties of carnosine in a mouse model of manganism is mediated via mitochondria regulating and antioxidative mechanisms. *Nutr Neurosci.* (2019) 23:731–43. doi: 10.1080/1028415X.2018.1552399
107. Ghanbarinejad V, Ahmadi A, Niknahad H, Ommati MM Heidari R. Carnosine mitigates manganese mtotoxicity in an in vitro model of isolated brain mitochondria. *Adv Pharm Bull.* (2019) 9:294–301. doi: 10.15171/apb.2019.034
108. Heidari R, Ghanbarinejad V, Mohammadi H, Ahmadi A, Ommati MM, Abdoli N, et al. Mitochondria protection as a mechanism underlying the hepatoprotective effects of glycine in cholestatic mice. *Biomed Pharmacother.* (2018) 97:1086–95. doi: 10.1016/j.biopha.2017.10.166
109. Mohammadi H, Ommati MM, Farshad O, Jamshidzadeh A, Nikbakht MR, Niknahad H Heidari R. Taurine and isolated mitochondria: a concentration-response study. *Trend Pharm Sci.* (2019) 5:197–206. doi: 10.30476/tips.2020.84851.1037

**Conflict of Interest:** The authors declare that the research was conducted in the absence of any commercial or financial relationships that could be construed as a potential conflict of interest.

Copyright © 2021 Ommati, Arabnezhad, Farshad, Jamshidzadeh, Niknahad, Retana-Marquez, Jia, Nateghahmadi, Mousavi, Arazi, Azmoon, Azarpira and Heidari. This is an open-access article distributed under the terms of the Creative Commons Attribution License (CC BY). The use, distribution or reproduction in other forums is permitted, provided the original author(s) and the copyright owner(s) are credited and that the original publication in this journal is cited, in accordance with accepted academic practice. No use, distribution or reproduction is permitted which does not comply with these terms.