

Research Article

A Broad Learning System to Predict the 28-Day Mortality of Patients Hospitalized with Community-Acquired Pneumonia: A Case-Control Study

Jing Yuan ¹, Xin Liu ², Wen-Feng Wang ³, and Jing-Jing Zhang³

¹Department of Infectious Diseases, Chifeng Municipal Hospital, Chifeng Clinical Medical School of Inner Mongolia Medical University, Chifeng 024000, China

²Department of Neurosurgery, Chifeng Municipal Hospital, Chifeng Clinical Medical School of Inner Mongolia Medical University, Chifeng 024000, China

³School of Science, Shanghai Institute of Technology, Shanghai 201418, China

Correspondence should be addressed to Jing Yuan; yy402293690@126.com

Received 3 August 2021; Revised 20 January 2022; Accepted 31 January 2022; Published 4 March 2022

Academic Editor: Kwang Gi Kim

Copyright © 2022 Jing Yuan et al. This is an open access article distributed under the Creative Commons Attribution License, which permits unrestricted use, distribution, and reproduction in any medium, provided the original work is properly cited.

This study was to conduct a model based on the broad learning system (BLS) for predicting the 28-day mortality of patients hospitalized with community-acquired pneumonia (CAP). A total of 1,210 eligible CAP cases from Chifeng Municipal Hospital were finally included in this retrospective case-control study. Random forest (RF) and an eXtreme Gradient Boosting (XGB) models were used to develop the prediction models. The data features extracted from BLS are utilized in RF and XGB models to predict the 28-day mortality of CAP patients, which established two integrated models BLS-RF and BLS-XGB. Our results showed the integrated model BLS-XGB as an efficient broad learning system (BLS) for predicting the death risk of patients, which not only performed better than the two basic models but also performed better than the integrated model BLS-RF and two well-known deep learning systems-deep neural network (DNN) and convolutional neural network (CNN). In conclusion, BLS-XGB may be recommended as an efficient model for predicting the 28-day mortality of CAP patients after hospital admission.

1. Introduction

Pneumonia is the most common respiratory disease [1]. Before the advent of antibiotics, pneumonia was one major killer to the human health [2]. With the advances in modern medicine, many pneumonia patients have been cured with antibiotics and adjuvant therapy, but the mortality rate remains high among the very young, the elderly, and those with compromised immune functions [3]. After the initial triage of patients with pneumonia, it is critical for emergency medical staff to assess whether these patients require hospitalization [4]. Unnecessary hospitalizations not only increase the risk of acquired infections but also drain health care resources [5]. Several pneumonia severity scales may be used to assess the severity of a patient's illness, but these scales are mainly used in the inpatients and are not suitable for emer-

gency patients [6]. Community-acquired pneumonia (CAP) is a common infectious disease of respiratory system [7]. A deep insight into the potential factors influencing the quality of antibiotic use is essentially necessary to develop effective and targeted interventions to improve care for patients with CAP [8]. Accurate disease assessment is of great value for the initial treatment, clinical stability, and long-term prognosis [9]. Biomarkers are immune cells and immune proteins that are significantly increased in the process of microbial immunity and have auxiliary diagnostic value in the evaluation of CAP [10].

Nowadays, artificial intelligence is already used to solve emergent problems for medical engineering and particularly, for predicting CAP [11]. In order to avoid the devastating effects of the CAP on the patients' daily lives and healthcare systems and to control the further spread of this virus, we

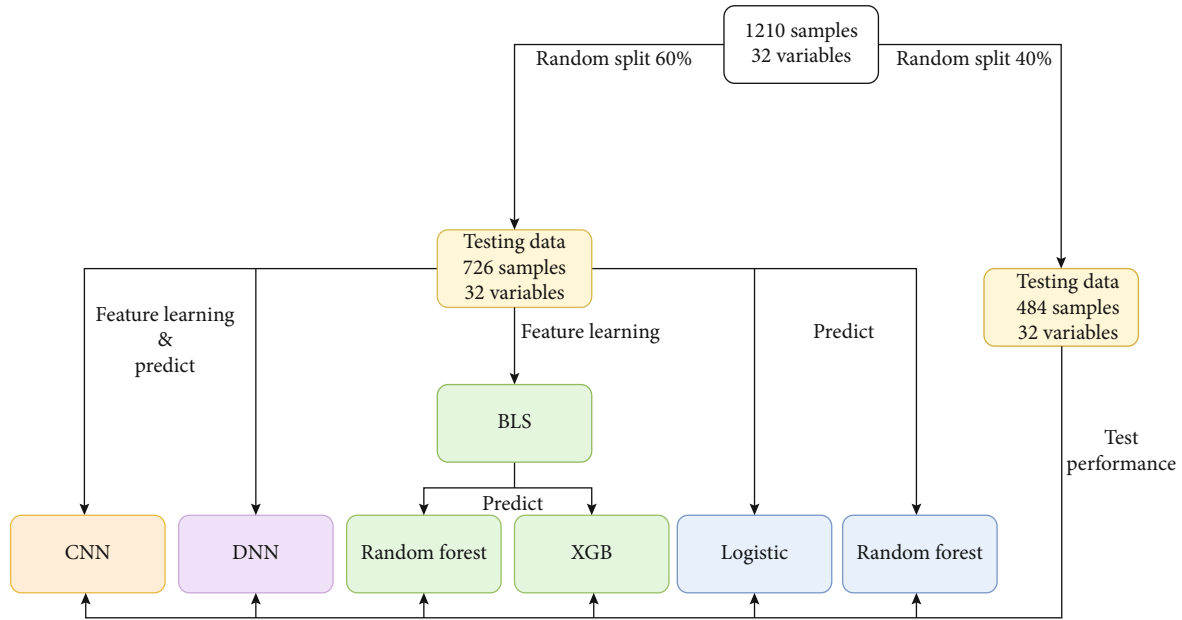


FIGURE 1: Establishment and validation of the prediction models for the 28-day mortality of CAP patients.

not only need to make an effective early diagnosis of infected patients through effective screening but also need to predict the risk of death in CAP patients [12, 13]. A series of models and algorithms were proposed to search for optimal hidden-layer architectures, connectivity, and training parameters for deep learning systems for predicting the CAP risk among patients with respiratory complaints, but the efficiency of these models and algorithms in predicting the death risk of patients hospitalized with CAP needs a further investigation, and meanwhile, novel approaches are quite necessary [14, 15].

Our objectives in the present studies are (1) to develop an efficient model based on the previous models and algorithms for predicting the risk of the 28-day mortality in patients hospitalized with CAP, using the random forest (RF) and eXtreme Gradient Boosting (XGB) models [16]; (2) to utilize the broad learning system (BLS) extract the features and evaluate the importance of BLS features in predicting the 28-day mortality of patients [17]; and (3) to compare the performance of the proposed model with two well-known deep learning systems—deep neural network (DNN) and convolutional neural network (CNN).

2. Materials and Methods

2.1. Study Design and Population. This was a retrospective case-control study. The information of a total of 1,397 CAP patients was collected from the Chifeng Municipal Hospital between August 2019 and December 2020. After excluding cases with age < 18 years ($n = 58$), having recently received chemotherapy ($n = 24$), advanced liver disease ($n = 67$), and the serum creatinine level > 1.5 mg/dl ($n = 38$), 1,210 eligible patients were finally included in this study. This study was approved by the Institutional Review Board (IRB) of Chifeng Municipal Hospital (approval number: no. 2019_24).

The inclusion criteria were as follows: (1) age ≥ 18 years old, (2) patients diagnosed with CAP according to Chinese Guidelines for Diagnosis and Treatment of Adult Community-acquired Pneumonia, and (3) available information of 28-day mortality or survival after hospital admission.

The exclusion criteria were (1) patients who have recently received chemotherapy, corticosteroids, or other immunosuppressants; (2) exposure to antibiotics within 14 days before entering the group; (3) patients with advanced liver disease; (4) being undergoing hemodialysis; (5) patients with serum creatinine level > 1.5 mg/dl; (6) patients with severe infection; and (7) patients with immune dysfunction.

2.2. Data Collection. The demographic and clinical information of CAP patients were collected, including gender, age, nationality, history of diseases (allergy, hypertension, diabetes, lung disease malignant tumor, heart failure (HF)), history of surgery, smoking, drinking, systolic blood pressure (SBP), diastolic blood pressure (DBP), respiratory rate, heart rate (HR), white blood cell (WBC) counts, red blood cell (RBC) counts, hemoglobin (Hb) level, platelet (PLT) counts, aspartate aminotransferase (AST) level, serum albumin (ALB) level, blood urea nitrogen (BUN) level, creatinine (Cr) level, blood glucose (Glu) level, porcine calcitonin (PCT) level, and C-reactive protein (CRP) level. The outcome was the 28-day mortality of patients hospitalized with CAP.

2.3. Establishment and Validation of the Prediction Models. All CAP patients were randomly grouped into the training and testing sets with a ratio of 6 : 4. The balance test was carried out between the two sets. Six prediction models were conducted using the training set (Figure 1). The logistic regression, RF, DNN, and CNN analyses were used to establish four models to predict the risk of 28-day mortality in

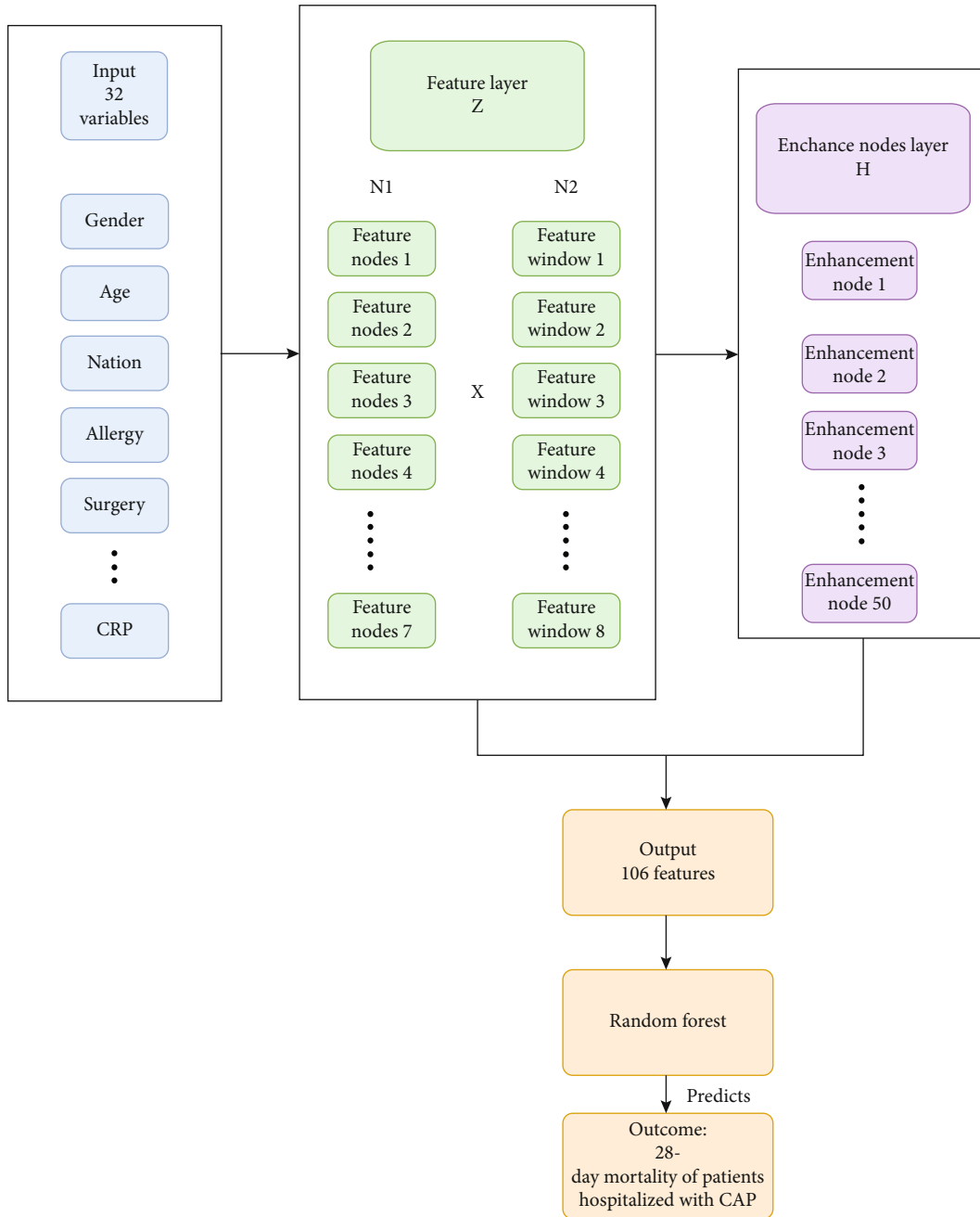
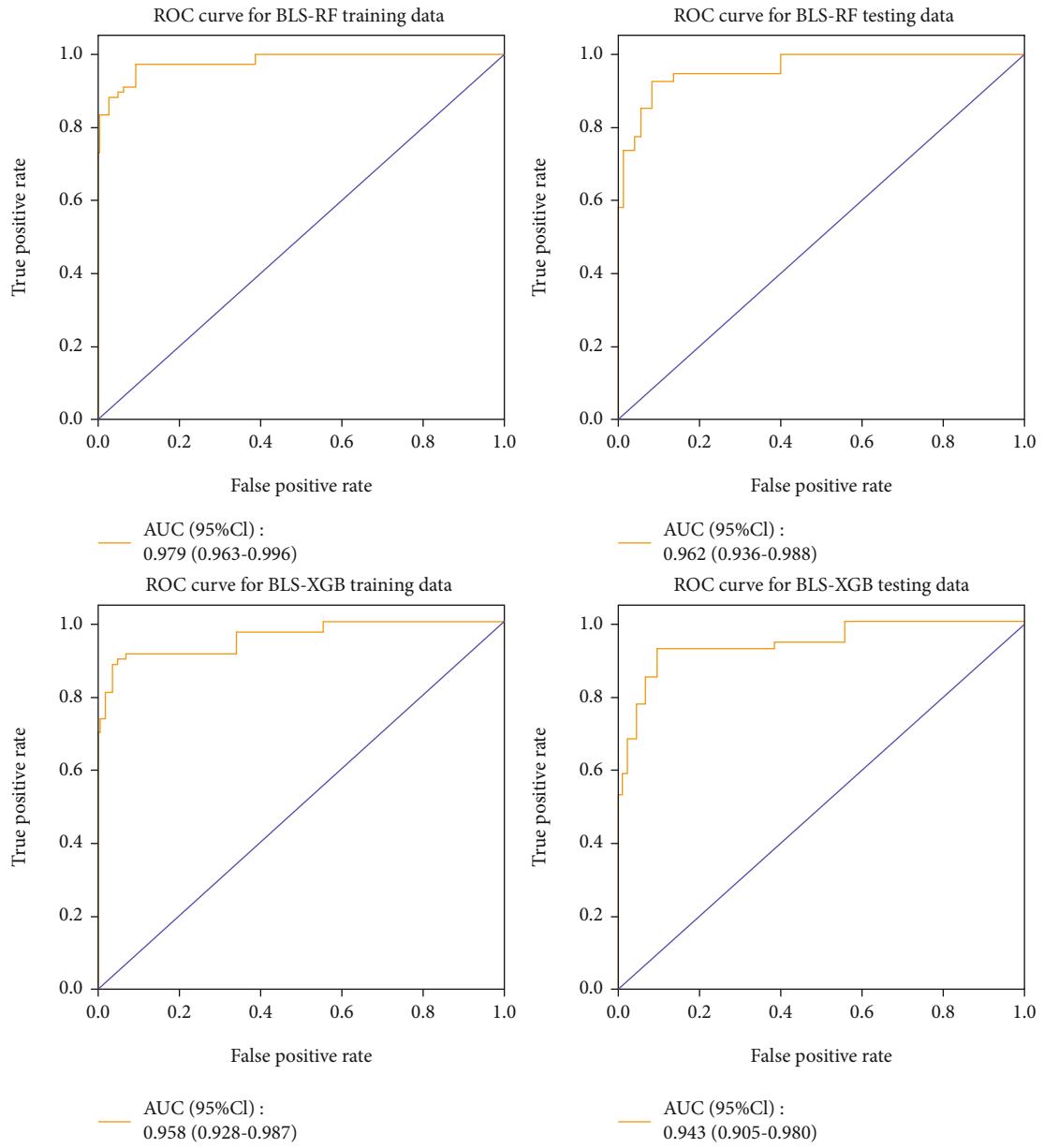


FIGURE 2: Establishment of the BLS-RF model for predicting the 28-day mortality of CAP patients.

patients hospitalized with CAP, respectively. All study variables entered the BLS to generate 106 features. Then, the two models (BLS-RF and BLS-XGB) based on the 106 features were established using RF and XGB analyses, respectively. Figure 2 displayed the establishment of the BLS-RF model. The area under the curve (AUC), accuracy, sensitivity, specificity, positive predict value (PPV), and negative predict value (NPV) evaluated the predictive performance of the six models. Internal validation of the six prediction models was conducted using the testing set. Receiver operating characteristic (ROC) curves of the BLS-RF, BLS-XGB, CNN, and DNN models for predicting the 28-day mortality of CAP patients were shown in Figure 3.

DNN consists of three layers, input layer, hidden layer, and output layer. Each layer is fully connected. Using the original data as the input layer, the sample features are obtained progressively through the hidden layer, and then the features in the output layer are predicted. For deep learning processes, 30 hidden layers are used.

CNN's full name is convolutional neural network, which includes three convolutional layer for feature extraction and max pooling layer for down sampling. And Fully Connected Layer for classification²Features are extracted by the convolutional layer, useless features are excluded by the pooling layer, and finally features in the output layer are classified and predicted by the full connection layer. In this study, four



(a)

FIGURE 3: Continued.

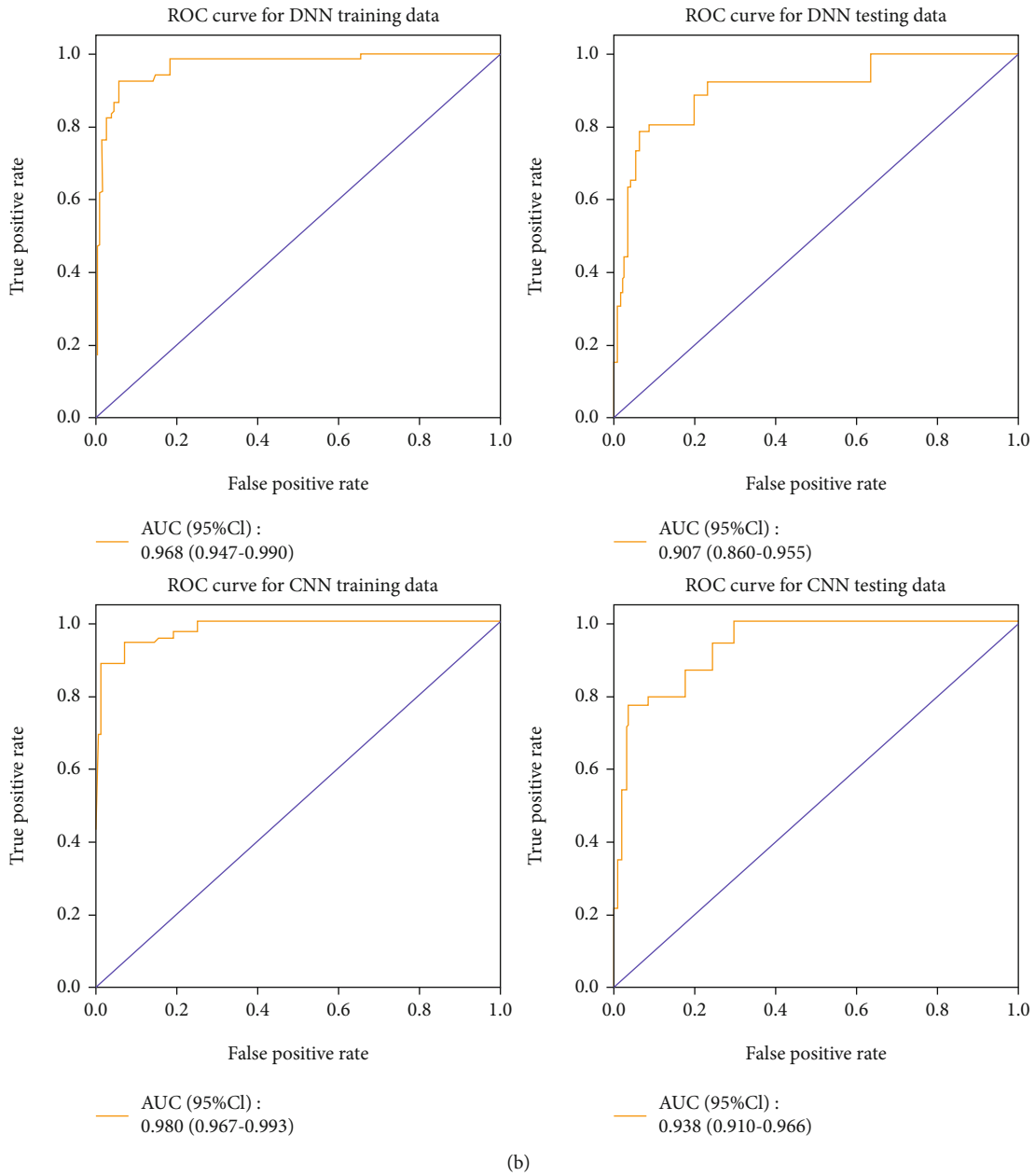


FIGURE 3: (a) ROC curves based on the integrated models. (b) ROC curves based on CNN and DNN.

convolutional layers, one pooling layer, and one full connection layer are adopted.

2.4. Statistical Analysis. The normality test for measurement data was assessed by Shapiro test. The continuous variables with normal distribution were analyzed using T test and expressed by mean \pm standard deviation (Mean \pm SD). Non-normally distributed measurement data were analyzed by Mann-Whitney U test and represented by median and quartile ($M[Q1, Q3]$). Categorical data were evaluated utilizing χ^2 test or Fisher's exact probability method, with the number of cases and the composition ratio ($N(\%)$). All missing data were filled by random forest analysis. The sen-

sitivity analysis was carried out. All statistical analyses were performed using Python software. $P < 0.05$ was considered as a statistical difference.

3. Results and Discussion

3.1. Characteristics of Patients Hospitalized with CAP. A total of 1,210 eligible CAP patients were finally included in this study, with the mean age of 63.58 ± 15.36 years. Of which, 120 cases suffered from death during hospitalization. All patients were randomly grouped into the training ($n = 726$) and testing ($n = 484$) sets according to 6:4. There were no differences in gender, age, nationality, history of diseases (allergy, hypertension, diabetes, lung disease malignant

TABLE 1: The characteristics of patients hospitalized with CAP.

Variables	Total ($n = 1210$)	Testing ($n = 484$)	Training ($n = 726$)	Statistics	P
Gender (female), n (%)	475 (39.26)	185 (38.22)	290 (39.94)	$\chi^2 = 0.361$	0.548
Age, years, mean \pm SD	63.58 \pm 15.36	63.86 \pm 15.20	63.40 \pm 15.48	$t = 0.51$	0.612
Nationality (Han), n (%)	1060 (87.60)	431 (89.05)	629 (86.64)	$\chi^2 = 1.554$	0.213
Allergy (yes), n (%)	110 (9.09)	46 (9.50)	64 (8.82)	$\chi^2 = 0.167$	0.683
Surgery (yes), n (%)	325 (26.86)	140 (28.93)	185 (25.48)	$\chi^2 = 1.753$	0.186
Hypertension (yes), n (%)	480 (39.67)	205 (42.36)	275 (37.88)	$\chi^2 = 2.432$	0.119
Diabetes (yes), n (%)	140 (11.57)	52 (10.74)	88 (12.12)	$\chi^2 = 0.538$	0.463
Smoking (yes), n (%)	395 (32.64)	171 (35.33)	224 (30.85)	$\chi^2 = 2.647$	0.104
Drinking (yes), n (%)	315 (26.03)	129 (26.65)	186 (25.62)	$\chi^2 = 0.161$	0.688
Lung disease (yes), n (%)	160 (13.22)	74 (15.29)	86 (11.85)	$\chi^2 = 3.001$	0.083
Malignant autumn, n (%)	50 (4.13)	23 (4.75)	27 (3.72)	$\chi^2 = 0.782$	0.376
HF (yes), n (%)	35 (2.89)	15 (3.10)	20 (2.75)	$\chi^2 = 0.123$	0.726
SBP, mmHg, mean \pm SD	129.71 \pm 20.07	129.50 \pm 20.01	129.84 \pm 20.11	$t = -0.29$	0.772
DBP, mmHg, mean \pm SD	80.70 \pm 13.24	80.68 \pm 13.12	80.71 \pm 13.33	$t = -0.04$	0.972
Respiratory rate, beats/minute, mean \pm SD	20.81 \pm 2.43	20.85 \pm 2.52	20.77 \pm 2.38	$t = 0.55$	0.579
HR, beats/minute, mean \pm SD	89.56 \pm 18.13	89.59 \pm 18.90	89.54 \pm 17.61	$t = 0.04$	0.966
WBC counts, $10^9/L$, $M(Q_1, Q_3)$	8.23 (6.31, 11.81)	8.46 (6.33, 11.50)	8.14 (6.26, 12.02)	$Z = 0.579$	0.562
RBC counts, $10^{12}/L$, mean \pm SD	4.29 \pm 0.73	4.31 \pm 0.70	4.28 \pm 0.74	$t = 0.74$	0.459
Hb, g/L, mean \pm SD	128.09 \pm 21.78	128.98 \pm 21.11	127.50 \pm 22.22	$t = 1.16$	0.246
PLT counts, $10^9/L$, $M(Q_1, Q_3)$	244.55 (193.00, 320.30)	244.55 (195.40, 328.00)	244.55 (190.00, 314.00)	$Z = 1.013$	0.311
AST, μ/L , $M(Q_1, Q_3)$	21.61 (16.00, 33.00)	21.00 (16.00, 32.00)	22.00 (16.00, 34.00)	$Z = -0.433$	0.665
ALB, μ/L , mean \pm SD	35.48 \pm 5.84	35.67 \pm 5.99	35.35 \pm 5.74	$t = 0.93$	0.350
BUN, mmol/L, $M(Q_1, Q_3)$	5.30 (4.10, 7.30)	5.35 (4.10, 7.30)	5.20 (4.10, 7.26)	$Z = 0.561$	0.575
Cr, $\mu\text{mol}/L$, mean \pm SD	64.16 \pm 20.92	63.28 \pm 20.90	64.75 \pm 20.93	$t = -1.19$	0.233
Glu, mmol/L, $M(Q_1, Q_3)$	5.90 (5.00, 7.26)	5.80 (4.99, 7.17)	5.99 (5.00, 7.30)	$Z = -1.203$	0.229
PCT, $\mu\text{g}/L$, $M(Q_1, Q_3)$	0.10 (0.05, 0.34)	0.10 (0.06, 0.31)	0.10 (0.05, 0.36)	$Z = -0.343$	0.732
CRP, mg/L, $M(Q_1, Q_3)$	50.20 (11.90, 114.00)	43.00 (11.50, 108.00)	54.15 (12.20, 115.00)	$Z = -1.073$	0.283
Survival state, n (%)				$\chi^2 = 0.617$	0.432
Survival	1090 (90.08)	432 (89.26)	658 (90.63)		
Death	120 (9.92)	52 (10.74)	68 (9.37)		

CAP: community-acquired pneumonia; SBP: systolic blood pressure; DBP: diastolic blood pressure; HR: heart rate; WBC: white blood cell; RBC: red blood cell; Hb: hemoglobin; PLT: platelet; AST: aspartate aminotransferase; ALB: albumin; BUN: blood urea nitrogen; Cr: creatinine; Glu: blood glucose; PCT: porcine calcitonin; CRP: C-reactive protein.

tumor, and HF), history of surgery, smoking, drinking, SBP, DBP, respiratory rate, HR, WBC counts, RBC counts, Hb level, PLT counts, AST level, ALB level, BUN level, Cr level, Glu level, PCT level, and CRP level (all $P > 0.05$). It was indicated that the data was balanced between the two sets. The characteristics of CAP patients in the training and testing sets were shown in Table 1.

3.2. The Predictive Performance of the Models for the 28-Day Mortality of CAP Patients. The AUC values of the BLS-RF model for predicting the 28-day mortality of CAP patients were 0.979 (95% CI: 0.963-0.996) and 0.962 (95% CI:

0.936-0.988) in the training and testing sets, respectively. The AUC values of the BLS-XGB model were 0.958 (95% CI: 0.928-0.988) and 0.943 (95% CI: 0.905-0.980) in the training and testing sets, respectively. The AUC of DNN used in training set is 0.968 (95% CI: 0.947-0.990), and the AUC in test set is 0.907 (95% CI: 0.860-0.955). The AUC of CNN in training set was 0.980 (95% CI: 0.967-0.993), and AUC in testing set was 0.938 (95% CI: 0.910-0.966). Using the basic prediction model, the AUC of RF in the training set is 0.900 (95% CI: 0.861-0.939), and the AUC in the testing set is 0.786 (95% CI: 0.727-0.846). The AUC of logistic model was 0.832 (95% CI: 0.785-0.879) in training

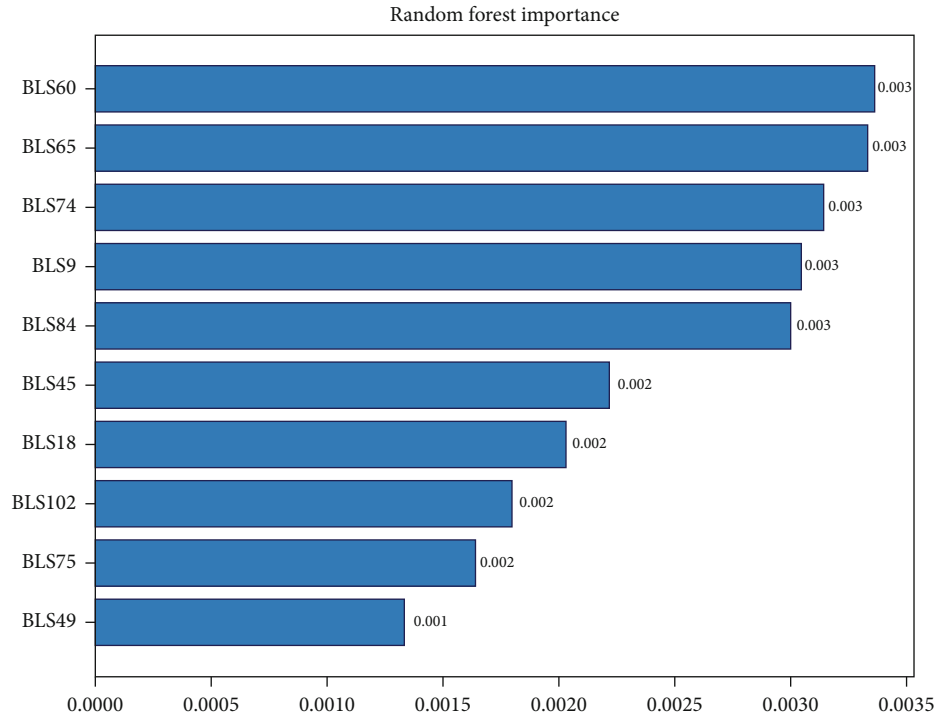


FIGURE 4: Importance of model features.

set and 0.714 (95% CI: 0.649-0.780) in testing set. Finally, BLS is used to learn and output features, and random forest prediction is used, as shown in Figures 3 and 4.

From the AUC, we can find that the AUC of the two training models based on BLS is similar in the testing set ($P = 0.414$). However, there was no significant difference between the AUC of DNN and CNN in the testing set ($P = 0.270$). There is no significant difference between the AUC of the two basic prediction models Logistic and Random Forest in the testing set ($P = 0.371$). The AUC of the testing set of BLS-based stochastic forest model is better than that of DNN ($P = 0.047$). The AUC of integrated models in the testing set not only is better than those of basic model RF and logistic in the testing set.

3.3. Importance Diagram of the BLS-Based Features. As stated in Section 2, BLS is used to learn and output features, and random forest prediction is used. Among the BLS output features, the features with the highest feature importance are the 60th, 65, 74, 9, 84, 45, 18, 102, 75, and 49 among the top 10 features with the highest model importance, BLS60 is the most important, followed by BLS65, BLS49 is the lowest, see details in Figure 4.

Machine learning analysis with text representation has been utilized in some previous studies, such as early detection of readmission risk for decision support based on clinical notes, discovering the predictive value of clinical notes, deep learning approaches in chest radiograph, and deep learning techniques on chest X-ray and CT scan [18, 19]. But a further investigation on applications in predicting the death risk of CAP among hospitalized patients with respiratory com-

plaints is still required, and a novel approach to improve the model performance is also quite necessary [20–23].

3.4. Comparison for the Prediction Models. The accuracy, sensitivity, specificity, PPV, and NPV of the two prediction models are established by using BLS to learn and output features, which is a brain-inspired model [24]. And then using the random forest and XGB to extract features from BLS is the highest among all models. Hence, two integrated models BLS-RF and BLS-XGB are established. The sensitivity and NPV of the BLS – RF model using the training set are 0.970 (95% CI: 0.929-1.000) and 0.997 (95% CI: 0.992-1.000), and those using the testing set are 0.925 (95% CI: 0.853-0.996) and 0.989 (95% CI: 0.979-1.000), respectively. In the training set the accuracy specificity, and PPV of the BLS-XGB model are 0.959 (95% CI: 0.944-0.973), 0.967 (95% CI: 0.953-0.980), and 0.728 (95% CI: 0.632-0.825), respectively. In the testing set, the accuracy, specificity, and PPV of the BLS-XGB model are 0.932 (95% CI: 0.909-0.954), 0.958 (95% CI: 0.939-0.977), and 0.679 (95% CI: 0.565-0.801), as shown in Figure 5.

In Section 3.2, we utilized the BLS to construct better hidden-layer architectures and connectivity to extract the data features, and in this section, we further trained parameters in the integrated broad learning system and compare the efficiency of the integrated models with previous algorithms by performance in predicting the death risk of patients with acquired pneumonia after 28-day hospitalization.

As shown in Table 2, experimental results show that the integrated model BLS-XGB (training accuracy = 95.9%, testing accuracy = 93.2%) as an efficient BLS for predicting

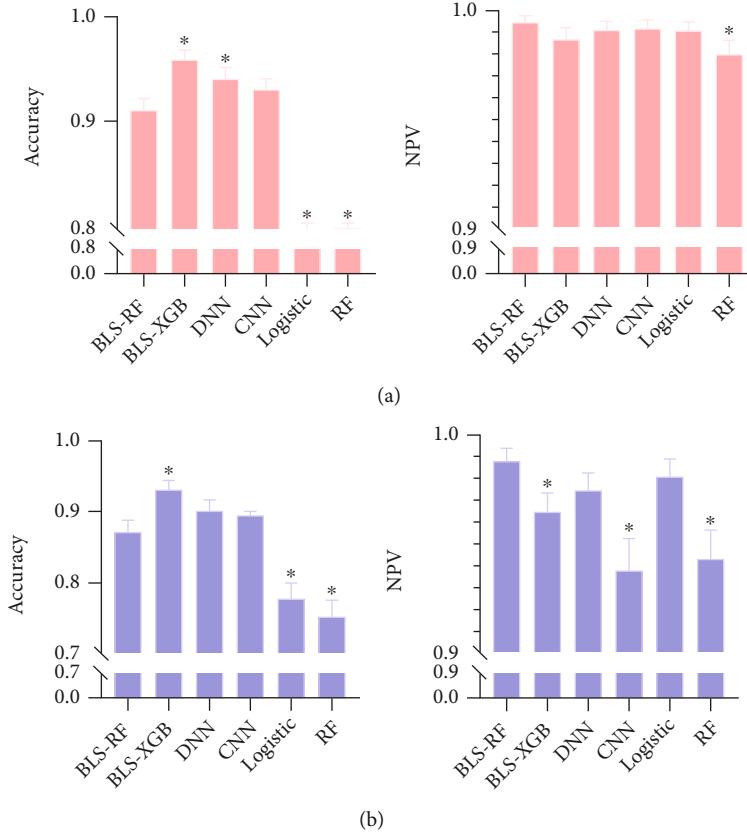


FIGURE 5: Bar graphs of accuracy and NPV of the models on the training (a) and testing (b) set.

TABLE 2: The predictive performance of the models for the 28-day mortality of CAP patients.

Prediction models	Accuracy	Sensitivity	Specificity	PPV	NPV
Training set					
BLS-RF	0.912 (0.891-0.932)	0.970 (0.929-1.000)	0.906 (0.884-0.928)	0.512 (0.425-0.599)	0.997 (0.992-1.000)
BLS-XGB	0.959 (0.944-0.973)	0.881 (0.803-0.958)	0.967 (0.953-0.980)	0.728 (0.632-0.825)	0.988 (0.979-0.996)
DNN	0.941 (0.924-0.958)	0.926 (0.864-0.989)	0.942 (0.924-0.960)	0.624 (0.529-0.718)	0.992 (0.985-0.999)
CNN	0.930 (0.911-0.948)	0.941 (0.885-0.997)	0.929 (0.909-0.948)	0.577 (0.485-0.668)	0.993 (0.987-1.000)
Logistic	0.789 (0.758-0.818)	0.941 (0.885-0.997)	0.774 (0.742-0.806)	0.300 (0.239-0.362)	0.992 (0.985-1.000)
RF	0.791 (0.761-0.820)	0.853 (0.769-0.937)	0.784 (0.753-0.816)	0.290 (0.227-0.353)	0.981 (0.969-0.993)
Testing set					
BLS-RF	0.872 (0.842-0.902)	0.925 (0.853-0.996)	0.865 (0.833-0.898)	0.458 (0.364-0.552)	0.989 (0.979-1.000)
BLS-XGB	0.932 (0.909-0.954)	0.717 (0.596-0.838)	0.958 (0.939-0.977)	0.679 (0.565-0.801)	0.965 (0.948-0.982)
DNN	0.903 (0.877-0.929)	0.808 (0.701-0.915)	0.914 (0.888-0.941)	0.532 (0.422-0.642)	0.975 (0.960-0.990)
CNN	0.897 (0.890-0.924)	0.769 (0.655-0.884)	0.912 (0.885-0.939)	0.513 (0.402-0.624)	0.938 (0.910-0.966)
Logistic	0.779 (0.739-0.815)	0.885 (0.798-0.971)	0.766 (0.726-0.806)	0.313 (0.238-0.388)	0.982 (0.968-0.996)
RF	0.756 (0.718-0.794)	0.615 (0.483-0.748)	0.773 (0.734-0.813)	0.246 (0.172-0.320)	0.944 (0.919-0.968)

CAP: community-acquired pneumonia; BLS: broad learning system; RF: random forest; XGB: eXtreme Gradient Boosting; DNN: deep neural network; CNN: convolutional neural network; PPV: positive predictive value; NPV: negative predictive value.

the death risk of patients, which not only performs better than the two basic models RF (training accuracy = 79.1%, testing accuracy = 75.6%) and the integrated model BLS-RF (training accuracy = 95.9%, testing accuracy = 93.2%) but also performs better than BLS-XGB (training accuracy = 91.2%, testing accuracy = 87.2%) and two well-known deep learning

systems-DNN (training accuracy = 94.1%, testing accuracy = 90.3%) and CNN (training accuracy = 93.0%, testing accuracy = 89.7%), and the competitiveness of the proposed model is further proved. Suggest the integrated model BLS-XGB as an efficient BLS for predicting the death risk of patients.

This study was to develop a prediction model for the risk of the 28-day mortality in patients hospitalized with CAP, which is essentially significant for emergent treating system in intelligent decisions for modern hospitals [24–28]. The potential engineering applications of our proposed model will not be limited to the patients hospitalized with CAP [29–32]. We used RF and XGB methods after learning the sample characteristics of the data by BLS [33–38]. This approach is novel compared to the previous studies on predicting the risk of death among CAP cases [39–43]. Accuracy of the integrated model is more than 90%, indicating a robust prediction. Our model also makes prediction according to various indicators of patients. At the same time, compared with the method of the previous basic models and other competitive models, the integrated model has significantly improved the performance accuracy in practical applications. The unresolved issues are also the main challenges in treating pneumonia is that a patient's condition can deteriorate suddenly, and therefore, the subsequent emergent treatment for saving personal patients needs a further utilization of other methods in medicine and artificial intelligence.

4. Conclusion

BLS offers an alternative way of learning in deep structure and in the present study, after being integrated with XGB, the experiments indicate a robust prediction for control the 28-day mortality risk of CAP patients after hospital admission. The integrated model BLS-XGB was selected as an efficient model to control the 28-day mortality of patients hospitalized with CAP. For subsequent studies, we encourage other researchers to extend potential engineering applications of our proposed model (not be limited to the patients hospitalized with CAP). Another next research priority is to find accompanied methods in medicine and artificial intelligence for the emergent treatment for saving personal patients after the death risk is predicted.

Data Availability

The data utilized to support the findings are available from the corresponding authors upon request.

Conflicts of Interest

The authors declare that they have no competing interests.

Acknowledgments

This research was supported by the Shanghai High-Level Base-Building Project for Industrial Technology Innovation (1021GN204005-A06).

References

- [1] W. Yates, "A review of infectious bovine rhinotracheitis, shipping fever pneumonia and viral-bacterial synergism in respiratory disease of cattle," *Revue canadienne de medecine comparee*, vol. 46, no. 3, pp. 225–263, 1982.
- [2] H. K. Eslamy and B. Newman, "Pneumonia in normal and immunocompromised children: an overview and update," *Radiologic Clinics of North America*, vol. 49, no. 5, pp. 895–920, 2011.
- [3] T. Lancet, "Pleuropneumonia-like organisms in the human vagina," *Annals of Botany*, vol. 109, no. 7, pp. 1263–1275, 2011.
- [4] S. M. Brown, J. P. Jones, D. Aronsky, B. E. Jones, M. J. Lanspa, and N. C. Dean, "Relationships among initial hospital triage, disease progression and mortality in community-acquired pneumonia," *Respirology*, vol. 17, no. 8, pp. 1207–1213, 2012.
- [5] H. Uematsu, K. Yamashita, S. Kunisawa, T. Otsubo, and Y. Imanaka, "Prediction of pneumonia hospitalization in adults using health checkup data," *PLoS One*, vol. 12, no. 6, article e0180159, 2017.
- [6] J. M. Baren, P. L. Henneman, and R. J. Lewis, "Primary varicella in adults: pneumonia, pregnancy, and hospital admission," *Annals of Emergency Medicine*, vol. 28, no. 2, pp. 165–169, 1996.
- [7] J. D. Heffelfinger, S. F. Dowell, J. H. Jorgensen et al., "Management of community-acquired pneumonia in the era of pneumococcal resistance: a report from the drug-resistant Streptococcus pneumoniae therapeutic working group," *Archives of Internal Medicine*, vol. 160, no. 10, pp. 1399–1408, 2000.
- [8] J. A. Schouten, M. E. Hulscher, B. J. Kullberg et al., "Understanding variation in quality of antibiotic use for community-acquired pneumonia: effect of patient, professional and hospital factors," *Journal of Antimicrobial Chemotherapy*, vol. 56, no. 3, pp. 575–582, 2005.
- [9] J. Hedlund, "Community-acquired pneumonia requiring hospitalisation. Factors of importance for the short- and long-term prognosis," *Scandinavian Journal of Infectious Diseases*, vol. 97, no. 97, pp. 1–60, 1995.
- [10] M. Christ-Crain and S. M. Opal, "Clinical review: the role of biomarkers in the diagnosis and management of community-acquired pneumonia," *Critical Care*, vol. 14, no. 1, pp. 203–211, 2010.
- [11] P. S. Heckerling, B. S. Gerber, T. G. Tape, and R. S. Wigton, "Use of genetic algorithms for neural networks to predict community-acquired pneumonia," *Artificial Intelligence in Medicine*, vol. 30, no. 1, pp. 71–84, 2004.
- [12] E. García-Vázquez, S. Soto, J. Gómez, and J. A. Herrero, "Simplificación de los criterios para valorar el riesgo de mortalidad en pacientes con neumonía adquirida en la comunidad," *Medicina Clínica*, vol. 131, no. 6, pp. 201–204, 2008.
- [13] O. Leroy, P. Devos, B. Guery et al., "Simplified prediction rule for prognosis of patients with severe community-acquired pneumonia in ICUs," *Chest*, vol. 116, no. 1, pp. 157–165, 1999.
- [14] S. Singh, "Pneumonia detection using deep learning," in *2021 4th Biennial International Conference on Nascent Technologies in Engineering (ICNTE)*, NaviMumbai, India, 2021.
- [15] D. Hussein, D. M. Ibrahim, N. M. Elshennawy, and A. M. Sarhan, "Deep-chest: multi-classification deep learning model for diagnosing COVID-19, pneumonia, and lung cancer chest diseases," *Computers in Biology and Medicine*, vol. 132, article 104348, 2021.
- [16] L. Akter and N. Akhter, "Ovarian cancer prediction from ovarian cysts based on TVUS using machine learning algorithms," *Proceedings of the International Conference on Big Data, IoT, and Machine Learning*, M. S. Arefin, M. S.

- Kaiser, A. Bandyopadhyay, M. A. R. Ahad, and K. Ray, Eds., Springer, Singapore, 2022.
- [17] C. L. P. Chen and Z. Liu, "Broad learning system: an effective and efficient incremental learning system without the need for deep architecture," *IEEE Transactions on Neural Networks & Learning Systems*, vol. 29, no. 1, pp. 10–24, 2018.
- [18] S. Bellens, P. Vandewalle, and W. Dewulf, "Deep learning based porosity segmentation in X-ray CT measurements of polymer additive manufacturing parts," *Procedia CIRP*, vol. 96, no. 2, pp. 336–341, 2021.
- [19] R. K. Gupta, Y. Sahu, N. Kunhare, A. Gupta, and D. Prakash, "Deep learning-based mathematical model for feature extraction to detect corona virus disease using chest X-ray images," *International Journal of Uncertainty, Fuzziness and Knowledge-Based Systems*, vol. 29, no. 6, pp. 921–947, 2021.
- [20] L. Ryan, S. Mataraso, A. Lynn-Palevsky et al., "371: a machine learning approach to predict deep venous thrombosis among hospitalized patients," *Critical Care Medicine*, vol. 49, no. 1, pp. 175–175, 2021.
- [21] P. A. Koul and G. Investigators, "Aspiration risk factors, microbiology, and empiric antibiotics for patients hospitalized with community-acquired pneumonia," *Chest*, vol. 159, no. 1, pp. 58–72, 2021.
- [22] L. Ryan, S. Mataraso, A. Siefkas et al., "A machine learning approach to predict deep venous thrombosis among hospitalized patients," *Clinical and Applied Thrombosis/Hemostasis*, vol. 27, no. 23, 2021.
- [23] C. L. Wu, M. J. Wu, L. C. Chen et al., "AEP-DLA: adverse event prediction in hospitalized adult patients using deep learning algorithms," *IEEE Access*, vol. 9, pp. 55673–55689, 2021.
- [24] W. F. Wang, X. Y. Deng, L. Ding, and L. Zhang, "Brain-inspired intelligence and visual perception: the brain and machine eyes," Springer, 2020.
- [25] I. Eigner and F. Bodendorf, "An intelligent decision support system for readmission prediction in healthcare," *Information Technology*, vol. 60, no. 4, pp. 195–205, 2018.
- [26] R. Summers and E. R. Carson, "Evaluation of intelligent decision aids for application in critical care medicine," in *Proceedings of the Annual International Conference of the IEEE Engineering in Medicine and Biology Society Volume 13: 1991*, Orlando, FL, USA, 1991.
- [27] R. M. Meneghini, "Resource reallocation during the COVID-19 pandemic in a suburban hospital system: implications for outpatient hip and knee arthroplasty," *The Journal of Arthroplasty*, vol. 35, no. 7, pp. S15–S18, 2020.
- [28] E. Kalantar, A. Kurd, K. Kabir, P. Afrogh, S. Mohammadi, and M. H. Naseh, "Extreme antibiotic resistant acinetobacter baumannii-related pneumonia in a regional hospital," *Infection Epidemiology and Medicine*, vol. 2, no. 4, pp. 29–31, 2016.
- [29] M. A. Dimopoulos, E. Terpos, M. Boccadoro et al., "Daratumumab plus pomalidomide and dexamethasone versus pomalidomide and dexamethasone alone in previously treated multiple myeloma (APOLLO): an open-label, randomised, phase 3 trial," *The Lancet Oncology*, vol. 22, no. 6, pp. 801–812, 2021.
- [30] R. J. Tarpey and M. T. Mullarkey, "Engineering innovative clinical resource management by design: a guided emergent search through a complex adaptive system of systems," *IEEE Transactions on Engineering Management*, pp. 1–15, 2021.
- [31] Y. M. Sakti and R. N. Khadafi, "Emergent spine surgery during COVID-19 pandemic: 10 months experience in Dr. Sardjito general hospital, Indonesia a case series," *Annals of Medicine and Surgery*, vol. 67, no. 18, article 102513, 2021.
- [32] S. Rajendiran, S. Thahir, Y. Veloo et al., "Environmental surface sampling of SARS-CoV-2 in selected hospitals in Malaysia," *Tropical Biomedicine*, vol. 38, no. 3, pp. 462–468, 2021.
- [33] P. V. Opia and R. R. Corpuz, "Suitability mapping of small farm reservoirs using K-nearest neighbors and random forest algorithms," *International Journal of Scientific & Technology Research*, vol. 10, no. 3, pp. 78–80, 2021.
- [34] P. Shanmugam, J. Raja, and R. Pitchai, "An automatic recognition of glaucoma in fundus images using deep learning and random forest classifier," *Applied Soft Computing*, vol. 109, no. 6, article 107512, 2021.
- [35] W. P. Zhao, J. Li, J. Zhao, D. Zhao, J. Lu, and X. Wang, "XGB model: research on evaporation duct height prediction based on XGBoost algorithm," *Radioengineering*, vol. 29, no. 1, pp. 81–93, 2020.
- [36] W. B. Chang, Y. L. Liu, X. Y. Wu, Y. Xiao, S. Zhou, and W. Cao, "A new hybrid XGBSVM model: application for hypertensive heart disease," *IEEE Access*, vol. 7, pp. 175248–175258, 2019.
- [37] C. Chen and Z. Liu, "Broad Learning System: A New Learning Paradigm and System without Going Deep," in *2017 32nd Youth Academic Annual Conference of Chinese Association of Automation (YAC)*, Hefei, China, 2017.
- [38] W. F. Wang, H. J. Cai, X. Y. Deng, C. Lu, and L. Zhang, *Interdisciplinary evolution of the machine brain*, Springer, 2021.
- [39] T. T. Bauer, S. Ewig, R. Marre, N. Suttorp, T. Welte, and THE CAPNETZ STUDY GROUP, "CRB-65 predicts death from community-acquired pneumonia," *Journal of Internal Medicine*, vol. 260, no. 1, pp. 93–101, 2006.
- [40] S. Kruger, S. Ewig, R. Marre et al., "Procalcitonin predicts patients at low risk of death from community-acquired pneumonia across all CRB-65 classes," *European Respiratory Journal*, vol. 31, no. 2, pp. 349–355, 2008.
- [41] N. Kokturk, A. Kanbay, N. Bukan, and N. Ekim, "The value of serum procalcitonin in differential diagnosis of pulmonary embolism and community-acquired pneumonia," *Clinical & Applied Thrombosis/Hemostasis*, vol. 17, no. 5, pp. 519–525, 2011.
- [42] N. Daneman, D. E. Low, A. McGeer, K. A. Green, and D. N. Fisman, "At the threshold: defining clinically meaningful resistance thresholds for antibiotic choice in community-acquired pneumonia," *Clinical Infectious Diseases*, vol. 46, no. 8, pp. 1131–1138, 2008.
- [43] J. Gamble, D. T. Eurich, T. J. Marrie, and S. R. Majumdar, "Admission hypoglycaemia portends a substantially increased risk of mortality in patients with community-acquired pneumonia: population-based cohort study," *Canadian Journal of Diabetes*, vol. 33, no. 3, pp. 185–185, 2009.