

Journal section: Oral Medicine and Pathology
 Publication Types: Research

doi:10.4317/jced.53957
<http://dx.doi.org/10.4317/jced.53957>

Comparative study of the osteogenic potential of mesenchymal stem cells derived from different sources

Iman M. Aboushady ¹, Zeinab A. Salem ¹, Dina Sabry ², Abbas Mohamed ³

¹ MD, MS, Lecturer of oral biology, Department of Oral Biology, Faculty of Oral and Dental Medicine, Cairo University

² MD, MS, Professor of Medical Biochemistry and Molecular Biology, Department of Medical biochemistry and molecular biology, Faculty of medicine, Cairo University

³ MD, MS, Lecturer of Medical Biochemistry and Molecular Biology, Department of Medical biochemistry and molecular biology, Faculty of medicine, Cairo University

Correspondence:

Department of Medical biochemistry and molecular biology
 Faculty of medicine, Cairo University
 Kasr Alaini Street
 Box 11451
dinasabry@kasralainy.edu.eg

Aboushady IM, Salem ZA, Sabry D, Mohamed A. Comparative study of the osteogenic potential of mesenchymal stem cells derived from different sources. J Clin Exp Dent. 2018;10(1):e7-13.
<http://www.medicinaoral.com/odo/volumenes/v10i1/jcedv10i1p7.pdf>

Received: 19/04/2017
 Accepted: 23/10/2017

Article Number: 53957 <http://www.medicinaoral.com/odo/indice.htm>
 © Medicina Oral S. L. C.I.F. B 96689336 - eISSN: 1989-5488
 eMail: jced@jced.es
Indexed in:
 Pubmed
 Pubmed Central® (PMC)
 Scopus
 DOI® System

Abstract

Background: Mesenchymal stem cells (MSCs) can regenerate missing tissues and treat diseases. Hence, the current work aimed to compare the proliferation rate and the osteogenic differentiation potential of bone marrow MSCs (BMSCs), gingival MSCs (GMSCs) and submandibular MSCs (SMSCs).

Material and Methods: MSCs derived from bone marrow, gingiva and submandibular salivary gland were isolated and cultured from rats. The proliferation capacity was judged by MTT proliferation Assay. Osteogenic differentiation was assessed by Alizarin red stain and quantitative RT-PCR was performed for Runx-2 and MMP-13.

Results: The highest significant proliferation was estimated in the BMSCs compared to GMSCs and SMSCs (p -value was < 0.01). All studied cell types formed mineralized nodules as stained with Alizarin Red stain at the 3rd passage of differentiation. However, BMSCs seemed to generate the highest level of mineralization compared to GMSCs and SMSCs. RT-PCR revealed that the expression of Runx-2 and MMP-13 mRNAs was significantly increased in the BMSCs compared to GMSCs and SMSCs (p -value was < 0.01).

Conclusions: BMSCs displayed maximum osteogenesis results followed by the GMSCs and lastly by the SGSCs. Thus, it could be recommended that GMSCs can be used as a second choice after BMSCs when bone tissue reconstruction is needed.

Key words: Mesenchymal stem cells, osteogenic differentiation, Runx-2, MMP-13.

Introduction

Mesenchymal stem cells (MSCs) are the most promising stem cells for clinical applications; they were originally found in the bone marrow, and have also been isolated from many other tissues as skin, adipose tissue and va-

rious dental tissues (1,2). Human bone marrow MSCs from the bone marrow (BMSCs) were distinguished as multipotent stem cells by signifying their separation, growth in culture and directed differentiation to osteogenic, adipogenic and chondrogenic lineages (3). Stem

cell plasticity was clarified by the capability of MSCs to differentiate into lineages that are not typical mesenchymal derivatives (4).

Regarding dental originated sources, gingival MSCs (GMSCs) comprise more interesting alternatives to the other dental MSCs as they are much easier to get from the clinically resected gingival tissues. Therefore, it is of great concern to prove the multiple differentiation potentials of GMSCs for possible tissue engineering applications (5). GMSCs have an obvious osteogenic potential. GMSCs from all biopsies were successfully isolated, characterized and expanded to clinically significant numbers ($>1.9 \times 10^7$ cells) in 3–5 passages. Multi-lineage, including osteogenic, differentiation in standard culture was confirmed by staining assays and gene expression (6). The salivary glands derived from the endoderm and consist of acinar and ductal epithelial cells. Salivary gland stem/progenitor cells (SMSCs) were isolated from the rat submandibular glands and investigated that the cells are rapidly proliferative and express acinar, ductal and myoepithelial cell lineage markers (7). We investigated and compared the proliferation rate and the osteogenic differentiation potential of different adult mesenchymal stems from rat bone marrow, gingival and salivary glands.

Material and Methods

-Ethical Statement

All experiments will be conducted in the animal house of the Faculty of Medicine, Cairo University, Egypt according to the recommendations and approval of the Ethics Committee on animal's experimentation of the Faculty of Oral and Dental Medicine, Cairo University.

-Experimental procedures

A total of six rats were used in the current study in order to obtain the bone marrow, gingival samples and the submandibular salivary gland samples.

All animals will be euthanized by intracardiac overdose of sodium thiopental.

-Bone marrow mesenchymal stem cells

Bone marrow cells were flushed from tibia and fibula with phosphate-buffered saline (PBS) containing 2 mM EDTA. Over 15 ml Ficoll-Paque (Gibco-Invitrogen), 35 ml of the diluted sample was carefully layered, centrifuged for 35 minutes at 400xg rpm and the upper layer was aspirated leaving undisturbed mononuclear cell (MNC) layer at the interphase. This MNC layer was aspirated, washed twice in PBS containing 2 mM EDTA and centrifuged for 10 minutes at 200xg rpm at 10 °C. The cell pellet was re-suspended in a final volume of 300 µl of buffer. Isolated MSCs were cultured on 25 ml culture flasks in minimal essential medium (MEM) supplemented with 15% fetal bovine serum (FBS) and incubated at 37°C and 5% CO₂. Adherent MSCs were maintained in culture media MEM supplemented with 15% FBS, 0.5%

penicillin, and streptomycin at 37°C in 5% CO₂ incubator for 10-14 days until reaching 70-80% confluence (8). Cultures confluence was monitored by inverted microscope software image analysis and a digital camera was used for capturing images.

-Gingival mesenchymal stem cells

Gingival tissues were dissected from. Gingival stem cells were isolated by enzymatic digestion with Collagenase II (Sigma-Aldrich) and incubated for 2 hours at 37°C (9). Cells were plated in 25 ml culture flasks and proliferated in minimal essential medium (MEM) (Gibco-Life Technologies) supplemented with 15% fetal bovine serum (FBS), 1× Pen/Strep antibiotics (Invitrogen) and incubated at 37°C and 5% CO₂. Cell Culture media were changed twice a week; with supplementation of L-Ascorbic Acid 2-Phosphate (50 µg/mL; Sigma-Aldrich) and they were monitored for 70 to 80% confluence by using inverted microscope software.

-Salivary mesenchymal stem cells

Primary salispheres were cultured as published previously (10). In brief, cell suspensions were prepared first by mechanical disruption with sterile scissor followed by enzymatic digestion with collagenase II (0.63 mg/ml; Gibco). After washing thoroughly, cell suspensions were resuspended in DMEM/F12 medium containing 1× Pen/Strep antibiotics (Invitrogen), EGF (20 ng/ml; Sigma-Aldrich), FGF2 (20 ng/ml; Sigma-Aldrich), insulin (10 µg/ml; Sigma-Aldrich), and dexamethasone (1 µM; Sigma-Aldrich), at a density of 400,000 cells per well of a 12-well plate. Cell culture media was changed twice a week, until they reached 70 to 80% of confluence. Inverted microscope software image analysis was used to assess vitality and confluence of cultured cells.

-MTT proliferation Assay

The MTT Reagent and Detergent Solution were obtained from TACSTM TREVIGEN® supplied ready for use. Cells (103-105) were cultured in 100 µl of culture medium in a flat-bottomed 96 well plate (tissue culture grade). The MTT reagent and detergent reagent were added to each well. The absorbance in each well was measured at a range from 490 to 630 nm using an enzyme-linked immunosorbent assay plate reader (Dynatech MRX 5000; Dynex).

-Osteogenic differentiation

At three passage of subcultures, 2×10^3 of BMSCs, 2×10^3 GMSCs and 2×10^3 of SMSCs were plated in each well of a flat-bottom 24-well plate with 1 mL of culture medium. Osteogenic differentiation and mineralization was initiated 24h after plating by replacing culture medium with DMEM supplemented with 10% FBS, 100 nM dexamethasone, 50 µg/mL ascorbic acid-2-phosphate. For mineralization, 10 mM β-glycerophosphate was added to osteogenic medium. Staining with Alzarin red was applied to each culture to assess BMSCs, GMSCs and SMSCs differentiation into osteoblasts (11).

-Quantitative real time PCR

All studied cells were collected and subjected to RNA extraction using Qiagene cells/tissue extraction kit (Qia-gene) according to manufacture instructions. The mRNA expression level was quantified by qRT-PCR. 1000 ng of the total RNA from each sample were used for cDNA synthesis by reverse transcription using High capacity cDNA Reverse Transcriptase kit (Applied Biosystem). The cDNA was subsequently amplified with the Syber Green I PCR Master Kit (Fermentas) in a 48-well plate using the Step One instrument (Applied Biosystem) as follows: 10 minutes at 95 °C for enzyme activation followed by 40 cycles of 15 seconds at 95°C, 20 seconds at 55 °C and 30 seconds at 72 °C for the amplification step. We used 1 µM of both primers specific for each selected gene including Runt-related transcription factor-2, matrix metalloproteinase-13 (RUNX-2, MMP-13) and GAPDH. Primers sequence specific for each gene was demonstrated in table 1. Changes in the expression of each target gene were normalized relative to the mean critical threshold (CT) values of GAPDH housekeeping gene by the $\Delta\Delta C_t$ method.

-Statistical analysis

Data were statistically described in terms of mean \pm standard deviation (\pm SD), median and range, or frequencies (number of cases) and percentages when appropriate.

Comparison of numerical variables between the study groups was done using Kruskal Wallis test with post hoc multiple 2-group comparisons. *P* values less than 0.05 was considered statistically significant. All statistical calculations were done using computer program SPSS (Statistical Package for the Social Science; SPSS Inc., release 15 for Microsoft Windows 2006).

Results

-Isolation and Culture of BMSCs, GMSCs and SMSCs
No differences were observed in the morphological characteristics of BMSCs, GMSCs and SMSCs at one and two weeks of culture. All the three groups achieved the spindle fusiform shaped like cells in morphology.

-MTT proliferation Assay

Measuring the MTT color absorbance among the three studied groups revealed that the highest significant proliferation was observed at two weeks culture in BMSCs (2.416 \pm 0.744), followed by GMSCs (1.281 \pm 0.577) and finally SMSCs (0.226 \pm 0.0225) (Table 2). At 7&14 days culture there was a statistically highly significant difference between all the studied groups as the *p*-value was < 0.01.

-Osteogenic differentiation

Osteogenic differentiation and mineralization were evidenced by calcium deposits which formed orange red fa-

Table 1: Primers sequence specific for each studied gene.

Gene	Primer sequence: 5' - 3' F=forward and R=reverse	Gene bank accession number
Runx-2	F: GTTATGAAAACCAAGTAGCCAGGT R: GTAATCTGACTCTGTCCTTGTGGAT	NM009820
MMP-13	F: TGCGGTTCACTTTGAGGACA R: TCTTCTATGAGGCGGGGATA	M60616.1
GAPDH	F: ACAGTCCATGCCATCACTGCC R: GCCTGCTTACCACCTTCTTG	NG009348.3

Table 2: Proliferation rate in the different studied groups (mean \pm SD).

Proliferation rate * <i>p</i> values	BM-MSCs	GMSCs	SMSCs
At one week culture:	0.560 \pm 0.095	0.332 \pm 0.1109	0.086 \pm 0.0538
P1		0.004*	
P2			0.001*
P3			0.001*
At two weeks culture:	2.416 \pm 0.744	1.281 \pm 0.577	0.226 \pm 0.0225
P1		0.005*	
P2			0.001*
P3			0.001*

P1: BM-MSCs Vs GMSCs, P2: BM-MSCs Vs SMSCs and P3: GMSCs Vs SM-SCs. * *p* values less than 0.05 was considered statistically significant.

cets around the differentiated cells. BM-MSCs, GMSCs and SMSCs formed mineralized nodules with Alizarin Red stain at the 3rd passage differentiation (Figs. 1-3 respectively). The highest calcium deposits were observed in BM-MSCs compared to GMSCs and SMSCs.

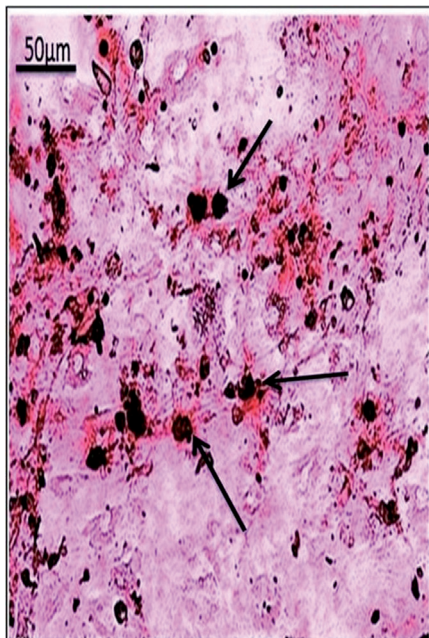


Fig. 1: BM-MSCs at 3rd passage differentiated into osteoblasts and stained with Alzarin red. (arrows showed higher calcium mineralization deposits compared to other groups).

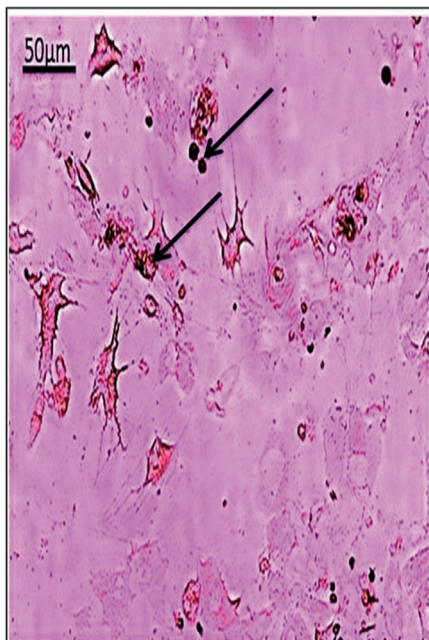


Fig. 2: GMSCs at 3rd passage differentiated into osteoblasts and stained with Alzarin red. (arrows indicating moderate calcium mineralization deposits).

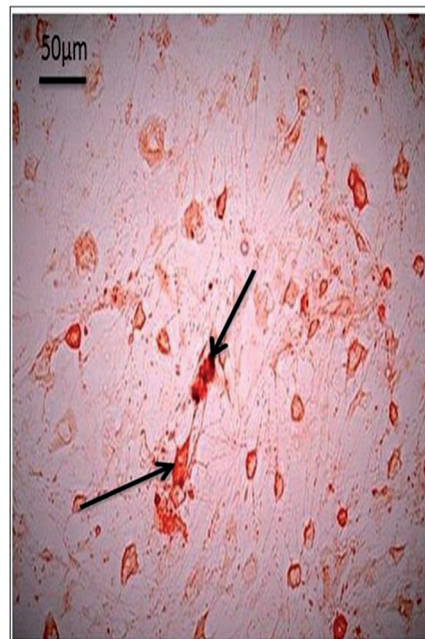


Fig. 3: SMSCs at 3rd passage differentiated into osteoblasts and stained with Alzarin red. (arrows indicating lower calcium mineralization deposits).

-Quantitative RT-PCR results

Quantitative RT-PCR revealed that the expression of Runx-2 and MMP-13 mRNAs was increased in the BM-MSCs followed by the GMSCs group and lastly the SMSCs (Tables 2,3).

Comparing the mean values ± SD for the three studied groups regarding the proliferation results at 7&14 days in culture and PCR results of Runx-2 showed that there was a statistically highly significant difference between the studied groups as the *p*-value was < 0.01; while the PCR results of MMP-13 were statistically not significant as the *p*-value was > 0.05.

On the other hand, 2-groups comparison of the mean values ± SD as regard the proliferation results at 7&14 days culture showed a statistically highly significant difference between each pair of the studied groups as the *p*-value was < 0.01.

Concerning the PCR results of Runx-2; a statistically highly significant difference occurred between the BM-MSCs & GMSCs groups and BM-MSCs & SMSCs groups; while the difference between the GMSCs & SMSCs groups was statistically not significant as the *p*-value was > 0.05. Besides, comparing the PCR results of MMP-13 between each pair of the studied groups revealed a statistically non-significant difference as the *p*-value was > 0.05 (Tables 2,3).

Discussion

Stem cells are expected to provide a novel alternative to regenerate large defects in periodontal tissues and

Table 3: Quantitative RT-PCR results of RUNX-2 and MMP-13 genes expression (mean±SD).

Gene expression * <i>p</i> values	BM-MSCs	GMSCs	SMSCs
Runx-2:	1.609±0.5489	0.468±0.2556 0.004*	0.303±0.0530
P1			0.002*
P2			0.227
P3			
MMP-13:	0.2696±0.25629	0.1554±0.02124	0.1146±0.05679
P1		0.406	0.096
P2			0.180
P3			

P1: BM-MSCs Vs GMSCs, P2: BM-MSCs Vs SMSCs and P3: GMSCs Vs SMSCs. * *p* values less than 0.05 was considered statistically significant.

alveolar bone (12). In the maxillofacial region, adult mesenchymal stem cells (MSCs) have been characterized in several oral and para-oral tissues, which suggests that these tissues could represent rich sources of stem cells, and in turn, could be used as alternatives for other conventional stem cell sources like bone marrow for example. This, in turn, has motivated us to carry out an in vitro study comparing the proliferation rate and osteogenic potential of MSCs obtained from various sources: bone marrow, gingiva and submandibular salivary glands. BMSCs can be easily isolated from the bone marrow of iliac crest by physicians, but the bone marrow aspiration procedure is invasive for the donors. However, the stem cells most commonly used to date for bone regeneration in dental patients are BMSCs obtained from the iliac crest, owing to their great potential for bone regeneration (13). Other stem cells in the oral mucosa have been identified in the lamina propria of the gingiva, which attaches directly to the periosteum of the underlying bone with no intervening submucosa (14). The gingiva overlying the alveolar ridges and the retromolar region is frequently resected during ordinary dental treatments and thus, can often be obtained as a discarded biological sample. GMSCs exhibited clonogenicity, self-renewal and a multipotent differentiation capacity similar to that of BMSCs. However, they proliferate faster than BMSCs, display a stable morphology and don't lose their MSC characteristics with extended passaging (15). The multipotency of GMSCs and their ease of isolation, clinical abundance and rapid in vitro expansion provide a great advantage for this source as a stem cell source for potential clinical applications. Concerning stem cells in adult salivary gland, they are expected to be useful for autologous transplantation therapy in case of tissue engineered-salivary glands or direct cell therapy. SMSC could be directed to differentiate into adipogenic, osteogenic and chondrogenic cells (16). Long-term intake of glucocorticoids would cause osteoporosis and decreased osteoblastic activity which ultimately can result in Cushing's syndrome (17). In addition, dexamethasone when used for a long time would

be toxic to the differentiated osteoblasts, hence, the cells have to be soon harvested and used after full differentiation (18). Osteogenic differentiation media contain dexamethasone, ascorbic acid and β -glycerophosphate (β -GP) was used to support the osteogenic differentiation of mesenchymal stem cells in vitro. However, the exact mechanism by which β -glycerophosphate can induce mineralization remains unclear, but it is believed that alkaline phosphatase can hydrolyze organic phosphate and release inorganic phosphate which in turn can promote mineral deposition on the surface of tissue culture plastic and other materials (19). Organic phosphates are known to aid osteogenesis by starting mineralization in cell cultures and they were suggested to modulate osteoblastic activities by promoting a bone-like mineral phase (20). Mesenchymal stem cells are shown to undergo osteogenic differentiation when they are grown on mineralized surfaces which might be owing to the presence of osteopontin which strongly adsorbs to the charged mineral phases created by presence of β -glycerolphosphate and other organic phosphates (21). Mineralization is not solely affected by the exogenously-added free phosphate groups, but also cell density plays an important role in mineralization. Higher MSCs seeding densities would lead to significantly more mineralization, demonstrating that a certain threshold cell density should be reached before mineralization. Furthermore, cultures that were allowed to concentrate their soluble products in the media produce more mineralized matrix indicating an autocrine or paracrine role of factors synthesized by MSCs which are undergoing osteogenic differentiation (22). Consequently, these results could explain our findings, where the greatest amount of mineralization; as detected by the alizarin red stained nodules, was observed among the BMSCs group as compared to the other two groups, which could be owing to the higher cell density and thus higher mineralization.

Regarding the in vitro MTT proliferation results for the cultured cells; the significant proliferation was noticed among the BMSCs. Maximum proliferation was achieved at 14 days for the three studied groups. A statistica-

lly highly significant difference was noticed among the three studied groups as the p -value was < 0.01 . The core binding factor (Cbfa1) gene, also referred to as runt-related transcription factor-2 (Runx-2), and acute myelogenous leukemia factor (AML-3), encodes a transcription factor that shares homology with the *Drosophila* segmentation gene product Runt (23,24) and plays a key role in osteoblastic differentiation (25). The role of Runx-2 protein in bone formation has been demonstrated in Runx-2 deficient mice which manifest a total absence of osteogenesis (25). In addition, genetic mutations in Runx-2 gene have been associated with multiple skeletal abnormalities in patients with cleidocranial dysplasia syndrome (26). Hence, in the present investigation, the increased expression of Runx-2 among the BMSCs group could suggest more enhanced osteoblastic differentiation in this group. A statistically highly significant difference in the expression of Runx-2 occurred among the three studied groups as the p -value was < 0.01 .

Matrix Metalloproteinase 13 (MMP13, also called collagenase-3) is a member of the large family of matrix metalloproteinases. This is a family of extracellular matrix-degrading enzymes having several common structural features. They are endopeptidases which regulate cell growth, migration, and extracellular matrix remodeling (27).

MMP13 has been considered to have an essential role in bone biology owing to its exclusive presence in the skeleton during development. MMP13 plays an important role in the degradation of components of the extracellular matrix, particularly collagens. It degrades mainly collagen type II, but also collagens type I, III, and X, which are the major components of cartilage and bone (28). MMP13 knockout mice fail to undergo normal ossification with a delay in ossification at the primary centers (29). Because of these findings, MMP13 is considered important in bone formation and remodeling and hence, it was selected in the present work to investigate the osteoblastic differentiation of the studied MSCs. The current PCR results of MMP-13 revealed that its expression was significantly increased among the BMSCs group compared to GMSCs and to SGSCs. However, the differences among the studied three groups were statistically not significant as the p -value was > 0.05 .

According to the obtained results in the current investigation, it could be concluded that MSCs from different sources possess an osteogenic potential as they could be differentiated into osteoblasts and could produce mineralized nodules, when cultured in the proper osteogenic medium. This was supported by alizarin red staining results and by RT-PCR examination for the expression of Runx-2 and MMP-13 genes.

References

1. Fernandes KJ, McKenzie IA, Mill P, Smith KM, Akhavan M, Barnabe-Heider F, et al. A dermal niche for multipotent adult skin-derived precursor cells. *Nat Cell Biol.* 2004;6:1082-93.
2. Egusa H, Iida K, Kobayashi M, Lin TY, Zhu M, Zuk PA, et al. Down regulation of extracellular matrix-related gene clusters during osteogenic differentiation of human bone marrow- and adipose tissue-derived stromal cells. *Tissue Eng.* 2007;13:2589-600.
3. Pittenger MF, Mackay AM, Beck SC, Jaiswal RK, Douglas R, Mosca JD, et al. Multilineage potential of adult human mesenchymal stem cells. *Science.* 1999;284:143-7.
4. Peran M, Marchal JA, Rodriguez-Serrano F, Alvarez P, Aranega A. Trans differentiation: why and how. *Cell Biol Int.* 2011;35:373-9.
5. Gao Y, Zhao G, Li D, Chen X, Pang J, Ke J. Isolation and Multiple Differentiation Potential Assessment of Human Gingival Mesenchymal Stem Cells. *Int J Mol Sci.* 2014;15:20982-96.
6. Shanbhag S, Tomar G, Stavropoulos A, Shanbhag V, Wani M. Osteogenic potential of human gingiva-derived mesenchymal stem cells and 3D bioactive glass scaffolds for bone tissue engineering applications. *Clin Oral Impl Res.* 2014;25 (Suppl. 10).
7. Kishi T, Takao T, Fujita K, Taniguchi H. Clonal proliferation of multi-potent stem/progenitor cells in the neonatal and adult salivary glands. *Biochem Biophys Res Commun.* 2006;340:544-52.
8. Abdel Aziz MT, Atta HM, Mahfouz S, Fouad HH, Roshdy NK, Ahmed HH, et al. Therapeutic potential of bone marrow-derived mesenchymal stem cells on experimental liver fibrosis. *Clin Biochem.* 2007;40:893-9.
9. Taihi I, Nassif A, Berbar T, Isaac J, Berdal A, Gogly B, et al. Validation of Housekeeping Genes to Study Human Gingival Stem Cells and Their In Vitro Osteogenic Differentiation Using Real-Time RT-qPCR. *Stem Cells Int.* 2016;2016:6261490.
10. Lombaert IM, Brunsting JF, Wierenga PK, Faber H, Stokman MA, Kok T, et al. Rescue of salivary gland function after stem cell transplantation in irradiated glands. *PLoS One.* 2008;3:e2063.
11. Kalaszczynska I, Ruminski S, Platek AE, Bissenik I, Zakrzewski P, Noszczyk M, et al. Substantial differences between human and ovine mesenchymal stem cells in response to osteogenic media: how to explain and how to manage? *Biores Open Access.* 2013;2:356-63.
12. Izumi Y, Aoki A, Yamada Y, Kobayashi H, Iwata T, Akizuki T, et al. Current and future periodontal tissue engineering. *Periodontology.* 2000;56:166-87.
13. Derubeis AR, Cancedda R. Bone marrow stromal cells (BMSCs) in bone engineering: limitations and recent advances. *Ann Biomed Eng.* 2004;32:160-5.
14. Zhang Q, Shi S, Liu Y, Uyanne J, Shi Y, Shi S, et al. Mesenchymal Stem Cells Derived from Human Gingiva Are Capable of Immunomodulatory Functions and Ameliorate Inflammation-Related Tissue Destruction in Experimental Colitis. *J Immunol.* 2009; 183:7787-98.
15. Tomar GB, Srivastava RK, Gupta N, Barhanpurkar AP, Pote ST, Jhaveri HM, et al. Human gingiva-derived mesenchymal stem cells are superior to bone marrow-derived mesenchymal stem cells for cell therapy in regenerative medicine. *Biochem Biophys Res Commun.* 2010;393:377-83.
16. Gorjup E, Danner S, Rotter N, Habermann J, Brassat U, Brumendorf TH, et al. Glandular tissue from human pancreas and salivary gland yields similar stem cell populations. *Eur J Cell Biol.* 2009;88:409-21.
17. Sambrook P, Birmingham J, Kempler S, Kelly P, Eberl S, Pocock N, et al. Corticosteroid effects on proximal femur bone loss. *J Bone Miner Res.* 2009;5:1211-6.
18. Falla N, Vlasselaer V, Bierkens I, Borremans B, Schoeters G, van Gorp U. Characterization of a 5-fluorouracil-emitted osteoprogenitor population of the murine bone marrow. *Blood.* 1993;82:3580-91.
19. Chung CH, Golub EE, Forbes E, Tokuka T, Shapiro IM. Mechanism of action of beta-glycerophosphate on bone cell mineralization. *Calcif Tissue Int.* 1992;51:305-11.
20. Tenenbaum HC, Limeback H, McCulloch CA, Mamujee H, Sukhu B, Torontali M. Osteogenic phase-specific co-regulation of collagen synthesis and mineralization by beta-glycerophosphate in chick periosteal cultures. *Bone.* 1992;13:129-138.
21. Gilbert M, Giachelli CM, Stayton PS. Biomimetic peptides that

- engage specific integrin- dependent signaling pathways and bind to calcium phosphate surfaces. *J Biomed Mater Res A*. 2003;67:69-77.
22. Jaiswal N, Haynesworth SE, Caplan AI, Bruder SP. Osteogenic differentiation of purified, culture-expanded human mesenchymal stem cells in vitro. *J Cell Biochem*. 1997;64:295-312.
23. Satake M, Nomura S, Yamaguchi-Iwai Y, Takahama Y, Hashimoto Y, Niki M, et al. Expression of the Runt domain-encoding PEBP2_A genes in T cells during thymic development. *Mol Cell Biol*. 1995;15:1662-70.
24. Stewart M, Terry A, Hu M, O'Hara M, Blyth K, Baxter E, et al. Proviral insertions induce the expression of bone-specific isoforms of PEBP2alphaA (CBFA1): evidence for a new myc collaborating oncogene. *Proc Natl Acad Sci U S A*. 1997;94:8646-51.
25. Komori T, Yagi H, Nomura S, Yamaguchi A, Sasaki K, Deguchi K, et al. Targeted disruption of *Cbfa1* results in a complete lack of bone formation owing to maturational arrest of osteoblasts. *Cell*. 1997;89:755-64.
26. Mundlos S, Otto F, Mundlos C, Mulliken JB, Aylsworth AS, Albright S, et al. Mutations involving the transcription factor CBFA1 cause cleidocranial dysplasia. *Cell*. 1997;89:773-9.
27. Ortega N, Behonick DJ, Werb Z. Matrix remodeling during endochondral ossification. *Trends Cell Biol*. 2004;14:86-93.
28. Knäuper V, Will H, López-Otin C, Smith B, Atkinson SJ, Stanton H, et al. Cellular mechanisms for human procollagenase-3 (MMP-13) activation. Evidence that MT1-MMP (MMP-14) and gelatinase a (MMP-2) are able to generate active enzyme. *J Biol Chem*. 1996;271:17124-31.
29. Inada M, Wang Y, Byrne MH, Rahman MU, Miyaura C, López-Otín C, et al. Critical roles for collagenase-3 (Mmp13) in development of growth plate cartilage and in endochondral ossification. *Proc Natl Acad Sci U S A*. 2004;101:17192-7.

Conflicts of Interest

The authors have declared that no conflict of interest exist.