

Long-Term Exercise Is a Potent Trigger for Δ FosB Induction in the Hippocampus along the dorso–ventral Axis

Takeshi Nishijima*, Masashi Kawakami, Ichiro Kita

Laboratory of Behavioral Physiology, Graduate School of Human Health Sciences, Tokyo Metropolitan University, Tokyo, Japan

Abstract

Physical exercise improves multiple aspects of hippocampal function. In line with the notion that neuronal activity is key to promoting neuronal functions, previous literature has consistently demonstrated that acute bouts of exercise evoke neuronal activation in the hippocampus. Repeated activating stimuli lead to an accumulation of the transcription factor Δ FosB, which mediates long-term neural plasticity. In this study, we tested the hypothesis that long-term voluntary wheel running induces Δ FosB expression in the hippocampus, and examined any potential region-specific effects within the hippocampal subfields along the dorso–ventral axis. Male C57BL/6 mice were housed with or without a running wheel for 4 weeks. Long-term wheel running significantly increased FosB/ Δ FosB immunoreactivity in all hippocampal regions measured (i.e., in the DG, CA1, and CA3 subfields of both the dorsal and ventral hippocampus). Results confirmed that wheel running induced region-specific expression of FosB/ Δ FosB immunoreactivity in the cortex, suggesting that the uniform increase in FosB/ Δ FosB within the hippocampus is not a non-specific consequence of running. Western blot data indicated that the increased hippocampal FosB/ Δ FosB immunoreactivity was primarily due to increased Δ FosB. These results suggest that long-term physical exercise is a potent trigger for Δ FosB induction throughout the entire hippocampus, which would explain why exercise can improve both dorsal and ventral hippocampus-dependent functions. Interestingly, we found that FosB/ Δ FosB expression in the DG was positively correlated with the number of doublecortin-immunoreactive (i.e., immature) neurons. Although the mechanisms by which Δ FosB mediates exercise-induced neurogenesis are still uncertain, these data imply that exercise-induced neurogenesis is at least activity dependent. Taken together, our current results suggest that Δ FosB is a new molecular target involved in regulating exercise-induced hippocampal plasticity.

Citation: Nishijima T, Kawakami M, Kita I (2013) Long-Term Exercise Is a Potent Trigger for Δ FosB Induction in the Hippocampus along the dorso–ventral Axis. PLoS ONE 8(11): e81245. doi:10.1371/journal.pone.0081245

Editor: Gilberto Fisone, Karolinska Inst, Sweden

Received: April 11, 2013; **Accepted:** October 21, 2013; **Published:** November 25, 2013

Copyright: © 2013 Nishijima et al. This is an open-access article distributed under the terms of the Creative Commons Attribution License, which permits unrestricted use, distribution, and reproduction in any medium, provided the original author and source are credited.

Funding: This study was supported by a Grant-in-Aid for Young Scientists from the Ministry of Education, Culture, Sports, Science and Technology of Japan to TN (#23700775). The funders had no role in study design, data collection and analysis, decision to publish, or preparation of the manuscript.

Competing interests: The authors have declared that no competing interests exist.

* E-mail: t-nishijima@tmu.ac.jp

Introduction

Exercise confers diverse benefits on molecular, structural, and functional aspects of the hippocampus in rodents [1,2], some of which were supported by human studies [3,4]. However, the mechanisms underlying the exercise-induced changes in hippocampal plasticity are not sufficiently understood. Previous literature has consistently demonstrated that exercise evokes hippocampal neuronal activation in rodents. Immunohistochemical studies using c-Fos, a marker of transient neuronal activation, have demonstrated that both forced and voluntary running increased c-Fos expression in the dentate gyrus (DG), CA1, and CA3 subfields of the rodent hippocampus [5–7]. In addition, a previous study using laser-Doppler flowmetry (LDF) has demonstrated that mild treadmill running increased regional cerebral blood flow (rCBF), an

alternative marker of neuronal activation, in the CA1 subfield in rat [8]. Immunohistochemical studies enable detailed region-specific analyses after exercise has ceased, while LDF enables real-time monitoring of rCBF in a localized area during exercise. Despite the advantages and limitations of each study, these studies similarly demonstrated an effect of acute bouts of exercise on hippocampal neuronal activity. These results suggest a mechanism whereby long-term regular exercise promotes hippocampal plasticity by repeatedly triggering neuronal activation [9].

The transcription factor Δ FosB, a truncated splice isoform of full-length FosB, is induced by various types of repeated stimuli in specific brain regions, where it gradually accumulates because of its unique stability (a half-life of weeks) [10–12]. A growing body of evidence demonstrates that increased levels of Δ FosB mediate long-lasting neural and behavioral plasticity

associated with particular stimuli [11,13]. For example, chronic administration of drugs of abuse such as cocaine and morphine commonly increases Δ FosB expression in the nucleus accumbens, representing one of the molecular mechanisms underlying increased sensitivity to these drugs [11,14,15]. Similarly to other reward stimuli, including high-fat diet and sexual experience [16,17], long-term voluntary wheel running also increased FosB/ Δ FosB immunoreactivity in rat nucleus accumbens, suggesting that voluntary running is a natural reward for rodents [18,19]. However, to the best of our knowledge, no literature has examined whether repeated exposure to physical exercise induces Δ FosB expression in the hippocampus. Because exercise triggers neuronal activation in the hippocampus, we hypothesized that long-term voluntary wheel running would also induce Δ FosB expression in the hippocampus. While the exact mechanisms by which Δ FosB regulates hippocampal plasticity remain uncertain, studies have demonstrated that mice lacking the *fosB* gene show impaired hippocampal neurogenesis and increased depression-like behavior [20,21]. Indeed, exercise is known to enhance neurogenesis and have antidepressant properties [22–25]. If our hypothesis is correct, Δ FosB would be a new potential molecular target mediating exercise-induced hippocampal plasticity.

The hippocampus has anatomical and functional gradient along its longitudinal (dorso–ventral) axis [26]. The dorsal hippocampus plays a key role in spatial learning and memory [27,28], whereas the ventral hippocampus is preferentially involved in regulating emotional behaviors [29,30]. Furthermore, studies have demonstrated that physiological stimuli induce different patterns of c-Fos expression in the dorsal and ventral portions of the hippocampus [31–33]. Because exercise improves both dorsal [34–37] and ventral hippocampus-dependent functions [24,25,38], it is important to examine whether long-term voluntary running causes region-specific expression of Δ FosB in the hippocampus.

The primary hypothesis of this study was that long-term voluntary wheel running would induce Δ FosB expression in the mouse hippocampus. This hypothesis was investigated by FosB/ Δ FosB immunohistochemistry in the dorsal and ventral hippocampal subfields, DG, CA1, and CA3, with extra emphasis on identifying region-specific induction. Results were confirmed by western blotting, which was used to identify the isoform of *fosB* gene products induced in the hippocampus. We also examined the cortex for region-specific FosB/ Δ FosB induction to rule out the possibility that long-term exercise non-specifically increased FosB/ Δ FosB immunoreactivity in the brain. Finally, the correlative association between FosB/ Δ FosB expression and neurogenesis was investigated as the first step in seeking the functional implications of exercise-induced Δ FosB induction in regulating hippocampal plasticity.

Materials and Methods

1: Animals and ethics statement

Twenty male C57BL/6 mice (8 weeks of age) were purchased from a commercial breeder (SLC, Shizuoka, Japan). Ten mice were used for Experiment 1, and the other ten for

Experiment 2. Mice were housed under controlled conditions of temperature (22–24°C) and light (12/12-h light/dark cycle, light on at 0500), and were provided food and water *ad libitum*. All experimental procedures were approved by the Animal Experimental Ethics Committee of the Tokyo Metropolitan University.

In each experiment, upon arrival, mice were randomly assigned to either a control group (Control, $n = 5$) or a running group (Runner, $n = 5$). During the first week, all mice were housed in standard plastic cages in groups (5 mice/cage) for initial acclimatization. Then, Runner mice were transferred into a cage equipped with a running wheel (ENV-046, Med Associate Inc., Georgia, VT, USA). Because social isolation is known to suppress exercise-induced neurogenesis in the hippocampus [39], Runner mice were housed as a group (5 mice/cage) for an additional 4 weeks. The number of wheel rotations was recorded each morning and body weight (g) was measured weekly.

2: Experiment 1. Immunohistochemical examination of FosB/ Δ FosB expression and hippocampal neurogenesis

2.1: Perfusion and tissue processing. The morning (0900–1100) after the last day of the running period, the mice were deeply anesthetized with pentobarbital sodium and transcardially perfused with cold saline. The brain was quickly removed and post-fixed in 4% paraformaldehyde in 0.1 M phosphate buffered saline (PBS, pH 7.4) overnight. The brain was then cryoprotected in 30% sucrose in PBS and frozen until further processing. Coronal brain sections (40 μ m) of a hemisphere were obtained using a freezing microtome and collected in PBS with 0.01% sodium azide.

2.2: Immunohistochemistry. A one-in-six series of sections was randomly selected for FosB/ Δ FosB immunostaining. An adjacent series was used for labeling doublecortin (DCX), a marker of immature neurons validated for assessing neurogenesis [40,41]. After quenching endogenous peroxidase activity with 1% H_2O_2 in PBS, free-floating sections were preincubated with blocking solution containing 10% normal horse serum in PBS for 2 h. Following rinses in PBS, sections were incubated with rabbit polyclonal pan-FosB antibody (1:1000, sc-48, Santa Cruz Biotechnology, Dallas, TX, USA) diluted in PBS with 0.5% Triton X-100 and 0.5% BSA (PBST-BSA) for 24 h at 4°C. Another series of sections were incubated with goat polyclonal anti-DCX antibody (1:500, sc-8066, Santa Cruz) in PBST-BSA for 48 h at 4°C. The sections were further incubated with an appropriate biotinylated secondary antibody (anti-rabbit IgG, 1:1000, AP182B; anti-goat IgG, 1:1000, AP180B, both antibodies from EMD Millipore, Billerica, MA, USA) in PBST-BSA for 2 h at room temperature. The sections were then treated with avidin-biotin-peroxidase complex (Vectastain ABC peroxidase kit, Vector Laboratories Inc, Burlingame, CA, USA) for 90 min following manufacturer's instructions. The antigens were finally visualized with 0.02% 3,3-diaminobenzidine (DAB) in 0.1 M Tris-HCl (pH 7.6) containing 0.01% H_2O_2 . For FosB/ Δ FosB immunostaining, the reaction was intensified with nickel ammonium sulfate. For DCX staining, cell nuclei were

counterstained with Nissl staining. Sections were mounted onto gelatin-coated slides and coverslips were placed.

2.3: Quantification of FosB/ Δ FosB immunoreactivity using image thresholding. The pan-FosB antibody used in this study was raised against an internal region shared by FosB and Δ FosB N-terminal region, so that cannot discriminate between the two isoforms. Therefore, the immunostained structures were described as FosB/ Δ FosB immunoreactive (FosB/ Δ FosB-ir) nuclei. For an unbiased blind quantification, slides were coded prior to analysis. The mouse brain atlas [42] was used to identify location of the following regions of interest (ROIs): granule cell layer (GCL) of DG (3 sections), pyramidal cell layer of CA1 (3 sections) and CA3 (2–3 sections) in the dorsal hippocampus (closed to -2.2 mm from the bregma); DG (2 sections), CA1 (2 sections), and CA3 (2 sections) in the ventral hippocampus (closed to -3.4 mm from the bregma) (Figure 4, left). The caudal sections contain both the dorsal and ventral portions of the hippocampus, but the ventral portion was targeted. In the DG, suprapyramidal (DGsp) and infrapyramidal (DGip) blades were analyzed separately. Motor cortex (2–3 sections, closed to -0.6 mm from the bregma), somatosensory barrel cortex (2–3 sections, closed to -0.6 mm from the bregma), visual cortex (3 sections, closed to -2.9 mm from the bregma), auditory cortex (3 sections, closed to -2.9 mm from the bregma), and olfactory bulb (3 sections, closed to +4.3 mm from the bregma) were also analyzed (Figure 6, left).

Digital images (2070 \times 1548 pixels) of each ROI were taken using an optical microscope (BX-51, Olympus, Tokyo, Japan) equipped with a CCD camera (DP-73, Olympus) and imaging software (cellSens, Olympus). The objective lens magnification was 10 \times for hippocampal ROIs and 4 \times for cortical ROIs. In order to identify moderate-to-strong FosB/ Δ FosB immunoreactivity (Figure 1D–G), using several sections in advance, both image acquisition settings (light intensity, size of field stop, exposure time, and white balance) and threshold levels for each of the RGB components were optimized for hippocampal and cortical ROIs. The following analysis was then performed under the optimized conditions (1). ROIs were selected by an irregularly shaped polygon (Figure 1A, B) (2). The image was thresholded, which converted the FosB/ Δ FosB-ir nuclei to a red color (Figure 1C–G) (3). The %ROI was then automatically calculated as follows: %ROI = (converted area (in red)/total ROI area) \times 100.

To validate this image thresholding analysis, 20 regions were randomly selected from different brain areas with different region sizes. In addition of the image thresholding quantification, the number of FosB/ Δ FosB-ir nuclei within the selected regions was manually counted and the density of FosB/ Δ FosB-ir nuclei was obtained by dividing the number of FosB/ Δ FosB-ir nuclei by the measured area (mm²).

2.4: Quantification of DCX-ir immature neurons in the dentate gyrus. The DCX-ir immature neurons in the DG of Runner mice were abundant and overlapping, making it difficult to precisely count the discrete number of DCX-ir soma using an optical microscope. However, in a previous study, Sholl analysis for morphological evaluation showed that each DCX-ir neuron has, on average, a single dendrite when measured within 40 μ m of the soma [43]. Therefore, the following original

analysis was developed to enable region-specific quantification of DCX-ir neurons.

(1) An image of the GCL was projected on a computer display using imaging software and a 40 \times objective lens (2). On the live image, a line segment (150 \pm 0.1 μ m) was drawn along the middle of the GCL (Figure 2) (3). Changing the focal depth, the number of times the line segment crossed DCX-ir dendrites were counted (4). The ROIs (dorsal DGsp, dDGsp; dorsal DGip, dDGip; ventral DGsp, vDGsp; ventral DGip, vDGip) corresponded to the regions where FosB/ Δ FosB immunoreactivity was analyzed (5). In every ROI, 2–3 line segments were drawn per section and the number of crossings was averaged over 2–3 sections per mouse. Because the thickness of the GCL is approximately 60–80 μ m, the number of crossings should reflect the number of DCX-ir neurons within the restricted region analyzed.

3. Experiment 2. Identification of the FosB/ Δ FosB isoform induced by wheel running

3.1: Perfusion and tissue processing. An additional cohort of mice was treated as above in Experiment 1. After 4 weeks of running intervention, the mice were transcardially perfused with cold saline under deep anesthesia. The hippocampus was quickly dissected out and frozen with liquid nitrogen, and stored at -80°C. The hippocampi of each mouse were homogenized in RIPA buffer (150 mM NaCl, 25 mM Tris-HCl pH 7.6, 1% NP-40, 1% sodium deoxycholate, 0.1% SDS, #8990, Thermo Scientific, IL, USA) containing protease inhibitors (cOmplete Mini, Roche, Mannheim, Germany). The lysates were centrifuged for 15 min at 5000 rpm at 4°C and supernatants were collected. Protein concentrations were measured with a BCA Protein Assay kit (#23227, Thermo Scientific, IL, USA).

3.2: Western blotting. Equal amounts of protein (30 μ g/lane) were electrophoresed on a 10% polyacrylamide gel, then transferred to a PVDF membrane (Immun-Blot, 0.2 μ m, Bio-Rad, MD, USA). Nonspecific binding was blocked by preincubating the membrane for 1 h in TBST (0.5 M NaCl, 20 mM Tris-HCl pH 7.5, 0.1% Tween-20) containing 3% BSA. The membrane was incubated with the pan-FosB antibody (1:1000) that used above for immunohistochemistry, dissolved in TBST containing 3% BSA. Following washes with TBST, the membrane was incubated with HRP-conjugated anti-rabbit IgG antibody (1:5000 in TBST, NA934, GE Healthcare, Buckinghamshire, UK) for 1 h at room temperature. After washes with TBST, protein bands were visualized by incubation with Enhanced Chemiluminescence (Western Lightning Plus-ECL, PerkinElmer, MA, USA) and captured using an Image Quant LAS 4000 mini (GE Healthcare, Buckinghamshire, UK). The membrane was then reprobbed with anti-glyceraldehyde-3-phosphate dehydrogenase (GAPDH) antibody (#2275, 1:5000 in TBS-T, Trevigen, MD, USA) as a loading control. The optical density of the protein bands was quantified using Image-J and normalized to the level of GAPDH.

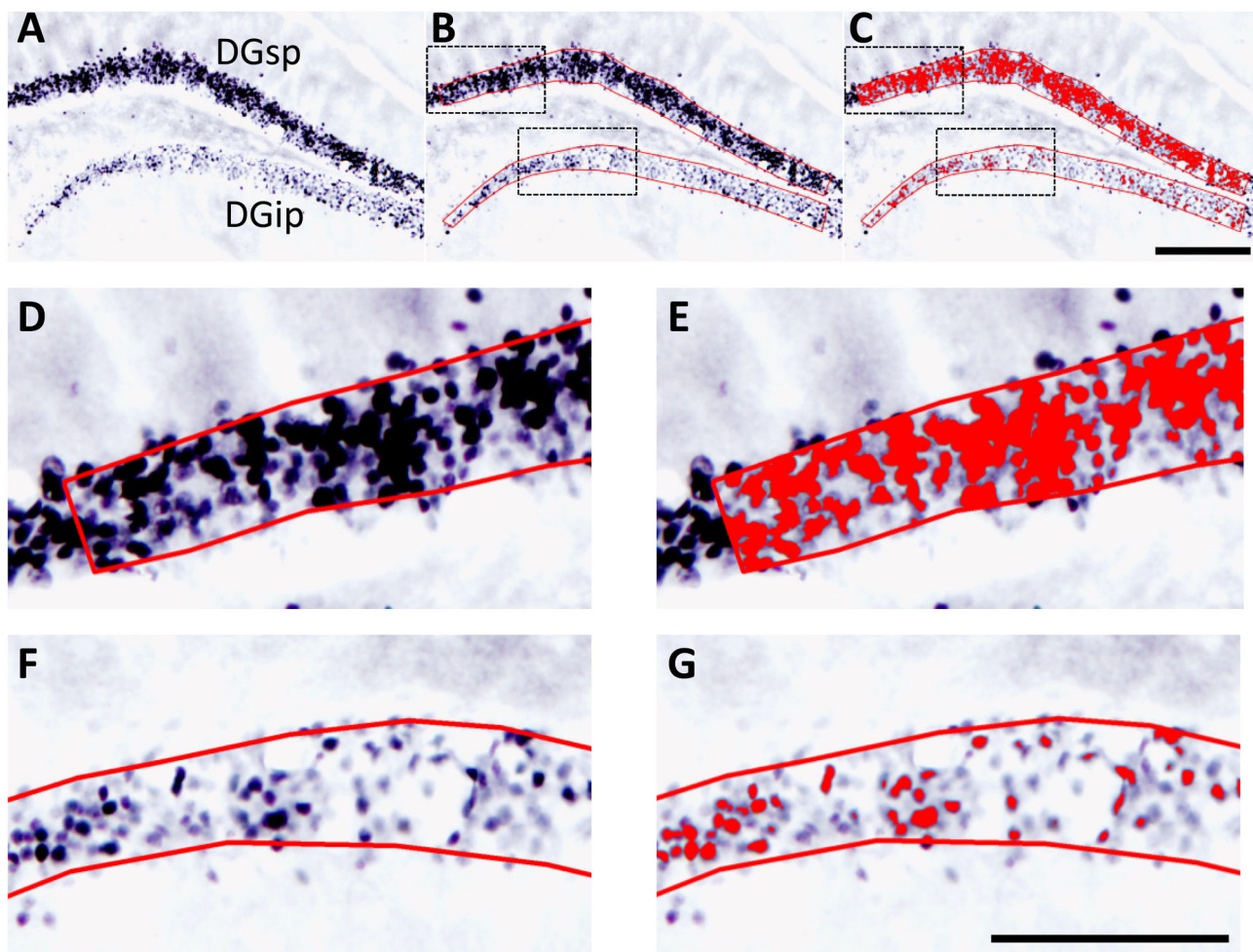


Figure 1. Representative images illustrating the steps involved in image thresholding analysis of FosB/ Δ FosB immunoreactivity. (A) An unprocessed image of FosB/ Δ FosB-ir nuclei in the dorsal DG. (B) ROIs were selected by overlaying an irregularly shaped polygon (shown in red). Boxes (black, broken lines) represent the areas of magnification shown in (D, top) and (F, bottom). (C) The image was then thresholded, which converted the FosB/ Δ FosB-ir nuclei to a red color. Boxes (black, broken lines) represent the areas of magnification shown in (E, top) and (G, bottom). Scale bar in C = 200 μ m. (D & E) Magnified images representing dense FosB/ Δ FosB expression in the suprapyramidal blade of the DG (DGsp), from (B) and (C), respectively. (F & G) Magnified images representing weak FosB/ Δ FosB immunoreactivity in the infrapyramidal blade of the DG (DGip), from (B) and (C), respectively. Scale bar in G = 100 μ m.

doi: 10.1371/journal.pone.0081245.g001

4: Statistical analysis

Changes in mouse body weight were analyzed by two-way repeated-measures ANOVA (group \times time). An unpaired t-test was used to determine statistical differences between groups (Control vs. Runner). Pearson's correlation analysis was used to validate the FosB/ Δ FosB immunoreactivity analysis (manual counting vs. image thresholding), and to examine the association between the level of FosB/ Δ FosB expression and the number of DCX crossings in the DG. Data were presented as mean \pm SEM. The threshold for statistical significance was set at $P < 0.05$.

Results

1: Body weight and running distance in Experiments 1 and 2

Changes in body weight of both Control and Runner mice in Experiments 1 and 2 are pooled and shown in Figure 3. Two-way repeated-measures ANOVA indicated a significant interaction (group \times time, $F(4, 72) = 13.6$, $P < 0.001$) and main effect of group $F(1, 18) = 6.07$, $P < 0.05$, indicating a significantly lower body weight in Runner mice. The running distance per cage is shown in Table 1. Although the precise running distance of each mouse was uncertain because the mice were housed together, regular observation confirmed that

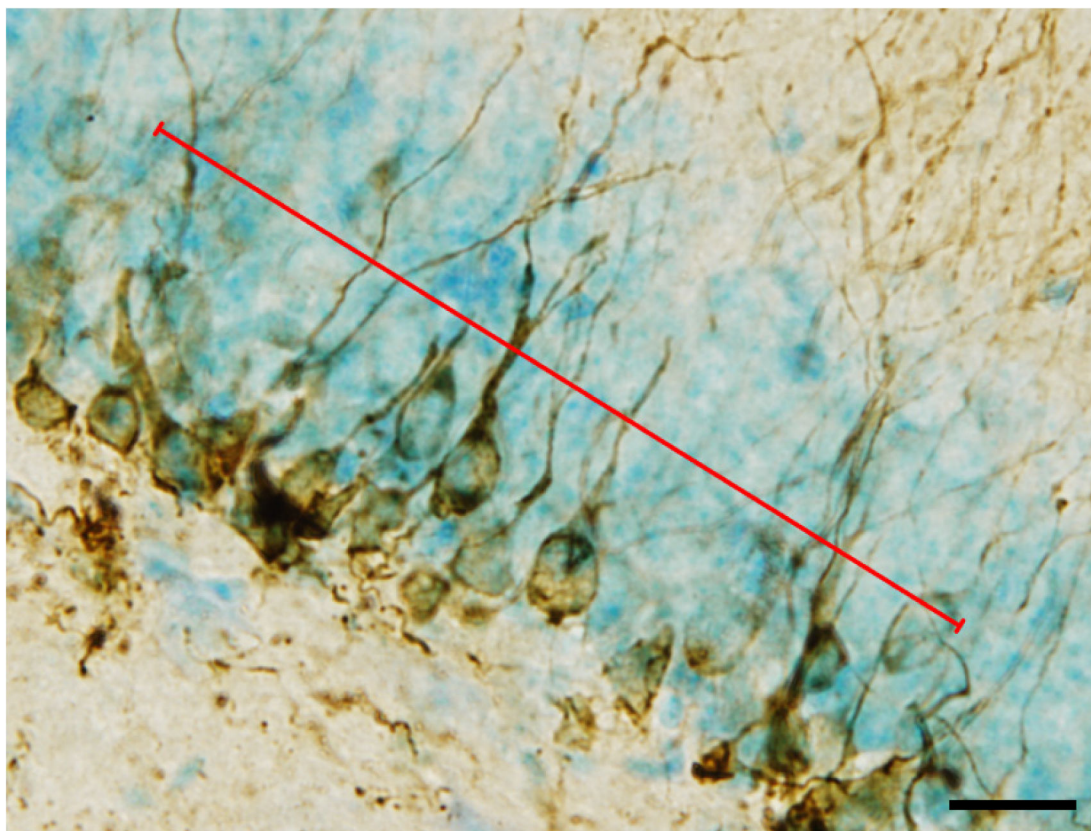


Figure 2. A representative image of DCX-ir immature neurons and a line segment ($150 \pm 0.1 \mu\text{m}$) overlaid for counting the number of crossings with DCX-ir dendrites. Scale bar = $20 \mu\text{m}$.

doi: 10.1371/journal.pone.0081245.g002

all mice frequently performed wheel running. The Runner mice in Experiment 2 ran longer than those in Experiment 1, but the mean running distance (m/day/cage) was consistent throughout each experiment.

2: Validation of FosB/ Δ FosB immunoreactivity quantification using image thresholding

There was a significant correlation between FosB/ Δ FosB-ir area obtained by image thresholding and density of FosB/ Δ FosB-ir nuclei obtained by manual counting ($r = 0.941$, $P < 0.0001$, Figure 4).

3: FosB/ Δ FosB immunoreactivity in the hippocampus

Representative images of FosB/ Δ FosB immunostaining in the dorsal and ventral hippocampal subfields were shown in Figure 5. In the all ROIs analyzed, FosB/ Δ FosB immunoreactivity in Runner mice (Figure 5, right) was qualitatively higher than that in Control mice (Figure 5, center). In Runner mice, quantitative analysis indicated a significant increase in FosB/ Δ FosB-ir area in both the dorsal (DGsp: $P < 0.01$; DGip: $P < 0.01$; CA1: $P < 0.05$; CA3: $P < 0.05$) and the ventral hippocampal subfields (DGsp: $P < 0.01$; DGip: $P < 0.05$; CA1: $P < 0.05$; CA3: $P < 0.05$; Figure 6).

4: FosB/ Δ FosB immunoreactivity in the cortex

Representative images of FosB/ Δ FosB immunostaining in the cortical ROIs are shown in Figure 7. Quantitative analysis revealed region-dependent changes in FosB/ Δ FosB immunoreactivity with long-term running (Figure 8). In Runner mice, the FosB/ Δ FosB-ir area was significantly higher in the motor cortex ($P < 0.05$) and the somatosensory barrel cortex ($P < 0.05$), but not in the visual cortex ($P = 0.662$) or the olfactory bulb ($P = 0.523$). In the auditory cortex, FosB/ Δ FosB-ir area tended toward an increase in Runner mice ($P = 0.105$).

5: Neurogenesis

Representative images of DCX immunostaining are shown in Figure 9. In the dorsal hippocampus, DCX immunoreactivity in Runner mice (Figure 9, right) was qualitatively higher compared to Control mice (Figure 9, left). Compared to the dorsal hippocampus, DCX immunoreactivity in the ventral hippocampus was weaker in both Control and Runner mice. In Runner mice, the number of crossings was significantly higher in the dDGsp ($P < 0.01$) and dDGip ($P < 0.01$; Figure 10). In the ventral hippocampus, the number of crossings in Runner mice was tended to increase, but there were no significant differences between groups (vDGsp, $P = 0.101$; vDGip, $P = 0.257$; Figure 10).

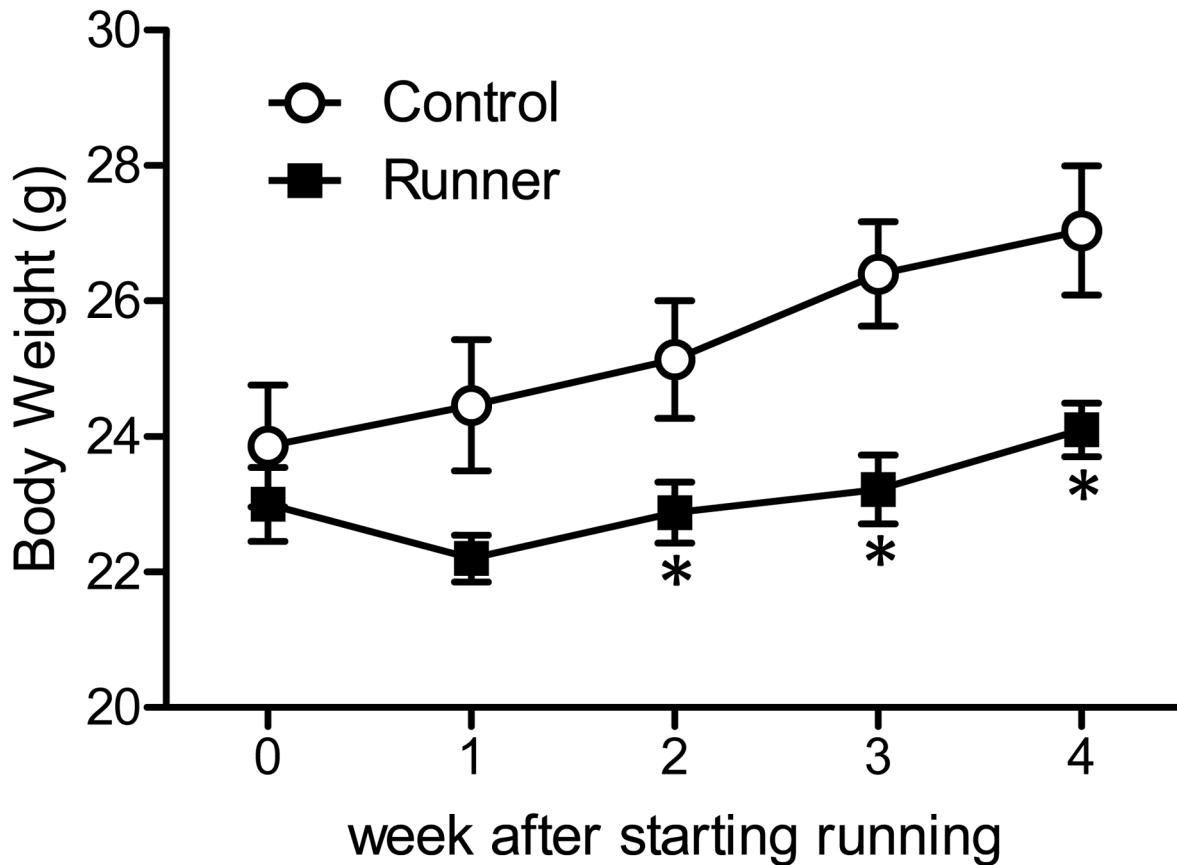


Figure 3. Changes in body weights of Control and Runner mice of Experiment 1 and 2. Data are presented as mean \pm SEM (n = 10 per group).

doi: 10.1371/journal.pone.0081245.g003

Table 1. Averaged daily running distance for each week during the 4-weeks running period.

Week after starting running		1	2	3	4
Experiment 1	m/day/cage	16135	17346	17688	17970
Experiment 2	m/day/cage	17073	25666	25967	25941

doi: 10.1371/journal.pone.0081245.t001

6: Correlation between FosB/ Δ FosB expression and neurogenesis

A correlation analysis was performed between the FosB/ Δ FosB-ir area and the number of DCX crossings (Figure 11). Because each data set (e.g., dorsal DGsp in Control mice) consists of only 5 pairs, the analysis was first performed with all 40 pairs. Intriguingly, there was a significant correlation between the FosB/ Δ FosB-ir area and the number of DCX crossings ($r = 0.885$, $P < 0.0001$). In addition, a significant correlation was also identified when the dorsal DG ($r = 0.762$, $P < 0.05$) and the ventral DG ($r = 0.816$, $P < 0.01$) were analyzed separately.

7: Identification of the FosB/ Δ FosB isoform induced by long-term running

Finally, to identify the isoform of *fosB* gene products induced in the hippocampus in response to long-term running, the hippocampi from an additional cohort of mice were subjected to western blotting with using the same pan-FosB antibody. Multiple bands of 35–37 kDa, representing modified isoforms of Δ FosB [44], were significantly increased in Runner versus Control mice (Figure 12, $P < 0.01$). On the other hand, the 48 kDa FosB isoform was undetectable in either group. Another band faintly visible above 25 kDa likely represents the $\Delta 2\Delta$ FosB isoform (27 kDa). There were two other bands, at above 50 kDa and 37 kDa, which were most likely because of non-specific binding. When quantified, no differences were

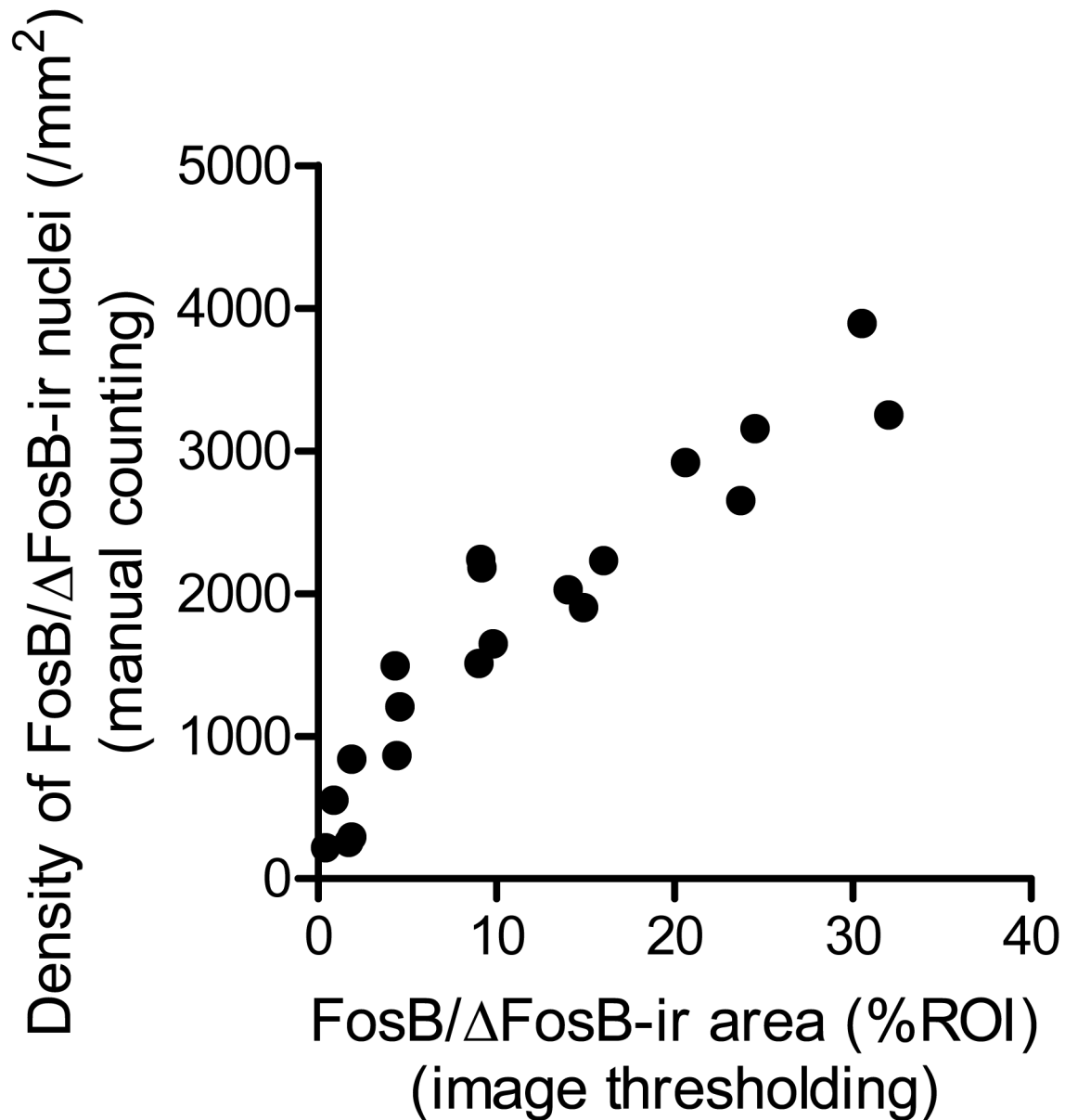


Figure 4. A significant correlation was found between FosB/ Δ FosB-ir area (%ROI) obtained by image thresholding and density of FosB/ Δ FosB-ir nuclei (nuclei/mm²) obtained by manual counting.

doi: 10.1371/journal.pone.0081245.g004

found in these non- Δ FosB bands between groups (data not shown).

Discussion

In summary, the present study first performed an immunohistochemical analysis to examining 1) whether long-term voluntary wheel running induces FosB/ Δ FosB expression in the hippocampus; and 2) whether a region-specific response exists along its dorso-ventral axis. Four weeks of voluntary wheel running induced a significant increase in FosB/ Δ FosB immunoreactivity in all of the hippocampal regions analyzed

(i.e., the DG, CA1, and CA3 subfields of both the dorsal and ventral portions of the hippocampus). We confirmed that the 35–37kDa Δ FosB isoform was the major *fosB* gene product accumulating in response to long-term running. These results clearly support the hypothesis that long-term regular exercise is a potent trigger for Δ FosB induction throughout the hippocampus, and that its induction might be a novel molecular mechanism by which exercise affects various types of dorsal and/or ventral hippocampus-dependent functions.

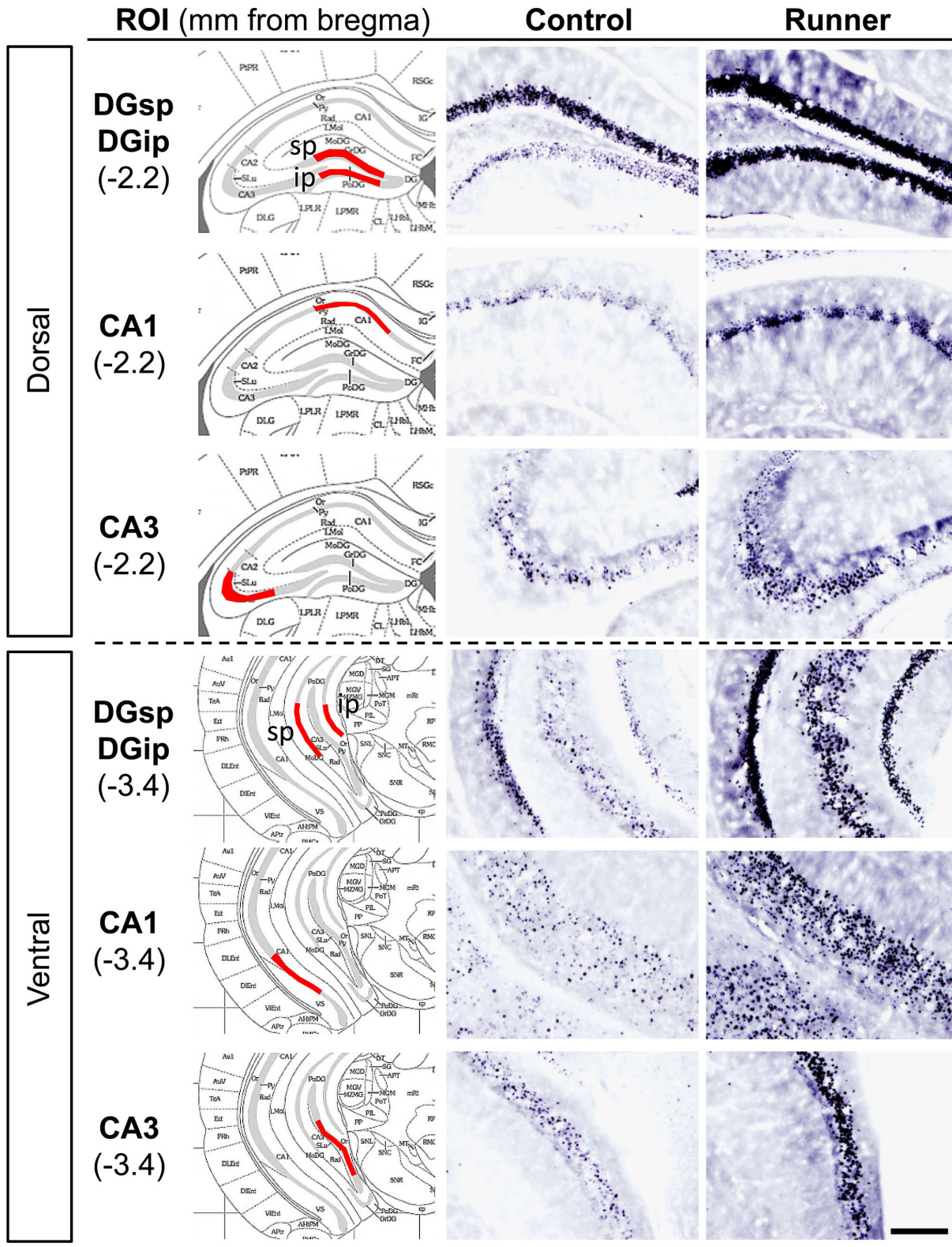


Figure 5. Representative images of FosB/ Δ FosB immunostaining in the dorsal and ventral hippocampal ROIs. Left: Illustration adopted from the mouse brain atlas [42]. ROIs measured are indicated in red. Center: Images taken from the brains of Control mice. Right: Images taken from the brains of Runner mice. Scale bar = 200 μ m.

doi: 10.1371/journal.pone.0081245.g005

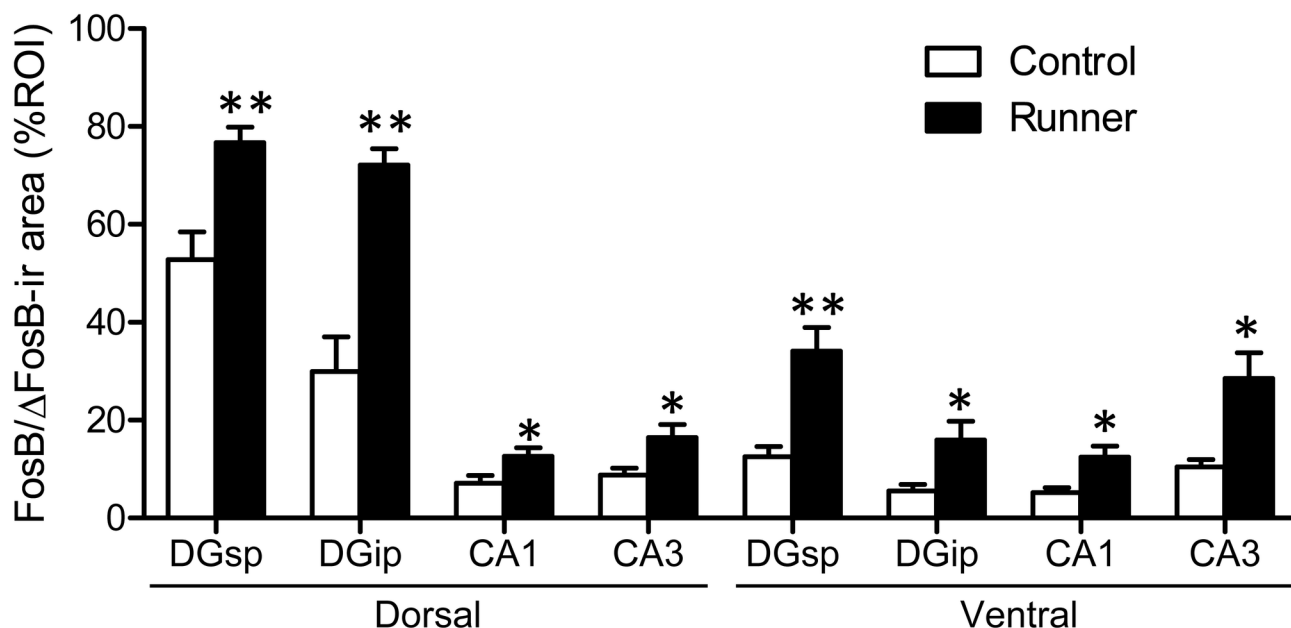


Figure 6. Quantification of FosB/ Δ FosB-ir area in the hippocampal ROIs. FosB/ Δ FosB-ir area (%ROI) was significantly higher in Runner mice for all ROIs measured in the hippocampus. Data are presented as mean \pm SEM ($n = 5$ per group). * $P < 0.05$, ** $P < 0.01$ vs. Control.

doi: 10.1371/journal.pone.0081245.g006

1: Validation and limitations of quantifying FosB/ Δ FosB immunoreactivity using image thresholding

An image thresholding technique, widely used in immunohistochemical studies for counting the number of target cells and for evaluating cell morphology, was adopted in this study for region-specific quantification of FosB/ Δ FosB immunoreactivity [15,45,46]. A significant correlation between the levels of FosB/ Δ FosB immunoreactivity quantified by image thresholding and by manual counting was demonstrated (Figure 4). However, because density and overlap prevented counting the number of FosB/ Δ FosB-ir nuclei in highly dense areas, the demonstrated correlation only implies accuracy of the image thresholding method when the FosB/ Δ FosB-ir areas represents $< \sim 40\%$ of the total ROI area. Therefore, careful interpretation is required for FosB/ Δ FosB-ir areas $> 40\%$ of the total ROI area.

In particular, in the DG of Runner mice (Figure 4), FosB/ Δ FosB expression was greatly induced by wheel running and most of the FosB/ Δ FosB-ir nuclei overlapped. In these areas, increased induction of FosB/ Δ FosB expression leads to a larger underestimation of the level of expression, regardless of the quantification method used (image thresholding or manual counting). However, despite the risk of underestimation, it is important to note that the present study successfully demonstrated significant increases in FosB/ Δ FosB-ir area in the DG of Runner mice. This suggests that the methodological limitations do not compromise our findings. Instead, the potential underestimation increases the reliability of the finding that long-term running increased FosB/ Δ FosB immunoreactivity in the hippocampus.

2: Uniform Induction of Δ FosB within the hippocampus by long-term running

The hippocampus has anatomical and functional gradients along its longitudinal axis [26], so for the present study FosB/ Δ FosB immunoreactivity in the dorsal and ventral portions of the hippocampus was analyzed separately. The data demonstrated that long-term running uniformly increased FosB/ Δ FosB expression in all hippocampal ROIs measured. This uniform induction of FosB/ Δ FosB immunoreactivity might be non-specifically caused by systemic metabolic changes associated with long-term running. However, it is important to note that there were region-specific increases of FosB/ Δ FosB immunoreactivity in the cortex. This result is supported by recent findings showing that an acute bout of treadmill running increased regional cerebral blood flow in the hippocampus, but not in the olfactory bulb [8]. Furthermore, Rhodes et al. (2003) demonstrated that 7 days of voluntary wheel running induced c-Fos expression in the DG and CA2/3 of the hippocampus (CA1 was not measured) and in the sensory cortex, but not in the visual cortex [47]. Taken together, these studies suggest that uniform induction of FosB/ Δ FosB expression in the hippocampus is not a non-specific consequence of long-term running. Interestingly, Hawley et al. recently reported that chronic unpredictable stress increased FosB/ Δ FosB expression in the dorsal, but not in the ventral, DG of the rat hippocampus [48]. With further investigation, the distinct patterns of FosB/ Δ FosB induction such as those elicited by exercise or stress will provide continued insights into stimulus-dependent impacts on the hippocampus.

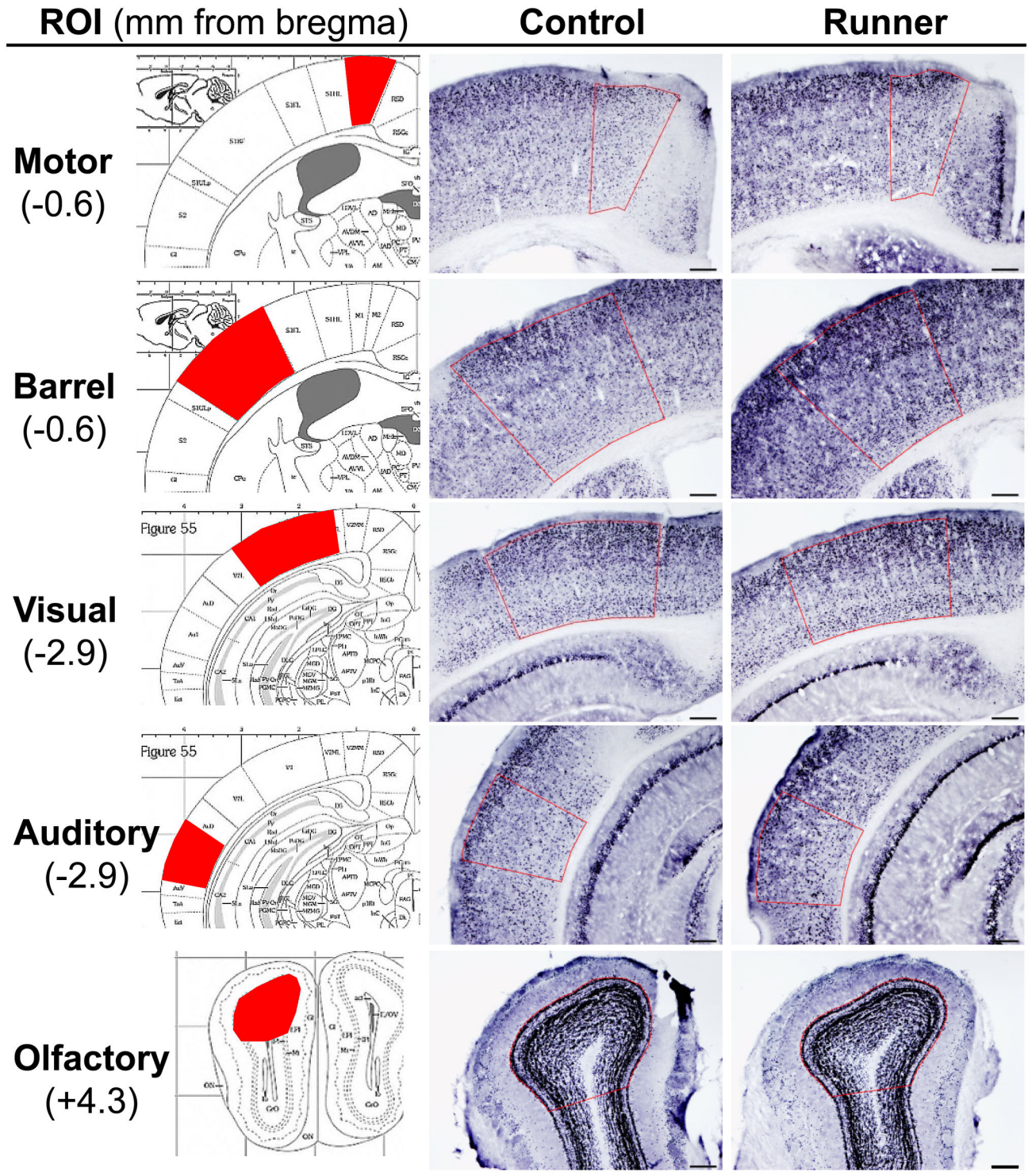


Figure 7. Representative images of FosB/ Δ FosB immunostaining in the cortical ROIs. Left: Illustration adopted from the mouse brain atlas [42]. ROIs measured are indicated in red. Center: Images taken from the brains of Control mice. Right: Images taken from the brains of Runner mice. Scale bar = 200 μ m.

doi: 10.1371/journal.pone.0081245.g007

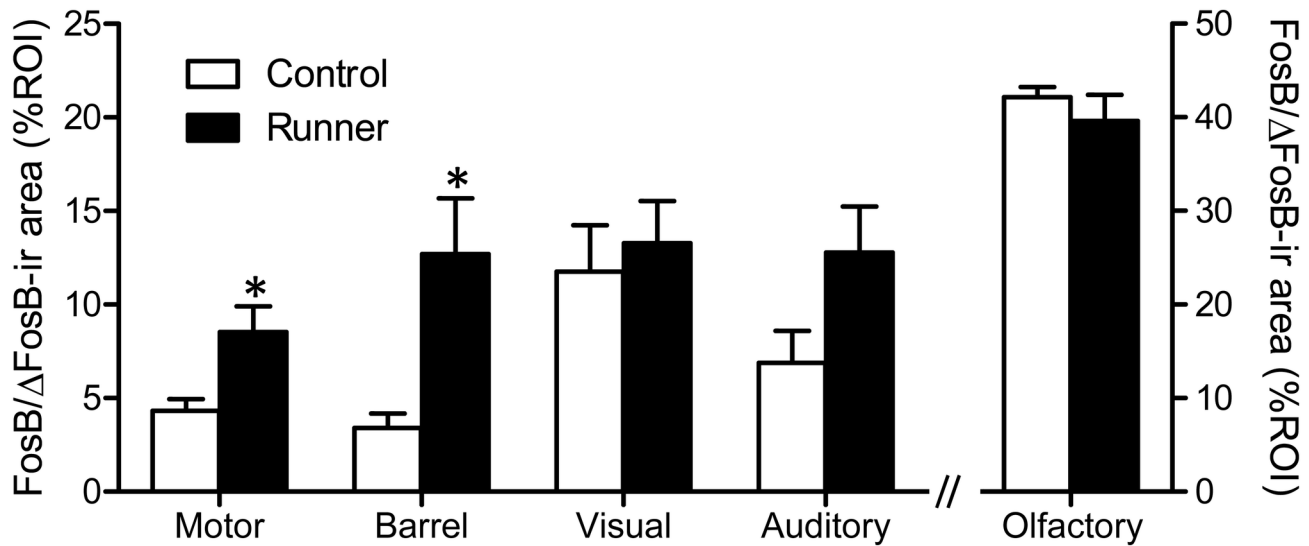


Figure 8. Quantification of FosB/ Δ FosB-ir area in the cortical ROIs. Runner mice show region-dependent increases in FosB/ Δ FosB-ir area (%ROI) in the cortical ROIs. Data are presented as mean \pm SEM ($n = 5$ per group). * $P < 0.05$ vs. Control.

doi: 10.1371/journal.pone.0081245.g008

The primary pan-FosB antibody used in this study is known to recognize all isoforms of FosB proteins. Upon western blotting analysis, we found that the only isoforms that increased in the hippocampus after long-term running were the modified isoforms of Δ FosB (35–37 kDa), the only stable isoforms among Fos family proteins [11]. This finding is in accordance with previous work using pan-Fos antibody to demonstrate that 35–37 kDa Δ FosB is the predominant Fos family protein induced in the frontal cortex by chronic stress [44]. Hence, the increase in hippocampal FosB/ Δ FosB immunoreactivity induced here by long-term running most likely reflects the level of Δ FosB.

Less is known about region-specific effects of exercise on molecular and structural aspects of the hippocampus. However, numerous behavioral studies indicate a great potential for exercise-induced improvements in both the dorsal and ventral hippocampal functions. Exercise has been demonstrated to improve spatial learning and memory [34–38] and spatial and contextual processing mainly depends on the dorsal hippocampus [27,28]. In contrast, exercise is also known to exert anxiolytic and antidepressant properties [24,25,38] and these emotional responses are predominantly regulated by the ventral hippocampus [29,30]. The uniform induction of Δ FosB by long-term running seen in this study suggests that some form of neuroplastic changes occurred throughout the entire hippocampus. This would explain why exercise can affect both dorsal and ventral hippocampus-dependent functions.

3: Region-specific analysis of exercise-induced neurogenesis

A functional dissociation of neurogenesis between the dorsal and ventral hippocampus has been also receiving increasing attention [49]. In this study, taking advantage of the morphological characteristics of DCX-ir immature neurons [43],

we counted the number of intersections between DCX-ir dendrites and a line segment drawn along the middle of the GCL. This measurement did not provide the total number of DCX-ir neurons in the DG, but it enabled region-specific quantification necessary for conducting a correlation analysis with FosB/ Δ FosB expression data (see below). Following long-term running, the number of DCX-ir neurons significantly increased in the dorsal, but not the ventral, DG. This suggests that exercise might stimulate neurogenesis more strikingly in the dorsal compared to the ventral portion of the DG. However, previous studies have reported conflicting results in which wheel running increased neurogenesis in both the dorsal and ventral DG [50,51]. In the present study, the number of DCX-ir crossings in the ventral DG tended to increase with running, though the small sample size (5 mice per group) might have limited the ability to detect a statistically significant difference between groups. Therefore, it is likely premature to rule out the possibility that voluntary wheel running can stimulate ventral hippocampal neurogenesis. Further detailed studies are necessary to understand the region-specificity of exercise-induced neurogenesis regarding its multistep process (cell proliferation, differentiation, migration, and survival).

4: Functional implications of exercise-induced Δ FosB induction for regulating hippocampal plasticity

Finally, as the first step in recognizing the functional implications of exercise-induced Δ FosB induction in the hippocampus, we examined the relationship of FosB/ Δ FosB immunoreactivity to DCX-ir crossings in both the dorsal and ventral DG and found a significant, positive correlation between the two variables. Although the exact mechanisms by which Δ FosB regulates exercise-induced neurogenesis remain uncertain, a recent study demonstrated that *fosB*-null mice, which lack FosB, Δ FosB, and $\Delta 2\Delta$ FosB (all the *fosB* products),

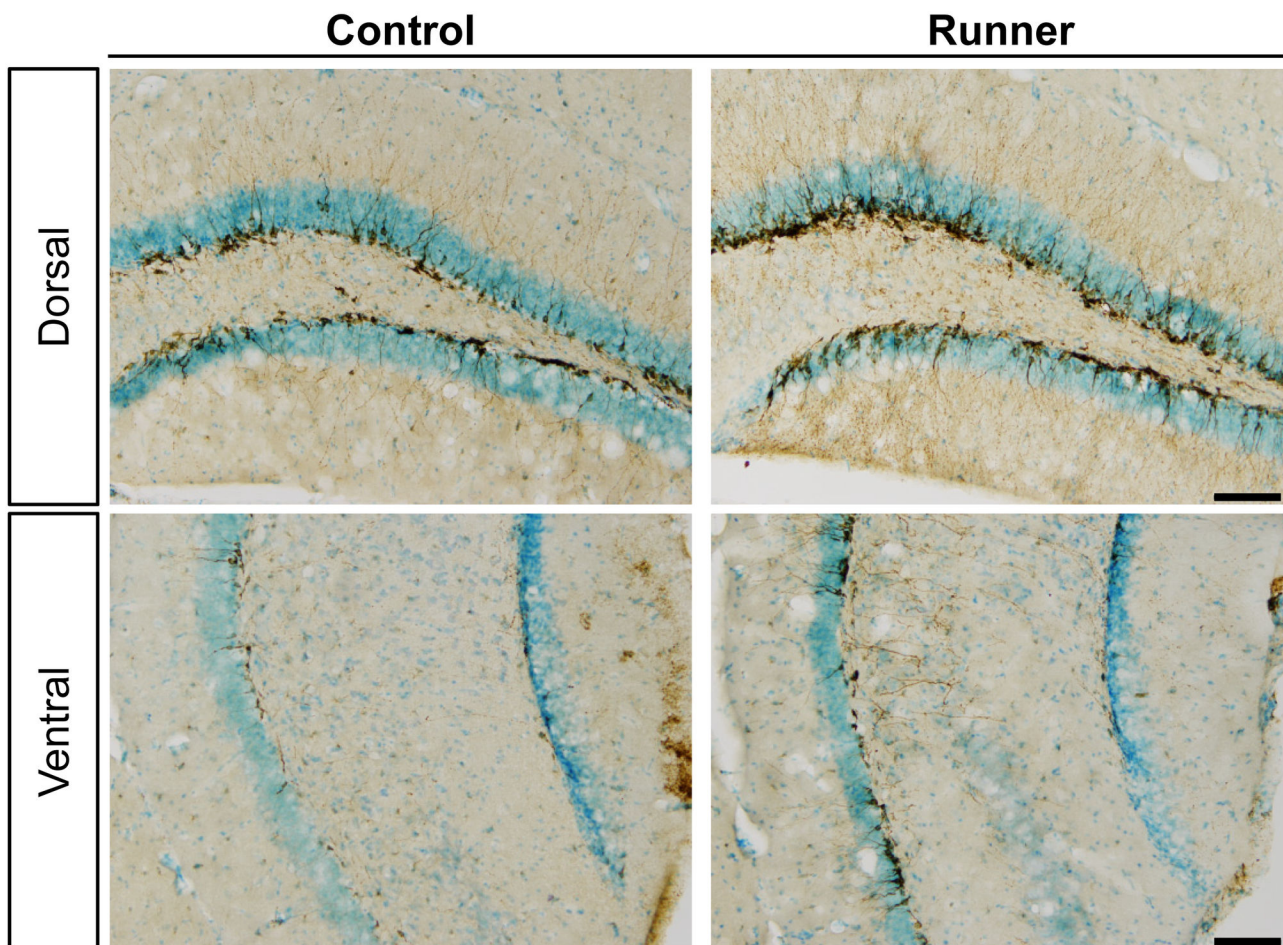


Figure 9. Representative images of DCX-ir immunostaining of the dorsal and ventral DG obtained from the brains of Control and Runner mice, respectively. Scale bar = 100 μ m.

doi: 10.1371/journal.pone.0081245.g009

exhibited deficits in basal hippocampal neurogenesis, including decreased proliferation of neuronal progenitor cells, increased ectopic migration of newborn neurons, and abnormal DG structures [20]. However, these alterations were not observed in *fosB(d/d)* mice, which lack FosB, but not Δ FosB/ Δ 2 Δ FosB. Interestingly, in *fosB*-null mice, expression of some neurogenesis-related genes, including *Vgf* (VGF nerve growth factor inducible) and *Gal* (Galanin prepropeptide) were downregulated [20]. Since VGF and GAL are secretory molecules, one proposal which holds promise considers that neurons expressing Δ FosB may regulate neurogenesis through autocrine/paracrine activity [20].

Additionally, it should be noted that the region where Δ FosB is induced by running spatially overlaps with the region where neurogenic activity is high. This finding suggests that exercise-induced neurogenesis is at the minimum activity-dependent. Neuronal activation is key to maintaining and improving central nervous system function [9], through mechanisms including expression and release of brain-derived neurotrophic factor (BDNF) [52,53], uptake of serum insulin-like growth factor-1

(IGF-1) through the blood-brain barrier [54,55], suppression of apoptosis [56], and regulation of mitochondrial motility [57]. Hence, the present study suggests that long-term exercise triggered repeated neuronal activation, evident in the increased Δ FosB expression, which contributes to enhancing hippocampal plasticity, potentially through these multiple mechanisms described above.

The present study only assessed exercise-induced neurogenesis and its association with FosB/ Δ FosB expression in the DG. However, FosB/ Δ FosB immunoreactivity was also induced in the CA1 and CA3 subfields. While further studies are required to gain more understanding of the functional roles of exercise-induced Δ FosB expression within these subfields, previous literature offers a promising possibility. Guan et al. (2011) demonstrated that specific ablation of the cyclin-dependent kinase 5 (Cdk5) in the CA1 or CA3 pyramidal neurons impaired memory consolidation or retrieval, respectively [58]. Interestingly, the Cdk5 is the downstream target of Δ FosB [59] and is involved in regulating synaptic plasticity [60]. Therefore, exercise-induced Δ FosB expression

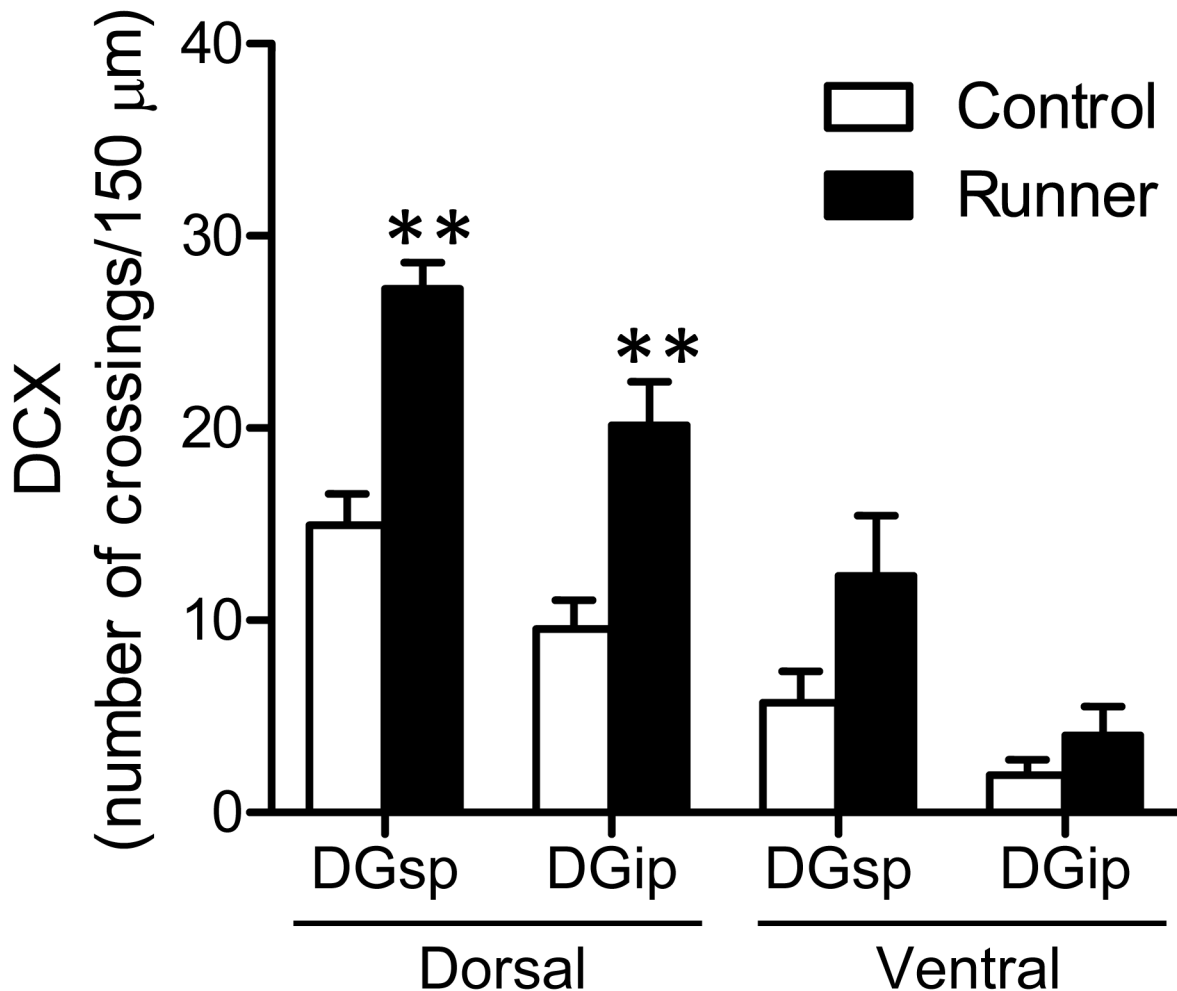


Figure 10. Quantification of DCX-ir immature neurons in the DG. In Runner mice, the number of intersections between DCX-ir dendrites and a line segment was significantly higher in the dorsal DG, but not in the ventral, DG. sp, suprapyramidal blade. ip, infrapyramidal blade. Data are presented as mean \pm SEM ($n = 5$ per group). ** $P < 0.01$ vs. Control.

doi: 10.1371/journal.pone.0081245.g010

could be involved in regulating synaptic plasticity through Cdk5 activation in the CA1 and CA3 subfields.

Conclusion

While acute bouts of exercise were known to induce the expression of immediate early gene proteins in the hippocampus, the present study provides the first evidence that long-term regular exercise significantly induces Δ FosB

expression in the entire hippocampus. This uniform induction of Δ FosB supports the current understanding that exercise is an effective non-pharmacological intervention able to improve multiple hippocampal functions. Together with the significant correlation between FosB/ Δ FosB expression and neurogenesis, these data are provocative and indicate a need for further studies delineating the role of Δ FosB in mediating the effects of exercise on hippocampal function, including neurogenesis.

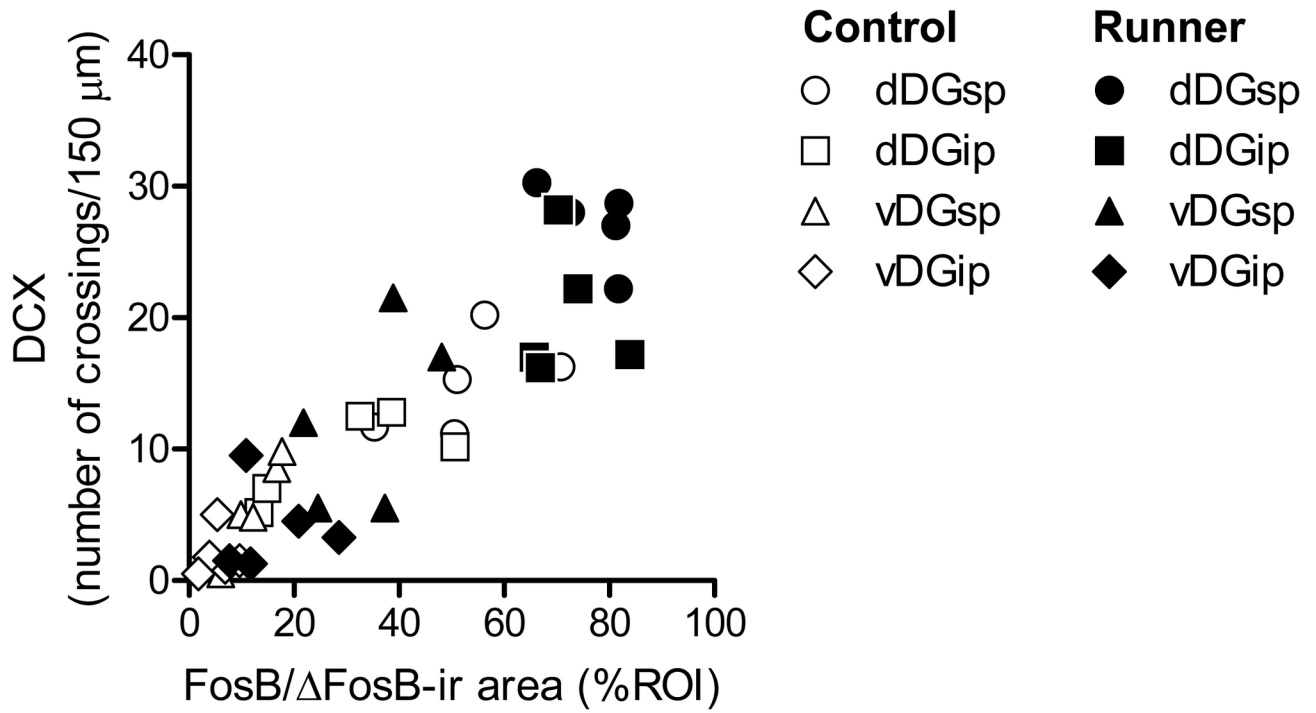


Figure 11. Correlative association between FosB/ Δ FosB expression and neurogenesis. A significant correlation was found between FosB/ Δ FosB-ir area and the number of DCX crossings in the hippocampus.

doi: 10.1371/journal.pone.0081245.g011

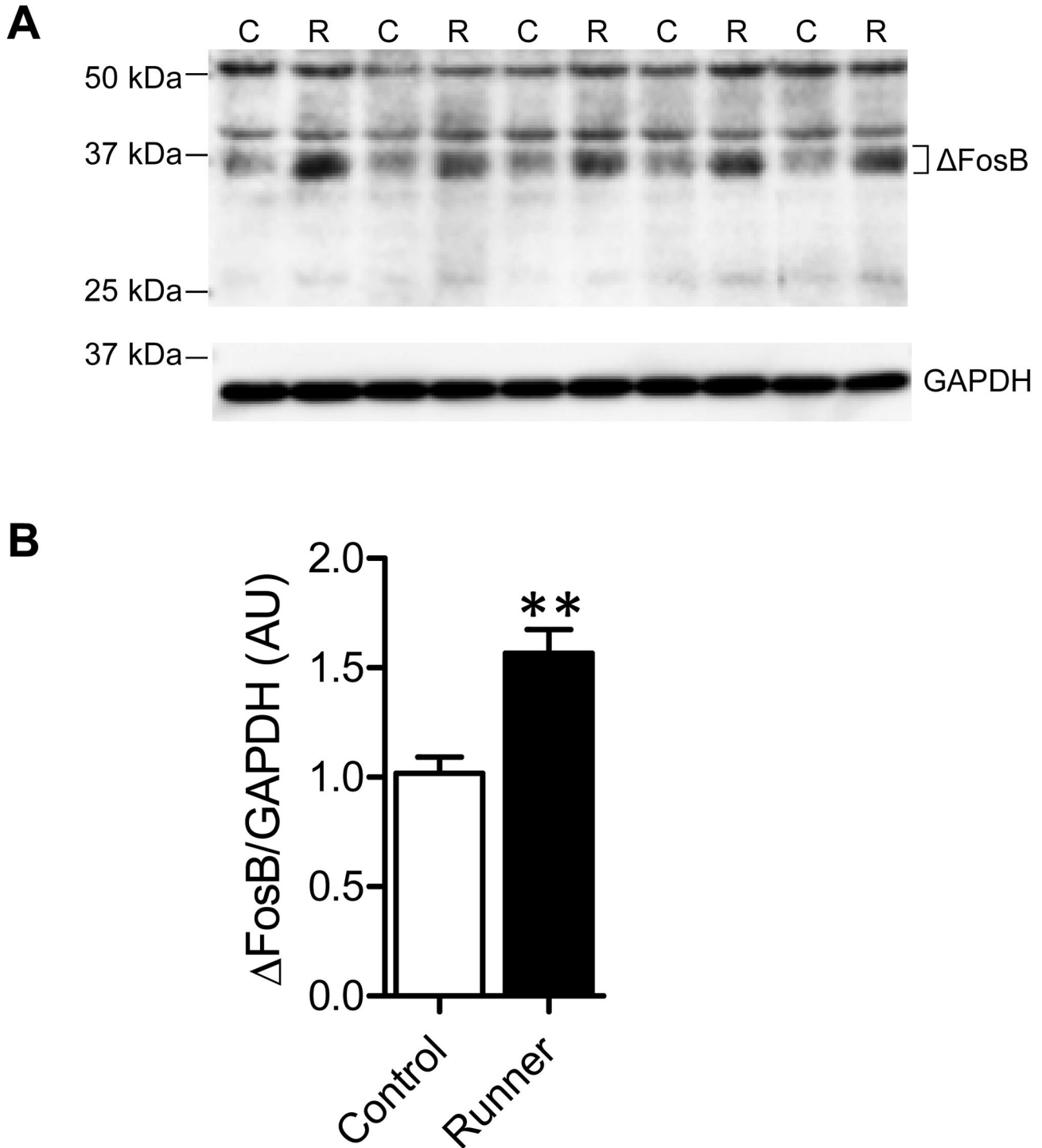


Figure 12. Identification of the isoforms of the *fosB* gene product induced by long-term running. (A) A representative western blot using pan-FosB antibody (upper), and anti-GAPDH antibody for a loading control (lower). C, Control mice, R, Runner mice. (B) Δ FosB isoforms (35–37 kDa) were quantified and presented as relative changes from Control mice. Data are mean \pm SEM ($n = 5$ per group). ** $P < 0.01$ vs. Control.

doi: 10.1371/journal.pone.0081245.g012

Author Contributions

Conceived and designed the experiments: TN. Performed the experiments: TN MK. Analyzed the data: TN. Contributed

reagents/materials/analysis tools: TN IK. Wrote the manuscript: TN.

References

- Dishman RK, Berthoud HR, Booth FW, Cotman CW, Edgerton VR et al. (2006) Neurobiology of exercise. *Obesity* (Silver Spring) 14: 345-356. doi:10.1038/oby.2006.46. PubMed: 16648603.
- Foster PP, Rosenblatt KP, Mulsis RO (2011) Exercise-induced cognitive plasticity, implications for mild cognitive impairment and Alzheimer's disease. *Front Neurol* 2: 28. PubMed: 21602910.
- Pereira AC, Huddleston DE, Brickman AM, Sosunov AA, Hen R et al. (2007) An in vivo correlate of exercise-induced neurogenesis in the adult dentate gyrus. *Proc Natl Acad Sci U S A* 104: 5638-5643. doi:10.1073/pnas.0611721104. PubMed: 17374720.
- Erickson KI, Voss MW, Prakash RS, Basak C, Szabo A et al. (2011) Exercise training increases size of hippocampus and improves memory. *Proc Natl Acad Sci U S A* 108: 3017-3022. doi:10.1073/pnas.1015950108. PubMed: 21282661.
- Lee TH, Jang MH, Shin MC, Lim BV, Kim YP et al. (2003) Dependence of rat hippocampal c-Fos expression on intensity and duration of exercise. *Life Sci* 72: 1421-1436. doi:10.1016/S0024-3205(02)02406-2. PubMed: 12527039.
- Clark PJ, Bhattacharya TK, Miller DS, Rhodes JS (2011) Induction of c-Fos, Zif268, and Arc from acute bouts of voluntary wheel running in new and pre-existing adult mouse hippocampal granule neurons. *Neuroscience* 184: 16-27. doi:10.1016/j.neuroscience.2011.03.072. PubMed: 21497182.
- Oladehin A, Waters RS (2001) Location and distribution of Fos protein expression in rat hippocampus following acute moderate aerobic exercise. *Exp Brain Res* 137: 26-35. doi:10.1007/s002210000634. PubMed: 11310169.
- Nishijima T, Okamoto M, Matsui T, Kita I, Soya H (2012) Hippocampal functional hyperemia mediated by NMDA receptor/NO signaling in rats during mild exercise. *J Appl Physiol* (1985) 112: 197-203. doi:10.1152/jappphysiol.00763.2011. PubMed: 21940846.
- Bell KF, Hardingham GE (2011) The influence of synaptic activity on neuronal health. *Curr Opin Neurobiol* 21: 299-305. doi:10.1016/j.conb.2011.01.002. PubMed: 21292474.
- Tulchinsky E (2000) Fos family members: regulation, structure and role in oncogenic transformation. *Histol Histopathol* 15: 921-928. PubMed: 10963134.
- Nestler EJ, Barrot M, Self DW (2001) DeltaFosB: a sustained molecular switch for addiction. *Proc Natl Acad Sci U S A* 98: 11042-11046. doi:10.1073/pnas.191352698. PubMed: 11572966.
- Chen J, Kelz MB, Hope BT, Nakabeppu Y, Nestler EJ (1997) Chronic Fos-related antigens: stable variants of deltaFosB induced in brain by chronic treatments. *J Neurosci* 17: 4933-4941. PubMed: 9185531.
- Wallace DL, Vialou V, Rios L, Carle-Florence TL, Chakravarty S et al. (2008) The influence of DeltaFosB in the nucleus accumbens on natural reward-related behavior. *J Neurosci* 28: 10272-10277. doi:10.1523/JNEUROSCI.1531-08.2008. PubMed: 18842886.
- Zachariou V, Bolanos CA, Selley DE, Theobald D, Cassidy MP et al. (2006) An essential role for DeltaFosB in the nucleus accumbens in morphine action. *Nat Neurosci* 9: 205-211. doi:10.1038/nn1636. PubMed: 16415864.
- Kaplan GB, Leite-Morris KA, Fan W, Young AJ, Guy MD (2011) Opiate sensitization induces FosB/DeltaFosB expression in prefrontal cortical, striatal and amygdala brain regions. *PLOS ONE* 6: e23574. doi:10.1371/journal.pone.0023574. PubMed: 21886798.
- Teegarden SL, Bale TL (2007) Decreases in dietary preference produce increased emotionality and risk for dietary relapse. *Biol Psychiatry* 61: 1021-1029. doi:10.1016/j.biopsych.2006.09.032. PubMed: 17207778.
- Pitchers KK, Vialou V, Nestler EJ, Laviolette SR, Lehman MN et al. (2013) Natural and drug rewards act on common neural plasticity mechanisms with DeltaFosB as a key mediator. *J Neurosci* 33: 3434-3442. doi:10.1523/JNEUROSCI.4881-12.2013. PubMed: 23426671.
- Werme M, Messer C, Olson L, Gilden L, Thorén P et al. (2002) Delta FosB regulates wheel running. *J Neurosci* 22: 8133-8138. PubMed: 12223567.
- Greenwood BN, Foley TE, Le TV, Strong PV, Loughridge AB et al. (2011) Long-term voluntary wheel running is rewarding and produces plasticity in the mesolimbic reward pathway. *Behav Brain Res* 217: 354-362. doi:10.1016/j.bbr.2010.11.005. PubMed: 21070820.
- Yutsudo N, Kamada T, Kajitani K, Nomaru H, Katogi A et al. (2013) fosB-Null Mice Display Impaired Adult Hippocampal Neurogenesis and Spontaneous Epilepsy with Depressive Behavior. *Neuropsychopharmacology*, 38: 895-906. PubMed: 23303048.
- Ohnishi YN, Ohnishi YH, Hokama M, Nomaru H, Yamazaki K et al. (2011) FosB is essential for the enhancement of stress tolerance and antagonizes locomotor sensitization by DeltaFosB. *Biol Psychiatry* 70: 487-495. doi:10.1016/j.biopsych.2011.04.021. PubMed: 21679928.
- Okamoto M, Hojo Y, Inoue K, Matsui T, Kawato S et al. (2012) Mild exercise increases dihydrotestosterone in hippocampus providing evidence for androgenic mediation of neurogenesis. *Proc Natl Acad Sci U S A* 109: 13100-13105. doi:10.1073/pnas.1210023109. PubMed: 22807478.
- van Praag H, Kempermann G, Gage FH (1999) Running increases cell proliferation and neurogenesis in the adult mouse dentate gyrus. *Nat Neurosci* 2: 266-270. doi:10.1038/6368. PubMed: 10195220.
- Greenwood BN, Foley TE, Day HE, Campisi J, Hammack SH et al. (2003) Freewheel running prevents learned helplessness/behavioral depression: role of dorsal raphe serotonergic neurons. *J Neurosci* 23: 2889-2898. PubMed: 12684476.
- Bjørnebekk A, Mathé AA, Brené S (2005) The antidepressant effect of running is associated with increased hippocampal cell proliferation. *Int J Neuropsychopharmacol* 8: 357-368. doi:10.1017/S1461145705005122. PubMed: 15769301.
- Fanselow MS, Dong HW (2010) Are the dorsal and ventral hippocampus functionally distinct structures? *Neuron* 65: 7-19. doi:10.1016/j.neuron.2009.11.031. PubMed: 20152109.
- Pothuizen HH, Zhang WN, Jongen-Rêlo AL, Feldon J, Yee BK (2004) Dissociation of function between the dorsal and the ventral hippocampus in spatial learning abilities of the rat: a within-subject, within-task comparison of reference and working spatial memory. *Eur J Neurosci* 19: 705-712. doi:10.1111/j.0953-816X.2004.03170.x. PubMed: 14984421.
- Moser E, Moser MB, Andersen P (1993) Spatial learning impairment parallels the magnitude of dorsal hippocampal lesions, but is hardly present following ventral lesions. *J Neurosci* 13: 3916-3925. PubMed: 8366351.
- Bannerman DM, Grubb M, Deacon RM, Yee BK, Feldon J et al. (2003) Ventral hippocampal lesions affect anxiety but not spatial learning. *Behav Brain Res* 139: 197-213. doi:10.1016/S0166-4328(02)00268-1. PubMed: 12642189.
- McHugh SB, Deacon RM, Rawlins JN, Bannerman DM (2004) Amygdala and ventral hippocampus contribute differentially to mechanisms of fear and anxiety. *Behav Neurosci* 118: 63-78. doi:10.1037/0735-7044.118.1.63. PubMed: 14979783.
- Snyder JS, Ramchand P, Rabbett S, Radik R, Wojtowicz JM et al. (2011) Septo-temporal gradients of neurogenesis and activity in 13-month-old rats. *Neurobiol Aging* 32: 1149-1156. doi:10.1016/j.neurobiolaging.2009.05.022. PubMed: 19632743.
- Snyder JS, Radik R, Wojtowicz JM, Cameron HA (2009) Anatomical gradients of adult neurogenesis and activity: young neurons in the ventral dentate gyrus are activated by water maze training. *Hippocampus* 19: 360-370. doi:10.1002/hipo.20525. PubMed: 19004012.
- Vann SD, Brown MW, Erichsen JT, Aggleton JP (2000) Fos imaging reveals differential patterns of hippocampal and parahippocampal subfield activation in rats in response to different spatial memory tests. *J Neurosci* 20: 2711-2718. PubMed: 10729352.
- Lee MC, Okamoto M, Liu YF, Inoue K, Matsui T et al. (2012) Voluntary resistance running with short distance enhances spatial memory related to hippocampal BDNF signaling. *J Appl Physiol* (1985) 113: 1260-1266. doi:10.1152/jappphysiol.00869.2012. PubMed: 22936723.
- van Praag H, Christie BR, Sejnowski TJ, Gage FH (1999) Running enhances neurogenesis, learning, and long-term potentiation in mice. *Proc Natl Acad Sci U S A* 96: 13427-13431. doi:10.1073/pnas.96.23.13427. PubMed: 10557337.
- Anderson BJ, Rapp DN, Baek DH, McCloskey DP, Coburn-Litvak PS et al. (2000) Exercise influences spatial learning in the radial arm maze.

- Physiol Behav 70: 425-429. doi:10.1016/S0031-9384(00)00282-1. PubMed: 11110995.
37. Berchtold NC, Castello N, Cotman CW (2010) Exercise and time-dependent benefits to learning and memory. *Neuroscience* 167: 588-597. doi:10.1016/j.neuroscience.2010.02.050. PubMed: 20219647.
 38. Trejo JL, Llorens-Martín MV, Torres-Alemán I (2008) The effects of exercise on spatial learning and anxiety-like behavior are mediated by an IGF-I-dependent mechanism related to hippocampal neurogenesis. *Mol Cell Neurosci* 37: 402-411. doi:10.1016/j.mcn.2007.10.016. PubMed: 18086533.
 39. Stranahan AM, Khalil D, Gould E (2006) Social isolation delays the positive effects of running on adult neurogenesis. *Nat Neurosci* 9: 526-533. doi:10.1038/nn1668. PubMed: 16531997.
 40. Couillard-Despres S, Winner B, Schaubeck S, Aigner R, Vroemen M et al. (2005) Doublecortin expression levels in adult brain reflect neurogenesis. *Eur J Neurosci* 21: 1-14. doi:10.1111/j.1460-9568.2004.03813.x. PubMed: 15654838.
 41. Rao MS, Shetty AK (2004) Efficacy of doublecortin as a marker to analyse the absolute number and dendritic growth of newly generated neurons in the adult dentate gyrus. *Eur J Neurosci* 19: 234-246. doi:10.1111/j.0953-816X.2003.03123.x. PubMed: 14725617.
 42. Franklin KBJ, Paxinos G (2007) *The Mouse Brain in Stereotaxic Coordinates*. San Diego: Academic Press.
 43. Revest JM, Dupret D, Koehl M, Funk-Reiter C, Grosjean N et al. (2009) Adult hippocampal neurogenesis is involved in anxiety-related behaviors. *Mol Psychiatry* 14: 959-967. doi:10.1038/mp.2009.15. PubMed: 19255582.
 44. Perrotti LI, Hadeishi Y, Ulery PG, Barrot M, Monteggia L et al. (2004) Induction of deltaFosB in reward-related brain structures after chronic stress. *J Neurosci* 24: 10594-10602. doi:10.1523/JNEUROSCI.2542-04.2004. PubMed: 15564575.
 45. Tynan RJ, Naicker S, Hinwood M, Nalivaiko E, Buller KM et al. (2010) Chronic stress alters the density and morphology of microglia in a subset of stress-responsive brain regions. *Brain Behav Immun* 24: 1058-1068. doi:10.1016/j.bbi.2010.02.001. PubMed: 20153418.
 46. Frenois F, Moreau M, O'Connor J, Lawson M, Micon C et al. (2007) Lipopolysaccharide induces delayed FosB/DeltaFosB immunostaining within the mouse extended amygdala, hippocampus and hypothalamus, that parallel the expression of depressive-like behavior. *Psychoneuroendocrinology* 32: 516-531. doi:10.1016/j.psyneuen.2007.03.005. PubMed: 17482371.
 47. Rhodes JS, Garland T Jr., Gammie SC (2003) Patterns of brain activity associated with variation in voluntary wheel-running behavior. *Behav Neurosci* 117: 1243-1256. doi:10.1037/0735-7044.117.6.1243. PubMed: 14674844.
 48. Hawley DF, Leasure JL (2012) Region-specific response of the hippocampus to chronic unpredictable stress. *Hippocampus* 22: 1338-1349. doi:10.1002/hipo.20970. PubMed: 21805528.
 49. Kheirbek MA, Hen R (2011) Dorsal vs ventral hippocampal neurogenesis: implications for cognition and mood. *Neuropsychopharmacology* 36: 373-374. doi:10.1038/npp.2010.148. PubMed: 21116266.
 50. Bednarczyk MR, Aumont A, Décary S, Bergeron R, Fernandes KJ (2009) Prolonged voluntary wheel-running stimulates neural precursors in the hippocampus and forebrain of adult CD1 mice. *Hippocampus* 19: 913-927. doi:10.1002/hipo.20621. PubMed: 19405143.
 51. Liu J, Somera-Molina KC, Hudson RL, Dubocovich ML (2013) Melatonin potentiates running wheel-induced neurogenesis in the dentate gyrus of adult C3H/HeN mice hippocampus. *J Pineal Res* 54: 222-231. doi:10.1111/jpi.12023. PubMed: 23190173.
 52. Matsuda N, Lu H, Fukata Y, Noritake J, Gao H et al. (2009) Differential activity-dependent secretion of brain-derived neurotrophic factor from axon and dendrite. *J Neurosci* 29: 14185-14198. doi:10.1523/JNEUROSCI.1863-09.2009. PubMed: 19906967.
 53. Ernfors P, Bengzon J, Kokaia Z, Persson H, Lindvall O (1991) Increased levels of messenger RNAs for neurotrophic factors in the brain during kindling epileptogenesis. *Neuron* 7: 165-176. doi:10.1016/0896-6273(91)90084-D. PubMed: 1829904.
 54. Nishijima T, Piriz J, Duflot S, Fernandez AM, Gaitan G et al. (2010) Neuronal activity drives localized blood-brain-barrier transport of serum insulin-like growth factor-I into the CNS. *Neuron* 67: 834-846. doi:10.1016/j.neuron.2010.08.007. PubMed: 20826314.
 55. Fernandez AM, Torres-Alemán I (2012) The many faces of insulin-like peptide signalling in the brain. *Nat Rev Neurosci* 13: 225-239. doi:10.1038/nrn3209. PubMed: 22430016.
 56. Léveillé F, Papadia S, Fricker M, Bell KF, Soriano FX et al. (2010) Suppression of the intrinsic apoptosis pathway by synaptic activity. *J Neurosci* 30: 2623-2635. doi:10.1523/JNEUROSCI.5115-09.2010. PubMed: 20164347.
 57. Yi M, Weaver D, Hajnóczky G (2004) Control of mitochondrial motility and distribution by the calcium signal: a homeostatic circuit. *J Cell Biol* 167: 661-672. doi:10.1083/jcb.200406038. PubMed: 15545319.
 58. Guan JS, Su SC, Gao J, Joseph N, Xie Z et al. (2011) Cdk5 is required for memory function and hippocampal plasticity via the cAMP signaling pathway. *PLOS ONE* 6: e25735. doi:10.1371/journal.pone.0025735. PubMed: 21984943.
 59. Chen J, Zhang Y, Kelz MB, Steffen C, Ang ES et al. (2000) Induction of cyclin-dependent kinase 5 in the hippocampus by chronic electroconvulsive seizures: role of [Delta]FosB. *J Neurosci* 20: 8965-8971. PubMed: 11124971.
 60. Barnett DG, Bibb JA (2011) The role of Cdk5 in cognition and neuropsychiatric and neurological pathology. *Brain Res Bull* 85: 9-13. doi:10.1016/j.brainresbull.2010.11.016.