

Research Article

Physiological Constants of the Entomopathogenic Bacterium *Xenorhabdus nematophila* Determined by Microbial Growth Kinetics

Rinu Kooliyottil, Floyd Inman III, Sivanadane Mandjiny, and Len Holmes

Sartorius Stedim Biotechnology Laboratory, Biotechnology Research and Training Center, University of North Carolina at Pembroke, Pembroke, NC 28372-1510, USA

Correspondence should be addressed to Rinu Kooliyottil; rinukmicro@gmail.com

Received 28 February 2014; Accepted 8 April 2014; Published 23 April 2014

Academic Editors: G. Koraimann, S. J. Suh, and X. Yu

Copyright © 2014 Rinu Kooliyottil et al. This is an open access article distributed under the Creative Commons Attribution License, which permits unrestricted use, distribution, and reproduction in any medium, provided the original work is properly cited.

Xenorhabdus nematophila, an entomopathogenic bacterium that symbiotically associates with the entomoparasitic nematode *Steinernema carpocapsae*, was studied to determine its physiological parameters of glucose utilization. *X. nematophila* was cultured in chemically defined media containing various concentrations of glucose under optimal conditions utilizing a two-liter fermentation system. Specific growth rates were obtained from each glucose batch. Specific growth rates and their associated glucose concentrations were used to determine physiological parameters. These parameters include the bacterium's substrate utilization constant (K_s) and its maximum specific growth rate (μ_{\max}). The bacteria exhibited a K_s value of 2.02 mg/L suggesting that *X. nematophila* has a high affinity for glucose. The μ_{\max} of *Xenorhabdus* was determined to be 1.03 h⁻¹. Further research is needed to determine if microbial affinities to different substrates have any influence on biological relationships (symbiosis, pathogenicity, parasitism, etc.) between prokaryotes and higher organisms.

1. Introduction

Xenorhabdus nematophila is a Gram-negative, rod shaped, endosymbiotic bacterium found exclusively within the gut of the entomoparasitic nematode *Steinernema carpocapsae*. Notably, *X. nematophila* is an entomopathogenic member of Enterobacteriaceae and is extremely lethal to its insect host resulting in death within 24–48 hours [1, 2]. In the natural environment, the nematode-bacterial complex is crucial for insect pathogenicity and survival of the symbiotic pair. Due to the pair's interesting biological characteristics, they have become model organisms for studying nematode symbiosis, host-bacterium interactions, and parasitism [3]. These nematode-bacterial complexes are mass produced and commercialized for use as biological insecticides [4, 5].

Inside of *S. carpocapsae*, cells of *X. nematophila* are in a dormant phase and therefore do not proliferate within the nematode gut. To the contrary, once the nematode gains access to the insect hemolymph, regurgitation of its symbiotic bacteria occurs. It is inside of the hemolymph where bacteria proliferation occurs. In order to mass produce entomoparasitic nematodes *in vitro*, it is crucial to understand

the physiology of the bacterial symbiont to various substrates that are found within insect hemolymph and potential nematode growth media. In this report, glucose, a primary substrate for growth, proliferation, and function in most organisms, is used to study growth kinetics of *X. nematophila*. To the authors' knowledge there are no reports presently available describing growth and substrate kinetics of *X. nematophila*. In the present study, *X. nematophila* was cultivated in batch mode containing defined media supplemented with various glucose concentrations. Glucose is provided as the sole carbon and energy source within the media. Physiological constants of *X. nematophila* such as the substrate utilization constant (K_s) and maximum specific growth rate (μ_{\max}) were determined.

2. Materials and Methods

2.1. Bacterial Isolation. *X. nematophila* was indirectly isolated on nutrient agar plates streaked with the hemolymph of a nematode-infected larva of *Galleria mellonella*, in similar

manner to Inman III and Holmes [6]. Nutrient agar was composed of (g/L) beef extract (3), digested gelatin (5), and agar (15). The identity of the bacterial symbiont was confirmed by several morphological and microscopic techniques [7, 8]. The reference strain *X. nematophila* XQ1 ATCC 39497 was used to compare bacterial characteristics and was obtained from the American Type Culture Collection (Manassas, Virginia, USA).

2.2. Kinetics Media. Microbial kinetics of *X. nematophila* was studied in batches of 1.5 liters of defined liquid media containing (mM) NaCl (50), MgSO₄ (5), KH₂PO₄ (50), HEPES (25), NH₄Cl (30), Na₂MoO₄·2H₂O (0.025), MnCl₂·4H₂O (0.025), and FeCl₃·6H₂O (0.025) to determine K_s and μ_{max} . Each batch was supplemented with increasing concentrations of glucose (1.8 mg/L, 9 mg/L, 18 mg/L, and 90 mg/L) to obtain respective growth rates (μ). During media preparation, glucose concentrated stocks were prepared and autoclaved separately. The obtained data was further used to determine physiological constants (K_s and μ_{max}).

2.3. Fermentation Parameters and Experiment. Batches were carried out in a two-liter Biostat A plus fermentation system (Sartorius stedim, Germany). Temperature, agitation, pH, and aeration were maintained at 28°C, 200 rpm, 7.30, and 1 vvm, respectively. A vvm is a unit that is equivalent to one volume of gas (liters per minute) added to the one volume of a liquid (L). Optical density was measured with a submersible near-infrared ASD19-N optical density probe (optek-Danulat, Inc., Germany) and measured in concentration units (cu).

Each experimental batch was inoculated at 1.0% concentrations. Overnight cultures were grown within the same chemically defined media with respective glucose concentrations for the upcoming growth experiment. Prior to each inoculation, overnight cultures were washed thrice with phosphate buffered saline, pH 7.2, in order to prevent carryover of any residual glucose from overnight cultures into the growth experiment. Additionally, overnight cultures were harvested in either late deceleration or early stationary phases based upon previous time/growth experiments within the same media (data not shown).

3. Results and Discussion

Batch growth curves of *X. nematophila*, for various glucose concentrations (1.8, 9.0, 18.0, and 90.0 mg/L) are depicted in Figure 1. To determine the specific growth rate of each batch, the natural log of concentration units (ln cu) was plotted against time to linearize exponential growth phases [9]. Note that upon taking natural logs of decimals the resultant values are negative; however, taking the absolute value of (ln cu) may be an acceptable practice. Specific growth rates are equivalent to the slope of the linearized exponential growth phase and were determined graphically. Specific growth rates from each glucose batch are reported in order of increasing glucose concentrations: 1.8 mg/L (0.49 h⁻¹), 9.0 mg/L (0.78 h⁻¹), 18 mg/L (0.97 h⁻¹), and 90 mg/L (1.02 h⁻¹).

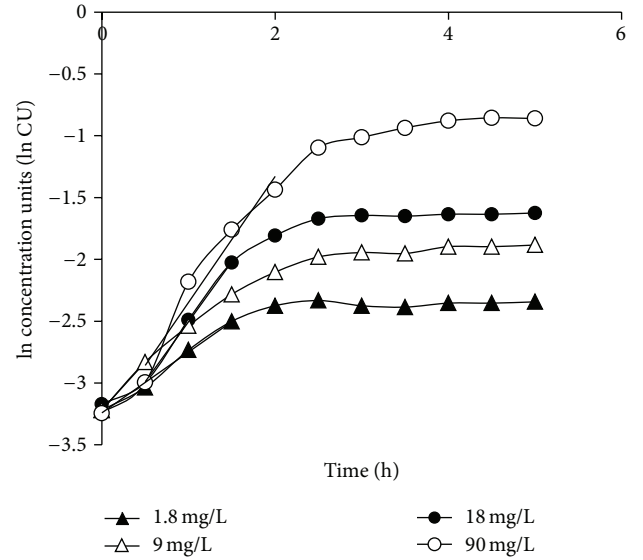


FIGURE 1: Growth curves of *X. nematophila* in defined medium with varying concentrations of glucose. Each glucose batch resulted in a specific growth rate: 1.8 mg/L (0.49 h⁻¹), 9 mg/L (0.78 h⁻¹), 18 mg/L (0.97 h⁻¹), and 90 mg/L (1.02 h⁻¹).

Monod stated that the specific growth rate (μ) of a bacterial culture is dependent upon the nutrient concentration [s] and can be modeled as seen in (1) below [10]. The model plots various substrate concentrations and their resultant specific growth rates as a consequence; a hyperbolic function is observed. The slope of the function is equivalent to the maximum specific growth rate (μ_{max}) divided by the sum of the substrate utilization constant (K_s) and the substrate concentration used [s]. By observing the Monod plot of the study's data, μ did not increase significantly (~ 0.05 h⁻¹) when glucose was increased from 18 mg/L to 90 mg/L (Figure 2):

$$\mu = \frac{\mu_{max}}{K_s + [s]} \cdot [s]. \quad (1)$$

Equation (1) shows the Monod equation relating the specific growth rate (μ) to substrate concentration ([s]). The terms μ_{max} (maximum specific growth rate) and K_s (substrate utilization constants) are physiological constants of the organism and are determined mathematically.

The growth data shown in Figure 2 was utilized to calculate values of glucose K_s and μ_{max} constants for *X. nematophila*. To mathematically determine the constants, the Monod equation was first linearized. Since the Monod equation is similar to the Michaelis-Menton equation used in enzyme kinetics, the same linearization models of the Michaelis-Menton equation can be used. From the three linearization models (Lineweaver-Burk, Eadie-Hofstee, and Hanes-Wolfe), the Eadie-Hofstee linearization (2) was used for various reasons [11]:

$$\mu = -K_s \left(\frac{\mu}{[s]} \right) + \mu_{max}. \quad (2)$$

Equation (2) shows the Eadie-Hofstee linearization of the Monod equation. The resultant linearization of the Monod

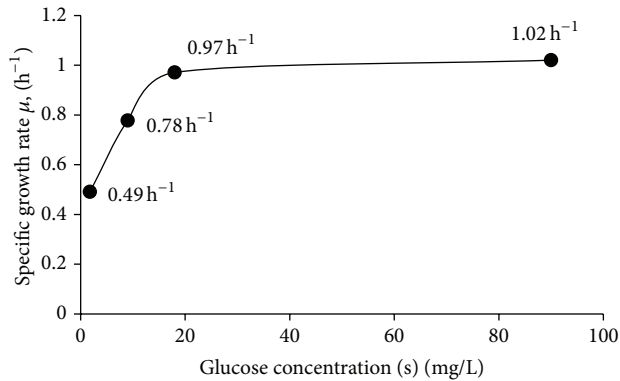


FIGURE 2: Monod plot of specific growth rates of *X. nematophila* as function of varying glucose concentrations. Notice how the plot approaches to an asymptotic value. The value of this upper asymptote, as described by Monod, is equivalent to the maximum specific growth rate (μ_{\max}) of the organism when substrate concentrations are not limiting [10].

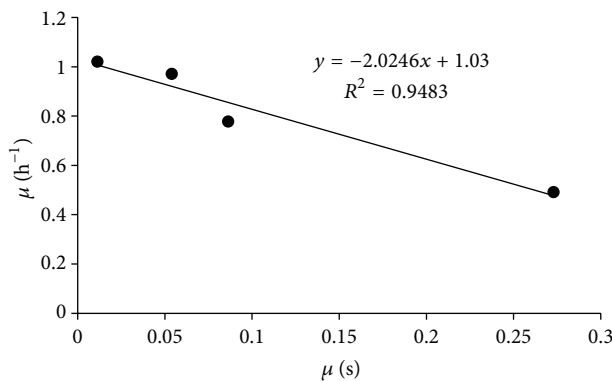


FIGURE 3: Eadie-Hofstee linearization plot to calculate the physiological constants K_s and μ_{\max} . By plotting μ as a function of μ/s , the resulting slope is equivalent to the negative value of K_s ; therefore, the glucose K_s value for *X. nematophila* is reported to be 2.02 mg/L. According to (2), μ_{\max} is defined as the y-intercept; therefore, μ_{\max} for *X. nematophila* was calculated to be 1.03 h^{-1} .

equation simply depicts the slope as the negative K_s value with a y-intercept of μ_{\max} . This is true when the specific growth (μ) is plotted as a function of the same specific growth rate divided by its corresponding substrate concentration ($[s]$).

The glucose K_s was obtained from the slope of the Eadie-Hofstee diagram by plotting μ as a function of $\mu/[s]$. According to the Eadie-Hofstee plot, the glucose K_s and μ_{\max} values were mathematically determined to be 2.02 mg/L and 1.03 h^{-1} , respectively (Figure 3). At this time, there are no other publications that report physiological constants (K_s and μ_{\max}) for *X. nematophila* and only one publication exists for *Photobacterium luminescens*, another entomopathogenic bacterium associated with the entomoparasitic nematode *Heterorhabditis bacteriophora* [9]. Bowen et al. reported the glucose K_s for *P. luminescens* (1.95 mg/L) and μ_{\max} (0.96 h^{-1}) [9].

4. Conclusion

The present study is the initiation of understanding the physiological nature of the entomopathogenic bacterium *X. nematophila* in regard to glucose utilization within the insect hemolymph. Similar research involving different substrates may provide clues to understand how *X. nematophila* and other bacterial symbionts of entomoparasitic nematodes utilize the nutrients found within host insect hemolymph. Some of the nutrients found within insect hemolymph are obviously utilized for bacterial growth and proliferation that may also be involved with insect pathogenicity [9]. Monod describes K_s as a measure of microbial affinity towards the substrate [10]. Monod adds that the lower the K_s value is the higher the microbial affinity is towards that particular substrate. Additionally, in regard to μ_{\max} , Monod states that once a culture's specific growth rate reaches that of the maximum specific growth rate, the rate will no longer increase regardless if substrate concentration is increased [10]. Monod also offers conditions that result in a growth rate that is equivalent to μ_{\max} ; then, substrate concentrations are not limited and can support maximum population density.

Future research is required to understand how affinities to different substrates can be associated with different relationships (symbiotic, pathogenic, parasitic, etc.) between prokaryotes and higher organisms. In this study, the glucose K_s value was found to be very low at 2.02 mg/L, which suggests that *X. nematophila* has a high glucose affinity. In comparison to *P. luminescens*, the reported glucose K_s was 1.95 mg/L, suggesting that the K_s determined for *X. nematophila* is within range [9]. Bowen et al. speculate that this high affinity towards glucose may be useful as a biological indicator of pathogenicity that may correlate to how quickly these entomopathogenic bacteria can proliferate in nonlimiting conditions within the insect host [9].

Conflict of Interests

The authors declare that there is no conflict of interests regarding the publication of this paper.

Acknowledgments

Financial support was provided by the UNC Pembroke Office of the Provost and Academic Affairs, UNC Pembroke Department of Chemistry and Physics, Robeson County Farm Bureau, North Carolina Biotechnology Center, National Collegiate Inventor and Innovators Alliance, and Sartorius-stedim NA. Special thanks is given to Dr. Michael Menefee and the UNC Pembroke Thomas Family Center for Entrepreneurship for providing assistance in obtaining equipment.

References

- [1] G. M. Thomas and G. O. Poinar Jr., "*Xenorhabdus* gen. nov., a genus of entomopathogenic, nematophilic bacteria of the family Enterobacteriaceae," *International Journal of Systematic Bacteriology*, vol. 29, no. 4, pp. 352–360, 1979.

- [2] A. F. Bird and R. J. Akhurst, "The nature of the intestinal vesicle in nematodes of the family steinernematidae," *International Journal for Parasitology*, vol. 13, no. 6, pp. 599–606, 1983.
- [3] E. I. Vivas and H. Goodrich-Blair, "*Xenorhabdus nematophilus* as a model for host-bacterium interactions: *rpoS* is necessary for mutualism with nematodes," *Journal of Bacteriology*, vol. 183, no. 16, pp. 4687–4693, 2001.
- [4] R.-U. Ehlers, "Mass production of entomopathogenic nematodes for plant protection," *Applied Microbiology and Biotechnology*, vol. 56, no. 5-6, pp. 623–633, 2001.
- [5] N. Chavarría-Hernández, E. Ortega-Morales, A. Vargas-Torres, J.-C. Chavarría-Hernández, and A.-I. Rodríguez-Hernández, "Submerged monoxenic culture of the entomopathogenic nematode, *Steinernema carpocapsae* CABA01, in a mechanically agitated bioreactor: evolution of the hydrodynamic and mass transfer conditions," *Biotechnology and Bioprocess Engineering*, vol. 15, no. 4, pp. 580–589, 2010.
- [6] F. L. Inman III and L. D. Holmes, "The effects of trehalose on the bioluminescence and pigmentation of the phase I variant of *Photorhabdus luminescens*," *Journal of Life Sciences*, vol. 6, pp. 119–129, 2012.
- [7] R. J. Akhurst, "Morphological and functional dimorphism in *Xenorhabdus* spp., bacteria symbiotically associated with the insect pathogenic nematodes *Neoaplectana* and *Heterorhabditis*," *Journal of General Microbiology*, vol. 121, pp. 303–309, 1980.
- [8] Y. Wang, A. L. Bilgrami, D. Shapiro-Ilan, and R. Gaugler, "Stability of entomopathogenic bacteria, *Xenorhabdus nematophila* and *Photorhabdus luminescens*, during *in vitro* culture," *Journal of Industrial Microbiology and Biotechnology*, vol. 34, no. 1, pp. 73–81, 2007.
- [9] M. Bowen, D. Co, F. Inman, and L. Holmes, "Microbial kinetics of *Photorhabdus luminescens* in glucose batch cultures," *Explorations*, vol. 7, pp. 14–22, 2012.
- [10] J. Monod, "The growth of bacterial cultures," *Annual Review of Microbiology*, vol. 3, pp. 371–394, 1949.
- [11] A. Cornish-Bowden, "Introduction to enzyme kinetics," in *Fundamentals of Enzyme Kinetics*, pp. 16–36, Butterworth & Co., London, UK, 1981.