





Reelin Regulates Neuronal Excitability through Striatum-Enriched Protein Tyrosine Phosphatase (STEP₆₁) and Calcium Permeable AMPARs in an NMDAR-Dependent Manner

 Murat S. Durakoglugil,^{1,2}  Catherine R. Wasser,^{1,2} Connie H. Wong,^{1,2}  Theresa Pohlkamp,^{1,2}  Xunde Xian,⁵ Courtney Lane-Donovan,⁶ Katja Fritschle,⁷ Lea Naestle,⁸ and Joachim Herz^{1,2,3,4}

¹Department of Molecular Genetics, ²Center for Translational Neurodegeneration Research, ³Departments of Neuroscience and, ⁴Neurology and Neurotherapeutics, University of Texas Southwestern Medical Center, Dallas, Texas 75390, ⁵Institute of Cardiovascular Sciences and Key Laboratory of Molecular Cardiovascular Sciences, Ministry of Education, Peking University, Beijing 100871, China, ⁶Weill Institute for Neurosciences, University of California San Francisco, San Francisco, California 94158, ⁷Technical University of Munich, 80333 Munich, Germany, and ⁸Ludwig-Maximilians University of Munich, 80539, Munich, Germany

Alzheimer's disease (AD) is a progressive neurodegenerative disease marked by the accumulation of amyloid- β ($A\beta$) plaques and neurofibrillary tangles. $A\beta$ oligomers cause synaptic dysfunction early in AD by enhancing long-term depression (LTD; a paradigm for forgetfulness) via metabotropic glutamate receptor (mGluR)-dependent regulation of striatum-enriched tyrosine phosphatase (STEP₆₁). Reelin is a neuromodulator that signals through ApoE (apolipoprotein E) receptors to protect the synapse against $A\beta$ toxicity (Durakoglugil et al., 2009). Reelin signaling is impaired by ApoE4, the most important genetic risk factor for AD, and $A\beta$ -oligomers activate metabotropic glutamate receptors (Renner et al., 2010). We therefore asked whether Reelin might also affect mGluR-LTD. To this end, we induced chemical mGluR-LTD using DHPG (Dihydroxyphenylglycine), a selective mGluR5 agonist. We found that exogenous Reelin reduces the DHPG-induced increase in STEP₆₁, prevents the dephosphorylation of GluA2, and concomitantly blocks mGluR-mediated LTD. By contrast, Reelin deficiency increased expression of Ca²⁺-permeable GluA2-lacking AMPA receptors along with higher STEP₆₁ levels, resulting in occlusion of DHPG-induced LTD in hippocampal CA1 neurons. We propose a model in which Reelin modulates local protein synthesis as well as AMPA receptor subunit composition through modulation of mGluR-mediated signaling with implications for memory consolidation or neurodegeneration.

Key words: AMPA receptor; ApoE; NMDA receptor; Reelin; STEP; synaptic plasticity

Significance Statement

Reelin is an important neuromodulator, which in the adult brain controls synaptic plasticity and protects against neurodegeneration. Amyloid- β has been shown to use mGluRs to induce synaptic depression through endocytosis of NMDA and AMPA receptors, a mechanism referred to as LTD, a paradigm of forgetfulness. Our results show that Reelin regulates the phosphatase STEP, which plays an important role in neurodegeneration, as well as the expression of calcium-permeable AMPA receptors, which play a role in memory formation. These data suggest that Reelin uses mGluR LTD pathways to regulate memory formation as well as neurodegeneration.

Received Feb. 21, 2021; revised June 13, 2021; accepted July 8, 2021.

Author contributions: M.S.D. and J.H. designed research; M.S.D., X.X., T.P., C.L.-D., and L.N. performed research; M.S.D., T.P., C.R.W., C.H.W., C.L.-D., and K.F. analyzed data; M.S.D., C.R.W., T.P., C.H.W. and J.H. wrote the paper.

This work was supported by the National Institutes of Health National Institute on Aging (NIA) Grant 1RF1 AG053391-01; National Heart, Lung and Blood Institute Grant 5R37 HL063762-20; National Institute of Neurological Disorders and Stroke/NIA Grants 5R01 NS093382-05 and NS108115-02; BrightFocus Foundation Grants A20135245 and A20163965; Harrington Discovery Institute; Internal UTSW grant; Blue Field Project to Cure Frontotemporal Dementia to J.H., Darrell K. Royal Research Fund to M.S.D.; NIA Grant F30AG047799 to C.L.-D.; NIA Grant F31AG067708 to C.H.W.; Voswinkel Rechtsanwaltel Studentship to K.F.; and Reimold Education Scholarship to L.N. We thank Barsha Subba Aangdembe for assistance with surface biotinylation experiments, Austin Marckx, Anna Middleton,

Brianna Escobar, Rebekah Hewitt, Tamara Terrones, Huichuan Reyna, Isaac Rocha, Alisa Gillon, Travis Wolff, Emily Boyle, Alexander Brennan, and Angelica Esparza for technical assistance and Kimberly Huber for critical discussions.

The authors declare no competing financial interests.

Correspondence should be addressed to Murat S. Durakoglugil at Murat.Durakoglugil@UTSouthwestern.edu or Joachim Herz at Joachim.herz@UTSouthwestern.edu.

<https://doi.org/10.1523/JNEUROSCI.0388-21.2021>

Copyright  2021 Durakoglugil et al.

This is an open-access article distributed under the terms of the Creative Commons Attribution 4.0 International license, which permits unrestricted use, distribution and reproduction in any medium provided that the original work is properly attributed.

Introduction

Alzheimer's disease (AD) is a socioeconomic burden of sweeping proportions. Dysregulation of synaptic function occurs in AD before overt clinical manifestation. One of the main characteristics of AD are amyloid- β ($A\beta$) plaques. $A\beta$ oligomers cripple the synapses through multiple modes of action and hijack the core neuronal machinery leading to inhibition of long-term potentiation (LTP) and enhancement of long-term depression (LTD), paradigms for learning and memory or forgetfulness, respectively.

At excitatory synapses, glutamate binds to the ionotropic AMPA and NMDA receptors (AMPA and NMDAR, respectively) as well as metabotropic glutamate receptors (mGluRs). AMPARs regulate fast synaptic transmission under resting conditions. NMDARs are coincidence detectors that flux Ca^{2+} on activation, which in turn regulates LTP through transcriptional mechanisms. In contrast, mGluR activation regulates LTD by modulating local synaptic mRNA translation. (Ebert and Greenberg, 2013).

AMPA receptors are tetramers consisting of combinations of four subunits: GluA1–4. GluA2 is critical for determining AMPAR function, and GluA2 depletion ablates mGluR-LTD starting at the age of 3 months in mice (Zhou et al., 2011; Cao et al., 2017; 2018). During LTD, one of the main translated proteins is striatal-enriched tyrosine phosphatase (STEP₆₁). Phosphorylation of STEP₆₁ regulates synaptic plasticity by dephosphorylation of the NMDAR subunit GluN2B and AMPAR subunit GluA2, which lead to the endocytosis of the receptors (Pelkey et al., 2002; Snyder et al., 2005; Zhang et al., 2008). Importantly, $A\beta$ induces endocytosis of GluA2-containing AMPARs, mimicking and occluding mGluR-dependent LTD (Hsieh et al., 2006). In AD patients and mouse models, STEP₆₁ levels are increased (Kurup et al., 2010). Blocking mGluR5 rescues cognitive impairment in an AD mouse model (Renner et al., 2010; Rammes et al., 2011; Chen et al., 2013). Importantly, the inhibition (Xu et al., 2014) or genetic knockdown (Zhang et al., 2011) of STEP₆₁ ameliorates the behavioral and cognitive impairments seen in AD mouse models, implicating STEP₆₁ as a downstream target of $A\beta$ and mGluR5.

We have shown previously that the extracellular signaling protein Reelin, by binding to ApoE (apolipoprotein E) receptors, can antagonize $A\beta$ at the synapse (Durakoglugil et al., 2009) and protect neurons against $A\beta$ toxicity *in vivo* (Lane-Donovan et al., 2015). This Reelin protective effect is inhibited by ApoE4, the most important genetic risk factor for late-onset AD, as it impairs the recycling of ApoE2 and glutamate receptors (Chen et al., 2010; Xian et al., 2018). Reelin regulates the surface expression of both AMPARs (Qiu et al., 2006a; Qiu and Weeber, 2007) and NMDAR (Weeber et al., 2002; Chen et al., 2005; Durakoglugil et al., 2009) and is essential for the NMDAR subunit switch during development (Groc et al., 2007).

In this current study, we investigated whether Reelin can modulate mGluR-LTD by either applying exogenous Reelin on wild-type hippocampal slices or by using Reelin-deficient slices and determining STEP₆₁ and AMPAR composition. We used a mouse model with induced genetic depletion of Reelin [conditional KO (cKO)], which has an architecturally normal adult brain (Lane-Donovan et al., 2015). Previously, we have shown that Reelin cKO mice have enhanced LTP, are hypersensitive to $A\beta$ -induced synaptic suppression, and have profound memory and learning disabilities in the presence of low $A\beta$ levels (Lane-Donovan et al., 2015), which can be reversed by treating the mice for 1 month with the g-secretase modulator NGP555

(Kounnas et al., 2017). Here, we now show that acute Reelin application reduces both mGluR-LTD and STEP₆₁ levels. Reelin cKO mice, on the other hand, display increased STEP₆₁ levels and increased expression of surface GluA2-lacking AMPARs, which results in the occlusion of mGluR-LTD. Overall, our data demonstrate that Reelin, through regulation of local protein synthesis, controls the assembly of AMPAR subunits on the synaptic surface, with implications for memory consolidation and neurodegeneration.

Materials and Methods

Animals. All mice were housed under a 12:12 light/dark cycle and fed a normal chow diet. All animals were killed by inhalation of isoflurane followed by decapitation according to strict regulations set by the National Institutes of Health Guide for the Care and Use of Laboratory Animals and the University of Texas Southwestern Animal Care and Use Committee. Pregnant Sprague Dawley rats were purchased from Charles River Laboratories. The Reelin conditional knock-out animals have been described previously (Lane-Donovan et al., 2015). Briefly, Exon1 of the *Reln* gene was flanked by loxP sites. Homozygous Reelin-floxed (*Reln^{fl/fl}*) mice were then crossed with transgenic CAG-Cre^{ERT2} mice (Hayashi and McMahon, 2002). To induce conditional Reelin knockout, Cre-positive *Reln^{fl/fl}* mice were injected with tamoxifen (Reelin cKO) as described (Lane-Donovan et al., 2015). As a control, Cre-negative *Reln^{fl/fl}* mice were also injected with tamoxifen. For electrophysiological recordings, tamoxifen injections were performed at 4 weeks of age. For biochemical analysis, tamoxifen injections were performed at 8 weeks of age by daily intraperitoneal injections for 5 d with 135 mg/kg tamoxifen (Sigma) dissolved in sunflower oil and 10% ethanol. Electrophysiological recordings and biochemical analysis were performed at 3 or 6 months, as indicated. This gave us the advantage of testing the *in vivo* function of endogenous Reelin in adult mice after the end of the neuronal migration period for which Reelin is required (Herz and Chen, 2006).

Recombinant protein. Recombinant Reelin was secreted by 293HEK cells stably transfected with the mouse Reelin cDNA plasmid (pCrI). Reelin was purified from the media as described (Weeber et al., 2002).

In vitro electrophysiology (whole-cell patch-clamp recordings). Cells were recorded from the CA1 region of 2- 3-month-old mice. The extracellular solution contained the following (in mM): 124 NaCl, 3 KCl, 1.25 NaH₂PO₄, 26 NaHCO₃, 10 D-glucose, 2 CaCl₂, 1 MgSO₄. The intracellular solution contained the following (in mM): 130 CsMeSO₄, 5 NaCl, 10 HEPES, 1 CaCl₂, 4 MgCl₂, 0.5 EGTA, four MgATP, 5 QX314, 0.3 GTP and 0.1 spermine (pH adjusted with CsOH). Spontaneous recordings of AMPAR currents were performed at room temperature (26°C) in the presence of the NMDAR antagonist D-AP5 (D-(-)-2-Amino-5-phosphonopentanoic acid; 50 μ M) and GABA receptor antagonist picrotoxin (50 μ M). Stimulus intensity was adjusted to evoke currents approximately one-third of the maximal current response, typically resulting in currents between 100 and 200 pA. Current voltage curves were obtained by plotting the current response at different holding potentials (−70 to +50 mV with 10 mV increments). The rectification index (RI) was calculated as the ratio of the average peak current responses at −70 mV to those at 50 mV. NASPM [1-Naphthylacetyl spermine trihydrochloride; philanthotoxins (PhTX), 100 μ M] was applied after a 20 min stable baseline for ~20 min and washed out for at least 20 min.

Extracellular field recordings. Hippocampal slices were prepared from 3-month-old Reelin cKO mice and Cre-negative, tamoxifen-injected littermate controls. The brains were quickly removed and placed in cold high sucrose cutting solution containing the following (in mM): 110 sucrose, 60 NaCl, 3 KCl, 1.25 NaH₂PO₄, 28 NaHCO₃, 0.5 CaCl₂, 5 glucose, 0.6 Ascorbic acid, 7 MgSO₄. Transverse sections of 400 μ m were cut using a vibratome. Slices were then transferred into an incubation chamber containing 50% artificial CSF (aCSF) containing the following (in mM): 124 NaCl, 3 KCl, 1.25 NaH₂PO₄, 26 NaHCO₃, 10 D-glucose, 2 CaCl₂, 1 MgSO₄ and 50% sucrose cutting solution. In the recording chamber, slices were perfused with aCSF

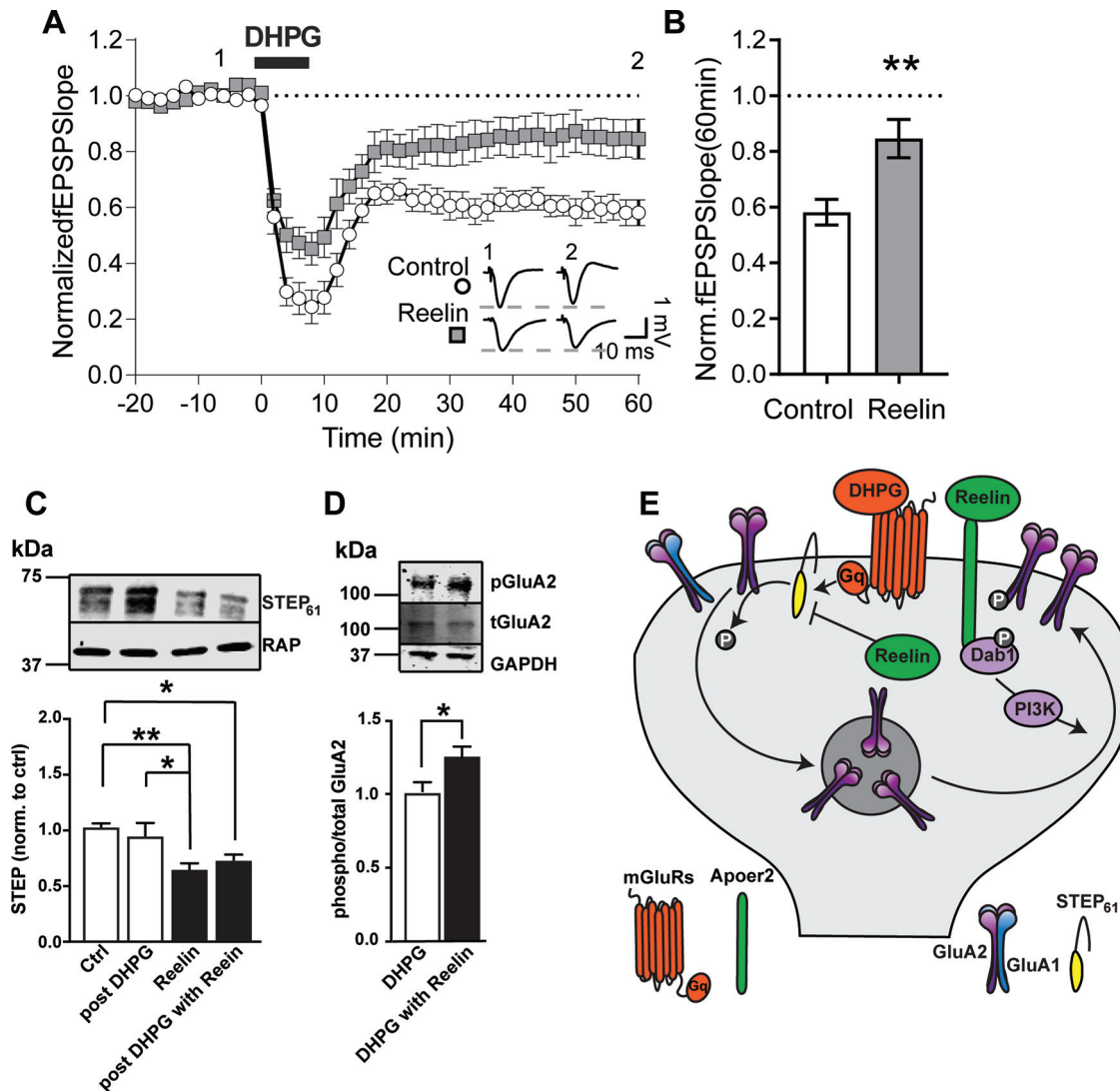


Figure 1. Reelin blocks DHPG-induced LTD through regulating STEP and phospho-GluA2 levels. **A**, Field EPSPs were recorded from stratum radiatum in the presence of AP-5 (50 μ M) and picrotoxin (10 μ M). Mock or Reelin was added 10 min before recordings and was present throughout the experiment (–30 to +60). Stable baseline fEPSP was recorded for 20 min (–20 to 0 min) before DHPG application and normalized to 1. DHPG was applied for 10 min (0–10 min). Sample traces before and after (–10, +40 min) DHPG in the presence or absence of Reelin are shown (bottom right inset; 3-month-old mice; Control, $n = 14$ slices, $a = 8$ animals; Reelin, $n = 11$, $a = 6$). Two-way RM ANOVA: Reelin-int: $F_{(1,23)} = 9.68$, $p = 0.0049$; Sidak's *post hoc*: Control versus Reelin, 50–60 min: $p = 0.0493$ – 0.0016 , time-int: $F_{(40,920)} = 55.8$, $p < 0.0001$; Sidak's *post hoc*: Control: –20 versus 60, $p < 0.0001$; Reelin: –20 versus 60 min, $p = 0.3385$. -int, -interaction. **B**, Bar graph shows the fEPSP slope average of the last 10 min of recording from **A** (50–60 min). Unpaired Student's *t* test was performed on the average of control slices or Reelin-treated slices 50 min after DHPG treatment (Control $n = 14$, Reelin $n = 11$, $p = 0.0031$). **C**, Exogenous Reelin decreases STEP₆₁ in wild-type slice from 3-month-old mice treated with or without DHPG for 10 min followed by a washout (post-DHPG). Slices were oxygenated in aCSF containing picrotoxin and AP-5 in a six-well plate. Twenty minutes after pretreatment with or without Reelin, slices were moved to DHPG-containing wells for 10 min. DHPG was washed out, and slices were incubated for an additional 30 min with or without Reelin. Total STEP₆₁ levels were analyzed by immunoblotting and quantified by averaging seven independent experiments from seven different mice (bar graph). ANOVA $F_{(3,24)} = 5.591$ $p = 0.0047$. Holm–Sidak multiple comparisons test shows a significant difference between Control versus Reelin ($p = 0.0096$) and Control versus post-DHPG with Reelin ($p = 0.0482$). All data are plotted as mean \pm SEM. **D**, Exogenous Reelin reverses DHPG-induced reduction of phospho-GluA2 (pGluA2) in rat primary neurons. Neurons were pretreated for 30 min in aCSF containing picrotoxin and AP-5. Reelin and/or DHPG was added for an additional hour before neurons were harvested for Western blot. The quantification of pGluA2/tGluA2 is shown in the bar graph (bottom; $n = 4$ independent cultures, $p = 0.03$, unpaired *t* test). All data are plotted as mean \pm SEM. **E**, Reelin activates SFK and stabilizes GluA2 on the cell surface, whereas STEP₆₁ dephosphorylates and removes GluA2 from the surface. We propose a model in which Reelin blocks mGluR-dependent protein synthesis and LTD through STEP₆₁. Error bars represent the standard error of the mean (SEM). (* $p < 0.05$, ** $p < 0.01$).

only. For stimulation, concentric bipolar electrodes were used (catalog #CBBRC75, FHC) and placed into the stratum radiatum. Experiments were performed in the presence of D-AP5 (50 μ M) and picrotoxin (10 μ M). Twenty minutes after stable baseline, DHPG (100 μ M) was applied for 10 minutes. Stimulus intensity was set at 40–60% of maximum response and delivered through an Isolated Pulse Stimulator (Model 2100, A-M. Systems). A custom-written program in LabVIEW 7.0 was used for recording and analysis of LTD experiments.

Pharmacological treatment of slices. Experiments were performed in six-well plates (see above, Extracellular field recordings). Briefly, 300 μ M WT slices were continuously bubbled with 95% O₂ and 5% CO₂ in aCSF

containing AP-5 and picrotoxin (Fig. 1C). Four of the slices obtained were incubated with 50 μ M AP-5 and 10 μ M picrotoxin; the other four were incubated with 5 nM Reelin with AP-5 and picrotoxin. Twenty minutes later, two of the slices from both the control group and the Reelin-treated group were incubated with 100 μ M DHPG (AP-5+picrotoxin \pm Reelin). Ten minutes later, slices were washed in either AP-5- and picrotoxin-containing aCSF or in AP-5-, picrotoxin-, and Reelin-containing aCSF for 30 min, and then collected for biochemical analysis.

For the experiments on Reelin cKO (Cre-positive mice injected with tamoxifen) and Control (Cre-negative littermates injected with tamoxifen; see Fig. 5) slices were bubbled with 95% O₂ and 5% CO₂ in

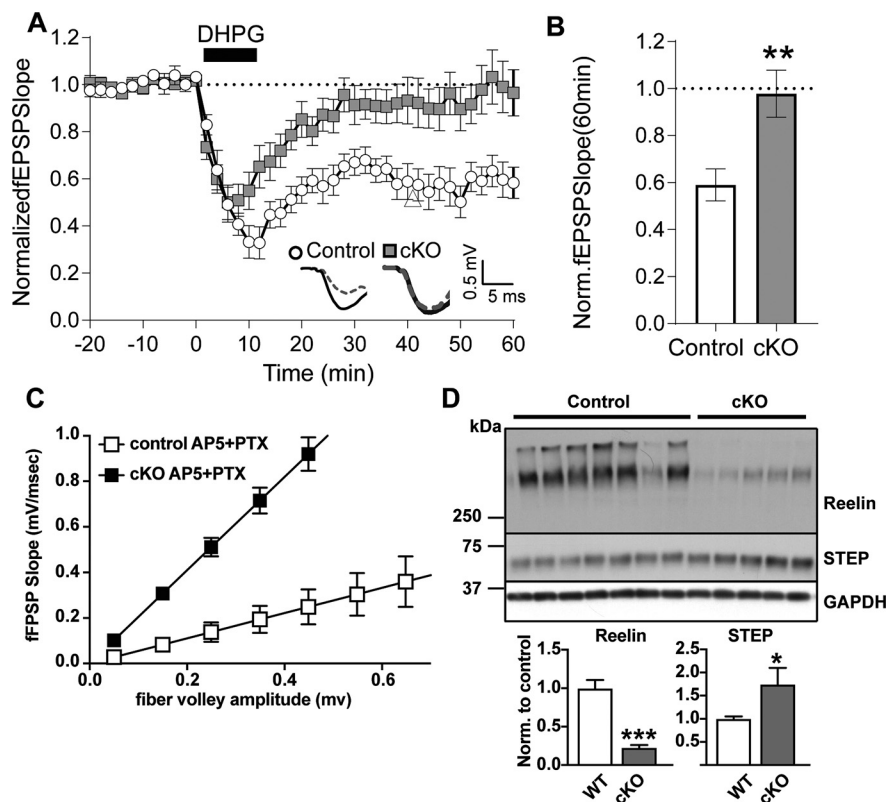


Figure 2. mGluR-LTD is occluded when Reelin is conditionally knocked out. **A**, Normalized fEPSP slopes before and after DHPG treatment in 3-month-old Reelin cKO and Control slices in CA1 region in the presence of AP-5 ($50 \mu\text{M}$) and picrotoxin ($10 \mu\text{M}$). Sample fEPSP traces before and after DHPG (inset, bottom right). (Control, $n = 11$ slices, $a = 3$ animals; cKO, $n = 13$, $a = 3$; two-way RM ANOVA: Reelin-int: $F_{(1,22)} = 10.68$, $p = 0.0035$; Holm–Sidak *post hoc*: Control cKO: 38–60 min, $p = 0.0441$ – 0.001 , time-int: $F_{(40,880)} = 20.39$, $p < 0.0001$; Holm–Sidak *post hoc*: Control: -20 vs 60 min, $p < 0.0001$; cKO: -20 vs 60 , $p > 0.9999$). -int, -interaction. **B**, Reelin knockdown completely blocked DHPG-induced LTD. Quantification of average fEPSP in the last 5 min is shown. Unpaired Student's *t* test was performed on the average of Control slices or Reelin cKO-treated slices 50 min after DHPG treatment (Control $n = 11$, Reelin cKO $n = 13$, $p = 0.0055$). **C**, Input-output analysis shows increased excitability in the Reelin cKO mice in the presence of AP-5 + picrotoxin (filled square). **D**, Hippocampal protein analysis indicates an increase in STEP₆₁ levels in Reelin cKO mice. Top, Confirmation of Reelin conditional knockout efficiency after the injections. (Control, $n = 7$, $a = 7$; Reelin cKO, $n = 5$, $a = 5$; unpaired *t* test, $p = 0.0002$). STEP₆₁ levels were measured by immunoblotting of hippocampal lysates from 6-month-old Reelin cKO and tamoxifen-injected Control mice (Control, $n = 13$, $a = 13$; Reelin cKO, $n = 10$, $a = 10$; unpaired *t* test, $p = 0.0280$). Error bars represent the SEM. (* $p < 0.05$, ** $p < 0.01$).

aCSF. Both Control and Reelin cKO slices were incubated in wells containing AP-5- and picrotoxin-containing aCSF for 1 h. Slices were collected for biochemical analysis (see below, Surface biotinylation and Western blotting).

Surface biotinylation. Biotinylation experiments were performed as described previously (Nosyreva and Huber, 2005). Slices were biotinylated on ice for 30 min using PBS buffer containing a nonpermeable biotin solution, 1.0 mg/ml sulfo-NHS-SS-biotin (Pierce). Slices were homogenized by forcing the suspension 15–20 times through a 23-gauge needle in 300 μl of ice-cold lysis buffer containing the following (in mM): 65 Tris-HCl pH 7.4, 150 NaCl, 1 EDTA, 0.5% deoxycholic acid, 1% Triton X-100, 0.1% SDS). Homogenate was spun down at 14,000 rpm for 15 min at 4°C . Protein concentration of the supernatant was determined using the Bio-Rad DC protein assay. Surface proteins were pulled down using neutravidin beads (Thermo Scientific). Beads were boiled for 20 min in $5\times$ SDS sample buffer (250 mM Tris-HCl, pH 6.8), 500 mM DTT, 10% SDS, 0.5% bromophenol blue, 50% glycerol) at 90°C . For total protein, SDS sample buffer ($1\times$ final) was added to 10 μg of hippocampal lysate and incubated for 10 min at 90°C . The surface and total protein samples were separated on a 8% SDS-PAGE gel and transferred to a nitrocellulose membrane.

Western blotting. Six-month-old Reelin cKO mice were perfused, and brains were quickly isolated and flash frozen. Hippocampi were

dissected in PBS with protease inhibitors and then lysed with lysis buffer containing the following (in mM): 0.1 ammonium molybdate, 2 EDTA, 2 sodium pervanadate, 50 sodium fluoride, 10 sodium pyrophosphate, 320 sucrose; $5\times$ sample buffer was added to hippocampal lysate. Samples were boiled at 80°C for 10 min and then loaded on a Tris/Glycine gradient gel and transferred onto a PVDF membrane.

The surface and total protein samples were separated on an 8% SDS-PAGE gel and transferred to a nitrocellulose membrane. Surface and total levels of GluA subunits were determined with antibodies directed against GluA2/3 (catalog #07-598, Millipore), GluA1 (catalog #ab1504, Abcam), or GluA4 (catalog #3824S, Cell Signaling Technology). STEP₆₁ of total fractions was visualized with an antibody directed against STEP (Cell Signaling Technology, 23e5) and GAPDH with anti GAPDH antibody (catalog #ab9485, Abcam). Protein levels were calculated by using the LI-COR Biosciences system. The ratio of surface to total protein levels was calculated after normalizing to GAPDH. Reelin knockdown was confirmed by probing with anti-Reelin antibody (G10; de Bergeyck et al., 1998).

Primary cortical neuronal cultures. Primary cortical neuronal cultures were prepared from rat (SD, Charles River Laboratories) at E18 as described previously (Chen et al., 2005). Neurons were cultured in Poly-D-Lysine-coated six-well plates (1 million/9 cm^2) in the presence of neurobasal medium supplemented with B27, glutamine, and penicillin-streptomycin and incubated at 37°C with 5% CO_2 . Primary neurons were used at DIV 13–15 for experiments. Media was changed to aCSF 2 h before DHPG ($100 \mu\text{M}$) was applied with or without Reelin (5 nM) for 1 h in the presence of AP-5 ($50 \mu\text{M}$) and picrotoxin ($10 \mu\text{M}$).

Drugs. (RS)-3,5-DHPG, D -AP5, and spermine tetrahydrochloride were purchased from R&D Systems. NASPM and picrotoxin were purchased from Sigma-Aldrich.

Statistical analysis. Data were expressed as the mean \pm SEM and evaluated using two-tailed Student's *t* test for two groups with one variable tested and equal variances or one-way ANOVA with Dunnett's *post hoc* or Tukey's *post hoc* for multiple groups with only variable tested. The differences were considered significant at $p < 0.05$ (* $p < 0.05$, ** $p < 0.01$, *** $p < 0.001$). Software used for data analysis was ImageJ (National Institutes of Health), LabVIEW 7.0 (National Instruments), Odyssey Imaging Systems (LI-COR Biosciences), Prism 7.0 (GraphPad Software).

Results

Reelin blocks DHPG-Induced LTD in hippocampal slices from wild-type mice

Synaptic plasticity is mediated by both LTD and LTP. Previously, we found that Reelin enhances LTP in the adult brain through enhancing NMDAR currents (Weeber et al., 2002; Durakoglugil et al., 2009). Along this line, Reelin treatment for 1 h increases surface expression of GluA1 and GluA2 in the hippocampal CA1 in a PI3K-dependent manner (Qiu et al., 2006a). In this study, we investigated whether Reelin treatment influences mGluR5 agonist DHPG-induced LTD. Extracellular field

potentials were recorded from the stratum radiatum. During the entire experiment, hippocampal slices from WT mice were maintained in oxygenated aCSF containing picrotoxin (GABA receptor antagonist, 10 μ M) and D-AP5 (NMDAR antagonist, 50 μ M). Slices were pretreated with Reelin for 30 min followed by a 10 min treatment with DHPG. After the washout of DHPG, slices were incubated with or without Reelin for an additional 50 min. In 3-month-old mice, Reelin (5 nM) application reduced the long-term LTD response after DHPG (100 μ M) treatment (Control $58.16 \pm 4.61\%$, $n = 14$ slices, animals (a) = 8 mice vs Reelin-treated slices $84.62 \pm 6.86\%$, $n = 11$ slices, $a = 6$ mice) of baseline (n indicates the slice numbers and a denotes animal numbers; Fig. 1A,B), suggesting that Reelin regulates mGluR-LTD.

Exogenous Reelin reduces STEP₆₁ levels and increases GluA2 phosphorylation

Dephosphorylation of the AMPAR subunit GluA2 by tyrosine phosphatases results in AMPAR endocytosis and is essential for DHPG-induced LTD (Moult et al., 2002). DHPG increases the abundance of STEP₆₁, a brain-specific phosphatase of GluA2 (Zhang et al., 2008). Thus, to understand how Reelin reduces mGluR-LTD, we examined STEP₆₁ levels on Reelin treatment. STEP₆₁ protein levels were analyzed in wild-type hippocampal slices after AP-5, picrotoxin, Reelin, and/or DHPG treatment. Mouse hippocampal slices were treated in six-well plates with AP-5, picrotoxin, Reelin, and/or DHPG as described extensively (see above, Materials and Methods). STEP₆₁ levels compared with control levels 50 min after DHPG washout were not significantly different (Fig. 1C; Control $102.7 \pm 3.53\%$ vs post-DHPG: $94.59 \pm 12.05\%$, $n = 7$ experiments, $a = 7$, n.s.). By contrast, in slices pretreated with AP-5, picrotoxin, and Reelin, basal STEP₆₁ levels were significantly decreased (Reelin: $65.32 \pm 5.72\%$, $n = 7$ experiments, $a = 7$ animals, $p = 0.0096$). Moreover, we saw a decrease in STEP₆₁ in samples cotreated with AP-5, picrotoxin, Reelin, and DHPG (post-DHPG with Reelin: $73.20 \pm 5.51\%$, $n = 7$, $a = 7$, $p = 0.0482$; Fig. 1C, 3-month-old mice). These data support the conclusion that Reelin blocks DHPG-induced LTD through STEP₆₁.

Activated STEP₆₁ dephosphorylates GluA2. Given the observed Reelin-mediated block of DHPG-induced LTD and decreased STEP₆₁ levels (Fig. 1A–C), we quantified tyrosine phosphorylation (Y869/873/876) of GluA2 after applying DHPG to primary rat cortical neurons (DIV 14) in the absence and presence of AP-5, picrotoxin, and Reelin (Fig. 1D). Coapplication of AP-5, picrotoxin, Reelin, and DHPG increased GluA2 phosphorylation (DHPG $100 \pm 7.49\%$ vs DHPG + Reelin $124.34 \pm 7.16\%$, $n = 4$ different cultures from four separate rats). Whether Reelin directly increases phosphorylation of GluA2 or indirectly through STEP₆₁ still needs to be determined. We propose a model where Reelin blocks mGluR-dependent LTD through increasing the phosphorylation of GluA2 along with a reduction in STEP₆₁ levels (Fig. 1E).

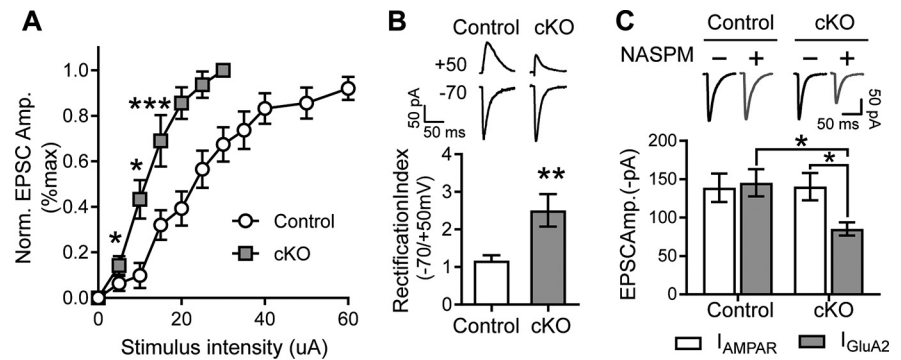


Figure 3. Evoked AMPA single-cell whole-cell currents in the Reelin cKO mice shows the presence of GluA2 lacking AMPA receptors. **A**, Reelin cKO input-output curve is shifted to the left. Plot of the average AMPAR current output at increasing stimulation intensities depicting enhanced AMPAR currents in Reelin cKO neurons compared with control neurons, indicating Reelin cKO neurons have increased excitability (Control, $n = 18$ cells, $a = 5$; cKO, $n = 10$ cells, $a = 3$; two-way ANOVA: Genotype-int: $F_{(1,108)} = 12.42$, $p = 0.0006$; Sidak's *post hoc*: Control vs cKO: 5–15 uA, $*p = 0.0412$, $***p = 0.0002$, 2- to 3-month-old mice). **B**, Reelin cKO mice have a higher RI. Reelin cKO mice show higher RI compared with their age-matched controls, which is a strong indication for the presence of GluA2-lacking AMPARs. RI is calculated as the ratio of peaks at $-70/+50$ mV (Control, $n = 15$ cells, $a = 11$; cKO, $n = 8$ cells, $a = 5$; two-tailed unpaired t test: $t_{(21)} = 3.639$, $**p = 0.0015$, 2- to 3-month-old mice). **C**, AMPAR currents are more sensitive to PhTx, specific blockers of GluA2-lacking AMPARs in Reelin cKO mice. Representative EPSC traces (top) and summary plot of the average AMPAR-mediated currents before (I_{AMPA}) and after PhTx (NASPM) application (I_{GluA2}) (bottom). Pharmacologically isolated evoked AMPAR currents from Reelin cKO mice show higher sensitivity to NASPM (Control, $n = 6$ cells, $a = 4$; cKO, $n = 7$ cells, $a = 5$, two-way RM ANOVA: NASPM-int: $F_{(1,11)} = 4.207$, $p = 0.0649$; Sidak's *post hoc*: $I_{\text{AMPA}}-I_{\text{GluA2}}$: Control, $p = 0.9192$; cKO, $*p = 0.0114$, Genotype-int: $F_{(1,11)} = 2.349$, $p = 0.1536$; Sidak's *post hoc*: Control vs cKO: I_{AMPA} , $p = 0.9973$; I_{GluA2} , $*p = 0.027$, 2- to 3-month-old mice). Error bars represent the SEM. ($*p < 0.05$, $**p < 0.01$, $***p < 0.001$).

mGluR-LTD is occluded in mice lacking Reelin

As exogenous Reelin treatment blocks LTD (Fig. 1A,B), we next investigated whether depletion of endogenous Reelin has an impact on the same system. Therefore, we induced mGluR-LTD with DHPG (100 μ M) in the presence of NMDAR antagonist (AP-5) and GABA receptor antagonist (picrotoxin) in hippocampal slices from 3-month-old conditional Reelin knock-out mice (Reelin cKO), where Reelin was depleted at 4 weeks of age, thereby testing the *in vivo* function of endogenous Reelin in adult mice after the end of the neuronal migration period for which Reelin is required (Herz and Chen, 2006). Intriguingly, we found that in Reelin-deficient slices, DHPG-induced mGluR-LTD was reduced (Control $59.0 \pm 6.8\%$, $n = 11$ slices, $a = 3$ animals; Reelin cKO $97.8 \pm 10.0\%$, $n = 13$, $a = 3$; Fig. 2A,B). In addition, the input/output curve in the presence of D-AP5 (50 μ M) and picrotoxin (10 μ M) showed a leftward shift consistent with an increased excitability in the Reelin cKO slices from CA1 (Fig. 2C). Considering the spectrum of neuromodulatory roles of Reelin (Wasser and Herz, 2016; Lane-Donovan and Herz, 2017), our findings suggest that Reelin is regulating pathways that are critical for mGluR-mediated LTD.

Reelin cKO mice have elevated STEP₆₁ levels

LTD induction depends on both the phosphorylation and surface expression of GluA2, which is regulated by STEP₆₁ levels (Won et al., 2019). We postulated that initial loss of Reelin by tamoxifen-driven Cre-recombination would remove the brake on the LTD suppression, resulting in elevated LTD and increased levels of STEP₆₁. To test this hypothesis, we measured hippocampal STEP₆₁ levels in 6-month-old Reelin cKO mice. Ablation of Reelin significantly increased STEP₆₁ levels (Control $100.0 \pm 5.1\%$ vs Reelin cKO $174.5 \pm 35.6\%$; Control $n = 13$, $a = 13$; Reelin cKO $n = 10$, $a = 10$, unpaired t test, $p = 0.0280$; Fig. 2D). These data, along with the phosphorylation of GluA2 containing

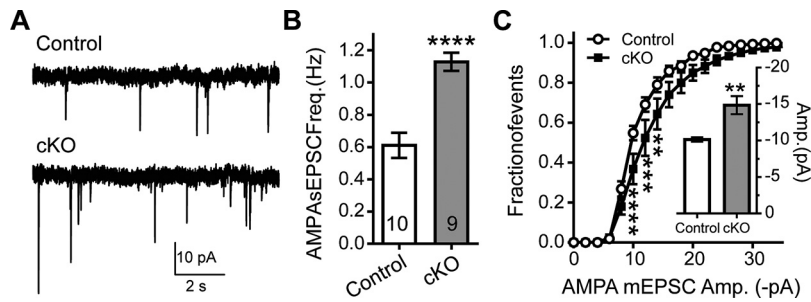


Figure 4. Spontaneous AMPA minis have higher amplitude and frequencies in the Reelin mice. **A–C**, AMPA currents were pharmacologically isolated with AP-5 (50 μM) and picrotoxin (10 μM). Reelin cKO neurons display increased frequency (Control $n = 10$ cells, $a = 7$ and Reelin cKO $n = 9$ cells, $a = 5$, unpaired t test, $p < 0.001$) and amplitude (unpaired t test, $p < 0.001$) of spontaneous AMPAR currents compared with WT slices. **A**, Representative traces. **B**, Summary plots of frequency analysis (unpaired t test, $p < 0.001$). **C**, Cumulative probability analysis of the amplitudes of AMPAR currents in Reelin cKO and Control CA1 hippocampal neurons shows significance at 10, 12, and 14 pA (two-way RM ANOVA: amplitude \times genotype-int $F_{(25,425)} = 3.023$, $p < 0.0001$, amplitude $F_{(25,425)} = 538.4$, $p < 0.0001$, 2- to 3-month-old mice). Error bars represent the SEM. (** $p < 0.01$, *** $p < 0.001$, **** $p < 0.0001$).

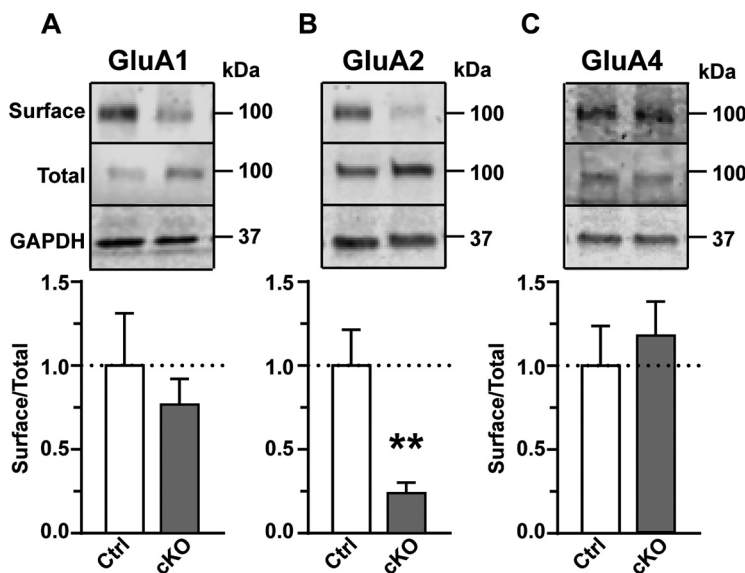


Figure 5. Surface GluA2 expression is significantly reduced in Reelin cKO mice after NMDA receptor block. **A–C**, Slices were treated with AP-5 (50 μM) and picrotoxin (10 μM). Surface to total (S/T) AMPAR subunits (GluA1, GluA2, GluA4) are quantified between Control (Ctrl; $n = 6$, $a = 6$) and Reelin cKO ($n = 6$, $a = 6$) mice at 6 months of age. Top, Representative Western blots of surface and total GluA subunits, GAPDH was used as loading controls. **A**, For S/T GluA1 no significant difference was observed between Reelin cKO and Control. ($p = 0.52$, $n = 6$, unpaired t test). **B**, The S/T GluA2 level is decreased in Reelin cKO when compared with Control ($p = 0.007$, $n = 6$, unpaired t test). **C**, No significant changes in surface GluA4 were observed in Reelin cKO mice ($p = 0.23$, $n = 6$, unpaired t test). Error bars represent the SEM. (** $p < 0.01$).

AMPA receptors (Fig. 1D), further support a role for Reelin in the regulation of STEP₆₁.

Postdevelopmental loss of Reelin increases rectification index in CA1 neurons

During development, lack of Reelin disrupts normal neuronal migration leading to perturbations in lamination of the hippocampus and neocortex. In the adult mice, Reelin can modulate NMDARs and synaptic plasticity (Lane-Donovan et al., 2014, 2015), yet it is not clear how Reelin can regulate glutamatergic receptor surface expression under stress conditions. Because depletion of Reelin after 6 months of age increases STEP₆₁ levels, we suspect that downstream targets of STEP₆₁ are altered as well. As STEP₆₁ regulates surface expression of GluA2-containing AMPARs, we first evaluated the functional properties of evoked

AMPA currents using whole-cell recordings in the Reelin cKO mice. We found a significantly greater magnitude of average AMPAR current in CA1 neurons from Reelin cKO mice compared with those from control mice at all stimulus intensities, as seen with a leftward shift of the input-output (IO) curve in the Reelin cKO mice compared with the Controls (Fig. 3A; Control, $n = 18$ cells, $a = 5$; Reelin cKO, $n = 10$ cells, $a = 3$). This leftward shift in the IO curve indicates an increase in conductance of AMPARs. Lack of the GluA2 subunit increases the conductance of AMPARs and the ability of polyamines (spermine) to block the receptor at positive holding potentials (Swanson et al., 1997). Thus, we can use the ratio of the AMPAR peak current evoked at -70mV over those evoked at $+50\text{mV}$ to calculate the rectification index (RI). An increase in RI would indicate the amount of inwardly rectifying receptors or, as in our case, GluA2-lacking AMPARs. Therefore, we measured the RI in 2- to 3-month-old Reelin cKO mice. Indeed, loss of Reelin increased the RI, suggesting the presence of inwardly rectifying GluA2-lacking AMPARs (Control 1.168 ± 0.14 , $n = 15$ cells, $a = 11$ vs Reelin cKO 2.507 ± 0.4 , $n = 8$ cells, $a = 5$; Fig. 3B). Reelin deficiency increases excitability and RI, which is consistent with a relative lack of GluA2 on the surface.

Evoked AMPAR currents from Reelin cKO mice have a higher proportion of GluA2-lacking receptors

PhTXs are polyamines that specifically block GluA2-lacking AMPARs. To determine the relative amount of GluA2-lacking AMPARs in the cKO mice, we compared the PhTX sensitivity of AMPAR components of stimulus-evoked excitatory postsynaptic currents (EPSCs) in the CA1 region of 2- to 3-month-old Reelin cKO to the Control mice. The exogenous PhTX (NASPM) induced a robust reduction in AMPAR currents in Reelin cKO (from $140.49 \pm 85.20 \pm 8.66\text{pA}$; $n = 7$ cells, $a = 5$), whereas it had no effect on control hippocampi (from 138.99 ± 18.55 to $145.51 \pm 17.70\text{pA}$; $n = 6$ cells, $a = 4$; Fig. 3C), confirming that Reelin cKO mice have an increase in GluA2-lacking AMPARs.

Spontaneous AMPAR minis have higher amplitude and frequencies in Reelin cKO mice

To further validate if the increased excitability in Reelin cKO mice is mediated by an increase in GluA2-lacking AMPARs, we analyzed spontaneous AMPAR minis, which represent the AMPAR current responses to glutamate release at individual synapses. Reelin cKO neurons display increased amplitude (Control $10.15 \pm 0.30\text{pA}$, $n = 10$ cells, $a = 7$ vs Reelin cKO $14.84 \pm 1.23\text{pA}$; $n = 9$ cells, $a = 5$) and frequency (Control $0.61 \pm 0.08\text{Hz}$ vs Reelin cKO $1.128 \pm 0.06\text{Hz}$) of spontaneous AMPAR

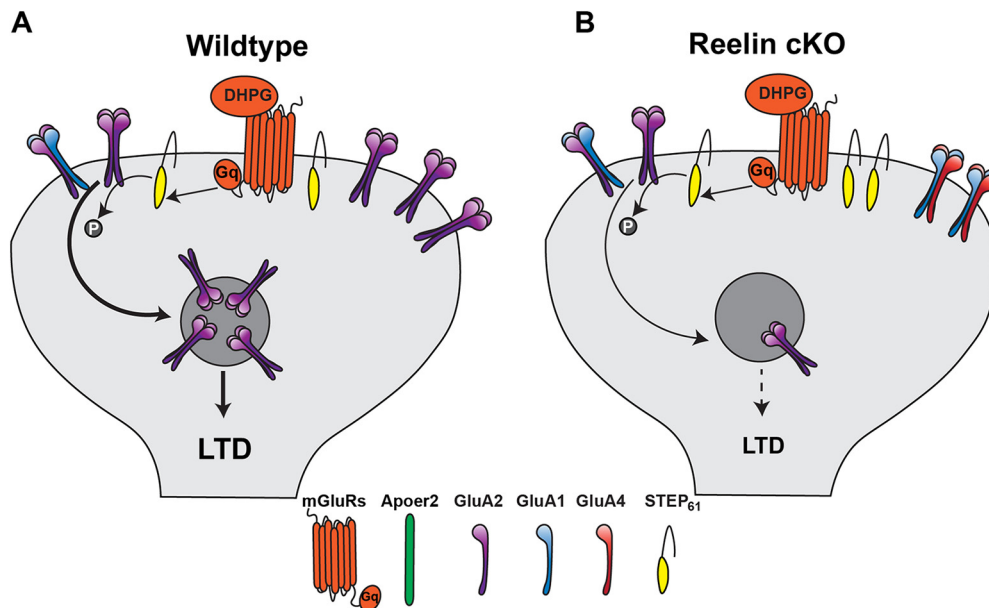


Figure 6. Model for Reelin and STEP₆₁ interaction. **A**, DHPG-induced LTD in wild type. In wild type, synaptic GluA2-containing AMPARs are abundant. DHPG induces mGluR LTD through upregulating STEP₆₁ activity. STEP₆₁ dephosphorylates GluA2 to induce its endocytosis rendering the synapse less receptive for glutamate and causing LTD. **B**, Reelin depletion occludes DHPG-induced LTD. When Reelin is knocked out, STEP₆₁ levels are elevated. This leads to a chronic dephosphorylation and depletion of GluA2-containing AMPARs from the synaptic surface. In this situation DHPG application can only affect the removal of a small amount of GluA2-containing AMPARs.

currents compared with control neurons (Fig. 4A–C). However, both were reduced in Reelin-cKO compared with Control and Reelin-cKO neurons not treated with the inhibitor. The reduced amplitude after NASPM is consistent with an increased number of GluA2-lacking receptors at Reelin-cKO synapses.

Surface GluA2 expression is significantly reduced in Reelin cKO mice

The electrophysiology data suggests an increase in GluA2-lacking AMPARs; thus, we next performed surface biotinylation experiments to determine the AMPAR subunits residing on the surface of Reelin cKO neurons. The slices were treated with D-AP5 (50 μ M) and picrotoxin (10 μ M) to mimic the conditions of the electrophysiological recording experiments. Our results show a significant reduction in surface GluA2 levels (Control $100.0 \pm 21.4\%$, $n = 6$, $a = 6$; Reelin cKO $23.9 \pm 6.4\%$, $n = 6$, $a = 6$), along with a trend to a reduction in surface GluA1 (Control $100.0 \pm 31.2\%$; Reelin cKO $76.7 \pm 15.3\%$) and no significant change in surface GluA4 (Control $100.0 \pm 23.9\%$; Reelin cKO 118.00 ± 20.5), providing further evidence that Reelin depletion in adult mice results in an increase in calcium-permeable GluA2-lacking AMPARs (Fig. 5A–C).

Discussion

We have shown that Reelin inhibits mGluR-LTD, a type of synaptic plasticity that is exacerbated by A β in AD mouse models. Specifically, we show that exogenous Reelin reduces STEP₆₁ levels. Thus, in the presence of DHPG, Reelin suppresses the dephosphorylation of GluA2 receptors leading to the inhibition of mGluR-LTD (Fig. 6A). Conversely, Reelin depletion in the adult mouse brain leads to an increase of STEP₆₁, while causing a reduction in surface expression of GluA2-receptors after NMDAR blockade. Although this finding seems counterintuitive at first, our data suggest that in the Reelin cKO mice, STEP levels are already saturated and GluA2-containing AMPARs are

already internalized. Therefore, application of DHPG does not cause further internalization and thus no longer induces LTD (Fig. 6B), an effect known as occlusion, which also occurs in amyloid precursor protein and presenilin-1 mice, which can be rescued by repression of the eIF2 α kinase PERK (Yang et al., 2016). Importantly there is evidence that ApoE4 treatment in neurons increases excitotoxicity (Buttini et al., 2010). Indeed, our preliminary unpublished data suggest that slices from ApoE4 mice show increased expression of CPARs in an age-dependent manner. This would be consistent with Reelin resistance developing during aging in ApoE4 mice in parallel with ApoE4 mediated risk for AD.

We propose two mechanisms for how Reelin regulates mGluR-LTD: (1) either through directly enhancing GluA2 surface expression and phosphorylation and/or (2) by regulating translation of proteins required for LTD. The first is supported by a study indicating that Reelin enhances the surface expression of AMPARs-containing GluA1 and/or GluA2 (Qiu et al., 2006b). Reelin binding to Apoer2 activates Src family kinases (SFK), which phosphorylate Disabled 1 (Dab1), the first step of Reelin pathway activation. SFKs also phosphorylate GluA2 at residue Y876 (Kohda et al., 2013). Thus, Reelin might have a direct effect on GluA2 phosphorylation through SFKs. Supporting the second mechanism, our current data show that Reelin regulates the protein level of STEP₆₁, an important LTD protein. STEP₆₁ dephosphorylates tyrosines on GluA2 to induce its endocytosis (Won et al., 2019). Reelin reduces STEP₆₁ levels and therefore prevents GluA2 dephosphorylation and endocytosis.

We have shown that exogenous Reelin treatment increases tyrosine (Y869/Y873/876) phosphorylation of GluA2 (Fig. 1D), and others showed that Reelin increases GluA2 surface expression (Qiu et al., 2006a; Qiu and Weeber, 2007). The role of Reelin in increasing surface GluA2 and phospho-GluA2 is further supported by decreased surface GluA2 levels we found in Reelin cKO brain slices. It is likely that Reelin controls surface

GluA2 through both mechanisms mentioned above. Future studies need to delineate how Reelin regulates STEP₆₁ levels. It is possible that Reelin modulates STEP₆₁ levels through translational regulation of LTD genes. This model is supported by the finding that Reelin regulates the mTOR and ribosomal protein S6 Kinase (S6K) pathway (Bock et al., 2003; Jossin et al., 2003). S6K regulates translation of LTD proteins like FMRP and STEP₆₁. Additionally, our complementary study in Reelin cKO mice shows that STEP₆₁ levels are elevated along with a reduction in surface GluA2 receptors (Fig. 5). Consequently, Reelin cKO neurons are unable to respond to DHPG, and LTD is occluded.

The subunit composition of synaptic AMPARs can undergo dynamic changes during physiological as well as pathologic conditions (Weiss, 2011). Physiologically, GluA2-lacking AMPARs are transiently incorporated into the synapse during LTP, which is followed by insertion of GluA2-containing AMPARs that are required for LTP consolidation (Terashima et al., 2008). Pathologically, however, the absence or insufficient expression of GluA2 subunits renders neurons more susceptible to excitotoxicity and neuronal cell death (Liu and Zukin, 2007). Since their discovery, Ca²⁺-permeable AMPARs (CPARs) have been implicated in the pathogenesis of various neurologic conditions, including epilepsy (Egbenya et al., 2018), amyotrophic lateral sclerosis, ischemic insult (Weiss, 2011), and AD (Gaisler-Salomon et al., 2014). Our data support the findings that in the adult mouse brain, Reelin regulates AMPAR subunit composition during neurophysiological and neurodegenerative conditions. In an autosomal dominant form of temporal lobe epilepsy (TLE) patients have increased GluA2-lacking AMPARs (Egbenya et al., 2018). Interestingly, TLE causes neuronal positioning defects in the dentate gyrus of patients because of deficient Reelin expression (Haas et al., 2002; Haas and Frotscher, 2010; Tinnes et al., 2011). Thus, the link between Reelin deficiency and GluA2-lacking AMPARs might be relevant for TLE as well.

GluA2 mRNA is a substrate of adenosine deaminase acting on RNA (ADAR2) and is normally edited by this enzyme to cause a Q to R change at amino acid 607. AMPARs containing the unedited GluA2(Q) subunit are Ca²⁺ permeable, whereas the presence of edited GluA2(R) render the receptor Ca²⁺ impermeable (Swanson et al., 1997). AMPAR-containing GluA2(Q) and GluA2-lacking AMPAR are collectively known as CPARs, and play an important role in synaptic and homeostatic plasticity and in the pathophysiology of various neurologic disorders (Henley and Wilkinson, 2016). Recently, it was found that Reelin-expressing stellate cells of the medial entorhinal cortex are subject to age-dependent GABA receptor subunit $\alpha 3$ editing (Berggaard et al., 2019). Whether Reelin can regulate GluA2 editing remains to be determined.

The N terminus of GluA2 is indispensable for hippocampal mGluR-LTD (Zhou et al., 2011) and depletion of GluA2 ablates mGluR-LTD in adult mice (3 months), but not in younger mice (<1 month), suggesting that GluA2 is involved in mGluR-LTD in an age-dependent manner (Cao et al., 2017, 2018). GluA2-dependent mGluR-LTD in mature mice is mediated through Rho GTPase Rac1 and its downstream actin-regulator cofilin (Zhou et al., 2011). Cofilin phosphorylation is selectively reduced in the mature mouse brain. Conversely, Reelin reduces cofilin activity via phosphorylation through LIMK1 (LIM Domain Kinase 1), a downstream effector of Rac1 (Chai et al., 2009), suggesting that the Reelin/cofilin axis provides another potential LTD-regulating pathway. Thus, it is possible that Reelin is a key regulator in the transition from the juvenile to the mature brain. Future studies are required to dissect these interactions to understand their contributions to overall

plasticity and neurodegeneration. Whereas Reelin seems to regulate synaptic plasticity in mature brains dependent on GluA2, other plasticity regulators such as PICK1 (protein interacting with C-Kinase 1) are effective in the juvenile brain independent of GluA2 (Cao et al., 2018)

LTD is induced through activation of Group1 mGluRs (mGluR1 and mGluR5), which induces a cell signaling cascade mediated by the PI3 kinase (PI3K)/Akt and mTOR pathways. This cascade controls the phosphorylation of proteins, for example Fragile X mental retardation protein (FMRP) a critical regulator for the translation of LTD proteins. Phosphorylated FMRP controls protein synthesis by stalling ribosomes on target LTD mRNAs and suppresses the translation of proteins such as STEP₆₁, Arc, and MAP1b (Richter and Klann, 2009; Waung and Huber, 2009; Gonatopoulos-Pournatzis et al., 2020). Importantly, and comparable to AD mouse models, FMRP-KO mice have higher STEP₆₁ levels (Chatterjee et al., 2018). In this current study, we have shown that Reelin controls STEP₆₁ levels, suggesting a role in protein synthesis.

Dysregulation of the mTOR pathway occurs in numerous neurodegenerative and neurodevelopmental diseases including AD and autism (Hoeffler and Klann, 2010; Sharma et al., 2010). Reelin and mTOR signaling pathways share pivotal hub molecules, such as PI3K and Akt. Whereas Reelin acts upstream of PI3K/Akt (Bock et al., 2003), mTOR acts downstream (Khlebodarova et al., 2018). Heterozygous Reelin-KO mice, a genetic model for schizophrenia, have reduced spine density and abnormal fear memory, which is alleviated by a single *in vivo* injection of ketamine or a GluN2B antagonist. The rescue effect by ketamine can be prevented by rapamycin, an inhibitor of the mTOR pathway (Iafrazi et al., 2014), further bolstering the role of mTOR in Reelin-related psychiatric and neurodegenerative disorders.

Brain-derived neurotrophic factor (BDNF) is an upstream activator of mTOR during memory formation (Slipczuk et al., 2009). There is evidence for cross-talk between Reelin and BDNF (Ringstedt et al., 1998): BDNF, by binding to its receptors on the Cajal-Retzius cells of the cerebral cortex, downregulates Reelin expression during early postnatal development. In dendrites of cultured neurons, BDNF activates signaling of both 4E-BP and S6K, translational regulators downstream of mTOR (Takei et al., 2001). BDNF promotes proteolysis of PTEN (phosphatase and tensin homolog deleted on chromosome 10), which is a phosphatase that inhibits Akt activity and signaling to mTORC1 and degradation of tuberous sclerosis complex proteins TSC1 and TSC2, both of which are negative regulators of mTORC1 (Ebert and Greenberg, 2013). Along this line, in heterozygous Reeler mice, decreased levels of PTEN were found in the postsynaptic density fractions (Ventrucci et al., 2011).

Local protein synthesis and actin remodeling in neurons involves activation of TrkB receptors by the neurotrophin BDNF and Group1 mGluRs by DHPG. As previously described, DHPG increases local translation and tyrosine phosphatase activity of STEP₆₁ to dephosphorylate and induce endocytosis of the GluA2-containing AMPARs. Intriguingly, BDNF increases STEP₆₁ degradation through PLC γ -dependent proteasomal activation, which requires tyrosine kinase activity (Saavedra et al., 2016). Activation of mGluRs enhances dendritic protein synthesis through mTOR- and ERK-dependent mechanisms. In summary, our data show that Reelin can reduce STEP₆₁ translation induced by DHPG application, suggesting a regulatory function at the level of protein synthesis.

References

- Berggaard N, Witter MP, van der Want JJJ (2019) GABA_A receptor subunit $\alpha 3$ in network dynamics in the medial entorhinal cortex. *Front Syst Neurosci* 13:10.
- Bock HH, Jossin Y, Liu P, Förster E, May P, Goffinet AM, Herz J (2003) Phosphatidylinositol 3-kinase interacts with the adaptor protein Dab1 in response to Reelin signaling and is required for normal cortical lamination. *J Biol Chem* 278:38772–38779.
- Buttini M, Masliah E, Yu GQ, Palop JJ, Chang S, Bernardo A, Lin C, Wyss-Coray T, Huang Y, Mucke L (2010) Cellular source of apolipoprotein E4 determines neuronal susceptibility to excitotoxic injury in transgenic mice. *Am J Pathol* 177:563–569.
- Cao F, Zhou Z, Pan X, Leung C, Xie W, Collingridge G, Jia Z (2017) Developmental regulation of hippocampal long-term depression by cofilin-mediated actin reorganization. *Neuropharmacology* 112:66–75.
- Cao F, Zhou Z, Cai S, Xie W, Jia Z (2018) Hippocampal long-term depression in the presence of calcium-permeable AMPA receptors. *Front Synaptic Neurosci* 10:41.
- Chai X, Förster E, Zhao S, Bock HH, Frotscher M (2009) Reelin stabilizes the actin cytoskeleton of neuronal processes by inducing n-cofilin phosphorylation at serine3. *J Neurosci* 29:288–299.
- Chatterjee M, Kurup PK, Lundbye CJ, Hugger Toft AK, Kwon J, Benedict J, Kamceva M, Banke TG, Lombroso PJ (2018) STEP inhibition reverses behavioral, electrophysiologic, and synaptic abnormalities in Fmr1 KO mice. *Neuropharmacology* 128:43–53.
- Chen X, Lin R, Chang L, Xu S, Wei X, Zhang J, Wang C, Anwyl R, Wang Q (2013) Enhancement of long-term depression by soluble amyloid β protein in rat hippocampus is mediated by metabotropic glutamate receptor and involves activation of p38MAPK, STEP and caspase-3. *Neuroscience* 253:435–443.
- Chen Y, Beffert U, Ertunc M, Tang TS, Kavalali ET, Bezprozvanny I, Herz J (2005) Reelin modulates NMDA receptor activity in cortical neurons. *J Neurosci* 25:8209–8216.
- Chen Y, Durakoglugil MS, Xian X, Herz J (2010) ApoE4 reduces glutamate receptor function and synaptic plasticity by selectively impairing ApoE receptor recycling. *Proc Natl Acad Sci U S A* 107:12011–12016.
- de Bergeyck V, Naerhuyzen B, Goffinet AM, Lambert de Rouvroit C (1998) A panel of monoclonal antibodies against reelin, the extracellular matrix protein defective in reeler mutant mice. *J Neurosci Methods* 82:17–24.
- Durakoglugil MS, Chen Y, White CL, Kavalali ET, Herz J (2009) Reelin signaling antagonizes beta-amyloid at the synapse. *Proc Natl Acad Sci U S A* 106:15938–15943.
- Ebert DH, Greenberg ME (2013) Activity-dependent neuronal signalling and autism spectrum disorder. *Nature* 493:327–337.
- Egbenya DL, Hussain S, Lai YC, Xia J, Anderson AE, Davanger S (2018) Changes in synaptic AMPA receptor concentration and composition in chronic temporal lobe epilepsy. *Mol Cell Neurosci* 92:93–103.
- Gaisler-Salomon I, Kravitz E, Feiler Y, Safran M, Biegon A, Amariglio N, Rechavi G (2014) Hippocampus-specific deficiency in RNA editing of GluA2 in Alzheimer's disease. *Neurobiol Aging* 35:1785–1791.
- Gonatopoulos-Pournatzis T, Nibori R, Salter EW, Weatheritt RJ, Tsang B, Farhangmehr S, Liang X, Braunschweig U, Roth J, Zhang S, Henderson T, Sharma E, Quesnel-Vallières M, Permanyer J, Maier S, Georgiou J, Irimia M, Sonenberg N, Forman-Kay JD, Gingras A-C, et al. (2020) Autism-misregulated eIF4G microexons control synaptic translation and higher order cognitive functions. *Mol Cell* 77:1176–1192.e16.
- Groc L, Choquet D, Stephenson FA, Verrier D, Manzoni OJ, Chavis P (2007) NMDA receptor surface trafficking and synaptic subunit composition are developmentally regulated by the extracellular matrix protein Reelin. *J Neurosci* 27:10165–10175.
- Haas CA, Frotscher M (2010) Reelin deficiency causes granule cell dispersion in epilepsy. *Exp Brain Res* 200:141–149.
- Haas CA, Dudeck O, Kirsch M, Huszka C, Kann G, Pollak S, Zentner J, Frotscher M (2002) Role for reelin in the development of granule cell dispersion in temporal lobe epilepsy. *J Neurosci* 22:5797–5802.
- Hayashi S, McMahon AP (2002) Efficient recombination in diverse tissues by a tamoxifen-inducible form of Cre: a tool for temporally regulated gene activation/inactivation in the mouse. *Dev Biol* 244:305–318.
- Henley JM, Wilkinson KA (2016) Synaptic AMPA receptor composition in development, plasticity and disease. *Nat Rev Neurosci* 17:337–350.
- Herz J, Chen Y (2006) Reelin, lipoprotein receptors and synaptic plasticity. *Nat Rev Neurosci* 7:850–859.
- Hoeffler CA, Klann E (2010) mTOR signaling: at the crossroads of plasticity, memory and disease. *Trends Neurosci* 33:67–75.
- Hsieh H, Boehm J, Sato C, Iwatsubo T, Tomita T, Sisodia S, Malinow R (2006) AMPAR removal underlies Abeta-induced synaptic depression and dendritic spine loss. *Neuron* 52:831–843.
- Iafrafi J, Orejarena MJ, Lassalle O, Bouamrane L, Gonzalez-Campo C, Chavis P (2014) Reelin, an extracellular matrix protein linked to early onset psychiatric diseases, drives postnatal development of the prefrontal cortex via GluN2B-NMDARs and the mTOR pathway. *Mol Psychiatry* 19:417–426.
- Jossin Y, Ogawa M, Metin C, Tissir F, Goffinet AM (2003) Inhibition of SRC family kinases and non-classical protein kinases C induce a reeler-like malformation of cortical plate development. *J Neurosci* 23:9953–9959.
- Khlebodarova TM, Kogai VV, Trifonova EA, Likhoshvai VA (2018) Dynamic landscape of the local translation at activated synapses. *Mol Psychiatry* 23:107–114.
- Kohda K, Kakegawa W, Matsuda S, Yamamoto T, Hirano H, Yuzaki M (2013) The $\delta 2$ glutamate receptor gates long-term depression by coordinating interactions between two AMPA receptor phosphorylation sites. *Proc Natl Acad Sci U S A* 110:E948–957.
- Kounnas MG, Lane-Donovan C, Nowakowski DW, Herz J, Comer WT (2017) NIZ 555, a γ -secretase modulator, lowers the amyloid biomarker, A β ₄₂, in cerebrospinal fluid while preventing Alzheimer's disease cognitive decline in rodents. *Alzheimers Dement (N Y)* 3:65–73.
- Kurup P, Zhang Y, Xu J, Venkitaramani DV, Haroutunian V, Greengard P, Nairn AC, Lombroso PJ (2010) Abeta-mediated NMDA receptor endocytosis in Alzheimer's disease involves ubiquitination of the tyrosine phosphatase STEP61. *J Neurosci* 30:5948–5957.
- Lane-Donovan C, Herz J (2017) ApoE, ApoE receptors, and the synapse in Alzheimer's Disease. *Trends Endocrinol Metab* 28:273–284.
- Lane-Donovan C, Phillips GT, Herz J (2014) More than cholesterol transporters: lipoprotein receptors in CNS function and neurodegeneration. *Neuron* 83:771–787.
- Lane-Donovan C, Phillips GT, Wasser CR, Durakoglugil MS, Masiulis I, Upadhya A, Pohlkamp T, Coskun C, Kotti T, Steller L, Hammer RE, Frotscher M, Bock HH, Herz J (2015) Reelin protects against amyloid β toxicity *in vivo*. *Sci Signal* 8:ra67.
- Liu SJ, Zukin RS (2007) Ca²⁺-permeable AMPA receptors in synaptic plasticity and neuronal death. *Trends Neurosci* 30:126–134.
- Moult PR, Schnabel R, Kilpatrick IC, Bashir ZI, Collingridge GL (2002) Tyrosine dephosphorylation underlies DHPG-induced LTD. *Neuropharmacology* 43:175–180.
- Nosyreva ED, Huber KM (2005) Developmental switch in synaptic mechanisms of hippocampal metabotropic glutamate receptor-dependent long-term depression. *J Neurosci* 25:2992–3001.
- Pelkey KA, Askalan R, Paul S, Kalia LV, Nguyen TH, Pitcher GM, Salter MW, Lombroso PJ (2002) Tyrosine phosphatase STEP is a tonic brake on induction of long-term potentiation. *Neuron* 34:127–138.
- Qiu S, Zhao LF, Korwek KM, Weeber EJ (2006a) Differential reelin-induced enhancement of NMDA and AMPA receptor activity in the adult hippocampus. *J Neurosci* 26:12943–12955.
- Qiu S, Korwek KM, Pratt-Davis AR, Peters M, Bergman MY, Weeber EJ (2006b) Cognitive disruption and altered hippocampus synaptic function in Reelin haploinsufficient mice. *Neurobiol Learn Mem* 85:228–242.
- Qiu S, Weeber EJ (2007) Reelin signaling facilitates maturation of CA1 glutamatergic synapses. *J Neurophysiol* 97:2312–2321.
- Rammes G, Hasenjaeger A, Sroka-Saidi K, Deussing JM, Parsons CG (2011) Therapeutic significance of NR2B-containing NMDA receptors and mGluR5 metabotropic glutamate receptors in mediating the synaptotoxic effects of beta-amyloid oligomers on long-term potentiation (LTP) in murine hippocampal slices. *Neuropharmacology* 60:982–990.
- Renner M, Lacor PN, Velasco PT, Xu J, Contractor A, Klein WL, Triller A (2010) Deleterious effects of amyloid beta oligomers acting as an extracellular scaffold for mGluR5. *Neuron* 66:739–754.
- Richter JD, Klann E (2009) Making synaptic plasticity and memory last: mechanisms of translational regulation. *Genes Dev* 23:1–11.
- Ringstedt T, Linnarsson S, Wagner J, Lendahl U, Kokaia Z, Arenas E, Ernfors P, Ibanez CF (1998) BDNF regulates reelin expression and Cajal-Retzius cell development in the cerebral cortex. *Neuron* 21:305–315.
- Saavedra A, Puigdelivol M, Tyebji S, Kurup P, Xu J, Ginés S, Alberch J, Lombroso PJ, Pérez-Navarro E (2016) BDNF induces striatal-enriched

- protein tyrosine phosphatase 61 degradation through the proteasome. *Mol Neurobiol* 53:4261–4273.
- Sharma A, Hoeffler CA, Takayasu Y, Miyawaki T, McBride SM, Klann E, Zukin RS (2010) Dysregulation of mTOR signaling in Fragile X syndrome. *J Neurosci* 30:694–702.
- Slipczuk L, Bekinshtein P, Katche C, Cammarota M, Izquierdo I, Medina JH (2009) BDNF activates mTOR to regulate GluR1 expression required for memory formation. *PLoS One* 4:e6007.
- Snyder EM, Nong Y, Almeida CG, Paul S, Moran T, Choi EY, Nairn AC, Salter MW, Lombroso PJ, Gouras GK, Greengard P (2005) Regulation of NMDA receptor trafficking by amyloid-beta. *Nat Neurosci* 8:1051–1058.
- Swanson GT, Kamboj SK, Cull-Candy SG (1997) Single-channel properties of recombinant AMPA receptors depend on RNA editing, splice variation, and subunit composition. *J Neurosci* 17:58–69.
- Takei N, Kawamura M, Hara K, Yonezawa K, Nawa H (2001) Brain-derived neurotrophic factor enhances neuronal translation by activating multiple initiation processes: comparison with the effects of insulin. *J Biol Chem* 276:42818–42825.
- Terashima A, Pelkey KA, Rah JC, Suh YH, Roche KW, Collingridge GL, McBain CJ, Isaac JT (2008) An essential role for PICK1 in NMDA receptor-dependent bidirectional synaptic plasticity. *Neuron* 57:872–882.
- Tinnes S, Schäfer MK, Flubacher A, Münzner G, Frotscher M, Haas CA (2011) Epileptiform activity interferes with proteolytic processing of Reelin required for dentate granule cell positioning. *FASEB J* 25:1002–1013.
- Ventrucci A, Kazdoba TM, Niu S, D’Arcangelo G (2011) Reelin deficiency causes specific defects in the molecular composition of the synapses in the adult brain. *Neuroscience* 189:32–42.
- Wasser CR, Herz J (2016) Splicing therapeutics for Alzheimer’s disease. *EMBO Mol Med* 8:308–310.
- Wang MW, Huber KM (2009) Protein translation in synaptic plasticity: mGluR-LTD, Fragile X. *Curr Opin Neurobiol* 19:319–326.
- Weeber EJ, Beffert U, Jones C, Christian JM, Forster E, Sweatt JD, Herz J (2002) Reelin and ApoE receptors cooperate to enhance hippocampal synaptic plasticity and learning. *J Biol Chem* 277:39944–39952.
- Weiss JH (2011) Ca permeable AMPA channels in diseases of the nervous system. *Front Mol Neurosci* 4:42.
- Won S, Incontro S, Li Y, Nicoll RA, Roche KW (2019) The STEP61 interactome reveals subunit-specific AMPA receptor binding and synaptic regulation. *Proc Natl Acad Sci U S A* 116:8028–8037.
- Xian X, Pohlkamp T, Durakoglugil MS, Wong CH, Beck JK, Lane-Donovan C, Plattner F, Herz J (2018) Reversal of ApoE4-induced recycling block as a novel prevention approach for Alzheimer’s disease. *eLife* 7:e40048.
- Xu J, Chatterjee M, Baguley TD, Brouillette J, Kurup P, Ghosh D, Kanyo J, Zhang Y, Seyb K, Ononenyi C, Foscue E, Anderson GM, Gresack J, Cuny GD, Glicksman MA, Greengard P, Lam TT, Tautz L, Nairn AC, Ellman JA, et al. (2014) Inhibitor of the tyrosine phosphatase STEP reverses cognitive deficits in a mouse model of Alzheimer’s disease. *PLoS Biol* 12:e1001923.
- Yang W, Zhou X, Zimmermann HR, Cavener DR, Klann E, Ma T (2016) Repression of the eIF2 α kinase PERK alleviates mGluR-LTD impairments in a mouse model of Alzheimer’s disease. *Neurobiol Aging* 41:19–24.
- Zhang Y, Venkitaramani DV, Gladding CM, Zhang Y, Kurup P, Molnar E, Collingridge GL, Lombroso PJ (2008) The tyrosine phosphatase STEP mediates AMPA receptor endocytosis after metabotropic glutamate receptor stimulation. *J Neurosci* 28:10561–10566.
- Zhang Y, Kurup P, Xu J, Anderson GM, Greengard P, Nairn AC, Lombroso PJ (2011) Reduced levels of the tyrosine phosphatase STEP block β amyloid-mediated GluA1/GluA2 receptor internalization. *J Neurochem* 119:664–672.
- Zhou Z, Hu J, Passafaro M, Xie W, Jia Z (2011) GluA2 (GluR2) regulates metabotropic glutamate receptor-dependent long-term depression through N-cadherin-dependent and cofilin-mediated actin reorganization. *J Neurosci* 31:819–833.