

Journal section: Oral Medicine and Pathology
 Publication Types: Research

doi:10.4317/medoral.23410
<http://dx.doi.org/doi:10.4317/medoral.23410>

Clinical-pathological and sociodemographic factors associated with the distant metastasis and overall survival of oral cavity and oropharynx squamous cell carcinoma

Paulo Goberlânio de Barros-Silva ^{1,2}, Marcela Maria Fontes-Borges ¹, Camila Costa-Dias ¹, José Vitor Mota-Lemos ¹, Maria do Perpétuo Socorro-Saldanha-Cunha ², Eric Fernandes-Souza ², Thinali Sousa-Dantas ¹, Fabrício Bitu-Sousa ²

¹ Department of Dentistry, Unichristus, Fortaleza, Ceará, Brazil

² Ceará Oncology School, Ceará Cancer Institute, Hospital Haroldo Juaçaba, Fortaleza, Ceará, Brazil

Correspondence:

Department of Dentistry
 Unichristus, Rua João Adolfo Gurgel 133
 Aldeota, 60160-196, Fortaleza, Ceará, Brazil
paulo_goberlanio@yahoo.com.br

Received: 25/08/2019
 Accepted: 09/03/2020

Barros-Silva PGd, Fontes-Borges MM, Costa-Dias C, Mota-Lemos JV, Socorro-Saldanha-Cunha MP, Fernandes-Souza E, *et al.* Clinical-pathological and sociodemographic factors associated with the distant metastasis and overall survival of oral cavity and oropharynx squamous cell carcinoma. Med Oral Patol Oral Cir Bucal. 2020 May 1;25 (3):e375-82.

Article Number: 23410 <http://www.medicinaoral.com/>
 © Medicina Oral S. L. C.I.F. B 96689336 - pISSN 1698-4447 - eISSN: 1698-6946
 eMail: medicina@medicinaoral.com

Indexed in:

Science Citation Index Expanded
 Journal Citation Reports
 Index Medicus, MEDLINE, PubMed
 Scopus, Embase and Emcare
 Índice Médico Español

Abstract

Background: The objective of this study was to evaluate the influence of clinical-pathological and sociodemographic factors on the prevalence of distant metastasis (DM) and overall survival in patients with oral cavity and oropharynx squamous cell carcinoma (OOSCC).

Material and Methods: Cross-sectional study based on the records of 404 OOSCC patients evaluated for DM, covering the period 2000-2014. We analysed the influence of age, sex, level of schooling, primary tumor subsite, treatment, marital status, family history of cancer, history of smoking and alcohol consumption, type of health care coverage (private vs. public) and overall survival. Findings were submitted to Fisher's exact test, Pearson's chi-squared test, Mantel-Cox log-rank testing and multinomial and Cox regression analysis (SPSS v. 20.0; $p < 0.05$).

Results: The prevalence of DM was 5.4% (22/404). The respiratory tract was the most affected DM site ($n=9$; 40.9%). Male sex ($p=0.049$), oropharyngeal primary tumor ($p=0.008$), stage T3-4 ($p=0.022$), lymph node metastasis (N+) ($p < 0.001$) and palliative treatment ($p=0.005$) were directly associated with DM. Patients with oral primary tumours ($p=0.343$) and primary oropharyngeal tumours ($p=0.242$) did not differ significantly with regard to the prevalence of DM. N+ was an independent risk factor for DM ($p=0.017$). Five variables independently reduced overall survival: male sex ($p=0.035$), age >65 years ($p=0.046$), indigenous/brown racial type ($p=0.045$), palliative treatment ($p=0.035$) and DM ($p=0.048$).

Conclusions: Lymph node metastasis independently increased the prevalence of DM and, along with male sex, older age, brown racial type and palliative treatment, was independently associated with poor prognosis in patients with OOSCC.

Key words: *Neoplasm metastasis, mouth neoplasms, prognosis, carcinoma, squamous cell.*

Introduction

Oral cavity and oropharynx squamous cell carcinoma (OOSCC) have become a major health concern among public health authorities worldwide due to its high incidence, prevalence and mortality (1). Oral cancer is the sixth-most common type of cancer in the world. In Brazil, the Latin American country with the highest prevalence of OOSCC, it is currently the seventh-most common type of cancer (2).

Approximately 90% of neoplasms affecting the oral cavity and oropharynx are squamous cell carcinomas (3). Affected regions include the lips, buccal mucosa, gums, hard palate, tongue, oral floor, tonsils, soft palate, tongue base, salivary glands, retromolar trigone, vallecula, tonsillar arches, palatine tonsils and the posterior and lateral walls of the oropharynx (4).

On average, patients diagnosed with OOSCC survive for 5 years (5). The main factor involved in the onset of OOSCC is smoking (6), but the incidence of OOSCC has also been shown to be associated with human papillomavirus (HPV). In the Brazilian population, men are more susceptible than women, although in general prognosis appears to be better (4). According to the literature, the clinical-pathological profile of patients with OOSCC is typically male sex, age between 50 and 60 years, and history of smoking. The anatomical site most frequently affected by OOSCC is the tongue and oral floor (4).

OOSCC may be treated with radiotherapy, chemotherapy or surgery, or a combination of these. Treatment and prognosis depend on tumor subsite, time of discovery and staging. Prognosis requires stage grouping based on the characteristics of the primary tumor, lymph nodes and systemic metastases (7).

The cervical lymph nodes are the main site of metastasis (7) but, since little has been published on sites of involvement in OOSCC, the possibility of distant metastases (DM) should be considered. The prevalence of OOSCC-related DMs in the lungs and bones ranges from 52% to 83% (8,9). The mean time between symptom onset and detection of the first DM is ~16 months. Once DMs have been identified, the mean survival time is ~5 months (10). DMs may be detected concurrently with the primary lesion or after treatment (11), and high T and N stages are important risk factors for DM (8). Since the presence of DMs has a strong impact on the prognosis of OOSCC patients (7), the ability to identify risk factors for DM is

indispensable for care providers at cancer centers. The objective of the present study was therefore to evaluate the influence of clinical-pathological and sociodemographic factors on the prevalence of DM and overall survival in OOSCC patients.

Material and Methods

- Type of study and study population

This retrospective study was based on the medical records of 404 OOSCC patients diagnosed and treated at a cancer referral center in Northeastern Brazil (Hospital Haroldo Juaçaba, Ceará Cancer Institute) between 1 January 2000 and 31 December 2014. Only patients with complete TNM clinical staging were included. Patients staged M1 but without identification of the DM site were excluded from the sample. All patient information was retrieved from the institution's digital cancer registry.

- Study variables

The sociodemographic variables included age, sex, racial type, schooling, marital status, family history, history of smoking and alcohol consumption, and type of health care coverage (public vs. private). The clinical variables included histological type, tumor subsite, TNM staging, tumor staging, and treatment(s) administered. Overall survival (expressed in months) was defined as the time from the beginning of treatment (day/month/year) to death (day/month/year) or the last follow-up visit (day/month/year) (11).

- Statistical analysis

All statistical analyses were performed with the software IBM SPSS Statistics for Windows (v. 20.0), using a 95% confidence interval.

We employed Fisher's exact test, Pearson's chi-squared test and multinomial logistic regression model to evaluate the factors associated with DM and 15-year survival. Kaplan-Meier curves were plotted to determine the mean and standard error of overall survival, which was then submitted to Mantel-Cox log-rank test and Cox regression analysis. All the variables were included in the multivariate models.

Results

- Clinical and sociodemographic description of metastatic OOSCC

Twenty-two (5.4%) of the 404 OOSCC patients with available TNM staging had metastases. The DMs were

located in the trachea/bronchi/lungs (n=9; 40.9%), brain (n=6; 27.3%), bone/joint/articular cartilage (n=5; 22.7%), larynx (n=1; 4.5%) or liver (n=1; 4.5%). The sample included significantly more males (n=290; 71.8%) than females (n=114; 28.8%). Moreover, males were more prone to develop DMs ($p=0.049$). Segregating the patients by age, 53.0% (n=214) were up to 65

years old and 47.0% (n=190) were over 65, but the two age groups did not differ significantly with regard to the presence of DMs. Most patients (n=256; 63.4%) were of brown racial type, predominantly with incomplete elementary school education (n=99; 31.7%). However, none of the variables above had any influence on the outcome of DM (Table 1).

Table 1: Influence of clinical and sociodemographic characteristics of distant metastases (DM) in patients with squamous cell carcinoma of the mouth and oropharynx (OOSCC) treated at Hospital Haroldo Juaçaba (Ceará Cancer Institute) between 1 January 2000 and 31 December 2014.

		Total	M		p-Value
			0	1	
Total		404 (100.0%)	382 (94.6%)	22 (5.4%)	-
Gender	Female	114 (28.2%)	112 (29.3%)*	2 (9.1%)	0.049
	Male	290 (71.8%)	270 (70.7%)	20 (90.9%)*	
Age	Up to 65 years old	214 (53.0%)	201 (52.6%)	13 (59.1%)	0.554
	Older than 65	190 (47.0%)	181 (47.4%)	9 (40.9%)	
Race	White	148 (36.6%)	139 (36.4%)	9 (40.9%)	0.669
	Brown	256 (63.4%)	243 (63.6%)	13 (59.1%)	
Schooling degree	Illiterate	86 (27.6%)	80 (27.3%)	6 (31.6%)	0.673
	Elementary school (unfinished)	99 (31.7%)	95 (32.4%)	4 (21.1%)	
	Elementary school (finished)	83 (26.6%)	78 (26.6%)	5 (26.3%)	
	Secondary school (finished)	44 (14.1%)	40 (13.7%)	4 (21.1%)	
Anatomical site	Mouth	351 (86.9%)	336 (88.0%)*	15 (68.2%)	0.008
	Oropharynx	53 (13.1%)	46 (12.0%)	7 (31.8%)*	
Mouth tumors	Tongue	150 (42.7%)	144 (42.9%)	6 (40.0%)	0.343
	Palate	69 (19.7%)	67 (19.9%)	2 (13.3%)	
	Retromolar	53 (15.1%)	50 (14.9%)	3 (20.0%)	
	Oral floor	45 (12.8%)	42 (12.5%)	3 (20.0%)	
	Lip	12 (3.4%)	12 (3.6%)	0 (0.0%)	
	Jugal mucosa	18 (5.1%)	18 (5.4%)	0 (0.0%)	
	Gingiva	4 (1.1%)	3 (0.9%)	1 (6.7%)	
Oropharyngeal Tumors	Lateral wall of the oropharynx	32 (60.4%)	26 (56.5%)	6 (85.7%)	0.242
	Posterior wall of the oropharynx	13 (24.5%)	13 (28.3%)	0 (0.0%)	
	Epiglottis	8 (15.1%)	7 (15.2%)	1 (14.3%)	
T	T1-T2	224 (55.4%)	217 (56.8%)*	7 (31.8%)	0.022
	T3-T4	180 (44.6%)	165 (43.2%)	15 (68.2%)*	
N	N0	285 (70.5%)	277 (72.5%)*	8 (36.4%)	<0.001
	N+	119 (29.5%)	105 (27.5%)	14 (63.6%)*	
Treatment	None	55 (13.6%)	48 (12.6%)	7 (31.8%)*	0.005
	Surgery	48 (11.9%)	48 (12.6%)*	0 (0.0%)	
	Surgery + RT	97 (24.0%)	95 (24.9%)*	2 (9.1%)	
	Surgery + RT + CT	21 (5.2%)	21 (5.5%)*	0 (0.0%)	
	RT	100 (24.8%)	96 (25.1%)*	4 (18.2%)	
	RT + CT	83 (20.5%)	74 (19.4%)	9 (40.9%)*	
Marriage status	No	345 (85.4%)	325 (85.1%)	20 (90.9%)	0.755
	Yes	59 (14.6%)	57 (14.9%)	2 (9.1%)	
Family history	No	332 (82.2%)	314 (82.2%)	18 (81.8%)	1.000
	Yes	72 (17.8%)	68 (17.8%)	4 (18.2%)	
Alcohol history	No	260 (64.4%)	248 (64.9%)	12 (54.5%)	0.323
	Yes	144 (35.6%)	134 (35.1%)	10 (45.5%)	
Smoker history	No	237 (58.7%)	223 (58.4%)	14 (63.6%)	0.626
	Yes	167 (41.3%)	159 (41.6%)	8 (36.4%)	
Referral	Private health plans	188 (46.5%)	180 (47.1%)	8 (36.4%)	0.383
	Public health system	216 (53.5%)	202 (52.9%)	14 (63.6%)	

* $p < 0.05$, Fisher's exact test or Pearson's chi-squared test. DM=distant metastasis; RT=radiotherapy; CT=chemotherapy.

The most frequent tumor site was the mouth (n=351; 86.9%), followed by the oropharynx (n=53; 13.1%). Nevertheless, the oropharyngeal region accounted for significantly more cases with DMs ($p=0.008$). Most tumors (55.4%) were classified as T1-T2, but patients with T3-T4 had a higher prevalence of DM ($p=0.022$). No lymph node metastases (N0) were observed in the majority of patients (70.5%), but patients with this finding had a higher prevalence of DM ($p<0.001$) (Table 1).

Radiotherapy was the most frequently administered treatment (n=100; 24.8%), followed by the combination of surgery plus radiotherapy (n=97, 24.0%), and the combination of radiotherapy plus chemotherapy (n=83; 20.5%). Palliative treatment (n=55; 13.6%) and the combination of radiotherapy and chemotherapy (n=83, 20.5%) were significantly associated with DM ($p=0.005$) when compared to other treatment modalities (Table 1).

Most patients were unmarried (n=345; 85.4%) and/or had no family history of cancer (n=332; 82.2%), no history of smoking (n=237; 58.7%) and no history of alcoholism (n=260; 64.4%). Slightly more than half were covered by private health insurance (n=216; 53.5%). None of these variables were significantly associated with the presence of DMs ($p>0.05$) (Table 1).

The most common subsite of oral tumors was the tongue (n=150; 42.7%), while oropharyngeal tumors were most often located in the lateral wall region (n=32; 60.4%). Patients with oral tumors ($p=0.343$) and patients with oropharyngeal tumors ($p=0.242$) did not differ significantly with regard to the prevalence of DMs (Table 1). Following the multivariate analysis, the only variable which remained independently associated with the presence DMs was lymph node metastasis ($p=0.017$), corresponding to an increase in the prevalence of DM by a factor of 3.16 (Table 2).

- Prognostic factors: analysis of 15-year survival
After 15 years of evaluation, the survival rate was 46.8% (n=189) and the mean overall survival was 85 ± 4 months. Half the patients (median) had died 47 months into the study period (Fig. 1).

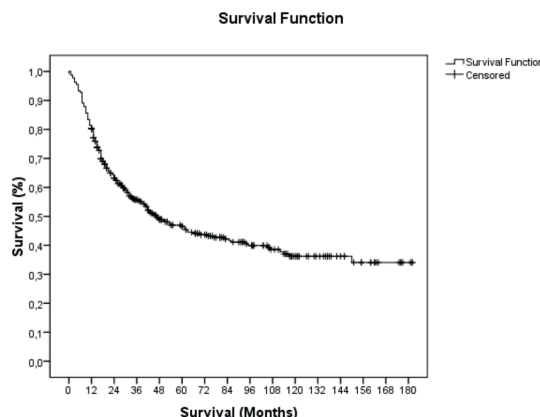


Fig. 1: 15-year follow-up and global survival of patients with squamous cell carcinoma of the oral cavity and oropharynx (OOSCC) treated at Hospital Haroldo Juaçaba (Ceará Cancer Institute) between 1 January 2000 and 31 December 2014 (Kaplan-Meier method).

The overall survival prevalence and the mean survival time were significantly better in female patients ($p=0.001$; $p=0.006$), in younger patients (≤ 65 years) ($p=0.018$; $p=0.024$) and in patients of white racial type ($p=0.043$; $p=0.039$), respectively. The level of schooling influenced the overall 15-year survival: the rate was higher for patients with complete elementary or high school education ($p=0.049$), but the mean survival time did not vary significantly ($p=0.626$). Likewise, survival rates were higher for patients with oropharyngeal tumors than for patients with oral tumors ($p=0.007$), with no difference in mean survival time ($p=0.087$) (Table 3).

Table 2: Multivariate analysis of risk factors for distant metastasis (DM) in patients with squamous cell carcinoma of the mouth and oropharynx (OOSCC) treated at Hospital Haroldo Juaçaba (Ceará Cancer Institute) between 1 January 2000 and 31 December 2014.

	<i>p</i> -Value	Adjusted OR (95% CI)
M1		
Gender (Male vs. Female)	0.113	-
Age(>65 years old vs. <65 years old)	0.546	-
Race (Brown vs. White)	0.163	-
Schooling degree (Illiterate vs. Literate)	0.272	-
Anatomical site (Oropharynx vs. Mouth)	0.075	-
T (T3/4 vs. T1/2)	0.154	-
N (N+ vs. N0)	0.017*	3.16 (1.23 - 8.10)
Treatment (Surgical vs. non-Surgical)	0.315	-
Marriage bond (Yes vs. No)	0.476	-
Family history (Yes vs. No)	0.267	-
Alcohol (Yes vs. No)	0.263	-
Smoking (Yes vs. No)	0.101	-
Referral (Private health plan vs. Public health system)	0.901	-

* $p<0.05$, multinomial logistic regression. OR=odds ratio; CI=confidence interval; DM=distant metastasis.

Table 3: Influence of clinical and sociodemographic variables on the overall survival of patients with squamous cell carcinoma of the mouth and oropharynx (OOSCC) treated at Hospital Haroldo Juaçaba (Ceará Cancer Institute) between 1 January 2000 and 31 December 2014.

		Survival Rate	p-Value	Kaplan Meier Overall Survival time	p-Value
Gender	Female	68 (59.6%)*	0.001 ^a	95.2±7.3*	0.006 ^b
	Male	121 (41.7%)		78.2±4.9	
Age	Up to 65 years old	112 (52.3%)*	0.018 ^a	95.1±6.0*	0.024 ^b
	Older than 65	77 (40.5%)		74.3±5.9	
Race	White	79 (53.4%)*	0.043 ^a	96.9±7.2*	0.039 ^b
	Brown	110 (43.0%)		78.5±5.3	
Schooling degree	Illiterate	33 (38.4%)	0.049 ^a	72.4±7.5	0.626 ^b
	Elementary school (unfinished)	38 (38.4%)		76.6±7.9	
	Elementary school (finished)	46 (55.4%)*		83.2±9.4	
	Secondary school (finished)	23 (52.3%)*		93.8±13.2	
Anatomical site	Mouth	155 (44.2%)	0.007 ^a	82.0±4.5	0.087 ^b
	Oropharynx	34 (64.2%)*		108.4±12.5	
T	T1-T2	115 (51.3%)*	0.041 ^a	93.5±5.9*	0.037 ^b
	T3-T4	74 (41.1%)		75.2±6.1	
N	N0	134 (47.0%)	0.883 ^a	87.5±5.0	0.170 ^b
	N+	55 (46.2%)		81.3±8.2	
M	0	181 (47.4%)	0.314 ^a	86.2±4.4	0.061 ^b
	1	8 (36.4%)		59.6±16.2	
Treatment	None	25 (45.5%)	0.047 ^a	78.9±10.2	0.001 ^b
	Surgery	29 (60.4%)*		113.4±12.0*	
	Surgery + RT	50 (51.5%)*		98.2±8.2	
	Surgery + RT + CT	8 (38.1%)		42.8±8.9	
	RT	35 (35.0%)		56.5±7.4	
	RT + CT	42 (50.6%)		88.6±10.0	
Marriage status	No	158 (45.8%)	0.337 ^a	84.2±4.6	0.472 ^b
	Yes	31 (52.5%)		85.5±9.8	
Family history	No	145 (43.7%)	0.009 ^a	81.7±4.6	0.081 ^b
	Yes	44 (61.1%)*		104.5±10.4	
Alcohol history	No	111 (42.7%)	0.054 ^a	81.9±5.1	0.231 ^b
	Yes	78 (54.2%)		75.0±5.5	
Smoker history	No	104 (43.9%)	0.164 ^a	83.8±5.4	0.675 ^b
	Yes	85 (50.9%)		72.0±5.0	
Referral	Private health plans	90 (47.9%)	0.682 ^a	80.4±5.5	0.720 ^b
	Public health system	99 (45.8%)		83.8±5.8	

*p<0.05; ^aChi-squared test or Fisher's exact test (results expressed as absolute and percentage frequency); ^bMantel-Cox log-rank test (results expressed as mean ± SEM); DM=distant metastasis; RT=radiotherapy; CT=chemotherapy.

Patients with T1-T2 tumors had a higher survival rate ($p=0.041$) and a longer survival time ($p=0.037$) than did patients with T3-T4 tumors. The presence of lymph node metastasis and DM was not significantly associated with survival rate or mean survival time ($p>0.05$). As for treatment form, survival rate ($p=0.047$) and survival time ($p=0.001$) were better for patients treated with surgery or with a combination of surgery and radiotherapy than for patients who received other treatment modalities (Table 3). Marital status, history of alcohol consumption and

smoking, and type of health care coverage had no significant influence on survival rate or time (Table 3). The survival rate was higher for patients with than without family history of cancer ($p=0.009$). In the multivariate analysis, five variables independently reduced overall survival: male sex (HR=1.55; $p=0.035$), age >65 years (HR=1.39; $p=0.046$), brown racial type (HR=1.42; $p=0.045$), non-surgical treatment (HR=1.11; $p=0.035$) and DM (HR=1.71; $p=0.048$), which displayed the highest hazard risk (Table 4).

Table 4: Multivariate analysis and independent risk factors for poor survival in patients with squamous cell carcinoma of the oral cavity and oropharynx (OOSCC) treated at Hospital Haroldo Juaçaba (Ceará Cancer Institute) between 1 January 2000 and 31 December 2014.

Variables	p-Value	Adjusted HR for dead (95% CI)
Gender (Male vs. Female)	0.035	1.55 (1.03-2.33)
Age (>65 years old vs. <65 years old)	0.046	1.39 (1.01-1.93)
Race (Brown vs. White)	0.045	1.42 (1.01-2.01)
Schooling degree (Illiterate vs. Literate)	0.445	-
Anatomical site (Oropharynx vs. Mouth)	0.120	-
T (T3/4 vs. T1/2)	0.438	-
N (N+ vs. N0)	0.695	-
M (M1 vs. M0)	0.048	1.71 (1.01-3.23)
Treatment (Surgical vs. non-Surgical)	0.035	1.11 (1.02-1.22)
Marriage bond (Yes vs. No)	0.563	-
Family history (Yes vs. No)	0.938	-
Alcohol (Yes vs. No)	0.184	-
Smoking (Yes vs. No)	0.349	-
Referral (Private health plan vs. Public health system)	0.778	-

* $p < 0.05$, Cox regression; HR=hazard risk; CI=confidence interval. T=T stage; N=N stage; M=M stage.

Discussion

In the present study, we drew the clinical-pathological and sociodemographic profile of 404 OOSCC patients evaluated for the presence of DM. The prevalence of DM was 5.5%, matching findings in the literature, although percentages may be underestimated depending on sample size. Thus, in a study involving over 1,000 patients, the prevalence of DM was 9.6%. Variations in prevalence may also depend on whether the mouth and oropharynx were evaluated together, as in this study (9). DM affected the lower airways in 40.9% of our patients. Another observational study found 50% of DMs to involve the lungs, making that structure the main target. Although sites other than the lungs were affected in more than half our patients with DM, the lungs appear to be the primary site of DM involvement (10). The next-most prevalent sites of OOSCC-related DM were the central nervous system (27.3%) and bone tissue (22.7%). In another retrospective study, DMs targeted bone tissue in 34% of cases, indicating the need for bone evaluation in patients with high staging (8), especially since stage T3 and T4 tumors are associated with higher prevalence of DM.

Previous studies have shown tumor extension to be independently associated with the risk of DM (12), especially for tumors in the hypopharynx and supraglottis (9). In our sample, patients with oropharyngeal tumors were more likely to have DM than patients with oral tumors, supporting the notion that the presence of primary tumors in the lower neck structures is a risk factor for

DM (10). The greater likelihood of DMs in patients with oropharyngeal tumors may be explained by the greater difficulty of evaluating the lower neck area for primary tumors, but it should also be kept in mind that the lower structures are more vascularized and have better lymph node connectivity (10). In our study, the presence of lymph node metastases was an independent risk factor for DM, suggesting that lymph node involvement may contribute to disease dissemination. Lymph node involvement is reported to be less frequent in HPV-related OOSCC (4). We did not evaluate HPV infection in this study, but the strong association observed between the oropharynx and DM points to other risk factors, such as smoking and alcohol consumption.

The fact that approximately 50% of patients with head and neck SCC have positive lymph nodes at diagnosis shows the need for DM investigation, especially since the presence of DMs significantly reduces survival (13-15). Lymph node involvement is the most important risk factor for OOSCC recurrence (7) and in this study was the only risk factor for DM.

Another risk factor for DM is male sex. This is consistent with previous studies (8), although the distribution seems to depend on the population evaluated (10). Perea *et al.* suggest the distribution is influenced by the timeliness of diagnosis, which in many settings occurs earlier in women (16).

As shown above, the most prevalent subsites were the tongue (oral tumors) and the lateral wall (oropharyngeal tumors), but the subsite had no significant influence on

the prevalence of DM. This diverges from the results of another study showing that the lower and more posterior the subsite, the higher the risk of DM (9).

In this study, the 15-year survival rate of patients with OOSCC was 46.8%. This is somewhat better than would be expected based on the results of Moro *et al.* who registered survival rates of 42% and 38% at 5 and 10 years, respectively (5), and Köhler *et al.* who reported 53.42% overall survival for a sample with a mean follow-up of 44 months (7). Prognosis is even worse in some populations: in southern Thailand the survival rate was 24.1% at 5 years and 25.95% at 10 years. The authors attributed these figures to the more advanced stage at which their patients were diagnosed and to the treatments administered (17).

Socioeconomic status plays a key role in survival statistics. Most of our patients were covered by private health insurance (potentially favoring survival), but in earlier investigations on similar populations conducted by our group, the level of schooling and history of smoking were the main determinants of poor prognosis (11,18). Individuals of low socioeconomic status tend to have limited access to health services and to be less aware of risk factors, which in turn increases the risk of late prognosis and shortens survival. More effective public health policies are required to change this unfortunate scenario characteristic of countries with high income concentration.

The main determinants of good prognosis in our sample were female sex, age <65 years and complete high school education. This is compatible with previous studies arguing that men are generally more prone to smoking and alcoholism. Low levels of schooling may be associated with lack of health awareness, limited access to health services, increased risk of malnutrition, and greater exposure to OOSCC risk factors (4,10,19).

Some authors have concluded that marital status has a significant impact on the prognosis of OOSCC (20), but no such association was observed in our study. In contrast, in our sample the protective factors were female sex, age <65 years, white racial type, high level of schooling, oropharyngeal subsite, T1-T2 staging, and surgical treatment. However, in the multivariate analysis, only male sex, older age, brown racial type, palliative treatment, and DM were associated with poor prognosis, with DM presenting the highest risk of death. Thus, despite the limited sample size and retrospective nature of our study, we observed that male patients with oropharyngeal cancer classified as N+ present a higher prevalence of DM, which is the factor most strongly associated with poor overall survival. Based on this, we recommend submitting patients with N+ OOSCC to systemic evaluation for early detection of DMs, thereby potentially improving prognosis.

References

- Boing A, Antunes J. Socioeconomic conditions and head and neck cancer: a systematic literature review. *Cien Saude Colet.* 2011;16:615-22.
- Losi-Guembarovski R, Menezes R, Polisel F, Chaves V, Kuasne H, Leichsenring A, *et al.* Oral carcinoma epidemiology in Paraná State, Southern Brazil. *Cad Saude Publica.* 2009;25:393-400.
- Chin D, Boyle GM, Porceddu S, Theile DR, Parsons PG, Coman WB, *et al.* Head and Neck Cancer: past, present and future. *Exp Rev Anticancer Ther.* 2006;6:1111-8.
- Petito G, Carneiro MA, Santos SH, Silva AM, Alencar RC, Gontijo AP, *et al.* Human papillomavirus in oral cavity and oropharynx carcinomas in the central region of Brazil. *Braz J Otorhinolaryngol.* 2017;83:38-44.
- Moro J, Maroneze M, Ardenghi T, Barin L, Danesi C. Oral and oropharyngeal cancer: epidemiology and survival analysis. *Einstein.* 2018;16:1-5.
- Harris SL, Kimple RJ, Hayes DN, Couch ME, Rosenman JG. Never-smokers, never-drinkers: unique clinical subgroup of young patients with head and neck squamous cell cancers. *Head Neck.* 2010;32:499-503.
- Köhler H, Kowalski L. Prognostic impact of the level of neck metastasis in oral cancer patients. *Braz J Otorhinolaryngol.* 2012;78:15-20.
- Al-Othman MO, Morris CG, Hinerman RW, Amdur RJ, Mendenhall WM. Distant metastases after definitive radiotherapy for squamous cell carcinoma of the head and neck. *Head Neck.* 2003;25:629-33.
- León X, Quer M, Orús C, del Prado Venegas M, López M. Distant metastases in head and neck cancer patients who achieved loco-regional control. *Head Neck.* 2000;22:680-6.
- Dedivitis RA, Denardin O, Castro MA, Pfuetszenreiter EG. Risk factors for distant metastasis in head and neck cancer. *Rev Col Bras Cir.* 2009;36:478-81.
- Dantas TS, Barros Silva PG, Sousa EF, Cunha Mdo P, Aguiar AS, Costa FW, *et al.* Influence of Educational Level, Stage, and Histological Type on Survival of Oral Cancer in a Brazilian Population: A Retrospective Study of 10 Years Observation. *Medicine (Baltimore).* 2016;95: 2314-24.
- Massano J, Regateiro FS, Januário G, Ferreira A. Oral squamous cell carcinoma: Review of prognostic and predictive factors. *Oral Surg Oral Med Oral Pathol Oral Radiol Endod.* 2006;102:67-76.
- Jemal A, Siegel R, Ward E, Hao Y, Xu J, Murray T, *et al.* Cancer statistics, 2008. *CA Cancer J Clin.* 2018;58:71-96.
- Howell GM, Grandis JR. Molecular mediators of metastasis in head and neck squamous cell carcinoma. *Head Neck.* 2005;27:710-7.
- Dünne AA, Müller HH, Eisele DW, Kessel K, Moll R, Werner JA. Meta-analysis of the prognostic significance of perinodal spread in head and neck squamous cell carcinomas (HNSCC) patients. *Eur J Cancer.* 2006;42:1863-8.
- Perea LME, Peres MA, Boing AF, Antunes JLF. Trend of oral and pharyngeal cancer mortality in Brazil in the period of 2002 to 2013. *Rev Saude Publica.* 2018;52:10.
- Pruegsanusak K, Peeravut S, Leelamanit V, Sinkijcharoenchai W, Jongsatitpaiboon J, Phungrassami T, *et al.* Survival and prognostic factors of different sites of head and neck cancer: an analysis from Thailand. *Asian Pac J Cancer Prev.* 2012;13:885-90.
- Colares N, Souza Rodrigues DF, Freitas MO, Dantas TS, Cunha MDPSS, Sousa FB, *et al.* Smoking History Decreases Survival in Patients with Squamous Cell Carcinoma of the Mouth: A Retrospective Study with 15 Years of Follow-up. *Asian Pac J Cancer Prev.* 2019;20:1781-7.
- Andrade J, Santos CA, Oliveira M. Associated factors with oral cancer: a study of case control in a population of the Brazil's Northeast. *Rev Bras Epidemiol.* 2015;18:894-905.
- Wong YK, Tsai WC, Lin JC, Poon CK, Chao SY, Hsiao YL, *et al.* Socio-demographic factors in the prognosis of oral cancer patients. *Oral Oncol.* 2006;42:893-906.

Funding

None declared.

Conflict of interest

None declared.

Ethics

The study protocol was previously approved by the research ethics committee of Hospital Haroldo Juaçaba (Ceará Cancer Institute) and filed under #2.191.839.