

## Transporting carriers for intracellular targeting delivery via non-endocytic uptake pathways

Zuhong Li, Yanhong Zhang, Danhua Zhu, Shuiqing Li, Xiaopeng Yu, Yalei Zhao, Xiaoxi Ouyang, Zhongyang Xie and Lanjuan Li

State Key Laboratory for Diagnosis and Treatment of Infectious Diseases, Collaborative Innovation Centre for Diagnosis and Treatment of Infectious Diseases, The First Affiliated Hospital, Zhejiang University School of Medicine, Hangzhou, PR China

### ABSTRACT

To develop novel therapies for clinical treatments, it increasingly depends on sophisticated delivery systems that facilitate the drugs entry into targeting cells. Profound understanding of cellular uptake routes for transporting carriers promotes the optimization of performance in drug delivery systems. Although endocytic pathway is the most important part of cellular uptake routes for many delivery systems, it suffers the trouble of enzymatic degradation of transporting carriers trapped in endosomes/lysosomes. Therefore, it is desirable to develop alternative transporting methods for delivery systems via non-endocytic pathways to achieve more effective intracellular delivery. In this review, we summarize the literature exploring transporting carriers that mediate intracellular delivery via non-endocytic pathways to present the current research status in this field. Cell-penetrating peptides, pH (low) insertion peptides, and nanoparticles are categorized to exhibit their ability to directly transport various cargos into cytoplasm via non-endocytic uptake in different cell lines. It is hoped that this review can spur the interesting on development of drug delivery systems via non-endocytic uptake pathway.

### ARTICLE HISTORY

Received 24 August 2017  
Revised 5 October 2017  
Accepted 10 October 2017

### KEYWORDS

Transporting carriers; non-endocytic uptake; delivery systems; intracellular delivery; internalization mechanism

### Introduction

Rapid advance in biotechnology and nanotechnology have permitted the incorporation of therapeutic and imaging agents into a variety of delivery systems, offering new opportunities for treatment, detection, and prevention in clinical application (Jain & Stylianopoulos, 2010; Kratz & Warnecke, 2012; Gandhi et al., 2014). Many biologically active substance need to be delivered into intracellular compartments to exert their therapeutic effects in cytoplasm or other specific organelles, such as nucleus and mitochondria. However, the nature of biological membranes restricts the intracellular delivery of drug delivery systems. The cellular plasma membrane constitutes an effective barrier and regulates the transport of cargoes inside and outside the cell (Prestegard & O'Brien, 1987; Jahn & Sudhof, 1999). Hence, the internalization pathway for entry into cells and the intracellular fate of transporting carriers are key issues for delivered cargoes to be efficient.

The internalization of drug delivery systems with their cargoes may utilize one or several physiological routes to enter into cells. In many cases, transporting carriers, such as nanoparticles (NPs), can be internalized via endocytosis after immobilization on the outer leaflet of plasma membrane. Endocytosis represents the natural route for macromolecules into cells (Mellman, 1996; D'Hondt et al., 2000; Doherty & McMahon, 2009). The plasma membrane locally invaginates

or forms protrusions, surrounding, and enclosing the loaded substance. After membrane fission, the cargo molecules are located inside the lumen of the newly formed vesicles, mostly referred to as endosomes. Then, these vesicles are tethered to the next stop on their itinerary and fuse to their ultimate organelles, such as lysosomes. Although dozens of drug delivery systems can enter into cells via endocytosis, generally they are inevitably entrapped in endosomes and subsequent lysosomes, which are regarded as the overriding intracellular barriers for some payloads due to the harsh environment (Savic et al., 2006; Hillaireau & Couvreur, 2009). The lysosomes are the most acidic compartments in most cells, where low pH facilitates the activity of lysosomal hydrolases whose optimal pH ranging from 4.5 to 5.5, providing favorable conditions for enzymatic hydrolyses (Mellman et al., 1986). In this circumstance, many substrates become acid-denatured, and thus more susceptible to enzymatic degradation.

For some therapeutic agents, they have to be firstly delivered into the cytosol to become active drugs. Yet, the journey of transporting carriers entrapped inside endosomes and lysosomes results in degradation of the loaded therapeutic drugs. Accordingly, direct cytosolic delivery of cargo molecules via non-endocytic pathways is an optimal approach, and minimizes the degradation loss of transported agents. Therefore, it is desirable to develop new alternative delivery

methods for enhanced non-endocytic uptake pathway to circumvent the entrapment in endosomes/lysosomes altogether. This review attempts to provide an overview of different transporting carriers currently known to be involved in non-endocytic uptake pathways for direct intracellular delivery. We hope that the review could be a valuable starting point for researchers who wish to investigate and develop delivery systems with the ability to transport cargo molecules via non-endocytic pathway.

## Uptake mechanism of transporting carriers

### Endocytic pathways

Endocytosis, the natural entry route for extracellular macromolecules into cell, encompasses a variety of mechanistically complex processes, which is still unveiling (Mellman, 1996). Eukaryotic cells display a number of distinct endocytic mechanisms. The processes of endocytosis play key roles in regulating mitosis, antigen presentation, and cell migration. They share some characteristics and effectors and may compensate for one another when one is abrogated. Several excellent reviews have presented an overview on this rapidly growing field (D'Hondt et al., 2000; Doherty & McMahon, 2009; Kumari et al., 2010; Iversen et al., 2011). Commonly the following main endocytic routes are distinguished: phagocytosis, clathrin-mediated endocytosis, caveolae-mediated endocytosis (CvME), and macropinocytosis.

### Phagocytosis

Phagocytosis is a special type of endocytic pathway, which is defined as the engulfment of cells, bacteria, and large solid particles. It is typically restricted to specialized professional phagocytes such as macrophages, neutrophils, monocytes, and dendritic cells (Aderem & Underhill, 1999; Swanson, 2008). Phagocytosis is mediated by cup-like membrane extensions that are usually larger than 1  $\mu\text{m}$  to internalize particles. It is noticed that the geometry, size, stiffness, and topography of the targeting particles all influence phagocytosis (Champion & Mitragotri, 2006; Underhill & Goodridge, 2012), which may give an impact on internalization of delivery systems by phagocytic cells. The phagosomes, containing opsonized complexes, will mature and fuse with lysosomes where the acidic environment and multiple enzymes promote degradation of internalized contents.

### Clathrin-mediated endocytosis

Clathrin-mediated endocytosis is clathrin-mediated, receptor-dependent and GTPase dynamin-required endocytic pathway. In this pathway, a series of downstream events are activated after the recognition of ligands by receptors on the cell surface. The process comprises initiation of clathrin-coated pits, recruitment of cargo-specific proteins, coat assembly, dynamin-mediated scission, and uncoating by the ATPase. Then, the endocytotic vesicles are integrated into late endosomes and deliver their cargoes to lysosomes (Luzio et al., 2009).

### Caveolae-mediated endocytosis

CvME is a type of cholesterol, dynamin-dependent, and receptor-mediated pathway (Nichols, 2003). CvME forms a special flask-shaped structure on the cell membrane called caveola, which is a plasma membrane domain enriched in cholesterol and sphingolipid (Parton & del Pozo, 2013). The fission of the caveolae from the cell membrane is mediated by the GTPase dynamin, and then generates the cytosolic caveolar vesicle (Hillaireau & Couvreur, 2009). The intracellular fate of caveolar vesicle remains under debate. It is worth noting that one research group draws the conclusion that the cavesome, a previously unrecognized membrane-bound organelle, itself is an artifact in cells over-expressing different constructs of caveolin-1 and that the term cavesome no longer should be used. This is especially important in light of CvME being regarded as a route away from lysosomal degradation. The caveolae that do pinch off are considered to fuse with normal acidified endosomes being able to transfer loaded cargos to lysosomes (Hayer et al., 2010; Parton & Howes, 2010; Iversen et al., 2011). Moreover, collected data from Kiss et al. support the discovery that sometimes the fusion of caveolar vesicle with lysosomes cannot be avoided (Kiss & Botos, 2009).

### Macropinocytosis

Macropinocytosis, a type of distinct pathway, is typically characterized by the formation of membrane ruffles and the engulfment of large volumes of fluid into large uncoated vacuoles, known as macropinosomes (Sarkar et al., 2005; Kerr & Teasdale, 2009). Macropinosomes form spontaneously or in response to growth factors or other signals (Kaplan et al., 2005). Their formation can be also induced by bacteria, apoptotic bodies, and viruses (Mercer & Helenius, 2009). Distinct from clathrin-coated vesicles and caveolae, the macropinosomes have no apparent coat structures and are heterogeneous in vesicular size distribution (Hewlett et al., 1994). Macropinosomes mature by modification of their lipid and regulatory membrane protein composition, before fusion with the degradative compartments of the cells.

### Non-endocytic pathways

As the most important part of cellular uptake routes, the process of endocytic pathway has received a great deal of attention in the last couple of years, especially for clathrin-mediated endocytosis. The mechanisms that are involved in the process of recruiting cargo into developing pits and subsequently forming vesicles are becoming increasingly understood. In contrast, there have been, so far, a few of studies concerning on non-endocytic uptake pathway, because this pathway is usually poorly considered as it challenges the idea of non-permeability of membranes to large hydrophilic molecules (Jahn & Sudhof, 1999). However, the discovery of cell-penetrating peptides (CPPs) and some NPs capable of direct cytosolic delivery reminds that there are naturally existing non-endocytic pathways, although a tremendous amount of research work is needed to reveal the specific details behind this mechanism. In the following contents, available

articles covering the transporting carriers for non-endocytic pathway are summarized and classified into two categories to discuss.

## CPPs and pHLIPs-mediated non-endocytic uptake

### Cell-penetrating peptides

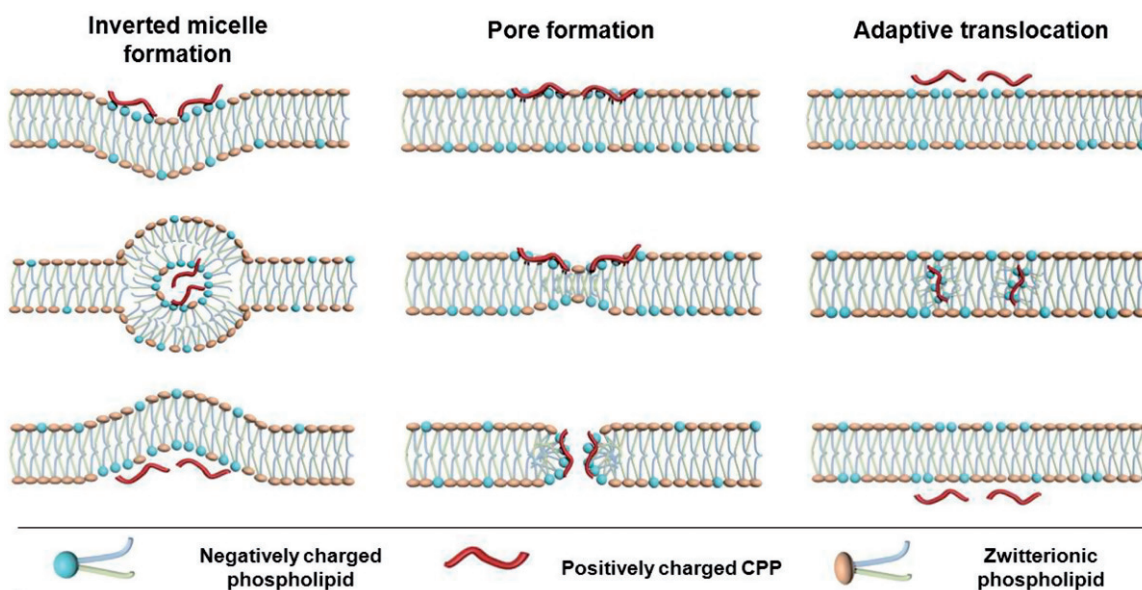
CPPs, also referred as protein transduction domains, are a class of diverse peptides typically with 5–30 amino acids, which derived from natural proteins and synthetic peptides (Bechara & Sagan, 2013; Shi et al., 2014). Commonly, based on their physical-chemical properties, CPPs can be classified into three subgroups (Milletti, 2012): cationic CPPs, amphipathic CPPs, and hydrophobic CPPs. Since the two first CPPs, Tat (Green et al., 1989; Vives et al., 1997) and Penetratin (Derossi et al., 1994) originated from transactivating protein of HIV-1 and *Drosophila* homeoprotein, respectively, were discovered more than 20 years ago, CPPs have been reported in a number of applications (Gupta et al., 2005; Bolhassani, 2011). CPPs serving as transporting carriers have been employed to deliver various cargoes including proteins, peptides, nucleic acids, and contrast agents into cells *in vitro* and *in vivo*.

Quantitation of the membrane translocation efficiency of cationic oligopeptides was determined, allowing for selective measurement of direct translocation (Zaro & Shen, 2003). It was found that Tat-(YGRKKRRQRRR), YG(R)<sub>9</sub> and guanidinated-YG(K)<sub>9</sub> were preferentially translocate into the cytosolic compartment, while YG(K)<sub>9</sub> was primarily endocytosed in Chinese hamster ovary cells. Studies of various oligoarginine peptides (4–15 residues) demonstrated that internalization through direct translocation remained constant, while the amount internalized via endocytosis increased with arginine length, indicating that oligopeptide translocation requires the guanidine structure of arginine, while endocytosis depends only on the number of positive charges. Moreover, direct translocation of YG(R)<sub>9</sub> was not affected by incubation at 16 °C as compared to that at 37 °C, and only partially inhibited at 4 °C in Chinese hamster ovary cells (Zaro & Shen, 2005). Membrane translocation was not inhibited to the same extent as endocytosis following treatment with ammonium chloride, hypertonic medium, amiloride, or filipin. Intracellular trafficking of cargos attached nona-arginine (GLPK(FITC)RRRRRRRRR) were measured in four cancer cell lines with a series of microenvironments altered by the presence of endocytic inhibitors and different temperature (Ma et al., 2011). The results revealed that FITC-CPPs may enter cells rapidly via direct translocation in addition to the endocytic route, while Avidin-CPPs tend to be internalized by macropinocytosis in an energy-dependent manner with slower rates. Kinetics of translocation into cells with NrTPs (YKQCHKKGGKKGSG) in lymphocyte and monocyte cell was addressed (Rodrigues et al., 2013). Uptake results obtained at 4 °C or using chemical endocytosis inhibitors support the importance of non-endocytic mechanisms in the cellular internalization of NrTPs. Fretz et al. analyzed the effects of temperature, concentration, and plasma membrane cholesterol levels on the uptake of Alexa Fluor 488 attached CPPs

(R8) in KG1a cells (Fretz et al., 2007). The results found that Alexa Fluor 488-R8 uniformly labels the cytoplasm and nucleus at 4–12 °C, suggesting a pathway of direct translocation across the plasma membrane. Relatively small increases in peptide concentration or sequestering plasma membrane cholesterol can enhance the fraction of the peptide that localizes to the cytosol. These processes seemed to be specific for the peptide, as they did not observe any parallel increases in membrane permeability or toxicity.

Mass spectrometry-based method was utilized to quantify the internalization of biotin-conjugated Tat peptide (Biot-G<sub>4</sub>-RKKRRQRRRPPQ) and R<sub>9</sub> (Biot-G<sub>4</sub>-R<sub>9</sub>) at 37 and 4 °C in both wild type and proteoglycan-deficient Chinese hamster ovary cells (Jiao et al., 2009). Both direct translocation and endocytosis were internalization pathways for Biot-CPPs. Direct translocation occurred at low extracellular peptide concentration, whereas endocytosis was activated at higher concentrations. Direct translocation operates in a narrow time window, which implied a specific lipid/peptide co-import in cells. Zhang et al. developed stearic acid modified arginine octamer derivatives (SAR<sub>6</sub>EW) for the enhanced transport of insulin (Zhang et al., 2015). A significant decrease in the fluorescent intensity was observed when the cells were treated with SAR<sub>6</sub>EW-insulin at 4 °C. However, there were still fluorescent signals achieved in treated cells, suggesting that both energy dependent pathway and energy-independent direct translocation were involved, which were consistent with the results of inhibitor studies. The protein uptake and translocation efficiency of four avidin linked CPPs (Penetratin, Tat peptide, Transportan, and pVEC) were studied in HeLa cells (Saalik et al., 2004). The results demonstrated that even under conditions of cellular energy depletion, ceasing of cellular traffic, and partial depolarization of plasma membrane, peptide-protein complexes still entered into cells, suggesting an energy, and endocytosis independent internalization pathway. Pan et al. evaluated the internalization process of designed CPPs, STR-KV (stearylation-HHHKKKVVVVVV), complexed with siRNA targeting at the *glyceraldehyde-3-phosphate dehydrogenase* (GAPDH) gene in A549 and CHO-K1 cells (Pan et al., 2016). It was elucidated that the electrostatic interaction of STR-KV/siRNA complex with heparin sulfate proteoglycans at the cell membrane surface triggered the energy-independent uptake of the majority of the complexes, using heparin treatment, and chemical endocytic inhibitors. Intracellular trafficking and internalization kinetics observed by confocal microscopy confirmed that the complex was uptaken through a non-endocytic pathway.

Direct translocation involves destabilization of the plasma membrane in an energy- and temperature-independent manner. Some hypotheses, including inverted micelle formation (Derossi et al., 1996), pore formation (Matsuzaki et al., 1996), adaptive translocation (Rothbard et al., 2004), the carpet-like model (Pouny et al., 1992), and the membrane thinning model (Lee et al., 2005), were proposed to explain direct translocation of CPPs across the lipid bilayer (Figure 1). The first step in all these mechanisms comprises interaction of the positively charged CPP with negatively charged components of membrane, such as phospholipid bilayer and heparin. Peptide folding and transient destabilization of lipid



**Figure 1.** The proposed internalization mechanisms of direct translocation for positively charged CPPs.

membrane are involved in this process. The subsequent steps of internalization depend highly on the peptide concentration, peptide sequence and lipid composition in each model.

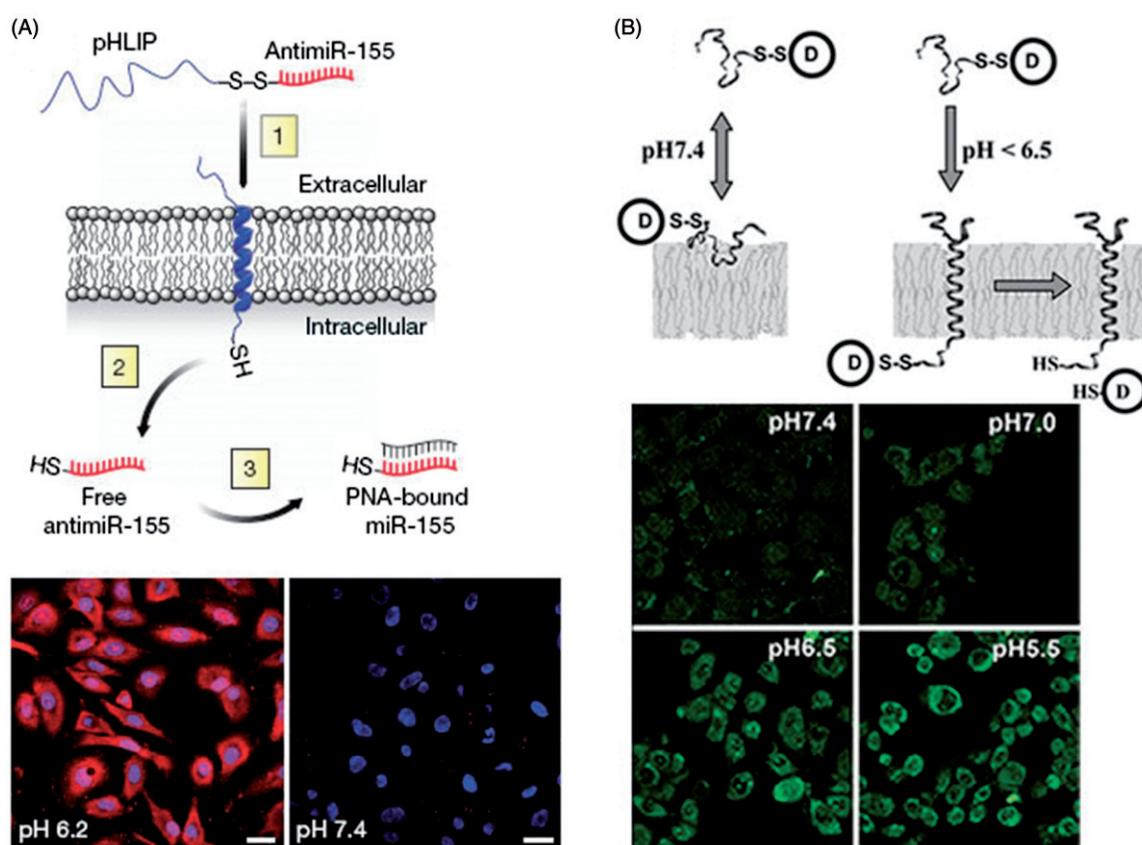
The inverted micelle model was proposed for the direct translocation of penetratin (Derossi et al., 1998; Alves et al., 2008; Joanne et al., 2009; Kawamoto et al., 2011). In addition to the interaction between the positively charged CPP and negatively charged lipid components, interaction between hydrophobic residues, such as tryptophan and the hydrophobic part of the membrane is also shown to be involved in this mechanism. Pore formation model consists of barrel stave model and toroidal model (Deshayes et al., 2006; Hecce & Garcia, 2007; Hecce et al., 2009). The barrel stave model shows that helical CPPs form a barrel by which hydrophobic residues are close to the lipid chains, and hydrophilic residues construct the central pore. In the toroidal model, lipids bend in a way that the CPP is always close to the headgroup, both CPP and lipids forming a pore. In both models, pores appear when the peptide concentration is beyond a certain concentration threshold, which is varied for different CPPs. The adaptive translocation model proposes that oligoarginines can possess either a hydrophilic or hydrophobic character depending on the associated counteranion due to the capacity of guanidinium headgroups to form bidentate hydrogen bonds (Wender et al., 2008). Then, the interaction between guanidinium-rich peptides and the phosphate lipid headgroups will mask the peptide charge, attenuating its polarity and enabling its diffusion into and across the plasma membrane.

### **pH (Low) insertion peptides**

pH (Low) insertion peptides (pHLIPs) are water soluble and moderately hydrophobic polypeptides originally derived from the bacteriorhodopsin C helix. At neutral pH, pHLIP is in equilibrium between soluble and membrane-bound unstructured forms, whereas in a low pH environment, a pHLIP is

triggered by acidity to fold and insert across a membrane to form a stable trans-membrane  $\alpha$ -helix (Hunt et al., 1997; Andreev et al., 2009; Musial-Siwiek et al., 2010). It is shown that the N terminus of pHLIP stays outside of the bilayer, while the C terminus inserts across the lipid bilayer (Reshetnyak et al., 2007). The insertion of pHLIP into lipid bilayer is associated with an energy release which can be used to move cargo molecules across a membrane, raising the possibility of transporting drug into cell cytoplasm (Karabadzhak et al., 2012). It is noting that pHLIP-mediated translocation of cargo molecules into cells is not mediated by endocytosis or interactions with cell surface receptors (Figure 2).

Peptide nucleic acid (PNA) can inhibit both transcription and translation of gene to which it has been targeted, which holds promise for its use for antigene and antisense therapy (Nielsen et al., 1991; Ray & Norden, 2000; Kaihatsu et al., 2004). However, the major obstacle is the delivery of PNA across the membrane into cytoplasm. Reshetnyak et al. examined the ability of pHLIP to translocate a fluorescent-labeled 12-base PNA (TAMRA-CATAGTATAAGT-Cys) into HeLa cells (Reshetnyak et al., 2006). After incubation of pHLIP-S-S-PNA-TAMRA with HeLa cells, no retention of fluorescence was seen in the cells at normal pH, but significant cytoplasm fluorescent staining of cells was observed at low pH value. By contrast, the treatment of cells with PNA-TAMRA did not show fluorescent staining of cells at pH 6.5 or 7.4. Moreover, they prepared pHLIP conjugated to dansyl dye Ph-TRITC via a disulfide bond, and tested the construct with live HeLa cells at different pH values. The results showed that the uptake of dansyl dye was significantly higher at low pH. The relative uptake at pH 6.5 was about 4.3-fold higher than that at pH 7.4. pHLIP was also employed to translocate phalloidin, a cell impermeable polar toxin, to inhibit the proliferation of HeLa, JC, and M4A4 cancer cells in a pH-dependent fashion (An et al., 2010; Wijesinghe et al., 2011). The polypeptide complex carried phalloidin attaching to the C terminus via a disulfide bond that was cleaved inside cell cytoplasm to release the



**Figure 2.** Direct cytosolic cargos delivery mediated by pHLIP. (A) Schematic of pHLIP-mediated PNA anti-miR delivery and confocal projection of A549 cells incubated with labeled pHLIP-anti-miR at different pH (Cheng et al., 2015). Reproduced with permission. Copyright 2015, Nature Publishing Group. (B) Schematic diagram of pHLIP for cargo delivery into cell and fluorescence images of HeLa cells incubated with cleavable pHLIP-S-S-dansyl construct at different pH value (Reshetnyak et al., 2006). Reproduced with permission. Copyright 2006, National Academy of Sciences.

toxin. Thevenin et al. (2009) studied the properties of cell impermeable cargo molecules that can be delivered into cell cytoplasm by pHLIP in cancer cells. Four cyclic hexapeptides were selected as model cargo molecules, which contain four X positions that were varied as Ser, Asp, Asn, or Arg residues (NC(X)<sub>4</sub>), allowing adjustments of cargo polarity. The results indicated that NC(Ser)<sub>4</sub> and NC(Asp)<sub>4</sub> cargos were translocated and released into cell cytoplasm only when the cells were incubated at pH 6.2. These findings in the cancer cells correlated very well with that obtained with the lipid vesicles, which supported that pHLIP peptides traversed cell membrane via direct insertion into the bilayer, reinforcing the view of pHLIP-assisted translocation independent of membrane protein or endocytosis. Then, they developed a pHLIP-based delivery platform that targeted the acidic tumor microenvironment to evade systemic clearance by the liver and facilitated cell entry via a non-endocytic pathway (Cheng et al., 2015). The attachment of anti-miRNAs to pHLIP produced a novel construct that could transport anti-miRNAs across plasma membranes under acidic conditions in solid tumors (pH approximately 6), and effectively inhibit the miR-155 oncomiR in a mouse model of lymphoma.

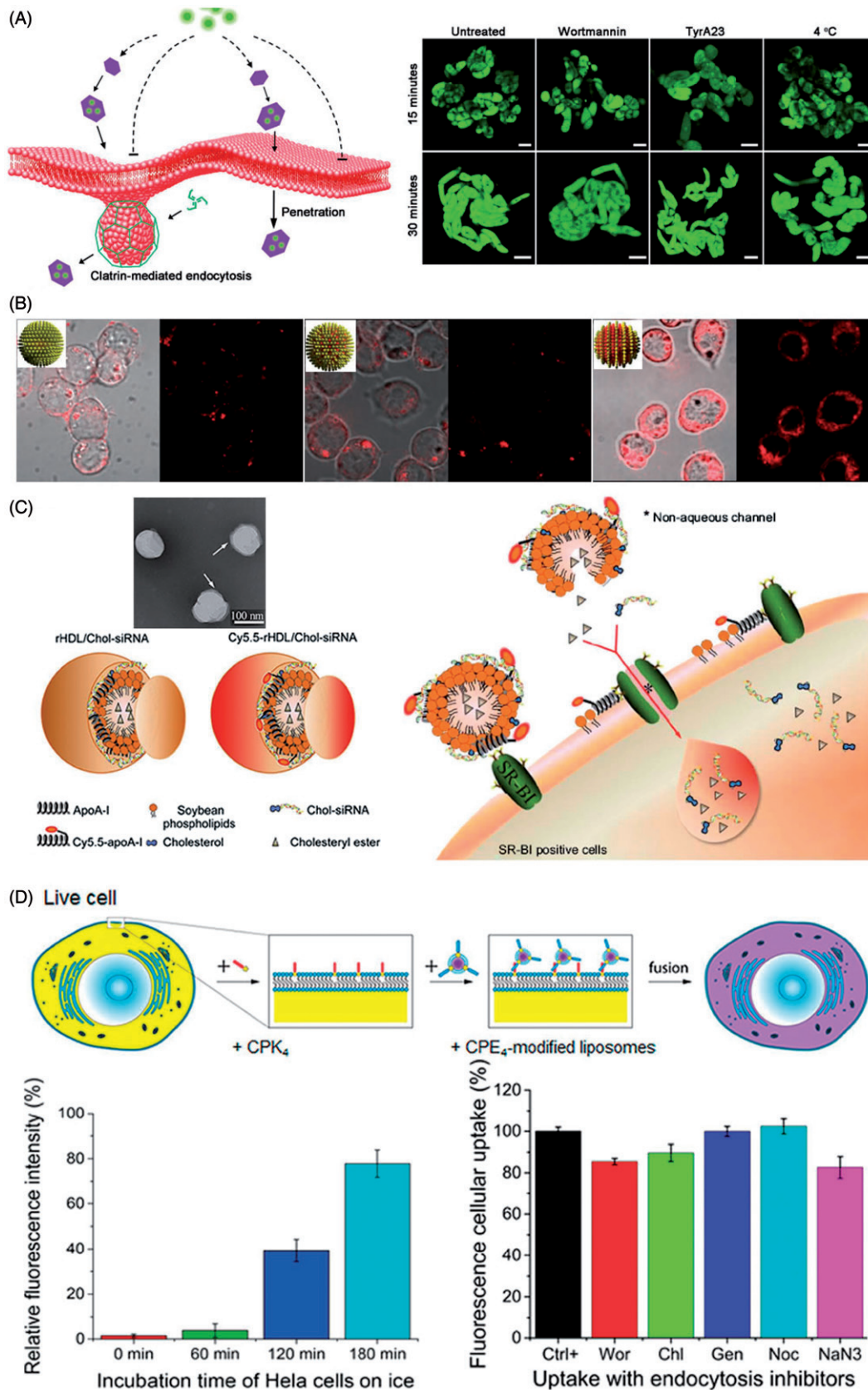
In contrast to CPPs, pHLIPs still stay in the cellular membrane after insertion, translocating one end into cytoplasm and leaving the other end in the extracellular environment. Thus, pHLIP possesses dual delivery capabilities, which can tether cargo molecules to cellular surfaces and/or can translocate and release cell impermeable molecules into

cytoplasm. Usually, polar cargo molecule attaching to the C-terminus of pHLIP utilizes a chemical bond that is stable outside the cellular environment, but cleaved inside the cytoplasm. The chemical conjugation of polar molecules to pHLIPs is convenient, since Lys and Cys residues can be easily introduced in the synthesis of polypeptides.

### Nanoparticle mediated non-endocytic uptake

NPs offer new opportunity to improve the delivery of various drugs into cells (Giljohann & Mirkin, 2009; Riehemann et al., 2009; Jain & Stylianopoulos, 2010; Dreaden et al., 2012). Previous studies have demonstrated that different endocytic mechanisms involved in the cellular internalization of NPs, which dramatically influenced by physicochemical properties of NPs, such as size, surface charge and composition (Gratton et al., 2008; Harush-Frenkel et al., 2008; Mailander & Landfester, 2009; Ernsting et al., 2013). Recent updates of knowledge about uptake pathways imply that NPs can pass through cell membrane and entry into cytoplasm via non-endocytic pathway (Figure 3).

Bao et al. reported that the positively charged delaminated layered double hydroxide lactate nanosheets (LDH-lactate-NS) with 0.5–2 nm thickness and 30–60 nm diameter could enter the cytoplasm in terms of free penetration of plasma membrane in BY-2 cell line (Bao et al., 2016). The LDH-lactate-NS electrostatically binding negative charged fluorescent dyes or ssDNA to form neutral



**Figure 3.** Nanoparticle mediated intracellular delivery via non-endocytic uptake. (A) Schematic diagram of LDH-Lactate-NS internalization via free penetration and fluorescence images of BY-2 cells incubated with LDH-lactate-NS-TRITC under different conditions (Bao et al., 2016). Reproduced with permission. Copyright 2016, Nature Publishing Group. (B) Fluorescence images of dendritic cells incubated with surface functional gold nanoparticles at 4 °C (Verma et al., 2008). Reproduced with permission. Copyright 2008, Nature Publishing Group. (C) Proposed mechanism for SR-BI mediated cytosolic delivery of FAM-Chol-siRNA in Cy5.5-rHDL/FAM-Chol-siRNA complexes (Ding et al., 2014). Reproduced with permission. Copyright 2014, Elsevier. (D) Scheme of fusion between cell and liposomes as well as the effect of ice incubation and endocytic inhibitors on delivery of fluorescent dyes by liposomes to HeLa cells (Yang et al., 2016). Reproduced with permission. Copyright 2016, American Chemical Society.

nano-aggregates were internalized into cytosol via non-endocytic pathway without uptake inhibition of low temperature and inhibitor treatment. Bossi et al. found that cobalt oxide NPs, but neither cobalt nor cobalt oxide NPs surrounded by protein corona, can enter inside the cells by penetrating plasma membranes (Bossi et al., 2016). Mature *Xenopus* oocytes were filled with Calcein, whose fluorescence was strongly quenched by divalent metal ions, and exposed to different NPs to quantify quenching, indicating the increase of  $\text{Co}^{2+}$  concentration released from cobalt NPs located in the cytosol. The results suggested that  $\text{Co}_3\text{O}_4$  NPs succeed in penetrating the plasma membrane and caused the observed quenching activity in cytoplasm. Quenching experiments under the condition of Dynasore pre-incubation showed that the internalization of  $\text{Co}_3\text{O}_4$  NPs was dynamin-independent process. Fully grown oocytes exposed to Lucifer yellow and  $\text{Co}_3\text{O}_4$  NPs demonstrated that there was no formation of endocytotic vesicles after  $\text{Co}_3\text{O}_4$  NPs exposure. One interesting study stated that 6 nm gold NPs coated with subnanometer striations of alternating anionic and hydrophobic groups can directly penetrate the plasma membrane into cytoplasm via energy-independent pathway without bilayer lipid disruption in dendritic cells (Verma et al., 2008). Those NPs were modified with a shell of hydrophobic and anionic ligands regularly arranged in ribbon-like domains of alternating composition. Under the temperature of  $4^\circ\text{C}$ , the 'striped' NPs still entered cells at substantial levels, exhibiting a diffuse fluorescence pattern consistent with cytosolic location. Further test in the presence of pharmacological inhibitors of sodium azide and 2-deoxyglucose showed that 'striped' NPs readily entered the cytoplasm under the condition of inhibited active uptake processes.

A research group reported that amino functionalized cross-linked polystyrene microspheres with diameters of 0.2, 0.5, and  $2\ \mu\text{m}$  were internalized via an energy-independent non-endocytic pathway in mouse melanoma cells (Alexander et al., 2010). The uptake of microsphere was independent of both ATP and cholesterol depletion, which were both required for endocytosis. Utilization of a number of inhibitors to examine endocytosis had no impact on microsphere uptake, meanwhile lysosomal, and endosomal tracking agents did not show co-localization of microsphere with lysosomes/endosomes. In another study, arginine analogs conjugated mesoporous silica nanoparticles (MSN) (300 nm) enhanced the uptake through non-endocytotic pathway by introducing Arg analogs with varying side chain lengths in HeLa cells (Wu et al., 2013). After cells were treated with sodium azide and 2-deoxy-D-glucose, 20% of the cells still showed uptake of MSN upon inhibition of endocytosis, suggesting portion of the MSN crossed the cell membrane through energy-independent non-endocytotic pathways. Mu et al. found that amorphous silica NPs with 14 nm diameters can directly enter into A549 cells in the absence of serum proteins (Mu et al., 2012). Transmission electron microscopy and energy-dispersive X-ray spectroscopy demonstrated that silica NPs entered into cytoplasm but not within membrane bound vesicles or in the nucleus.

A novel nanoparticle was described for direct drug delivery into the cytosol of live cells *in vitro* and *in vivo* utilizing

membrane fusion between liposomes and cells (Yang et al., 2016). A pair of complementary coiled-coil lipopeptides (CPK<sub>4</sub> and CPE<sub>4</sub>) was integrated in the cellular membranes and lipid bilayer of liposomes respectively, which resulted in targeted membrane fusion with concomitant release of encapsulated cargoes including fluorescent dyes and doxorubicin entrapped in liposomes. Utilization of a wide variety of endosome trackers and endocytosis inhibitors demonstrated that the dominant pathway for intracellular delivery is membrane fusion between liposomes and plasma membrane of live cells. Torchilin et al. reported that TAT peptides attached liposomes of 200 nm diameters can be directly translocated into cell cytoplasm via energy-independent process in H9C2 cells and BT20 cells (Torchilin et al., 2001). The internalization of TAT-liposomes continued effectively under  $4^\circ\text{C}$  treatment, suggesting the translocation process seemed to be energy-independent. Moreover, the internalized process was not inhibited by sodium azide or IAA, which indicated that there was no involvement of oxidative respiration or cytoskeleton. Moreover, one study employed reconstituted high density lipoprotein to load cholesterol-siRNA (rHDL/Chol-siRNA complex), providing an effective approach to directly transfer Chol-siRNA into the cytoplasm via scavenger receptor BI-mediated non-endocytotic mechanism (Ding et al., 2014). The cellular uptake of Chol-siRNA in SR-BI high (MCF-7) and low-expressing (HT1080) cell line suggested that the delivery of Chol-siRNA in rHDL was mediated by scavenger receptor BI. Co-localization of stained lysosomes and FAM-Chol-siRNA showed that FAM-Chol-siRNA appeared as a direct cytosolic delivery with endocytosis-independent process. Meanwhile, the observation of Cy5.5-rHDL/FAM-Chol-siRNA internalization indicated that the uptake process did not only arise from bringing the SR-BI-docked rHDL/Chol-siRNA complex close to the plasma membrane, but it would involve permitting the removal of Chol-siRNA from the complex and selective absorption into cytosol.

As far as is known, many factors are involved in the selection of uptake pathway in endocytosis, such as particle size and shape, charge density, cell types, and even culture condition (Alexis et al., 2008; Jiang et al., 2008; Xiang et al., 2012). Also, these factors influence the uptake pathways for nanoparticle-mediated non-endocytosis. However, in some cases, NPs with different size distribution, surface charge, and composition seem to be all capable of directly penetrating cells following the same mode. For instance, the investigation of polystyrene microspheres with differing diameters of 200 nm, 500 nm, and  $2\ \mu\text{m}$  indicated that the direct penetration of three NPs was energy-independent process via a rapid non-endocytic pathway. While the volume of formed endocytic vesicle after engulfment in endocytosis usually limits the size distribution of transporting carriers in specific endocytic pathway, typically a diameter of 120 nm for clathrin pit and a diameter of 60–80 nm for caveolae. Further, neutral LDH-nanosheet conjugates, consisting of negatively charged biomolecules and positively charged layered double hydroxide lactate nanosheets with a 0.5–2 nm thickness and a 30–60 nm diameter, also exhibited direct penetration following an energy-independent non-endocytic pathway. Nevertheless, to fully explore the nanoparticle-mediated

non-endocytosis, there is actually a lack of comprehensive study to characterize the uptake pathways in some studies which roughly confirm the appearance of non-endocytic uptake to exclude the endocytosis. Thus, it is strongly recommended that more quantitative analysis should be employed to carefully examine and validate the process of non-endocytic pathway, avoiding the disturbance of artifacts arising from endocytosis (Skotland et al., 2015).

### Methods used to study non-endocytic uptake

Currently there is no well-established general methodology on how non-endocytic uptake of transporting carriers should be studied. The adoption of different methods to exclude presently known endocytic pathways serves as primary way to characterize non-endocytic uptake pathways. Exclusion studies can be performed using pharmacological inhibitors, molecular probes, and organelle specific dyes.

Pharmacological inhibitors are the effective tools to block specific endocytic pathway in order to determine whether it plays an important role in the uptake of transporting carriers. However, none of the commonly used inhibitors of endocytosis is absolutely specific. Besides their cell type-dependent manner, they can either affect the actin cytoskeleton with side effects or interfere with alternative endocytic pathways simultaneously.

To distinguish phagocytic and macropinocytic pathways with non-endocytic uptake pathways, some pharmacological inhibitors are utilized in mechanism studies, including inhibitor of sodium-proton exchange 'amiloride', F-actin depolymerizing drug 'cytochalasin D', and inhibitor of phosphoinositide metabolism 'wortmannin'. The specificity of all these inhibitors is still in doubt as depolymerizing F-actin and inhibition of phosphoinositide metabolism may also disrupt other endocytic pathways. For example, cytochalasin D is also applied as inhibitor in the study of CvME (Parton et al., 1994). Methods such as incubation of cells with hypertonic sucrose and inhibitor 'chlorpromazine' were used to block clathrin-dependent endocytosis and to demonstrate the existence of different uptake mechanisms. However, the co-incubation with hypertonic sucrose is unspecific method with side-effects on cellular physiology. For instance, high sucrose can also affect other types of endocytosis than clathrin-mediated, since the fluid phase uptake can be completely blocked in fibroblasts (Heuser & Anderson, 1989). As to caveolae-mediated endocytic pathway, the commonly used inhibitors are methyl- $\beta$ -cyclodextrin (M $\beta$ CD), filipin, nystatin, and genestein. M $\beta$ CD causes acute cholesterol depletion to block caveolae-dependent endocytosis. However, cholesterol is not only important for the caveolae-mediated uptake, but also for other mechanism such as macropinocytosis and clathrin-dependent uptake (Van Kerkhof et al., 2001; Grimmer et al., 2002). Furthermore, the most direct way to distinguish endocytic pathways and non-endocytic pathways is the utilization of inhibitor or method for energy depletion, because most endocytic uptake is energy-dependent active transport process. Sodium azide (an ATPase inhibitor) and low temperature (4°C) are commonly

used inhibitor and method. In some conditions, low temperature and ATPase inhibitor should be used together because some of the non-endocytic pathways are also sensitive to low temperature (Pan et al., 2016).

Except for pharmacological inhibitors, molecular probes are also important tools for the studies in non-endocytic uptake pathways. Transferrin is often used as a probe of clathrin-mediated endocytosis in many studies (Alexander et al., 2010; Pan et al., 2016). Transferrin receptor mediates transferrin uptake via clathrin-mediated endocytosis, so that it can be used as specific marker and detected by anti-transferrin receptor. The organelle specific dyes are other ideal tools for the detection of co-localization. LysoTracker is the widely used dye for lysosomes. Combined with confocal imaging technology, the co-localization of labeled transporting carriers, and intracellular compartments can be observed visually. Measuring the co-localization with specific organelle dyes can be very helpful, but it should be kept in mind that apparent co-localization may be obtained from structures in close proximity without real co-localization in the same organelle. Moreover, false co-localization can easily be obtained if one fluorescent marker displays large patches or continuous areas of fluorescence which inevitably will overlap with fluorescent spots of other markers (Iversen et al., 2011).

### Conclusions and perspectives

In recent years, the field of endocytosis has undergone enormous growth with the realization that these internalization pathways play important roles in the regulation of extracellular nutrients uptake, membrane dynamics, and recycling cellular components. Meanwhile, a number of drug delivery systems have been proved to enter cells via endocytosis, albeit they typically suffer the harsh environment of endosomes and lysosomes during intracellular trafficking. In some cases, the delivered therapeutic agents can keep their pharmacological activities after endocytosis processes, however, many macromolecular drugs such as polypeptides, proteins, and nucleic acids are susceptible to enzymatic degradation and lose their activities after entrapment in endosomes and lysosomes. Thus, it is highly desirable to develop alternative delivery methods that bypass the endocytic pathways. Here, CPPs, pHLPs, and some NPs are reviewed to exhibit their abilities to directly transport the cargoes into cytoplasm via non-endocytic pathways (Table 1). Based on pH-dependent membrane-associated folding, pHLPs can fold and insert across cell membranes to deliver C-terminus linked cargo molecules into cytosol at low pH value. Also, different length and sequence of CPPs conjugated with small molecules, protein, and siRNA can enter into cytoplasm in the manner of direct translocation in different cell lines. In addition, some NPs with distinct diameter, composition, and surface properties could be internalized into cell via energy-independent non-endocytic pathways rather than endocytosis.

Although recent studies bring strong data for the existence of direct translocation for CPPs, the mechanisms underlying the non-endocytic uptake of CPPs remain far from



**Table 1.** Transporting carriers mediated non-endocytic uptake.

Transporting carrier	Cargo	Uptake mechanism	Cell line	Ref.
GLPKRRRRRRRR	FITC	Direct translocation	MCF-7, MDA-MB-231	Ma et al. (2011)
R8: RRRRRRRR	Alexa Fluor 488	Direct translocation	KG1a	Fretz et al. (2007)
NrTP: YKQCHKKGGKGGK -SG	Rhodamine B	Direct translocation	Lymphocyte, monocyte	Rodrigues et al. (2013)
Tat: G4-RKKRRQRRPPQ, R9: G4-RRRRRRRRR	Biotin	Direct translocation	CHO-K1, CHO-pgsA-745	Jiao et al. (2009)
Stearylation-HHHKKKVVVV-VV	siRNA	Direct translocation	A549, CHO-K1	Pan et al. (2016)
pHLIPs: AAQNPIYWARYA-DWLFPTPLLLLDLALLVDA-DEGTCG	Peptide nucleic acid (PNA), Ph-TRITC	Trans-membrane insertion	HeLa, CRL-2730, CRL-2116	Reshetnyak et al. (2006)
	Phalloidin	Trans-membrane insertion	HeLa, JC, M4A4	An et al. (2010)
	NC(Ser) <sub>4</sub> , NC(Asp) <sub>4</sub>	Trans-membrane insertion	HeLa	Thevenin et al. (2009)
	PNA anti-miRNAs	Trans-membrane insertion	A549	Cheng et al. (2015)
Gold nanoparticles	BODIPY dye	Unclear	DC2.4	Verma et al. (2008)
LDH-lactate nanosheets	ssDNA	Unclear	BY-2	Bao et al. (2016)
Polystyrene microspheres	Cy5	Unclear	HeLa, K625	Alexander et al. (2010)
Liposomes	PI, DOX	Membrane fusion	HeLa, CHO, 3T3	Yang et al. (2016)
High density lipoprotein nanoparticles	Chol-siRNA	SR-BI mediated non-endocytosis	MCF-7	Ding et al. (2014)

being fully understood. To date, several hypotheses have been proposed to explain direct translocation of CPPs across the lipid bilayer, including inverted micelle formation, pore formation, adaptive translocation, the carpet-like model, and the membrane thinning model. The model of inverted micelle formation was first proposed to explain the direct translocation of penetratin. Molecular dynamic simulation and<sup>31</sup> P-NMR experiments emphasize the importance of tryptophan residues and hydrogen bonding between the guanidinium headgroups and phosphate groups. Pore formation model was evoked to illustrate the passive diffusion of Tat and arginine-rich peptides across the plasma membrane with molecular dynamic simulations and electrophysiology experiments. Studies with other CPPs also suggested the formation of transient pores as a mechanism of direct translocation. While these models provide reasonable explanation of molecular mechanism for direct translocation of CPPs, the exact mechanisms of non-endocytic uptake is still indecisive. In addition, due to their cationic nature, the potential toxicity of CPPs to cells or tissues needs to be comprehensively investigated *in vitro* and *in vivo* if they are to be utilized as drug delivery systems. The *in vitro* toxicity of CPPs has been detected frequently, but *in vivo* evaluations are limited currently. Generally, toxicity of CPPs mainly bases on two patterns: toxic effect on lipid membrane of cells and organelles, and specific interaction with cell ingredients (Ziegler, 2008). Exposure time, length, and concentration of CPPs, attached cargoes and cell types can influence their toxicity (El-Andaloussi et al., 2007).

Inspired by the SNARE protein complex, an artificial membrane fusion system composed of a complementary pair of lipidated coiled-coil peptides was developed, enabling targeted liposome-cell membrane fusion. The endocytic pathways are almost completely circumvented, and the major site of cargo release is at the plasma membrane. Additionally, the rHDL/Chol-siRNA NPs were prepared to provide a highly effective approach to directly transport Chol-siRNA into cytoplasm via the SR-BI mediated non-endocytic mechanism. The recognition of apoA-I by SR-BI would result in formation of a non-aqueous 'channel' and subsequent cross-membrane transfer of Chol-siRNA cargo from rHDL to cytosolic

compartments without internalization of the intact rHDL/Chol-siRNA complexes. Yet, the mechanism for direct penetration of NPs is still unclear. There have no models or hypotheses were proposed to explain this energy-independent non-endocytic pathway.

Molecular and functional dissection of non-endocytic mechanisms is vital for rational design of highly potential drug delivery systems to directly transport cargoes into cytoplasm. The investigations are now underway regarding what are the structural bases of transporting carriers for non-endocytic uptake, how do they interact with the cellular components to drive their way across the membrane, and whether certain non-endocytic pathway is found only in specialized cell type. Furthermore, another big question in this field is how the non-endocytic pathways are regulated with other internalization processes such as endocytosis. Endocytosis is highly active process existing in all cell types. Several endocytic pathways are rather unspecific, therefore, it is highly unlikely that any transporting carrier would enter cell exclusively via non-endocytic pathways. What is the balance between endocytic/non-endocytic pathways? Which factors would affect this balance? Addressing these important issues is the major challenge for future studies.

## Disclosure statement

The authors have no other relevant affiliations or financial involvement with any organization or entity with a financial interest in or financial conflict with the subject matter or materials discussed in the manuscript apart from those disclosed.

## Funding

This work was supported by Science Fund for Creative Research Groups of the National Natural Science Foundation of China under Grant No.81121002; National Science and Technology Major Project under Grant No.2012ZX10002004.

## References

Aderem A, Underhill DM. (1999). Mechanisms of phagocytosis in macrophages. *Annu Rev Immunol* 17:593–623.

- Alexander LM, Pernagallo S, Livigni A, et al. (2010). Investigation of microsphere-mediated cellular delivery by chemical, microscopic and gene expression analysis. *Mol Biosyst* 6:399–409.
- Alexis F, Pridgen E, Molnar LK, Farokhzad OC. (2008). Factors affecting the clearance and biodistribution of polymeric nanoparticles. *Mol Pharm* 5:505–15.
- Alves ID, Goasdoue N, Correia I, et al. (2008). Membrane interaction and perturbation mechanisms induced by two cationic cell penetrating peptides with distinct charge distribution. *Biochim Biophys Acta* 1780:948–59.
- An M, Wijesinghe D, Andreev OA, et al. (2010). pH-(low)-insertion-peptide (pHLIP) translocation of membrane impermeable phalloidin toxin inhibits cancer cell proliferation. *Proc Natl Acad Sci USA* 107:20246–50.
- Andreev OA, Engelman DM, Reshetnyak YK. (2009). Targeting acidic diseased tissue: new technology based on use of the pH (Low) insertion peptide (pHLIP). *Chim Oggi* 27:34–7.
- Bao WL, Wang JY, Wang Q, et al. (2016). Layered double hydroxide nanoparticle for molecule delivery to intact plant cells. *Sci Rep* 6:26738.
- Bechara C, Sagan S. (2013). Cell-penetrating peptides: 20 years later, where do we stand? *FEBS Lett* 587:1693–702.
- Bolhassani A. (2011). Potential efficacy of cell-penetrating peptides for nucleic acid and drug delivery in cancer. *Biochim Biophys Acta* 1816:232–46.
- Bossi E, Zanella D, Gornati R, Bernardini G. (2016). Cobalt oxide nanoparticles can enter inside the cells by crossing plasma membranes. *Sci Rep* 6:22254.
- Champion JA, Mitragotri S. (2006). Role of target geometry in phagocytosis. *Proc Natl Acad Sci USA* 103:4930–4.
- Cheng CJ, Bahal R, Babar IA, et al. (2015). MicroRNA silencing for cancer therapy targeted to the tumour microenvironment. *Nature* 518:107–10.
- D'hondt K, Heese-Peck A, Riezman H. (2000). Protein and lipid requirements for endocytosis. *Annu Rev Genet* 34:255–95.
- Derossi D, Calvet S, Trembleau A, et al. (1996). Cell internalization of the third helix of the antennapedia homeodomain is receptor-independent. *J Biol Chem* 271:18188–93.
- Derossi D, Chassaing G, Prochiantz A. (1998). Trojan peptides: the penetratin system for intracellular delivery. *Trends Cell Biol* 8:84–7.
- Derossi D, Joliot AH, Chassaing G, Prochiantz A. (1994). The third helix of the Antennapedia homeodomain translocates through biological membranes. *J Biol Chem* 269:10444–50.
- Deshayes S, Plenat T, Charner P, et al. (2006). Formation of transmembrane ionic channels of primary amphipathic cell-penetrating peptides. Consequences on the mechanism of cell penetration. *Biochim Biophys Acta* 1758:1846–51.
- Ding Y, Wang YZ, Zhou JP, et al. (2014). Direct cytosolic siRNA delivery by reconstituted high density lipoprotein for target-specific therapy of tumor angiogenesis. *Biomaterials* 35:7214–27.
- Doherty GJ, McMahon HT. (2009). Mechanisms of endocytosis. *Annu Rev Biochem* 78:857–902.
- Dreaden EC, Alkilany AM, Huang X, et al. (2012). The golden age: gold nanoparticles for biomedicine. *Chem Soc Rev* 41:2740–79.
- El-Andaloussi S, Jarver P, Johansson HJ, Langel U. (2007). Cargo-dependent cytotoxicity and delivery efficacy of cell-penetrating peptides: a comparative study. *Biochem J* 407:285–92.
- Ernsting MJ, Murakami M, Roy A, Li SD. (2013). Factors controlling the pharmacokinetics, biodistribution and intratumoral penetration of nanoparticles. *J Control Release* 172:782–94.
- Fretz MM, Penning NA, Al-Taei S, et al. (2007). Temperature- and cholesterol-dependent translocation of L- and D-octa-arginine across the plasma and nuclear membrane of CD34+ leukaemia cells. *Biochem J* 403:335–42.
- Gandhi NS, Tekade RK, Chougule MB. (2014). Nanocarrier mediated delivery of siRNA/miRNA in combination with chemotherapeutic agents for cancer therapy: current progress and advances. *J Control Release* 194:238–56.
- Giljohann DA, Mirkin CA. (2009). Drivers of biodiagnostic development. *Nature* 462:461–4.
- Gratton SEA, Ropp PA, Pohlhaus PD, et al. (2008). The effect of particle design on cellular internalization pathways. *Proc Natl Acad Sci U S A* 105:11613–8.
- Green M, Ishino M, Loewenstein PM. (1989). Mutational analysis of HIV-1 Tat minimal domain peptides-identification of trans-dominant mutants that suppress HIV-LTR-driven gene-expression. *Cell* 58:215–23.
- Grimmer S, Van Deurs B, Sandvig K. (2002). Membrane ruffling and macropinocytosis in A431 cells require cholesterol. *J Cell Sci* 115:2953–62.
- Gupta B, Levchenko TS, Torchilin VP. (2005). Intracellular delivery of large molecules and small particles by cell-penetrating proteins and peptides. *Adv Drug Deliv Rev* 57:637–51.
- Harush-Frenkel O, Altschuler Y, Benita S. (2008). Nanoparticle-cell interactions: drug delivery implications. *Crit Rev Ther Drug Carrier Syst* 25:485–544.
- Hayer A, Stoeber M, Ritz D, et al. (2010). Caveolin-1 is ubiquitinated and targeted to intraluminal vesicles in endolysosomes for degradation. *J Cell Biol* 191:615–29.
- Herce HD, Garcia AE. (2007). Molecular dynamics simulations suggest a mechanism for translocation of the HIV-1 TAT peptide across lipid membranes. *Proc Natl Acad Sci USA* 104:20805–10.
- Herce HD, Garcia AE, Litt J, et al. (2009). Arginine-rich peptides destabilize the plasma membrane, consistent with a pore formation translocation mechanism of cell-penetrating peptides. *Biophysical J* 97:1917–25.
- Heuser JE, Anderson RG. (1989). Hypertonic media inhibit receptor-mediated endocytosis by blocking clathrin-coated pit formation. *J Cell Biol* 108:389–400.
- Hewlett LJ, Prescott AR, Watts C. (1994). The coated pit and macropinocytotic pathways serve distinct endosome populations. *J Cell Biol* 124:689–703.
- Hillaireau H, Couvreur P. (2009). Nanocarriers' entry into the cell: relevance to drug delivery. *Cell Mol Life Sci* 66:2873–96.
- Hunt JF, Rath P, Rothschild KJ, Engelman DM. (1997). Spontaneous, pH-dependent membrane insertion of a transbilayer alpha-helix. *Biochem* 36:15177–92.
- Iversen T-G, Skotland T, Sandvig K. (2011). Endocytosis and intracellular transport of nanoparticles: present knowledge and need for future studies. *Nano Today* 6:176–85.
- Jahn R, Sudhof TC. (1999). Membrane fusion and exocytosis. *Annu Rev Biochem* 68:863–911.
- Jain RK, Stylianopoulos T. (2010). Delivering nanomedicine to solid tumors. *Nat Rev Clin Oncol* 7:653–64.
- Jiang W, Kim BYS, Rutka JT, Chan WCW. (2008). Nanoparticle-mediated cellular response is size-dependent. *Nature Nanotech* 3:145–50.
- Jiao CY, Delarocce D, Burlina F, et al. (2009). Translocation and endocytosis for cell-penetrating peptide internalization. *J Biol Chem* 284:33957–65.
- Joanne P, Galanth C, Goasdoue N, et al. (2009). Lipid reorganization induced by membrane-active peptides probed using differential scanning calorimetry. *Biochim Biophys Acta* 1788:1772–81.
- Kaihatsu K, Janowski BA, Corey DR. (2004). Recognition of chromosomal DNA by PNAs. *Chem Biol* 11:749–58.
- Kaplan IM, Wadia JS, Dowdy SF. (2005). Cationic TAT peptide transduction domain enters cells by macropinocytosis. *J Control Release* 102:247–53.
- Karabadzha AG, Weerakkody D, Wijesinghe D, et al. (2012). Modulation of the pHLIP transmembrane helix insertion pathway. *Biophys J* 102:1846–55.
- Kawamoto S, Takasu M, Miyakawa T, et al. (2011). Inverted micelle formation of cell-penetrating peptide studied by coarse-grained simulation: importance of attractive force between cell-penetrating peptides and lipid head group. *J Chem Phys* 134:095103.
- Kerr MC, Teasdale RD. (2009). Defining macropinocytosis. *Traffic* 10:364–71.
- Kiss AL, Botos E. (2009). Endocytosis via caveolae: alternative pathway with distinct cellular compartments to avoid lysosomal degradation? *J Cell Mol Med* 13:1228–37.
- Kratz F, Warnecke A. (2012). Finding the optimal balance: challenges of improving conventional cancer chemotherapy using suitable

- combinations with nano-sized drug delivery systems. *J Control Release* 164:221–35.
- Kumari S, Swetha MG, Mayor S. (2010). Endocytosis unplugged: multiple ways to enter the cell. *Cell Res* 20:256–75.
- Lee MT, Hung WC, Chen FY, Huang HW. (2005). Many-body effect of antimicrobial peptides: on the correlation between lipid's spontaneous curvature and pore formation. *Biophys J* 89:4006–16.
- Luzio JP, Parkinson MDJ, Gray SR, Bright NA. (2009). The delivery of endocytosed cargo to lysosomes. *Biochim Soc Trans* 37:1019–21.
- Ma DX, Shi NQ, Qi XR. (2011). Distinct transduction modes of arginine-rich cell-penetrating peptides for cargo delivery into tumor cells. *Int J Pharm* 419:200–8.
- Mailander V, Landfester K. (2009). Interaction of nanoparticles with cells. *Biomacromolecules* 10:2379–400.
- Matsuzaki K, Yoneyama S, Murase O, Miyajima K. (1996). Transbilayer transport of ions and lipids coupled with mastoparan X translocation. *Biochem* 35:8450–6.
- Mellman I. (1996). Endocytosis and molecular sorting. *Annu Rev Cell Dev Biol* 12:575–625.
- Mellman I, Fuchs R, Helenius A. (1986). Acidification of the endocytic and exocytic pathways. *Annu Rev Biochem* 55:663–700.
- Mercer J, Helenius A. (2009). Virus entry by macropinocytosis. *Nat Cell Biol* 11:510–20.
- Milletti F. (2012). Cell-penetrating peptides: classes, origin, and current landscape. *Drug Discov Today* 17:850–60.
- Mu QS, Hondow NS, Krzeminski L, et al. (2012). Mechanism of cellular uptake of genotoxic silica nanoparticles. *Part Fibre Toxicol* 9:29.
- Musial-Siwiek M, Karabadzak A, Andreev OA, et al. (2010). Tuning the insertion properties of pHLP. *Biochim Biophys Acta* 1798:1041–6.
- Nichols B. (2003). Caveosomes and endocytosis of lipid rafts. *J Cell Sci* 116:4707–14.
- Nielsen PE, Egholm M, Berg RH, Buchardt O. (1991). Sequence-selective recognition of DNA by strand displacement with a thymine-substituted polyamide. *Science* 254:1497–500.
- Pan R, Xu W, Ding Y, et al. (2016). Uptake mechanism and direct translocation of a new CPP for siRNA delivery. *Mol Pharm* 13:1366–74.
- Parton RG, Del Pozo MA. (2013). Caveolae as plasma membrane sensors, protectors and organizers. *Nat Rev Mol Cell Biol* 14:98–112.
- Parton RG, Howes MT. (2010). Revisiting caveolin trafficking: the end of the caveosome. *J Cell Biol* 191:439–41.
- Parton RG, Joggerst B, Simons K. (1994). Regulated internalization of caveolae. *J Cell Biol* 127:1199–215.
- Pouny Y, Rapaport D, Mor A, et al. (1992). Interaction of antimicrobial dermaseptin and its fluorescently labeled analogs with phospholipid-membranes. *Biochem* 31:12416–23.
- Prestegard JH, O'Brien MP. (1987). Membrane and vesicle fusion. *Annu Rev Phys Chem* 38:383–411.
- Ray A, Norden B. (2000). Peptide nucleic acid (PNA): its medical and biotechnical applications and promise for the future. *FASEB J* 14:1041–60.
- Reshetnyak YK, Andreev OA, Lehnert U, Engelman DM. (2006). Translocation of molecules into cells by pH-dependent insertion of a transmembrane helix. *Proc Natl Acad Sci USA* 103:6460–5.
- Reshetnyak YK, Segala M, Andreev OA, Engelman DM. (2007). A monomeric membrane peptide that lives in three worlds: in solution, attached to, and inserted across lipid bilayers. *Biophys J* 93:2363–72.
- Riehemann K, Schneider SW, Luger TA, et al. (2009). Nanomedicine-challenge and perspectives. *Angew Chem Int Ed* 48:872–97.
- Rodrigues M, De La Torre BG, Andreu D, Santos NC. (2013). Kinetic uptake profiles of cell penetrating peptides in lymphocytes and monocytes. *Biochim Biophys Acta* 1830:4554–63.
- Rothbard JB, Jessop TC, Lewis RS, et al. (2004). Role of membrane potential and hydrogen bonding in the mechanism of translocation of guanidinium-rich peptides into cells. *J Am Chem Soc* 126:9506–7.
- Saalik P, Elmquist A, Hansen M, et al. (2004). Protein cargo delivery properties of cell-penetrating peptides. A comparative study. *Bioconjugate Chem* 15:1246–53.
- Sarkar K, Kruhlak MJ, Erlandsen SL, Shaw S. (2005). Selective inhibition by rottlerin of macropinocytosis in monocyte-derived dendritic cells. *Immunology* 116:513–24.
- Savic R, Eisenberg A, Maysinger D. (2006). Block copolymer micelles as delivery vehicles of hydrophobic drugs: micelle-cell interactions. *J Drug Target* 14:343–55.
- Shi NQ, Qi XR, Xiang B, Zhang Y. (2014). A survey on 'Trojan Horse' peptides: opportunities, issues and controlled entry to 'Troy'. *J Control Release* 194:53–70.
- Skotland T, Iversen T, Torgersen M, Sandvig K. (2015). Cell-penetrating peptides: possibilities and challenges for drug delivery *in vitro* and *in vivo*. *Molecules* 20:13313–23.
- Swanson JA. (2008). Shaping cups into phagosomes and macropinosomes. *Nat Rev Mol Cell Biol* 9:639–49.
- Thevenin D, An M, Engelman DM. (2009). pHLP-mediated translocation of membrane-impermeable molecules into cells. *Chem Biol* 16:754–62.
- Torchilin VP, Rammohan R, Weissig V, Levchenko TS. (2001). TAT peptide on the surface of liposomes affords their efficient intracellular delivery even at low temperature and in the presence of metabolic inhibitors. *Proc Natl Acad Sci USA* 98:8786–91.
- Underhill DM, Goodridge HS. (2012). Information processing during phagocytosis. *Nat Rev Immunol* 12:492–502.
- Van Kerkhof P, Sachse M, Klumperman J, Strous GJ. (2001). Growth hormone receptor ubiquitination coincides with recruitment to clathrin-coated membrane domains. *J Biol Chem* 276:3778–84.
- Verma A, Uzun O, Hu YH, et al. (2008). Surface-structure-regulated cell-membrane penetration by monolayer-protected nanoparticles. *Nat Mater* 7:588–95.
- Vives E, Brodin P, Lebleu B. (1997). A truncated HIV-1 Tat protein basic domain rapidly translocates through the plasma membrane and accumulates in the cell nucleus. *J Biol Chem* 272:16010–7.
- Wender PA, Gallihier WC, Goun EA, et al. (2008). The design of guanidinium-rich transporters and their internalization mechanisms. *Adv Drug Deliv Rev* 60:452–72.
- Wijesinghe D, Engelman DM, Andreev OA, Reshetnyak YK. (2011). Tuning a polar molecule for selective cytoplasmic delivery by a pH (Low) insertion peptide. *Biochemistry* 50:10215–22.
- Wu CH, Chen YP, Wu SH, et al. (2013). Enhanced non-endocytotic uptake of mesoporous silica nanoparticles by shortening the peptide transporter arginine side chain. *ACS Appl Mater Interfaces* 5:12244–8.
- Xiang SN, Tong HJ, Shi Q, et al. (2012). Uptake mechanisms of non-viral gene delivery. *J Control Release* 158:371–8.
- Yang J, Bahreman A, Daudey G, et al. (2016). Drug delivery via cell membrane fusion using lipopeptide modified liposomes. *ACS Cent Sci* 2:621–30.
- Zaro JL, Shen WC. (2003). Quantitative comparison of membrane transduction and endocytosis of oligopeptides. *Biochem Biophys Res Commun* 307:241–7.
- Zaro JL, Shen WC. (2005). Evidence that membrane transduction of oligoarginine does not require vesicle formation. *Exp Cell Res* 307:164–73.
- Zhang Y, Li L, Han M, et al. (2015). Amphiphilic lipopeptide-mediated transport of insulin and cell membrane penetration mechanism. *Molecules* 20:21569–83.
- Ziegler A. (2008). Thermodynamic studies and binding mechanisms of cell-penetrating peptides with lipids and glycosaminoglycans. *Adv Drug Deliv Rev* 60:580–97.