

LETTER TO THE EDITOR

Open Access



# Genetic alterations of m<sup>6</sup>A regulators predict poorer survival in acute myeloid leukemia

Chau-To Kwok<sup>1,2,3</sup>, Amy D. Marshall<sup>1,3</sup>, John E. J. Rasko<sup>1,3,4</sup> and Justin J. L. Wong<sup>1,2,3\*</sup>

## Abstract

Methylation of N<sup>6</sup> adenosine (m<sup>6</sup>A) is known to be important for diverse biological processes including gene expression control, translation of protein, and messenger RNA (mRNA) splicing. However, its role in the development of human cancers is poorly understood. By analyzing datasets from the Cancer Genome Atlas Research Network (TCGA) acute myeloid leukemia (AML) study, we discover that mutations and/or copy number variations of m<sup>6</sup>A regulatory genes are strongly associated with the presence of TP53 mutations in AML patients. Further, our analyses reveal that alterations in m<sup>6</sup>A regulatory genes confer a worse survival in AML. Our work indicates that genetic alterations of m<sup>6</sup>A regulatory genes may cooperate with TP53 and/or its regulator/downstream targets in the pathogenesis and/or maintenance of AML.

**Keywords:** RNA modification, m<sup>6</sup>A, Leukemia, Acute myeloid leukemia, TP53 mutation

## To the editor

Methylation of N<sup>6</sup> adenosine (m<sup>6</sup>A) is the most abundant form of messenger RNA (mRNA) modification in eukaryotes [1]. It is known to play crucial roles in the regulation of gene expression, protein translation, and splicing in normal biology [1, 2]. m<sup>6</sup>A regulatory enzymes consist of “writers” METTL3 and METTL14, “readers” YTHDF1 and YTHDF2, and “erasers” FTO and ALKBH5 [1]. m<sup>6</sup>A perturbation mediated via knock-down or knockout of these enzymes can cause cell death, decreased cell proliferation, impaired self-renewal capacity, and developmental defects [1]. For example, ablation of METTL3 perturbs embryonic stem cell differentiation [1]. Depletion of FTO and ALKBH5 leads to obesity and impairment of spermatogenesis, respectively [1]. Silencing of m<sup>6</sup>A methyltransferase can result in modulation of the TP53 signaling pathway of relevance to tumorigenesis [2]. More recently, overexpression of FTO has been shown to promote leukemogenesis [3]. It is therefore surprising that genetic alterations affecting m<sup>6</sup>A regulatory genes have not been explored in human

cancers, including leukemia. Hence, there is a compelling reason to determine whether mutations, deletions, and amplifications of m<sup>6</sup>A regulatory genes are enriched in leukemia subtypes. Clinicopathological associations including patient survival have not previously been reported.

Here, we curate mutations, including point mutations, deep deletions, and amplifications of the best characterized m<sup>6</sup>A regulatory genes, *METTL3*, *METTL14*, *YTHDF1*, *YTHDF2*, *FTO*, and *ALKBH5*. Deep deletions are possibly homozygous deletions as measured using the Genomic Identification of Significant Targets in Cancer algorithm (GISTIC). Four distinct types of hematological malignancies were sequenced by the Cancer Genome Atlas Research (TCGA) Network: acute myeloid leukemia (AML), multiple myeloma (MM), acute lymphoblastic leukemia (ALL), and chronic lymphocytic leukemia (CLL), and genetic data has been made available via cBioPortal [4]. Mutations of m<sup>6</sup>A regulatory genes were found in 2.6% (5/191) of AML, 2.4% (5/205) of MM, 1.0% (1/106) of ALL, and 0% (0/666) of CLL (Additional file 1: Figure S1a). For AML, we further identified variation in gene copy number in 10.5% (20/191) of patients (Additional file 2: Table S1). There was a comparable frequency of copy number loss measured as shallow deletion (possibly heterozygous

\* Correspondence: j.wong@centenary.org.au

<sup>1</sup>Gene & Stem Cell Therapy Program, Centenary Institute, University of Sydney, Camperdown 2050, Australia

<sup>2</sup>Gene Regulation in Cancer Laboratory, Centenary Institute, University of Sydney, Camperdown 2050, Australia

Full list of author information is available at the end of the article



deletion) using GISTIC ( $n = 19$ ) and copy number gain ( $n = 13$ ) of m<sup>6</sup>A regulatory genes (Additional file 1: Figure S1b). Among these, copy number loss of *ALKBH5* is the most frequent in this AML cohort (12/191, 6.3%). Notably, 4.7% (9/191) of AML patients had concomitant copy number gain or loss of more than one m<sup>6</sup>A regulatory gene (Additional file 2: Table S1). In four of these nine cases, a copy number gain of an m<sup>6</sup>A writer was detected concomitantly with a shallow/deep deletion of an m<sup>6</sup>A eraser (Additional file 2: Table S1), indicating a potential synergistic alteration of m<sup>6</sup>A regulatory enzymes that may lead to increased levels of RNA m<sup>6</sup>A modification. Shallow deletions of *METTL14*, *FTO*, and *ALLBH5* were significantly associated with reduced mRNA expression of these genes (Additional file 3: Figure S2). Copy number gain of *METTL14* was significantly associated with an increase in its expression (Additional file 3: Figure S2). Thus, shallow deletion and copy number gain may result in the reduced and increased expression of m<sup>6</sup>A regulatory genes, respectively.

We determined whether mutations and copy number variations (CNVs) of m<sup>6</sup>A regulatory genes are associated with clinicopathological and molecular features of AML. Mutations and/or CNVs of *METTL3*, *METTL14*, *YTHDF1*, *YTHDF2*, *FTO*, and *ALKBH5* as a group were significantly associated with poorer cytogenetic risk in AML ( $P < 0.0001$ , Table 1). Additionally, we observed a marked increase in *TP53* mutations ( $P < 0.0001$ , Table 1) but a significant lack of *NPM1* and *FLT3* mutations ( $P < 0.005$ , Table 1) in AML patients harboring genetic alterations of m<sup>6</sup>A regulatory genes. These clinicopathological and molecular features were also associated with CNVs of m<sup>6</sup>A regulatory genes alone (Table 1). However, they were not associated with mutations of m<sup>6</sup>A regulatory genes alone (Table 1), which may be due to the small number of cases with mutations ( $n = 5$ ).

We further determined whether shallow/deep deletion of *ALKBH5* is associated with the clinicopathological and molecular features. Consistent with our findings in m<sup>6</sup>A regulatory genes overall, shallow/deep deletion of *ALKBH5* was significantly associated with poorer cytogenetic risk and the presence of *TP53* mutation in this AML cohort ( $P < 0.0001$ , Additional file 4: Table S2). *NPM1* and *FLT3* mutations were absent in AML patients with shallow/deep deletion of *ALKBH5* (Additional file 4: Table S2).

We performed Kaplan-Meier analysis to investigate the impact of genetic alterations in m<sup>6</sup>A regulatory genes on overall (OS) and event-free survival (EFS) in patients with AML. As a group, patients with a mutation of any of the genes encoding m<sup>6</sup>A regulatory enzymes had a worse OS ( $P = 0.007$ ) and EFS ( $P < 0.0001$ , Fig. 1a). Inferior OS and EFS were also evident in patients who had mutations and/or CNVs of these genes (Fig. 1b) and in those with shallow/deep deletion of *ALKBH5* (Fig. 1c).

Of all clinicopathological and molecular features considered for this de novo AML cohort [5], older age (>60 years), white blood cell count > median (15,200 per mm<sup>3</sup>), unfavorable cytogenetic risk, and *DNMT3A* and *TP53* mutations were significantly associated with inferior OS and/or EFS in univariate analyses (Additional file 5: Figure S3 and Additional file 6: Figure S4). We therefore examined the impact of m<sup>6</sup>A regulatory gene mutations and/or CNVs on the outcome of AML patients with poor risk genotypes. Alterations of m<sup>6</sup>A regulatory genes as a group were associated with inferior OS and EFS in patients regardless of age (Additional file 7: Figure S5). These genetic alterations did not confer a worse OS or EFS in patients with unfavorable cytogenetic risk, white blood cell count > median, or *DNMT3A* mutations (Additional file 8: Figure S6).

We further determined the survival of AML patients based on whether they exhibited combined *TP53* mutations and genetic alterations of m<sup>6</sup>A regulatory genes. Almost all patients with mutated *TP53* (93.6%, Table 1) had  $\geq 1$  genetic alteration(s) of m<sup>6</sup>A regulatory gene(s). This group of patients had worse OS and EFS than patients who did not have any of these genetic alterations (Additional file 9: Figure S7a). There is a non-significant trend in patients with wild-type *TP53* in combination with genetic alterations of m<sup>6</sup>A regulatory genes to exhibit inferior EFS compared to patients without genetic alterations of these genes (Additional file 9: Figure S7a).

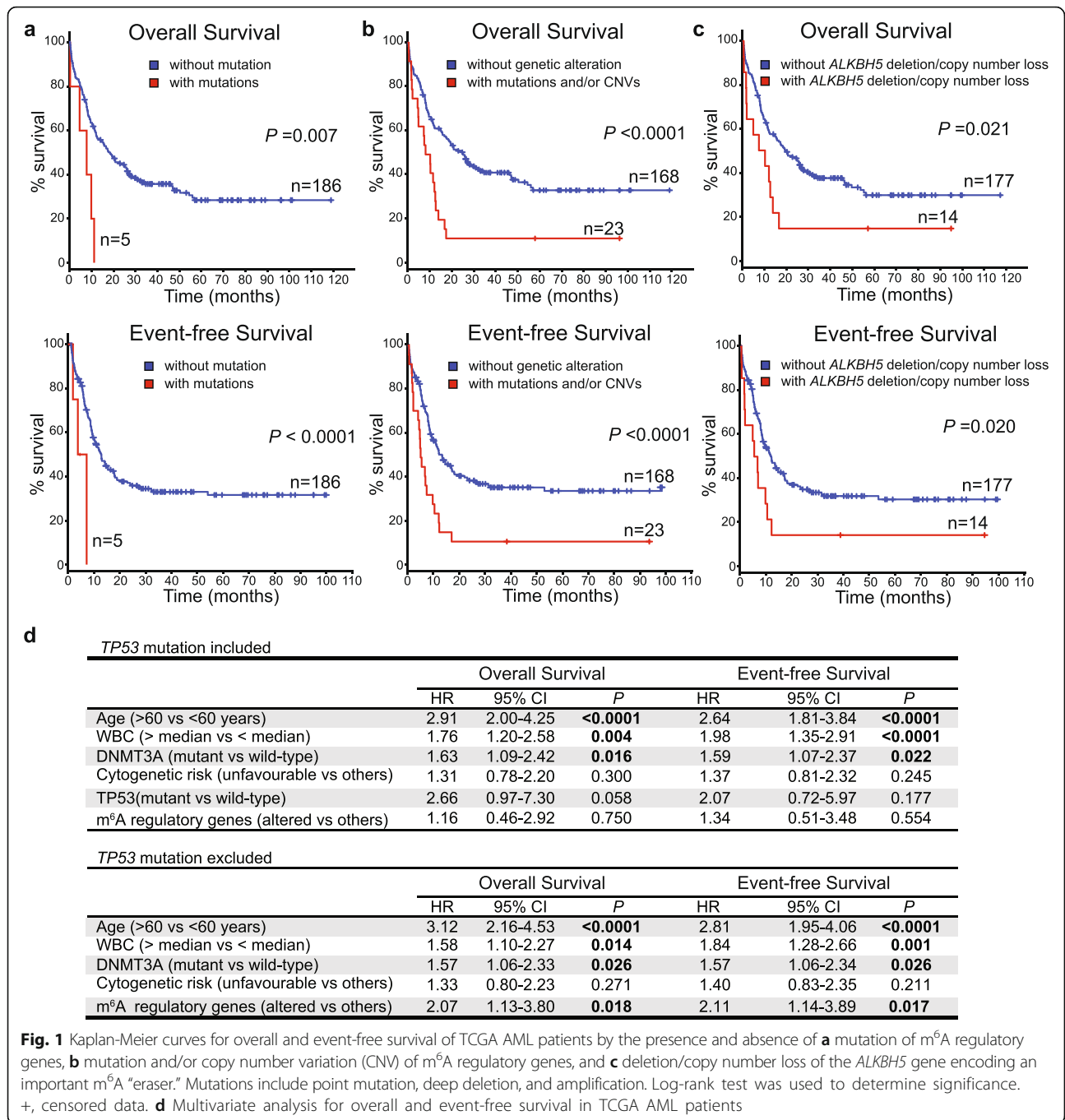
Because mutations, deletions, amplifications, and/or CNVs of m<sup>6</sup>A regulatory genes were relatively confined to patients with wild-type *FLT3* and *NPM1* (95.6%, Table 1), we determined whether these genetic alterations impact OS and EFS stratified by *FLT3* or *NPM1* mutation status. Inferior OS and EFS were observed in patients with wild-type *FLT3* who had  $\geq 1$  genetic alteration(s) of m<sup>6</sup>A regulatory gene(s) ( $P < 0.0001$ , Additional file 9: Figure S7b). Notably, these patients also had worse OS ( $P < 0.041$ ) and EFS ( $P < 0.042$ ) compared to patients who had mutant *FLT3* but no genetic alteration of m<sup>6</sup>A regulatory genes (Additional file 9: Figure S7b). Genetic alterations of m<sup>6</sup>A regulatory genes as a group were also significantly associated with a worse OS and EFS in patients with wild-type *NPM1* ( $P < 0.0001$ , Additional file 9: Figure S7c). Integration of molecular analyses of m<sup>6</sup>A regulatory genes may be useful to determine a poorer outcome in AML patients who have neither been classified as “poor risk” due to the presence of *FLT3* mutations [6, 7] nor better outcome conferred by *NPM1* mutations [8], particularly within a group of *TP53* wild-type patients.

In a multivariate Cox proportional hazard model that includes variables associated with poorer survival, genetic alterations of m<sup>6</sup>A regulatory genes as a group were not an independent prognostic factor for OS (Fig. 1d). However, genetic alterations of m<sup>6</sup>A regulatory genes

**Table 1** Clinical and molecular characteristics of TCGA AML patients according to the mutation and/or copy number variation status of genes encoding m<sup>6</sup>A regulatory enzymes

	Mutation and/or CNV		CNV only <sup>a</sup>		Mutation	
	Yes (n = 23)	No (n = 168)	Yes (n = 18)	No (n = 168)	Yes (n = 5)	No (n = 186)
			P	P	P	P
Age			0.083		0.193	
Median (range)	65 (18–81)	57 (21–88)	62.5 (18–81)	57 (21–88)	65 (45–76)	57.5 (18–88)
Sex, no. (%)			0.123		0.321	
Male	16 (8.4)	87 (45.5)	12 (6.5)	87 (46.8)	4 (2.1)	99 (51.8)
Female	7 (3.7)	81 (42.4)	6 (3.2)	81 (43.5)	1 (0.5)	87 (45.5)
BM blast			0.072		<b>0.038</b>	
Median % (range)	60 (30–97)	73 (30–100)	54 (30–97)	73 (30–100)	75 (33–90)	72 (30–100)
WBC, ×10 <sup>3</sup> /mm <sup>3</sup>			0.084		<b>0.047</b>	
Median (range)	5.4 (0.7–202.7)	17.5 (0.4–298.4)	5.2 (2.3–101.3)	17.45(0.4–298.4)	14.5 (2.3–101.3)	15.6 (0.4–298.4)
Cytogenetic risk, no. (%)			<b>&lt;0.0001</b>		<b>&lt;0.0001</b>	
Favorable	0 (0)	37 (19.4)	0 (0)	37 (19.9)	0 (0)	37 (19.4)
Intermediate	4 (2.1)	105 (55)	1 (0.5)	105 (56.5)	3 (1.6)	106 (55.5)
Unfavorable	19 (9.9)	21 (11)	17 (9.1)	21 (11.3)	2 (1)	38 (19.9)
Missing data	0 (0)	5 (2.6)	0 (0)	5 (2.6)	0 (0)	5 (2.6)
Mutation, no./total no. (%)						
<i>FLT3</i>	1/23 (4.3)	53/168 (31.5)	<b>0.005</b>	53/168 (31.5)	<b>0.002</b>	53/186 (28.4)
<i>NPM1</i>	1/23 (4.3)	51/168 (30)	<b>0.006</b>	51/168 (30.3)	<b>0.004</b>	51/186 (27.4)
<i>DNMT3A</i>	4/23 (17.4)	43/168 (25.6)	0.453	43/168 (25.6)	0.249	45/186 (24.2)
<i>IDH1</i> or <i>IDH2</i>	1/23 (4.3)	34/168 (20.2)	0.084	34/168 (20.2)	<b>0.048</b>	34/186 (18.3)
<i>NRAS</i> or <i>KRAS</i>	3/23 (13)	20/168 (11.9)	0.744	20/168 (11.9)	0.471	23/186 (12.4)
<i>RUNX1</i>	2/23 (8.7)	17/168 (10.1)	1.000	17/168 (10.1)	0.380	17/186 (9.1)
<i>TET2</i>	1/23 (4.3)	15/168 (8.9)	0.698	15/168 (8.9)	1.000	16/186 (8.6)
<i>TP53</i>	15/23 (65.2)	1/168 (0.6)	<b>&lt;0.0001</b>	1/168 (0.6)	<b>&lt;0.0001</b>	14/186 (7.5)
<i>CEBPA</i>	2/23 (8.7)	10/168 (6.0)	0.641	10/168 (6.0)	0.327	12/186 (6.5)
<i>WT1</i>	0/23 (0)	12/168 (7.1)	0.366	12/168 (7.1)	0.610	12/186 (6.5)
<i>PTPN11</i>	2/23 (8.7)	6/168 (3.6)	0.248	6/168 (3.6)	0.175	8/186 (4.3)
<i>KIT</i>	1/23 (4.3)	6/168 (3.6)	0.599	6/168 (3.6)	1.000	6/186 (3.2)

Significant P values are in bold  
 CNV copy number variation, BM bone marrow, WBC white blood cell  
<sup>a</sup>Excluding samples with m<sup>6</sup>A regulatory gene mutations



**Fig. 1** Kaplan-Meier curves for overall and event-free survival of TCGA AML patients by the presence and absence of **a** mutation of m<sup>6</sup>A regulatory genes, **b** mutation and/or copy number variation (CNV) of m<sup>6</sup>A regulatory genes, and **c** deletion/copy number loss of the *ALKBH5* gene encoding an important m<sup>6</sup>A “eraser.” Mutations include point mutation, deep deletion, and amplification. Log-rank test was used to determine significance. +, censored data. **d** Multivariate analysis for overall and event-free survival in TCGA AML patients

did independently predict poorer OS (hazard ratio = 2.073; 95% CI, 1.13–3.80;  $P = 0.018$ ) when *TP53* mutation was excluded from the model (Fig. 1d). Similar results were observed in multivariate analyses to predict EFS (Fig. 1d). Our results support a strong association between genetic alterations of m<sup>6</sup>A regulatory genes and *TP53* mutation. The fact that one is confounding the other in predicting patients’ outcome suggests that both may be complementary in the pathogenesis and/or maintenance of AML.

Identification of novel biomarkers and molecular targets to guide the development of anti-leukemic therapies remains a major challenge. Particularly for AML, the molecular markers to define subtypes and prognosis are under continuous refinement [7, 9]. Given that m<sup>6</sup>A modification to RNA has broad physiological functions, its impairment may be associated with the development and progression of diverse cancers, including leukemia. The current WHO classification highlights epigenetic modifiers as being mutated early during the clonal

evolution of AML [9]. Novel genetic subgroups now include mutation in genes that encode splicing regulators, TP53, and other epigenetic modifiers [9].

Our present study is the first to determine the clinicopathological associations and impact of genetic alterations affecting m<sup>6</sup>A regulatory genes in AML. We found a striking association between genetic alterations of these genes as a group and TP53 mutations (Table 1). Importantly, genetic alterations of m<sup>6</sup>A regulatory genes are associated with inferior outcome in AML patients, although this may be confounded by the adverse impact of TP53 mutations on survival [10] (Additional files 6: Figure S4 and 9: Figure S7). It has been established that loss of the m<sup>6</sup>A methyltransferase, *METTL3*, resulted in alternative splicing and gene expression changes of >20 genes involved in the TP53 signaling pathway including *MDM2*, *MDM4*, and *P21* in a human liver cancer cell line [2]. It is plausible that genetic alterations of m<sup>6</sup>A modifiers, TP53, and/or its regulator/downstream targets contribute in complementary pathways to the pathogenesis and/or maintenance of AML. Further studies in larger AML cohorts would assist in confirming our findings and spur future research into the functional role of m<sup>6</sup>A RNA modification in AML and its link to tumorigenesis pathways, especially TP53 signaling.

## Additional Files

**Additional file 1: Figure S1.** Point mutation, deep deletion, amplification, shallow deletion, and copy number gain of m<sup>6</sup>A regulatory genes in hematological malignancies. (a) Percentage of leukemia samples with alteration to the genes encoding m<sup>6</sup>A regulators based on the Cancer Genome Atlas Research Network (TCGA) data. (b) Frequency of copy number gain or loss of the m<sup>6</sup>A regulatory genes in the TCGA AML samples. AML, Acute Myeloid Leukemia; MM, Multiple Myeloma; ALL, Acute Lymphoblastic Leukemia; CLL, Chronic Lymphocytic Leukemia. (PDF 361 kb)

**Additional file 2: Table S1.** AML samples with a mutation, deep deletion, amplification, copy number gain, and/or copy number loss of one or more genes encoding m<sup>6</sup>A regulatory enzymes. \*Examples of potentially synergistic changes that may increase RNA m<sup>6</sup>A levels. (DOCX 103 kb)

**Additional file 3: Figure S2.** Associations between shallow deletion and copy number gain of m<sup>6</sup>A regulatory genes and their mRNA expression in the TCGA AML cohort. Relative mRNA expression is displayed as Z-score, which indicates the number of standard deviation away from the mean expression of the reference population represented by non-mutated diploid samples. Mann-Whitney *U* test was used to determine significance. (PDF 395 kb)

**Additional file 4: Table S2.** Clinical and molecular characteristics of TCGA AML patients with a deletion or copy number loss of the gene encoding an m<sup>6</sup>A eraser, *ALKBH5*. (DOCX 92 kb)

**Additional file 5: Figure S3.** Kaplan-Meier curves for overall and event-free survival of the TCGA AML patients by (a) age, (b) white blood cell (WBC) count at diagnosis, and (c) cytogenetic risk status. Log-rank test was used to determine significance. +, censored data. (PDF 482 kb)

**Additional file 6: Figure S4.** Kaplan-Meier curves for overall and event-free survival of the TCGA AML patients by (a) *DNMT3A* mutation status and (b) TP53 mutation status. Log-rank test was used to determine significance. +, censored data. (PDF 424 kb)

**Additional file 7: Figure S5.** Kaplan-Meier curves for overall and event-free survival of patients with and without mutation and/or copy number variation (CNV) of m<sup>6</sup>A regulatory genes by (a) age >60 years and (b) age <60 years. Log-rank test was used to determine significance. +, censored data. (PDF 405 kb)

**Additional file 8: Figure S6.** Kaplan-Meier curves for overall and event-free survival of patients with and without mutation and/or copy number variation (CNV) of m<sup>6</sup>A regulatory genes by (A) unfavorable cytogenetic risk group, (B) white blood cell count (WBC) > median at diagnosis, and (C) mutated *DNMT3A*. Log-rank test was used to determine significance. +, censored data. (PDF 442 kb)

**Additional file 9: Figure S7.** Kaplan-Meier curves for overall and event-free survival of patients stratified by the status of m<sup>6</sup>A regulatory gene alterations in addition to (a) TP53, (b) FLT3, and (c) NPM1 mutation status. Log-rank test was used to determine significance. WT, wild-type. +, censored data. (PDF 501 kb)

**Additional file 10:** Supplementary methods. (DOCX 79 kb)

## Abbreviations

ALL: Acute lymphoblastic leukemia; AML: Acute myeloid leukemia; CLL: Chronic lymphocytic leukemia; CNVs: Copy number variations; EFS: Event-free survival; m<sup>6</sup>A: Methylation of N<sup>6</sup> adenosine; MM: Multiple myeloma; OS: Overall survival; TCGA: The Cancer Genome Atlas Research Network

## Acknowledgements

We acknowledge the Cancer Genome Atlas Research Network for the clinicopathological and genetic alteration data.

## Funding

JEJR and JLLW received funding from the National Health and Medical Research Council of Australia (Grant No. 1061906 to JEJR, No. 1080530 and No. 1128175 to JEJR and JLLW, and No. 1126306 to JLLW). JEJR is funded by the Cancer Council of NSW, Cure the Future, and an anonymous foundation. JLLW holds a Fellowship from the Cancer Institute of NSW.

## Availability of data and materials

Data have previously been deposited by others and are available via the cBioportal and the TCGA data portal. The inclusion criteria for patients can be found in Additional file 10.

## Authors' contributions

JLLW conceived the project. JLLW, CTK, and ADM analyzed the data. JLLW and JEJR contributed towards the interpretation of the data. All authors wrote and approved the final manuscript.

## Competing interests

The authors declare that they have no competing interests.

## Consent for publication

Informed consent has been obtained from all patients as reported in a previous publication.

## Ethics approval and consent to participate

With informed consent, patients were enrolled in an institutional tissue banking protocol that was approved by the Washington University Human Studies Committee (WU HSC No. 01-1014) as previously published by others.

## Author details

<sup>1</sup>Gene & Stem Cell Therapy Program, Centenary Institute, University of Sydney, Camperdown 2050, Australia. <sup>2</sup>Gene Regulation in Cancer Laboratory, Centenary Institute, University of Sydney, Camperdown 2050, Australia. <sup>3</sup>Sydney Medical School, University of Sydney, Camperdown, NSW 2006, Australia. <sup>4</sup>Cell and Molecular Therapies, Royal Prince Alfred Hospital, Camperdown 2050, Australia.

Received: 14 December 2016 Accepted: 27 January 2017

Published online: 02 February 2017



## References

1. Liu N, Pan T. N6-methyladenosine-encoded epitranscriptomics. *Nat Struct Mol Biol.* 2016;23:98–102.
2. Dominissini D, Moshitch-Moshkovitz S, Schwartz S, Salmon-Divon M, Ungar L, Osenberg S, Cesarkas K, Jacob-Hirsch J, Amariglio N, Kupiec M, Sorek R, Rechavi G. Topology of the human and mouse m6A RNA methylomes revealed by m6A-seq. *Nature.* 2012;485:201–6.
3. Li Z, Weng H, Su R, Weng X, Zuo Z, Li C, Huang H, Nachtergaele S, Dong L, Hu C, Qin X, Tang L, Wang Y, Hong G-M, Huang H, Wang X, Chen P, Gurbuxani S, Arnovitz S, Li Y, Li S, Strong J, Neilly MB, Larson RA, Jiang X, Zhang P, Jin J, He C, Chen J. FTO plays an oncogenic role in acute myeloid leukemia as a N6-methyladenosine RNA demethylase. *Cancer Cell.* 2017;31:127–41.
4. Cerami E, Gao J, Dogrusoz U, Gross BE, Sumer SO, Aksoy BA, Jacobsen A, Byrne CJ, Heuer ML, Larsson E, Antipin Y, Reva B, Goldberg AP, Sander C, Schultz N. The cBio cancer genomics portal: an open platform for exploring multidimensional cancer genomics data. *Cancer Discov.* 2012;2:401–4.
5. The Cancer Genome Atlas Research Network. Genomic and epigenomic landscapes of adult de novo acute myeloid leukemia. *New Engl J Med.* 2013;368:2059–74.
6. Levis M. FLT3 mutations in acute myeloid leukemia: what is the best approach in 2013? *Hematology Am Soc Hematol Educ Program.* 2013;2013:220–6.
7. Meyer SC, Levine RL. Translational implications of somatic genomics in acute myeloid leukaemia. *Lancet Oncol.* 2014;15:e382–94.
8. Liu Y, He P, Liu F, Shi L, Zhu H, Zhao J, Wang Y, Chen X, Zhang M. Prognostic significance of NPM1 mutations in acute myeloid leukemia: a meta-analysis. *Mol Clin Oncol.* 2014;2:275–81.
9. Papaemmanuil E, Gerstung M, Bullinger L, Gaidzik VI, Paschka P, Roberts ND, Potter NE, Heuser M, Thol F, Bolli N, Gundem G, Van Loo P, Martincorena I, Ganly P, Mudie L, McLaren S, O'Meara S, Raine K, Jones DR, Teague JW, Butler AP, Greaves MF, Ganser A, Döhner K, Schlenk RF, Döhner H, Campbell PJ. Genomic classification and prognosis in acute myeloid leukemia. *New Engl J Med.* 2016;374:2209–21.
10. Hou HA, Chou WC, Kuo YY, Liu CY, Lin LI, Tseng MH, Chiang YC, Liu MC, Liu CW, Tang JL, Yao M, Li CC, Huang SY, Ko BS, Hsu SC, Chen CY, Lin CT, Wu SJ, Tsay W, Chen YC, Tien HF. TP53 mutations in de novo acute myeloid leukemia patients: longitudinal follow-ups show the mutation is stable during disease evolution. *Blood Cancer J.* 2015;5:e331.

Submit your next manuscript to BioMed Central and we will help you at every step:

- We accept pre-submission inquiries
- Our selector tool helps you to find the most relevant journal
- We provide round the clock customer support
- Convenient online submission
- Thorough peer review
- Inclusion in PubMed and all major indexing services
- Maximum visibility for your research

Submit your manuscript at  
[www.biomedcentral.com/submit](http://www.biomedcentral.com/submit)

