

CASE REPORT

Open Access



Identification of a familial complex chromosomal rearrangement by optical genome mapping

Yang Yang¹ and Wang Hao^{1,2*}

Abstract

Background: Complex chromosomal rearrangements (CCRs) are rare chromosomal structural variations, containing a variety of rearrangements such as translocation, inversion and/or insertion. With the development of cytogenetic and molecular genetic techniques, some chromosomal rearrangements that were initially considered to be simple reciprocal translocations in the past might eventually involve more complex chromosomal rearrangements.

Case presentation: In this case, a pregnant woman, who had a spontaneous abortion last year, had abnormal prenatal test results again in the second pregnancy. Applying a combination of genetic methods including karyotype analysis, chromosomal microarray analysis, fluorescence in situ hybridization and optical genome mapping confirmed that the pregnant woman was a carrier of a CCR involving three chromosomes and four breakpoints, and the CCR was paternal-origin. Her first and second pregnancy abnormalities were caused by chromosomal microdeletions and microduplications due to the malsegregations of the derivative chromosomes.

Conclusions: We presented a rare familial CCR involving three chromosomes and four breakpoints. This study provided precise and detailed information for the subsequent reproductive decision-making and genetic counselling of the patient.

Keywords: Complex chromosomal rearrangement, Fluorescence in situ hybridization, Chromosomal microarray analysis, Prenatal diagnosis, Optical genome mapping

Background

Complex chromosomal rearrangement (CCR) is a rare chromosomal structural abnormality involving three or more breakpoints on at least two chromosomes [1, 2]. Madan [3] classifies CCRs into four categories: (i) type I (the number of breakpoints/the number of involved chromosomes = 1) is usually caused by three-way or four-way translocation; (ii) type II (the number of breakpoints/the number of involved chromosomes > 1) has an inversion; (iii) type III (the number of breakpoints/the

number of involved chromosomes > 1) has at least one insertion; (iv) type IV (the number of breakpoints/the number of involved chromosomes > 1): there is one or more derivative chromosomes containing segments from at least three chromosomes.

About 70% CCR carriers are phenotypically normal, but they have a high risk of recurrent miscarriage, sub-fertility or infertility, and pregnancy abnormalities due to conceiving offspring with unbalanced CCRs [1, 4, 5]. With the development of cytogenetic and molecular techniques, more complex and cryptic chromosomal imbalances have been revealed [6–9]. Optical genome mapping (OGM) has been proven to show efficacy in detecting complex chromosomal structural aberrations

*Correspondence: wangh-cyto@zju.edu.cn

¹ Prenatal Diagnosis Center, Hangzhou Maternity and Child Care Hospital, #369 Kungpeng Road, Shangcheng District, Hangzhou 310008, Zhejiang, China
Full list of author information is available at the end of the article



© The Author(s) 2022. **Open Access** This article is licensed under a Creative Commons Attribution 4.0 International License, which permits use, sharing, adaptation, distribution and reproduction in any medium or format, as long as you give appropriate credit to the original author(s) and the source, provide a link to the Creative Commons licence, and indicate if changes were made. The images or other third party material in this article are included in the article's Creative Commons licence, unless indicated otherwise in a credit line to the material. If material is not included in the article's Creative Commons licence and your intended use is not permitted by statutory regulation or exceeds the permitted use, you will need to obtain permission directly from the copyright holder. To view a copy of this licence, visit <http://creativecommons.org/licenses/by/4.0/>. The Creative Commons Public Domain Dedication waiver (<http://creativecommons.org/publicdomain/zero/1.0/>) applies to the data made available in this article, unless otherwise stated in a credit line to the data.

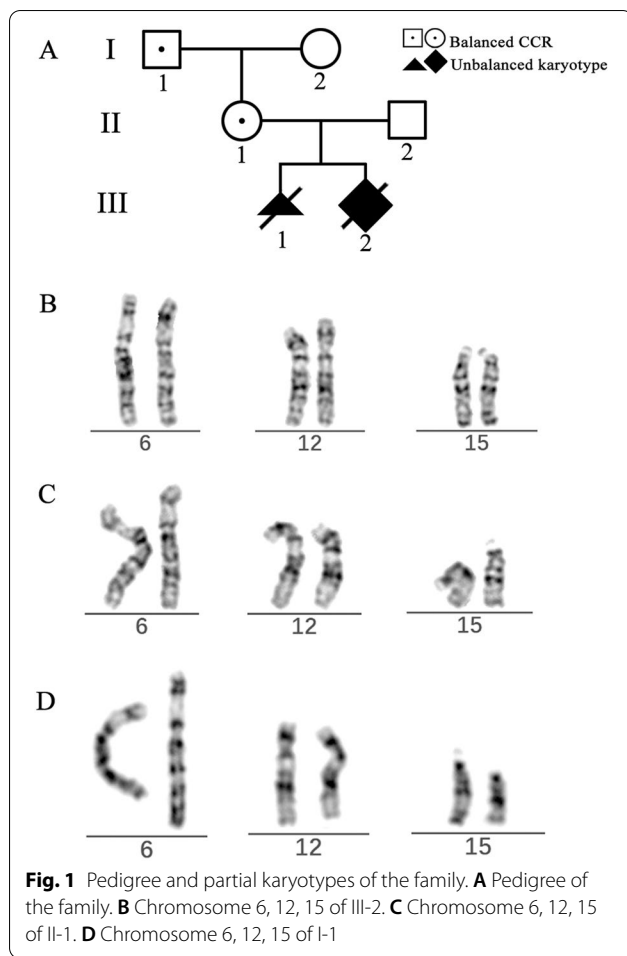


Fig. 1 Pedigree and partial karyotypes of the family. **A** Pedigree of the family. **B** Chromosome 6, 12, 15 of III-2. **C** Chromosome 6, 12, 15 of II-1. **D** Chromosome 6, 12, 15 of I-1

[10, 11]. Here, we present a familial CCR identified by OGM.

Case presentation

A 27 years old woman (II-1) was referred to our center due to the abnormal prenatal screening test results (Fig. 1A). The unconjugated estriol (uE3) level of the maternal serum was low (3.18 nmol/L, 0.69 MoM). The non-invasive prenatal test result showed 9 Mb duplication of 15q26.1q26.3. The patient had a history of spontaneous abortion (III-1) last year, and the CNV-sequencing result of the tissue of the aborted fetus was: seq[hg19] dup(6)(q27) chr6:g.166080000_170920000dup; seq[hg19] del(15)(q26.1q26.3) chr15:g.92820000_102400000del.

Because of the abnormal prenatal test results, the patient underwent amniocentesis. The amniotic fluid sample of the fetus (III-2) was then subjected to karyotype analysis and chromosomal microarray analysis (CMA). Suspected rearrangements were observed in the distal ends of chromosome 6 and 12 (Fig. 1B), but the materials of origin

were unknown. The CMA result showed: arr[GRCh37] 12q24.33(131833209_133777562) × 1, 15q26.1q26.3(92791507_102429040) × 3. The peripheral blood samples of the parents (II-1, II-2) were obtained to investigate the origin of the structural abnormality. The father (II-2) of the fetus showed a normal karyotype, and structural abnormalities were observed in the mother (II-1). Suspected rearrangements were found in the distal ends of chromosome 6, 12 and 15 (Fig. 1C).

The peripheral blood of the mother (II-1) and the cord blood of the fetus (III-2) were subjected to OGM. The mother (II-1) had three derivative chromosomes (chromosome 6, 12 and 15), and the fetus (III-2) had two derivative chromosomes (chromosome 6 and 12) inherited from the mother. The breakages and fusions of the chromosomes were identified by OGM (Fig. 2). Fluorescence in situ hybridization (FISH) analysis verified the results (Fig. 3). The fetus (III-2) had the same derivative chromosome 6 and 12 with the pregnant woman (II-1) and two copies of normal chromosome 15. Therefore, the pregnant woman (II-1) was a carrier of the balanced CCR, and the fetus (III-2) had the unbalanced CCR. Because the reverse insertion of the segment 6q27 onto 12q24.33 was submicroscopic (2.581M) and 6q27 was not subdivided into sub-bands, this reverse insertion could not be described by karyotype. In brief, the karyotype of II-1 was 46,XX,der(6)t(6;15)(q27;q26.1)dpat,der(12)t(6;12)(q27;q24.33)dpat,der(15)t(12;15)(q24.33;q26.1)dpat, and the karyotype of III-2 was 46,XX,der(6)t(6;15)(q27;q26.1)dmata,der(12)t(6;12)(q27;q24.33)dmata.

The peripheral blood samples of the parents (I-1, I-2) of the pregnant woman (II-1) were obtained and underwent karyotyping. The father (I-1) of the pregnant woman had the same karyotype as his daughter (Fig. 1D), and the mother (I-2) of the pregnant woman had a normal karyotype.

Discussion

Most CCR cases are de novo in origin [1]. The majority of familial CCRs are transmitted through females, and a very few male transmission CCR cases have been reported [1, 2]. This is because CCRs would impair the spermatogenesis or lead to meiotic arrest [12–14]. In the present case, the CCR was transmitted through both male (I-1) and female (II-1). During meiosis I, the derivative chromosomes would form a hexavalent structure (Fig. 4). This structure allows the pairing of the chromosomes, where only small segments around the breakpoints are not fully paired. In this case, the theoretical modes of segregations (3:3, 4:2, 5:1, 6:0) would produce many different gametes [2]. However, the most frequent mode is symmetric (3:3) segregation, resulting in theoretically 20 kinds of gametes including one normal, one

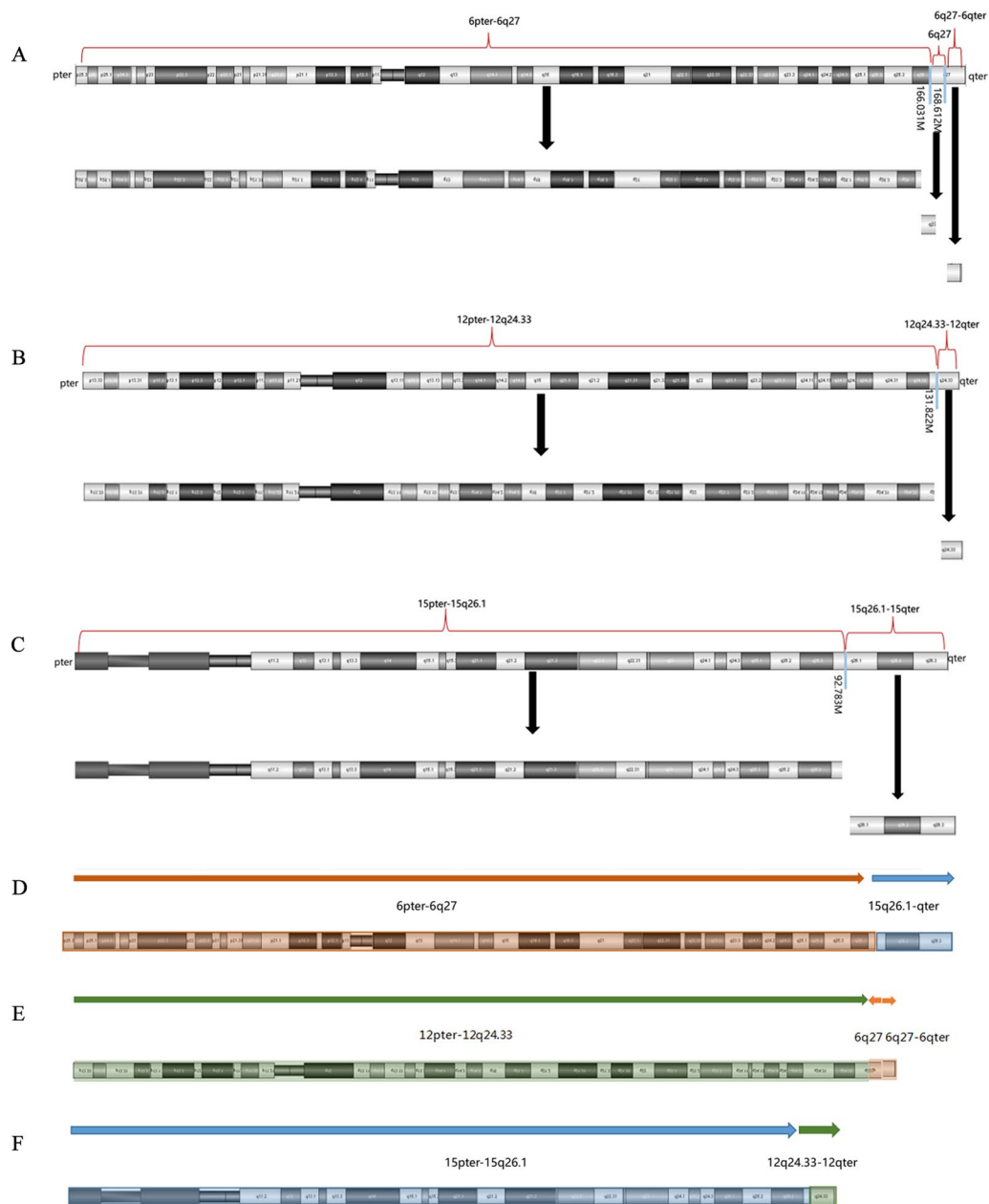


Fig. 2 Schematic diagram of the breakages and fusions of chromosome 6, 12 and 15. **A** Chromosome 6 breaks into three segments: 6pter-6q27 (0M–166.031M), 6q27 (166.031M–168.612 M), 6q27-6qter (168.612M–171.016M). **B** Chromosome 12 breaks into two segments: 12pter-12q24.33 (0M–131.822M), 12q24.33-12qter (131.822M–133.840M). **C** Chromosome 15 breaks into two segments: 15pter-15q26.1 (0M–92.793M), 15q26.1-15qter (92.793M–102.516M). **D** The derivative chromosome 6 has resulted from a translocation of the chromosome 15 segment (15q26.1-15qter) to the long arm of chromosome 6 at band 6q27. **E** The derivative chromosome 12 has resulted from a reverse insertion of the segment 6q27 onto 12q24.33, and a translocation of segment 6q27-6qter onto chromosome 12 at 6q27. The arrows indicate the directions of the segments. **F** The derivative chromosome 15 has resulted from a translocation of the segment of chromosome 12 (12q24.33-12qter) to chromosome 15 at 15q26.1

balanced and 18 unbalanced gametes [2, 3]. Therefore, we could conclude from the CNV-sequencing result of III-1 that III-1 had the derivative chromosome 12, 15 and two

copies of normal chromosome 6, leading to the unbalanced chromosomal rearrangement.

Because III-1 had three copies of 6q27 and III-2 had three copies of 15q26.1q26.3, uniparental disomy (UPD)

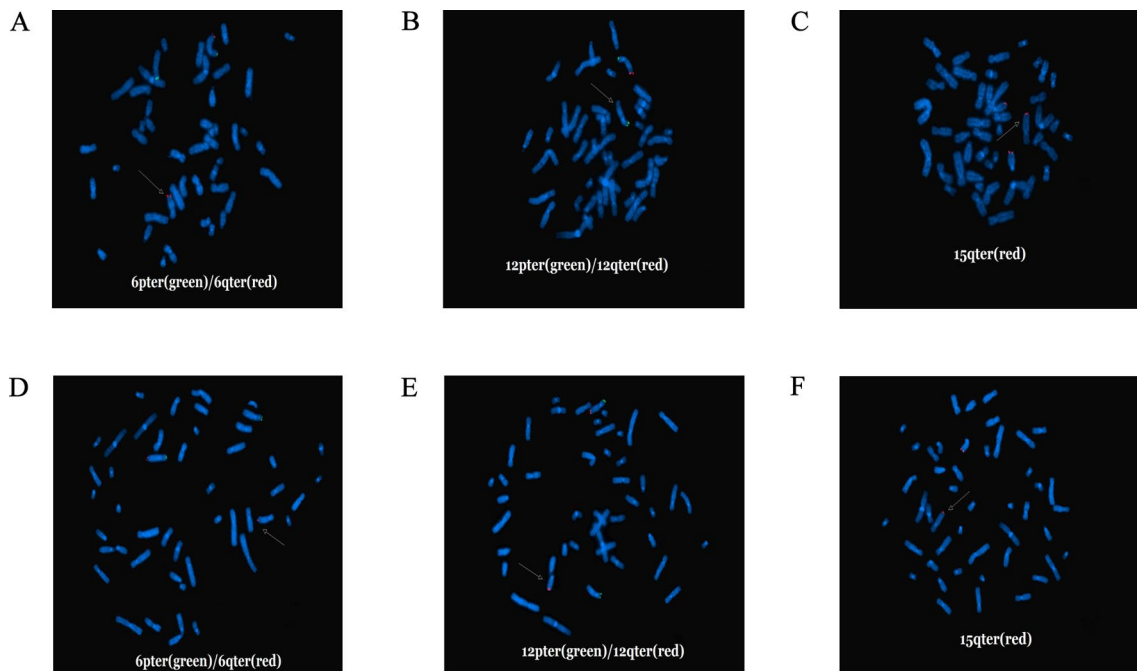


Fig. 3 Fluorescence in situ hybridization (FISH) results of III-2 (**A–C**) and II-1 (**D–F**). **A** One 6qter (red) signal was found on the distal end of chromosome 12. **B** One 12qter (red) signal was missing. **C** Three 15qter (red) signals was observed, and one signal was found on the distal end of chromosome 6. **D** One 6qter (red) signal was observed on the distal end of chromosome 12. **E** One 12qter (red) signal was found on the distal end of chromosome 15. **F** One 15qter (red) signal was observed on the distal end of chromosome 6

existed in III-1 and III-2. Since UPD(6)pat would lead to transient neonatal diabetes mellitus and 6q27 is not critical for the disorder development [15], III-1 with

segUPD(6)mat in 6q27 didn't have the risk of the imprinting-caused disorder. UPD(15)mat is associated with Prader Willi syndrome (PWS), but segUPD(15)mat in 15q26.1 to 15q26.3 is not critical for PWS development [15]. Therefore, III-2 might not be affected by imprinting.

The recurrence risk of CCR is difficult to estimate, because each CCR is unique and needs to be studied separately [5, 16]. In general, the risk is related to the nature of the CCR, the number of involved chromosomes and breakpoints [2]. It is known that the severity of abnormal pregnancy outcome grows with the increasing number of involved chromosomes and breakpoints [17]. In the present study, the parents decided to terminate the pregnancy, and we suggested preimplantation genetic diagnosis of embryos for their future reproductive decisions.

In this study, we applied multiple techniques to reveal the complicated breakages and fusions of the chromosomes. Karyotyping could not identify submicroscopic rearrangements (<5 Mb), while CMA could not detect balanced translocations [4, 5]. FISH analysis needs specific probes and complex procedures. OGM is a long DNA molecule-based technique which could recognize whole-genome-wide structural variations [18]. It is an optimal method for detecting chromosomal structural variations, especially for the analysis of CCRs [19–21]. In the present case, OGM identified a more complicated

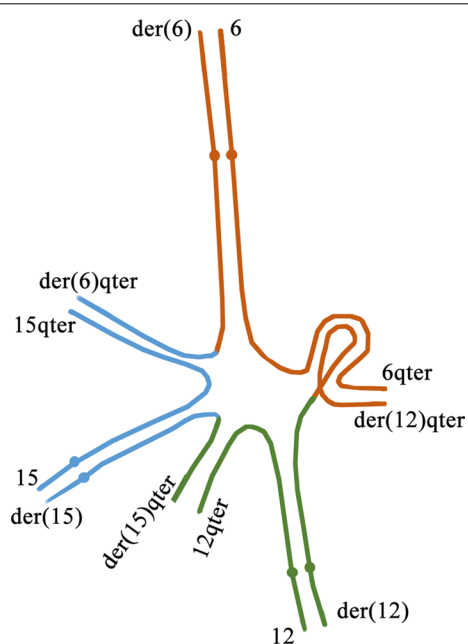


Fig. 4 Schematic diagram of the hexavalent structure formed by chromosome 6, 12, 15 and derivative chromosome 6, 12, 15

rearrangement than initially appreciated, and the result was validated by FISH. These methods applied in the study are supplementary to each other, and identified a rare CCR event in this family, which greatly assisted the prenatal diagnosis and genetic counselling. Combining multiple molecular and cytogenetic techniques would help reveal cryptic structural aberrations such as small segment translocations or inversions and help understand the underlying genetic etiology of recurrent miscarriages or pregnancy abnormalities.

Acknowledgements

Not applicable.

Author contributions

YY acquired the clinic data and drafted the manuscript. WH analyzed and interpreted the patient data. Both authors read and approved the final manuscript.

Funding

This study was supported by Key R&D Program of Zhejiang Province of China (2021C03030).

Availability of data and materials

The datasets used and/or analyzed during the current study are available from the corresponding author on reasonable request.

Declarations

Ethics approval and consent to participate

This study was approved by the Ethics Committee of Hangzhou Maternity and Child Care Hospital and written informed consent was obtained from the patients.

Consent for publication

The patients had provided their consent for publication.

Competing interests

The authors declare that they have no competing interests.

Author details

¹Prenatal Diagnosis Center, Hangzhou Maternity and Child Care Hospital, #369 Kungeng Road, Shangcheng District, Hangzhou 310008, Zhejiang, China.

²Department of Cell Biology and Medical Genetics, School of Medicine, Zhejiang University, Hangzhou, Zhejiang, China.

Received: 31 July 2022 Accepted: 7 September 2022

Published online: 21 September 2022

References

- Sinkar P, Devi SR. Complex chromosomal rearrangement: a case report to emphasize the need for parental karyotyping and genetic counseling. *J Hum Reprod Sci.* 2020;13(1):68–70.
- Pellestor F, Anahory T, Lefort G, Puechberty J, Liehr T, Hedon B, et al. Complex chromosomal rearrangements: origin and meiotic behavior. *Hum Reprod Update.* 2011;17(4):476–94.
- Madan K. Balanced complex chromosome rearrangements: reproductive aspects. A review. *Am J Med Genet Part A.* 2012;158A(4):947–63.
- He P, Wei X, Xu Y, Huang J, Tang N, Yan T, et al. Analysis of complex chromosomal rearrangements using a combination of current molecular cytogenetic techniques. *Mol Cytogenet.* 2022;15(1):20.
- Xing L, Shen Y, Wei X, Luo Y, Yang Y, Liu H, et al. Long-read Oxford nanopore sequencing reveals a de novo case of complex chromosomal rearrangement involving chromosomes 2, 7, and 13. *Mol Genet Genomic Med.* 2022. <https://doi.org/10.1002/mgg3.2011>.
- De Gregori M, Ciccone R, Magini P, Pramparo T, Gimelli S, Messa J, et al. Cryptic deletions are a common finding in “balanced” reciprocal and complex chromosome rearrangements: a study of 59 patients. *J Med Genet.* 2007;44(12):750–62.
- Feenstra I, Hanemaaijer N, Sikkema-Raddatz B, Yntema H, Dijkhuizen T, Lugtenberg D, et al. Balanced into array: genome-wide array analysis in 54 patients with an apparently balanced de novo chromosome rearrangement and a meta-analysis. *Eur J Hum Genet EJHG.* 2011;19(11):1152–60.
- Zhang Y, Dai Y, Tu Z, Li Q, Zhang L, Wang L. Array-CGH detection of three cryptic submicroscopic imbalances in a complex chromosome rearrangement. *J Genet.* 2009;88(3):369–72.
- Michaelson-Cohen R, Murik O, Zeligson S, Lobel O, Weiss O, Picard E, et al. Combining cytogenetic and genomic technologies for deciphering challenging complex chromosomal rearrangements. *Mol Genet Genomics.* 2022;297(4):925–33.
- Zhang S, Pei Z, Lei C, Zhu S, Deng K, Zhou J, et al. Detection of cryptic balanced chromosomal rearrangements using high-resolution optical genome mapping. *J Med Genet.* 2022. <https://doi.org/10.1136/jmedgenet-2022-108553>.
- Hao N, Zhou J, Li MM, Luo WW, Zhang HZ, Qi QW, et al. Efficacy and initial clinical evaluation of optical genome mapping in the diagnosis of structural variations. *Zhonghua Yu Fang Yi Xue Za Zhi.* 2022;56(5):632–9.
- Bartels I, Starke H, Argyriou L, Sauter SM, Zoll B, Liehr T. An exceptional complex chromosomal rearrangement (CCR) with eight breakpoints involving four chromosomes (1;3;9;14) in an azoospermic male with normal phenotype. *Eur J Med Genet.* 2007;50(2):133–8.
- Salahshourifar I, Shahrokhsahi N, Tavakolzadeh T, Beheshti Z, Gourabi H. Complex chromosomal rearrangement involving chromosomes 1, 4 and 22 in an infertile male: case report and literature review. *J Appl Genet.* 2009;50(1):69–72.
- Kim JW, Chang EM, Song SH, Park SH, Yoon TK, Shim SH. Complex chromosomal rearrangements in infertile males: complexity of rearrangement affects spermatogenesis. *Fertil Steril.* 2011;95(1):349–52 (**52.e1-5**).
- Liehr T. UPD related syndromes caused by imprinting. Uniparental disomy (UPD) in clinical genetics: a guide for clinicians and patients. Berlin: Springer; 2014. p. 49–77.
- Aristidou C, Theodosiou A, Ketoni A, Bak M, Mehrjouy MM, Tommerup N, et al. Cryptic breakpoint identified by whole-genome mate-pair sequencing in a rare paternally inherited complex chromosomal rearrangement. *Mol Cytogenet.* 2018;11:34.
- Giardino D, Corti C, Ballarati L, Finelli P, Valtorta C, Botta G, et al. Prenatal diagnosis of a de novo complex chromosome rearrangement (CCR) mediated by six breakpoints, and a review of 20 prenatally ascertained CCRs. *Prenat Diagn.* 2006;26(6):565–70.
- Mak AC, Lai YY, Lam ET, Kwok TP, Leung AK, Poon A, et al. Genome-wide structural variation detection by genome mapping on nanochannel arrays. *Genetics.* 2016;202(1):351–62.
- Levy-Sakin M, Pastor S, Mostovoy Y, Li L, Leung AKY, McCaffrey J, et al. Genome maps across 26 human populations reveal population-specific patterns of structural variation. *Nat Commun.* 2019;10(1):1025.
- Ebert P, Audano PA, Zhu Q, Rodriguez-Martin B, Porubsky D, Bondar MJ, et al. Haplotype-resolved diverse human genomes and integrated analysis of structural variation. *Science (New York, NY).* 2021;372(6537):eabf7117.
- Mantere T, Neveling K, Pebrel-Richard C, Benoist M, van der Zande G, Kater-Baats E, et al. Optical genome mapping enables constitutional chromosomal aberration detection. *Am J Hum Genet.* 2021;108(8):1409–22.

Publisher's Note

Springer Nature remains neutral with regard to jurisdictional claims in published maps and institutional affiliations.