

SCIENTIFIC REPORTS

OPEN

Evaluation of Ga-DOTA-(D-Asp)_n as bone imaging agents: D-aspartic acid peptides as carriers to bone

Kazuma Ogawa^{1,2}, Atsushi Ishizaki¹, Kenichiro Takai¹, Yoji Kitamura³, Akira Makino⁴, Takashi Kozaka³, Yasushi Kiyono⁴, Kazuhiro Shiba³ & Akira Odani¹

⁶⁷Ga-DOTA-(L-Asp)₁₁ and ⁶⁷Ga-DOTA-(L-Asp)₁₄, which have been developed as bone imaging agents, showed a high accumulation in bone and a rapid blood clearance in mice. However, peptides composed of D-amino acids are more stable *in vivo* than those composed of their L-equivalents. In this study, ⁶⁷Ga-DOTA-(D-Asp)_n (n = 2, 5, 8, 11, or 14) were synthesized using the Fmoc-based solid-phase methodology and evaluated. In hydroxyapatite binding assay, binding of ⁶⁷Ga-DOTA-(D-Asp)_n tended to increase with increasing length of the amino acid chain. ⁶⁷Ga-DOTA-(D-Asp)₁₁ and ⁶⁷Ga-DOTA-(D-Asp)₁₄ caused a high accumulation of radioactivity in the bones of the mice. However, the results for ⁶⁷Ga-DOTA-(D-Asp)_n and ⁶⁷Ga-DOTA-(L-Asp)_n were comparable. In urine analyses, the proportion of intact complex after injection of ⁶⁷Ga-DOTA-(D-Asp)₁₄ was significantly higher than that of ⁶⁷Ga-DOTA-(L-Asp)₁₄. Although ⁶⁷Ga-DOTA-(D-Asp)₁₄ was more stable than ⁶⁷Ga-DOTA-(L-Asp)₁₄, the properties of ⁶⁷Ga-DOTA-(D-Asp)_n and ⁶⁷Ga-DOTA-(L-Asp)_n as bone imaging agents may be comparable.

Recently, the performance of X-ray computed tomography (CT) and magnetic resonance imaging (MRI) method has been greatly improved, particularly in terms of their spatial resolution and technology for reconstructing the acquired images. Nuclear medicine imaging has been considered to be the most sensitive approach for diagnosing bone disorders such as bone metastases due to its ability to enable the early detection of abnormalities, namely, visualization of lesion sites before anatomical changes. For a long time, ^{99m}Tc-methylenediphosphonate (^{99m}Tc-MDP) and ^{99m}Tc-hydroxymethylenediphosphonate (^{99m}Tc-HMDP) have been widely used in bone imaging^{1–5}. Because ^{99m}Tc has the convenient physical characteristics [moderate half-life (6.01 h) for clinical use, a generator-produced radionuclide, and appropriate gamma ray energy for imaging] and imaging methods using conventional gamma cameras are simple. ^{99m}Tc-MDP and ^{99m}Tc-HMDP are complexes of ^{99m}Tc with bisphosphonate analogs having high affinity for bone since the phosphate groups in the bisphosphonate can be coordinated with calcium in hydroxyapatite crystals in bone.

The use of [¹⁸F]NaF for bone imaging was initially reported by Blau *et al.* in 1962⁶ and approved by the US Food and Drug Administration in 1972. [¹⁸F]NaF accumulates at a high level in bone because of chemisorption with the exchange of fluoride anions with the hydroxyl groups in hydroxyapatite [Ca₁₀(PO₄)₆(OH)₂]. However, [¹⁸F]NaF had not been widely used due to its limited availability and high cost, but it has recently been reevaluated. The images obtained using clinical positron emission tomography (PET) generally have high spatial resolution and PET/CT scanners have become widely available commercially. Although Even-Sapir *et al.* reported that [¹⁸F]NaF PET imaging is significantly more sensitive than ^{99m}Tc-MDP planar and ^{99m}Tc-MDP single photon emission computed tomography (SPECT) imaging⁷, the problems of limited availability and the high cost of cyclotrons have remained unresolved.

In recent years, ⁶⁸Ga (*T*_{1/2} = 68 min) has drawn substantial attention as a positron emission radionuclide for clinical PET because of its attractive radiophysical properties, such as reasonable half-life for clinical use; it has particularly been used as a generator-produced radionuclide. ⁶⁸Ga-PET does not require an on-site cyclotron because ⁶⁸Ga can be eluted from the generator on demand. Moreover, as the parent nuclide, ⁶⁸Ge (*T*_{1/2} = 271 days) has a long half-life, a generator could be used for a long period. Therefore, the demand for ⁶⁸Ga-labeled compounds for the diagnosis of bone disorders, such as bone metastases, has increased. Some new

¹Graduate School of Medical Sciences, Kanazawa University, Kanazawa, Japan. ²Institute for Frontier Science Initiative, Kanazawa University, Kanazawa, Japan. ³Advanced Science Research Center, Kanazawa University, Kanazawa, Japan. ⁴Biomedical Imaging Research Center, University of Fukui, Eiheiji, Japan. Correspondence and requests for materials should be addressed to K.O. (email: kogawa@p.kanazawa-u.ac.jp)

radiogallium-labeled complexes for bone imaging have been developed in recent years^{8–14}. Bisphosphonate analogs are used as carriers in these radiogallium-labeled complexes. For example, Fellner *et al.* reported that ⁶⁸Ga-DOTA-conjugated bisphosphonate, ⁶⁸Ga-BPAMD, showed high uptake in osteoblastic metastatic lesions in a first human PET study¹⁵. In addition, Suzuki *et al.* reported that ⁶⁸Ga-NOTA-conjugated bisphosphonate, ⁶⁸Ga-NOTA-BP, showed high bone affinity and rapid blood clearance in animal experiments¹⁰.

The acidic amino acid peptides (poly-glutamic and poly-aspartic acids) also have a high affinity for hydroxyapatite because side-chain carboxyl groups in the acidic amino acid peptides can be coordinated with calcium in hydroxyapatite, and could become carriers delivering drugs to bone^{16–18}. Recently, 1,4,7,10-tetraazacyclododecane-1,4,7,10-tetraacetic acid (DOTA) has been used as a chelating site, and Ga-DOTA-conjugated aspartic acid peptides [Ga-DOTA-(L-Asp)_n], with varying peptide lengths (n = 2, 5, 8, 11, or 14), have been developed and evaluated using the easy-to-handle radioisotope ⁶⁷Ga, which has a longer half-life (3.3 days), rather than ⁶⁸Ga¹⁹. ⁶⁷Ga-DOTA-(L-Asp)₁₁ and ⁶⁷Ga-DOTA-(L-Asp)₁₄ show high affinity for hydroxyapatite, high accumulation in bone, and rapid blood clearance in biodistribution experiments in normal mice. Accordingly, the bone/blood ratios of ⁶⁷Ga-DOTA-(L-Asp)₁₁ and ⁶⁷Ga-DOTA-(L-Asp)₁₄ are comparable to those of ^{99m}Tc-HMDP and ⁶⁷Ga-DOTA-Bn-SCN-HBP (Fig. 1A), a Ga-DOTA-conjugated bisphosphonate, which was developed and evaluated in our previous study¹¹. In these Ga-DOTA-conjugated aspartic acid peptide compounds, L-aspartic acid is used as the only component of the peptides. However, the peptides composed of D-amino acids could be more stable *in vivo* than the peptides built with L-amino acids because they are not readily recognized by the peptidases²⁰. Thus, in this study, ⁶⁷Ga-DOTA-(D-Asp)_n (Fig. 1B) of varying peptide lengths (n = 2, 5, 8, 11, or 14) were synthesized and evaluated. Moreover, to compare the different acidic amino acids as components of the carrier, ⁶⁷Ga-DOTA-(L-Glu)₁₄ (Fig. 1C) and ⁶⁷Ga-DOTA-(D-Glu)₁₄ (Fig. 1D) were synthesized and evaluated *in vitro* and *in vivo*.

Results

Preparation of ⁶⁷Ga-DOTA-(D-Asp)_n (n = 2, 5, 8, 11, or 14), ⁶⁷Ga-DOTA-(L-Glu)₁₄, and ⁶⁷Ga-DOTA-(D-Glu)₁₄. ⁶⁷Ga-DOTA-(D-Asp)_n (n = 2, 5, 8, 11, or 14), ⁶⁷Ga-DOTA-(L-Glu)₁₄, and ⁶⁷Ga-DOTA-(D-Glu)₁₄ were prepared by complexing DOTA-(D-Asp)_n, DOTA-(L-Glu)₁₄, and DOTA-(D-Glu)₁₄ with ⁶⁷Ga, respectively. Radiochemical yields of ⁶⁷Ga-DOTA-(D-Asp)₂, ⁶⁷Ga-DOTA-(D-Asp)₅, ⁶⁷Ga-DOTA-(D-Asp)₈, ⁶⁷Ga-DOTA-(D-Asp)₁₁, ⁶⁷Ga-DOTA-(D-Asp)₁₄, ⁶⁷Ga-DOTA-(L-Glu)₁₄, and ⁶⁷Ga-DOTA-(D-Glu)₁₄ were 25%, 67%, 74%, 56%, 51%, 38%, and 68% respectively. After RP-HPLC purification, ⁶⁷Ga-DOTA-(D-Asp)_n, ⁶⁷Ga-DOTA-(L-Glu)₁₄, and ⁶⁷Ga-DOTA-(D-Glu)₁₄ had radiochemical purities of over 95%. The formation of ⁶⁷Ga-DOTA-(D-Asp)_n, ⁶⁷Ga-DOTA-(L-Glu)₁₄, and ⁶⁷Ga-DOTA-(D-Glu)₁₄ complexes were determined by examining the retention times in RP-HPLC analyses. The ⁶⁷Ga-labeled complexes showed identical retention times as the corresponding nonradioactive complexes. The results indicated that the formation of ⁶⁷Ga-labeled complexes were identical to those of nonradioactive Ga complexes, which were determined by MS.

Hydroxyapatite-binding assay. Figure 2 shows the percentage of each ⁶⁷Ga-DOTA-(D-Asp)_n (n = 2, 5, 8, 11, or 14), ⁶⁷Ga-DOTA-(L-Glu)₁₄, and ⁶⁷Ga-DOTA-(D-Glu)₁₄ bound to hydroxyapatite beads. Binding of each ⁶⁷Ga-DOTA-(D-Asp)_n to the beads increased with an increasing amount of hydroxyapatite, except for that of ⁶⁷Ga-DOTA-(D-Asp)₂. Binding of ⁶⁷Ga-DOTA-(D-Asp)_n to hydroxyapatite tended to increase with increasing length of amino acid chain. The binding affinities of ⁶⁷Ga-DOTA-(L-Glu)₁₄ and ⁶⁷Ga-DOTA-(D-Glu)₁₄ were comparable to that of ⁶⁷Ga-DOTA-(D-Asp)₁₄.

Biodistribution experiments. The biodistribution of ⁶⁷Ga-DOTA-(D-Asp)_n (n = 2, 5, 8, 11, or 14), ⁶⁷Ga-DOTA-(L-Glu)₁₄, ⁶⁷Ga-DOTA-(D-Glu)₁₄, [¹⁸F]NaF, and ^{99m}Tc-MDP in normal mice is shown in Tables 1–9. Among these compounds, ⁶⁷Ga-DOTA-(D-Asp)₈, ⁶⁷Ga-DOTA-(D-Asp)₁₁, ⁶⁷Ga-DOTA-(D-Asp)₁₄, ⁶⁷Ga-DOTA-(L-Glu)₁₄, ⁶⁷Ga-DOTA-(D-Glu)₁₄, [¹⁸F]NaF, and ^{99m}Tc-MDP showed high accumulation and retention of radioactivity in bone. ⁶⁷Ga-DOTA-(D-Asp)₅ showed moderate accumulation of radioactivity in bone; however, the level of radioactivity decreased 3 h after injection. ⁶⁷Ga-DOTA-(D-Asp)₂ caused subtle accumulation of radioactivity in bone. Although there was little radioactivity in other tissues at 3 h after the injection of ⁶⁷Ga-DOTA-(D-Asp)_n, ^{99m}Tc-MDP, and [¹⁸F]NaF because of rapid excretion via the kidneys, the radioactivity in the kidneys after the injection of ⁶⁷Ga-DOTA-(L-Glu)₁₄ and ⁶⁷Ga-DOTA-(D-Glu)₁₄ was retained.

Urine Analyses. The results of urine analysis using RP-HPLC after injection of ⁶⁷Ga-DOTA-(L-Asp)₁₄ and ⁶⁷Ga-DOTA-(D-Asp)₁₄ showed that a part of these complexes metabolized to more hydrophilic complexes; some radioactivity was eluted earlier than the intact complex. The ratio of the intact complex after injection of ⁶⁷Ga-DOTA-(D-Asp)₁₄ (85.8 ± 17.4%) was significantly higher than that of ⁶⁷Ga-DOTA-(L-Asp)₁₄ (55.0 ± 13.9%).

Discussion

It has been shown that the bisphosphonate structure is very useful as a carrier of physiologically active molecules or compounds with medicinal properties. This is particularly true for bone lesions because of the high affinity of bisphosphonate for hydroxyapatite, which is plentiful in bone but not in soft tissues^{21,22}. Stable radiometal complex-conjugated bisphosphonate compounds have been designed as bone-seeking radiopharmaceuticals; they have been synthesized and evaluated for the diagnosis and therapy of bone metastases^{11,23–30}. The available data show that bisphosphonate is an excellent carrier of radioisotopes to bone lesions. Our recent study has shown that L-aspartic acid peptides could also work as carriers of radioisotopes to bone lesions; L-aspartic acid peptides have high affinity for hydroxyapatite^{19,31}. Thus, we assumed that D-aspartic acid peptides might be even better carriers. They should have a similar degree of affinity for hydroxyapatite but higher stability *in vivo* than the L-aspartic acid compounds.

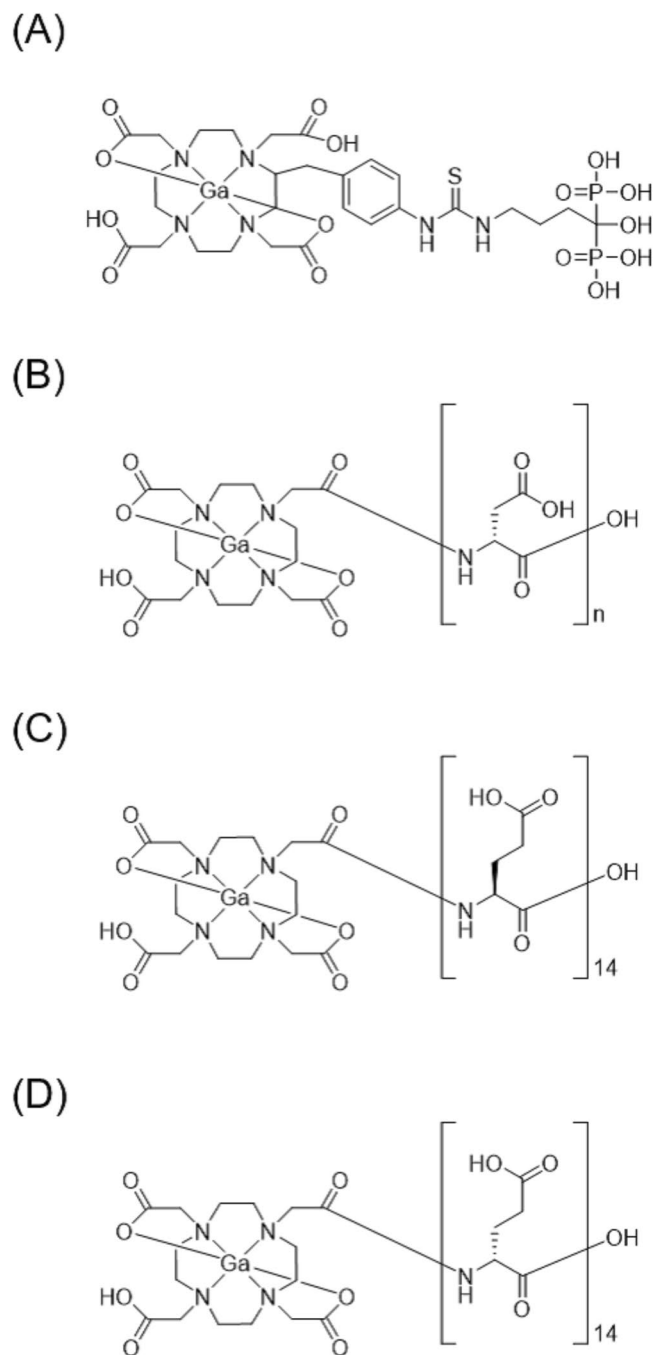


Figure 1. Chemical structures of (A) Ga-DOTA-Bn-SCN-HBP, (B) Ga-DOTA-(D-Asp)_n (n = 2, 5, 8, 11, or 14), (C) Ga-DOTA-(L-Glu)₁₄, and (D) Ga-DOTA-(D-Glu)₁₄.

In the hydroxyapatite-binding assay, ^{67}Ga -DOTA-(D-Asp)_n with a longer amino acid chain showed higher affinity for hydroxyapatite than the short-chain compounds. The binding patterns of ^{67}Ga -DOTA-(D-Asp)_n were almost the same as those of ^{67}Ga -DOTA-(L-Asp)_n¹⁹. A previous study reported that the dissociation constants and the maximal binding rates of Fmoc-peptide compounds for hydroxyapatite show no significant differences among Fmoc-(L-Asp)_n, Fmoc-(D-Asp)_n, and Fmoc-(L-Glu)_n (n = 2, 4, 6, 8, 10)³². This is consistent with the results of hydroxyapatite binding assay in our study. We found that aspartic acid peptides had the same degree of affinity for hydroxyapatite regardless of their optical isomeric form. Moreover, there were no differences between the affinities of aspartic acid peptides and glutamic acid peptides for hydroxyapatite.

In *in vivo* studies, it is known that the peptides that composed of D-amino acids are more stable than the L-amino acid peptides²⁰. A study examining the Fmoc compounds reported that, after a single i.v. administration, the plasma concentration of Fmoc-(L-Asp)₆ decreased more rapidly than the concentration of Fmoc-(D-Asp)₆. Degradation products did not appear in the plasma after the injection of Fmoc-(D-Asp)₆, but Fmoc-(L-Asp)₄ and Fmoc-(L-Asp)₂ were detected in plasma after the injection of Fmoc-(L-Asp)₆³². Therefore, we had expected to

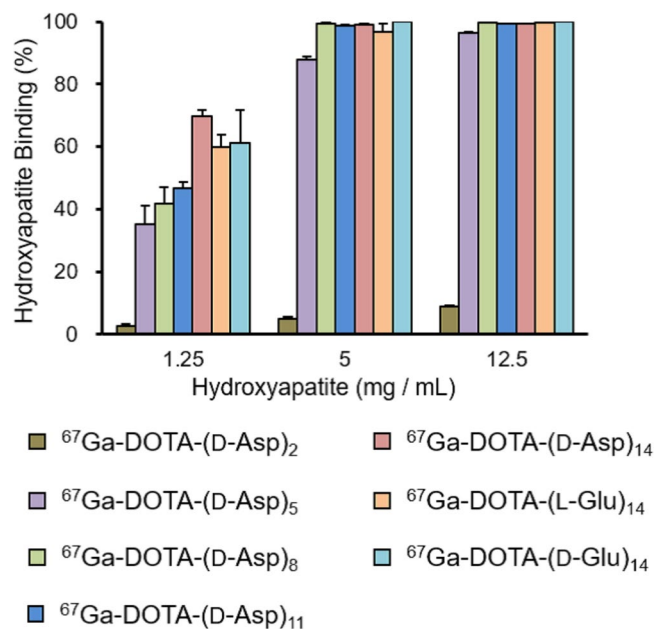


Figure 2. Binding ratios of $^{67}\text{Ga-DOTA-(D-Asp)}_n$ ($n = 2, 5, 8, 11$, or 14), $^{67}\text{Ga-DOTA-(L-Glu)}_{14}$, and $^{67}\text{Ga-DOTA-(D-Glu)}_{14}$ to hydroxyapatite beads. Data are shown as the mean \pm SD for four samples.

Tissue	Time after injection		
	10 min	60 min	180 min
Blood	2.19 (0.24)	0.24 (0.12)	0.05 (0.03)
Liver	0.57 (0.08)	0.31 (0.27)	0.11 (0.04)
Kidney	7.61 (1.17)	6.33 (4.68)	1.42 (0.59)
Small-intestine	0.50 (0.11)	0.14 (0.08)	0.08 (0.03)
Large-intestine	0.37 (0.08)	0.12 (0.11)	0.38 (0.23)
Spleen	0.50 (0.11)	0.24 (0.14)	0.08 (0.02)
Pancreas	0.57 (0.12)	0.15 (0.06)	0.09 (0.05)
Lung	1.45 (0.23)	0.26 (0.18)	0.08 (0.01)
Heart	0.86 (0.11)	0.11 (0.04)	0.06 (0.03)
Stomach ^b	0.24 (0.07)	0.06 (0.03)	0.36 (0.58)
Bone (Femur)	1.57 (0.71)	0.88 (0.34)	0.49 (0.04)
Muscle	0.53 (0.05)	0.11 (0.05)	0.08 (0.03)
Brain	0.07 (0.01)	0.02 (0.01)	0.01 (0.01)
F/B ratio ^c	0.71 (0.27)	3.78 (1.03)	12.80 (8.77)

Table 1. Biodistribution of radioactivity after i.v. injection of $^{67}\text{Ga-DOTA-(D-Asp)}_2$ in mice^a. ^aExpressed as % injected dose. Each value represents the mean (SD) for five animals. ^bExpressed as % injected dose. ^cFemur:bone ratio.

observe increased accumulation in bone after the injection of $^{67}\text{Ga-DOTA-(D-Asp)}_n$, caused by their superior *in vivo* stability. In urine analyses, $^{67}\text{Ga-DOTA-(L-Asp)}_{14}$ metabolized to more hydrophilic complexes, which should be $^{67}\text{Ga-DOTA}$ conjugated with shorter aspartic acid peptides, because of the cleavage of an amide bond in the peptide. These compounds were diluted before the full-length compound during the RP-HPLC using an ODS column. This indicates that $^{67}\text{Ga-DOTA-(D-Asp)}_{14}$ is more stable than $^{67}\text{Ga-DOTA-(L-Asp)}_{14}$. Since $^{67}\text{Ga-DOTA}$ conjugated with shorter aspartic acid peptides should show lower accumulation in bone than $^{67}\text{Ga-DOTA}$ conjugated with long aspartic acid peptides, we expected that $^{67}\text{Ga-DOTA-(D-Asp)}_n$, which has higher stability, would show higher accumulation in bone than $^{67}\text{Ga-DOTA-(L-Asp)}_n$. However, against our expectations, the accumulation of radioactivity in bone was comparable for $^{67}\text{Ga-DOTA-(L-Asp)}_n$ and $^{67}\text{Ga-DOTA-(D-Asp)}_n$. Not only $^{67}\text{Ga-DOTA-(D-Asp)}_n$ but also $^{67}\text{Ga-DOTA-(L-Asp)}_n$ immediately accumulated in bone or was excreted into urine via the kidneys with little degradation; both molecule types showed extremely rapid clearance from the blood. There was no difference between the biodistributions of $^{67}\text{Ga-DOTA-(L-Asp)}_n$ and $^{67}\text{Ga-DOTA-(D-Asp)}_n$.

To compare the biodistributions of $^{67}\text{Ga-DOTA}$ -conjugated acidic amino acid peptides with the biodistributions of other typical bone-seeking compounds, biodistribution experiments of $^{99\text{mTc}}\text{-MDP}$ and $^{18\text{F}}\text{NaF}$ were

Tissue	Time after injection		
	10 min	60 min	180 min
Blood	2.81 (0.73)	0.27 (0.02)	0.13 (0.07)
Liver	0.67 (0.13)	0.22 (0.11)	0.14 (0.03)
Kidney	12.04 (4.05)	6.31 (3.64)	1.45 (0.34)
Small-intestine	0.55 (0.16)	0.23 (0.09)	0.18 (0.19)
Large-intestine	0.47 (0.13)	0.22 (0.27)	0.22 (0.13)
Spleen	0.56 (0.12)	0.16 (0.05)	0.11 (0.03)
Pancreas	0.72 (0.11)	0.25 (0.19)	0.06 (0.00)
Lung	2.03 (0.34)	0.30 (0.11)	0.09 (0.02)
Heart	1.03 (0.29)	0.12 (0.01)	0.06 (0.01)
Stomach ^b	0.32 (0.06)	0.10 (0.06)	0.48 (0.89)
Bone (Femur)	6.78 (1.84)	5.01 (0.93)	2.80 (0.58)
Muscle	0.68 (0.21)	0.13 (0.03)	0.07 (0.03)
Brain	0.10 (0.05)	0.02 (0.01)	0.01 (0.00)
F/B ratio ^c	2.41 (0.22)	18.52 (2.59)	25.42 (10.06)

Table 2. Biodistribution of radioactivity after i.v. injection of ^{67}Ga -DOTA-(D-Asp)₅ in mice^a. ^aExpressed as % injected dose. Each value represents the mean (SD) for four animals. ^bExpressed as % injected dose. ^cFemur: blood ratio.

Tissue	Time after injection		
	10 min	60 min	180 min
Blood	1.94 (0.12)	0.33 (0.05)	0.13 (0.05)
Liver	0.46 (0.06)	0.14 (0.02)	0.11 (0.01)
Kidney	12.79 (9.18)	2.49 (2.15)	1.23 (0.48)
Small-intestine	0.39 (0.06)	0.13 (0.03)	0.10 (0.06)
Large-intestine	0.26 (0.02)	0.05 (0.00)	0.08 (0.01)
Spleen	0.42 (0.02)	0.16 (0.05)	0.09 (0.02)
Pancreas	0.57 (0.06)	0.11 (0.01)	0.08 (0.02)
Lung	1.34 (0.10)	0.26 (0.03)	0.10 (0.03)
Heart	0.63 (0.06)	0.14 (0.07)	0.05 (0.02)
Stomach ^b	0.34 (0.23)	0.04 (0.01)	0.10 (0.13)
Bone (Femur)	9.86 (1.90)	11.63 (2.57)	12.49 (2.61)
Muscle	0.57 (0.40)	0.15 (0.07)	0.14 (0.16)
Brain	0.05 (0.00)	0.01 (0.01)	0.01 (0.00)
F/B ratio ^c	5.04 (0.77)	35.96 (13.10)	122.09 (89.13)

Table 3. Biodistribution of radioactivity after i.v. injection of ^{67}Ga -DOTA-(D-Asp)₈ in mice^a. ^aExpressed as % injected dose. Each value represents the mean (SD) for five animals. ^bExpressed as % injected dose. ^cFemur: blood ratio.

performed. ^{67}Ga -DOTA-(D-Asp)₁₁, ^{67}Ga -DOTA-(D-Asp)₁₄, $^{99\text{m}}\text{Tc}$ -MDP, and [^{18}F]NaF showed excellent biodistribution as bone imaging agents, such as high bone accumulation and low radioactivity in non-target tissues. Among these agents, as [^{18}F]NaF showed the highest bone uptake, [^{18}F]NaF may have the most preferable biodistribution as a bone imaging agent. However, the bone/non-target tissue radioactivity ratios of $^{99\text{m}}\text{Tc}$ -MDP and ^{67}Ga -DOTA-(D-Asp)_n (n = 11 or 14) are sufficient for bone imaging, and $^{99\text{m}}\text{Tc}$ and ^{68}Ga have some convenient physical properties as radionuclides. Thus, $^{99\text{m}}\text{Tc}$ -MDP and ^{68}Ga -DOTA-(D-Asp)_n (n = 11 or 14) should be useful in a clinical context.

The ^{67}Ga -DOTA-conjugated L-glutamic acid peptide, ^{67}Ga -DOTA-(L-Glu)₁₄, and the ^{67}Ga -DOTA-conjugated D-glutamic acid peptide, ^{67}Ga -DOTA-(D-Glu)₁₄, also showed rapid clearance from the blood and high accumulation in bone, similarly to ^{67}Ga -DOTA-(L-Asp)₁₄ and ^{67}Ga -DOTA-(D-Asp)₁₄. Generally, radiometal-labeled peptides tend to show a high accumulation of radioactivity in the kidneys. It has been reported that the accumulation of radioactivity in the kidneys after the injection of ^{111}In -labeled peptides is affected by their molecular charges^{33,34}. As the renal brush border membrane is negatively charged, a repulsive force could arise between this membrane and negatively charged compounds. Such repulsive force could inhibit the reabsorption of these compounds into renal proximal tubular cells. The introduction of negative charges into radiometal-labeled peptides has also been studied to develop a method of decreasing the accumulation of radioactivity in the kidneys³⁵. The extremely low accumulation of radioactivity in the kidneys after the injection of ^{67}Ga -DOTA-(L-Asp)₁₄ and

Tissue	Time after injection		
	10 min	60 min	180 min
Blood	1.71 (0.21)	0.14 (0.10)	0.08 (0.04)
Liver	0.51 (0.08)	0.20 (0.10)	0.13 (0.06)
Kidney	12.83 (5.61)	2.92 (3.25)	1.00 (0.40)
Small-intestine	0.38 (0.07)	0.07 (0.01)	0.05 (0.01)
Large-intestine	0.28 (0.02)	0.03 (0.01)	0.11 (0.03)
Spleen	0.44 (0.08)	0.13 (0.06)	0.10 (0.02)
Pancreas	0.53 (0.07)	0.09 (0.09)	0.04 (0.01)
Lung	1.24 (0.18)	0.08 (0.01)	0.05 (0.01)
Heart	0.65 (0.11)	0.04 (0.01)	0.03 (0.01)
Stomach ^b	0.18 (0.03)	0.04 (0.02)	0.02 (0.01)
Bone (Femur)	11.93 (0.55)	15.26 (1.08)	15.45 (1.65)
Muscle	0.58 (0.16)	0.18 (0.10)	0.06 (0.03)
Brain	0.05 (0.01)	0.01 (0.01)	0.02 (0.01)
F/B ratio ^c	7.01 (0.56)	147.10 (71.25)	248.95 (170.64)

Table 4. Biodistribution of radioactivity after i.v. injection of ^{67}Ga -DOTA-(D-Asp)₁₁ in mice^a. ^aExpressed as % injected dose. Each value represents the mean (SD) for five animals. ^bExpressed as % injected dose. ^cFemur:bone ratio.

Tissue	Time after injection		
	10 min	60 min	180 min
Blood	2.46 (0.60)	0.09 (0.04)	0.03 (0.01)
Liver	0.51 (0.12)	0.15 (0.04)	0.05 (0.03)
Kidney	8.15 (3.86)	1.21 (0.57)	0.54 (0.12)
Small-intestine	0.55 (0.06)	0.18 (0.04)	0.12 (0.02)
Large-intestine	0.40 (0.06)	0.10 (0.01)	0.20 (0.01)
Spleen	0.48 (0.13)	0.12 (0.03)	0.12 (0.04)
Pancreas	0.88 (0.07)	0.27 (0.04)	0.14 (0.06)
Lung	1.75 (0.47)	0.28 (0.09)	0.03 (0.01)
Heart	0.94 (0.16)	0.18 (0.04)	0.11 (0.03)
Stomach ^b	0.28 (0.08)	0.07 (0.01)	0.06 (0.01)
Bone (Femur)	11.90 (2.99)	13.03 (0.90)	14.78 (2.34)
Muscle	0.77 (0.15)	0.16 (0.03)	0.16 (0.11)
Brain	0.06 (0.01)	0.01 (0.01)	0.01 (0.00)
F/B ratio ^c	4.90 (0.70)	180.99 (91.94)	526.37 (130.49)

Table 5. Biodistribution of radioactivity after i.v. injection of ^{67}Ga -DOTA-(D-Asp)₁₄ in mice^a. ^aExpressed as % injected dose. Each value represents the mean (SD) for five animals. ^bExpressed as % injected dose. ^cFemur:bone ratio.

^{67}Ga -DOTA-(D-Asp)₁₄ may have been caused by their negative charges. We had expected that ^{67}Ga -DOTA-(L-Glu)₁₄ and ^{67}Ga -DOTA-(D-Glu)₁₄, being negatively charged like ^{67}Ga -DOTA-(L-Asp)₁₄ and ^{67}Ga -DOTA-(D-Asp)₁₄, would also cause low accumulation of radioactivity in the kidneys. However, contrary to our expectations, high accumulation and retention or slower clearance of radioactivity in the kidneys were observed after the injection of ^{67}Ga -DOTA-(L-Glu)₁₄ or ^{67}Ga -DOTA-(D-Glu)₁₄. The mechanism behind these phenomena are unclear, but we must conclude that the glutamic acid peptides are not appropriate as carriers to the bone in the nuclear medicine imaging because of their association with high radioactivity in the kidneys.

In this study, no differences in the biodistributions between L-aspartic acid [^{67}Ga -DOTA-(L-Asp)_n] and D-aspartic acid [^{67}Ga -DOTA-(D-Asp)_n] compounds were observed, presumably because of their extremely rapid blood clearance. Recently, we have proposed a new concept of using a bifunctional peptide containing an aspartic acid peptide linker as a carrier to bone metastases and an RGD peptide, which has high affinity for $\alpha_v\beta_3$ integrin, as a carrier to primary cancer³¹. In this compound, L-aspartic acid is used as a composite component of the aspartic acid peptide linker. A D-aspartic acid peptide linker may be effective in the new approach. Higher stability of the D-aspartic acid peptide linker should be effective for higher accumulation in target tissues because the blood clearance of bifunctional peptide does not occur as rapidly as that of ^{67}Ga -DOTA-(D-Asp)_n. Further studies are needed to examine the effectiveness of a D-aspartic acid peptide linker in the drug design concept.

Tissue	Time after injection		
	10 min	60 min	180 min
Blood	1.85 (0.47)	0.12 (0.04)	0.05 (0.02)
Liver	0.47 (0.16)	0.13 (0.03)	0.14 (0.04)
Kidney	22.06 (4.67)	26.41 (8.53)	25.14 (3.75)
Small-intestine	0.50 (0.14)	0.13 (0.05)	0.15 (0.09)
Large-intestine	0.37 (0.13)	0.07 (0.01)	0.23 (0.15)
Spleen	0.44 (0.12)	0.10 (0.03)	0.11 (0.06)
Pancreas	0.59 (0.15)	0.13 (0.02)	0.08 (0.02)
Lung	1.57 (0.42)	0.13 (0.03)	0.06 (0.02)
Heart	0.67 (0.22)	0.10 (0.02)	0.06 (0.01)
Stomach ^b	0.22 (0.03)	0.07 (0.05)	0.07 (0.07)
Bone (Femur)	9.81 (2.35)	11.07 (1.66)	10.90 (1.17)
Muscle	0.63 (0.12)	0.10 (0.05)	0.30 (0.47)
Brain	0.05 (0.01)	0.01 (0.00)	0.03 (0.01)
F/B ratio ^c	5.41 (0.93)	97.50 (26.27)	239.85 (89.95)

Table 6. Biodistribution of radioactivity after i.v. injection of ⁶⁷Ga-DOTA-(L-Glu)₁₄ in mice^a. ^aExpressed as % injected dose. Each value represents the mean (SD) for five animals. ^bExpressed as % injected dose. ^cFemur: blood ratio.

Tissue	Time after injection		
	10 min	60 min	180 min
Blood	2.09 (0.35)	0.10 (0.02)	0.01 (0.01)
Liver	0.46 (0.07)	0.12 (0.03)	0.08 (0.02)
Kidney	13.43 (3.15)	10.61 (5.38)	6.59 (1.74)
Small-intestine	0.37 (0.03)	0.22 (0.15)	0.15 (0.05)
Large-intestine	0.42 (0.05)	0.18 (0.17)	0.25 (0.12)
Spleen	0.37 (0.06)	0.06 (0.02)	0.03 (0.02)
Pancreas	0.68 (0.26)	0.13 (0.05)	0.06 (0.02)
Lung	1.65 (0.44)	0.13 (0.02)	0.04 (0.01)
Heart	0.79 (0.13)	0.08 (0.02)	0.05 (0.02)
Stomach ^b	0.29 (0.06)	0.19 (0.11)	0.29 (0.23)
Bone (Femur)	10.98 (0.49)	11.78 (1.21)	12.20 (2.41)
Muscle	0.78 (0.31)	0.19 (0.22)	0.02 (0.01)
Brain	0.05 (0.01)	0.01 (0.00)	0.01 (0.00)
F/B ratio ^c	5.39 (1.05)	129.55 (40.09)	1179.73 (699.19)

Table 7. Biodistribution of radioactivity after i.v. injection of ⁶⁷Ga-DOTA-(D-Glu)₁₄ in mice^a. ^aExpressed as % injected dose. Each value represents the mean (SD) for four animals. ^bExpressed as % injected dose. ^cFemur: blood ratio.

Methods

Materials. Electrospray ionization mass (ESI-MS) analyses were performed with a LCQ (Thermo Fisher Scientific, Waltham, MA, USA). Matrix assisted laser desorption/ionization-time of flight mass (MALDI-TOF-MS) analyses were performed with ABI 4800 plus (AB SCIEX, Foster, CA, USA). [⁶⁷Ga]GaCl₃ was supplied by Nihon Medi-Physics Co., Ltd. (Tokyo, Japan). [¹⁸F]NaF was prepared in Fukui University and transported to Kanazawa University. [^{99m}Tc]Pertechnetate (^{99m}TcO₄⁻) was eluted in saline solution from generators (Nihon Medi-Physics Co., Ltd). ^{99m}Tc-MDP was prepared by the addition of ^{99m}TcO₄⁻ solution into the mixture of MDP (Wako Pure Chemical Industries, Ltd., Osaka, Japan), tin(II) chloride, and ascorbic acid solution. 1,4,7,10-Tetraazacyclododecane-1,4,7-tris(t-butyl acetate) (DOTA-tris) was purchased from Macrocylics (Dallas, TX, USA). 9-Fluorenylmethoxycarbonyl (Fmoc)-D-Asp(OtBu)-Wang resin, Fmoc-D-Asp(OtBu), and Fmoc-L-Glu(OtBu) were purchased from Merck KGaA (Darmstadt, Germany). Fmoc-L-Glu(OtBu)-Wang resin and 2-chlorotriyl chloride resin were purchased from Watanabe chemical Industries, LTD. (Hiroshima, Japan). Fmoc-D-Glu(OtBu) was purchased from Tokyo Chemical Industry Co., Ltd. (Tokyo, Japan). Other reagents were of reagent grade and used as received.

Synthesis of DOTA-(D-Asp)_n (n = 2, 5, 8, 11, or 14). The protected peptidyl resin was manually constructed by an Fmoc-based solid-phase methodology using a method described previously¹⁹. After

Tissue	Time after injection		
	10 min	60 min	180 min
Blood	1.78 (0.23)	0.11 (0.04)	0.02 (0.00)
Liver	1.34 (0.17)	0.09 (0.02)	0.02 (0.00)
Kidney	5.23 (2.31)	1.13 (0.89)	0.15 (0.08)
Small-intestine	1.31 (0.22)	0.68 (0.10)	0.06 (0.02)
Large-intestine	0.95 (0.22)	1.21 (0.27)	1.39 (0.19)
Spleen	1.10 (0.15)	0.08 (0.02)	0.02 (0.00)
Pancreas	0.87 (0.15)	0.08 (0.08)	0.02 (0.03)
Lung	1.44 (0.19)	0.10 (0.03)	0.03 (0.01)
Heart	1.84 (0.41)	0.15 (0.05)	0.02 (0.01)
Stomach ^b	0.36 (0.04)	0.06 (0.02)	0.13 (0.14)
Bone (Femur)	27.69 (3.15)	39.96 (2.52)	43.91 (2.64)
Muscle	0.83 (0.13)	0.07 (0.04)	0.01 (0.01)
Brain	0.10 (0.02)	0.36 (0.52)	0.05 (0.02)
F/B ratio ^c	15.59 (1.01)	381.63 (84.17)	1983.88 (256.88)

Table 8. Biodistribution of radioactivity after i.v. injection of [¹⁸F]NaF in mice^a. ^aExpressed as % injected dose. Each value represents the mean (SD) for four animals. ^bExpressed as % injected dose. ^cFemur: blood ratio.

Tissue	Time after injection		
	10 min	60 min	180 min
Blood	2.43 (0.10)	0.23 (0.04)	0.05 (0.01)
Liver	0.61 (0.02)	0.27 (0.05)	0.16 (0.04)
Kidney	10.44 (1.56)	2.03 (0.50)	1.22 (0.36)
Small-intestine	0.69 (0.15)	1.55 (1.68)	0.26 (0.08)
Large-intestine	0.61 (0.20)	0.14 (0.04)	0.23 (0.07)
Spleen	0.54 (0.07)	0.14 (0.02)	0.07 (0.01)
Pancreas	0.77 (0.10)	0.13 (0.02)	0.07 (0.01)
Lung	1.80 (0.16)	0.30 (0.03)	0.10 (0.02)
Heart	0.94 (0.05)	0.16 (0.02)	0.07 (0.02)
Stomach ^b	0.63 (0.14)	0.70 (0.37)	0.29 (0.07)
Bone (Femur)	20.76 (1.51)	27.92 (3.25)	29.03 (2.12)
Muscle	0.57 (0.09)	0.13 (0.04)	0.06 (0.01)
Brain	0.06 (0.01)	0.02 (0.00)	0.01 (0.00)
F/B ratio ^c	8.54 (0.57)	120.87 (9.30)	546.64 (91.83)

Table 9. Biodistribution of radioactivity after i.v. injection of ^{99m}Tc-MDP in mice^a. ^aExpressed as % injected dose. Each value represents the mean (SD) for four animals. ^bExpressed as % injected dose. ^cFemur: blood ratio.

the construction of the peptide chain on the resin, the Fmoc protecting group was removed using 20% piperidine in dimethylformamide (DMF), and a mixture containing two equivalents of DOTA-tris, 1,3-diisopropylcarbodiimide (DIPCDI), and 1-hydroxybenzotriazole hydrate (HOBt) in dimethylformamide (DMF) was added and allowed to react for 2 h. For the cleavage of peptides from the resin and deprotection, 0.5 mL of thioanisole and 5 mL of trifluoroacetic acid (TFA) were added to the completely protected peptide resin at 0 °C. After stirring at room temperature for 2 h, the resin was removed by filtration, and ether was added to the filtrate at 0 °C to precipitate crude peptide. The crude products were purified by reversed-phase (RP)-HPLC using a Hydrosphere 5C18 column (10 × 150 mm; YMC, Kyoto, Japan) at a flow rate of 4 mL/min with an isocratic mobile phase of water containing 0.1% TFA [in the case of DOTA-(D-Asp)₂] or using a Cosmosil 5C₁₈-AR 300 column (10 × 150 mm; Nacalai Tesque, Kyoto, Japan) at a flow rate of 4 mL/min with a gradient mobile phase from water containing 0.1% TFA to 20% methanol in water containing 0.1% TFA for 20 min [in the case of DOTA-(D-Asp)_n (n = 5, 8, 11, or 14)]. UV Chromatograms (220 nm) were obtained. The fraction containing DOTA-(D-Asp)_n (n = 2, 5, 8, 11, or 14) was determined by mass spectrometry and collected. The solvent removal from the fraction was performed by freeze-drying to provide DOTA-(D-Asp)_n as white powder.

DOTA-(D-Asp)₂ MS (ESI): *m/z* 635 (M + H)⁺, Yield: 30.4%
 DOTA-(D-Asp)₅ MS (ESI): *m/z* 980 (M + H)⁺, Yield: 39.8%
 DOTA-(D-Asp)₈ MS (ESI): *m/z* 1325 (M + H)⁺, Yield: 11.7%
 DOTA-(D-Asp)₁₁ MS (ESI): *m/z* 1670 (M + H)⁺, Yield: 12.1%
 DOTA-(D-Asp)₁₄ MS (MALDI): *m/z* 2015 (M + H)⁺, Yield: 13.6%

Synthesis of DOTA-(L-Glu)₁₄. A resin-binding protected peptide was constructed by same procedure as mentioned above using Fmoc-L-Glu(OtBu)-Wang resin, Fmoc-L-Glu(OtBu), and tris-DOTA. For the cleavage of peptides from the resin and the deprotection, 0.5 mL of thioanisole and 5 mL of TFA were added to the fully protected peptide resin at 0 °C. After stirring at room temperature for 2 h, the crude product was purified by RP-HPLC at a flow rate of 4 mL/min with a gradient mobile phase from water containing 0.1% TFA to 20% methanol in water containing 0.1% TFA for 20 min. The solvent removal from the fraction was performed by freeze-drying to provide DOTA-(L-Glu)₁₄ and as white powder.

DOTA-(L-Glu)₁₄ MS (ESI): *m/z* 2212 (M + H)⁺, Yield: 14.6%

Synthesis of DOTA-(D-Glu)₁₄. Fmoc-D-Glu(OtBu) (4 molar equivalents to resin) was dissolved in dichloromethane. 2-Chlorotriethylamine resin and *N,N*-diisopropylethylamine (DIEA, 3.5 equiv.) were added. The reaction mixture was rotated for 1 h, and 1 mL of methanol was added to react further for 30 min at room temperature. Construction, cleavage, deprotection, and purification of the peptide were performed by the same procedure as mentioned above. DOTA-(D-Glu)₁₄ was obtained as white powder.

DOTA-(D-Glu)₁₄ MS (ESI): *m/z* 2212 (M + H)⁺, Yield: 2.1%

Preparation of Ga-DOTA-(D-Asp)_n (n = 2, 5, 8, 11, or 14), Ga-DOTA-(L-Glu)₁₄, and Ga-DOTA-(D-Glu)₁₄. Ga-DOTA-(D-Asp)_n (n = 2, 5, 8, 11, or 14), Ga-DOTA-(L-Glu)₁₄, and Ga-DOTA-(D-Glu)₁₄ were synthesized using a method described previously¹⁹.

Ga-DOTA-(D-Asp)₂ MS (ESI): *m/z* 701 (M)⁺
 Ga-DOTA-(D-Asp)₅ MS (ESI): *m/z* 1046 (M)⁺
 Ga-DOTA-(D-Asp)₈ MS (ESI): *m/z* 1391 (M)⁺
 Ga-DOTA-(D-Asp)₁₁ MS (ESI): *m/z* 1736 (M)⁺
 Ga-DOTA-(D-Asp)₁₄ MS (MALDI): *m/z* 2081 (M)⁺
 Ga-DOTA-(L-Glu)₁₄ MS (ESI): *m/z* 2278 (M)⁺
 Ga-DOTA-(D-Glu)₁₄ MS (ESI): *m/z* 2278 (M)⁺

Preparation of ⁶⁷Ga-DOTA-(D-Asp)_n (n = 2, 5, 8, 11, or 14), ⁶⁷Ga-DOTA-(L-Glu)₁₄, and ⁶⁷Ga-DOTA-(D-Glu)₁₄. Approximately 50 μg of DOTA-(D-Asp)_n (n = 2, 5, 8, 11, or 14), DOTA-(L-Glu)₁₄ or DOTA-(D-Glu)₁₄ was dissolved in 75 μL of 0.2 M ammonium acetate buffer (pH 5.0), and 25 μL of ⁶⁷GaCl₃ solution (1.85 MBq) in 0.01 M HCl was added and allowed to react at 80 °C for 8 min. ⁶⁷Ga-labeled peptides were purified by RP-HPLC performed using a Hydrosphere 5C18 column (4.6 × 250 mm; YMC) at a flow rate of 1 mL/min with an isocratic mobile phase of water containing 0.1% TFA [in the case of ⁶⁷Ga-DOTA-(D-Asp)₂] or using a Cosmosil 5C₁₈-AR 300 column (4.6 × 150 mm) at a flow rate of 1 mL/min with a gradient mobile phase from water containing 0.1% TFA to 20% methanol in water containing 0.1% TFA for 20 min [in the case of ⁶⁷Ga-DOTA-(D-Asp)_n (n = 5, 8, 11, or 14), ⁶⁷Ga-DOTA-(L-Glu)₁₄, and ⁶⁷Ga-DOTA-(D-Glu)₁₄].

Preparation of [¹⁸F]NaF. No-carrier-added [¹⁸F]fluoride was produced via the ¹⁸O(p,n)¹⁸F reaction from > 98% enriched [¹⁸O]water (Taiyo Nippon Sanso Corporation, Tokyo, Japan) on an RDS eclipse RD/HP medical cyclotron (Siemens, Knoxville, TN, USA). [¹⁸F]NaF was prepared by eluting [¹⁸F]fluoride trapped on an anion exchange column (QMA Plus Light; Waters Corporation, Milford, MA, USA) with saline after washing the anion exchange column with water.

Hydroxyapatite-binding assays. Hydroxyapatite-binding assays were performed in accordance with previously described procedures^{19,25}. In brief, hydroxyapatite beads (Bio-Gel; Bio-Rad, Hercules, CA, USA) were suspended in Tris/HCl-buffered saline (50 mM, pH 7.4) at 2.5 mg/mL, 10 mg/mL, and 25 mg/mL. For the solutions of ⁶⁷Ga-DOTA-(D-Asp)_n (n = 2, 5, 8, 11, or 14), ⁶⁷Ga-DOTA-(L-Glu)₁₄, or ⁶⁷Ga-DOTA-(D-Glu)₁₄, ligand concentrations were adjusted to 19.5 μM by adding DOTA-(D-Asp)_n, DOTA-(L-Glu)₁₄, or DOTA-(D-Glu)₁₄. Two hundred microliters of each of ⁶⁷Ga-DOTA-(D-Asp)_n, ⁶⁷Ga-DOTA-(L-Glu)₁₄, or ⁶⁷Ga-DOTA-(D-Glu)₁₄ solution was added to 200 μL of the hydroxyapatite suspension, and samples were gently shaken for 1 h at room temperature. After centrifugation at 10,000 *g* for 5 min, a part of the radioactivity in the supernatants was measured using a gamma counter (AccuFLEX γ ARC-7010, Hitachi, Ltd., Tokyo, Japan). Control experiments were performed according to the same procedure without hydroxyapatite beads, which showed < 0.1% adsorption of radioactivity to vials. The ratios of binding were determined as follows:

$$\text{Hydroxyapatite binding (\%)} = (1 - [\text{sample supernatant radioactivity}] / [\text{control supernatant radioactivity}]) \times 100$$

Biodistribution experiments. Experiments with animals were conducted in strict accordance with the Guidelines for the Care and Use of Laboratory Animals of Kanazawa University. The animal experimental protocols used were approved by the Committee on Animal Experimentation of Kanazawa University (Permit Number: AP-132633). Biodistribution experiments were performed after intravenous administration of each diluted tracer solution (37–740 kBq/100 μL) to 6-week-old male ddY mice (27–32 g, Japan SLC, Inc., Hamamatsu, Japan). Four or five mice at each time point after the administration of each compound were sacrificed by decapitation at 10, 60, and 180 min post-injection. Tissues of interest were taken and weighed. Complete left femurs were isolated as representative bone samples, radioactivity was determined using gamma counters (AccuFLEX γ ARC-8001 in the case of ¹⁸F, Hitachi, Ltd.), and background counts and physical decay were corrected during counting.

Urine Analyses. ^{67}Ga -DOTA-(L-Asp) $_{14}$ was prepared according to a method described previously¹⁹. ^{67}Ga -DOTA-(L-Asp) $_{14}$ or ^{67}Ga -DOTA-(D-Asp) $_{14}$ solution (370 kBq / 200 μL) was intravenously injected to 6-week-old male ddY mice. At 1 h post-injection, mice were sacrificed and their urea samples were taken from the bladders. After ultrafiltration (Microcon-30, Merck KGaA), the filtrate samples were analyzed by RP-HPLC at a flow rate of 1 mL/min with a gradient mobile phase from water containing 0.1% TFA to 20% methanol in water containing 0.1% TFA for 20 min.

References

- Mari, C., Catafau, A. & Carrio, I. Bone scintigraphy and metabolic disorders. *Q J Nucl Med* **43**, 259–267 (1999).
- Love, C., Din, A. S., Tomas, M. B., Kalappambath, T. P. & Palestro, C. J. Radionuclide bone imaging: an illustrative review. *Radiographics* **23**, 341–358 (2003).
- Ogawa, K. & Saji, H. Advances in drug design of radiometal-based imaging agents for bone disorders. *Int J Mol Imaging* **2011**, 537687 (2011).
- Ogawa, K. & Mukai, T. Targeted imaging and therapy for bone metastases: control of pharmacokinetics of bone-targeted radiopharmaceuticals. *J Drug Deliv Sci Tec* **19**, 171–176 (2009).
- Ogawa, K. & Ishizaki, A. Well-designed bone-seeking radiolabeled compounds for diagnosis and therapy of bone metastases. *Biomed Res Int* **2015**, 676053 (2015).
- Blau, M., Nagler, W. & Bender, M. A. Fluorine-18: a new isotope for bone scanning. *J Nucl Med* **3**, 332–334 (1962).
- Even-Sapir, E. *et al.* The detection of bone metastases in patients with high-risk prostate cancer: $^{99\text{mTc}}$ -MDP Planar bone scintigraphy, single- and multi-field-of-view SPECT, ^{18}F -fluoride PET, and ^{18}F -fluoride PET/CT. *J Nucl Med* **47**, 287–297 (2006).
- Notni, J., Plutnar, J. & Wester, H. J. Bone-seeking TRAP conjugates: surprising observations and their implications on the development of gallium-68-labeled bisphosphonates. *EJNMMI Res* **2**, 13 (2012).
- Fellner, M. *et al.* ^{68}Ga -BPAMD: PET-imaging of bone metastases with a generator based positron emitter. *Nucl Med Biol* **39**, 993–999 (2012).
- Suzuki, K. *et al.* Synthesis and evaluation of a novel ^{68}Ga -chelate-conjugated bisphosphonate as a bone-seeking agent for PET imaging. *Nucl Med Biol* **38**, 1011–1018 (2011).
- Ogawa, K. *et al.* Preparation and evaluation of a radiogallium complex-conjugated bisphosphonate as a bone scintigraphy agent. *Nucl Med Biol* **38**, 631–636 (2011).
- Fellner, M. *et al.* PET/CT imaging of osteoblastic bone metastases with ^{68}Ga -bisphosphonates: first human study. *Eur J Nucl Med Mol Imaging* **37**, 834 (2010).
- Wu, Z. *et al.* New ^{68}Ga -PhenA bisphosphonates as potential bone imaging agents. *Nucl Med Biol* **43**, 360–371 (2016).
- Holub, J., Meckel, M., Kubicek, V., Rosch, F. & Hermann, P. Gallium(III) complexes of NOTA-bis (phosphonate) conjugates as PET radiotracers for bone imaging. *Contrast Media Mol Imaging* **10**, 122–134 (2015).
- Fellner, M. *et al.* PET/CT imaging of osteoblastic bone metastases with ^{68}Ga -bisphosphonates: first human study. *Eur J Nucl Med Mol Imaging* (2010).
- Kasugai, S., Fujisawa, R., Waki, Y., Miyamoto, K. & Ohya, K. Selective drug delivery system to bone: small peptide (Asp) $_6$ conjugation. *J Bone Miner Res* **15**, 936–943 (2000).
- Yokogawa, K. *et al.* Selective delivery of estradiol to bone by aspartic acid oligopeptide and its effects on ovariectomized mice. *Endocrinology* **142**, 1228–1233 (2001).
- Wang, D., Miller, S., Sima, M., Kopeckova, P. & Kopecek, J. Synthesis and evaluation of water-soluble polymeric bone-targeted drug delivery systems. *Bioconjug Chem* **14**, 853–859 (2003).
- Ogawa, K. *et al.* Development of novel radiogallium-labeled bone imaging agents using oligo-aspartic acid peptides as carriers. *PLoS One* **8**, e84335 (2013).
- Hong, S. Y., Oh, J. E. & Lee, K. H. Effect of D-amino acid substitution on the stability, the secondary structure, and the activity of membrane-active peptide. *Biochem Pharmacol* **58**, 1775–1780 (1999).
- Yewle, J. N., Puleo, D. A. & Bachas, L. G. Enhanced affinity bifunctional bisphosphonates for targeted delivery of therapeutic agents to bone. *Bioconjug Chem* **22**, 2496–2506 (2011).
- Cole, L. E., Vargo-Gogola, T. & Roeder, R. K. Targeted delivery to bone and mineral deposits using bisphosphonate ligands. *Adv Drug Deliv Rev* **99**, 12–27 (2016).
- Ogawa, K. *et al.* Design of a radiopharmaceutical for the palliation of painful bone metastases: rhenium-186-labeled bisphosphonate derivative. *J Labelled Comp Radiopharm* **47**, 753–761 (2004).
- Ogawa, K. *et al.* Development of a rhenium-186-labeled MAG3-conjugated bisphosphonate for the palliation of metastatic bone pain based on the concept of bifunctional radiopharmaceuticals. *Bioconjug Chem* **16**, 751–757 (2005).
- Ogawa, K. *et al.* Rhenium-186-monoaminemonoamidedithiol-conjugated bisphosphonate derivatives for bone pain palliation. *Nucl Med Biol* **33**, 513–520 (2006).
- Ogawa, K. *et al.* Therapeutic effects of a ^{186}Re -complex-conjugated bisphosphonate for the palliation of metastatic bone pain in an animal model. *J Nucl Med* **48**, 122–127 (2007).
- Ogawa, K., Mukai, T., Inoue, Y., Ono, M. & Saji, H. Development of a novel $^{99\text{mTc}}$ -chelate-conjugated bisphosphonate with high affinity for bone as a bone scintigraphic agent. *J Nucl Med* **47**, 2042–2047 (2006).
- Ogawa, K. *et al.* Usefulness of competitive inhibitors of protein binding for improving the pharmacokinetics of ^{186}Re -MAG3-conjugated bisphosphonate (^{186}Re -MAG3-HBP), an agent for treatment of painful bone metastases. *Eur J Nucl Med Mol Imaging* **36**, 115–121 (2009).
- Ogawa, K. *et al.* Development of [^{90}Y]DOTA-conjugated bisphosphonate for treatment of painful bone metastases. *Nucl Med Biol* **36**, 129–135 (2009).
- Uehara, T. *et al.* Assessment of ^{186}Re chelate-conjugated bisphosphonate for the development of new radiopharmaceuticals for bones. *Nucl Med Biol* **34**, 79–87 (2007).
- Ogawa, K. *et al.* Radiogallium complex-conjugated bifunctional peptides for detecting primary cancer and bone metastases simultaneously. *Bioconjug Chem* **26**, 1561–1570 (2015).
- Sekido, T. *et al.* Novel drug delivery system to bone using acidic oligopeptide: pharmacokinetic characteristics and pharmacological potential. *J Drug Target* **9**, 111–121 (2001).
- Akizawa, H. *et al.* Effect of molecular charges on renal uptake of ^{111}In -DTPA-conjugated peptides. *Nucl Med Biol* **28**, 761–768 (2001).
- Akizawa, H. *et al.* Effect of carboxyl-group of D-glutamic acid or gamma-carboxy-D-glutamic acid as N-terminal amino acid of ^{111}In -diethylenetriaminepentaacetic acid-octreotide on accumulation of radioactivity in kidney. *Biol Pharm Bull* **30**, 2226–2228 (2007).
- Oshima, N. *et al.* Design, synthesis and biological evaluation of negatively charged ^{111}In -DTPA-octreotide derivatives. *Bioorg Med Chem* **22**, 1377–1382 (2014).

Acknowledgements

This work was supported in part by Sagawa Foundation for Promotion of Cancer Research, Grant-in-Aid for Scientific Research (C) (JSPS KAKENHI Grant Number 15K09948) from Japan Society for the Promotion of Science, Terumo Life Science Foundation, and Mochida Memorial Foundation for Medical and Pharmaceutical Research.

Author Contributions

K.O. and K.T. designed the study. K.O., A.I., and K.T. carried out the experiments. A.M. and Y.K. prepared [¹⁸F] NaF. A.I. and K.T. analyzed the data. K.O. wrote the paper. K.O., A.I., K.T., Y.K., A.M., T.K., Y.K., K.S., and A.O. discussed the results and reviewed the manuscript.

Additional Information

Competing Interests: The authors declare that they have no competing interests.

Publisher's note: Springer Nature remains neutral with regard to jurisdictional claims in published maps and institutional affiliations.



Open Access This article is licensed under a Creative Commons Attribution 4.0 International License, which permits use, sharing, adaptation, distribution and reproduction in any medium or format, as long as you give appropriate credit to the original author(s) and the source, provide a link to the Creative Commons license, and indicate if changes were made. The images or other third party material in this article are included in the article's Creative Commons license, unless indicated otherwise in a credit line to the material. If material is not included in the article's Creative Commons license and your intended use is not permitted by statutory regulation or exceeds the permitted use, you will need to obtain permission directly from the copyright holder. To view a copy of this license, visit <http://creativecommons.org/licenses/by/4.0/>.

© The Author(s) 2017