



OPEN

Genetically related genotypes of cowpea present similar bacterial community in the rhizosphere

Tayná Mendes de Albuquerque¹, Lucas William Mendes², Sandra Mara Barbosa Rocha³, Jadson Emanuel Lopes Antunes³, Louise Melo de Souza Oliveira³, Vania Maria Maciel Melo⁴, Francisca Andrea Silva Oliveira⁴, Arthur Prudêncio de Araujo Pereira⁵, Veronica Brito da Silva¹, Regina Lucia Ferreira Gomes¹, Francisco de Alcantara Neto¹, Angela Celis de Almeida Lopes¹, Maurisrael de Moura Rocha⁶ & Ademir Sergio Ferreira Araujo³✉

Plant breeding reduces the genetic diversity of plants and could influence the composition, structure, and diversity of the rhizosphere microbiome, selecting more homogeneous and specialized microbes. In this study, we used 16S rRNA sequencing to assess the bacterial community in the rhizosphere of different lines and modern cowpea cultivars, to investigate the effect of cowpea breeding on bacterial community assembly. Thus, two African lines (IT85F-2687 and IT82D-60) and two Brazilian cultivars (BRS-Guariba and BRS-Tumucumaque) of cowpea were assessed to verify if the generation advance and genetic breeding influence the bacterial community in the rhizosphere. No significant differences were found in the structure, richness, and diversity of bacterial community structure between the rhizosphere of the different cowpea genotypes, and only slight differences were found at the OTU level. The complexity of the co-occurrence network decreased from African lines to Brazilian cultivars. Regarding functional prediction, the core functions were significantly altered according to the genotypes. In general, African lines presented a more abundance of groups related to chemoheterotrophy, while the rhizosphere of the modern cultivars decreased functions related to cellulolysis. This study showed that the genetic breeding process affects the dynamics of the rhizosphere community, decreasing the complexity of interaction in one cultivar. As these cowpea genotypes are genetically related, it could suggest a new hypothesis of how genetic breeding of similar genotypes could influence the rhizosphere microbiome.

The interaction between plants and microorganisms in the rhizosphere regulates several biological processes important to plants. The rhizosphere is known as the narrow zone of soil, which is driven by root traits, being a specific zone where thousands of microbial species live in close association with plants¹. Particularly, studies about plant-microorganism interactions in the rhizosphere have focused on bacterial communities that represent the most versatile and diverse groups of microbes found in soils². Recently, Geisen et al.² have estimated more than one million bacterial species in soils acting on some important biological processes, such as primary production and nutrient cycling.

In the rhizosphere, the bacterial community interacts with plant roots and stimulates plant development, inhibits pathogens, and solubilizes nutrients, so conferring positive effects on plants³. On the other hand, different traits of the rhizosphere presented by distinct plants species can shape the pattern of the bacterial community. Indeed, different plant species⁴, the stage of development⁵, characteristics of root exudation⁶, and different cultivars^{7,8}, can select specific bacterial groups and contribute to change diversity and richness of species. For instance, Araujo et al.⁵ assessed the influence of the stage of development in maize and cowpea on bacterial community in the rhizosphere and found that the structure and diversity of bacterial community varied significantly according to different plant species and, to a minor extent, to their development stage.

¹Plant Genetic Resource Group, Agricultural Science Center, Federal University of Piauí, Teresina, PI, Brazil. ²Center for Nuclear Energy in Agriculture, University of Sao Paulo, Piracicaba, SP, Brazil. ³Soil Microbial Ecology Group, Agricultural Science Center, Federal University of Piauí, Teresina, PI, Brazil. ⁴Laboratório de Ecologia Microbiana E Biotecnologia, Federal University of Ceará, Fortaleza, CE, Brazil. ⁵Soil Science Department, Federal University of Ceará, Fortaleza, CE, Brazil. ⁶Embrapa Meio Norte, Teresina, PI, Brazil. ✉email: asfaruaj@yahoo.com.br

The influence of the rhizosphere on the response of the bacterial community in several plants species and conditions is well known, but it remains unclear how plant breeding shapes the assembly of the bacterial community in the rhizosphere. Plant breeding is a process involving the changes in plant traits to obtain superior characteristics, such as biotic and abiotic stress tolerance and grain yield⁹. This process is usually done with the use of advancing generations and selection of lines with the obtention of modern cultivars¹⁰. Although being positive to humans being, plant breeding promotes a reduction in the genetic diversity of plants¹¹ and it can, consequently, select more homogeneous and specialized microbes¹². Therefore, plant breeding can potentially modify the composition, structure, and diversity of the bacterial community in the rhizosphere. Indeed, previous studies have reported that plant breeding and the advance of generation significantly impacted rhizosphere microbial communities and network assembly^{7,13,14}, promoting a homogenization and specialization of the bacterial community in the rhizosphere as influenced by the decreased genetic diversity^{12,15,16}.

As an important tropical plant species, cowpea (*Vigna unguiculata* L. Walp.) has been submitted to intensive plant breeding, mainly to figure out modern cultivars with higher tolerance to biotic and abiotic factors and yield¹⁷. However, little attention has been paid to the effect of cowpea breeding on the bacterial community in the rhizosphere. The knowledge of the behavior of the bacterial community in the rhizosphere of cowpea is important since it could positively influence plant performance. Here, we hypothesized that the process of cowpea breeding would influence plants traits and consequently drive the pattern of the bacterial community. Thus, we used 16S rRNA sequencing to assess the bacterial community in the rhizosphere of different lines and modern cowpea cultivars, to investigate the effect of cowpea breeding on bacterial community assembly.

Results

Bacterial community structure and diversity. The principal component analysis (PCA) explained 58.9% of the total variation in bacterial operational taxonomic units (OTU) of which 41.8% and 17.1% are displayed on the first two axes, respectively (Fig. 1A). As expected, the PCA showed significant differences in bacterial community structure between bulk soil and rhizosphere of cowpea genotypes (PERMANOVA Bulk x Rhizosphere $F = 0.5281$, $p = 0.0023$). However, no significant differences were found in bacterial community structure between the rhizosphere of the different cowpea genotypes (PERMANOVA Genotypes $F = 0.221$, $p = 0.0567$). The results also showed no differences in both richness and diversity of the bacterial community between each rhizosphere and the bulk soil (Fig. 1B). To compare the proportion of shared and exclusive OTUs between bulk soil and cowpea genotypes, Venn diagrams were used (Supplementary Figure S1). Bulk soil and rhizosphere (the pool of the four cultivars) shared only 16.6% of the OTUs (71 OTUs in total), while 15.2% (65) and 68.2% (292) were exclusive in bulk soil or rhizosphere, respectively. Regarding the differences between cowpea genotypes, 19% of the OTUs (69) were shared among all genotypes, while the cultivar BRS-Guariba and the line IT82D-60 showed the highest and lowest proportion of exclusive OTUs, respectively.

Bacterial community composition. The bacterial community was composed of 25 phyla, being dominated by Actinobacteria (23.5% of all the sequences), followed by Proteobacteria (23%), Firmicutes (16%), Planctomycetes (10%), Acidobacteria (8.5%), and Chloroflexi (4.5%) (Fig. 2A). However, the bacterial community composition presented different abundance according to bulk soil and rhizosphere, with enrichment of Proteobacteria, Firmicutes, Bacteroidetes, Gemmatimonadetes, among others (Fig. 2B). On the other hand, bulk soil presented a higher abundance of the phyla Planctomycetes and Chloroflexi. We also highlighted the top 10 most abundant OTUs, which together comprised about 21% of the total OTUs. The most abundant OTU was affiliated to the order Bacillales, followed by OTUs classified as Gaiellales, Xanthobacteraceae, *Bacillus*, *Conexibacter*, *Sphingomonas*, Isosphaeraceae, Frankiales, and *Ammoniphilus* (Fig. 2C).

We then conducted a pair-wise comparison between the rhizosphere of the different cowpea genotypes and the results showed an enrichment according to each genotype, suggesting a genotype-specific rhizospheric effect (Fig. 3). The line IT85F-2687 enriched Gemmata compared to line IT82D-60, which enriched Planctomycetes. Comparing the line IT85F-2687 and the cultivar BRS-Guariba, the first enriched Caulobacteraceae, Gemmata, and unclassified Chloroflexi, while the second one enriched unclassified bacterium, *Candidatus Udaeobacter*, Fimbriimonadaceae, and TK10. In the comparison between line IT85F-2687 and cultivar BRS-Tumucumaque, the first enriched unclassified Actinobacteria, Nocardioideaceae, Thermomicrobiaceae, and unclassified bacteria, while the second one enriched Geminococcaceae. The line IT82D-60 enriched Myxococales as compared to cultivar BRS-Guariba, which enriched Fimbriimonadaceae and unclassified bacteria. When compared line IT82D-60 with cultivar BRS-Tumucumaque, the first enriched Myxococales, while the second enriched *Nocardioideae*. Finally, the cultivar BRS-Guariba enriched Nitrososphaeraceae, while the cultivar BRS-Tumucumaque enriched *Nocardioideae* and *Microbispora*. In general, the differences between African lines and Brazilian cultivars were higher than within the African or Brazilian group.

Correlation analysis. To analyze the correlation between individual bacterial groups (at OTU level) and specific plant performance traits we calculated all possible Spearman's rank correlations to identify possible bioindicators that influence cowpea plant growth and health (Fig. 4). The analysis showed that 17 and 13 bacterial OTUs presented negative and positive correlations with plant performance traits, respectively. More specifically, grain yield (7 negative correlations), root dry weight (4), and pod length (4) showed the highest numbers of negative correlation with bacterial groups. In contrast, flowering (4) and nodule mass (3) showed the highest number of positive correlations. When considering bacterial groups, Unclassified bacteria (3), *Paenibacillus* (2), Polyangiaceae (2), Nitrososphaeraceae (2), and Gemmataceae (2) presented negative correlation with cowpea genotypes traits, while Nocardioideaceae (3) and Unclassified Chloroflexi (2) showed positive correlations.

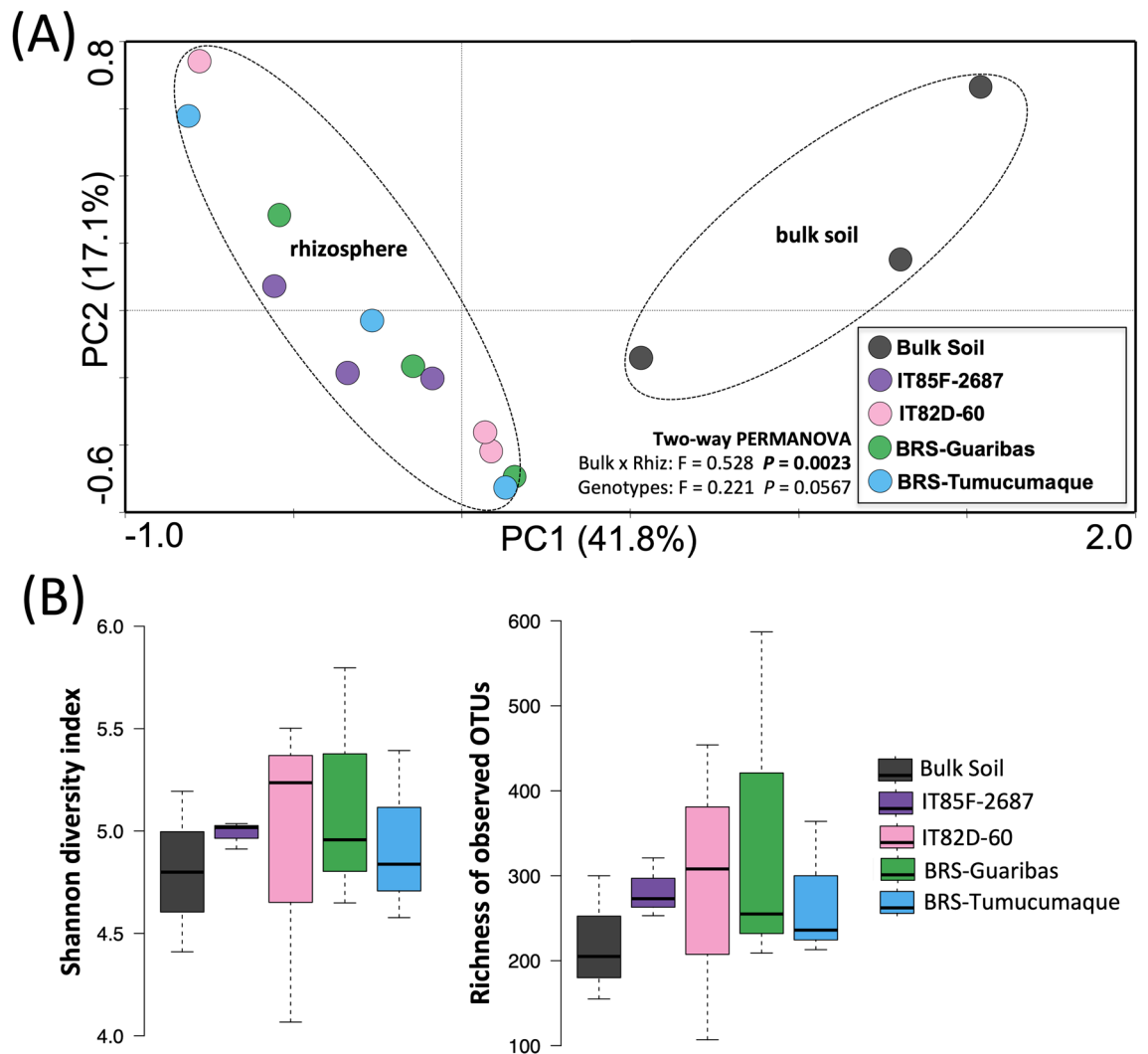


Figure 1. Structure and diversity of bacterial communities in bulk soil and rhizosphere of four cowpea genotypes based on the 16S rRNA gene. **(A)** Principal component analysis of the bacterial community structure. The dashed lines in the graph indicate significant clusters (PERMANOVA, $p < 0.05$). **(B)** Taxonomic diversity and richness based on OTU level at 97% of similarity. Error bars represent the standard deviation, and no differences were found between treatments, based on Tukey's HSD test ($p > 0.05$).

Co-occurrence network. The complexity of connections in the bacterial community was assessed by the co-occurrence network analysis (Fig. 5; Supplementary Table S1). Bulk soil and cowpea genotypes presented distinct network compositional and topological features. As expected, bulk soil exhibited less complexity compared to the rhizosphere (number of nodes = 343, edges = 187, average degree = 10.90). Regarding to cowpea genotypes, lines IT85F-2687 (number of nodes = 527, edges = 4607, average degree = 17.48) and IT82D-60 (number of nodes = 522, edges = 4185, average degree = 16.03) were similar. Interestingly, the cultivar BRS-Guariba showed a higher complexity (number of nodes = 420, edges = 5013, average degree = 23.87), while cultivar BRS-Tumucumaque showed the lowest complexity (number of nodes = 404, edges = 2686, average degree = 13.29). The keystone species in each network were also assessed (Supplementary Table S2). In the rhizosphere of line IT85F-2687, the top five key groups were Acidimicrobia, *Streptomyces*, *Acidothermus*, Nitrososphaeraceae, and *Paenibacillus*. In line IT82D-60, the top five key species were *Bradyrhizobium*, Acidobacteria - Subgroup 6, Blastocatellaceae, Syntrophobacteraceae, and *Solirubrobacter*. Regarding cultivar BRS-Guariba, the top five key species belonged to Isosphaeraceae, *Azospirillum*, *Pirellula*, TK10, and Alicyclobacillaceae; while the key species found in the rhizosphere of cultivar BRS-Tumucumaque were Rhizobiaceae, Betaproteobacteriales, *Candidatus Udaeobacter*, *Conexibacter*, and Blastocatellaceae.

Functional profile prediction of the bacterial community. The putative prediction of the potential functional profile of the soil bacterial community has shown a significant core of potential functions represented by chemoheterotrophy, aerobic chemoheterotrophy, cellulolysis, and nitrification (Supplementary Figure S2). Here, we compared the potential functions between bulk soil and the rhizosphere of each cowpea genotype, and the results revealed that these functions were significantly altered according to the genotypes. In the compari-

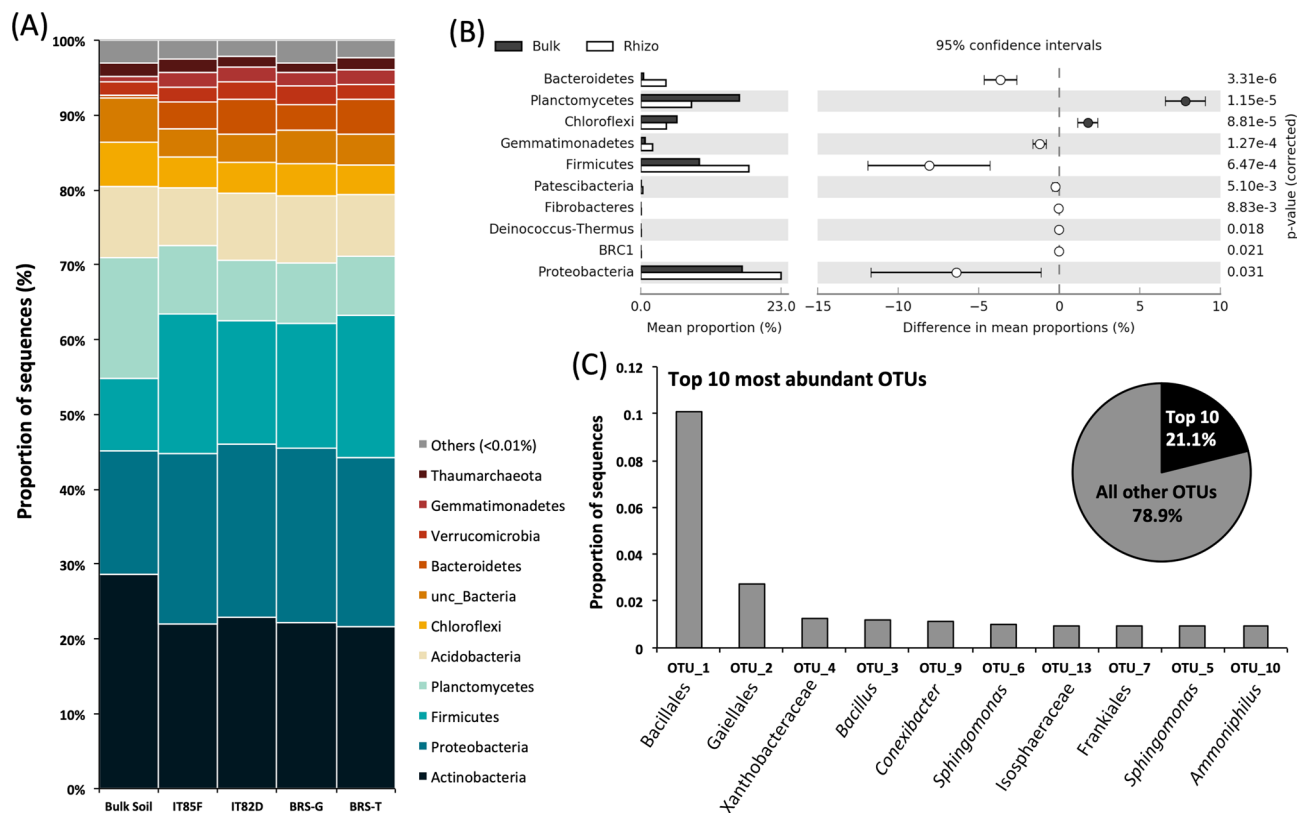


Figure 2. (A) General overview of the taxonomic composition of the bacterial community in bulk soil and rhizosphere of different cowpea genotypes. (B) Differential abundance of phyla between bulk soil and the cowpea rhizosphere based on the 16S rRNA gene. (C) Top ten most abundant OTUs found in all samples. The classification in the figure shows the lowest level of affiliation based on SILVA database at 97% of similarity.

son between bulk soil and the African lines (IT85F-2687 and IT82D-60), both increased sequences related to chemoheterotrophy. In contrast, when compared bulk soil and modern Brazilian cultivars (BRS-Guariba and BRS-Tumucumaque), bulk soil increased sequences related to cellulolysis. In general, the results have shown that African lines presented a more abundance of groups related to chemoheterotrophy, while the rhizosphere of the modern cultivars decreased potential functions related to cellulolysis.

Discussion

In this study, we assessed the bacterial community of two African lines and two modern Brazilian cowpea cultivars to address the hypothesis that the breeding process affects the microbiome assembly in the rhizosphere. First, the PCA analysis showed a different bacterial community structure between bulk soil and rhizosphere. This is expected since the rhizosphere is influenced by plant exudates and promotes differences in the microbial communities' structure when compared with the bulk soil^{4,18,19}. However, the results showed that the advance of generation from African lines (IT85F-2687 and IT82D-60) to Brazilian cultivars (BRS-Guariba and BRS-Tumucumaque), accessed through their genealogies, did not affect the richness, diversity, and overall structure of the bacterial community in the rhizosphere. This similarity among the different cowpea genotypes could be explained due to their genetic similarities (Fig. 6; Table 1), as also reported by Perez-Jaramillo et al.²⁰ who linked the rhizosphere microbiome composition of wild and domesticated common beans. Our results are also similar to those found by Simonin et al.²¹ who observed limited effects on the diversity and structure of microbial communities in wheat genotypes. This similarity can also be observed in the Venn diagram, which showed that 19% of the OTUs are shared between all cowpea genotypes, and these OTUs are the most abundant, accounting for 42.2% of total sequences. Although we did not find differences in the overall bacterial community structure among the different cowpea genotypes, each of them presented specific exclusive OTUs. The proportion of exclusive OTUs ranged from 7.4% in the line IT82D-60 to 18.2% in the cultivar BRS-Guaribas. Bulgarelli et al.²² showed that the host influence on the microbiota profile in the rhizosphere is limited, being around 5.7% of the variation attributed to the host. A similar result was found with 27 field-growth modern maize inbreds, which showed 5-7.7% variation among cultivars²³. Also, Mendes et al.⁷ assessed the microbial community in the rhizosphere of four common bean cultivars and found an average of 2.5% cultivar-specific OTUs. We also identified that the two modern cultivars shared more OTUs (33.6%) than the African lines (26.7%), revealing a higher similarity within the modern Brazilian cultivars.

The composition of the bacterial community showed an enrichment of the phyla Proteobacteria, Firmicutes, Bacteroidetes, and Gemmatimonadetes in the rhizosphere of cowpea. Proteobacteria consists of a group of

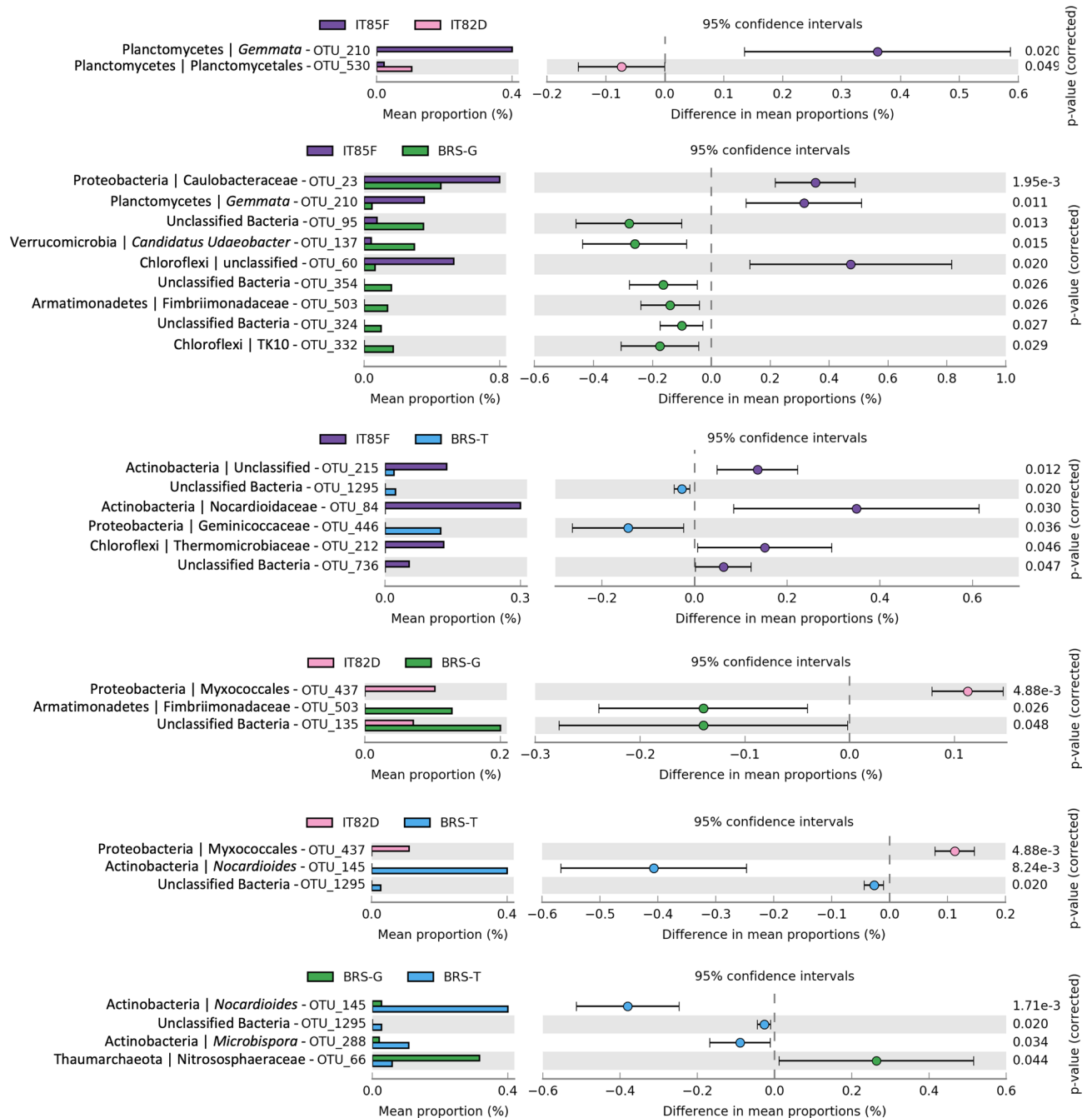


Figure 3. Scatter-plots showing the differential abundance of OTUs between the different cowpea genotypes. The significance is based on Welch's t-test with Benjamini–Hochberg correction ($p < 0.05$). The classification in the figure shows the lowest level of affiliation based on SILVA database at 97% of similarity.

beneficial bacteria, mainly those involved in biological N fixation, which is commonly found in leguminous plants, such as cowpea²⁴. Firmicutes comprises some well-known plant growth-promoting bacteria, such as *Bacillus* and *Paenibacillus*, which are known to colonize the rhizosphere of cowpea⁵. Regarding Bacteroidetes and Gemmatimonadetes, these phyla present the ability to efficiently use carbohydrates released by the roots, being favored by root exudation^{12,25}. Thus, our results showed a significant influence of rhizosphere on both bacterial phyla. Indeed, some studies with leguminous plants have found an increased abundance of these same phyla in the rhizosphere of soybean, common bean, and cowpea^{5,7,20}.

In general, when considering the top 10 most abundant bacterial OTUs, which together accounted for 21.1% of the total sequences, we observed the dominance of some interesting bacterial groups in the rhizosphere. For instance, 10% of all the sequences were affiliated to the order Bacillales, which consists of a group of bacteria involved in the plant growth-promoting in the rhizosphere⁵. Also, the order Gaiellales and the genera *Ammoniphilus*, *Conexibacter*, and *Sphingomonas* are aerobic bacteria that use several organic sources that can be released by

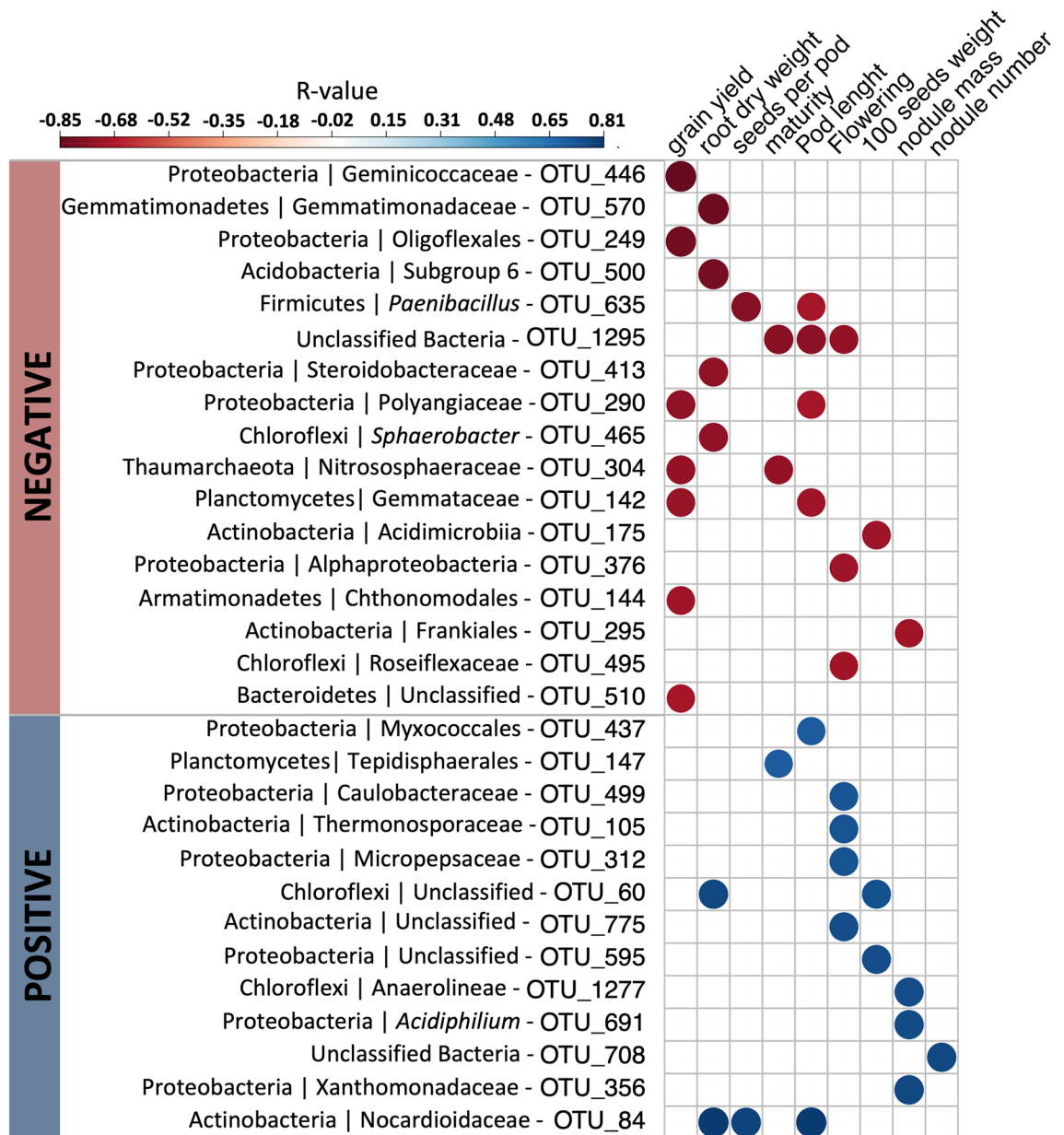


Figure 4. Heatmap showing the Spearman's rank correlation coefficients and statistical significance between OTUs and plant parameters. Blue and red colors indicate significant positive and negative correlations, respectively ($p < 0.05$).

the roots^{26–29} while Xanthobacteraceae and Frankiales are recognized as N-fixers in roots of leguminous plants³⁰. Thus, these bacterial groups are positively influenced by the rhizosphere environment and present a beneficial whole to the plant host.

The analysis of correlation showed that specific bacterial groups presented a negative correlation with yield. This result indicates that some bacterial groups that colonize the cowpea rhizosphere, such as *Paenibacillus*, Polyangiaceae, Nitrososphaeraceae, and Gemmataceae, do not contribute to increasing plant yield. Interestingly, *Paenibacillus* is a well-known plant growth-promoting bacteria that contributes to cowpea yield³¹, but in our study, this bacterium was negatively correlated with yield traits (seeds per pod and pod length). It may mean that this native *Paenibacillus* could differ from those improved *Paenibacillus* strains used in cowpea. Also, maybe the beneficial traits of *Paenibacillus* are not related to plant yield under the conditions of our experiment. It was previously reported that this genus induces drought tolerance and antagonizes pathogens³², which is not the case in this study. On the other hand, groups affiliated to Nocardioideaceae and Unclassified Chloroflexi were positively correlated with growth and productive traits. For instance, Nocardioideaceae is a family of nitrifier bacteria that acts on nitrification and contribute to increasing soil nitrate³³. Thus, these bacteria can influence positively the growth and yield of cowpea.

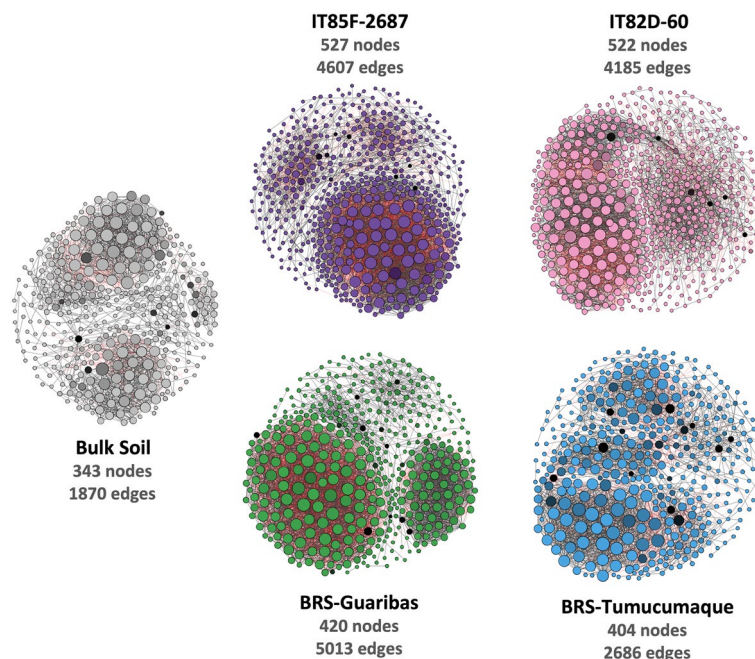


Figure 5. Network co-occurrence analysis of the bacterial communities in bulk soil and rhizosphere of four distinct cowpea genotypes based on the 16S rRNA gene. A connection stands for SparCC correlation with magnitude >0.7 (positive correlation—black edges) or <-0.7 (negative correlation—red edges) and statistically significant ($p \leq 0.01$). Each node represents taxa at OTU level, and the size of node is proportional to the number of connections (that is, degree). The color of the nodes is based on the betweenness centrality, where darker colors indicated higher values. The black nodes indicate the top five keystone species, depicted here as the nodes with the highest betweenness centrality.

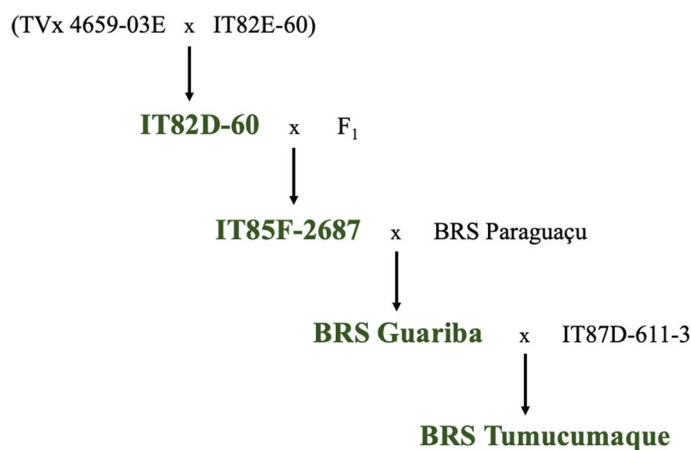


Figure 6. Genealogy of Brazilian cowpea cultivars (BRS-Guariba and BRS-Tumucumaque) and their African lines (IT85F-2687 and IT82D-60) parentals, used in this study.

Genotype	DM (days)	PL (cm)	SP (n°)	100SW (g)	DF (days)	GY (kg ha ⁻¹)
IT85F-2687	67	16.3	11	14.3	41	1280
IT82D-60	50	14.0	14	16.6	32	1140
BRS-Guariba	65	15.1	13	19.5	39	1480
BRS-Tumucumaque	70	22.0	15	20.0	40	1200

Table 1. Genetic traits of cowpea genotypes (lines and cultivars). *DM* days for maturity, *PL* pod length, *SP* seeds per pod, *100SW* 100 seeds weight, *DF* days for flowering, *GY* grain yield.

We then used a co-occurrence network to disentangle the dynamics of the bacterial community in the rhizosphere of lines and cowpea cultivars. Firstly, the results indicated a less connected bacterial community in bulk soil as compared to the rhizosphere, and it agrees with previous studies that observed more connected microbial communities in the rhizosphere^{34,35}. Second, there was a variation between genotypes where both African lines presented similar numbers of nodes and edges, while Brazilian cultivars were different. The bacterial community in the rhizosphere of BRS-Guariba and BRS-Tumucumaque presented the highest and lowest complexities, respectively. This result clearly shows that plant breeding affects the complexity of the rhizosphere microbiome. Rossmann et al.¹⁴ showed that microbial networks of wheat landraces formed a more intricate network topology than wheat cultivars, revealing a loss of microbial interactions within the rhizosphere niche. We also observed this trend in the BRS-Tumucumaque, but for the BRS-Guariba the network complexity increased. The decrease in complexity of bacterial communities in the rhizosphere of the cultivar BRS-Tumucumaque may be related to your parentage with the cultivar BRS-Guariba (one of its parentals), with loss of genetic variability (inbreeding) and due to the genetic constitution of each cultivar, which are the result of different crosses (Fig. 6). Higher network complexity is a consequence of stronger bacterial interactions in the rhizosphere⁴, and a more connected bacterial community in the rhizosphere of both lines and the cultivar BRS-Guariba indicates high interconnections between different groups of nodes, so providing higher community stability³⁶. We further identified the keystone species in each network (Supplementary Table S2). Keystone groups are bacterial taxa with more betweenness centrality and are presumed to have a central role in the community^{37,38}. Interestingly, most of the keystone species found in the rhizosphere of the cowpea genotypes consisted of plant growth-promoting bacteria, such as *Paenibacillus*, *Bradyrhizobium*, *Azospirillum*, and Rhizobiaceae. It suggests the positive effects of these keystone species on the growth and yield of cowpea. Also, some other keystone species act on N cycling or biological control in the rhizosphere, such as Nitrososphaeraceae and *Streptomyces*, respectively. Together, the results of the network analysis showed that, although the domestication process affected the dynamics of the bacterial communities, the keystone groups present a beneficial role for the plant host.

Finally, we predicted potential bacterial functions using the FAPROTAX database to verify the influence of African lines and Brazilian modern cultivars on the potential functional profile of the bacterial community. Although it is considered a potential functional prediction, this analysis has been used previously due to its suitability to understand the relationship between bacterial groups and their potential predicted functions^{39–41}. Thus, the results showed ‘chemoheterotrophy’ as the dominant potential bacterial function in the rhizosphere of lines. It suggests that the bacterial groups in the rhizosphere of lines obtain energy using C sources released by the roots⁴², which was expected. Interestingly, the bacterial groups in the rhizosphere of cultivars did not show chemoheterotrophy and it could indicate that the process of plant breeding suppressed this function. In contrast, the bacterial groups from bulk soil presented the function of cellulolysis. It is interesting because cellulase is an enzyme that breaks down the cellulose into monosaccharides and as cellulose is the major constituent of plants, the function of cellulolysis can increase the degradation of plant residues in soil⁴³. It is also interesting to note that the most abundant potential functions in all samples were related to the nitrogen cycle, even though they did not differ among treatments. The samples presented a high number of sequences related to nitrification, ammonia oxidation, nitrogen fixation, and nitrate reduction.

Conclusions

In this study, we assessed the bacterial community structure and composition inhabiting the rhizosphere of different cowpea genotypes to evaluate the effect of plant breeding on the microbial community. We hypothesized plant breeding in cowpea would influence the plants’ traits and consequently drive the pattern of the bacterial community assembly in the rhizosphere. In general, our results showed a similar bacterial community in the rhizosphere of different cowpea genotypes, but with the enrichment of specific microbial groups and keystone species. We also showed that the genetic breeding process affects the dynamics of the rhizosphere community, decreasing the complexity of interaction in one cultivar. Thus, the explanation that these cowpea genotypes are genetically concordant could be applied in this study and suggest a new hypothesis of how genetic breeding of similar genotypes could influence the rhizosphere microbiome. Also, considering the importance of the microbial communities for plant growth and health, a better understanding of the microbiome assembly during the genetic breeding process will provide important information that can be useful for future plant breeding programs.

Materials and methods

Greenhouse experiment. The experiment was conducted in a greenhouse at the Department of Soil Science, from the Federal University of Piauí, Brazil. The climate is tropical dry with a mean precipitation of 1,300 mm yr⁻¹ (with rainfall from December through May) and an annual mean temperature of 28 °C. The soil used in this study is classified as a Fluvisol, the type of soil where cowpea is commonly cultivated in Northeastern, Brazil, and it was collected at 0–20 cm depth. The soil samples were collected in an area where cowpea has been growing during the last ten years. Soil chemical properties were estimated according to Tedesco et al.⁴⁴, being: pH – 6.1; organic C – 9.2 g kg⁻¹; P – 4.9 mg kg⁻¹; K – 32.5 mg kg⁻¹; base saturation (V) – 58%.

In this study, polyvinyl chloride pots (diameter 18 cm, length 16 cm) were filled with 5 kg of soil and the experiment was arranged in a completely randomized design with three replications. Two African lines (IT85F-2687 and IT82D-60) and two Brazilian cultivars (BRS-Guariba and BRS-Tumucumaque) of cowpea were selected following a generation advance and genetic breeding (Table 1; Fig. 6). Particularly, both modern cultivars are the most used by cowpea producers in Brazil⁴⁵. All genotypes are identified and deposited in the Germplasm Bank of Cowpea from ‘Empresa Brasileira de Pesquisa Agropecuária – EMBRAPA’, in Teresina (Embrapa Meio-Norte), Piauí, Brazil. The permission to use these genotypes was obtained from Embrapa Meio-Norte. Five seeds of each genotype (lines and modern cultivars) were sown per pot and ten days after germination, plants were thinned,

leaving one individual plant per pot. Pots were irrigated daily with sterilized water to maintain soil moisture at 80% of field capacity. The temperature of the greenhouse was controlled at 30 °C.

Rhizosphere sampling. Plants were collected 40 days after emergence (corresponding to the flowering period). Rhizospheric soil sampling was performed as follows: roots and adhering soil of each plant were placed onto a 1 mm mesh sieve and washed thoroughly with a gentle stream of tap water to remove the soil. All soil samples were stored at – 20 °C prior to DNA extraction and analysis.

DNA extraction and sequencing. DNA was extracted from 0.5 g (total humid weight) of soil using the Power Lyzer Power Soil DNA Isolation Kit (MoBIO Laboratories, Carlsbad, CA, USA), according to the manufacturer's instructions. The DNA extraction was performed in triplicate for each soil sample. The quality and concentration of the extracted DNA were determined by using NanoDrop 2000 spectrophotometer (Thermo Scientific, Waltham, USA).

The V4 region of the 16S rRNA gene was amplified with region-specific primers (515F/806R)⁴⁶. Each 25 µL PCR reaction contained the following: 12.25 µL of nuclease-free water (Certified Nuclease-free, Promega, Madison, WI, USA), 5.0 µL of buffer solution 5x (MgCl₂ 2Mm), 0.75 µL of solution of dNTP's (10 mM), 0.75 µL of each primer (515 YF 40 µM e 806 R 10µM), 1.0 unit of Platinum Taq polymerase High Fidelity in a concentration of 0.5 µL (Invitrogen, Carlsbad, CA, USA), and 2.0 µL of template DNA. Moreover, a control reaction was performed by adding water instead of DNA. The conditions for PCR were as follows: 95 °C for 3 min to denature the DNA, with 35 cycles at 98°C for 20 s, 55 °C for 20 s, and 72 °C for 30 s, with a final extension of 3 min at 72°C to ensure complete elongation.

After indexing, the PCR products were cleaned up using Agencourt AMPure XP – PCR purification beads (Beckman Coulter, Brea, CA, USA), according to the manufacturer's manual, and quantified using the dsDNA BR assay Kit (Invitrogen, Carlsbad, CA, USA) on a Qubit 2.0 fluorometer (Invitrogen, Carlsbad, CA, USA). Once quantified, equimolar concentrations of each library were pooled into a single tube. After quantification, the molarity of the pool was determined and diluted to 2 nM, denatured, and then diluted to a final concentration of 8.0 pM with a 20% PhiX (Illumina, San Diego, CA, USA) spike for loading into the Illumina MiSeq sequencing machine (Illumina, San Diego, CA, USA).

Sequence data were processed using QIIME 2 version 2019.10. Firstly, the sequences were demultiplexed and quality control was carried out using DADA2⁴⁷, using the consensus method to remove any remaining chimeric and low-quality sequences. After filtering, approximately 355,000 high-quality sequences were obtained, with an average of ~19,600 sequences per sample. Singletons and doubletons were removed, and the samples were rarefied to 8600 sequences, following the number of the lowest sample. The taxonomic affiliation was performed at 97% similarity using the Silva database v. 132⁴⁸, and the generated matrix was further used for statistical analyses. The sequences were submitted to the NCBI Sequence Read Archive under the identification PRJNA751574.

Data analysis. To compare the bacterial community structure between treatments we used Principal component analysis. First, the data matrix was initially analyzed using Detrended correspondence analysis (DCA), indicating a linear data distribution and the best-fit mathematical model was the PCA. To test whether the different niches (i.e., bulk soil and rhizosphere) and cowpea genotypes harbored significantly different active bacterial communities we conducted a two-way permutational multivariate analysis of variance (PERMANOVA). PCA analysis was conducted using Canoco 4.5 (Biometrics, Wageningen, The Netherlands) and PERMANOVA using Past v.4⁴⁹. We also used Past to calculate the richness of observed OTUs and Shannon's diversity index, and the comparison was based on Tukey's HSD test. A Venn diagram was constructed to verify the proportion of groups exclusive and shared between treatments using the webtool Venny 2.1⁵⁰. To determine the differential composition of bacterial groups among treatments, we used the software STAMP⁵¹. P-values were calculated based on two-sided Welch's t-test, and correction using Benjamini-Hochberg FDR. In addition, to investigate the correlation between bacterial groups and cowpea plant performance properties we used Spearman's rank correlation coefficient using R⁵². We then used network analysis to assess the complexity of interactions among bacterial taxa in each treatment. For this, non-random co-occurrence analysis was carried out using the Python module 'SparCC'⁵³. For this, a table of frequency of OTUs was used for analysis, and SparCC correlations were calculated, and only strong (>0.9 or <- 0.9) and highly significant ($p < 0.01$) correlations were selected. The nodes in the reconstructed network represent OTUs, whereas the edges represent significantly positive or negative correlations between nodes. The network graphs were based on a set of measurements, including the number of nodes, number of edges, modularity, number of communities, average node connectivity, average path length, diameter, and cumulative degree distribution. The network visualization and properties measurements were calculated with the interactive platform Gephi⁵⁴. Finally, to further predict the relevant potential functions performed by the bacterial community, we performed a functional annotation using FAPROTAX⁵³, a database that maps prokaryotic clades (e.g. genera or species) to established metabolic or other ecologically relevant functions, based on cultured strains. For this, a table of frequency of taxa at the genus level was used as input and converted into a putative functional table and the comparisons were done between bulk soil and the rhizosphere of the different cowpea genotypes.

Received: 30 August 2021; Accepted: 8 February 2022

Published online: 02 March 2022

References

- Berendsen, R. L., Pieterse, C. M. J. & Bakker, P. A. H. M. The rhizosphere microbiome and plant health. *Trends Pl. Sci.* **17**, 478–486 (2012).
- Geisen, S. *et al.* A methodological framework to embrace soil biodiversity. *Soil Biol. Biochem.* **136**, 107536 (2019).
- Vieira, S. *et al.* Drivers of the composition of active rhizosphere bacterial communities in temperate grasslands. *ISME J.* **14**, 463–475 (2020).
- Sousa, R. M. S. *et al.* Diversity and structure of bacterial community in rhizosphere of lima bean. *App. Soil Ecol.* **150**, 103490 (2020).
- Araújo, A. S. F. *et al.* Bacterial community associated with rhizosphere of maize and cowpea in a subsequent cultivation. *App. Soil Ecol.* **143**, 26–34 (2019).
- Richardson, A. E. *et al.* Acquisition of phosphorus and nitrogen in the rhizosphere and plant growth promotion by microorganisms. *Plant Soil* **321**, 305–339 (2009).
- Mendes, L. W. *et al.* Breeding for soil-borne pathogen resistance impacts active rhizosphere microbiome of common bean. *ISME J.* **12**, 3038–3042 (2018).
- Mendes, L. W. *et al.* Resistance breeding of common bean shapes the physiology of the rhizosphere microbiome. *Front. Microbiol.* **10**, 2252 (2019).
- Gepts, P. A comparison between crop domestication, classical plant breeding, and genetic engineering. *Crop Sci.* **42**, 1780–1790 (2002).
- Persa, R., Ribeiro, P. C. O. & Jarquin, D. The use of high-throughput phenotyping in genomic selection context. *Crop Breed. App. Biotech.* **21**, e385921S6 (2021).
- Zhang, J. *et al.* Effect of domestication on the genetic diversity and structure of *Saccharina japonica* populations in China. *Sci. Rep.* **7**, 42158 (2017).
- Pérez-Jaramillo, J. E. *et al.* Deciphering rhizosphere microbiome assembly of wild and modern common bean (*Phaseolus vulgaris*) in native and agricultural soils from Colombia. *Microbiome* **7**, 114 (2019).
- Brisson, V. L. *et al.* Impacts of maize domestication and breeding on rhizosphere microbial community recruitment from a nutrient depleted agricultural soil. *Sci. Rep.* **9**, 15611 (2019).
- Rossmann, M. *et al.* Multitrophic interactions in the rhizosphere microbiome of wheat: from bacteria and fungi to protists. *FEMS Microbiol. Ecol.* **96**, fiae032 (2020).
- Liu, F. *et al.* Soil indigenous microbiome and plant genotypes cooperatively modify soybean rhizosphere microbiome assembly. *BMC Microbiol.* **19**, 201 (2019).
- Kavamura, V. N. *et al.* Wheat dwarfing influences selection of the rhizosphere microbiome. *Sci. Rep.* **10**, 1452 (2020).
- Freire Filho, F. R. *Feijão-caupi no Brasil: produção, melhoramento genético, avanços e desafios*. 1 ed. Teresina: Embrapa Meio-Norte, 84 p (2011).
- Ladygina, N. & Hedlund, K. Plant species influence microbial diversity and carbon allocation in the rhizosphere. *Soil Biol. Biochem.* **42**, 162–168 (2010).
- Yang, Y. *et al.* Comparisons of Soil properties, enzyme activities and microbial communities in heavy metal contaminated bulk and rhizosphere soils of *Robinia pseudoacacia* L. in the northern foot of qinling mountain. *Forests* **8**, 430 (2017).
- Pérez-Jaramillo, J. E. *et al.* Linking rhizosphere microbiome composition of wild and domesticated *Phaseolus vulgaris* to genotypic and root phenotypic traits. *ISME J.* **11**, 2244–2257 (2017).
- Simonin, M. *et al.* Influence of plant genotype and soil on the wheat rhizosphere microbiome: evidence for a core microbiome across eight African and European soils. *FEMS Microbiol. Ecol.* **96**, fiae067 (2020).
- Bulgarelli, D. *et al.* Structure and function of the bacterial root microbiota in wild and domesticated barley. *Cell Host Micro.* **17**, 392–403 (2015).
- Peiffer, J. A. *et al.* Diversity and heritability of the maize rhizosphere micro- biome under field conditions. *Proc. Natl. Acad. Sci. USA* **110**, 6548–6553 (2013).
- Lopes, L. S. *et al.* Distinct bacterial community structure and composition along different cowpea producing ecoregions in North-eastern Brazil. *Sci. Rep.* **11**, 831 (2021).
- Berlemont, R. & Martiny, A. C. Genomic potential for polysaccharide deconstruction in bacteria. *Appl. Environ. Microbiol.* **81**, 1513–1519 (2015).
- Zaitsev, G. M. *et al.* New aerobic ammonium-dependent obligately oxalotrophic bacteria: description of *Ammoniphilus oxalaticus* gen. nov., sp. nov. and *Ammoniphilus oxalivorans* gen. nov., sp. nov. *Int. J. Syst. Bacteriol.* **48**, 151–163 (1998).
- Monciardini, P. *et al.* *Conexibacter woesei* gen. nov., sp. Nov., a novel representative of a deep evolutionary line of descent within the class Actinobacteria. *Int. J. Syst. Evol. Microbiol.* **53**, 569–576 (2003).
- Yabuuchi, E. I. *et al.* Proposals of *Sphingomonas paucimobilis* gen. nov. and comb. nov., *Sphingomonas parapaucimobilis* sp. nov., *Sphingomonas yanoikuyae* sp. nov., *Sphingomonas adhaesiva* sp. nov., *Sphingomonas capsulata* comb. nov., and two genospecies of the genus *Sphingomonas*. *Microbiol. Immunol.* **34**, 99–119 (1990)
- Albuquerque, L. & Costa, M. S. The Family Gaiellaceae. In *The Prokaryotes* (eds Rosenberg, E. *et al.*) (Springer, Berlin Heidelberg, 2014).
- Sellstedt, A. & Richau, K. H. Aspects of nitrogen-fixing *Actinobacteria*, in particular free-living and symbiotic *Frankia*. *FEMS Microbiol. Lett.* **342**, 179–186 (2013).
- Santos, A. A. *et al.* Antioxidant response of cowpea co-inoculated with plant growth-promoting bacteria under salt stress. *Braz. J. Microbiol.* **49**, 513–521 (2018).
- Timmusk, S., Grantcharova, N. & Wagner, E. G. H. *Paenibacillus polymyxa* invades plant roots and forms biofilms. *Appl. Environ. Microbiol.* **71**, 7292–7300 (2005).
- Wang, P. *et al.* Shifts in microbial communities in soil, rhizosphere and roots of two major crop systems under elevated CO₂ and O₃. *Sci Rep* **7**, 15019 (2017).
- Chen, J. *et al.* Microbial assemblages associated with the rhizosphere and endosphere of an herbage, *Leymus chinensis*. *Microb. Biotechnol.* **13**, 1390–1402 (2020).
- Praeg, N. & Illmer, P. Microbial community composition in the rhizosphere of *Larix decidua* under different light regimes with additional focus on methane cycling microorganisms. *Sci. Rep.* **10**, 22324 (2020).
- Yang, W. *et al.* Response of fungal communities and co-occurrence network patterns to compost amendment in black soil of northeast China. *Front. Microbiol.* **10**, 1–11 (2019).
- Ho, A. *et al.* Response of a methane-driven interaction network to stressor intensification. *FEMS Microbiol. Ecol.* **96**, fiae180 (2020).
- Poudel, R. *et al.* Microbiome networks: a systems framework for identifying candidate microbial assemblages for disease management. *Phytopathology* **106**, 1083–1096 (2016).
- Merloti, L. F. *et al.* Forest-to-agriculture conversion in Amazon drives soil microbial communities and N-cycle. *Soil Biol. Biochem.* **137**, 107567 (2019).
- Rocha, S. M. B. *et al.* Nodule microbiome from cowpea and lima bean grown in composted tannery sludge-treated soil. *Appl. Soil Ecol.* **151**, 103542 (2020).
- May, A. *et al.* The use of indigenous bacterial community as inoculant for plant growth promotion in soybean cultivation. *Arch. Agro. Soil Sci.* <https://doi.org/10.1080/03650340.2021.1964017> (2021).

42. Zhang, X. *et al.* Composition and functional diversity of microbial community across a mangrove-inhabited mudflat as revealed by 16S rDNA gene sequences. *Sci. Total Environ.* **633**, 518–528 (2018).
43. Dimarogona, M., Topakas, E. & Christakopoulos, P. Cellulose degradation by oxidative enzymes. *Comp. Struct. Biotech. J.* **2**, e201209015 (2012).
44. Tedesco, M., Gianello, C. & Bissani, C. Análises de solo, plantas e outros materiais. UFRGS (1995).
45. Rocha, M. M. *et al.* *Feijão-caupi: do plantio à colheita* 114–142 (Viçosa, 2017).
46. Caporaso, J. G. *et al.* Global patterns of 16S rRNA diversity at a depth of millions of sequences per sample. *Proc. Natl. Acad. Sci.* **108**, 4516–4522 (2011).
47. Callahan, B. J. *et al.* DADA2: High-resolution sample inference from Illumina amplicon data. *Nat. Methods* <https://doi.org/10.1038/nmeth.3869> (2016).
48. Quast, C. *et al.* The SILVA ribosomal RNA gene database project: improved data processing and web-based tools. *Nucleic Acids Res.* **41**, 590–596 (2013).
49. Hammer, Ø., Harper, D. & Ryan, P. PAST: paleontological statistics software package for education and data analysis. *Palaeontol. Electron.* **4**, 1–9 (2001).
50. Oliveros, J. C. VENNY. An interactive tool for comparing lists with Venn diagrams. (2007) <http://bioinfogp.cnb.csic.es/tools/venny/index.html>.
51. Parks, D. H. *et al.* STAMP: statistical analysis of taxonomic and functional profiles. *Bioinformatics* **30**, 3123–3124 (2014).
52. R Core Team. R Development Core Team. R: A Language and Environment for Statistical Computing **55**, 275–286 (2016).
53. Friedman, J. & Alm, E. J. Inferring correlation networks from genomic survey data. *PLoS. Comput. Biol.* **8**, e1002687 (2012).
54. Louca, S., Parfrey, L. W. & Doebeli, M. Decoupling function and taxonomy in the global ocean microbiome. *Science* **353**, 1272–1277 (2016).
55. Bastian, M., Heymann, S. & Jacomy, M. Gephi: an open source software for exploring and manipulating networks. *ICWSM.* **8**, 361–362 (2009).

Acknowledgements

This study was funded by Conselho Nacional de Desenvolvimento Científico e Tecnológico – CNPq (grant 305069/2018-1) and Coordenação de Aperfeiçoamento de Pessoal de Nível Superior – CAPES. The authors thank to the Centro de Genética e Bioinformática (CeGenBio) from the Unit of Research (NPDM/UFC). Tayna Mendes Albuquerque, Jadson Emanuel Lopes Antunes, and Veronica Brito Silva thank CAPES for their fellowship. Ademir Sergio Ferreira de Araujo, Vania Maria Maciel Melo, Maurisrael de Moura Rocha, and Angela Celis de Almeida Lopes thank CNPq for their fellowship of research.

Author contributions

A.S.F.A., A.C.A.L., M.M.R., and L.W.M. designed the experiment. T.M.A., S.M.B.R., J.E.L.A. and L.M.S.O. conducted the experiment. F.A.S.O. sequenced DNA samples. A.P.A.P. and L.W.M. analyzed the data. A.S.F.A., L.W.M., V.M.M.M., A.P.A.P., V.B.S., R.L.F.G., and F.A.N. analyzed the results, discussed, wrote, and reviewed the manuscript. All the authors reviewed the manuscript.

Competing interests

The authors declare no competing interests.

Additional information

Supplementary Information The online version contains supplementary material available at <https://doi.org/10.1038/s41598-022-06860-x>.

Correspondence and requests for materials should be addressed to A.S.F.A.

Reprints and permissions information is available at www.nature.com/reprints.

Publisher's note Springer Nature remains neutral with regard to jurisdictional claims in published maps and institutional affiliations.



Open Access This article is licensed under a Creative Commons Attribution 4.0 International License, which permits use, sharing, adaptation, distribution and reproduction in any medium or format, as long as you give appropriate credit to the original author(s) and the source, provide a link to the Creative Commons licence, and indicate if changes were made. The images or other third party material in this article are included in the article's Creative Commons licence, unless indicated otherwise in a credit line to the material. If material is not included in the article's Creative Commons licence and your intended use is not permitted by statutory regulation or exceeds the permitted use, you will need to obtain permission directly from the copyright holder. To view a copy of this licence, visit <http://creativecommons.org/licenses/by/4.0/>.

© The Author(s) 2022