

## MICROREVIEW

# A fresh look at mycobacterial pathogenicity with the zebrafish host model

Monica Varela  | Annemarie H. Meijer 

Institute of Biology Leiden, Leiden University, Leiden, The Netherlands

**Correspondence**

Monica Varela and Annemarie H. Meijer, Institute of Biology Leiden, Leiden University, Einsteinweg 55, 2333 CC Leiden, The Netherlands.  
Email: m.varela.alvarez@biology.leidenuniv.nl and a.h.meijer@biology.leidenuniv.nl

**Funding information**

H2020 Marie Skłodowska-Curie Actions, Grant/Award Number: 721537; Nederlandse Organisatie voor Wetenschappelijk Onderzoek, Grant/Award Number: 192.151

**Abstract**

The zebrafish has earned its place among animal models to study tuberculosis and other infections caused by pathogenic mycobacteria. This model host is especially useful to study the role of granulomas, the inflammatory lesions characteristic of mycobacterial disease. The optically transparent zebrafish larvae provide a window on the initial stages of granuloma development in the context of innate immunity. Application of fluorescent dyes and transgenic markers enabled real-time visualization of how innate immune mechanisms, such as autophagy and inflammasomes, are activated in infected macrophages and how propagating calcium signals drive communication between macrophages during granuloma formation. A combination of imaging, genetic, and chemical approaches has revealed that the interplay between macrophages and mycobacteria is the main driver of tissue dissemination and granuloma development, while neutrophils have a protective function in early granulomas. Different chemokine signaling axes, conserved between humans and zebrafish, have been shown to recruit macrophages permissive to mycobacterial growth, control their microbicidal capacity, drive their spreading and aggregation, and mediate granuloma vascularization. Finally, zebrafish larvae are now exploited to explore cell death processes, emerging as crucial factors in granuloma expansion. In this review, we discuss recent advances in the understanding of mycobacterial pathogenesis contributed by zebrafish models.

**KEYWORDS**

autophagy, cell death, chemokine signalling, granulomas, inflammasomes, macrophages, Mycobacterium, tuberculosis, zebrafish model

## 1 | INTRODUCTION

Mycobacteria are the causative agents of some of the most serious human infectious diseases, including tuberculosis (TB), leprosy, and various other lung, skin, and disseminated infections (Kilinc et al., 2021). Pathogenic mycobacteria have developed highly

effective virulence mechanisms to subvert the immune defenses of their host. In particular, mycobacterial pathogens are able to establish a replication niche inside macrophages and subsequently manipulate these innate immune cells to act as transport vehicles to invade host tissues (Houben et al., 2006). Following tissue invasion, inflammatory lesions, known as tuberculous granulomas, are

This is an open access article under the terms of the Creative Commons Attribution-NonCommercial License, which permits use, distribution and reproduction in any medium, provided the original work is properly cited and is not used for commercial purposes.

© 2021 The Authors. *Molecular Microbiology* published by John Wiley & Sons Ltd.

formed. These granulomas serve as a reservoir for the persistence of mycobacteria and are regarded as a defining feature of TB and related infectious pathologies (Pagan & Ramakrishnan, 2018). Studies in mammalian models, particularly mouse, guinea pig, rabbit, and non-human primates, contributed crucial insights into mycobacterial pathogenesis and are indispensable to advance TB research (Yang et al., 2021). However, no animal model system recapitulates all aspects of human pathogenesis faithfully, nor is equally suitable to different research questions. A notable example is the question of how granulomas are initiated, which requires access to early stages of infection that are difficult to access in mammalian models (Ramakrishnan, 2013). These considerations, together with an increasing desire for reducing the use of mammalian models in research, have created a favorable situation in which the zebrafish has been able to stand out. In this regard, the zebrafish model, especially at the early life stages, greatly complements the other existing models as it requires low maintenance, is easily genetically manipulable, ideally suited for *in vivo* imaging, and amenable to drug screening. For these and other reasons, zebrafish is widely appreciated for disease modeling, especially for the study of host-pathogen interaction (Meijer & Spaink, 2011; Varela et al., 2017; Yoshida et al., 2017).

TB is caused by the bacterium *Mycobacterium tuberculosis* (*Mtb*) but its close genetic relative *Mycobacterium marinum* (*Mmar*) in combination with its natural host, the zebrafish, have become an attractive tandem for deciphering host-pathogen interactions and advancing TB research (Cronan & Tobin, 2014; Meijer, 2016; Ramakrishnan, 2013). Both larvae and adult zebrafish can be infected with *Mmar* using different (micro) injection techniques (Benard et al., 2012; Saralahti et al., 2020). Adult zebrafish mount a full adaptive immune response and infection with *M. marinum* leads to the formation of tuberculous granulomas of similar structure as in human TB. Therefore, the adult zebrafish-*Mmar* model is well-appreciated for the study of latency and reactivation of the disease, a process leading to the active spreading of the bacteria and the appearance of symptoms of active TB in humans (Parikka et al., 2012). On the contrary, zebrafish larvae are suitable for the study of the early infection stages in the context of innate immunity, as the adaptive immune system only becomes fully functional 4 weeks post-fertilization (Masud et al., 2017). Moreover, the infection is tractable on a single cell level in the optically transparent larvae, allowing the *in vivo* application of advanced imaging techniques (Munoz-Sanchez et al., 2020; Rosowski, 2020b). Together, larval and adult zebrafish TB models have proven to be very useful for mechanistic molecular studies but also for drug research and vaccine development (Dalton et al., 2017; Saralahti et al., 2020).

The use of zebrafish has contributed not only to advance TB pathogenesis research but also to change long-standing dogmas within the TB field (Ramakrishnan, 2020). Recapitulating *Mtb* infection in humans, during the early phase of infection *Mmar* interacts with zebrafish innate immune cells (Davis et al., 2002). The role of phagocytes and their response to the invading pathogen is known to determine the fate of the infection. Zebrafish macrophages efficiently engulf the invading bacteria as do their human counterparts.

Starting from a single infected cell, bacteria can be eliminated by host defenses or disseminated inside migrating phagocytes (Clay et al., 2007). The dissemination of the pathogen allows the formation of new infection foci that can lead to the persistence of the infection and the development of the typical granulomatous structures (Davis & Ramakrishnan, 2009). In the following sections, we will discuss how the zebrafish and its toolbox have contributed to the understanding of mycobacterial pathogenicity, and how there is still potential for the development of new tools that will expand the understanding of host-pathogen interactions.

## 2 | UNDERSTANDING THE INTRACELLULAR STAGES OF MYCOBACTERIAL INFECTION

A major advantage of using zebrafish larvae as a model system is that it enables subcellular imaging of infected phagocytes in a living host. *In vivo* imaging of how phagocytes respond to mycobacterial parasitism has been achieved label-free using differential interference contrast microscopy (e.g., Davis et al., 2002) and by fluorescent labeling using various dyes (as also commonly used in cell culture studies), and a growing collection of transgenic zebrafish lines that fluorescently label subcellular compartments or signaling proteins (e.g., Rosowski, 2020a, 2020b). Here, we illustrate these approaches with recent examples of *Mmar* infection studies.

Mycobacteria employ a mixture of two main virulence strategies to replicate inside their host cells. The first is that they are able to reside inside the phagosome by inhibiting its maturation and fusion with lysosomes, and can resist acidic pH even if the phagolysosomal pathway does progress (Gouzy et al., 2021; Levitte et al., 2016). The second is that they are able to gain access to the cytosol by permeabilizing the phagosomal membrane, which requires the mycobacterial type VII secretion system, ESX-1, encoded in the conserved RD1 virulence locus (Houben et al., 2012). The latter virulence strategy implies that mycobacteria have to be able to defend themselves at least to some extent against the primary defense mechanism in the cytosol, which is autophagy (Deretic et al., 2013). The capture of cytosolic *Mmar* by autophagic vesicles has been visualized by imaging of infection in GFP-Lc3 transgenic zebrafish (Hosseini et al., 2014). Like endogenous Lc3, the GFP-tagged protein is conjugated to the inner and outer membrane of nascent autophagosomes and this fluorescent signal remains detectable until the autophagosomal cargo is delivered to lysosomes (He et al., 2009). The analysis of GFP-Lc3 dynamics can be combined with LysoTracker dye to detect lysosomal acidification. This approach was used to study loss-of-function mutants of several autophagy-related genes, *sqstm1* (*p62*), *optn*, and *dram1*, demonstrating their requirement for the autophagic defense response (van der Vaart et al., 2014; Zhang et al., 2019, 2020). Notably, overexpressing these genes by mRNA injection enhanced the GFP-Lc3 response and the lysosomal delivery of *Mmar*, as well as the overall resistance of zebrafish larvae to the infection (van

der Vaart et al., 2014; Zhang et al., 2019). These studies suggest autophagy activation as a possible therapeutic strategy against mycobacterial infections (Munoz-Sanchez et al., 2020).

Breaching the boundary between the phagosome and cytosol not only triggers autophagy but also activates inflammasome signaling pathways that mediate interleukin 1 secretion and may culminate in pyroptotic cell death (Varela et al., 2019). Inflammasome pathway components are highly conserved in vertebrates, including zebrafish (reviewed in Forn-Cuni et al., 2019). The most extensively studied inflammasome in mammals, the NLR family pyrin domain containing 3 (NLRP3) inflammasome, has recently been found to be fully functional in zebrafish (Li et al., 2020). Interestingly, *Mtb* has evolved mechanisms to manipulate the activation of the NLRP3 inflammasome (Rastogi et al., 2021) but the conservation of this mechanism has yet to be studied in the *Mmar*-zebrafish infection model. Another constituent of a large subset of inflammasomes is an apoptosis-associated speck-like protein containing a CARD (Asc), which facilitates the formation of macromolecular complexes with pattern recognition receptors and inflammatory caspases (Forn-Cuni et al., 2019). Such macromolecular structures have been visualized in granulomas of *Mmar*-infected zebrafish larvae using an *asc:asc-gfp* transgenic zebrafish line (Forn-Cuni et al., 2019; Kuri et al., 2017). The Asc-dependent inflammasome pathway restricts intracellular mycobacterial growth and limits granuloma expansion in this model, while Asc-independent inflammasome signaling exacerbates inflammation and mycobacterial growth (Varela et al., 2019). Therefore, *Mmar* infection in zebrafish larvae provides a useful model system to unravel the triggers of different inflammasome pathways and to dissect their host-protective versus host-detrimental effects.

Proinflammatory macrophages release ATP into the extracellular space as a cell-to-cell communication mechanism, which is mediated by purinergic receptors like P2X7 and triggers transient intracellular calcium signals (Zumerle et al., 2019). Macrophage calcium dynamics was recently imaged during *Mmar* infection in vivo, using a zebrafish transgenic line with a genetically encoded calcium indicator, GCaMP6F, under control of the macrophage-specific *mfap4* promoter (Matty et al., 2019). This study identified a drug, clemastine, that potentiates the P2X7 receptor, thereby modulating the calcium signals and increasing host resistance to infection. This host-mediated anti-mycobacterial drug effect is independent of autophagy and requires the function of the inflammasome component, Asc. Calcium signals are also involved in oxidative stress and necrosis. These stress-related calcium signals were investigated in zebrafish larvae that are hypersusceptible to *Mmar* infection due to overexpression of *tnfa* (Roca et al., 2019). Two approaches were used to demonstrate mitochondrial  $\text{Ca}^{2+}$  overload in these animals: mitochondria-specific expression of a calcium indicator (GCaMP3) and administration of a fluorescent chemical probe for calcium (Rhod-2), accumulating in mitochondria. The in vivo application of these tools in zebrafish facilitated the identification of host-directed drugs limiting the mitochondrial

calcium overload and associated necrosis that occurs under excess production of Tnfa (Roca et al., 2019).

### 3 | DECIPHERING THE RELATIVE CONTRIBUTION OF MACROPHAGES AND NEUTROPHILS TO PATHOGENESIS

When it comes to fighting infections, macrophages and neutrophils are the first responders of the innate immune system. Their main functions are to control the infection by taking up the pathogenic invaders and orchestrating the response of other immune cells. The application of fluorescent microscopy techniques and genetic cell ablation technologies has facilitated the dissection of the relative contribution of macrophages and neutrophils after mycobacterial systemic infection in zebrafish larvae. In the zebrafish embryo, macrophages and neutrophils are the first immune cell to develop, as early as 22 and 33 hr post-fertilization, respectively (Masud et al., 2017). This characteristic makes the zebrafish larvae model unique for intravital studies regarding host-pathogen interactions.

Early infection events have been analyzed using the zebrafish larvae-*Mmar* model in combination with transgenic zebrafish lines carrying fluorescent macrophages and neutrophils (Rosowski, 2020a). Several studies have shown that the initial interactions between *Mmar* and macrophages occur quickly at the site of infection (Davis et al., 2002; Davis & Ramakrishnan, 2009). Macrophages are the first immune cell to arrive at the site of infection and to phagocytose the invading pathogen (Clay et al., 2007). In contrast, the use of a transgenic line-carrying fluorescent neutrophils has shown that neutrophils are recruited to the initial infection sites but rarely interact with *Mmar* (Yang et al., 2012). As occurs during *Mtb* infection, neutrophils do not phagocytose extracellular bacteria even though they are attracted to the site of infection (Clay et al., 2007; Pedrosa et al., 2000; Yang et al., 2012). However, neutrophils appear to be important for cross-talk with macrophages and they exert protection during *Mmar* infection in zebrafish by reactive oxygen and nitrogen defense mechanisms (Elks et al., 2013; Yang et al., 2012). This protective role of neutrophils has been associated with the phagocytosis of dead infected macrophages (Yang et al., 2012).

Different signaling pathways seem to contribute to the pathogenesis of the disease but special attention has been put into unravel the role of macrophages and neutrophils in regulating the inflammatory response during *Mmar* infection. The use of fluorescent reporter lines has shed light on the in situ transcriptional activation of host inflammatory factors such as *Il1b* and *Tnfa*. In agreement with the well-known role of inflammatory mediators during mycobacterium infection, both *il1b:GFP* and *tnfa:GFP* are transcriptionally up-regulated in infected macrophages early during *Mmar* infection in zebrafish larvae (Lewis & Elks, 2019; Ogryzko et al., 2019). On the contrary, in situ detection of the activity of reactive nitrogen species using whole-mount immunostaining, has stressed the importance

of surrounding neutrophils in the regulation of the inflammatory response through the hypoxia-inducible factor-1 $\alpha$  (Hif-1 $\alpha$ ) signaling pathway and their implication in the oxidative killing of the pathogen (Elks et al., 2013; Ogryzko et al., 2019). Constitutive activation of Hif-1 $\alpha$  has been found to enhance the protective abilities of neutrophils (Elks et al., 2013). Interestingly, this effect was retained in a comorbid setting that combined *Mmar* infection with injury-induced inflammation, supporting the potential of intervening with hypoxia signaling as a host-directed TB therapy (Oehlers et al., 2020; Schild et al., 2020).

In addition to fluorescent transgenic zebrafish lines, several cell ablation tools are available for specific cell depletion in zebrafish (Rosowski, 2020a). Ablation tools rely principally on genetic modifications or toxic effects on specific cells with different possibilities regarding spatial and/or temporal modulation of the ablation. Genetic ablation mediated by antisense oligonucleotide morpholinos targeting specific cell differentiation pathways, such as Pu.1 or Irf8, has been extensively used over the years in zebrafish (Rosowski, 2020a). Due to the lack of macrophages, *pu.1* morphants show increased *Mmar* growth but less tissue dissemination suggesting the importance of macrophages as propagators of the infection (Clay et al., 2007). In agreement, *irf8* morphants and adult *csf1r* mutant zebrafish, both presenting also a deficiency in macrophages, are hypersusceptible to *Mmar* as a result of the necrosis induced in granulomas due to the depletion of the macrophage supply (Pagan et al., 2015). The importance of neutrophils during *Mmar* infection has been shown with a neutropenic zebrafish line due to mutation of warts, hypo-gammaglobulinemia, infections, and myelokathexis (WHIM), which presented an increased susceptibility to the infection due to impaired neutrophil migration (Yang et al., 2012).

In summary, results in zebrafish have shown that the presence of both phagocytes is necessary for an efficient host response against *Mmar*, but the protective role of neutrophils seems not directly linked to the phagocytosis of the pathogen, in contrast to the role of the macrophages, which limit *Mmar* growth to some degree but are also exploited by the pathogen for replication and dissemination.

#### 4 | NEW INSIGHTS INTO PHAGOCYTE MIGRATION AND DISSEMINATION OF MYCOBACTERIAL INFECTION

The migration of phagocytes is orchestrated by chemokine signaling axes, which are generally well conserved between humans and zebrafish (Sommer et al., 2020b). The zebrafish homologs of the human CCR2 chemokine receptor and its ligand CCL2 were shown to play an important role in establishing the initial infection. Injecting *Mmar* into the hindbrain ventricle revealed that tissue-resident macrophages are the first responders to the infection, followed by recruitment of monocytes from the circulation (Cambier et al., 2017). While the resident macrophages display anti-bacterial activity, the

monocytes are permissive to *Mmar* growth, and their recruitment is mediated by the Ccr2 receptor (Cambier et al., 2014). Expression of the Ccl2 ligand is induced by a Sting-dependent signaling pathway in resident macrophages, in response to phenolic glycolipid found on the surface of *Mmar* and other pathogenic mycobacteria (Cambier et al., 2017). *Mmar* bacteria are then transferred by cell fusion events from the resident macrophages to the recruited population of Ccr2-expressing monocytes. These studies in zebrafish have highlighted a CCR2-CLL2-mediated interaction between phagocyte subsets proposed to be critical for establishing persistent infection also in human TB patients (Cambier et al., 2017).

The homologs of three members of the human CXCR family, CXCR2, CXCR3, and CXCR4, have also been studied in the context of *Mmar* infection in zebrafish larvae. Cxcr2 mediates the migration of neutrophils toward the chemokines Cxcl8a/II8 and Cxcl18b. Imaging of *cxcl18b:gfp* transgenic zebrafish larvae revealed that *cxcl18b* expression is induced in uninfected stroma cells of granulomas and not detectable in the infected phagocytes (Torraca et al., 2017a). Consequently, Cxcr2-Cxcl18b signaling could aid host defense by mediating the recruitment of neutrophils, but in the same manner, it might also contribute to pathological inflammation in the granuloma.

The Cxcr3-Cxcl11 axis has been shown to control multiple aspects of macrophage function during infection. The expression of one of the *cxcl11* family genes, *cxcl11.1* (*cxcl11aa*) is strongly up-regulated in *Mmar*-infected macrophages (Rougeot et al., 2019). Cxcl11aa signals through Cxcr3.2, the activity of which is antagonized by Cxcr3.3, an atypical receptor lacking the motif required for G-protein interaction (Sommer et al., 2020a). The opposite phenotypes of *cxcr3.2* and *cxcr3.3* loss-of-function mutants indicate that Cxcr3.2 signaling exacerbates infection by promoting the tissue dissemination of infected macrophages and granuloma formation, while Cxcr3.3 attenuates these effects (Sommer et al., 2020a; Torraca et al., 2015). Furthermore, live imaging of *cxcr3.2*-deficient macrophages showed that their aberrant migration is linked to an increase of the lysosomal compartment, which augments the antimycobacterial capacity (Sommer et al., 2021). The adverse effects of Cxcr3.2 signaling on host resistance to *Mmar* are in line with increased *Mtb* infection pathology observed in CXCR3-deficient mice (Chakravarty et al., 2007; Seiler et al., 2003).

Similar to Cxcr3.2, also the Cxcr4b receptor promotes *Mmar* pathogenesis, as it supports the vascularization of granulomas (Torraca et al., 2017b). Mechanistically, Cxcr4b-Cxcl12a signaling is hypothesized to facilitate vascularization through macrophage-mediated anastomosis downstream of Vegf signaling. This pathway could be a possible target for anti-angiogenic tuberculosis therapy, in line with the therapeutic effects of angiogenesis inhibitors that were previously demonstrated in zebrafish (Oehlers et al., 2015). However, it must be considered that the Cxcr4b-Cxcl12a axis has also been implicated in the recruitment of neutrophils that exert protection (Wright et al., 2021). This activity of the Cxcr4b-Cxcl12a axis is normally suppressed due to the expression of a microRNA, miR-206, in the host, which is induced by pathogenic mycobacteria

(Wright et al., 2021). Therefore, the therapeutic potential of modulating this chemokine axis requires further investigation.

All in all, owing to the powerful combination of genetics and in vivo imaging, studies in zebrafish have revealed that chemotactic processes mediated by several CCR and CXCR receptors on phagocytes frequently promote mycobacterial pathogenesis rather than contribute to the host defense response, which highlights how virulent mycobacteria have evolved effective mechanisms to exploit both pathways.

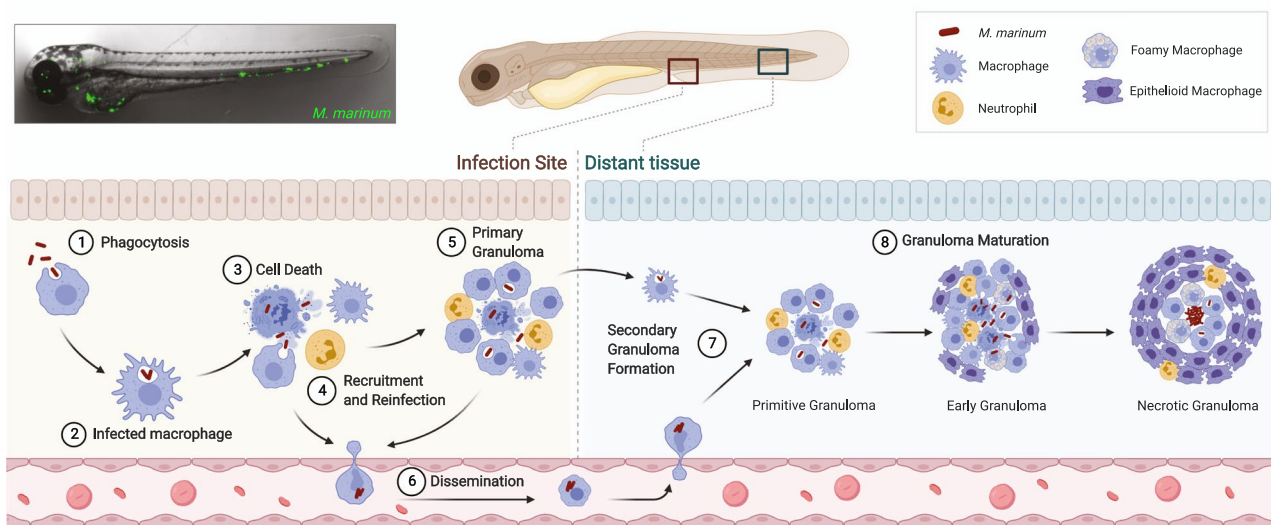
## 5 | LIFE AND DEATH INSIDE THE GRANULOMA

As pointed out in the previous sections, TB is characterized by the presence of granulomas. Granulomas are highly organized and compact aggregates of immune cells. The cell aggregates that form during *Mmar* infections of zebrafish larvae or adult fish recapitulate several aspects of granulomas in human TB, including the formation of a hypoxic and necrotic center (Figure 1) (Oehlers et al., 2015; Parikka et al., 2012; Ramakrishnan, 2013). Traditionally, granulomas have been associated with the presence of the adaptive immune system but research in zebrafish larvae showed that granulomas start to form in the context of only innate immunity (Davis et al., 2002). Furthermore, it can be observed in zebrafish larvae that infected macrophages egress from primary granulomas and seed secondary granulomas at distal sites (Figure 1) (Davis & Ramakrishnan, 2009). Importantly, opposite to the old vision of the granuloma as a host-protective structure, it has been revealed that pathogenic bacteria drive granuloma formation as a protective strategy against the host

immune system (Cronan et al., 2016; Davis & Ramakrishnan, 2009; Ramakrishnan, 2013).

The zebrafish model has been widely used to study structural aspects of granuloma. Investigations in zebrafish suggest that the vascularization process of the granuloma is induced by mycobacterial factors in concert with host chemokine signaling (Oehlers et al., 2015; Torraca et al., 2017b). In addition to this pro-angiogenic signaling, mycobacteria induce vascular permeability through the induction of angiopoietin-2 in macrophages and stromal cells (Oehlers et al., 2017). This process is conserved between zebrafish and humans and therefore a promising therapeutic target (Hortle & Oehlers, 2020). Moreover, as in human TB, the structural maturation of the granuloma is tightly ligated to the reprogramming of macrophages into epithelioid cells (Cronan et al., 2016, 2021). Macrophage epithelization was found to rely on Stat6-mediated signaling, and disruption of this signaling axis in macrophages inhibited the progression of granulomas into necrotizing structures (Cronan et al., 2021). Another important aspect of human TB granuloma maturation that is recapitulated in zebrafish larvae and adult fish is the differentiation of macrophages into foam cells (Johansen et al., 2018). Foamy macrophages are sources of nutrients for the invading pathogen and their appearance has been also shown to be driven by the ESX-1 bacterial secretion system as well as by host thrombocytes (Hortle et al., 2019; Johansen et al., 2018). The appearance of foamy cells within the granuloma is a well-characterized effect of chronic TB suggesting that zebrafish is a suitable model for studying the reactivation of the disease that can occur spontaneously but also experimentally induced by irradiation (Parikka et al., 2012).

Contrary to the idea that arises when referring to a compact cell structure, the application of imaging techniques in vivo in the



**FIGURE 1** Mycobacterial infection and granuloma formation in zebrafish larvae. After infection, *Mycobacterium marinum* is primarily phagocytosed by macrophages (1). Infected macrophages (2) undergo cell death (3). The release of cellular contents favors the recruitment of new cells that become infected (4) initiating the formation of primary granulomas (5) at the infection site. Egression of infected cells initiates the dissemination (6) of the infection through the blood circulation or tissues leading to the formation of secondary granulomas (7) in distant tissues. Granulomas undergo a maturation process (8) in which size and cell composition vary from primitive granulomas to early granulomas and necrotic granulomas. In adult zebrafish, granulomas contain additional immune cells such as T lymphocytes. Created with Biorender.com



zebrafish model has proven that granulomas are highly dynamic structures (Davis et al., 2002). A considerable number of the cell movements and rearrangements observed in granulomas are driven by cell death processes. Signals from dead or dying granuloma macrophages recruit neutrophils, which then phagocytose corpses of infected macrophages (Yang et al., 2012). Moreover, as the infection progresses in larvae and adult zebrafish models, cell death processes inside de granuloma lead to the formation of a necrotic core in which the bacteria reside (Parikka et al., 2012; Ramakrishnan, 2013).

Cell death is also known to play a fundamental role during the formation of primitive granulomas and the dissemination of the disease. At early stages of the infection, the necrotic death of infected macrophages helps the multiplication and dissemination of the pathogen (Volkman et al., 2010). Cycles of death of infected cells and reinfection of naïve macrophages are behind the initiation of the pathogenesis as they favor bacterial proliferation but also granuloma formation and expansion (Davis & Ramakrishnan, 2009). Different cell death modalities have been implicated in the progression of the disease in zebrafish. Inflammation activation and consequent pyroptotic cell death have been visualized in zebrafish larvae granulomas (Forn-Cuni et al., 2019; Varela et al., 2019). Moreover, Tnfa-mediated necrosis occurs in the presence of an excess of Tnfa in zebrafish larvae (Roca et al., 2019). Interestingly, although inflammation-mediated and Tnfa-mediated cell death processes are molecularly regulated in a different way by the host, the pathogen is known to manipulate them in order to favor its release from infected cells, thereby increasing the virulence of the disease (Roca et al., 2019; Varela et al., 2019).

Finally, it is expected that with the development and application of new molecular and microscopy techniques in combined with the existing live models but also with new culture techniques, such as the explant of mature granulomas (Cronan et al., 2018), the zebrafish model will further contribute to the understanding of this fascinating cellular structure.

## 6 | CONCLUDING REMARKS

It has been 20 years since it was first demonstrated that *Mmar* can induce granuloma formation in the context of innate immunity in zebrafish larvae (Davis et al., 2002). This study kicked off a wide use of this model system and inspired research questions that could not have been addressed in other animal models, such as how granulomas are initiated by an interplay of host and bacterial factors (Ramakrishnan, 2020). Not only can hallmarks of human TB be recapitulated by *Mmar* infection of zebrafish, also the nerve damage characteristic for leprosy could be modeled in zebrafish larvae, using a *Mmar* strain with modified surface lipids to resemble *Mycobacterium leprae* (Madigan et al., 2017). Furthermore, the zebrafish host is permissive to non-tuberculous human mycobacterial pathogens, like *Mycobacterium abscessus*, *Mycobacterium kansasii* and *Mycobacterium fortuitum*, all inducing granuloma formation in immunocompetent larvae and showing extensive extracellular cord formation in immunocompromised larvae (Bernut et al., 2016; Johansen & Kremer, 2020a, 2020b).

Further use of the different mycobacterial infection models would benefit from expanding the toolbox for precision genetic engineering and the collection of fluorescent marker lines. Cell-specific gene inactivation has long been a bottleneck but has now been achieved for both neutrophils and macrophages (Isiaku et al., 2021; Wang et al., 2021), and this technology provides great opportunities to analyze gene functions in a lineage-specific manner. Proinflammatory responses in macrophages can be visualized using *tnfa:gfp* and *ilb:gfp* transgenic lines (Lewis & Elks, 2019; Ogryzko et al., 2019), but the tools are still lacking to detect other polarization states that make monocytes and macrophages permissive to mycobacterial growth. Additionally, there is a need for vesicle markers to trace the intracellular trafficking of mycobacteria and for fluorescently tagged proteins to study the activation of innate immunity signaling mechanisms in real time. Novel optogenetic tools are now being applied in zebrafish disease models and this technology opens new possibilities also for infection research, enabling local and timed activation of factors at the host-pathogen interface (Asakawa et al., 2021; Formella et al., 2018; Shkarina et al., 2021). These and other technological advances will maximize the use of zebrafish as a model host and will drive research into the mechanisms of innate host defense and pathogen evasion strategies, the necessary basis for therapeutic innovations.

## ACKNOWLEDGMENTS

We gratefully acknowledge funding by the European H2020 Marie Skłodowska-Curie Intra-European Fellowship program (grant H2020-655424 to M.V.) and by the Dutch Research Council (Nederlandse Organisatie voor Wetenschappelijk Onderzoek, grant VI.Veni.192.151 to M.V.).

## CONFLICT OF INTEREST

The authors have no conflict of interest to declare.

## DATA AVAILABILITY STATEMENT

Data sharing not applicable—no new data generated.

## ORCID

Monica Varela  <https://orcid.org/0000-0003-0215-9173>

Annemarie H. Meijer  <https://orcid.org/0000-0002-1325-0725>

## REFERENCES

- Asakawa, K., Handa, H. & Kawakami, K. (2021) Illuminating ALS motor neurons with optogenetics in zebrafish. *Frontiers in Cell and Developmental Biology*, 9, 640414. <https://doi.org/10.3389/fcell.2021.640414>
- Benard, E.L., van der Sar, A.M., Ellett, F., Lieschke, G.J., Spaink, H.P. & Meijer, A.H. (2012) Infection of zebrafish embryos with intracellular bacterial pathogens. *Journal of Visualized Experiments*, (61), e3781. <https://doi.org/10.3791/3781>
- Bernut, A., Nguyen-Chi, M., Halloum, I., Herrmann, J.L., Lutfalla, G. & Kremer, L. (2016) *Mycobacterium abscessus*-induced granuloma formation is strictly dependent on TNF signaling and neutrophil trafficking. *PLoS Pathogens*, 12(11), e1005986. <https://doi.org/10.1371/journal.ppat.1005986>

- Cambier, C.J., O'Leary, S.M., O'Sullivan, M.P., Keane, J. & Ramakrishnan, L. (2017) Phenolic glycolipid facilitates mycobacterial escape from microbicidal tissue-resident macrophages. *Immunity*, 47(3), 552–565.e4. <https://doi.org/10.1016/j.immuni.2017.08.003>
- Cambier, C.J., Takaki, K.K., Larson, R.P., Hernandez, R.E., Tobin, D.M., Urdahl, K.B. et al. (2014) Mycobacteria manipulate macrophage recruitment through coordinated use of membrane lipids. *Nature*, 505(7482), 218–222. <https://doi.org/10.1038/nature12799>
- Chakravarty, S.D., Xu, J., Lu, B., Gerard, C., Flynn, J. & Chan, J. (2007) The chemokine receptor CXCR3 attenuates the control of chronic *Mycobacterium tuberculosis* infection in BALB/c mice. *The Journal of Immunology*, 178(3), 1723–1735. <https://doi.org/10.4049/jimmunol.178.3.1723>
- Clay, H., Davis, J.M., Beery, D., Huttenlocher, A., Lyons, S.E. & Ramakrishnan, L. (2007) Dichotomous role of the macrophage in early *Mycobacterium marinum* infection of the zebrafish. *Cell Host and Microbe*, 2(1), 29–39. <https://doi.org/10.1016/j.chom.2007.06.004>
- Cronan, M., Beerman, R., Rosenberg, A., Saelens, J., Johnson, M., Oehlers, S. et al. (2016) Macrophage epithelial reprogramming underlies mycobacterial granuloma formation and promotes infection. *Immunity*, 45(4), 861–876. <https://doi.org/10.1016/j.immuni.2016.09.014>
- Cronan, M.R., Hughes, E.J., Brewer, W.J., Viswanathan, G., Hunt, E.G., Singh, B. et al. (2021) A non-canonical type 2 immune response coordinates tuberculous granuloma formation and epithelialization. *Cell*, 184(7), 1757–1774.e14. <https://doi.org/10.1016/j.cell.2021.02.046>
- Cronan, M.R., Matty, M.A., Rosenberg, A.F., Blanc, L., Pyle, C.J., Espenschied, S.T. et al. (2018) An explant technique for high-resolution imaging and manipulation of mycobacterial granulomas. *Nature Methods*, 15(12), 1098–1107. <https://doi.org/10.1038/s41592-018-0215-8>
- Cronan, M.R. & Tobin, D.M. (2014) Fit for consumption: zebrafish as a model for tuberculosis. *Disease Models and Mechanisms*, 7(7), 777–784. <https://doi.org/10.1242/dmm.016089>
- Dalton, J.P., Uy, B., Okuda, K.S., Hall, C.J., Denny, W.A., Crosier, P.S. et al. (2017) Screening of anti-mycobacterial compounds in a naturally infected zebrafish larvae model. *Journal of Antimicrobial Chemotherapy*, 72(2), 421–427. <https://doi.org/10.1093/jac/dkw421>
- Davis, J.M., Clay, H., Lewis, J.L., Ghori, N., Herbomel, P. & Ramakrishnan, L. (2002) Real-time visualization of mycobacterium-macrophage interactions leading to initiation of granuloma formation in zebrafish embryos. *Immunity*, 17(6), 693–702. [https://doi.org/10.1016/S1074-7613\(02\)00475-2](https://doi.org/10.1016/S1074-7613(02)00475-2)
- Davis, J.M. & Ramakrishnan, L. (2009) The role of the granuloma in expansion and dissemination of early tuberculous infection. *Cell*, 136(1), 37–49. <https://doi.org/10.1016/j.cell.2008.11.014>
- Deretic, V., Saitoh, T. & Akira, S. (2013) Autophagy in infection, inflammation and immunity. *Nature Reviews Immunology*, 13(10), 722–737. <https://doi.org/10.1038/nri3532>
- Elks, P.M., Brizee, S., van der Vaart, M., Walmsley, S.R., van Eeden, F.J., Renshaw, S.A. et al. (2013) Hypoxia inducible factor signaling modulates susceptibility to mycobacterial infection via a nitric oxide dependent mechanism. *PLoS Pathogens*, 9(12), e1003789. <https://doi.org/10.1371/journal.ppat.1003789>
- Formella, I., Svahn, A.J., Radford, R.A.W., Don, E.K., Cole, N.J., Hogan, A. et al. (2018) Real-time visualization of oxidative stress-mediated neurodegeneration of individual spinal motor neurons in vivo. *Redox Biology*, 19, 226–234. <https://doi.org/10.1016/j.redox.2018.08.011>
- Forn-Cuni, G., Meijer, A.H. & Varela, M. (2019) Zebrafish in inflammation research. *Cells*, 8(8), 901. <https://doi.org/10.3390/cells8080901>
- Gouzy, A., Healy, C., Black, K.A., Rhee, K.Y. & Ehrst, S. (2021) Growth of *Mycobacterium tuberculosis* at acidic pH depends on lipid assimilation and is accompanied by reduced GAPDH activity. *Proceedings of the National Academy of Sciences of the United States of America*, 118(32), <https://doi.org/10.1073/pnas.2024571118>
- He, C., Bartholomew, C.R., Zhou, W. & Klionsky, D.J. (2009) Assaying autophagic activity in transgenic GFP-Lc3 and GFP-Gabarap zebrafish embryos. *Autophagy*, 5(4), 520–526. <https://doi.org/10.4161/auto.5.4.7768>
- Hortle, E., Johnson, K.E., Johansen, M.D., Nguyen, T., Shavit, J.A., Britton, W.J. et al. (2019) Thrombocyte inhibition restores protective immunity to mycobacterial infection in zebrafish. *Journal of Infectious Diseases*, 220(3), 524–534. <https://doi.org/10.1093/infdis/jiz110>
- Hortle, E. & Oehlers, S.H. (2020) Host-directed therapies targeting the tuberculosis granuloma stroma. *Pathogens and Disease*, 78(2), ftaa015. <https://doi.org/10.1093/femspd/ftaa015>
- Hosseini, R., Lamers, G.E., Hodzic, Z., Meijer, A.H., Schaaf, M.J. & Spink, H.P. (2014) Correlative light and electron microscopy imaging of autophagy in a zebrafish infection model. *Autophagy*, 10(10), 1844–1857. <https://doi.org/10.4161/auto.29992>
- Houben, D., Demangel, C., van Ingen, J., Perez, J., Baldeón, L., Abdallah, A.M. et al. (2012) ESX-1-mediated translocation to the cytosol controls virulence of mycobacteria. *Cellular Microbiology*, 14(8), 1287–1298. <https://doi.org/10.1111/j.1462-5822.2012.01799.x>
- Houben, E.N., Nguyen, L. & Pieters, J. (2006) Interaction of pathogenic mycobacteria with the host immune system. *Current Opinion in Microbiology*, 9(1), 76–85. <https://doi.org/10.1016/j.mib.2005.12.014>
- Isiaku, A.I., Zhang, Z., Pazhakh, V., Manley, H.R., Thompson, E.R., Fox, L.C. et al. (2021) Transient, flexible gene editing in zebrafish neutrophils and macrophages for determination of cell-autonomous functions. *Disease Models and Mechanisms*, 14(7), dmm047431. <https://doi.org/10.1242/dmm.047431>
- Johansen, M.D., Kasparian, J.A., Hortle, E., Britton, W.J., Purdie, A.C. & Oehlers, S.H. (2018) *Mycobacterium marinum* infection drives foam cell differentiation in zebrafish infection models. *Developmental and Comparative Immunology*, 88, 169–172. <https://doi.org/10.1016/j.dci.2018.07.022>
- Johansen, M.D. & Kremer, L. (2020a) CFTR depletion confers hypersusceptibility to *Mycobacterium fortuitum* in a zebrafish model. *Frontiers in Cellular and Infection Microbiology*, 10, 357. <https://doi.org/10.3389/fcimb.2020.00357>
- Johansen, M.D. & Kremer, L. (2020b) Large extracellular cord formation in a zebrafish model of *Mycobacterium kansasii* infection. *Journal of Infectious Diseases*, 222(6), 1046–1050. <https://doi.org/10.1093/infdis/jiaa187>
- Kilinc, G., Saris, A., Ottenhoff, T.H.M. & Haks, M.C. (2021) Host-directed therapy to combat mycobacterial infections. *Immunological Reviews*, 301(1), 62–83. <https://doi.org/10.1111/imr.12951>
- Kuri, P., Schieber, N.L., Thumberger, T., Wittbrodt, J., Schwab, Y. & Leptin, M. (2017) Dynamics of in vivo ASC speck formation. *Journal of Cell Biology*, 216(9), 2891–2909. <https://doi.org/10.1083/jcb.201703103>
- Levitte, S., Adams, K.N., Berg, R.D., Cosma, C.L., Urdahl, K.B. & Ramakrishnan, L. (2016) Mycobacterial acid tolerance enables phagolysosomal survival and establishment of tuberculous infection in vivo. *Cell Host and Microbe*, 20(2), 250–258. <https://doi.org/10.1016/j.chom.2016.07.007>
- Lewis, A. & Elks, P.M. (2019) Hypoxia induces macrophage tnfa expression via cyclooxygenase and prostaglandin E2 in vivo. *Frontiers in Immunology*, 10, 2321. <https://doi.org/10.3389/fimmu.2019.02321>
- Li, J.Y., Wang, Y.Y., Shao, T., Fan, D.D., Lin, A.F., Xiang, L.X. et al. (2020) The zebrafish NLRP3 inflammasome has functional roles in ASC-dependent interleukin-1beta maturation and gasdermin E-mediated pyroptosis. *Journal of Biological Chemistry*, 295(4), 1120–1141. <https://doi.org/10.1074/jbc.RA119.011751>
- Madigan, C.A., Cambier, C.J., Kelly-Scumpia, K.M., Scumpia, P.O., Cheng, T.-Y., Zailaa, J. et al. (2017) A macrophage response to

- Mycobacterium leprae* phenolic glycolipid initiates nerve damage in leprosy. *Cell*, 170(5), 973–985.e10. <https://doi.org/10.1016/j.cell.2017.07.030>
- Masud, S., Torraca, V. & Meijer, A.H. (2017) Modeling infectious diseases in the context of a developing immune system. *Current Topics in Developmental Biology*, 124, 277–329. <https://doi.org/10.1016/bs.ctdb.2016.10.006>
- Matty, M.A., Knudsen, D.R., Walton, E.M., Beerman, R.W., Cronan, M.R., Pyle, C.J. et al. (2019) Potentiation of P2RX7 as a host-directed strategy for control of mycobacterial infection. *eLife*, 8, e39123. <https://doi.org/10.7554/eLife.39123>
- Meijer, A.H. (2016) Protection and pathology in TB: learning from the zebrafish model. *Seminars in Immunopathology*, 38(2), 261–273. <https://doi.org/10.1007/s00281-015-0522-4>
- Meijer, A.H. & Spaik, H.P. (2011) Host-pathogen interactions made transparent with the zebrafish model. *Current Drug Targets*, 12(7), 1000–1017.
- Munoz-Sanchez, S., van der Vaart, M. & Meijer, A.H. (2020) Autophagy and Lc3-associated phagocytosis in zebrafish models of bacterial infections. *Cells*, 9(11), 2372. <https://doi.org/10.3390/cells9112372>
- Oehlers, S.H., Cronan, M.R., Beerman, R.W., Johnson, M.G., Huang, J., Kontos, C.D. et al. (2017) Infection-induced vascular permeability aids mycobacterial growth. *Journal of Infectious Diseases*, 215(5), 813–817. <https://doi.org/10.1093/infdis/jiw355>
- Oehlers, S.H., Cronan, M.R., Scott, N.R., Thomas, M.I., Okuda, K.S., Walton, E.M. et al. (2015) Interception of host angiogenic signalling limits mycobacterial growth. *Nature*, 517(7536), 612–615. <https://doi.org/10.1038/nature13967>
- Oehlers, S.H., Hortle, E. & Cook, K.M. (2020) A zebrafish model of tuberculosis comorbidity and the effects of HIF-activating intervention. *FEBS Journal*, 287(18), 3917–3920. <https://doi.org/10.1111/febs.15463>
- Ogryzko, N.V., Lewis, A., Wilson, H.L., Meijer, A.H., Renshaw, S.A. & Elks, P.M. (2019) Hif-1alpha-induced expression of Il-1beta protects against mycobacterial infection in zebrafish. *The Journal of Immunology*, 202(2), 494–502. <https://doi.org/10.4049/jimmunol.1801139>
- Pagan, A.J. & Ramakrishnan, L. (2018) The formation and function of granulomas. *Annual Review of Immunology*, 36, 639–665. <https://doi.org/10.1146/annurev-immunol-032712-100022>
- Pagan, A.J., Yang, C.T., Cameron, J., Swaim, L.E., Ellett, F., Lieschke, G.J. et al. (2015) Myeloid growth factors promote resistance to mycobacterial infection by curtailing granuloma necrosis through macrophage replenishment. *Cell Host and Microbe*, 18(1), 15–26. <https://doi.org/10.1016/j.chom.2015.06.008>
- Parikka, M., Hammarén, M.M., Harjula, S.-K., Halfpenny, N.J.A., Oksanen, K.E., Lahtinen, M.J. et al. (2012) *Mycobacterium marinum* causes a latent infection that can be reactivated by gamma irradiation in adult zebrafish. *PLoS Pathogens*, 8(9), e1002944. <https://doi.org/10.1371/journal.ppat.1002944>
- Pedrosa, J., Saunders, B.M., Appelberg, R., Orme, I.M., Silva, M.T. & Cooper, A.M. (2000) Neutrophils play a protective nonphagocytic role in systemic *Mycobacterium tuberculosis* infection of mice. *Infection and Immunity*, 68(2), 577–583. <https://doi.org/10.1128/IAI.68.2.577-583.2000>
- Ramakrishnan, L. (2013) Looking within the zebrafish to understand the tuberculous granuloma. *Advances in Experimental Medicine and Biology*, 783, 251–266. [https://doi.org/10.1007/978-1-4614-6111-1\\_13](https://doi.org/10.1007/978-1-4614-6111-1_13)
- Ramakrishnan, L. (2020) *Mycobacterium tuberculosis* pathogenicity viewed through the lens of molecular Koch's postulates. *Current Opinion in Microbiology*, 54, 103–110. <https://doi.org/10.1016/j.mib.2020.01.011>
- Rastogi, S., Ellinwood, S., Augenreich, J., Mayer-Barber, K.D. & Briken, V. (2021) *Mycobacterium tuberculosis* inhibits the NLRP3 inflammasome activation via its phosphokinase PknF. *PLoS Pathogens*, 17(7), e1009712. <https://doi.org/10.1371/journal.ppat.1009712>
- Roca, F.J., Whitworth, L.J., Redmond, S., Jones, A.A. & Ramakrishnan, L. (2019) TNF induces pathogenic programmed macrophage necrosis in tuberculosis through a mitochondrial-lysosomal-endoplasmic reticulum circuit. *Cell*, 178(6), 1344–1361.e11. <https://doi.org/10.1016/j.cell.2019.08.004>
- Rosowski, E.E. (2020a) Determining macrophage versus neutrophil contributions to innate immunity using larval zebrafish. *Disease Models and Mechanisms*, 13(1), dmm041889. <https://doi.org/10.1242/dmm.041889>
- Rosowski, E.E. (2020b) Illuminating macrophage contributions to host-pathogen interactions in vivo: the power of zebrafish. *Infection and Immunity*, 88(7), e00906-19. <https://doi.org/10.1128/IAI.00906-19>
- Rougeot, J., Torraca, V., Zakrzewska, A., Kanwal, Z., Jansen, H.J., Sommer, F. et al. (2019) RNAseq profiling of leukocyte populations in zebrafish larvae reveals a cxcl11 chemokine gene as a marker of macrophage polarization during mycobacterial infection. *Frontiers in Immunology*, 10, 832. <https://doi.org/10.3389/fimmu.2019.00832>
- Saralahti, A.K., Uusi-Makela, M.I.E., Niskanen, M.T. & Ramet, M. (2020) Integrating fish models in tuberculosis vaccine development. *Disease Models and Mechanisms*, 13(8), dmm045716. <https://doi.org/10.1242/dmm.045716>
- Schild, Y., Mohamed, A., Wootton, E.J., Lewis, A. & Elks, P.M. (2020) Hif-1alpha stabilisation is protective against infection in zebrafish comorbid models. *FEBS Journal*, 287(18), 3925–3943. <https://doi.org/10.1111/febs.15433>
- Seiler, P., Aichele, P., Bandermann, S., Hauser, A., Lu, B., Gerard, N. et al. (2003) Early granuloma formation after aerosol *Mycobacterium tuberculosis* infection is regulated by neutrophils via CXCR3-signaling chemokines. *European Journal of Immunology*, 33(10), 2676–2686. <https://doi.org/10.1002/eji.200323956>
- Shkarina, K., Hasel de Carvalho, E., Carlos Santos, J., Leptin, M. & Broz, P. (2021) Optogenetic activators of apoptosis, necroptosis and pyroptosis for probing cell death dynamics and bystander cell responses. *bioRxiv*, 458313.
- Sommer, F., Torraca, V., Kamel, S.M., Lombardi, A. & Meijer, A.H. (2020a) Frontline Science: antagonism between regular and atypical Cxcr3 receptors regulates macrophage migration during infection and injury in zebrafish. *Journal of Leukocyte Biology*, 107(2), 185–203. <https://doi.org/10.1002/JLB.2HI0119-006R>
- Sommer, F., Torraca, V. & Meijer, A.H. (2020b) Chemokine receptors and phagocyte biology in zebrafish. *Frontiers in Immunology*, 11, 325. <https://doi.org/10.3389/fimmu.2020.00325>
- Sommer, F., Torraca, V., Xie, Y., In 't Veld, A.E., Willemsse, J. & Meijer, A.H. (2021) Disruption of Cxcr3 chemotactic signaling alters lysosomal function and renders macrophages more microbicidal. *Cell Reports*, 35(2), 109000. <https://doi.org/10.1016/j.celrep.2021.109000>
- Torraca, V., Cui, C., Boland, R., Bebelman, J.-P., van der Sar, A.M., Smit, M.J. et al. (2015) The CXCR3-CXCL11 signaling axis mediates macrophage recruitment and dissemination of mycobacterial infection. *Disease Models and Mechanisms*, 8(3), 253–269. <https://doi.org/10.1242/dmm.017756>
- Torraca, V., Otto, N.A., Tavakoli-Tameh, A. & Meijer, A.H. (2017a) The inflammatory chemokine Cxcl18b exerts neutrophil-specific chemotaxis via the promiscuous chemokine receptor Cxcr2 in zebrafish. *Developmental and Comparative Immunology*, 67, 57–65. <https://doi.org/10.1016/j.dci.2016.10.014>
- Torraca, V., Tulotta, C., Snaar-Jagalska, B.E. & Meijer, A.H. (2017b) The chemokine receptor CXCR4 promotes granuloma formation by sustaining a mycobacteria-induced angiogenesis programme. *Scientific Reports*, 7, 45061. <https://doi.org/10.1038/srep45061>
- van der Vaart, M., Korbee, C., Lamers, G., Tengeler, A., Hosseini, R., Haks, M.C. et al. (2014) The DNA damage-regulated autophagy modulator



- DRAM1 links mycobacterial recognition via TLR-MYD88 to autophagic defense. *Cell Host and Microbe*, 15(6), 753–767. <https://doi.org/10.1016/j.chom.2014.05.005>
- Varela, M., Figueras, A. & Novoa, B. (2017) Modelling viral infections using zebrafish: innate immune response and antiviral research. *Antiviral Research*, 139, 59–68. <https://doi.org/10.1016/j.antiviral.2016.12.013>
- Varela, M., van der Vaart, M., Groenewoud, A. & Meijer, A.H. (2019) Extracellular mycobacterial DNA drives disease progression by triggering Caspase-11-dependent pyroptosis of infected macrophages. *bioRxiv*, 514125. <https://doi.org/10.1101/514125>
- Volkman, H.E., Pozos, T.C., Zheng, J., Davis, J.M., Rawls, J.F. & Ramakrishnan, L. (2010) Tuberculous granuloma induction via interaction of a bacterial secreted protein with host epithelium. *Science*, 327(5964), 466–469. <https://doi.org/10.1126/science.1179663>
- Wang, Y., Hsu, A.Y., Walton, E.M., Park, S.J., Syahirah, R., Wang, T. et al. (2021) A robust and flexible CRISPR/Cas9-based system for neutrophil-specific gene inactivation in zebrafish. *Journal of Cell Science*, 134(8), jcs258574. <https://doi.org/10.1242/jcs.258574>
- Wright, K., de Silva, K., Plain, K.M., Purdie, A.C., Blair, T.A., Duggin, I.G. et al. (2021) Mycobacterial infection-induced miR-206 inhibits protective neutrophil recruitment via the CXCL12/CXCR4 signalling axis. *PLoS Pathogens*, 17(4), e1009186. <https://doi.org/10.1371/journal.ppat.1009186>
- Yang, C.T., Cambier, C.J., Davis, J.M., Hall, C.J., Crosier, P.S. & Ramakrishnan, L. (2012) Neutrophils exert protection in the early tuberculous granuloma by oxidative killing of mycobacteria phagocytosed from infected macrophages. *Cell Host and Microbe*, 12(3), 301–312. <https://doi.org/10.1016/j.chom.2012.07.009>
- Yang, H.J., Wang, D., Wen, X., Weiner, D.M. & Via, L.E. (2021) One size fits all? Not in in vivo modeling of tuberculosis chemotherapeutics. *Frontiers in Cellular and Infection Microbiology*, 11, 613149. <https://doi.org/10.3389/fcimb.2021.613149>
- Yoshida, N., Frickel, E.M. & Mostowy, S. (2017) Macrophage-microbe interactions: lessons from the zebrafish model. *Frontiers in Immunology*, 8, 1703. <https://doi.org/10.3389/fimmu.2017.01703>
- Zhang, R., Varela, M., Forn-Cuni, G., Torraca, V., van der Vaart, M. & Meijer, A.H. (2020) Deficiency in the autophagy modulator Dram1 exacerbates pyroptotic cell death of Mycobacteria-infected macrophages. *Cell Death and Disease*, 11(4), 277. <https://doi.org/10.1038/s41419-020-2477-1>
- Zhang, R., Varela, M., Vallentgoed, W., Forn-Cuni, G., van der Vaart, M. & Meijer, A.H. (2019) The selective autophagy receptors Optineurin and p62 are both required for zebrafish host resistance to mycobacterial infection. *PLoS Pathogens*, 15(2), e1007329. <https://doi.org/10.1371/journal.ppat.1007329>
- Zumerle, S., Cali, B., Munari, F., Angioni, R., Di Virgilio, F., Molon, B. et al. (2019) Intercellular calcium signaling induced by ATP potentiates macrophage phagocytosis. *Cell Reports*, 27(1), 1–10.e4. <https://doi.org/10.1016/j.celrep.2019.03.011>

**How to cite this article:** Varela, M. & Meijer, A.H. (2022) A fresh look at mycobacterial pathogenicity with the zebrafish host model. *Molecular Microbiology*, 117, 661–669. <https://doi.org/10.1111/mmi.14838>