

RESEARCH ARTICLE

A Novel CalB-Type Lipase Discovered by Fungal Genomes Mining

Maria E. Vaquero, Laura I. de Eugenio, Maria J. Martínez*, Jorge Barriuso*

Centro de Investigaciones Biológicas, Consejo Superior de Investigaciones Científicas, Ramiro de Maeztu 9, 28040 Madrid, Spain

* jbarriuso@cib.csic.es (JB); mjmartinez@cib.csic.es (MJM)



OPEN ACCESS

Citation: Vaquero ME, de Eugenio LI, Martínez MJ, Barriuso J (2015) A Novel CalB-Type Lipase Discovered by Fungal Genomes Mining. PLoS ONE 10(4): e0124882. doi:10.1371/journal.pone.0124882

Academic Editor: Junwen Wang, The University of Hong Kong, HONG KONG

Received: February 9, 2015

Accepted: March 18, 2015

Published: April 21, 2015

Copyright: © 2015 Vaquero et al. This is an open access article distributed under the terms of the [Creative Commons Attribution License](https://creativecommons.org/licenses/by/4.0/), which permits unrestricted use, distribution, and reproduction in any medium, provided the original author and source are credited.

Data Availability Statement: All relevant data are within the paper and its Supporting Information files.

Funding: This work was supported by the Spanish projects BIO2012-36372, RTC-2014-1777-3 and S2013/MAE-2907. J. Barriuso thanks the financial support from the JAE-DOC CSIC program. The funders had no role in study design, data collection and analysis, decision to publish, or preparation of the manuscript.

Competing Interests: The authors have declared that no competing interests exist.

Abstract

The fungus *Pseudozyma antarctica* produces a lipase (CalB) with broad substrate specificity, stability, high regio- and enantio-selectivity. It is active in non-aqueous organic solvents and at elevated temperatures. Hence, CalB is a robust biocatalyst for chemical conversions on an industrial scale. Here we report the *in silico* mining of public metagenomes and fungal genomes to discover novel lipases with high homology to CalB. The candidates were selected taking into account homology and conserved motifs criteria, as well as, phylogeny and 3D model analyses. The most promising candidate (PlicB) presented interesting structural properties. PlicB was expressed in a heterologous host, purified and partially characterized. Further experiments will allow finding novel catalytic properties with biotechnological interest.

Introduction

Carboxylester hydrolases (E.C. 3.1.1) are a group of enzymes which includes: esterases (E.C.3.1.1.1) defined by their ability of hydrolyze carboxyl esters from short chain acylglycerol and lipases (triacylglycerol lipase, E.C. 3.1.1.3) enzymes which are capable of releasing long-chain fatty acids from water-insoluble carboxylic esters[1]. Both enzymes are able to catalyze esterification and transesterification reactions in presence of organic solvents. The distinction between lipases and esterases is not clear. Several unsuccessful attempts aimed at differentiating “lipases” from “esterases” by using criteria such as primary sequence comparisons, structural features, and kinetic parameters have been analyzed[2].A single feature is not sufficient to differentiate esterases from lipases, and therefore, a new bio-physico-chemical classification of lipolytic enzymes was proposed [3].

These closely related enzymes are distributed among animals, plants and microorganism. One of the most important lipases used in biotechnological applications is CalB from the basidiomycete *Pseudozyma antarctica*, formerly known as *Candida antarctica* [4]. This yeast belongs to the *Ustilagomycetes* class, which includes the plant pathogen *Ustilago maydis*, where few lipases have been recently characterized [5, 6]. CalB shows broad substrate specificity, stability, and high regio- and enantio-selectivity. Moreover, it is active under conditions that are

unnatural to most other enzymes like in non-aqueous organic solvents and at elevated temperatures [7]. Hence, CalB is a robust biocatalyst for chemical conversions on an industrial scale [8].

Structurally, CalB belongs to the α/β hydrolase fold family, represented by a conserved core structure composed of seven central β strands, flanked on both sides by ten α -helices [7]. The fold presents a stable scaffold for the catalytic triad composed by Ser105, His224 and Asp 187, in nearly all lipases the residues around the nucleophile serine are highly conserved presenting the motif GXSXG; exceptions to this pattern are: TWSQG in CalB and AHSMG in lipase from *Saccharomyces cerevisiae* [9]. CalB presents a potential lid formed by helix α_5 , however, in contrast with other lipases, does not show interfacial activation [10].

Advances in DNA sequencing have allowed studying the genomes of an enormous number of organisms in a short time. As an example, the Joint Genome Institute (JGI) from the US department of energy (DOE) has more than 300 fungal genomes completed and available in its website (<http://www.jgi.doe.gov/>). Furthermore, the study of DNA directly sequenced from environmental samples is known as metagenomics. There are many metagenomes sequencing projects deposited in public databases, such as MG-RAST, IMG/M, and CAMERA [11]. Bioinformatics approaches to analyze these datasets allow the finding of new enzymes in the available DNA sequences [12].

In this work, we report the *in silico* mining of public fungal genomes to discover lipases with high homology to CalB. The candidates were selected taking into account homology and conserved motifs criteria, as well as, phylogeny and 3D model analyses. The most promising candidate was expressed in heterologous hosts, purified and its catalytic properties studied.

Materials and Methods

Screening and selection of candidate

To identify the conserved motifs in the sequences of the *P. antarctica* lipase B family (abH37.01) all sequences available in “The Lipase Engineering Database” [9] from this family were downloaded (<http://www.led.uni-stuttgart.de/>), and subjected to analysis using MEME software (<http://meme.sdsc.edu/meme/intro.html>). The only conserved amino acids sequence detected in all cases was WSQG, comprising the catalytic Ser from CalB [7, 9].

To look for the putative lipases containing the conserved motifs WSQG in the fungal genomes and environmental metagenomes, automatically predicted proteins from all 300 fungal genomes at the JGI web-site containing the terms “esterase” (26089 sequences) or “lipase” (16855 sequences) were downloaded using the Advanced Search option. Also, eighty-one nucleotide datasets from different metagenomes, selected from diverse environments to maximize genetic variability, were downloaded from the databases MG-RAST (<http://metagenomics.anl.gov/>) and IMG/M (<http://img.jgi.doe.gov>) (7 million assembled contigs, Barriuso and Martínez, 2014), and translated in the six possible reading frames to amino acid sequences. From the total pool of sequences, the ones containing the conserved motifs WSQG were selected using the Bioedit 7.1.3 software (32 hits). Alternatively, as a second screening strategy, protein similarity searches were performed at the JGI and the NCBI-NR databases using BLASTp algorithm (e value 10^{-2}) using CalB lipase as a query (29 hits).

Sequence and phylogenetic analysis

Candidate sequences were compared by means of BLASTp against the “The Lipase Engineering Data Project” (LED) databases; those belonging to the CalB-family were subjected to a phylogenetic analysis. Selected candidates were aligned using MUSCLE, and an un-rooted tree was created using Maximum-likelihood methods with a bootstrap of 2000 (MEGA6 software).

Structure modeling

Selected sequences were aligned versus CalB using ClustalW. Putative signal peptides were predicted using SignalP 4.0. N-glycosylation sites and disulphide bonds were predicted using NetNGlyc1.0 server and DiANNA 1.1 web server respectively. The three-dimensional structures of candidates were modeled on the SWISS-MODEL server in the automatic mode. The models were exhaustively analyzed using PyMol 1.1.

Cloning procedures and heterologous expression

DNA coding sequences for the mature protein of putative lipase gene from the *Plicaturopsis crispa* genome (JGI protein ID 57710) was codon optimized for its expression in *Escherichia coli* and *Komagataella* (= *Pichia pastoris*) and synthesized by ATG:biosynthetics (Merzhausen, Germany). The gene was cloned into the vectors pET28a(+) (Merck, Darmstadt, Germany), using *Nco*I and *Not*I sites, under the transcriptional control of the T7 promoter for its expression in *E. coli*. The pET28:PlicB construct was transformed into *E. coli* BL21(DE3)pLysS cells. Expression and solubility was checked by SDS-PAGE gels, using lysates from single colonies grown at 37°C in LB with kanamycin (50 µg/mL) and chloramphenicol (34 µg/mL) until optical density at 600 nm reached 0.6. Then, the cultures were induced with IPTG (1 mM), grown at 37°C or 16°C for 16 h, and harvested by centrifugation (6000 × g, 20 min, 4°C). Cell pellets were resuspended in 5 mL lysis buffer (10 mM Tris-HCl, pH 7), sonicated (Misonix S4000; Qsonica, Newtown, CT, USA), separated from the supernatant fraction, and checked for protein solubility using 10% polyacrylamide gels.

For expression in *P. pastoris*, *plicB* gene was cloned into pPIC9 vector (Invitrogen, Carlsbad, CA, USA) under the transcriptional control of the methanol-inducible AOX1 promoter, using *Eco*RI and *Not*I sites. The pPIC9:PlicB construct was transformed into *P. pastoris* KM71 and GS115 strains as described before [13]. Activity screening was performed using single colonies from the transformation plates grown in 20 mL YEPS medium in 100 mL flasks with 0.5% w/v of methanol to induce gene expression. The flasks were incubated at 28°C and 250 rpm and 0.5% w/v methanol was added daily for maintaining the induction. The esterase activity was checked using the lipase activity assay kit II (Sigma-Aldrich, Steinheim, Germany).

PlicB production, purification and characterization

Positive clones from *P. pastoris*, secreting PlicB were selected for protein production and purification. One liter flasks with 100 mL of YEPS medium, inoculated with 3.5 mL of overnight YPD cultures (DO_{600} 8–10), were incubated at 28°C and 250 rpm. When maximum activity was reached (4 days), the cells were harvested by centrifugation (6000 × g at 4°C) and the supernatant concentrated in 10000 MWCO Amicon-Ultra Centrifugal filters (Merck-Millipore, Darmstadt, Germany). Supernatant was equilibrated with 0.5 M ammonium sulfate in 20 mM Tris-HCl pH 7 buffer and applied to a Octyl-Sepharose cartridge (GE Healthcare Life Sciences, Uppsala, Sweden). Proteins were eluted with a linear decreasing gradient (0.5–0 M) of ammonium sulfate in the same buffer. Fractions containing lipase activity were concentrated, dialyzed and subjected to size exclusion chromatography in a HiLoad 16/600 Superdex 75 pg (GE Healthcare) column equilibrated and eluted with 20 mM Tris-HCl pH 7 buffer containing 0.15 M NaCl. Dextran blue (2000 kDa), Aprotinin (6.5 kDa), Ribonuclease A (13.7 kDa), Carbonic anhydrase (29 kDa), Ovalbumin (44 kDa) and Conalbumin (75 kDa), (Calibration kits; GE Healthcare), were used as standards to calibrate the column in order to evaluate PlicB quaternary structure.

The apparent molecular weight of the purified PlicB was estimated from SDS-PAGE. Precision Plus Protein Dual Color Standards (Bio-Rad, Hercules, CA, USA) were used in running 10% polyacrylamide gels. N-linked-carbohydrate content (%) was estimated as the difference

between the apparent molecular mass of the protein before and after deglycosylation with Endoglycosidase H (Roche, Mannheim, Germany). For N-deglycosylation, the purified protein was dialyzed against sodium citrate buffer, pH 5.5, and then incubated with Endo H at 37°C for 24 h, following the manufacturer's instructions. Protein concentration was determined by the Bradford (Bio-Rad), bovine serum albumin was used as standard [6].

Peptide mass fingerprinting using MALDI-TOF mass spectrometry

The purified protein was analyzed by SDS-PAGE in a 10% polyacrylamide gel and stained with SYPRO Ruby (Bio-Rad). The band was excised and subjected to tryptic in-gel digestion in a DigestPro MS digester (Intavis, Köln, Germany). MS analyses of the tryptic peptides were performed in an Autoflex III MALDI-TOF/TOF mass spectrometer (Bruker Daltonics, Bremen, Germany) controlled by the flexControl3.0 software (Bruker Daltonics). Three of the tryptic peptides were chosen to carry out fragmentation and sequencing. MALDI-MS and MS/MS data were combined through the BioTools 3.0 program (Bruker Daltonics) to search against the non-redundant protein database from the NCBI using the MASCOT 2.3 search engine (Matrix Science, London, UK). Scores greater than 75 were considered significant ($p < 0.05$).

Esterase and lipase activity assays

PlicB activity against triglycerides was tested in tributyrin agarose plates (1% agarose, 1% glyceryl tributyrate previously homogenized in 20 mM Tris-HCl pH 7 buffer). Twenty-five micrograms of purified protein were dropped onto the plates, followed by incubation at 28°C overnight. Alternately, plates with Tween20/40/80 substrates were used (1% agarose, 0.2% Tween 20/40/80 and 0.6 mM CaCl_2). Fifty micrograms of purified protein were dropped onto the plates followed by incubation at 28°C for 24–48 h. Fatty acids released from substrates produced a turbid halo. On the other hand, PlicB lipase activity was quantified spectrophotometrically using the Lipase activity assay kit II (Sigma-Aldrich), and compared with that from commercial non-immobilized CalB (lyophilized powder; Sigma-Aldrich).

The hydrolysis of *p*-nitrophenyl butyrate (*p*NPB), *p*-nitrophenyllaurate (*p*NPL) and *p*-nitrophenylpalmitate (*p*NPP) were assayed in presence of 1% (v/v) Genapol X-100 as surfactant, as described previously [13], using an Shimadzu UV-1800 spectrophotometer with magnetic stirring (600 rpm) and temperature control at 25°C. One unit of activity (1U) is defined as the amount of enzyme releasing 1 μmol of *p*-nitrophenol ($\epsilon_{410} = 15,200 \text{ M}^{-1}\text{cm}^{-1}$) per minute under the defined conditions.

pH and temperature stability

To determine the enzymes stability at different pHs, the enzyme were incubated in 10 mM Britton-Robinson buffer from pH 4 to 9 at 4°C. Samples were taken at 24h to calculate residual activity using the *p*NPB assay as describe above. The initial activity of the enzyme was taken as 100%. Thermal stability was determined by the temperature at which 50% of activity was lost in 10 min incubation (T_{50} value) the protein was incubated in 20 mM Tris-HCl pH 7 buffer at a range from 30 to 60°C, cooled on ice, and rewarmed to room temperature for 5 min prior to residual activity determination by Lipase activity assay kit II (Sigma-Aldrich).

Results and Discussion

Genomes and metagenomes screening

After the search of conserved sequence WSQG in 81 environmental metagenomes and putative proteins annotated as lipase and/or esterase in more than 300 fungal genomes, only 21 and 11

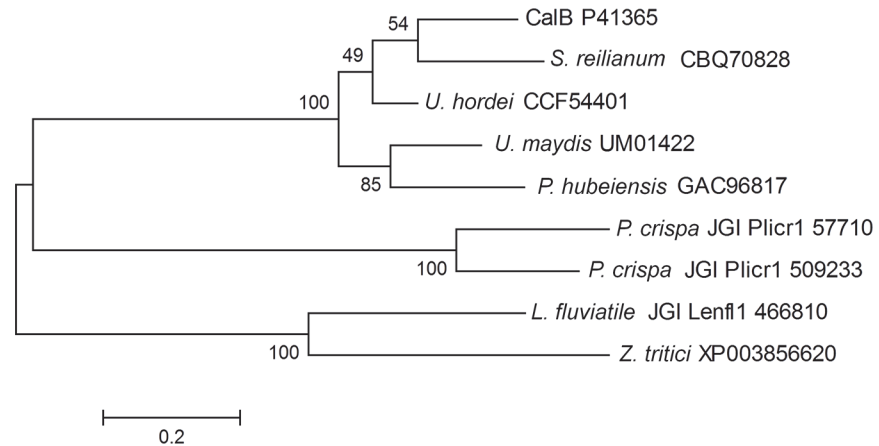


Fig 1. Phylogenetic analysis of CalB and eight potential CalB-like lipase candidates. The tree was built using MEGA6 software, bootstrap values (2000 replicates) are shown next to the branches. The name of the species is followed by the sequence accession number.

doi:10.1371/journal.pone.0124882.g001

candidates contained the motif, respectively. Moreover, analysis and comparison of these sequences in “The Lipase Engineering Database” retrieved no *C. antarctica* lipase B family members (abH37.01). In the case of candidates from metagenomes all belonged to bacteria; as previously reported the abundance of fungal sequences in this data sets it is very low [11].

Alternatively, a second strategy based on sequence homology search against JGI and NCBI nr databases using CalB as query rendered 29 sequences. After a deeper analysis of these sequences, 8 belonged to the abH37.01 family and were subjected to a phylogenetic study (Fig 1).

Interestingly, candidates from *P. crispa* and *Lentithecium fluviatile* only arise using the second search strategy. This is due to absence of the conserved WSQG motif in *P. crispa* sequences, and to the annotation of *L. fluviatile* sequence as an α/β -hydrolase instead of “lipase” or “esterase” in the database. In this sense it is worthy to mention the convenience of applying different search strategies to avoid the loss of potential candidates.

Lipase sequences from *Ustilago* and *Sporisorium*, Gramineae parasites closely related and commonly known as smut fungi [14], grouped in the same branch than CalB and lipases from the anamorphic yeast-like fungus *Pseudozyma*, that also belongs to the *Ustilaginales* [15]. Several of these lipases are protected by international patents due to its biotechnological potential interest [16], and lipase B from *U. maydis* (Uml2) has been recently characterized [6]. In a second cluster with a higher phylogenetic distance from CalB, grouped the putative lipases from the *Dothideomycetes*: *Zymoseptoria tritici* (ID XP003856620), a wheat pathogen [17] and *Lentithecium fluviatile* (JGI/Lenf1/ID 466810), from fresh water habitats.

Finally, lipases from the Agarical *Plicaturopsis crispa* (JGI/Plicr1/ID 57710 and 509233) grouped in a different branch at an intermediate phylogenetic distance between *Ustilaginales* and *Dothideomycetes*. Putative protein ID 509233 seems to be a truncated form of the putative protein ID 57710 presenting 70 amino acids less, probably due to a wrong automatic genome annotation. *P. crispa* is a white rot basidiomycete, and is the first member of the Amylocorticiales order to be sequenced [18]. This fungus is an effective decayer, colonizing predominantly dead branches of deciduous trees [17].

In this kind of fungi, secreted lipases may play a role for nutrition and/or damage of host cells to help penetrate host tissues. These enzymes may be implicated in the initial degradation of the epicuticular waxes and cuticle, which consist of a mixture of long-chain fatty acids, aldehydes, alkanes, primary and secondary alcohols, ketones and wax esters [19].

Sequence analysis and structural model

The putative lipase sequence PlicB from basidiomycete *P. crista* (protein ID 57710) was selected as the most promising candidate, since it was very similar to the characterized enzymes CalB and Uml2, but still presented some interesting differences. PlicB possess 367 amino acids with a theoretical mass of 37k Da and contains a predicted signal sequence of 19 amino acids. Mature PlicB presented 30% sequence identity and 44% similarity against CalB(Fig 2). Molecular models of the selected candidate were generated using SWISS-MODEL server in the automatic mode. Thetemplatechosen in all cases was the structure of CalB (PDB: 4k6h). The 3D model from PlicB adjusted with a Qmean value of -5.25 (S1 Fig).

Residues Ser122, Asp218 and His257 are probably responsible for the catalytic activity of the protein as they superpose in the model with the catalytic triad of CalB. It is worth to notice that PlicB was the only candidate found that did not presented the conserved motif WSQG forming the shoulder of the catalytic Ser. Instead of a tryptophan PlicB presented a tyrosine preceding the catalytic serine (Fig 2), similar to cutinases from *Fusarium solani* and *Aspergillus oryzae*[9]. The tryptophan in CalB seems not to be crucial as it is shown in the mutant W104A, which presents an expanded pocket with increase activity against alcohols [20].

Analyzing potential disulphide bonds, PlicB possesses two(Cys54-Cys94 and Cys-250-Cys293), one less than CalB and Uml2[6]. The overall structure of PlicB (S1 Fig) is a globular α/β -type protein with a central β -sheet composed of seven β -strands flanked by α -helices. CalB has a semi-covered active site consisting of α 5 (as the lid) and α 10 (as activation element), forming a narrow hydrophobic channel with the catalytic residues inside[21]. In PlicB model α 5 is replaced by a loopforming a cleft-like enzymatic cavity.

PlicB production, purification and characterization

Taking into account sequence and phylogenetic analysis, as well as the 3D molecular models, protein from *P. crista* ID 57710 was selected for heterologous expression. The mature sequence of *plicB* gene was expressed in *E. coli* and *P. pastoris*. In the first case, the protein obtained was insoluble, inactive and located inside inclusion bodies (Fig 3). The deposition of unfolded or partially misfolded protein is a common problem in this host, especially when expressing

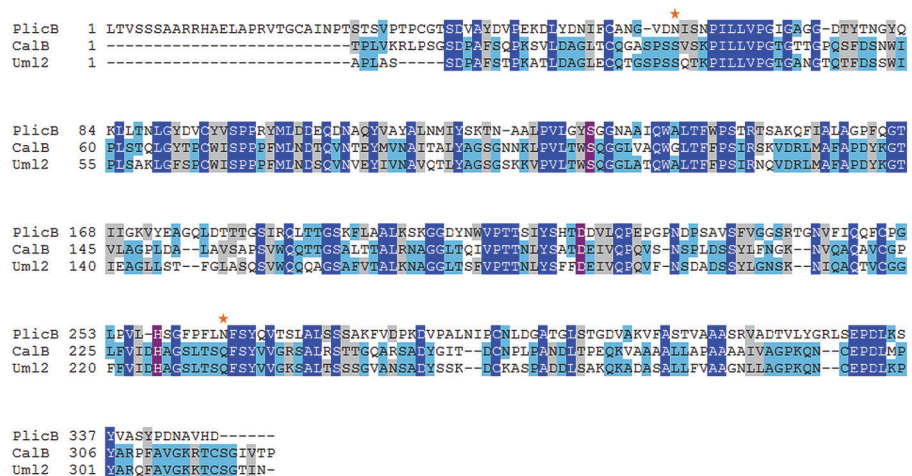


Fig 2. Protein sequences alignment of the mature regions of PlicB, CalB and Uml2. Residues completely conserved at a given position are indicated in white on blue. Putative catalytic residues are highlighted in white on purple. And potential N-glycosylation sites are marked by a star.

doi:10.1371/journal.pone.0124882.g002

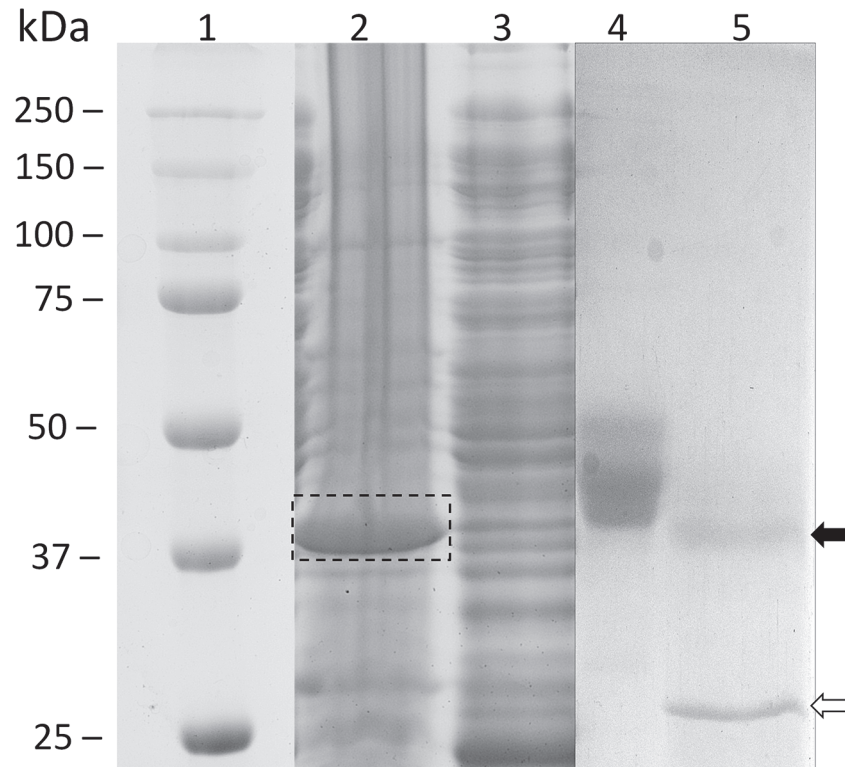


Fig 3. SDS-PAGE of PlcB expressed in *E. coli* and *P. pastoris*. Lane 1, molecular mass markers; lane 2–3 pellet and supernatant respectively, of crude extract from PlcB expressed in *E. coli* BL21(DE3)pLysS grown at 37°C. The dashed box indicates the insoluble expression of PlcB. Lane 4, purified PlcB expressed in *P. pastoris* GS115. Lane 5, purified PlcB expressed in *P. pastoris* after Endoglycosidase H treatment. The migration of deglycosylated PlcB (black arrow) and Endoglycosidase H (open arrow) are indicated.

doi:10.1371/journal.pone.0124882.g003

eukaryotic proteins [22]. On the other hand, *P. pastoris* resulted to be an optimum heterologous host for this kind of enzymes, as previously described [23]. Different *P. pastoris* strains were tested, and the best producer clone was obtained from strain GS115. Purification of PlcB was performed from methanol-induced cultures grown for 96h: culture supernatant was applied onto hydrophobic and size exclusion chromatography columns, yielded 4mg/L of purified protein of an estimated molecular mass of 48kDa (Fig 3), although its theoretical molecular mass was 37 kDa. After enzymatic deglycosylation of the protein by Endoglycosidase H treatment, a unique band of approximately 37kDa appeared as seen by SDS-PAGE, indicating a 20% of sugars N-linked (Fig 3), in accordance with the two N-glycosylation sites predicted (Asn60 and Asn264). The molecular weight of PlcB calculated by size exclusion chromatography using a HiLoad 16/600 Superdex 75 pg column was 47.8 kDa, very similar to that obtained under denaturing conditions in SDS-PAGE, which would indicate that PlcB is a monomer in the conditions tested, according to CalB previous results [24]. PlcB identity was confirmed by mass fingerprinting analysis (data not shown).

Lipase activity of purified enzyme was checked on tributyrin and Tween 20/40/80 plates (S2 Fig). Tween 20/40/80 are polysorbate detergents containing esters of fatty acids with different chain length: lauric acid, palmitic acid and oleic acid, respectively. Although the purified protein was able to hydrolyze all the substrates assayed, PlcB produced a more visible halo in Tween 40 compared to Tween 20 after overnight incubation, while the halo in Tween 80 plates appeared only after 48h incubation. This ability has already been shown in CalB and Uml2 [6].

PlicB lipase activity was quantified and compared to CalB by using a spectrophotometric approach (Lipase assay kit II, Sigma-Aldrich)(Table 1).By this method, PlicB showed 4-fold higher lipase activity compared to CalB. Esterase activity against *p*-nitrophenyl (*p*NP) esters of different fatty acids length chain (Table 1), revealed that PlicB presented higher activity towards short chain substrates as *p*-NPB (C4), than towards fatty acid esters of 12 and 16 carbons of acyl chain. Although CalB presented 43-fold higher activity than PlicB against *p*NPB and *p*NPL, hydrolysis of long chain *p*NPP by the two lipases was similar. Furthermore, Buerth et al. [6] compared the specific activity of Uml2 and CalB against *p*NP-esters in reactions containing DMSO (5% v/v) and 5mM deoxycholate. CalB resulted around 10 times more active towards *p*NPB and *p*NPL than Uml2, while the activity was similar against *p*NPP.

Inspection of the molecular surfaces of PlicB model and CalB revealed notable structural differences in the substrate binding pocket. CalB showed a funnel-like binding site able to accommodate large substrates [25, 26], while PlicB showed a cleft-like enzymatic cavity. Moreover, it has been suggested that α 5 helix in CalB possessed flexibility and interacts with the acyl part of a substrate[27]; in the case of PlicB this α 5 helix it is not present. Marked differences in lid regions among CalB homologues have previously been described. Substitution of CalB lid with that from related lipases resulted in chimeric proteins with altered catalytic properties and enantioselectivity[27]. These facts could contribute to the different substrate recognition and hydrolytic efficiency of PlicB.

In terms of regioselectivity toward the position of the acyl group of triglycerides, lipases can be classified into *sn*-1,3-regiospecific (*Rhizomucormiehei* lipase), *sn*-2 specific (*C. antarcticalipase* A) and nonspecific lipases (*C. rugosa* lipase). The substrate utilized in the Lipase activity assay kit II (Sigma-Aldrich) is a thioester analog of tributyrin (2,3 dimercapto-1-propanoltributyrate, DMPTB)[28]. Thus, *sn*1,3-specific lipase can hydrolyze only one of the DMPTB-thioester groups, whereas nonspecific lipases could hydrolyze two groups [29]. According to that, the differences in lipase activity with this substrate could be related with the fact that PlicB may be classified as nonspecific lipase while CalB would be an 1,3-specific lipase.

In spite of the substrate specificity differences found, the temperature stability (T_{50}) (Fig 4) and pH stability of PlicB (42°C and stable between pH 6 and 9) revealed a thermal and pH stability situated in the same range of CalB(46°C) and other CalB-like lipases [30]. Enzymes stable at wide range of pH and temperature are desirable for their biotechnological application[1].

In summary, genome mining has been proved as useful strategies in order to discover new enzyme with potential improved properties. Putative lipases from the CalB family were screened using two different strategies. Most of theselected candidates corresponded with previously characterized proteins, however, a new putative lipase (PlicB), lacking the conserved

Table 1. Specific activity of ofPlicB and commercial non-immobilized CalB.

Substrate	Fattyacids	Specificactivity (mU mg-1)	
		PlicB	CalB
<i>p</i> NPB	C4:0	100 ± 19	4300 ± 500
<i>p</i> NPL	C12:0	32 ± 2	209 ± 5
<i>p</i> NPP	C16:0	22 ± 4	15 ± 8
Lipase kit	C4:0	1400 ± 106	343 ± 6

Esterase activity was assayed using different acyl long chain *p*NP esters as substrate (1.5mM in presence of 1% Genapol X-100). Lipase activity was assayed using the lipase assay kit II (Sigma-Aldrich).

doi:10.1371/journal.pone.0124882.t001

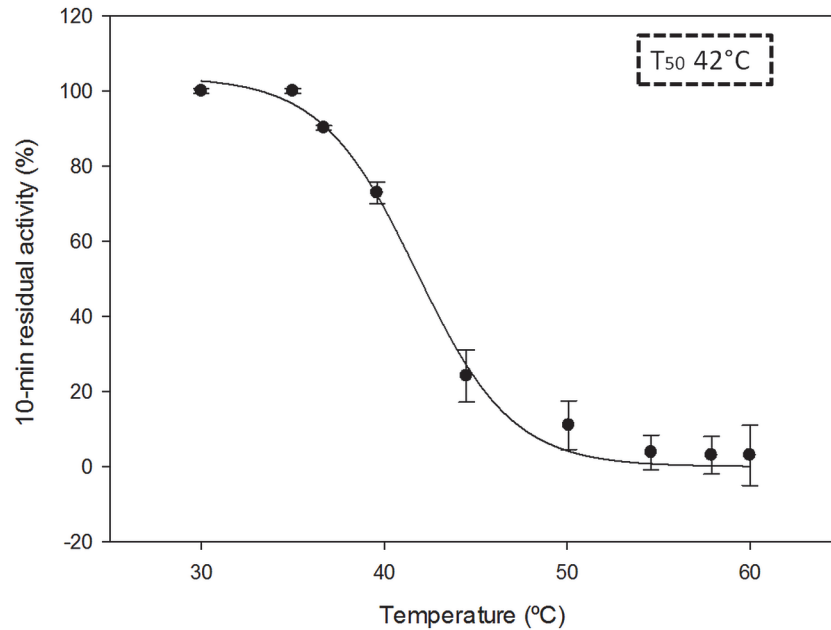


Fig 4. Temperature stability. Purified PlicB in 20mM Tris-HCl pH 7 was incubated 10 min at different temperatures (30–60°C). Temperature stability is presented as T_{50} value (dashed box).

doi:10.1371/journal.pone.0124882.g004

motif (WSQG) in the catalytic Ser shoulder, was identified. PlicB was expressed in two different heterologous hosts, purified, and partly characterized.

Supporting Information

S1 Fig. Comparison of PlicB 3D model and the molecular structure of CalB. A) PlicB structural model, ribbon diagram (upper part) and molecular surface (lower part). B) CalB structure (PDB: 1tca) ribbon diagram (upper part) and molecular surface (lower part). Catalytic serine is represented in magenta. The alpha helix delimiting the enzyme's lid region in CalB is represented in red, while PlicB model presents a loop (in pink). PlicB possesses a cleft-like enzymatic cavity, while CalB possesses a funnel-like binding site (lower part). (PDF)

S2 Fig. PlicBlipase activity tested in Tributyrin and Tween 20/40/60 plates. Twenty-five micrograms and 50 μ g were dropped into Tributyrin and Tween20/40/60 plates respectively and incubated at 28°C for 24 h, in the case of Tween60 the incubation was for 48 hours. (PDF)

Author Contributions

Conceived and designed the experiments: JB MJM. Performed the experiments: MEV LIE JB. Analyzed the data: MEV LIE JB. Wrote the paper: MEV JB MJM.

References

1. Casas-Godoy L, Duquesne S, Bordes F, Sandoval G, Marty A (2012) Lipases: an overview. In: Sandoval G (ed) *Methods in molecular biology*, Springer, New York 861:3–30. doi: [10.1007/978-1-61779-600-5_1](https://doi.org/10.1007/978-1-61779-600-5_1) PMID: [22426709](https://pubmed.ncbi.nlm.nih.gov/22426709/)
2. Verger R (1997) Interfacial activation of lipases: fact and artifacts. *Trends Biotechnol* 15:32–38.

3. Ben Ali Y, Verger R, Abousalham A (2012) Lipases or esterases: Does it really matter? toward a new Bio-Physico-chemical characterization. An overview. In: Sandoval G (ed) *Methods in molecular biology*, Springer, New York 861:31–51. doi: [10.1007/978-1-61779-600-5_2](https://doi.org/10.1007/978-1-61779-600-5_2) PMID: [22426710](https://pubmed.ncbi.nlm.nih.gov/22426710/)
4. Shivaji S, Prasad GS (2009) Antarctic Yeasts: Biodiversity and Potential Applications. In: Satyanarayana T and Kunze G (eds) *Yeast biotechnology: diversity and applications*. Springer-Verlag Berlin, Heidelberg, pp 3–18.
5. Brundiek H, Sass S, Evitt A, Kourist R, Bornscheuer UT (2012) The short form of the recombinant CAL-A-type lipase UM03410 from the smut fungus *Ustilago maydis* exhibits an inherent trans-fatty acid selectivity. *Appl Microbiol Biotechnol* 94:141–150. doi: [10.1007/s00253-012-3903-9](https://doi.org/10.1007/s00253-012-3903-9) PMID: [22294433](https://pubmed.ncbi.nlm.nih.gov/22294433/)
6. Buerth C, Kovacic F, Stock J, Terfruchte M, Wilhelm S, et al. (2014) Uml2 is a novel CalB-type lipase of *Ustilago maydis* with phospholipase A activity. *Appl Microbiol Biotechnol* 98:4963–4973. doi: [10.1007/s00253-013-5493-6](https://doi.org/10.1007/s00253-013-5493-6) PMID: [24469105](https://pubmed.ncbi.nlm.nih.gov/24469105/)
7. Uppenberg J, Hansen MT, Patkar S, Jones TA (1994) The sequence, crystal structure determination and refinement of two crystal forms of lipase B from *Candida antarctica*. *Structure* 2:293–308. PMID: [8087556](https://pubmed.ncbi.nlm.nih.gov/8087556/)
8. Idris A, Bukhari A (2012) Immobilized *Candida antarctica* lipase B: Hydration, stripping off and application in ring opening polyester synthesis. *Biotech Adv* 30:550–563. doi: [10.1016/j.biotechadv.2011.10.002](https://doi.org/10.1016/j.biotechadv.2011.10.002) PMID: [22041165](https://pubmed.ncbi.nlm.nih.gov/22041165/)
9. Pleiss J, Fischer M, Peiker M, Thiele C, Schmid RD (2000) Lipase engineering database: understanding and exploiting sequence-structure-function relationships. *J Mol Cat B Enzym* 10:491–508.
10. Martinelle M, Holmquist M, Hult K (1995) On the interfacial activation of *Candida antarctica* lipase A and B as compared with *Humicola lanuginosa* lipase. *Biochim Biophys Acta* 1258:272–276. PMID: [7548197](https://pubmed.ncbi.nlm.nih.gov/7548197/)
11. Barriuso J, Martinez MJ (2014) *In silico* metagenomes mining to discover novel esterases with industrial application by sequential search strategies. *J Microbiol Biotechnol*. doi: [10.4014/jmb1406.06049](https://doi.org/10.4014/jmb1406.06049)
12. Barriuso J, Prieto A, Martinez MJ (2013) Fungal genomes mining to discover novel sterol esterases and lipases as catalysts. *BMC Genomics* 14:712. doi: [10.1186/1471-2164-14-712](https://doi.org/10.1186/1471-2164-14-712) PMID: [24138290](https://pubmed.ncbi.nlm.nih.gov/24138290/)
13. Gutierrez-Fernández J, Vaquero ME, Prieto A, Barriuso J, Martínez MJ, et al. (2014) Crystal structures of *Ophiostoma piceae* sterol esterase: structural insights into activation mechanism and product release. *J Struct Biol* 187:215–222. doi: [10.1016/j.jsb.2014.07.007](https://doi.org/10.1016/j.jsb.2014.07.007) PMID: [25108239](https://pubmed.ncbi.nlm.nih.gov/25108239/)
14. Stoll M, Piepenbring M, Begerow D, Oberwinkler F (2003) Molecular phylogeny of *Ustilago* and *Sporisorium* species (Basidiomycota, Ustilaginales) based on internal transcribed spacer (ITS) sequences. *Can J Bot* 81:976–984.
15. Wang QM, Jia JH, Bai FY (2006) *Pseudozyma hubeiensis* sp nov and *Pseudozyma shanxiensis* sp nov., novel ustilaginomycetous anamorphic yeast species from plant leaves. *Int J Syst Evol Microbiol* 56:289–293. PMID: [16403900](https://pubmed.ncbi.nlm.nih.gov/16403900/)
16. Besenmatter W, Svendsen A, Rannes JB, Jäckel C (2013) Lipase variants and polynucleotides encoding same. Patent WO2013010783 A1.
17. Hibbett DS, Bauer R, Binder M, Giachini AJ, Hosaka K, et al. (2014) Agaricomycetes. In: McLaughlin DJ and Spatafora JW (Eds) *The mycota VII Part A Systematic and evolution*, 2nd edn. Springer-Verlag Berlin, Heidelberg, pp 373–429.
18. Gordon S, Tseng E, Salamov A, Zhang J, Meng X, et al. (2014) Widespread polycistronic transcripts in mushroom-forming fungi revealed by single-molecule long-read mRNA sequencing. *BioRxiv*-doi:10.1101/012542.
19. Gaillardin C (2010) Lipases as Pathogenicity Factors of Fungi. In: Timmis KN (ed) *Handbook of hydrocarbon and lipid microbiology*. Springer-Verlag Berlin, Heidelberg, pp 3259–3268.
20. Magnusson AO, Rotticci-Mulder JC, Santagostino A, Hult K (2005) Creating space for large secondary alcohols by rational redesign of *Candida antarctica* lipase B. *ChemBioChem* 6:1051–1056 PMID: [15883973](https://pubmed.ncbi.nlm.nih.gov/15883973/)
21. Ganjalikhany MR, Ranjbar B, Taghavi AH, Tohidi Moghadam T (2012) Functional motions of *Candida antarctica* lipase B: A survey through open-close conformations. *PLoS ONE* 7:e40327. doi: [10.1371/journal.pone.0040327](https://doi.org/10.1371/journal.pone.0040327) PMID: [22808134](https://pubmed.ncbi.nlm.nih.gov/22808134/)
22. Gasser B, Saloheimo M, Rinas U, Dragosits M, Rodríguez-Carmona E, et al. (2008) Protein folding and conformational stress in microbial cells producing recombinant proteins: a host comparative overview. *Microbial Cell Factories* 7:11. doi: [10.1186/1475-2859-7-11](https://doi.org/10.1186/1475-2859-7-11) PMID: [18394160](https://pubmed.ncbi.nlm.nih.gov/18394160/)
23. Valero F (2012) Heterologous Expression Systems for Lipases: A Review. In: Sandoval G (ed) *Methods in molecular biology*, Springer, New York 861:161–178. doi: [10.1007/978-1-61779-600-5_11](https://doi.org/10.1007/978-1-61779-600-5_11) PMID: [22426719](https://pubmed.ncbi.nlm.nih.gov/22426719/)

24. Qian Z, Horton JR, Cheng X, Lutz S (2009) Structural redesign of lipase B from *Candida antarctica* by circular permutation and incremental truncation. *J Mol Biol* 393:191–201. doi: [10.1016/j.jmb.2009.08.008](https://doi.org/10.1016/j.jmb.2009.08.008) PMID: [19683009](https://pubmed.ncbi.nlm.nih.gov/19683009/)
25. Pleiss J, Fischer M, Schmid RD (1998) Anatomy of lipase binding sites: the scissile fatty acid binding site. *Chem Phys Lipids* 93:67–80. PMID: [9720251](https://pubmed.ncbi.nlm.nih.gov/9720251/)
26. Naik S, Basu A, Saikia R, Madan B, Paul P, et al. (2010) Lipases for use in industrial biocatalysis: Specificity of selected structural groups of lipases. *J Mol Cat B Enzym* 65:18–23.
27. Skjøt M, De Maria L, Chatterjee R, Svendsen A, Patkar SA, et al. (2009) Understanding the Plasticity of the α/β Hydrolase Fold: Lid swapping on the *Candida antarctica* lipase B results in chimeras with interesting biocatalytic properties. *ChemBioChem* 10:520–527. doi: [10.1002/cbic.200800668](https://doi.org/10.1002/cbic.200800668) PMID: [19156649](https://pubmed.ncbi.nlm.nih.gov/19156649/)
28. Choi SJ, Hwang JM, Kim SI (2003) A colorimetric microplate assay method for high throughput analysis of lipase activity. *J Biochem Mol Biol* 36:417–420. PMID: [12895302](https://pubmed.ncbi.nlm.nih.gov/12895302/)
29. Farias RN, Torres M, Canela R (1997) Spectrophotometric determination of the positional specificity of nonspecific and 1,3-specific lipases. *Anal Biochem* 252:186–189. PMID: [9324958](https://pubmed.ncbi.nlm.nih.gov/9324958/)
30. Xie Y, An J, Yang G, Wu G, Zhang Y, et al. (2014) Enhanced enzyme kinetic stability by increasing rigidity within the active site. *J Biol Chem* 289:7994–8006. doi: [10.1074/jbc.M113.536045](https://doi.org/10.1074/jbc.M113.536045) PMID: [24448805](https://pubmed.ncbi.nlm.nih.gov/24448805/)