



# Real-time colorectal polyp detection using a novel computer-aided detection system (CADE): a feasibility study

E. Soons<sup>1</sup> · T. Rath<sup>2</sup> · Y. Hazewinkel<sup>1</sup> · W. A. van Dop<sup>1</sup> · D. Esposito<sup>3</sup> · P. A. Testoni<sup>3</sup> · P. D. Siersema<sup>1</sup>

Accepted: 18 September 2022 / Published online: 27 September 2022  
© The Author(s) 2022

## Abstract

**Background and aims** Colonoscopy aims to early detect and remove precancerous colorectal polyps, thereby preventing development of colorectal cancer (CRC). Recently, computer-aided detection (CADE) systems have been developed to assist endoscopists in polyp detection during colonoscopy. The aim of this study was to investigate feasibility and safety of a novel CADE system during real-time colonoscopy in three European tertiary referral centers.

**Methods** Ninety patients undergoing colonoscopy assisted by a real-time CADE system (DISCOVERY; Pentax Medical, Tokyo, Japan) were prospectively included. The CADE system was turned on only at withdrawal, and its output was displayed on secondary monitor. To study feasibility, inspection time, polyp detection rate (PDR), adenoma detection rate (ADR), sessile serrated lesion (SSL) detection rate (SDR), and the number of false positives were recorded. To study safety, (severe) adverse events ((S)AEs) were collected. Additionally, user friendliness was rated from 1 (worst) to 10 (best) by endoscopists.

**Results** Mean inspection time was  $10.8 \pm 4.3$  min, while PDR was 55.6%, ADR 28.9%, and SDR 11.1%. The CADE system users estimated that <20 false positives occurred in 81 colonoscopy procedures (90%). No (S)AEs related to the CADE system were observed during the 30-day follow-up period. User friendliness was rated as good, with a median score of 8/10.

**Conclusion** Colonoscopy with this novel CADE system in a real-time setting was feasible and safe. Although PDR and SDR were high compared to previous studies with other CADE systems, future randomized controlled trials are needed to confirm these detection rates. The high SDR is of particular interest since interval CRC has been suggested to develop frequently through the serrated neoplasia pathway.

**Clinical Trial Registration** The study was registered in the Dutch Trial Register (reference number: NL8788).

**Keywords** Endoscopy · Computer-aided detection (CADE) system · Colorectal polyp · Colorectal adenoma · Detection

## Introduction

Colorectal cancer (CRC) is the third most common and second most lethal cancer worldwide [1]. CRC typically develops from benign, precancerous lesions. Approximately

80–85% of CRCs develop from adenomas following the adenoma-carcinoma pathway. An additional 15–20% of CRCs develop through the serrated neoplasia pathway, of which sessile serrated lesions (SSLs) are considered the most important precursor lesions [2, 3].

Although colonoscopy is the most accurate screening modality for detecting and removing colorectal polyps, a substantial number of polyps is still missed. Earlier studies have reported a polyp miss rate (PMR) of 21–28%, an adenoma miss rate (AMR) of 22–26%, and a SSL miss rate of 27% [4, 5]. As expected, miss rates are higher when polyp size is smaller; for adenomas > 10 mm, the AMR is 2–6%, while for diminutive polyps (1–5 mm), it is reported to be as high as 26–28% [4, 5]. Missed lesions have a risk of developing into CRC, and it is thought that at least 50% of all interval cancers (iCRCs; defined as CRC diagnosed between screening and post-screening surveillance colonoscopies) develop from missed lesions

✉ E. Soons  
elsa.soons@radboudumc.nl

<sup>1</sup> Department of Gastroenterology and Hepatology, Radboud Institute for Health Sciences, Radboud University Medical Center, 9101, 6500 HB Nijmegen, the Netherlands

<sup>2</sup> Department of Internal Medicine 1, Division of Gastroenterology, Friedrich-Alexander-University, Ludwig Demling Endoscopy Center of Excellence, Erlangen Nuernberg, Germany

<sup>3</sup> Gastroenterology and Gastrointestinal Endoscopy Unit, Vita-Salute San Raffaele University, Scientific Institute San Raffaele, Milan, Italy

during colonoscopy [6]. Interestingly, CRCs deriving from the serrated neoplasia pathway seem to be over-represented among interval carcinomas, making it even more important to early detect and resect SSLs [7].

The risk of iCRC increases when the polyp detection rate (PDR) and adenoma detection rate (ADR) are lower. An increased risk of iCRC has been reported if the PDR is < 20% [8]. The same is true for ADR, with an increased risk of iCRC when the ADR is < 20% [9]. Moreover, ADR has been shown to be inversely correlated with the incidence of CRC, with every 1% increase in ADR being associated with a 3% decrease in the risk of iCRC and a 5% decrease in the risk of fatal iCRC [10].

Human error is one of the factors responsible for a lower PDR. This error can (at least partly) be explained by so-called “inattention blindness.” This is a term used by psychologists to describe the lapse of focus, even when the motivation is strong to maintain concentrated [11, 12]. This issue has been addressed in several studies by including a second observer during colonoscopy which was shown to be beneficial for the detection of polyps, especially for the detection of diminutive polyps and adenomas [13–15].

Recently, computer-aided detection (CADE) systems have become increasingly popular as a new solution to the human error in detecting polyps. CADe systems use deep learning to improve polyp detection in a more consistent and reliable way than a second human observer can do. Over the past few years, several CADe systems have been developed and tested in real-time. Various meta-analyses, that included randomized controlled trials (RCTs) comparing CADe-assisted colonoscopy with conventional colonoscopy (CC), have shown a significant increase in ADR in favor of CADe-assisted colonoscopy (33.7–36.6% versus 22.9–26.6%, respectively). Similarly, PDR also significantly increased in the CADe group compared to the CC group (45.6% versus 30.6%, respectively) [16–18].

Recently, a novel CADe system (DISCOVERY; Pentax Medical, Tokyo, Japan) has been introduced. While pre-clinical studies have shown 90% sensitivity and 80% specificity with this CADe system [19], the system has not been systematically evaluated during real-time colonoscopy to date. The aim of this study was therefore to investigate the feasibility and safety of this CADe system during in vivo colonoscopy in three European tertiary referral centers.

## Methods

### Study design

In order to analyze the feasibility and safety of the novel CADe system, a prospective study including 90 colonoscopies

was performed using this CADe system. All colonoscopies were performed in three European tertiary referral centers (Radboudumc, Nijmegen, the Netherlands; Universitätsklinikum Erlangen, Erlangen, Germany; and Vita-Salute San Raffaele University, Milan, Italy), with each center including 30 patients to ensure equal patient distribution.

### Outcomes

To study feasibility, inspection time, detection ratios (PDR, ADR, and SSL detection rate (SDR)), and number of false positives (as rated by the endoscopist) were taken as a composite endpoint. To study safety, (severe) adverse events ((S)AEs) were collected. Other outcomes included total number of polyps (PPC), adenomas (APC) and SSLs (SPC) per colonoscopy, Boston Bowel Preparation Score (BBPS), and total procedure time. Additionally, endoscopists were asked to subjectively evaluate the number of false negatives and user friendliness of the CADe system, rated on a scale from 1 (worst) to 10 (best).

### Participants

Patients aged  $\geq 18$  years, scheduled for diagnostic, non-immunochemical fecal occult blood test (iFOBT) based screening or surveillance colonoscopy were eligible to participate in the study. Patients were excluded if they were known with a colorectal tumor or with polyp(s) on referral, inadequately corrected anticoagulation disorder or continuous anticoagulation medication use during colonoscopy, American Society of Anesthesiologists (ASA) score  $\geq 3$ , a known or suspected diagnosis of inflammatory bowel disease, if they were referred for a therapeutic procedure (i.e., endoscopic resection, intervention for lower gastro-intestinal bleeding), or if the colonoscopy procedure was incomplete (i.e., if the cecum was not reached or the procedure ended prematurely). Eligible patients were invited to participate in consecutive order, up to a maximum of 30 patients per study site (excluding screen failures). All participants gave written informed consent before participating in the study.

Patients who were found to have an inadequate bowel preparation, as measured by BBPS < 6, or a score of < 2 in any segment of the colon, were included in the analysis when the endoscopist decided to continue the colonoscopy. The reason was that the performance of the system in an inadequately prepared colon was also considered to be an outcome in this feasibility study.

### Materials and procedure

The CADe system uses a deep convolutional neural network (DCNN) to detect colorectal polyps. The DCNN has been developed with > 100,000 images from 788 polyps in 278

unique patients. Five expert endoscopists annotated the presence of polyps in this dataset. These annotations were considered the golden standard. For the training process of the DCNN, a dataset of 10,467 images from 504 different polyps was used. All images used for the training phase were provided by five centers from four countries. The ratio between inpatients and outpatients in the training dataset was 22% versus 78%. To evaluate the systems' performance, videos rather than still images were used, to mimic the clinical setting as realistically as possible. For this, an independent test dataset was generated, consisting of 45 videos comprising of 15,534 single annotated video frames. To reduce the number of false positives, a minimum of three consecutive frames are considered positive before a detection signal (acoustically and/or visually) is provided. This results in a delay between the initial detection of a polyp and it being marked of  $\pm 100$  ms. For more information, we refer to Pfeifer et al., who described in great detail how this CADe system was developed [20].

The CADe displays the video coming from the video processor with a delay of  $\pm 15$ –30 ms, which is hardly noticeable to the human eye, on a second screen that is placed next to and parallel to the primary endoscopy monitor. Suspicious areas are highlighted by an overlaying bounding box on the endoscopic output video in real time (see Fig. 1 as an example). The system is intended to be used as a secondary monitor for the endoscopic system to assist the endoscopist in detecting colorectal polyps during colonoscopy. The

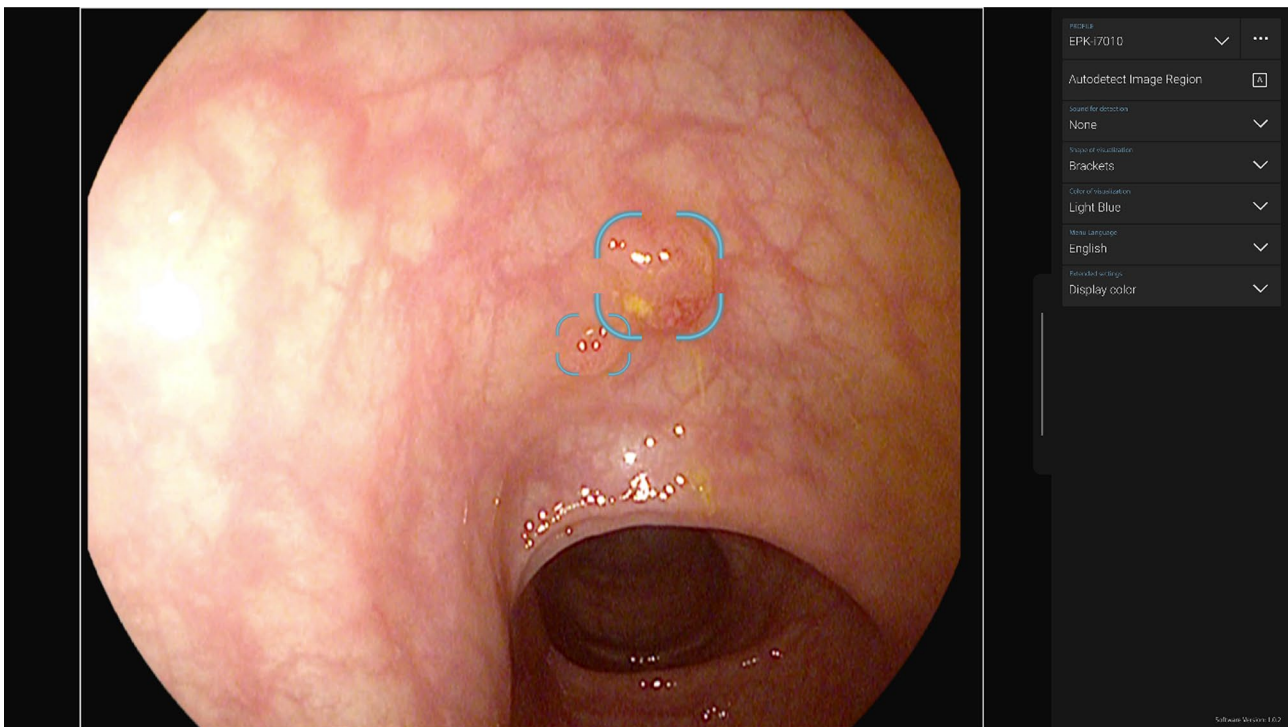
diagnosis itself and the decision to perform treatment remains the responsibility of the endoscopist.

All colonoscopies were performed by experienced endoscopists (> 500 independently conducted colonoscopies). The studied CADe system was the first CADe system to be used for all participating endoscopists. All of them had the opportunity to practice with the system for a maximum of five colonoscopies before including patients in the study. To reduce operator-related variability, a maximum of three endoscopists per center participated in the study. All colonoscopies were performed using HD-WLE endoscopes (EC-38 i10 or EC-3890Fi, Pentax Medical). No complementary measures (i.e., cap devices) were used to increase polyp detection.

The CADe system was switched on during colonoscope withdrawal only. The endoscopist was instructed to look primarily on the main monitor during the procedure, and to look at the secondary screen only when the CADe system highlighted an area through an acoustic signal. Also, the endoscopist was instructed to aim for a withdrawal time of at least 6 min (excluding the time to perform polypectomy).

## Histopathological evaluation

All resected polyps were sent in separate containers for histopathological evaluation at the local center. All participating pathologists were trained as gastrointestinal pathologist.



**Fig. 1** An example video output of a CADe system. Printed with permission of Pentax Medical EMEA

## Data collection and management

The following outcome data were collected during each colonoscopy: number of resected polyps, procedure time, type of colonoscope, inspection time (excluding time for biopsies/polypectomies, as measured using a stopwatch), and BBPS. In addition, the following data were collected for each detected polyp: location, size, morphology according to the Paris classification [21], and the histopathological diagnosis. Other data that were collected included patients' sex, age, smoking status, body mass index (BMI), family history of CRC, and the colonoscopy indication. To assess whether (S)AEs had occurred, patients were followed-up for a period of 30 days after the colonoscopy.

To evaluate the ease of use of the CADe, the performing endoscopists were asked to estimate the number of polyps that they considered to have missed without the CADe, the number of false negatives (i.e., polyps missed by the CADe system), and the number of false positives (i.e., acoustic notifications with no polyp present). For the latter, the colonoscopists were asked to categorize the number of false positives into five categories, i.e., 0–10, 10–20, 20–50, 50–100, and > 100. The user friendliness of each colonoscopy with the CADe system was rated on a scale from 1 (worst) to 10 (best).

All data were collected and stored anonymously in CastorEDC (Castor Electronic Data Capture, Ciwit BV, Amsterdam, the Netherlands), an online Electronic Data Capture platform.

## Ethical approval

The study protocol was approved by the local institutional review board in each participating center, and the study was performed in accordance with the Helsinki Declaration. The study was monitored in accordance with good clinical practice (GCP) principles. The study was registered in the Dutch Trial Register (<https://trialsearch.who.int/Trial2.aspx?TrialID=NL8788>).

## Statistical analysis

Categorical data are presented as counts and percentages. Continuous data are reported as mean ( $\pm$  standard deviation (SD)) or median ( $\pm$  interquartile range (IQR)) when appropriate. All analyses were performed using the software program IBM SPSS Statistics, version 25 (SPSS Inc., Chicago, IL, USA).

## Results

### Baseline characteristics

Ninety-eight patients gave their consent to participate in the study. Eight patients were excluded from analysis, because the colonoscopy was ended prematurely ( $n = 7$ ) or the cecum was not reached ( $n = 1$ ). Figure 2 represents the flow diagram of inclusion.

Baseline characteristics of the demographic and endoscopic data of all included patients are shown in Table 1. Of all 90 patients included, 30 (33.3%) were women. In addition, three patients with Lynch syndrome and one patient with serrated polyposis syndrome (SPS) were included. Two centers performed all colonoscopies under propofol as per local protocol, whereas in the other center, midazolam was used. The BBPS was rated as inadequate in 15/30 procedures in one center, and 1/30 in both other centers. The mean inspection time (excluding procedure time) was  $10.8 \pm 4.3$  min. The median inspection time for the first five colonoscopies performed per endoscopist was 11.5 (IQR 5.00), which significantly decreased from the sixth colonoscopy onward to 9.00 (IQR 2.25,  $p < 0.001$ ), data not shown.

In addition, Supplementary Table 1 shows the exact number of included colonoscopies per examiner. In one center (Universitätsklinikum Erlangen), all colonoscopies were performed by one endoscopist. In other centers, more than one endoscopist have performed the colonoscopies.

### Polyp characteristics

Polyp characteristics are shown in Table 2. A total of 87 polyps were detected in 50 colonoscopies (55.5%). In 23/90 patients (25.6%), more than 1 polyp was detected. Forty-four polyps (50.6%) were resected in the right-sided (i.e., from cecum to splenic flexure) colon, while 43 polyps (49.4%) were resected in the left-sided colorectum. The majority of removed polyps was diminutive ( $n = 62$ , 71.3%) and histologically diagnosed as adenoma ( $n = 41$ , 47.1%). Twelve polyps (13.8%) were histologically diagnosed as SSL. Most SSLs (10/12, 83.3%) were found in the proximal colon, whereas most hyperplastic polyps (20/23, 87.0%) were found in the distal colorectum (see Supplementary Table 2 for polyp location per histopathological diagnosis). Also, five polyps were histologically diagnosed as inflammatory polyp, two as normal tissue, one as traditional serrated adenoma (TSA), and one as connective tissue polyp. Two polyps could not be retrieved.

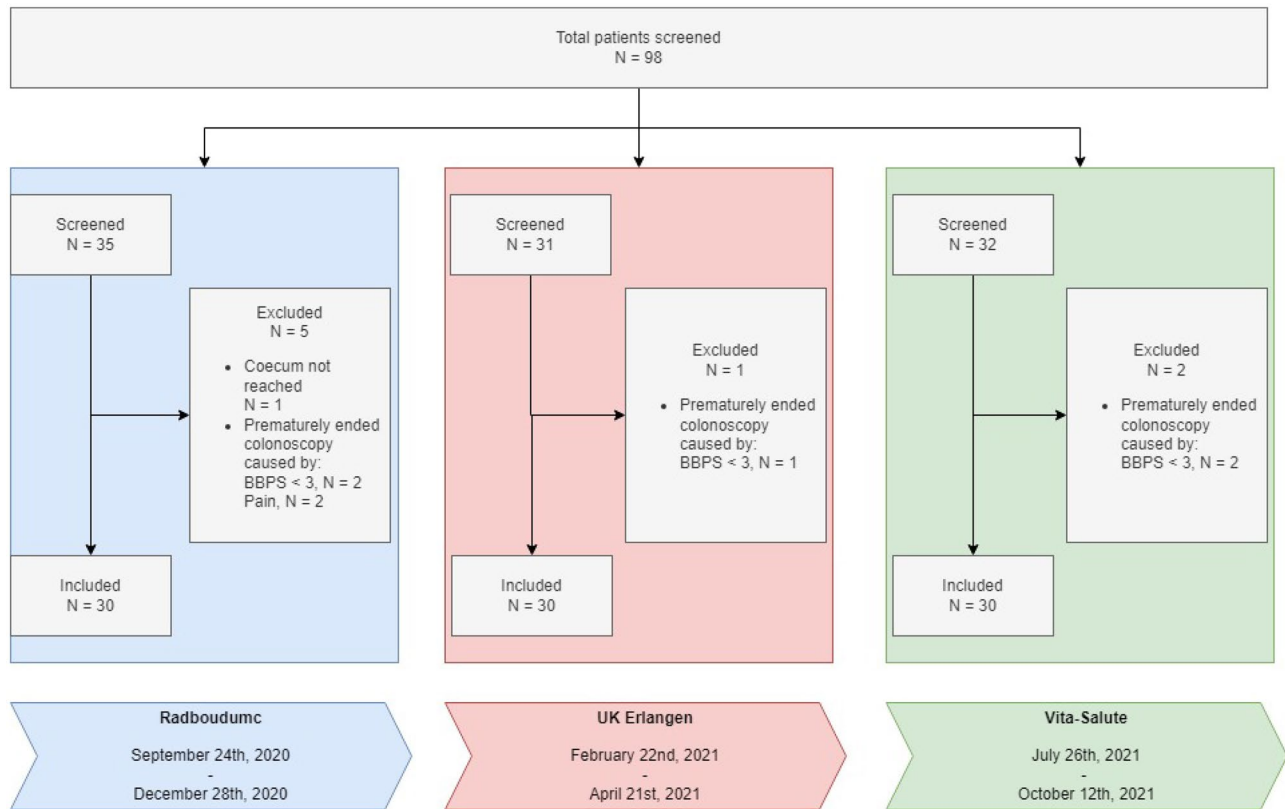


Fig. 2 Flow diagram of inclusion

### Detection rates and median number of polyps, adenomas, and SSLs per colonoscopy

Detection rates for different types of polyps and median number of polyps, adenomas, and SSLs per colonoscopy are shown in Table 3. The PDR was 55.6%, ADR 28.9%, and SDR 11.1%. The PPC was 1 (IQR 2; mean  $0.97 \pm 1.19$  (SD)), APC was 0 (IQR 1; mean  $0.46 \pm 0.88$ ), and SPC was 0 (IQR 0; mean  $0.13 \pm 0.40$ ).

No statistically significant differences were found in detection ratios and in PPC, APC, and SPC when comparing patients with inadequate bowel preparation to patients with adequate bowel preparation (see Supplementary Table 3).

### Safety

Frequency and types of (S)AEs are shown in Table 4. In most (88/90, 97.8%) colonoscopies, no (S)AEs were observed. In one patient, an intraprocedural bleeding after removal of a diminutive lesion was successfully treated with a hemostatic clip. A second patient experienced intraprocedural bradycardia. After administration of anticholinergic medication, the heart rate normalized, and the procedure could be completed. None of the AEs were considered to

be related to the CADe system. No (S)AEs occurred within 30 days after the colonoscopy procedure.

### CADe usage

Table 5 shows the evaluation of the CADe system by the endoscopists. Endoscopists had not the impression that the CADe system had detected additional polyps (range 0–1), nor that the system had missed any of the polyps that were first detected by the endoscopist (range 0–1). During most colonoscopies,  $\leq 20$  false positives were registered (81/90, 90%). False positives were mostly caused by residual colonic fluid, colonic folds, and shadows (e.g., from colonic folds). Endoscopists rated the user friendliness of the CADe system with a median of 8/10 (IQR 2).

### Discussion

In this multicenter feasibility and safety study investigating a novel CADe system, the mean inspection time was  $10.8 \pm 4.3$  min, and PDR, ADR, and SDR were found to be 55.6%, 28.9%, and 11.1%, respectively. No (S)AEs related to the CADe system were observed during the 30-day

**Table 1** Baseline characteristics of demographic and endoscopic data. CADe computer aided detection system; y years; SD standard deviation; BMI body mass index; iFOBT immunochemical fecal occult blood test; BBPS Boston bowel preparation scale; ‡ missing for one case; † adequate BBPS score if sum  $\geq 6$  and every segment  $\geq 2$

| Variable   | CADe colonoscopy, <i>n</i> = 90 |
|--|---------------------------------|
| <b>Demographic data</b>  |                                 |
| Age (y), mean $\pm$ SD   | 62.3 $\pm$ 12.1                 |
| BMI, mean $\pm$ SD   | 25.9 $\pm$ 4.9                  |
| Sex (female), <i>n</i> (%)   | 30 (33.3)                       |
| Indication for colonoscopy, <i>n</i> (%)                               | 38 (42.2)                       |
| Diagnostic   | 12 (13.3)                       |
| Screening (non-iFOBT)  | 40 (44.4)                       |
| Surveillance   |                                 |
| Hereditary cancer syndrome   | 4 (4.4)                         |
| Smoking, <i>n</i> (%)  | 14 (15.7)                       |
| Family history of CRC‡, <i>n</i> (%)                                   | 19 (21.3)                       |
| <b>Endoscopic data</b>   |                                 |
| Endoscope, <i>n</i> (%)  | 80 (88.9)                       |
| EC38-i10   | 10 (11.1)                       |
| EC-3890Fi  |                                 |
| General anesthesia (no), <i>n</i> (%)                                  | 59 (65.6)                       |
| Total BBPS score, mean $\pm$ SD  | 7.1 $\pm$ 1.9                   |
| BBPS rank adequate†, <i>n</i> (%)                                      | 73 (81.1)                       |
| Procedure time (min), mean $\pm$ SD                                    | 23.0 $\pm$ 9.3                  |
| Inspection time excluding biopsy/polypectomy time (min), mean $\pm$ SD | 10.8 $\pm$ 4.3                  |

post-colonoscopy study period. Users estimated < 20 false positives in most colonoscopies (81/90, 90%) and rated user friendliness of the CADe system with a median of 8/10.

Several other studies that included 184–502 subjects and investigated different CADe systems have reported CADe system assisted inspection times of 6.16–7.30 min [22–27]. The median inspection time of 10.8 min in our study suggests that there may be some room for improvement; however, when excluding the first five colonoscopies that had been performed by each participating endoscopist, the median inspection time in our study significantly reduced from 11.5 (IQR 5.00) to 9.00 (IQR 2.25,  $p < 0.001$ ) minutes. This withdrawal time of 9.00 min in our study is comparable to the inspection time of 9.30 min reported in a smaller single-center study that included 83 subjects, which is however still approximately three times as many as the 30 subjects per study site in our study [28]. Therefore, we are optimistic that CADe-assisted inspection time will reduce to an inspection time of 6–8 min when endoscopists have become more experienced in using this CADe system.

Since 2019, seven RCTs, including > 5500 subjects, have shown increased detection rates of polyps, adenomas, and SSLs with CADe-assisted colonoscopy, although the findings were not always statistically significant [22–27, 29]. In

**Table 2** Polyp characteristics. CADe, computer-aided detection system; SSL, sessile serrated lesion; HP, hyperplastic polyp

| Variable                                   | Polyps detected during CADe colonoscopy, <i>n</i> = 87 |
|--|--|
| Polyps removed per patient, <i>n</i> (%)   | 40 (44.4)  |
| 0  | 27 (30.0)  |
| 1  | 16 (17.8)  |
| 2  | 3 (3.3)  |
| 3  | 4 (4.4)  |
| $\geq 4$                                   |  |
| Location, <i>n</i> (%)                     | 10 (11.5)  |
| Cecum                                      | 24 (27.6)  |
| Ascending                                  | 10 (11.5)  |
| Transverse                                 | 16 (18.4)  |
| Descending                                 | 17 (19.5)  |
| Sigmoid                                    | 10 (11.5)  |
| Rectum                                     |  |
| Size, <i>n</i> (%)                         | 62 (71.3)  |
| 0–5 mm                                     | 17 (19.5)  |
| 6–10 mm                                    | 7 (8.0)  |
| 10–20 mm                                   | 1 (1.1)  |
| > 20 mm                                    |  |
| Shape (Paris classification), <i>n</i> (%) | -  |
| Ip   | 43 (49.4)  |
| Is   | 35 (40.2)  |
| Ila  | 9 (10.3)   |
| Iib  |  |
| PA-conclusion, <i>n</i> (%)                | 41 (47.1)  |
| Adenoma                                    | 12 (13.8)  |
| SSL  | 23 (26.4)  |
| HP   | 11 (12.6)  |
| Other                                      |  |

RCTs that reported on PDR, this was found to significantly increase from 25.4–37.8% during CC to 38.3–56.0% during CADe-assisted colonoscopy [22–25, 27, 29]. In all but one RCTs, ADR significantly increased from 16.5–40.4% in CC

**Table 3** Detection rates and median number of detected polyps. CADe, computer-aided detection system; PDR, polyp detection ratio; ADR, adenoma detection ratio; SDR, sessile serrated lesion detection ratio; PPC, number of polyps per colonoscopy; APC, number of adenomas per colonoscopy; SPC, number of sessile serrated lesions per colonoscopy; SD, standard deviation

| Variable          | CADe colonoscopy, <i>n</i> = 90 |
|-------------------|---------------------------------|
| PDR, <i>n</i> (%) | 50 (55.6)                       |
| ADR, <i>n</i> (%) | 26 (28.9)                       |
| SDR, <i>n</i> (%) | 10 (11.1)                       |
| PPC               | 0.97 (1.19)                     |
| Mean (SD)         |                                 |
| APC               | 0.46 (0.88)                     |
| Mean (SD)         |                                 |
| SPC               | 0.13 (0.40)                     |
| Mean (SD)         |                                 |

**Table 4** (Severe) adverse events

| Type of event        | Number of events, <i>n</i> (%) |
|----------------------|--------------------------------|
| Adverse event        | 88 (97.8)                      |
| None                 | 1 (1.1)                        |
| Major bleeding       | -                              |
| Perforation          | 1 (1.1)                        |
| Bradycardia          | -                              |
| Severe adverse event | -                              |

to 28.9–54.8% in CADe assisted colonoscopy [22, 24–27, 29]. The only RCT that did not show a significant increase in ADR was powered to detect a 15% difference in AMR, rather than ADR [23]. Although two RCTs that reported on SDR found an increase from 0.3–5.2% for CC to 0.8–7.0% for CADe-assisted colonoscopy, neither of these were found to be statistically significant [25, 26]. The PDR in our study was higher than the PDRs reported in the CADe arms of almost all RCTs that reported on PDR [22, 24, 25, 27, 29]. Also, the SDR in our study was remarkably high, especially when compared to the reported SDRs in previous RCTs. In Table 6, an overview of study characteristics and outcomes of previous studies on various CADe systems including the current study is shown.

Regarding polyp size and morphology, our results are in line with previous studies. For example, in previous studies, 66.4–80.1% of the detected polyps in the interventional arm were  $\leq 5$  mm, which is consistent with our findings [22, 24, 25, 27, 29]. Additionally, across all RCTs, the vast majority of polyps (89–94%) were flat or had a sessile morphology, which is again consistent with the results of the current study, in which 100% of detected polyps were flat or sessile (i.e., Paris classification Is, IIa and IIb) [22, 24, 25, 27, 29].

Most detected SSLs (10/12, 83.3%) were found in the right-sided colon. Previous meta-analyses have shown that CADe system use resulted in an increased detection of flat and sessile polyps, right-sided polyps and SSLs, among some other characteristics [17, 30]. It is as yet unclear whether the high SDR in our study is caused by the typical morphology (i.e., flat) and location (i.e. right-sided colon) of SSLs, or whether the detection of SSLs irrespective of their endoscopic characteristics is increased by use of this CADe system [31, 32].

To our knowledge, we are the first to report quantitative data on the user experience of the investigated CADe system. According to the endoscopists' experience, the CADe system did not result in the detection of additional polyps, nor did it miss polyps. User friendliness of the CADe system was reported as good with a median of 8.0, and all users reported the system as easy to use. Even though endoscopists noted less than 20 false positive alarms in the far majority of colonoscopies, this was indicated as a drawback of the system. However, this was thought to be caused by the frequent acoustic notifications when a suspicious area was highlighted, which was reported as “annoying” by 3/8 endoscopists that performed 48.9% of all colonoscopy procedures. Endoscopists were instructed to primarily look on the main monitor, and only to look on the secondary (CADe) monitor when an acoustic notification was heard. In many cases, by the time the endoscopist had changed his/her view to the secondary monitor, the suspected area was no longer highlighted. Also, in many cases, a particular “suspected” area was highlighted multiple times, leading to repeated acoustic notifications caused by the same area. It seems likely that when the CADe system is displayed on the primary monitor, false positive observations will no longer be experienced as annoying, because the endoscopist immediately sees why the system is alerting him/her, or, alternatively, because the acoustic notification is switched off by the endoscopist. Moreover, it is expected that the number of false positives will anyhow be reduced when the next update of the CADe system will be launched by early 2022.

The expected shorter inspection time with increasing CADe system experience, the encouraging detection rates, the relatively low incidence of false positives, and the absence of (S)AEs make the implementation of this CADe system in real-time colonoscopy practice feasible and safe. Moreover, both the PDR and SDR of the current study were rather high compared to previous literature with other CADe systems. Although we are optimistic about these detection rates, future well-designed randomized trials powered to detect a clinically and statistically significant improvement in the quality indicator ADR are needed. As 15–20% of CRCs develop from the serrated pathway and SSLs seem to be over-represented among iCRCs, it will be of high interest

**Table 5** Feasibility parameters of CADe system. CADe computer aided detection system; IQR interquartile range

| Feasibility parameter   | Outcome   |
|---|-----------|
| Number of additional polyps discovered with CADe system, median (range) | 0 (0–1)   |
| Number of polyps missed with CADe system, median (range)                | 0 (0–1)   |
| Frequency of false positives, <i>n</i> (%)                              | 42 (46.7) |
| 0–10  | 39 (43.3) |
| 10–20   | 9 (10.0)  |
| 20–50   |           |
| User friendliness, median (IQR)   | 8.0 (2)   |

**Table 6** Study characteristics and outcomes of other CADe system studies. RCT, randomized controlled trial; PDR, polyp detection rate; ADR, adenoma detection rate; SDR, sessile serrated lesion detection rate; NR, not reported; ‡characteristics and outcomes of interven-

tional (CADe) arm only; †screening/surveillance reported as one category; ⌘0–5 mm and 6–10 mm reported as one category; ◇6–10 mm and > 10 mm reported as one category; \*significant difference compared to control group

|                               | Liu et al. [25]<br>2020 | Liu et al. [27]<br>2020 | Repici et al. [26]<br>2020 | Su et al. [29]<br>2019 | Wang et al. [22]<br>2019 | Wang et al. [24]<br>2020 | Wang et al. [23]<br>2020 | Current study               |
|-------------------------------|-------------------------|-------------------------|----------------------------|------------------------|--------------------------|--------------------------|--------------------------|-----------------------------|
| <b>Country</b>                | China                   | China                   | Italy                      | China                  | China                    | China                    | China                    | Germany, Italy, Netherlands |
| <b>Study design</b>           | RCT                     | RCT                     | RCT                        | RCT                    | RCT                      | RCT                      | RCT, tandem              | Prospective cohort          |
| <b>Endoscopist experience</b> | All levels              | NR                      | Experienced                | Experienced            | All levels               | Experienced              | Experienced              | Expert                      |
| <b>Subjects (n) ‡</b>         | 393                     | 508                     | 341                        | 308                    | 522                      | 484                      | 184                      | 90                          |
| <b>Indication (%) ‡</b>       | 21.16                   | 5.91                    | 22.6                       | 37.34†                 | 7.66                     | 17                       | 31.52                    | 13.3                        |
| Screening                     | -                       | -                       | 25.2                       | -                      | -                        | -                        | 10.33                    | 44.4                        |
| Surveillance                  | 78.84                   | 94.09                   | 22.3                       | 62.66                  | 92.34                    | 83                       | 58.15                    | 42.2                        |
| Diagnostic                    |                         |                         |                            |                        |                          |                          |                          |                             |
| <b>Detection rates (%) ‡</b>  | 47.07*                  | 43.65*                  | NR                         | 38.3*                  | 45.02*                   | 52*                      | 55.98*                   | 55.6                        |
| PDR                           | 29.01*                  | 39.10*                  | 54.8*                      | 28.9*                  | 29.12*                   | 34*                      | 34.78                    | 28.9                        |
| ADR                           | 0.76                    | NR                      | 7.0                        | NR                     | NR                       | NR                       | NR                       | 11.1                        |
| SDR                           |                         |                         |                            |                        |                          |                          |                          |                             |
| <b>Polyp size (%) ‡</b>       | 77.66*                  | 66.40*                  | 92⌘*                       | 70.62*                 | 80.12*                   | 81*                      | NR                       | 71.3                        |
| 0–5 mm                        | 19.68                   | 25.20                   | 11                         | 29.38◇*                | 16.67*                   | 17                       |                          | 19.5                        |
| 6–10 mm                       | 2.66                    | 8.40                    |                            | -                      | 3.21                     | 2                        |                          | 9.1                         |
| > 10 mm                       |                         |                         |                            |                        |                          |                          |                          |                             |
| <b>Polyp morphology (%) ‡</b> | 10.11                   | 10.70                   | NR                         | 10.17                  | 9.84                     | 5                        | NR                       | -                           |
| Pedicle                       | 89.89*                  | 37.04*                  |                            | 42.37*                 | 35.34*                   | 94*                      |                          | 49.4                        |
| Sessile                       | NR                      | 52.36*                  |                            | 47.46*                 | 54.82*                   | NR                       |                          | 50.5                        |
| Flat                          | -                       | NR                      |                            | NR                     | NR                       | 1                        |                          | NR                          |
| Laterally spreading tumor     |                         |                         |                            |                        |                          |                          |                          |                             |

to evaluate SDR as additional outcome [7]. Finally, future studies should also focus on the detection of lesions that are easily overlooked without an CADe system, such as small (< 10 mm) and nonpolypoid lesions [23].

Our study has several strengths. First, it is the first international study investigating a novel CADe system in a multicenter setting. Most previous studies have been performed in Asia as single-center studies. Only one previous study was performed as multicenter study, with different participating centers from Italy. Second, the study was performed in real-time colonoscopy practice. Third, this is the first study to quantitatively present data on the safety and user experience of a CADe system.

Some limitations of this study also need to be acknowledged. First, our study was intended to be explorative, and therefore, no control group was included. This makes it difficult to determine the objective additional role of

this CADe system. Second, the definition we used for a false positive (i.e., acoustic notifications with no polyp present) may have resulted in a relatively high number of false positives which complicated the counting of them. Currently, no standardized definition of false positives or negatives is available, making it hard to compare various CADe validation studies [33]. This is illustrated by the fact that in both RCTs published by Wang et al., false positives were defined as a “detected lesion which was continuously traced by the system.” This resulted in a rather low false positive rate (0.075–0.1) per colonoscopy [22, 24]. In contrast, in a frame-by-frame analysis by Brand et al., false positives were defined as any frame that included a “detected area that was not in contact with a polyp.” This more strict definition resulted in a rather high number of false positives per colonoscopy (mean number per of false positives colonoscopy: 101) [34].



Nevertheless, our definition is in line with the proposed definition by Bernal et al. at the Medical Image Computing and Computer Assisted Intervention (MICCAI) conference [35]. Although we were unable to count the number of false positives, our results are in line with a post hoc analysis by Hassan et al., who reported a mean number of false positives of  $27.3 \pm 13.1$  per colonoscopy when using a similar definition [36]. Lastly, bowel preparation was inadequate in 17/90 (18.9%) colonoscopies and in even 15/30 (50.0%) colonoscopies in one participating center. Although endoscopists rated bowel preparation as sufficient to proceed with the colonoscopy, this may have impeded polyp detection and removal on the one hand, but also may have led to increased false positive rates on the other hand.

In conclusion, the use of this CADe system in real-time colonoscopy practice is feasible and safe. Although PDR and SDR were found to be high compared to previous studies investigating other CADe systems, future studies are needed to confirm these increased detection rates. These studies should preferably be well-designed RCTs and should among other endpoints focus on improving ADR, which is until now the most widely accepted colonoscopy quality indicator.

**Supplementary Information** The online version contains supplementary material available at <https://doi.org/10.1007/s00384-022-04258-9>.

**Author contribution** Elsa Soons designed and performed the study; collected, analyzed, and interpreted the data; and wrote the manuscript. Timo Rath and Peter Siersema contributed to the design of the study, performed colonoscopies, collected and interpreted the data, and critically reviewed the manuscript. Pierre Alberto Testoni performed colonoscopies, collected and interpreted the data, and critically reviewed the manuscript. Yark Hazewinkel, Willemijn van Dop, and Dario Esposito performed colonoscopies and collected data. All authors gave final approval of this version to be published.

**Funding** Discovery systems were provided for loan by Pentax Medical Europe for the duration of the study.

**Data availability** The datasets generated during and/or analyzed during the current study are available from the corresponding author on reasonable request.

## Declarations

**Ethics approval** The study protocol was approved by the local institutional review board in each participating center, and the study was performed in accordance with the Helsinki Declaration. The study was monitored in accordance with good clinical practice (GCP) principles.

**Inform consent** All participants gave written informed consent before participating in the study.

**Competing interests** Author Peter Siersema receives unrestricted grants from Pentax (Japan), Norgine (UK), Motus GI (USA), Micro-Tech (China), and The eNose Company (Netherlands) and is in the

advisory board of Motus GI (USA) and Boston Scientific (USA). Authors Elsa Soons, Timo Rath, Yark Hazewinkel, Willemijn van Dop, Dario Esposito, and Pier Alberto Testoni have no conflicts of interest or financial ties to disclose.

**Open Access** This article is licensed under a Creative Commons Attribution 4.0 International License, which permits use, sharing, adaptation, distribution and reproduction in any medium or format, as long as you give appropriate credit to the original author(s) and the source, provide a link to the Creative Commons licence, and indicate if changes were made. The images or other third party material in this article are included in the article's Creative Commons licence, unless indicated otherwise in a credit line to the material. If material is not included in the article's Creative Commons licence and your intended use is not permitted by statutory regulation or exceeds the permitted use, you will need to obtain permission directly from the copyright holder. To view a copy of this licence, visit <http://creativecommons.org/licenses/by/4.0/>.

## References

1. Sung H, Ferlay J, Siegel RL et al (2021) Global cancer statistics 2020: GLOBOCAN estimates of incidence and mortality Worldwide for 36 Cancers in 185 Countries. *CA Cancer J Clin* 71:209–249
2. Leggett B, Whitehall V (2010) Role of the serrated pathway in colorectal cancer pathogenesis. *Gastroenterology* 138:2088–2100
3. JE II, Vermeulen L, Meijer GA et al (2015) Serrated neoplasia-role in colorectal carcinogenesis and clinical implications. *Nat Rev Gastroenterol Hepatol* 12:401–9
4. van Rijn JC, Reitsma JB, Stoker J et al (2006) Polyp miss rate determined by tandem colonoscopy: a systematic review. *Am J Gastroenterol* 101:343–350
5. Zhao S, Wang S, Pan P et al (2019) Magnitude, risk factors, and factors associated with adenoma miss rate of tandem colonoscopy: a systematic review and meta-analysis. *Gastroenterology* 156:1661–1674.e11
6. Pohl H, Robertson DJ (2010) Colorectal cancers detected after colonoscopy frequently result from missed lesions. *Clin Gastroenterol Hepatol* 8:858–864
7. Bateman AC (2021) The spectrum of serrated colorectal lesions—new entities and unanswered questions. *Histopathology* 78:780–790
8. Macken E, Van Dongen S, De Brabander I et al (2019) Post-colonoscopy colorectal cancer in Belgium: characteristics and influencing factors. *Endosc Int Open* 7:E717–e727
9. Kaminski MF, Regula J, Kraszewska E et al (2010) Quality indicators for colonoscopy and the risk of interval cancer. *N Engl J Med* 362:1795–1803
10. Corley DA, Jensen CD, Marks AR et al (2014) Adenoma detection rate and risk of colorectal cancer and death. *N Engl J Med* 370:1298–1306
11. Wolfe JM, Reinecke A, Brawn P (2006) Why don't we see changes?: The role of attentional bottlenecks and limited visual memory. *Vis cogn* 14:749–780
12. Memmert D, Unkelbach C, Ganns S (2010) The impact of regulatory fit on performance in an inattentive blindness paradigm. *J Gen Psychol* 137:129–139
13. Buchner AM, Shahid MW, Heckman MG et al (2011) Trainee participation is associated with increased small adenoma detection. *Gastrointest Endosc* 73:1223–1231
14. Lee CK, Park DI, Lee SH et al (2011) Participation by experienced endoscopy nurses increases the detection rate of colon polyps during a screening colonoscopy: a multicenter, prospective, randomized study. *Gastrointest Endosc* 74:1094–1102

15. Aslanian HR, Shieh FK, Chan FW et al (2013) Nurse observation during colonoscopy increases polyp detection: a randomized prospective study. *Am J Gastroenterol* 108:166–172
16. Ashat M, Klair JS, Singh D et al (2021) Impact of real-time use of artificial intelligence in improving adenoma detection during colonoscopy: a systematic review and meta-analysis. *Endosc Int Open* 9:E513–e521
17. Hassan C, Spadaccini M, Iannone A et al (2021) Performance of artificial intelligence in colonoscopy for adenoma and polyp detection: a systematic review and meta-analysis. *Gastrointest Endosc* 93:77–85.e6
18. Spadaccini M, Iannone A, Maselli R et al (2021) Computer-aided detection versus advanced imaging for detection of colorectal neoplasia: a systematic review and network meta-analysis. *Lancet Gastroenterol Hepatol* 6:793–802
19. Antonelli G, Gkolfakis P, Tziatzios G et al (2020) Artificial intelligence-aided colonoscopy: recent developments and future perspectives. *World J Gastroenterol* 26:7436–7443
20. Pfeifer L, Neufert C, Leppkes M et al (2021) Computer-aided detection of colorectal polyps using a newly generated deep convolutional neural network: from development to first clinical experience. *Eur J Gastroenterol Hepatol*
21. Axon A, Diebold MD, Fujino M, Fujita R, Genta RM, Gonvers JJ, Guelrud M, Inoue H, Jung M, Kashida H, Kudo S (2005) Update on the Paris classification of superficial neoplastic lesions in the digestive tract. *Endoscopy* 37(6):570–8
22. Wang P, Berzin TM, Glissen Brown JR et al (2019) Real-time automatic detection system increases colonoscopic polyp and adenoma detection rates: a prospective randomised controlled study. *Gut* 68:1813–1819
23. Wang P, Liu P, Glissen Brown JR et al (2020) Lower adenoma miss rate of computer-aided detection-assisted colonoscopy vs routine white-light colonoscopy in a prospective tandem study. *Gastroenterology* 159:1252–1261.e5
24. Wang P, Liu X, Berzin TM et al (2020) Effect of a deep-learning computer-aided detection system on adenoma detection during colonoscopy (CADe-DB trial): a double-blind randomised study. *Lancet Gastroenterol Hepatol*
25. Liu P, Wang P, Glissen Brown JR et al (2020) The single-monitor trial: an embedded CADe system increased adenoma detection during colonoscopy: a prospective randomized study. *Therap Adv Gastroenterol* 13:1756284820979165
26. Repici A, Badalamenti M, Maselli R et al (2020) Efficacy of real-time computer-aided detection of colorectal neoplasia in a randomized trial. *Gastroenterology* 159:512–520.e7
27. Liu WN, Zhang YY, Bian XQ et al (2020) Study on detection rate of polyps and adenomas in artificial-intelligence-aided colonoscopy. *Saudi J Gastroenterol* 26:13–19
28. Shaukat A, Colucci D, Erisson L et al (2021) Improvement in adenoma detection using a novel artificial intelligence-aided polyp detection device. *Endosc Int Open* 9:E263–e270
29. Su JR, Li Z, Shao XJ et al (2019) Impact of real-time automatic quality control system on colorectal polyp and adenoma detection: a prospective randomized controlled study (with video). *Gastrointest Endosc*
30. Mohan BP, Facciorusso A, Khan SR et al (2020) Real-time computer aided colonoscopy versus standard colonoscopy for improving adenoma detection rate: a meta-analysis of randomized-controlled trials. *EClinical Medicine* 29
31. Carr NJ, Mahajan H, Tan KL et al (2009) Serrated and non-serrated polyps of the colorectum: their prevalence in an unselected case series and correlation of BRAF mutation analysis with the diagnosis of sessile serrated adenoma. *J Clin Pathol* 62:516–518
32. Lash RH, Genta RM, Schuler CM (2010) Sessile serrated adenomas: prevalence of dysplasia and carcinoma in 2139 patients. *J Clin Pathol* 63:681–686
33. Hann A, Troya J, Fitting D (2021) Current status and limitations of artificial intelligence in colonoscopy. *United European Gastroenterology Journal* 9:527–533
34. Brand M, Troya J, Krenzer A et al (2022) Frame-by-frame analysis of a commercially available artificial intelligence polyp detection system in full-length colonoscopies. *Digestion* 103:378–385
35. Bernal J, Tajkbaksh N, Sanchez FJ et al (2017) Comparative validation of polyp detection methods in video colonoscopy: results from the MICCAI 2015 endoscopic vision challenge. *IEEE Trans Med Imaging* 36:1231–1249
36. Hassan C, Badalamenti M, Maselli R et al (2020) Computer-aided detection-assisted colonoscopy: classification and relevance of false positives. *Gastrointest Endosc* 92:900–904.e4

**Publisher's Note** Springer Nature remains neutral with regard to jurisdictional claims in published maps and institutional affiliations.