

BMJ Open Cognitive decline in dementia with Lewy bodies: a 5-year prospective cohort study

A Rongve,^{1,2} H Soennesyn,³ Ragnhild Skogseth,⁴ Ragnhild Oesterhus,³ T Hortobágyi,^{5,6} Clive Ballard,⁶ B H Auestad,⁷ D Aarsland^{3,8}

To cite: Rongve A, Soennesyn H, Skogseth R, *et al*. Cognitive decline in dementia with Lewy bodies: a 5-year prospective cohort study. *BMJ Open* 2016;**6**: e010357. doi:10.1136/bmjopen-2015-010357

► Prepublication history and additional material is available. To view please visit the journal (<http://dx.doi.org/10.1136/bmjopen-2015-010357>).

Received 23 October 2015
Revised 25 January 2016
Accepted 11 February 2016

ABSTRACT

Objectives: We report the cognitive decline in persons diagnosed with mild dementia with Lewy bodies (DLB) and mild Alzheimer's disease (AD) during 5 years of annual follow-ups.

Methods: Patients were recruited into the study from geriatric, psychiatric and neurology clinics in Western Norway during 2005–2013. They were diagnosed according to clinical consensus criteria, based on standardised clinical rating scales. Autopsy-based diagnoses were available for 20 cases. Cognitive decline for up to 5 years was assessed using the Clinical Dementia Rating (CDR) scale and the Mini-Mental State Examination (MMSE). Survival analysis including Cox regression (time to reach severe dementia) and linear mixed-effects (lme) modelling were used to model the decline on MMSE.

Results: At least one follow-up assessment was available for 67 patients with DLB and 107 patients with AD, with a median follow-up time of 4.3 years. The time to reach severe dementia was significantly shorter in DLB (median 1793 days) compared with AD (1947 days; $p=0.033$), and the difference remained significant in the multiple Cox regression analysis ($HR=2.0$, $p<0.02$). In the adjusted lme model, MMSE decline was faster in DLB (annual decline 4.4 points) compared with AD (3.2 points; $p<0.008$).

Conclusions: Our findings show that from the mild dementia stage, patients with DLB have a more rapid cognitive decline than in AD. Such prognostic information is vital for patients and families and crucial for planning clinical trials and enabling health economic modelling.

INTRODUCTION

Few longitudinal cohort studies of dementia with Lewy bodies (DLB) exist compared with in other neurodegenerative diseases.^{1 2} Accordingly, the long-term course and prognostic factors in DLB are not known. Early observations suggested that patients with DLB had a faster cognitive decline as compared with Alzheimer's disease (AD),³ but subsequent studies have reported

Strengths and limitations of this study

- We report the largest dementia with Lewy bodies (DLB) cohort with the longest follow-up to date.
- We followed all included participants every 12 months until study end or death.
- We applied highly standardised diagnostic procedures including the Mayo fluctuation and Mayo sleep scales to diagnose DLB.
- We provide autopsy-proven diagnoses for 9% of included cases.
- Clinical dementia diagnoses were revised after 5 years of annual follow-ups based on all available information.

contradictory results. In a recent meta-analysis, we found no significant difference in the rate of decline on Mini-Mental State Examination (MMSE) in DLB and AD.⁴ However, this conclusion was based on few studies with small sample sizes and short follow-up time. Understanding the disease course is vital to give patients and families a better understanding of prognosis and is also essential to underpin accurate design and powering of clinical trials and to enable health economic models for cost-effectiveness. We therefore aimed to assess the rate of decline for up to 5 years in DLB in comparison to AD. In addition to the MMSE, which may be less sensitive to the cognitive changes in DLB compared with AD,⁵ we used a broader assessment of cognition and function, the Clinical Dementia Rating (CDR) scale,⁶ using time to reach severe dementia, CDR stage 3, as a primary outcome.

METHODS

Design

We used a prospective design, and patients with DLB were diagnosed clinically using extensive and standardised diagnostic investigations and also recruiting for postmortem



CrossMark

For numbered affiliations see end of article.

Correspondence to

Dr A Rongve;
arvid.rongve@helse-fonna.no

confirmation. Our aim was to allow for long follow-up time from the time of diagnosis with annual assessment points. There is yet no consensus regarding the best cognitive scale to track cognitive decline in DLB, and thus we used CDR as our measure of cognitive functioning.

Participants and inclusion

In the Dementia Study of western Norway (DemVest-study) all referrals to geriatric and psychiatric clinics in Hordaland and Rogaland counties (with 448 343 (13.4% aged 67 or higher) and 393 104 (11.5%, 67+) inhabitants, respectively) underwent a full medical examination for a first-time diagnosis of mild dementia during 2005–2007, and consecutively invited to participate if inclusion and exclusion criteria were fulfilled. All neurology clinics in the region were invited to refer patients with suspected dementia to the study. The referral pattern varies among general practitioners (GPs), but most dementia patients are diagnosed by their local GP. To reduce risk for referral bias, GPs in the area were therefore contacted by letter prior to study start and invited to refer all patients with suspect dementia to one of the participating centres. Subsequently we included DLB cases selectively from 2007 until 2013 to increase sample size.⁷ Patients were followed annually with a structured interview, caregiver interview and cognitive tests. Drug treatment was provided as clinically indicated by the treating physician, but it was recommended that patients with AD and DLB should receive treatment with cholinesterase inhibitor, and most patients were treated from inclusion in the study.

Inclusion and exclusion criteria

To select patients with mild dementia only, a MMSE score of at least 20 or a CDR global score=1 was required for inclusion. Patients without dementia or with acute delirium or confusion, terminal illness, recently diagnosed with a major somatic illness which according to the clinician would significantly impact on cognition, function or study participation, previous bipolar disorder or psychotic disorder were excluded. Patients were recruited for brain donation and subsequent pathological diagnosis. Only patients with probable or definite DLB and AD were included in this study.

Diagnostic and clinical baseline examination

A research clinician performed a structured clinical interview of patients and caregivers regarding demographics, previous diseases and drug history. The assessment procedure included a detailed history using a semistructured interview, clinical examination including physical, neurological, psychiatric and a detailed neuropsychological test battery, routine of blood and brain MRI. Dopamine transporter SPECT scans were available for 34 patients with DLB, and was clearly abnormal in 26 and borderline in 2 cases. The final clinical diagnosis was made by two of the study clinicians based on all available information, including pathological diagnosis

when available, according to the consensus criteria for DLB and AD.^{8,9} The diagnoses were re-evaluated several times during the study period, and a final diagnosis was made in 2014 (see ref. ⁷ for further details of the inclusion and diagnostic and baseline procedures). A pathological diagnosis was available in 20 patients (see below).

Structured rating scales for detecting the DLB core features were systematically administered to all patients by dedicated study physicians or research nurses. Annual meetings between study clinicians were held to maintain similar procedures. Fluctuating cognition was rated using the Clinician Assessment of Cognitive Fluctuations¹⁰ or the Mayo Fluctuation Questionnaire.¹¹ REM sleep behaviour disorder (RBD) was diagnosed if there was a history of recurrent nocturnal dream enactment behaviour recorded from the Mayo Sleep Questionnaire (MSQ).¹² The Unified Parkinson's Rating Scale item 3 (UPDRS-3)¹³ was used to measure parkinsonian symptoms. Activities of daily living were assessed using the Rapid Disability Rating Scale-2.¹⁴ The Neuropsychiatric Inventory (NPI) was applied to assess visual hallucinations and other psychiatric symptoms.¹⁵ The Cumulative Illness Rating Scale (CIRS)¹⁶ was applied to measure the total burden of all other diseases.

Cognitive decline

Cognitive decline was measured using the CDR scale. The CDR examines six different areas in dementia: memory, orientation, judgement and problem solving, community affairs, home and hobbies, and personal care. All six items are scored from 0 to 3, with 0 corresponding to no dementia, 0.5 mild cognitive impairment, 1 mild dementia, 2 moderately severe dementia and 3 severe dementia. A global score 0–3 was calculated based on an available online algorithm. The time from baseline to the first assessment with an overall CDR score of 3, that is, severe dementia, was recorded. The CDR was scored by a trained research physician, and the scoring was made independent of the other cognitive tests, by the same clinician at every occasion to the extent possible. In addition, cognition was also measured using the MMSE, administered by a trained research nurse. Decline was calculated from baseline to study end, death or first assessment with MMSE score equal to 0.

Pathological diagnosis and APOE genotyping

Brain dissection, regional sampling, and tissue processing and staining are done following standard protocols including BrainNet Europe and Brains for Dementia Research UK.^{17,18} Specific stain for identification of AD-type and LB pathologies (modified Bielschowsky), and immune histochemical procedures were used for detection of hyperphosphorylated τ (pretangles, tangles, dystrophic neurites and neuropil threads), amyloid β (diffuse and classical plaques and amyloid angiopathy), and α -synuclein (LB and Lewy neurites), according to standard immunohistochemical protocols. Each case was assessed by an experienced neuropathologist (TH) who

was blinded to clinical data. Pathological diagnosis was made according to international consensus criteria for DLB⁸ and AD.^{8 17 19–21} The presence of possible coexisting TAR DNA-binding protein 43 (TDP-43) proteinopathy was assessed according to guidelines,²² and microscopic vascular lesions considered and recorded.²³ A neuropathological diagnosis was available for a total 20 of the included patients.

APOE genotyping was performed in 125 patients,²⁴ and the proportion with at least one *e4* allele was 64% in both groups.

Statistics

Baseline characteristics are presented and group comparisons made using t test, Mann-Whitney or χ^2 tests as appropriate. We applied Kaplan-Meier survival analysis and the log-rank test. Time to CDR=3 was analysed and compared between the groups using Cox regression analysis, and clinical predictors of course were identified. These data have some indication of non-proportional hazards at about 5 years which may lead to unreliable results. To avoid problems caused by this, we partitioned the time axis by censoring at 5 years as suggested in chapter 6 of Therneau and Grambsch.²⁵ The cox regression was performed using these extra censored data. This removed signs of possible non-proportional hazards according to tests based on scaled Schoenfeldt residuals. We also analysed time to CDR=3 or death as a clinically relevant outcome. Longitudinal analysis with linear mixed-effects (lme) model, adjusting for age, sex, CIRS, duration and baseline MMSE, and CDR was applied using random intercept and slope model. This produced an adequate model for the data according to analyses of the residuals and random effects. Need for interaction terms in the model was checked with clear non-significant results. Possible non-linear patterns in decline were checked by adding a time squared term to the model. This was also clearly insignificant. It may be argued that the more frequent drop-out in the DLB group due to death as compared with the AD group occur at random²⁶ and thus the lme modelling approach adjusts for this in an appropriate way in this situation. To study the impact of different death rates on longitudinal outcome, we also tried joint modelling where the lme model is linked to a cox proportional hazards model for survival. Although a significant correlation between death rates and longitudinal outcome was registered, this death rate-adjusted lme analysis showed practically the same results as the ordinary lme analysis. All statistical analyses were performed using the program packages SPSS and R. (Team RC. A language and environment for statistical computing. Vienna, Austria: R Foundation for Statistical Computing; 2013. URL <http://www.R-project.org>).

RESULTS

Follow-up data were available for 107 patients with probable or definite (n=12) AD and 67 with probable or

definite (n=8) DLB (see figure 1). Demographic and clinical baseline characteristics are shown in table 1. Patients with DLB were more commonly males, had slightly longer disease duration, and as expected higher NPI and UPDRS motor scores. Patients with DLB also had higher CIRS scores than the AD group. Duration of follow-up varied according to time of study inclusion and time of death. One hundred and eleven of the patients died, but there were no drop-outs for other reasons. Median follow-up time was 1577 days (4.3 years), and the number of person-years was 232 for DLB and 479 for AD. Seventy-one (40.8%) patients reached a global CDR score of 3, 28 (41.8%) diagnosed with DLB and 43 (40.2%) diagnosed with AD (p=0.834).

The median time to severe dementia, defined as CDR=3, was 1947 days in AD and 1793 days in DLB (p=0.033; see figure 2). The mortality rates were significantly higher in DLB than in AD. As can be seen in figure 3, there were large variability in the cognitive decline, some having a short time to reach the severe dementia stage whereas others remained at the mild or moderate stage for several years. The unadjusted and adjusted Cox models (table 2) show that a diagnosis of DLB was associated with shorter time to severe dementia

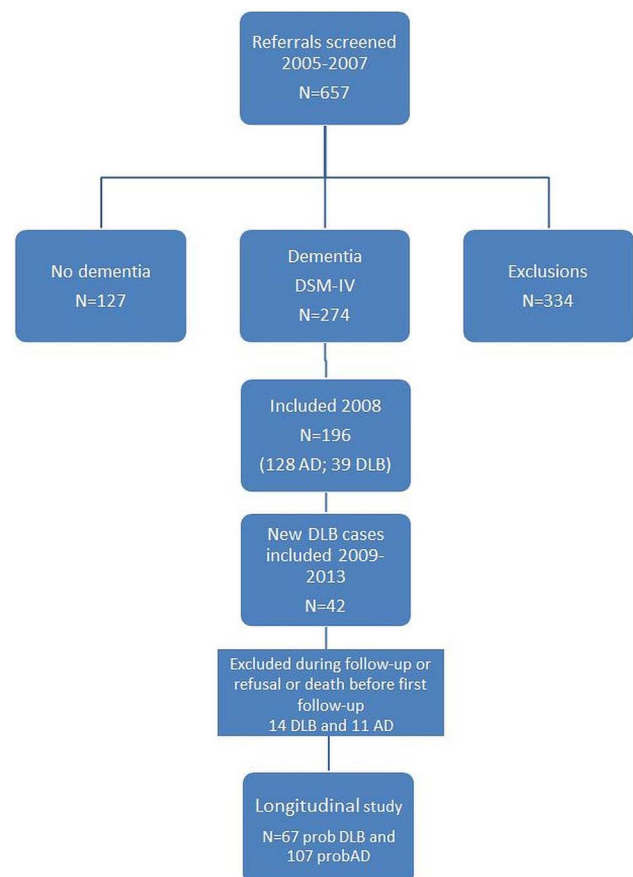


Figure 1 Flowchart showing screening and inclusions. AD, Alzheimer's disease; DLB, dementia with Lewy bodies; DSM-IV, Diagnostic and Statistical Manual of Mental Disorders, Fourth Edition.

Table 1 Baseline characteristics of the cohort

	Probable AD (n=107)	Probable DLB (n=67)	p Value
Age	75.1 (7–9)	76.1 (7–2)	0.598
Female, N (%)	80 (74.8)	32 (47.8)	<0.0005
Education, years, mean, SD	9.8 (3.0)	9.5 (2.7)	0.512
CDR global score, median, IQR	1.00 (0.50)	1.00 (0.50)	0.217
MMSE total score, mean, SD	23.6 (2.3)	23.5 (3.0)	0.870
Duration of symptoms before baseline, years, mean, SD	2.0 (2.0)	2.6 (1.9)	0.011
NPI total scores, mean, SD	15.7 (16.9)	22.8 (19.1)	0.006
CIRS score, mean, SD	5.1 (2.1)	6.3 (2.6)	0.004
UPDRS III scores, mean, SD	1.5 (2.3)	14.2 (13.0)	<0.0005
Antipsychotics, N (%)	4 (3.7)	10 (14.9)	0.008
Antiparkinsonian medication, N (%)	0 (0)	9 (13.4)	<0.005
Antidementia medication, N (%)	68 (63.6)	38 (56.7)	0.436
Death during follow-up, N (%)	59 (55.1)	52 (77.6)	0.003

AD, Alzheimer's dementia; CDR, Clinical Dementia Rating; CIRS, Cumulative Illness Rating Scale; DLB, Dementia with Lewy bodies; MMSE, Mini-Mental State Examination; N, number; NPI, Neuropsychiatric Inventory; UPDRS, Unified Parkinson's Disease Rating Scale-motor subscale.

(HR 2.35, $p < 0.002$ and 2.04, $p = 0.020$). Median time until CDR=3 or death was 1861 days in probable AD and 1210 days in probable DLB ($p < 0.0005$; see figure 4). In the fully adjusted Cox regression model, higher baseline age, longer duration of symptoms and higher CDR global scores predicted shorter time until CDR=3 or death in addition to having a DLB diagnosis ($p = 0.039$; see online supplementary material).

The progression of MMSE is shown in figure 3. There is a significant decline in MMSE score over time. The diagnosis X time (years) interaction is significant ($p = 0.008$; table 3), indicating that the decline over time differs between the two groups. In the adjusted linear mixed model, taking into account potential confounders (see table 3), MMSE is reduced on average by 3.2 points per year in the AD group, whereas in the DLB group, the decrease is more rapid; on average 4.4 points per year. The slope is also significantly affected by baseline MMSE level and baseline CDR global scores. The individual and mean group MMSE scores over the study period are

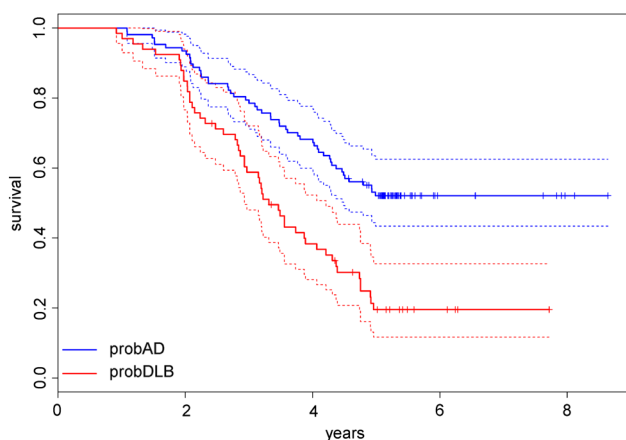


Figure 2 Survival until severe dementia in dementia with Lewy bodies (DLB) and Alzheimer's disease (AD).

shown in figure 3. Figure 3 also illustrates the variability in the rate of decline, which is slightly higher in DLB (SD of annual decline 2.2, range -5.9 to 4.1) compared with AD (SD 1.6, range -4.1 to 3.3). We conducted the lme analysis also including antidementia drug use in the model, which was not associated with decline and did not change the main findings (results not included).

Among the 20 patients with neuropathological analysis, seven of the nine with a clinical diagnosis of DLB had their diagnosis confirmed neuropathologically, whereas two were changed to AD. In addition, one patient with a clinical diagnosis of AD was changed to DLB. Coexisting moderate or severe AD pathology was present in most of these cases. Ten of the 11 patients with clinical diagnosis of AD had their diagnosis confirmed with severe AD pathology (Braak τ stage 6), although some degree of coexisting DLB pathology was noted in 4, and 3 patients had mild TDP-43 pathology limited to the amygdala.

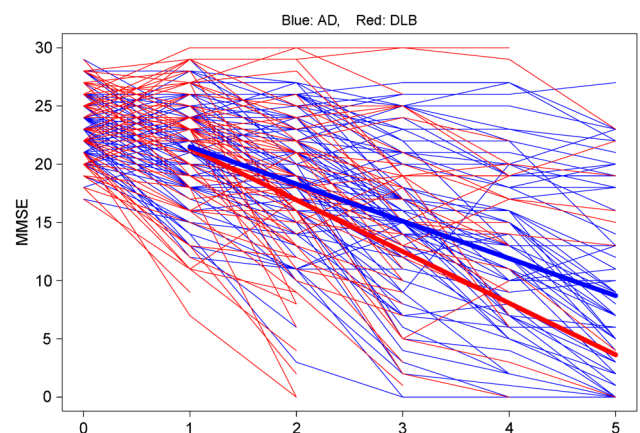


Figure 3 Longitudinal declines on individual MMSE scores and estimated lme-results. AD, Alzheimer's disease; DLB, dementia with Lewy bodies; MMSE, Mini-Mental State Examination.

Table 2 Factors associated with time to reach severe dementia

	Unadjusted HRs	p Value	Adjusted HRs	p Value
Age at baseline, years	1.00 (0.97 to 1.04)	0.781		
Diagnoses, DLB vs AD	2.35 (1.39 to 3.99)	0.002	2.04 (1.12 to 3.72)	0.020
Sex, females vs males	0.6 (0.35 to 1.02)	0.057	0.83 (0.45 to 1.53)	0.556
Education in years	1.01 (0.92 to 1.10)	0.907		
Duration of symptoms in years	1.13 (1.00 to 1.27)	0.048	1.15 (1.01 to 1.29)	0.030
MMSE total scores	0.79 (0.71 to 0.89)	<0.0005	0.82 (0.73 to 0.93)	0.002
CIRS total scores	1.02 (0.90 to 1.16)	0.745		
CDR global scores	3.26 (1.80 to 5.89)	<0.0005	2.42 (1.26 to 4.65)	0.008

Cox regression, time until CDR=3. HRs presented with 95% CI.

AD, Alzheimer's dementia; CDR, Clinical Dementia Rating; CIRS, Cumulative Illness Rating Scale; DLB, Dementia with Lewy bodies; MMSE, Mini-Mental State Examination.

DISCUSSION

In the largest prospective longitudinal long-term cohort study in DLB to date, the time to reach severe dementia was shorter, and the rate of cognitive decline was faster, in DLB than in AD. This adds to previous findings that patients with DLB have a particularly severe prognosis, including more reduced quality of life,²⁷ higher health-related costs,²⁸ shorter time to nursing home admission,²⁹ more severe caregiver burden³⁰ and shorter survival³¹ than patients with AD, all factors which are also crucial for health economic modelling. However, compared with these outcome measures, the difference in cognitive decline is less striking, suggesting that aspects other than the rate of cognitive decline are more important for clinical milestones such as nursing home admission and death. Finally, unlike other studies, we used a different outcome (time to CDR=3) also in applying a more sophisticated statistical approach.

Previous studies comparing the cognitive course in DLB and AD have shown inconsistent results. In a recent systematic review, we identified 18 longitudinal studies.⁴ Some studies reported no difference in the rate of cognitive decline, whereas some reported faster decline in DLB and others a faster decline in AD. In addition, there seemed to be differential decline of the

different cognitive domains, with more rapid memory decline in AD, and more rapid executive (verbal fluency) in DLB. In a meta-analysis including the six studies reporting decline on MMSE, no significant differences were found between AD and DLB. However, these 18 studies were based on small DLB groups and had a short follow-up period, which may lead to insecure estimates of decline. In addition, several studies included patients who were already at a moderate or severe degree of dementia, which may also influence the rate of subsequent decline.

Although our cohort is the largest prospectively studied DLB cohort, the number of patients is nevertheless small and thus statistical power to detect differences is limited. In addition, the relatively high mortality in DLB leads to few patients completing the full 5-year observation period. DLB is a heterogeneous disease and patients may thus be referred to clinics of different medical specialties, including psychiatry, neurology, geriatric medicine and sleep medicine. Since it is possible that the symptom profile may be related to rate of decline, findings from different studies may vary according to recruitment procedures. The inclusion of referrals compared with community-based patients likely lead to

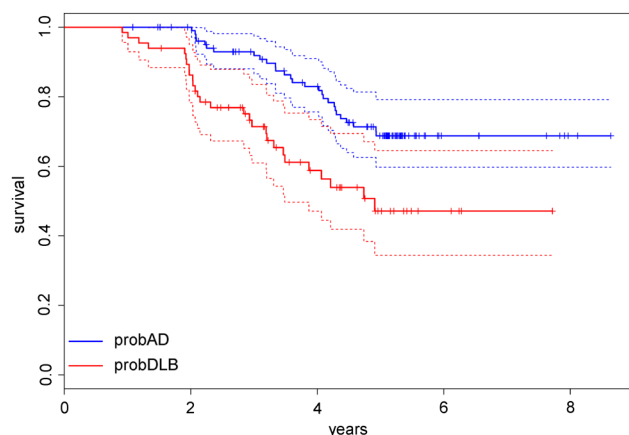


Figure 4 Survival until severe dementia or death in Alzheimer's disease (AD) and dementia with Lewy bodies (DLB).

Table 3 Factors associated with the rate of decline on MMSE

	Coefficient	p Value
Follow-up time in years	-3.20 (-3.69, -2.7)	<0.0005
Diagnosis	1.63 (0, 3.27)	0.050
Sex	0.41 (-1.01, 1.83)	0.571
Age in years	0.04 (-0.05, 0.13)	0.402
CIRS scores at baseline	-0.01 (-0.3, 0.29)	0.957
Duration of symptoms before baseline in years	-0.10 (-0.41, 0.21)	0.524
MMSE scores at baseline	0.83 (0.58, 1.08)	<0.0005
CDR at baseline	-2.48 (-4.16, -0.8)	0.004
Diagnosis x year	-1.24 (-2.15, -0.32)	0.008

Linear mixed effects analysis, covariate adjusted.

CDR, Clinical Dementia Rating; CIRS, Cumulative illness rating scale; ; MMSE, Mini-Mental State Examination.

more complex AD and DLB cases to be included which may have influenced the findings, and thus our conclusions may not be valid for community-based patients. Furthermore, we took care to include patients from a variety of specialist sources; the main recruitment was from old age psychiatry and geriatric medicine clinics. Neurology clinics were recommended to refer patients to the study, but patients with more severe motor symptoms may still be under-represented, and no patients were referred from internal medicine or sleep clinics. Thus, patients with DLB with primary sleep or autonomous symptoms may not have been included.

We used time to severe dementia as measured by CDR in addition to MMSE as outcome measure. MMSE is less sensitive to the cognitive impairment associated with DLB,³² although may still be sensitive to the rate of change in these patients.³³ In contrast, the CDR captures the full range of functional deficits due to cognition as judged by a trained clinician after interviewing patients and caregivers, and is likely a more accurate and comprehensive measure of severity. However, the CDR was developed for use in AD and has not yet been adequately tested in DLB.

Finally, for the majority of patients, a clinical diagnosis was used, which is not 100% accurate. However, we used DaTSCAN/CIT-SPECT to help in the differentiation between DLB and AD, as well as standardised rating scales for the core and suggestive clinical features of DLB. The longitudinal assessment by the same clinician also increases the diagnostic accuracy. In addition, neuropathological analysis was available for 20 (11%) cases which confirmed the clinical diagnosis in most cases. Antidementia medications like cholinesterase inhibitors and memantine improve cognition in both DLB and AD, but this effect may be longer lasting in DLB as compared with in AD, and the cognitive decline in DLB therefor may be underestimated in our study.³⁴ Parkinsonism in DLB might influence the CDR scores and increase these scores independent of cognition. To conclude, we found that time to reach severe dementia is shorter in DLB compared with AD. This, together with the high mortality and institutionalisation rate and caregiver burden in DLB, underlines the severe prognosis of this common disease. Future studies should explore the course of other key clinical symptoms, including motor and psychiatric symptoms. Detailed prognostic information is vital for patients and families and is essential to underpin accurate design and powering of clinical trials, and is also essential to enable the development of more accurate health economic models for cost-effectiveness, which depend on conversion between different stages of dementia severity.

Author affiliations

¹Department of Research and Innovation, Helse Fonna, Haugesund Hospital, Haugesund, Norway

²Institute of Clinical Medicine, The University of Bergen, Bergen, Norway

³Centre for Age Related Medicine, Stavanger University Hospital, Stavanger, Norway

⁴Department of Geriatric Medicine, Haralds plass Deaconess Hospital, Bergen, Norway

⁵Faculty of Medicine, Department of Neuropathology, Institute of Pathology, University of Debrecen, Debrecen, Hungary

⁶King's College, London, UK

⁷Department of Mathematics and Natural Sciences, Research Department, Stavanger University Hospital and, The University of Stavanger, Stavanger, Norway

⁸Karolinska Institute, Stockholm, Sweden

Twitter Follow Arvid Rongve at @arvidrongve

Contributors AR contributed to the concept and idea, collection of data, writing of the paper and statistical analyses. HS and RS were involved in collection of data and critically reviewing the whole content of the paper. RO was involved in collection of data and critically reviewing the whole paper. TH was involved in neuropathological analysis and diagnosis, writing pathology parts and critically reviewing the whole paper. CB contributed to the concept and idea, critically reviewing the whole paper. BHA was involved in providing the longitudinal statistical analyses and writing the statistical methods section and critically reviewing the paper. DA contributed to the concept and idea, collection of data, writing the paper together with first author AR.

Funding This work was funded through a postdoctoral grant to first author AR from the regional health authorities (Helse Vest). The project was funded by the Western Norway Regional Health Authority. TH received support from Grant No. KTIA_13_NAP-A-II/7, Hungary.

Competing interests None declared.

Ethics approval The study was approved by the Regional Committees for Medical and Health Ethics, approval number 2010/633.

Provenance and peer review Not commissioned; externally peer reviewed.

Data sharing statement Data collection is ongoing, and data sharing is currently limited to members of the study group.

Open Access This is an Open Access article distributed in accordance with the Creative Commons Attribution Non Commercial (CC BY-NC 4.0) license, which permits others to distribute, remix, adapt, build upon this work non-commercially, and license their derivative works on different terms, provided the original work is properly cited and the use is non-commercial. See: <http://creativecommons.org/licenses/by-nc/4.0/>

REFERENCES

1. (JPND) EJP-ND. Multi-centre cohort-studies in Lewy-body dementia: Challenges in harmonizing different clinical and biomarker protocols. [online]. <http://www.neurodegenerationresearch.eu/initiatives/jpnd-alignment-actions/longitudinal-cohorts/call-for-working-groups/call-results/>
2. Smits L, van Harten A, Pijnenburg Y, *et al.* Trajectories of cognitive decline in different types of dementia. *Psychol Med* 2015;45:1051–9.
3. Olichney JM, Galasko D, Salmon DP, *et al.* Cognitive decline is faster in Lewy body variant than in Alzheimer's disease. *Neurology* 1998;51:351–7.
4. Breitve MH, Chwiszczuk LJ, Hynninen MJ, *et al.* A systematic review of cognitive decline in dementia with Lewy bodies versus Alzheimer's. *Alzheimers Res Ther* 2014;6:53.
5. Ala TA, Hughes LF, Kyrouac GA, *et al.* The Mini-Mental State Exam may help in the differentiation of dementia with Lewy bodies and Alzheimer's disease. *Int J Geriatr Psychiatry* 2002;17:503–9.
6. Morris JC. Clinical dementia rating: a reliable and valid diagnostic and staging measure for dementia of the Alzheimer type. *Int Psychogeriatr* 1997;9(Suppl 1):173–6; discussion 177–8.
7. Aarsland D, Rongve A, Nore SP, *et al.* Frequency and case identification of dementia with Lewy bodies using the revised consensus criteria. *Dement Geriatr Cogn Disord* 2008;26:445–52.
8. McKeith IG, Dickson DW, Lowe J, *et al.* Diagnosis and management of dementia with Lewy bodies: third report of the DLB Consortium. *Neurology* 2005;65:1863–72.
9. McKhann G, Drachman D, Folstein M, *et al.* Clinical diagnosis of Alzheimer's disease: report of the NINCDS-ADRDA Work Group under the auspices of Department of Health and Human Services Task Force on Alzheimer's disease. *Neurology* 1984;34:939–44.
10. Walker MP, Ayre GA, Cummings JL, *et al.* The Clinician assessment of fluctuation and the one day fluctuation assessment scale: two

- methods to assess fluctuating confusion in dementia. *Br J Psychiatry* 2000;177:252–6.
11. Ferman TJ, Smith GE, Boeve BF, *et al.* DLB fluctuations: specific features that reliably differentiate DLB from AD and normal aging. *Neurology* 2004;62:181–7.
 12. Boeve BF, Molano JR, Ferman TJ, *et al.* Validation of the Mayo Sleep Questionnaire to screen for REM sleep behavior disorder in an aging and dementia cohort. *Sleep Med* 2011;12:445–53.
 13. Fahn S, R.L. E, Committee. MotUD. Unified Parkinson's Disease Rating Scale. In: Fahn S, Marsden CD, Calne DM, *et al.*, eds. *Recent development in Parkinson's disease*. Florham Park, NJ: MacMillan Health Care Information, 1987:153–63.
 14. Linn MW, Linn BS. The rapid disability rating scale-2. *J Am Geriatr Soc* 1982;30:378–82.
 15. Cummings JL, Mega M, Gray K, *et al.* The Neuropsychiatric Inventory: comprehensive assessment of psychopathology in dementia. *Neurology* 1994;44:2308–14.
 16. Conwell Y, Forbes NT, Cox C, *et al.* Validation of a measure of physical illness burden at autopsy: the Cumulative Illness Rating Scale. *J Am Geriatr Soc* 1993;41:38–41.
 17. Alafuzoff I, Ince PG, Arzberger T, *et al.* Staging/typing of Lewy body related alpha-synuclein pathology: a study of the BrainNet Europe Consortium. *Acta Neuropathol* 2009;117:635–52.
 18. Centre BfDRC. Brains for dementia research [online]. <http://www.brainsfordementiaresearch.org.uk/>
 19. Braak H, Braak E. Neuropathological staging of Alzheimer-related changes. *Acta Neuropathol (Berl)* 1991;82:239–59.
 20. Braak H, Del Tredici K, Rub U, *et al.* Staging of brain pathology related to sporadic Parkinson's disease. *Neurobiol Aging* 2003;24:197–211.
 21. Mirra SS, Heyman A, McKeel D, *et al.* The Consortium to Establish a Registry for Alzheimer's Disease (CERAD). Part II. Standardization of the neuropathologic assessment of Alzheimer's disease. *Neurology* 1991;41:479–86.
 22. Mackenzie IR, Neumann M, Baborie A, *et al.* A harmonized classification system for FTLT-DTP pathology. *Acta Neuropathol* 2011;122:111–13.
 23. Alafuzoff I, Gelpi E, Al-Sarraj S, *et al.* The need to unify neuropathological assessments of vascular alterations in the ageing brain: multicentre survey by the BrainNet Europe consortium. *Exp Gerontol* 2012;47:825–33.
 24. Berge G, Sando SB, Rongve A, *et al.* Apolipoprotein E ϵ 2 genotype delays onset of dementia with Lewy bodies in a Norwegian cohort. *J Neurol Neurosurg Psychiatr* 2014;85:1227–31.
 25. Therneau TM, Grambsch PM. *Modeling survival data: extending the Cox model*: Springer Science & Business Media, 2000.
 26. Little RJ, Rubin DB. The analysis of social science data with missing values. *Sociological Methods Res* 1989;18:292–326.
 27. Böstrom F, Jönsson L, Minthon L, *et al.* Patients with dementia with Lewy bodies have more impaired quality of life than patients with Alzheimer disease. *Alzheimer Dis Assoc Disord* 2007;21:150–4.
 28. Vossius C, Rongve A, Testad I, *et al.* The use and costs of formal care in newly diagnosed dementia: a three-year prospective follow-up study. *Am J Geriatr Psychiatry* 2014;22:381–8.
 29. Rongve A, Vossius C, Nore S, *et al.* Time until nursing home admission in people with mild dementia: comparison of dementia with Lewy bodies and Alzheimer's dementia. *Int J Geriatr Psychiatry* 2014;29:392–8.
 30. Bjoerke-Bertheussen J, Ehrh U, Rongve A, *et al.* Neuropsychiatric symptoms in mild dementia with Lewy bodies and Alzheimer's disease. *Dement Geriatr Cogn Disord* 2012;34:1–6.
 31. Oesterhus R, Soennesyn H, Rongve A, *et al.* Long-term mortality in a cohort of home-dwelling elderly with mild Alzheimer's disease and Lewy body dementia. *Dement Geriatr Cogn Disord* 2014;38:161–9.
 32. Kraybill ML, Larson EB, Tsuang DW, *et al.* Cognitive differences in dementia patients with autopsy-verified AD, Lewy body pathology, or both. *Neurology* 2005;64:2069–73.
 33. Lessig S, Nie D, Xu R, *et al.* Changes on brief cognitive instruments over time in Parkinson's disease. *Mov Disord* 2012;27:1125–8.
 34. Mori E, Ikeda M, Kosaka K. Donepezil for dementia with Lewy bodies: a randomized, placebo-controlled trial. *Ann Neurol* 2012;72:41–52.