

Review

A biopsychosocial model of violence when sleepwalking: review and reconceptualisation

Helen M. Stallman and Andrea Bari

Summary

Violence towards others during sleepwalking is relatively uncommon, but can result in serious injury or even death. Much of the research in this field has focused on the forensic consequences of violence during sleepwalking without sufficient attention to an understanding of the risk factors for violence during sleepwalking and the development of prevention and interventions based on these risk factors. This paper reviews the characteristics of impulsive violence in general and reconceptualises violence during sleepwalking as an extension of this prior vulnerability. We propose a biopsychosocial model of the risk for violence during sleepwalking that is supported through a review of empirical literature both within sleepwalking and violent behaviour more

generally. Biological, psychological and social risk factors are hypothesised to mediate the relationship between sleepwalking and violence. Implications for prevention and treatment of this potentially fatal problem are discussed.

Declaration of interest

None.

Copyright and usage

© The Royal College of Psychiatrists 2017. This is an open access article distributed under the terms of the Creative Commons Non-Commercial, No Derivatives (CC BY-NC-ND) license.

Sleepwalking is relatively common with an estimated lifetime prevalence of 6.9% (95% CI 4.6–10.3).¹ Although sleepwalking is usually a benign condition, it can occasionally result in injury to the sleepwalker or violence towards others. Violence during sleepwalking, however, is considered relatively uncommon, although no epidemiological studies have investigated the prevalence or incidence of violence during sleepwalking specifically, and most case study examples come from the forensic literature. The consequences for the victim of violence from a sleepwalker can range from disturbed sleep to death (e.g. Pololsky²). Violence is defined here as the purposeful use of physical force against another person or property. Injury is defined as a bodily wound. Terminology that has been historically used in the literature, such as self-injury (harm inflicted on oneself) and parasuicide (non-fatal self-harm in which the person deliberately causes injury to him or herself), is not used here as there is little evidence of self-harm during sleepwalking.

Previous research on violence during sleepwalking has tended to group injuries to the self together with directed violence towards objects and people (e.g. Moldofsky *et al*³ and Guilleminault *et al*⁴). To date, the differing aetiologies of injuries to the self or others have not been considered. Violence during sleepwalking occurs during an incidental encounter with, or when the sleepwalker is approached by another person,⁵ rather than the sleepwalker seeking out a specific person. Drawing from the literature on violence in general, violence during sleepwalking would meet the definition of impulsive, reactive type, rather than premeditated or proactive. Reactive aggression is characterised by high levels of autonomic arousal and precipitated by provocation and associated negative emotions, such as fear.^{6,7} Reactive aggression is impulsive and is initiated without regard for any future goal. The fight or flight reactions most frequently described by sleepwalkers to misperceived stimuli (e.g. Pai⁸ and Jackson⁹) would theoretically have the potential to precipitate reactive, impulsive violence by some sleepwalkers, much as it might when people are awake. Injuries to the self that result from moving around with impaired perception and judgement during sleepwalking (e.g. *The Port Macquarie News and Hastings River Advocate*,¹⁰ *The Tenterfield Intercolonial Courier and Fairfield and Wallangarra Advocate*,¹¹ *Barrier Miner*¹²

and *The Advertiser*¹³) are therefore by definition different to impulsive reactions to misperceived stimuli resulting in injuries to others or property and should therefore not be considered together.

To date, there have been no theoretically driven hypotheses about the aetiology of violence during sleepwalking and conclusions have been based solely on correlational research of sleepwalkers (e.g. Ohayon¹⁴). Early research hypothesised that mental illness could explain both sleepwalking and violence during sleepwalking – no evidence has been found to support either hypothesis. Similar to the prevalence of violence while awake, relatively few sleepwalkers ever harm others during episodes of sleepwalking, suggesting that it is not a characteristic of sleepwalking *per se* but perhaps a characteristic of the person who is sleepwalking. No attention has yet been given to the relationship between reactive violence in sleepwalking and reactive violence or risk of violence while awake. A biopsychosocial model of violence during sleepwalking may provide an integrated model that incorporates biological and psychological empirical data on violence and sleepwalking that can inform assessment and treatment of violence involved in sleepwalking. For the purposes of this article, we exclude sleepwalking that is secondary to other conditions, for example, neurological diseases such as Parkinson's disease or dementia. First, we will review the biological basis for impulsive behaviour and compare that with the biological features of sleepwalking. Second, we will compare the psychosocial risk factors for impulsive behaviour with those mentioned in reports of violence during sleepwalking. Third, we will reconceptualise violence during sleepwalking in a model that takes into account the known biopsychosocial risk factors of impulsive violence. Finally, we will discuss implications for assessment and treatment and further research.

Functional neuroanatomy

Functionally, the sleepwalking brain is characterised by a dissociated state which presents electrical and metabolic signatures of both wake and sleep. Electroencephalographic recordings have highlighted increased activation of motor and cingulate cortices in patients with sleep arousal disorders.^{15,16} These recent studies confirm previous single-photon emission computed tomography

(SPECT) investigations that described decreased cerebral blood flow in fronto- and temporoparietal association cortices and increased activation of thalamo-cingulate circuits.^{17,18} The characteristic pattern of brain activity during sleepwalking episodes may explain patients' skilled motor behaviour in the absence of awareness and cognitive control, especially during episodes of reactive violence. Moreover, the failure to activate heteromodal association cortical areas may be responsible for the cognitive and sensory distortions that accompany episodes of violence during sleepwalking. In fact, patients usually do not recognise the victims of their violent attacks even if it is a very close family member and instead direct their aggression to what they think is an intruder.

Impulsive aggression occurs within the context of provocation and resultant emotional arousal. Brain circuitry and neuromodulators are involved in the initiation and suppression of aggressive behaviour.¹⁹ Two areas of the brain have been implicated in the aetiology of impulsive violence – the frontal lobe and the limbic system. Frontal lesions particularly in the orbitofrontal cortex increase the risk of impulsive violence.²⁰ Limbic structures such as the amygdala and the cingulate cortex can be activated excessively to trigger violence. The orbital frontal cortex and anterior cingulate cortex calibrate behaviour to social cues and predict expectancies of reward or punishment,^{21,22} modulating or suppressing aggressive behaviour with potential negative consequences and excessive emotional triggers signalled by the limbic regions such as the amygdala and insula.^{19,23} Siever described a model of violence where emotions deriving from the limbic system, prominently the amygdala, cannot be inhibited by prefrontal structures such as the orbitofrontal and anterior cingulate cortices.¹⁹ Figure 1 shows an adaptation of this model to explain violent behaviour

during sleepwalking. An emotionally provocative stimulus during sleepwalking – for example, one that triggers a fight response – has the potential to result in violence because of reduced activation of inhibitory mechanisms during sleep in at-risk individuals. The auditory and visual impairments and distortions characteristic of sleepwalking may be further disrupted by drugs, alcohol or metabolic disturbances caused by illness. During wakefulness, appraisal of the threatening stimulus will occur in visual and auditory integration parts of the brain and in higher association areas such as the prefrontal, temporal and parietal cortices.¹⁹ The amygdala and related limbic areas process the stimulus in relation to previous conditioning influenced by social and cultural experiences. The hypoactivity of the orbital frontal cortex and cingulate gyrus during non-rapid eye movement sleep and sleepwalking⁵ and the corresponding negative emotions experienced may increase the likelihood of violence during sleepwalking in susceptible individuals because of an absence of modulation of the emotional trigger.²⁴

Neurotransmitters have been implicated in the functioning of the cortical and limbic brain areas that may be associated with increased risk of violence.¹⁹ In the cortical areas, these include reduced serotonin and increased catecholamines, dopamine and norepinephrine. In the limbic areas, they include reduced gamma-aminobutyric acid (GABA), enhanced glutamine and enhanced acetylcholine. It has long been hypothesised that serotonin may inhibit and dopamine may increase violent behaviour.^{25,26}

A substantial proportion of impulsive aggressive behaviour is inherited, as it is the predisposition to sleepwalking.^{27,28} A study of common functional polymorphism in monoamine oxidase A (MAOA) on brain structure and function showed that low expression variant compared with the high expression allele was

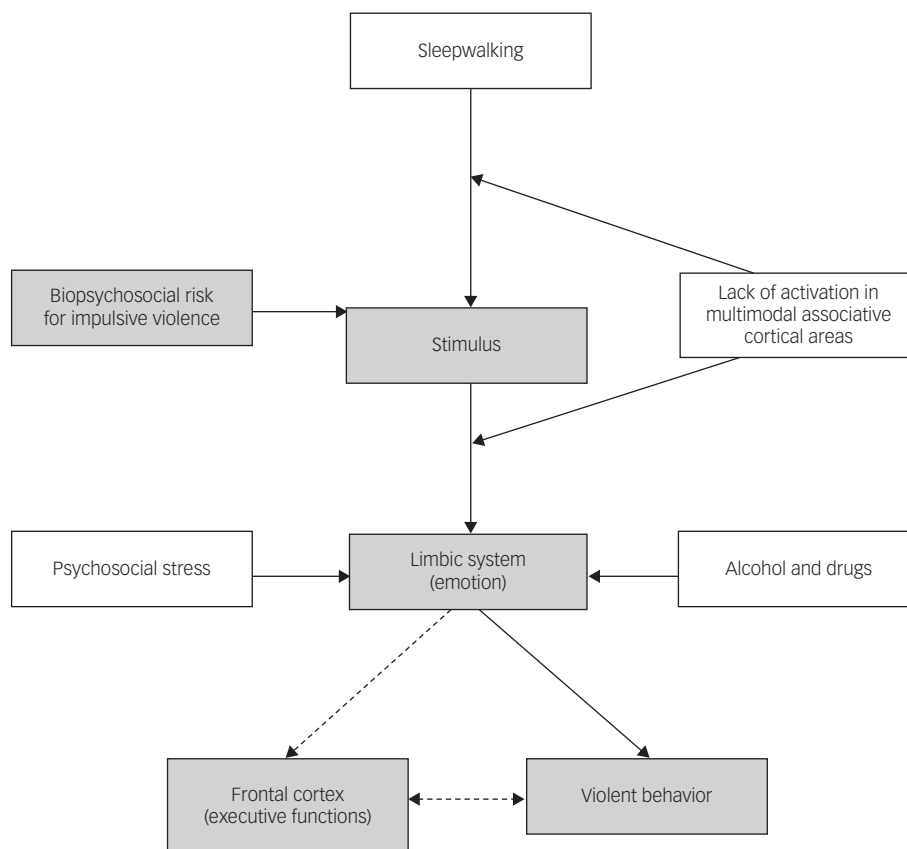


Fig. 1 Initiation and modulation of impulsive violence during sleepwalking. Shaded variables showed the pathway for impulsive violence while awake. Unshaded variables are related to sleepwalking violence. Dashed arrows are normal pathways that modulate violence not available during sleepwalking.

associated with the risk of violent behaviour.²⁹ This predicted pronounced limbic volume reductions and hyperresponsive amygdalae during emotional arousal with diminished reactivity of regulatory prefrontal region. In men, this expression was also associated with changes in orbitofrontal volume, amygdala and hippocampus hyperreactivity during aversive recall, and impaired cingulate activation during cognitive inhibition.

The impaired regulation of forebrain areas that causes emotional hyperexcitability is thought to derive from a faulty modulation of these brain regions by neurotransmitter systems such as serotonin and noradrenaline, which are preferentially oxidised by the MAOA enzyme. Violent offenders have low cerebrospinal fluid (CSF) concentrations of 5-hydroxyindoleacetic acid (5-HIAA) – a marker of serotonin turnover – related to irritability, impaired impulse control and psychasthenia (found in case studies of violent sleepwalkers). These results are supported by several studies that have found a strong link between serotonergic dysregulation and impulsive aggression (reviewed in Bortolato *et al*³⁰ and Coccaro *et al*³¹). In general, low brain levels of serotonin have been linked to aggressive behaviour^{32,33} and to enhanced sensitivity to negative events^{34,35} in both humans and laboratory animals. However, chronic high levels of extracellular serotonin – such as in cases of diminished activity of catalytic enzymes (e.g. MAOA) – may cause a downregulation of serotonergic receptors and other compensatory mechanisms leading to maladaptive responses to stress and repeated episodes of violent and antisocial behaviour.

On the contrary, functional variations in the activity of genes involved in the regulation of the noradrenergic system have been mainly studied in the context of the individual's response to stress. Particularly stressful events are a known potential trigger for sleepwalking episodes in susceptible individuals. Moreover, chronic and acute imbalance in the activity of the noradrenergic system has been associated with impulsivity and diminished behavioural control.³⁶ In children with attention deficit hyperactivity disorder, a polymorphism in the gene coding for dopamine beta hydroxylase – the enzyme responsible for the synthesis of noradrenaline – has been associated with increased impulsive aggression.³⁷ As in the case of serotonin, several studies have highlighted gender differences in the effects of specific noradrenergic gene variants on aggressive behaviour. However, even when gender is taken into account, results are often ambiguous. One study conducted in women found a strong link between polymorphisms in the gene coding for catechol-o-methyltransferase (COMT) – an enzyme involved in the catalytic pathway of catecholamines – and physical aggression.³⁸ This latter result challenges previous accounts describing a preferential effect of COMT gene alterations on aggressive behaviour mostly restricted to male individuals.

Psychosocial risk factors for impulsive violence

In sleepwalkers, impulsive violence and impulsivity in general may have multiple origins. It has been shown that sleepwalkers display impaired inhibitory control as a result of disrupted sleep patterns and sleep deprivation compared with healthy individuals.³⁹ The resulting impulsive behaviour during everyday life might increase the risk of engaging in dangerous activities such as drug use or behavioural addictions (e.g. gambling).⁴⁰ The emotional consequences of such activities can, in turn, increase the incidence of sleepwalking events in susceptible individuals as well as the risk of impulsive violence during these episodes.

In keeping with the emotional sequelae of impulsive behaviour during wakefulness, studies have shown that even acute stressful events can cause an increased sensitivity of brain areas responsible for the individuals' reaction to threatening stimuli. In particular,

amygdala activation displays a diminished specificity for negative valence and increased responsivity to non-threatening events,⁴¹ possibly leading to unmotivated violent reactions.

Substance use and impulsivity^{42–44} contribute to both cognitive distortions and disinhibition that precipitate impulsive violence.¹⁹ Several classes of drugs of misuse are known to be risk factors for impulsive and aggressive behaviour, both during intoxication and withdrawal.⁴⁵ However, as exemplified above, the relationship between substance use and violent aggression during sleepwalking should be considered not only as a possible precipitating factor but also as a consequence of impulsive traits already present in the perpetrating individual. In fact, impulsive personality traits are strongly linked to substance use and addiction.⁴⁰

Other psychosocial risk factors for violence when sleepwalking include subthreshold daytime risk factors, such as poor verbal skills or low education⁴⁶ – evidenced by shouting or temper tantrums – the experience of normalisation of aggression, such as with the military, or prior experience of violence, such as child maltreatment,⁴⁷ family conflict⁴⁸ or cognitive schema.⁴⁹ These biopsychosocial risk factors are summarised in Appendix 1.

Prevention and safety

Safety must be the first consideration for people living with an individual at risk of violence during sleepwalking episodes. A number of steps can be taken to reduce the risk of harm from violence during sleepwalking. Sleeping in a separate room with a locked door would be important until the person is no longer deemed to be at risk of sleepwalking violence. All obvious weapons, such as guns, knives and bats, should be removed from the sleepwalker's bedroom and if possible from the house. Sleepwalkers with known risk factors for violence should avoid alcohol and drug use or at least limit their intake to reduce risk. Finally, exposure to stressful social situations and sleep deprivation should be minimised. When this is not possible, patients may counteract the negative emotional consequences of such events with pharmacological aids, under the guidance of a physician.

Future research priorities

The proposed model of the relationship between biopsychosocial risk factors for impulsive violence and violence during sleepwalking can be used to guide empirical research. Initial efforts should focus on the degree of biopsychosocial risk factors in violent sleepwalkers. Correlational studies that examine the degree of co-occurrence between violent episodes during sleepwalking and impulsive, reckless behaviour during wakefulness may shed light on the underlying causes of aggressive violence during sleepwalking. Although the model depicts biopsychosocial risk factors as the vulnerability to violence during sleepwalking, this has yet to be demonstrated empirically. We believe this is an important first step in understanding the relationship between biopsychosocial risk factors and sleepwalking violence. It will be important to test this model with clinical and community samples to avoid confounding secondary gains that may be present in forensic populations. This will also enable the model to be applied to the breadth of violent sleepwalking behaviour, rather than just the extreme, homicidal cases that appear in the forensic literature.

Assessment

Published case studies typically lack the rigor of a thorough biopsychosocial evaluation of violence in sleepwalking. Because the model infers that risk for violence while sleepwalking develops

from the risks for impulsive behaviour while awake coupled with the vulnerabilities of sleepwalking, it is important that assessment includes all vulnerabilities and low-level impulse-control problem behaviours during waking – for example, temper tantrums, shouting when frustrated, difficulty negotiating with others – rather than just involving clinical disorders. It would be advantageous for the assessment to be conducted independently with multiple informants including people living in the same house and family. Components of a biopsychosocial model assessment are shown in Appendix 2.

Treatment

Although there are no evidence-based interventions for sleepwalking,⁵¹ there are a range of psychological and pharmacological interventions that may address the risk factors for violence during sleepwalking. Parent training, based on social learning theory, is effective for paediatric temper tantrums and conduct problems⁵² and may be an important early intervention for sleepwalkers with impulsivity problems to prevent violent incidents in adulthood. Cognitive-behavioural therapy is useful for impulse-control, interpersonal difficulties and antisocial behaviour.⁵³ Motivational interviewing is useful for enhancing intrinsic motivation to reduce substance use by exploring and resolving ambivalence and may therefore be useful for related substance use⁵⁴ and may be particularly helpful for sleepwalkers who may not have a substance use disorder but substance use increases the likelihood of them being violent while sleepwalking. Non-emotional training that has been shown to induce changes in amygdala reactivity to aversive information and alter amygdala-prefrontal connectivity⁵⁵ may also be a promising intervention. There are a range of pharmacological interventions that modulate neurotransmitters, for example selective serotonin reuptake inhibitors (SSRIs) to increase serotonin availability in prefrontal regions, inhibiting the subcortical regions,⁵⁶ mood stabilisers and anticonvulsants that alter glutamatergic or GABAergic balance, reducing irritability and impulsivity.⁵⁷ Pharmacological interventions should be used with caution until there is an evidence base for their effectiveness with violent sleepwalkers, as they may increase the likelihood of sleepwalking (see Stallman *et al*⁵⁸ for a review) or other sleep problems.

Summary

Sleepwalking can occasionally include violent behaviour towards others. The aetiology of this is not well understood. The aim of this paper was to integrate the biological, neurological and psychological literature on reactive violence and sleepwalking to propose a biopsychosocial model of violence during sleepwalking. The model suggests that vulnerable sleepwalkers may be at risk for violence during sleepwalking because of impaired auditory and visual perception that occurs in both sleepwalking and reactive violence. The inactivation of brain areas responsible for higher cognitive functions such as impulse control and the hyperreactivity of lower-level systems involved in aggressive and defensive behaviour may underlie the manifestation of violent episodes during sleepwalking. Genetically determined or acquired imbalances in neurotransmitters and neuromodulatory systems that play an important role both in the transition between sleep and wakefulness and in the regulation of emotions and impulses are also hypothesised to contribute to the emergence of aggressive violence in sleepwalkers. Although these pre-existing conditions represent biological risk factors, episodes of violence during sleepwalking are usually described during periods of intense psychological stress which may act as a trigger for negative emotions and violent

reactions to perceived threat. This theoretical model may also account for conflicting thoughts around the role of substance use in sleepwalking. Research is needed to test the model in both community and forensic populations. It has significant implications and opportunities for treatment options if it is proven.

Helen M. Stallman, PhD, DClinPsych, Centre for Sleep Research, School of Psychology, Social Work and Social Policy, University of South Australia, Adelaide, South Australia; **Andrea Bari**, PhD, Picower Institute for Learning & Memory, Massachusetts Institute of Technology, Cambridge, Massachusetts, USA

Correspondence: Helen M. Stallman, Centre for Sleep Research, School of Psychology, Social Work and Social Policy, GPO Box 2471 Adelaide, South Australia, Email: helen.stallman@unisa.edu.au

First received 4 Dec 2016, final revision 8 Mar 2017, accepted 14 Mar 2017

Appendix 1

Summary of biopsychosocial risk factors for impulsive violence

Biological

- Genetics: male
- Brain structure
- Neurotransmitters
- <2% stage 4 sleep
- Age <50 years

Psychological

- Poor impulse control
- Poor verbal skills/poor education
- Substance use
- Psychiatric disorders
- Schizophrenia
- Antisocial personality disorder
- Borderline personality disorder

Social

- Parenting
- Family history of violence
- Availability of weapons
- Cultural norms
- Gender roles

Appendix 2

Biopsychosocial assessment of violent sleepwalkers

Presenting problem

- Presenting event, memory of event, time of night
- Substance use prior to the event
- Relationship history with the victim
- Psychosocial stressors
- Access to weapons

Medical history

- History of sleepwalking
- History of violence during sleepwalking
- Substance use history
- Presence of other sleep problems
- Presence of neurodevelopmental or neurological conditions
- Presence of psychiatric conditions

Developmental history

- Education history
- Employment history
- Social and cultural history including -quality of parenting, how conflict was demonstrated and resolved by each family member, abuse to self or others
- Language and communication skills

Forensic history

Testing

- Sleep deprivation polysomnography
- Impulse control questionnaire⁵⁰
- Executive functioning

References

- Stallman HM, Kohler M. Prevalence of sleepwalking: a systematic review and meta-analysis. *PLoS One* 2016; **11**: e0164769.
- Pololsky E. Somnambulistic homicide. *Med Sci Law* 1961; **1**: 260–5.
- Moldofsky H, Gilbert R, Lue FA, MacLean AW. Forensic sleep medicine: violence, sleep, nocturnal wandering: sleep-related violence. *Sleep* 1995; **18**: 731–9.
- Guilleminault C, Leger D, Philip P, Ohayon MM. Nocturnal wandering and violence: review of a sleep clinic population. *J Forensic Sci* 1998; **43**: 158–63.
- Pressman MR. Disorders of arousal from sleep and violent behavior: the role of physical contact and proximity. *Sleep* 2007; **30**: 1039–47.
- Reid Meloy J. Empirical basis and forensic application of affective and predatory violence. *Aust N Z J Psychiatry* 2006; **40**: 539–47.
- Stahl SM. Deconstructing violence as a medical syndrome: mapping psychotic, impulsive, and predatory subtypes to malfunctioning brain circuits. *CNS Spectrums* 2014; **19**: 357–65.
- Pai M. Sleep-walking and sleep activities. *Br J Psychiatry* 1946; **92**: 756–65.
- Jackson DD. An episode of sleepwalking. *J Am Psychoanal Assoc* 1954; **2**: 503–8.
- The Port Macquarie News and Hastings River Advocate. *Sleep-walking*. The Port Macquarie News and Hastings River Advocate, 1906 (<http://trove.nla.gov.au/ndp/del/article/119145483?searchTerm=sleep-walking&searchLimits=l-title=516>).
- The Tenterfield Intercolonial Courier and Fairfield and Wallangarra Advocate. *Sleep-walking Accidents*. The Tenterfield Intercolonial Courier and Fairfield and Wallangarra Advocate, 1903 (<http://trove.nla.gov.au/ndp/del/article/108691990?searchTerm=Sleep-walkingaccidents&searchLimits=l-title=453>).
- Barrier Miner. *Fatal Sleepwalking*. Barrier Miner, 1904.
- The Advertiser. Sleep-walking. The Advertiser, 1924 (<http://trove.nla.gov.au/ndp/del/article/36578592?searchTerm=Sleep-walking&searchLimits=l-state=South+Australia||l-title=34>).
- Ohayon MM. Violence and sleep. *Sleep Hypnosis* 2000; **2**: 1–7.
- Januszko P, Niemcewicz S, Gajda T, Wolynczyk-Gmaj D, Piotrowska AJ, Gmaj B, et al. Sleepwalking episodes are preceded by arousal-related activation in the cingulate motor area: EEG current density imaging. *Clin Neurophysiol* 2016; **127**: 530–6.
- Castelnuovo A, Riedner BA, Smith RF, Tononi G, Boly M, Benca RM. Scalp and source power topography in sleepwalking and sleep terrors: a high-density EEG study. *Sleep* 2016; **39**: 1815–25.
- Dang-Vu TT, Zadra A, Labelle MA, Petit D, Soucy JP, Montplaisir J. Sleep deprivation reveals altered brain perfusion patterns in somnambulism. *PLoS One* 2015; **10**: e0133474.
- Bassetti C, Vella S, Donati F, Wielepp P, Weder B. SPECT during sleepwalking. *Lancet* 2000; **356**: 484–5.
- Siever LJ. Neurobiology of aggression and violence. *Am J Psychiatry* 2008; **165**: 429–42.
- Brower MC, Price BH. Neuropsychiatry of frontal lobe dysfunction in violent and criminal behaviour: a critical review. *J Neurol Neurosurg Psychiatry* 2001; **71**: 720–6.
- Wager TD, Waugh CE, Lindquist M, Noll DC, Fredrickson BL, Taylor SF. Brain mediators of cardiovascular responses to social threat: part I: reciprocal dorsal and ventral sub-regions of the medial prefrontal cortex and heart-rate reactivity. *NeuroImage* 2009; **47**: 821–35.
- Ochsner KN, Ray RD, Cooper JC, Robertson ER, Chopra S, Gabrieli JD, et al. For better or for worse: neural systems supporting the cognitive down- and up-regulation of negative emotion. *NeuroImage* 2004; **23**: 483–99.
- Cunningham WA, Raye CL, Johnson MK. Implicit and explicit evaluation: fMRI correlates of valence, emotional intensity, and control in the processing of attitudes. *J Cogn Neurosci* 2004; **16**: 1717–29.
- Davidson RJ, Putnam KM, Larson CL. Dysfunction in the neural circuitry of emotion regulation – a possible prelude to violence. *Science* 2000; **289**: 591–4.
- Linnoila VM, Virkkunen M. Aggression, suicidality, and serotonin. *J Clin Psychiatry* 1992; **53** (suppl): 46–51.
- Coccaro EF. Neurotransmitter correlates of impulsive aggression in humans. *Ann N Y Acad Sci* 1996; **794**: 82–9.
- Abe K, Shimakawa M. Predisposition to sleep-walking. *Psychiatr Neurol* 1966; **152**: 306–12.
- Bakwin H. Sleep-walking in twins. *Lancet* 1970; **2**: 446–7.
- Meyer-Lindenberg A, Buckholtz JW, Kolachana B, Hariri AR, Pezawas L, Blasi G, et al. Neural mechanisms of genetic risk for impulsivity and violence in humans. *PNAS* 2006; **103**: 6269–74.
- Bortolato M, Pivac N, Muck Seler D, Nikolac Perkovic M, Pessia M, Di Giovanni G. The role of the serotonergic system at the interface of aggression and suicide. *Neuroscience* 2013; **236**: 160–85.
- Coccaro EF, Fanning JR, Phan KL, Lee R. Serotonin and impulsive aggression. *CNS Spectrums* 2015; **20**: 295–302.
- Higley JD, Linnoila M. Low central nervous system serotonergic activity is trait like and correlates with impulsive behavior. A nonhuman primate model investigating genetic and environmental influences on neurotransmission. *Ann N Y Acad Sci* 1997; **836**: 39–56.
- Linnoila M, Virkkunen M, Roy A. Biochemical aspects of aggression in man. *Clin Neuropharmacol* 1986; **9** (suppl 4): 377–9.
- Bari A, Theobald DE, Caprioli D, Mar AC, Aidoo-Micah A, Dalley JW, et al. Serotonin modulates sensitivity to reward and negative feedback in a probabilistic reversal learning task in rats. *Neuropsychopharmacology* 2010; **35**: 1290–301.
- Evers EA, Cools R, Clark L, van der Veen FM, Jolles J, Sahakian BJ, et al. Serotonergic modulation of prefrontal cortex during negative feedback in probabilistic reversal learning. *Neuropsychopharmacology* 2005; **30**: 1138–47.
- Bari A, Robbins TW. Inhibition and impulsivity: behavioral and neural basis of response control. *Progr Neurobiol* 2013; **108**: 44–79.
- Hess C, Reif A, Strobel A, Boreatti-Hummer A, Heine M, Lesch KP, et al. A functional dopamine-beta-hydroxylase gene promoter polymorphism is associated with impulsive personality styles, but not with affective disorders. *J Neural Transm (Vienna)* 2009; **116**: 121–30.
- Kulikova MA, Maluchenko NV, Timofeeva MA, Shlepzova VA, Schegolkova JV, Syssoeva OV, et al. Effect of functional catechol-O-methyltransferase Val158Met polymorphism on physical aggression. *Bull Exp Biol Med* 2008; **145**: 62–4.
- Labelle MA, Dang-Vu TT, Petit D, Desautels A, Montplaisir J, Zadra A. Sleep deprivation impairs inhibitory control during wakefulness in adult sleepwalkers. *J Sleep Res* 2015; **24**: 658–65.
- Bari A, Robbins TW, Dalley JW. Impulsivity. In *Animal Models of Drug Addiction*. *Neuromethods* (ed MC Olmstead): 379–401. Humana Press, 2011.
- van Marle HJF, Hermans EJ, Qin S, Fernández G. From specificity to sensitivity: how acute stress affects amygdala processing of biologically salient stimuli. *Biol Psychiatry* 2009; **66**: 649–55.
- Tikkanen R, Tiihonen J, Rautiainen MR, Paunio T, Bevilacqua L, Panarsky R, et al. Impulsive alcohol-related risk-behavior and emotional dysregulation among individuals with a serotonin 2B receptor stop codon. *Transl Psychiatry* 2015; **5**: e681.
- Mantere T, Tupala E, Hall H, Särkioja T, Räsänen P, Bergström K, et al. Serotonin transporter distribution and density in the cerebral cortex of alcoholic and nonalcoholic comparison subjects: a whole-hemisphere autoradiography study. *Am J Psychiatry* 2002; **159**: 599–606.
- Virkkunen M, Goldman D, Nielsen DA, Linnoila M. Low brain serotonin turnover rate (low CSF 5-HIAA) and impulsive violence. *J Psychiatry Neurosci* 1995; **20**: 271–5.
- Hoaken PN, Stewart SH. Drugs of abuse and the elicitation of human aggressive behavior. *Addict Behav* 2003; **28**: 1533–54.
- Barratt ES, Stanford MS, Kent TA, Alan F. Neuropsychological and cognitive psychophysiological substrates of impulsive aggression. *Biol Psychiatry* 1997; **41**: 1045–61.
- Byrd AL, Manuck SB. MAOA, childhood maltreatment and antisocial behavior: meta-analysis of a gene-environment interaction. *Biol Psychiatry* 2014; **75**: 1–19.
- Connolly EJ, Beaver KM. Assessing the salience of gene-environment interplay in the development of anger, family conflict, and physical violence: a biosocial test of general strain theory. *J Crim Justice* 2015; **43**: 487–97.
- Seager JA. Violent men: the importance of impulsivity and cognitive schema. *Crim Justice Behav* 2005; **32**: 26–49.

- 50 Bari A, Kellermann TS, Studer B. Impulsiveness and inhibitory mechanisms. In *Neuroimaging Personality, Social Cognition and Character* (eds JR Absher, J Cloutier): 113–39. Academic Press, 2016.
- 51 Stallman HM, Kohler M. A systematic review of treatments for sleepwalking: 100 years of case studies. *Sleep Hypnosis* 2016; doi: 10.5350/Sleep.Hypn.2016.18.0118. Available online at https://www.researchgate.net/publication/308002769_A_systematic_review_of_treatments_for_sleepwalking_100_years_of_case_studies.
- 52 National Collaborating Centre for Mental Health. *Antisocial Behavior and Conduct Disorders in Children and Young People: Recognition, Intervention and Management* (National Clinical Guideline Number 158). The British Psychological Society and The Royal College of Psychiatrists, 2013.
- 53 National Institute for Health and Care Excellence. *Antisocial Personality Disorder: Prevention and Management*. NICE, 2009.
- 54 Carrolla KM, Balla SA, Nicha C, Martinoa S, Frankfortera TL, Farentinosb C, et al. Motivational interviewing to improve treatment engagement and outcome in individuals seeking treatment for substance abuse: a multisite effectiveness study. *Drug Alcohol Depend* 2006; **81**: 301–12.
- 55 Cohen N, Margulies DS, Ashkenazi S, Schaefer A, Taubert M, Henik A, et al. Using executive control training to suppress amygdala reactivity to aversive information. *Neuroimage* 2016; **125**: 1022–31.
- 56 New AS, Buchsbaum MS, Hazlett EA, Goodman M, Koenigsberg HW, Lo J, et al. Fluoxetine increases relative metabolic rate in prefrontal cortex in impulsive aggression. *Psychopharmacology (Berl)* 2004; **176**: 451–8.
- 57 Hollander E, Tracy KA, Swann AC, Coccaro EF, McElroy SL, Wozniak P, et al. Divalproex in the treatment of impulsive aggression: efficacy in Cluster B personality disorders. *Neuropsychopharmacology* 2003; **28**: 1186–97.
- 58 Stallman HM, Kohler M, White J. Medication induced sleepwalking: a systematic review. *Sleep Med Rev* 2017. doi: 10.1016/j.smrv.2017.01.005 (Epub ahead of print).

