



Since January 2020 Elsevier has created a COVID-19 resource centre with free information in English and Mandarin on the novel coronavirus COVID-19. The COVID-19 resource centre is hosted on Elsevier Connect, the company's public news and information website.

Elsevier hereby grants permission to make all its COVID-19-related research that is available on the COVID-19 resource centre - including this research content - immediately available in PubMed Central and other publicly funded repositories, such as the WHO COVID database with rights for unrestricted research re-use and analyses in any form or by any means with acknowledgement of the original source. These permissions are granted for free by Elsevier for as long as the COVID-19 resource centre remains active.

The diagnosis of pneumonia in a pregnant woman with coronavirus disease 2019 using maternal lung ultrasound



Riccardo Inchingolo, MD, PhD; Andrea Smargiassi, MD, PhD; Francesca Moro, MD; Danilo Buonsenso, MD; Silvia Salvi, MD, PhD; Paola Del Giacomo, MD; Giancarlo Scoppettuolo, MD; Libertario Demi, PhD; Gino Soldati, MD; Antonia Carla Testa, MD

Coronavirus disease 2019 (COVID-19) is a global public health emergency.¹ Since the first diagnosis in Wuhan, China, the infection has spread rapidly to the rest of the country¹ and to more than 25 countries around the world, as reported in the World Health Organization European Region.² The typical symptoms are fever, cough, changes in sense of smell, headache, and diarrhea, and it can cause severe acute respiratory syndrome in some patients.¹

Lung ultrasound examination has been demonstrated to be an accurate imaging method to detect pulmonary and pleural conditions. During pregnancy, there is a need for rapid assessment of the maternal lung in patients with suspected coronavirus disease 2019. We report our experience on lung ultrasound examination in the diagnosis of coronavirus disease 2019 pneumonia in a pregnant woman. Typical ultrasound features of this pulmonary pathology, including diffuse hyperechoic vertical artifacts with thickened pleural line and “white lung” with patchy distribution, were observed. We suggest point-of-care lung ultrasound examination as a diagnostic imaging tool in pregnant women with suspected coronavirus disease 2019.

Key words: biomarkers, coronavirus, COVID-19, diagnosis, lung ultrasound, pleural effusion, pregnancy, respiratory failure, viral infection

From Pulmonary Medicine Unit, Dept. of Medical and Surgical Sciences, Fondazione Policlinico Universitario A. Gemelli IRCCS, Rome, Italy (Drs Inchingolo and Smargiassi); Dept. of Women’s, Children’s and Public Health Studies, Fondazione Policlinico Universitario A. Gemelli IRCCS, Rome, Italy (Drs Moro, Buonsenso, and Testa); Obstetrics and Obstetric Diseases Unit, Dept. of Women’s, Children’s and Public Health Studies, Fondazione Policlinico Universitario A. Gemelli IRCCS, Rome, Italy (Dr Salvi); Infectious Diseases Unit, Dept. of Laboratory and Infectious Disease monitoring Studies, Fondazione Policlinico Universitario A. Gemelli IRCCS, Roma, Italia (Drs Del Giacomo and Scoppettuolo); Ultrasound Laboratory Trento, Dept. of Information Engineering and Computer Science, University of Trento, Italia (Dr Demi); Diagnostic and Interventional Ultrasound Unit, Valle del Serchio General Hospital, Lucca, Italy (Dr Soldati); and Gynaecology and Obstetrics Institute, Università Cattolica del Sacro Cuore, Rome, Italy (Dr Testa).

Received March 24, 2020; revised April 2, 2020; accepted April 17, 2020.

The authors report no conflict of interest.

All authors contributed equally.

Corresponding author: Riccardo Inchingolo, MD, PhD. riccardo.inchingolo@policlinicogemelli.it

0002-9378/\$36.00

© 2020 Published by Elsevier Inc.

<https://doi.org/10.1016/j.ajog.2020.04.020>

Click [Video](#) under article title in Contents at [ajog.org](#)

Chest computed tomography (CT) is the imaging method of choice in the diagnosis of COVID-19. The hallmarks of COVID-19 on CT scan are bilateral, subpleural, ground-glass opacities with air bronchograms, ill-defined margins, and a slight predominance in the lower lobes and consolidative pulmonary opacities.^{3–5} Abnormal lung CT findings can be present even in asymptomatic patients, and lesions can rapidly evolve into a diffuse ground-glass opacity predominance or consolidation pattern within 1–3 weeks after onset of symptoms, peaking at around 2 weeks after onset.⁵ Chest x-ray (CXR) examination can reveal the disease only in advanced stages.^{5,6}

In pregnant women, the diagnosis of COVID-19 pneumonia is particularly challenging. Although chest CT is not contraindicated in pregnancy and remains the gold-standard technique for pulmonary pathologies,⁷ lung ultrasound (LUS) examination has been found to be an accurate imaging method to detect peripheral pulmonary and pleural conditions including pneumonia, with high accuracy (sensitivity >90% and specificity >95%),^{8–13} even in pregnancy.¹⁴

Typical ultrasound findings of COVID-19 pneumonia are (1) a patchy

distribution of interstitial artifactual signs (single and/or confluent vertical artifacts, small white lung regions), (2) an extended distribution of aforementioned interstitial artifactual signs to multiple areas of the lung surface, and (3) small subpleural consolidation with associated areas of white lung, following an agreed, tested, and standardized image acquisition protocol. The acquisition protocol includes 14 scanning areas (3 posterior, 2 lateral, and 2 anterior) along the paravertebral, midaxillary, and hemiclavear lines (NCT04322487).^{15,16}

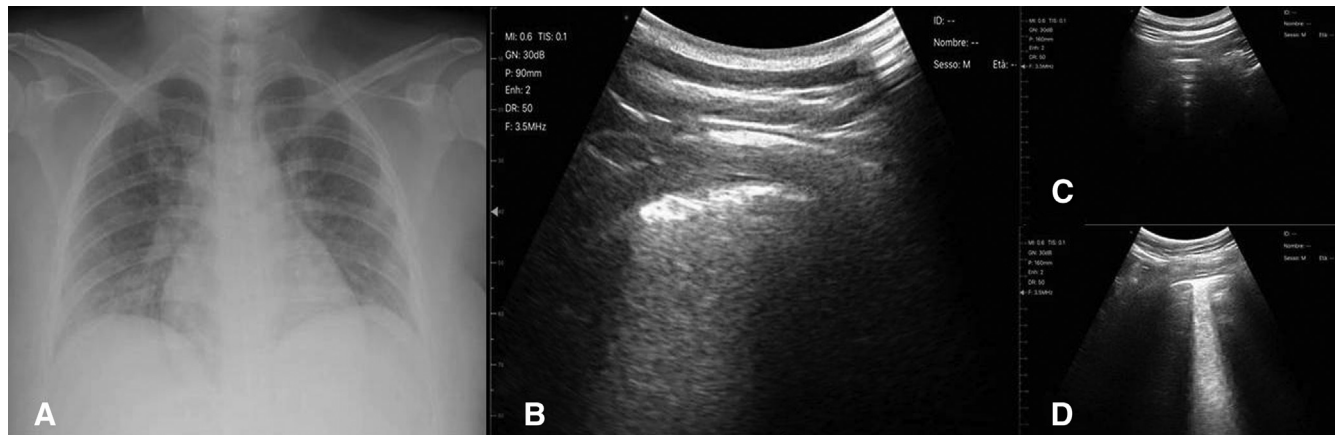
In our hospital, we studied the use of LUS to research findings of sonographic interstitial syndrome in a pregnant woman at 23 weeks’ gestation admitted for fever and cough on March 10, 2020, using a Wireless Ultrasound Probe Convex Color Doppler—C05C with a frequency of 3.5 MHz (ATL S.r.l., Milan, IT).

At admission, the pregnant woman was eupneic with spontaneous breathing in ambient air. Her peripheral oxygen saturation was 98%. On auscultation, vesicular sounds were reduced bibasally.

Ultrasonographic assessment was performed with the first operator scanning the patient with the probe and the second operator outside the room

FIGURE

Chest X-ray and chest ultrasound of a pregnant woman affected by COVID-19 pneumonia



A, Chest x-ray (posterior-anterior projection) of a pregnant woman at 23 week's gestation, affected by COVID-19 pneumonia showing no pathologic signs suggestive of pneumonia but only a specific bronchial thickening. **B**, Transversal ultrasonographic scan performed along the paravertebral line on basal posterior zone of the right hemithorax showing a pattern of "white lung." **C**, Transversal ultrasonographic scan performed along the paravertebral line on upper posterior zone of the right hemithorax showing a normal ultrasonographic pattern. **D**, Transversal ultrasonographic scan performed along the hemiclavear line on upper ventral zone of the right hemithorax showing a pattern of "white lung." Ultrasonographic scans were performed with Wireless Ultrasound Probe Convex Color Doppler—C05C with a frequency of 3.5 MHz (ATL S.r.l., Milan, IT).

Inchingolo. Diagnosis of pneumonia in a pregnant woman with COVID-19 using LUS. *Am J Obstet Gynecol* 2020.

evaluating images and videos—in real time—exploiting wireless technique to reduce operators' exposure to contamination (Video 1).

The obstetrical ultrasound examination revealed a normally grown fetus with normal amniotic fluid and Doppler parameters.

At LUS examination, the patient showed (1) diffuse hyperechoic vertical artifacts with thickened pleural line and (2) "white lung," with patchy distribution, on 3 of 14 predetermined scan sites (Figure, B and D) (Video 1). CXR, performed on the same day, was not suggestive of viral pneumonia (Figure, A). Throat swabs for the novel coronavirus (2019-nCoV) by real-time polymerase chain reaction confirmed the diagnosis of COVID-19 pneumonia.

Discussion

Point-of-care LUS examination could play a key role in the assessment of pregnant women with suspected 2019-nCoV infection. In particular, in this case, LUS findings were crucial to indicate antiviral treatment in the presence of substantially normal CXR.

It is worth underlining that we decided to perform CXR examination because of its different contribution in terms of imaging findings compared with LUS. In particular, CXR allows a panoramic view, giving information also regarding thoracic—not only pulmonary—zones not detectable at ultrasound examination. In contrast, LUS examination has a better sensitivity¹³ for pneumonia referring to focal alterations of peripheral airspace geometry of the lung. Moreover, CT scan was not performed because we did not need further information to plan management and start treatment.

From the current clinical evidence,^{17–19} LUS patterns of subjects with COVID-19 pneumonia include a patchy distribution of interstitial artifactual signs (single and/or confluent vertical artifacts, small white lung regions). Subsequently, these patterns extend to multiple areas of the lung surface. The further evolution is represented by the appearance, still patchy, of small subpleural consolidation with associated areas of white lung. The evolution in consolidations, especially in a gravitational position, with or without air bronchograms, and their increasing extension

along the lung surface indicate the evolution toward the phase of respiratory insufficiency.

Studies aimed at clarifying the diagnostic and prognostic role of LUS in COVID-19 are urgently needed, especially in pregnancy. The well-known advantages of LUS in terms of portability, bedside evaluation, safety, and possibility of repeating the examination during follow-up cannot be overlooked and should be exploited and implemented. Moreover, the possibility of performing LUS examination at bedside minimizes the need of transferring the patient, which poses a potential risk of further infection spreading to the healthcare personnel. ■

REFERENCES

- Huang C, Wang Y, Li X, et al. Clinical features of patients infected with 2019 novel coronavirus in Wuhan, China. *Lancet* 2020;395:497–506.
- World Health Organization Regional Office for Europe. Countries. Available at: <http://www.euro.who.int/en/countries>. Accessed June 12, 2020.
- Bernheim A, Mei X, Huang M, et al. Chest CT findings in coronavirus disease-19 (COVID-19): relationship to duration of infection. *Radiology* 2020 [Epub head of print].

4. Xu X, Yu C, Qu J, et al. Imaging and clinical features of patients with 2019 novel coronavirus SARS-CoV-2. *Eur J Nucl Med Mol Imaging* 2020;47:1275–80.
5. Shi H, Han X, Jiang N, et al. Radiological findings from 81 patients with COVID-19 pneumonia in Wuhan, China: a descriptive study. *Lancet Infect Dis* 2020;20:425–34.
6. Zhao W, Zhong Z, Xie X, Yu Q, Liu J. Relation between chest CT findings and clinical conditions of coronavirus disease (COVID-19) pneumonia: a multicenter study. *AJR Am J Roentgenol* 2020;214:1072–7.
7. Committee opinion no. 723 summary: guidelines for diagnostic imaging during pregnancy and lactation. *Obstet Gynecol* 2017;130:933–4.
8. Demi L, Demi M, Smargiassi A, Inchingolo R, Faita F, Soldati G. Ultrasonography in lung pathologies: new perspectives. *Multidiscip Respir Med* 2014;9:27.
9. Smargiassi A, Inchingolo R, Soldati G, et al. The role of chest ultrasonography in the management of respiratory diseases: document II. *Multidiscip Respir Med* 2013;8:55.
10. Zanforlin A, Giannuzzi R, Nardini S, et al. The role of chest ultrasonography in the management of respiratory diseases: document I. *Multidiscip Respir Med* 2013;8:54.
11. Soldati G, Demi M, Smargiassi A, Inchingolo R, Demi L. The role of ultrasound lung artifacts in the diagnosis of respiratory diseases. *Expert Rev Respir Med* 2019;13:163–72.
12. Ye X, Xiao H, Chen B, Zhang S. Accuracy of lung ultrasonography versus chest radiography for the diagnosis of adult community-acquired pneumonia: review of the literature and meta-analysis. *PLoS One* 2015;10:e0130066.
13. Reissig A, Copetti R, Mathis G, et al. Lung ultrasound in the diagnosis and follow-up of community-acquired pneumonia: a prospective, multicenter, diagnostic accuracy study. *Chest* 2012;142:965–72.
14. Inchingolo R, Smargiassi A, Mormile F, et al. Look at the lung: can chest ultrasonography be useful in pregnancy? *Multidiscip Respir Med* 2014;9:32.
15. Moro F, Buonsenso D, Moruzzi MC, et al. How to perform lung ultrasound in pregnant women with suspected COVID-19 infection. *Ultrasound Obstet Gynecol* 2020 [Epub ahead of print].
16. Soldati G, Smargiassi A, Inchingolo R, et al. Proposal for international standardization of the use of lung ultrasound for patients with COVID-19: a simple, quantitative, reproducible method. *J Ultrasound Med* 2020 [Epub ahead of print].
17. Peng QY, Wang XT, Zhang LN; Chinese Critical Care Ultrasound Study Group (CCUSG). Findings of lung ultrasonography of novel coronavirus pneumonia during the 2019–2020 epidemic. *Intensive Care Med* 2020 [Epub ahead of print].
18. Poggiali E, Dacrema A, Bastoni D, et al. Can lung US help critical care clinicians in the early diagnosis of novel coronavirus (COVID-19) pneumonia? *Radiology* 2020 [Epub ahead of print].
19. Huang Y, Wang S, Liu Y, et al. A preliminary study on the ultrasonic manifestations of peripulmonary lesions of non-critical novel coronavirus pneumonia (COVID-19) (February 26, 2020). Available at: <https://doi.org/10.2139/ssrn.3544750>. Accessed February 28, 2020.