

The Saudi Critical Care Society extracorporeal life support chapter guidance on utilization of veno-venous extracorporeal membrane oxygenation in adults with acute respiratory distress syndrome and special considerations in the era of coronavirus disease 2019

Hani N. Mufti, MD, FRCSC, Ahmed A. Rabie, MD, Alyaa M. Elhazmi, MD, Husam A. Bahauddeen, MD, FRCPC, Mostafa A. Rajab, MD, Ismael S. Al Enezi, CCP, Ayed Y. Assiri, MD, Khalid A. Maghrabi, MD, FACP, Ali A. Al Bshabshe, MD, FRCPC, Abdullah M. Abudayab, MD, SFCCM, Adel A. Tash, MD, Awad A. Al-Omari, MD, Mohamed H. Azzam, MD, FRCPC.

ABSTRACT

يوفر جهاز الأكسجة الغشائية خارج الجسم (الايكمو - ECMO) دعماً للدورة الدموية والتنفسية ويمكن اعتباره جسراً مؤقتاً لقيامه بوظيفة القلب والرئتين في حال وجود اعتطاب او التهاب شديد في وظائفهما والذي قد يضع حياة المريض في خطر شديد حيث انه يحافظ على الوظائف الحيوية ويمتدح بعض الوقت للقلب والرئتين للتشاف حتى تستعيد وظائفها الحيوية. لقد تم استخدام جهاز الايكمو (ECMO) منذ عام ٢٠٠٩ م بشكل كبير كجهاز لإنقاذ الحياة وداعم للمرضى الذين يعانون من متلازمة الضائقة التنفسية الشديدة عند البالغين (ARDS) بشكل رئيسي للمرضى الذين يعانون من التهابات فيروسية. في ديسمبر ٢٠١٩ م، ظهر على العديد من المرضى مجموعة من أعراض التهاب الرئوي الفيروسي في الصين. تم اكتشاف سلالة جديدة من عائلة فيروس كورونا، تسمى COVID-19 لتكون سبب هذا المرض الغامض، الذي سمي بالمتلازمة التنفسية الحادة الشديدة لفيروس كورونا ٢ (SARS-CoV-2). مع استمرار انتشار هذا الفيروس الجديد في جميع انحاء العالم، اطرت منظمة الصحة العالمية الى تصنيف هذا الفيروس كجائحة في أوائل العام ٢٠٢٠ م. تجاوز العدد الإجمالي للحالات ١٢٦ مليون حالة حول العالم في مارس ٢٠٢١ م. تم الإعلان عن اول حاله مؤكده في المملكة العربية السعودية في تاريخ ٢ مارس ٢٠٢٠ م وبنهاية شهر مارس ٢٠٢١ م كان العدد الإجمالي للحالات المؤكدة بـ COVID-19 ٣٦٠ ألف حالة تقريبا. تمسبا للحاجة لاستخدام جهاز الايكمو (ECMO) لعلاج المرضى الذين يعانون من SARS-CoV-2 وبناء على التجربة السابقة التي مرت بها المملكة خلال جائحة فيروس كورونا لمتلازمة الشرق الأوسط (MERS-CoV) في عام ٢٠١٢ م، قرر فرع دعم الحياة خارج الجسم (ECLS) من الجمعية السعودية لعناية الحرجة (SCCS) تشكيل فريق عمل مكون من عدة خبراء في استخدام جهاز الايكمو (ECMO). أوكلت لهذا الفريق صياغة إرشادات لاستخدام جهاز الايكمو (ECMO) كملاذ أخير للمرضى الذين يعانون من متلازمة الضائقة التنفسية الحادة للبالغين (ARDS)، خاصةً الذين يصابون بـ COVID-19 بناءً على أحدث الأدلة العلمية المتاحة. أراد فرع دعم الحياة خارج الجسم من الجمعية السعودية لعناية الحرجة (SCCS-ECLS) إنشاء مستند مبسط يمكن استخدامه للتوجيه، مع التركيز على السلامة، لتقديم خدمة الايكمو (ECMO) للمرضى الذين يعانون من متلازمة الضائقة التنفسية الحادة الشديدة لدى الكبار وتبسيط الضوء على وجه التحديد على كيفية التعامل مع المرضى المصابين بالمتلازمة التنفسية الحادة الشديدة لفيروس كورونا ٢ (SARS-CoV-2).

Extracorporeal membrane oxygenation (ECMO) is considered as a supportive treatment that provides circulatory and ventilatory support and can be thought off as a bridge to organ recovery. Since 2009, it has been applied as a rescue treatment for patients with severe adult respiratory distress syndrome (ARDS) mainly due to viral causes. In December 2019, several patients presented with a constellation of symptoms of viral pneumonia in China. A new strain of the corona virus family, called COVID-19, has been discovered to be the cause of this severe mysterious illness that was named severe acute respiratory syndrome coronavirus 2 (SARS-CoV-2). This new virus continued to spread across the globe leading to the World Health Organization announcing it as a pandemic in the early 2020. By the end of March 2021, the number of COVID-19 cases worldwide exceeded 126 million cases. In Saudi Arabia,

the first confirmed case of COVID-19 was reported in the 2nd March 2020. By the end of March 2021, the total number of confirmed COVID-19 cases in Saudi Arabia is just above 360,000. In anticipation of the need of ECMO for the treatment of patients with SARS-CoV-2 based on the previous Middle East respiratory syndrome coronavirus pandemic experience, the Saudi Extra-Corporeal Life Support (ECLS) chapter that is under the umbrella of the Saudi Critical Care Society (SCCS) convened a working group of ECMO experts. The mission of this group was to formulate a guidance for the use of ECMO as a last resort for patients with severe ARDS, especially with COVID-19 based on available evidence. The ECLS-SCCS chapter wanted to generate a document that can be used to simple guide, with a focus on safety, to provide ECMO service for patients with severe ARDS with a special focus on SARS-CoV-2.

Keywords: adult, respiratory failure, ARDS, ECMO, Covid-19

Saudi Med J 2021; Vol. 42 (6): 589-611
doi: 10.15537/smj.2021.42.6.20200520

From the Department of Cardiac Sciences (Mufti), from the Department of Intensive Care (Bahauddeen), King Faisal Cardiac Center, King Abdulaziz Medical City, Ministry of National Guard Health Affairs; from the College of Medicine (Mufti, Bahauddeen), King Saud bin Abdulaziz University for Health Sciences; from Department of Medical Research (Mufti, Bahauddeen), King Abdullah International Medical Research Center; from the Department of Cardiac Sciences (Tash) and from the Department of Intensive Care (Azzam), King Abdullah Medical Complex, Ministry of Health, Jeddah; from the College of Medicine (Bshabshe), King Khalid University, Abha; from the Critical Care Department (Rabie), King Saud Medical City; from the Department of Critical Care (Elhazmi, Al-Omari), from the Research Center (Elhazmi, Al-Omari), Dr. Sulaiman Al Habib Medical Group; from the Critical Care Department (Rajab, Enezi, Assiri), Prince Mohammad bin Abdulaziz Hospital; from the Intensive Care Department (Maghrabi), King Faisal Specialist Hospital and Research Center; from the Department of Intensive Care Services (Abudayab), Prince Sultan Military Medical City; and from the School of Medicine (Al-Omari), Alfaisal University, Riyadh, Kingdom of Saudi Arabia.

Received 26th February 2021. Accepted 9th April 2021.

Address correspondence and reprint request to: Dr. Hani Mufti, Division of Cardiac Surgery, Department of Cardiac Sciences, King Faisal Cardiac Center, King Abdulaziz Medical City, Ministry of National Guard Health Affairs, Jeddah, Kingdom of Saudi Arabia.
E-mail: muftihm@ngha.med.sa
ORCID ID: <https://orcid.org/0000-0002-0471-5738>

The Saudi Extracorporeal Life Support (ECLS) chapter, under the Saudi Critical Care Society (SCCS), was established in April 2018. The SCCS-ECLS is an umbrella body for extracorporeal membrane oxygenation (ECMO) experts and providers from different specialties, including but not limited to intensivists, cardiac surgeons, perfusionists, and nurses. The SCCS-ECLS provides high-fidelity simulation training and educational activities to assure competency among health care workers providing ECMO services in Saudi Arabia. This article is the result of a collaborative effort between ECMO experts across Saudi Arabia. The main goal is to discuss, propose, and advocate ECMO-related affairs and matters based on the best medical evidence available in the literature. We hope that this guidance document will help medical teams who are caring for patients with severe acute respiratory distress syndrome (ARDS) requiring ECMO. We will describe the most common issues the medical team might encounter while the patient is on veno-venous (VV) ECMO for acute respiratory distress syndrome.

I. Introduction.

Extracorporeal membrane oxygenation is a highly complex, labor-intensive standard of care since 1990 in pediatrics and 2009 in adults;³ it is a lung or heart rescue therapy when all conservative management fails to provide life support to the patient.⁴ The last decade has shown increasing demand for this kind of service worldwide, particularly during pandemics such as

influenza A (H1N1), Middle East Respiratory Syndrome Coronavirus (MERS-CoV), and currently, Coronavirus Disease 2019 (COVID-19).⁵⁻¹⁰ Extracorporeal membrane oxygenation is a form of medical life support that comes under the umbrella of extracorporeal life support (ECLS), which encompasses several entities used for the temporary support of patients with respiratory and/or cardiac failure.¹¹ Extracorporeal life support is more comprehensive nomenclature that includes the basic mode VV and veno-arterial (VA) ECMO, and the other modes of support that have evolved during last 2 decades, such as extracorporeal cardiopulmonary resuscitation (ECPR) and extracorporeal carbon dioxide removal (ECCO₂R) (Figure 1 shows the extracorporeal strategies that can be used for supporting patients with ARDS).

Extracorporeal life support is usually provided by multispecialty units, including cardiothoracic surgery, pediatric surgery, adult intensive care, anesthesiology, cardiology, pulmonary medicine, intensive care, pediatric intensive care, neonatology, and emergency medicine.^{12,13} The provision of ECMO varies between the countries that provide this service; it was introduced in Saudi Arabia during the H1N1 pandemic and was significantly utilized during the MERS-CoV outbreaks in 2014 by the Ministry of Health (MOH), with favorable outcomes.⁸

A. Important definitions. The Extracorporeal Life Support Organization (ELSO) is an international consortium of health care institutions dedicated to the development and evaluation of novel therapies for supporting failing organ systems.¹⁰ Extracorporeal Life Support Organization retains an international ECMO registry of affiliated centers. The registry data are mainly used for clinical research, and the development of guidelines. Educational programs are also provided.¹⁰

Extracorporeal life support is defined as the use of mechanical devices to temporarily (days to months) support heart or lung function in case of cardiac or pulmonary failure, with the goal of allowing time for heart or lung recovery or as a bridge to transplant.⁴ The ECMO is an external artificial circuit that drains venous blood from the patient, passing it through a membrane, where gas exchange takes place (oxygenation and removal of CO₂) outside the body, then the blood will be returned back to the venous system to provide respiratory support or to the arterial system to provide circulatory support⁴ (Figure 2 summarized the general demonstration of the standard components of an ECMO circuit).

Disclosure.

This document is mainly intended to be a general guide for the safe application of extracorporeal life support (ECLS) in critically ill patients with Acute Respiratory Distress Syndrome (ARDS) and was written by experts in the field.

A guidance document should not be considered by no means a standard of care. It will be revised at regular intervals as new evidence emerges.

The main goal of this guidance document is to serve as an educational tool to be used as a building block for physicians and other health professionals managing patients with the ARDS who will require extracorporeal membrane oxygenation.

This guidance document should not be a substitute of clinical judgment.

In no event will ECLS-SCCS be liable for any decision made or action taken in reliance upon the information provided through this guidance document.

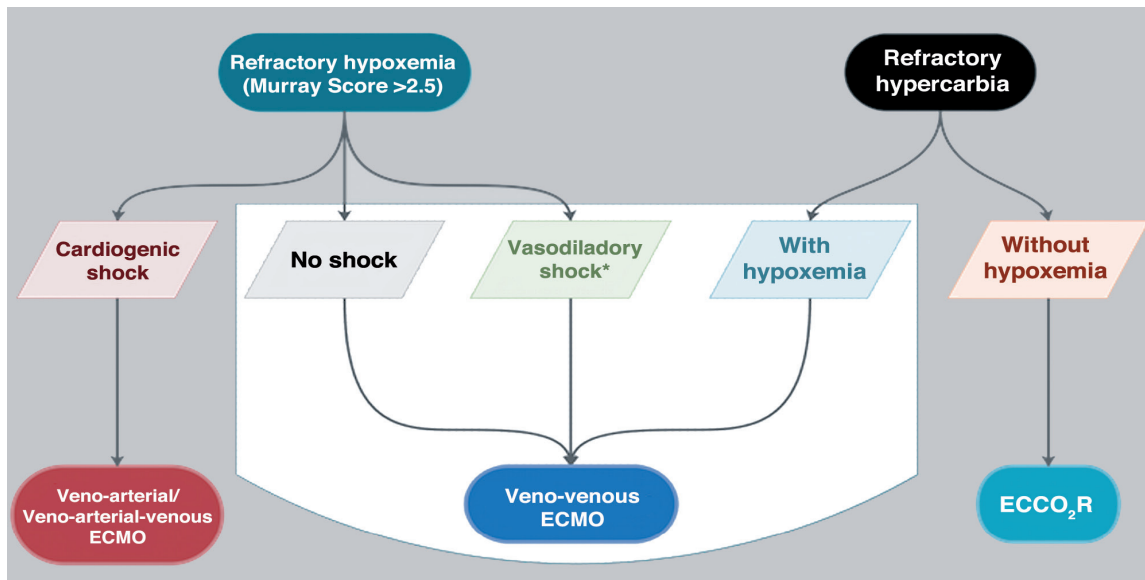


Figure 1 - The extracorporeal strategies that can be used for supporting patients with ARDS. ECMO: extracorporeal membrane oxygenation (ECMO). ECCO₂R: extracorporeal CO₂ removal

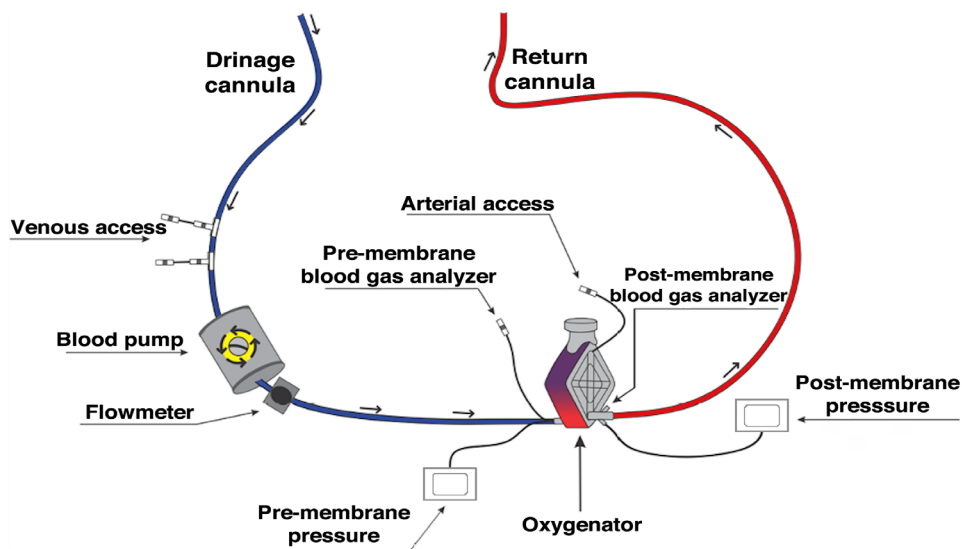


Figure 2 - General demonstration of the standard components of an extracorporeal membrane oxygenation (ECMO) circuit.

B. Types of ECMO. Extracorporeal membrane oxygenation types refers to the form of ECMO that describes a specific site from which a cannula draws blood (access) and returns blood from the ECMO machine to patient (return).

- **Veno-venous ECMO.** Provides respiratory support where blood is drawn from and returned to the venous system of the circulation after being oxygenated and decarboxylated.

- **Veno-arterial ECMO.** Provides circulatory support in which blood is drawn from the venous system and returned to the arterial system of the circulation after being oxygenated and decarboxylated. Veno-arterial ECMO types can also be divided according to the cannula insertion approach, that is, either the central or peripheral blood vessels.

- **Central ECMO.** The access and return cannulas are inserted directly in the great vessels of the heart or atrium through sternotomy incision.
- **Peripheral ECMO.** The access and return cannulas are inserted in medium-sized vessels in the groin or neck to access the great vessels of the heart or atrium through a percutaneous, semi-percutaneous, or cut-down approach.

II. Patient selection criteria

A. Veno-venous ECMO for adult patients with severe ARDS. The 2012 Berlin definition for ARDS is “a type of acute diffuse, inflammatory lung injury, leading to increased pulmonary vascular permeability, lung weight, and loss of aerated lung tissue. Patient typically present with hypoxia and bilateral infiltrates in chest images, accompanied a significant increase in lung resistance. At a microscopic level, there is diffuse alveolar edema and inflammation or even hemorrhage”.¹⁴

Even with maximal conventional therapies for ARDS, some patients continue to deteriorate. Extracorporeal membrane oxygenation is recognized as a supportive treatment that has been shown to improve survival in patients with severe ARDS after exhausting conventional therapies.¹⁴

To date, the best available evidence showing benefit in patient selection criteria for VV ECMO are the 2017 ELSO guidelines⁴ and the ECMO to rescue acute lung injury in severe ARDS criteria.² The Murray score¹⁵ and respiratory ECMO survival prediction score¹⁶ may be used for patients with severe refractory hypoxemic respiratory failure due to severe ARDS with other clinical considerations to aid patient selection for ECMO; however, it should not affect the final decision in consultation with the ECMO command center.

B. Selection Criteria for ECMO in Adult Patients with Severe ARDS (Table 1).

Table 1 - General indications for veno-venous (VV) ECMO.

<u>Indications for VV ECMO for respiratory failure:</u>
Consider referring a patient with severe acute respiratory distress syndrome (ARDS) after optimization of all other conventional modalities if the patient has:
<i>Severe hypoxic respiratory failure:</i>
PaO ₂ /FiO ₂ ratio <80 for 6 hours
PaO ₂ /FiO ₂ ratio <50 for 3 hours
<i>Severe hyper-carbic respiratory failure:</i>
pH <7.2 with pCO ₂ >60 mm Hg for >6 hours. ²

III. Important considerations for ECMO cannulation.

Early referral for ECMO according to patient selection criteria is important for appropriate timing for deploying ECMO. Cannulation can be performed in any location in the hospital according to the patient's current condition, hospital setting, and staffing. The most common location is bedside in the intensive care unit (ICU). However, some centers prefer performing the procedure under fluoroscopy guidance (such, in the vascular or cardiac catheterization laboratory, or the operating room). This should be carried out only if the patient condition allows safe mobilization and transfer to these areas. Careful layout of the procedure by the cannulating physician with team members is paramount considering the following:

A. Equipment availability. Cannula selection (type and size) based on:

- Mode (VV versus VA);
- ECMO configuration (femoral [FEM]–fem, fem–internal jugular [IJ]), double-lumen venous cannula in IJ);
- Pump flow target and patient weight and body surface area, and patient vascular anatomy and vessel size.

B. Consideration required before implementing ECMO. The treating team should obtain ECMO consent from the next of kin (Figure 2). Cross-matched blood products (at least 2 packed red blood cells) to be ready bedside. Correction of any coagulopathy by transfusion of platelets and fresh frozen plasma according to the patient's condition. Ultrasound (US) machine and cardiac echocardiogram probe must be available for ensuring safety. Medication for sedation and muscle relaxation. Heparin (50-100 U/kg), not to exceed 5000 U bolus (this dose includes the priming solution of circuit and machine if present). If the patient's central line is in the right IJ vein, it should be removed after securing a new central line in the counter left side or elsewhere away from the cannulation site (this should be carried out before cannulation to minimize the risk of bleeding or vascular injury while the patient is on therapeutic heparinization). Lastly, a checklist for ECMO insertion.

C. Staff and personnel. No consensus or evidence exists to mandate a specific structure. However, the team must fulfill the skills required to perform patient care safely and effectively. The optimum team number should include but is not limited to: i) cannulating physician, ii) intensivist/anesthetist, iii) ICU Nurse, perfusionist, iv) respiratory therapist, v) floater/

Table 2 - General indications for veno-venous (VV) extracorporeal membrane oxygenation (ECMO).

Contraindications for VV ECMO for respiratory failure:

The following are some of the contraindications for ECMO in patients with severe Acute Respiratory Distress Syndrome that should be considered before referral:

Absolute

- Circulatory collapse requiring cardiopulmonary resuscitation for >15 min (no extracorporeal cardiopulmonary resuscitation).
- Contradictions for anticoagulation (active bleeding or recent major surgery).
- Poor baseline functional status (Eastern Cooperative Oncology Group score 0-2).¹ (Appendix A)

Significant comorbidities associated with poor outcomes:

- Neurological (such as, stroke within the last 6 months, seizure disorder, dementia).
- Respiratory (such as, severe chronic obstructive pulmonary disease [COPD], pulmonary fibrosis, cystic fibrosis).
- Cardiac (such as, severe heart failure with left ventricular ejection fraction <30% from any cause, history of major cardiac intervention).
- Gastrointestinal (such as, severe short gut syndrome, Crohn's disease, ulcerative colitis).
- Hepatological (such as, liver cirrhosis with child-pugh B or C).
- Advanced solid organ malignancy (such as, advanced-stage colon cancer).

Severe peripheral vascular disease.

Severe liver failure with elevated International Normalized Ratio and derangement of liver enzymes.

Poor neurological status (due to intracranial bleeding, cerebrovascular accident, or others).

Relative

- Prolonged high setting mechanical ventilation (>7 days).
- Age >65 years.
- Left ventricular ejection Fraction <30% with no previous history of low ejection fraction.
- Renal (such as, end-stage renal disease on hemodialysis).
- Morbid obesity (body mass index > 35 kg/m²).
- Immunocompromised status (such as, post-renal transplant).
- Hematological malignancies within the last 5 years.

runner (such as, nurse). The following are important considerations for cannulation: a) full aseptic technique, b) for optimal patient safety and outcome, cannulation must be US-guided, unless the cut-down technique is used, as in a limited number of cases.¹⁷

D. Cannulation technique types.

i. Percutaneous. The most commonly used approach in adults with less incidence of infection and more patient safety;^{15,18} involves vessel puncture, guide wire placement, and serial dilation (Seldinger technique).¹⁹

ii. Semi-percutaneous. Used in some cases with difficult vessel identification by palpation or US such as extracorporeal cardiopulmonary resuscitation (ECPR), through a skin cut and gentle subcutaneous dissection to identify the vessels, followed by vessel puncture, guidewire placement, and serial dilation (Seldinger technique).¹⁸⁻²⁰

iii. Cut-down. Better avoided or restricted to cases after failure of the previous 2 techniques. It should be performed by a surgeon to identify the vessels and cut in the vessel wall, followed by direct cannula insertion.¹⁸⁻²⁰

E. Veno-venous ECMO configurations. Veno-venous ECMO requires deoxygenated venous blood to be removed from the patient by means of a pump, passing it through a membrane lung oxygenator where

gas exchange takes place, and then returning the oxygenated and decarboxylated blood to the venous system (Figure 3).

i. Femoral-IJ VV ECMO. This is the most common cannulation approach. However, we strongly discourage the use of the left IJ vein as a cannulation site. The 2 cannulas are inserted as follows: 1) A drainage (venous) cannula is inserted in the femoral vein. The tip should be in the inferior cavo-atrial junction or just below. 2) A return cannula (arterial) is inserted in the right IJ vein. The tip should be in the superior cavo-atrial junction.¹⁹

ii. Femoral-fem VV ECMO. This is the safest and easier approach. However, it has a higher incidence of recirculation. It can be used in the presence of a contraindication to right IJ vein insertion (such as, thrombosis, clot, or infection). In this technique, 25 cannulas are inserted in the following fashion: 1) A drainage cannula is inserted in the femoral vein. The tip should be in the inferior vena cava (IVC) below the hepatic veins. 2) A return cannula is inserted in contralateral femoral vein. The tip should be at the cavo-atrial junction or in the RA. 3) The tips of both cannulas should be at least 5-10 cm apart to avoid recirculation.

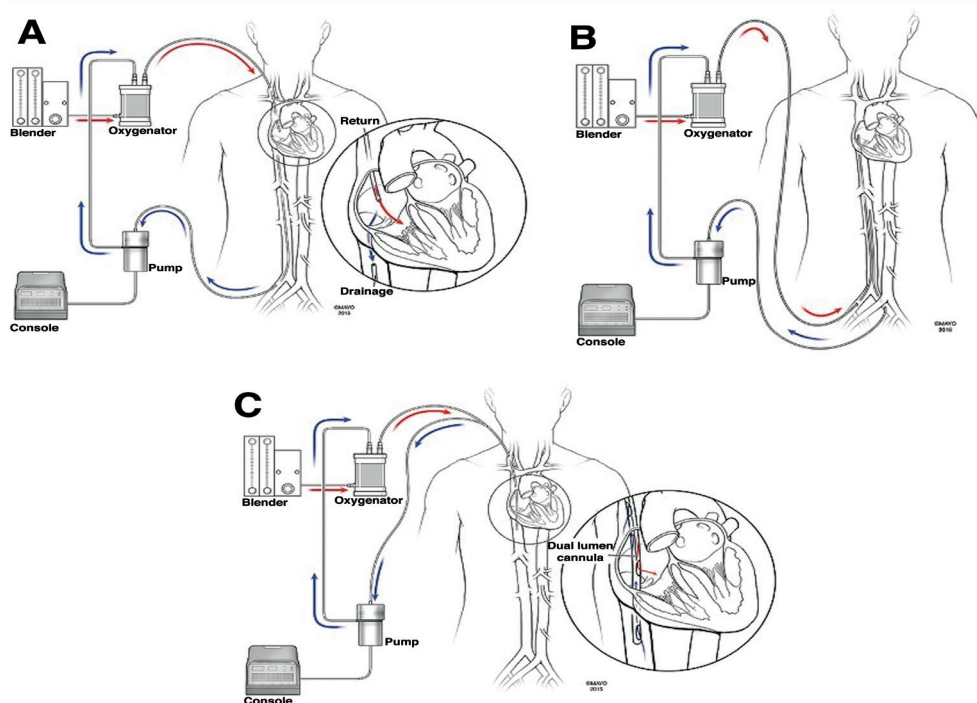


Figure 3 - Common venous (VV) extracorporeal membrane oxygenation (ECMO) configurations. A) Conventional VV ECMO, fem-IJ configuration. B) Fem-fem VV ECMO. C) Single cannula with dual ports, one for drainage and another for return that directs oxygenated blood toward the tricuspid valve.

iii. Double-lumen single venous cannulation. This cannula consists of a wire-enforced double-lumen single cannula with 2 ports: the drainage port drains deoxygenated blood from both IVC and superior vena cava (SVC) through 2 openings; the other port returns oxygenated blood through another separate opening (Figure 2).¹⁹ When using this cannula, it should be placed percutaneously under fluoroscopy guidance, trans-esophageal echocardiography (TEE), or trans-thoracic echocardiography (providing a good bicaval view can be safely obtained).

The proper position of the cannula should be confirmed before removing the drape using different modalities (improvement of patient saturation, TEE demonstrating appropriate flow through the return port in the direction of the tricuspid valve, tip of the drainage cannula in the IVC, chest x-ray [CXR]). This type of cannulation is discouraged for cases that require retrieval from other centers unless it is carried out by a well-trained cannulating ECMO team and only in special situations (such as, pregnant patients).²⁰

F. Determinants of appropriate flow for VV ECMO.

i) Determinants of gas exchange. Oxygenation (fraction of inspired oxygen [FiO_2]) is dependent on the

blood flow through the membrane and the ratio to the native cardiac output. Therefore, the VV ECMO blood flow rates required for supporting systemic oxygenation in adults are estimated to be 60-80 mL/kg/min. Carbon dioxide clearance through ECMO is determined by the rate of “sweep gas” flow, which relies on the properties of the membrane oxygenator.²¹

ii) Determinants of cannula selection. Generally, cannula size selection depends on the estimated required flow; a rough calculation for the cannula diameter could be used [$Fr = D \text{ (mm)} \times 3$], where Fr is the French gauge system and D is the diameter of the selected blood vessels to be cannulated.²¹ Utilizing the flow size chart provided by the manufacturer for each cannula also aids the best cannula selection.

iii) Initial ECMO blood flow settings. Patient body surface area and the patient’s general clinical condition (such as, high cardiac output status such as sepsis) plays an important role in the decision of optimal cannula size and target flows. Please note that this depends on the physiological target but can be used as general starting points. It should be adjusted based on physiological responses and parameters:

- ECMO for cardiac failure: start with 50-60 mL/kg/min. Take into consideration that there are several

factors that can affect the ECMO flow (such as, site used for vascular access, cannula length and size, and cardiac function).

- ECMO for respiratory failure: start with 60-80 mL/kg/min. The ECMO oxygenator is always more efficient in CO₂ extraction compared to O₂ delivery, which is noticeable in the blood gases. Several factors can affect the gas exchange during the ECMO run (such as, flow, membrane type, sweep, and patient condition).
- ECCO₂R (for hypercapnic respiratory failure): 25% of cardiac output.^{22,23}

IV. ECMO management.

A. General management. The attending ICU consultant is the primary intensivist. While the patient is on ECMO support, an ECMO consultant (intensivist or cardiac surgeon) should always be available as a resource. The ECMO consultant and perfusionist on-call contact information should be kept by the patient's bedside. The ECMO consultant role is to manage the ECMO parameters and help in optimizing the patient condition while on ECMO, working closely with the primary intensivist to come up with a daily plan aiming for weaning the patient off ECMO in a reasonable time when the patient recovers. The perfusionist role is to review the patient with the medical team each morning and again before leaving for the evening. The primary intensivist will review the patient daily and set the ECMO plan, involving colleagues experienced in ECMO as required.

B. Anticoagulation on ECMO. Heparin is the most common anticoagulant drug used for preventing clot formation inside the cannula, circuit, and membrane lung targeting an activated clotting time (ACT) goal or activated partial thrombin time (aPTT) adjustment. Systemic anticoagulation is usually used to prevent thrombotic complications (in the machine and the patient). However, this should be carefully monitored and adjusted to prevent bleeding complications, which are unfortunately are still high.^{24,25} If ACT is used, a range of 180-200 seconds (sec) has been suggested for VV-ECMO. However, different ACT platforms and their relationship to the measured heparin levels and aPTT are inconsistent, especially in the lower ACT target ranges for ECMO.²⁴ There are >300 laboratory methods for monitoring aPTT, with different results obtained depending on the method utilized. As a result of this wide variation, the PTT target (1.5 times the normal value) range used at one ECMO center should

not be translated to other centers without confirming the type of assay used for aPTT.²⁴ The evidence for low-dose heparin during an ECMO run is evolving; however, all expert opinion ensures its safety. A VV ECMO run can be maintained off heparin for days in individual cases, complicating moderate to severe bleeding providing adequate pump flow to avoid blood clotting; in this case, we advise a backup primed machine to be always available.²⁶ Bleeding and thrombotic complications during ECMO are common and have a significant impact on patient outcomes²⁵ (Table 3, Figure 4).

C. Venovenous ECMO circuit and membrane lung management. The cannula entry sites dressing should be checked daily by the ECMO team and changed every 48-72 hours. The ECMO team should check and document the cannula position and location daily, either by US or CXR. The perfusionist/ECMO specialist should check and document the circuit and membrane lung daily. Any change in pressures or evidence of clots should be immediately reported to the ECMO consultant. The console pressure alarm checklist should be checked daily; different circuit pressures should be continuously monitored and documented every 6 hours (h); any changes in console

Table 3 - Possible causes and management of bleeding on extracorporeal membrane oxygenation (ECMO).

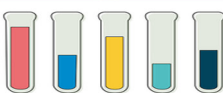
Cause	Cause	Solution
a) Low mean arterial pressure (MAP) with good ECMO flow and NO visible bleeding AND ACT is too high	Internal bleeding	Reduce anticoagulation Investigate source of bleeding
b) Low MAP with good ECMO flow and no visible bleeding AND ACT is within range	Double check hemoglobin reading Make sure that patient is not fluid-overloaded	Transfuse Fluid removal
c) Low MAP with good ECMO flow and visible bleeding	Bleeding from wounds or cannula sites	Transfuse Compress Call surgical team
d) Bleeding with low platelets	Destruction of platelets from ECMO Heparin-induced thrombocytopenia (HIT)	Transfuse platelets Check for HIT Change anticoagulant
e) Bleeding with normal platelets	Factor deficiency Unstable fibrin clot	Check coagulation Fibrinogen level TEG or ROTEM if available Treat cause

TEG: thromboelastography, ROTEM: rotational thromboelastometry, ACT: activated clotting time

Anticoagulation for Veno-Venous ECMO

Before Cannulation

Correct Important laboratory parameters



Important Targets

- Hemoglobin > 8 g/dl
- Platelets > $80 \times 10^9/L$
- INR < 3
- aPTT < 60 seconds
- Fibrinogen > 1 g/L

Invasive Lines

- Keep the Right Internal Jugular and Right Femoral Vein free for ECMO cannulas.
- If venous access in the above mentioned veins, please place new lines in different location.
- If time permits, insert arterial line.

Important Considerations

- Consent
- Sedation and muscle relaxants
- Ultrasound machine for access
- Assemble team
- ECMO is primed and ready
- Backup is available (Surgeon and Machine)


Important Blood Products

- Cross Match 2 Units of PRBCs
- Other Blood products as per blood work

During Cannulation

Unfractionated Heparin

Loading Dose: 50-100 units/kg IV bolus
(Maximum dose= 5000 units IV bolus)



Hemodynamics Management

Be ready to:

- Give volume (Blood or colloids)
- Vasopressors should be available and ready to use

After Cannulation

Immediately Post Cannulation

Baseline investigations with 30 min


- CBC (Hb & Plt)
- INR & aPTT
- ACT
- ABG
- Chest X-Ray

Goals to Achieve

Target ACT= 180-200 seconds
Target aPTT = 60-80 seconds

Heparin Infusion

- ACT within 30 min from cannulation
- Start infusion at 6-12 units/kg/hr
- Adjust based on ACT, aPTT and bleeding



First 24 hrs

Investigations

- ACT q 1-2 hrs
- aPTT q 4-6 hrs
- Fibrinogen q 24 hrs
- d-dimer q 24 hrs
- CXR q 24 hrs

First 24 hrs Targets Blood Work

ACT	aPTT	Hemoglobin	Platelets	Fibrinogen
180-200 seconds	50-70 seconds	> 8 g/dl	> $80 \times 10^9/L$	> 1 g/L

After 24 hrs & Daily

Investigations

- ACT q 2-4 hrs
- aPTT q 4-6 hrs
- Fibrinogen q 24 hrs
- d-dimer q 24 hrs
- CXR q 24 hrs

First 24 hrs Targets Blood Work

ACT	aPTT	Hemoglobin	Platelets	Fibrinogen
180-200 seconds	50-70 seconds	> 8 gm/dl	> $80 \times 10^9/L$	> 1 g/L

Please note: After 24 hrs and in some patients the ACT may become excessively prolonged and excessive anticoagulation may occur. On the other hand, aPTT is more stable. We recommend using both ACT and aPTT after 24hrs on heparin infusion for optimal management.

If patient is bleeding

Stat Investigations

- ACT
- aPTT
- Fibrinogen
- d-dimer
- CBC (Hb & Plt)

Patient is bleeding

ACT	aPTT	Hemoglobin	Platelets	Fibrinogen
Accept 160 seconds	Accept 40 seconds	↑ to 10 gm/dl	↑ to $100 \times 10^9/L$	↑ to 1.5 g/L

Figure 4 - Anticoagulation on veno-venous extracorporeal membrane oxygenation. INR: International Normalized Ratio, aPTT: activated partial thromboplastin time, ACT: activated clotting time, CBC: complete blood count

pressure should be forwarded to the ECMO consultant. The perfusionist/ECMO specialist should evaluate and examine membrane lung function daily, with pre- and post-membrane gas analysis. The circuit and ECMO machine should be adjusted, under a controlled environment, at the bedside, and protected against kinking or cannula dislodgment.

D. Respiratory management on VV ECMO. The challenge in respiratory management on ECMO is to provide balance between allowing good oxygenation with the excessive pump flow required, good volume status and the conservative fluid management required for recovery of wet lung.

1. Management of ventilator setting. Ventilator management after ECMO initiation should not be performed unless the appropriate targeted ECMO pump flow is achieved, and the patient's oxygen saturation has improved; ventilator settings should be adjusted to allow lung rest.³ Optimum ventilatory goals should be based on ultra-protective lung ventilation (Figure 5); however, the best evidence available shows that low tidal volume and driving pressure <15 mmHg are associated with good outcome. Thus, any ventilator setting that achieves these goals is accepted (Figure 5).

In patients on VV ECMO, reverse oxygen diffusion may occur if the oxygen tension in the pulmonary artery (due to ECMO and native blood flow) exceeds the alveolar PaO₂. As a rule of thumb, maintaining an FiO₂ of 0.3-0.6 while the patient is on VV ECMO should avoid this problem.

2. Management of hypoxia on ECMO. Permissive hypoxemia is accepted cases to maintain an arterial partial pressure of oxygen (PaO₂) of 50-55 mm Hg or 80-85% oxygen saturation, providing partial pressure of carbon dioxide (pCO₂) is normal, to avoid the late complications of cognitive dysfunction post-ECMO.

This could help avoid excessive pump flow and thus decrease hemolysis and other possible complications of high pump flow, and allow also better tolerance of conservative fluid management.²⁷ Management of hypoxia on ECMO should be treated cautiously and systematically to reach the definite cause and treat it accordingly.²⁸ The most common causes of hypoxia on ECMO are (Figure 6):

- A) Recirculation, a phenomenon exclusive to VV ECMO, in which reinfused oxygenated blood is withdrawn through the drainage cannula without passing through the systemic circulation.²⁹
- B) Drainage insufficiency.
- C) Other possible causes are listed in Table 4.

3. Blood gases management on ECMO

- i) Change in patient arterial pO₂
 - a. Increased arterial pO₂

Cause	Issue
Improved pulmonary function	Check tidal volumes (consider ECMO weaning protocol)
ECMO pump flow is too high	Decrease ECMO flow gradually down to 3 L/min, then decrease FiO ₂ after (consider ECMO weaning protocol)

- b. Decreased arterial pO₂ (refer to hypoxia algorithm, Figure 6);
- ii). Change in patient arterial pCO₂
 - a. Increased patient arterial pCO₂ (Table 5)
 - b. Decreased patient arterial pCO₂. If adequate oxygenation cannot be maintained (persistently low O₂ saturation) at a low or normal central venous pressure

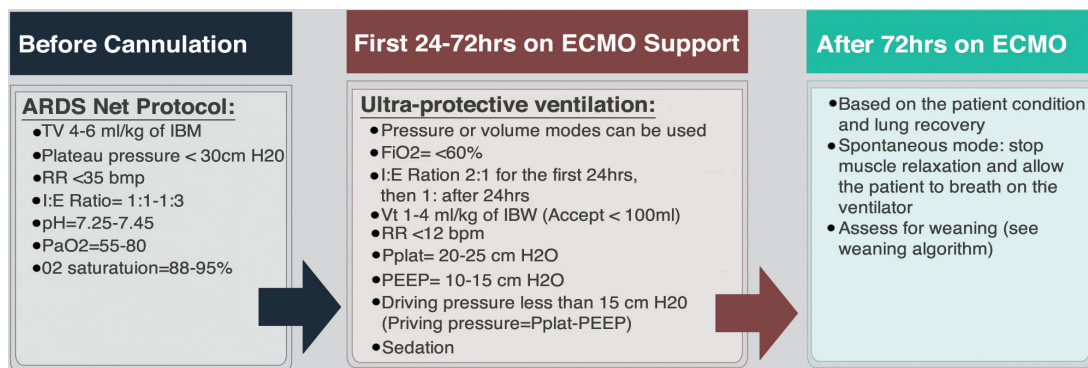


Figure 5 - Management of veno-venous ECMO and the ventilator PEEP: peek end expiratory pressure, Pplat: plateau pressure, ECMO: extracorporeal membrane oxygenation, ARDS: acute respiratory distress syndrome, FiO₂: oxygenation, IBM: ideal body mass, IBW: ideal body weight, H₂O: water, RR: respiratory rate, PaO₂: partial pressure of oxygen

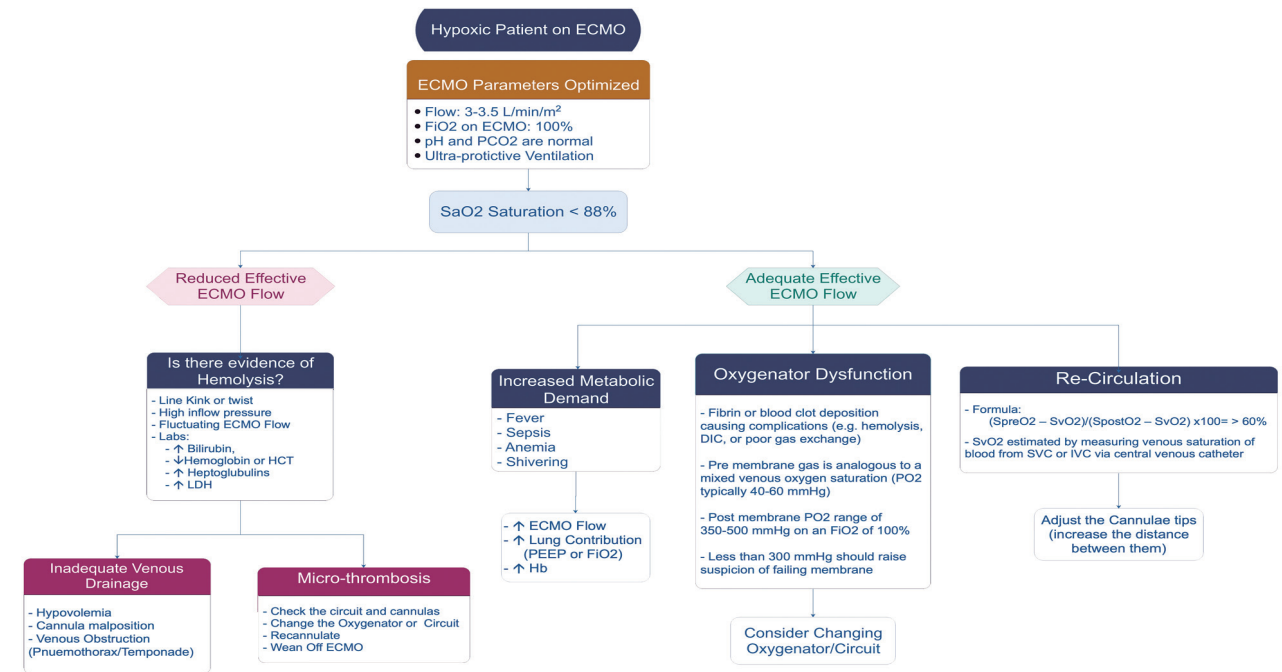


Figure 6 - Low O₂ saturation on ECMO. LDH: lactate dehydrogenase, ECMO: extracorporeal membrane oxygenation, PEEP: peek end expiratory pressure, IV: FiO₂: fraction of inspired oxygen, Hb: hemoglobin, PO₂: partial pressure of oxygen, DIC: disseminated intravascular coagulation, SVC: superior vena cava, IVC: intravenous

Table 4 - Possible causes and management of low O₂ saturation on extracorporeal membrane oxygenation (ECMO).

Cause	Solution	Note
↓ ECMO blood flow	↑ ECMO blood flow (↑RPMs)	Look for cause
↓ Hemoglobin	↑ Hemoglobin (transfusion)	Look for bleeding
Inadequate FiO ₂ or ventilator support	↑ FiO ₂ on ECMO ↑ Ventilator support	Look for cause
Too much flow through shunts or bridges (such as, contentious renal replacement therapy)	Check and reduce shunt flow	
Oxygenator failure	Check pre- and post-oxygenator blood gases	If yes → change
Pneumothorax	Chest x-ray	

Table 5 - Increasing patient arterial pCO₂ on extracorporeal membrane oxygenation (ECMO).

Category	Causes	Response
ECMO-related	i. Gas flow rate is too low ii. Oxygenator failure	i. ↑ Sweep gas flow ii. Check pre- and post-oxygenator blood gases
Patient-related	i. Pneumothorax ii. Hemothorax iii. Ventilator-associated pneumonia iv. PE	i. CXR ii. Pulmonary cultures iii. Bronchoscopy iv. CT PE
Ventilator-related	Inadequate ventilation	Adjust ventilator parameters

pCO₂: partial pressure of carbon dioxide, PE: pulmonary embolism, CXR: chest x-ray, CT: computed tomography

(CVP) (indicating good drainage and good cardiac function): a) a second return cannula can be inserted and connected to the post-oxygenator part of the circuit (using a Y connector) to optimize oxygen delivery. b) Upgrade the size of the return cannula. c) Check for recirculation, in which reinfused oxygenated blood is withdrawn through the drainage cannula without passing through the systemic circulation.²⁹ If that is the case, the cannula position needs to be adjusted accordingly. **Table 6** summarize the causes and how to respond to them.

Avoid aerosol-generating procedures such as bronchoscopy and tracheal suction without an in-line suction system in place unless necessary and clinically

Table 6 - The frequency distribution of the causes of burns in patients

Causes	Response
i. Gas flow rate is too high	i. ↓ Sweep gas flow
ii. Tachypneic	ii. Treat the underlying cause
iii. Over-ventilated	iii. Adjust ventilator settings

indicated. Bronchoscopy is an invasive aerosol-generating procedure. It should be avoided due to the risk of bleeding and of spreading COVID-19 particles. If bronchoscopy is necessary (such as, mucus plug, lobar pneumonia, worsening CXR, hemoptysis), then we recommend the following precautions: a) the procedure should be carried out in a negative pressure room. b) Appropriate full personal protective equipment (N95 or powered air-purifying respirator, face shield, gloves, and gown). c) Complete prevention of cough (muscle relaxation, increase sedation, and local lidocaine). d) If available, use a disposable bronchoscope. e) Bronchoscopy tray: Minimize material and cover with transparent sheets.

E. Hemodynamic management on VV ECMO. It is important to know that VV ECMO has no direct effect on preload or afterload, and cardiac output is entirely dependent on native cardiac function. The inotropic support requirement pre-ECMO is multifactorial; in most cases, post-ECMO inotropic requirement is reduced due to better organ perfusion and correction of blood gases. A strong relation can also be observed with reducing ventilator settings, which may be due to decreased pulmonary cytokine release. In case of sub-optimal flow, a fluid challenge can be administered. Although, fluid overload should be prevented. If an arterial saturation of 80-85% could not be achieved, the team should consider the insertion of a second access line to improve saturation > 88%.

F. Sedation. Deep sedation sufficient for inhibiting respiratory movement is required after initiation of ECMO up to the first 48 h to achieve stability. The use of infusions complemented by intermittent boluses as needed is highly recommended. Sedation management should be treated during the first 48 h, with early cessation of muscle relaxant if present, preferably not to exceed 48 h. The treating team plan for sedation should be discussed with the ECMO consultant during the entire ECMO run, with daily Richmond agitation sedation scale (RASS) goal or equivalent score and daily assessment of consciousness. Once the patient is stable on VV ECMO, less sedation should be used. This should not be on the expense of making the patient less comfortable. The medical team should aim

for the lowest sedation dose possible that will maintain satisfactory oxygen delivery yet at the same time does not compromise patient comfort. It may be possible to extubate the patient while on ECMO. However, this is not common practice, and evidence in outcome is limited to expert opinion and is still evolving. Early physiotherapy and mobilization are highly encouraged, which has been found to be safe with restricted protocols in expert centers.

I. Other medical management on VV ECMO

i. Investigations required for patients on ECMO

- Daily CXR and as indicated.
- Daily blood work: complete blood count (CBC), urea, creatinine, electrolytes; magnesium, PO₄; liver function tests (LFT) including lactate dehydrogenase (LDH), activated partial thromboplastin time (aPTT), international normalized ratio (INR), fibrinogen, D-dimer, and free plasma hemoglobin or haptoglobin if available.
- The ACT is usually used to titrate heparin in the first 24 h and is measured every 2 h over the first day.
- After the first 24 hours, aPTT should be performed in the hematology lab every 4-6 hours and used as a guide heparin therapy. Factor XI assay can be used to guide heparin therapy; however, the protocol is complex and not commonly used.
- Minimize performing blood collection unless it is necessary (such as, collecting blood cultures).

ii. Antibiotics

- Should be prescribed as indicated by physiological parameters or laboratory investigations or cultures.

iii. Feeding

- Patient should be fed as per the unit practice.
- When possible, a nasogastric tube (NGT) should be inserted.
- Prevention gastric stress ulcer: the use of intravenous (IV) proton pump inhibitor is usually recommended.

iv. Renal

- Pharmacological or mechanical diuresis can be used safely for patients on ECMO.
- Fluid status is very important on ECMO and can be very dynamic. The medical team should use the patient's parameters and ECMO flow as a guide.
- CRRT please write the meaning in full can be provided as per unit policy from a separate dialysis line or through the ECMO circuit.

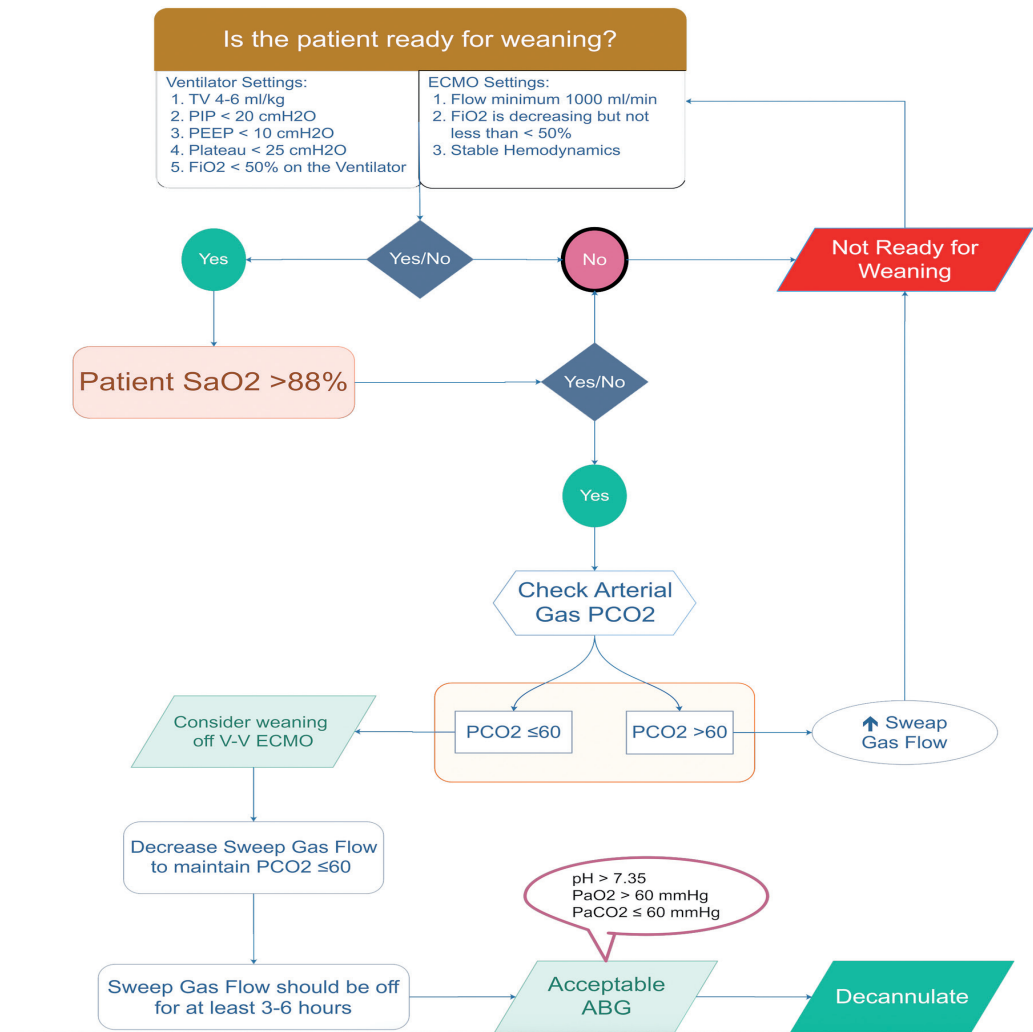


Figure 7 - Assessment of patient readiness for weaning off veno-venous ECMO PEEP: peek end expiratory pressure, Pplat: plateau pressure, ECMO: extracorporeal membrane oxygenation, ARDS: Acute Respiratory Distress Syndrome, FiO2: oxygenation, ABG: arterial blood gasses

- CRRT from the ECMO circuit requires the perfusionist to place the connection and has a higher risk of entraining air into the ECMO circuit.

v. General nursing care

- Logrolling of patient on ECMO (for back care or cleaning) can be carried out but should be minimized.
- Needs adequate staffing and experienced team are required for moving patients on ECMO.
- Extra caution should be practiced when moving patient on ECMO.
- Some expert centers have found that mobilizing the patient or even walking on ECMO is safe; it requires a well-trained ECMO physician

and perfusionist/ECMO specialist to manage possible troubleshooting.

G. Liberation from VV ECMO. This would require clinical assessment of readiness for weaning off ECMO (Figure 7). If the patient is considered ready to liberate from VV ECMO, then please refer to the “VV ECMO Liberation Process.”

- Venovenous ECMO liberation process (Figure 8). Extracorporeal membrane oxygenation discontinuation should pass through 4 defined stages: Stage I: Signs of improvement, stage II: ECMO weaning, Stage III: Trial off, and finally Stage IV: Decannulation.³⁰

1. Stage I: Signs of improvement. This stage starts after improvement of lung function and

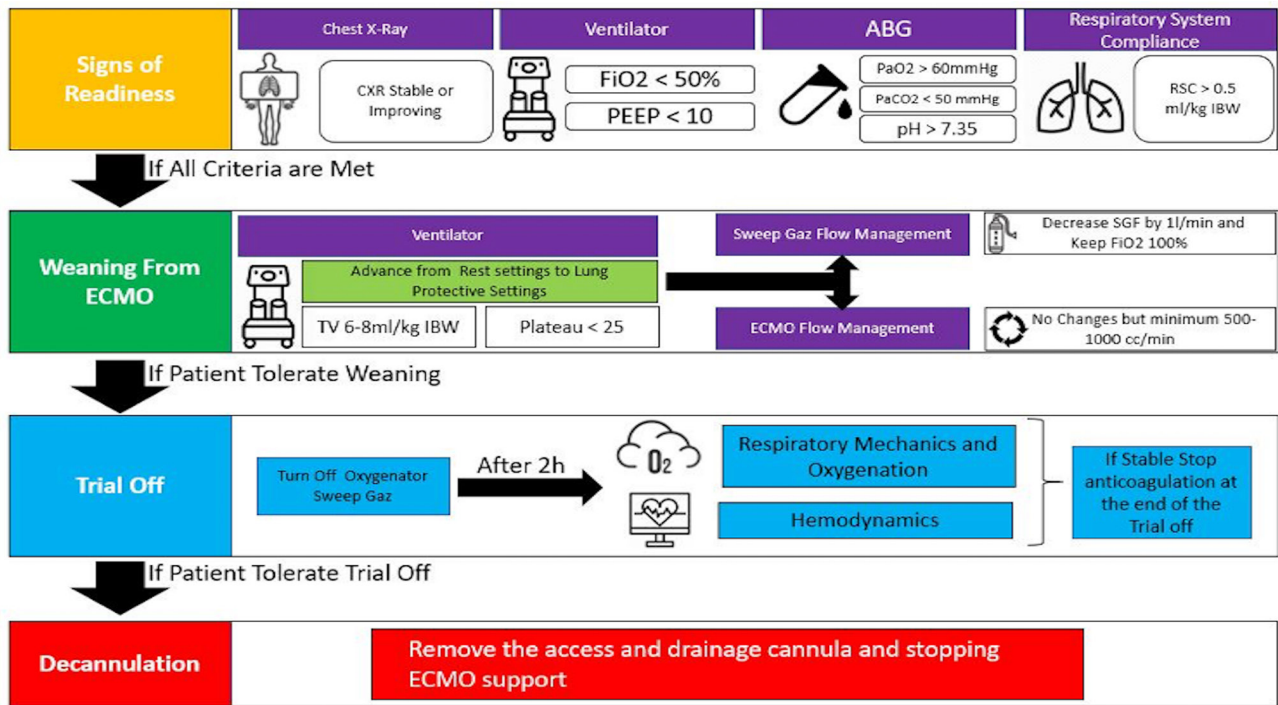


Figure 8 - Process of liberation from veno-venous ECMO. peek end expiratory, Pplat: plateau pressure, ECMO: extracorporeal membrane oxygenation, ARDS: Acute Respiratory Distress Syndrome, FiO₂: oxygenation, IBW: ideal body weight, RSC; respiratory system compliance, H: hours, ABG: arterial blood gasses, CXR: chest x-ray, PEEP: peek end expiratory pressure

reversal of the primary disease. This is usually assessed by: i) Improvement of CXR (not mandatory), ii) Improvement of lung compliance and gas exchange while on ECMO, evident by: a) Improvement of tidal volume (V_t) on fixed pressure control settings and b) Reduction of ECMO support in terms of sweep gas reduction and FiO₂ requirement.³⁰

2. Stage II: ECMO weaning. Stage II is defined as the process of gradually decreasing total ECMO support to remove mechanical heart/lung support from the patient. Weaning trials off ECMO should take place on moderate ventilator settings to allow escalation in case of deterioration after decannulation of ECMO. In stage II, advancement from lung rest to a lung protective strategy to provide safe mechanical ventilator settings on ECMO support is better to be defined as: i) FiO₂ <50%, ii) Positive end-expiratory pressure ≤10, iii) V_t 6-8 mL/kg for ideal body weight (IBW) to keep peak inspiratory pressure <30 and plateau <25, iv) RR (respiratory rate) <28 bpm to obtain mechanical ventilation ~100 mL/kg, v) Acceptable arterial blood gases (ABG) on decremental ECMO support: pH >7.3, PaO₂ >60 mm Hg, PaCO₂ ≤60 mmHg (providing pH >7.3). vi) Compliance is stable or improving preferably > 0.5 mL/kg IBW. Adjust sedation to allow spontaneous breathing.²⁹

If the above parameters are satisfied, the sweep gas flow is reduced in steps to 1-2 L/min sweep, while FiO₂ is maintained at 50%. The pCO₂ should be ≤60 mmHg with normal pH (7.35-7.45). Please note that for respiratory VV ECMO, the ECMO circuit blood flow does not need to be decreased or adjusted while attempting weaning from VV ECMO.

3. Stage III (Trial off). Defined as temporary cessation of ECMO support (sweep turned off: 0 L/min on VV ECMO) as a test for native lung recovery prior to decannulation. Turn off oxygenator sweep gas flow; maintain ECMO blood flow. Over 6 h, if gas exchange, respiratory mechanics, and hemodynamic parameters are acceptable, stop heparin infusion, then proceed for decannulation and discontinuing ECMO. In this stage, sweep gas flow is reduced in steps to 1-2 L/min; sweep FiO₂ is maintained at 100%. The pCO₂ should be ≤60 mmHg with normal pH (7.35-7.45). Extracorporeal membrane oxygenation circuit blood flow does not need to be adjusted or changed while attempting weaning from VV ECMO.³¹

4. Stage IV (Decannulation). Defined as removing the access and drainage cannulas and stopping ECMO support. Follow-up 24 h for possible bleeding from cannula sites. It is highly recommended to rule out any possible deep venous thrombosis (DVT)

48 hours post-decannulation. Some centers prefer to resume therapeutic anticoagulants after decannulation for 48 hours to avoid the development of DVT at the cannulation sites and to avoid pulmonary embolism (PE). Formal assessment of the status of the cannulated vessels (VV ECMO, veins; VA ECMO, vein and artery) using Doppler US should be carried out within 48-72 hours after decannulation. Decannulation is usually performed in the ICU at the bedside unless there is a need for vascular access repair or difficulty of removal that requires surgical intervention.³² In a special situation: Forced premature ECMO liberation on safe high ventilator settings may be required when the patient develops complications that require urgent ECMO discontinuation (such as, massive bleeding). This should be performed in consultation with the ECMO consultant, and a second opinion is always advised (such as, another ECMO consultant or the command center lead).

V. Troubleshooting.

Several common scenarios can be encountered during the patient run on ECMO. Some of them are related to the patient and some of them are related to the machine. The medical team must be prepared to deal with these issues ([Appendix A](#)).

VI. Extracorporeal membrane oxygenation during the COVID-19 pandemic and special considerations.

Since the start of the COVID-19 pandemic in Wuhan, China, in early 2020, the SCCS has been actively monitoring and evaluating the situation across the globe since the World Health Organization (WHO) announced the emergence of the novel coronavirus.^{33,34} On March 2, 2020, the MOH announced the first confirmed case of COVID-19 in Saudi Arabia.³⁵ Since then, the SCCS has been actively involved in developing several scientific statements and customized guidelines by local experts based on up-to-date information to aid health care practitioners.³⁶

Early in the pandemic, Ramanathan et al³⁷ encouraged that health care systems should make appropriate plans in the anticipation of the need for ECMO in patients with COVID-19 SARS-CoV. As ELSO is the scientific body and world leading group in managing patients with ECMO, they have released a consensus with the title "A Consensus Document from an International Group of Interdisciplinary Extracorporeal Membrane Oxygenation Providers" that

have been published the American Society for Artificial Internal Organs (ASAIO) journal.³⁸ The main message is that the delivery of ECMO should be based on the healthcare system ability to maintain this finite and resource intensive modality without compromising other resources. The consensus paper working group have strongly discouraged the initiation of a new ECMO center during the COVID-19 pandemic for the treatment of patients with SARS-CoV. In a study by Barbaro et al,³⁹ 1035 patients from 213 hospitals across the globe who received ECMO for COVID-19 ARDS. Ninety days mortality for this cohort was approximately 37%. A study conducted in Paris-Sorbonne University Hospital Network, France in a health network with an expert ECMO group had similar results.⁴⁰

On April 9, 2020, the Saudi ECLS chapter, which is under the SCCS, released a statement paper for managing patients with ARDS due to COVID-19 ([Appendix, Figure A6](#)). This statement was quite conservative because, at that time, there was insufficient scientific evidence on the support of patients with ARDS secondary to COVID-19, yet the chapter members felt that some groups of patients might benefit from ECMO, and at the same time it would allow evaluation of the available but limited ECMO resources in the country (including: the number of centers, machines, supply, cannulas, and trained medical personal). With better understanding of the pathophysiology of ARDS in patients with COVID-19, especially patients who would require ECMO, the Saudi ECLS chapter released a second version of the statement with more liberal patient selection criteria ([Appendix, Figure A7](#)).

An ECMO hotline has been created under the umbrella of the MOH command and control center. The main objective of the ECMO hotline is to connect critical care providers to local ECMO experts and to facilitate the management of patients who could benefit from ECMO support. To date, more than 180 patients have been supported with several forms of ECMO (with >95% supported with VV ECMO) (Source: MOH ECMO Supervisor, Dr. M H Azzam).

Acknowledgment. *The authors would like to thank Cambridge Proofreading Worldwide LLC (<https://proofreading.org>) for English language editing.*

References

1. Oken MM, Creech RH, Tormey DC, Horton J, Davis TE, McFadden ET, et al. Toxicity and response criteria of the Eastern Cooperative Oncology Group. *Am J Clin Oncol* 1982; 5: 649-655.

2. Combes A, Hajage D, Capellier G, Demoule A, Lavoué S, Guervilly C, et al. Extracorporeal membrane oxygenation for severe acute respiratory distress syndrome. *N Engl J Med* 2018; 378: 1965-1975.
3. Peek GJ, Clemens F, Elbourne D, Firmin R, Hardy P, Hibbert C, et al. CESAR: conventional ventilatory support vs extracorporeal membrane oxygenation for severe adult respiratory failure. *BMC Health Serv Res* 2006; 6: 163.
4. Extracorporeal Life Support Organization. ELSO Guidelines For Adult Respiratory Failure V 1.4: ELSO; 2017. [Updated 2017. 2021 January 12]. Available from: https://www.else.org/Portals/0/ELSO%20Guidelines%20For%20Adult%20Respiratory%20Failure%201_4.pdf
5. White DB, Angus DC. Preparing for the sickest patients with 2009 influenza A (H1N1). *JAMA* 2009; 302: 1905-1906.
6. Australia T, Investigators* NZEMOI. Extracorporeal membrane oxygenation for 2009 influenza A(H1N1) acute respiratory distress syndrome. *JAMA* 2009; 302: 1888-1895.
7. Pham T, Combes A, Roze H, Chevret S, Mercat A, Roch A, et al. Extracorporeal membrane oxygenation for pandemic influenza A(H1N1)-induced acute respiratory distress syndrome: a cohort study and propensity-matched analysis. *Am J Respir Crit Care Med* 2013; 187: 276-285.
8. Alshahrani MS, Sindi A, Alshamsi F, Al-Omari A, El Tahan M, Alahmadi B, et al. Extracorporeal membrane oxygenation for severe Middle East respiratory syndrome coronavirus. *Ann Intensive Care* 2018; 8: 3.
9. Extracorporeal Life Support Organization. ECMO in COVID-19. [Updated 2020. 2021 January 28]. Available from: <https://www.else.org/Registry/FullCOVID19RegistryDashboard.aspx>
10. Extracorporeal Life Support Organization. ELSO (Extracorporeal Life Support Organization) Overview 2020. [Updated 2021. 2021 January 28] Available from: <https://www.else.org/AboutUs/Overview.aspx>
11. Conrad SA, Broman LM, Taccone FS, Lorusso R, Malferteiner MV, Pappalardo F, et al. The Extracorporeal Life Support Organization Maastricht Treaty for nomenclature in extracorporeal life support. A position paper of the Extracorporeal Life Support Organization. *Am J Respir Crit Care Med* 2018; 198: 447-451.
12. Extracorporeal Life Support Organization. ELSO Guidance Document: ECMO for COVID-19 Patients with Severe Cardiopulmonary Failure. [Updated 2020. 2021 January 28]. [Available from: <https://www.else.org/Portals/0/Files/pdf/ECMO%20for%20COVID%2019%20Guidance%20Document.Final%2003.24.2020.pdf>
13. Ali J, Vuylsteke A. Extracorporeal membrane oxygenation: indications, technique and contemporary outcomes. *Heart* 2019; 105: 1437-1443.
14. ARDS Definition Task Force, Ranieri VM, Rubenfeld GD, Thompson TB, Ferguson ND, Caldwell E, et al. Acute respiratory distress syndrome: The Berlin definition. *JAMA* 2012; 307: 2526-2533.
15. Raghavendran K, Napolitano LM. Definition of ALI/ARDS. *Crit Care Clin* 2011; 27: 429-437.
16. Schmidt M, Bailey M, Sheldrake J, Hodgson C, Aubron C, Rycus PT, et al. Predicting survival after extracorporeal membrane oxygenation for severe acute respiratory failure. The Respiratory Extracorporeal Membrane Oxygenation Survival Prediction (RESP) score. *Am J Respir Crit Care Med* 2014; 189: 1374-1382.
17. Danial P, Hajage D, Nguyen LS, Mastroianni C, Demondion P, Schmidt M, et al. Percutaneous versus surgical femoro-femoral veno-arterial ECMO: a propensity score matched study. *Intensive Care Med* 2018; 44: 2153-2161.
18. Ganslmeier P, Philipp A, Rupprecht L, Diez C, Arlt M, Mueller T, et al. Percutaneous cannulation for extracorporeal life support. *Thorac Cardiovasc Surg* 2011; 59: 103-107.
19. Jayaraman AL, Cormican D, Shah P, Ramakrishna H. Cannulation strategies in adult veno-arterial and veno-venous extracorporeal membrane oxygenation: Techniques, limitations, and special considerations. *Ann Card Anaest* 2017; 20: S11-S8.
20. Sorokin V, MacLaren G, Vidanapathirana PC, Delnoij T, Lorusso R. Choosing the appropriate configuration and cannulation strategies for extracorporeal membrane oxygenation: the potential dynamic process of organ support and importance of hybrid modes. *Eur J Heart Fail* 2017; 19: 75-83.
21. Schmidt M, Tachon G, Devilliers C, Muller G, Hekimian G, Brechot N, et al. Blood oxygenation and decarboxylation determinants during venovenous ECMO for respiratory failure in adults. *Intensive Care Med* 2013; 39: 838-846.
22. Pavlushkov E, Berman M, Valchanov K. Cannulation techniques for extracorporeal life support. *Ann Transl Med* 2017; 5: 70.
23. Napp LC, Kuhn C, Hoepfer MM, Vogel-Claussen J, Haverich A, Schafer A, et al. Cannulation strategies for percutaneous extracorporeal membrane oxygenation in adults. *Clin Res Cardiol* 2016; 105: 283-296.
24. Chlebowski MM, Baltagi S, Carlson M, Levy JH, Spinella PC. Clinical controversies in anticoagulation monitoring and antithrombin supplementation for ECMO. *Crit Care* 2020; 24: 19.
25. Barbaro RP, Paden ML, Guner YS, Raman L, Ryerson LM, Alexander P, et al. Pediatric extracorporeal life support organization registry international report 2016. *ASAIO J* 2017; 63: 456-463.
26. Aubron C, McQuilten Z, Bailey M, Board J, Buhr H, Cartwright B, et al. Low-dose versus therapeutic anticoagulation in patients on extracorporeal membrane oxygenation: a pilot randomized trial. *Crit Care Med* 2019; 47: e563-e571.
27. Patel B, Arcaro M, Chatterjee S. Bedside troubleshooting during venovenous extracorporeal membrane oxygenation (ECMO). *J Thorac Dis* 2019; 11: S1698-s1707.
28. Sidebotham D. Troubleshooting adult ECMO. *J Extra Corpor Technol* 2011; 43: P27-32.
29. Pappalardo F, Pieri M, Corada AB, Ajello S, Melisurgo G, De Bonis M, et al. Timing and Strategy for weaning from venoarterial ECMO are complex issues. *J Cardiothorac Vasc Anesth* 2015; 29: 906-911.
30. Aissaoui N, El-Banayasy A, Combes A. How to wean a patient from veno-arterial extracorporeal membrane oxygenation. *Intensive Care Med* 2015; 41: 902-905.
31. Grant AA, Hart VJ, Lineen EB, Badiye A, Byers PM, Patel A, et al. A Weaning protocol for venovenous extracorporeal membrane oxygenation with a review of the literature. *Artif Organs*. 2018; 42: 605-610.
32. Brogan TV. Manual of extracorporeal membrane oxygenation (CMO) in the ICU. *Crit Care Med* 2014; 42: e548.
33. Elsevier. Novel Coronavirus Information Center. [Updated 2021 April 2. 2021 January 11]. Available from: <https://www.elsevier.com/connect/coronavirus-information-center>

34. World Health Organization. WHO Timeline - COVID-19 [Updated 2020. 2021 January 28]. Available from: <https://www.who.int/news-room/detail/27-04-2020-who-timeline---covid-19>
35. Ministry of Health. MOH Reports First Case of Coronavirus Infection. [Updated 2020. 2021 January 28]. Available from: <https://www.moh.gov.sa/en/Ministry/MediaCenter/News/Pages/News-2020-03-02-002.aspx>
36. Alhazzani W, Al-Suwaidan F, Al Aseri Z, Al Mutair A, Alghamdi G, Rabaan A, et al. The Saudi critical care society clinical practice guidelines on the management of COVID-19 patients in the intensive care unit. *Saudi Crit Care J* 2020; 4: 27-44.
37. Ramanathan K, Antognini D, Combes A, Paden M, Zakhary B, Ogino M, et al. Planning and provision of ECMO services for severe ARDS during the COVID-19 pandemic and other outbreaks of emerging infectious diseases. *Lancet Respir Med* 2020; 8: 518-526.
38. Shekar K, Badulak J, Peek G, Boeken U, Dalton HJ, Arora L, et al. Extracorporeal Life Support Organization Coronavirus disease 2019 interim guidelines: a consensus document from an international group of interdisciplinary extracorporeal membrane oxygenation providers. *ASAIO J* 2020; 66: 707-721.
39. Barbaro RP, MacLaren G, Boonstra PS, Iwashyna TJ, Slutsky AS, Fan E, et al. Extracorporeal membrane oxygenation support in COVID-19: an international cohort study of the Extracorporeal Life Support Organization registry. *Lancet* 2020; 396: 1071-1078.
40. Schmidt M, Hajage D, Lebreton G, Monsel A, Voiriot G, Levy D, et al. Extracorporeal membrane oxygenation for severe acute respiratory distress syndrome associated with COVID-19: a retrospective cohort study. *Lancet Respir Med* 2020; 8: 1121-1131.

Appendix A - Supplementary materials on management and troubleshooting of patients on VV ECMO.

A. Eastern Cooperative Oncology Group Performance Status

The Eastern Cooperative Oncology Group (ECOG) general performance scale was developed to assess how a patient’s disease (mainly cancer) is progressing, and the impact of the disease on the ability to perform normal activities of daily living. It is usually used to determine appropriate treatment and aid rough estimation of a prognosis.

Eastern Cooperative Oncology Group (ECOG) performance status	
Grade	ECOG
0	Fully active, able to carry out all pre-disease performance without restriction
1	Physically strenuous activity is restricted, but is ambulatory and able to carry out work of a light or sedentary nature, e.g., light housework, office work
2	Ambulatory and capable of all selfcare but unable to carry out any work activities. Up and about for >50% of waking hours
3	Capable of only limited selfcare, confined to bed or chair for >50% of waking hours
4	Completely disabled. Cannot carry out any selfcare. Totally confined to bed or chair
5	Dead

B. Troubleshooting

i. Pump flow management on ECMO

1) Variable ECMO flow (Chattering or kicking) (Figure A1). A common phenomenon that occurs when excessive negative pressure by the pump causes the vessel wall to collapse over the cannula tip. This leads to interrupted pump flow that may stop the flow in some cases. This condition should be treated immediately to avoid severe hemolysis with unfavorable sequelae.

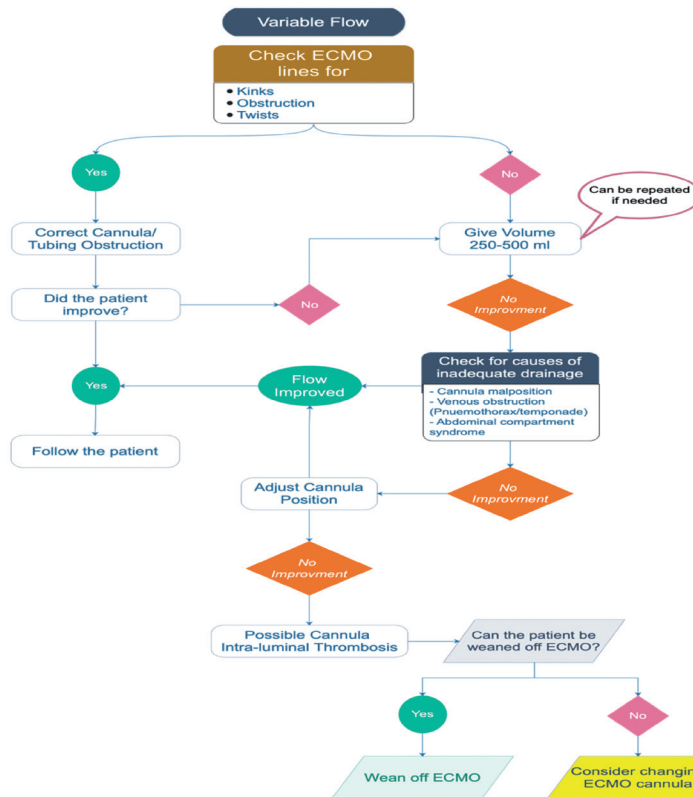


Figure A1 - Variable flow on veno-venous extracorporeal membrane oxygenation (ECMO).

2) Venous insufficiency

- Low flow, venous negative pressure alarm, or fluctuation of pump flow are possible signs of venous insufficiency. Patient SpO2 may decrease (Table A1).

Table A1 - Venous insufficiency.

Cause	Action	Response
Change in venous cannula position	Reduce pump speed (rpm) temporarily and optimize ventilator settings	This will improve venous drainage until the cause is addressed and there is definitive management
Hypovolemia	If patient is hypovolemic due to high urine output: Aggressive diuresis, bleeding, etc.	Volume assessment Give volume/transfuse
Other causes of increased intrathoracic or abdominal pressure (pneumothorax, cardiac tamponade, intrabdominal bleeding, and so on)	Change the patient position and/or venous cannula position	Tip migration Check by x-ray
Venous line obstruction by clot or kink or twist	Check tubing and pump head for fibrin or clot Consider FAST (focused assessment with sonography for trauma) exam and manage accordingly	Consider changing the cannula or circuit May require surgical intervention

ii. Pump failure (Figure A2)

If the pump suddenly stops, the medical team should call for help. Then start by clamping the ECMO lines and transfer the circuit to the replacement emergency pump driver; plug into battery power. Focus on resuscitating the patient by increasing mechanical ventilator parameters (FiO2 of 100%, increase respiratory rate, manual ventilation, so on). When the circuit is connected to the functional pump, increase the RPMs to previous setting.

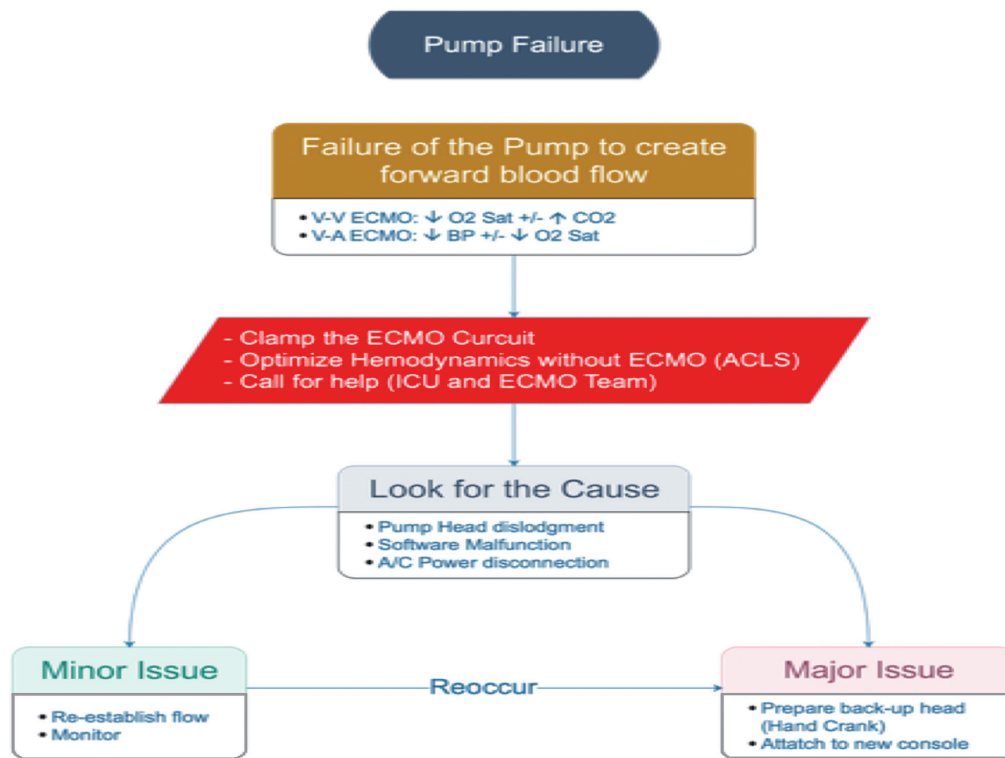


Figure A2 - Pump failure. VV: veno-venous, VA: veno-arterial, ECMO: extracorporeal membrane oxygenation, ICU: intensive care unit, ACLS: advanced cardiac life support

iii. Oxygenator failure (Table A2)

Several predictors and indicators can highlight an impending oxygenator failure: \uparrow pCO₂, \downarrow pO₂, \downarrow patient O₂% saturation, Increase in transmembrane pressure and the presence of plasma or blood leakage from gas outlet. This can be confirmed by doing a pre- and post-oxygenator blood gases. If the PO₂ is not increasing appropriately based on the FiO₂ supply, then oxygenator failure should be suspected.

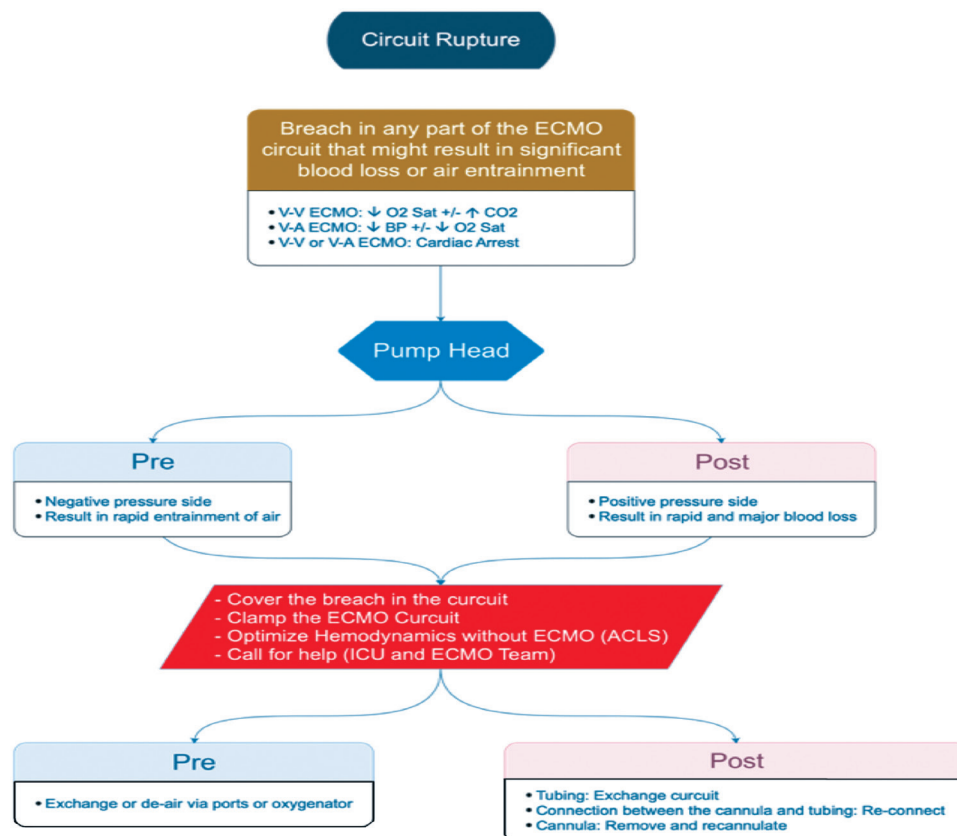
In case of an oxygenator failure, the management should focus on increase sweep and FiO₂ then call perfusionist. Ventilate the patient and maintain cardiac output. If no improvement or patient is deteriorating, then an Urgent ECLS team callout should be carried out and the membrane should be changed.

Table A2 - Possible causes of oxygenator failure.

Cause	Cause	Solution
a) Clots in oxygenator	<ul style="list-style-type: none"> • Low extracorporeal membrane oxygenation blood flow • Inadequate anticoagulation • High pre-oxygenator pressure 	<ul style="list-style-type: none"> ↑ ECMO flow ↑ Anticoagulation
b) Decreased patient O ₂ % saturation	Check pre- and post-oxygenator blood gases	Change oxygenator
c) \downarrow pO ₂	Check pre- and post-oxygenator blood gases	↑ FiO ₂
d) \downarrow pCO ₂	Check pre- and post-oxygenator blood gases	↑ Sweep

iv. Circuit rupture (Figure A3)

In the scenario of a circuit rupture, the ECMO lines should be Clamp the lines before and after the breach. Manage the patient as per advanced cardiac life support (ACLS). And an urgent ECLS team call-out should be carried out.

**Figure A3** - Circuit rupture. VV: veno-venous, VA: veno-arterial, ECMO: extracorporeal membrane oxygenation, ICU: intensive care unit, ACLS: advanced cardiac life support

v. Accidental decannulation (Figure A4)

In case of an accidental decannulation, the ECMO lines should be clamped and the site of cannula on the patient should be compressed. Manage the patient as per ACLS. An Urgent ECLS team callout.

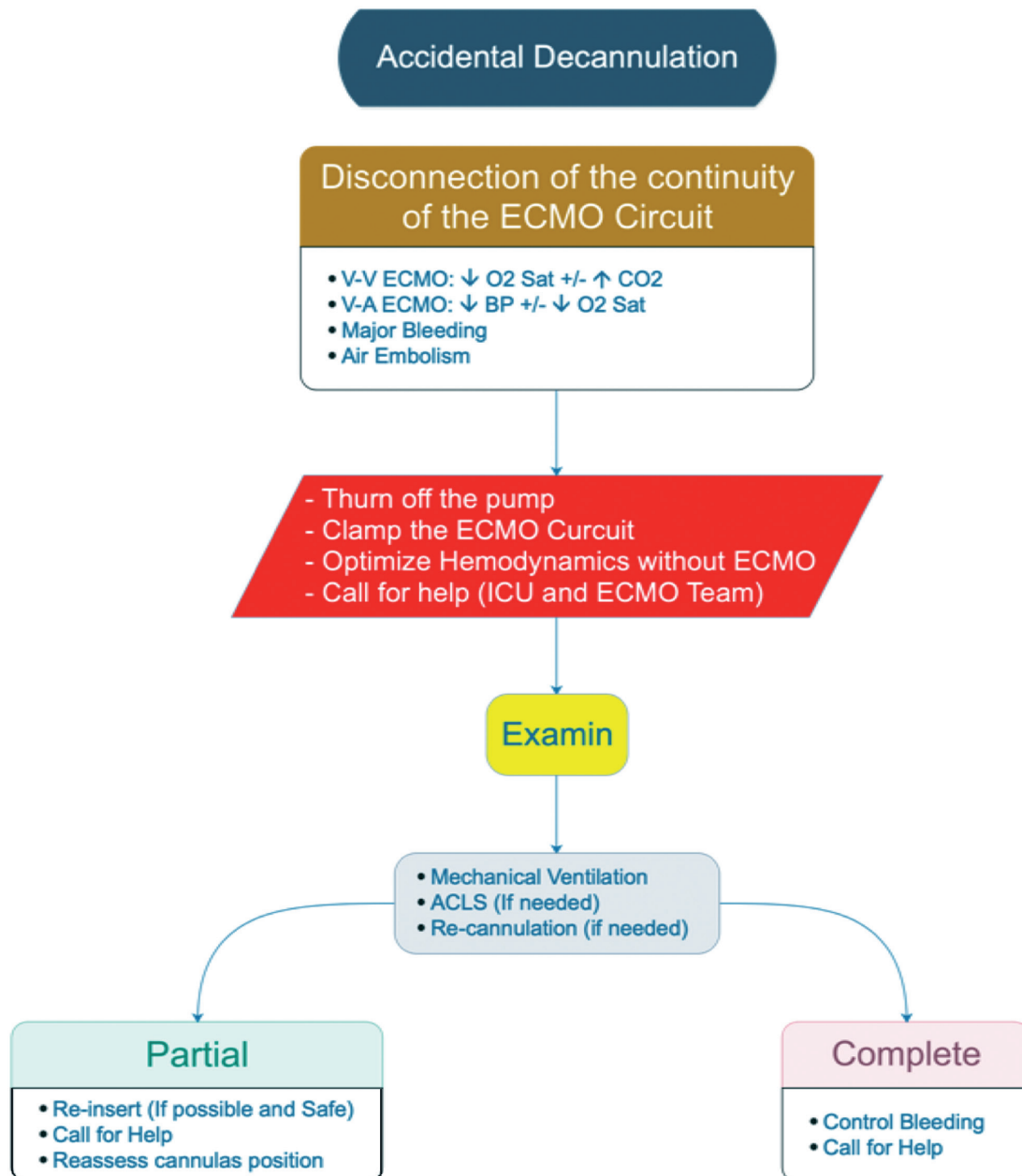


Figure A4 - Accidental decannulation VV: veno-venous, VA: veno-arterial, ECMO: extracorporeal membrane oxygenation, ICU: intensive care unit, ACLS: advanced cardiac life support

vi. Air embolism (Figure A5)

In the scenario of an air embolism, the ECMO lines should be clamped and Switch off the ECMO. The patient should be managed as per ACLS. An urgent ECLS team callout.

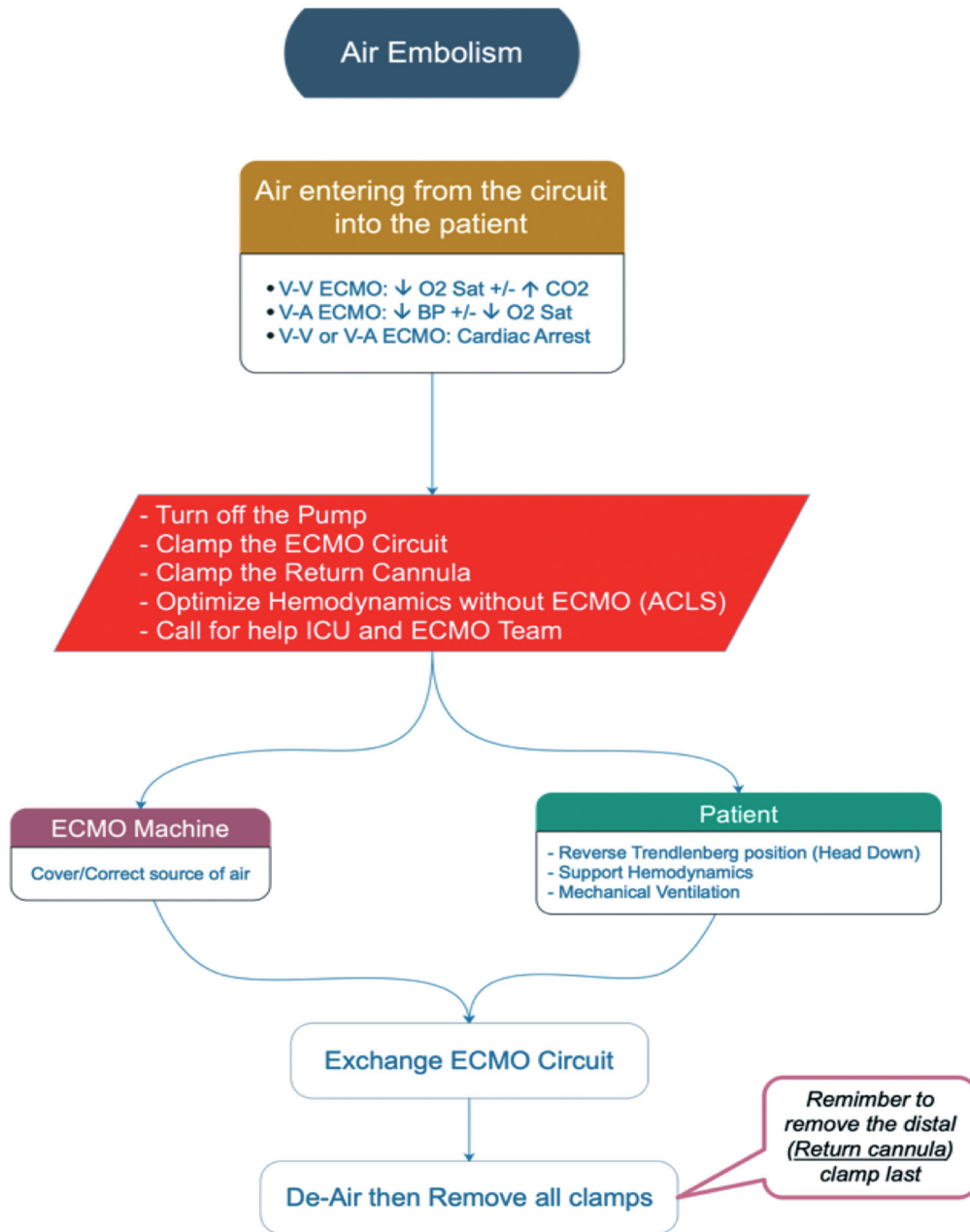


Figure A5 - Accidental decannulation VV: veno-venous, VA: veno-arterial, ECMO: extracorporeal membrane oxygenation, ICU: intensive care unit, ACLS: advanced cardiac life support



Saudi Extracorporeal life Support chapter statement for ECMO support in COVID-19 patients

1. The current evidence is not sufficient to conclude strong recommendation for or against providing ECMO support in COVID-19 patients.
2. Reading into the international experiences in COVID 19, the observation is that the disease has different clinical characteristics comparing to SARS and MERS CoV.
3. Keeping in mind the scattered evidence regarding ECMO management in COVID-19, the Saudi ECLS chapter in the current time is suggesting the following:
 - a. ECMO support decisions for potential COVID-19 patient candidates should be done in group discussion by ECMO experts who work in ECMO centers and has at least 20 ECMO runs per year. We recommend that it should not be a solo physician decision.
 - b. We recommend having an ECMO committee in the ECMO centers to discuss these cases and the decision.
 - c. ECMO might be considered if patient meet all of the following:
 - i. Age < 45 yrs old.
 - ii. No comorbidities (except controlled DM and HTN).
 - iii. Single organ failure (Lung).
 - iv. PaO₂/FiO₂ < 100 on FiO₂ 100% and PEEP > 14.
 - v. Well sedated for achieving RAS of -3.
 - vi. Paralyzed.
 - vii. Completed at least one trial of prone positioning for at least > 16 hrs.
 - viii. Mechanically ventilated for less than 5 days.
 - ix. O₂ Saturation < 85% despite the completion of all of the above treatment options.
 - x. Normal troponin, D dimer, Liver enzymes, and renal function (excluding reversible pre renal failure by only IV fluid management) and with no evidence of myocarditis.
 - d. VV ECMO is the advisable ECMO support mode for COVID- 19 patients that fit the above criteria until further evidence emerge. It might be considered to change the mode of VV ECMO to VAV ECMO if patient needs and after considering patient prognosis and health care worker risk.
4. ECMO Support should be offered only in ECMO experienced centers (>20 ECMO runs/ year) at the current time.
5. The Saudi ECLS chapter strongly recommend, to take into consideration, the high contagiousity and transmission of the disease, and the safety of health care worker providing the ECMO Support.
6. Due to high transmission of the disease, the chapter does not recommend ECMO retrieval missions from city to city with aeromedical transportation. In case, of ground transportation, the risk and benefit assessment has to be done thoroughly discussed with involving ECMO centers expertise.
7. Saudi ECLS chapter members will meet on regular basis to review and assess updates regarding COVID-19 situation in Saudi Arabia & ongoing international literature and evidence.

Dr. Mohamed Azzam MD, FRCPC, FCCM

Chairman, Saudi Extracorporeal Life Support

Dr. Awad Al-Omari MD

President, Saudi Critical Care Society

Figure A6 - The first Saudi extracorporeal life support (ECLS) chapter statement for extracorporeal membrane oxygenation (ECMO) support in COVID-19 patients, released April 9, 2020.



Saudi Extracorporeal Life Support Chapter Statement for ECMO Support in SARS-COV 2/COVID-19 Patients (Version 2)

1. The Chapter released a statement regarding ECMO support in SARS-COV 2/COVID 19 patients in April 9 2020.
2. Since, several international ECMO centers have released their experience of ECMO in SARS-COV 2/COVID 19 patients showing that the survival rate in these patients is approximately 45-50%. The extra corporeal life support organization (ELSO) registry has around 644 COVID 19 cases that received ECMO support and had survival rate of 46%. These numbers are evaluated cautiously by the chapter as the majority of the patients in the registry are still on ECMO and their outcome is still not clear.
3. In Saudi Arabia, the number of COVID 19 patients reached approximately 20,000 cases. This will definitely reflect on the rate of ICU admission and the need for ECMO support.
4. The chapter has evaluated the preliminary results of the NIH trial for treating COVID 19 patients with antiviral treatment (remdesivir). The results are promising and has shown mortality rate decrease. Still not able to conclude, but with a chance of recovery, supporting these patient with ECMO to provide them enough time to recover with the antiviral treatments becomes **a potential reasonable indication.**
5. Therefore, the chapter has reviewed the previous statement and updated its recommendation:
 - a. ECMO support decisions for potential SARS-COV 2/COVID-19 patient should be done in group discussion by ECMO experts who work in ECMO centers and has at least 20 ECMO runs per year. We recommend that it should not be a solo physician decision.
 - b. **A national ECMO Command Center with rapid response team (ECMO RRT) under the MOH should be established to support centers to provide ECMO support appropriately, monitor performance, and govern the distribution of the ECMO machines and supply based on the demand and the utilization in all regions in Saudi Arabia. A proposal is prepared by the chapter and will be shared with MOH.**
 - c. We recommend having a local ECMO committee in the ECMO centers to discuss these cases and the decisions.
 - d. ECMO Support can be considered if patient meet all of the following:
 - i. Age < 55 yrs old.
 - ii. No comorbidities (except controlled DM and HTN).
 - iii. Single organ failure (Lung).
 - iv. PaO₂/FiO₂ < 100 on FiO₂ 100% and PEEP > 10
 - v. Well sedated for achieving RAS of -3.
 - vi. Paralyzed.
 - vii. Completed at least one trial of prone positioning for at least > 16 hrs.
 - viii. Mechanically ventilated for less than 7 days.
 - ix. O₂ Saturation < 85% despite the completion of all of the above treatment options.
 - x. **Normal liver function and renal function (excluding reversible prerenal failure by only IV fluid management) and with no evidence of myocarditis.**
 - e. VV ECMO is the advisable ECMO support mode for SARS-COV 2 COVID-19 patients that fit the above criteria until further evidence emerge. It might be considered to change the mode of VV ECMO to VAV ECMO if patient needs and after considering patient prognosis and health care worker risk.
6. ECMO Support should be offered in ECMO experienced centers (>20 ECMO runs/ year) at the current time. In certain condition and in the appropriate settings, ECMO support can be provided in ECMO providing centers with close supervision and support of experienced ECMO centers through Tele communication or deploying teams on site to assure best practice.
7. The Saudi ECLS chapter strongly recommend, to take into consideration, the high contagiousity and transmission of the disease, and the safety of health care worker providing the ECMO Support.
8. Due to high transmission of the disease, the chapter does not recommend ECMO retrieval missions from city to city with aeromedical transportation. In case, of ground transportation, the risk and benefit assessment has to be thoroughly discussed with involving ECMO centers expertise.

Dr. Mohamed Azzam MD, FRCPC, FCCM

Chairman, Saudi Extracorporeal Life Support

Dr. Awad Al-Omari MD

President, Saudi Critical Care Society

Figure A7 - The second Saudi extracorporeal life support (ECLS) chapter statement for extracorporeal membrane oxygenation (ECMO) support in COVID-19 patients, released May 1, 2020.