

Erratum

# Erratum: Mei, Y., et al. Mechanics Based Tomography: A Preliminary Feasibility Study. *Sensors* 2017, 17, 1075

Yue Mei <sup>1</sup>, Sicheng Wang <sup>2</sup>, Xin Shen <sup>1</sup>, Stephen Rabke <sup>1</sup> and Sevan Goenezen <sup>1,\*</sup>

<sup>1</sup> Department of Mechanical Engineering, Texas A&M University, College Station, TX 77843, USA; meiyue1989@gmail.com (Y.M.); sx1992@tamu.edu (X.S.); pokeg16@tamu.edu (S.R.)

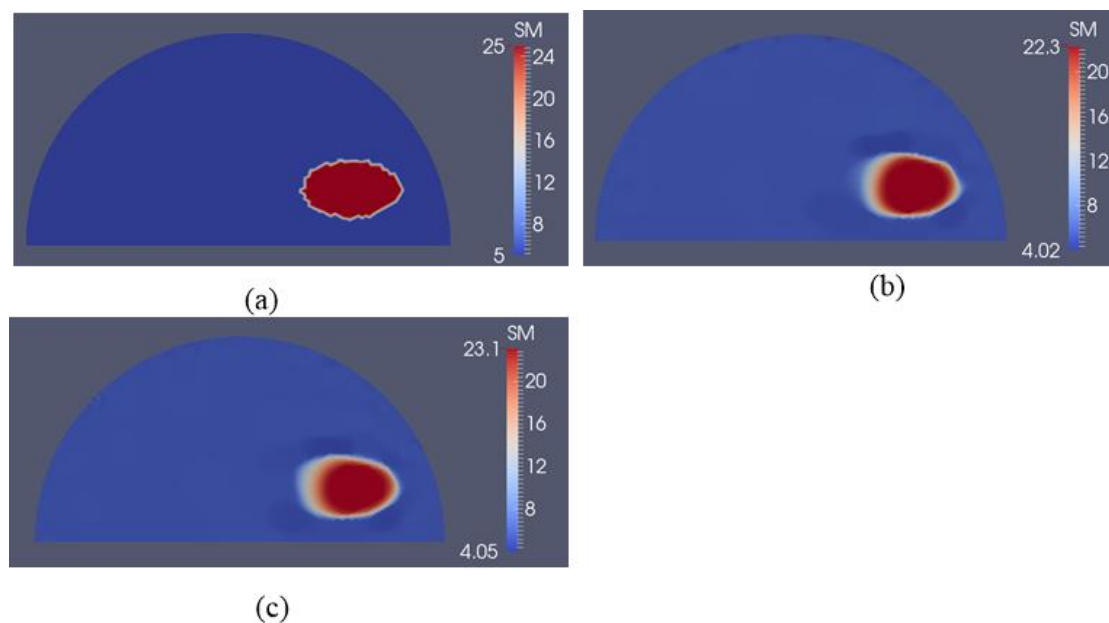
<sup>2</sup> Department of Mathematics, Texas A&M University, College Station, TX 77843, USA; sichengwang0223@gmail.com

\* Correspondence: sevangoenezen@gmail.com; Tel.: +1-979-862-2786

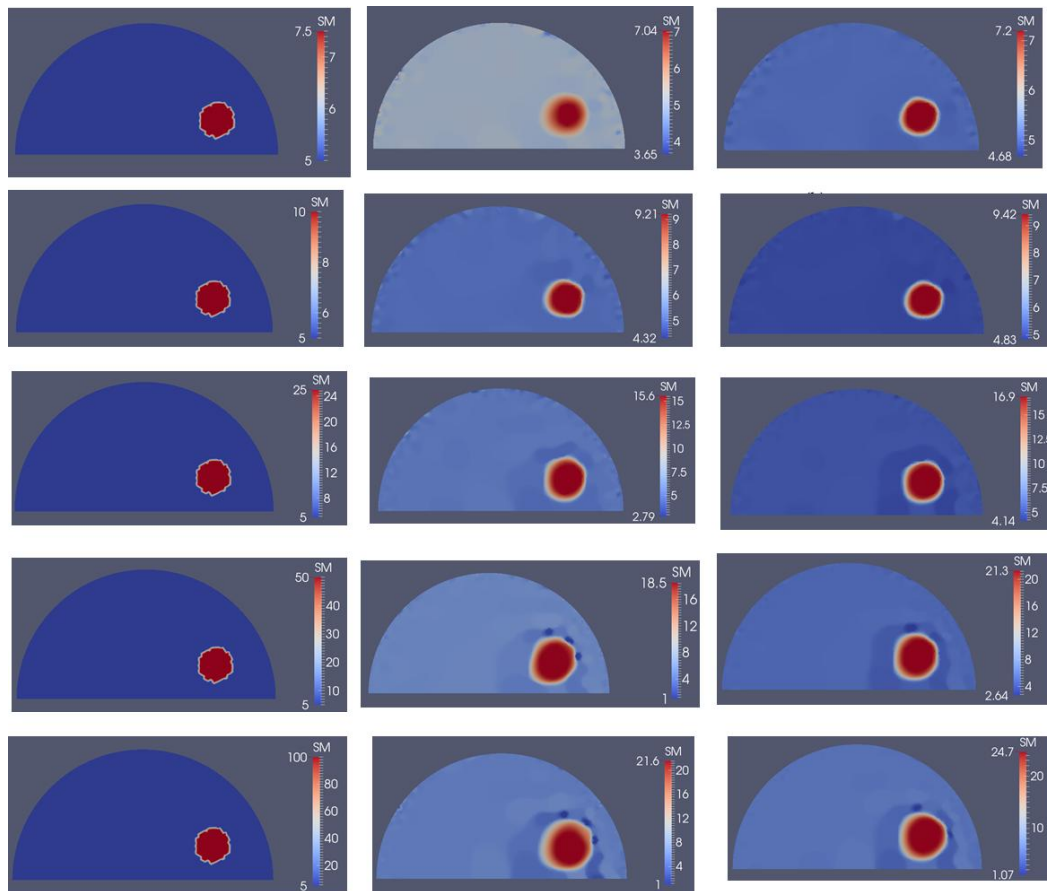
Received: 12 January 2018; Accepted: 23 January 2018; Published: 29 January 2018

The authors wish to correct Figures 12 and 14 in their paper published in *Sensors* [1], doi:10.3390/s17051075, <http://www.mdpi.com/1424-8220/17/5/1075>.

The authors apologize for any inconvenience caused to readers by these changes. The manuscript will be updated, and the original will remain online on the article webpage with a reference to this Erratum.



**Figure 12.** Shear modulus reconstructions with 0.1% noise. (a) Target shear modulus distribution with an elliptically shaped inclusion is defined to study detectability of the inclusion shape. (b,c) Reconstructed shear modulus distribution using 5 and 10 boundary displacement data sets, respectively (unit in the scale bar: kPa). Note: “SM” stands for shear modulus.



**Figure 14.** Problem domain with target shear modulus distribution is defined in the first column with varying shear modulus values in the inclusion from 7.5 (top row) to 100 kPa (bottom row) to test the feasibility range of stiffness detection. Columns 2 and 3 represent the shear modulus reconstructions with 5 and 10 boundary displacement data sets, respectively, using 0.1% noise.

## Reference

1. Mei, Y.; Wang, S.; Shen, X.; Rabke, S.; Goenezen, S. Mechanics Based Tomography: A Preliminary Feasibility Study. *Sensors* **2017**, *17*, 1075. [[CrossRef](#)] [[PubMed](#)]



© 2018 by the authors. Licensee MDPI, Basel, Switzerland. This article is an open access article distributed under the terms and conditions of the Creative Commons Attribution (CC BY) license (<http://creativecommons.org/licenses/by/4.0/>).