

SERPINA11 Inhibits Metastasis in Hepatocellular Carcinoma by Suppressing MEK/ERK Signaling Pathway

Ye Song,^{1,2,*} Zhuo Li,^{1,*}
Lei Li,^{3,*} Houming Zhou,⁴
Ting-Ting Zeng,¹ Chuan Jin,²
Jin-Rong Lin,² Sha Gao,²
Yan Li,¹ Xin-Yuan Guan,^{1,3}
Ying-Hui Zhu¹

¹Sun Yat-sen University Cancer Center, State Key Laboratory of Oncology in South China, Collaborative Innovation Center for Cancer Medicine, Guangzhou, 510060, People's Republic of China;

²Department of Medical Oncology, Affiliated Cancer Hospital and Institute of Guangzhou Medical University, Guangzhou, 510000, People's Republic of China; ³Department of Clinical Oncology, The University of Hong Kong, Hong Kong, People's Republic of China;

⁴Department of Chinese Medicine, The First Affiliated Hospital of Sun Yat-Sen University, Guangzhou, 510080, People's Republic of China

*These authors contributed equally to this work

Correspondence: Ying-Hui Zhu
State Key Laboratory of Oncology in Southern China, Sun Yat-sen University Cancer Center, 651 Dongfeng East Road, Guangzhou, 510060, People's Republic of China
Tel + 86-20-87342283
Email zhuyh@sysucc.org.cn

Xin-Yuan Guan
Department of Clinical Oncology, The University of Hong Kong, Room L10-56, 10/F, Laboratory Block, 21 Sassoon Road, Hong Kong, People's Republic of China
Tel +86 852-39179782
Fax + 852-28169126
Email xyguan@hku.hk

Purpose: By using integrative RNA sequencing analysis, we identified a novel tumor suppressor, *serpin family A member 11* (*SERPINA11*), which is a serine proteinase inhibitor that belongs to the serpin superfamily. However, the function of *SERPINA11* in hepatocellular carcinoma (HCC) remains unclear. The aim of this study was to investigate the role and molecular mechanism of *SERPINA11* in HCC.

Methods: Gene expression patterns of *SERPINA11* were analyzed in tissue samples of HCC patients by qRT-PCR. In vitro and in vivo experiments were performed to characterize the function and molecular mechanism of *SERPINA11* in the tumor metastasis capacity.

Results: *SERPINA11* was downregulated in approximately 50% of HCC and significantly associated with metastasis and poor outcome of patients. Functional study demonstrated that *SERPINA11* could inhibit cell growth, cell migration and tumor metastasis. Mechanistic investigations suggested that *SERPINA11* accelerated urokinase-type plasminogen activator (uPA) degradation to suppress extracellular signal-regulated kinase (ERK1/2) phosphorylation, and thereby subdued metastatic capabilities of HCC cells.

Conclusion: *SERPINA11* plays an important tumor suppressive role in HCC, with possible use as a biomarker and an intervention point for new therapeutic strategies.

Keywords: *SERPINA11*, HCC, metastasis, uPA, ERK

Introduction

Hepatocellular carcinoma (HCC), the fifth most commonly malignancies, ranks as the second leading cause of cancer-related deaths across the globe.¹ Patients are commonly diagnosed at the advanced stage and lose the curative surgery opportunity. The majority of patients have an extremely poor prognosis with a median survival of only 6 months, primarily because of high metastatic and recurrent rate.² Similar to other solid tumors, it is believed that HCC development is a multi-step process which involves the accumulation of multi-genetic and epigenetic alterations.^{3,4} In order to identify new sensitive and specific molecular prognostic markers and therapeutic targets, we performed RNA sequencing (RNA-Seq) on three pairs of matched HCC and their non-tumorous counterparts.^{5,6} Downregulation of *serpin family A member 11* (*SERPINA11*) was detected in all three HCC tumor tissues compared with adjacent non-tumor tissues.

SERPINA11 is a serine proteinase inhibitor belonging to the serpin superfamily, which share a highly conserved tertiary structure with three beta sheets, eight or nine α -helices, and a reactive center loop (RCL) in the C-terminal segment.⁷⁻⁹ Although some

non-inhibitory serpins act as chaperones involved in transport, storage and other roles,^{10–12} the majority of the serpins are inhibitors of serine proteases through a suicide substrate-like mechanism.¹³ The RCL of inhibitory-type serpins contains a unique primary sequence that acts as lure for serine proteases to inhibit its enzymatic activity.¹³ Serpins, distributed in tissues throughout the body, participate in intracellular and extracellular physiological processes, such as inflammation, blood clotting, immune function, tumor suppression, cancer metastasis, remodeling of the extracellular matrix (ECM).^{14–17} Recently, downregulation of *SERPINA11* was found to be correlated with later stages in HCC.¹⁸ However, the molecular function of *SERPINA11* in HCC remains obscure.

In the present study, *in vitro* and *in vivo* functional assays demonstrated the tumor-suppressive effects of *SERPINA11* in HCC. Its molecular mechanism in HCC progression was also investigated.

Materials and Methods

Tissue Specimens and Cell Lines

A total of 155 paired HCC tumor and nontumorous surgical specimens were harvested at Sun Yat-sen University Cancer Center (Guangzhou, China). All patients were diagnosed with primary HCC and had not received preoperative treatments. All clinical samples used in this study were authorized by the Institute Research Ethics Committee at Sun Yat-sen University Cancer Center. The study was conducted in accordance with the Declaration of Helsinki. The HCC cell lines QGY-7703 and PLC8024 were obtained from the Institute of Virology, Chinese Academy of Medical Sciences (Beijing, China). The HCC cell lines HepG2, Hep3B, SMMC7721, QGY-7701, BEL-7402 and Huh7 were purchased from National Collection of Authenticated Cell Cultures (Beijing, China). The cells were cultured in high-glucose DMEM supplemented with 10% fetal bovine serum (FBS).

Quantitative Real-Time Reverse Transcription Polymerase Chain Reaction

Total RNA was extracted from cultured cells or clinical tissues using TRIzol (Invitrogen, Carlsbad, CA, USA), and was reverse transcribed with random primers using a PrimeScript^{RT} reagent Kit (Promega, Madison, WI, USA) according to the manufacturer's instructions. Quantitative real-time reverse transcription polymerase chain reaction (qRT-PCR) was performed with SYBR Green SuperMix (Roche, Basel, Switzerland) and detected by ABI 7900HT Fast Real-Time PCR System (Applied Biosystems, Foster City, CA, USA).

The expression level was normalized against *endogenous glyceraldehyde-3-phosphate dehydrogenase (GAPDH)* for tested genes. [Supplementary Table S1](#) provides a list of the primer sequence used in this study.

Lentiviral-Mediated *SERPINA11* Overexpression and Knockdown

Lentiviral construct containing the full length *SERPINA11* (GeneCopoeia, Germantown, MD, USA) was packaged into 293FT cells using the ViraPower Mix (Invitrogen, Carlsbad, CA, USA) according to the manufacturer's instructions. QGY7701 and BEL7402 cells were stably transfected with *SERPINA11*-expressing lentivirus or lentiviral vector plus 10 mg/mL polybrene (Sigma, St Louis, Missouri, USA). To establish *SERPINA11* knockdown cells, short hairpin RNAs (shRNA) in lentivirus against *SERPINA11* (Genepharma, Shanghai, China) were stably transduced into Huh7 cells. The sequences of the two shRNAs against *SERPINA11* are as follows: shRNA1: 5'-CACCGGACACGTTTCATGGTTCTTGCCGAAGCAAG-AACCATGAACGTGTCC-3'; shRNA2: 5'-CACCGGA CAGCATCAAGGAGCTTTACGAATAAAGCTCCTTG-ATGCTGTCC-3'. The scramble shRNA (Scr)-transfected cells were used as negative controls.

Cell Growth and Foci Formation Assays

For cell growth assay, cells were seeded at a density of 1×10^3 cells per well in 96-well plate. The cell growth rate was measured by Cell Counting Kit-8 (Dojindo Laboratories, Kumamoto, Japan). For foci formation assay, 1×10^3 cells were seeded in each well of a six-well plate. Surviving colonies (>50 cells per colony) were counted with crystal violet staining after 2 weeks of culture. Experiments were performed in triplicate and repeated three times.

Tumor Formation Assay in Nude Mice

Animal care and experiments were performed according to the institutional standard guidelines approved by the Committee of the Use of Live Animals at Sun Yat-sen University Cancer Center. For 7701 lines group, *SERPINA11*- and vector-transfected cells (4×10^6) were subcutaneously injected into the right and left dorsal flank of mice, respectively. For 7402 lines group, *SERPINA11*- and vector-transfected cells (3.5×10^6) were subcutaneously injected into the right and left dorsal flank of mice, respectively. Three weeks after the injection, mice were killed with 80 mg/kg pentobarbital, followed by tumor dissection.

Cell Motility and Invasion Assay

For cell motility assay, cells were added to the upper chambers (Corning Costar, Corning, NY, USA) in serum-free medium. Medium containing 10% FBS served as the attractant in the lower chamber. The migrated cells were fixed, stained with crystal violet and counted under microscope. Invasion assay was performed with Matrigel Invasion Chamber (BD Biosciences, Franklin Lakes, NJ) and the procedures were similar to the migration assay. The experiments were repeated thrice.

In vivo Metastasis Assay

Female BALB/c nude mice at 4–6 weeks were randomly divided into several groups (six mice for 7402 lines group and five mice for 7701 lines group) and inoculated with *SERPINA11*- or vector-transfected cells (1×10^6) via the lateral tail vein. After 8 weeks, mice were killed with 80 mg/kg pentobarbital. Following euthanasia, livers and lungs were harvested, fixed and embedded in paraffin for further H.E. staining. The intrahepatic and pulmonary metastatic nodules were carefully counted.

Antibodies and Western Blot Analysis

Western blot analysis was performed according to the standard protocol with antibodies against SERPINA11 (Sigma, St Louis, Missouri, USA), uPA (Abcam, Cambridge, UK), Phospho-MEK, Phospho-p42/44MAPK, Phospho-p90RSK, Phospho-Elk, p42/44MAPK (Cell Signaling Technology, Danvers, MA), and GAPDH (Santa Cruz Biotechnology, Santa Cruz, CA, USA).

ELISA Assay for SERPINA11

Cells were cultured in serum-free medium for 24 hr, then the medium was collected and centrifuged for 5 minutes at 1000 RPM at 4°C. The supernatant was concentrated by centrifugation using an Amicon[®] Ultra filter (10K MWCO). Then, 100 μ L ultrafiltrate was added to each well to test the concentration of SERPINA11 using the ELISA kits (CUSABIO, Wuhan, China) according to the manufacturer's instructions. The optical densities were measured at 450 nm. Experiments were performed in triplicate and repeated three times.

Immunohistochemistry (IHC)

The tissue slides were first deparaffinized and rehydrated, and then blocked with 3% H₂O₂ for 10 min at room temperature. Antigen retrieval was performed by high-

pressure-cooking the samples in a 10 mM citrate buffer (pH 6.0) for 4 min. Slides were blocked with 5% normal goat serum for 30 min at room temperature and then incubated in monoclonal antibody against SERPINA11 at 4°C overnight. The Envision detection system (Dako, Agilent Technologies, Inc., Santa Clara, CA, USA) was used for color development followed by Mayer's hematoxylin counterstaining.

Octet Red System

Recombinant protein of SERPINA11 and uPA were purchased from Novoprotein Scientific Inc. (Shanghai, China) and Sino Biological Inc. (Beijing, China), respectively. The purified human protein of SERPINA11 contained a Fc tag while uPA contained a His tag. The Octet Red System (ForteBio, Menlo Park, CA, USA) was carried out following the manufacturer's instructions. SERPINA11 was immobilized to the SA sensor and increasing concentrations (0, 13.6, 27.2, 54.4, 108.7 and 217.4 nM) of uPA were run through the protein-coated biosensors. Octet Red System Data Analysis software was used to analyze the association rate, dissociation rate and affinity constant.

Cycloheximide Chase Assay

HCC cells were pretreated with 10 μ M cycloheximide (Sigma-Aldrich, St. Louis, MO, USA) for 10 min, followed by an incubation with or without recombinant SERPINA11 (10 ng/mL). The cell extracts from 0, 2, 6, 12 hr treatment groups were assessed by Western blotting to determine the expression of uPA.

Statistical Analysis

SPSS standard V.16.0 (SPSS, Inc., IL, USA) was used for data analysis. Results were presented as means \pm SD of three independent experiments. The Student's *t*-test was used for statistical comparisons of two independent groups. The disease-specific survival time of HCC patients with different SERPINA11 expression levels was analyzed by Kaplan–Meier analysis with Log rank tests. The correlation between SERPINA11 expression and clinicopathological characteristics of HCC patients was explored by Pearson χ^2 test. Spearman correlation was used to assess the relationship between SERPINA11 and uPA expression. Univariable and multivariable Cox proportional hazard model with a forward stepwise procedure was used to estimate the survival hazard. *P* values of <0.05 were considered statistically significant.

Results

Downregulation of *SERPINA11* is Frequently Detected in HCC

Our previous RNA-seq data showed that *SERPINA11* was downregulated in all three tested HCC tissues.¹⁹ We first validated this finding in TCGA datasheet. The results demonstrated that *SERPINA11* expression was significantly lower in tumor tissues than that in normal liver tissues (Figure 1A). The expression pattern of *SERPINA11* was subsequently tested in 155 pairs of primary HCCs samples collected at Sun Yat-sen University Cancer Center (SYSUCC) by qRT-PCR. The results showed that *SERPINA11* was significantly downregulated in 75 of 155 (48.4%) of HCC tissues compared with their nontumor counterparts (defined as >2-fold change; $P < 0.001$, paired Student's *t* test; Figure 1B, left panel). The average level of *SERPINA11* expression in tumor specimens was dramatically lower than that in nontumor specimens (2.62 versus 5.21, $P < 0.001$, paired Student's *t*-test; Figure 1B, right panel). Consistently, downregulation of *SERPINA11* protein was detected in 6 of 10 randomly selected HCC tissues by Western blotting and IHC (Figure 1C and D). The expression levels of *SERPINA11* in eight HCC cell lines and one immortalized liver cell line MIHA were also tested by Western blotting. Downregulation of *SERPINA11* was detected in 4 of 8 HCC cell lines (SMMC7721, QGY7701, QGY7703, BEL7402) compared with MIHA (Figure 1E).

SERPINA11 Downregulation is Associated with HCC Metastasis and Poor Prognosis

To determine clinical significance of *SERPINA11* in HCC, the association of *SERPINA11* with clinical-pathological features from 155 HCC patients was statistically analyzed. The results showed that the low expression of *SERPINA11* was significantly correlated with tumor size ($P = 0.037$), the completeness of the tumor encapsulation ($P = 0.035$) and metastasis and recurrence ($P = 0.024$, Table 1). To address the prognostic significance of *SERPINA11* in HCC, Kaplan-Meier analysis and Log rank test were performed. As shown in Figure 1F, resected HCC patients with low *SERPINA11* expression had poorer overall survival (OS) than those with high *SERPINA11* expression ($P = 0.020$, Log rank test). TCGA database also suggested that disease-free survival rate of HCCs with low *SERPINA11* expression were significantly lower than those with high *SERPINA11* expression ($P = 0.0054$, Log rank test,

Figure 1G). Moreover, multivariate Cox regression analysis showed that *SERPINA11* expression was an independent prognostic factor for resected HCC patients ($P = 0.043$, Table 2). These results imply that *SERPINA11* plays an important role in the pathogenesis of HCC. Further, we evaluated the clinical significance of *SERPINA11* in HCC patients with or without Hepatitis B virus (HBV) infection. The results showed that the low expression of *SERPINA11* was significantly correlated with metastasis and recurrence in HBsAg positive cases ($P = 0.013$, Supplementary Table S2), while tumor size in HBsAg negative cases ($P = 0.032$, Supplementary Table S3). In a stratified survival analysis according to the HBV infection, no significant difference in OS was observed in patients with or without HBV infection (Supplementary Figure 1A).

SERPINA11 has Tumor-Suppressive Ability

To determine the tumor-suppressive potential of *SERPINA11* in HCC, *SERPINA11* was cloned into a lentiviral vector and stably transfected into two HCC cell lines, BEL-7402 and QGY-7701. Empty vector-transfected cells were used as controls. The enhanced expression of *SERPINA11* in stable transfectants was confirmed by qRT-PCR and Western blotting (Figure 2A and B). Ectopic secretion of *SERPINA11* in conditional medium was determined by ELISA assay (Figure 2C). Compared with control cells, the ectopic expression of *SERPINA11* effectively suppressed cell growth rate ($P < 0.05$, Student's *t* test, Figure 2D) and foci formation frequency ($P < 0.01$, Student's *t*-test, Figure 2E). To explore the in vivo tumor suppressive capacity of *SERPINA11*, *SERPINA11* stably expressing BEL-7402 (*SER11-7402*) and QGY-7701 (*SER11-7701*) cells were subcutaneously injected into nude mice, while Vec-7402 or Vec-7701 cells were used as controls. Consistent with in vitro results, tumor formation in nude mice was markedly dampened in *SERPINA11*-expressing cells ($P < 0.05$, Student's *t*-test, Figure 2F).

SERPINA11 Suppresses HCC Metastasis

Since downregulation of *SERPINA11* has been significantly associated with HCC metastasis, its potential effects on cell migration and invasion were further investigated by both in vitro and in vivo assays. Cell migration and invasion assays revealed that *SERPINA11* significantly hampered cell motility and invasiveness, compared with the control cells, respectively ($P < 0.01$, Figure 3A). To further validate the in vivo suppressive effect of *SERPINA11* on tumor metastasis, *SERPINA11*-expressing or empty vector-transfected cells were injected into the tail vein of nude mice. Eight weeks after injection, tested mice were sacrificed, and the metastatic nodules formed in the

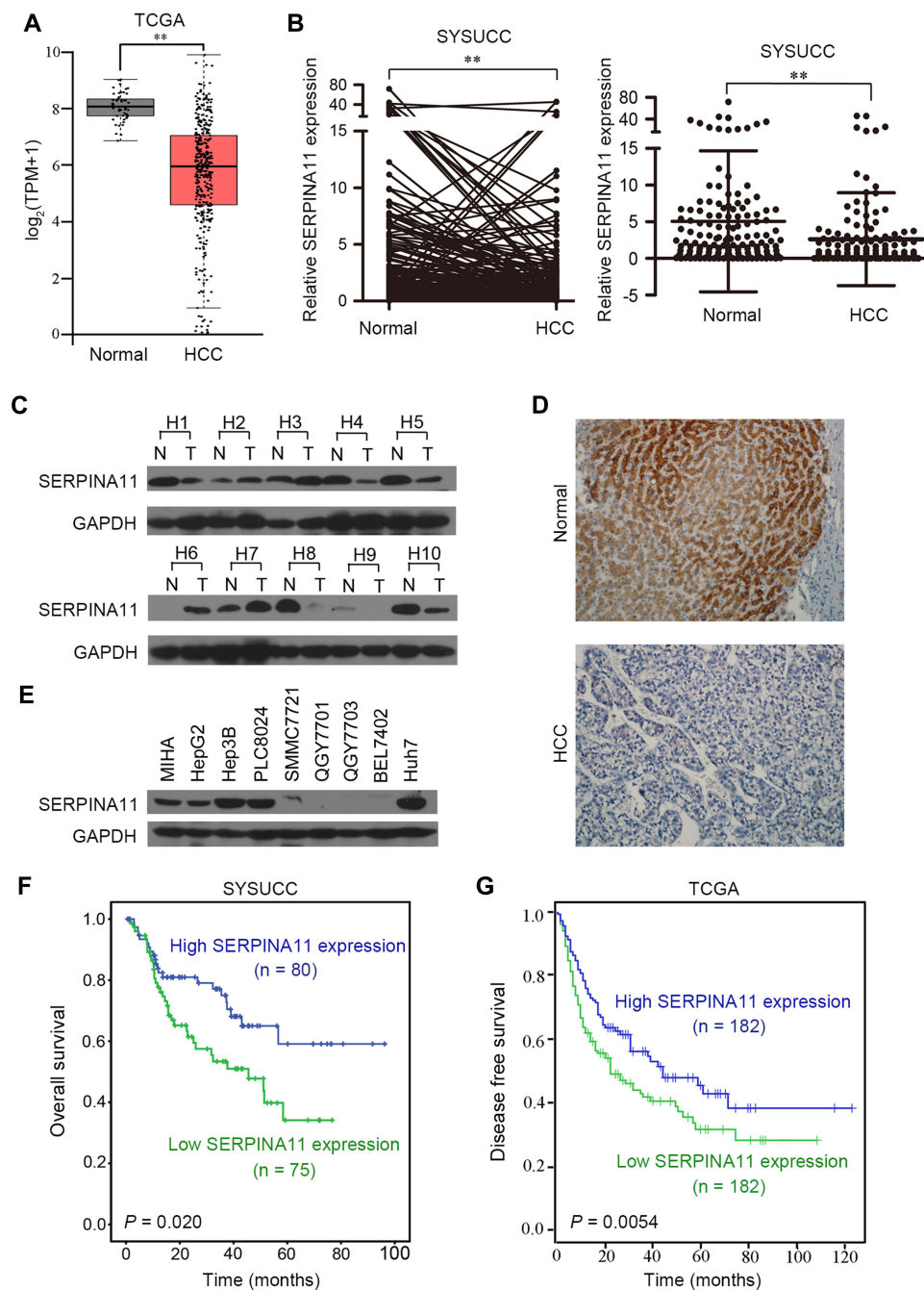


Figure 1 *SERPINA11* is frequently downregulated in HCCs. **(A)** RNA sequencing expression of *SERPINA11* was analyzed based on TCGA data. TPM, transcripts per million. **, $P < 0.01$, one-way ANOVA. **(B)** The expression of *SERPINA11* was tested in 155 pairs of primary HCCs and their adjacent normal tissues collected at Sun Yat-sen University Cancer Center (SYSUCC) by qRT-PCR. Expression of *GAPDH* was used as an internal control. **, $P < 0.01$, paired Student's *t*-test. **(C)** *SERPINA11* protein level was detected in 10 randomly selected HCC tissues by Western blotting. **(D)** Representative of *SERPINA11* expression in normal liver tissues and HCC tissues detected by immunostaining with anti-*SERPINA11* antibody (brown). **(E)** Western blot analysis of the expression of *SERPINA11* in one immortalized HCC cell line (MIHA) and eight HCC cell lines. *GAPDH* was used as an endogenous control. **(F and G)** Kaplan–Meier analysis showed that low expression of *SERPINA11* was related to poorer survival of HCC patients in both SYSUCC cohort ($P = 0.020$, Log rank test) and TCGA database ($P = 0.0054$, Log rank test).

lungs and livers were counted. Less pulmonary metastatic nodules were observed in mice injected with *SERP11-7402* or *SERP11-7701* cells, compared with the mice injected with control cells (3.4 ± 1.60 vs 0 ± 0 , $P < 0.01$ for 7402; 6.4 ± 1.97 vs 1.0 ± 0.63 , $P < 0.01$ for 7701, Student's *t*-test, Figure 3B).

However, no visible metastatic nodule was observed in the livers of mice (data not shown). Histologic study confirmed that the nodules on the surfaces of mice lungs were metastatic tumors (Figure 3C). These results suggest that *SERPINA11* effectively impedes HCC metastasis in vitro and in vivo.

Table 1 Association of *SERPINA11* expression with Clinicopathological Features in HCCs

Clinical Features	Cases	<i>SERPINA11</i> Expression		P value
		High Level (%)	Low Level (%)	
Age (years old)				0.438
≤60	121	60 (49.6%)	61 (50.4%)	
>60	34	20 (58.8%)	14 (41.2%)	
Gender				0.795
Male	139	71 (51.1%)	68 (48.9%)	
Female	16	9 (56.2%)	7 (43.8%)	
HBsAg				0.483
Negative	21	9 (42.9%)	12 (57.1%)	
Positive	134	71 (53.0%)	63 (47.0%)	
AFP (μg/L)				0.259
<400	90	50 (55.6%)	40 (44.4%)	
≥400	65	30 (46.2%)	35 (53.8%)	
Cirrhosis				0.347
No	36	16 (44.4%)	20 (55.6%)	
Yes	119	64 (53.8%)	55 (46.2%)	
Tumor size (cm)				0.037
≤5	78	47 (60.3%)	31 (39.7%)	
>5	77	33 (42.9%)	44 (57.1%)	
Microsatellite formation				0.853
Absent	116	59 (50.9%)	57 (49.1%)	
Present	39	21 (53.8%)	18 (46.2%)	
Tumor encapsulation				0.035
Complete	46	30 (65.2%)	16 (34.8%)	
None	109	50 (45.9%)	59 (55.1%)	
Vascular invasion				0.122
Absent	122	67 (54.9%)	55 (45.1%)	
Present	33	13 (39.4%)	20 (60.6%)	
Metastasis and recurrence				0.024
Negative	73	45 (61.6%)	28 (38.4%)	
Positive	82	35 (42.7%)	47 (57.3%)	

Note: Statistical significance ($P < 0.05$) is shown in bold.

Knockdown of *SERPINA11* Promotes HCC Growth and Metastasis

To further confirm the tumor-suppressive ability of endogenous *SERPINA11*, RNA interference (RNAi) was used to knock down *SERPINA11* expression in Huh7 cells with high endogenous *SERPINA11* expression. qRT-PCR and Western blot analysis demonstrated that the introduction of two specific short hairpin RNAs (shRNA) against *SERPINA11* could dramatically reduce *SERPINA11* expression (Figure 4A). Knockdown of

SERPINA11 enhanced the cell growth rate, foci formation efficiency, and the abilities of migration and invasion (Figure 4B–D).

SERPINA11 Prohibits Cell Metastasis Through Accelerating Urokinase-Type Plasminogen Activator (uPA) Degradation

SERPINA11 is a member of the serpin superfamily and its conserved structure suggests that *SERPINA11* may have

Table 2 Cox Proportional Hazard Regression Analyses for Overall Survival

Clinical Features	Univariate Analysis		Multivariate Analysis	
	HR (95% CI)	P value	HR (95% CI)	P value
Age	0.918 (0.521–1.617)	0.767	–	–
Gender	1.998 (0.867–4.606)	0.104	–	–
HBsAg	1.247 (0.621–2.504)	0.535	–	–
Cirrhosis	0.607 (0.362–1.017)	0.058		
Tumor size	1.719 (0.840–2.768)	0.063		
AFP	2.162 (1.368–3.415)	0.001	2.054 (1.190–3.547)	0.010
Microsatellite Formation	1.998 (1.250–3.192)	0.004	2.009 (1.107–3.648)	0.022
Tumor encapsulation	0.536 (0.295–0.975)	0.041	0.777 (0.357–1.691)	0.524
Vascular invasion	4.792 (2.942–7.803)	0.001	1.712 (0.948–3.093)	0.075
Metastasis and recurrence	9.892 (6.983–14.502)	0.001	7.828 (6.573–12.639)	0.531
<i>SERPINA11</i> expression	1.864 (1.092–3.181)	0.022	1.273 (1.081–2.875)	0.043

Note: Statistical significance ($P < 0.05$) is shown in bold.

Abbreviations: HR, hazard ratio; CI, confidence interval.

the serine proteinase inhibitor activity.⁸ uPA, a well-known mediator of tumor cell invasion,¹⁷ could be inhibited by several members of serpin family: SERPINE1, SERPINB2, SERPINA5, SERPINE2 and SERPINI1.^{20–24} We first explored the potential relationship between SERPINA11 and uPA in HCC cell lines. Interestingly, protein expression of uPA was strongly negatively correlated with SERPINA11 (Figure 5A). Moreover, the protein levels of uPA were significantly decreased in *SERPINA11*-transfected cells compared with vector-transfected cells, while the RNA expression levels were not obviously affected (Figure 5B; Supplementary Figure 1B). Conversely, knockdown of *SERPINA11* in Huh7 cells yielded opposing effects without impacting uPA RNA expression (Figure 5B; Supplementary Figure 1C). In addition, we verified the interaction between SERPINA11 and uPA by Octet Red System (Figure 5C). The KD (affinity constant) value for the binding of SERPINA11 to uPA was 1.13×10^{-8} Mol. The high affinity of uPA for SERPINA11 implies that SERPINA11 may act as a new serine proteinase inhibitor to uPA.

It has been reported that serine proteinase inhibitor can bind uPA to form a stable serpin-protease complex, which not only inhibits the proteolytic activity of uPA, but also promotes the endocytosis and degradation of uPA.^{16,25,26} In light of a strong negative correlation between SERPINA11 and uPA in HCC cell lines and the decreased protein level of uPA in *SERPINA11*-expressing cells, we examined the decay rate of uPA in HCCs by cycloheximide (CHX) chase assay. Incubation of 7402 and 7701 cells with

recombinant SERPINA11 (rSERPINA11) at 10 ng/mL notably decreased the half-life of uPA (Figure 5D). Our results indicate that *SERPINA11* suppresses cell metastasis through accelerating uPA degradation in HCC cells.

SERPINA11 Inhibits Cell Metastasis by Suppressing MEK/ERK Signaling

The uPA system promotes tumor metastasis not only by breaking down the ECM,¹⁰ but also by activating diverse signal pathways.²⁷ It has been reported that binding of uPA to uPAR can activate MEK/ERK, p38 MAPK and PI3K/Akt signaling pathways.^{27–30} To further gain insight into detail mechanism by which *SERPINA11* inhibits cell metastasis in HCC, we analyzed the effects of *SERPINA11* expressing or knockdown on the activation of uPA downstream signaling pathways. The results showed that the phosphorylation levels of MEK1/2, ERK1/2, Elk1 were decreased in *SERPINA11*-expressing cells but were increased in *SERPINA11*-knockdown cells (Figure 5E). Increased expression of phosphorylated p90RSK was detected in *SERPINA11*-knockdown Huh7 cells compared with their control cells (Figure 5E). However, phosphorylated p90RSK could not be detected in neither 7402 nor 7701 cells. These results suggest that *SERPINA11* influence cell migration and invasion via suppressing uPA downstream MEK/ERK signaling pathway.

Discussion

SERPINA11 belongs to the serpins superfamily and is predicted to own a serine proteinase inhibitor activity for

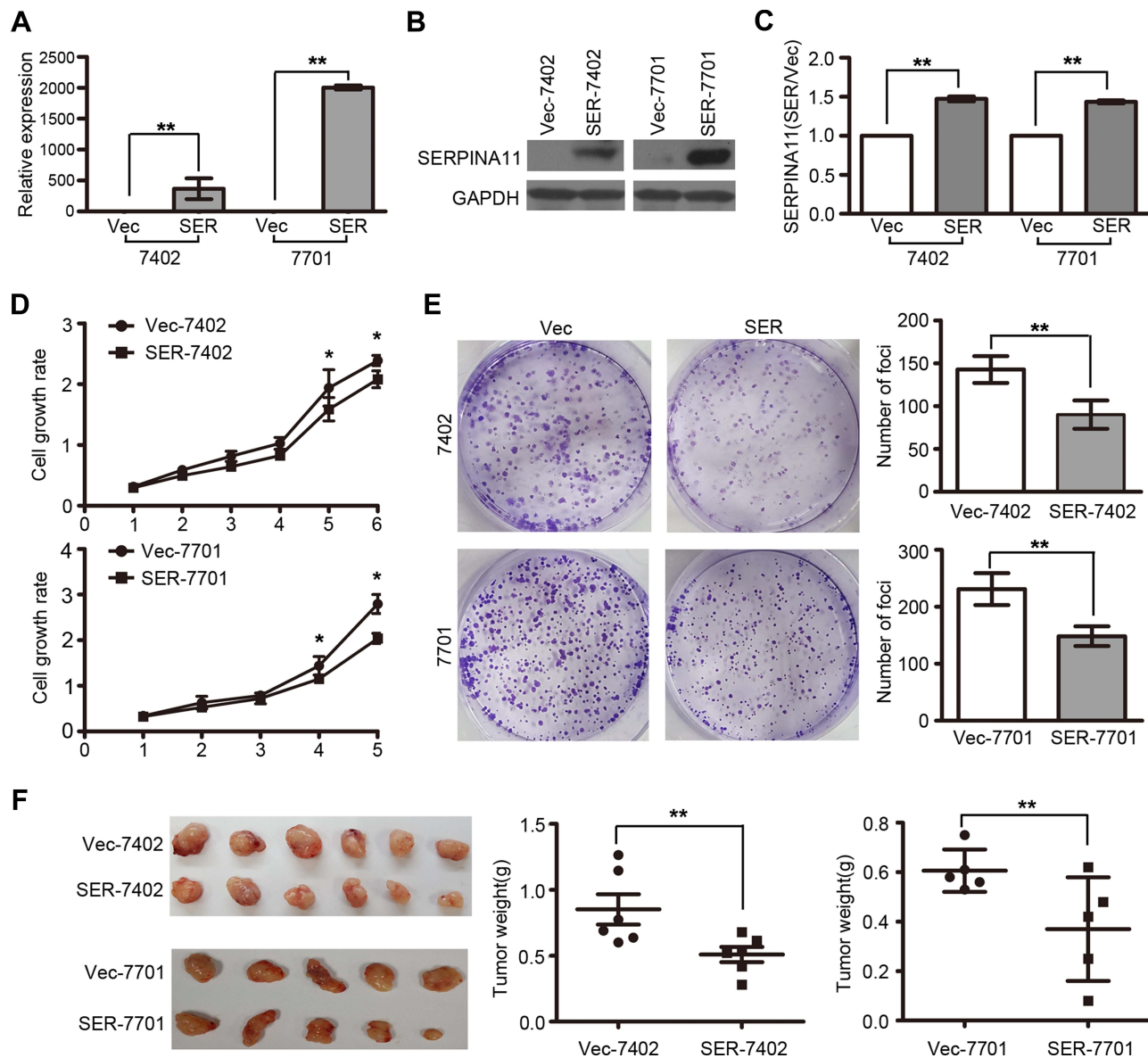


Figure 2 *SERPINA11* suppresses HCC growth in vitro and in vivo. **(A–B)** The enhanced expression of *SERPINA11* was confirmed by qRT-PCR and Western blotting in *SERPINA11*- or vector-transfected cells. The data are represented as the mean \pm s.d. of three independent experiments. **, $P < 0.01$, Student's *t*-test. **(C)** ELISA assay showed secretion of *SERPINA11* in culture medium. **, $P < 0.01$, Student's *t*-test. **(D)** XTT assay showed the cell growth rate was inhibited in *SERPINA11*-transfected cells in XTT assay. *, $P < 0.05$, Student's *t*-test. **(E)** The foci formation ability was suppressed in *SERPINA11*-transfected cells compared with the vector-expressed cells. The results are expressed as the mean \pm s.d. from three independent experiments. **, $P < 0.01$, Student's *t*-test. **(F)** Representative images of tumors formed in nude mice injected with *SERPINA11*- or vector-transfected cells. Tumor weights are summarized in dot charts. Bars, SD. **, $P < 0.01$, Student's *t*-test.

its conserved protein structure.^{7,8} *SERPINA11* is highly expressed in the liver, implying it may have some important roles in maintaining the normal physiological function of liver.³¹ Our RNA-Seq results demonstrated that *SERPINA11* was downregulated in HCC tumor tissues compared with their corresponding non-tumor tissues. Consistent with the RNA-Seq profiling data, downregulation of *SERPINA11* in RNA and protein level was detected in HCC tissues. Moreover, correlation of clinicopathological data showed that downregulation of *SERPINA11* was

significantly associated with HCC metastasis and poor outcome for resected HCC patients. Further investigation may be needed to determine the clinical significance of *SERPINA11* in unresectable cases. All these data suggest that *SERPINA11* is an important tumor suppressor gene in HCC development and progression.

Functional studies in vitro and in vivo depicted that *SERPINA11* dampened HCC cell growth, motility, and invasiveness. Serine proteases are the second largest family of proteases and have long been associated with

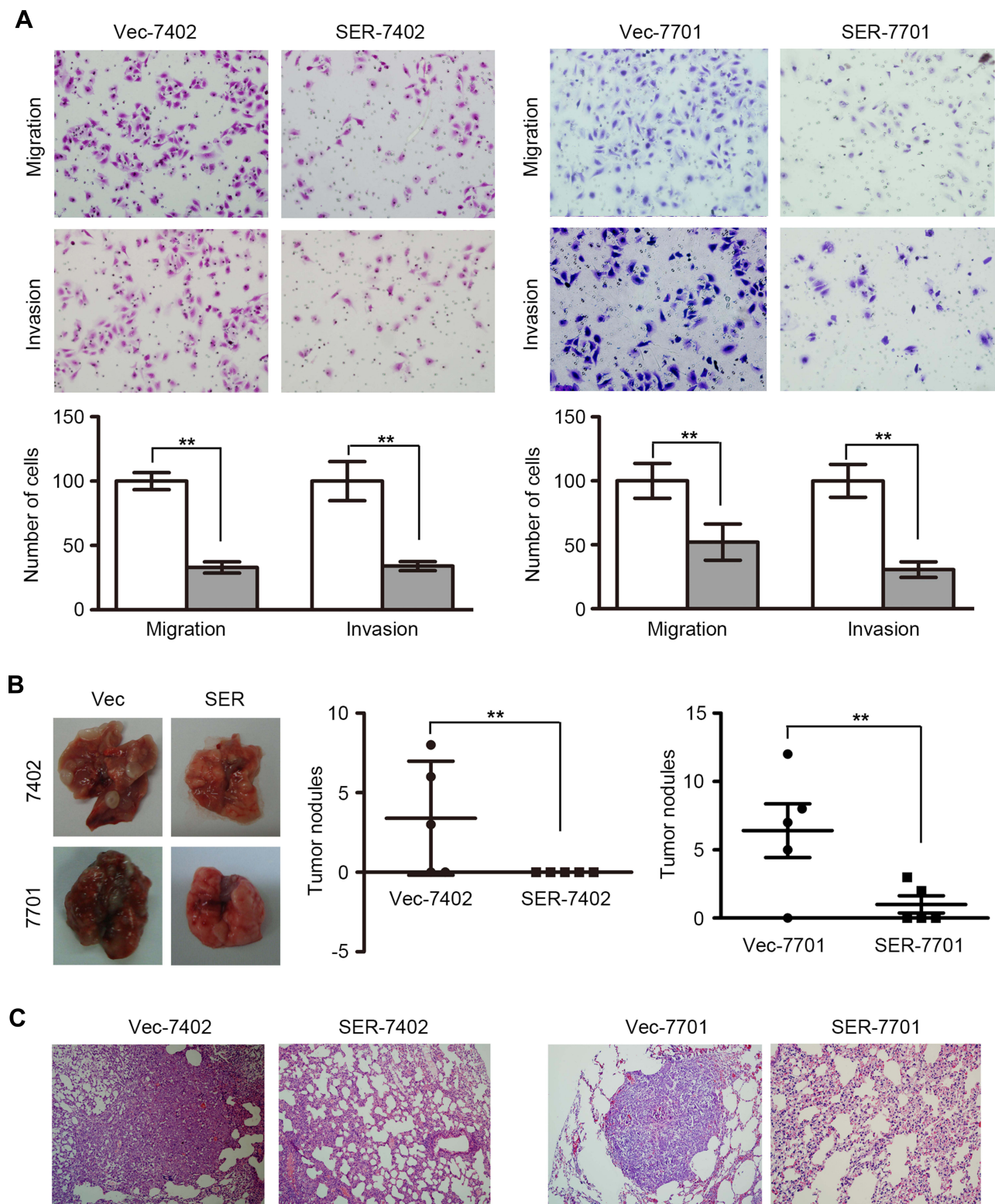


Figure 3 *SERPINA11* impedes HCC metastasis. **(A)** Transwell assay and Matrigel invasion assay showed that *SERPINA11* significantly suppressed cell migration and invasion. Representative images of invaded cells are shown, and the results were summarized respectively. 200× magnification. The values are expressed as the mean ± s.d. of three independent experiments. ** $P < 0.01$, Student's *t*-test. **(B)** Representative images and summary of pulmonary metastatic nodules induced by *SERPINA11*- or Vec-transfected cells. The values are expressed as the mean ± s.d. of five mice. ** $P < 0.01$, Student's *t*-test. **(C)** H&E staining confirmed that the nodules on the surfaces of mice lungs were metastatic tumors.

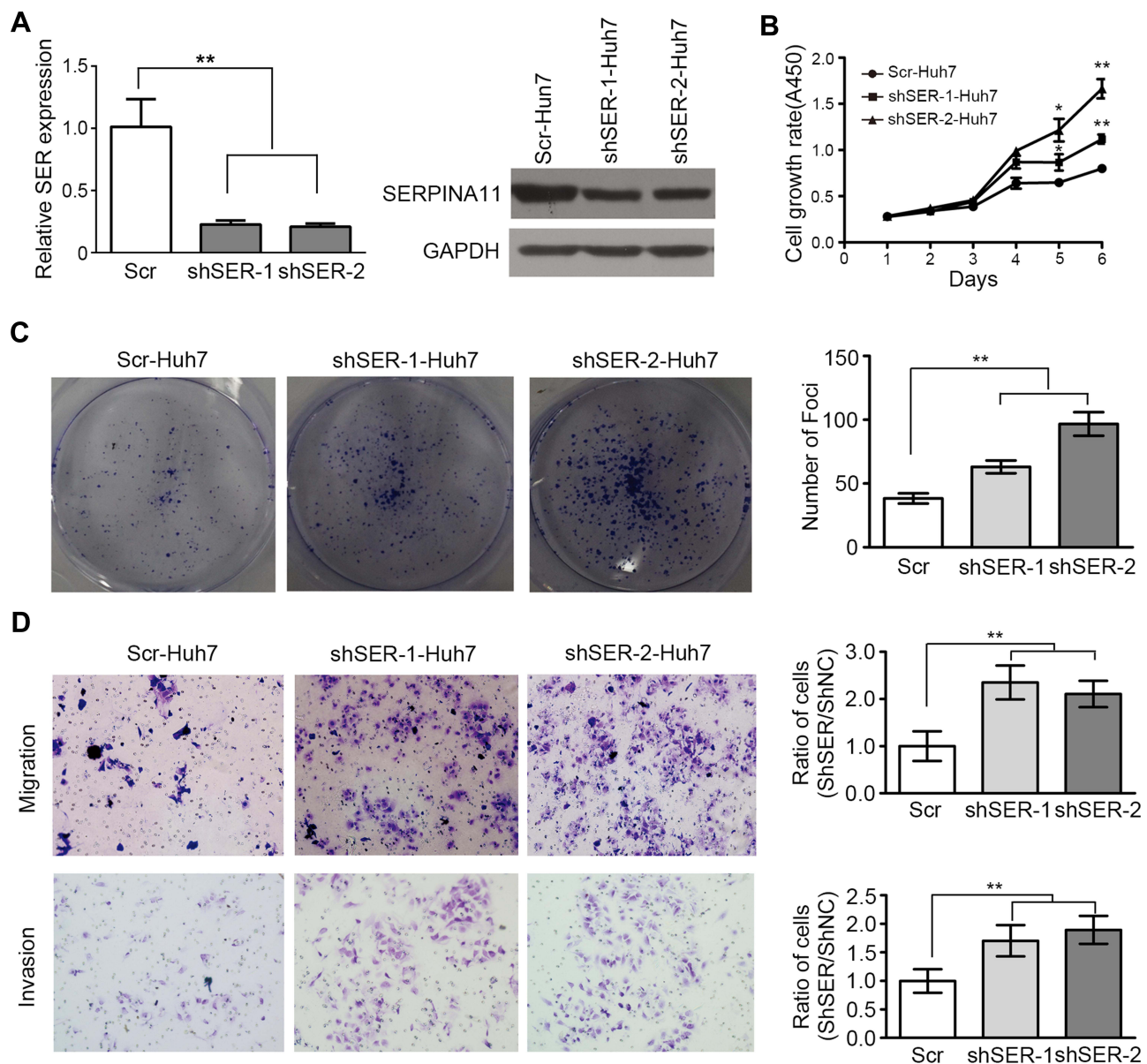


Figure 4 Knockdown of *SERPINA11* promotes tumor growth and metastasis. **(A)** Two specific short hairpin RNAs (shSER-1 and shSER-2) against *SERPINA11* effectively knocked down *SERPINA11* expression, as determined by qRT-PCR and Western blotting. Scramble shRNA (Scr) was used as negative control. **, $P < 0.01$, Student's *t*-test. **(B)** XTT assay revealed that knockdown of *SERPINA11* enhanced the cell growth rate. The data are represented as the mean \pm s.d. of three independent experiments. *, $P < 0.05$, **, $P < 0.01$, Student's *t*-test. **(C)** Knockdown of *SERPINA11* increased foci formation efficiency. The results are expressed as the mean \pm s.d. from three independent experiments. **, $P < 0.01$, Student's *t*-test. **(D)** Representatives and summary of migration and Matrigel invasion assays showed that knockdown of *SERPINA11* increased cell migrative and invasive abilities. The values are expressed as the mean \pm s.d. of three independent experiments. **, $P < 0.01$, Student's *t*-test.

tumor invasion, angiogenesis, and metastases.^{16,17,20} uPA-mediated plasmin generation through extracellular matrix is an important proteolytic event in cancer cell invasion.^{27,30,32} Moreover, recent evidence indicates that the uPA system is involved in cancer cell invasion through plasmin independent mechanisms.^{27,29} Serine proteinase inhibitors can bind uPA to form a serpin-protease covalent complex, and subsequently associate with low-density lipoprotein receptor (LDLR) proteins, leading the uPA-

uPAR complex to be endocytosed and degraded.^{25,26,33} It has been found that the degradation of uPA is in parallel with increased expression of SERPINE1 (the serine proteinase inhibitor E1) in endometrial stromal cells.³⁴ In the present study, we elucidated that *SERPINA11* could bind uPA and act as a serine proteinase inhibitor to accelerate uPA degradation.

HCC has high rates of intrahepatic metastasis. It is well known that the uPA system is involved in cancer cell

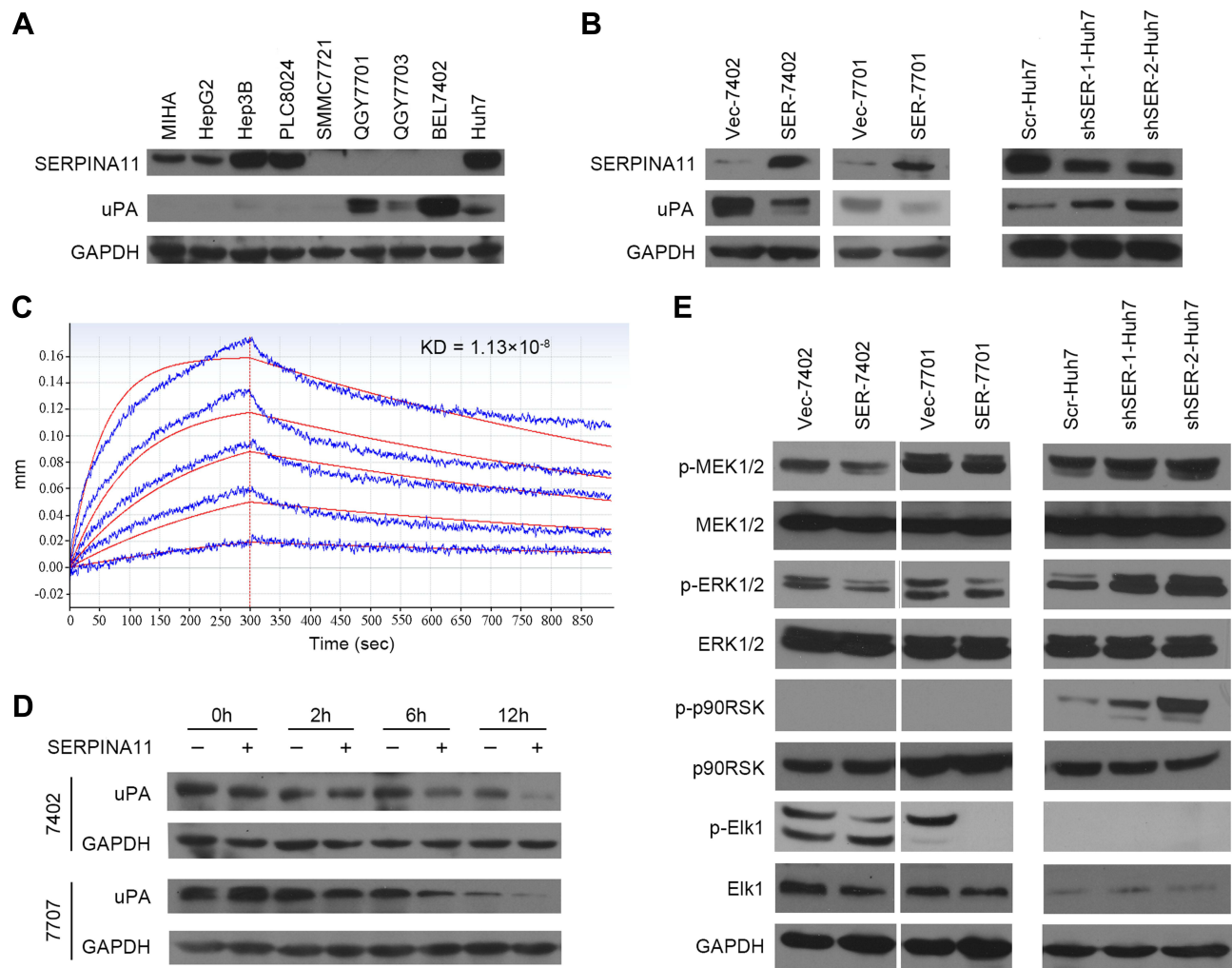


Figure 5 *SERPINA11* suppresses MEK/ERK signaling via accelerating the degradation of uPA. **(A)** Western blotting analyzed the expression of uPA and *SERPINA11* in MIHA and eight HCC cell lines. GAPDH was used as an endogenous control. **(B)** The protein levels of uPA were detected in *SERPINA11* overexpression or knockdown cells. **(C)** Real-time association and dissociation analysis of *SERPINA11* to uPA by Octet Red System. *SERPINA11* was immobilized to the Octet Red system (SA sensor) and uPA were run through the coated sensors. The KD value for the binding of *SERPINA11* to uPA was 1.13×10^{-8} Mol. **(D)** CHX assays showed the degradation rate of uPA in *SERPINA11*-treated and control cells. GAPDH was used as a loading control. **(E)** The phosphorylation levels of MEK1/2, ERK1/2, Elk1, p90RSK were compared by Western blot analysis. GAPDH used as a loading control.

invasion through degrading the extracellular matrix.^{35,36} uPA is overexpressed in HCC, which leads to invasiveness and metastasis.³⁷⁻³⁹ uPA and uPAR convert plasminogen into the active plasmin to activate metalloproteinases (MMPs), then degrade the ECM.⁴⁰ Here, we analyzed the activity of MMP-2 and MMP-9 in *SERPINA11*-expressing cells and found that there was no difference between *SERPINA11* expression cells and control cells (data not shown). It reminds us that there might be an alternative mechanism to explain the effect of *SERPINA11*-mediated uPA deficiency on HCC metastasis. Moreover, recent evidence suggests that the uPA system effects migration, adhesion and metastasis in plasmin-independent ways, which activate various intracellular signaling molecules such as

the serine kinase Raf, the tyrosine kinase Src and MEK/ERK.^{28,29,41} Consistently, our results showed that the phosphorylation levels of MEK1/2, ERK1/2, Elk1 were decreased in *SERPINA11*-expressing cells, indicating that *SERPINA11* metastasis-suppression function was executed through accelerating uPA degradation to impair the downstream MEK/ERK signaling pathway.

HBV is one of the most prominent risk factors for HCC genesis and development. Our study showed that the low expression of *SERPINA11* was significantly correlated with recurrence and metastasis in HBsAg positive HCCs, but not in HBsAg negative HCCs. Interestingly, Hepatitis B spliced protein (HBSP), a protein involved in HBV persistence and pathogenesis, was found to interact with cathepsin

B (CTSB) to enhance the migration and invasion of hepatoma cells via activation of MMP-9 and uPA.⁴² Thus, we speculated that SERPINA11 might have more important metastasis-suppression role in HBsAg positive HCCs.

Conclusions

Collectively, our findings reveal that *SERPINA11* is a novel tumor suppressor gene, which inhibits tumor metastasis by accelerating the degradation of uPA and thereby hindering MEK/ERK activity in HCCs. Further characterization of SERPINA11 may lead to identify a biomarker and intervention point for new therapeutic strategies to patients with HCCs.

Abbreviations

SERPINA11, serpin family A member 11; HCC, hepatic cell carcinoma; RNA-Seq, RNA sequencing; RCL, reactive center loop; ECM, extracellular matrix; qRT-PCR, quantitative real-time polymerase chain reaction; GAPDH, glyceraldehyde 3-phosphate dehydrogenase; shRNA, short hairpin RNAs; Scr, scramble shRNA; IHC, immunohistochemistry; CHX, Cycloheximide; RNAi, RNA interference; uPA, urokinase-type plasminogen activator; H&E, hematoxylin and eosin.

Data Sharing Statement

The data described in this manuscript are contained in published articles or available from the corresponding author upon reasonable request.

Ethics Statement

This study was approved by the Institute Research Ethics Committee at Sun Yat-sen University Cancer Center with written informed consent obtained from all patients. The animal study was approved by the Committee of the Use of Live Animals at Sun Yat-sen University Cancer Center.

Consent for Publication

Not applicable.

Funding

This work was supported by National Natural Science Foundation of China (81802335, 81872007, 81772554); Natural Science Foundation of Guangdong Province (2018A030310175, 2018A030313034, 2021A1515010589); Young Doctoral Plan of Guangzhou Medical University (2016C42); Young Doctoral Plan of Guangdong Health Commission (B2018059); General Guidance Plan of

Guangzhou Health commission (20181A010062); Young Talent Teachers Plan of Sun Yat-sen University (15ykpy33); National Basic Research Program of China (2012CB967001); China National Key Sci-Tech Special Project of Infectious Diseases (2018ZX10723204-006-005); Shenzhen Peacock team Project (KQDT2015033117210153).

Disclosure

The authors declare no potential conflicts of interest.

References

1. El-Serag HB. Hepatocellular carcinoma. *N Engl J Med.* 2011;365:1118–1127. doi:10.1056/NEJMr1001683
2. Parkin DM, Bray F, Ferlay J, et al. Global cancer statistics, 2002. *CA Cancer J Clin.* 2005;55:74–108. doi:10.3322/canjclin.55.2.74
3. Thorgeirsson SS, Grisham JW. Molecular pathogenesis of human hepatocellular carcinoma. *Nat Genet.* 2002;31:339–346. doi:10.1038/ng0802-339
4. Santoni-Rugiu E, Jensen MR, Thorgeirsson SS. Disruption of the pRb/E2F pathway and inhibition of apoptosis are major oncogenic events in liver constitutively expressing c-myc and transforming growth factor alpha. *Cancer Res.* 1998;58:123–134.
5. Morozova O, Marra MA. Applications of next-generation sequencing technologies in functional genomics. *Genomics.* 2008;92:255–264. doi:10.1016/j.ygeno.2008.07.001
6. Wang Z, Gerstein M, Snyder M. RNA-Seq: a revolutionary tool for transcriptomics. *Nat Rev Genet.* 2009;10:57–63. doi:10.1038/nrg2484
7. Heit C, Jackson BC, McAndrews M, et al. Update of the human and mouse SERPIN gene superfamily. *Hum Genomics.* 2013;7:22. doi:10.1186/1479-7364-7-22
8. Law RH, Zhang Q, McGowan S, et al. An overview of the serpin superfamily. *Genome Biol.* 2006;7:216. doi:10.1186/gb-2006-7-5-216
9. Silverman GA, Bird PI, Carrell RW, et al. The serpins are an expanding superfamily of structurally similar but functionally diverse proteins. *Evolution, Mechanism of Inhibition, Novel Functions, and a Revised Nomenclature. J Biol Chem.* 2001;276:33293–33296.
10. Potempa J, Korzus E, Travis J. The serpin superfamily of proteinase inhibitors: structure, function, and regulation. *J Biol Chem.* 1994;269:15957–15960. doi:10.1016/S0021-9258(17)33954-6
11. Nagata K. Hsp47: a collagen-specific molecular chaperone. *Trends Biochem Sci.* 1996;21:22–26. doi:10.1016/S0968-0004(06)80023-X
12. Zou Z, Anisowicz A, Hendrix MJ, et al. Maspin, a serpin with tumor-suppressing activity in human mammary epithelial cells. *Science.* 1994;263:526–529. doi:10.1126/science.8290962
13. Huntington JA, Read RJ, Carrell RW. Structure of a serpin-protease complex shows inhibition by deformation. *Nature.* 2000;407:923–926. doi:10.1038/35038119
14. Carrell RW, Aulak KS, Owen MC. The molecular pathology of the serpins. *Mol Biol Med.* 1989;6:35–42.
15. Andreasen PA, Georg B, Lund LR, et al. Plasminogen activator inhibitors: hormonally regulated serpins. *Mol Cell Endocrinol.* 1990;68:1–19. doi:10.1016/0303-7207(90)90164-4
16. Andreasen PA, Kjoller L, Christensen L, et al. The urokinase-type plasminogen activator system in cancer metastasis: a review. *Int J Cancer.* 1997;72:1–22.
17. Andreasen PA, Egelund R, Petersen HH. The plasminogen activation system in tumor growth, invasion, and metastasis. *Cell Mol Life Sci.* 2000;57:25–40. doi:10.1007/s000180050497

18. Lin KT, Shann YJ, Chau GY, et al. Identification of latent biomarkers in hepatocellular carcinoma by ultra-deep whole-transcriptome sequencing. *Oncogene*. 2014;33:4786–4794. doi:10.1038/onc.2013.424
19. Chen L, Li Y, Lin CH, et al. Recoding RNA editing of AZIN1 predisposes to hepatocellular carcinoma. *Nat Med*. 2013;19:209–216. doi:10.1038/nm.3043
20. Fortenberry Y. The role of serpins in tumor cell migration. *Biol Chem*. 2015;396:205–213. doi:10.1515/hsz-2014-0254
21. Van De Craen B, Declerck PJ, Gils A. The biochemistry, physiology and pathological roles of PAI-1 and the requirements for PAI-1 inhibition in vivo. *Thromb Res*. 2012;130:576–585. doi:10.1016/j.thromres.2012.06.023
22. Al-Ejeh F, Croucher D, Ranson M. Kinetic analysis of plasminogen activator inhibitor type-2: urokinase complex formation and subsequent internalisation by carcinoma cell lines. *Exp Cell Res*. 2004;297:259–271. doi:10.1016/j.yexcr.2004.03.030
23. Suzuki K. The multi-functional serpin, protein C inhibitor: beyond thrombosis and hemostasis. *J Thromb Haemost*. 2008;6:2017–2026. doi:10.1111/j.1538-7836.2008.03181.x
24. Yepes M, Sandkvist M, Wong MK, et al. Neuroserpin reduces cerebral infarct volume and protects neurons from ischemia-induced apoptosis. *Blood*. 2000;96:569–576. doi:10.1182/blood.V96.2.569
25. Cubellis MV, Wun TC, Blasi F. Receptor-mediated internalization and degradation of urokinase is caused by its specific inhibitor PAI-1. *EMBO J*. 1990;9:1079–1085. doi:10.1002/j.1460-2075.1990.tb08213.x
26. Dano K, Andreasen PA, Grondahl-Hansen J, et al. Plasminogen activators, tissue degradation, and cancer. *Adv Cancer Res*. 1985;44:139–266.
27. Tang L, Han X. The urokinase plasminogen activator system in breast cancer invasion and metastasis. *Biomed Pharmacother*. 2013;67:179–182. doi:10.1016/j.biopha.2012.10.003
28. Luo J, Sun X, Gao F, et al. Effects of ulinastatin and docetaxel on breast cancer invasion and expression of uPA, uPAR and ERK. *J Exp Clin Cancer Res*. 2011;30:71. doi:10.1186/1756-9966-30-71
29. Chandrasekar N, Mohanam S, Gujrati M, et al. Downregulation of uPA inhibits migration and PI3k/Akt signaling in glioblastoma cells. *Oncogene*. 2003;22(3):392–400. doi:10.1038/sj.onc.1206164
30. Nguyen DH, Webb DJ, Catling AD, et al. Urokinase-type plasminogen activator stimulates the Ras/Extracellular signal-regulated kinase (ERK) signaling pathway and MCF-7 cell migration by a mechanism that requires focal adhesion kinase, Src, and Shc. Rapid dissociation of GRB2/Sps-Shc complex is associated with the transient phosphorylation of ERK in urokinase-treated cells. *J Biol Chem*. 2000;275:19382–19388. doi:10.1074/jbc.M909575199
31. UniProt Consortium T. UniProt: the universal protein knowledgebase. *Nucleic Acids Res*. 2018;46:2699. doi:10.1093/nar/gky092
32. Holst-Hansen C, Johannessen B, Hoyer-Hansen G, et al. Urokinase-type plasminogen activation in three human breast cancer cell lines correlates with their in vitro invasiveness. *Clin Exp Metastasis*. 1996;14:297–307. doi:10.1007/BF00053903
33. Croucher DR, Saunders DN, Lobov S, et al. Revisiting the biological roles of PAI2 (SERPINB2) in cancer. *Nat Rev Cancer*. 2008;8:535–545. doi:10.1038/nrc2400
34. Casslen B, Nordengren J, Gustavsson B, et al. Progesterone stimulates degradation of urokinase plasminogen activator (u-PA) in endometrial stromal cells by increasing its inhibitor and surface expression of the u-PA receptor. *J Clin Endocrinol Metab*. 1995;80(9):2776–2784. doi:10.1210/jcem.80.9.7673423
35. Stillfried GE, Saunders DN, Ranson M. Plasminogen binding and activation at the breast cancer cell surface: the integral role of urokinase activity. *Breast Cancer Res*. 2007;9:R14. doi:10.1186/bcr1647
36. De Cremoux P, Grandin L, Dieras V, et al. Urokinase-type plasminogen activator and plasminogen-activator-inhibitor type 1 predict metastases in good prognosis breast cancer patients. *Anticancer Res*. 2009;29(5):1475–1482.
37. De Petro G, Taviani D, Copeta A, et al. Expression of urokinase-type plasminogen activator (u-PA), u-PA receptor, and tissue-type PA messenger RNAs in human hepatocellular carcinoma. *Cancer Res*. 1998;58:2234–2239.
38. Zhou L, Hayashi Y, Itoh T, et al. Expression of urokinase-type plasminogen activator, urokinase-type plasminogen activator receptor, and plasminogen activator inhibitor-1 and -2 in hepatocellular carcinoma. *Pathol Int*. 2000;50:392–397. doi:10.1046/j.1440-1827.2000.01059.x
39. Chan CF, Yau TO, Jin DY, et al. Evaluation of nuclear factor-kappaB, urokinase-type plasminogen activator, and HBx and their clinicopathological significance in hepatocellular carcinoma. *Clin Cancer Res*. 2004;10:4140–4149. doi:10.1158/1078-0432.CCR-03-0574
40. Matrisian LM. The matrix-degrading metalloproteinases. *Bioessays*. 1992;14:455–463. doi:10.1002/bies.950140705
41. Blasi F, Sidenius N. The urokinase receptor: focused cell surface proteolysis, cell adhesion and signaling. *FEBS Lett*. 2010;584:1923–1930. doi:10.1016/j.febslet.2009.12.039
42. Chen WN, Chen JY, Jiao BY, et al. Interaction of the hepatitis B spliced protein with cathepsin B promotes hepatoma cell migration and invasion. *J Virol*. 2012;86:13533–13541. doi:10.1128/JVI.02095-12

The Journal of Hepatocellular Carcinoma is an international, peer-reviewed, open access journal that offers a platform for the dissemination and study of clinical, translational and basic research findings in this rapidly developing field. Development in areas including, but not limited to, epidemiology, vaccination, hepatitis therapy, pathology

and molecular tumor classification and prognostication are all considered for publication. The manuscript management system is completely online and includes a very quick and fair peer-review system, which is all easy to use. Visit <http://www.dovepress.com/testimonials.php> to read real quotes from published authors.