

An EST-SSR Linkage Map of *Raphanus sativus* and Comparative Genomics of the Brassicaceae[†]

KENTA Shirasawa^{1,*}, MAKI Oyama², HIDEKI Hirakawa¹, SHUSEI Sato¹, SATOSHI Tabata¹, TAKASHI Fujioka², CHIAKI Kimizuka-Takagi³, SHIGEMI Sasamoto¹, AKIKO Watanabe¹, MIDORI Kato¹, YOSHIE Kishida¹, MITSUYO Kohara¹, CHIKA Takahashi¹, HISANO Tsuruoka¹, TSUYUKO Wada¹, TAKAKO Sakai², and SACHIKO Isobe¹

Kazusa DNA Research Institute, 2-6-7 Kazusa-Kamatari, Kisarazu, Chiba 292-0818, Japan¹; Mikado Kyowa Seed Co., Ltd., 2789-1 Shimo-Otaki, Otaki, Isumi, Chiba 298-0202, Japan² and Kimizuka Vegetable Farm, 1023 Funako, Otaki, Isumi, Chiba 297-0204, Japan³

*To whom correspondence should be addressed. Tel. +81 438-52-3935. Fax. +81 438-52-3934.
Email: shirasaw@kazusa.or.jp

Edited by Katsumi Isono
(Received 5 April 2011; accepted 9 May 2011)

Abstract

***Raphanus sativus* ($2n = 2x = 18$) is a widely cultivated member of the family Brassicaceae, for which genomic resources are available only to a limited extent in comparison to many other members of the family. To promote more genetic and genomic studies and to enhance breeding programmes of *R. sativus*, we have prepared genetic resources such as complementary DNA libraries, expressed sequence tags (ESTs), simple sequence repeat (SSR) markers and a genetic linkage map. A total of 26 606 ESTs have been collected from seedlings, roots, leaves, and flowers, and clustered into 10 381 unigenes. Similarities were observed between the expression patterns of transcripts from *R. sativus* and those from representative members of the genera *Arabidopsis* and *Brassica*, indicating their functional relatedness. The EST sequence data were used to design 3800 SSR markers and consequently 630 polymorphic SSR loci and 213 reported marker loci have been mapped onto nine linkage groups, covering 1129.2 cM with an average distance of 1.3 cM between loci. Comparison of the mapped EST-SSR marker positions in *R. sativus* with the genome sequence of *A. thaliana* indicated that the Brassicaceae members have evolved from a common ancestor. It appears that genomic fragments corresponding to those of *A. thaliana* have been doubled and tripled in *R. sativus*. The genetic map developed here is expected to provide a standard map for the genetics, genomics, and molecular breeding of *R. sativus* as well as of related species. The resources are available at <http://marker.kazusa.or.jp/Daikon>.**

Key words: comparative map; expressed sequence tag (EST); genetic linkage map; *Raphanus sativus*; simple sequence repeat (SSR)

1. Introduction

DNA markers are essential tools for plant genetics. In early studies, restriction fragment length polymorphism (RFLP), amplified fragment length polymorphism (AFLP) and random amplified polymorphic DNA (RAPD) techniques were widely used

since no sequence information was required for their development. Single nucleotide polymorphism (SNP) is the most abundant source of genomic variation, and genetic studies using large-scale genotyping of SNPs have been performed with several plant species.^{1–5} However, SNP markers only detect two alleles and biases in allelic frequency reflect the targeted population structure,⁵ making it difficult to develop SNP markers that widely function across species. Although no similar high-throughput genotyping system has been developed for simple

[†] Information for the EST-SSR markers and the genetic map is available at <http://marker.kazusa.or.jp/Daikon>.

sequence repeats (SSR), these markers have several advantages over SNPs, including multi-allelic detection, high-transferability across species and flexibility with various laboratory systems.⁶ SSR markers can be classified into two categories: genomic SSRs and expressed sequence tag (EST)-SSRs, which are designed from intergenic and intragenic sequences, respectively. Even though the polymorphic ratio of EST-SSR markers is sometimes lower than that of genomic SSRs, EST-SSRs can be expected to have greater transferability between species than genomic SSRs, since genic regions are more likely to be conserved among related species/genera.⁵

Comparative genomics has had a significant impact on the fields of plant genetics and genomics. It has provided information on genomic evolution through the identification of chromosomal rearrangements and duplication/deletion events, as well as enabling large amounts of knowledge gained by studying model plants to be transferred to crops. The dicot species *Arabidopsis thaliana* ($2n = 10$) is a member of the family Brassicaceae. *A. thaliana* is the most studied model plant and extensive genomic resources have been developed in this species, including genomic sequences, EST information, mutant lines, DNA libraries and molecular markers, all of which are available to the research community (<http://www.arabidopsis.org>).⁷ Similarly, the *Brassica* belong to the Brassicaceae and many *Brassica* species are cultivated as vegetable and oil crops. Commercially important *Brassica* species include broccoli, cabbage, cauliflower, Chinese cabbage, turnip, oilseed, and black mustard. Therefore, it is not surprising that the genomes of many members of the *Brassica* have been well studied. In particular, karyotype analysis has shown that *B. rapa* ($2n = 20$), *B. nigra* ($2n = 16$), and *B. oleracea* ($2n = 18$) are diploids with AA, BB, and CC genomes, respectively. In contrast, *B. juncea* (AABB: $2n = 36$), *B. carinata* (BBCC: $2n = 34$) and *B. napus* (AACC: $2n = 38$) are amphidiploids, which were derived from combinations of two of the diploids.⁸ Comparative genomics between *A. thaliana* and different members of the *Brassica* have revealed synteny in which regions of the *A. thaliana* genome have doubled or tripled.^{9–11} In *B. rapa*, comparative studies have enabled map-based or candidate-gene cloning strategies to identify several quantitative trait loci (QTLs) and genes for agronomically important traits, such as flowering time, leaf morphology, and disease resistance.^{12,13}

Raphanus sativus ($2n = 2x = 18$) is also a member of the Brassicaceae and it is used around the world as a vegetable crop, i.e. the radish or Japanese daikon. In particular, *R. sativus* is a common crop in East Asia and is the second most produced vegetable in Japan (www.e-stat.go.jp). The genus *Raphanus* is originated

from coastal regions along the Mediterranean and Black Seas and it is classified into two sections that comprise six species.¹⁴ *R. sativus* was thought to have derived by hybridization between *R. maritimus* and *R. landra*, exhibiting an RR genome of 468–662 Mb.^{14–16} *Raphanus sativus* genomic research has not progressed as far as for members of the *Brassica*, possibly because the genus *Raphanus* is less speciose and less economically important. Several genetic maps of *R. sativus* have been constructed using RFLP, AFLP, and RAPD markers, and these have been applied to QTL identification of disease and pest resistance, the shape and pigmentation of roots, and the flowering time.^{14,17–19} However, few studies have reported comparative genomics between *R. sativus* and *A. thaliana* because the *R. sativus* maps have no sequence-tagged markers. Kamei *et al.*¹⁸ used genomic SSR markers for *B. rapa* to perform a genetic analysis of *R. sativus*, but found low transferability of markers between the two species. Therefore, further advances in the genetic and genomic analyses of *R. sativus* will require the development of genic sequence-based markers.

In the present study, genomic resources were developed for *R. sativus*. These resources include cDNA libraries, EST sequences, EST-SSR markers, and a genetic map, all of which have great advantages to subsequent genomic studies in comparison with genomic SSR markers. Comparison with the *A. thaliana* genome indicated that the two genomes differentiated from a common ancestor and that *A. thaliana* genomic fragments had been doubled and tripled in the *R. sativus* genome. This comparative map could be used for the identification of candidate genes in QTLs from *R. sativus*.

2. Materials and methods

2.1. Plant materials

Previously, an F₂ mapping population derived from a cross between two inbred lines, 'GSK3-1' and 'HA2', was used for construction of a genetic map of *R. sativus*.¹⁴ 'GSK3-1' is a selfed progeny from a leading Japanese variety of *R. sativus* known as Utsugi-Gensuke and 'HA2' is a Tokinashi type that exhibits late bolting. In the present study, F_{8–10} progeny ($n = 155$) generated by single seed descent were used as recombinant inbred lines for linkage analysis. Genomic DNA from each line was extracted using the DNeasy Plant Mini kit (Qiagen, Germany).

2.2. Development of EST-derived SSR markers

Plant RNA Purification Reagent (Invitrogen, USA) was used to extract total RNA from 5 g samples of seedlings, roots, leaves, and flowers of *R. sativus* 'GSK3-1'. cDNA libraries were constructed for each organ and then

sequencing analysis and data processing were performed as described previously.²⁰ High-quality reads that comprised >50 bp of contiguous sequence were submitted to the DDBJ/EMBL/GenBank databases with the accession numbers FY428055 to FY454660. BLASTN was used to perform similarity searches between non-redundant *R. sativus* ESTs that clustered using the PHRAD program and the UniGene data sets for *R. sativus*, *A. thaliana*, *B. napus*, *B. oleracea*, *B. rapa*, *Lotus japonicas*, and *Oryza sativa* (<http://www.ncbi.nlm.nih.gov/unigene>). BLASTX searches against amino acid sequences in the KOG set (<http://www.ncbi.nlm.nih.gov/COG>) enabled EST contigs to be classified into KOG categories.²¹ These sequence similarities were judged to be significant when the *E*-value was less than $1e-10$.

Microsatellites or SSRs of ≥ 15 nucleotides in length were identified. All possible combinations of di- (NN), tri- (NNN), and tetra-nucleotide (NNNN) repeats were represented. Primer pairs were designed against the flanking sequences of each SSR, as described previously.²²

PCR reactions were performed using 0.5 ng genomic DNA in each 5 μ l reaction. In addition to template, PCR reaction mixes contained 1 \times PCR buffer (BIOLINE, UK), 3 mM MgCl₂, 0.04 U BIOTAQ™ DNA polymerase (BIOLINE, UK), 0.2 mM dNTPs, and 0.8 μ M of each primer. The thermal cycling conditions were as follows: 1 min denaturation at 94°C; 35 cycles of 30 s denaturation at 94°C, 30 s annealing at 60°C and 1 min extension at 72°C; and a final 3 min extension at 72°C. The PCR products were separated by 10% polyacrylamide gel electrophoresis in TBE buffer, according to the standard protocol, or with a Type 3730 DNA fragment analyzer (Applied Biosystems, USA). In the latter case, the data were analysed using GeneMapper software (Applied Biosystems, USA).

2.3. Genotyping and map construction

Linkage analysis was performed with genotypic data derived using the EST-SSR markers developed in this study, as well as segregation data generated from 223 published RAPD, RFLP, and trait marker loci,^{14,23,24} using JoinMap® software version 4.²⁵ The marker loci were classified roughly into nine linkage groups using the JoinMap® grouping module and LOD scores of 4.0–10.0. The mapped positions of the RAPD, RFLP, and trait marker loci were used as a frame for linkage analysis. Marker order and genetic distance were calculated using a regression mapping algorithm and the following parameters: Haldane's mapping function, recombination frequency ≤ 0.35 and LOD score ≥ 2.0 .

2.4. Synteny analysis

R. sativus amino acid sequences were deduced from mapped ESTs. BLASTX was used to compare predicted *R. sativus* sequences against the TAIR9-predicted protein database (<http://www.arabidopsis.org>) with a threshold *E*-value of $1e-50$. Because Kim *et al.*¹¹ reported a *B. rapa* genetic map constructed with EST-based markers, a comparative map between *A. thaliana* and *B. rapa* was also constructed by locating nucleotide sequences of marker loci from *B. rapa* on the *A. thaliana* genome.

3. Results

3.1. Features of *R. sativus* ESTs

A total of 32 256 cDNA clones, including 9216 clones from a seedling library, 7680 clones from a root library, 7680 clones from a leaf library, and 7680 clones from a flower library, were sequenced from the 5' end. A total of 26 606 sequences (8458, 6320, 6721, and 5107 from seedling, root, leaf, and flower libraries, respectively) consisting of 19 391 246 qualified bases were obtained, and the average EST length was 729 bp.

The PHRAD program was used to cluster EST sequences in order to identify the number of independent EST species. These analyses indicated 10 381 potential non-redundant EST sequences, which included 6625 contigs and 3756 singletons with an average GC content of 45.6%. Non-redundant EST sequences were compared against the Unigene data of *R. sativus*, *A. thaliana*, *B. napus*, *B. oleracea*, *B. rapa*, *L. japonicas*, and *O. sativa* (<http://www.ncbi.nlm.nih.gov/unigene>). These comparisons indicated 9758 non-redundant ESTs with significant similarity (*E*-value $< 1e-10$) to registered sequences of the seven species and the remaining 623 non-redundant ESTs were unique to the data from this study.

To investigate the functional classification of *R. sativus* ESTs, BLASTX was used to compare non-redundant EST sequences with eukaryotic clusters of orthologous groups (KOGs) and these ESTs were then classified into KOG categories.²¹ Among the 10 381 non-redundant *R. sativus* EST sequences, 6265 showed similarities to KOG sequences that have functional classification, and their distribution is similar to those of the seven species (Fig. 1).

3.2. SSR motifs in *R. sativus* ESTs

In silico data mining of the 26 606 sequences yielded 3800 SSR markers, which were designated as RSS (*Raphanus sativus* EST-derived SSR) markers (Supplementary Table S1). Out of the 3800 SSR markers, 3733 markers (98.2%) had motif lengths ranging from 20 to 35 bases (Supplementary Table S1).

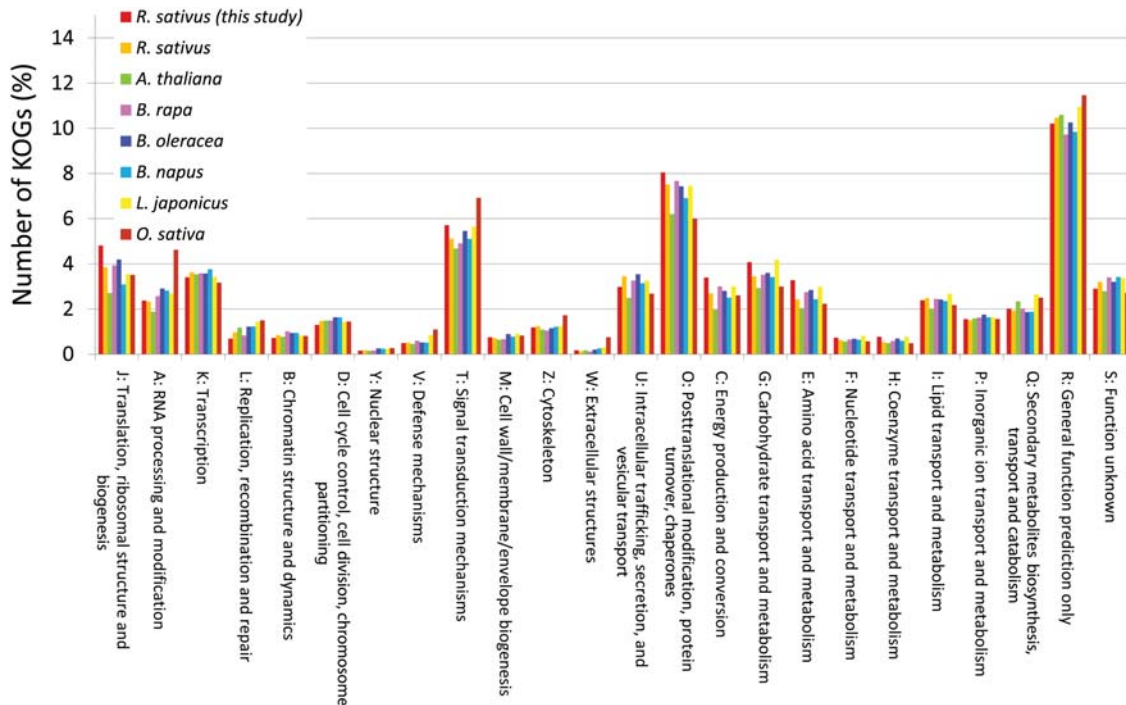


Figure 1. Functional classification of non-redundant *R. sativus* EST sequences and unigenes of the seven plant species into KOG categories. BLASTX was used to compare non-redundant EST sequences with the KOG sequence set. EST sequences were then classified into the KOG categories with the most similar sequences.

The RSS marker motifs contained 3094 (81.4%), 381 (10.0%), and 325 (8.6%) tri-, di-, and tetra-nucleotide repeats, respectively (Table 1). The most abundant trinucleotide repeats were poly (AAG)_n (21.4%), poly (GGA)_n (14.2%), and poly (ATC)_n (10.1%). Four types of dinucleotide repeats were observed and the poly (AG)_n motifs were the most abundant (6.8%). The tetranucleotide repeats poly (AAAG)_n (2.7%), poly (AAAC)_n (2.1%) and poly (AAAT)_n (1.4%) were more frequently observed than the other motifs. Among the 3800 SSR motifs, 1604 and 242 were located on coding and untranscribed regions, respectively (Table 1, Supplementary Table S1). SSRs on coding regions consisted of 30 di-, 1533 tri-, and 41 tetra-nucleotide repeat motifs, while those on untranscribed regions included 96 di-, 104 tri-, and 42 tetra-nucleotide repeat motifs. The other 1954 SSRs were not assigned to the regions because the length of each EST was not enough to predict open reading frames.

3.3. Linkage analysis and map construction

All 3800 SSR markers were used for polymorphic analysis of parental lines from the mapping population and 642 (16.9%) SSR markers were selected (Table 1, Supplementary Table S1). These markers identified 18 double polymorphic loci and one triple polymorphic locus and, consequently, 662

polymorphic loci were generated from the 642 SSR markers. Among the 662 SSR loci, 545 and 117 identified co-dominant and dominant loci, respectively. Null alleles were observed in 98 and 19 of the 117 dominant markers from 'HA2' and 'GSK3-1', respectively. The polymorphic ratios of the di-, tri-, and tetra-nucleotide repeats were 19.9, 16.3, and 19.1%, respectively, and the polymorphic ratio of SSRs on UTRs (20.2%) were higher than that on coding regions (16.8%) (Table 1).

Segregation data were generated from the 662 SSR and 223 RAPD, RFLP, and trait marker loci in the mapping population. Following linkage analysis, 843 loci (630 SSR and 213 RAPD, RFLP and trait loci) were mapped into nine linkage groups, while the remaining 42 loci (32 SSR and 10 RAPD, RFLP, and trait loci) were excluded from the analysis. Linkage groups were named according to the previous report.¹⁴ The linkage groups covered 1129.2 cM (Table 2, Fig. 2, and Supplementary Table S2) and the average distance between neighbouring loci was 1.3 cM, with distances ranging from 1.0 cM in linkage group 3 (LG3) to 2.0 cM in LG6. Segregation distortion was observed for 8.9% of the mapped marker loci (Table 2 and Supplementary Table S2). The segregation distortion ratios varied among linkage groups; LG5 showed distortions with 3.7% of the mapped loci, while LG2 showed distortions for 20.2% of the loci.

Table 1. Number of SSR motifs in the RSS markers

Motif	Designed SSR markers								Polymorphic SSR markers							
	Total	% ^a	Coding region	% ^a	UTR	% ^a	Unassigned region ^b	% ^a	Total	Polymorphic ratio (%) ^c	Coding region	Polymorphic ratio (%) ^c	UTR	Polymorphic ratio (%) ^c	Unassigned region ^b	Polymorphic ratio (%) ^c
Dinucleotide																
AC	60	1.6	3	0.1	7	0.2	50	1.3	14	23.3	2	66.7	1	14.3	11	22.0
AG	257	6.8	25	0.7	83	2.2	149	3.9	48	18.7	4	16.0	22	26.5	22	14.8
AT	63	1.7	2	0.1	6	0.2	55	1.4	14	22.2	1	50.0	1	16.7	12	21.8
GC	1	0.0	0	0.0	0	0.0	1	0.0	0	0.0	0	—	0	—	0	0.0
Total	381	10.0	30	0.8	96	2.5	255	6.7	76	19.9	7	23.3	24	25.0	45	17.6
Trinucleotide																
AAC	305	8.0	140	3.7	9	0.2	156	4.1	53	17.4	27	19.3	1	11.1	25	16.0
AAG	815	21.4	374	9.8	49	1.3	392	10.3	119	14.6	55	14.7	7	14.3	57	14.5
AAT	103	2.7	13	0.3	10	0.3	80	2.1	20	19.4	2	15.4	2	20.0	16	20.0
ACG	158	4.2	74	1.9	6	0.2	78	2.1	23	14.6	9	12.2	1	16.7	13	16.7
ACT	65	1.7	22	0.6	0	0.0	43	1.1	11	16.9	3	13.6	0	—	8	18.6
AGC	293	7.7	180	4.7	1	0.0	112	2.9	58	19.8	34	18.9	0	0.0	24	21.4
ATC	385	10.1	192	5.1	14	0.4	179	4.7	69	17.9	37	19.3	4	28.6	28	15.6
GGA	541	14.2	310	8.2	8	0.2	223	5.9	89	16.5	53	17.1	1	12.5	35	15.7
GGC	154	4.1	95	2.5	1	0.0	58	1.5	22	14.3	17	17.9	0	0.0	5	8.6
GGT	275	7.2	133	3.5	6	0.2	136	3.6	40	14.5	18	13.5	1	16.7	21	15.4
Total	3094	81.4	1533	40.3	104	2.7	1457	38.3	504	16.3	255	16.6	17	16.3	232	15.9
Tetranucleotide																
AAAC	81	2.1	3	0.1	11	0.3	67	1.8	17	21.0	1	33.3	2	18.2	14	20.9
AAAG	101	2.7	13	0.3	15	0.4	73	1.9	14	13.9	2	15.4	2	13.3	10	13.7
AAAT	53	1.4	3	0.1	4	0.1	46	1.2	14	26.4	1	33.3	1	25.0	12	26.1
AACG	1	0.0	0	0.0	0	0.0	1	0.0	0	0.0	0	—	0	—	0	0.0
AAGC	11	0.3	3	0.1	1	0.0	7	0.2	2	18.2	1	33.3	0	0.0	1	14.3
AATC	24	0.6	4	0.1	4	0.1	16	0.4	6	25.0	0	0.0	3	75.0	3	18.8
AATG	9	0.2	1	0.0	1	0.0	7	0.2	1	11.1	0	0.0	0	0.0	1	14.3
AATT	7	0.2	0	0.0	1	0.0	6	0.2	1	14.3	0	—	0	0.0	1	16.7
AGGC	1	0.0	1	0.0	0	0.0	0	0.0	0	0.0	0	0.0	0	—	0	—
GACG	2	0.1	1	0.0	1	0.0	0	0.0	0	0.0	0	0.0	0	0.0	0	—
GAGC	3	0.1	1	0.0	1	0.0	1	0.0	1	33.3	0	0.0	0	0.0	1	100.0
GATC	2	0.1	0	0.0	1	0.0	1	0.0	0	0.0	0	—	0	0.0	0	0.0
GGAC	1	0.0	0	0.0	0	0.0	1	0.0	0	0.0	0	—	0	—	0	0.0

Continued

Table 1. Continued

Motif	Designed SSR markers				Polymorphic SSR markers											
	Total	% ^a	Coding region	% ^a	UTR	% ^a	Unassigned region ^b	% ^a	Total	Polymorphic ratio (%) ^c	Coding region	Polymorphic ratio (%) ^c	UTR	Polymorphic ratio (%) ^c	Unassigned region ^b	Polymorphic ratio (%) ^c
GGAT	8	0.2	2	0.1	0	0.0	6	0.2	3	37.5	1	50.0	0	—	2	33.3
GGCT	1	0.0	0	0.0	0	0.0	1	0.0	0	0.0	0	—	0	—	0	0.0
GGGA	18	0.5	8	0.2	2	0.1	8	0.2	3	16.7	2	25.0	0	0.0	1	12.5
GGGT	2	0.1	1	0.0	0	0.0	1	0.0	0	0.0	0	0.0	0	—	0	0.0
Total	325	8.6	41	1.1	42	1.1	242	6.4	62	19.1	8	19.5	8	19.0	46	19.0
Total	3800	100.0	1604	42.2	242	6.4	1954	51.4	642	16.9	270	16.8	49	20.2	323	16.5

^aPercentage to a total of 3800 SSR markers.

^bThe position of SSRs was not assigned because of the length of each EST was not enough to predict open reading frames.

^cPercentage to the designed SSR markers.

Table 2. Length, number of mapped loci, and segregation distortion of the genetic map

Linkage group	Distance (cM)	The number of marker loci			cM/marker loci	Segregation distortion ratio (%)
		Total	EST-SSR	RAPD		
1	120.8	82	56	26	1.5	7.3
2	149.9	109	88	21	1.4	20.2
3	147.9	155	124	31	1.0	7.7
4	148.0	114	82	32	1.3	4.4
5	147.5	107	79	28	1.4	3.7
6	153.2	77	50	27	2.0	5.2
7	100.3	84	61	23	1.2	10.7
8	85.4	65	49	16	1.3	7.7
9	76.2	50	41	9	1.6	16.0
Total	1129.2	843	630	213	1.3	8.9

3.4. Genomic comparison of *R. sativus*, *A. thaliana*, and *B. rapa*

BLASTX was used to compare the nucleotide sequences of 630 ESTs mapped into linkage groups with the predicted-protein database of *A. thaliana*. Of the 630 ESTs, 358 showed significant homology ($\leq 1e-50$ *E*-value) to 500 *A. thaliana* genes, and 230, 87, and 22 ESTs mapped onto one, two, and three regions of the *A. thaliana* genome, respectively, while 19 other ESTs mapped onto four or five regions and 273 ESTs showed no significant homology to the *A. thaliana* genome (Supplementary Table S2). To compare the genome structures of *R. sativus* and *A. thaliana*, syntenic regions were deduced when more than three continuous EST loci on *R. sativus* linkage groups aligned to a single portion of the genome of *A. thaliana*. Chromosomal segments of *A. thaliana* were assigned onto the *R. sativus* genetic map (Fig. 2). Approximately 65% (739.1 cM) of the genetic map was covered by 35 *A. thaliana* chromosome segments, which ranged from one segment on LG9 to six segments on LG3 and LG4. The longest segment (84.4 cM) was found on LG2 and it had derived from *A. thaliana* Chr2. The shortest segment (2.1 cM) was detected on LG7 and it arose from Chr1. The average length of a single segment was 21.1 cM.

Conversely, the *R. sativus* genetic map could be assigned to almost the whole *A. thaliana* genome, with the exception of the ribosomal DNA repeat regions on Chr2 and Chr4 (Fig. 3). *R. sativus* linkage groups showed average mapped depths of 2.0 on the *A. thaliana* genome and depths ranged from 1 to 4. Two *R. sativus* linkage groups were redundantly assigned to 48% of the *A. thaliana* genome and the remaining 18, 24, and 4% of the

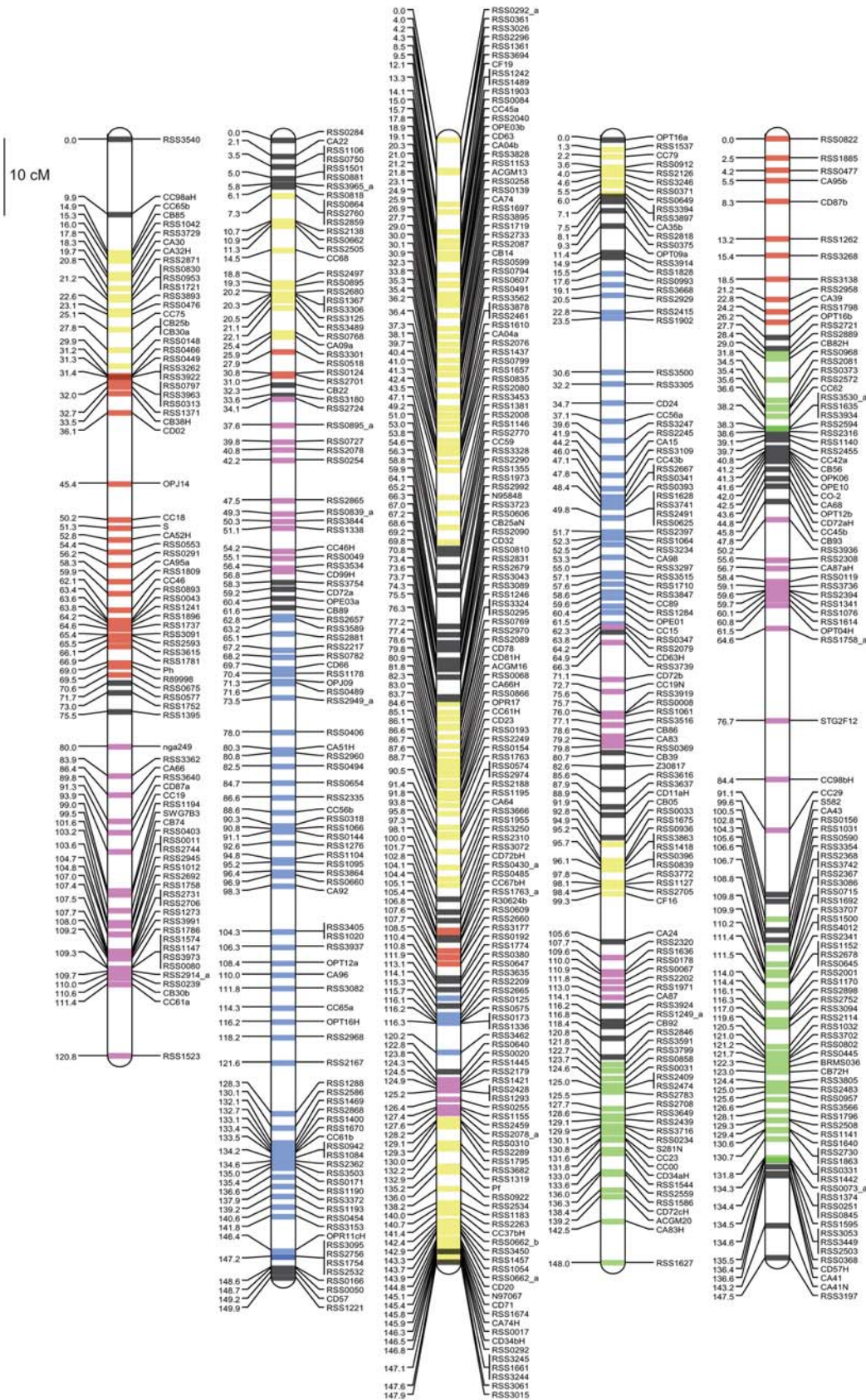


Figure 2. Genetic linkage map of *R. sativus*. The red, blue, yellow, green and pink lines on each linkage group correspond to chromosomes 1, 2, 3, 4 and 5 of *A. thaliana*. Detailed information about the map and markers is shown in Supplementary Table S2 and is also available at <http://marker.kazusa.or.jp/Daikon>.

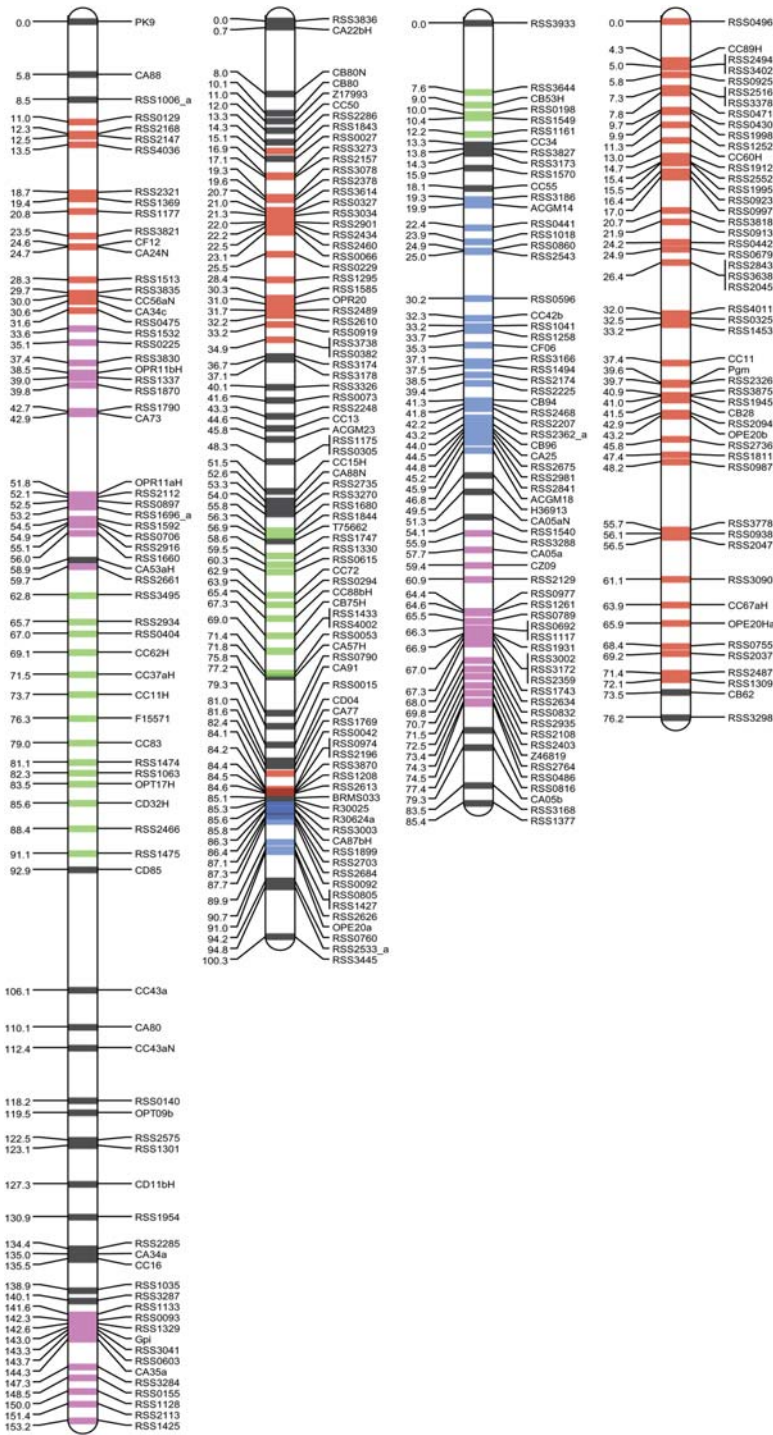


Fig. 2 Continued

A. thaliana genome were covered by single, triple, and quadruple *R. sativus* linkage groups, respectively. *A. thaliana* Chr3 was covered with two *R. sativus* LG3s, each of which was derived from both distal parts of LG3, respectively (Supplementary Table S2). In addition to the *R. sativus* map, a published genetic map of *B. rapa* was also assigned onto the

A. thaliana genome. This analysis confirmed that the *B. rapa* genome contains two or three copies of at least 24 genomic segments from *A. thaliana*, as suggested by a previous report.¹¹ The average mapped depth of *B. rapa* linkage groups on the *A. thaliana* genome was 1.4 and ranged from 1 to 3. Forty-eight per cent of the *A. thaliana* genome

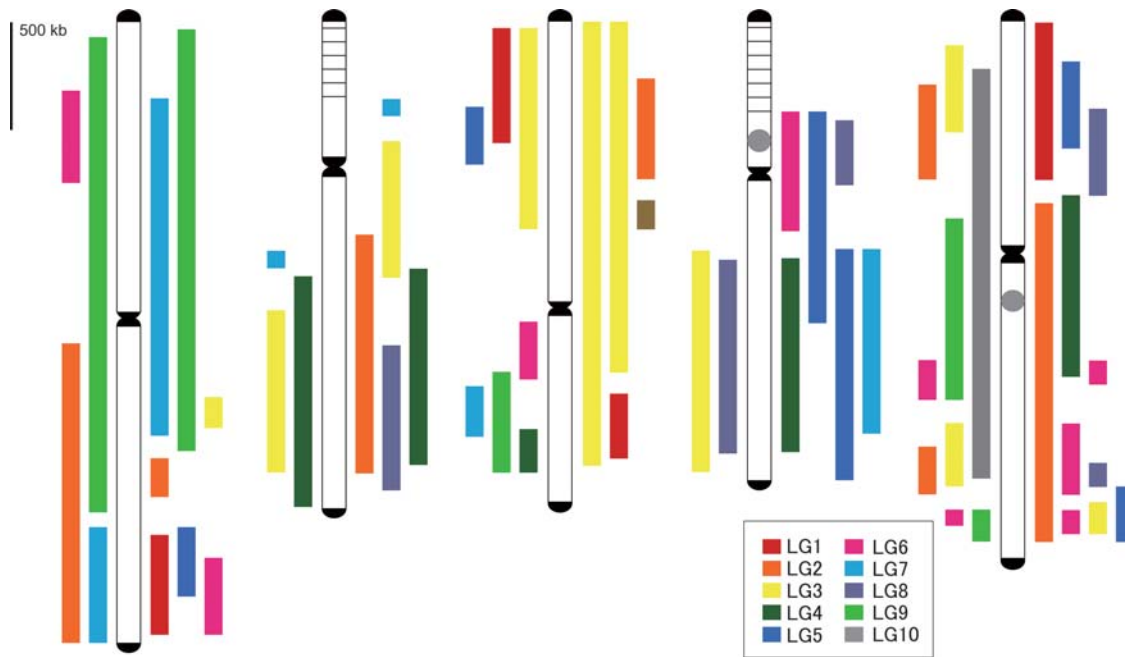


Figure 3. Syntenic map of *A. thaliana* and *R. sativus* or *B. rapa*. *A. thaliana* chromosomes are shown with white bars. Telomeric and centromeric regions are indicated in black. Heterochromatic knobs and rDNA repeat regions are identified by grey circles and horizontal lines, respectively. The colored bars on the right and left sides of the *A. thaliana* chromosomes indicate linkage groups from *R. sativus* and *B. rapa*, respectively.

was covered by two *B. rapa* linkage groups, while 24 and 7% of the genome was covered by single and triple *B. rapa* linkage groups. Large syntenic segments were identified between the three species on the following *A. thaliana* (*At*) chromosomes: *At* Chr1, *B. rapa* (*Br*) LG9, *R. sativus* (*Rs*) LG7, and *Rs* LG9; *At* Chr2, *Br* LG3, *Br* LG4, *Rs* LG2, and LG4; *At* Chr3, *Br* LG3 and *Rs* LG3; *At* Chr4, *Br* LG 3, *Br* LG8, *Rs* LG4, *Rs* LG5, and *Rs* LG7; and *At* Ch5, *Br* LG10, and *Rs* LG2. Scattered syntenic segments were also observed on several genomic regions of *A. thaliana*. The most overlapping and disrupted syntenic region was identified on a distal part of the long arm of *At* Chr5.

4. Discussion

A genetic map of *R. sativus* was constructed using 630 EST-SSR and 213 RAPD, RFLP, and trait marker loci. This map comprised nine linkage groups, which corresponded to the number of chromosomes in haploid *R. sativus* ($n = 9$). The genetic map was calculated to cover 1129.2 cM and the average interval between marker loci was 1.3 cM. To our knowledge, this map comprises the highest number and density of marker loci of all the published *R. sativus* genetic maps.^{14,17–19,26,27} However, the genetic map generated in this study was shorter than the map reported by Budahn *et al.*,¹⁷ which was 1517 cM. That map was constructed using 245 F_2 plants and most of

mapped markers were dominant, i.e. AFLPs and RAPDs. In contrast, the map from this study was developed using 155 RILs, with a large number of co-dominant SSR markers. These differences in length can be accounted for by the differences in size of mapping population, as well as in the number and types of DNA markers.²⁸ Another contributing factor could be differences in the frequency of chromosome recombination caused by environmental factors and genetic diversity of the mapping parents.^{29,30}

EST-SSR markers are often preferable to RFLP, AFLP, and RAPD markers, since EST nucleotide sequences generally show higher levels of similarity across different species, genera, and families than sequences from intergenic regions. Therefore, the primers of EST-SSR markers are often directly applicable to PCR analyses of related species, although the efficiency of transferability depends upon the genetic distance between the species.⁶ Moreover, the multi-allelic nature of SSRs makes them more efficient than SNP markers for polymorphic analysis of diverse accessions. A preliminary experiment showed that *R. sativus* EST-SSR markers could be transferred to a mapping population derived from a cross between a Japanese daikon and a rat-tailed radish. PCR amplified specific DNA fragments in 665 (98%) of 676 tested EST-SSR markers and 291 (43%) markers showed polymorphism between the two lines. The order of mapped markers on this linkage map matched the order on the high-density linkage map from this study (data not shown).

EST-based markers are also valuable for comparisons of genome structure between different plant species. To demonstrate their utility, *R. sativus* and *A. thaliana* were compared using homologies between amino acid sequences predicted from the EST sequences and their locations on the present linkage map. The genetic map of *R. sativus* was covered by at least 35 disrupted *A. thaliana* genomic fragments and 90% of the genetic map corresponded to regions of the *A. thaliana* genome that had been doubled, tripled, or quadrupled. All ESTs that mapped onto LG9 in the *R. sativus* map corresponded to ca. 70% of *A. thaliana* Chr5. However, no perfectly homologous linkage groups were observed within the genetic map of *R. sativus*. These results suggest that the tripling of the *R. sativus* genome occurred at some point after divergence from its common ancestor with *A. thaliana*, and that this amplification was followed by structural rearrangements, including deletion of parts of the chromosomes. Alternatively, one part of the genome may have undergone a duplication event, while another part tripled. These events may have occurred at or after the time of divergence between *R. sativus* and *A. thaliana*, ca. 20 million years ago.^{31,32}

In addition to comparative analysis between *R. sativus* and *A. thaliana*, the genome structure of *B. rapa* was compared with *R. sativus* via the *A. thaliana* genome. The two species shared large syntenic regions across the *A. thaliana* genome, which suggests that large regions of the *R. sativus* and *B. rapa* genomes are conserved. Several scattered syntenic regions were also observed on the *A. thaliana* genome, e.g. the distal part of the long arm of Chr5. However, there was no conservation in the order or composition of the corresponding genomic segments between *R. sativus* and *B. rapa* (Fig. 3),¹¹ which suggests no chromosomal synteny in this region among the three species. Absence of chromosomal synteny was also reported between *A. thaliana* and *B. oleracea* or *B. nigra*.^{9,10} It has been suggested that the three *Brassica* diploids, i.e. *B. rapa*, *B. oleracea*, and *B. nigra*, evolved via chromosomal structural rearrangements and/or polyploidy.^{9–11} The results from this study confirm the hypothesis that *R. sativus* and the three *Brassica* diploids differentiated independently from a common ancestor with *A. thaliana* and that this divergence occurred via genome rearrangement and/or polyploidy events at and/or after differentiation.

Since the first report for artificial amphidiploids between *R. sativus* and *B. oleracea*,³³ amphidiploids derived from crosses between several combinations of Brassicaceae have been synthesized.³⁴ Because the amphidiploids were important materials for plant breeding due to their vigorous growths and adaptability for alien chromosomes, the mechanisms for

the hybridization and the amphidiploid formation have been investigated by cytogenetic, epigenetic, and genomic approaches.³³ According to our results of the comparative genomics of the Brassicaceae, chromosomal synteny is unnecessary for hybridization and the amphidiploid formation, suggesting that genetic factors like *Ph1* reported in wheat,³⁵ micro-synteny, and/or nuclear-organelle interactions might be required.

As has been observed with the genetic and genomic studies of *Brassica* species,^{12,13} a comparative map between *R. sativus* and the *A. thaliana* genome will accelerate gene identification in *Raphanus* species. In particular, it will aid candidate gene isolation since a large number of genes/traits have already been characterized and mapped onto the *A. thaliana* genome. Kaneko *et al.*¹⁴ identified a QTL associated with resistance to yellow disease caused by *Fusarium oxysporum* f. sp. *raphani*, and this QTL was linked to the OPJ14 locus on LG1. According to our comparative map between *R. sativus* and *A. thaliana*, this locus is predicted to correspond to the long arm of *A. thaliana* Chr1, 27 Mb from the top of the chromosome (Supplementary Table S2). TIR-NBS genes have been implicated in disease resistance in many plant species.³⁶ A cluster of these genes was identified in the chromosomal region of *A. thaliana* that corresponds to resistance to yellow disease in the comparative map, a finding which suggests that a member of the TIR-NBS gene family is responsible for *F. oxysporum* resistance in *R. sativus*.

The *R. sativus* EST data, SSR markers and genetic map developed in this study can be used for various genetic analyses including gene mapping, QTL analysis, population genetics, marker-assisted breeding, and whole-genome sequencing studies. This study has provided a standard map for genomics, genetics, and breeding of *R. sativus* and related species.

Acknowledgements: We are grateful to Prof. Kazunari Nomura (Nihon University, Japan) for providing the rat-tailed radish.

Supplementary data: Supplementary data are available at www.dnaresearch.oxfordjournals.org.

Funding

This work was supported by the Kazusa DNA Research Institute and the Mikado Kyowa Seed Co., Ltd.

References

1. Deulvot, C., Charrel, H., Marty, A., et al. 2010, Highly-multiplexed SNP genotyping for genetic mapping and

- germplasm diversity studies in pea, *BMC Genomics*, **11**, 468.
2. Hyten, D.L., Song, Q., Choi, I.Y., et al. 2008, High-throughput genotyping with the GoldenGate assay in the complex genome of soybean, *Theor. Appl. Genet.*, **116**, 945–52.
 3. Hyten, D.L., Song, Q., Fickus, E.W., et al. 2010, High-throughput SNP discovery and assay development in common bean, *BMC Genomics*, **11**, 475.
 4. Muchero, W., Diop, N.N., Bhat, P.R., et al. 2009, A consensus genetic map of cowpea [*Vigna unguiculata* (L) Walp.] and synteny based on EST-derived SNPs, *Proc. Natl. Acad. Sci. USA*, **106**, 18159–64.
 5. Shirasawa, K., Isobe, S., Hirakawa, H., et al. 2010, SNP discovery and linkage map construction in cultivated tomato, *DNA Res.*, **17**, 381–91.
 6. Kalia, R.K., Rai, M.K., Kalia, S., Singh, R. and Dhawan, A.K. 2011, Microsatellite markers: an overview of the recent progress in plants, *Euphytica*, **117**, 309–34.
 7. The Arabidopsis Genome Initiative 2000, Analysis of the genome sequence of the flowering plant *Arabidopsis thaliana*, *Nature*, **408**, 796–815.
 8. U, N. 1935, Genome-analysis in *Brassica* with special reference to the experimental formation of *B. napus* and peculiar mode of fertilization, *Jpn. J. Bot.*, **7**, 389–452.
 9. Lagercrantz, U. 1998, Comparative mapping between *Arabidopsis thaliana* and *Brassica nigra* indicates that Brassica genomes have evolved through extensive genome replication accompanied by chromosome fusions and frequent rearrangements, *Genetics*, **150**, 1217–28.
 10. Lan, T.H., DelMonte, T.A., Reischmann, K.P., et al. 2000, An EST-enriched comparative map of *Brassica oleracea* and *Arabidopsis thaliana*, *Genome Res.*, **10**, 776–88.
 11. Kim, J.S., Chung, T.Y., King, G.J., et al. 2006, A sequence-tagged linkage map of *Brassica rapa*, *Genetics*, **174**, 29–39.
 12. Li, F., Kitashiba, H., Inaba, K. and Nishio, T. 2009, A *Brassica rapa* linkage map of EST-based SNP markers for identification of candidate genes controlling flowering time and leaf morphological traits, *DNA Res.*, **16**, 311–23.
 13. Suwabe, K., Tsukazaki, H., Iketani, H., et al. 2006, Simple sequence repeat-based comparative genomics between *Brassica rapa* and *Arabidopsis thaliana*: the genetic origin of clubroot resistance, *Genetics*, **173**, 309–19.
 14. Kaneko, Y., Kimizuka-Takagi, C., Bang, S.W. and Matsuzawa, Y. 2007, Radish, In: Kole, C. (ed.), *Genome Mapping and Molecular Breeding in Plants*, vol. 5. Springer: New York, pp. 141–60.
 15. Kitamura, S. 1958, Cultivars of radish and their change, In: Nishiyama, I. (ed.), *Japanese Radish*, Japan Society for the Promotion of Science: Tokyo, pp. 1–19 (in Japanese).
 16. Arumuganathan, K. and Earle, E.D. 1991, Nuclear DNA content of some important plant, *Plant Mol. Biol. Rep.*, **9**, 208–18.
 17. Budahn, H., Peterka, H., Mousa, M.A., Ding, Y., Zhang, S. and Li, J. 2009, Molecular mapping in oil radish (*Raphanus sativus* L.) and QTL analysis of resistance against beet cyst nematode (*Heterodera schachtii*), *Theor. Appl. Genet.*, **118**, 775–82.
 18. Kamei, A., Tsuru, M., Kubo, N., et al. 2010, QTL mapping of clubroot resistance in radish (*Raphanus sativus* L.), *Theor. Appl. Genet.*, **120**, 1021–7.
 19. Tsuru, M., Suwabe, K., Kubo, N., Matsumoto, S. and Hirai, M. 2008, Mapping of QTLs controlling root shape and red pigmentation in radish, *Raphanus sativus* L., *Breed. Sci.*, **58**, 55–61.
 20. Sato, S., Isobe, S., Asamizu, E., et al. 2005, Comprehensive structural analysis of the genome of red clover (*Trifolium pratense* L.), *DNA Res.*, **12**, 301–64.
 21. Tatusov, R.L., Fedorova, N.D., Jackson, J.D., et al. 2003, The COG database: an updated version includes eukaryotes, *BMC Bioinformatics*, **4**, 41.
 22. Shirasawa, K., Asamizu, E., Fukuoka, H., et al. 2010, An interspecific linkage map of SSR and intronic polymorphism markers in tomato, *Theor. Appl. Genet.*, **121**, 731–9.
 23. Botella, M.A., Coleman, M.J., Hughes, D.E., Nishimura, M.T., Jones, J.D. and Somerville, S.C. 1997, Map positions of 47 *Arabidopsis* sequences with sequence similarity to disease resistance genes, *Plant J.*, **12**, 1197–211.
 24. Fourmann, M., Barret, P., Froger, N., et al. 2002, From *Arabidopsis thaliana* to *Brassica napus*: development of amplified consensus genetic markers (ACGM) for construction of a gene map, *Theor. Appl. Genet.*, **105**, 1196–206.
 25. Van Ooijen, J.W. 2006, JoinMap[®]4, *Software for the Calculation of Genetic Linkage Maps in Experimental Populations*. Kyazma, B.V: Wageningen, The Netherlands.
 26. Bett, K.E. and Lydiate, D.J. 2003, Genetic analysis and genome mapping in *Raphanus*, *Genome*, **46**, 423–30.
 27. Tsuru, M., Suwabe, K., Kubo, N., Matsumoto, S. and Hirai, M. 2005, Construction of a molecular linkage map of radish (*Raphanus sativus* L.), based on AFLP and *Brassica*-SSR markers, *Breed. Sci.*, **55**, 107–11.
 28. Gosselin, I., Zhou, Y., Bousquet, J. and Isabel, N. 2002, Megagametophyte-derived linkage maps of white spruce (*Picea glauca*) based on RAPD, SCAR and ESTP markers, *Theor. Appl. Genet.*, **104**, 987–97.
 29. Allard, R.W. 1963, Evidence for genetic restriction of recombination in the lima bean, *Genetics*, **48**, 1389–95.
 30. Axelsson, T., Bowman, C.M., Sharpe, A.G., Lydiate, D.J. and Lagercrantz, U. 2000, Amphidiploid *Brassica juncea* contains conserved progenitor genomes, *Genome*, **43**, 679–88.
 31. Yang, Y.W., Lai, K.N., Tai, P.Y. and Li, W.H. 1999, Rates of nucleotide substitution in angiosperm mitochondrial DNA sequences and dates of divergence between *Brassica* and other angiosperm lineages, *J. Mol. Evol.*, **48**, 597–604.
 32. Koch, M.A., Haubold, B. and Mitchell-Olds, T. 2000, Comparative evolutionary analysis of chalcone synthase and alcohol dehydrogenase loci in *Arabidopsis*, *Arabis*, and related genera (Brassicaceae), *Mol. Biol. Evol.*, **17**, 1483–98.

33. Karpechenko, G.D. 1927, Polyploid hybrids *Raphanus sativus* L. times *Brassica oleracea* L., *Bull. Appl. Bot.*, **17**, 305–410.
34. Snowdon, R.J. 2007, Cytogenetics and genome analysis in *Brassica* crops, *Chromosome Res.*, **15**, 85–95.
35. Riley, R. and Chapman, V. 1959, Genetic control of the cytologically diploid behaviour of hexaploid wheat, *Nature*, **182**, 713–5.
36. Meyers, B.C., Kozik, A., Griego, A., Kuang, H. and Michelmore, R.W. 2003, Genome-wide analysis of NBS-LRR-encoding genes in Arabidopsis, *Plant Cell*, **15**, 809–34.