

# Chicken CRTAM Binds Nectin-Like 2 Ligand and Is Upregulated on CD8<sup>+</sup> $\alpha\beta$ and $\gamma\delta$ T Lymphocytes with Different Kinetics

Maria Zechmann<sup>1</sup>, Sven Reese<sup>2</sup>, Thomas W. Göbel<sup>1\*</sup>

<sup>1</sup> Institute for Animal Physiology, Department of Veterinary Sciences, University of Munich, Munich, Germany, <sup>2</sup> Institute for Anatomy, Histology and Embryology, Department of Veterinary Sciences, University of Munich, Munich, Germany

## Abstract

During a search for immunomodulatory receptors in the chicken genome, we identified a previously cloned chicken sequence as CRTAM homologue by its overall identity and several conserved sequence features. For further characterization, we generated a CRTAM specific mab. No staining was detectable in freshly isolated cell preparations from thymus, bursa, caecal tonsils, spleen, blood and intestine. Activation of splenocytes with recombinant IL-2 increased rapid CRTAM expression within a 2 h period on about 30% of the cells. These CRTAM<sup>+</sup> cells were identified as CD8<sup>+</sup>  $\gamma\delta$  T lymphocytes. In contrast, CRTAM expression could not be stimulated on PBL with IL-2, even within a 48 h stimulation period. As a second means of activation, T cell receptor (TCR) crosslinking using an anti- $\alpha\beta$ -TCR induced CRTAM on both PBL and splenocytes. While CRTAM expression was again rapidly upregulated on splenocytes within 2 h, it took 48 h to reach maximum levels of CRTAM expression in PBL. Strikingly, albeit the stimulation of splenocytes was performed with anti- $\alpha\beta$ -TCR, CRTAM expression after 2 h was mainly restricted to CD8<sup>+</sup>  $\gamma\delta$  T lymphocytes, however, the longer anti-TCR stimulation of peripheral blood lymphocytes (PBL) resulted in CRTAM expression on  $\alpha\beta$  T lymphocytes. In order to characterize the potential ligand we cloned and expressed chicken Necl-2, a member of the nectin and nectin-like family which is highly homologous to its mammalian counterpart. Three independent assays including a reporter assay, staining with a CRTAM-Ig fusion protein and a cell conjugate assay confirmed the interaction of CRTAM with Necl-2 which could also be blocked by a soluble CRTAM-Ig fusion protein or a CRTAM specific mab. These results suggest that chicken CRTAM represents an early activation antigen on CD8<sup>+</sup> T cells which binds to Necl-2 and is upregulated with distinct kinetics on  $\alpha\beta$  versus  $\gamma\delta$  T lymphocytes.

**Citation:** Zechmann M, Reese S, Göbel TW (2013) Chicken CRTAM Binds Nectin-Like 2 Ligand and Is Upregulated on CD8<sup>+</sup>  $\alpha\beta$  and  $\gamma\delta$  T Lymphocytes with Different Kinetics. PLoS ONE 8(12): e81942. doi:10.1371/journal.pone.0081942

**Editor:** R. Lee Mosley, University of Nebraska Medical center, United States of America

**Received:** June 27, 2013; **Accepted:** October 18, 2013; **Published:** December 10, 2013

**Copyright:** © 2013 Zechmann et al. This is an open-access article distributed under the terms of the Creative Commons Attribution License, which permits unrestricted use, distribution, and reproduction in any medium, provided the original author and source are credited.

**Funding:** Supported by Deutsche Forschungsgemeinschaft (DFG) grant number GO489/5-1. The funders had no role in study design, data collection and analysis, decision to publish, or preparation of the manuscript.

**Competing Interests:** The authors have declared that no competing interests exist.

\* E-mail: goebel@lmu.de

## Introduction

CD8<sup>+</sup> T cells and natural killer (NK) cells display a number of receptors that are important in the recognition of target cells. One group of receptors expressed by both cell types belongs to the immunoglobulin superfamily (IgSF) and includes CD226 (DNAM-1), TIGIT (WUCAM), CD96, and CRTAM (CD355) [1,2]. These receptors bind to members of the nectin and nectin-like family, which are IgSF members, too and mediate Ca<sup>2+</sup> independent homophilic and heterophilic adhesion. They are also important for adhesion between neighboring epithelial cells.

CRTAM was initially identified in a study devised to characterize upregulated genes in NK-T cells and received its name as “class I-restricted T cell-associated molecule” to denote its restricted expression pattern on CD8<sup>+</sup> T cells. It has been further characterized as an important activation marker for both CD8<sup>+</sup> T cells and NK-T cells [3]. In man, CRTAM expression is observed on activated CD8<sup>+</sup> T cells, as well as on natural killer (NK) cells and a small subset of CD4<sup>+</sup> T cells [3,4]. As a type I transmembrane protein CRTAM is composed of an amino-terminal Ig-like domain of the variable type (V-type), and a

membrane proximal Ig-like domain of the constant type 1 (C1-type). Its intracytoplasmic domain contains a carboxyl-terminal class I PSD-95/Disc-large/ZO-1 (PDZ)-binding motif, capable of interacting with PDZ domain.

The CRTAM gene is located on human chromosome 11 (11q24.1), whereas the mouse counterpart is located on chromosome 9 (9 21.79 cM), both consisting of 10 exons. Several groups have identified Necl-2 (CADM1, IGSF4, SYNCAM, TSLC1, synCAM1) as a ligand of both murine and human CRTAM [4–7]. Engagement of CRTAM promotes cytotoxic effects of NK cells towards Necl-2 expressing tumor cells. Coligation of TCR and CRTAM on CD8 positive T cells causes interferon- $\gamma$  (IFN- $\gamma$ ) secretion in vitro [4].

Recently, a study highlighted the role of CRTAM expression on V $\gamma$ 9V $\delta$ 2 T cells after TCR triggering. Although this T cell subpopulation exerted neither cytotoxicity nor cytokine secretion, an interaction of CRTAM on these cells with Necl-2 bearing tumor cells induced CRTAM down regulation and cell death of the V $\gamma$ 9V $\delta$ 2 T cells, thus revealing the CRTAM involvement in the survival of activated V $\gamma$ 9V $\delta$ 2 T cells [8].

Aside from the presence on cells of the immune system and its immunological functions, CRTAM is also involved in cell-cell adhesion due to its expression in epithelial cells [7] and has a role in the transcytosis of neural stem cells across brain vascular endothelial cells [9].

In 2000, a novel chicken receptor was characterized as member of the IgSF [10]. Since mRNA could only be detected in mitogen-treated thymic and splenic cells as well as in embryonic cells at developmental time points known for T cell clonal expansion it was designated as cTADS (chicken thymic activation and developmental sequence).

The characterization of IgSF families in the chicken with immunomodulatory capacity has been instrumental to gain novel insights into the phylogeny, tissue distribution and function of various IgSF immune receptors [11–13]. Therefore, during an attempt to find additional families, sequence analyses revealed that cTADS is the chicken CRTAM homologue. We now demonstrate using a novel CRTAM specific mab that avian CRTAM expression is restricted to activated CD8<sup>+</sup> T cells. Although absent from resting cells, stimulation with IL-2 or anti- $\alpha$ V $\beta$ 1-TCR leads to a rapid CRTAM upregulation on CD8<sup>+</sup>  $\gamma$  $\delta$  T cells and at later time points on  $\alpha$  $\beta$  T cells. Furthermore, we were able to characterize Necl-2 as a ligand for chicken CRTAM. These results point to an important function of CRTAM especially on  $\gamma$  $\delta$  T cells, a close interaction of  $\alpha$  $\beta$  and  $\gamma$  $\delta$  T cells during activation and they finally provide evidence for the high phylogenetic conservation of the adhesion receptor family on lymphocytes that binds to nectins.

## Materials and Methods

### Ethics Statement

All of the experimental procedures were in accordance with institutional, state and federal guidelines on animal welfare. The animal experiments were approved by the committee for the Care and Use of Laboratory animals of the Government of Upper Bavaria, Germany (permit number: 55.2-1-54-2531.6-12.09) and all efforts were made to minimize animal suffering during work.

### Animals

Fertilized eggs of chicken line M11, provided by S. Weigend, Federal Agricultural Research Center, Mariensee, Germany, were hatched at the Institute for Animal Physiology, University of Munich. The birds were raised under conventional conditions and used for experiments at the age of 8–16 weeks. Balb/c mice were purchased from Charles River Wiga GmbH (Sulzfeld, Germany).

### Cloning procedures and sequence analysis

The chicken thymic activation and developmental sequence (cTADS) was originally described in a previous study [10] and will be named CRTAM throughout the paper. For the generation of the constructs, PCR primers for amplification were designed based on the CRTAM and Necl-2 sequence (CRTAM: accession no. NM\_001030347.1, Necl-2: accession number XM\_417901.3; Table 1). The primers were flanked by sequences recognizing residues of the respective cloning vectors to allow cloning with overlapping ends using the Gibson Assembly<sup>TM</sup> Master Mix. (New England Biolabs, Ipswich, USA). As templates for CRTAM and Necl-2 amplification, cDNA derived from a chicken thymic cell line (T1-6G5) and chicken brain was used, respectively.

After purification with Wizard<sup>®</sup>SV Gel and PCR Clean-up system (Promega, Mannheim, Germany), the PCR products were linked to a modified pcDNA3.1/V5-His Topo Vector (Invitrogen, Karlsruhe, Germany) containing a N-terminal FLAG epitope tag,

**Table 1.** Oligonucleotides used for cloning.

Number	Sequence	O	Specificity
1718	GGACGATGACGATAAGGAAAttgaaaccataactgta	S	CRTAM
1719	CTGTGCTGGATATCTGCAatccttctccttcttac	AS	CRTAM
1740	GGACGATGACGATAAGggccagaacttgataacag	S	Necl-2
1741	TGGATATCTGCAGAATTcgctccagctccttattg	AS	Necl-2
1756	AAGCTGGTGCCACGCgaaaccataactgtacagg	S	CRTAM-Ig
1757	GGCATGTGTGAGTTTTGccttctccttcttact	AS	CRTAM-Ig

O: orientation indicated as S (sense) and AS (antisense); Capital letters denote regions overlapping with vectors and lower case letters those regions specific for the gene indicated.

doi:10.1371/journal.pone.0081942.t001

the transmembrane domain of chicken CD8 $\alpha$  and the cytoplasmic domain of murine CD3 $\zeta$  [14,15] using the Gibson Assembly<sup>TM</sup> Master Mix. In order to generate a soluble CRTAM-Ig fusion protein the primers were generated to amplify the CRTAM extracellular region with overlapping sequences to a vector containing the human Ig signal peptide and the C<sub>H</sub>2, C<sub>H</sub>3 domain of human IgG1 [16] using the Gibson Assembly. All constructs were verified by sequencing (GATC, Konstanz, Germany). The Lasergene software package was used for sequence analyses and Mega5 [17] for the construction of the phylogenetic tree.

### Cell lines, transfection and expression

The chicken CRTAM-FLAG and Necl-2-FLAG constructs were used to establish stable HEK 293 cells and the CRTAM-FLAG was also used to generate a stable BWZ.36 cell line. The human embryonic kidney (HEK) 293 cell line [18] was stably transfected using the Metafectene liposomal transfection reagent according to the manufacturer's protocol (Biontex, Planegg, Germany) for both CRTAM and Necl-2. After 24 h of incubation (37°C, 5% CO<sub>2</sub>) the transfected cells were seeded in a 96-well flat bottom plate and cultured with medium containing 0.8 mg/ml G418 (Biochrom AG, Berlin, Germany) for 2 weeks.

The mouse thymocyte cell line BWZ.36 [19] was stably transfected by electroporation (3 $\times$ 10<sup>6</sup> cells, 200 V with 950  $\mu$ F capacitance) with the CRTAM-FLAG expression construct.

Transfected cells were plated in a 96-well flat bottom plate and selected in medium containing 0.8 mg/ml G418 (Biochrom AG, Berlin, Germany) for 10 days at 37°C.

Grown single colonies were analyzed by flow cytometry (FACS CantoII, BD, Heidelberg, Germany) for surface expression of the FLAG epitope.

### Expression of chicken CRTAM-Ig fusion protein and ELISA

The CRTAM-Ig fusion construct was stably transfected into HEK 293 cells using the Metafectene liposomal transfection reagent according to the manufacturer's protocol (Biontex, Planegg, Germany). After 24 h of incubation (37°C, 5% CO<sub>2</sub>) the transfected cells were seeded in a 96-well flat bottom plate and cultured with medium containing 0.8 mg/ml G418 (Biochrom AG, Berlin, Germany) for 2 weeks. The culture supernatants were analyzed for CRTAM-huIg secretion by sandwich ELISA as described [20]. Soluble CRTAM was then affinity-purified on protein G-coupled Sepharose using standard procedures.

## Generation of a monoclonal antibody

For mab generation, Balb/c mice were immunized three times in 3 weeks intervals with  $1 \times 10^7$  of the stably CRTAM-FLAG transfected 293 cells. The mab were produced according to standard methods with the SP2/O myeloma cell line. Hybridoma supernatants were tested by flow cytometry on either CRTAM-FLAG transfected or untransfected BWZ.36 cells as described before [21]. For further characterization of chicken CRTAM, we selected mab 8A10 (IgM).

## Cell preparation

Single cell suspensions of bursa, caecal tonsils, spleen and thymus were prepared by passing the organs through a stainless steel mesh. Lymphocytes were obtained from the cell suspensions by density centrifugation on Ficoll-Hypaque (Biochrom, Berlin, Germany). Peripheral blood lymphocytes (PBL) were isolated by slow-speed centrifugation [22]. Intestinal intraepithelial lymphocytes (IEL) from the duodenal loop were prepared as described before [23].

## Activation of cells and cell culture

Activated lymphocytes isolated from blood, spleen, thymus and caecal tonsils as well as IEL were generated by cultivation  $1 \times 10^7$  cells/ml in a 24-well plate with either a 1:1000 dilution of recombinant IL-2 produced in our laboratory [24] or with plate-bound anti-TCR-2 (SouthernBiotech, Birmingham, USA) at a concentration of 10  $\mu\text{g}/\text{ml}$  for different time periods. The cells were cultured with RPMI 1640 medium supplemented with 8% FCS, 2% chicken serum and 1% penicillin/streptomycin at 41°C and analyzed by flow cytometry.

## Antibodies and immunofluorescence analysis

Single-cell staining was performed with the 8A10 mab, followed by a goat-anti-mouse IgM-allophycocyanin (APC) conjugate (SouthernBiotech, Birmingham, USA), or with anti-FLAG M2 mab (Sigma-Aldrich, Munich, Germany), followed by a goat-anti-mouse IgG1 APC (SouthernBiotech, Birmingham, USA) or R-phycoerythrin (R-PE) conjugate (SouthernBiotech, Birmingham, USA), respectively. The staining with the CRTAM-huIg fusion protein was followed by a goat-anti-human IgG R-PE conjugate (SouthernBiotech, Birmingham, USA). For double immunofluorescence analysis, the cells were first incubated with a mixture of primary mab, followed by incubation with an APC-conjugated goat-anti-mouse IgM antibody in combination with goat-anti-mouse IgG1 R-PE conjugate (SouthernBiotech, Birmingham, USA). Additional mab used for staining were specific for chicken CD3 (CT3, mouse IgG1) [25], chicken CD4 and CD8 (CT4, mouse IgG1; CT8 mouse, IgG1 [26], Bu-1 (AV20, mouse IgG1) specific for B lymphocytes [27], CD25 (IgG1), the  $\alpha$ -chain of the IL-2-receptor, chicken TCR-1 (mouse IgG1) to discriminate the  $\gamma\delta$  T cells ( $\gamma\delta$ -TCR [28]), and TCR-2 and TCR-3 to distinguish different subsets of  $\alpha\beta$  T cells ( $\alpha\text{V}\beta 1$ -TCR [29];  $\alpha\text{V}\beta 2$ -TCR [30], both mouse IgG1). For each staining, appropriate isotype matched controls were used.

Dead cells were discriminated by staining with Fixable Viability Dye eFluor<sup>®</sup> 780 (affymetrix eBioscience, Frankfurt, Germany) or 7-amino-actinomycin D (7-AAD, Sigma-Aldrich, Munich, Germany; 25  $\mu\text{g}/\mu\text{l}$ ) and the living cell population was analyzed by flow cytometry (FACS Canto II, Beckton Dickinson, USA) using the BD FACS DIVA 6.1.3 software.

## BWZ.36 reporter assay and ELISA

The BWZ.36 cells are stably transfected with a  $\beta$ -galactosidase reporter cassette under the control of the IL-2 promoter containing three NFAT repeats. A construct was generated encoding the extracellular CRTAM domains fused to the CD8 transmembrane domain and the CD3 $\zeta$  cytoplasmatic domain, which was used to establish a stable BWZ.36 clone. Upon CRTAM ligation the ITAM of the CD3 $\zeta$  cytoplasmatic domain is phosphorylated and activates the NFAT promoter. As a consequence  $\beta$ -galactosidase is induced and can be detected by adding chlorophenolred- $\beta$ -D-galactopyranosid (CPRG).  $\beta$ -galactosidase has the ability to cleave CPRG into galactose and chlorophenolred, leading to a color change that can be detected and quantified by optical density reading at 575 nm. 24-well cell culture dishes were coated with anti-FLAG mab 10  $\mu\text{g}/\text{ml}$  at 4°C over night for a positive control or were left uncoated. Each cell line was plated at a total amount of  $1.5 \times 10^5$  cells in the dishes and was incubated for 24 h at 37°C. For our binding study, we co-cultivated stably CRTAM-FLAG transfected BWZ.36 reporter cells with the stably Necl-2-FLAG transfected HEK 293 cells. As positive controls, we incubated the CRTAM-FLAG transfected BWZ.36 in the anti-FLAG mab coated wells. As a mock-control, we co-cultivated the stably expressing BWZ.36 reporter cells with a HEK 293 cell line expressing a CRTAM unrelated molecule to exclude unspecific binding. To verify the specificity of chicken CRTAM to chicken Necl-2 we co-cultivated the Necl-2-FLAG transfected HEK 293 cells with the CRTAM-huIg fusion protein, both pure and in a concentration of 1:10 for 20 minutes to block specific binding sites before adding the CRTAM-FLAG transfected BWZ.36 cells. After incubation time the cells were lysed and the  $\beta$ -galactosidase activity was measured by using 130  $\mu\text{l}/\text{well}$  CPRG (Roche, Mannheim, Germany) and quantified by optical density reading at 575 nm 18 h after incubation.

## Statistical analysis

The data of the BWZ.36 reporter assays is presented as mean value (mean) and standard deviation (SD) and a dependent t-test was employed to assess differences using the IBM SPSS program version 21.0 based on a significance level of 5%. Furthermore an adjustment for multiple testing was done using the Bonferroni-Holm correction for multiple comparisons. Finally, values of  $p < 0.01667$  were considered significant.

## Conjugate Assay

Untransfected BWZ.36, mock transfected BWZ.36 and BWZ.36-CRTAM cells were labeled with PKH67 Green Fluorescent Cell Linker Kit for 2 minutes (Sigma-Aldrich, Munich, Germany), whereas 293-Necl-2 cells were labeled with Vybrant<sup>®</sup> DiD cell-labeling solution (Invitrogen, Karlsruhe, Germany) for 5 minutes using standard procedures. After the cells were washed three times, labeled 293-Necl-2 cells ( $2.5 \times 10^5$ ) were mixed with either labeled BWZ.36-CRTAM cells, mock-transfected BWZ.36 cells or untransfected BWZ.36 cells ( $2.5 \times 10^5$ ), spun down and incubated at 37°C for 2 h. The conjugates were washed once and gently resuspended before flow cytometric analysis. For blocking experiments CRTAM transfected BWZ.36 cells or mock-transfected BWZ.36 cells were preincubated with 8A10 mab for 20 min at room temperature.

## Results

### Identification of chicken CRTAM

In an attempt to identify novel Ig-like receptors with immunomodulatory potential we found a previously cloned gene

designated cTADS. The gene is located on a 12.5 kb region of chromosome 24 and is encoded by 12 exons. CRTAM sequences can also be found in other avian species (turkey: Chromosome 26: 3,303,411-3,315,820; 12 exons and an incomplete version in zebra finch: chromosome 24:3450462-3458344:1). As depicted in Fig. 1A, cTADS shares significant homology with mammalian CRTAM. It contains two Ig domains in its extracellular region, the first represents a V-type and the second a C-type Ig domain. The linking region between the Ig and transmembrane region is extended with more than 50 additional amino acids present in the chicken and corresponding turkey sequence (Fig. 1A). Analysis of the genomic structure revealed the presence of two additional exons in the avian CRTAM genes, responsible for the extended linking region. The cytoplasmic domain is of equal length and contains a C-terminal PDZ-binding motif (Fig. 1A).

We next constructed a phylogenetic tree with the receptors known to bind to Nectins or Nectin-like proteins. As expected, the homologues of human and mouse CD96, TIGIT and CD226 form closely related pairs. The CRTAM receptors form a distantly related clade, but clearly the chicken CRTAM clusters together with its respective mammalian homologues (Fig. 1B). In conclusion, we have identified the chicken cTADS sequence as CRTAM homologue.

### Generation of a chicken CRTAM specific mab that does not react with resting cells

In order to produce a CRTAM specific mab we generated two cell lines with a N-terminal FLAG-tagged CRTAM version that displayed both extracellular Ig domains fused to the chicken CD8 transmembrane and murine CD3 $\zeta$  cytoplasmic domains. Following immunization, mab supernatants were evaluated by their binding properties to the stably transfected cell lines in comparison to the positive control FLAG staining and the untransfected controls (Fig. 2A). One mab designated 8A10, which resembles an IgM isotype, was selected for the further studies.

For analyzing the tissue distribution of chicken CRTAM we initially stained cell preparations obtained from thymus, bursa, blood, spleen, caecal tonsils and intestine with the 8A10 mab, however, we failed to detect CRTAM expression on the cell surface of these freshly isolated cells (Fig. 2B). This indicated that the mab is able to specifically recognize CRTAM on transfected cells, but it either did not stain the antigen on native cells or the molecule was not present on these cells.

### CRTAM is transiently expressed on activated cells

Since CRTAM is a receptor known to be upregulated upon activation, we next evaluated if activation of chicken splenocytes would lead to CRTAM expression. Initial experiments were performed with the lectin Concanavalin A, phorbol-myristate-acetate in combination with Ca-ionophore (PMA/Ca-ionophore), recombinant IL-2 and TCR crosslinking (data not shown). While all of the reagents stimulated CRTAM expression, we focused on the latter two reagents due to their superior stimulation of CRTAM.

IL-2 treatment was able to induce splenocyte activation as judged by increasing CD25 expression (Fig. 3A, middle panels). IL-2 also induced a rapid CRTAM upregulation reaching maximum levels as early as 2 h following stimulation and declining constantly thereafter (Fig. 3A upper panels). Identical treatment of PBL, however, did not induce detectable CRTAM expression (Fig. 3B upper panels) although IL-2 caused cellular activation as judged by the increased CD25 expression during the 48 h stimulation period (Fig. 3B, middle panels). When several dilutions of IL-2 were tested (in the range of 1:10 to 1:1000), none of these

concentrations were able to induce CRTAM expression (data not shown). Anti-TCR-2 stimulation of splenocytes also induced CRTAM expression after 2 h rapidly declining at later timepoints (Fig. 3A, lower panels). In contrast to the IL-2 stimulation of PBL, that failed to induce detectable CRTAM expression, anti-TCR-2 treatment of PBL resulted in CRTAM expression visible after 6 h and increasing to reach maximum levels at 48 h (Fig. 3B, lower panels).

These results indicate that CRTAM resembles an early activation marker and poses the question what cellular subsets are upregulating CRTAM following activation.

### CRTAM is restricted to CD8 positive T cells with distinct kinetics on $\alpha\beta$ versus $\gamma\delta$ T cells

To determine the cell types that express CRTAM we performed a series of double stainings using stimulated splenocytes and PBL. Following short term IL-2 stimulation of splenocytes, CRTAM was detectable on CD3 $^+$  T lymphocytes. CRTAM was undetectable on CD4 $^+$  T cells, in contrast it was present on a subset of CD8 $^+$  T cells (Fig. 4). By analyzing the distinct T cell subsets as characterized by their TCR usage, it became evident, that CRTAM was upregulated on a  $\gamma\delta$  T cell subpopulation, whereas most  $\alpha\beta$  T cells did not express CRTAM (Fig. 4). We consistently observed a correlation of TCR and CRTAM expression with those cells expressing high levels of CRTAM also displayed high amounts of TCR on their surface as judged by the fluorescence intensities (Fig. 4).

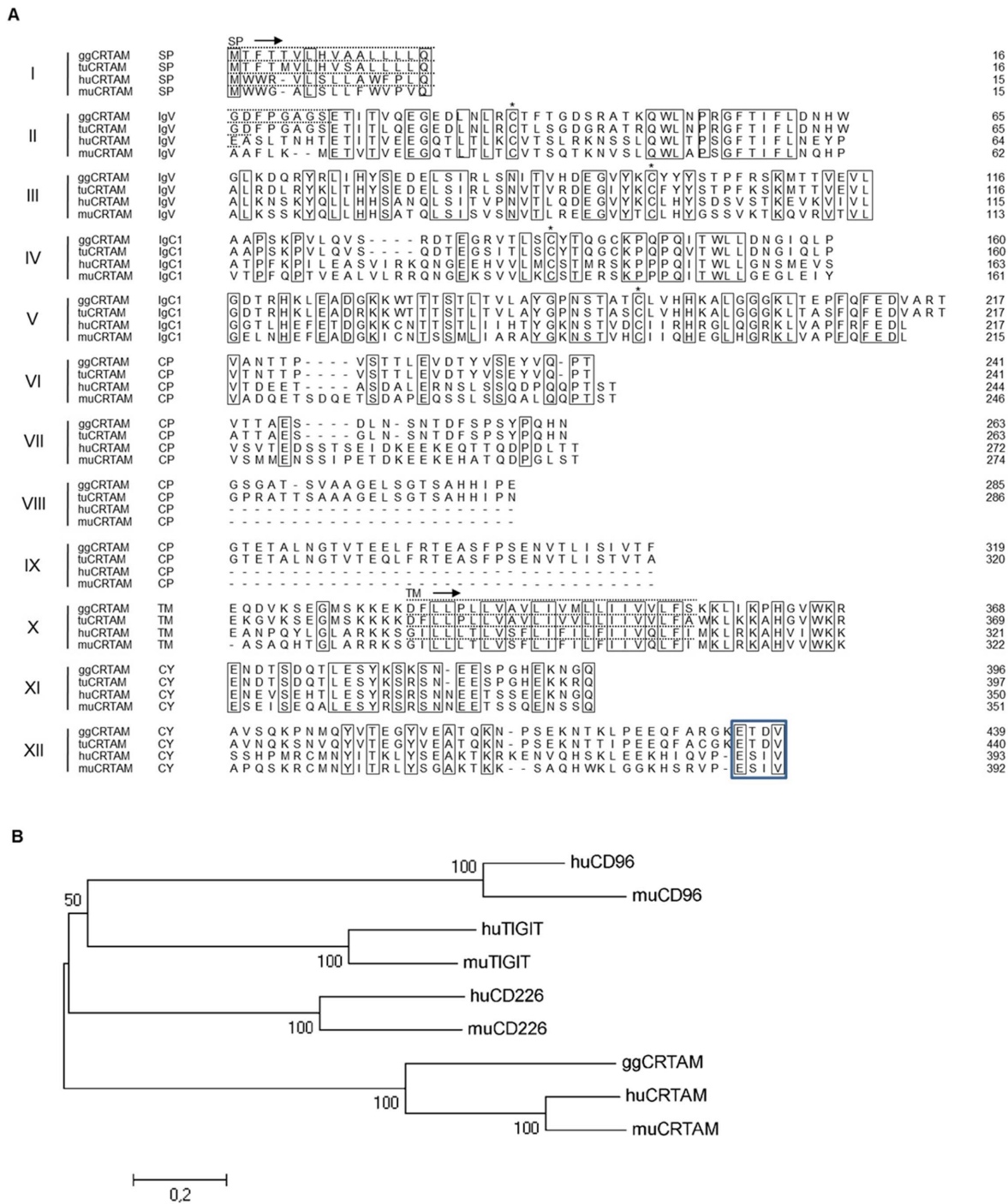
When similar immunofluorescence analyses were performed with splenocytes activated for 2 h with anti- $\alpha\text{V}\beta\text{1}$ -TCR (TCR-2 mab), CRTAM expression was again mainly expressed by a  $\gamma\delta$  T cell subset (Fig. 5A). This was surprising since the TCR stimulation was directed against  $\alpha\beta$  T cells. Only after 24 h to 48 h stimulation where CRTAM expression already decreased, its expression could also be detected on  $\alpha\beta$  T cells (Fig. 5B). Since we have observed different kinetics of anti-TCR stimulation between splenocytes and PBL, we also analyzed the 48 h time point of stimulated PBL. In that case, CRTAM expression was virtually absent from  $\gamma\delta$  T cells, but a subset of  $\alpha\beta$  T cells co-expressed CRTAM (Fig. 5C). These cells were also CD8 $^+$ . The reexpression of CRTAM following TCR-2 stimulation of splenocytes visible in the time period between 24 h and 48 h (Fig. 3A; increase of 8 to 13%) is due to the simultaneous decrease of CRTAM on  $\gamma\delta$  T cells and its increase on  $\alpha\beta$  T cells.

In conclusion, depending on the type of stimulation and the cellular source, CRTAM is upregulated on either CD8 $^+$   $\gamma\delta$  or  $\alpha\beta$  T cells, with the interesting observation that stimulation of the  $\alpha\beta$ -TCR in splenocytes leads to rapid CRTAM upregulation on  $\gamma\delta$  T cells

### Identification of the chicken nectin-like 2 molecule

To further explore the chicken CRTAM molecule we wanted to test whether it binds to the same ligand as in mammals, which is the nectin-like 2 protein (Necl-2) [5]. For this purpose, the chicken Necl-2 homologue was identified in the genome database by homology searches and cloned by PCR. Chicken Necl-2 is encoded by 12 exons on chromosome 24: 4,664,469-4,732,605 and shares about 80% identity to the corresponding human receptor (Fig. 6). Interestingly, as has been observed for the CRTAM gene, there are two additional exons present in the chicken that code for an extended connecting peptide close to the transmembrane region that is absent from the human sequence (Fig. 6).

As the human counterpart, the intracellular tail of chicken Necl-2 contains a type I PDZ-binding motif (PDZ) characterized by the

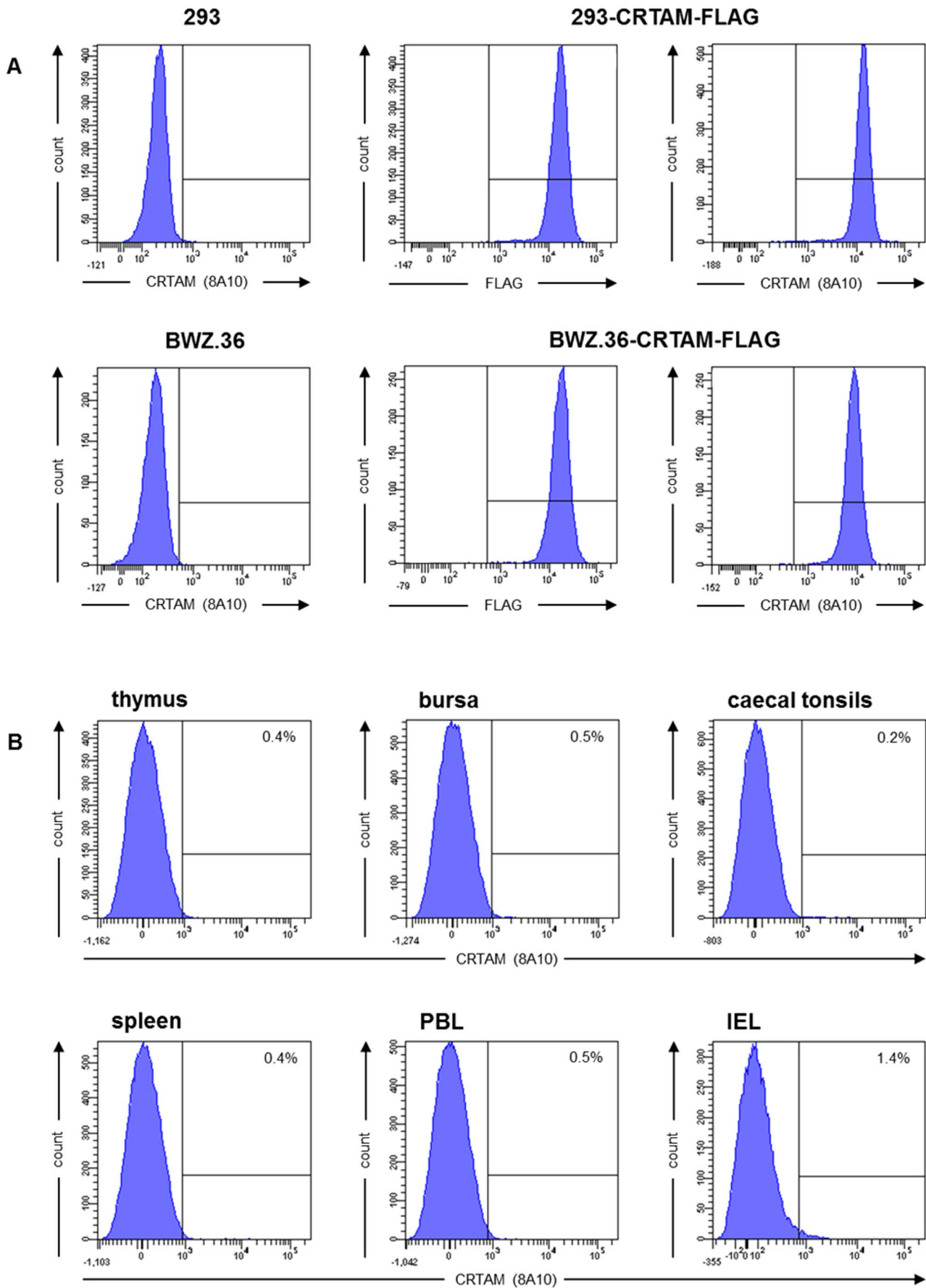


**Figure 1. Identification of chicken CRTAM.** (A) Ig domains (IgV, IgC1), connecting peptides (CP) and cytoplasmic domains (CY) as well as PDZ-binding motifs (framed) are indicated. The positions of the signal peptides (SP) and the transmembrane domains (TM) are marked by a bar above the sequence. The conserved cysteine residues are marked by asterisks. Exons are numbered according to the genomic structure of the chicken sequence. The alignment was performed separately for the different exons with ClustalW. Identical residues are boxed. (B) In order to delineate the phylogenetic relationships of the chicken and mammalian receptors indicated a neighbor-joining phylogenetic tree was generated using the MEGA5 software. Accession numbers: chicken (gg) CRTAM: NP\_001025518.1, turkey (tu) CRTAM: ENSMGAG0000001951, human (hu) CRTAM: NP\_062550.2, mouse (mu) CRTAM: NP\_062338.3, human CD226: NP\_006557.2, mouse CD226: NP\_848802.2, human CD96: NP\_937839.1, mouse CD96: NP\_115854.2, human TIGIT: NP\_115854.2, mouse TIGIT: NP\_001139797.1. doi:10.1371/journal.pone.0081942.g001

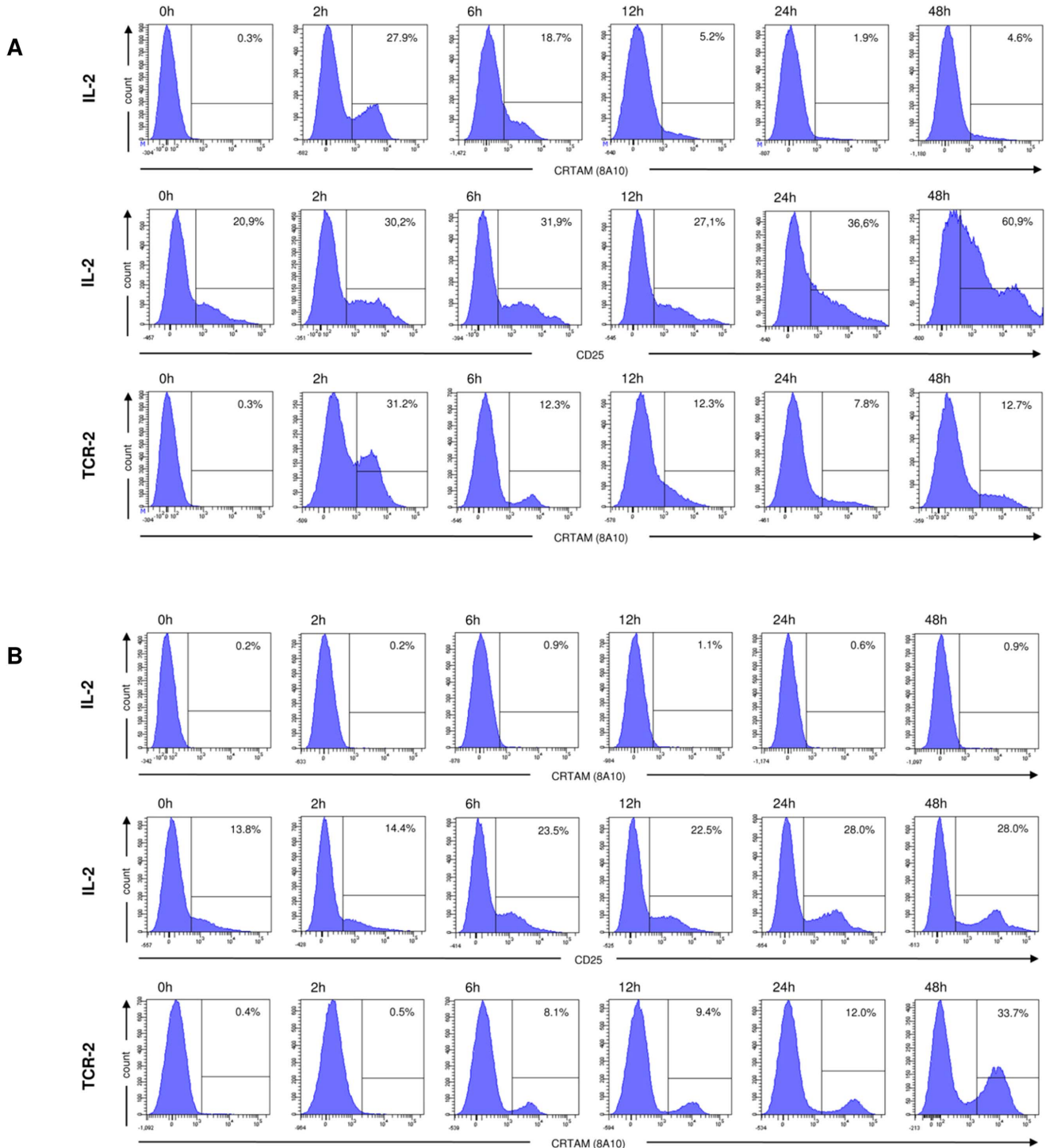
conserved sequence X/Tyr/Phe/Ile [31] that in humans is able to bind the PDZ motif of members of the MAGUK family, like Pals2 [32], CASK [33] and Dlg3 (MPP3) [34]. Furthermore it also

contains a binding motif for band 4.1 family proteins and thereby in humans it is known to recruit the tumor suppressor DAL-1, that connects Necl-2 to the cytoskeleton [35].

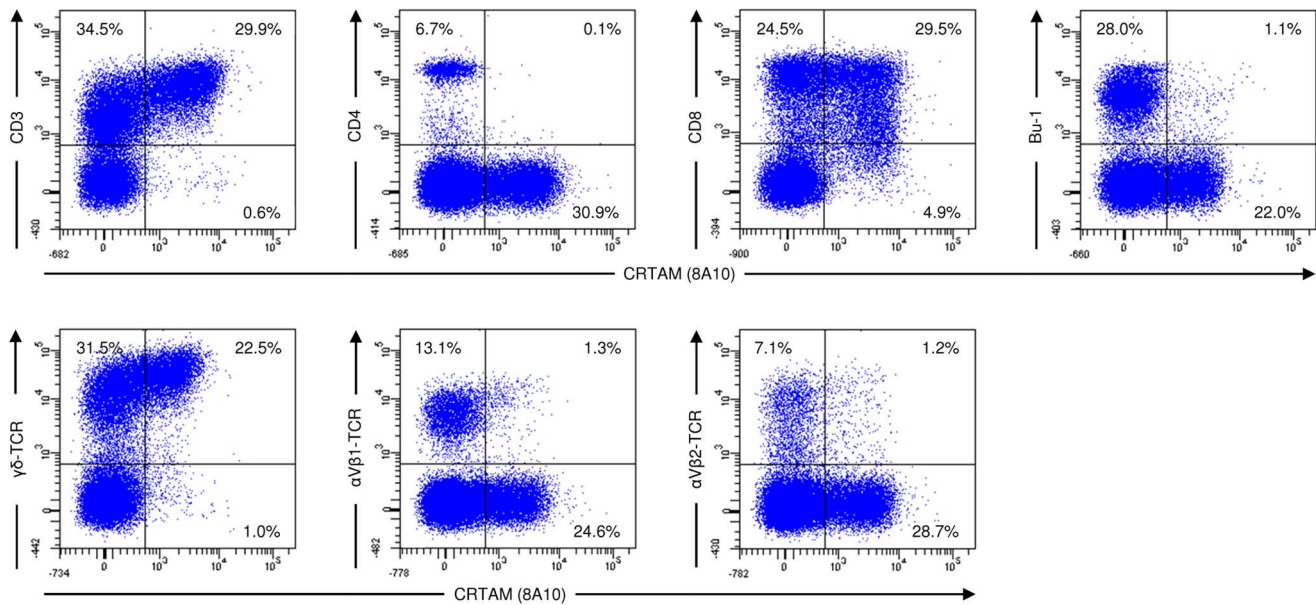




**Figure 2. Generation of a chicken CRTAM specific mab.** (A) Untransfected and CRTAM-FLAG transfected HEK 293 (upper panel) and BWZ.36 cells (lower panel) were stained with either anti-FLAG or 8A10 mab and analyzed by flow cytometry. (B) Freshly isolated cells of indicated tissues were stained with 8A10 mab. One of three independent experiments is shown. doi:10.1371/journal.pone.0081942.g002



**Figure 3. CRTAM expression upon activation.** Either splenocytes (A) or PBL (B) were stimulated with IL-2 (upper and middle panels) or plate bound anti-TCR-2 (lower panels) for the indicated time periods followed by immunofluorescence analysis using 8A10 mab and anti-CD25 mab (middle panels). The markers were set according to isotype matched negative controls and the percentage of positive cells is indicated. doi:10.1371/journal.pone.0081942.g003



**Figure 4. IL-2 stimulation leads to CRTAM upregulation on CD8 positive  $\gamma\delta$  T cells.** Splenocytes were stimulated with recombinant IL-2 for 2 h. Different cell subsets were analyzed by staining with CRTAM specific mab 8A10 in combination with mab specific for CD3, CD4, CD8, Bu1,  $\gamma\delta$ -TCR,  $\alpha V\beta 1$ -TCR and  $\alpha V\beta 2$ -TCR as indicated. The markers were set according to the isotype matched negative controls. The percentage of positive cells is indicated.

doi:10.1371/journal.pone.0081942.g004

### Chicken CRTAM binds to Necl-2

In order to study the potential interaction of CRTAM and Necl-2 we performed three independent assays. First we generated a soluble CRTAM protein by fusing the two CRTAM Ig domains to the human C<sub>H</sub>2, C<sub>H</sub>3 Ig domains. We tested the specific binding of the CRTAM-huIg fusion protein on a HEK 293 cell line stably transfected with the extracellular N-terminal FLAG-tagged domain of Necl-2 and on untransfected HEK 293 cells, respectively (Fig. 7A). Necl-2 was readily detected by anti-FLAG staining on the transfected HEK 293 cells (Fig. 7A, upper panel; MFI of 6885 as compared to MFI of 227 in the control). Next we stained the cells with the CRTAM-huIg fusion protein. As can be observed from Fig. 7A, the fusion protein stained the Necl-2 transfected cells, whereas an irrelevant fusion protein that also contained the human C<sub>H</sub>2, C<sub>H</sub>3 Ig domains did not react with the Necl-2 transfected cells (Fig. 7A, lower panel; MFI of 1423 as compared to MFI of 225 in the control). In a next step, we verified the binding capacity of chicken CRTAM and chicken Necl-2 employing the CRTAM transfected BWZ.36 cell line in a reporter assay. Since the CRTAM was epitope tagged, anti-FLAG stimulation served as a positive control and resulted in a strong induction of the intracellular NFAT promoter and  $\beta$ -galactosidase activity (Fig. 7B). The BWZ.36-CRTAM transfectants were either incubated with HEK 293 cells expressing an irrelevant receptor as a negative control or with the Necl-2 expressing HEK 293 cells. The Necl-2 expressing cells induced significant higher amounts of  $\beta$ -galactosidase activity as compared to the control (Fig. 7B). This interaction could be blocked by the addition of the soluble CRTAM-Ig fusion protein.

The statistical analysis revealed significant differences ( $p < 0.01667$ ) between all groups except the negative control compared to BWZ-CRTAM + 293-Necl-2 receptor ligand pair blocked by CRTAM-huIg and BWZ-CRTAM + 293-Necl-2 receptor ligand pair to BWZ-CRTAM + 293-Necl-2 receptor ligand pair blocked by 1:10 diluted CRTAM-huIg. As measure of

the variability we calculated subject coefficients of variation, which all were  $< 10\%$  indicative of a good reproducibility. The calculation of the minimum distance in between the value of the negative control and the value of the BWZ-CRTAM + 293-Necl-2 receptor ligand pair is based on the largest statistical variation. As a result we can assign, that the value of the BWZ-CRTAM + 293-Necl-2 receptor ligand pair has to exceed the value of the negative control more than 20% to ensure that the ligand binds to the receptor with a certainty of 95%. In this assay the value of BWZ-CRTAM + 293-Necl-2 receptor ligand pair exceeds more than 30% compared to the value of the mock-transfected negative control.

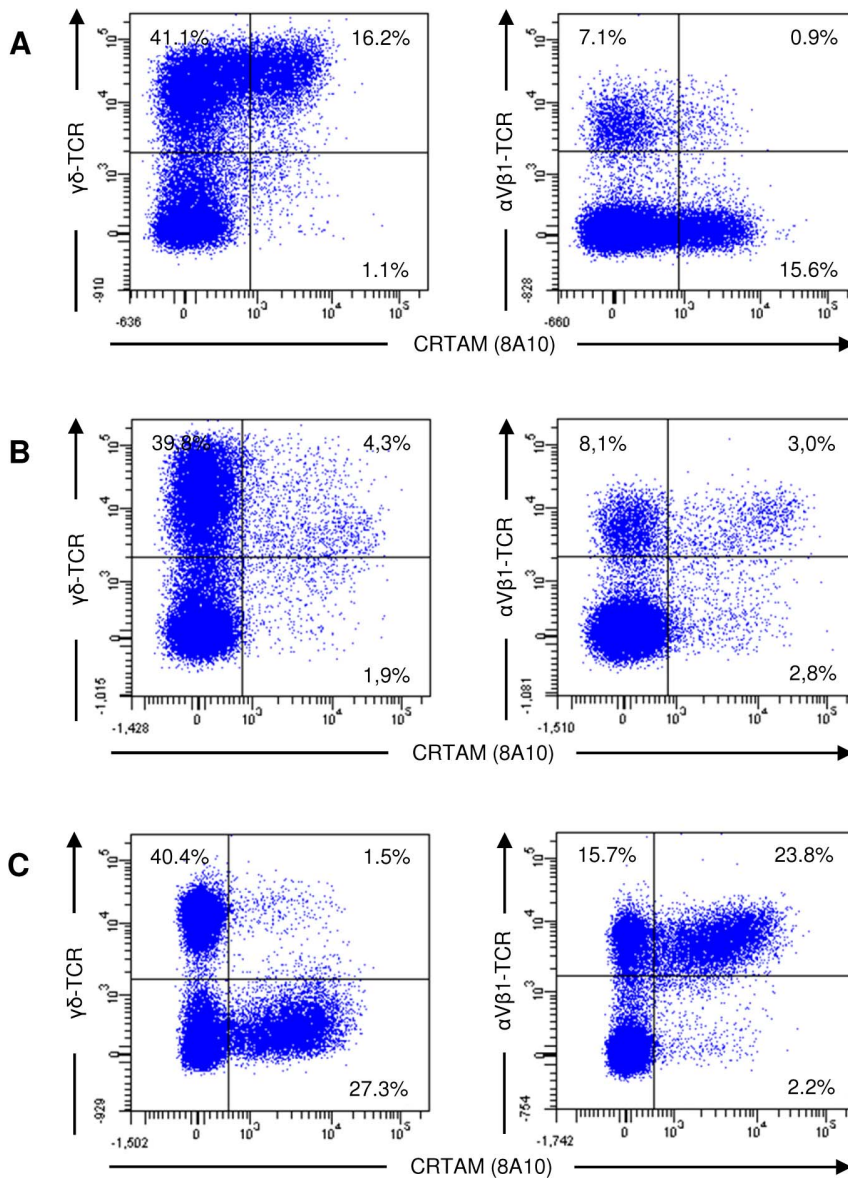
In a further experiment we coinubated labeled BWZ.36-CRTAM, or control BWZ.36 cells with 293-Necl-2 cells for 2 h at 37°C and measured the formation of conjugates by flow cytometry (Fig. 7C) We observed abundant conjugate formation between BWZ.36-CRTAM and 293-Necl-2 cells (Fig. 7C, middle panel) but not between untransfected BWZ.36 (Fig. 7C, upper panel) or mock transfected BWZ.36 (data not shown) and 293 Necl-2 cells. Preincubation of BWZ.36-CRTAM cells with 8A10 mab almost completely blocked the conjugate formation (Fig. 7C, lower panel), whereas preincubation of mock transfected BWZ.36 cells with the 8A10 mab did not show any effect (data not shown).

In conclusion, three independent assays have proved the CRTAM - Necl-2 interaction.

### Discussion

The chicken cTADS gene was initially identified in 2000 as a novel Ig-like molecule with similarity to several proteins mediating adhesion that is upregulated on activated thymocytes and splenocytes [10]. The mammalian CRTAM gene was identified in 2000, too, thus a direct assignment of CRTAM and cTADS was most likely precluded due to the simultaneous submission [3]. In 2004, a study initiated to establish a link between innate immunity in the urochordate *Ciona intestinalis* and adaptive immunity receptors of the IgSF family pointed out the relationship of





**Figure 5. CRTAM expression is induced on splenic  $\gamma\delta$  T cells and blood  $\alpha\beta$  T cells at different time points following TCR-2 stimulation.** Splenocytes (A, B) and PBL (C) were stimulated with plate bound anti-TCR-2 for 2 h (A) and 48 h (B, C) followed by analysis with mab specific for TCR- $\gamma\delta$  or TCR- $\alpha\beta$ 1 in combination with 8A10 mab. The markers were set according to the isotype matched negative controls and the percentage of positive cells is indicated. One of three independent experiments is shown. doi:10.1371/journal.pone.0081942.g005

mammalian CRTAM and cTADS [36]. It is of interest that CRTAM homologues seem to have distantly related homologues not only in non-mammalian vertebrates but even in *Drosophila*, where the BEAT family shares similar structural features such as an identical domain organization [36]. In *Ciona intestinalis*, an ancestral gene cluster represented on chromosomes 4 and 10 founded four paralogous regions by two whole genome duplications [37]. Comparative studies have identified the chicken chromosomes 1, 4, 24 and 31 as these paralogous regions and indeed several important IgSF families have been located to these chromosomes, such as the CD200 family on chromosome 1, the chicken leucocyte receptor cluster (LRC) on chromosome 31, and CRTAM on chromosome 24 [12,16,38].

It is interesting to note that both chicken Necl-2 and CRTAM have a difference in their genomic organization. There are two

additional exons coding for residues located between the membrane proximal Ig domains and the transmembrane domains. It is not evident, why this region has been condensed in the mammalian molecules and what the functional significance of an extended membrane proximal region is. In a recent report, a novel computational method was used to demonstrate the close relationship of CRTAM and the nectin-like family with the conclusion that both receptors belong to the nectin-like family [39]. The finding that both genes share the additional exons in galliformes is supporting this notion. A further unifying theme for CRTAM and other nectins is their expression on leukocytes and on cells of the nervous system such as Purkinje cells in the cerebellum [40]. The analysis of CRTAM expression in the brain goes beyond the scope of this report, but will be examined in

I	ggNecl-2 SP huNecl-2 SP	MDMCFNVE SDGHGHVL QHGVSDGD- - - - - VLHHGHVLQR MASVVLPSGSQCAAAAAAAPPGLRLRLLLLLFSAALPT	34 41
II	ggNecl-2 Ig1 huNecl-2 Ig1	..DGQNLITEDVTVVEGDVATISCRVKNSSDSSVIQLLNPNRQTIYFRDFR GDGQNLFTTKDVTVIEGEVATISCVKNSSDSSVIQLLNPNRQTIYFRDFR	82 90
III	ggNecl-2 Ig1 huNecl-2 Ig1	PLKDSRFQLVNFSSSELRVSLTNVSI SDEGRYFCQLYTDPPQE IYTTITVL PLKDSRFQLLNFSSSELKVSLTNVSI SDEGRYFCQLYTDPPQESYTTITVL	133 141
IV	ggNecl-2 Ig2 huNecl-2 Ig2	VPPRNLVIDIQKEIAVEGEEIELNCTAMASRPATTIRWFKGNKELT VPPRNLVIDIQKDTAVEGEEIEVNCTAMASKPATTIRWFKGNTELK	179 187
V	ggNecl-2 Ig2 huNecl-2 Ig2	GKSEVEQWFDMYTVTSQLLLKVGREDDGVPV ICLVDHPAVK- DLQTQRYLEV GKSEVEEWSDMYTVTSQLMLKVHKEDDGVPV I CQVEHPAVTGNLQTQRYLEVQ	231 240
VI	ggNecl-2 Ig-like huNecl-2 Ig-like	YKPVQVRSQNYPVQGLTREGPELELTCAAFGKPK YKPVQVHIQMTYPLQGLTREGDALELTCEAIGKPK	265 274
VII	ggNecl-2 Ig-like huNecl-2 Ig-like	PTDMRWLRVDDEMPQHVVVSGSNLLISNLTNKTNGTYRCEASNAVVGKSHADYMLFVY PVMVTWRVDDEMPQHAVLSGPNLFINNLTNKTNGTYRCEASNIVGKAHSDYMLYVY	322 331
VIII	ggNecl-2 CP huNecl-2 CP	DPPTTI PPPTTTTTTTTTTIPPTIT DPPTTI PPPTTTTTTTTTTITTTITLTIIT	346 359
IX	ggNecl-2 CP huNecl-2 CP	DTTATTEPAVH -----	357
X	ggNecl-2 CP huNecl-2 CP	GFTQLPNSAEELDYGDLS -----	375
XI	ggNecl-2 TM huNecl-2 TM	DSRAGEEGA I RSVDAHVVGGVVAVVVFAMLCLL I LGRYFARHK DSRAGEEGS I RAVDAHVI GGVVAVVVFAMLCLL I LGRYFARHK	419 403
XII	ggNecl-2 CY huNecl-2 CY	GTYFTHEAKGADDAADADTA I INAEQQNNSEKK EYFI GTYFTHEAKGADDAADADTA I INAEQQNNSEKK EYFI	458 442

**Figure 6. Sequence alignment of chicken (gg) and human (hu) Necl-2.** Ig-Domains (Ig1, Ig2, Ig-like), connecting peptide (CP) and cytoplasmic domains (CY) as well as 4.1 (shaded) and PDZ-binding motifs (framed) are indicated. Identical decoration was used as in Fig. 1. Accession numbers: chicken XP\_417901, human NP\_055148. doi:10.1371/journal.pone.0081942.g006

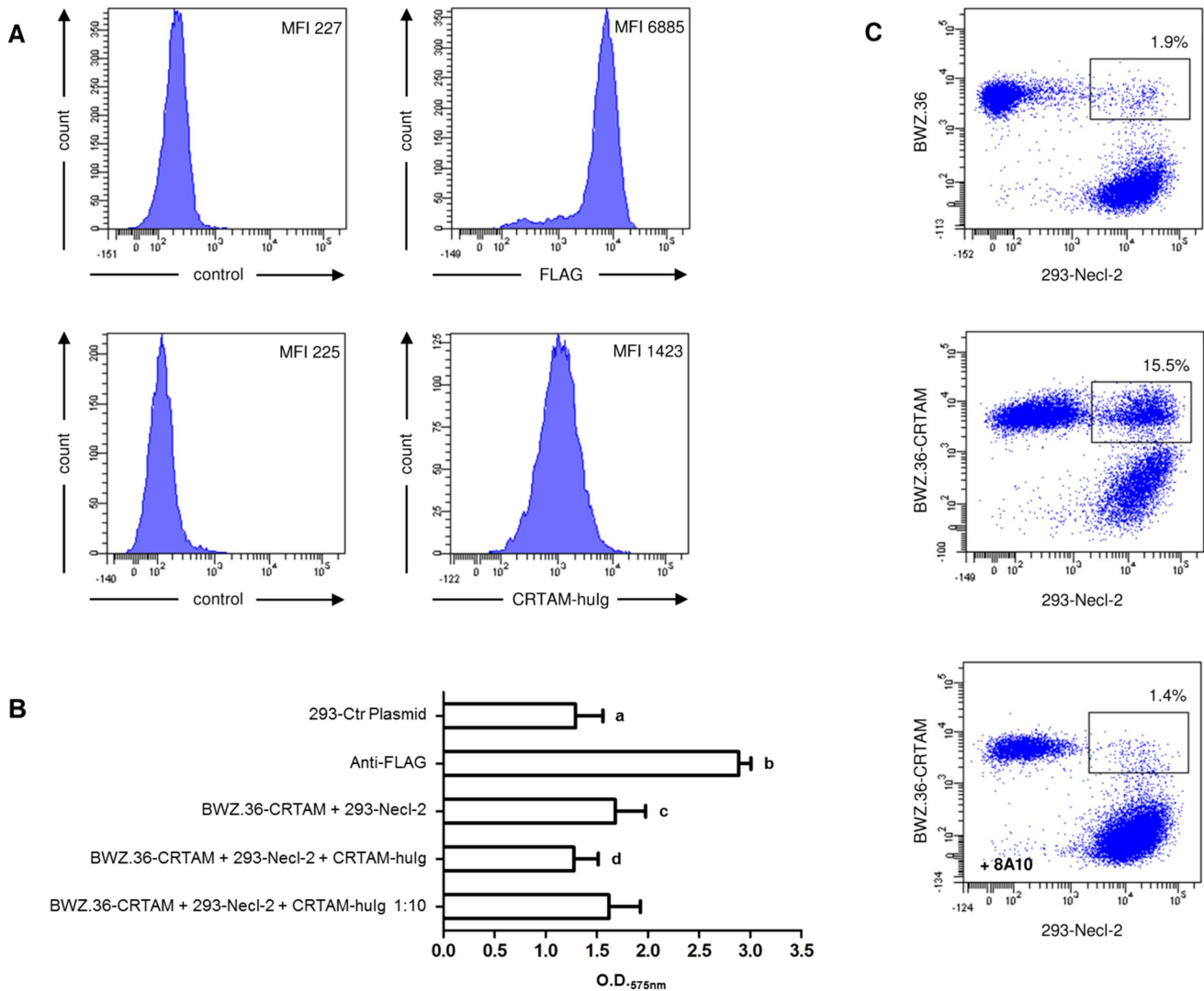
future studies. Altogether, CRTAM is a well conserved molecule that serves several functions in the immune and nervous system.

In order to further explore chicken CRTAM on leukocytes we have generated a specific mab. Our inability to detect CRTAM on freshly isolated cells corresponds well with mammalian data on CRTAM expression. Several activation agents such as mitogens, TCR crosslinking and IL-2 rapidly upregulated chicken CRTAM. One intriguing aspect is the fast CRTAM upregulation within 2 h of IL-2 or TCR stimulation of splenocytes. This is in good agreement with the data reported on the mRNA expression of cTADS [10]. Since mRNA is detectable very early after cellular activation, it is likely to resemble de novo protein biosynthesis of CRTAM rather than surface expression of preformed receptor proteins stored intracellularly as reported for other molecules such as CD300a [41].

Interestingly, this early CRTAM upregulation on splenocytes by IL-2 was mainly detectable on a  $\gamma\delta$  T cell subset. IL-2 stimulation of PBL failed to induce CRTAM, although the cytokine was able

to activate cells as judged by the increase of CD25 expression. In contrast, TCR crosslinking did induce CRTAM expression on PBL, but at later time points with a maximum after 48 h of stimulation and mainly on  $\alpha\beta$  T cells.

Taken together, there are two pronounced differences in CRTAM upregulation between  $\gamma\delta$  and  $\alpha\beta$  T cells: firstly, a rapid upregulation on  $\gamma\delta$  T cells upon stimulation and a delayed CRTAM expression on  $\alpha\beta$  T cells reaching a maximum within 48 h and secondly an inability of blood derived  $\gamma\delta$  T cells to express CRTAM in contrast to splenic  $\gamma\delta$  T cells. Splenic and blood derived  $\gamma\delta$  T cells also differ in their expression of various other molecules, such that blood  $\gamma\delta$  T cells lack CD6 and display only low levels of CD5 [42–44]. Thus, while blood  $\gamma\delta$  T cells seem to be refractory to activation, a splenic  $\gamma\delta$  T cell subset can be readily activated and CRTAM serves as an early activation antigen on these cells. In this regard it is interesting that another rich source of  $\gamma\delta$  T cells is the IEL population, however, we were not able to detect CRTAM on resting or activated IEL. This



**Figure 7. Chicken CRTAM binds to Necl-2.** (A) The chicken Necl-2-FLAG transfected HEK 293 cells were stained with either an isotype matched control or anti-FLAG mab (upper panel). The CRTAM-hulg fusion protein was tested on the same cell line (right histogram, lower panel) and compared to a control staining of the Necl-2-FLAG transfected cells with an irrelevant hulg fusion protein (left histogram, lower panel). Mean fluorescence intensity (MFI) is indicated. (B) A reporter assay as described in the methods section was initiated to analyze the binding of CRTAM and Necl-2. Mean  $\pm$  SD of twelve independent assays is shown. Lower case letters denote significant differences ( $p < 0.01667$ ) of each denoted group compared with following groups: (a) anti-FLAG positive control ( $p < 0.001$ ), BWZ-CRTAM + 293-Necl-2 receptor ligand pair ( $p < 0.001$ ) and BWZ-CRTAM + 293-Necl-2 receptor ligand pair blocked with 1:10 diluted CRTAM-hulg ( $p < 0.001$ ), (b) all other treatment groups, (c) BWZ-CRTAM + 293-Necl-2 receptor ligand pair blocked with undiluted CRTAM-hulg ( $p < 0.001$ ), (d) BWZ-CRTAM + 293-Necl-2 receptor ligand pair blocked with 1:10 diluted CRTAM-hulg ( $p < 0.001$ ). (C) For conjugate assays, BWZ.36 cells and CRTAM transfected BWZ.36 cells were labeled with PKH67, whereas 293-Necl-2 cells were labeled with Vybrant<sup>®</sup> DiD. 293-Necl-2 transfectants only formed conjugates with CRTAM transfected (middle panel) but not with untransfected BWZ.36 cells (upper panel). Preincubation of the CRTAM transfected BWZ.36 cells with 8A10 mab prior to coincubation with 293-Necl-2 cells almost completely reduced conjugate formation (lower panel). Percentage of conjugates is indicated. One of three independent experiments is shown.  
doi:10.1371/journal.pone.0081942.g007

underscores that IEL harbors yet another  $\gamma\delta$  T cell subset, that is also defined by its unique expression of CD8 $\alpha\alpha$  homodimers instead of CD8 $\alpha\beta$  heterodimers [45].

Mammalian CRTAM is also detectable on NK cells. In the adult chicken, NK cell frequencies are either low or undetectable in several tissues such as PBL or spleen, but the intestinal epithelium harbors a high frequency of NK cells [46,47]. This IEL population did not express CRTAM whether on the resting cell population, nor were we able to increase CRTAM expression upon stimulation of IEL with either IL-2, TCR-2 crosslinking, or PMA/Ca-ionophore (data not shown).

A further interesting result of our study is the early upregulation of CRTAM on  $\gamma\delta$  T cells following stimulation of  $\alpha\beta$  T cells with TCR crosslinking. We can exclude a direct stimulation, since multiple studies have demonstrated that the TCR-2 mab is specifically recognizing  $\alpha\beta$ 1 T cells. For instance, staining with the TCR-1 and TCR-2 mab detects non-overlapping T cell subsets [48] and immunoprecipitation with these mab also shows distinct biochemical features [49]. Therefore it could be speculated, that stimulation of  $\alpha\beta$  T cells leads to either a cognate or non-cognate interaction of  $\alpha\beta$  and  $\gamma\delta$  T cells that induces CRTAM on  $\gamma\delta$  T cells. IL-2 secreted by  $\alpha\beta$  T cells may well be involved in this

process, since IL-2 by itself causes CRTAM expression on  $\gamma\delta$  T cells. This observation is in line with earlier reports showing that  $\gamma\delta$  T cells in the chicken require either  $\alpha\beta$  T cells or exogenous cytokines as growth promoting factors [50]. Since assays for the detection of chicken IL-2 are not available, we performed an IL-2 specific PCR on either resting or TCR-2 stimulated splenocytes. In this experiment a strong upregulation of IL-2 mRNA is observed (Fig. S1, Text S1). The mechanism of CRTAM induction on  $\gamma\delta$  T cells following TCR-2 crosslinking needs to be studied in greater detail in future experiments. This will also include an analysis of CD25 expression on resting chicken T cells, which has so far not been performed comprehensively.

We have also been able to confirm Necl-2 as ligand for CRTAM. In mammals, Necl-2 is expressed on the basolateral membrane of epithelial cells and on certain tumor cells [2,7]. The interaction of CRTAM and Necl-2 leads to IFN- $\gamma$  secretion and T cell stimulation as well as secretion of IL-22 [2]. It will be of importance to clarify if similar reactions can be induced in the chicken. Likewise, the recent observation that CRTAM engagement on V $\gamma$ 9V $\delta$ 2 T cells triggers cell death of  $\gamma\delta$  T cells could indicate that the upregulation of CRTAM on splenic  $\gamma\delta$  T cells in the chicken is a sign of terminal differentiation that may finally result in apoptosis if CRTAM binds to Necl-2 [8].

## References

- Chan CJ, Andrews DM, Smyth MJ (2012) Receptors that interact with nectin and nectin-like proteins in the immunosurveillance and immunotherapy of cancer. *Curr Opin Immunol* 24: 246–251.
- Fuchs A, Colonna M (2006) The role of NK cell recognition of nectin and nectin-like proteins in tumor immunosurveillance. *Semin Cancer Biol* 16: 359–366.
- Kennedy J, Vicari AP, Saylor V, Zurawski SM, Copeland NG, et al. (2000) A molecular analysis of NKT cells: identification of a class-I restricted T cell-associated molecule (CRTAM). *J Leukoc Biol* 67: 725–734.
- Boles KS, Barchet W, Diacovo T, Cella M, Colonna M (2005) The tumor suppressor TSLC1/NECL-2 triggers NK-cell and CD8+ T-cell responses through the cell-surface receptor CRTAM. *Blood* 106: 779–786.
- Galibert L, Diemer GS, Liu Z, Johnson RS, Smith JL, et al. (2005) Nectin-like protein 2 defines a subset of T-cell zone dendritic cells and is a ligand for class-I restricted T-cell-associated molecule. *J Biol Chem* 280: 21955–21964.
- Arase N, Takeuchi A, Unno M, Hirano S, Yokosuka T, et al. (2005) Heterotypic interaction of CRTAM with Necl2 induces cell adhesion on activated NK cells and CD8+ T cells. *Int Immunol* 17: 1227–1237.
- Garay E, Patino-Lopez G, Islas S, Alarcon L, Canche-Pool E, et al. (2010) CRTAM: A molecule involved in epithelial cell adhesion. *J Cell Biochem* 111: 111–122.
- Dessarthe B, Theured A, Latouche JB, Cabillic F, Drouet A, et al. (2013) CRTAM receptor engagement by Necl-2 on tumor cells triggers cell death of activated V $\gamma$ 9V $\delta$ 2 T cells. *J Immunol* 190: 4868–4876.
- Diaz-Coranguéz M, Segovia J, Lopez-Ornelas A, Puerta-Guardo H, Ludert J, et al. (2013) Transmigration of neural stem cells across the blood brain barrier induced by glioma cells. *PLoS One* 8: e60655.
- Ruble DM, Foster DN (2000) Molecular characterization of a new member of the immunoglobulin superfamily that potentially functions in T-cell activation and development. *Immunogenetics* 51: 347–357.
- Straub C, Neulen ML, Sperling B, Windau K, Zechmann M, et al. (2013) Chicken NK cell receptors. *Dev Comp Immunol*: In Press.
- Viertlboeck BC, Gobel TW (2011) The chicken leukocyte receptor cluster. *Vet Immunol Immunopathol* 144: 1–10.
- Viertlboeck BC, Schmitt R, Göbel TW (2006) The chicken immunoregulatory receptor families SIRP, TREM, and CMRF35/CD300L. *Immunogenetics* 58: 180–190.
- Viertlboeck BC, Schweinsberg S, Hanczaruk MA, Schmitt R, Du Pasquier L, et al. (2007) The chicken leukocyte receptor complex encodes a primordial, activating, high-affinity IgY Fc receptor. *Proc Natl Acad Sci USA* 104: 11718–11723.
- Viertlboeck BC, Wortmann A, Schmitt R, Plachy J, Göbel TW (2008) Chicken C-type lectin-like receptor B-NK, expressed on NK and T cell subsets, binds to a ligand on activated splenocytes. *Mol Immunol* 45: 1398–1404.
- Viertlboeck BC, Habermann FA, Schmitt R, Groenen MA, Du Pasquier L, et al. (2005) The chicken leukocyte receptor complex: a highly diverse multigene family encoding at least six structurally distinct receptor types. *J Immunol* 175: 385–393.
- Tamura K, Peterson D, Peterson N, Stecher G, Nei M, et al. (2011) MEGA5: molecular evolutionary genetics analysis using maximum likelihood, evolutionary distance, and maximum parsimony methods. *Mol Biol Evol* 28: 2731–2739.
- DuBridge RB, Tang P, Hsia HC, Leong PM, Miller JH, et al. (1987) Analysis of mutation in human cells by using an Epstein-Barr virus shuttle system. *Mol Cell Biol* 7: 379–387.
- Karttunen J, Shastrri N (1991) Measurement of ligand-induced activation in single viable T cells using the lacZ reporter gene. *Proc Natl Acad Sci USA* 88: 3972–3976.
- Pürzel J, Schmitt R, Viertlboeck BC, Göbel TW (2009) Chicken IgY binds its receptor at the CH3/CH4 interface similarly as the human IgA: Fc alpha RI interaction. *J Immunol* 183: 4554–4559.
- Viertlboeck BC, Crooijmans RP, Groenen MA, Göbel TW (2004) Chicken Ig-Like Receptor B2, a Member of a Multigene Family, Is Mainly Expressed on B Lymphocytes, Recruits Both Src Homology 2 Domain Containing Protein Tyrosine Phosphatase (SHP)-1 and SHP-2, and Inhibits Proliferation. *J Immunol* 173: 7385–7393.
- Viertlboeck BC, Göbel TW (2007) Chicken thrombocytes express the CD51/CD61 integrin. *Vet Immunol Immunopathol* 119: 137–141.
- Göbel TW (2000) Isolation and analysis of natural killer cells in chickens. *Methods Mol Biol* 121: 337–345.
- Göbel TW, Schneider K, Schaerer B, Mejri I, Puehler F, et al. (2003) IL-18 stimulates the proliferation and IFN-gamma release of CD4+ T cells in the chicken: conservation of a Th1-like system in a nonmammalian species. *J Immunol* 171: 1809–1815.
- Chen CL, Ager LL, Gartland GL, Cooper MD (1986) Identification of a T3/T cell receptor complex in chickens. *J Exp Med* 164: 375–380.
- Chan MM, Chen CL, Ager LL, Cooper MD (1988) Identification of the avian homologues of mammalian CD4 and CD8 antigens. *J Immunol* 140: 2133–2138.
- Rothwell CJ, Vervelde L, Davison TF (1996) Identification of chicken Bu-1 alloantigens using the monoclonal antibody AV20. *Vet Immunol Immunopathol* 55: 225–234.
- Sowder JT, Chen CL, Ager LL, Chan MM, Cooper MD (1988) A large subpopulation of avian T cells express a homologue of the mammalian T gamma/delta receptor. *J Exp Med* 167: 315–322.
- Cihak J, Ziegler-Heitbrock HW, Trainer H, Schraner I, Merckenschlager M, et al. (1988) Characterization and functional properties of a novel monoclonal antibody which identifies a T cell receptor in chickens. *Eur J Immunol* 18: 533–537.
- Char D, Sanchez P, Chen CL, Bucy RP, Cooper MD (1990) A third sublineage of avian T cells can be identified with a T cell receptor-3-specific antibody. *J Immunol* 145: 3547–3555.
- Hung AY, Sheng M (2002) PDZ domains: structural modules for protein complex assembly. *J Biol Chem* 277: 5699–5702.
- Shingai T, Ikeda W, Kakunaga S, Morimoto K, Takekuni K, et al. (2003) Implications of nectin-like molecule-2/IGSF4/RA175/SgIGSF/TSLC1/SyncCAM1 in cell-cell adhesion and transmembrane protein localization in epithelial cells. *J Biol Chem* 278: 35421–35427.

In conclusion, this characterization of chicken CRTAM expression revealed that CRTAM belongs to a highly conserved receptor family interacting with nectins and that it resembles an activation antigen differentially regulated on splenic versus blood  $\alpha\beta$  and  $\gamma\delta$  T cells.

## Supporting Information

**Text S1** Supplementary Materials and Methods. (TIF)

## Acknowledgments

We would like to thank B. Sperling, B. Schaerer and M. Kohn for expert technical assistance and PD Dr. S. Härtle for continuous support during cytometric analyses.

## Author Contributions

Conceived and designed the experiments: TWG. Performed the experiments: MZ. Analyzed the data: MZ SR TWG. Contributed reagents/materials/analysis tools: SR. Wrote the paper: MZ TWG.



33. Biederer T, Sara Y, Mozhayeva M, Atasoy D, Liu X, et al. (2002) SynCAM, a synaptic adhesion molecule that drives synapse assembly. *Science* 297: 1525–1531.
34. Fukuhara H, Masuda M, Yageta M, Fukami T, Kuramochi M, et al. (2003) Association of a lung tumor suppressor TSLC1 with MPP3, a human homologue of *Drosophila* tumor suppressor Dlg. *Oncogene* 22: 6160–6165.
35. Yageta M, Kuramochi M, Masuda M, Fukami T, Fukuhara H, et al. (2002) Direct association of TSLC1 and DAL-1, two distinct tumor suppressor proteins in lung cancer. *Cancer Res* 62: 5129–5133.
36. Du Pasquier L (2004) Innate immunity in early chordates and the appearance of adaptive immunity. *C R Biol* 327: 591–601.
37. Zucchetti I, De Santis R, Gruseca S, Pontarotti P, Du Pasquier L (2009) Origin and evolution of the vertebrate leukocyte receptors: the lesson from tunicates. *Immunogenetics* 61: 463–481.
38. Viertlboeck BC, Hanczaruk MA, Schmitt FC, Schmitt R, Göbel TW (2008) Characterization of the chicken CD200 receptor family. *Mol Immunol* 45: 2097–2105.
39. Rubinstein R, Ramagopal UA, Nathenson SG, Almo SC, Fiser A (2013) Functional classification of immune regulatory proteins. *Structure* 21: 766–776.
40. Patino-Lopez G, Hevezi P, Lee J, Willhite D, Verge GM, et al. (2006) Human class-I restricted T cell associated molecule is highly expressed in the cerebellum and is a marker for activated NKT and CD8+ T lymphocytes. *J Neuroimmunol* 171: 145–155.
41. Alvarez Y, Tang X, Coligan JE, Borrego F (2008) The CD300a (IRp60) inhibitory receptor is rapidly up-regulated on human neutrophils in response to inflammatory stimuli and modulates CD32a (FcγRIIa) mediated signaling. *Mol Immunol* 45: 253–258.
42. Göbel TW, Chen CH, Cooper MD (1996) Expression of an avian CD6 candidate is restricted to ab T cells, splenic CD8<sup>+</sup> gd T cells and embryonic natural killer cells. *Eur J Immunol* 26: 1743–1747.
43. Chen CH, Six A, Kubota T, Tsuji S, Kong FK, et al. (1996) T cell receptors and T cell development. *Current Topics in Microbiology and Immunology* 212: 37–53.
44. Koskinen R, Gobel TW, Tregaskes CA, Young JR, Vainio O (1998) The structure of avian CD5 implies a conserved function. *J Immunol* 160: 4943–4950.
45. Tregaskes CA, Kong FK, Paramithiotis E, Chen CL, Ratcliffe MJ, et al. (1995) Identification and analysis of the expression of CD8 alpha beta and CD8 alpha alpha isoforms in chickens reveals a major TCR-gamma delta CD8 alpha beta subset of intestinal intraepithelial lymphocytes. *J Immunol* 154: 4485–4494.
46. Göbel TW, Kaspers B, Stangassinger M (2001) NK and T cells constitute two major, functionally distinct intestinal epithelial lymphocyte subsets in the chicken. *Int Immunol* 13: 757–762.
47. Rogers SL, Viertlboeck BC, Göbel TW, Kaufman J (2008) Avian NK activities, cells and receptors. *Semin Immunol* 20: 353–360.
48. Chen CL, Cihak J, Losch U, Cooper MD (1988) Differential expression of two T cell receptors, TcR1 and TcR2, on chicken lymphocytes. *Eur J Immunol* 18: 539–543.
49. Chen CH, Sowder JT, Lahti JM, Cihak J, Losch U, et al. (1989) TCR3: a third T-cell receptor in the chicken. *Proc Natl Acad Sci U S A* 86: 2351–2355.
50. Kasahara Y, Chen CH, Cooper MD (1993) Growth requirements for avian gamma delta T cells include exogenous cytokines, receptor ligation and in vivo priming. *Eur J Immunol* 23: 2230–2236.