



# Prognostic Value of Restaging F-18 Fluorodeoxyglucose Positron Emission Tomography/Computed Tomography to Predict 3-Year Post-Recurrence Survival in Patients with Recurrent Gastric Cancer after Curative Resection

Sung Hoon Kim, MD<sup>1,2</sup>, Bong-Il Song, MD<sup>2</sup>, Hae Won Kim, MD<sup>2</sup>, Kyoung Sook Won, MD<sup>2</sup>, Young-Gil Son, MD<sup>3</sup>, Seung Wan Ryu, MD<sup>3</sup>

<sup>1</sup>Department of Nuclear Medicine, Keimyung University Daegu Dongsan Hospital, Daegu, Korea; Departments of <sup>2</sup>Nuclear Medicine and <sup>3</sup>Surgery, Keimyung University Dongsan Hospital, Keimyung University School of Medicine, Daegu, Korea

**Objective:** The aim of this study was to investigate the prognostic value of the maximum standardized uptake value (SUV<sub>max</sub>) measured while restaging with F-18 fluorodeoxyglucose (<sup>18</sup>F-FDG) positron emission tomography/computed tomography (PET/CT) to predict the 3-year post-recurrence survival (PRS) in patients with recurrent gastric cancer after curative surgical resection.

**Materials and Methods:** In total, 47 patients with recurrent gastric cancer after curative resection who underwent restaging with <sup>18</sup>F-FDG PET/CT were included. For the semiquantitative analysis, SUV<sub>max</sub> was measured over the visually discernable <sup>18</sup>F-FDG-avid recurrent lesions. Cox proportional-hazards regression models were used to predict the 3-year PRS. Differences in 3-year PRS were assessed with the Kaplan–Meier analysis.

**Results:** Thirty-nine of the 47 patients (83%) expired within 3 years after recurrence in the median follow-up period of 30.3 months. In the multivariate analysis, SUV<sub>max</sub> ( $p = 0.012$ ), weight loss ( $p = 0.025$ ), and neutrophil count ( $p = 0.006$ ) were significant prognostic factors for 3-year PRS. The Kaplan–Meier curves demonstrated significantly poor 3-year PRS in patients with SUV<sub>max</sub> > 5.1 than in those with SUV<sub>max</sub> ≤ 5.1 (3-year PRS rate, 3.5% vs. 38.9%,  $p < 0.001$ ).

**Conclusion:** High SUV<sub>max</sub> on restaging with <sup>18</sup>F-FDG PET/CT is a poor prognostic factor for 3-year PRS. It may strengthen the role of <sup>18</sup>F-FDG PET/CT in further stratifying the prognosis of recurrent gastric cancer.

**Keywords:** Gastric cancer; PET/CT; FDG; Survival; Recurrence

## INTRODUCTION

Gastric cancer is the sixth most common malignancy and the second leading cause of cancer deaths worldwide (1). Although the 5 year-overall survival (OS) rate is 62–71% in patients treated via surgery, a significant proportion of patients develop recurrences following resection (2, 3). Approximately 1/3 of patients (35–42%) still relapse after

curative resection and adjuvant chemotherapy in Asian countries (3, 4). Hence, identifying relevant risk factors for patients with recurrent gastric cancer is crucial for predicting prognoses and future management strategies.

After experiencing a recurrence, most patients with gastric cancer have a poor prognosis and the majority dies within 3 years (4, 5). However, post-recurrence survival (PRS) time is variable among individual patients. Currently,

**Received:** September 6, 2019 **Revised:** February 19, 2020 **Accepted:** February 22, 2020

This study was supported by the National Research Foundation of Korea (NRF) grant funded by the Korea Government (MSIP) (No. 2014R1A5A2010008 and No. 2017R1C1B5076640).

**Corresponding author:** Bong-Il Song, MD, Department of Nuclear Medicine, Keimyung University Dongsan Hospital, Keimyung University School of Medicine, 1095 Dalgubeol-daero, Dalseo-gu, Daegu 42601, Korea.

• Tel: (8253) 258-7956 • Fax: (8253) 258-4047 • E-mail: [song@dsmc.or.kr](mailto:song@dsmc.or.kr)

This is an Open Access article distributed under the terms of the Creative Commons Attribution Non-Commercial License (<https://creativecommons.org/licenses/by-nc/4.0>) which permits unrestricted non-commercial use, distribution, and reproduction in any medium, provided the original work is properly cited.

most studies have dealt with prognostic factors for OS or disease-free survival (DFS) in gastric cancer; thus, many clinicopathological parameters including age, sex, histology, number of metastatic and retrieved lymph nodes (LNs), inflammatory markers, or nutritional risks beyond the tumor-node-metastasis (TNM) stage are currently available for predicting survival outcomes (6-9). However, few studies to date have focused on PRS in patients with recurrent gastric cancer and little is known about predictive factors that affect a patient's prognosis after recurrence.

Positron emission tomography/computed tomography (PET/CT) with F-18 fluorodeoxyglucose ( $^{18}\text{F}$ -FDG) has been widely used for staging, evaluating treatment response, and detecting disease recurrence in gastric cancer (10). Notably,  $^{18}\text{F}$ -FDG uptake reflects the biological aggressiveness of gastric cancer; increases have been found to be an independent prognostic marker for patient outcomes in terms of OS or DFS (11). Several studies demonstrated the prognostic value of semi-quantitative  $^{18}\text{F}$ -FDG uptake of the primary tumor or metastatic LN in patients with various stages of gastric cancer (12-15). However, it remains uncertain whether the glycolytic activity of recurrent tumors could provide prognostic information regarding recurrent gastric cancer. Although diagnostic value of surveillance or restaging using  $^{18}\text{F}$ -FDG PET/CT has been reported by previous studies (16-18), there are no reports focused on metabolic activity derived from the  $^{18}\text{F}$ -FDG PET/CT restaging scan as a prognostic marker for PRS in patients with recurrent gastric cancer.

Therefore, we aimed to investigate the prognostic impact of the maximum standardized uptake value ( $\text{SUV}_{\text{max}}$ ) measured by  $^{18}\text{F}$ -FDG PET/CT restaging scans to predict 3-year PRS in patients with recurrent gastric cancer after curative surgical resection.

## MATERIALS AND METHODS

This study followed the medical research protocols and ethical guidelines laid down by the World Medical Association's Declaration of Helsinki. The retrospective study protocol was approved by the Institutional Review Board (#2018-06-028), and the need for written informed consent was waived.

### Patients

Study participants were selected from 1101 patients with stomach cancer who received potentially curative

gastrectomy at our institution between January 2008 and December 2011. The exclusion criteria were non-curative surgery (microscopic or macroscopic residual disease [R1-R2] after resection), the presence of distant metastasis, the reception of any other treatment prior to surgery, a history of previous malignancy, the presence of synchronous malignancy, no recurrence during follow-up, or the absence of  $^{18}\text{F}$ -FDG PET/CT restaging scans. Finally, 47 patients with recurrent gastric cancer who underwent  $^{18}\text{F}$ -FDG PET/CT restaging scans were enrolled in this study.

All patients received total or subtotal gastrectomy along with D2 lymphadenectomy (advanced gastric cancer [AGC]) and D1 +  $\beta$  or D2 lymphadenectomy (early gastric cancer [EGC]). Patients had routinely been followed up every 3 months for the first year after surgery. Subsequently, patients with EGC were followed up every 6 months until 3 years while those with AGC were followed up every 6 months until 5 years. Finally, they were followed up annually using clinical and laboratory examinations with imaging and endoscopic evaluations.

### Clinicopathologic and Survival Data

Clinicopathologic data, including sex, age, body weight at surgery and recurrence, percentage of weight loss, surgical and perioperative findings (e.g., type of gastrectomy, pathologic T [pT], pathologic N [pN] and TNM stages, histopathological subtypes, Lauren histotypes, ratio of the number of metastatic LNs to the total number of harvested LNs [LNR]), laboratory values at recurrence, and survival were reviewed and documented. The pT, pN, and TNM stages were classified according to the 8th American Joint Committee on Cancer staging system (19). Neutrophil counts, lymphocyte counts, platelet counts, and hemoglobin levels were obtained at the time of recurrence.

The date of recurrence was defined as follows: the date of imaging examination when imaging findings were used for a definitive diagnosis or the date, when an imaging modality showed abnormal findings for the first time when recurrence was histologically confirmed (20). PRS was defined as the time from the date of recurrence to the date of death; the remaining patients were censored at the last follow-up date that occurred in our institution.

### $^{18}\text{F}$ -FDG PET/CT Scan and Image Analysis

All participants performed  $^{18}\text{F}$ -FDG PET/CT scans using two integrated PET/CT scanners (Discovery STE; GE Healthcare, Milwaukee, WI, USA or Biograph mCT; Siemens Healthineers

Knoxville, TN, USA). Before <sup>18</sup>F-FDG injection, all patients fasted for at least 6 hours and the blood glucose level of < 150 mg/dL was maintained. Patients were encouraged to rest during the <sup>18</sup>F-FDG uptake period. Images were acquired 60 minutes after 5.5 MBq/kg (Discovery STE) or 4.0 MBq/kg (Biograph mCT) of FDG was administered intravenously. A low-dose CT scan (Discovery STE; peak voltage of 120 kVp and slice thickness of 3.75 mm, Biograph mCT; peak voltage of 120 kVp and slice thickness of 3 mm) was acquired, and PET scan was obtained with an acquisition time of 3 min/bed position with the Discovery STE and 1.5 min/bed position with the Biograph mCT in 3-dimensional mode. Images were reconstructed via ordered-subset expectation maximum iterative reconstruction with attenuation correction.

The images were retrospectively interpreted on an Advantage Workstation 4.3 (GE Healthcare) by two board-certified nuclear medicine physicians. Both readers had knowledge of all available imaging studies; however, they were blinded to the patients' survival data. For the semiquantitative analysis, SUV<sub>max</sub> was measured by manually placing circular regions of interest over the visually discernable <sup>18</sup>F-FDG avid metastatic lesions on the attenuation-corrected transaxial <sup>18</sup>F-FDG PET images. To evaluate patients with anastomotic recurrence, abnormally increased uptake at the anastomosis site corresponding to endoscopic and histopathological findings was considered as a recurring malignant lesion. The SUV<sub>max</sub> was calculated using the following formula: SUV<sub>max</sub> = maximum activity in the region of interest (MBq/g) / (injected dose [MBq] / body weight [g]).

### Statistical Analyses

Numeric data are expressed as medians and interquartile ranges (IQRs), while categorical variables are reported as numbers and percentages. The optimal cutoff values for continuous variables for 3-year PRS predictions were derived from maximally selected chi-square statistics using R package 'Maxstat' (21). Recurrence timing was divided into early ( $\leq 2$  years from the surgery date) and late ( $> 2$  years from the surgery date) (22). The Kaplan-Meier method was used to estimate the 3-year PRS rate. All *p* values < 0.05 were considered statistically significant. For investigating predictive parameters affecting 3-year PRS, multivariate Cox proportional-hazards regression models were performed with the stepwise approach. Variables with *p* value < 0.05 in the univariate analysis were selected for multivariate analysis;

the hazards ratio (HR) and 95% confidence interval (CI) were estimated for each parameter. Statistical analyses were performed using MedCalc for Windows, version 18.10.2 (MedCalc Software, Ostend, Belgium) and R version 3.4.3 software (<http://www.r-project.org>, R Foundation for Statistical Computing, Vienna, Austria).

## RESULTS

### Patient Characteristics

In total, 47 patients with recurrent gastric cancer who received curative surgical resection were retrospectively analyzed. Recurrence was confirmed histologically in 33 (70.2%) of the 47 patients, and clinically diagnosed in the remaining 14 patients (29.8%). Overall, 39 of the 47 patients (83.0%) were confirmed dead within 3 years after recurrence during the median follow-up period of 30.3 months (IQR, 18.1–62.6 months), and 3-year PRS rates were 17.0%.

The median PRS time was 10.0 months (IQR, 4.7–19.8 months) in all patients, 50.7 months (IQR, 40.3–71.8 months) in patients who survived over 3 years while 7.7 months (IQR, 4.5–12.4 months) in those who died within 3 years. The median SUV<sub>max</sub> obtained from restaging <sup>18</sup>F-FDG PET/CT scans were 4.0 (IQR, 3.3–4.7) in patients surviving over 3 years and 7.3 (IQR, 5.0–9.9) in those who died within 3 years.

The characteristics of the enrolled patients (median age, 59.0 years; IQR, 46.0–64.5 years) are listed in Table 1. Most patients were diagnosed with AGC (89.4%) while only five patients had EGC (10.6%). Pathologic TNM stage III was most frequently observed (63.9%). According to the World Health Organization classification, 31 patients (66.0%) were categorized as having adenocarcinoma (30 tubular and 1 mucinous types) and 16 (34.0%) had a signet ring cell type. In terms of the Lauren histotype, 33 patients (70.2%) were diffuse and 14 (29.8%) were intestinal.

The median time to recurrence (i.e., DFS) was 17.8 months (IQR, 12.4–35.9 months), and a significant portion of patients (63.9%) recurred within 2 years. Six of the 47 patients (12.8%) experienced locoregional recurrence, 31 (65.9%) had distant metastasis, and 10 (21.3%) developed both locoregional and distant failure at the time of recurrence. Most frequent patterns of distant metastasis were hematogenous (60.0%), followed by peritoneal recurrence (18.3%), and then lymphatic metastasis (16.7%). The therapeutic aim of recurrent disease was as follows: 12 patients (25.5%) underwent potentially curative treatment,

27 patients (57.5%) underwent palliative treatment, and the remaining eight patients (17.0%) received only supportive care.

### Uni- and Multivariate Analyses

The optimal cutoff values of patients' age, LNR, SUV<sub>max</sub>, weight loss percentage, and hemoglobin level as well as

**Table 1. Patient Characteristics Depending on 3-Year Post-Recurrence Survival Status**

Variables	Total (n = 47) n (%) or Median (IQR)	Live More than 3 Years after Recurrence (n = 8) n (%) or Median (IQR)	Death within 3 Years after Recurrence (n = 39) n (%) or Median (IQR)	P
Age at diagnosis, years	59.0 (46.0–64.5)	55.5 (47.5–65.5)	59.0 (46.0–64.0)	0.723
Sex				0.146
Male	31 (66.0)	3 (37.5)	28 (71.8)	
Female	16 (34.0)	5 (62.5)	11 (28.2)	
Type of gastrectomy				0.536
Total	13 (27.7)	1 (12.5)	12 (30.8)	
Subtotal	34 (72.3)	7 (87.5)	27 (69.2)	
Pathologic T stage*				0.328
T1	5 (10.6)	2 (25.0)	3 (7.7)	
T2	6 (12.8)	1 (12.5)	5 (12.8)	
T3	7 (14.9)	2 (25.0)	5 (12.8)	
T4	29 (61.7)	3 (37.5)	26 (66.7)	
Pathologic N stage*				0.203
N0	12 (25.5)	4 (50.0)	8 (20.5)	
N1	3 (6.4)	1 (12.5)	2 (5.1)	
N2	6 (12.8)	0 (0.0)	6 (15.4)	
N3	26 (55.3)	3 (37.5)	23 (59.0)	
TNM stage*				0.178
I	5 (10.6)	2 (25.0)	3 (7.7)	
II	12 (25.5)	3 (37.5)	9 (23.1)	
III	30 (63.9)	3 (37.5)	27 (69.2)	
Histopathologic subtype				0.759
Adenocarcinoma	31 (66.0)	6 (75.0)	25 (64.1)	
Signet ring cell	16 (34.0)	2 (25.0)	14 (35.9)	
Lauren histotype				0.343
Diffuse	33 (70.2)	4 (50.0)	29 (74.4)	
Intestinal	14 (29.8)	4 (50.0)	10 (25.6)	
LNR	0.11 (0.01–0.33)	0.01 (0.00–0.33)	0.11 (0.05–0.33)	0.311
SUV <sub>max</sub>	6.3 (4.2–9.2)	4.0 (3.3–4.7)	7.3 (5.0–9.9)	0.015
Weight loss, %	11.6 (8.6–15.8)	10.3 (5.0–13.9)	11.6 (9.8–17.5)	0.130
Hemoglobin, g/dL	11.7 (11.1–12.6)	11.8 (11.6–12.1)	11.7 (10.9–12.6)	0.671
Neutrophil count, cells/uL	3503 (2601–4894)	2742 (2298–3497)	3934 (2691–5338)	0.125
Lymphocyte count, cells/uL	1317 (964–1739)	1235 (869–1875)	1335 (964–1739)	0.588
Platelet count, x10 <sup>3</sup> cells/uL	228 (193–275)	221 (191–268)	231 (193–278)	0.887
Recurrence timing				0.035
Early, ≤ 2 years	30 (63.9)	2 (25.0)	28 (71.8)	
Late, > 2 years	17 (36.1)	6 (75.0)	11 (28.2)	
First sites of recurrence				0.192
Locoregional recurrence only	6 (12.8)	2 (25.0)	4 (10.3)	
Distant metastasis only	31 (65.9)	6 (75.0)	25 (64.1)	
Locoregional and distant failure	10 (21.3)	0 (0.0)	10 (25.6)	

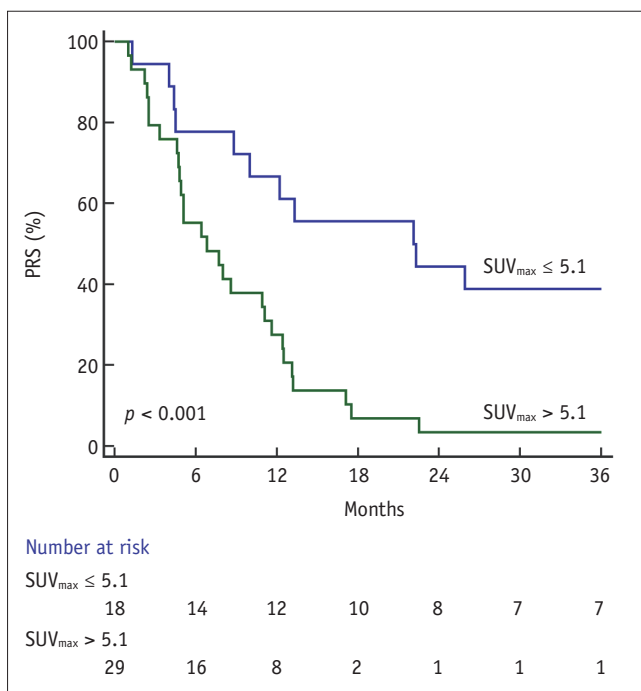
\*According to 8th AJCC staging system. AJCC = American Joint Committee on Cancer, IQR = interquartile range, LNR = ratio of number of metastatic lymph nodes to total number of harvested lymph nodes, SUV<sub>max</sub> = maximum standardized uptake value, TNM = tumor-node-metastasis

for the neutrophil, lymphocyte and platelet counts for a 3-year PRS were 50, 0.063, 5.1, 14.7, 11.4, 2997, 1084, and 154000, respectively. SUV<sub>max</sub> performed a Kaplan-Meier analysis with a log-rank test to compare 3-year PRS stratification. Notably, high SUV<sub>max</sub> was associated with a significantly lower 3-year PRS rate compared to low SUV<sub>max</sub> (3.5% vs. 38.9%, *p* < 0.001) (Fig. 1).

Values above and below the optimal cutoff for LNR, SUV<sub>max</sub>, weight loss, neutrophil count, and recurrence timing were significantly associated with 3-year PRS in the univariate Cox proportional-hazards regression analysis (Table 2). In the multivariate analysis, SUV<sub>max</sub> (HR, 2.57; 95% CI, 1.16–5.69; *p* = 0.012), weight loss (HR, 2.24; 95% CI, 1.11–4.56; *p* = 0.025), and neutrophil count (HR, 2.68; 95% CI, 1.32–5.43; *p* = 0.006) were independently prognostic for 3-year PRS. However, the LNR and recurrence timing were no longer statistically significant in the multivariate analysis. A visual presentation of independent prognostic factors for each study participant is displayed in Figure 2.

## DISCUSSION

In the current study, we assessed the prognostic value of



**Fig. 1. Cumulative PRS curves of 47 patients with recurrent gastric cancer stratified by SUV<sub>max</sub>.** High SUV<sub>max</sub> was associated with significantly lower 3-year PRS rate compared to low SUV<sub>max</sub> (3.5% vs. 38.9%, *p* < 0.001). PRS = post-recurrence survival, SUV<sub>max</sub> = maximum standardized uptake value

SUV<sub>max</sub> on <sup>18</sup>F-FDG PET/CT in patients with recurrent gastric cancer after curative surgical resection. Several studies have reported the prognostic factors for PRS in a variety of malignancies, including stomach, breast, hepatocellular, cervical, and non-small-cell lung cancers (23-26). However, to the best of our knowledge, no studies have established the prognostic value of <sup>18</sup>F-FDG PET/CT after recurrence in the field of gastric cancer. Our results demonstrated that the SUV<sub>max</sub> was an independent survival predictor for 3-year PRS in the multivariate analysis.

Death after recurrence usually occurs rapidly even after achieving curative intent resection. Despite more than 80% of patients dying within 3 years following a recurrence (4, 5), there were some long-term survivors. In our study, 17% of the patients lived more than 3 years after relapse and their median PRS was over 50 months. In that regard, predicting patient outcomes after recurrence might be helpful for creating a personalized therapeutic approach or in follow-up planning. Hence, our results suggest a potential value of SUV<sub>max</sub> for further prognostication in patients with recurrent gastric cancer. The SUV<sub>max</sub>, a simple measurement and the most widely used metabolic parameter obtained by <sup>18</sup>F-FDG PET/CT (27), consistently estimated 3-year PRS outcomes. This may be because increased <sup>18</sup>F-FDG uptake reflects biological aggressiveness not only the initial staging of gastric cancer but also in cases of recurrence (13, 28). Thus, <sup>18</sup>F-FDG PET/CT seems to play an additional prognostication role in patients with recurrent disease regarding their survival and in detecting recurrence.

Inflammatory response to cancer contributes to carcinogenesis and tumor progression. Therefore, inflammatory biomarkers have recently been evaluated as valuable prognostic factors in various type of cancers (29); moreover, the neutrophil-to-lymphocyte ratio (NLR) and platelet-to-lymphocyte ratio (PLR) have been widely evaluated for prognostication in gastric cancers (30). Some studies reported NLR to be more predictive for prognoses than PLR (31, 32). More recently, Guner et al. (9) demonstrated that simple parameters (e.g., neutrophil count) are better for predicting short- and long-term outcomes in patients with surgically resected gastric cancers compared to complex parameters (e.g., NLR). Our findings show that high neutrophil counts upon recurrence were associated with poor prognoses in patients with relapsed gastric cancer.

The percentage of weight loss, as a simple nutritional parameter, was also an independent survival predictor for

**Table 2. Univariate and Multivariate Analyses for 3-Year Post-Recurrence Survival**

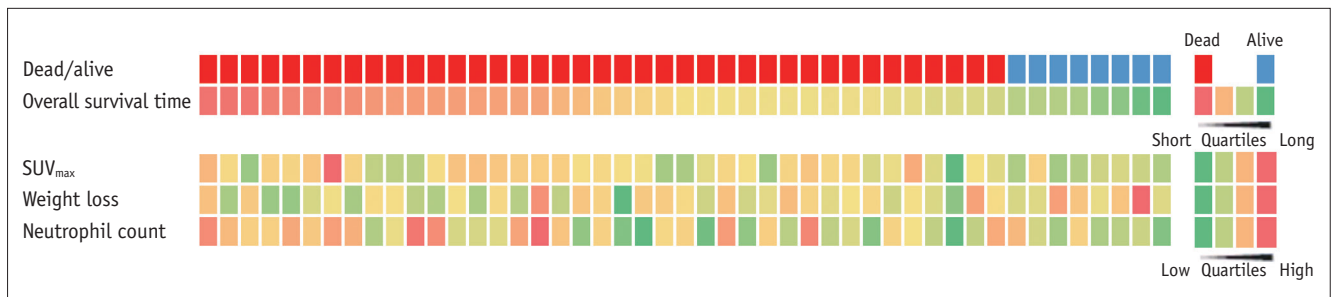
Variables	Univariate Analysis		Multivariate Analysis	
	HR (95% CI)	<i>P</i>	HR (95% CI)	<i>P</i>
Age at diagnosis, years				
< 50*				
≥ 50	1.57 (0.80–3.06)	0.187		
Sex				
Male*				
Female	0.54 (0.27–1.09)	0.086		
Type of gastrectomy				
Total*				
Subtotal	0.69 (0.35–1.36)	0.282		
Pathologic T stage†				
T1*				
T2	1.35 (0.32–5.71)	0.682		
T3	0.86 (0.21–3.61)	0.837		
T4	1.77 (0.53–5.89)	0.355		
Pathologic N stage†				
N0*				
N1	0.78 (0.17–3.69)	0.754		
N2	2.39 (0.79–7.13)	0.119		
N3	2.01 (0.89–4.51)	0.091		
TNM stage†				
I*				
II	0.95 (0.26–3.53)	0.942		
III	1.79 (0.54–5.97)	0.337		
Histopathologic subtype				
Adenocarcinoma*				
Signet ring cell	1.26 (0.65–2.43)	0.493		
Lauren histotype				
Diffuse*				
Intestinal	0.68 (0.33–1.41)	0.298		
LNR				
≤ 0.063*				
> 0.063	2.22 (1.12–4.43)	0.023		
SUV <sub>max</sub>				
≤ 5.1*				
> 5.1	3.30 (1.58–6.87)	0.001	2.57 (1.16–5.69)	0.012
Weight loss, %				
≤ 14.7*				
> 14.7	2.91 (1.48–5.71)	0.002	2.24 (1.11–4.56)	0.025
Hemoglobin, g/dL				
≥ 11.4*				
< 11.4	1.88 (0.98–3.58)	0.055		
Neutrophil count, cells/uL				
≤ 2997*				
> 2997	2.89 (1.45–5.79)	0.003	2.68 (1.32–5.43)	0.006
Lymphocyte count, cells/uL				
≤ 1084*				
> 1084	0.58 (0.30–1.10)	0.095		



**Table 2. Univariate and Multivariate Analyses for 3-Year Post-Recurrence Survival (Continued)**

Variables	Univariate Analysis		Multivariate Analysis	
	HR (95% CI)	P	HR (95% CI)	P
Platelet count, cells/uL				
≥ 154000*				
< 154000	2.16 (0.88–5.31)	0.094		
Recurrence timing				
Early, ≤ 2 years	2.40 (1.18–4.91)	0.016		
Late, > 2 years*				
First sites of recurrence				
Locoregional recurrence only*				
Distant metastasis only	1.49 (0.52–4.31)	0.458		
Locoregional and distant failure	2.62 (0.81–8.41)	0.107		

\*Reference of categorical parameter, †According to 8th AJCC staging system. CI = confidence interval, HR = hazard ratio



**Fig. 2. Visual summary of independent prognostic factors in series of 47 patients.** Red color indicates patients who died within 3 years after recurrence, and blue color indicates those who survived. Overall survival time after recurrence and numeric data of each parameter are depicted on 4-color scale.

PRS in the present study. Weight loss can be an indicator of malnutrition and is closely associated with patients' postoperative quality of life (33). Aoyama et al. (34) found that postoperative weight loss ≥ 15% could lead to worse survival outcomes through a significantly decreased compliance of adjuvant treatments. As appropriate nutritional care could improve survival after recurrence and significantly reduce patients' perioperative morbidity and mortality (35), further studies applying appropriate nutritional assessment tools might help validate whether the patient's nutritional status could affect PRS or not.

Increased glucose consumption and glycolysis are critical hallmarks of gastric cancer; therapeutically targeting tumor cell metabolism processes, such as glucose metabolism, is more convenient approach and is associated with fewer side effects than targeting other biologic systems since cellular metabolic pathways represent the terminus of biologic systems and control the other systems genetically (36, 37). Thus, anti-tumor therapies targeting this aspect of cancer are new and appear promising. There have been several studies on therapies reducing glucose consumption of gastric cancer cells (38), suppressing hexokinase II

(39, 40), or blocking the Warburg effect in combination with other therapies (41) in *in vitro* and preclinical *in vivo* settings. As glycolysis-targeted or other novel anti-tumor therapies are discovered, the application of <sup>18</sup>F-FDG PET/CT, a clinical imaging surrogate for enhanced glucose metabolism, could be a considerable strategy to evaluate therapeutic responses and prognostication in recurrent gastric cancer.

The present study had some limitations. The retrospective nature and the relatively small patient dataset from a single institution were the main limitations; these might also have subjected the study to selection bias. Moreover, patients with recurrent cancer who did not undergo <sup>18</sup>F-FDG PET/CT scans were not included. However, our study suggests the potential value of <sup>18</sup>F-FDG uptake for further prognostication in patients with recurrent gastric cancer. In addition, two different PET/CT scanners (Discovery STE and Biograph mCT) were used. The difference in the resolution and administered <sup>18</sup>F-FDG doses could have affected SUV<sub>max</sub> values. However, a prior study has validated that the difference in the SUV<sub>max</sub> values of the same lesion between two different scanners is < 0.05 (42). Despite these limitations, we suggest that

<sup>18</sup>F-FDG uptake at recurrence might be helpful in predicting survival outcomes in patients with recurrent gastric cancer. Further large-scale prospective studies should be conducted using <sup>18</sup>F-FDG PET/CT to assess the prognostic value in recurrent gastric cancer.

In conclusion, the present study revealed that SUV<sub>max</sub> could estimate survival outcomes in patients with recurrent gastric cancer after curative resection. Thus, restaging <sup>18</sup>F-FDG PET/CT scans could be used to estimate life expectancy after recurrence and may bolster the role of <sup>18</sup>F-FDG PET/CT in oncology practice.

### Conflicts of Interest

The authors have no potential conflicts of interest to disclose.

### ORCID iDs

Bong-Il Song

<https://orcid.org/0000-0002-3106-6112>

Sung Hoon Kim

<https://orcid.org/0000-0002-1024-1153>

Hae Won Kim

<https://orcid.org/0000-0002-6707-3904>

Kyoung Sook Won

<https://orcid.org/0000-0001-7185-911X>

Young-Gil Son

<https://orcid.org/0000-0001-9088-6519>

Seung Wan Ryu

<https://orcid.org/0000-0003-0374-5748>

### REFERENCES

- Bray F, Ferlay J, Soerjomataram I, Siegel RL, Torre LA, Jemal A. Global cancer statistics 2018: GLOBOCAN estimates of incidence and mortality worldwide for 36 cancers in 185 countries. *CA Cancer J Clin* 2018;68:394-424
- Katai H, Ishikawa T, Akazawa K, Isobe Y, Miyashiro I, Oda I, et al. Five-year survival analysis of surgically resected gastric cancer cases in Japan: a retrospective analysis of more than 100,000 patients from the nationwide registry of the Japanese Gastric Cancer Association (2001-2007). *Gastric Cancer* 2018;21:144-154
- Moon YW, Jeung HC, Rha SY, Yoo NC, Roh JK, Noh SH, et al. Changing patterns of prognosticators during 15-year follow-up of advanced gastric cancer after radical gastrectomy and adjuvant chemotherapy: a 15-year follow-up study at a single Korean institute. *Ann Surg Oncol* 2007;14:2730-2737
- Ito S, Ohashi Y, Sasako M. Survival after recurrence in patients with gastric cancer who receive S-1 adjuvant chemotherapy: exploratory analysis of the ACTS-GC trial. *BMC Cancer* 2018;18:449
- Spolverato G, Ejaz A, Kim Y, Squires MH, Poultides GA, Fields RC, et al. Rates and patterns of recurrence after curative intent resection for gastric cancer: a United States multi-institutional analysis. *J Am Coll Surg* 2014;219:664-675
- Kattan MW, Karpeh MS, Mazumdar M, Brennan MF. Postoperative nomogram for disease-specific survival after an R0 resection for gastric carcinoma. *J Clin Oncol* 2003;21:3647-3650
- Han DS, Suh YS, Kong SH, Lee HJ, Choi Y, Aikou S, et al. Nomogram predicting long-term survival after d2 gastrectomy for gastric cancer. *J Clin Oncol* 2012;30:3834-3840
- Woo Y, Son T, Song K, Okumura N, Hu Y, Cho GS, et al. A novel prediction model of prognosis after gastrectomy for gastric carcinoma: development and validation using Asian databases. *Ann Surg* 2016;264:114-120
- Guner A, Kim SY, Yu JE, Min IK, Roh YH, Roh C, et al. Parameters for predicting surgical outcomes for gastric cancer patients: simple is better than complex. *Ann Surg Oncol* 2018;25:3239-3247
- Marcus C, Subramaniam RM. PET/computed tomography and precision medicine: gastric cancer. *PET Clin* 2017;12:437-447
- Yun M. Imaging of gastric cancer metabolism using 18 F-FDG PET/CT. *J Gastric Cancer* 2014;14:1-6
- Lee JW, Lee SM, Lee MS, Shin HC. Role of <sup>18</sup>F-FDG PET/CT in the prediction of gastric cancer recurrence after curative surgical resection. *Eur J Nucl Med Mol Imaging* 2012;39:1425-1434
- Park JC, Lee JH, Cheoi K, Chung H, Yun MJ, Lee H, et al. Predictive value of pretreatment metabolic activity measured by fluorodeoxyglucose positron emission tomography in patients with metastatic advanced gastric cancer: the maximal SUV of the stomach is a prognostic factor. *Eur J Nucl Med Mol Imaging* 2012;39:1107-1116
- Kim J, Lim ST, Na CJ, Han YH, Kim CY, Jeong HJ, et al. Pretreatment F-18 FDG PET/CT parameters to evaluate progression-free survival in gastric cancer. *Nucl Med Mol Imaging* 2014;48:33-40
- Song BI, Kim HW, Won KS, Ryu SW, Sohn SS, Kang YN. Preoperative standardized uptake value of metastatic lymph nodes measured by <sup>18</sup>F-FDG PET/CT improves the prediction of prognosis in gastric cancer. *Medicine (Baltimore)* 2015;94:e1037
- Lee JE, Hong SP, Ahn DH, Jeon TJ, Kang MK, Kwon CI, et al. The role of <sup>18</sup>F-FDG PET/CT in the evaluation of gastric cancer recurrence after curative gastrectomy. *Yonsei Med J* 2011;52:81-88
- Cayvarlı H, Bekiş R, Akman T, Altun D. The role of 18F-FDG PET/CT in the evaluation of gastric cancer recurrence. *Mol Imaging Radionucl Ther* 2014;23:76-83
- Kim SJ, Cho YS, Moon SH, Bae JM, Kim S, Choe YS, et al. Primary tumor <sup>18</sup>F-FDG avidity affects the performance of <sup>18</sup>F-FDG PET/CT for detecting gastric cancer recurrence. *J Nucl*



- Med* 2016;57:544-550
19. Amin MB, Edge S, Greene F, Byrd DR, Brookland RK, Washington MK, et al. *AJCC cancer staging manual*, 8th ed. New York: Springer International Publishing, 2017:203-220
  20. Fujiya K, Tokunaga M, Makuuchi R, Nishiwaki N, Omori H, Takagi W, et al. Early detection of nonperitoneal recurrence may contribute to survival benefit after curative gastrectomy for gastric cancer. *Gastric Cancer* 2017;20:141-149
  21. Hothorn T, Lausen B. On the exact distribution of maximally selected rank statistics. *Comput Stat Data Anal* 2003;43:121-137
  22. Shiraishi N, Inomata M, Osawa N, Yasuda K, Adachi Y, Kitano S. Early and late recurrence after gastrectomy for gastric carcinoma. Univariate and multivariate analyses. *Cancer* 2000;89:255-261
  23. Facciorusso A, Del Prete V, Antonino M, Crucinio N, Neve V, Di Leo A, et al. Post-recurrence survival in hepatocellular carcinoma after percutaneous radiofrequency ablation. *Dig Liver Dis* 2014;46:1014-1019
  24. Lee K, Kim HR, Kim DK, Kim YH, Park SI, Choi SH, et al. Post-recurrence survival analysis of stage I non-small-cell lung cancer. *Asian Cardiovasc Thorac Ann* 2017;25:623-629
  25. Yoshida K, Kajiyama H, Utsumi F, Niimi K, Sakata J, Suzuki S, et al. A post-recurrence survival-predicting indicator for cervical cancer from the analysis of 165 patients who developed recurrence. *Mol Clin Oncol* 2018;8:281-285
  26. Sopik V, Sun P, Narod SA. Predictors of time to death after distant recurrence in breast cancer patients. *Breast Cancer Res Treat* 2019;173:465-474
  27. Sprinz C, Zanon M, Altmayer S, Watte G, Irion K, Marchiori E, et al. Effects of blood glucose level on <sup>18</sup>F fluorodeoxyglucose (<sup>18</sup>F-FDG) uptake for PET/CT in normal organs: an analysis on 5623 patients. *Sci Rep* 2018;8:2126
  28. Pak KH, Yun M, Cheong JH, Hyung WJ, Choi SH, Noh SH. Clinical implication of FDG-PET in advanced gastric cancer with signet ring cell histology. *J Surg Oncol* 2011;104:566-570
  29. Yoon HJ, Kim BS, Moon CM, Yoo J, Lee KE, Kim Y. Prognostic value of diffuse splenic FDG uptake on PET/CT in patients with gastric cancer. *PLoS One* 2018;13:e0196110
  30. Lee S, Oh SY, Kim SH, Lee JH, Kim MC, Kim KH, et al. Prognostic significance of neutrophil lymphocyte ratio and platelet lymphocyte ratio in advanced gastric cancer patients treated with FOLFOX chemotherapy. *BMC Cancer* 2013;13:350
  31. Kim EY, Lee JW, Yoo HM, Park CH, Song KY. The platelet-to-lymphocyte ratio versus neutrophil-to-lymphocyte ratio: which is better as a prognostic factor in gastric cancer? *Ann Surg Oncol* 2015;22:4363-4370
  32. Zhang Y, Lu JJ, Du YP, Feng CX, Wang LQ, Chen MB. Prognostic value of neutrophil-to-lymphocyte ratio and platelet-to-lymphocyte ratio in gastric cancer. *Medicine (Baltimore)* 2018;97:e0144
  33. Ryu SW, Kim IH. Comparison of different nutritional assessments in detecting malnutrition among gastric cancer patients. *World J Gastroenterol* 2010;16:3310-3317
  34. Aoyama T, Sato T, Maezawa Y, Kano K, Hayashi T, Yamada T, et al. Postoperative weight loss leads to poor survival through poor S-1 efficacy in patients with stage II/III gastric cancer. *Int J Clin Oncol* 2017;22:476-483
  35. Son YG, Kwon IG, Ryu SW. Assessment of nutritional status in laparoscopic gastrectomy for gastric cancer. *Transl Gastroenterol Hepatol* 2017;2:85
  36. Vander Heiden MG, Cantley LC, Thompson CB. Understanding the Warburg effect: the metabolic requirements of cell proliferation. *Science* 2009;324:1029-1033
  37. Yuan LW, Yamashita H, Seto Y. Glucose metabolism in gastric cancer: the cutting-edge. *World J Gastroenterol* 2016;22:2046-2059
  38. Lin LL, Hsia CR, Hsu CL, Huang HC, Juan HF. Integrating transcriptomics and proteomics to show that tanshinone IIA suppresses cell growth by blocking glucose metabolism in gastric cancer cells. *BMC Genomics* 2015;16:41
  39. Maher JC, Krishan A, Lampidis TJ. Greater cell cycle inhibition and cytotoxicity induced by 2-deoxy-D-glucose in tumor cells treated under hypoxic vs aerobic conditions. *Cancer Chemother Pharmacol* 2004;53:116-122
  40. Wang TA, Xian SL, Guo XY, Zhang XD, Lu YF. Combined <sup>18</sup>F-FDG PET/CT imaging and a gastric orthotopic xenograft model in nude mice are used to evaluate the efficacy of glycolysis-targeted therapy. *Oncol Rep* 2018;39:271-279
  41. Cheong JH, Park ES, Liang J, Dennison JB, Tsavachidou D, Nguyen-Charles C, et al. Dual inhibition of tumor energy pathway by 2-deoxyglucose and metformin is effective against a broad spectrum of preclinical cancer models. *Mol Cancer Ther* 2011;10:2350-2362
  42. Sunderland JJ, Christian PE. Quantitative PET/CT scanner performance characterization based upon the society of nuclear medicine and molecular imaging clinical trials network oncology clinical simulator phantom. *J Nucl Med* 2015;56:145-152