



# The palaeoenvironment of the Upper Cretaceous (Cenomanian–Turonian) portion of the Winton Formation, Queensland, Australia

Tamara L. Fletcher<sup>1,2</sup>, Patrick T. Moss<sup>3</sup> and Steven W. Salisbury<sup>4</sup>

<sup>1</sup> Department of Ecosystem and Conservation Sciences, University of Montana, Missoula, MT, United States of America

<sup>2</sup> Department of Geography, University of Nevada—Reno, Reno, United States of America

<sup>3</sup> School of Earth and Environmental Sciences, University of Queensland, Brisbane, Australia

<sup>4</sup> School of Biological Sciences, University of Queensland, Brisbane, Australia

## ABSTRACT

The Winton Formation is increasingly recognised as an important source of information about the Cretaceous of Australia, and, more broadly, the palaeobiogeographic history of eastern Gondwana. With more precise dating and stratigraphic controls starting to provide temporal context to the geological and palaeontological understanding of this formation, it is timely to reassess the palaeoenvironment in which it was deposited. This new understanding helps to further differentiate the upper, most-studied portion of the formation (Cenomanian–Turonian) from the lower portions (Albian–Cenomanian), allowing a coherent picture of the ecosystem to emerge. Temperatures during the deposition of the Upper Cretaceous portion of the Winton Formation were warm, with high, seasonal rainfall, but not as extreme as the modern monsoon. The landscape was heterogeneous, a freshwater alluvial plain bestrode by low energy, meandering rivers, minor lakes and mires. Infrequent, scouring flood events were part of a multi-year cycle of drier and wetter years. The heavily vegetated flood plains supported abundant large herbivores. This was the final infilling of the great Eromanga Basin.

Submitted 9 March 2018

Accepted 2 August 2018

Published 7 September 2018

Corresponding author

Tamara L. Fletcher,

tamara.fletcher@umontana.edu

Academic editor

Barry Brook

Additional Information and  
Declarations can be found on  
page 25

DOI 10.7717/peerj.5513

© Copyright

2018 Fletcher et al.

Distributed under

Creative Commons CC-BY 4.0

OPEN ACCESS

**Subjects** Evolutionary Studies, Paleontology

**Keywords** Palaeoclimate, Reconstruction, Palaeoecology, Flora, Fauna, Diversity, Disturbance, Dinosaur, Mesozoic

## INTRODUCTION

The Winton Formation of central-western Queensland provides a detailed insight into the continental biota of eastern Gondwana during the middle part of the Cretaceous Period, with deposition spanning from the upper Albian to the upper Cenomanian–lower Turonian (approximately 101–92 million years ago; *Tucker et al., 2013*; *Tucker et al., 2016*; *Tucker et al., 2017*). Its faunal assemblage includes evidence of a diverse range of invertebrates (insects, freshwater bivalves and gastropods), along with both aquatic and terrestrial vertebrates (dinosaurs, crocodyliforms, teleosts and dipnoan lungfishes, lizards, and turtles; *Thulborn & Wade, 1979*; *Thulborn & Wade, 1984*; *Dettmann & Clifford, 1992*; *Hocknull, 1997*; *Kemp, 1997*; *Hocknull, 2000*; *Molnar & Salisbury, 2005*; *Hocknull & Cook, 2008*;

*Scanlon & Hocknull, 2008; Dettmann, Clifford & Peters, 2009; Hocknull et al., 2009; Agnolin et al., 2010; Molnar, 2010; Romilio & Salisbury, 2011; Dettmann, Clifford & Peters, 2012; Romilio, Tucker & Salisbury, 2013; Berrell et al., 2014; Fletcher & Salisbury, 2014; Romilio & Salisbury, 2014; Poropat et al., 2015a; Poropat et al., 2015b; White et al., 2015a; White et al., 2015b; Poropat et al., 2016; White et al., 2016*). At least 50 macrofossil plant taxa are present, from 10 orders, showing a co-dominance of araucariacean, podocarp and cupressacean conifers with early angiosperms (*Bose, 1955; Whitehouse, 1955; White, 1966; Dettmann & Playford, 1969; Peters & Christophel, 1978; McLoughlin, Drinnan & Rozefelds, 1995; Chambers, Drinnan & McLoughlin, 1998; Martin, 1998; Pole, 1999; Pole & Douglas, 1999; Dettmann & Clifford, 2000; Pole, 2000a; Pole, 2000b; Clifford & Dettmann, 2005; Dettmann, Clifford & Peters, 2009; McLoughlin, Pott & Elliott, 2010; Dettmann, Clifford & Peters, 2012; Fletcher et al., 2014a*).

Prior to 2013, the age of Winton Formation could only be constrained relatively, based mainly on palynological and biostratigraphic correlations (*Cookson & Dettmann, 1959; Dettmann & Playford, 1969; Burger, 1970; Senior, Harrison & Mond, 1978; Frakes et al., 1987; Helby, Morgan & Partridge, 1987; Burger, 1990; Dettmann et al., 1992; Burger, 1993*), and there was limited stratigraphic framework in which to place fossil-bearing localities. Work by *Bryan et al. (2012), Tucker et al. (2013), Tucker et al. (2016), Tucker et al. (2017)*) and *Syme et al. (2016)* has greatly improved the temporal framework of the Winton Formation through the determination of maximum ages for specific fossil-bearing localities using detrital zircon chronology along with more detailed stratigraphic, sedimentological and architectural analyses. It is now apparent that the Winton Formation was deposited over a span of at least 10–12 million years, during what can be regarded as the terminal phase of the Eromanga Sea, with regression from marine to continental ecosystems driving environmental change across the basin (*Tucker et al., 2017*). The tempo of this transition and how it affected the local flora and fauna has only recently begun to be appreciated and assessed (*Syme et al., 2016; Tucker et al., 2017; Syme & Salisbury, 2018*).

Given the pace at which new information on the age and stratigraphy of the Winton Formation has emerged in recent years, a reassessment of its changing palaeoenvironment using new data on its geology, hydrology, palaeoclimate, flora, and fauna, is timely. This is particularly the case for the Upper Cretaceous (Cenomanian–Turonian) portion of the Winton Formation, in which the bulk of the described fossil sites occur. A more refined model of the changing palaeoenvironmental conditions that existed during the time the Winton Formation was deposited will be of use not only for future research on the Winton Formation specifically but also for Cretaceous researchers more broadly. The refined models can also be used as a base from which future finds may be used to clarify, resolve or change our understanding of this increasingly important suite of ‘mid’ Cretaceous terrestrial localities, with the added advantage of considerably simplifying comparisons with other Cretaceous Gondwanan fossil assemblages.

## SURVEY METHODOLOGY

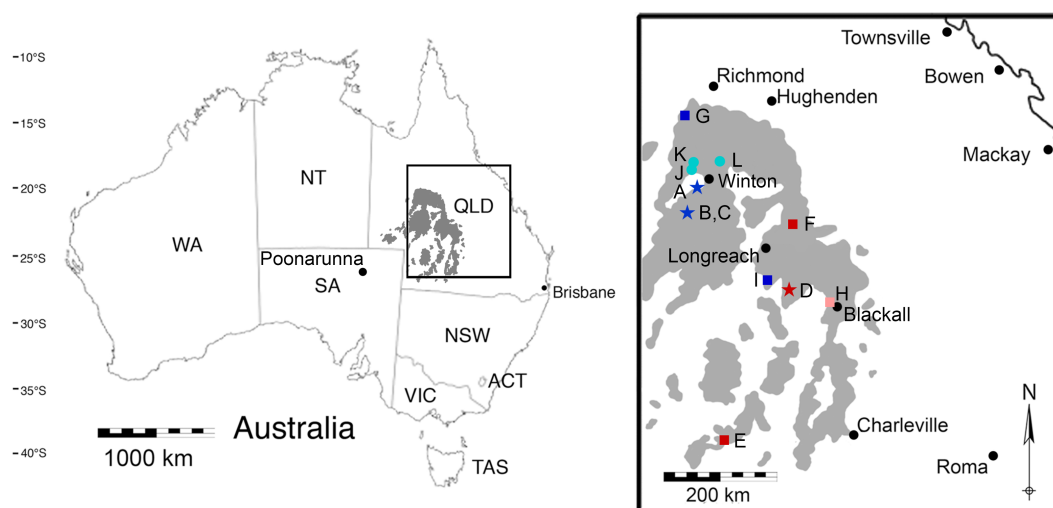
Multiple electronic searches were conducted from study conception to February 2018, with no language or period restrictions, in online databases including the ISI/Web of

Science, Scopus and Google Scholar. Initial search terms included 'Winton Formation', as well as combinations of 'Cretaceous', 'Queensland', and 'Australia'. The search included materials in peer-reviewed journal articles, geological reports, conference proceedings and academic books. Non-peer-reviewed sources such as unpublished theses, conference abstract volumes and popular articles were not included. We also searched the reference section of these publications, which aided discovery of older sources, particularly where the age and name of units has been reassigned since publication. Materials were included that were considered to inform the authors on the palaeoenvironment. Articles related to the Winton Formation, but on derived topics (e.g., biomechanics of Winton Formation dinosaurs), were only included if they also contributed to the broader palaeoenvironmental reconstruction.

## GEOLOGY

The Winton Formation covers a large geographic area of western Queensland, northeast South Australia and northwest New South Wales (Fig. 1; Gray, McKillop & McKellar, 2002) and has been the subject of interest for both economic geology and basic research (Table 1). At the time the Upper Cretaceous portion of the formation was deposited, central western Queensland was at  $\sim 50^{\circ}\text{S}$  palaeolatitude (Li & Powell, 2001). The Winton Formation conformably overlies the marine Mackunda Formation, forming the uppermost unit of the Manuka subgroup within the Rolling Downs Group in the intracratonic Eromanga Basin, and its surface is either exposed or overlain locally by Paleogene or younger strata (Fig. 2; McLoughlin, Pott & Elliott, 2010). Deep weathering of the Winton Formation has oxidised palynomorphs in those parts close to the surface, limiting the capacity to estimate the youngest age of deposition (McLoughlin, Pott & Elliott, 2010). The formation, as a whole, consists of volcanolithic sandstones, likely derived from the Whitsundays Volcanic Province (Bryan et al., 1997; Bryan et al., 2000; Bryan et al., 2012; Tucker et al., 2013; Tucker et al., 2016; Tucker et al., 2017), and facies that are complex and repetitive including fine- to medium-grained feldspatholithic or lithofeldspathic arenite, siltstone, mudstone, and claystone (Fielding, 1992; Romilio & Salisbury, 2011; Romilio, Tucker & Salisbury, 2013; Tucker et al., 2013; Syme et al., 2016; Tucker et al., 2016; Tucker et al., 2017) with very minor coal seams (Senior, Harrison & Mond, 1978).

On the basis of detrital zircon chronology, stratigraphy, sedimentology, and architectural analysis, the Winton Formation is now informally divided into Upper and Lower Cretaceous parts (Tucker et al., 2013; Tucker et al., 2016; Tucker et al., 2017). Fossil-bearing localities in the greater Winton area, such as those on Elderslie, Belmont and Lovelle Downs Stations, Lark Quarry Conservation Area, and Bladensburg National Park, come from a portion of the Winton Formation that was deposited during the early Late Cretaceous (late Cenomanian–early Turonian,  $\sim 93.9$  Ma), with a number of distinct horizons and facies associations that are fairly continuous across the region (Tucker et al., 2013; Tucker et al., 2017). Other Winton Formation fossil-bearing localities, such those in the Isisford area (Salisbury et al., 2006; Berrell et al., 2014; Syme et al., 2016; Syme & Salisbury, 2018) were deposited some 10 million years earlier during late Early Cretaceous (late Albian to



**Figure 1** A map of the outcropping of the Winton Formation in Queensland, Australia. This map of Australia shows the outcropping of the Winton Formation in Queensland (in grey), focusing on the fossiliferous area around Winton (enlarged; adapted from [Fletcher et al., 2014a](#)). Coloured symbols indicate sites dated by detrital zircons (dark blue/red) or sites stratigraphically correlated to sites dated by detrital zircons (light blue/pink) in [Tucker et al. \(2013\)](#) and [Syme et al. \(2016\)](#). Stars indicate surface samples; squares indicate Geologic Survey of Queensland (GSQ) cores; circles are correlated surface exposures. (A) Bladensburg National Park; (B) Lark Quarry Conservation Area—Eureka sample; (C) Lark Quarry Conservation Area—Hades Hill sample; (D) Isisford concretion; (E) GSQ Eromanga 1; (F) GSQ Longreach 1-1B; (G) GSQ McKinlay 1 (Sample 2 and 16); (H) GSQ Blackall 1; (I) GSQ Blackall 2; (J) Lovelle Downs/Elderslie Station (QM L311); (K) Alni Station; (L) Belmont Station. QLD, Queensland; NSW, New South Wales; ACT, Australian Capital Territory; VIC, Victoria; SA, South Australia; NT, Northern Territory; QM L, Queensland Museum Locality.

Full-size DOI: [10.7717/peerj.5513/fig-1](https://doi.org/10.7717/peerj.5513/fig-1)

early Cenomanian,  $\sim 103$ – $100.5$  Ma). Using the same approach, [Tucker et al. \(2016\)](#) were able to constrain the upper Mackunda Formation to the latest Albian ( $\sim 104$ – $102$  Ma). The onset of deposition of the lowest parts of the Winton Formation can therefore be no older than this. Fossil-bearing sites in the Lower Cretaceous portion of the Winton Formation, near Isisford, are stratigraphically much lower than those that occur in the Upper Cretaceous portion despite having similar modern altitudes to localities farther north (Winton area) and south (Eromanga) due to local faulting ([Tucker et al., 2013](#); [Tucker et al., 2017](#)). Whereas the younger sites occur in sediments indicative of a freshwater alluvial plain ([Exon & Senior, 1976](#); [Senior, Harrison & Mond, 1978](#); [Moore & Pitt, 1984](#); [Fielding, 1992](#); [Romilio, Tucker & Salisbury, 2013](#); [Tucker et al., 2017](#)), the older ones are thought to have been deposited in brackish waters in a tidally influenced fluvial-deltaic setting near the shores of the still present Eromanga Sea ([Berrell et al., 2014](#); [Syme et al., 2016](#); [Tucker et al., 2017](#)). Accordingly, [Tucker et al. \(2017\)](#) informally refer to this part of the Winton Formation as the ‘lower Winton Formation’. Earlier studies of core samples (e.g., [Pole, 1999](#); [Pole, 2000a](#); [Pole, 2000b](#)) did not have as well constrained dates, but demonstrated that there is up to 300 m of stratigraphic thickness of fossil-bearing Winton Formation deposition below the now dated 93 million year old sites, corroborating the ‘upper’ designation for this part of the formation proposed by [Tucker et al. \(2017\)](#). For example, the cores from

**Table 1** Key literature on the geology of the Winton Formation.

Topic	Reference	
Sedimentology	<i>Dunstan (1916)</i>	
	<i>Wopfner (1963)</i>	
	<i>Vine et al. (1967)</i>	
	<i>Casey (1970)</i>	
	<i>Senior &amp; Mabbutt (1979)</i>	
	<i>Coote (1987)</i>	
	<i>Fielding (1992)</i>	
	<i>Draper (2002)</i>	
	<i>Tucker et al. (2017)</i>	
Stratigraphy	<i>Dunstan (1916)</i>	
	<i>Exon &amp; Senior (1976)</i>	
	<i>Senior, Harrison &amp; Mond (1978)</i>	
	<i>Henderson &amp; Stephenson (1980)</i>	
	<i>Fielding (1992)</i>	
	<i>Draper (2002)</i>	
	<i>Gray, McKillop &amp; McKellar (2002)</i>	
	<i>Mavromatidis &amp; Hillis (2005)</i>	
	<i>Tucker et al. (2017)</i>	
Age	Palynology	<i>Dettmann &amp; Playford (1969)</i>
		<i>Burger (1986)</i>
		<i>Frakes et al. (1987)</i>
		<i>Helby, Morgan &amp; Partridge (1987)</i>
		<i>Burger (1990)</i>
		<i>Burger (1993)</i>
		<i>Partridge (2006)</i>
		<i>Clifford &amp; Dettmann (2005)</i>
		<i>Dettmann, Clifford &amp; Peters (2009)</i>
	<i>Dettmann, Clifford &amp; Peters (2012)</i>	
	Geo-chronological methods	<i>Bryan et al. (2012)</i>
		<i>Tucker et al. (2013)</i>
		<i>Tucker et al. (2016)</i>
		<i>Tucker et al. (2017)</i>
		<i>Bryan et al. (1997)</i>
<i>Bryan et al. (2000)</i>		
Source material	<i>Bryan et al. (2012)</i>	
	<i>MacDonald et al. (2013)</i>	
	<i>Tucker et al. (2013)</i>	
	<i>Tucker et al. (2016)</i>	
	<i>Tucker et al. (2017)</i>	
	<i>Bryan et al. (2012)</i>	
	<i>MacDonald et al. (2013)</i>	

(continued on next page)

Table 1 (continued)

Topic	Reference
Geomorphology and Tectonics	<i>Casey (1967a)</i>
	<i>Casey (1967b)</i>
	<i>Casey (1970)</i>
	<i>Hawkins &amp; Harrison (1978)</i>
	<i>Mathur (1983)</i>
	<i>Moss &amp; Wake-Dyster (1983)</i>
	<i>Moore &amp; Pitt (1984)</i>
	<i>Wopfner (1985)</i>
	<i>Finlayson, Leven &amp; Etheridge (1988)</i>
	<i>Murray, Scheibner &amp; Walker (1989)</i>
	<i>Green et al. (1991)</i>
	<i>Cartwright &amp; Lonergan (1997)</i>
	<i>Veevers (2000)</i>
	<i>Veevers (2006)</i>
	<i>Hower (2011)</i>
	<i>MacDonald et al. (2013)</i>
<i>Tucker et al. (2013)</i>	
<i>Moya et al. (2015)</i>	
<i>Tucker et al. (2016)</i>	

GSQ Maneroo, although shallower, are stratigraphically equivalent to deeper samples from GSQ Thargomindah (*Pole, 1999; Pole & Douglas, 1999; Pole, 2000a; Pole, 2000b*) as a result of uplift of the Maneroo Platform. Based on palynology, these units were likely deposited at close to the Albian-Cenomanian boundary, and appear to contain a different plant community that is overwhelmingly dominated by conifers (*Pole, 2000a*) distinct from the conifer-angiosperm co-dominant outcropping localities of the Upper Cretaceous portion of the Winton Formation (*McLoughlin, Pott & Elliott, 2010*).

## HYDROLOGY

It is clear from surface sediment localities in the greater Winton region that the Upper Cretaceous portion of the Winton Formation was derived from terrestrial and freshwater depositional environments (*Table 2; Tucker et al., 2013; Syme et al., 2016; Tucker et al., 2017*). This is also confirmed by the presence of freshwater gastropods (*Cook, 2005*) and freshwater bivalves (*Hocknull, 1997; Hocknull, 2000*). Although some earlier studies (e.g., *Thulborn & Wade, 1979; Thulborn & Wade, 1984*) proposed that lakes may have been present at sites such as near Lovelle Downs Station (QM L311) and the Lark Quarry Conservation Park, more recent work has shown lacustrine sedimentation did not occur either before and during the formation of the track-bearing surface at Lark Quarry (*Romilio, Tucker & Salisbury, 2013*) and that lakes were a relatively minor component of a landscape that primarily comprised channels and floodplains (*Tucker et al., 2013; Tucker et al., 2017*). The great thickness of the Winton Formation (up to 1,000 m in some areas; see *Tucker et al., 2013; Tucker et al., 2017*), suggests a massive river system that, over at least 10 million years

Era	Prd.	Epoch	Formation	Lithographic Units		
				SWC QLD	NEC QLD	
CZ	Q	Holocene & Pleistocene	Quaternary Alluvium			
Mesozoic	Cretaceous	Turonian	Manuka Subgroup	Winton Formation	★ upper	
		Cenomanian		Mackunda Formation	★ lower	
		Albian	Rolling Downs Group	Wilgunya Subgroup	Allaru Mudstone	
					Toolebuc Formation	
					Wallumbilla Formation	
		Aptian				
		Barremian				
		Hauterivian	Gadna-Owie Formation			
		Valanginian	Gadna-Owie Formation			
		Barriagian	Hooray Formation			

**Figure 2** Stratigraphic column showing the relative position of the Upper and Lower Cretaceous portions of the Winton Formation.

Full-size  DOI: [10.7717/peerj.5513/fig-2](https://doi.org/10.7717/peerj.5513/fig-2)

**Table 2** Key literature that informs the interpretation of the hydrology of the Upper Cretaceous portion of the Winton Formation.

Evidence type	Feature	Water chemistry	Flow rate	Winton citation
Sedimentology	Sedimentary structures such as crossbedding, ripple marks etc		Expansive fluvial flood-plain system, changing over time with waxing and waning flow to low flow.	<i>Tucker et al. (2013)</i> , <i>Tucker et al. (2017)</i>
	Lithology such as fine-grained sandstones, siltstones and mudstones		Low flow river with minor lacustrine component including oxbow lakes	<i>Tucker et al. (2013)</i>
	Lithology and sedimentary structures		Main channel deposits with flood plains and small lakes suggesting variability temporally and geographically	<i>Fielding (1992)</i>
Faunal	Gastropods <i>Melanoides sp.</i>	Freshwater but some species saline tolerant	Widely tolerant	<i>Cook (2005)</i>
	Bivalves <i>Alathyria jaqueti</i> <i>Megalovirgus wintonensis</i> <i>Hyridella macmichaeli</i>	Freshwater	Widely tolerant	<i>Hocknull (1997)</i> , <i>Hocknull (2000)</i>
	Lungfish <i>Metaceratodus ellioti</i> <i>Metaceratodus wollastoni</i>	Freshwater	Still to slow flow	<i>Kemp (1997)</i>
	Turtles	Freshwater	Widely tolerant	<i>Molnar (1991)</i>
	Crocodyliforms Crocodyliformes indet.	Fresh or saline	Widely tolerant	<i>Hocknull et al. (2009)</i>

and in various forms, filled the epicontinental Eromanga Sea, whilst during distinct periods, also flowing south-west as part of the continental Ceduna River system (*Lloyd et al., 2016*). The sediments directly associated with the plant-bearing horizons that are considered in this study were predominantly siltstone (*McLoughlin, Drinnan & Rozefelds, 1995*), with mudstone and dolostone also present at QM L311 (*Dettmann, Clifford & Peters, 2009*). This, added to the sedimentary features identified in outcrops, including current ripple cross-lamination, trough and tabular cross-stratification (*Tucker et al., 2013; Tucker et al., 2017*), and the probable ox-bow lakes (*Hocknull et al., 2009; Tucker et al., 2017*) suggests a meandering river system, and has been confirmed by the more detailed sedimentological assessments presented in *Tucker et al. (2017)*.

The movement, distribution, and quality of water and how these characters change through time, are important determinants of the biota and ecological processes in fluvial systems (e.g., *Gorman & Karr, 1978; Allan, 1995; Richter et al., 1996; Matthaei, Peacock & Townsend, 1999*). Thus, the composition of biota left by a system can inform interpretation of the hydrology of the system. The presence or absence of animals that have specific hydrological requirements are the most useful faunal evidence. The most informative amongst the fauna is the presence of lungfish tooth plates (*Kemp, 1997*). The Australian lungfish *Neoceratodus forsteri* Krefft, 1870, a living example from the family Neoceratodontidae to which the Cretaceous lungfish found in the Winton Formation belong, live in low-flow to still waters and require a low-flow regime in spring for egg



laying on shallow-water plants (*Espinoza, Marshall & McDougall, 2013*). The African lungfishes, of the genus *Protopterus* Owen, 1839, also live in low energy environments such as swamps, marshes and lakes, with a preference for shallow, inshore waters, with only some large adults found offshore in large lake systems (*Chapman et al., 1996; Goudswaard, Witte & Chapman, 2002*). The final genus of lungfish with extant examples, *Lepidosiren* from South America, also live in swamps and lakes (*Johansen & Lenfant, 1967*), cumulatively suggesting a conserved habitat preference. No evidence of lungfish has been found among the semi-articulated teleosts (*Berrell et al., 2014*) of the marginal marine-deltaic system that formed the Lower Cretaceous (upper Albian–lower Cenomanian) portion of the Winton Formation (*Tucker et al., 2017*), despite substantial sampling. This suggests that modern habitat preferences hold for Cretaceous lungfish (*Berrell et al., 2014*). Other key aquatic fauna from the Upper Cretaceous portion of the Winton Formation have wide tolerances amongst their modern analogues and so were not informative. For example, modern crocodiles such as *Crocodylus johnstoni* Krefft, 1873—an analogue for *Isisfordia duncani*—live in a wide range of hydrological environments (*Webb, Manolis & Sack, 1983*) including tidal and saline waters (*Messel et al., 1981*). The brackish conditions of the depositional setting associated with the Lower Cretaceous portion of the Winton formation that was inhabited by *I. duncani* (*Syme & Salisbury, 2018*) is consistent with this range of environmental tolerance. Freshwater turtles have differing responses to flow rates due to how they use the habitat, with some preferring higher velocity water flow and others slow (*Lenhart, Naber & Nieber, 2013*). A slow, but flowing freshwater hydrologic regime, such as a meandering river system, is in keeping with the geology of the Upper Cretaceous sediments, the composition of the aquatic fauna, and the gradual dip of the infilling flood plain.

## PALAEOCLIMATE

Previous palaeoclimatic assessments of the Winton Formation treated it as one palaeoenvironment, generally regarded as warm temperate (e.g., *Dettmann & Playford, 1969*), and although the presence of coal suggested humidity, *Dettmann et al. (1992)* interpreted the composition of the floral community to be indicative of overall dry conditions. The refined higher resolution dating of the floral and faunal communities and the addition of fossils discovered in the last 25 years, provides an opportunity to investigate the climate at a higher resolution.

Recently, quantitative methods have been applied to investigate the palaeoclimate of the Upper Cretaceous portion of the Winton Formation in greater detail (*Table 3*). These studies have shown that the palaeoclimate of these localities was generally warm (~16 °C mean annual temperature) and wet (>1,300 mm mean annual precipitation) as estimated by the foliar physiognomic methods of Leaf Area Analysis, Leaf Margin Analysis and Climate Leaf Analysis Multivariate Program, and mutual climatic range methods from the floral assemblage (*Fletcher, Moss & Salisbury, 2013; Fletcher et al., 2014b*). Although precipitation appears to have been high and seasonal, it was not as high as what is experienced in some high elevation modern forests today, nor with extremes of wet and dry as is associated with

**Table 3** Key literature that informs the palaeoclimatic interpretation of the Upper Cretaceous portion of the Winton Formation.

Climate variable		Estimate	Evidence source	Reference
Temperature	Mean annual	>16 °C	Crocodylians	<i>Hocknull et al. (2009)</i>
		>16 °C (tropical to subtropical)	Lungfish	<i>Kemp (1997)</i>
	Warmest mean monthly	16.4 °C ± 5 °C	Leaf Margin Analysis - LQ	<i>Fletcher, Moss &amp; Salisbury (2013)</i>
		16 °C ± 2 °C	CLAMP - LQ	<i>Fletcher, Moss &amp; Salisbury (2013)</i>
		13.6 ± 2 °C	CLAMP - QM	<i>Fletcher et al. (2014b)</i>
		15.9 ± 1.2 °C	Bioclimatic Analysis	<i>Fletcher et al. (2014b)</i>
		20.3 ± 2 °C	Bioclimatic Analysis	<i>Fletcher et al. (2014b)</i>
		21.2 ± 2.7 °C	CLAMP - QM	<i>Fletcher et al. (2014b)</i>
		>17.5 °C	Freshwater turtles	<i>Molnar (1991)</i>
		Coldest mean monthly	10.3 ± 1 °C	Bioclimatic Analysis
Growth Season Length	6.7 ± 3.4 °C	CLAMP - QM	<i>Fletcher et al. (2014b)</i>	
	9 months	CLAMP - LQ	<i>Fletcher, Moss &amp; Salisbury (2013)</i>	
Precipitation	Mean annual	7.8 ± 1.1 months	CLAMP - QM	<i>Fletcher et al. (2014b)</i>
		1,321 mm + 413 mm–315 mm	Leaf Area Analysis –LQ	<i>Fletcher, Moss &amp; Salisbury (2013)</i>
	Growth season	1,646 ± 370 mm	Bioclimatic Analysis	<i>Fletcher et al. (2014b)</i>
		1,073 ± 483 mm	CLAMP - LQ	<i>Fletcher, Moss &amp; Salisbury (2013)</i>
		1,289 ± 483 mm	CLAMP - QM	<i>Fletcher et al. (2014b)</i>
		3 driest months	268 ± 137 mm	CLAMP - QM
3 wettest months	630 ± 206 mm	CLAMP - QM	<i>Fletcher et al. (2014b)</i>	
Inter and intra-annual variability	Wet season double dry season precipitation	CLAMP	<i>Fletcher et al. (2014b)</i>	
	‘High seasonality’	Ring markedness index	<i>Fletcher, Moss &amp; Salisbury (2015)</i>	
	High inter-annual variability	Mean sensitivity >0.3 (ring index)	<i>Fletcher, Moss &amp; Salisbury (2015)</i>	
Sea Surface temperatures	‘Warm’	Dolichosaurs	<i>Scanlon &amp; Hocknull (2008)</i>	

the modern monsoon. For example, in modern Darwin, which is subject to monsoonal weather systems, the cumulative three wettest months receive 1,120 mm on average and the three driest receive 8.1 mm (BOM, <http://www.bom.gov.au/climate/data-services/>, date accessed: 26/01/2014). Compare this with the Upper Cretaceous portion of the Winton Formation, which is estimated to have received 630 ± 206 mm during the three wettest months and 268 ± 137 mm during the three driest months (*Fletcher et al., 2014b*). The growth indices of the fossil wood also indicate that climate variables differed between years to the extent that it had a notable influence on ring width in the podocarp-like wood at the locality (*Fletcher, Moss & Salisbury, 2015*). This variability appears to be non-random and oscillatory, and may indicate that phenomena similar to the Pacific Decadal Oscillation (*Mantua & Hare, 2002; McGowan et al., 2009*) were driving patterns of climate in the early Late Cretaceous.

In addition to botanical indicators, elements of the fauna are climatically informative. Crocodyliform remains have been reported in the Upper Cretaceous portion of the Winton

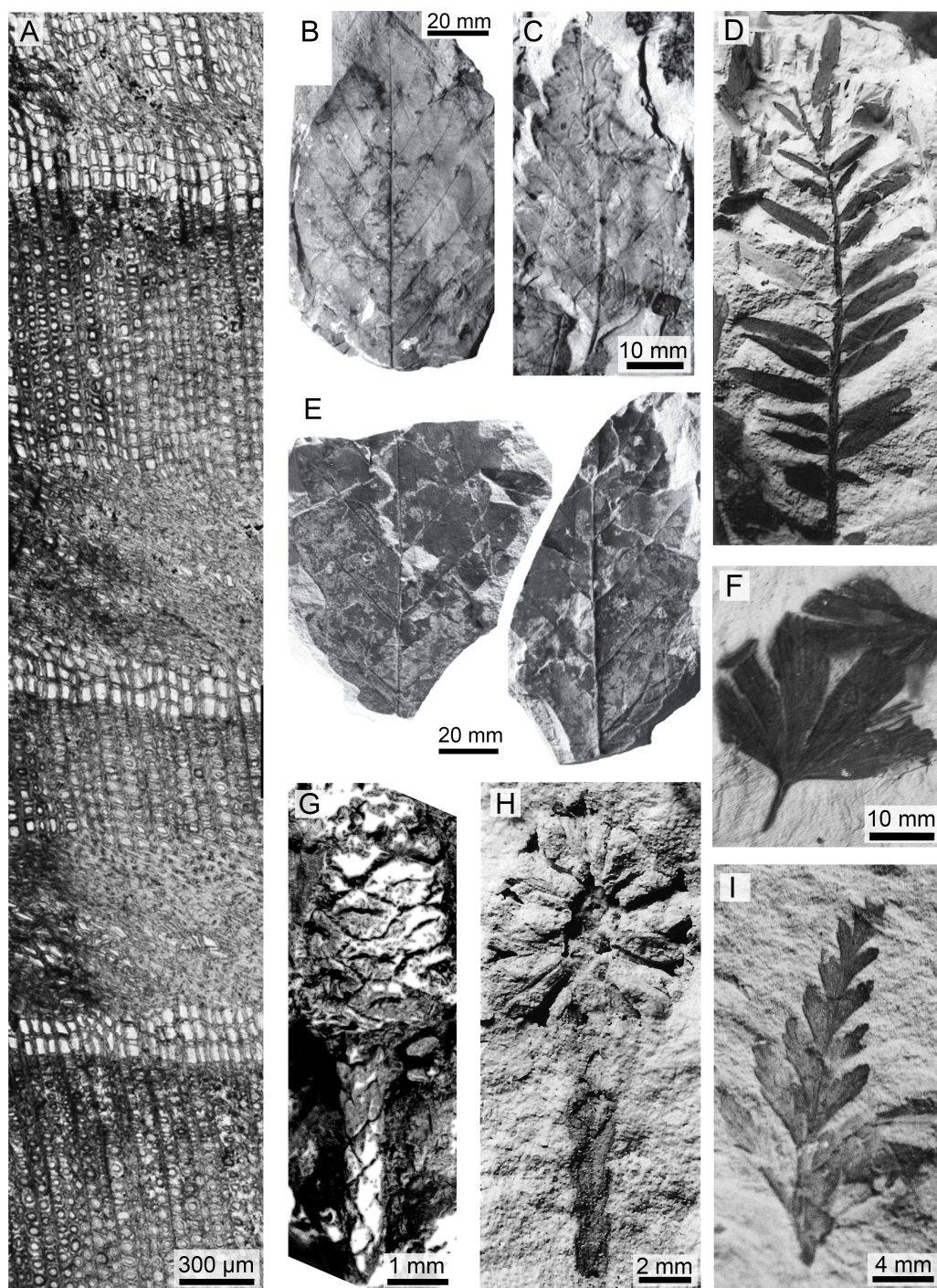
Formation at AOD L-85, on Elderslie Station approximately 60 km north-west of Winton ([Hocknull et al., 2009](#)). Assuming this material is assignable to *Isisfordia duncani* or a closely related species, and if eusuchians are accepted as paleothermometers ([Markwick, 1994](#); [Markwick, 1998](#)) their presence supports a MAT of  $\geq 16$  °C. Modern lungfish, as analogues for *Metaceratodus ellioti* ([Kemp, 1997](#)) from the Upper Cretaceous portion of the Winton Formation, have a distribution limited to the tropics and subtropics. Freshwater turtles from the upper portion of the Winton Formation ([Molnar, 1991](#)) also suggest warmth as even cold-adapted modern turtles require warmest mean monthly temperatures over 17.5 °C ([Tarduno et al., 1998](#)). Finally, the presence of dolichosaurs in the Upper Cretaceous portion of the Winton Formation suggests sea surface temperatures conducive to oceanic dispersal, in keeping with warming through to the end of the Turonian ([Scanlon & Hocknull, 2008](#)).

## FLORA

### Macrofloral composition

Although the geological evidence suggests a broadly connected and coeval sedimentary layer, some of the plant-bearing fossil localities in the Upper Cretaceous portion of the Winton Formation are over 100 km apart and are not likely to represent one continuous flora. Although regarding the Winton Formation as a whole, [McLoughlin, Pott & Elliott \(2010\)](#) noted the variation in plant assemblages across sites in the 16 major studies of the Winton macroflora. Indeed, the Lark Quarry locality conifer leaf impressions suggest a dominance of multiple species of araucarians ([Fletcher, Moss & Salisbury, 2013](#)), while at QM L311 *Protophylladoxylon owensii* Fletcher et al., with likely podocarp affinities, appears dominant, both in terms of wood remains and from a frequency count of pollen ([Dettmann, Clifford & Peters, 2009](#); [Fletcher, Moss & Salisbury, 2015](#)). This suggests a heterogeneous distribution of plant communities across the landscape ([Fig. 3](#)).

The podocarp-dominated plant community at QM L311 is of particular palaeoecological interest as such communities are rare in modern systems. In modern forests podocarps are universally slow growing and are usually only a significant component in communities growing on nutrient-poor soils ([Coomes & Bellingham, 2011](#)). These species mitigate the problem of low nutrient availability by limiting mineral loss through long leaf retention times ([Monk, 1966](#)) and through nutrient uptake via endomycorrhizal symbionts ([Baylis, McNabb & Morrison, 1963](#); [Baylis, 1969](#); [Russell, Bidartondo & Butterfield, 2002](#)). Indeed, [Baylis, McNabb & Morrison \(1963\)](#) found that on poor nutrient soils, podocarps are dependent on mycorrhizal fungi. [Cantrill & Falcon-Lang \(2001\)](#) reported impressions of nodules on roots similar to those seen in podocarps as early as the Albian. Thus, it is likely that associations between conifer roots and fungi were present in the Late Cretaceous. In addition, it was found that *P. owensii* had a likely leaf retention time (~3–6 years) similar to modern podocarps, including those that grow on low nutrient soils ([Fletcher, Moss & Salisbury, 2015](#)). However, the fluvial plains of volcanically derived sediments that constitute the upper portion of the Winton Formation were unlikely to be low in nutrients, and thus modern centres of podocarp diversity, such as New Caledonia ([Contreras-Medina & Vega, 2002](#); [Mutke & Barthlott, 2005](#)) are unlikely to be good analogues.



**Figure 3** A sample of the variety of taxa, organs, and preservation of plant fossils from the Upper Cretaceous portion of the Winton Formation. (A) A transverse section of *Protophyllocladoxylon owensii* Fletcher et al. showing repeated crushing in early wood, QM F44336 (Fig. 2A; Fletcher, Moss & Salisbury, 2015)<sup>1</sup>; (B) Winton Formation Leaf morphotype B, QM F32459 (Fig. 3D; Fletcher, Moss & Salisbury, 2013); (C) Winton Formation Leaf morphotype C, QM F32510 (continued on next page...)

Full-size  DOI: 10.7717/peerj.5513/fig-3

**Figure 3 (...continued)**

(Fig. 2D; [Fletcher, Moss & Salisbury, 2013](#)); (D) *Araucaria* sp. cf. *A. mesozoica* Walkom foliage, QM F32561 (Fig. 8F; [McLoughlin, Drinnan & Rozefelds, 1995](#)); (E) Part and counterpart of leaf impression from Lark Quarry Conservation Area, UQL-LQ-III 24 (Fig 2A; [Fletcher, Moss & Salisbury, 2013](#)); (F) *Ginkgo wintonensis* McLoughlin et al. holotype leaf impression, QM F32478b (Photo: T.F.); (G) *Austrosequoia wintonensis* Peters and Christophel, silicified ovulate cone and terminal leaves, QM F9509 (Fig 2; [Peters & Christophel, 1978](#)); (H) cf. *A. wintonensis* longitudinal imprint of a terminal cone and stem with scale-like leaves, QM F3250 (Fig. 11G; [McLoughlin, Drinnan & Rozefelds, 1995](#)); (I) *Sphenopteris* sp. fragmentary frond, UQL-LQ-III 2 (Photo: T.F.).<sup>1</sup> Reprinted from *Palaeogeography, Palaeoclimatology, Palaeoecology*, 417, T. Fletcher, P.T. Moss, S.W. Salisbury, Wood growth indices as climate indicators from the Upper Cretaceous (Cenomanian–Turonian) portion of the Winton Formation, Australia, 35–42., Copyright 2015, with permission from Elsevier.

The exceptions to this low-nutrient rule are the three podocarp species that dominate the forests of the alluvial flood plains in south-western New Zealand: *Dacrycarpus dacrydioides* (A.Rich.) de Laub., *Prumnopitys taxifolia* (Sol. ex D.Don) de Laub., and *Podocarpus totara* G.Benn. ex D.Don ([Coomes & Bellingham, 2011](#)). The success of these species can be linked to catastrophic disturbances (earthquakes and floods) by their single age stands ([Duncan, 1991](#); [Duncan, 1993](#); [Wells, Duncan & Stewart, 2001](#)) and by the effect of long periods without disturbance. Where [Wardle \(1974\)](#) was able to locate undisturbed forest, canopy spaces generated by windfall etc. of the dominant *D. dacrydioides* were replaced by tree ferns and broad-leafed angiosperm species. Otherwise, a frequency of disturbance in the order of hundreds of years is sufficient for these podocarps to remain dominant due to their longevity ([Coomes & Bellingham, 2011](#)). [Holloway \(1954\)](#) described these resulting podocarp forests as patchworks containing many kinds of podocarp communities, some of which were specialised to particular sites and soils, as well as different severity of disturbance ([Duncan, 1993](#)).

Given that this portion of the Winton Formation comprises alluvial sediments that are generally considered nutrient rich, it seems likely the podocarp-dominated forests were driven by successional patterns as part of a broader disturbance regime. Thus, despite the differences in climate, the south-western New Zealand podocarp forests may be the best modern analogue for the Upper Cretaceous podocarp-dominated flora. That no modern flora is a good analogue for the Winton flora may not indicate taphonomic bias, but rather that the role of podocarps in the depositional setting of the Upper Cretaceous portion of the Winton Formation is taken by tall woody angiosperms in modern systems.

A Cretaceous example of a similarly heterogeneous community structure, with a dominant podocarp component, is described by [Falcon-Lang, Cantrill & Nichols \(2001\)](#). Within the Lower Cretaceous (upper Albian) Triton Point Member of the Neptune Glacier Formation on Alexander Island, there appears to be two distinct communities based around a braided alluvial plain system and a meander-belt coastal plain, yet both comprise a number of sub-communities: broken podocarp woodland, gymnosperm-fern-angiosperm thickets, cycadophyte-conifer scrub, and liverwort mats in the braid-plain system, and podocarp-araucarian climax forest, fern thickets/conifer woodland, and ginkgo-conifer scrub in the coastal meander-belt system ([Falcon-Lang, Cantrill & Nichols, 2001](#)). Although the composition of the plant communities and the kind of fluvial setting in

the Upper Cretaceous portion of the Winton Formation is somewhat different from these, it provides a framework to understand the difference in floral composition between sites. The general low diversity may suggest we do not have climax forest preserved amongst the Upper Cretaceous plant localities, although such sites may have existed within the palaeo-landscape. QM L311 may represent an ecosystem similar to the broken podocarp woodland of *Falcon-Lang, Cantrill & Nichols (2001)*, or the podocarp dominated alluvial plains and wetlands of south-western New Zealand (*Wardle, 1974; Duncan, 1991; Duncan, 1993; Wells, Duncan & Stewart, 2001*).

Compared with the majority of sites in the upper portion of the Winton Formation, QM L311 is also unusual in its preservation and lithology. The majority of sites of this age are now thought to have been deposited in meandering river systems and flood plains, comprising predominantly leaf impressions in siltstone. In contrast, the cones, fruits and palynomorphs of QM L311 are silica-replaced and preserved in silica-rich claystone, suggesting a very slow flow or lacustrine environment. Although the taphonomic history of these localities has not been systematically evaluated, it appears the material was deposited in a silica-rich, anaerobic environment (*Dettmann, Clifford & Peters, 2009*). Given there is no evidence for volcanic or hydrothermal conditions that are thought to cause rapid silicification (*Spicer, 1991; Locatelli, 2017*), it is likely that anaerobic conditions were stable such that decay was slow enough to allow slow silicification. This suggests a lacustrine deposition and requires that either the lake did not overturn and was deep compared to its surface area (*Hutchinson, 1957*) or that it had a high perimeter to surface area, resulting in high organic input and limited surface gas exchange (*Spicer, 1991*). Given that the floral material entering a lake generally reflects the waterside flora (*Greenwood, 1991*), QM L311 likely reflects a local snapshot of the vegetation. Some podocarps survive well in swampy, poorly drained soils that may have occurred around the lake edge, and so may dominate the local signal.

The somewhat more diverse leaf impression assemblages of the Lark Quarry plant localities and of the localities from which *McLoughlin, Drinnan & Rozefelds (1995)* and *McLoughlin, Pott & Elliott (2010)* sourced material, may reflect more diverse, perhaps more mature, stands in which succession has taken place, more intensely sampled material, the lumping of these sites of similar deposition environments, or the increased natural sampling of a flora that occurs in a stream system as opposed to a lake (*Burnham, 1989; Greenwood, 1991*). Fluvial systems are biased to the river edge flora (*Christophel & Greenwood, 1988*) and thus the higher representation of angiosperm leaves may derive from their dominance of that niche. Early angiosperms are considered weedy in their growth habit (*Royer et al., 2010*) and common to disturbed, moist sites such as stream edges (*Feild et al., 2004; Feild & Arens, 2005*). Although most of the angiosperm leaf impressions cannot be precisely identified, many are assigned to Fagales, with the most common reminiscent of Cretaceous *Nothofagus* from New Zealand, and another to a Cretaceous leaf type from New Zealand tentatively assigned to Betulaceae (*McLoughlin, Drinnan & Rozefelds, 1995*). According to recent molecular studies (*Xiang et al., 2014*), the upper portion of the Winton Formation was deposited at approximately the time of the first diversification of Fagales, but prior to the divergence of Nothofagaceae and Betulaceae proper. The broad distribution of the

Fagales, uncertainty in assignment and timing of diversification generally preclude further ecological interpretation based on these identifications, as opposed to those based on the leaf traits for early angiosperms more broadly. Similarly, the flower *Lovellea wintonensis* from QM L311, is assigned to Laurales, a diverse group with representatives from the tropics to the temperate regions. The higher representation of araucarians over podocarps in that setting may indicate very long leaf retention times in the podocarp species thus biasing against their proportional preservation, that these localities had not been subject to disturbance, for example by flood, as recently as QM L311 and thus succession taken place, or that the fluvial flora's soils were better drained than those near QM L311. Either way, the discrepancy in floras is likely a true signal, in that it represents a heterogeneous landscape comprising various plant sub-communities, likely determined by abiotic factors such as disturbance, depositional environment and local topography.

### Diversity

The apparent diversity of the macroflora of the Upper Cretaceous portion of the Winton Formation (<30 species; Table 4), is low when compared with many similar latitude and high latitude broadly coeval floras of both the Northern (Upper Cretaceous (Turonian) Raritan Formation, USA – 250+ species (*Knowlton, 1919; Martínez-Millán, Crepet & Nixon, 2009* and references within); Upper Cretaceous (Cenomanian–Turonian) Sarbay flora, Kazakhstan – 100+ taxa (*Frumin & Friis, 1999; Frumin, Eklund & Friis, 2004*); Upper Cretaceous (Turonian) Novaya Sibir', Russian High Arctic – ~50 species (*Herman & Spicer, 2010*)) and Southern Hemisphere ('mid'-Cretaceous (Late Albian–Cenomanian) Warder Formation, New Zealand – 57+ species (*Parrish et al., 1998*); Lower Cretaceous (upper Albian) Triton Point member of the Neptune Glacier Formation, Antarctica – 67 species (*Falcon-Lang, Cantrill & Nichols, 2001*)) especially if accounting for the latitudinal biodiversity gradient (Fig. 4). The most similar comparison found is that of the Upper Cretaceous portion of the Winton Formation flora to the Upper Cretaceous (Cenomanian–Coniacian) upper Mata Amarilla portion of Mata Amarilla Formation, Argentina. The two floras compare well in sedimentary environment—an inland flood-plain—and richness of angiosperm morphotypes—10 morphotypes—though *Iglesias et al. (2007)*, note the large difference in the proportion of plant groups preserved (gymnosperms more frequent in the Winton flora) and differences in the size, shape, and diversity of forms of the angiosperm leaves.

### Causes of low diversity

A potential cause of the low diversity is sampling intensity. *Fletcher, Moss & Salisbury (2013)* investigated specimens from two new sites at Lark Quarry Conservation Area (Fig. 1; *Romilio & Salisbury, 2011*) and found no new taxa when compared with the known <30 species from 12 sites in the Upper Cretaceous portion of the Winton Formation (Table 4). Ideally, rarefaction would be conducted to assess the impact of sampling; however, not all of the information necessary for comparative analysis is available. In a simplified system, if additional, as-yet unidentified species were present in the total sample pool at Lark Quarry, to have a significant probability ( $\geq 5\%$ ) of finding none of them in

**Table 4** Described elements of the macroflora of the Upper Cretaceous portion of the Winton Formation.

Fossil type	Taxonomic group	Name	Reference
Wood	Pinophyta; Podocarpaceae	<i>Protophyllocladoxylon owensii</i>	Fletcher et al. (2014a)
Flower	Magnoliophyta; Laurales	<i>Lovellea wintonensis</i>	Dettmann, Clifford & Peters (2012)
Cone	Pinophyta; Cupressaceae	<i>Austrosequoia wintonensis</i>	Peters & Christophel (1978)
	Pinophyta; Araucarian	<i>Emwadea microcarpa</i>	Dettmann, Clifford & Peters (2009)
Leaf impression	Pterophyta	<i>Aff. Lygodium?</i>	Peters & Christophel (1978)
	Pterophyta; Osmundaceae	<i>Phyllopteroides macclymontae</i>	McLoughlin, Drinnan & Rozefelds (1995), McLoughlin, Pott & Elliott (2010)
	Pterophyta; ?Osmundaceae	<i>Cladophlebis</i> sp.	McLoughlin, Drinnan & Rozefelds (1995)
	Pterophyta	<i>Microphyllopteris</i> sp. cf. <i>M. gleichenoides</i>	McLoughlin, Drinnan & Rozefelds (1995)
	Pterophyta	<i>Sphenopteris</i> sp. cf. <i>S. warragulensis</i>	McLoughlin, Drinnan & Rozefelds (1995)
	Pterophyta	<i>Sphenopteris</i> sp.	McLoughlin, Drinnan & Rozefelds (1995)
	Pterophyta	<i>Indeterminate fern pinnule</i>	McLoughlin, Drinnan & Rozefelds (1995)
	Ginkgoales	<i>Ginkgo wintonensis</i>	McLoughlin, Drinnan & Rozefelds (1995)
	Pinophyta	<i>c.f. Austrosequoia wintonensis</i>	Peters & Christophel (1978); McLoughlin, Drinnan & Rozefelds (1995) McLoughlin, Pott & Elliott (2010)
	Pinophyta; Araucariaceae	<i>Araucaria</i> sp. (scale-like leaves)	Bose (1955) McLoughlin, Pott & Elliott (2010)
	Pinophyta; Araucariaceae	<i>Araucaria</i> sp. (strap-like leaves) cf. <i>A. mesozoica</i>	White (1974) Dettmann & Clifford (1992) McLoughlin, Drinnan & Rozefelds (1995)
	Pinophyta; Araucariaceae	<i>Araucaria</i> cf. <i>fletcheri</i> (awl-like leaves)	Bose (1955) McLoughlin, Pott & Elliott (2010)
	Pinophyta; ?Podocarpaceae	<i>Elatocladus plana</i>	McLoughlin, Drinnan & Rozefelds (1995)
	Pentoxylales	<i>Taeniopteris</i> sp.	McLoughlin, Drinnan & Rozefelds (1995)
	Bennetitales	<i>Otozamites</i> sp. cf. <i>Otozamites bengalensis</i>	McLoughlin, Pott & Elliott (2010)
	Bennetitales	<i>Ptilophyllum</i> sp.	McLoughlin, Pott & Elliott (2010)
Magnoliophyta; Magnoliopsida	Angiosperm morphotype A	McLoughlin, Drinnan & Rozefelds (1995)	
Magnoliophyta; Magnoliopsida; Hamamelidae; ?Fagales	Angiosperm morphotype B	McLoughlin, Drinnan & Rozefelds (1995)	
Magnoliophyta; Magnoliopsida; Hamamelidae; ?Fagales	Angiosperm morphotype C 'reminicent of' <i>Nothofagus</i> from New Zealand (Pole, 1992)	McLoughlin, Drinnan & Rozefelds (1995)	
Magnoliophyta; Magnoliopsida; Hamamelidae; ?Fagales	Angiosperm morphotype D	McLoughlin, Drinnan & Rozefelds (1995)	
Magnoliophyta; Magnoliopsida; Hamamelidae; ?Fagales	Angiosperm morphotype E	McLoughlin, Drinnan & Rozefelds (1995)	
Magnoliophyta; Magnoliopsida; Hamamelidae; ?Fagales	Angiosperm morphotype F	McLoughlin, Drinnan & Rozefelds (1995)	

(continued on next page)



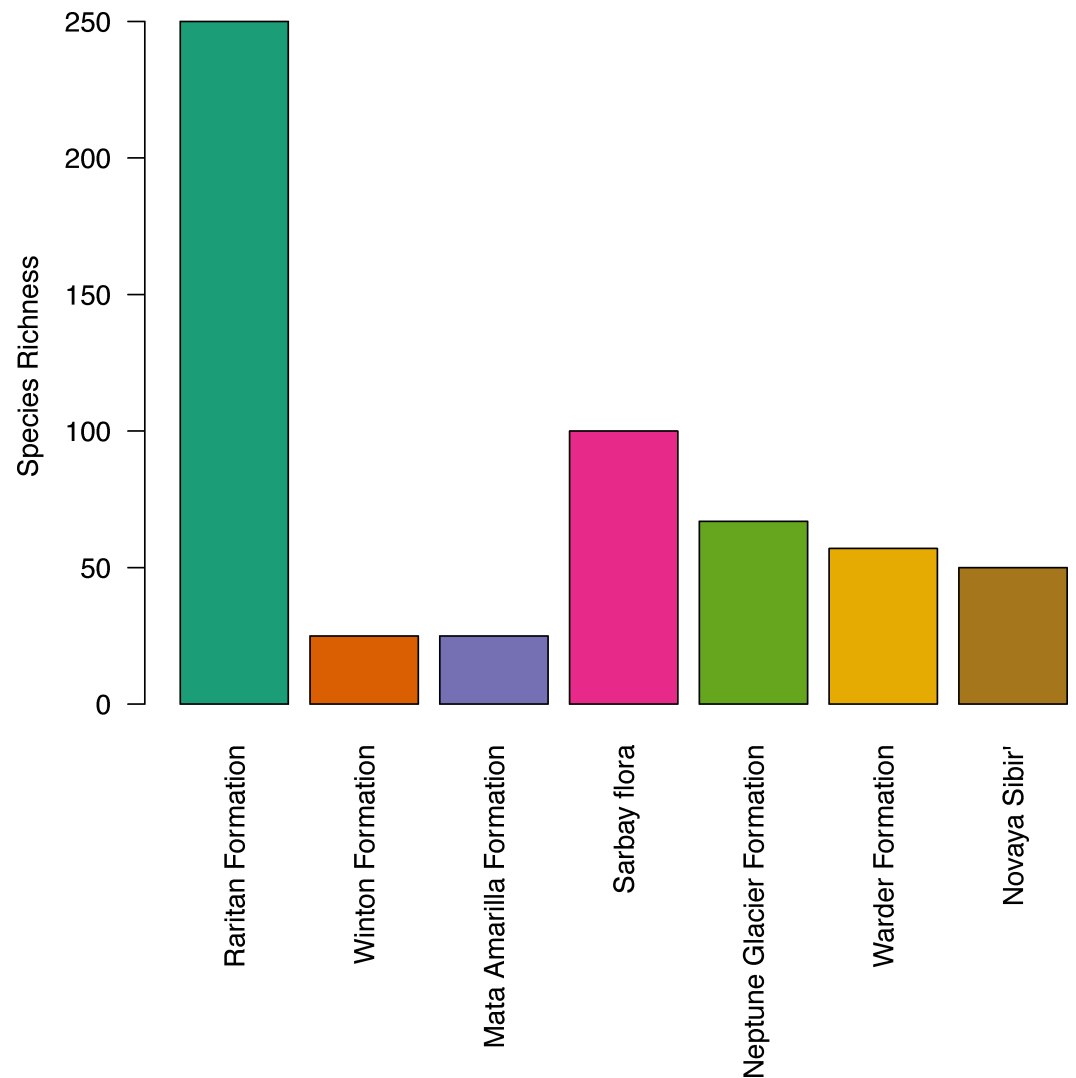
Table 4 (continued)

Fossil type		Taxonomic group	Name	Reference
		Magnoliophyta; Magnoliopsida; Hamamelidae; ?Fagales	Angiosperm morphotype G Similar to a NZ specimen tentatively assigned to Betulaceae (Pole, 1992)	McLoughlin, Drinnan & Rozefelds (1995)
		Magnoliophyta; Magnoliopsida; Hamamelidae; ?Fagales	Angiosperm morphotype H	McLoughlin, Drinnan & Rozefelds (1995)
Other	Axes and nodal di- aphragms	Magnoliophyta - dicotyledon Equisitales	Angiosperm morphotype I <i>Equisetites</i> sp.	McLoughlin, Pott & Elliott (2010) Bose (1955), McLoughlin, Pott & Elliott (2010)
	False trunk	Pterophyta; Tempskyaceae	<i>Tempskya judithae</i>	Clifford & Dettmann (2005)
	Gammae	Hepaticales	<i>Marchantites marguerita</i>	Dettmann & Clifford (2000)

150 samples, the new species would need to comprise less than 2% of the total sample pool ( $0.98^{150} = 0.048$ ). By comparison, *Iglesias et al.*'s (2007) revision of the flora from the Cenomanian–Coniacian Mata Amarilla Formation report on >500 leaf specimens, >300 from the Mata Amarilla Level. While the use of microfossils in palaeoecological studies of diversity is an area in need of greater research (*Birks et al., 2016*), the probability suggests it is reasonable that other factors may have contributed to the apparent low diversity of the flora in the Upper Cretaceous portion of the Winton Formation.

Taphonomy also must be accounted for, which may bias preservation of parts of a palaeo-landscape over others, and can result in a low apparent diversity of the death assemblage. The Turonian Raritan Formation (*Christopher, 1979*), for example, exhibits exquisite preservation in clays that lends itself to identification and quantification of the diversity of the flora in detail, while the Upper Cretaceous Winton Formation flora is variable in preservation, with many sites consisting of partial leaf impressions in silts or leaf impressions that are difficult to prepare whole (cf. QM L311). This argument cannot be made for all of the sites to which we have compared the Winton Formation flora herein; the plant materials in upper Albian Triton Point Member of Alexander Island, Antarctica, for example, exhibit similar preservation with no cuticle present and complete specimens rare (*Cantrill & Nichols, 1996*).

The effect of taphonomy can be investigated by comparing apparent diversity of different types of fossils. If we compare the angiosperm macrofossil record from the Upper Cretaceous portion of the Winton Formation to angiosperm pollen regionally from borehole studies, it seems pollen is recording a higher diversity (~30 angiosperm palynomorphs; *Burger, 1993*). Yet difficulty assessing ages of the samples in light of new understanding of the temporal deposition of the Winton Formation, may mean this is a sum of 10 million years of deposition, artificially inflating the apparent diversity. Instead we compared different kinds of fossils at one site: pollen, wood and leaf impressions. For example, at QM L311, all of the wood is assigned to the podocarp, *Protophyllocladoxylon owensii* (*Fletcher et al., 2014a*) and in agreement, 87% of the pollen is referred to Podocarpaceae (*Dettmann, Clifford & Peters, 2009*). Pollen is considered to represent the diversity of the palaeo-landscape, even if not at a 1:1 ratio due to differences



**Figure 4** Histogram of species richness at fossil sites referred to in the text, from low to high latitude.

Full-size  DOI: [10.7717/peerj.5513/fig-4](https://doi.org/10.7717/peerj.5513/fig-4)

in pollen syndromes and low morphological distinctiveness within some groups (*Birks et al., 2016*). In a modern system, different genera of podocarp pollen were found to either truly represent the prevalence or under-represent the prevalence of podocarps in a system (*Pocknall, 1978*). Thus, although a taphonomic influence on the apparent diversity cannot be disproven, the congruence of microfossil and macrofossil evidence, and the fine sediments and preservation of microfossils at some localities, suggests other factors may also be causing the apparent low diversity.

Of the 12 factors that may influence diversity in modern systems compiled from *Brown (1988)*, *Roy et al. (1998)*, and *Krebs (2001)*, two palaeoclimatic influences are proposed to have affected the diversity of the flora of the Upper Cretaceous portion of the Winton Formation in addition to taphonomy and sampling: super-annual climatic variability—in particular a potential multi-year cycle of wet and dry years—and related to this cycle,

disturbance through flood events. Evidence for these influences in the environment comes from the sedimentary geology of the region (Tucker *et al.*, 2013), growth indices in fossil wood (Fletcher, Moss & Salisbury, 2015), comparison of the fossil floral community composition with modern ecosystems (e.g., Holloway, 1954; Duncan, 1991; Duncan, 1993; Jaffré, 1995) and similarly low angiosperm diversity represented in the flood plain ecosystem of the coeval Mata Amarilla Formation (Iglesias *et al.*, 2007). Whilst low diversity within a locality may frustrate some attempts to understand the palaeoenvironment e.g., diversity thresholds for using certain leaf physiognomic methods for palaeoclimatology (Spicer, Herman & Kennedy, 2005) the low diversity itself may be a palaeoenvironmental indicator, if one can account for the effects of sampling intensity and taphonomy. Future studies, particularly of well constrained palynological samples, may disprove the hypothesis posited here that the flora of the Upper Cretaceous portion of the Winton Formation was low diversity; however, evidence from the sediments, wood and analogous floral communities are consistent with a diversity depressed by disturbance in the form of floods, and super-annual climate variability.

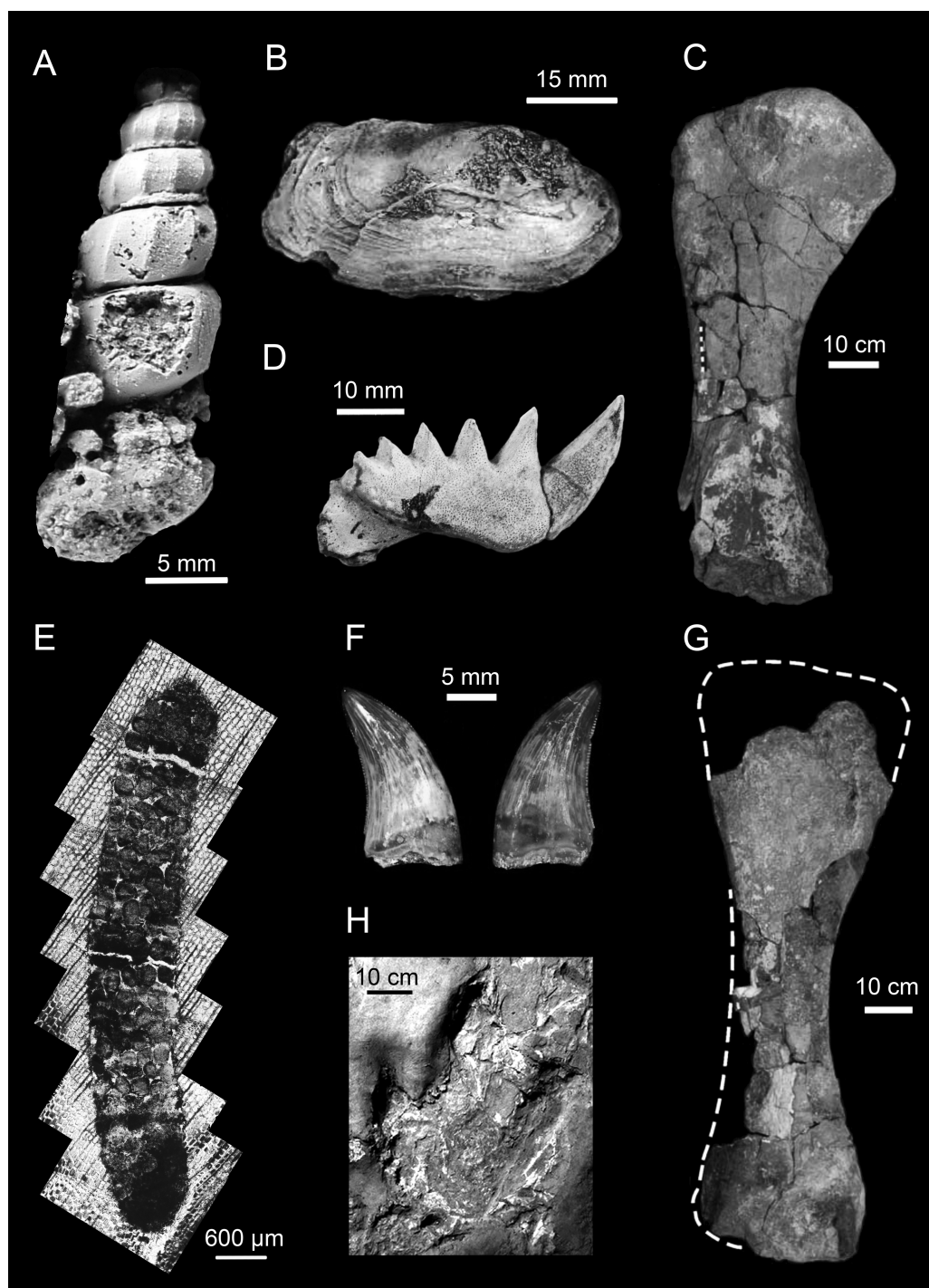
## FAUNA

The current faunal list of the Upper Cretaceous (Cenomanian–Turonian) portion of the Winton Formation (Table 5; Fig. 5) includes evidence of invertebrates such as dragonflies and mecopteroids (Jell, 2004), freshwater bivalves (Hocknull, 1997; Hocknull, 2000), freshwater gastropods (Cook, 2005), and oribatid mites (Fletcher & Salisbury, 2014). Vertebrates are represented by turtles (Molnar, 1991), eusuchian crocodyliforms (Salisbury *et al.*, 2006), semi-aquatic lizards (Scanlon & Hocknull, 2008), dipnoan lungfishes (Kemp, 1997), and dinosaurs such as small and large ornithopods (Thulborn & Wade, 1979; Thulborn & Wade, 1984)—represented by a single tooth (see Hocknull & Cook, 2008) and primarily through tracks (see Romilio & Salisbury, 2011; Romilio, Tucker & Salisbury, 2013; Thulborn, 2013; Romilio & Salisbury, 2014; Thulborn, 2017)—an indeterminate ankylosaurian (Leahey & Salisbury, 2013), titanosauriform sauropods (Coombs & Molnar, 1981; Molnar, 2001; Molnar & Salisbury, 2005; Hocknull *et al.*, 2009; Molnar, 2010; Molnar, 2011; Poropat *et al.*, 2015a; Poropat *et al.*, 2015b; Poropat *et al.*, 2016) and a megaraptoran theropod (Hocknull *et al.*, 2009; Agnolin *et al.*, 2010; Benson *et al.*, 2010; White *et al.*, 2012; White *et al.*, 2013; White *et al.*, 2016).

As well as the climatic (see Palaeoclimatology) and hydrological (see Hydrology) needs of the animals for which we have modern analogues, the environmental preferences of some of the groups that have no modern analogue (e.g., non-avian dinosaurs) are also informative. Some nodosaurid ankylosaurs seem to have a broad range of ecological tolerances (Coombs & Deméré, 1996) and examples of ankylosaurians can be found living from polar latitudes (Molnar & Wiffen, 1994) to at least sub-tropical areas (Amiot *et al.*, 2010) and from riparian (Wang *et al.*, 1989; Amiot *et al.*, 2010) to coastal environments (Molnar & Wiffen, 1994; Coombs & Deméré, 1996; Petti *et al.*, 2010). However, what seems to link them is a preference for wet and well-vegetated environments (Vickaryous, Maryanska & Weishampel, 2004). Three titanosaurian and one non-titanosaurian titanosauriform are currently recognised from the Upper Cretaceous portion of the Winton Formation

**Table 5** Described elements of the fauna of the Upper Cretaceous portion of the Winton Formation.

Fossil type		Taxonomic group	Name	Reference	
Body fossil	Mollusca	Bivalvia	<i>Alathyria jaqueti</i>	<i>Hocknull (1997)</i>	
			<i>Megalovirgus wintonensis</i>	<i>Hocknull (2000)</i>	
			<i>Hyridella macmichaeli</i>		
	Insecta	Gastropoda	<i>Melanooides</i> sp.	<i>Cook (2005)</i>	
			Mecoptera	2 mecopteroid insects	<i>Jell (2004)</i>
				Odonata; Anisoptera	1 dragonfly
	Osteichthyes	Sarcopterygii; Dipnoi	<i>Metaceratodus ellioti</i>	<i>Kemp (1997)</i>	
			<i>Metaceratodus wollastoni</i>		
	Reptilia	Squamata; Pythonomorpha; ?Dolichosauridae	cf. <i>Coniasaurus</i>	<i>Scanlon &amp; Hocknull (2008)</i>	
			Crocodyliformes; Mesoeucrocodylia; Eusuchia	Crocodyliformes indet.	<i>Hocknull et al. (2009)</i>
	Reptilia; Dinosauria	Megaraptora	<i>Australovenator wintonensis</i>	<i>Hocknull et al. (2009)</i>	
			Titanosauriformes; Titanosauria	<i>Diamantinasaurus matildae</i>	<i>Hocknull et al. (2009)</i> <i>Poropat et al. (2015b)</i>
				<i>Savannasaurus elliotorum</i>	<i>Poropat et al. (2016)</i>
Titanosauriformes; Somphospondyli			unnamed	<i>Coombs &amp; Molnar (1981)</i> <i>Molnar (2001)</i> <i>Molnar (2011)</i>	
			<i>Wintonotitan wattsi</i>	<i>Coombs &amp; Molnar (1981)</i> <i>Molnar (2001)</i> <i>Molnar &amp; Salisbury (2005)</i> <i>Hocknull et al. (2009)</i> <i>Poropat et al. (2015a)</i>	
Ankylosauria indet. Ornithischia; Ornithopoda			'hypsilophodontid' [=Ornithopoda indet.]	<i>Leahey &amp; Salisbury (2013)</i> <i>Hocknull &amp; Cook (2008)</i>	
Trace fossil	Insecta	Arachnid	Oribatid mite	<i>Fletcher &amp; Salisbury (2014)</i>	
			Dinosauria	Ornithischia; large-bodied ornithopod trace	cf. <i>Iguanodontipus</i>
	Ornithischia; small-medium-bodied ornithopod trace	<i>Wintonopus latomorum</i>			<i>Thulborn &amp; Wade (1984)</i>
				<i>Romilio, Tucker &amp; Salisbury (2013)</i>	



**Figure 5** Representative animal fossils from the Upper Cretaceous portion of the Winton Formation. (A) *Melanoides* sp., QM F49451 (Fig. 1; Cook, 2005); (B) *Alathyria jaqueti* Newton, QM F103903 (Fig. 2M; Hocknull, 2000); (C) *Diamantinasaurus matildae* Hocknull et al., right humerus in lateral view, AODF 603 (Fig. 5D; Hocknull et al., 2009); (D) *Metaceratodus ellioti*, Kemp, QM F14971 (Photo: Rodney Berrell); (E) Probable oribatid mite trace, QM F44338 (continued on next page...)

Full-size  DOI: 10.7717/peerj.5513/fig-5

**Figure 5 (...continued)**

(Fig.2 ; *Fletcher & Salisbury, 2014*)<sup>1</sup>; (F) *Australovenator wintonensis* Hocknull et al. dentary teeth in labial view, AODF 604 (Fig. 20E, F; *Hocknull et al., 2009*); (G) *Wintonotitan watsi* Hocknull et al., reconstructed right humerus in posterior view, QM F7292 (Fig. 16F; *Hocknull et al., 2009*); (H) cf. *Igunodontipus*, track 3 (L2), left pedal impression (contested; Fig. 5D; *Romilio & Salisbury, 2014*)<sup>2</sup>. <sup>1</sup>Probable oribatid mite (Acari: Oribatida) tunnels and faecal pellets in silicified conifer wood from the Upper Cretaceous (Cenomanian–Turonian) portion of the Winton Formation, central-western Queensland, Australia, T.L. Fletcher and S.W. Salisbury, Alcheringa, copyright ©Association of Australasian Palaeontologists, reprinted by permission of Taylor & Francis Ltd, [www.tandfonline.com](http://www.tandfonline.com) on behalf of Association of Australasian Palaeontologists. <sup>2</sup>Reprinted from Cretaceous Research, 51, A. Romilio and S.W. Salisbury, Large dinosaurian tracks from the Upper Cretaceous (Cenomanian–Turonian) portion of the Winton Formation, Lark Quarry, central-western Queensland, Australia: 3D photogrammetric analysis renders the ‘stampede trigger’ scenario unlikely, 186–207, Copyright (2014), with permission from Elsevier.

(Table 5). The presence of titanosaurs in the Upper Cretaceous portion of the Winton Formation is considered indicative of inland, fluvio-lacustrine environments, as opposed to coastal plains (*Mannion & Upchurch, 2010*). However, the presence of the non-titanosauriform somphospondyl *Wintonotitan watsi* is contra this pattern. In their study of sauropod environmental preferences *Mannion & Upchurch (2010)* found eight localities that also had a mixed sauropod fauna. Although there is strong evidence of environmental preference, sauropod habitats were not strictly exclusive. Ornithopods have been shown to exploit a range of humid region habitats including wetlands (*Nadon, 1993*), lacustrine (*Platt & Meyer, 1991*), fluvial and riparian settings (*Vila et al., 2013; Herne et al., 2018*), and coastal environments (*Diedrich, 2011*) including lagoons (*Vila et al., 2013*). Both large and small ornithopods have been found in polar environments, with some potentially overwintering there, through to temperate climates (*Rich & Rich, 1989; Chinsamy, Rich & Vickers-Rich, 1998; Chinsamy et al., 2012; Herne et al., 2018; Woodward, Rich & Vickers-Rich, 2018*). Ornithopods appear to dominate high latitude to temperate localities, while saurichians, particularly sauropods, seem to dominate low latitude ‘tropical’ climate zones (*Matsukawa, Lockley & Jianjun, 2006*), although both extend beyond these ranges, as demonstrated by Antarctic (*Cerda & Chinsamy, 2012*) and Patagonian (*Apesteguía, 2004; Salgado, Apesteguía & Heredia, 2005; Filippi & Garrido, 2012* and others) sauropods. Evidence from other localities suggests habitat partitioning between sauropods and ornithopods at the same latitude (*Vila et al., 2013*), but the co-occurrence of both is also known from the ichnological data (*Salisbury et al., 2017*). As such, ornithopods are not a strong indicator of palaeoenvironmental conditions.

There does not seem to be a clear pattern of distribution of megaraptoran theropods, but that they are almost always found in association with other dinosaurs (*Smith et al., 2008; Novas et al., 2013*), from polar localities (*Molnar, Flannery & Rich, 1981; Benson et al., 2012*) to lower latitudes (*Bell et al., 2016*). This suggests that as long as the environment can support the necessary sized prey animals, they will find it suitable and are unlikely a specific indicator of palaeoenvironment.

## GAPS AND FUTURE DIRECTIONS

QM L311 comprises the most well-preserved flora of the Upper Cretaceous portion of the Winton Formation, and although investigation of this flora has been pursued (e.g., *Peters & Christophel, 1978; Dettmann, Clifford & Peters, 2009; Dettmann, Clifford & Peters, 2012*), undescribed material remains. Further investigation of its diversity and taphonomy may increase our understanding of the diversity of the Winton Formation and its place in the early evolution of the angiosperms. In addition, although much interest in the Winton Formation has centered around its faunal communities, prospecting for additional sites with similar lithology to QM L311 should continue in order to uncover similarly preserved, rich floral deposits.

The insect record is also very poor for the Winton Formation, likely due to the rapid destruction of specimens by weathering once exposed (*Jell, 2004*). The same kinds of exposures that could improve our floral record—fine matrix, newly exposed, silicified material—are also key sites to explore for insect body and trace fossils. Although some unreported specimens have been found, increased awareness among researchers and landholders that work in the region regarding the rarity and importance of these fossils may also improve the chances of increasing our understanding of this group given the current record comprises serendipitous finds uncovered during dam building (*Jell, 2004*).

Upper portions of the Winton Formation are the most likely to have been exposed to the extensive Cenozoic weathering that hampers understanding of the palaeoecology of this unit and surface exposures of the Winton Formation are very limited. Much of the detailed stratigraphic work to date, identifying Upper and Lower Cretaceous portions of the unit, has been conducted on data core logs or surface concretions. Many of the fossil-bearing localities, particularly those around Winton, do not have site-specific sedimentological and stratigraphic data associated with them, so broad scale stratigraphic correlations that include these sites are tentative and limited to a few key sites (namely Lark Quarry Conservation Park and Bladensburg National Park). This problem is exacerbated by extensive vertical faulting throughout the area. Continued investigation of the stratigraphy, sedimentology, and geomorphology of the region, along with the application of absolute dating methods to fossil-bearing localities within the Winton exposures, are key steps to guide future prospecting and to inform interpretation of the palaeoecology and palaeoenvironment of this important Australian Cretaceous formation.

## CONCLUSION: PALAEOENVIRONMENTAL RECONSTRUCTION

When all of the current evidence—sedimentological, taphonomic, floristic, vertebrate, and invertebrate—is combined, a coherent yet complex image of the climate and environment of the Upper Cretaceous portion of the Winton Formation is apparent. The temperatures were warm, mesothermal, and probably similar to those of the sub-tropics today despite the palaeolatitude of  $\sim 50^\circ$  S. This was in keeping with globally high temperatures that supported forest in the southern polar regions during the Cretaceous (*Cantrill & Falcon-Lang, 2001; Falcon-Lang, Cantrill & Nichols, 2001; Korasidis et al., 2016; Tosolini et al.,*

2018) at atmospheric CO<sub>2</sub> as high as 1000 ppm (Franks *et al.*, 2014). Precipitation was high and seasonal but not with extremes of wet and dry as is associated with the monsoon. The changing communities and ecology of the region over the 10 Ma deposition of the total Winton Formation was affected by the massive sediment loads derived from Whitsundays volcanism that infilled the inland sea (Tucker *et al.*, 2016). This resulted in at least two distinct systems—an estuarine, near-coastal system of higher energy, and a freshwater, inland, lower energy meandering river and flood plain—that must be considered separately.

The landscape that is preserved at the many sites where the Upper Cretaceous portion of the Winton Formation is exposed may be broadly continuous both temporally and stratigraphically, but in terms of their floral communities, they are heterogeneous. In some parts of the palaeolandscape, low diversity appears to be linked to a disturbance regime that may have comprised primarily flooding events. These flooding events were likely infrequent and possibly scouring in places when they occurred, leading to the establishment of long-lived podocarp stands that excluded other plants early in their establishment on the barren sediment. Other parts of the landscape were either less affected by flood events, or were affected at different times, such that their floral community was comprised of a different combination and abundance. These communities appear to have been more diverse, although not as diverse as would be expected of a forest climax community, and not as high or as diverse as at the other Late Cretaceous mid-latitude fossil floras to which it has been compared.

Comparing the range of communities recorded within the Upper Cretaceous portion of the Winton Formation to the other well-studied Australian Cretaceous plant localities, the older Albian Otway Basin flora, the Winton communities and their sediments are not as distinct as the six biofacies recorded in the Otway Basin (Tosolini *et al.*, 2018). Whereas Tosolini *et al.* (2018) record broad leaved araucarians as part of a hinterland, high energy riverine and fire dominated systems, and flood plains, the outcroppings of the Upper Cretaceous portion of the Winton Formation represent a broadly continuous meandering river and flood plain system that dominated the landscape. The semi-aquatic reptiles, fish and invertebrates that were present are consistent with this system and accompanying minor lacustrine components. This created a landscape with high densities of vegetation necessary to support large, herd-living herbivorous dinosaurs in wet, riparian environments. In contrast to the small ornithopod and theropod polar dinosaurs that characterise the Otway fauna (Rich & Rich, 1989; Rich, Vickers-Rich & Gangloff, 2002), the Winton Formation was abundant in large sauropods, ornithopods and theropods perhaps reflecting differences in primary productivity not mirrored by diversity.

The disturbance events suggested to have shaped this palaeoenvironment may be linked to the influence of a 'Pacific Decadal Oscillation'-like cycle affecting Queensland during the Late Cretaceous. This may have influenced both precipitation and temperature covariantly, as in modern climate systems. It is likely that precipitation varied between years, possibly on an oscillation of relative drought years and years of higher precipitation similar to the Pacific Decadal Oscillation. Thus, during the earliest part of the Late Cretaceous, when the rocks that now form the Upper Cretaceous portion of the Winton Formation were deposited, this part of eastern Gondwana was a dynamic and heterogeneous environment.



### **Institutional Abbreviations**

**QML** Queensland Museum Field locality  
**AODL** Australian Age of Dinosaurs field locality

## **ACKNOWLEDGEMENTS**

The main body of work for this article was conducted during the first author's doctoral studies at The University of Queensland. The authors would like to thank the editor, Barry Brook, Tom Rich, Scott Hocknull, and an anonymous reviewer, whose guidance greatly improved this manuscript.

## **ADDITIONAL INFORMATION AND DECLARATIONS**

### **Funding**

Tamara Fletcher was supported by an Australian Postgraduate Award with additional funds from the School of Biological Sciences Graduate Travel Scheme; the Graduate School International Travel Award; the School of Geography Field Support and Longreach Regional Council. This research was also funded in part by the Australian Research Council (LP0347332 and LP0776851) and The University of Queensland (to Steven W. Salisbury). There was no additional external funding received for this study. The funders had no role in study design, data collection and analysis, decision to publish, or preparation of the manuscript.

### **Grant Disclosures**

The following grant information was disclosed by the authors:  
School of Biological Sciences Graduate Travel Scheme.  
Graduate School International Travel Award.  
School of Geography Field Support and Longreach Regional Council.  
Australian Research Council: LP0347332, LP0776851.  
The University of Queensland.

### **Competing Interests**

The authors declare there are no competing interests.

### **Author Contributions**

- Tamara L. Fletcher analyzed the data, prepared figures and/or tables, authored or reviewed drafts of the paper, approved the final draft.
- Patrick T. Moss and Steven W. Salisbury authored or reviewed drafts of the paper, approved the final draft.

### **Data Availability**

The following information was supplied regarding data availability:  
This review article did not generate any data or code.

## REFERENCES

- Agnolin FL, Ezcurra MD, Pais DF, Salisbury SW. 2010.** A reappraisal of the Cretaceous non-avian dinosaur faunas from Australia and New Zealand: evidence for their Gondwanan affinities. *Journal of Systematic Palaeontology* **8**:257–300 DOI [10.1080/14772011003594870](https://doi.org/10.1080/14772011003594870).
- Allan JD. 1995.** *Stream ecology: structure and function of running waters*. London: Chapman & Hall.
- Amiot R, Kusuhashi N, Xu X, Wang Y. 2010.** Isolated dinosaur teeth from the Lower Cretaceous Shaihe and Fuxin formations of northeastern China. *Journal of Asian Earth Sciences* **39**:347–358 DOI [10.1016/j.jseaes.2010.04.017](https://doi.org/10.1016/j.jseaes.2010.04.017).
- Apesteguía S. 2004.** *Bonitasaura salgadoi* gen. et sp. nov.: a beaked sauropod from the Late Cretaceous of Patagonia. *Naturwissenschaften* **91**:493–497 DOI [10.1007/s00114-004-0560-6](https://doi.org/10.1007/s00114-004-0560-6).
- Baylis GTS. 1969.** Mycorrhizal nodules and growth of *Podocarpus* in nitrogen-poor soil. *Nature* **223**:1385–1386 DOI [10.1038/2231385a0](https://doi.org/10.1038/2231385a0).
- Baylis GTS, McNabb RFR, Morrison TM. 1963.** The mycorrhizal nodules of podocarps. *Transactions of the British Mycological Society* **46**:378–384 DOI [10.1016/S0007-1536\(63\)80031-5](https://doi.org/10.1016/S0007-1536(63)80031-5).
- Bell PR, Cau A, Fanti F, Smith ET. 2016.** A large-clawed theropod (Dinosauria: Tetanurae) from the Lower Cretaceous of Australia and the Gondwanan origin of megaraptorid theropods. *Gondwana Research* **36**:473–487 DOI [10.1016/j.gr.2015.08.004](https://doi.org/10.1016/j.gr.2015.08.004).
- Benson RB, Barrett PM, Rich TH, Vickers-Rich P. 2010.** A southern tyrant reptile. *Science* **327**:1613–1613 DOI [10.1126/science.1187456](https://doi.org/10.1126/science.1187456).
- Benson RB, Rich TH, Vickers-Rich P, Hall M. 2012.** Theropod fauna from southern Australia indicates high polar diversity and climate-driven dinosaur provinciality. *PLOS ONE* **7**:e37122 DOI [10.1371/journal.pone.0037122](https://doi.org/10.1371/journal.pone.0037122).
- Berrell RW, Alvarado-Ortega J, Yabumoto Y, Salisbury SW. 2014.** The first record of the ichthyodectiform fish *Cladocyclus* from eastern Gondwana: a new species from the Lower Cretaceous of Queensland, Australia. *Acta Palaeontologica Polonica* **59**:903–920.
- Birks HJB, Felde VA, Bjune AE, Grytnes J-A, Seppä H, Giesecke T. 2016.** Does pollen-assembly richness reflect floristic richness? A review of recent developments and future challenges. *Review of Palaeobotany and Palynology* **228**:1–25 DOI [10.1016/j.revpalbo.2015.12.011](https://doi.org/10.1016/j.revpalbo.2015.12.011).
- Bose NM. 1955.** Some tertiary plant remains from Queensland, Australia. *Botaniska Notiser* **108**:381–390.
- Brown JH. 1988.** Species diversity. In: Myers AA, Giller PS, eds. *Analytical biogeography: an integrated approach to the study of animal and plant distributions*. London: Chapman and Hall, 57–89.
- Bryan SE, Constantine AE, Stephens CJ, Ewart A, Schön RW, Parianos J. 1997.** Early Cretaceous volcano-sedimentary successions along the eastern Australian continental

- margin: implications for the break-up of eastern Gondwana. *Earth and Planetary Science Letters* **153**:85–102 DOI [10.1016/S0012-821X\(97\)00124-6](https://doi.org/10.1016/S0012-821X(97)00124-6).
- Bryan SE, Cook A, Allen CM, Siegel C, Purdy D, Greentree J, Uysal T. 2012.** Early-mid Cretaceous tectonic evolution of eastern Gondwana: from silicic LIP magmatism to continental rupture. *Episodes* **35**:142–152.
- Bryan SE, Ewart A, Stephens CJ, Parianos J, Downes PJ. 2000.** The Whitsunday Volcanic Province, central Queensland, Australia: lithological and stratigraphic investigations of a silicic-dominated large igneous province. *Journal of Volcanology and Geothermal Research* **99**:55–78 DOI [10.1016/S0377-0273\(00\)00157-8](https://doi.org/10.1016/S0377-0273(00)00157-8).
- Burger D. 1970.** Early Cretaceous angiosperm pollen grains from Queensland. *Australian Bureau of Mineral Resources, Geology and Geophysics Bulletin* **189**:1–15.
- Burger D. 1986.** Palynology, cyclic sedimentation, and palaeoenvironments in the Late Mesozoic of the Eromanga Basin. *Geological Society Special Publication* **12**:53–70.
- Burger D. 1990.** Early Cretaceous angiosperms from Queensland, Australia. *Review of Palaeobotany and Palynology* **65**:153–163 DOI [10.1016/0034-6667\(90\)90066-R](https://doi.org/10.1016/0034-6667(90)90066-R).
- Burger D. 1993.** Early and middle Cretaceous angiosperm pollen grains from Australia. *Review of Palaeobotany and Palynology* **78**:183–234 DOI [10.1016/0034-6667\(93\)90065-3](https://doi.org/10.1016/0034-6667(93)90065-3).
- Burnham RJ. 1989.** Relationships between standing vegetation and leaf litter in a paratropical forest: implications for paleobotany. *Review of Palaeobotany and Palynology* **58**:5–32 DOI [10.1016/0034-6667\(89\)90054-7](https://doi.org/10.1016/0034-6667(89)90054-7).
- Cantrill DJ, Falcon-Lang HJ. 2001.** Cretaceous (Late Albian) coniferales of Alexander Island, Antarctica. 2. Leaves, reproductive structures and roots. *Review of Palaeobotany and Palynology* **115**:119–145 DOI [10.1016/S0034-6667\(01\)00053-7](https://doi.org/10.1016/S0034-6667(01)00053-7).
- Cantrill DJ, Nichols GJ. 1996.** Taxonomy and palaeoecology of Early Cretaceous (Late Albian) angiosperm leaves from Alexander Island, Antarctica. *Review of Palaeobotany and Palynology* **92**:1–28 DOI [10.1016/0034-6667\(95\)00105-0](https://doi.org/10.1016/0034-6667(95)00105-0).
- Cartwright J, Lonergan L. 1997.** Seismic expression of layer-bound fault systems of the Eromanga and North Sea Basins. *Exploration Geophysics* **28**:323–331.
- Casey DJ. 1967a.** Subsurface geology of the Longreach 1:250,000 sheet area. Geological Survey of Queensland Records.
- Casey DJ. 1967b.** Subsurface geology of the Maneroo and Winton 1:250,000 sheet area. Geological Survey of Queensland Records.
- Casey DJ. 1970.** Northern Eromanga Basin. Geological Survey of Queensland, Report number 41.
- Cerda IA, Chinsamy A. 2012.** Biological implications of the bone microstructure of the Late Cretaceous Ornithomimid Dinosaur *Gasparinisaura cincosaltensis*. *Journal of Vertebrate Paleontology* **32**:355–368 DOI [10.1080/02724634.2012.646804](https://doi.org/10.1080/02724634.2012.646804).
- Chambers TC, Drinnan AN, McLoughlin S. 1998.** Some morphological features of Wollemi Pine (*Wollemia nobilis*: Araucariaceae) and their comparison to Cretaceous plant fossils. *International Journal of Plant Science* **159**:160–171 DOI [10.1086/297534](https://doi.org/10.1086/297534).

- Chapman LJ, Chapman CA, Ogutu-Ohwayo R, Chandler M, Kaufman L, Keiter AE.** 1996. Refugia for endangered fishes from an introduced predator in Lake Nabugabo, Uganda. *Conservation Biology* **10**:554–561 DOI [10.2307/2386870](https://doi.org/10.2307/2386870).
- Chinsamy A, Rich T, Vickers-Rich P.** 1998. Polar dinosaur bone histology. *Journal of Vertebrate Paleontology* **18**:385–390 DOI [10.1080/02724634.1998.10011066](https://doi.org/10.1080/02724634.1998.10011066).
- Chinsamy A, Thomas DB, Tumarkin-Deratzian AR, Fiorillo AR.** 2012. Hadrosaurs were perennial polar residents. *Anatomical Record* **295**:610–614 DOI [10.1002/ar.22428](https://doi.org/10.1002/ar.22428).
- Christophel D, Greenwood D.** 1988. A comparison of Australian tropical rainforest and Tertiary fossil leaf-beds. *Proceedings of the Ecological Society of Australia* **15**:139–148.
- Christopher RA.** 1979. Normapolles and triporate pollen assemblages from the Raritan and Magothy formations (Upper Cretaceous) of New Jersey. *Palynology* **3**:73–121 DOI [10.1080/01916122.1979.9989185](https://doi.org/10.1080/01916122.1979.9989185).
- Clifford HT, Dettmann ME.** 2005. First record from Australia of the Cretaceous fern genus *Tempskya* and the description of a new species, *T. judithae*. *Review of Palaeobotany and Palynology* **134**:71–84 DOI [10.1016/j.revpalbo.2004.12.001](https://doi.org/10.1016/j.revpalbo.2004.12.001).
- Contreras-Medina RL, Vega IL.** 2002. On the distribution of gymnosperm genera, their areas of endemism and cladistic biogeography. *Australian Systematic Botany* **15**:193–203 DOI [10.1071/SB00004](https://doi.org/10.1071/SB00004).
- Cook AG.** 2005. First record of fossil freshwater gastropods within the Winton Formation. *Memoirs of the Queensland Museum* **51**:406.
- Cookson IC, Dettmann ME.** 1959. On *Schizosporis*, a new form genus from Australian Cretaceous deposits. *Micropaleontology* **5**:213–216 DOI [10.2307/1484210](https://doi.org/10.2307/1484210).
- Coombs JWP, Deméré TA.** 1996. A Late Cretaceous nodosaurid ankylosaur (Dinosauria: Ornithischia) from marine sediments of coastal California. *Journal of Paleontology* **70**:311–326 DOI [10.1017/S0022336000023404](https://doi.org/10.1017/S0022336000023404).
- Coombs WPJ, Molnar RE.** 1981. Sauropoda (Reptilia, Saurischia) from the Cretaceous of Queensland Australia. *Memoirs of the Queensland Museum* **20**:351–373.
- Coomes DA, Bellingham PJ.** 2011. Temperate and tropical podocarps: how ecologically alike are they? In: Turner BL, Cernusak LA, eds. *Ecology of the Podocarpaceae in tropical forests*. Washington, D.C.: Smithsonian Institution Scholarly Press, 119–140.
- Coote S.** 1987. GSQ Blackall 2. Preliminary lithologic log & composite log. Geological Survey of Queensland, Record 1987/12.
- Dettmann ME, Clifford HT.** 1992. Phylogeny and biogeography of *Ruffordia*, *Mohria* and *Anemia* (Schizaeaceae) and *Ceratopteris* (Pteridaceae): evidence from *in situ* and dispersed spores. *Alcheringa* **16**:269–314 DOI [10.1080/03115519208619111](https://doi.org/10.1080/03115519208619111).
- Dettmann ME, Clifford HT.** 2000. Gemmae of the Marchantiales from the Winton Formation (mid-Cretaceous), Eromanga Basin, Queensland. *Memoirs of the Queensland Museum* **45**:285–292.
- Dettmann ME, Clifford HT, Peters M.** 2009. *Lovellea wintonensis* gen. et sp. nov.—Early Cretaceous (late Albian), anatomically preserved, angiospermous flowers and fruits from the Winton Formation, western Queensland, Australia. *Cretaceous Research* **30**:339–355 DOI [10.1016/j.cretres.2008.07.015](https://doi.org/10.1016/j.cretres.2008.07.015).

- Dettmann ME, Clifford HT, Peters M. 2012.** *Emwadea microcarpa* gen. et sp. nov.—anatomically preserved araucarian seed cones from the Winton Formation (late Albian), western Queensland, Australia. *Alcheringa* **36**:217–237 DOI [10.1080/03115518.2012.622155](https://doi.org/10.1080/03115518.2012.622155).
- Dettmann ME, Molnar RE, Douglas JG, Burger D, Fielding C, Clifford HT, Francis J, Jell P, Rich T, Wade M, Rich PV, Pledge N, Kemp A, Rozefelds A. 1992.** Australian Cretaceous terrestrial faunas and floras: biostratigraphic and biogeographic implications. *Cretaceous Research* **13**:207–262 DOI [10.1016/0195-6671\(92\)90001-7](https://doi.org/10.1016/0195-6671(92)90001-7).
- Dettmann M, Playford G. 1969.** Palynology of the Australian Cretaceous. In: Campbell KSW, ed. *Stratigraphy and palaeontology essays in honour of Dorothy Hill*. Canberra: Australian National University Press, 174–210.
- Diedrich C. 2011.** Upper Jurassic tidal flat megatracksites of Germany—Coastal dinosaur migration highways between European islands, and a review of the dinosaur footprints. *Palaeobiodiversity and Palaeoenvironments* **91**:129–155 DOI [10.1007/s12549-010-0044-y](https://doi.org/10.1007/s12549-010-0044-y).
- Draper JJE. 2002.** *Geology of the cooper and Eromanga basins*. Queensland: Queensland Department of Natural Resources and Mines.
- Duncan RP. 1991.** Competition and the coexistence of species in a mixed podocarp stand. *Journal of Ecology* **79**:1073–1084 DOI [10.2307/2261099](https://doi.org/10.2307/2261099).
- Duncan RP. 1993.** Flood disturbance and the coexistence of species in a lowland podocarp forest, south Westland, New Zealand. *Journal of Ecology* **81**:403–416 DOI [10.2307/2261519](https://doi.org/10.2307/2261519).
- Dunstan B. 1916.** Appendix B; Queensland geological formations. In: Harrap G, ed. *A school geography of Queensland*. Brisbane: Department of Public Instruction, 164–176.
- Espinoza T, Marshall SM, McDougall AJ. 2013.** Spawning of the endangered Australian lungfish (*Neoceratodus fosteri*) in a heavily regulated river: a pulse for life. *River Research and Applications* **29**:1215–1225 DOI [10.1002/rra.2607](https://doi.org/10.1002/rra.2607).
- Exon NF, Senior BR. 1976.** The Cretaceous geology of the Eromanga and Surat Basins. *BMR Journal* **1**:33–50 DOI [10.1136/bmj.1.6000.33](https://doi.org/10.1136/bmj.1.6000.33).
- Falcon-Lang HJ, Cantrill DJ, Nichols GJ. 2001.** Biodiversity and terrestrial ecology of a mid-Cretaceous, high-latitude floodplain, Alexander Island, Antarctica. *Journal of the Geological Society* **158**:709–724 DOI [10.1144/jgs.158.4.709](https://doi.org/10.1144/jgs.158.4.709).
- Feild TS, Arens NC. 2005.** Form, function and environments of the early angiosperms: merging extant phylogeny and ecophysiology with fossils. *New Phytologist* **166**:383–408 DOI [10.1111/j.1469-8137.2005.01333.x](https://doi.org/10.1111/j.1469-8137.2005.01333.x).
- Feild TS, Arens NC, Doyle JA, Dawson TE, Donoghue MJ. 2004.** Dark and disturbed: a new image of early angiosperm ecology. *Paleobiology* **30**:82–107 DOI [10.1666/0094-8373\(2004\)030<0082:dadani>2.0.co;2](https://doi.org/10.1666/0094-8373(2004)030<0082:dadani>2.0.co;2).
- Fielding CR. 1992.** A review of Cretaceous coal-bearing sequences in Australia. *Geological Society of America Special Paper* **267**:303–324 DOI [10.1130/SPE267-p303](https://doi.org/10.1130/SPE267-p303).
- Filippi LS, Garrido AC. 2012.** Nuevo Registro del Género Dinilysia (Squamata, Serpentes) Para la Formación Anacleto (Campaniano Inferior—Medio), Rincón de los

- Sauces, Neuquén, Argentina. *Ameghiniana* **49**:132–136  
[DOI 10.5710/AMGH.v49i1\(297\)](https://doi.org/10.5710/AMGH.v49i1(297)).
- Finlayson D, Leven J, Etheridge M. 1988.** Structural styles and basin evolution in Eromanga region, eastern Australia. *AAPG Bulletin* **72**:33–48.
- Fletcher TL, Cantrill DJ, Moss PT, Salisbury SW. 2014a.** A new species of *Protophyllocladoxylon* from the upper Cretaceous (Cenomanian–Turonian) portion of the Winton Formation, central-western Queensland, Australia. *Review of Palaeobotany and Palynology* **208**:43–49 [DOI 10.1016/j.revpalbo.2014.05.004](https://doi.org/10.1016/j.revpalbo.2014.05.004).
- Fletcher TL, Greenwood DR, Moss PT, Salisbury SW. 2014b.** Palaeoclimate of the Late Cretaceous (Cenomanian–Turonian) portion of the Winton Formation, central-western Queensland, Australia: new observations based on CLAMP and bioclimatic analysis. *PALAIOS* **29**:121–128 [DOI 10.2110/palo.2013.080](https://doi.org/10.2110/palo.2013.080).
- Fletcher TL, Moss PT, Salisbury SW. 2013.** Foliar physiognomic climate estimates for the Late Cretaceous (Cenomanian–Turonian) Lark Quarry fossil flora, central-western Queensland, Australia. *Australian Journal of Botany* **61**:575–582 [DOI 10.1071/BT13197](https://doi.org/10.1071/BT13197).
- Fletcher TL, Moss PT, Salisbury SW. 2015.** Wood growth indices as climate indicators from the Upper Cretaceous (Cenomanian–Turonian) portion of the Winton Formation, Australia. *Palaeogeography, Palaeoclimatology, Palaeoecology* **417**:35–43 [DOI 10.1016/j.palaeo.2014.10.012](https://doi.org/10.1016/j.palaeo.2014.10.012).
- Fletcher T, Salisbury S. 2014.** Probable oribatid mite (Acari: Oribatida) tunnels and frass in silicified conifer wood from the Late Cretaceous (Cenomanian–Turonian) portion of the Winton Formation, central-western Queensland, Australia. *Alcheringa* **38**:35–43.
- Frakes LA, Burger D, Apthorpe M, Wiseman J, Dettmann M, Alley N, Flint R, Gravestock D, Ludbrook N, Backhouse J, Skwarko S, Scheibnerova V, McMinn A, Moore PS, Bolton BR, Douglas JG, Christ R, Wade M, Molnar RE, McGowran B, Balme BE, Day RA. 1987.** Australian Cretaceous shorelines, stage by stage. *Palaeogeography, Palaeoclimatology, Palaeoecology* **59**:31–48 [DOI 10.1016/0031-0182\(87\)90072-1](https://doi.org/10.1016/0031-0182(87)90072-1).
- Franks PJ, Royer DL, Beerling DJ, Van de Water PK, Cantrill DJ, Barbour MM, Berry JA. 2014.** New constraints on atmospheric CO<sub>2</sub> concentration for the Phanerozoic. *Geophysical Research Letters* **41**:4685–4694 [DOI 10.1002/2014GL060457](https://doi.org/10.1002/2014GL060457).
- Frumin S, Eklund H, Friis EM. 2004.** *Mauldinia hirsuta* sp. nov., a new member of the extinct genus *Mauldinia* (Lauraceae) from the Late Cretaceous (Cenomanian–Turonian) of Kazakhstan. *International Journal of Plant Sciences* **165**:883–895 [DOI 10.1086/421479](https://doi.org/10.1086/421479).
- Frumin S, Friis EM. 1999.** Magnoliid reproductive organs from the Cenomanian–Turonian of north-western Kazakhstan: Magnoliaceae and Illiciaceae. *Plant Systematics and Evolution* **216**:265–288 [DOI 10.1007/BF01084403](https://doi.org/10.1007/BF01084403).
- Gorman OT, Karr JR. 1978.** Habitat structure and stream fish communities. *Ecology* **59**:507–515 [DOI 10.2307/1936581](https://doi.org/10.2307/1936581).

- Goudswaard K, Witte F, Chapman LJ. 2002.** Decline of the African lungfish (*Protopterus aethiopicus*) in Lake Victoria (East Africa). *African Journal of Ecology* **40**:42–52 DOI [10.1046/j.0141-6707.2001.00335.x](https://doi.org/10.1046/j.0141-6707.2001.00335.x).
- Gray ARG, McKillop M, McKellar JL. 2002.** Eromanga Basin stratigraphy. In: Draper JJ, ed. *Geology of the Cooper and Eromanga Basins. Queensland volume 1*. Brisbane: Department of Natural Resources and Mines, 30–56.
- Green PM, Hawkins PJ, Carmichael DC, Brian TJ, Smith RJ, Quarantotto P, Genn DLP, Hoffmann KL, McKellar JL, John BH, Shield CJ. 1991.** An assessment of hydrocarbon potential of the northern Eromanga Basin, Queensland. *Queensland Government Mining Journal* **92**:24–45.
- Greenwood DR. 1991.** The taphonomy of plant macrofossils. In: SK D, ed. *The processes of fossilization*. London: Belhaven Press, 141–169.
- Hawkins P, Harrison P. 1978.** Stratigraphic and seismic studies in the Lovelle depression, western Galilee Basin. *Queensland Government Mining Journal* **79**:623–650.
- Helby R, Morgan R, Partridge AD. 1987.** A palynological zonation of the Australian Mesozoic. *Association of Australasian Palaeontologists Memoir* **4**:1–94.
- Henderson R, Stephenson P. 1980.** *The geology and geophysics of northeastern Australia*. Queensland Division: Geological Association of Australia.
- Herman AB, Spicer RA. 2010.** Mid-Cretaceous floras and climate of the Russian High Arctic (Novosibirsk Islands, Northern Yakutiya). *Palaeogeography Palaeoclimatology Palaeoecology* **295**:409–422 DOI [10.1016/j.palaeo.2010.02.034](https://doi.org/10.1016/j.palaeo.2010.02.034).
- Herne MC, Tait AM, Weisbecker V, Hall M, Cleeland M, Salisbury SW. 2018.** A new, early Cretaceous, small-bodied ornithopod (Ornithischia, Cerapoda) from a deep, high-energy palaeoriver of the Australian-Antarctic rift system. *PeerJ* **5**:e4113 DOI [10.7717/peerj.4113](https://doi.org/10.7717/peerj.4113).
- Hocknull SA. 1997.** Cretaceous freshwater bivalves from Queensland. *Memoirs of the Queensland Museum* **42**:223–226.
- Hocknull SA. 2000.** Mesozoic freshwater and estuarine bivalves from Australia. *Memoirs of the Queensland Museum* **45**:405–426.
- Hocknull SA, Cook AG. 2008.** Hypsilophodontid (Dinosauria: Ornithischia) from latest Albian, Winton Formation, central Queensland. *Memoirs of the Queensland Museum* **52**:212.
- Hocknull SA, White MA, Tischler TR, Cook AG, Calleja ND, Sloan T, Elliott DA. 2009.** New mid-Cretaceous (Latest Albian) Dinosaurs from Winton, Queensland, Australia. *PLOS ONE* **4**(51):e6190 DOI [10.1371/journal.pone.0006190](https://doi.org/10.1371/journal.pone.0006190).
- Holloway JT. 1954.** Forests and climates in the South Island of New Zealand. *Transactions of the Royal Society of New Zealand* **82**:329–410.
- Hower TL. 2011.** Evolution of the Sentry Petroleum Ltd. Talundilly-1 Coal Seam Methane Project, NI 51-101 Evaluation. MHA Petroleum Consultants LCC, 1–28.
- Hutchinson DE. 1957.** *A treatise on limnology*. New York: Wiley.
- Iglesias ARI, ZaMuner AB, Poiré DG, Lariestra F. 2007.** Diversity, taphonomy and palaeoecology of an Angiosperm flora from the Cretaceous (Cenomanian–Coniacian)

- in southern Patagonia, Argentina. *Palaeontology* **50**:445–466  
[DOI 10.1111/j.1475-4983.2007.00639.x](https://doi.org/10.1111/j.1475-4983.2007.00639.x).
- Jaffré T. 1995.** Distribution and ecology of the conifers of New Caledonia. In: Enright NJ, Hill RS, eds. *Ecology of the Southern Conifers*. Carlton: Melbourne University Press, 171–196.
- Jell PA. 2004.** The fossil insects of Australia. *Memoirs of the Queensland Museum* **50**:1–124.
- Johansen K, Lenfant C. 1967.** Respiratory function in the South American lungfish, *Lepidosiren paradoxa* (Fitz). *Journal of Experimental Biology* **46**:205–218.
- Kemp A. 1997.** *Metaceratodus* (Osteichthyes: Dipnoi, Family Ceratodontidae) from Australian Mesozoic and Cenozoic Deposits. *Journal of Vertebrate Palaeontology* **17**:26–33 [DOI 10.1080/02724634.1997.10010949](https://doi.org/10.1080/02724634.1997.10010949).
- Knowlton FH. 1919.** A catalogue of the Mesozoic and Cenozoic plants of North America. *United States Geological Survey Bulletin* **696**:1–815.
- Korasidis VA, Wagstaff BE, Gallagher SJ, Duddy IR, Tosolini A-MP, Cantrill DJ, Norvick MS. 2016.** Early angiosperm diversification in the Albian of southeast Australia: implications for flowering plant radiation across eastern Gondwana. *Review of Palaeobotany and Palynology* **232**:61–80 [DOI 10.1016/j.revpalbo.2016.04.005](https://doi.org/10.1016/j.revpalbo.2016.04.005).
- Krebs CJ. 2001.** *Ecology: the experimental analysis of distribution and abundance*. San Francisco: Benjamin Cummings.
- Leahey LG, Salisbury SW. 2013.** First evidence of ankylosaurian dinosaurs (Ornithischia: Thyreophora) from the ‘mid’-Cretaceous (late Albian–Cenomanian) Winton Formation of Queensland, Australia. *Alcheringa* **37**:249–257  
[DOI 10.1080/03115518.2013.743703](https://doi.org/10.1080/03115518.2013.743703).
- Lenhart CF, Naber JR, Nieber JL. 2013.** Impacts of hydrologic change on sandbar nesting availability for riverine turtles in Eastern Minnesota, U.S.A. *Water* **1243**–1261.
- Li ZX, Powell CM. 2001.** An outline of the palaeogeographic evolution of the Australasian region since the beginning of the Neoproterozoic. *Earth-Science Reviews* **53**:237–277 [DOI 10.1016/S0012-8252\(00\)00021-0](https://doi.org/10.1016/S0012-8252(00)00021-0).
- Lloyd J, Collins AS, Payne JL, Glorie S, Holford S, Reid AJ. 2016.** Tracking the Cretaceous transcontinental Ceduna River through Australia: the hafnium isotope record of detrital zircons from offshore southern Australia. *Geoscience Frontiers* **7**:237–244  
[DOI 10.1016/j.gsf.2015.06.001](https://doi.org/10.1016/j.gsf.2015.06.001).
- Locatelli ER. 2017.** The exceptional preservation of plant fossils: a review of taphonomic pathways and biases in the fossil record. *The Paleontological Society Papers* **20**:237–258 [DOI 10.1017/S1089332600002874](https://doi.org/10.1017/S1089332600002874).
- MacDonald JD, Holford SP, Green PF, Duddy IR, King RC, Backé G. 2013.** Detrital zircon data reveal the origin of Australia’s largest delta system. *Journal of the Geological Society* **170**:3–6 [DOI 10.1144/jgs2012-093](https://doi.org/10.1144/jgs2012-093).
- Mannion PD, Upchurch P. 2010.** A quantitative analysis of environmental associations in sauropod dinosaurs. *Paleobiology* **36**:253–282 [DOI 10.1666/08085.1](https://doi.org/10.1666/08085.1).
- Mantua NJ, Hare SR. 2002.** The pacific decadal oscillation. *Journal of Oceanography* **58**:35–44 [DOI 10.1023/A:1015820616384](https://doi.org/10.1023/A:1015820616384).



- Markwick PJ. 1994.** “Equability”, continentality, and Tertiary “climate”: the crocodylian perspective. *Geology* **22**:613–616  
[DOI 10.1130/0091-7613\(1994\)022<0613:ecatct>2.3.co;2](https://doi.org/10.1130/0091-7613(1994)022<0613:ecatct>2.3.co;2).
- Markwick PJ. 1998.** Fossil crocodylians as indicators of Late Cretaceous and Cenozoic climates: implications for using palaeontological data in reconstructing palaeoclimate. *Palaeogeography, Palaeoclimatology, Palaeoecology* **137**:205–271  
[DOI 10.1016/S0031-0182\(97\)00108-9](https://doi.org/10.1016/S0031-0182(97)00108-9).
- Martin HA. 1998.** Late Cretaceous—Cainozoic palynology of the Poonarunna (1) well, central Australia. *Transactions of the Royal Society of South Australia* **122**:89–138.
- Martínez-Millán M, Crepet WL, Nixon KC. 2009.** *Pentapetalum trifasciculandricus* gen. et sp. nov., a thealean fossil flower from the Raritan Formation, New Jersey, USA (Turonian, Late Cretaceous). *American Journal of Botany* **96**:933–949  
[DOI 10.3732/ajb.0800347](https://doi.org/10.3732/ajb.0800347).
- Mathur S. 1983.** Deep crustal reflection results from the central Eromanga Basin, Australia. *Tectonophysics* **100**:163–173 [DOI 10.1016/0040-1951\(83\)90184-1](https://doi.org/10.1016/0040-1951(83)90184-1).
- Matsukawa M, Lockley M, Jianjun L. 2006.** Cretaceous terrestrial biotas of East Asia, with special reference to dinosaur-dominated ichnofaunas: towards a synthesis. *Cretaceous Research* **27**:3–21 [DOI 10.1016/j.cretres.2005.10.009](https://doi.org/10.1016/j.cretres.2005.10.009).
- Matthaei CD, Peacock KA, Townsend CR. 1999.** Scour and fill patterns in a New Zealand stream and potential implications for invertebrate refugia. *Freshwater Biology* **42**:41–57 [DOI 10.1046/j.1365-2427.1999.00456.x](https://doi.org/10.1046/j.1365-2427.1999.00456.x).
- Mavromatidis A, Hillis R. 2005.** Quantification of exhumation in the Eromanga Basin and its implications for hydrocarbon exploration. *Petroleum Geoscience* **11**:79–92  
[DOI 10.1144/1354-079304-621](https://doi.org/10.1144/1354-079304-621).
- McGowan HA, Marx SK, Denholm J, Soderholm J, Kamber BK. 2009.** Reconstructing annual inflows to the headwater catchments of the Murray River, Australia, using the Pacific decadal oscillation. *Geophysical Research Letters* **36**:Article L06707  
[DOI 10.1029/2008GL037049](https://doi.org/10.1029/2008GL037049).
- McLoughlin S, Drinnan AN, Rozefelds AC. 1995.** A Cenomanian flora from the Winton Formation, Eromanga Basin, Queensland, Australia. *Memoirs of the Queensland Museum* **38**:273–313.
- McLoughlin S, Pott C, Elliott D. 2010.** The Winton Formation flora (Albian, Cenomanian, Eromanga Basin): implications for vascular plant diversification and decline in the Australian Cretaceous. *Alcheringa* **34**:303–323 [DOI 10.1080/03115511003669944](https://doi.org/10.1080/03115511003669944).
- Messel H, Vorlicek GC, Wells AG, Green WJ, Curtis HS, Roff CRR, Weaver CM, AJ. 1981.** South western Cape York peninsula, Nassau, Staaten an Gilbert river systems and duck creek system; northern Cape York peninsula, Port Musgrave: Wenlock and Ducie river systems, Palm, Dulcie and Namaleta creeks, Escape river. In: *Surveys of tidal waterways on Cape York peninsula Queensland, Australia and their crocodile populations. Monograph 16*. Sydney: Pergamon Press, 115.
- Molnar RE. 1991.** Fossil reptiles in Australia. In: Vickers-Rich P, Monaghan JM, Baird RF, Rich TH, eds. *Vertebrate palaeontology of Australasia*. Melbourne: Pioneer Design Studio, 606–702.

- Molnar RE. 2001.** A reassessment of the phylogenetic position of Cretaceous sauropod dinosaurs from Queensland, Australia. In: *VII international symposium on mesozoic terrestrial ecosystems*. Buenos Aires: Publicación Electrónica de la Asociación Paleontológica Argentina, 139–144.
- Molnar RE. 2010.** Taphonomic observations on eastern Australian Cretaceous sauropods. *Alcheringa* **34**:421–429 DOI [10.1080/03115518.2010.497258](https://doi.org/10.1080/03115518.2010.497258).
- Molnar RE. 2011.** New morphological information about Cretaceous sauropod dinosaurs from the Eromanga Basin, Queensland, Australia. *Alcheringa* **35**:329–339 DOI [10.1080/03115518.2011.533978](https://doi.org/10.1080/03115518.2011.533978).
- Molnar R, Flannery TF, Rich TH. 1981.** An allosaurid theropod dinosaur from the Early Cretaceous of Victoria, Australia. *Alcheringa* **5**:141–146 DOI [10.1080/03115518108565427](https://doi.org/10.1080/03115518108565427).
- Molnar RE, Salisbury SW. 2005.** Sauropods from Australia. In: Tidwell V, Carpenter K, eds. *Thunder-lizards: the sauropodomorph dinosaurs*. Bloomington: Indiana University Press, 454–465.
- Molnar RE, Wiffen J. 1994.** A Late Cretaceous polar dinosaur fauna from New Zealand. *Cretaceous Research* **15**:689–706 DOI [10.1006/cres.1994.1038](https://doi.org/10.1006/cres.1994.1038).
- Monk CD. 1966.** An ecological significance of evergreenness. *Ecology* **47**:504–505 DOI [10.2307/1932995](https://doi.org/10.2307/1932995).
- Moore PS, Pitt GM. 1984.** Cretaceous of the Eromanga Basin; implications for Hydrocarbon exploration. *Australian Petroleum Exploration Association Journal* **24**:358–376.
- Moss F, Wake-Dyster K. 1983.** The Australian central Eromanga Basin project: an introduction. *Tectonophysics* **100**:131–145 DOI [10.1016/0040-1951\(83\)90182-8](https://doi.org/10.1016/0040-1951(83)90182-8).
- Moya C, Raiber M, Taulis X, Cox M. 2015.** Hydrochemical evolution and groundwater flow processes in the Galilee and Eromanga basins, Great Artesian Basin, Australia: a multivariate statistical approach. *Science of The Total Environment* **508**:411–426.
- Murray C, Scheibner E, Walker R. 1989.** Regional geological interpretation of a digital coloured residual Bouguer gravity image of eastern Australia with a wavelength cut-off of 250 km. *Australian Journal of Earth Sciences* **36**:423–449.
- Mutke J, Barthlott W. 2005.** Patterns of vascular plant diversity at continental to global scales. *Biologische Skriften* **55**:521–531.
- Nadon GC. 1993.** The association of anastomosed fluvial deposits and dinosaur tracks, eggs, and nests: implications for the interpretation of floodplain environments and a possible survival strategy for ornithopods. *PALAIOS* **8**:31–44 DOI [10.2307/3515220](https://doi.org/10.2307/3515220).
- Novas FE, Agnolín FL, Ezcurra MD, Porfiri J, Canale JI. 2013.** Evolution of the carnivorous dinosaurs during the Cretaceous: the evidence from Patagonia. *Cretaceous Research* **45**:174–215 DOI [10.1016/j.cretres.2013.04.001](https://doi.org/10.1016/j.cretres.2013.04.001).
- Parrish JT, Daniel IL, Kennedy EM, Spicer RA. 1998.** Paleoclimatic significance of mid-Cretaceous floras from the middle Clarence Valley, New Zealand. *PALAIOS* **13**:149–159 DOI [10.2307/3515486](https://doi.org/10.2307/3515486).
- Partridge AD. 2006.** Jurassic-Early Cretaceous dinocyst zonation NWS Australia: 1st update of HMP 2004. In: Montell EC, ed. *Australian mesozoic and cenozoic palynology zonation—updated to the 2004 Geologic time scale*. Geoscience Australia.

- Peters MD, Christophel DC. 1978.** *Austrosequoia wintonensis*, a new taxodiaceous cone from Queensland, Australia. *Canadian Journal of Botany* **56**:3119–3128 DOI [10.1139/b78-374](https://doi.org/10.1139/b78-374).
- Petti FM, D’Orazi Porchetti S, Sacchi E, Nicosia U. 2010.** A new purported ankylosaur trackway in the Lower Cretaceous (lower Aptian) shallow-marine carbonate deposits of Puglia, southern Italy. *Cretaceous Research* **31**:546–552 DOI [10.1016/j.cretres.2010.07.004](https://doi.org/10.1016/j.cretres.2010.07.004).
- Platt NH, Meyer CA. 1991.** Dinosaur footprints from the Lower Cretaceous of northern Spain: their sedimentological and palaeoecological context. *Palaeogeography, Palaeoclimatology, Palaeoecology* **85**:321–333 DOI [10.1016/0031-0182\(91\)90165-N](https://doi.org/10.1016/0031-0182(91)90165-N).
- Pocknall D. 1978.** Relative pollen representation in relation to vegetation composition, Westland, New Zealand. *New Zealand Journal of Botany* **16**:379–386 DOI [10.1080/0028825X.1978.10425145](https://doi.org/10.1080/0028825X.1978.10425145).
- Pole M. 1992.** Cretaceous Macrofloras of Eastern Otago, New-Zealand: angiosperms. *Australian Journal of Botany* **40**:169–206 DOI [10.1071/BT9920169](https://doi.org/10.1071/BT9920169).
- Pole M. 1999.** Latest Albian-earliest Cenomanian monocotyledonous leaves from Australia. *Botanical Journal of the Linnean Society* **129**:177–186 DOI [10.1111/j.1095-8339.1999.tb00499.x](https://doi.org/10.1111/j.1095-8339.1999.tb00499.x).
- Pole M. 2000a.** Dicotyledonous leaf macrofossils from the latest Albian-earliest Cenomanian of the Eromanga Basin, Queensland, Australia. *Paleontological Research* **4**:39–52.
- Pole MS. 2000b.** Mid-Cretaceous conifers from the Eromanga Basin, Australia. *Australian Systematic Botany* **13**:153–197 DOI [10.1071/SB99001](https://doi.org/10.1071/SB99001).
- Pole MS, Douglas JG. 1999.** Bennettitales, Cycadales and Ginkgoales from the mid Cretaceous of the Eromanga Basin, Queensland, Australia. *Cretaceous Research* **20**:523–538 DOI [10.1006/cres.1999.0164](https://doi.org/10.1006/cres.1999.0164).
- Poropat SF, Mannion PD, Upchurch P, Hocknull SA, Kear BP, Elliott DA. 2015a.** Reassessment of the non-titanosaurian somphospondylan Wintonotitan wattsi (Dinosauria: Sauropoda: Titanosauriformes) from the mid-Cretaceous Winton Formation, Queensland, Australia. *Papers in Palaeontology* **1**:59–106 DOI [10.1002/spp2.1004](https://doi.org/10.1002/spp2.1004).
- Poropat SF, Mannion PD, Upchurch P, Hocknull SA, Kear BP, Kundrát M, Tischler TR, Sloan T, Sinapius GH, Elliott JA. 2016.** New Australian sauropods shed light on Cretaceous dinosaur palaeobiogeography. *Scientific Reports* **6**:34467 DOI [10.1038/srep34467](https://doi.org/10.1038/srep34467).
- Poropat SF, Upchurch P, Mannion PD, Hocknull SA, Kear BP, Sloan T, Sinapius GH, Elliott DA. 2015b.** Revision of the sauropod dinosaur *Diamantinasaurus matildae* Hocknull et al. 2009 from the mid-Cretaceous of Australia: implications for Gondwanan titanosauriform dispersal. *Gondwana Research* **27**:995–1033 DOI [10.1016/j.gr.2014.03.014](https://doi.org/10.1016/j.gr.2014.03.014).
- Rich TH, Rich PV. 1989.** Polar dinosaurs and biotas of the Early Cretaceous of Southeastern Australia. *National Geographic Research* **5**:15–53.
- Rich TH, Vickers-Rich P, Gangloff RA. 2002.** Polar dinosaurs. *Science* **295**:979–980 DOI [10.1126/science.1068920](https://doi.org/10.1126/science.1068920).

- Richter BD, Baumgartner JV, Powell J, Braun DP. 1996.** A method for assessing hydrologic alteration within ecosystems. *Conservation Biology* **10**:1163–1174 DOI [10.1046/j.1523-1739.1996.10041163.x](https://doi.org/10.1046/j.1523-1739.1996.10041163.x).
- Romilio A, Salisbury SW. 2011.** A reassessment of large theropod dinosaur tracks from the mid-Cretaceous (late Albian-Cenomanian) Winton Formation of Lark Quarry, central-western Queensland, Australia: a case for mistaken identity. *Cretaceous Research* **32**:135–142 DOI [10.1016/j.cretres.2010.11.003](https://doi.org/10.1016/j.cretres.2010.11.003).
- Romilio A, Salisbury SW. 2014.** Large dinosaurian tracks from the Upper Cretaceous (Cenomanian–Turonian) portion of the Winton Formation, Lark Quarry, central-western Queensland, Australia: 3D photogrammetric analysis renders the ‘stampede trigger’ scenario unlikely. *Cretaceous Research* **51**:186–207 DOI [10.1016/j.cretres.2014.06.003](https://doi.org/10.1016/j.cretres.2014.06.003).
- Romilio A, Tucker RT, Salisbury SW. 2013.** Re-evaluation of the Lark Quarry dinosaur tracksite (late Albian–Cenomanian Winton Formation, central-western Queensland, Australia): no longer a stampede? *Journal of Vertebrate Paleontology* **33**:102–120 DOI [10.1080/02724634.2012.694591](https://doi.org/10.1080/02724634.2012.694591).
- Roy K, Jablonski D, Valentine JW, Rosenberg G. 1998.** Marine latitudinal diversity gradients: tests of causal hypotheses. *Proceedings of the National Academy of Sciences of the United States of America* **95**:3699–3702 DOI [10.1073/pnas.95.7.3699](https://doi.org/10.1073/pnas.95.7.3699).
- Royer DL, Miller IM, Peppe DJ, Hickey LJ. 2010.** Leaf economic traits from fossils support a weedy habit for early angiosperms. *American Journal of Botany* **97**:438–445 DOI [10.3732/ajb.0900290](https://doi.org/10.3732/ajb.0900290).
- Russell AJ, Bidartondo MI, Butterfield BG. 2002.** The root nodules of Podocarpaceae harbour arbuscular mycorrhizal fungi. *New Phytologist* **156**:283–295 DOI [10.1046/j.1469-8137.2002.00504.x](https://doi.org/10.1046/j.1469-8137.2002.00504.x).
- Salgado L, Apesteguía S, Heredia SE. 2005.** A new specimen of *Neuquensaurus australis*, a Late Cretaceous saltasaurine titanosaur from north Patagonia. *Journal of Vertebrate Paleontology* **25**:623–634 DOI [10.1671/0272-4634\(2005\)025\[0623:ANSONA\]2.0.CO;2](https://doi.org/10.1671/0272-4634(2005)025[0623:ANSONA]2.0.CO;2).
- Salisbury SW, Molnar RE, Frey E, Willis PMA. 2006.** The origin of modern crocodyli-forms: new evidence from the Cretaceous of Australia. *Proceedings of the Royal Society B—Biological Sciences* **273**:2439–2448 DOI [10.1098/rspb.2006.3613](https://doi.org/10.1098/rspb.2006.3613).
- Salisbury SW, Romilio A, Herne MC, Tucker RT, Nair JP. 2017.** The Dinosaurian ichnofauna of the Lower Cretaceous (Valanginian–Barremian) Broome Sandstone of the Walmadany Area (James Price Point), Dampier Peninsula, Western Australia. *Journal of Vertebrate Paleontology* **36**:1–152.
- Scanlon JD, Hocknull SA. 2008.** A dolichosaurid lizard from the latest Albian (mid-Cretaceous) Winton Formation, Queensland, Australia. In: *Proceedings of the second Mosasaur meeting*. Hays: Fort Hays State University, 131–136.
- Senior B, Harrison PL, Mond A. 1978.** Geology of the Euromanga Basin. *Australian Bureau of Mineral Resources, Geology and Geophysics, Bulletin* **167**:1–102.
- Senior B, Mabbutt J. 1979.** A proposed method of defining deeply weathered rock units based on regional geological mapping in southwest Queensland. *Journal of the Geological Society of Australia* **26**:237–254 DOI [10.1080/00167617908729088](https://doi.org/10.1080/00167617908729088).

- Smith ND, Makovicky PJ, Angolin FL, Ezcurra MD, Pais DF, Salisbury SW. 2008.** A Megaraptor-like theropod (Dinosauria: Tetanurae) in Australia: support for faunal exchange across eastern and western Gondwana in the mid-Cretaceous. *Proceedings of the Royal Society B: Biological Sciences* **275**:2085–2093 DOI [10.1098/rspb.2008.0504](https://doi.org/10.1098/rspb.2008.0504).
- Spicer RA. 1991.** Plant taphonomic processes. In: *Taphonomy: releasing the data locked in the fossil record: topics in geobiology*. New York: Plenum Press, 71–113.
- Spicer RA, Herman AB, Kennedy EM. 2005.** The sensitivity of CLAMP to taphonomic loss of foliar physiognomic characters. *PALAIOS* **20**:429–438 DOI [10.2110/palo.2004.P04-63](https://doi.org/10.2110/palo.2004.P04-63).
- Syme CE, Salisbury SW. 2018.** Taphonomy of *Isisfordia duncani* specimens from the Lower Cretaceous (upper Albian) portion of the Winton Formation, Isisford, central-west Queensland. *Royal Society Open Science* **5**:Article 171651 DOI [10.1098/rsos.171651](https://doi.org/10.1098/rsos.171651).
- Syme CE, Welsh KJ, Roberts EM, Salisbury SW. 2016.** Depositional environment of the Lower Cretaceous (Upper Albian) Winton Formation at Isisford, central-west Queensland, Australia, inferred from sandstone concretions. *Journal of Sedimentary Research* **86**:1067–1082 DOI [10.2110/jsr.2016.67](https://doi.org/10.2110/jsr.2016.67).
- Tarduno JA, Brinkman DB, Renne PR, Cottrell RD, Scher H, Castillo P. 1998.** Evidence for extreme climatic warmth from late Cretaceous arctic vertebrates. *Science* **282**:2241–2243 DOI [10.1126/science.282.5397.2241](https://doi.org/10.1126/science.282.5397.2241).
- Thulborn RA. 2013.** Lark Quarry revisited: a critique of methods used to identify a large dinosaurian track-maker in the Winton Formation (Albian-Cenomanian), western Queensland, Australia. *Alcheringa* **37**:312–330 DOI [10.1080/03115518.2013.748482](https://doi.org/10.1080/03115518.2013.748482).
- Thulborn T. 2017.** Behaviour of Dinosaurian track-makers in the Winton Formation (Cretaceous, Albian–Cenomanian) at Lark Quarry, Western Queensland, Australia: running or swimming? *Ichnos* **24**:1–18 DOI [10.1080/10420940.2015.1129326](https://doi.org/10.1080/10420940.2015.1129326).
- Thulborn RA, Wade M. 1979.** Dinosaur stampede in the Cretaceous of Queensland. *Lethaia* **12**:275–279 DOI [10.1111/j.1502-3931.1979.tb01008.x](https://doi.org/10.1111/j.1502-3931.1979.tb01008.x).
- Thulborn RA, Wade M. 1984.** Dinosaur trackways in the Winton Formation mid Cretaceous of Queensland Australia. *Memoirs of the Queensland Museum* **21**:413–518.
- Tosolini A-MP, Korasidis VA, Wagstaff BE, Cantrill DJ, Gallagher SJ, Norvick MS. 2018.** Palaeoenvironments and palaeocommunities from Lower Cretaceous high-latitude sites, Otway Basin, southeastern Australia. *Palaeogeography, Palaeoclimatology, Palaeoecology* **496**:62–84 DOI [10.1016/j.palaeo.2018.01.017](https://doi.org/10.1016/j.palaeo.2018.01.017).
- Tucker RT, Roberts EM, Darlington V, Salisbury SW. 2017.** Investigating the stratigraphy and palaeoenvironments for a suite of newly discovered mid-Cretaceous vertebrate fossil-localities in the Winton Formation, Queensland, Australia. *Sedimentary Geology* **358**:210–229 DOI [10.1016/j.sedgeo.2017.05.004](https://doi.org/10.1016/j.sedgeo.2017.05.004).
- Tucker RT, Roberts EM, Henderson RA, Kemp AI. 2016.** Large igneous province or long-lived magmatic arc along the eastern margin of Australia during the Cretaceous? Insights from the sedimentary record. *Bulletin* **128**:1461–1480.

- Tucker RT, Roberts EM, Hu Y, Kemp A, Salisbury SW. 2013.** Detrital zircon age constraints for the Winton Formation, Queensland: contextualizing Australia's Late Cretaceous dinosaur faunas. *Gondwana Research* **24**:767–779 DOI [10.1016/j.gr.2012.12.009](https://doi.org/10.1016/j.gr.2012.12.009).
- Veevers JJ. 2000.** Mid-Cretaceous (99 Ma) & Mid-Eocene (43 Ma) events in the Indo-Australian & Antarctic plates and Coeval Swerves of the Pacific plate. In: Veevers JJ, ed. *Billion-year earth history of Australia and neighbours in Gondwanaland*. Sydney: GEMOC Press, 102–109.
- Veevers J. 2006.** Updated Gondwana (Permian-Cretaceous) earth history of Australia. *Gondwana Research* **9**:231–260.
- Vickaryous MK, Maryanska T, Weishampel DB. 2004.** Ankylosauria. In: Weishampel DB, Dodson P, Osmólska H, eds. *The dinosauria*. Second edition. Berkeley: University of California Press, 363–392.
- Vila B, Oms O, Fondevilla V, Gaete R, Galobart À, Riera V, Canudo JI. 2013.** The latest succession of dinosaur tracksites in Europe: Hadrosaur ichnology, track production and palaeoenvironments. *PLOS ONE* **8**:e72579.
- Vine R, Day R, Casey D, Milligan E, Galloway M, Exon N. 1967.** Revised nomenclature of the Rolling Downs Group, Eromanga and Surat Basins. *Queensland Government Mining Journal* **68**:144–151.
- Wang WL, Zheng SL, Zhang LJ, Pu RG, Zhang W, Wu HZ, Ju RH, Dong GY, Yuan H. 1989.** *Mesozoic stratigraphy and palaeontology of Western Liaoning (1)*. Beijing: Geological Publishing House.
- Wardle P. 1974.** The kahikatea (*Dacrycarpus dacrydioides*) forest of south Westland. *Proceedings of the New Zealand Ecological Society* **21**:62–71.
- Webb GJW, Manolis SC, Sack GC. 1983.** *Crocodylus johnstoni* and *C. porosus* coexisting in a tidal river. *Australian Wildlife Research* **10**:639–650 DOI [10.1071/WR9830639](https://doi.org/10.1071/WR9830639).
- Wells A, Duncan RP, Stewart GH. 2001.** Forest dynamics in Westland, New Zealand: the importance of large, infrequent earthquake-induced disturbance. *Journal of Ecology* **89**:1006–1018 DOI [10.1111/j.1365-2745.2001.00594.x](https://doi.org/10.1111/j.1365-2745.2001.00594.x).
- White ME. 1966.** Report on 1965 plant fossil collections. Record 1966/111. Bureau of Mineral Resources, Geology and Geophysics, Australia, 1–10.
- White ME. 1974.** Plant fossils from the Gilberts River and Winton formations, and the Pascoe River area, Queensland. Bureau of Mineral Resources, Geology and Geophysics, Australia, Record 1974/159, 1–5.
- White MA, Bell PR, Cook AG, Barnes DG, Tischler TR, Bassam BJ, Elliott DA. 2015a.** Forearm range of motion in *Australovenator wintonensis* (Theropoda, Megaraptoridae). *PLOS ONE* **10**:e0137709 DOI [10.1371/journal.pone.0137709](https://doi.org/10.1371/journal.pone.0137709).
- White MA, Bell PR, Cook AG, Poropat SF, Elliott DA. 2015b.** The dentary of *Australovenator wintonensis* (Theropoda, Megaraptoridae); implications for megaraptorid dentition. *PeerJ* **3**:e1512 DOI [10.7717/peerj.1512](https://doi.org/10.7717/peerj.1512).
- White MA, Benson RBJ, Tischler TR, Hocknull SA, Cook AG, Barnes DG, Poropat SF, Wooldridge SJ, Sloan T, Sinapius GHK, Elliott DA. 2013.** New *Australovenator* hind

limb elements pertaining to the holotype reveal the most complete neovenatorid leg. *PLOS ONE* **8**:e68649.

**White MA, Cook AG, Hocknull SA, Sloan T, Sinapius GHK, Elliott DA. 2012.** New forearm elements discovered of holotype specimen *Australovenator wintonensis* from Winton, Queensland, Australia. *PLOS ONE* **7**:e39364.

**White MA, Cook AG, Klinkhamer AJ, Elliott DA. 2016.** The pes of *Australovenator wintonensis* (Theropoda: Megaraptoridae): analysis of the pedal range of motion and biological restoration. *PeerJ* **4**:e2312 DOI [10.7717/peerj.2312](https://doi.org/10.7717/peerj.2312).

**White MA, Cook AG, Rumbold SJ. 2017.** A methodology of theropod print replication utilising the pedal reconstruction of *Australovenator* and a simulated paleo-sediment. *PeerJ* **5**:e3427 DOI [10.7717/peerj.3427](https://doi.org/10.7717/peerj.3427).

**Whitehouse RW. 1955.** The geology of the Queensland portion of the Great Artesian Basin. Artesian Water Supplies in Queensland: Department of the Co-ordinator General of Public Works, Queensland Parliamentary Papers A 56-1955 Appendix G, p. 1–20.

**Woodward HN, Rich TH, Vickers-Rich P. 2018.** The bone microstructure of polar “hypsilophodontid” dinosaurs from Victoria, Australia. *Scientific Reports* **8**:1162 DOI [10.1038/s41598-018-19362-6](https://doi.org/10.1038/s41598-018-19362-6).

**Wopfner H. 1963.** Post-Winton sediments of probable Upper Cretaceous age in the central Great Artesian Basin. *Transactions of the Royal Society of South Australia* **86**:247–253.

**Wopfner H. 1985.** Some thoughts on the post-orogenic development of northeastern South Australia and adjoining regions. *Special Publication of the South Australia Department of Mines & Energy* **5**:365–372.

**Xiang X-G, Wang W, Li R-Q, Lin L, Liu Y, Zhou Z-K, Li Z-Y, Chen Z-D. 2014.** Large-scale phylogenetic analyses reveal fagalean diversification promoted by the interplay of diaspores and environments in the Paleogene. *Perspectives in Plant Ecology, Evolution and Systematics* **16**:101–110 DOI [10.1016/j.ppees.2014.03.001](https://doi.org/10.1016/j.ppees.2014.03.001).