

## RESEARCH ARTICLE

# Uncovering phylogenetic relationships and genetic diversity of water dropwort using phenotypic traits and SNP markers

Qun Ji, Honglian Zhu, Xinfang Huang, Kai Zhou, Zhengwei Liu, Yalin Sun, Zhixin Wang, Weidong Ke<sup>ID</sup>\*

Institute of Vegetables, Wuhan Academy of Agricultural Sciences, Wuhan, Hubei, China

\* [wdke63@163.com](mailto:wdke63@163.com)



## OPEN ACCESS

**Citation:** Ji Q, Zhu H, Huang X, Zhou K, Liu Z, Sun Y, et al. (2021) Uncovering phylogenetic relationships and genetic diversity of water dropwort using phenotypic traits and SNP markers. PLoS ONE 16(7): e0249825. <https://doi.org/10.1371/journal.pone.0249825>

**Editor:** Tzen-Yuh Chiang, National Cheng Kung University, TAIWAN

**Received:** November 19, 2020

**Accepted:** March 25, 2021

**Published:** July 6, 2021

**Copyright:** © 2021 Ji et al. This is an open access article distributed under the terms of the [Creative Commons Attribution License](https://creativecommons.org/licenses/by/4.0/), which permits unrestricted use, distribution, and reproduction in any medium, provided the original author and source are credited.

**Data Availability Statement:** All the raw sequence data have been deposited in the National Center for Biotechnology Information (NCBI) Sequence Read Archive (SRA) database with accession number PRJNA693102.

**Funding:** This research was supported by the grant from the National Special Vegetable Industry Technology System of China (CARS-24-A-02), National Natural Science Foundation of China (31701920), and the Crop Germplasm Protection Program of Ministry of Agriculture and Rural

## Abstract

The water dropworts *Oenanthe linearis* Wall. ex DC. and *O. javanica* (Blume) DC. are aquatic perennial herbs that have been used in China as vegetables and traditional medicines. However, their phylogenetic relationships and genetic diversity are poorly understood. Here, we presented the phenotypic traits and genome-wide DNA marker-based analysis of 158 water dropwort accessions representing both species. The analysis revealed that *Oenanthe linearis* was readily segregated into linear-leaf and deep-cleft leaf water dropworts according to their leaf shapes at flowering. *Oenanthe javanica* was classified by clustering analysis into two clusters based mainly on the morphological characteristics of their ultimate segments (leaflets). A set of 11 493 high-quality single-nucleotide polymorphisms was identified and used to construct a phylogenetic tree. There was strong discrimination between *O. linearis* and *O. javanica*, which was consistent with their phenotype diversification. The population structure and phylogenetic tree analyses suggested that the *O. linearis* accessions formed two major groups, corresponding to the linear-leaf and deep-cleft leaf types. The most obvious phenotypic differences between them were fully expressed at the reproductive growth stage. A single-nucleotide polymorphism-based analysis revealed that the *O. javanica* accessions could be categorized into groups I and II. However, this finding did not entirely align with the clusters revealed by morphological classification. Landraces were clustered into one group along with the remaining wild accessions. Hence, water dropwort domestication was short in duration. The level of genetic diversity for *O. linearis* ( $\pi = 0.1902$ ) was slightly lower than that which was estimated for *O. javanica* ( $\pi = 0.2174$ ). There was a low level of genetic differentiation between *O. linearis* and *O. javanica* ( $F_{st} = 0.0471$ ). The mean genetic diversity among accessions ranged from 0.1818 for the linear-leaf types to 0.2318 for the group II accessions. The phenotypic traits and the single-nucleotide polymorphism markers identified here lay empirical foundation for future genomic studies on water dropwort.

Affairs of China (19190162). The funders had no role in study design, data collection and analysis, decision to publish, or preparation of the manuscript.

**Competing interests:** The authors have declared that no competing interests exist.

## Introduction

The genus *Oenanthe* L. (Apiaceae) contains ~30 species that are widely distributed throughout Asia, Africa, Europe and North America [1]. *Oenanthe* is an aquatic perennial herb with widely hydrochorous dispersal [1]. *Oenanthe javanica* (Blume) DC. is consumed as a vegetable in China [2, 3], and contains moderate amounts of macronutrients, minerals, polyphenols, and carotenoids, and large quantities of lutein [4]. *Oenanthe javanica* has been used in traditional Chinese medicine. It contains isorhamnetin [5], hyperoside [6] and persicarin [7], all of which have pharmacological activities.

Nine species and one variety of *Oenanthe* native to China are recorded in the Chinese version of the “Flora of China” [8]. In the revised English translation of the “Flora of China”, only five *Oenanthe* species and six subspecies are recorded [1]. In recent years, progress has been made in the elucidation of phylogenetic relationships within subfamily Apiodeae [9, 10], tribe Oenanthae [11, 12] and genus *Oenanthe* [13] of the Apiaceae family via polymerase chain reaction (PCR) and direct DNA sequencing. Based on complete chloroplast genome sequences, the phylogenetic relationships among *O. javanica* and 34 related species from 29 Apiaceae genera were analyzed [14]. The taxonomic status of *Oenanthe* spp. in Apiaceae was investigated extensively in the aforementioned studies. However, only a few investigations focused on the phylogenetic relationships among *Oenanthe* species [13] or the levels of genetic variation within this taxa [13, 15, 16]. A previous attempt to classify of 133 *Oenanthe linearis* Wall. ex DC. and *O. javanica* accessions relied on morphological traits. It categorized *Oenanthe linearis* accessions into linear-leaf and deep-cleft leaf types and divided *O. javanica* accessions into small-leaf and big-leaf types [17].

Genomic tools such as molecular markers clarify the taxonomic status, phylogenetic relationships, genetic diversity, and population structure of plant genetic resources. This information could be applied towards genetic improvement. Only a few studies have implemented nuclear rDNA internal transcribed spacer sequences (nrDNA ITS) [13], enzyme electrophoresis [15], random amplified polymorphic DNA [16], or simple sequence repeats [18, 19] as molecular markers to study genetic diversity and variation in *Oenanthe* accessions. However, they only used a few markers and representative *Oenanthe* accessions within a limited geographical region. In contrast, single-nucleotide polymorphisms (SNPs) are far more powerful, abundant, and stable than traditional markers. Provided that a reference genome is available, SNPs can be generated by whole genome resequencing. However, they are not cost-effective [20]. For species with or without reference genomes, SNPs are identified via genome complexity-reduction protocols such as genotyping-by-sequencing [21], specific length amplified fragment sequencing [22] and restriction site-associated DNA sequencing (RAD-seq) [23]. These modalities are inexpensive and have high throughput. These and other high-throughput DNA sequencing technologies have been applied to many species in various types of genetic/genomic research, such as quantitative trait loci mapping [24], phylogenetic analyses [25], crop origin and domestication [26, 27], genome-wide association studies [28, 29], and functional markers development [30].

Several *Oenanthe* species may have been cultivated and used as vegetables in different regions of China, they were classified as *O. javanica* and categorized as pointed-leaf or round-leaf type by local farmers and researchers [2, 3]. In our field investigation, we identified two species of widely cultivated *Oenanthe* based on their morphological characteristics and established that the pointed-leaf and round-leaf types corresponded to *O. linearis* and *O. javanica*, respectively. It is already known that *O. linearis* and *O. javanica* differ in terms of leaf shapes. However, we wanted to know whether different phenotypes exist within these species. To preserve and sustainably use the *Oenanthe* germplasm, we collected *Oenanthe* accessions and

maintained them at the Wuhan National Germplasm Repository for Aquatic Vegetables. We studied the phylogenetic relationships and genetic diversity of 158 *O. linearis* and *O. javanica* accessions collected across a wide geographical area in China and its neighboring countries. To these ends, we developed an integrated workflow by combining the morphological traits and RAD-seq-generated SNPs to discover phenotypic and genome-wide variations in water dropwort. This information could lay empirical foundation for the collection, preservation, evaluation and utilization of these genetic resources.

## Materials and methods

### Plant materials and DNA extraction

The plant materials included 50 *O. linearis* and 108 *O. javanica* accessions. Seven *O. linearis* and 18 *O. javanica* accessions were landraces, while the remaining 133 were wild. Twenty-three of the landraces were localized to the main distribution areas of China, whereas one was found in Japan and another was identified in Vietnam. A total of 132 wild water dropwort were collected from the natural distribution areas of China and one wild water dropwort was collected in Vietnam (Fig 1, S1 Table). Of the 158 accessions, 155 were from China including 32 from Jiangsu, 24 from Hubei, 23 from Anhui, 21 from Yunnan, 10 from Hunan, eight each from Henan, Guizhou and Sichuan, six from Jiangxi, five from Chongqing, three from Shaaxi, two each from Hainan and Guangxi, and one each from Fujian, Shandong, and Liaoning. Hence, the distribution areas in China were over-represented. All 158 accessions were sampled from the Wuhan National Germplasm Repository for Aquatic Vegetables.

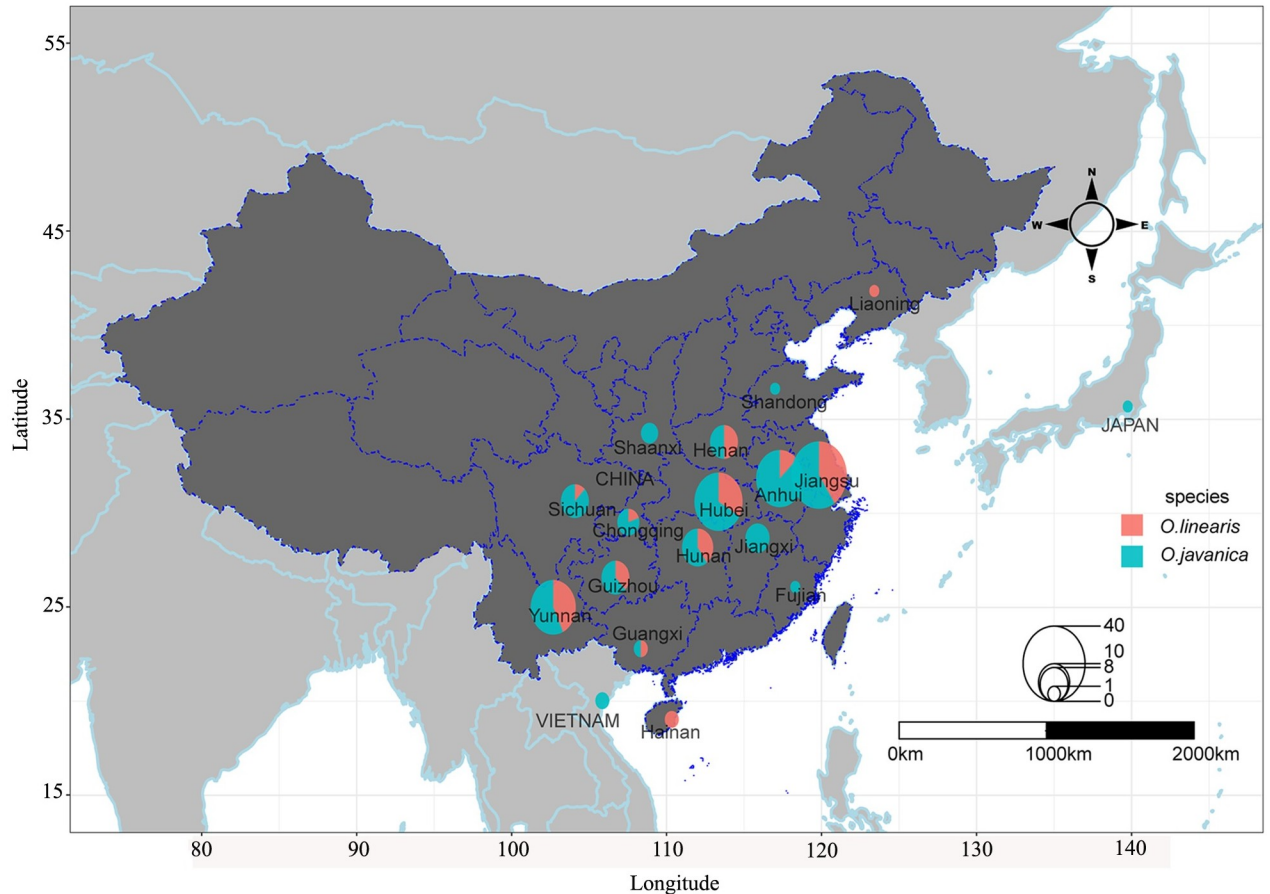
Bulked young leaves from each accession were collected for genomic DNA extraction with a DP305 DNA extraction kit (Tiangen, Beijing, China) following the manufacturer's instructions. DNA quality and concentration were evaluated by separation on a 1% agarose gel and reading in a NanoDrop-2000 spectrophotometer (Thermo Fisher Scientific, Waltham, MA, USA). The DNA concentrations were adjusted to 50 ng  $\mu\text{l}^{-1}$ .

### Phenotypic traits

The 158 accessions were individually planted and vegetatively propagated on 6-m<sup>2</sup> plots at the Wuhan National Germplasm Repository for Aquatic Vegetables. The key morphological and agronomical characteristics, plant propagation pathway (rhizome or stolon), flowering time, plant height, stem diameter, leaf shape, leaf state (even or uneven), leaf margin, and ultimate segment (leaflet) length and width were measured and recorded for six representative plants per plot per year during 2016–2018. Data processing including univariate ANOVA and cluster analysis were performed in SPSS v. 22 (IBM Corp., Armonk, NK, USA). SPSS TwoStep cluster analysis was applied because its algorithm creates clusters based on both categorical and continuous variables [31]. Clustering was analyzed using the log-likelihood algorithm based on the categorical variables leaf state and margin and the continuous variables flowering time, plant height, stem diameter, and ultimate segment length: width ratio.

### RAD sequencing, read clustering, and SNP exploitation

RAD library preparation, sample indexing, and pooling were conducted for all accessions according to Baird et al. [32]. A DNA digestion experiment was performed to test various restriction enzymes and established that *Ape*KI should be used to digest the DNA. The fragments were ligated to the Solexa P1 adapter containing a unique barcode for each DNA sample. The 300–700-bp adapter-ligated fragments were collected to ligate the P2 adapter. Only fragments with both P1 and P2 adapters could be enriched by PCR amplification. Amplified



**Fig 1. Geographic distribution of water dropwort accessions in China and its neighboring countries used in this study.** Circle size is proportional to the number of accessions originating within a particular region. Different colors represent proportions of different species. Accessions of *O. linearis* and *O. javanica* mainly from eastern, middle-southern, and southwestern China, especially from Jiangsu, Anhui, Hubei, and Yunnan Provinces.

<https://doi.org/10.1371/journal.pone.0249825.g001>

fragments ranging from 200–400 bp and 400–600 bp were selected for library construction. Paired-end sequencing was performed with an Illumina HiSeq2500 (Illumina Inc., San Diego, CA, USA). For QC, the ratio of sequencing nucleotides with quality value > Q30 (0.1% sequencing error) was determined, and the GC content was also assayed. High-quality reads were trimmed from the 3' end to 150 bp. Trimmed reads with clear index information were clustered into RAD-tags via *ustacks* based on their sequence similarity [33] to generate candidate alleles for each locus. The RAD-tags were grouped by *cstacks* into clusters under the default SNP calling parameters. SNPs with minor allele frequency (MAF) < 0.05 and integrity < 0.8 across genotype datasets for all accessions were discarded.

### Phylogenetic relationship, population structure, and genetic diversity analyses

SNP genotype was used to calculate the genetic distances among the 158 accessions. Reliable and accurate phylogenetic tree was generated using the neighbor-joining (NJ) method in MEGA5 [34]. A bootstrap consensus tree was obtained using 1,000 replicates. Population structure was analyzed in ADMIXTURE based on the maximum-likelihood method [35]. Five independent runs were performed per *K* value with a 1–10 range constraint. Accessions were

assigned to corresponding memberships with groups based on their maximum membership probabilities. Phylogenetic tree and population structure analyses were validated using principal component analysis (PCA), conducted in Cluster v. 3.0 [36]. The Stacks populations program [37] was applied to calculate nucleotide diversity ( $\pi$ ) and pairwise differentiation levels (Fst). Nei's genetic diversity index and Nei's genetic distance were calculated in the R packages "snpReady" and "StAMPP", respectively [38, 39].

SNPs discovered by RAD-seq and used in genetic diversity estimation might introduce error by misalignments sequences via paralogy. Random subsampling assesses the stability of phylogenetic analyses by selecting random locus subsamples and comparing their phylogenetic analyses [40]. Here, SNPs were sampled 10 times at random from the total dataset at a 1:10 frequency to build 10 different subsamples for population structure analyses and to test for consistency among various SNP subsample analyses.

## Results and discussion

### Phenotypic differences between *O. linearis* and *O. javanica*

*Oenanthe linearis* and *O. javanica* leaves tended to be pointed and round respectively, especially at flowering. The mean length:width ratios of ultimate segments were 2.27 and 1.65 for *O. linearis* and *O. javanica* respectively (S2 Table). The rhizomes of *O. linearis* arising from the axillary buds on the underground nodes and stolons of *O. javanica* arising from the axillary buds in the leaf axils could develop into offshoots. The flowering time of *O. linearis* was ~20 d earlier than that of *O. javanica*. The former started to flower in early May, whereas the latter began to flower in late May (S2 Table).

Fifty accessions were recorded as *O. sinensis* Dunn by the Wuhan National Germplasm Repository for Aquatic Vegetables according to the Chinese version of the "Flora of China" [8]. However, they were re-classified as *O. linearis* based on the revised English translation of the "Flora of China" wherein *O. sinensis* is synonymous with *O. linearis* [1].

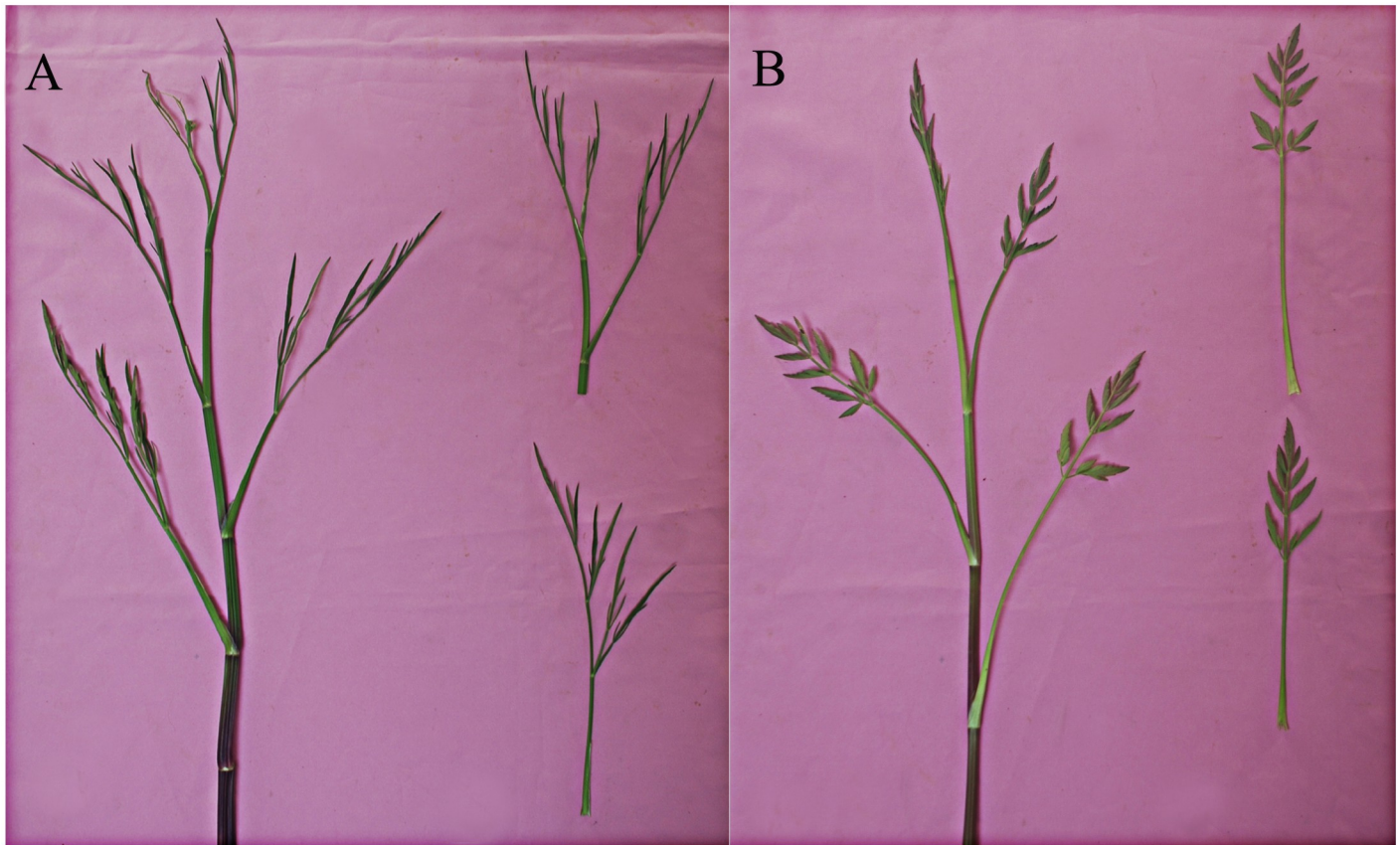
### Phenotypic differences among *O. linearis* accessions

Of the 50 aforementioned *O. linearis* accessions, 30 were LL and 20 were DCL types (Fig 2, S2 Table). There were no obvious morphological differences between LL and DCL during vegetative growth. However, as the plants entered reproductive growth, it was easier to distinguish LL from DCL according to their leaf shapes. As a rule, LL flowered ~15 d earlier than DCL (S2 Table).

The mean DCL plant height (65.71 cm) was greater than that of LL (61.70 cm), but these differences were not statistically significant ( $P = 0.296$ ). There were also no significant differences between LL and DCL in terms of stem diameter ( $P = 0.107$ ) (LL: 0.67 cm; DCL: 0.79 cm) (S2 Table).

Ye et al. [17] analyzed 35 *O. linearis* accessions and proposed that they could be classified into LL and DCL types based on their leaf shapes. In the present study, *O. linearis* was readily categorized into LL and DCL based on their leaf shapes and flowering time. Mean plant height and stem diameter were larger for the DCL than the LL types. Though these findings corroborate those of Ye et al., univariate ANOVA was not conducted in the prior work. Within *O. linearis*, five accessions were apparently intermediate between LL and DCL types. Most *O. linearis* accessions could be easily categorized as LL or DCL after bolting. The five aforementioned accessions were classified as DCL but identified as LL at full bloom. Thus, the *O. linearis* phenotype should be accurately identified at full bloom, as its leaf morphology is completely expressed by that time.





**Fig 2. Morphology of the two types of *O. linearis*.** (A) Linear-leaf type accession; (B) Deep-cleft leaf type accession.

<https://doi.org/10.1371/journal.pone.0249825.g002>

### Phenotypic differences among *O. javanica* accessions

Our phenotypic trait investigation disclosed that leaf shape indicated by ultimate segment length:width ratio was more important than the separate ultimate segment length and width. Hence, the ultimate segment length:width ratio was used in the clustering analysis. The 108 *O. javanica* accessions were divided into two clusters, as this number was optimal and automatically selected by the TwoStep cluster analysis procedure in SPSS. The descending order of trait importance for cluster formation was leaf margin, leaf state, stem diameter, ultimate segment length:width ratio, flowering time, and plant height. Cluster 1 contained 73 accessions, while cluster 2 contained the remaining 35 (S2 Table). The accessions in cluster 1 produced even ultimate segments with obtusely serrate or shallowly serrate margins. The accessions in cluster 2 had mostly uneven ultimate segments with deeply serrate margins (Fig 3, Table 1).

The mean ultimate segment lengths for clusters 1 and 2 were 2.71 cm and 2.85 cm, respectively, but they did not significantly differ ( $P = 0.282$ ). The ultimate segment widths of the cluster 1 accessions were significantly larger than those of cluster 2 accessions. Their means were 1.88 cm and 1.52 cm, respectively ( $P < 0.01$ ). The mean of the ultimate segment length:width ratio for cluster 1 (1.48) was significantly smaller than that of cluster 2 (1.99) ( $P < 0.01$ ) (Table 1, S2 Table). Though ultimate segment lengths did not significantly differ between clusters, there was a significant difference between clusters in terms of ultimate segment width. Thus, the ultimate segments of cluster 1 were significantly wider than those of cluster 2.



**Fig 3. *Oenanthe javanica* phenotypes.** (A) *O. javanica* accession, and ultimate segment shown with arrow. (B) From left to right: even ultimate segment with obtusely serrate margin, ultimate segment with shallowly serrate margin, and uneven ultimate segment with deeply serrate margin.

<https://doi.org/10.1371/journal.pone.0249825.g003>

The mean plant height of cluster 2 accessions (56.45 cm) was greater than that of the cluster 1 accessions (54.98 cm). Nevertheless, the differences between the clusters were not significant ( $P = 0.524$ ). In contrast, the stem diameters significantly differ between the clusters ( $P < 0.01$ ) (cluster 1: 1.05 cm, cluster 2: 0.69 cm) (Table 1, S2 Table). Therefore, *O. javanica* genotypes with long stems and wide stems are suitable for cultivation. Here, several accessions in both clusters were landraces.

Ye et al. [17] analyzed 98 *O. javanica* accessions and revealed that they could be classified as small-leaf or big-leaf types based on the leaf sizes and margins on ultimate segments. In the present study, it was difficult to categorize *O. javanica* accessions into subgroups based only on leaf sizes and margins, as these traits exhibited no clear morphological patterns. Therefore, the SPSS TwoStep cluster analysis procedure was implemented. Clusters 1 and 2 corresponded to big-leaf and small-leaf types, respectively. The accessions in cluster 1 and the big-leaf types had the same characteristics of leaf margins, stem diameters and ultimate segment widths. The accessions in cluster 2 and the small-leaf types also presented with the same leaf margins, stem diameters, and ultimate segment widths.

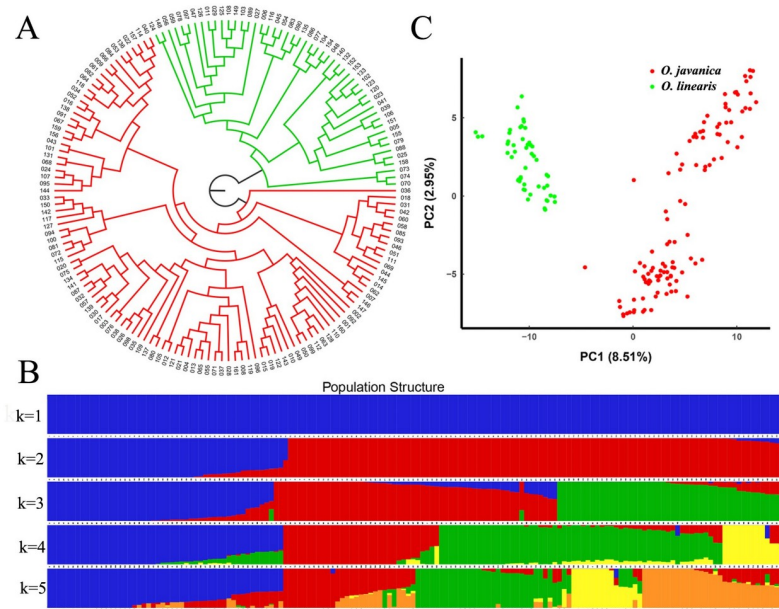
## RAD sequencing data and SNP characterization

We used *fastp* to remove low-quality reads from the raw data including adapter sequences, repetitive or ploy-N-containing reads, or empty reads [41], RAD sequencing then generated

**Table 1. Summary statistics of *O. javanica* population phenotypic traits.**

Trait	Cluster 1 (n = 73)	Cluster 2 (n = 35)
Leaf margin	Shallowly serrate (42.5%); obtusely serrate (57.5%)	Deeply serrate (100%)
Leaf state	Uneven (21.9%); even (78.1%)	Uneven (80%); even (20%)
Ultimate segment length Mean (cm)	2.71	2.85
Ultimate segment width Mean (cm)	1.88	1.52
Ultimate segment length:width ratio Mean	1.48	1.99
Plant height Mean (cm)	54.98	56.45
Stem diameter Mean (cm)	1.05	0.69

<https://doi.org/10.1371/journal.pone.0249825.t001>



**Fig 4. Population structure of 158 water dropwort accessions.** (A) Phylogenetic tree of 158 water dropwort accessions inferred from 11,493 SNPs. *Oenanthe linearis* accessions are in green and *O. javanica* accessions are in red. (B) Population structure generated using ADMIXTURE. Each color represents one population. Individual accessions are represented by vertical bars. Ratio of each colored segment in each vertical bar represents the membership probability of accessions belonging to different populations. (C) PCA plots of first two components of 158 water dropwort accessions.

<https://doi.org/10.1371/journal.pone.0249825.g004>

446.03 million paired-end reads with each 150 bp in size. The ratio of sequencing nucleotides with quality value > Q30 was 89.30%. The GC content of the filtered reads from all accessions was in the range of 33.89–37.61%, and the average was 35.26%. The number of reads per accession was in the range of 1,701,586–7,057,194, and the average was 2,822,981. The read coverage per accession was in the range of 6.94–25.23 $\times$ , and the mean sequencing depth was 12.81 $\times$  (S3 Table). Of 123,310 SNPs, 11,493 were high quality and were detected based on the thresholds  $MAF \geq 0.05$  and  $SNP \text{ integrity} \geq 0.8$  (S4 Table).

Water dropwort is mainly propagated asexually. For all accessions, 3.58% of the polymorphic SNP loci were heterozygous. On average, *O. javanica* had a lower frequency of heterozygous SNP loci (3.14%) than *O. linearis* (4.53%) (S5 Table). Their heterozygous SNP ratios were significantly lower than that of apple (22.35%). For *Oenanthe* spp., then, asexual reproduction decreased heterozygosity to a greater extent than hybridization [42].

### Germplasm phylogeny and population structure

The phylogenetic relationships among the 158 accessions based on the 11,493 SNPs are shown in Fig 4A. Separation between species was mirrored in genotype-based clustering. *Oenanthe linearis* and *O. javanica* clustered into two independent clades. One clade comprised 50 *O. linearis* accessions from 12 provinces in China. The other clade consisted of 108 *O. javanica* accessions including 105 from 14 provinces in China, two from Vietnam, and one from Japan (S1 Table). The estimated membership fractions of the 158 accessions using the population structure demonstrated that the germplasm resources formed two populations (Fig 4B). Population Q1 contained 50 *O. linearis* accessions, whereas all 108 accessions in population Q2 were *O. javanica*. The population structure prediction was consistent with that of the



phylogenetic tree analysis. Moreover, the PCA separated the 158 accessions into two populations as well. Thus, there was a high level of discrimination between species (Fig 4C).

The population structure models of the 158 accessions based on the 10 SNP subsamples were consistent with each other and with the result predicted according to the entire SNP set except accession 36. The latter was classified into one group based on population structure models predicted from two SNP subsamples and categorized into the other group according to the results for the other eight SNP subsamples (S6 Table). The genetic composition of accession 36 suggested the presence of a combination of two different genetic backgrounds accounting for 56% and 44% of the total (Fig 4B). The genetic compositions of several other accessions also indicated the occurrence of a mixture of various genetic backgrounds. Hence, gene flow must have taken place between *O. linearis* and *O. javanica* and influenced the genetic integrity of *Oenanthe* spp.

The phylogenetic and population structure analyses and PCA disclosed that all 158 accessions could be divided into *O. linearis* and *O. javanica*. The population structure models based on 10 different SNP subsamples validated this conclusion.

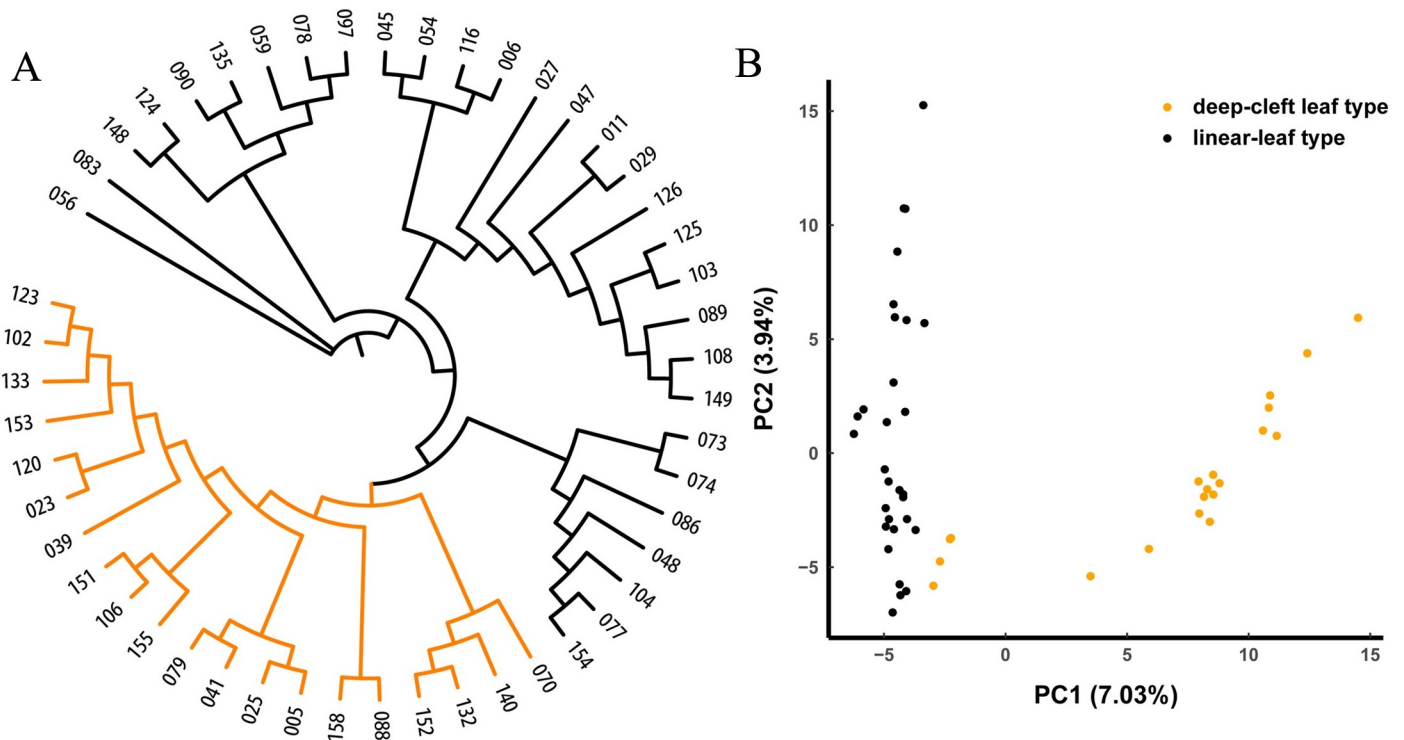
The complete *O. javanica* chloroplast genome sequence was compared with those of 29 Apiaceae genera (34 species). A phylogenetic analysis showed that *O. javanica* was nested in the tribe Oenanthae of Apiaceae and was closely related to *Cicuta virosa* and *Cryptotaenia japonica* [14]. Though the aforementioned study clarified *O. javanica* taxonomy in Apiaceae, it only used this species in *Oenanthe*.

A previous study [13] used nrDNA ITS sequences for 170 *Oenanthe* accessions (165 from 15 provinces of China, two from North Korea, one from Japan and two from Vietnam). The authors concluded that the accessions clustered into two groups closely related to *O. mildbraedii* and *O. sarmentosa* rather than *O. linearis* and *O. javanica*. Whereas the latter two are the most widely cultivated and used *Oenanthe* species in various regions of China, neither *O. mildbraedii* nor *O. sarmentosa* has been recorded in China. The aforementioned study comprised GenBank ITS sequences for nearly all currently reported *Oenanthe* species including one accession from *O. linearis* subsp. *linearis*, two from *O. linearis* subsp. *rivularis*, one from *O. sinensis*, one from *O. javanica*, one from *O. javanica* subsp. *javanica*, and one from *O. javanica* subsp. *stolonifera*. *Oenanthe linearis* subsp. *linearis* and *O. javanica* subsp. *javanica* were closely related, while the other five accessions were clustered together. This discovery is inconsistent with the logical assumption that accessions of the same species should be closely related. Plausible interpretations of this finding were that the number of markers used in that study was limited, or  $\geq 1$  of these seven accessions was misnamed. The ITS sequences of the seven accessions were processed by different researchers. Our results combined with those of the previous study suggest that further investigations over a wider geographic area are required to resolve the taxonomic discrepancies, as *Oenanthe* accessions are very widespread and have a very diverse morphology.

### ***Oenanthe linearis* accession phylogeny and population structure**

Different species predominated in the ADMIXTURE analysis. Therefore, the population structure models were analyzed either with *O. linearis* or *O. javanica* populations under the assumption of  $K$  in the range of 1–10. An optimal  $K = 2$  was proposed for *O. linearis* and indicated that this population could be categorized into two groups (S1 Fig). Group 1 contained 34 accessions and group 2 contained 16. Group 1 included 30 LL and 4 of 20 DCL. All 16 accessions in group 2 were DCL.

The *O. linearis* accessions were further classified into two groups with distinct geographic distribution patterns (Fig 5A, Table 2). Group A contained 30-LL accessions mainly from



**Fig 5. Population structure of 50 *O. linearis* accessions.** (A) Phylogenetic tree of 50 *O. linearis* accessions. Group A (linear-leaf type) is shown in black and Group B (deep-cleft leaf type) is shown in orange. (B) PCA plots of first two components of 50 *O. linearis* accessions.

<https://doi.org/10.1371/journal.pone.0249825.g005>

middle-southern and eastern China. Group B consisted of 20 DCL-type accessions mainly from southwestern and eastern China. Approximately, 27% of the LL and 40% of the DCL types originated from Jiangsu and Anhui Provinces in eastern China. Both of these regions are major water dropwort producers. Phylogenetic relationships based on genetic distances were relatively consistent with those predicted by the estimated population structure. The PCA suggested a two-cluster structure for *O. linearis* population (Fig 5B).

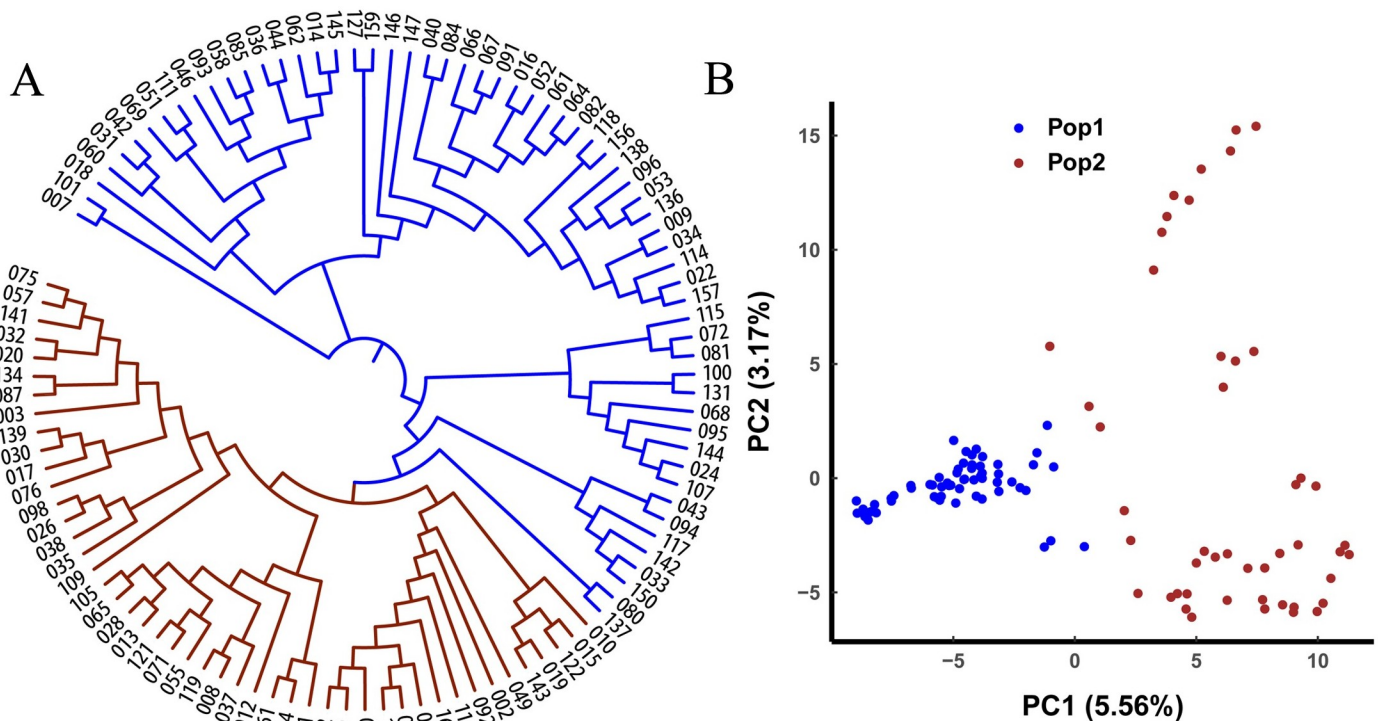
Water dropwort with long, wide, and erect stems are suitable for cultivation. Therefore, wild plants with those morphological traits might have been locally collected and cultivated. Over time, they became landraces. Within *O. linearis*, four landraces intermingled with the wild accessions into the DCL-type group. Another three landraces were clustered into the LL-type group along with the wild accessions. Hence, the domestication period was short, and the degree of domestication was low for water dropwort.

**Table 2. Geographic origin of each accession in the four groups.**

Group	Total	EC	MSC	SWC	NWC	NEC	Japan	Vietnam
A	30	8	16	5	--	1	--	--
B	20	8	3	9	--	--	--	--
I	61	23	19	18	1	--	--	--
II	47	24	8	10	2	--	1	2

EC, eastern China; MSC, middle-southern China; SWC, southwestern China; NWC, northwestern China; NEC, northeastern China.

<https://doi.org/10.1371/journal.pone.0249825.t002>



**Fig 6. Population structure of 108 *O. javanica* accessions.** (A) Phylogenetic analysis of 108 *O. javanica* accessions. Group I accessions are in blue, and group II accessions are in brown. (B) PCA plots of first two components of the 108 *O. javanica* accessions. Subpopulations defined by the phylogenetic tree include Pop1 (group I) and Pop2 (group II).

<https://doi.org/10.1371/journal.pone.0249825.g006>

### *Oenanthe javanica* accession phylogeny and population structure

The maximum likelihood of the estimated membership fractions of the 108 *O. javanica* was in the range of 1–10 for different  $K$  values.  $K = 2$  was optimal for this population (S2 Fig). Thus, *O. javanica* could be categorized into two groups, with 61 and 47 accessions.

To clarify the phylogenetic relationship among *O. javanica* accessions, we used the NJ method in MEGA to construct a phylogenetic tree that could be divided into two groups (Fig 6A). The accessions in each group had distinct geographic distribution patterns (Table 2). Group I included 61 accessions mainly from eastern, middle-southern, and southwestern China, group II comprised 47 accessions mainly from eastern China. As Jiangsu and Anhui Provinces are the main water dropwort-producing areas, 36% of the *O. javanica* accessions were collected from there. Once again, landraces were clustered with the wild accessions into a single group. This finding was consistent with the assignments determined using ADMIXTURE. The PCA also separated the 108 *O. javanica* accessions into two major groups (Fig 6B).

The previous study was based exclusively on the morphological characters of the accessions and used a relatively small germplasm sample. It concluded that *O. linearis* could be classified into LL and DCL types, while *O. javanica* could be divided into small-leaf and big-leaf types [17]. To date, the population structure of the water dropwort germplasm has not been addressed in depth. In the present study, we first investigated the phenotypic traits of the water dropwort and then classified the germplasm resources. The two phenotypically based types of *O. linearis* substantially differed in terms of DNA sequence (Fig 5). For this reason, the morphological traits investigated here were suitable to classify *O. linearis*. For *O. javanica*, however,

there was 28% discrepancy between the morphological classification and the SNP-based phylogenetic tree. Clusters 1 and 2 corresponded to groups II and I, respectively. Group I (61 accessions) included 33 accessions in cluster 2 (35 accessions) and 28 accessions in cluster 1 (73 accessions). Group II (47 accessions) comprised 45 accessions in cluster 1 (73 accessions) and 2 accessions in cluster 2 (35 accessions). An attribute importance analysis showed that leaf margin and state were the most important variables in cluster formation. However, these were categorical. Hence, the survey results could have been biased by the subjective judgments of the researchers. Greater objectivity could have been obtained by analyzing continuous variables. Overall, SNP-based classification was more accurate than morphological classification because phenotypic traits are affected by environmental conditions and subjective judgments. Joint morphological and SNP-based classification analyses suggested that other phenotypic traits of *O. javanica* must be investigated to identify the most important ones differentiating the subgroups. Those traits such as inflorescence number, flower number in inflorescence, seed setting rate, germination rate, and stolon number per plant should be considered in future research.

### Genetic diversity and population differentiation

Several genetic parameters were separately estimated to evaluate the genetic diversity and the extent of differentiation between the two species. The global genetic diversity indices ( $\pi$ ) for the *O. linearis* and *O. javanica* populations were 0.1902 and 0.2174, respectively (Table 3). As both species could be further classified into different groups, we separately investigated the detailed relationship between the LL and DCL types and between groups I and II. Within *O. linearis*, the diversity of the LL type ( $\pi = 0.1818$ ) was slightly lower than that of the DCL type ( $\pi = 0.1901$ ). This discovery is consistent with Nei's genetic diversity indices (0.18 for LL type and 0.20 for DCL type). Within *O. javanica*, the diversity of group I ( $\pi = 0.1985$ ) was slightly lower than that of group II ( $\pi = 0.2318$ ). This finding was also confirmed by Nei's genetic diversity indices (0.27 for group I and 0.32 for group II). The  $F_{st}$  obtained from the comparison between LL and DCL types and between groups I and group II were 0.0347 and 0.0261, respectively. A relatively higher  $F_{st}$  (0.0471) was obtained from the comparison between *O. linearis* and *O. javanica*. A pairwise Nei's genetic distance analysis between groups I and II indicated the lowest differentiation (0.0143). The Nei's genetic distance was the highest between *O. linearis* and *O. javanica* (0.0303). DCL types had wider genetic diversity than LL types, while group II had wider genetic diversity than group I even when the numbers of DCL types and group II were smaller than those of LL types and group I. *Oenanthe linearis* and *O. javanica* had the highest differentiation, while groups I and II were the most closely related.

The overall sequence diversity levels ( $\pi$ ) for *O. linearis* and *O. javanica* were 0.1902 and 0.2174, respectively. In contrast,  $\pi = 0.1539$  for apple [42], 0.0019 for soybean, and 0.0024 for rice [27]. The value of  $\pi$  varied only slightly among the four water dropwort groups (range 0.1818–0.2318). The  $\pi$  value for apple was low, as fruit quality underwent selection during domestication. The  $\pi$  values were extremely low for soybean and rice, as these two species

**Table 3. Summary statistics for *O. linearis* and *O. javanica* populations based on SNP calculation.**

Parameter	<i>O. linearis</i>			<i>O. javanica</i>		
	LL	DCL	Total	Group I	Group II	Total
Nucleotide diversity ( $\pi$ )	0.1818	0.1901	0.1902	0.1985	0.2318	0.2174
Nei's genetic diversity index	0.18	0.20	0.20	0.27	0.32	0.30

LL, linear-leaf type; DCL, deep-cleft leaf type; groups I and II defined by phylogenetic tree.

<https://doi.org/10.1371/journal.pone.0249825.t003>



encountered a major genetic bottleneck during domestication. This phenomenon may not have occurred in water dropwort. This plant is widely distributed in wild habitats and has been used as a vegetable for > 3,000 y. However, it has only been cultivated over the last ~300 y. Thus, water dropwort can now be harvested from both wild and cultivated sources as a vegetable crop.

## Conclusions

Phenotypic traits and SNP-based analyses were combined to investigate the phylogenetic relationships and genetic diversity of water dropwort. The SNPs generated by RAD-seq in the present study are the most abundant markers acquired for *O. linearis* and *O. javanica*. These species are most commonly distributed over a wide geographical area of China and its neighboring countries. SNP-based molecular characterization of the water dropwort collection examined here revealed broad sequence variations between *O. linearis* and *O. javanica*. This finding was consistent with phenotype diversification. The phylogenetic tree and the PCA plots disclosed that *O. linearis* is readily classified into linear-leaf and deep-cleft leaf types, and these traits are most effectively distinguished at reproductive growth. SNP-based analysis revealed that *O. javanica* is categorized into two groups that do not fully corresponded to the two clusters determined by the phenotypic trait clustering analysis. *Oenanthe javanica* displayed higher levels of genetic diversity ( $\pi = 0.2174$ ) than *O. linearis* ( $\pi = 0.1902$ ). However, there was a low level of population differentiation between these species ( $F_{st} = 0.0471$ ). The present study provides novel insights into the phylogenetic relationships and genetic diversity of water dropwort.

## Supporting information

**S1 Table. 158 accessions of water dropwort germplasm set: Origins, groups, types, and species.**

(XLSX)

**S2 Table. Phenotypic traits of 158 accessions of water dropwort germplasm set.**

(XLSX)

**S3 Table. Summary statistics of RAD sequencing data.**

(XLSX)

**S4 Table. SNPs developed in the present study.**

(TXT)

**S5 Table. Summary SNP statistics.**

(XLS)

**S6 Table. Groups classified using population structure analyses based on 10 different SNP subsamples and total SNP set.**

(XLSX)

**S1 Fig. Population structure of 50 *O. linearis* accessions generated by ADMIXTURE.**

(TIF)

**S2 Fig. Population structure of 108 *O. javanica* accessions generated by ADMIXTURE.**

(TIF)

## Author Contributions

**Conceptualization:** Qun Ji, Xinfang Huang, Weidong Ke.

**Data curation:** Qun Ji, Xinfang Huang, Weidong Ke.

**Formal analysis:** Qun Ji, Kai Zhou.

**Funding acquisition:** Qun Ji, Honglian Zhu.

**Investigation:** Qun Ji, Honglian Zhu, Xinfang Huang.

**Methodology:** Qun Ji, Zhengwei Liu.

**Project administration:** Weidong Ke.

**Resources:** Honglian Zhu, Kai Zhou, Yalin Sun.

**Software:** Zhixin Wang.

**Supervision:** Weidong Ke.

**Validation:** Qun Ji.

**Visualization:** Qun Ji, Kai Zhou, Yalin Sun.

**Writing – original draft:** Qun Ji.

**Writing – review & editing:** Zhengwei Liu, Zhixin Wang.

## References

1. Fu FT, Watson MF. *Oenanthe* L. In: China Flora Editorial Board of CAS, editor. Flora of China. Beijing and St. Louis: Science Press and Missouri Botanical Garden Press; 2005. pp. 130–132.
2. Li BQ. Water dropwort. In: Li SX, Li XD, Jiang XM, Liu PY, Lu ZH, Zhu MK, et al. editors. Vegetables in Encyclopedia of Chinese Agriculture. Beijing: Agriculture press; 1990. pp.258–259.
3. Zhao YW. Water dropwort cultivation. In: Institute of Vegetables and Flowers, Chinese Academy of Agricultural Sciences, editors. Olericulture in China. 2nd ed. Beijing: China Agriculture Press; 2009. pp.817–821.
4. Kongkachuichai R, Charoensiri R, Yakoh K, Kringkasemsee A, Insung P. Nutrients value and antioxidant content of indigenous vegetables from Southern Thailand. Food Chem. 2015; 173: 838–846. <https://doi.org/10.1016/j.foodchem.2014.10.123> PMID: 25466097
5. Kim TH, Ku SK, Bae JS. Anti-inflammatory activities of isorhamnetin-3-O-galactoside against HMGB1-induced inflammatory responses in both HUVECs and CLP-induced septic mice. J Cell Biochem. 2013; 114(2): 336–345. <https://doi.org/10.1002/jcb.24361> PMID: 22930571
6. Ku SK, Kim TH, Lee S, Kim SM, Bae JS, Bae JS. Antithrombotic and profibrinolytic activities of isorhamnetin-3-O-galactoside and hyperoside. Food Chem Toxicol. 2013; 53:197–204 <https://doi.org/10.1016/j.fct.2012.11.040> PMID: 23220618
7. Lee JY, Kim MY, Shin SH, Shin MR, Kwon OJ, Kim TH, et al. Persicarin isolated from *Oenanthe javanica* protects against diabetes-induced oxidative stress and inflammation in the liver of streptozotocin-induced type 1 diabetic mice. Exp Ther Med. 2017; 13(4): 1194–1202. <https://doi.org/10.3892/etm.2017.4113> PMID: 28413457
8. China Flora Editorial Board of CAS. Flora of China. Beijing: Science Press; 1985.
9. Zhou J, Peng H, Downie SR, Liu ZW, Gong X. A molecular phylogeny of Chinese Apiaceae subfamily Apioideae inferred from nuclear ribosomal DNA internal transcribed spacer sequences. Taxon. 2008; 57(2): 402–416.
10. Zhou J, Gong X, Downie SR, Peng H. Towards a more robust molecular phylogeny of Chinese Apiaceae subfamily Apioideae: Additional evidence from nrDNA ITS and cpDNA intron (rpl16 and rps16) sequences. Mol Phylogenet Evol. 2009; 53(1): 56–68. <https://doi.org/10.1016/j.ympev.2009.05.029> PMID: 19501179
11. Downie SR, KatzDownie DS, Sun FS, Lee CLS. Phylogeny and biogeography of Apiaceae tribe Oenantheae inferred from nuclear rDNA ITS and cpDNA psbI-5' trnK (UUU) sequences, with emphasis on the North American Endemics clade. Botany. 2008; 86(9): 1039–1064.
12. Spalik K, Downie SR, Watson MF. Generic delimitations within the Sium alliance (Apiaceae tribe Oenantheae) inferred from cpDNA rps16-5' trnK (UUU) and nrDNA ITS sequences. Taxon. 2009; 58(3): 735–748.

13. Fu S, Li LN, Long ZC, Ke WD, Ye AH, Guo YH, et al. Evaluation of the taxonomic status of water dropwort (*Oenanthe*, Apiaceae) accessions from East Asia based on nuclear rDNA internal transcribed spacer sequences. *Genet Mol Res*. 2016; 15(2): <https://doi.org/10.4238/gmr.15027363> PMID: 27173234
14. Zhang Z, Dong H, Yuan M, Yu Y. The complete chloroplast genome of *Oenanthe javanica*. *Mitochondrial DNA Part B*. 2020; 5(3):3169–3171. <https://doi.org/10.1080/23802359.2020.1806128> PMID: 33458091
15. Huh MK, Choi JS, Moon SG, Huh HW. Genetic diversity of natural and cultivated populations of *Oenanthe javanica* in Korea. *J Plant Biol*. 2002; 45(2): 83–89.
16. Zhao SH. Analysis on relationships of *Oenanthe* germplasm resource. Thesis, Yangzhou University. 2010.
17. Ye YY, Huang XF, Liu YM, Peng J, Ke WD. Comprehensive evaluation of water dropwort (*Oenanthe* spp.) germplasm resources in China. *China vegetables*. 2007;(supplementary issue):21–25.
18. Favrebac L, Gode C, Arnaud JF. Characterization of polymorphic microsatellite markers for the fine-leaved water-Dropwort *Oenanthe aquatica* and the Gypsywort *Lycopus europaeus*, two farmland remnant wetland species. *Conserv Genet Resour*. 2014; 6(4): 995–998.
19. Favrebac L, Mony C, Ernout A, Burel F, Arnaud J. Ditch network sustains functional connectivity and influences patterns of gene flow in an intensive agricultural landscape. *Heredity*. 2016; 116(2): 200–212. <https://doi.org/10.1038/hdy.2015.90> PMID: 26486611
20. Wu DZ, Liang Z, Yan T, Xu Y, Xuan LJ, Tang J, et al. Whole-genome resequencing of a worldwide collection of rapeseed accessions reveals the genetic basis of ecotype divergence. *Mol Plant*. 2019; 12(1): 30–43. <https://doi.org/10.1016/j.molp.2018.11.007> PMID: 30472326
21. Bekele WA, Wight CP, Chao S, Howarth C, Tinker NA. Haplotype-based genotyping-by-sequencing in oat genome research. *Plant Biotechnol J*. 2018; 16(8): 1452–1463. <https://doi.org/10.1111/pbi.12888> PMID: 29345800
22. Su WJ, Wang LJ, Lei J, Chai SS, Liu Y, Yang YY, et al. Genome-wide assessment of population structure and genetic diversity and development of a core germplasm set for sweet potato based on specific length amplified fragment (SLAF) sequencing. *Plos One*. 2017; 12(2): e0172066. <https://doi.org/10.1371/journal.pone.0172066> PMID: 28187178
23. Zhou WB, Ji X, Obata S, Pais A, Dong YB, Peet RK, et al. Resolving relationships and phylogeographic history of the *Nyssa sylvatica* complex using data from RAD-seq and species distribution modeling. *Mol Phylogenet Evol*. 2018; 126: 1–16. <https://doi.org/10.1016/j.ympev.2018.04.001> PMID: 29631052
24. Zhang F, Kang JM, Long RC, Yu LX, Wang Z, Zhao ZX, et al. High-density linkage map construction and mapping QTL for yield and yield components in autotetraploid alfalfa using RAD-seq. *BMC Plant Biol*. 2019; 19(1): 1–12.
25. Gao Y, Yin S, Wu LF, Dai DQ, Wang HB, Liu C, et al. Genetic diversity and structure of wild and cultivated *Amorphophallus paeoniifolius* populations in southwestern China as revealed by RAD-seq. *Sci Rep*. 2017; 7(1): 1–10.
26. Sun J, Ma DR, Tang L, Zhao MH, Zhang GC, Wang WJ, et al. Population Genomic Analysis and De Novo Assembly Reveal the Origin of Weedy Rice as an Evolutionary Game. *Mol Plant*. 2019; 12(5):632–647. <https://doi.org/10.1016/j.molp.2019.01.019> PMID: 30710646
27. Huang XH, Kurata N, Wei XH, Wang ZX, Wang AH, Zhao Q, et al. A map of rice genome variation reveals the origin of cultivated rice. *Nature*. 2012; 490:497–501. <https://doi.org/10.1038/nature11532> PMID: 23034647
28. Tao YF, Zhao XR, Wang XM, Hathorn A, Hunt CH, Cruickshank AW, et al. Large-scale GWAS in sorghum reveals common genetic control of grain size among cereals. *Plant Biotechnol J*. 2020; 18(4):1093–1105. <https://doi.org/10.1111/pbi.13284> PMID: 31659829
29. Chong XR, Zhang F, Wu YY, Yang XD, Zhao N, Wang HB, et al. A SNP-enabled assessment of genetic diversity, evolutionary relationships and the identification of candidate genes in chrysanthemum. *Genome Biol Evol*. 2017; 8(12):3661–3671.
30. Takagi H, Tamiru M, Abe A, Yoshida K, Uemura A, Yaegashi H, et al. MutMap accelerates breeding of a salt-tolerant rice cultivar. *Nat Biotechnol*. 2015; 33(5):445–449. <https://doi.org/10.1038/nbt.3188> PMID: 25798936
31. Bacher J, Wenzig K, Vogler M. SPSS TwoStep Cluster—a first evaluation. 2nd ed. 2004.
32. Baird NA, Etter PD, Atwood TS, Currey M, Shiver AL, Lewis ZA, et al. Rapid SNP discovery and genetic mapping using sequenced RAD markers. *Plos One*. 2008; 3(10): <https://doi.org/10.1371/journal.pone.0003376> PMID: 18852878
33. Catchen JM, Amores A, Hohenlohe PA, Cresko WA, Postlethwait JH. Stacks: building and genotyping loci de novo from short-read sequences. *G3-Genes Genom Genet*. 2011; 1(3), 171–182. <https://doi.org/10.1534/g3.111.000240> PMID: 22384329

34. Tamura K, Peterson DS, Peterson N, Stecher G, Nei M, Kumar S. MEGA5: molecular evolutionary genetics analysis using maximum likelihood, evolutionary distance, and maximum parsimony methods. *Mol Biol Evol.* 2011; 28(10):2731–2739. <https://doi.org/10.1093/molbev/msr121> PMID: 21546353
35. Alexander D, Novembre J, Lange K. Fast model-based estimation of ancestry in unrelated individuals. *Genome Res.* 2009; 19(9):1655–1664. <https://doi.org/10.1101/gr.094052.109> PMID: 19648217
36. de Hoon MJL, Imoto S, Nolan J, Miyano S. Open source clustering software. *Bioinformatics.* 2004; 20(9):1453–1454. <https://doi.org/10.1093/bioinformatics/bth078> PMID: 14871861
37. Catchen J, Hohenlohe PA, Bassham S, Amores A, Cresko WA. Stacks: an analysis tool set for population genomics. *Mol Ecol.* 2013; 22:3124–3140. <https://doi.org/10.1111/mec.12354> PMID: 23701397
38. Granato ISC, Galli G, Giselly E, Couto DO, Souza MBE, Mendonca LF, et al. SnpReady: a tool to assist breeders in genomic analysis. *Mol Breeding.* 2018; 38(102): <https://doi.org/10.1007/s11032-018-0844-8>.
39. Pembleton LW, Cogan NOI, Forster JW. StAMPP: an R package for calculation of genetic differentiation and structure of mixed-ploidy level populations. *Mol Ecol Resour.* 2013; 13(5):946–952. <https://doi.org/10.1111/1755-0998.12129> PMID: 23738873
40. Edwards SV. Phylogenomic subsampling: A brief review. *Zool Scr.* 2016; 45(S1): 63–74.
41. Chen SF, Zhou YQ, Chen YR, Gu J. fastp: an ultra-fast all-in-one FASTQ preprocessor. *Bioinformatics.* 2018; 34(17):i884–i890. <https://doi.org/10.1093/bioinformatics/bty560> PMID: 30423086
42. Ma BQ, Liao L, Peng Q, Fang T, Zhou H, Korban SS, et al. Reduced representation genome sequencing reveals patterns of genetic diversity and selection in apple. *J Integr Plant Biol.* 2017; 59(3):190–204. <https://doi.org/10.1111/jipb.12522> PMID: 28093854