

RESEARCH ARTICLE

Compensatory selection for roads over natural linear features by wolves in northern Ontario: Implications for caribou conservation

Erica J. Newton^{1*}, Brent R. Patterson¹, Morgan L. Anderson², Arthur R. Rodgers³, Lucas M. Vander Vennen⁴, John M. Fryxell²

1 Ontario Ministry of Natural Resources and Forestry, Wildlife Research and Monitoring Section, Trent University, DNA Building, Peterborough, ON, Canada, **2** Department of Integrative Biology, University of Guelph, Guelph, ON, Canada, **3** Ontario Ministry of Natural Resources and Forestry, Centre for Northern Forest Ecosystem Research, Thunder Bay, ON, Canada, **4** Alberta Environment and Parks, Peace River, AB, Canada

* erica.newton@ontario.ca



OPEN ACCESS

Citation: Newton EJ, Patterson BR, Anderson ML, Rodgers AR, Vander Vennen LM, Fryxell JM (2017) Compensatory selection for roads over natural linear features by wolves in northern Ontario: Implications for caribou conservation. PLoS ONE 12(11): e0186525. <https://doi.org/10.1371/journal.pone.0186525>

Editor: Elissa Z. Cameron, University of Tasmania, AUSTRALIA

Received: February 15, 2017

Accepted: October 3, 2017

Published: November 8, 2017

Copyright: © 2017 Newton et al. This is an open access article distributed under the terms of the [Creative Commons Attribution License](https://creativecommons.org/licenses/by/4.0/), which permits unrestricted use, distribution, and reproduction in any medium, provided the original author and source are credited.

Data Availability Statement: Data are available from the Dryad Digital Repository [<http://dx.doi.org/10.5061/dryad.t5800>].

Funding: Financial support was provided by the Forest Ecosystem Science Co-operative Inc., Natural Sciences and Engineering Research Council of Canada Collaborative Research and Development Grants program (CRDPJ 394902–09), Canadian Forest Service, and the Wildlife Research and Monitoring Section and the Centre

Abstract

Woodland caribou (*Rangifer tarandus caribou*) in Ontario are a threatened species that have experienced a substantial retraction of their historic range. Part of their decline has been attributed to increasing densities of anthropogenic linear features such as trails, roads, railways, and hydro lines. These features have been shown to increase the search efficiency and kill rate of wolves. However, it is unclear whether selection for anthropogenic linear features is additive or compensatory to selection for natural (water) linear features which may also be used for travel. We studied the selection of water and anthropogenic linear features by 52 resident wolves (*Canis lupus x lycaon*) over four years across three study areas in northern Ontario that varied in degrees of forestry activity and human disturbance. We used Euclidean distance-based resource selection functions (mixed-effects logistic regression) at the seasonal range scale with random coefficients for distance to water linear features, primary/secondary roads/railways, and hydro lines, and tertiary roads to estimate the strength of selection for each linear feature and for several habitat types, while accounting for availability of each feature. Next, we investigated the trade-off between selection for anthropogenic and water linear features. Wolves selected both anthropogenic and water linear features; selection for anthropogenic features was stronger than for water during the rendezvous season. Selection for anthropogenic linear features increased with increasing density of these features on the landscape, while selection for natural linear features declined, indicating compensatory selection of anthropogenic linear features. These results have implications for woodland caribou conservation. Prey encounter rates between wolves and caribou seem to be strongly influenced by increasing linear feature densities. This behavioral mechanism—a compensatory functional response to anthropogenic linear feature density resulting in decreased use of natural travel corridors—has negative consequences for the viability of woodland caribou.

for Northern Forest Ecosystem Research of the Ontario Ministry of Natural Resources and Forestry. Several of the primary investigators involved in this study worked for organizations providing funding. The funders had no role in study design, data collection and analysis, decision to publish, or preparation of the manuscript.

Competing interests: This work was supported in part by the Forest Ecosystem Science Co-operative Inc. This does not alter our adherence to PLOS ONE policies on sharing data and materials.

Introduction

As ecosystems face increasing levels of human-mediated fragmentation and development, interspecies dynamics may also shift [1, 2]. Quantifying the net effects of these changes is important because some species may benefit while others suffer [3–5], potentially creating challenges for conservation [6–9]. In particular, understanding anthropogenic drivers of altered predator-prey relationships is important for making informed decisions regarding species conservation.

The wolf-caribou system of North America's boreal forest has been an area of particular focus in habitat selection studies [10–12] because woodland caribou (*Rangifer tarandus caribou*) are in decline in North America [13] and globally [14]. Regardless of the proximate agents, anthropogenic factors are often cited as the ultimate driver of these declines [15, 16]. One such mechanism relates to forestry activity that often converts old-growth habitat to early seral forests, which facilitates increases in populations of ungulates such as deer (*Odocoileus virginianus* [17]) and moose (*Alces alces* [18, 19]). Increased ungulate abundance can produce higher densities of predators like wolves, putting caribou at higher risk. Indeed apparent competition (*sensu* [20]) is thought to be the largest cause of declining caribou populations [21, 22].

Wolves (*Canis* sp.) select anthropogenic linear features [23–25], often in relation to their availability [10]. Anthropogenic linear features are associated with faster, more efficient travel [12, 25] and higher prey encounter rates [26–28]; faster moving wolves have been shown to have higher kill rates in Ontario [29]. If an ultimate goal is to characterize habitat selection while hunting, distinguishing between behaviors relating to searching for prey and other behavior (e.g., denning) is important. For coursing predators, "traveling" and "searching for prey" are considered synonymous [30], and traveling can be defined as those times when the predator is not resting or eating [27, 30].

Studies that compare selection of natural to anthropogenic linear features [31, 32] are rare, and the relationship between density of anthropogenic linear features and selection for natural versus anthropogenic linear features by wolves has not yet been described. Selection for linear features is often season-dependent. For example, in the snow-free season—when most caribou mortalities occur in Alberta [33]—industrial linear features were selected for travel by wolves in Alberta, but were not as important during the winter; natural linear features such as waterways were an important feature for wolf movement during all seasons [31]. In Ontario's boreal forest, wolf selection for waterways was more important in an area with lower road density, but seasonal changes in selection were not examined [32].

Our primary focus was to investigate selection by wolves (*Canis lupus x lycaon*) for anthropogenic linear features relative to natural linear features such as lake and river edges or frozen streams and waterways using resource selection functions (RSFs [34]). RSFs are frequently used to understand interspecies relationships and habitat use [17, 35, 36]. In a heterogeneous landscape, selection may differ depending on the availability of a given habitat type (i.e., a functional response [10]). The magnitude of variation within this functional response should therefore be proportional to the heterogeneity of the landscape, demanding study at large spatial scales encompassing the full complement of available habitat types.

Previously, the functional response has been studied for *Canis* sp. by comparing selection for anthropogenic linear features among seasons, at different times of day, at different elevations, or to variable levels of prey density [10, 26, 27]. Comparing selection for anthropogenic vs natural linear features is important, because wolves move faster on anthropogenic linear features relative to forested habitats [25, 37], but movement rates on natural linear features in forested habitats have not been quantified. For much of the year velocities on natural linear

features are likely less than when on anthropogenic linear features, due to differences in terrain and snow sinking depths [38]. A compensatory relationship between selection for anthropogenic over natural linear features would indicate that wolves switch from using natural to anthropogenic linear features, which may influence prey encounter rates. Industrial development in Ontario is expected to increase [13, 39], and therefore increased knowledge of mechanisms driving wolf habitat selection and interactions with prey in natural and human-modified landscapes is critical to inform conservation efforts for Ontario woodland caribou, which were designated threatened in 2000 [13].

We studied selection for habitat features and the functional response to natural and anthropogenic linear features using telemetry data from 52 wolves in a large geographic area of northern Ontario representing both pristine and human-altered forests. Our objectives were to first establish that wolves in Ontario select linear features and then to determine if selection of anthropogenic linear features was stronger than selection for natural linear features. Anthropogenic linear features such as primary and secondary roads have fewer obstacles, and therefore obstruct movement less, than natural waterways; also, they are generally less tortuous than waterways. Therefore, we predicted that there would be stronger selection and a stronger functional response to anthropogenic linear features compared with natural linear features, particularly in the snow-free season. We predicted that in the winter, selection for all linear features would be similar, because snow could help or hinder travel similarly on roads and waterways. Finally, we determined if use of anthropogenic linear features throughout the landscape was additive or compensatory by comparing availability of anthropogenic linear features with selection for natural and anthropogenic linear features; this could have important implications for management and land use planning. Additive selection in this context would manifest as wolf selection for anthropogenic linear features being unrelated, and in addition to, selection for natural linear features. Compensatory selection of anthropogenic linear features would result in an inverse relationship between selection for anthropogenic linear features and water linear features as anthropogenic linear feature density increases.

Methods

Study area

We studied wolves in three areas totalling 68 000 km² in northern Ontario, ranging in elevation from 200–500 m above sea level and comprising a heterogeneous mosaic of pristine and disturbed forest, provincial parks and protected areas, roads, railways, hydro lines, lakes, rivers, streams and wetlands, 2010–2014 (Fig 1). The Pickle Lake study area (90°34'W, 51°37'N, 28 000 km²) was located in eastern Cat Lake Ecoregion and south central Big Trout Lake Ecoregion; the Nakina study area (87°32'W, 50°27'N, 24 000 km²) straddles the border between the Lake Nipigon and Big Trout Lake Ecoregions; and the Cochrane study area (80°47'W, 49°58'N, 16 000 km²) is located north and east in the Lake Abitibi Ecoregion [40]. Human disturbance was minimal in Pickle Lake, most extensive in Nakina, and intermediate in Cochrane. Common tree species in the study area were black spruce (*Picea mariana*), balsam fir (*Abies balsamea*), white spruce (*P. glauca*), tamarack (*Larix laricina*), jack pine (*Pinus banksiana*), white birch (*Betula papyrifera*), and trembling aspen (*Populus tremuloides*); forest stands were a mosaic of coniferous, mixed-woods, and deciduous. January average daily temperatures were -18.6°C and July average daily temperatures were 17.2°C in centrally located Geraldton; mean annual precipitation was 765 mm. In the study area wolves could be hunted or trapped legally 15 Sept–31 March (Fish and Wildlife Conservation Act, 1997). Hunters could take two wolves per season whereas there was no bag limit for trappers trapping on their respective registered trap lines [41]. In the study area, wolves mainly preyed on moose (*Alces alces*), beaver

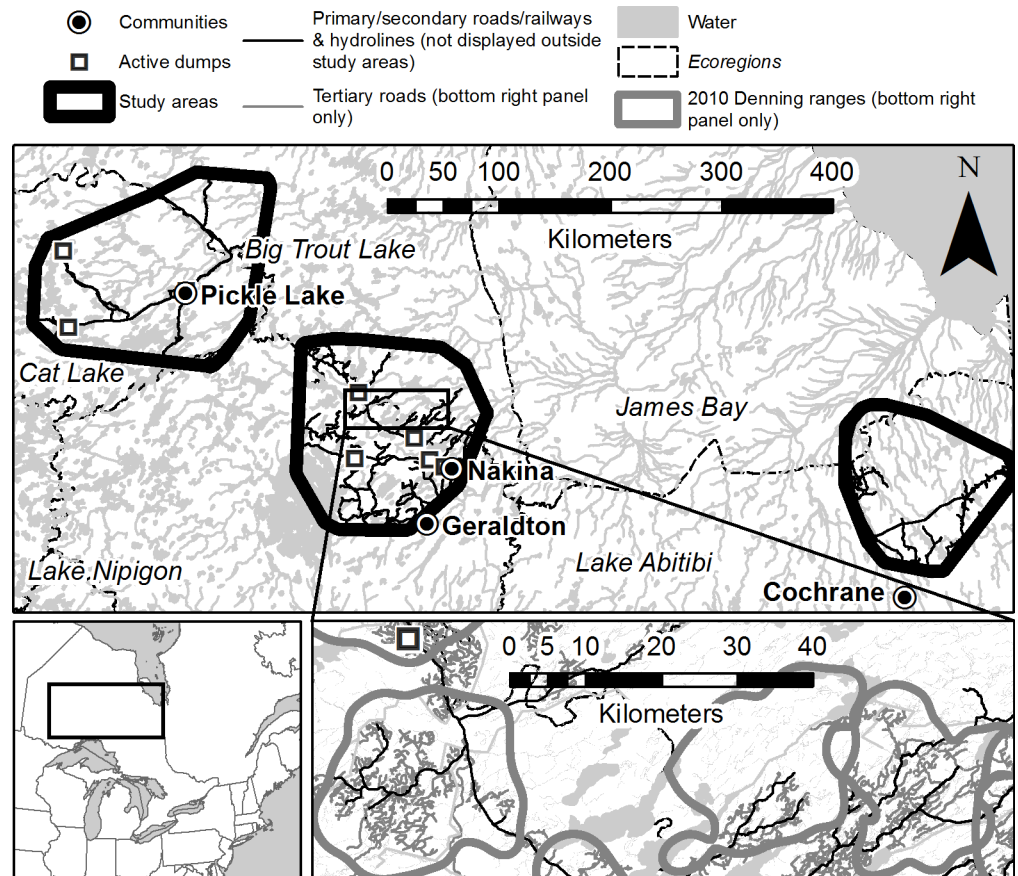


Fig 1. Study areas near Pickle Lake, Nakina, and Cochrane in northern Ontario, Canada, displaying relative size of a sample of seasonal ranges and distribution of linear features within. Study area in top panel and denning ranges in 2010 in bottom right panel. Map data provided by Natural Resources Canada under the federal Open Government Licence—Canada (<http://open.canada.ca/en/open-government-licence-canada>) and by Ontario Ministry of Natural Resources and Forestry under the Open Government Licence—Ontario (<https://www.ontario.ca/page/open-government-licence-ontario>).

<https://doi.org/10.1371/journal.pone.0186525.g001>

(*Castor canadensis*) and hare (*Lepus americanus*); more rarely, woodland caribou (*Rangifer tarandus*) were preyed upon [42]. Other predators in this system were black bears (*Ursus americanus*), wolverine (*Gulo gulo*) and Canada lynx (*Lynx canadensis*).

Wolf capture, telemetry, seasons and ranges

Between 31 January 2010 and 30 September 2013, we captured 65 wolves using padded leg-hold traps (#7 EZ grip, Livestock Protection Co., Alpine, Texas) or helicopter net-gunning (Bighorn Helicopters, Cranbrook, BC) and fit wolves with GPS-Argos collars (Lotek 7000MA, 7000SAW, Lotek Inc, Newmarket, Ontario) under Ontario Ministry of Natural Resources animal care permits 10/11/12-218. Mean pack size was larger in Nakina (4.4, range 2–14) than in Pickle Lake (3.7, range 2–7) or Cochrane (3.7, range 2–7). Helicopter-captured wolves were physically restrained for collaring, otherwise, wolves were immobilized using an intramuscular injection of mixed xylazine hydrochloride (2 mg/kg) and Telazol (4m mg/kg); antagonists were either yohimbine (0.15 mg/kg) or atipamezole (0.2 mg/kg). Collars recorded a location every 2.5 or 5 hours depending on the wolf and season; if fix interval changed within a season, we used only locations obtained every 5 hours.

We analyzed wolf selection of linear features during three seasons based on multiple factors: seasonal changes in wolf behaviour and movements observed during our study and other similar studies [43–45], inflection points in tortuosity and velocity of resident wolves in our study area (S1 Fig), and known dates of snow accumulation (e.g., [46]; Environment Canada Climate Normals 1981–2010 data showed that snow cover is > 20 cm per month, November to April). Resulting seasons were denning (1 May–July 31), rendezvous (1 August–31 October), and winter (1 November–30 April). Wolves that had < 50 days of data collection in the first two seasons and < 70 days in winter were excluded from further analysis.

We used R Version 3.0.2 [47] and the Geospatial Modeling Environment Version 0.7.2.1 (Spatial Ecology, 2014) to create 95% seasonal ranges for resident wolves using fixed-kernels and the rule-based *ad hoc* method [48], where increasing proportions of h_{ref} were tested until a contiguous range with no internal lacuna formed. Forays lasting < 2 weeks outside established clusters of relocations were removed prior to range creation, as these forays caused the bandwidths calculated using the *ad hoc* method to be unacceptably large. Transient wolves were identified and omitted from all analyses based on a lack of 1) known association with other wolves, and 2) a home range area-curve with no asymptote when 1 random fix per day was examined using the software ABODE V.2-7 [49]. To avoid pseudoreplication, in the rare case when more than one wolf was collared in the same pack during the same season, we analyzed data only from the wolf with the longest active collar duration over that season; data from the other wolf were excluded from the analysis.

Linear features

We considered roads, hydro lines, railways and water linear features as possible travel corridors for wolves. As vehicular traffic on all anthropogenic linear features was minimal, these features were divided into two categories. The primary/secondary roads/railways and hydro lines category included paved roads, primary and secondary gravel roads driveable with a truck, railways and hydro lines, derived using GIS map layers provided by the Centre for Northern Forest Ecosystem Research (CNFER, Ontario Ministry of Natural Resources and Forestry). These features often overlapped in space or were scarce and it was therefore inappropriate to separate them further. The tertiary roads category included lower-use or grown-over gravel roads and trails (CNFER). Water linear features in the study area were identified using 30 x 30 m resolution data from the Ontario Hydro Network. We removed small water bodies separated by > 100 m from other water and < 500 m in length as they likely did not function as travel corridors for wolves. In all seasons water linear features were defined as waterlines and shorelines; in the winter season virtual lines connecting hydrologic inflow and outflow through centres of lakes and rivers also functioned as linear features to account for wolves crossing large frozen waterbodies. Water lines with very small drainage areas that likely did not represent wolf travel corridors were removed: we used the Flow Accumulation and Stream Grid layers of the Ontario Integrated Hydrology Data (Spatial Data Infrastructure Unit, Ontario Ministry of Natural Resources) and ArcGIS 10.1 to prune the stream network where drainage area was less than 150 cells (i.e. < 0.14 km²); 94.7% of the cells representing water lines were retained.

Habitat

Habitat covariates included in RSF models were derived from the Far North Land Cover map products Version 1.3.1 [50]. The original landcover classes were reduced to eight classes to increase accuracy [51] and reduce number of model parameters. The reduced classes were lowland (freshwater marsh, thicket swamp, treed peatland, open fen, treed fen, open bog, treed

bog, and deciduous swamp, 37% of the total area), sparse/barren, (sparse treed, bedrock, 3%), deciduous/mixed forest (deciduous treed and mixed treed, 8%), old disturbance (\leq year 2000 natural disturbance; e.g., burn, pest or disease, unknown disturbance, and unknown disturbance with age unknown, 6%), recent disturbance ($>$ year 2000 natural disturbance, 2%), old cuts (\leq year 2000 forest cuts, 3%) and recent cuts ($>$ year 2000 forest cuts, 4%). Lowland and new disturbance are used proportionally less than their availability by wolves in this study area [52, 53], whereas old disturbance is selected, both in Ontario and elsewhere in North America [10, 32, 52]. Wolves also typically select areas preferred by moose and also areas with higher moose density, such as deciduous/mixed forests and cuts; coniferous forests may be selected or avoided by moose, depending on the season and density of cover [10, 32, 52–54]. To account for wolves selecting areas preferred by moose, we included both old and new cuts, as the age of a cut block influences moose selection [55]. We included sparse/barren areas in the models as these areas may be selected differentially in summer and winter by wolves [10], and because wolves may use large rocks for denning and rendezvous sites [56], which could affect selection coefficients. The remainder of the study area was made up of water linear features (6%) and anthropogenic linear features (2%); other classes with minimal coverage were not included in the analysis. Habitat density, including density of linear features, was calculated as the number of habitat feature pixels (1 pixel = 30 x 30 m) divided by the total number of pixels in each seasonal range. Disturbance and cut classes reflect the year the majority of telemetry data were collected (2010); less than 0.2% of the study area was converted to recent cuts between 2010 and 2012, so we used 2010 data for all years. The area had little topographical relief and we did not include elevation in our models.

Statistical analyses

We conducted a Euclidean distance-based [57, 58] RSF at the home-range scale, also known as Johnson's [59] third order selection to compare locations used by wolves to locations available within their seasonal ranges. This approach measures the distance from each location to the nearest habitat feature of each type. For brevity, we use the term "selection" for a habitat feature to indicate that wolves selected areas closer to that feature than what was randomly available on the landscape. We chose a generalized linear mixed-model approach over a movement-based model of availability because it is more appropriate for resource selection studies at larger spatial scales [60]. We wished to analyze data from traveling wolves only. To reduce spatial autocorrelation and to filter out most non-traveling locations when wolves were resting or eating at kill, den, rendezvous and bedding sites, we removed locations at known feeding sites (within 1 km of dumps) and excluded locations with velocity to previous or next location $<$ 50 m/hr; this filter was more conservative than that used to define traveling in Whittington et al. [27], but less conservative than that used in Dickie et al. [25], especially considering our 5-hour fix interval.

To ensure that available points accurately represented available habitat [57], we randomly selected two seasonal ranges from each study area (six total) and overlaid between 0.2–10 random points/km² throughout the ranges; random points were chosen from a uniform distribution. We followed Obbard et al. [61] to determine the random point density at which the distance to features stabilized at the representative seasonal ranges. The median distance to features stabilized at 4 points/km²; therefore, we selected this point density for further analysis. The mean ratio of used to available locations was 1:14.3 (S1 Table). To ensure that used and available points were sampled from the same area, we removed any wolf locations that occurred outside of their respective 95% seasonal range.

Territorial behaviour generally prevents resident wolves from accessing features inside another wolf's range [62–65]. All used and available locations were within the wolf's seasonal

range. However, because selection could reflect knowledge of features occurring just outside the wolf's seasonal range, we measured distance to features within an area representing the seasonal range buffered by 7 km. This buffer size represented the 75th percentile of the maximum distance resident wolves were found outside their 95% seasonal range boundary before filtering extra-territorial locations.

From each used or available location, we measured distance in km to the nearest linear feature and habitat type. These measurements were standardized before inclusion in the RSF models by subtracting the season and feature-wise median [27] and dividing by 1.5 x the interquartile range. This is the non-parametric equivalent to subtracting the mean and dividing by two standard deviations, a practice recommended to improve model performance and facilitate comparison among variables that differ in magnitude [66, 67].

Some habitat classes or linear features did not occur in all seasonal ranges. We compared two approaches to deal with this issue, and ran the full analysis, described below, for each method. The "Maximum Distance" method assigns the measured distances between observed or random locations and features missing from a given territory the value corresponding to the greatest distance between a wolf location and the feature within the overall dataset [43]. The "Functional Availability" method, proposed here, includes an interaction term (1 or 0) in both fixed and random effects to indicate whether each habitat variable was available (or unavailable, respectively) to the wolf. Because we found the Functional Availability method to be analytically superior, with similar results, we present results only for that method in the main body of the text. [S1 File](#) includes further details and results for the Maximum Distance method for purposes of comparison. Some features that were technically available according to the above criteria were very scarce within individual territories; accordingly, we only considered a feature "available" if it occurred within the seasonal range and the density was greater than 1% for land cover features and greater than 0.1% for anthropogenic linear features.

We estimated a mixed-effects logistic regression model for each season using a hierarchical model selection approach e.g., [68–70]. Although we could have calculated individual models for each wolf, year, and season [60], using mixed effects models allowed us to account for differences in sample size and availability of each habitat type when calculating population and individual-level selection coefficients, while also accounting for correlation due to some individuals being measured over several years [10, 11, 71]. First, to test for multicollinearity we investigated Pearson correlation coefficients (r) and variance inflation factors (VIF) using SAS PROC REG for each season using the global fixed effects structure and no random effects. We removed or modified independent variables such that in any given model $r < 0.70$ and $VIF < 3$ for all factors [70, 72]. Next, we tested a set of models (listed in [Table 1](#)), each containing all possible fixed-effects covariates (global fixed effects), but with varying random effects: we tested among models with no random effects, models with random intercepts for wolf and year, and models with random intercepts and random coefficients (slopes) for water linear features, primary/secondary roads/railways and hydro lines, and tertiary roads and combinations therein ([Table 1](#)). We selected the optimal random effects structure using the Akaike information criterion (AIC). We also included results for the Bayesian information criterion (BIC), because AIC may select overly complex models when sample sizes are high [73, 74]. Random intercepts account for unbalanced sample sizes across animals and years; random coefficients model individual-level patterns in selection by allowing the slope of the logistic regression to vary for each feature (when specified), individual and year [11, 71, 75, 76]. Finally, we retained the random effects structure in the most highly supported model, then tested among a number of fixed-effects structures ([Table 2](#)), again including results for both BIC and AIC. To account for any remaining autocorrelation among telemetry locations we specified an empirical (sandwich) estimator. We used five-point adaptive Gauss-Hermite quadrature [11, 77] to obtain

Table 1. Candidate model set with varying random effects structures and global fixed effects structure* for three seasons, describing selection of landscape variables by wolves in northern Ontario, Canada, 2010–2014.

Random effects	AIC [†]	BIC [†]	ROC [†]	ΔAIC [†]	w _i [†]
Denning					
water + primary/secondary roads/railways & hydro lines × A + tertiary roads × A Wolf ID / Year	53686.13	53713.55	0.7392	0.00	1
water + primary/secondary roads/railways & hydro lines × A Wolf ID / Year	53914.60	53940.30	0.7338	228.47	0
water + tertiary roads × A Wolf ID / Year	53939.92	53965.63	0.7338	253.79	0
primary/secondary roads/railways & hydro lines × A + tertiary roads × A Wolf ID / Year	54183.25	54208.95	0.7288	497.12	0
water Wolf ID / Year	54223.88	54247.87	0.7278	537.75	0
primary/secondary roads/railways & hydro lines × A Wolf ID / Year	54418.82	54442.81	0.7230	732.69	0
tertiary roads × A Wolf ID / Year	54433.13	54457.12	0.7225	747.00	0
Intercept = 1 Wolf ID / Year	54732.43	54754.71	0.7144	1046.30	0
no random effects	56133.68	56250.25	0.6843	2447.55	0
Rendezvous					
water + anthropogenic linear features × A Wolf ID / Year	54339.11	54360.73	0.7831	0.00	1
water Wolf ID / Year	55159.32	55179.28	0.7662	820.21	0
anthropogenic linear features × A wolf ID / year	55309.57	55329.53	0.7666	970.46	0
1 wolf ID / year	56150.30	56168.60	0.7485	1811.19	0
no random effects	57688.79	57785.92	0.7266	3349.68	0
Winter					
water + anthropogenic linear features × A wolf ID / year	72257.00	72280.48	0.7001	0.00	1
anthropogenic linear features × A wolf ID / year	72711.42	72733.10	0.6890	454.42	0
water wolf ID / year	72881.98	72903.66	0.6837	624.98	0
1 wolf ID / year	73347.99	73367.86	0.6728	1090.99	0
no random effects	74875.56	74975.90	0.6430	2618.56	0

"A" is a dummy variable coded 1 or 0 depending on whether the habitat class was available or unavailable, respectively, to the wolf.

*Fixed effects for the denning model were coniferous forest + sparse/barren + deciduous/mixed forest + lowland + recent disturbance × A + old disturbance + old cuts × A + recent cuts × A + water + primary/secondary roads/railways & hydro lines × A + tertiary roads × A. For the rendezvous and winter seasons, fixed effects were the same, except recent cuts were removed, and anthropogenic linear features replaced the variables tertiary roads and primary/secondary roads/railways & hydro lines.

†Column names are AIC = Akaike information criterion, BIC = Bayesian information criterion, AUC = area under the ROC curve, ΔAIC = delta AIC, w_i = AIC weight.

<https://doi.org/10.1371/journal.pone.0186525.t001>

more accurate parameter estimates, and data were processed by subjects (between-within degrees of freedom) using SAS PROC GLIMMIX (Version 9.3; SAS Institute, Cary, NC, USA). Restricted maximum likelihood estimates are not well defined for binomial GLMMs and therefore we used maximum likelihood in both steps of hierarchical model selection.

To determine if there was a functional response to linear features, we assessed the relationship between density of a linear feature within each wolf's territory and the selection coefficient (from the RSF models, outlined above) for linear feature types using linear mixed models with the function lmer in the "lmerTest" package in R [78] with wolf ID as a random effect to control for multiple years of measurement of the same wolf. We examined functional responses to both natural and anthropogenic linear feature density. Because our overall objective was to better understand how anthropogenic linear features may alter wolf movements, we were interested in determining whether the relationship between selection for anthropogenic linear features and natural linear features was additive or compensatory. We expected that if wolves used anthropogenic linear features independently of water linear features, indicating additive use, the selection for both feature categories would be unrelated or change in concert as density

Table 2. Candidate model set with varying fixed effects structures* and top-model selected random effects structures for three seasons, describing selection of landscape variables by wolves in northern Ontario, Canada, 2010–2014.

Random effects	Fixed effects	AIC [†]	BIC [†]	ROC [†]	ΔAIC [†]	w _i [†]
Denning						
water + primary/secondary roads/railways & hydro lines×A + tertiary roads×A wolf ID / year	global (habitat + cuts + disturbance + linear features)	53686.13	53713.55	0.7392	0	1
	habitat + disturbance + linear features	53725.56	53749.55	0.7384	39.43	0
	habitat + cuts + linear features	53749.93	53773.92	0.7383	63.80	0
	habitat + linear features	53778.79	53799.35	0.7378	92.66	0
	cuts + disturbance + linear features	53800.57	53821.13	0.7378	114.44	0
	disturbance + linear features	53833.84	53850.98	0.7371	147.71	0
	cuts + linear features	53862.65	53879.79	0.7369	176.52	0
Rendezvous						
water + anthropogenic linear features×A wolf ID / year	global (habitat + cuts + disturbance + linear features)	54339.11	54360.73	0.7831	0	1
	habitat + disturbance + linear features	54391.56	54411.52	0.7823	52.45	0
	habitat + cuts + linear features	54419.22	54437.52	0.7816	80.11	0
	habitat + linear features	54464.83	54481.47	0.7809	125.72	0
	cuts + disturbance + linear features	54808.32	54823.29	0.7771	469.21	0
	disturbance + linear features	54847.09	54860.40	0.7764	507.98	0
	cuts + linear features	54866.59	54878.23	0.7757	527.48	0
Winter						
water + anthropogenic linear features×A wolf ID / year	global (habitat + cuts + disturbance + linear features)	72257.00	72280.48	0.7001	0	0.852
	habitat + disturbance + linear features	72260.50	72282.18	0.7001	3.50	0.148
	habitat + cuts + linear features	72292.83	72312.71	0.6993	35.83	0
	habitat + linear features	72295.32	72313.39	0.6993	38.32	0
	cuts + disturbance + linear features	72686.74	72703.00	0.6921	429.74	0
	disturbance + linear features	72698.08	72712.54	0.6921	441.08	0
	cuts + linear features	72712.45	72725.10	0.6915	455.45	0

"A" is a dummy variable coded 1 or 0 depending on whether the habitat class was available or unavailable, respectively, to the wolf.

*The fixed effects categories are as follows: habitat (coniferous forest + sparse/barren + deciduous/mixed forest + lowland), cuts (denning = old cuts × A + recent cuts × A; winter and rendezvous = old cuts × A), disturbance (recent disturbance × A + old disturbance), and linear features (denning = water + primary/secondary roads/railways & hydro lines × A + tertiary roads × A; winter and rendezvous = water + all anthropogenic linear features × A).

†Column names are AIC = Akaike information criterion, BIC = Bayesian information criterion, AUC = area under the ROC curve, ΔAIC = delta AIC, w_i = AIC weight.

<https://doi.org/10.1371/journal.pone.0186525.t002>

of anthropogenic linear features increased. An inverse relationship between water and anthropogenic linear features as anthropogenic linear feature density increased would indicate compensatory use. We assessed functional response relationships when the marginal R²_{GLMM}, defined as the variance explained by the fixed effects [79], was > 0.1 [11] and when relationships were significantly different than zero (P < 0.05).

Data are available from the Dryad Digital Repository: [<http://dx.doi.org/10.5061/dryad.t5800>].

Results

After removing data from wolves that either had insufficient data or were in the same pack as another included animal, rarifying locations to a common fix interval per season, removing locations that were associated with very small extraterritorial movements and removing

locations that were associated with kills and bed sites, 23.1% of the location data remained, resulting in 26 387 locations available for analysis. A breakdown of the number of locations per wolf and season is provided in [S1 Table](#). Of the 52 wolves that were suitable for analysis, median active collar duration was 183 days (range 59–780 days), for a total of 35, 32, and 35 wolves studied for denning, rendezvous, and winter seasons, respectively. Some wolves were studied over multiple years, so sample sizes per year and season were 41, 38, and 44, respectively. Wolves in the same pack generally have similar selection coefficients so a larger number of wolves in disparate packs increases effective sample size [25, 26, 31, 80]. To reduce collinearity in the model sets during the rendezvous and winter seasons, we combined the variables primary/secondary roads/railways and hydro lines and tertiary roads into a new variable, anthropogenic linear features, and removed the variable recent cuts. These variables were not as highly correlated in the denning seasonal ranges (due to the location of these ranges throughout the study area); because we were interested in differences between types of anthropogenic linear features, we did not combine them for denning models. After these changes, for all fixed effects and seasons, VIF was < 1.92 and r was ≤ 0.662 .

Certain features were not available to some wolves throughout each season. Two to 15 wolves could not access anthropogenic linear features (anthropogenic linear features, tertiary roads, or primary/secondary roads/railways and hydro lines), depending on the season ([S2 Table](#)). Seven wolves did not have access to recent disturbance in their seasonal ranges, and 7 to 17 wolves did not have recent or old cuts in their seasonal ranges ([S2 Table](#)).

During the first step of model selection (choosing an appropriate random effects structure while holding fixed effects constant), in all three seasons, the top model was always the model with the most complex random effects structure ([Table 1](#)). The minimum AIC, BIC, and maximum ROC were consistent within the model set and all three criteria selected the same top models. During the second step of model selection (assessing best fixed effects after choosing the appropriate random effects structure), the most complex model was ranked first by the model selection procedure. In addition, the AIC, BIC, and ROC consistently selected the same top model—the model with global fixed effects structure: habitat variables, cuts, disturbance, and linear features ([Table 2](#)). Both IC methods favoured models that contained several non-significant predictor variables, even when we tried other combinations (not presented here) with only fixed effects that were significant in the top models.

Selection in a Euclidean distance analysis indicates that individuals selected areas that on average were closer to the feature of interest than would have been the case had they used the landscape randomly. Among the final top models for each season, the fixed effects most strongly selected for in each season were anthropogenic linear features and water ([Fig 2](#)). Indeed, selection for all linear features was readily apparent in the telemetry data used for analysis (e.g., [Fig 3](#)). Wolves weakly selected against lowland in all three seasons. Weak selection for other features varied by season: in the denning season, wolves selected recent disturbances, old cuts, and did not select coniferous forests. In the rendezvous season, wolves selected deciduous mixed forests but selected against coniferous forests. In winter, wolves selected recent disturbance and deciduous mixed forests. In the rendezvous season, anthropogenic features were selected more strongly than water, and selection for all linear features was stronger in the rendezvous season than in denning and winter. Covariances for random effects in the top models for each season indicated that selection was most variable in the rendezvous season and for anthropogenic linear features in the winter, but were comparable within the denning season for both types of anthropogenic linear features ([Table 3](#), [Fig 4](#)).

We found evidence for a significant functional response to water linear features in all seasons ([Fig 4](#)). As density of natural linear features increased, selection also increased. The functional response to water linear features was strongest during the rendezvous season ([Fig 4](#)). In

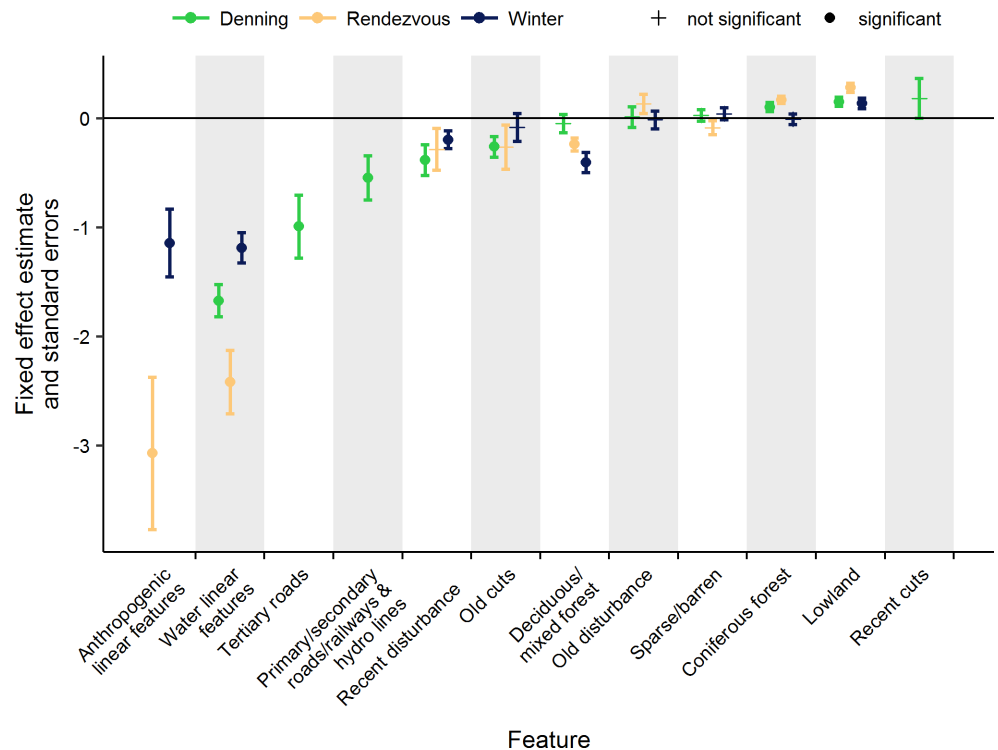


Fig 2. Parameter estimates and standard errors for fixed effects in the top selected models using the Functional Availability method, describing selection of landscape variables by wolves in northern Ontario, Canada, 2010–2014. Symbols indicate significance for $\alpha = 0.05$. Negative values indicate selection.

<https://doi.org/10.1371/journal.pone.0186525.g002>

all seasons of the year, as anthropogenic linear feature density increased, wolf selection for these features also increased (all slopes were significantly below zero) while selection for natural linear features decreased accordingly (all slopes were significantly greater than zero; selection is indicated by negative selection coefficients, Fig 5). Very few wolves exhibited positive or neutral selection coefficients for anthropogenic linear features (i.e., it was rare that wolves used those features proportionally less compared to their availability). When weakly positive coefficients did occur it was generally at low to moderate linear feature densities. The strongest functional response to anthropogenic linear features occurred during the rendezvous season. The most marked decrease in selection for water with increased density of primary/secondary roads/railways and hydro lines occurred during the denning season (Fig 5, note scale of x-axis).

Discussion

We studied selection by resident wolves for anthropogenic and natural linear features in a heterogeneous landscape in northern Ontario. We show evidence supporting a functional response to the density of water and anthropogenic linear features during all seasons of the year. Wolves selected areas closer to water when it was more available on the landscape, but we found an inverse relationship between selection for natural and anthropogenic linear features. Specifically, as density of anthropogenic linear features increased, selection for those features increased and selection for natural linear features decreased. While we did not investigate total time spent on each linear feature type, this evidence strongly suggests at least partially compensatory use of anthropogenic vs natural linear features, as additive use would manifest as no

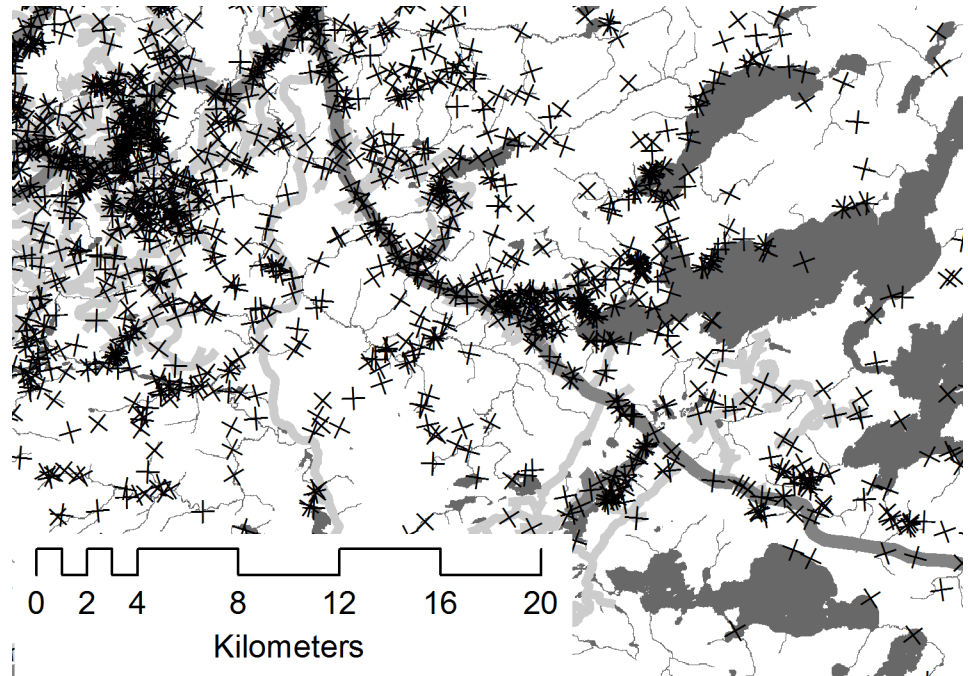


Fig 3. Filtered GPS fixes (crosses) of 5 wolves in the Nakina study area, 2010–2014. Dark grey shading and thin lines are streams, rivers, and lakes; thick dark lines are primary roads, and thick light lines are tertiary roads.

<https://doi.org/10.1371/journal.pone.0186525.g003>

relationship between selection for natural vs anthropogenic linear features and density of anthropogenic linear features on the landscape.

Apparent competition causing declines of caribou across their range is a broadly studied phenomenon, and increased predation of caribou due to increases in wolf abundance or increased ability of wolves to permeate the landscape have been implicated as causal mechanisms [6, 21, 27, 81]. Our study represents an important mechanistic puzzle-piece not previously demonstrated: wolves with greater access to roads and other human-made corridors select natural linear features such as lake and river edges and streams less. Our research further emphasizes the strong selection for anthropogenic linear features by wolves and the potential importance of these features in mediating wolf movements, and by extension potentially influencing encounter rates with prey.

We note that the global fixed effects structure was selected as the top model, even though non-significant factors were present. We suspect this effect could be due to false precision due to high sample sizes of “available” points compared to “used” points. However, we believe our model was biologically relevant and that using a large number of “available” points allowed us

Table 3. Covariance and standard errors for random effects in the top selected models for each season describing selection of landscape variables by wolves in northern Ontario, Canada, 2010–2014.

Feature	Denning	Rendezvous	Winter
Intercept	0.227 ± 0.048	0.706 ± 0.140	0.184 ± 0.038
anthropogenic linear features × availability	-	14.141 ± 4.929	3.016 ± 1.668
tertiary roads × availability	1.195 ± 0.764	-	-
primary/secondary roads/railways & hydro lines × availability	1.218 ± 0.513	-	-
water	0.797 ± 0.166	2.853 ± 0.860	0.684 ± 0.209

<https://doi.org/10.1371/journal.pone.0186525.t003>

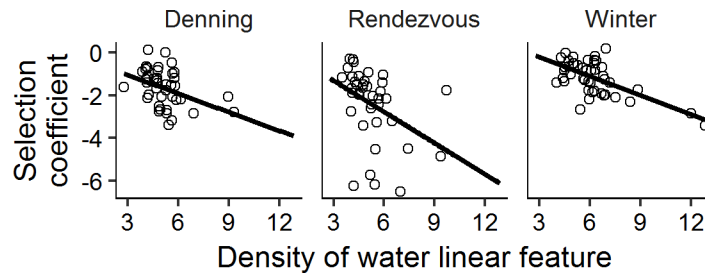


Fig 4. Functional response relationships between density of water linear features and selection for water linear features for wolves in northern Ontario, Canada, 2010–2014. All slopes were significantly different than zero ($P < 0.027$ for all relationships); $R^2_{GLMM(m)}$ for each relationship was > 0.15 . Negative selection coefficients indicate selection.

<https://doi.org/10.1371/journal.pone.0186525.g004>

to more accurately model habitat within each home range. Further, while using rescaled variables in our models was useful in determining relative importance of features and enabled model convergence, it did not facilitate direct comparison between selection for anthropogenic to natural features.

Wolves selected anthropogenic and water linear features throughout the year, but the strength of selection varied seasonally. Compared to selection for anthropogenic linear features, the odds of wolves selecting water linear features were higher in the denning season, similar in winter, and lower in the rendezvous season. We suggest that these differences reflect a shifting balance in optimal foraging strategies as accessibility of prey items and permeability of the landscape changes throughout the year. During the denning season wolves may use natural features as corridors more frequently because they select denning areas close to water [56] and likely make shorter hunting forays. Riparian habitats are also frequently visited in summer because beaver are an important food source [82]. Further, in the snow-free season large lakes and major rivers may act as at least partial barriers. For example, migrating caribou are

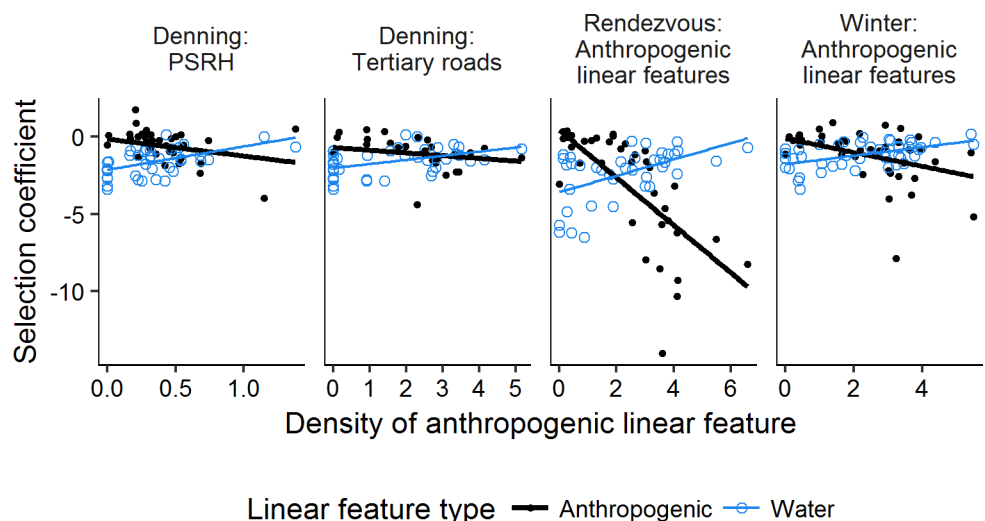


Fig 5. Functional response relationships between density of anthropogenic linear features and selection for anthropogenic and natural linear features by wolves in northern Ontario, Canada, 2010–2014. All slopes were significantly different than zero ($P < 0.037$ for all relationships); $R^2_{GLMM(m)}$ for each relationship was > 0.11 . Negative selection coefficients indicate selection. PSRH = Primary/secondary roads/railways & hydrolines.

<https://doi.org/10.1371/journal.pone.0186525.g005>

deflected by large open water bodies and often follow the water's edge to reach their destination [83]. Therefore, selection may be in part a side effect of large water bodies acting as barriers in the ice-free season. Whereas Dickie et al. [25] found that wolves selected long, straight linear features over more narrow and sinuous features, we found that during the denning season wolves selected tertiary roads (which in our study were short, narrow, and sinuous) more often than primary/secondary roads/railways and hydro lines.

Wolves often cover large distances in winter [84–86] and frozen waterways are an important travel corridor [37, 87]. In this season travel on all linear features could be facilitated by compacted, hard-crusting snow or impeded by deep, soft snow [25, 85, 88]. Both plowed and unplowed anthropogenic linear features were associated with lower sinking depths than natural areas in Alberta, making them energetically more favourable for wolf travel during the winter, but plowed roads were associated with much lower sinking depths than any other habitat type [38]. In our study area, most tertiary roads and many secondary roads were not maintained during winter, and therefore likely represented similar sinking depths to rivers, but were likely lower (more favourable) than other natural areas [38].

The rendezvous season possibly represents the most favourable energetic balance for wolves using anthropogenic linear features. By nature, anthropogenic linear features likely facilitate faster travel than water linear features during the snow-free season, but to our knowledge, movement rates on both types of features have not been compared. During the rendezvous season, wolves generally switch from smaller prey such as beaver to larger prey [82, 89] and may use anthropogenic linear features preferentially to facilitate faster travel and increased efficiency before roads become snowed in and when rivers and lakes are still open. Moose also prefer early seral stage forests associated with recent cuts and tertiary roads in northern Ontario, and because wolves may select habitat preferred by prey [32, 90], traveling on these features could increase hunting success. We also note that during the winter and rendezvous seasons, recent cuts had to be excluded from the candidate models because they were too highly correlated with tertiary roads. During denning season, models indicated that recent cuts were not used. Even though we followed accepted standards on when to exclude related variables, we believe that the parameter estimate indicating less use of recent cuts in the denning season is an artifact of multicollinearity.

In general, throughout the year wolves selected recent disturbances, old cuts, and deciduous mixed forests and did not use coniferous forests and lowlands. Although we filtered the data to remove many locations associated with bed or kill sites, some selection may have still represented general use and not features used for traveling. Overall, selection was likely related to the tendency for wolves to select areas where prey forage resources are high [32, 90, 91], and to not use areas with low prey density or that hinder travel. For example, moose—the main ungulate prey of wolves in northern Ontario [42, 91]—prefer early successional, disturbed, and deciduous mixed forests [45, 53, 54, 92]—habitat types that were selected by wolves in this study. Caribou are known to “space away” from predators and choose habitat not frequented by wolves. Evidence suggests caribou select coniferous forests and lowlands and do not use disturbed areas [93–95].

This study has important implications for studies of wolf movement rates on anthropogenic linear features and “other” habitat, especially if all “non-linear feature” habitat is grouped together (e.g. [25, 37]). If wolves use waterways as travel corridors, their speed on these features may be increased compared to in wetlands or forests. Therefore, studies investigating speed of travel “off” linear features should include natural linear features as a separate habitat class. Further, we studied only resident wolves, but because transient wolves have different movement patterns and may encounter caribou more often than resident wolves [27], their space use and behaviour should be incorporated in future work to understand the full complement of effects

linear features may have on wolf-caribou interactions. Our methods would have been unable to estimate habitat availability for transients, but approaches based on step selection functions [96, 97] or using Brownian bridge models (e.g. [98]) would overcome this hurdle.

Wolves displayed a functional response to anthropogenic linear features during all seasons. Areas containing multiple or wider features suitable for travel are used more often than areas with greater landscape resistance [99]. Therefore, wolves living in ranges containing a dense network of anthropogenic linear features may select these features disproportionately, as it allows them to move more efficiently across the landscape. It is possible that at low densities, anthropogenic linear features are novel on the landscape and therefore relatively unused (indicated by positive coefficients), but that at increasing densities anthropogenic linear features become more familiar and useful as travel routes. Hebblewhite and Merrill [10] found that selection was related more to the amount of human activity than to anthropogenic linear feature density. However, in our study area human activity overall was low, and density of anthropogenic linear features was likely more important.

In landscapes with a low level of logging activity, road density strongly influenced wolf space use [24, 45]. Houle et al. [45] found no functional response to road density in the denning season, and in contrast to our findings, they showed that in the rendezvous and winter seasons wolves did not use roads when road density was high [45]. However, sample size in their study was low compared to ours and human activity was likely much higher than in our study area. In our study, only a few wolves had individual selection coefficients that indicated less use of anthropogenic linear features compared to their availability, and all but one of these occurred at low to moderate anthropogenic linear feature densities (Fig 5). The only wolf that showed some evidence of not using primary/secondary roads/railways and hydro lines at high anthropogenic linear feature density had a denning territory that surrounded a small town.

A functional response to density of water linear features was evident in each season in our study area. Water was fairly ubiquitous in all study areas compared to the density of anthropogenic linear features. A functional response to these features in the snow-free seasons likely reflects increased use of riparian habitats for hunting and greater mobility along connected waterways and lake edges. In winter, frozen waterways are excellent travel corridors for wolves and represent a significant improvement in mobility over other landscape types [38].

The variation in selection coefficients for anthropogenic and natural linear features was markedly larger in the rendezvous season compared to denning or winter. This pattern may be related to division of labour within the pack: wolves have different roles within the pack during the rendezvous season, with mothers generally staying closer to pups, and other pack members becoming more active to compensate [100]. Wolf packs tend to be more cohesive during winter with the pack functioning more as a single unit [85, 101]. This likely accounts for the lower variability in selection coefficients documented during winter.

Conclusions

Throughout the year, decreased selection for water linear features was correlated with greater density and selection for anthropogenic linear features. We demonstrated that selection of anthropogenic linear features is at least partially compensatory—depending on the density of these features, wolves may switch from using natural corridors to anthropogenic features. Previously, increases in wolf velocity across the landscape, related to increased density and use of roads, were linked to higher kill rates of moose in our study areas [28]. Future studies estimating the impact of anthropogenic linear features on wolf-prey dynamics should not overlook the compensatory relationship between use of these features and natural linear features. Quantifying the effects of increasing density of different types of linear feature classes on predator-

prey relationships is complicated because use is not necessarily additive. Future research should quantify wolf movement rates on anthropogenic versus natural linear features and attempt to predict the net effects of varying degrees of anthropogenic disturbance on the rates of encounter between wolves and their prey. A further consideration is that if wolves switch from using natural to anthropogenic linear features, the relative use of different prey species may change not only because of increased velocity and success in these areas [25–28], but because natural corridors (waterways) where prey such as beaver are more likely to be encountered are used less. Managers should consider the potential impact of new linear features on the landscape that are located far from natural travel routes such as rivers and lakes as these may facilitate wolf use of areas that would otherwise be avoided. Specifically, we recommend that any efforts to rehabilitate or add new anthropogenic linear features should consider the arrangement of the water network. Viewing the road and water network as a whole will paint a more comprehensive picture of wolf travel routes and potential implications for woodland caribou.

Supporting information

S1 Table. Mean and range of number of used or available locations for each wolf-year-season combination.

(PDF)

S2 Table. Summary of how many wolf-season-year combinations did not have a feature available within a seasonal range.

(PDF)

S1 Fig. Season delineation, tortuosity and velocity of resident adult wolves in northern Ontario, Canada, 2010–2014. Season limits are shown with a thin grey line.

(PDF)

S1 File. Results for the Maximum Distance method. Comparison of the Maximum Distance vs Functional Availability methods.

(PDF)

Acknowledgments

We thank Rod Brook, Daniel Fortin and Chevell Parker for help with SAS code and modeling. Eric Howe, Guillaume Bastille-Rousseau, John Fieberg, Rob Rempel, Greg Snow, and Ben Bolker provided statistical advice, but any errors are our own. We extend a special thanks to John Benson for his tireless support regarding the statistical aspects of this research, and to an anonymous reviewer for suggestions that improved the final manuscript. We thank also Jevon Hagens, Andrew Kittle, Nick Jones, and Bastian Schmidt for assistance with and conversations around spatial data and Tal Avgar for support with the wolf data. We thank Scott Moffatt, who collected data in the field, and to numerous field technicians. We are grateful to staff at the Centre for Northern Forest Ecosystem Research for logistical support in the field.

Author Contributions

Conceptualization: Erica J. Newton, Brent R. Patterson, Arthur R. Rodgers.

Formal analysis: Erica J. Newton.

Investigation: Brent R. Patterson, Morgan L. Anderson, Lucas M. Vander Vennen.

Supervision: Brent R. Patterson, Arthur R. Rodgers, John M. Fryxell.

Visualization: Erica J. Newton.

Writing – original draft: Erica J. Newton.

Writing – review & editing: Brent R. Patterson, Morgan L. Anderson, Arthur R. Rodgers, Lucas M. Vander Vennen, John M. Fryxell.

References

1. Wittmer HU, McLellan BN, Serrouya R, Apps CD (2007) Changes in landscape composition influence the decline of a threatened woodland caribou population. *J Anim Ecol* 76:568–579 <https://doi.org/10.1111/j.1365-2656.2007.01220.x> PMID: 17439473
2. Cordeiro NJ, Howe HF (2003) Forest fragmentation severs mutualism between seed dispersers and an endemic African tree. *Proc Natl Acad Sci USA* 100:14052–14056 <https://doi.org/10.1073/pnas.2331023100> PMID: 14614145
3. Boisjoly D, Ouellet J-P, Courtois R (2010) Coyote habitat selection and management implications for the Gaspésie caribou. *J Wildl Manage* 74:3–11
4. Bolger DT, Newmark WD, Morrison TA, Doak DF (2008) The need for integrative approaches to understand and conserve migratory ungulates. *Ecol Lett* 11:63–77 <https://doi.org/10.1111/j.1461-0248.2007.01109.x> PMID: 17897327
5. Benson JF, Patterson BR, Mahoney PJ (2014) A protected area influences genotype-specific survival and the structure of a *Canis* hybrid zone. *Ecology* 95:254–264 PMID: 24669720
6. Serrouya R, Wittmann MJ, McLellan BN, Wittmer HU, Boutin S (2015) Using predator-prey theory to predict outcomes of broadscale experiments to reduce apparent competition. *Am Nat* 185:665–79 <https://doi.org/10.1086/680510> PMID: 25905509
7. Burger LD, Burger LW, Faaborg JJ (1994) Effects of prairie fragmentation on predation on artificial nests. *J Wildl Manage* 58:249–254
8. Browne CL, Hecnar SJ (2007) Species loss and shifting population structure of freshwater turtles despite habitat protection. *Biol Conserv* 138:421–429
9. Schneider MF (2001) Habitat loss, fragmentation and predator impact: Spatial implications for prey conservation. *J Appl Ecol* 38:720–735
10. Hebblewhite M, Merrill EE (2008) Modelling wildlife-human relationships for social species with mixed-effects resource selection models. *J Appl Ecol* 45:834–844
11. Moreau G, Fortin D, Couturier S, Duchesne T (2012) Multi-level functional responses for wildlife conservation: the case of threatened caribou in managed boreal forests. *J Appl Ecol* 49:611–620
12. Zimmermann B, Nelson L, Wabakken P, Sand H, Liberg O (2014) Behavioral responses of wolves to roads: scale-dependent ambivalence. *Behav Ecol* 25:1353–1364 <https://doi.org/10.1093/beheco/aru134> PMID: 25419085
13. COSEWIC (2014) COSEWIC assessment and status report on the caribou *Rangifer tarandus*, Newfoundland population, Atlantic-Gaspésie population and Boreal population, in Canada. Ottawa, Ontario
14. Vors LS, Boyce MS (2009) Global declines of caribou and reindeer. *Glob Chang Biol* 15:2626–2633
15. Environment Canada (2011) Scientific assessment to inform the identification of critical habitat for woodland caribou (*Rangifer tarandus* caribou), boreal population, in Canada: 2011 update. Ottawa, Ontario, Canada. http://www.sararegistry.gc.ca/document/default_e.cfm?documentID=2248
16. Schaefer JA (2003) Long-term range recession and the persistence of caribou in the taiga. *Conserv Biol* 17:1435–1439
17. Latham ADM, Latham MC, Knopff KH, Hebblewhite M, Boutin S (2013) Wolves, white-tailed deer, and beaver: implications of seasonal prey switching for woodland caribou declines. *Ecography (Cop)* 36:1276–1290
18. Rempel RS, Elkie PC, Rodgers AR, Gluck MJ (1997) Timber-management and natural-disturbance effects on moose habitat: Landscape evaluation. *J Wildl Manage* 61:517–524
19. Serrouya R, McLellan BN, Boutin S, Seip DR, Nielsen SE (2011) Developing a population target for an overabundant ungulate for ecosystem restoration. *J Appl Ecol* 48:935–942
20. Holt RD (1977) Predation, apparent competition, and the structure of prey communities. *Theor Popul Biol* 12:197–229 PMID: 929457

21. Hervieux D, Hebblewhite M, Stepnisky D, Bacon M, Boutin S (2014) Managing wolves (*Canis lupus*) to recover threatened woodland caribou (*Rangifer tarandus caribou*) in Alberta. *Can J Zool* 92:1029–1037
22. Environment Canada (2012) Recovery strategy for the woodland caribou (*Rangifer tarandus caribou*), Boreal population, in Canada. Species at Risk Act Recovery Strategy Series, Ottawa, Ontario. 10.2307/3796292
23. James AR, Stuart-Smith AK (2000) Distribution of caribou and wolves in relation to linear corridors. *J Wildl Manage* 64:154–159
24. Whittington J, St Clair CC, Mercer G (2005) Spatial responses of wolves to roads and trails in mountain valleys. *Ecol Appl* 15:543–553
25. Dickie M, Serrouya R, McNay RS, Boutin S (2017) Faster and farther: wolf movement on linear features and implications for hunting behaviour. *J Appl Ecol* 54:253–263 <https://doi.org/10.1111/1365-2664.12732>
26. McKenzie HW, Merrill EH, Spiteri RJ, Lewis MA (2012) How linear features alter predator movement and the functional response. *Interface Focus* 2:205–16 <https://doi.org/10.1098/rsfs.2011.0086> PMID: 22419990
27. Whittington J, Hebblewhite M, Decesare NJ, Neufeld L, Bradley M, Wilmshurst J, et al. (2011) Caribou encounters with wolves increase near roads and trails: a time-to-event approach. *J Appl Ecol* 48:1535–1542
28. Moffatt S (2012) Time to event modelling: Wolf search efficiency in northern Ontario. MSc Thesis. University of Guelph
29. Vander Vennen LM, Patterson BR, Rodgers AR, Moffatt S, Anderson ML, Fryxell JM (2016) Diet movement patterns influence daily variation in wolf kill rates on moose. *Funct Ecol* 30:1568–1573
30. MacNulty DR, Mech LD, Smith DW (2007) A proposed ethogram of large-carnivore predatory behavior, exemplified by the wolf. *J Mammal* 88:595–605
31. Latham A, Latham M, Boyce MS, Boutin S (2011) Movement responses by wolves to industrial linear features and their effect on woodland caribou in northeastern Alberta. *Ecol Appl* 21:2854–2865
32. Kittle AM, Anderson M, Avgar T, Baker JA, Brown GS, Hagens J, et al. (2017) Landscape-level wolf space use is correlated with prey abundance, ease of mobility, and the distribution of prey habitat. *Ecosphere* 8:e01783
33. McLoughlin PD, Dzus E, Wynes B, Boutin S (2003) Declines in populations of woodland caribou. *J Wildl Manage* 67:755–761
34. Manly BFJ, McDonald LL, Thomas DL, McDonald TL, Erickson WP (2002) Resource selection by animals: Statistical design and analysis for field studies, 2nd ed. Kluwer Academic Publishers, Dordrecht
35. Leblond M, Dussault C, Ouellet J-P, St-Laurent M-H (2016) Caribou avoiding wolves face increased predation by bears—Caught between Scylla and Charybdis. *J Appl Ecol* 53:1078–1087
36. Laforge MP, Brook RK, van Beest FM, Bayne EM, McLoughlin PD (2015) Grain-dependent functional responses in habitat selection. *Landsc Ecol* 31:855–863
37. Musiani M, Okarma H, Jędrzejewski W (1998) Speed and actual distances travelled by radiocollared wolves in Białowieża Primeval Forest (Poland). *Acta Theriol (Warsz)* 43:409–416
38. Droghini A, Boutin S (2017) Snow conditions on grey wolf (*Canis lupus*) travel paths: the effect of human-created linear features. *Can J Zool* (in press)
39. Hjartarson J, McGuinty L, Boutilier S, Majernikova E (2014) Beneath the surface: Uncovering the economic potential of Ontario's Ring of Fire. Ontario Chamber of Commerce, Toronto, Ontario
40. Crins WJ, Gray PA, Uhlig PWC, Wester MC (2009) The ecosystems of Ontario, Part I: Ecozones and ecoregions. Ontario Ministry of Natural Resources, Peterborough, Ontario, Inventory, Monitoring and Assessment, SIB TER IMA TR-01.
41. Ontario Ministry of Natural Resources (2005) Strategy for wolf conservation in Ontario. Queen's Printer, Toronto, Ontario
42. Found R, McLaren A, Rodgers AR, Patterson BR (2017) Diet of grey wolves (*Canis lupus*) during calving in a moose-caribou system in northern Ontario. *Can Field-Naturalist* (in press)
43. Lesmerises F, Dussault C, St-Laurent M (2012) Wolf habitat selection is shaped by human activities in a highly managed boreal forest. *For Ecol Manage* 276:125–131
44. Basille M, Fortin D, Dussault C, Ouellet J-P, Courtois R (2013) Ecologically based definition of seasons clarifies predator-prey interactions. *Ecography (Cop)* 36:220–229
45. Houle M, Fortin D, Dussault C, Courtois R, Ouellet J-P (2010) Cumulative effects of forestry on habitat use by gray wolf (*Canis lupus*) in the boreal forest. *Landsc Ecol* 25:419–433

46. Lele SR, Merrill EH, Keim J, Boyce MS (2013) Selection, use, choice and occupancy: clarifying concepts in resource selection studies. *J Anim Ecol* 82:1183–91 <https://doi.org/10.1111/1365-2656.12141> PMID: 24499379
47. R Core Team (2014) R: A language for environmental and statistical computing. R Foundation for Statistical Computing. Vienna, Austria
48. Kie JG (2013) A rule-based ad hoc method for selecting a bandwidth in kernel home-range analyses. *Anim Biotelemetry* 1:13
49. Laver PN (2005) Abode: Kernel home range estimation for ArcGIS, using VBA and ArcObjects: User Manual. Blacksburg, Virginia
50. OMNR (2013) Far North Land Cover Data Specifications Version 1.3.1.
51. Hogg AR (2014) Far North Land Cover (Version 1.2) Accuracy Assessment Report. Peterborough, Ontario
52. Kittle AM, Anderson M, Avgar T, Baker JA, Brown GS, Hagens J, et al. (2015) Wolves adapt territory size, not pack size to local habitat quality. *J Anim Ecol* 84:1177–1186 <https://doi.org/10.1111/1365-2656.12366> PMID: 25757794
53. Street GM, Vander Vennen LM, Avgar T, Mosser A, Anderson ML, Rodgers AR, et al. (2015) Habitat selection following recent disturbance: model transferability with implications for management and conservation of moose (*Alces alces*). *Can J Zool* 93:813–821
54. Courtois R, Dussault C, Potvin F, Daigle G (2002) Habitat selection by moose (*Alces alces*) in clear-cut landscape. *Alces* 38:177–192
55. Fisher JT, Wilkinson L (2005) The response of mammals to forest fire & timber harvest in the North American boreal forest. *Mamm Rev* 35:51–81
56. Benson JF, Mills KJ, Patterson BR (2015) Resource selection by wolves at dens and rendezvous sites in Algonquin park, Canada. *Biol Conserv* 182:223–232
57. Conner LM, Plowman BW (2001) Using Euclidean distances to assess non-random habitat use. In: Millsbaugh JJ, Marzluff JM (eds) *Radiotracking Anim. Popul.* Academic Press, San Diego, California, pp 275–290
58. Conner LM, Smith MD, Burger LW (2003) A comparison of distance-based and classification-based analyses of habitat use. *Ecology* 84:526–531
59. Johnson D (1980) The comparison of usage and availability measurements for evaluating resource preference. *Ecology* 61:65–71
60. Fieberg J, Matthiopoulos J, Hebblewhite M, Boyce MS, Frair JL (2010) Correlation and studies of habitat selection: problem, red herring or opportunity? *Philos Trans R Soc Lond B Biol Sci* 365:2233–44 <https://doi.org/10.1098/rstb.2010.0079> PMID: 20566500
61. Obbard ME, Coady MB, Pond BA, Schaefer JA, Burrows FG (2010) A distance-based analysis of habitat selection by American black bears (*Ursus americanus*) on the Bruce Peninsula, Ontario, Canada. *Can J Zool* 88:1063–1076
62. Fritts SH, Mech LD (1981) Dynamics, movements, and feeding ecology of a newly protected wolf population in northwestern Minnesota. *Wildl Monogr* 80:3–79
63. Peterson RO, Page RE, Dodge KM (1984) Wolves, moose, and the allometry of population cycles. *Science* 224:1340–1352
64. Messier F (1985) Social organization, spatial distribution, and population density of wolves in relation to moose density. *Can J Zool* 63:1068–1077
65. Fuller TK (1989) Population dynamics of wolves in north-central Minnesota. *Wildl Monogr* 105:3–41
66. Gelman A (2008) Scaling regression inputs by dividing by two standard deviations. *Stat Med* 27:2865–2873 <https://doi.org/10.1002/sim.3107> PMID: 17960576
67. Gelman A, Hill J (2007) *Data analysis using regression and multilevel/hierarchical models.* Cambridge University Press, New York
68. Fondell TF, Miller DA, Grand JB, Anthony RM (2008) Success survival of dusky Canada goose goslings in relation to weather and annual nest success. *J Wildl Manage* 72:1614–1621
69. Bolker BM, Brooks ME, Clark CJ, Geange SW, Poulsen JR, Stevens MHH, et al. (2009) Generalized linear mixed models: a practical guide for ecology and evolution. *Trends Ecol Evol* 24:127–35 <https://doi.org/10.1016/j.tree.2008.10.008> PMID: 19185386
70. Zuur AF, Ieno EN, Walker NJ, Saveliev AA, Smith GM (2009) Mixed effects models and extensions in ecology with R. *Stat Biol Heal.* <https://doi.org/10.1007/978-0-387-87458-6>

71. Gillies CS, Hebblewhite M, Nielsen SE, Krawchuk MA., Aldridge CL, Frair JL, et al. (2006) Application of random effects to the study of resource selection by animals. *J Anim Ecol* 75:887–898 PMID: [17009752](#)
72. Dormann CF, Elith J, Bacher S, Buchmann C, Carl G, Carré G, et al. (2012) Collinearity: a review of methods to deal with it and a simulation study evaluating their performance. *Ecography* 36:1–20
73. Schwarz G (1978) Estimating the dimension of a model. *Ann Stat* 6:461–464
74. Boyce MS, Vernier PR, Nielsen SE, Schmiegelow FKA (2002) Evaluating resource selection functions. *Ecol Modell* 157:281–300
75. Hebblewhite M, Merrill E (2008) Modelling wildlife-human relationships for social species with mixed-effects resource selection models. *J Appl Ecol* 45:834–844
76. Bastille-Rousseau G, Fortin D, Dussault C, Courtois R, Ouellet JP (2011) Foraging strategies by omnivores: Are black bears actively searching for ungulate neonates or are they simply opportunistic predators? *Ecography (Cop)* 34:588–596
77. Fortin M (2013) Population-averaged predictions with generalized linear mixed-effects models in forestry: an estimator based on Gauss–Hermite quadrature. *Can J For Res* 138:129–138
78. Kuznetsova A, Brockhoff PB, Christensen RHB (2015) lmerTest: Tests in linear mixed effects models. R package version 2.0–29. <https://CRAN.R-project.org/package=lmerTest>
79. Nakagawa S, Schielzeth H (2013) A general and simple method for obtaining R^2 from generalized linear mixed-effects models. *Methods Ecol Evol* 4:133–142
80. DeCesare NJ, Hebblewhite M, Schmiegelow F, Hervieux D, McDermid GJ (2012) Transcending scale dependence in identifying habitat with resource selection functions. *Ecol Appl* 22:1068–1083 PMID: [22827119](#)
81. Latham ADM, Latham MC, McCutchen NA, Boutin S (2011) Invading white-tailed deer change wolf-caribou dynamics in northeastern Alberta. *J Wildl Manage* 75:204–212
82. Latham A (2009) Wolf ecology and caribou-primary prey-wolf spatial relationships in low productivity peatland complexes in northeastern Alberta. PhD thesis. University of Alberta
83. Leblond M, St-Laurent M-H, Côté SD (2016) Caribou, water, and ice—fine-scale movements of a migratory arctic ungulate in the context of climate change. *Mov Ecol* 4:1–12
84. Potvin F (1988) Wolf movements and population dynamics in Papineau-Labelle reserve, Quebec. *Can J Zool* 66:1266–1273
85. Fuller TK (1991) Effect of snow depth on wolf activity and prey selection in north central Minnesota. *Can J Zool* 69:821–821
86. Gese EM, Mech LD (1991) Dispersal of wolves (*Canis lupus*) in northeastern Minnesota, 1969–1989. *Can J Zool* 69:2946–2955
87. Mech LD, Boitani L (2003) Wolf social ecology. In: Mech LD, Boitani L (eds) *Wolves Behav. Ecol. Conserv.* University of Chicago Press, Chicago, Illinois, pp 1–34
88. Huggard DJ (1993) Effect of snow depth on predation and scavenging of gray wolves. *J Wildl Manage* 57:382–388
89. Metz MC, Smith DW, Vucetich JA, Stahler DR, Peterson RO (2012) Seasonal patterns of predation for gray wolves in the multi-prey system of Yellowstone National Park. *J Anim Ecol* 81:553–563 <https://doi.org/10.1111/j.1365-2656.2011.01945.x> PMID: [22260633](#)
90. Courbin N, Fortin D, Dussault C, Courtois R (2014) Logging-induced changes in habitat network connectivity shape behavioral interactions in the wolf-caribou-moose system. *Ecol Monogr* 84:265–285
91. Holloway J (2009) Size dependent resource use of a hybrid wolf (*C. lycaon* x *C. lupus*) population in northeast Ontario. MSc Thesis. Trent University
92. Maier JA, Ver Hoef JM, McGuire AD, Bowyer RT, Saperstein L, Maier HA (2005) Distribution and density of moose in relation to landscape characteristics: effects of scale. *Can J For Res* 35:2233–2243
93. Hornseth ML, Rempel RS (2016) Seasonal resource selection of woodland caribou (*Rangifer tarandus caribou*) across a gradient of anthropogenic disturbance. *Can J Zool* 94:79–93
94. Rettie WJ, Messier F (2000) Hierarchical habitat selection by woodland caribou: Its relationship to limiting factors. *Ecography (Cop)* 23:466–478
95. McGreer MT, Mallon EE, Vander Vennen LM, Wiebe P.A., Baker J.A., Brown G.S., et al. (2015) Selection for forage and avoidance of risk by woodland caribou (*Rangifer tarandus caribou*) at coarse and local scales. *Ecosphere* 6:1–11
96. Thurfjell H, Ciuti S, Boyce MS (2014) Applications of step-selection functions in ecology and conservation. *Mov Ecol* 2:4 <https://doi.org/10.1186/2051-3933-2-4> PMID: [25520815](#)

97. Fortin D, Beyer HL, Boyce MS, Smith DW, Duchesne T, Mao JS (2005) Wolves influence elk movements: behavior shapes a trophic cascade in Yellowstone National Park. *Ecology* 86:1320–1330
98. Kranstauber B, Kays R, Lapoint SD, Wikelski M, Safi K (2012) A dynamic Brownian bridge movement model to estimate utilization distributions for heterogeneous animal movement. *J Anim Ecol* 81:738–746 <https://doi.org/10.1111/j.1365-2656.2012.01955.x> PMID: 22348740
99. McRae BH, Beier P (2007) Circuit theory predicts gene flow in plant and animal populations. *Proc Natl Acad Sci USA* 104:19885–19890 <https://doi.org/10.1073/pnas.0706568104> PMID: 18056641
100. Tsunoda H, Gula R, Theuerkauf J, Rouys S, Radler S, Pirga B, et al. (2009) How does parental role influence the activity and movements of breeding wolves? *J Ethol* 27:185–189
101. Benson JF, Patterson BR (2015) Spatial overlap, proximity, and habitat use of individual wolves within the same packs. *Wildl Soci* 39:31–40.