

Case Report

Renal Cell Carcinoma in a Horseshoe Kidney Treated with Laparoscopic Partial Nephrectomy

Shinji Ohtake,^{1,2} Takashi Kawahara ,^{1,3} Go Noguchi,⁴ Noboru Nakaigawa ,¹
Kimio Chiba,² Hiroji Uemura ,³ Masahiro Yao,¹ and Kazuhide Makiyama¹

¹Department of Urology, Yokohama City University Graduate School of Medicine, Yokohama, Japan

²Department of Urology, Kawasaki Municipal Ida Hospital, Kawasaki, Japan

³Departments of Urology and Renal Transplantation, Yokohama City University Medical Center, Yokohama, Japan

⁴Department of Urology, Kanagawa Cancer Center, Yokohama, Japan

Correspondence should be addressed to Takashi Kawahara; takashi_tk2001@yahoo.co.jp

Received 25 January 2018; Accepted 30 April 2018; Published 7 June 2018

Academic Editor: Constantine Gennatas

Copyright © 2018 Shinji Ohtake et al. This is an open access article distributed under the Creative Commons Attribution License, which permits unrestricted use, distribution, and reproduction in any medium, provided the original work is properly cited.

Introduction. Horseshoe kidney is one of the most common congenital renal fusion anomalies. Due to its poor mobility and abnormal vasculature form, surgeons should pay close attention to all anatomical variations. *Case Presentation.* An 83-year-old woman was referred to our hospital because of left renal tumor in a horseshoe kidney incidentally found by her previous hospital. We performed laparoscopic partial nephrectomy. The pathological diagnosis was clear cell renal cell carcinoma. G2 INFA V-pT1a with a negative surgical margin. No evidence of recurrence has been noted, and the renal function is well preserved at 28 months after surgery. *Conclusion.* When performing laparoscopic partial nephrectomy for renal carcinoma, especially a horseshoe kidney, preoperative imaging is crucial for identifying the location of the renal vessels.

1. Introduction

Partial nephrectomy for small renal tumor has the same cancer control rate as nephrectomy and good results in terms of the preservation of the renal function. Laparoscopic partial nephrectomy is now the gold standard for such tumors [1–3].

Due to anatomical issues, surgical planning is difficult when a tumor arises in a horseshoe kidney. Laparoscopic partial nephrectomy for horseshoe kidney tumors therefore remains challenging.

We herein report a case of small renal cell carcinoma arisen in a horseshoe kidney successfully resected by laparoscopic partial nephrectomy using preoperative three-dimensional (3D) imaging.

2. Case Presentation

An 83-year-old woman was referred to our department for further examination of a left renal tumor 20 mm in

diameter in her horseshoe kidney. She had no remarkable medical history except for uterine cancer at 49 years of age. The laboratory data showed slight anemia and a low liver function (Hb 12.3 g/dL, AST 52 IU/L, ALT44IU/L, and LDH 201 IU/L).

Contrast-enhanced computed tomography (CT) showed a renal tumor covered with a capsule and buried by nearly 30%. The tumor was supplied by four arteries toward the left kidney (Figure 1). We set the laparoscopic ports as shown in Figure 2. We first approached intraperitoneally and then cut the peritoneal and approached to the renal hilum. We encountered a thin artery and cut it after confirming the supplied area by clamping. We then clamped the main artery and cut the tumor with a 1 mm surgical margin. No urinary tract leakage was observed. After coagulation using bipolar forceps, we sutured using 1-0 Vicryl (Ethicon, Cincinnati, OH, USA) then sprayed with Arista AH (BARD; Warwick, RI, USA). We then fixed the thread as shown in Figure 3. After confirming the lack of active bleeding, we placed a

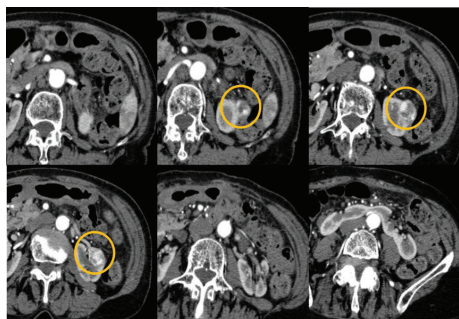


FIGURE 1: Contrast-enhanced CT. An enhanced tumor 20 mm in diameter was observed in the upper pole of the left-side horseshoe kidney.

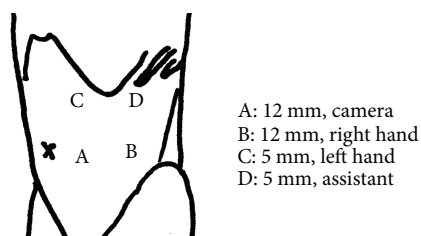


FIGURE 2: Laparoscopic ports in this case.

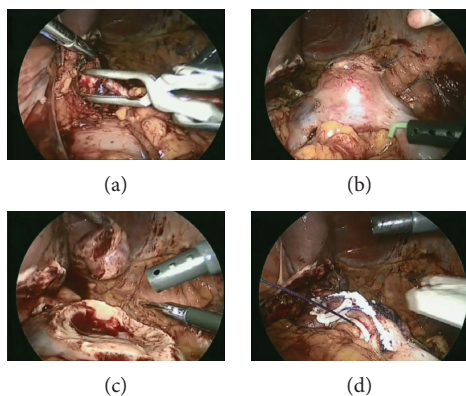


FIGURE 3: Laparoscopic findings. (a) Left renal artery, (b) tumor, (c) after partial nephrectomy, and (d) after suturing.

drainage tube and closed the incision. The total operation time was 2 h 39 min, with 11 min of clamping.

A histopathological examination revealed clear cell carcinoma (grade 2, $\text{INF}\alpha$, $v[-]$, pT1a). The patient was discharged 11 days after surgery and has been free from recurrence for 43 months.

3. Discussion

Horseshoe kidney is a congenital abnormality in 1 of every 400 to 1000 individuals, and the incidence in men is twice compared with that in women. Horseshoe kidney is often seen in patients who have a chromosome disorder, with a rate of 7% in those with Turner syndrome [4]. Due to

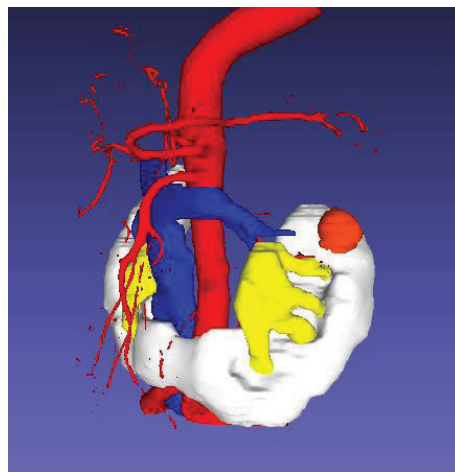


FIGURE 4: CT image of the tumor in the horseshoe kidney.

accompanying anatomical disorders, one-third of patients have renal stones or hydronephrosis due to stricture of the ureteropelvic junction [5, 6]. No association has been noted between horseshoe kidney and renal cell carcinoma, and only 200 cases have been published [7].

Laparoscopic surgery was recently reported in several cases of horseshoe kidney with isthmectomy, pyeloureteroplasty, nephrectomy, and partial nephrectomy [8, 9]. However, given the complicated vessel anatomy and poor mobility, surgical planning is difficult when a tumor arises in a horseshoe kidney. The tumor location was suggested as the most important factor influencing the selection of an intra- or retroperitoneal approach. Molina and Gill showed that an intraperitoneal approach was more appropriate for anterior to external areas, while a retroperitoneal approach was more appropriate for posterior to external areas [10]. In the present case, the tumor was located in the anterior-external area, so an intraperitoneal approach was selected. Using this approach, a large operation area was obtained, which helped reduce the surgical operation time; our suturing technique also helped shorten the operation by reducing the amount of bleeding [11]. We also constructed 3D images (OsiriX, Pixmeo; Bernex, Switzerland) to understand the anatomical structure more easily (Figure 4).

Thus far, four cases of laparoscopic partial nephrectomy for renal tumor in a horseshoe kidney have been reported. In previous cases, the surgical approach was determined by the tumor location. In these reports, 2 cases had renal cancer, and 1 case described in the literature showed no recurrence at 12 months postoperatively [12]. Our case remains free from recurrence at 43 months postoperatively with a preserved renal function.

4. Conclusion

We herein reported a case of renal cell carcinoma in a horseshoe kidney successfully treated by laparoscopic partial nephrectomy. Preoperative detailed planning using CT positively contributed to performing successful surgery.

Consent

Written informed consent was obtained from the patient.

Conflicts of Interest

The authors declare no conflicts of interest

Authors' Contributions

Shinji Ohtake, Go Noguchi, Noboru Nakaigawa, and Kazuhide Makiyama conceived and designed the experiments. Takashi Kawahara, Hiroji Uemura, and Masahiro Yao analyzed the data. Shinji Ohtake, Go Noguchi, Noboru Nakaigawa, Kimio Chiba, Masahiro Yao, and Kazuhide Makiyama performed the experiments. Shinji Ohtake and Kazuhide Makiyama wrote the paper.

Acknowledgments

This study was supported by KAKENHI (Grant no. 16K20152) from the Ministry of Education, Culture, Sports, Science and Technology of Japan and grant for 2016–2017 Research Development Fund (Grant no. WJ2810) of Yokohama City University.

References

- [1] Q. Ballouhey, A. Binet, P. Clermidi et al., "Partial nephrectomy for small children: robot-assisted versus open surgery," *International Journal of Urology*, vol. 24, no. 12, pp. 855–860, 2017.
- [2] A. Raman, T. Kuusk, E. R. Hyde, L. U. Berger, A. Bex, and F. Mumtaz, "Robotic-assisted laparoscopic partial nephrectomy in a horseshoe kidney. A case report and review of the literature," *Urology*, vol. 114, pp. e3–e5, 2018.
- [3] J. Zumsteg, W. W. Roberts, and J. S. Wolf Jr, "Laparoscopic heminephrectomy for benign renal anomalies," *Journal of Endourology*, vol. 24, no. 1, pp. 41–47, 2010.
- [4] B. Lippe, M. E. Geffner, R. B. Dietrich, M. I. Boechat, and H. Kangarloo, "Renal malformations in patients with Turner syndrome: imaging in 141 patients," *Pediatrics*, vol. 82, no. 6, pp. 852–856, 1988.
- [5] S. Strauss, T. Dushnitsky, A. Peer, H. Manor, E. Libson, and P. D. Lebensart, "Sonographic features of horseshoe kidney: review of 34 patients," *Journal of Ultrasound in Medicine*, vol. 19, no. 1, pp. 27–31, 2000.
- [6] S. Cascio, B. Sweeney, C. Granata, G. Piaggio, V. Jasonni, and P. Puri, "Vesicoureteral reflux and ureteropelvic junction obstruction in children with horseshoe kidney: treatment and outcome," *The Journal of Urology*, vol. 167, no. 6, pp. 2566–2568, 2002.
- [7] M. Petrovic, V. Andrejevic, L. Djurasic et al., "Tumors of the horseshoe kidney: characteristics and literature review," *Acta Chirurgica Iugoslavica*, vol. 59, no. 1, pp. 53–55, 2012.
- [8] T. Benidir, T. J. Coelho de Castilho, G. R. Cherubini, and M. de Almeida Luz, "Laparoscopic partial nephrectomy for renal cell carcinoma in a horseshoe kidney," *Canadian Urological Association Journal*, vol. 8, no. 11-12, pp. E918–E920, 2014.
- [9] C. H. Lee, Y. J. Park, J. Y. Ku, and H. K. Ha, "Clinical application of calculated split renal volume using computed tomography-based renal volumetry after partial nephrectomy: correlation with technetium-99m dimercaptosuccinic acid renal scan data," *International Journal of Urology*, vol. 24, no. 6, pp. 433–439, 2017.
- [10] W. R. Molina and I. S. Gill, "Laparoscopic partial nephrectomy in a horseshoe kidney," *Journal of Endourology*, vol. 17, no. 10, pp. 905–906, 2003.
- [11] K. Makiyama, N. Nakaigawa, Y. Miyoshi, T. Murakami, M. Yao, and Y. Kubota, "Improvement on parenchymal suturing technique in laparoscopic partial nephrectomy," *International Journal of Urology*, vol. 15, no. 9, pp. 854–855, 2008.
- [12] A. Tsivian, A. Shtricker, S. Benjamin, and A. A. Sidi, "Laparoscopic partial nephrectomy for tumour excision in a horseshoe kidney: part II," *European Urology*, vol. 51, no. 5, pp. 1433–1434, 2007.