

Acta Crystallographica Section E

Structure Reports

Online

ISSN 1600-5368

(E)-2-Hydroxy-4-methoxy-3-(3-methylbut-2-enyl)-6-styrylbenzoic acid

Xingyue Ji, Jie Jin, Guanghui Zheng and Zhuorong Li*

 Institute of Medicinal Biotechnology, Chinese Academy of Medical Sciences and Peking Union Medical College, Beijing 100050, People's Republic of China
 Correspondence e-mail: l-z-r@263.net

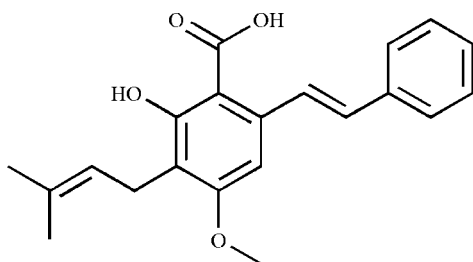
Received 28 November 2012; accepted 10 December 2012

 Key indicators: single-crystal X-ray study; $T = 298$ K; mean $\sigma(\text{C}-\text{C}) = 0.005$ Å; R factor = 0.052; wR factor = 0.152; data-to-parameter ratio = 13.7.

The title compound, $\text{C}_{21}\text{H}_{22}\text{O}_4$, also known as cajanine, features an intramolecular $\text{O}-\text{H}\cdots\text{O}$ hydrogen bond between the adjacent carboxy and hydroxy groups. The benzene rings make an interplanar angle of $175.4(2)^\circ$. In the crystal, molecules are linked by pairs of $\text{O}-\text{H}\cdots\text{O}$ hydrogen bonds, forming inversion dimers.

Related literature

Cajanine is an important component of the herb *Cajanus cajan* L., which is used in traditional Chinese medicine to treat osteonecrosis of the femoral head. For the total synthesis of cajanine, see: Ji *et al.* (2011). For the bioactivity of cajanine, see: Fu *et al.* (2009); Ji *et al.* (2011); Luo *et al.* (2008a,b); Zheng *et al.* (2007a,b); Inman & Hopp (2002); Ruan *et al.* (2009).



Experimental

Crystal data

$\text{C}_{21}\text{H}_{22}\text{O}_4$
 $M_r = 338.39$
 Triclinic, $P\bar{1}$
 $a = 6.9790(3)$ Å
 $b = 9.9975(8)$ Å

$c = 13.8202(11)$ Å
 $\alpha = 77.899(1)^\circ$
 $\beta = 78.956(2)^\circ$
 $\gamma = 78.507(2)^\circ$
 $V = 912.58(11)$ Å³

$Z = 2$
 Mo $K\alpha$ radiation
 $\mu = 0.08$ mm⁻¹

$T = 298$ K
 $0.35 \times 0.32 \times 0.31$ mm

Data collection

Bruker SMART APEX
 diffractometer
 4547 measured reflections

3138 independent reflections
 1735 reflections with $I > 2\sigma(I)$
 $R_{\text{int}} = 0.024$

Refinement

$R[F^2 > 2\sigma(F^2)] = 0.052$
 $wR(F^2) = 0.152$
 $S = 1.06$
 3138 reflections

229 parameters
 H-atom parameters constrained
 $\Delta\rho_{\text{max}} = 0.15$ e Å⁻³
 $\Delta\rho_{\text{min}} = -0.18$ e Å⁻³

Table 1

Hydrogen-bond geometry (Å, °).

$D-H\cdots A$	$D-H$	$H\cdots A$	$D\cdots A$	$D-H\cdots A$
$\text{O1}-\text{H1}\cdots\text{O2}^i$	0.82	1.85	2.667(2)	176
$\text{O3}-\text{H3}\cdots\text{O2}$	0.82	1.82	2.546(2)	147

 Symmetry code: (i) $-x + 2, -y + 1, -z + 1$.

Data collection: *SMART* (Bruker, 1999); cell refinement: *SAINTE* (Bruker, 1999); data reduction: *SAINTE*; program(s) used to solve structure: *SHELXS97* (Sheldrick, 2008); program(s) used to refine structure: *SHELXL97* (Sheldrick, 2008); molecular graphics: *SHELXTL* (Sheldrick 2008); software used to prepare material for publication: *SHELXTL*.

This work was supported by the National S&T Major Special Project on Major New Drug Innovation (2012ZX09301002-001). We also thank Professor Su-na Wang at Liaocheng University for assistance with the crystallography and help with the X-ray experiment.

Supplementary data and figures for this paper are available from the IUCr electronic archives (Reference: NG5309).

References

- Bruker (1999). *SAINTE* and *SMART*. Bruker AXS Inc., Madison, Wisconsin, USA.
- Fu, Y.-J., Zhu, Y.-G., Wu, N., Kong, Y., Liu, W. & Hua, X. (2009). Chin. Patent CN 101485649.
- Inman, W. D. & Hopp, D. C. (2002). US Patent 20020058701A1.
- Ji, X.-Y., Xue, S.-T., Zheng, G.-H., Han, Y.-X., Liu, Z.-Y., Jiang, J.-D. & Li, Z.-R. (2011). *Acta. Pharm. Sin. B*, **1**, 93–99.
- Luo, Q.-F., Sun, L., Si, J.-Y. & Chen, D.-H. (2008a). *Phytomedicine*, **15**, 932–939.
- Luo, Q.-F., Sun, L., Si, J.-Y., Chen, D.-H. & Du, G.-H. (2008b). *Yao Xue Xue Bao*, **43**, 145–149.
- Ruan, C.-J., Si, J.-Y., Zhang, L., Chen, D.-H., Du, G.-H. & Sun, L. (2009). *Neurosci. Lett.* **467**, 159–63.
- Sheldrick, G. M. (2008). *Acta Cryst.* **A64**, 112–122.
- Zheng, Y.-Y., Yang, J., Chen, D.-H. & Sun, L. (2007a). *Yao Xue Xue Bao*, **42**, 386–391.
- Zheng, Y.-Y., Yang, J., Chen, D.-H. & Sun, L. (2007b). *Yao Xue Xue Bao*, **42**, 562–565.

supplementary materials

Acta Cryst. (2013). E69, o91 [doi:10.1107/S1600536812050258]

(E)-2-Hydroxy-4-methoxy-3-(3-methylbut-2-enyl)-6-styrylbenzoic acid**Xingyue Ji, Jie Jin, Guanghui Zheng and Zhuorong Li****Comment**

Cajanine, also known as longistylineA-2-carboxylicacid, is a stilbene derivative isolated from the herb *Cajanus cajan* L. The herb has been used in traditional Chinese medicine for many years to treat osteonecrosis of the femoralhead. Cajanine is a good drug candidate because of its wide range of pharmacological activities, which include antitumor (Ji *et al.* 2011), anti- HSV (Fu *et al.* 2009), anti-hyperlipidemic (Luo *et al.*, 2008a), anti-osteoporotic (Zheng *et al.*, 2007a,b), hypoglycemic (Inman & Hopp, 2002) and antioxidant (Luo *et al.*, 2008b) effects. It was also reported that cajanine can modulate A β_{25-35} -induced cognitive deficits, oxidative stress and cholinergic dysfunction in mice (Ruan *et al.*, 2009). We have accomplished its total synthesis previously (Ji *et al.* 2011), and the bioassay results showed that it showed some antiproliferative activity against human hepatoma cells.

The crystal structure of the title compound is reported here. In this crystal, the two benzene rings are not in the same plane, and the interplanar angle between them is 175.4 (2) °. A strong intramolecular O—H \cdots O hydrogen bond is formed between the carboxyl group and a hydroxy group.

Experimental

(E)-Methyl 2-hydroxy-4-methoxy-3-(3-methylbut-2-enyl)-6-styrylbenzoate (0.5 g, 1.42 mmol) was dissolved in EtOH/H₂O (15 ml/5 ml) and KOH (0.25 g, 4.26 mmol) was added. The mixture was heated under reflux for 3 h, and the reaction mixture was then added into ice water (50 ml) and the pH was adjusted to 2 with 10% HCl. The precipitate obtained was filtered and washed with water, dried in vacuum. The crude product was recrystallized from ethyl acetate / petroleum ether to give colorless crystals (0.38 g, 80%). m.p.168–170 °C.

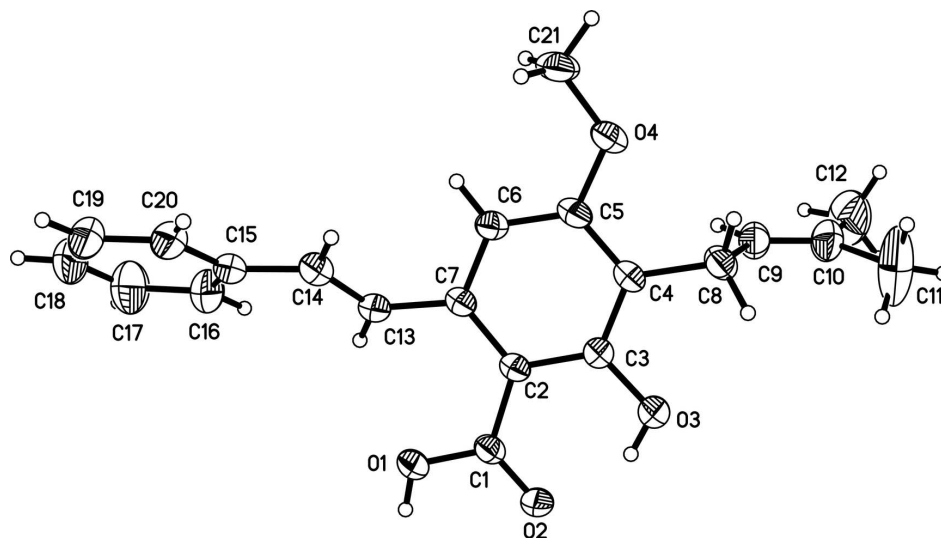
¹H NMR(400 MHz,CDCl₃, 25 °C, TMS) δ : 11.58(s, 1H), 7.81(d, J = 16.0 Hz, 1H), 7.52(d, J = 7.2 Hz, 2H),7.38(t, J = 7.2 Hz,2H), 7.28(t, J = 7.2 Hz, 1H), 6.83(d, J = 16.0 Hz, 1H), 6.65(s, 1H), 5.22(t, J = 6.8 Hz, 1H), 3.95(s, 3H), 3.38(d, J = 6.8 Hz, 2H), 1.79(s, 3H), 1.68 (s, 3H), COOH was not observed. ¹³C NMR(100 MHz, CDCl₃) δ : 174.95, 162.44, 162.25, 141.77, 137.28, 131.97, 130.86, 130.34, 128.74, 127.89, 126.79, 121.89, 116.77, 103.29, 102.97, 55.73, 25.82, 22.09, 17.80. HRMS(ESI) calcd for C₂₁H₂₂O₄Na [M +Na]⁺ 361.14158, found 361.14318.

Refinement

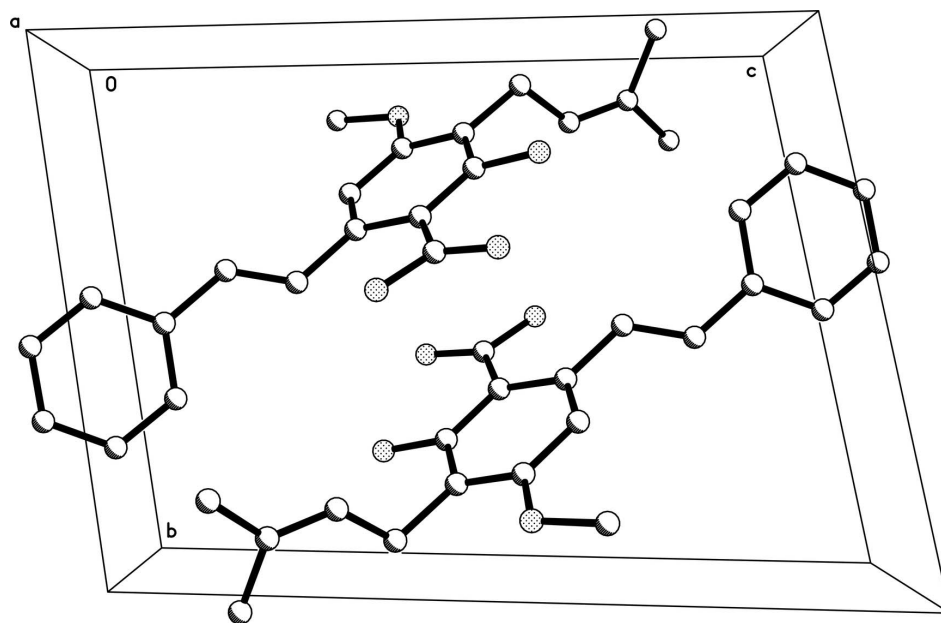
Hydrogens were generated geometrically.

Computing details

Data collection: *SMART* (Bruker, 1999); cell refinement: *SAINTE* (Bruker, 1999); data reduction: *SAINTE* (Bruker, 1999); program(s) used to solve structure: *SHELXS97* (Sheldrick, 2008); program(s) used to refine structure: *SHELXL97* (Sheldrick, 2008); molecular graphics: *SHELXTL* (Sheldrick 2008); software used to prepare material for publication: *SHELXTL* (Sheldrick 2008).


Figure 1

The title molecule with the atom-numbering scheme. Displacement parameters are shown at the 30% probability level.


Figure 2

Packing of the title molecules viewed along the a direction.

(*E*)-2-Hydroxy-4-methoxy-3-(3-methylbut-2-enyl)-6-styrylbenzoic acid

Crystal data

$C_{21}H_{22}O_4$

$M_r = 338.39$

Triclinic, $P1$

$a = 6.9790$ (3) Å

$b = 9.9975$ (8) Å

$c = 13.8202$ (11) Å

$\alpha = 77.899$ (1)°

$\beta = 78.956$ (2)°

$\gamma = 78.507$ (2)°

$V = 912.58$ (11) Å³

$Z = 2$

$F(000) = 360$

$D_x = 1.231$ Mg m⁻³

Mo $K\alpha$ radiation, $\lambda = 0.71073$ Å

Cell parameters from 1203 reflections
 $\theta = 2.8\text{--}25.6^\circ$
 $\mu = 0.08\text{ mm}^{-1}$

$T = 298\text{ K}$
 Lump, colorless
 $0.35 \times 0.32 \times 0.31\text{ mm}$

Data collection

Bruker SMART APEX
 diffractometer
 Radiation source: fine-focus sealed tube
 Graphite monochromator
 ω scans
 4547 measured reflections
 3138 independent reflections

1735 reflections with $I > 2\sigma(I)$
 $R_{\text{int}} = 0.024$
 $\theta_{\text{max}} = 25.0^\circ$, $\theta_{\text{min}} = 3.0^\circ$
 $h = -8 \rightarrow 8$
 $k = -11 \rightarrow 11$
 $l = -16 \rightarrow 12$

Refinement

Refinement on F^2
 Least-squares matrix: full
 $R[F^2 > 2\sigma(F^2)] = 0.052$
 $wR(F^2) = 0.152$
 $S = 1.06$
 3138 reflections
 229 parameters
 0 restraints
 Primary atom site location: structure-invariant
 direct methods

Secondary atom site location: difference Fourier
 map
 Hydrogen site location: inferred from
 neighbouring sites
 H-atom parameters constrained
 $w = 1/[\sigma^2(F_o^2) + (0.057P)^2 + 0.0883P]$
 where $P = (F_o^2 + 2F_c^2)/3$
 $(\Delta/\sigma)_{\text{max}} = 0.001$
 $\Delta\rho_{\text{max}} = 0.15\text{ e \AA}^{-3}$
 $\Delta\rho_{\text{min}} = -0.18\text{ e \AA}^{-3}$

Special details

Geometry. All e.s.d.'s (except the e.s.d. in the dihedral angle between two l.s. planes) are estimated using the full covariance matrix. The cell e.s.d.'s are taken into account individually in the estimation of e.s.d.'s in distances, angles and torsion angles; correlations between e.s.d.'s in cell parameters are only used when they are defined by crystal symmetry. An approximate (isotropic) treatment of cell e.s.d.'s is used for estimating e.s.d.'s involving l.s. planes.

Refinement. Refinement of F^2 against ALL reflections. The weighted R -factor wR and goodness of fit S are based on F^2 , conventional R -factors R are based on F , with F set to zero for negative F^2 . The threshold expression of $F^2 > \sigma(F^2)$ is used only for calculating R -factors(gt) etc. and is not relevant to the choice of reflections for refinement. R -factors based on F^2 are statistically about twice as large as those based on F , and R -factors based on ALL data will be even larger.

Fractional atomic coordinates and isotropic or equivalent isotropic displacement parameters (\AA^2)

	<i>x</i>	<i>y</i>	<i>z</i>	$U_{\text{iso}}^*/U_{\text{eq}}$
O1	0.8842 (3)	0.47521 (18)	0.39744 (12)	0.0647 (5)
H1	0.9635	0.5150	0.4123	0.097*
O2	0.8460 (3)	0.39954 (17)	0.56073 (13)	0.0578 (5)
O3	0.6238 (3)	0.21943 (17)	0.64005 (12)	0.0622 (5)
H3	0.7100	0.2662	0.6362	0.093*
O4	0.1871 (3)	0.12244 (19)	0.45984 (13)	0.0699 (6)
C1	0.7933 (3)	0.4066 (2)	0.47912 (19)	0.0460 (6)
C2	0.6332 (3)	0.3384 (2)	0.46785 (17)	0.0425 (6)
C3	0.5566 (3)	0.2451 (2)	0.55136 (17)	0.0460 (6)
C4	0.4102 (3)	0.1710 (2)	0.54695 (18)	0.0474 (6)
C5	0.3353 (4)	0.1946 (3)	0.45837 (19)	0.0508 (7)
C6	0.4050 (4)	0.2864 (2)	0.37512 (18)	0.0500 (6)
H6	0.3517	0.2992	0.3165	0.060*
C7	0.5533 (3)	0.3596 (2)	0.37766 (17)	0.0442 (6)

C8	0.3312 (4)	0.0732 (3)	0.63820 (18)	0.0568 (7)
H8A	0.2964	-0.0038	0.6164	0.068*
H8B	0.4356	0.0358	0.6786	0.068*
C9	0.1559 (4)	0.1381 (3)	0.7015 (2)	0.0639 (8)
H9	0.0923	0.2237	0.6723	0.077*
C10	0.0802 (5)	0.0907 (3)	0.7923 (2)	0.0786 (9)
C11	0.1714 (8)	-0.0452 (5)	0.8471 (3)	0.170 (2)
H11A	0.1457	-0.1193	0.8198	0.255*
H11B	0.1155	-0.0549	0.9168	0.255*
H11C	0.3118	-0.0485	0.8400	0.255*
C12	-0.0985 (6)	0.1646 (4)	0.8487 (3)	0.1287 (15)
H12A	-0.1369	0.2547	0.8104	0.193*
H12B	-0.0693	0.1745	0.9117	0.193*
H12C	-0.2048	0.1124	0.8603	0.193*
C13	0.6113 (4)	0.4597 (3)	0.28730 (18)	0.0516 (7)
H13	0.6350	0.5444	0.2960	0.062*
C14	0.6320 (4)	0.4374 (3)	0.1946 (2)	0.0628 (8)
H14	0.6173	0.3498	0.1874	0.075*
C15	0.6759 (4)	0.5363 (4)	0.1019 (2)	0.0683 (8)
C16	0.6483 (5)	0.6766 (4)	0.1000 (2)	0.0940 (11)
H16	0.6044	0.7111	0.1593	0.113*
C17	0.6849 (7)	0.7665 (5)	0.0111 (3)	0.1376 (17)
H17	0.6664	0.8613	0.0107	0.165*
C18	0.7484 (8)	0.7173 (7)	-0.0768 (4)	0.139 (2)
H18	0.7703	0.7791	-0.1367	0.167*
C19	0.7796 (6)	0.5793 (7)	-0.0771 (3)	0.1203 (17)
H19	0.8273	0.5457	-0.1366	0.144*
C20	0.7398 (5)	0.4888 (4)	0.0121 (2)	0.0903 (11)
H20	0.7564	0.3943	0.0116	0.108*
C21	0.1162 (4)	0.1248 (3)	0.3689 (2)	0.0719 (8)
H21A	0.0509	0.2167	0.3455	0.108*
H21B	0.0245	0.0610	0.3810	0.108*
H21C	0.2257	0.0983	0.3191	0.108*

Atomic displacement parameters (\AA^2)

	U^{11}	U^{22}	U^{33}	U^{12}	U^{13}	U^{23}
O1	0.0679 (12)	0.0791 (13)	0.0572 (11)	-0.0449 (10)	-0.0144 (9)	0.0008 (10)
O2	0.0604 (12)	0.0644 (12)	0.0567 (11)	-0.0276 (9)	-0.0195 (9)	-0.0032 (9)
O3	0.0674 (12)	0.0704 (12)	0.0540 (11)	-0.0300 (10)	-0.0169 (9)	0.0021 (9)
O4	0.0663 (13)	0.0852 (14)	0.0689 (13)	-0.0438 (11)	-0.0076 (10)	-0.0106 (10)
C1	0.0412 (15)	0.0437 (15)	0.0537 (16)	-0.0126 (12)	-0.0063 (13)	-0.0060 (12)
C2	0.0386 (14)	0.0433 (14)	0.0484 (14)	-0.0123 (11)	-0.0041 (11)	-0.0114 (11)
C3	0.0459 (15)	0.0477 (15)	0.0452 (14)	-0.0110 (12)	-0.0071 (12)	-0.0068 (12)
C4	0.0431 (15)	0.0463 (15)	0.0539 (15)	-0.0160 (12)	-0.0011 (12)	-0.0089 (12)
C5	0.0436 (15)	0.0542 (16)	0.0600 (16)	-0.0195 (13)	-0.0015 (13)	-0.0171 (13)
C6	0.0474 (15)	0.0564 (16)	0.0513 (15)	-0.0165 (13)	-0.0098 (12)	-0.0119 (13)
C7	0.0400 (14)	0.0453 (14)	0.0491 (14)	-0.0129 (11)	-0.0039 (11)	-0.0103 (12)
C8	0.0527 (17)	0.0517 (16)	0.0648 (17)	-0.0180 (13)	-0.0067 (14)	-0.0014 (13)
C9	0.0547 (18)	0.0699 (19)	0.0581 (18)	-0.0097 (15)	-0.0068 (14)	0.0062 (15)

C10	0.085 (2)	0.092 (2)	0.0524 (18)	-0.0209 (19)	-0.0035 (17)	0.0007 (17)
C11	0.214 (5)	0.129 (4)	0.099 (3)	0.012 (4)	0.032 (3)	0.041 (3)
C12	0.112 (3)	0.169 (4)	0.081 (3)	-0.009 (3)	0.022 (2)	-0.016 (3)
C13	0.0487 (16)	0.0574 (16)	0.0534 (16)	-0.0189 (13)	-0.0129 (12)	-0.0063 (13)
C14	0.0596 (18)	0.075 (2)	0.0587 (18)	-0.0266 (15)	-0.0070 (14)	-0.0099 (15)
C15	0.0539 (18)	0.102 (3)	0.0540 (18)	-0.0332 (17)	-0.0130 (14)	-0.0010 (17)
C16	0.110 (3)	0.101 (3)	0.068 (2)	-0.039 (2)	-0.0156 (19)	0.015 (2)
C17	0.161 (4)	0.140 (4)	0.099 (3)	-0.062 (3)	-0.025 (3)	0.045 (3)
C18	0.124 (4)	0.208 (6)	0.077 (3)	-0.080 (4)	-0.030 (3)	0.055 (4)
C19	0.085 (3)	0.221 (5)	0.055 (2)	-0.051 (4)	-0.0123 (19)	0.001 (3)
C20	0.075 (2)	0.145 (3)	0.056 (2)	-0.038 (2)	-0.0091 (16)	-0.014 (2)
C21	0.0644 (19)	0.083 (2)	0.085 (2)	-0.0313 (16)	-0.0194 (16)	-0.0250 (17)

Geometric parameters (Å, °)

O1—C1	1.312 (3)	C11—H11A	0.9600
O1—H1	0.8200	C11—H11B	0.9600
O2—C1	1.236 (3)	C11—H11C	0.9600
O3—C3	1.352 (3)	C12—H12A	0.9600
O3—H3	0.8200	C12—H12B	0.9600
O4—C5	1.368 (3)	C12—H12C	0.9600
O4—C21	1.430 (3)	C13—C14	1.322 (3)
C1—C2	1.467 (3)	C13—H13	0.9300
C2—C3	1.414 (3)	C14—C15	1.467 (4)
C2—C7	1.420 (3)	C14—H14	0.9300
C3—C4	1.393 (3)	C15—C16	1.372 (4)
C4—C5	1.379 (3)	C15—C20	1.384 (4)
C4—C8	1.511 (3)	C16—C17	1.375 (4)
C5—C6	1.387 (3)	C16—H16	0.9300
C6—C7	1.391 (3)	C17—C18	1.367 (6)
C6—H6	0.9300	C17—H17	0.9300
C7—C13	1.472 (3)	C18—C19	1.354 (6)
C8—C9	1.482 (4)	C18—H18	0.9300
C8—H8A	0.9700	C19—C20	1.384 (5)
C8—H8B	0.9700	C19—H19	0.9300
C9—C10	1.294 (4)	C20—H20	0.9300
C9—H9	0.9300	C21—H21A	0.9600
C10—C12	1.487 (4)	C21—H21B	0.9600
C10—C11	1.494 (5)	C21—H21C	0.9600
C1—O1—H1	109.5	C10—C11—H11C	109.5
C3—O3—H3	109.5	H11A—C11—H11C	109.5
C5—O4—C21	119.8 (2)	H11B—C11—H11C	109.5
O2—C1—O1	120.0 (2)	C10—C12—H12A	109.5
O2—C1—C2	122.9 (2)	C10—C12—H12B	109.5
O1—C1—C2	117.1 (2)	H12A—C12—H12B	109.5
C3—C2—C7	118.5 (2)	C10—C12—H12C	109.5
C3—C2—C1	117.8 (2)	H12A—C12—H12C	109.5
C7—C2—C1	123.7 (2)	H12B—C12—H12C	109.5
O3—C3—C4	115.6 (2)	C14—C13—C7	124.5 (2)

O3—C3—C2	122.2 (2)	C14—C13—H13	117.8
C4—C3—C2	122.2 (2)	C7—C13—H13	117.8
C5—C4—C3	117.8 (2)	C13—C14—C15	126.9 (3)
C5—C4—C8	121.7 (2)	C13—C14—H14	116.6
C3—C4—C8	120.5 (2)	C15—C14—H14	116.6
O4—C5—C4	115.0 (2)	C16—C15—C20	118.1 (3)
O4—C5—C6	123.2 (2)	C16—C15—C14	122.2 (3)
C4—C5—C6	121.7 (2)	C20—C15—C14	119.6 (3)
C5—C6—C7	121.3 (2)	C15—C16—C17	120.5 (4)
C5—C6—H6	119.4	C15—C16—H16	119.7
C7—C6—H6	119.4	C17—C16—H16	119.7
C6—C7—C2	118.5 (2)	C18—C17—C16	120.4 (5)
C6—C7—C13	117.4 (2)	C18—C17—H17	119.8
C2—C7—C13	124.0 (2)	C16—C17—H17	119.8
C9—C8—C4	114.1 (2)	C19—C18—C17	120.4 (4)
C9—C8—H8A	108.7	C19—C18—H18	119.8
C4—C8—H8A	108.7	C17—C18—H18	119.8
C9—C8—H8B	108.7	C18—C19—C20	119.2 (4)
C4—C8—H8B	108.7	C18—C19—H19	120.4
H8A—C8—H8B	107.6	C20—C19—H19	120.4
C10—C9—C8	128.2 (3)	C19—C20—C15	121.3 (4)
C10—C9—H9	115.9	C19—C20—H20	119.4
C8—C9—H9	115.9	C15—C20—H20	119.4
C9—C10—C12	123.6 (3)	O4—C21—H21A	109.5
C9—C10—C11	120.6 (3)	O4—C21—H21B	109.5
C12—C10—C11	115.8 (3)	H21A—C21—H21B	109.5
C10—C11—H11A	109.5	O4—C21—H21C	109.5
C10—C11—H11B	109.5	H21A—C21—H21C	109.5
H11A—C11—H11B	109.5	H21B—C21—H21C	109.5
O2—C1—C2—C3	-9.3 (3)	C3—C2—C7—C6	-0.8 (3)
O1—C1—C2—C3	169.4 (2)	C1—C2—C7—C6	178.3 (2)
O2—C1—C2—C7	171.6 (2)	C3—C2—C7—C13	176.3 (2)
O1—C1—C2—C7	-9.7 (3)	C1—C2—C7—C13	-4.6 (4)
C7—C2—C3—O3	-179.7 (2)	C5—C4—C8—C9	-86.0 (3)
C1—C2—C3—O3	1.1 (3)	C3—C4—C8—C9	91.3 (3)
C7—C2—C3—C4	1.8 (3)	C4—C8—C9—C10	-165.1 (3)
C1—C2—C3—C4	-177.4 (2)	C8—C9—C10—C12	-179.4 (3)
O3—C3—C4—C5	179.4 (2)	C8—C9—C10—C11	0.7 (6)
C2—C3—C4—C5	-2.1 (3)	C6—C7—C13—C14	-41.1 (3)
O3—C3—C4—C8	1.9 (3)	C2—C7—C13—C14	141.8 (3)
C2—C3—C4—C8	-179.5 (2)	C7—C13—C14—C15	175.4 (2)
C21—O4—C5—C4	-171.9 (2)	C13—C14—C15—C16	-18.2 (5)
C21—O4—C5—C6	8.9 (4)	C13—C14—C15—C20	164.4 (3)
C3—C4—C5—O4	-177.8 (2)	C20—C15—C16—C17	-0.5 (5)
C8—C4—C5—O4	-0.4 (3)	C14—C15—C16—C17	-177.9 (3)
C3—C4—C5—C6	1.4 (4)	C15—C16—C17—C18	0.4 (6)
C8—C4—C5—C6	178.8 (2)	C16—C17—C18—C19	-1.3 (8)
O4—C5—C6—C7	178.7 (2)	C17—C18—C19—C20	2.3 (7)

C4—C5—C6—C7	-0.4 (4)	C18—C19—C20—C15	-2.4 (6)
C5—C6—C7—C2	0.1 (3)	C16—C15—C20—C19	1.5 (5)
C5—C6—C7—C13	-177.2 (2)	C14—C15—C20—C19	179.0 (3)

Hydrogen-bond geometry (Å, °)

<i>D</i> —H \cdots <i>A</i>	<i>D</i> —H	H \cdots <i>A</i>	<i>D</i> \cdots <i>A</i>	<i>D</i> —H \cdots <i>A</i>
O1—H1 \cdots O2 ⁱ	0.82	1.85	2.667 (2)	176
O3—H3 \cdots O2	0.82	1.82	2.546 (2)	147

Symmetry code: (i) $-x+2, -y+1, -z+1$.