



Nest Site Selection by Kentish Plover Suggests a Trade-Off between Nest-Crypsis and Predator Detection Strategies

Miguel Ángel Gómez-Serrano*, Pascual López-López

Vertebrates Zoology Research Group, CIBIO Research Institute, University of Alicante, Alicante, Spain

Abstract

Predation is one of the main causes of adult mortality and breeding failure for ground-nesting birds. Micro-habitat structure around nests plays a critical role in minimizing predation risk. Plovers nest in sites with little vegetation cover to maximize the incubating adult visibility, but many studies suggest a trade-off between nest-crypsis and predator detection strategies. However, this trade-off has not been explored in detail because methods used so far do not allow estimating the visibility with regards to critical factors such as slope or plant permeability to vision. Here, we tested the hypothesis that Kentish plovers select exposed sites according to a predator detection strategy, and the hypothesis that more concealed nests survive longer according to a crypsis strategy. To this end, we obtained an accurate estimation of the incubating adult's field of vision through a custom built inverted periscope. Our results showed that plovers selected nest sites with higher visibility than control points randomly selected with regards to humans and dogs, although nests located in sites with higher vegetation cover survived longer. In addition, the flushing distance (i.e., the distance at which incubating adults leave the nest when they detect a potential predator) decreased with vegetation cover. Consequently, the advantages of concealing the nest were limited by the ability to detect predators, thus indirectly supporting the existence of the trade-off between crypsis and predator detection. Finally, human disturbance also constrained nest choice, forcing plovers to move to inland sites that were less suitable because of higher vegetation cover, and modulated flushing behavior, since plovers that were habituated to humans left their nests closer to potential predators. This constraint on the width of suitable breeding habitat is particularly relevant for the conservation of Kentish Plover in sand beaches, especially under the current context of coastal regression and increase of recreational activities.

Citation: Gómez-Serrano MÁ, López-López P (2014) Nest Site Selection by Kentish Plover Suggests a Trade-Off between Nest-Crypsis and Predator Detection Strategies. PLoS ONE 9(9): e107121. doi:10.1371/journal.pone.0107121

Editor: Daniel Osorio, University of Sussex, United Kingdom

Received: June 9, 2014; **Accepted:** August 12, 2014; **Published:** September 10, 2014

Copyright: © 2014 Gómez-Serrano, López-López. This is an open-access article distributed under the terms of the Creative Commons Attribution License, which permits unrestricted use, distribution, and reproduction in any medium, provided the original author and source are credited.

Data Availability: The authors confirm that all data underlying the findings are fully available without restriction. All relevant data are within the paper and its Supporting Information files.

Funding: Our work received partial funding only during the years 2000 and 2001 by the Conselleria de Infraestructuras, Territorio y Medio Ambiente (Generalitat Valenciana; www.citma.gva.es). PLL is supported by a "Juan de la Cierva" postdoctoral grant of the Spanish Ministry of Economy and Competitiveness (http://www.mineco.gob.es/) (reference JCI-2011-09588). The funders had no role in study design, data collection and analysis, decision to publish, or preparation of the manuscript.

Competing Interests: The authors have declared that no competing interests exist.

* Email: miguel.gomez@uv.es

Introduction

Predation is the main cause of breeding failure for ground-nesting birds [1] and one of the most important causes of adult mortality, particularly during incubation [2]. Mortality of adults eliminates all future reproductive opportunities and hence, birds have been suggested to maximize lifetime and reproductive success through the achievement of an optimal balance between reproduction and predator avoidance [3]. Thus, birds particularly vulnerable to predation during reproduction, such as ground-nesting species, tend to produce abundant offspring and employ strategies to minimize the risk of adult and egg predation [4,5,6].

Predation risk on adults and eggs can be minimized through an adequate nest choice, particularly in ground-nesting species. In fact, micro-habitat structure and the degree of concealment, play a critical role in determining nest fate against predators [2,7]. Predation avoidance is achieved through two different nesting strategies amongst shorebirds [8]. While some species employ a

crypsis strategy based on nesting in habitats with dense and tall vegetation as a way to camouflage clutches against predation [e.g. 9,10], others use a predator detection strategy, based on breeding in open habitats so as to increase the visibility of incubating adults and the early detection of predators [8]. Most studies of nest site selection of plovers show evidence for the second strategy [11–15]. Nevertheless, other studies suggest a trade-off between nest crypsis and the ability of incubating adults to detect predators [7,16–18].

Kentish Plover (*Charadrius alexandrinus*) may breed in different habitats throughout its range, including coastal beaches, river gravel and sand bars, salt pans, and salt flats [11,19,20]. Despite this apparent plasticity, plovers nest almost exclusively on exposed sites in sparsely vegetated areas [11,13,14,21–23].

The relationship between vegetation cover and visibility from nests has received some attention so far [2,15,24]. However, the trade-off between nest crypsis and predator detection has not been explored in detail, mainly because the methods used do not allow estimating the actual view of the surroundings from the nest by the

incubating adult. In particular, most analyses of nest site selection have been undertaken at small spatial scales (usually ≤ 1 m from the nest) [13,25,26], and have not taken into account, the fact that vegetation may be permeable to vision. However, both aspects (i.e., spatial scale and visual permeability) are critical to assess nest site selection in relation to predation risk.

Here we analyze micro-habitat nest site selection by Kentish Plovers breeding on sandy beaches and examine the influence of vegetation cover on nest survival. To this end, we estimated the visibility of incubating adults with regard to vegetation and ground relief. Specific goals were to examine: (1) whether nest site choice was dependent on visibility, taking into account the detectability of predators; (2) the impact of nest-site selection on nest success; and (3) nest-site selection patterns relative to human disturbance. If a trade-off between nest crypsis and predator detection strategies exist, we predict that nest success should be higher in concealed sites as a result of lower predation rate on eggs and moreover birds should select nest sites with higher visibility than random sites in order to maximize predator detection.

Materials and Methods

Study species

Kentish Plover is a ground nesting shorebird distributed along Eurasia and Africa [27]. Recently, European and American populations of the nominal species (*Charadrius alexandrinus*) have been split into two different species, the Kentish Plover in Eurasia and Africa, and the Snowy Plover (*Charadrius nivosus*) in the Americas [28]. Despite the fact that the Kentish Plover is declining, the species is not globally threatened and is listed as Least Concern worldwide according to IUCN red list [27]. It is listed as vulnerable in Spain [29]. At regional level, in our study area, it is listed as a threatened species since 2013. Along the Mediterranean coast of Spain, its population decline is attributed, at least partially, to habitat degradation associated with the increase of human disturbance [19,29,30]. Sandy beaches are an important natural breeding habitat for Kentish Plover, but are usually valued by humans for recreation. Human disturbance on sandy beaches may affect breeding success or force birds to nest in alternative habitats [31].

Ethics statement

Corresponding permissions were granted by the Spanish Regional Administration "Conselleria de Infraestructuras, Territorio y Medio Ambiente" (permit 078/07), and the Devesa-Albufera Service of city council of Valencia facilitated access to the Punta Beach reserve (Albufera Natural Park). According to the Spanish law "Ley 42/2007 de 13 de diciembre del Patrimonio Natural y la Biodiversidad" an ethical approval is not required for this study. This paper complies with the current laws in Spain.

Study area

We sampled three beaches in the Castellón and Valencia provinces (Eastern Spain; Fig. 1): Serradal (Castellón de la Plana, 40° 00' N, 0° 01' E), Almenara (39° 43' N, 0° 11' W) and Punta (Valencia 39° 18' N, 0° 17' W). All three beaches have natural dune vegetation. Punta (1.2 km in length) and Serradal (1.1 km) are natural sandy beaches. Almenara (2.3 km in length) is a natural beach of mixed sandy areas with gravel and pebbles. The three beaches benefit from different types of legal protection according to European and regional legislation. In these sites Kentish plovers nest primarily on embryonic shifting dunes and annual vegetation of drift lines, but also in grasslands of small annual plants that grow on deep sand areas among dry interdunal

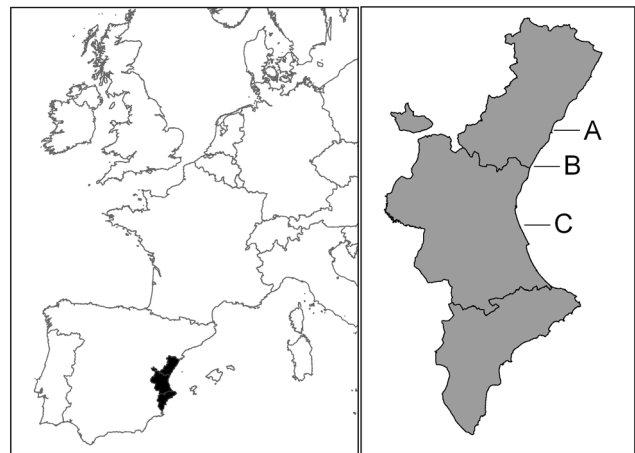


Figure 1. Study area. From left to right, Serradal (A), Almenara (B) and Punta (C) beaches are shown. Upper right inset map shows the Valencian Community in Western Europe. The exact location of the three beaches are shown in the inset map below. doi:10.1371/journal.pone.0107121.g001

depressions. Dominant species of these habitats include *Elymus farctus*, *Ammophila arenaria*, *Medicago marina*, *Lotus creticus*, *Otanthus maritimus*, *Pancratium maritimum*, *Sporobolus pungens* and *Cakile maritima*.

The three beaches are subject to a different intensity of human disturbance. Serradal is a beach frequented by people for leisure (>10 people/km/hour; authors' unpubl. data). Almenara has an intermediate level of human disturbance, with lower human presence with regard to Serradal (1–5 people/km/hour; authors' unpubl. data). Finally, Punta is a bird sanctuary with restricted access, where human use is almost negligible (managers and occasionally trespassers).

Field procedure

This study was conducted during two different periods. Firstly, research was carried out on Serradal between 1992 and 2001 during each breeding season; secondly, between 2007 and 2008 in the three study areas simultaneously. The same observer recorded all data across study areas and years.

Kentish plover nests were located by systematically combing beaches and dune systems on foot from early March to late July. Most clutches were located following the density of plovers' footprints on the sand, generally in sites where incubating adults were seen flushing the nests or displaying distraction behavior (simulation of incubating, potentially injured bird, etc.) in the vicinity of nests.

Once a nest was found, it was individually marked and visited every 3–5 days to measure clutch size and nest fate. There were no differences in the rates of nest visits across years and study sites. We marked each egg so as to identify it during subsequent visits and to record egg-turning activity.

We assessed laying date according to clutch size and laying interval for Kentish Plover [32,33]. We assumed that nests with one egg had been initiated the same day they were encountered, whereas those with two eggs and a third one observed in the following visit were considered to have been started the day before. Laying date in nests with complete clutches (i.e. with three eggs, the modal clutch size, or two eggs without a third one on a subsequent visit) was estimated using the hatching date or through the egg-flotation pattern [34,35]. Alternatively, when the laying date was unknown (i.e. the nest was found with complete clutch)

but the nest scrape was previously recorded, we assumed that laying date had taken place midway between the last and the following visit.

We considered that nests were active when they were attended by adults for incubation tasks. Evidence of nest activity included: (i) the observation of incubating parents; (ii) the observation of incubating parents flushing from the nest when the observer approached; (iii) the observation of adults performing distraction displays to potential predators (in most cases the observer) within the vicinity of the nest; (iv) egg-turning since the previous visit; (v) normal development according to the egg-flotation scheme [35]; and (vi) a high density of plover footprints in the sand around the nest scrape. We considered that nest was deserted if there was no evidence of the formerly described signs of activity. We assumed that both predation and desertion have occurred midway between the last visit with nest activity and the following visit.

Nests were considered successful when at least one egg hatched. Evidence of hatching included the presence of (i) chicks; (ii) eggshell evidences (i.e. small pieces of detached eggshell membranes in the nest scrape) [35,36]; (iii) adults with chicks or adults performing distraction displays when nests scrapes were empty close to hatching date. Evidence of predation included (i) partially consumed eggs in the nests scrapes and their surroundings, (ii) the presence of a mixture of yolk and sand from broken eggs, or (iii) the disappearance of eggs before expected hatching date.

For each nest, we calculated survival rate as the number of days elapsed from the laying of the first egg until the hatching of last egg, or until predation or desertion. The average maximum number of days that nests typically survived is 31 [2].

Habitat type

Each nest was assigned to one of the following habitat types: i) tidal debris (i.e., beach area outside the tidal zone where scattered organic and inorganic remains washed by the sea accumulate); ii) embryonic shifting dunes (i.e., first stages of dune construction, made up of ripples or raised sand bars of the upper parts of the beach); iii) shifting dunes (mobile dunes forming seaward dunes, typically following embryonic shifting dunes); and iv) semi-fixed dunes (i.e., dunes with little relief at the rear of shifting dunes, characterized by a vegetation dominated by bulbous plants and small sized scrubs). The latter habitat type includes nests located in grasslands of small annual plants that grow on deep sand areas among dry interdunal depressions.

Vegetation cover

We assessed the degree of vegetation cover within a one meter size square centered on the nest. For this purpose, we used Munsell Soil Charts [37] for estimating proportions of mottles and coarse fragments. These charts allow visual estimation of the relative cover of fragments (in our case vegetation patches) within squares according to the following percentages: 0, 1, 2, 3, 5, 7, 10, 15, 20, 25, 30, 40, 50 and >50%.

Visibility

During 1999 (Serradal) and 2008 (Punta) we assessed the degree of visibility from the nest to quantify the ability of incubating plovers to detect ground predators. Visibility from nests was measured using a custom built periscope, similar to that designed by [38] for a microhabitat study with larks. The periscope was designed to gain an accurate estimation of the incubating adult's field of vision. It has a movable mirror inside oriented to a window placed at the bottom, just at the height of the bird's-eye view. This allowed estimating the view of the incubating bird to potential predators. A transparent graduated plastic around the periscope

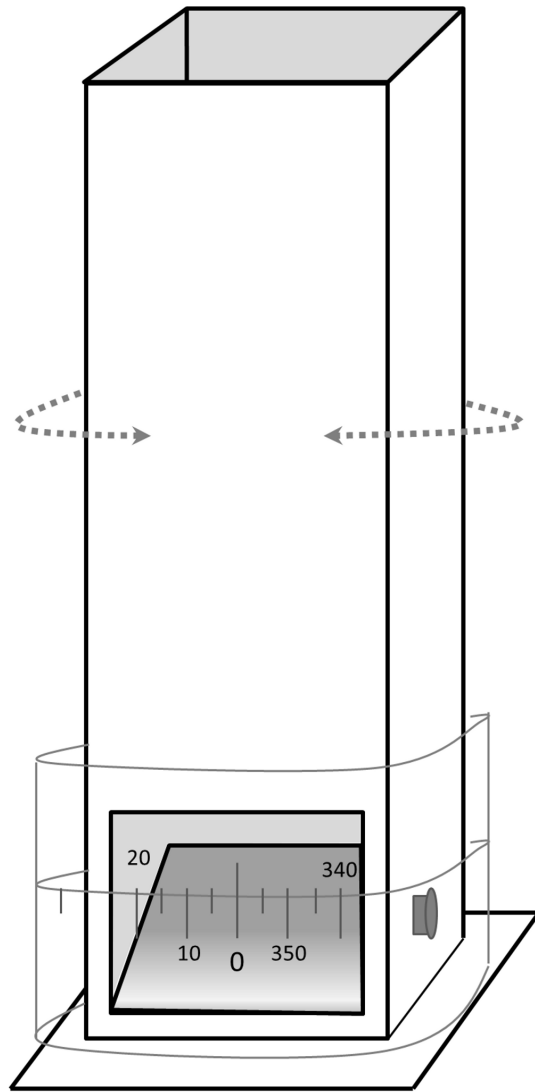


Figure 2. Inverted periscope used for the estimation of birds' visibility from the nest.

doi:10.1371/journal.pone.0107121.g002

allowed the measurement of the sum of degrees of visibility (i.e., from 0° to 360°) to the nearest five degrees (Fig. 2).

We used the periscope to measure the angle of visibility from the nest, and to determine if birds might be able to detect the presence of a person 1.70 m tall standing 25 m around the nest. Then, this person walked 360° around the nest (25 m radius from the nest, using a rope) and the observer recorded the sum of degrees out of the complete circumference that this person was visible from the nest. The same experiment was performed to estimate the detectability of a medium-sized predator (e.g. a dog) of an average height (0.50 m). Predator visibility was estimated using a red ribbon knotted on the person's leg. In order to avoid disturbing incubating birds, we recorded the visibility at each nest scrape just following hatching completion. The growth period of the dune vegetation in the study area occurs in winter (from November to February) and the senescence period starts from July. Taking into account that the laying period of the Kentish plover spans from late March-early April to late June, changes in vegetation cover between nest-site selection and hatching completion were negligible.

For comparisons, we use as controls the same number of points as nests. Control points were obtained for each nest by moving the periscope 10 m in a random direction. We replaced any control point that occurred on a substrate other than sand (for example water or very dense plant cover). We calculated the degree of visibility from control points with the same method as for nests.

We use a 25 m distance because our results of the flushing behavior experiment in one of the study sites revealed that plovers departed from the nest at an average flushing distance of 23.1 ± 12.3 m when the observer approached. Although other studies reported higher flushing distances [2,13], we considered that 25 m represents a realistic distance for the particular case of our study area.

Potential predators (e.g. dogs, humans) could gain access to the plover's breeding grounds from inland (e.g. adjacent promenades) or the seashore. To explore differences in birds' visibility with regard to the two types of access routes, we recorded for each nest seashore (from 0° to 180°) and inland (from 180° to 360°) visibility, separately (Fig. 3). Taking into account the sparse vegetation cover and the low height of plants around nests in our study area (usually below 25 cm) that very rarely shades the nests, the potential influence of air predators in nest site selection was not assessed (i.e., we considered that there were no limitations in the visibility to potential air predators from nests). The only exception would be birds whose hunting technique consisted in a ground-hugging flight, whose potential risk would be included in the experimental design.

Flushing behavior

Kentish Plovers rely on eggs' crypsis to conceal their nests [22,32]. In order to calculate flushing distance (i.e., the distance at which incubating adults leave the nest when they detect a potential predator), and whether this was related to vegetation cover, we conducted an experiment in which an observer walked in a straight line towards the nest. To this end, we walked directly from a distance of 150 m at constant speed in order to avoid bias associated with flush initiation distance [39]. The direction from which the observer approached the nest was randomized. When the incubating adult (usually the female during daytime) left the nest, we scored with a tape measure the distance between the observer and the nest. We only use the data for those cases in which we were able to record visually the precise moment when plovers departed from nests. In addition, to avoid a possible cumulative effect of humans' presence on flushing behavior, we only considered data collected from nests that had not been previously visited by us on the same day, and when humans had not been observed in the vicinity of the nest for at least one hour before the experiment. For the same reason, we did not approach the same nest more than once daily [13].

To account for variations in flushing behavior, we conducted experiments during both morning and afternoon and recorded sand temperature and incubation period (days since the first egg was laid) in each of the approaches to the nests. For analyses, data were grouped according to two categories: morning (8:00h to 12:00h) and afternoon (12:00h to 21:00h).

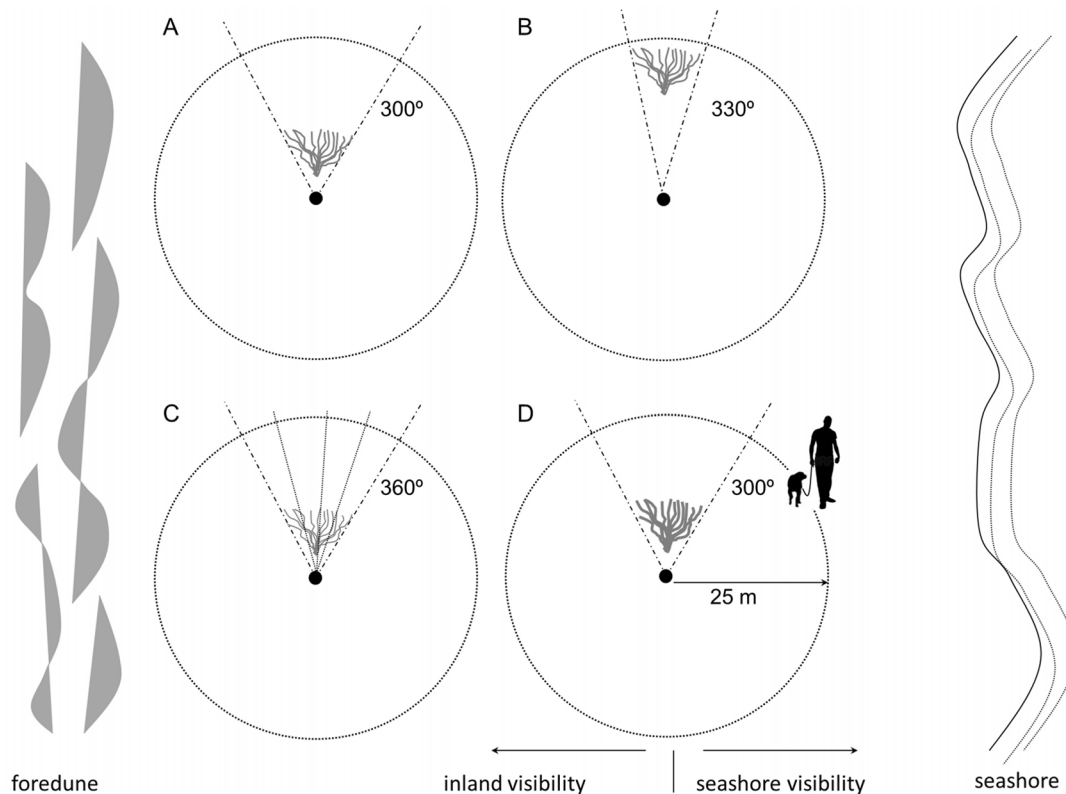


Figure 3. Experimental design to record visibility from Kentish Plovers' nests. Black dots show the location of Kentish plovers' nests. Circular dashed lines shows the perimeter of the circle (25 m radius) in which the visibility of both humans and dogs were recorded. Inland and seashore visibility were recorded separately by dividing the circle in two 180° sectors parallel to the seashore. The figure illustrates four different situations in which vegetation may obstruct plovers' view: a plant close to the nest (A) obstructs more (60° of view occluded) than the same plant farther from the nest (B) (30° of view occluded). In addition, a plant located at the same distance from the nest may allow the visibility through it (C) or may obstruct totally the visibility (D) depending on the permeability of the foliage density. doi:10.1371/journal.pone.0107121.g003

In addition, we also recorded whether plovers flushed from the nest or remained incubating in relation to two different situations: i) presence of people walking, and ii) people walking unleashed dogs, both at a distance between 25 and 75 m from nests. Observations were conducted between 18:00 and 20:00h in the beach with high level of human disturbance (Serradal). During this period we only recorded the first disturbance event for each nest. Observations for the same nest were separated at least one week. To avoid the cumulative effect of the number of people on nest disturbance we used the events in which one or two people were involved for analyses.

Statistical Analyses

Statistical analyses were carried out using SPSS v.19 software (SPSS, Chicago, IL, USA) and R package [40]. Descriptive statistics are represented as the mean \pm standard deviation. Data were tested for normality before being analyzed with parametric tests with one-sample Kolmogorov-Smirnov test. Comparison of continuous data between nest success and vegetation cover was carried out by using the Mann-Whitney U-test, and of categorical variables by using the Chi-squared (χ^2) test. Mann-Whitney tests were used to investigate differences between nest visibility and control points. The differences between the visibility of humans and dogs at the same site (nest or control point) were analyzed using the Wilcoxon Signed Ranks Test. Comparison of continuous data of flushing distances was carried out by using an unpaired Student's t-test. Finally, Spearman's correlation coefficient analysis was conducted to assess the relationships between flushing distance and vegetation cover, nest age (i.e., days of incubation) and sand temperature.

We used mixed-effects Cox proportional hazard models to test the effect of vegetation cover, habitat type and its combination on nest survival. This allowed us to deal with experimental design and to include some nests as censored data up to the point of desertion [41]. Since data were sampled in different years and beaches, we included year and beach as random effects in survival models. Mixed-effects Cox models were fitted using the R package "coxme" version 2.2-3 [42] and compared using a likelihood ratio test [41].

Results

Habitat type and vegetation cover

We analyzed 316 plover nests, of which nest fate was recorded. 38 nests were located in tidal debris, 56 in embryonic shifting dunes, 80 in shifting dunes and 142 in semi-fixed dunes. Nest failure was higher in dune habitats closer to the sea (Fig. 4). Nests on tidal debris and embryonic shifting dunes had higher failure rates (26.32% and 30.36% respectively) than those that were located in shifting dunes and semi-fixed dunes (16.25% and 20.42%, respectively). Differences in breeding success were significant when comparing the most exposed habitats to predators (i.e., tidal debris and embryonic shifting dunes) with those less exposed (i.e., shifting dunes and semi-fixed dunes) ($\chi^2 = 3.999$, d.f. = 1, $P < 0.046$).

Vegetation cover was recorded in 125 cases: 39 in Serradal, 19 in Almenara and 67 in Punta. In general, plovers tended to select sites without plants or low vegetation cover to build their nests (Fig. 5). Site choice was not limited by plant cover availability, since plants were abundant in both shifting and semi-fixed dunes in the study sites.

Predation and nest desertion were the main causes of clutch failure (predation: 41.4%, desertion: 42.9%, $N = 70$). Nest survival was affected by vegetation cover (Table 1). A mixed-effects Cox

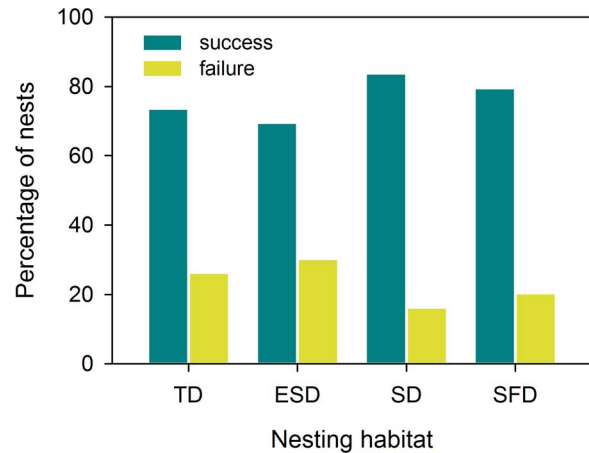


Figure 4. Nest fate in relation to habitat type. From left to right the distance to seashore increases. Abbreviations and sample size: tidal debris (TD; $N = 38$), embryonic shifting dunes (ESD; $N = 56$), shifting dunes (SD; $N = 80$) and semi-fixed dunes (SFD; $N = 142$). doi:10.1371/journal.pone.0107121.g004

model including habitat type as the only fixed effect did not find a significant effect on survival (Table 1). A model including both variables (cover + habitat) as fixed effects did not provide a better fit than a model including only vegetation cover ($\chi^2 = 6.022$, $df = 3$, $P = 0.111$). Nests with high vegetation cover showed higher survival probability than nests with low vegetation cover (Fig. 6).

Visibility

The visibility of humans from nests was 3–4 times higher than for dog-sized predators in the beach subject to human disturbance (Serradal, humans: $264 \pm 80^\circ$, dogs: $68 \pm 59^\circ$, Wilcoxon Signed Ranks Test, $Z = -4.199$, $P < 0.001$, $N = 23$). However, on the undisturbed beach with restricted access to humans, the difference between humans' and dogs' visibility was lower although still significant (Punta, humans: $240 \pm 76^\circ$, dogs: $181 \pm 85^\circ$, Wilcoxon Signed Ranks Test, $Z = -4.110$, $P < 0.001$, $N = 22$).

The visibility from real nests was higher than from control points for both humans and dogs (Mann-Whitney U test, humans: $U = 117.0$, $P = 0.001$; dogs: $U = 171.0$, $P = 0.036$, $N = 46$; Fig. 7). With regard to inland and seashore visibility, visibility of humans

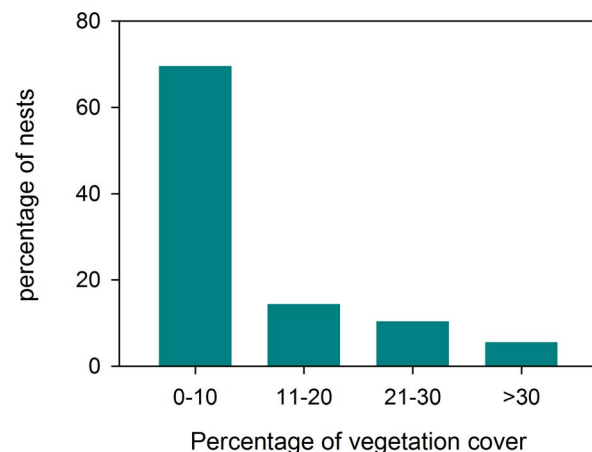


Figure 5. Frequency of Kentish plover nests in relation to vegetation cover. ($N = 125$). doi:10.1371/journal.pone.0107121.g005

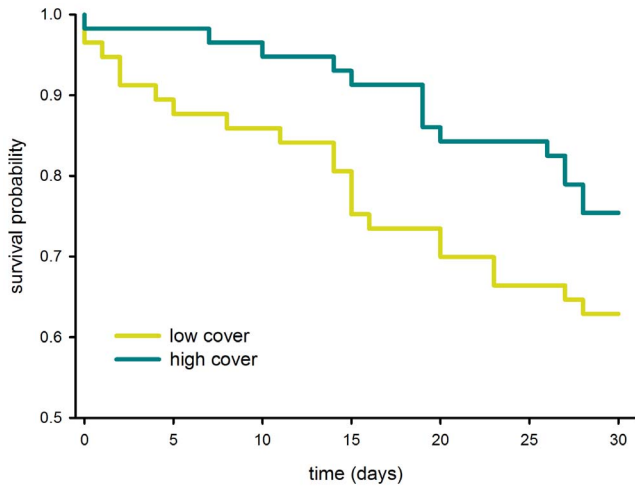


Figure 6. Survival plot from a Cox proportional hazards model with "vegetation cover" fitted as fixed effect. To highlight the effect of vegetation cover on nest survival the original dataset was split into "high" and "low" values of vegetation cover (according to the median) and plotted in two survival plots. Note that the two models represented here do not correspond to the Mixed-effects Cox proportional hazards models shown in Table 1. doi:10.1371/journal.pone.0107121.g006

was higher from real nests than from control points (Mann-Whitney U test, inland: $U = 137.5$, $P = 0.005$; seashore: $U = 111.0$, $P < 0.001$, $N = 46$). However, there were no differences in the visibility of dogs in both sectors between nests and control points (inland: $U = 180.0$, $P = 0.06$; seashore: $U = 230.0$, $P = 0.445$, $N = 46$).

When comparing disturbed and undisturbed beaches (Serradal vs Punta), humans' visibility from nests was similar (Mann-Whitney U test, $U = 203.5$, $P = 0.260$), but the dogs' visibility was greater in the beach without human presence (Mann-Whitney U test, $U = 71.5$, $P < 0.001$). Moreover, in the undisturbed beach (Punta), seashore visibility was higher for both humans and dogs (Wilcoxon Signed Ranks Test, humans: $Z = -3.741$, $P < 0.001$, dogs: $Z = -3.898$, $P < 0.001$, $N = 22$) in comparison with the disturbed beach (Wilcoxon Signed Ranks Tests, humans: $Z = 0.865$, $P = 0.387$; dogs: $Z = 0.915$, $P = 0.360$; $N = 23$). Considering beaches together, humans' and dogs' visibility from successful ($N = 36$) and failed nests ($N = 6$) was similar (Mann-

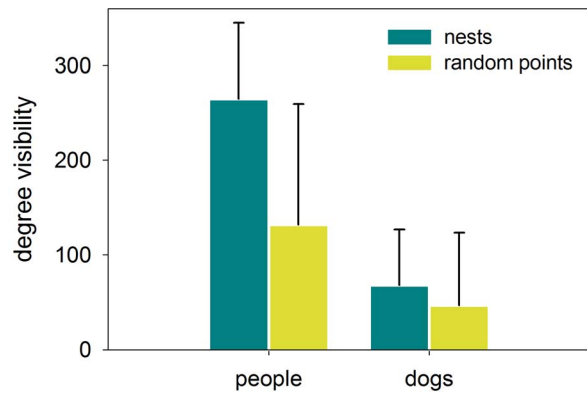


Figure 7. Visibility to potential predators. The comparison of the average visibility towards humans and dog-sized predators from real nest and a set of control points are shown. Error bars indicate the standard deviation. doi:10.1371/journal.pone.0107121.g007

Whitney U test, humans: $U = 98.0$, $P = 0.719$; dogs: $U = 95.5$, $P = 0.653$; $N = 42$).

With regards to nest visibility and vegetation cover, there was a negative relation among them, although not significant (Spearman correlation; humans visibility: $r_s = -0.348$, $P = 0.113$; dogs visibility: $r_s = -0.238$, $P = 0.286$; $N = 22$ in both cases).

Flushing behavior

Incubating plovers left nests when observers were at a mean distance of 38.7 ± 24.4 m ($N = 35$). 33 out of 35 cases the incubating adult was the female. The distance at which plovers flushed decreased with vegetation cover (Spearman correlation, $r_s = -0.411$, $P = 0.020$, $N = 32$). Neither days of incubation nor sand temperature nor time of day affected flushing distance (Spearman correlation: days of incubation, $r_s = 0.279$, $P = 0.110$; temperature, $r_s = -0.036$, $P = 0.846$; Student's t test, time, $t_{30} = 0.137$, $P = 0.892$). Flushing distances were higher on the undisturbed beach than the disturbed beach (Serradal, 23.1 ± 12.3 m; Punta, 44.4 ± 25.8 m; Student's t test, $t_{32} = 2.365$, $P = 0.024$). In 25.7% of the approaches at least one adult (in most cases the female) performed distraction displays towards the observer after nest flushing.

People walking unleashed dogs disturbed more frequently than people walking without dogs ($\chi^2 = 44.977$, $df = 1$, $P < 0.001$).

Table 1. Mixed-effects Cox proportional hazards models for the survival of Kentish Plover's nests in three beaches located in Eastern Spain.

| model | variable | coefficient | exp(coef) | SE(coef) | z | p |
|-----------------|------------------|-------------|-----------|----------|-------|-------|
| cover | vegetation cover | -0.022 | 0.978 | 0.009 | -2.40 | 0.017 |
| habitat | habitat (SD) | -0.324 | 0.723 | 0.326 | -0.99 | 0.320 |
| | habitat (SFD) | -0.021 | 0.979 | 0.297 | -0.07 | 0.940 |
| | habitat (TD) | -0.161 | 0.852 | 0.286 | -0.56 | 0.570 |
| cover + habitat | vegetation cover | -0.033 | 0.967 | 0.010 | -3.31 | 0.001 |
| | habitat (SD) | -0.562 | 0.570 | 0.306 | -1.84 | 0.066 |
| | habitat (SFD) | -0.100 | 0.905 | 0.288 | -0.35 | 0.730 |
| | habitat (TD) | -0.567 | 0.567 | 0.293 | -1.94 | 0.053 |

The variable "habitat type" was categorical. All factor levels of this variable were compared with the reference level (i.e., embryonic shifting dunes). Abbreviations: tidal debris (TD), embryonic shifting dunes (ESD), shifting dunes (SD) and semi-fixed dunes (SFD); SE = standard error. doi:10.1371/journal.pone.0107121.t001

Disturbance caused by dogs resulted in adults flushing from the nest in 73.33% of cases compared with only 14.29% of nest departures caused by humans.

Discussion

Kentish Plover selected sites without plants or little vegetation cover for nesting, despite the fact that under these conditions nests had a higher failure rate as compared to more sheltered sites. Increased vegetation density and habitat heterogeneity may reduce nest predation rates [43,44]. Despite this advantage, many shorebirds nest in open habitats typically with very low vegetation cover [8]. In line with this, some studies have shown that Plovers avoid nesting in vegetated areas so as to increase predator detection [2,13,14,45,46]. Therefore, Plovers show competing interests between adult and nest survival and thus they must balance the benefits of visibility against predation risk when selecting nest-sites [12]. Such evidences have suggested that a trade-off exists between nest crypsis and the ability of incubating adults to detect predators [7,16]. Our results reveal that Kentish plovers nesting on sandy beaches actively selected nest sites located on the inland part of the beach and on embryonic shifting dunes with little or no vegetation cover. Plovers' nest site selection could be accounted for by two different non-exclusive reasons: (i) to avoid nest flooding during heavy marine storms [47]; and (ii) to minimize adult predation by maximizing the plovers' ability to detect predators [2]. Our results are consistent with previous studies that show that plovers select flat and sparsely vegetated habitats for nesting [11,13,21–23].

Nest-site selection might be the result of a trade-off between the risk of adult predation and clutch success. Our results reveal a higher success for concealed nests and would therefore support the existence of this trade-off between nest concealment and predator detectability. Furthermore, birds must balance the benefits of thermoregulation against the risk of predation when selecting nest-sites [48]. The trade-off between nest concealment and predator detectability must be solved so as to provide an appropriate microclimate for incubation [2,49].

Normally plovers use flat or gently sloping sites for nesting [12,13,15,20,32]. However, even in these situations, the micro-relief around the nest may reduce the visibility of the surroundings [50]. Moreover, most studies conducted so far consider that vegetation cover is directly proportional to the degree of predator visibility from the nest [15,51]. Notwithstanding, this relationship is not always accurate. In fact, our results do not show a significant relationship between vegetation cover and visibility. One of the strengths of our study is that we considered predator detection from the bird's-eye view. This allowed us to distinguish between those elements that constitute a real obstacle to the bird's visual field. For example, a given amount of vegetation may obstruct in a different way the visibility of incubating adults depending on both vision permeability (i.e. plant foliage and branch density) and the distance between the plant and the bird (Fig. 3). Likewise, the absence of vegetation cover should not necessarily be interpreted as a privileged position for predator detection, since elevations in the surroundings of the nest (e.g. the existence of nearby shifting dunes) can substantially reduce adult visibility.

Nesting in open areas increases the detectability of predators but also increases the probability that the incubating adult can be easily detected. However, more conspicuous individuals might be able to compensate for a higher predation risk by modifying their anti-predator behavior [3]. In this context, early flushing behavior may be an effective adaptation against terrestrial nest predators that hunt using olfactory stimuli, because unattended nests are

more difficult to find [24]. Animals may adjust their vigilance according to how conspicuous they appear to predators [52]. Early flushing behavior may also be an effective adaptation against nest predators that follow a strategy based on locating nests from the departures of incubating adults [53]. We found that plovers left their nests later when the observer approached with increasing vegetation cover. These results are in agreement with previous studies which found that predation on incubating adults was more frequent at more concealed sites, and that plovers with unrestricted view departed sooner when an observer approached [2].

Once the predator is close to the nest, plovers may perform distraction displays to prevent predators from locating the nest [8,45]. In the three study areas, plovers frequently performed distraction displays to lure the observer away from nest sites during visits. In fact, nearly 25% of the approximations in the flushing behavior experiment resulted in at least one adult (in most cases the female) performing distraction displays after leaving its nest. This behavior contrasts with that observed in a Kentish Plover population breeding in an inland lake in Spain, where plovers did not perform distraction displays towards humans [2]. Plovers could perform displays towards humans because they consider that humans are potential predators [54]. Interestingly, we found that birds of the undisturbed beach (Punta) behaved similarly to the birds of the other two beaches subject to human disturbance. It is likely that the birds in our study area were more habituated to human presence. However, we observed that plovers left their nests closer to the observer in the beach with high levels of human disturbance than in the undisturbed beach. This suggests that shorebirds breeding in beaches may get used to human presence, and are capable of adjusting anti-predator behavior to disturbance level. Differences in reaction distance suggest that although escape from predation is generally prioritized above other activities [3], including incubation, birds can modulate this behavior when they are habituated to the presence of humans walking [55,56].

Both humans and dogs are considered predators by shorebirds [31,51,57–59], and both are directly responsible for a significant number of failed nests [11,53,60]. Dogs disturb proportionately more nests than humans on beaches [56] presumably because dogs chase plovers on a regular basis and birds instinctively view them as predators [61–63]. On the beach most affected by human presence (Serradal), the main threats of nests and incubating plovers were humans and dogs. Occasionally we observed some beach walkers chasing birds when they performed distraction displays, particularly when birds were simulating to be injured. Furthermore, people sporadically destroyed nests or stole plover eggs (13.56% of nest failures in disturbed beaches). However, disturbance caused by dogs was more frequently recorded than disturbance caused by humans. Domestic dogs were usually walked along the beaches and frequently chased the birds (1.64% of nest failures directly attributed to dogs). We found that visibility from the nests regarding humans was similar on both disturbed and undisturbed beaches. Nevertheless, the view from the nests towards dogs was greater in the undisturbed beach, although the presence of dogs was scarcer. This greater visibility regarding dogs might be explained by the preference of the birds from this beach to locate their nests in open habitats, particularly among the tidal debris, so these sites had better visibility to terrestrial predators. Instead, on the beach most affected by human presence (Serradal) birds tended to locate their nests in sites more distant from seashore. Nesting in less exposed locations might be explained by two non-exclusive reasons. On one hand, plovers would distance from the disturbance caused by bathers and walkers and their pets. On the other hand, birds would be forced to nest on alternative

habitats as a result of the beach management, where the tidal debris are periodically removed.

Birds nesting on beaches are under higher level of human disturbance than birds breeding in other habitats [64]. This is particularly important in highly humanized areas, where tourism is one of the most important economic activities, such as the Mediterranean coastal areas. The outcome is a progressive narrowing of the suitable breeding habitat for plovers. In disturbed beaches, plovers are forced to move to inland sites. However, inland areas are less suitable because of higher vegetation cover [31,65]. This constraint on the width of suitable breeding habitat is particularly relevant for the conservation of breeding populations of Kentish Plover, especially under the current context of coastal regression [66], and under future scenarios of sea-level rise from climate change [67,68]. Therefore, the protection of the widest beaches would be an adequate strategy for plover conservation, given the difficulty of mitigating the effects of coastal erosion. Efforts undertaken so far to reduce the effects of coastal erosion on sandy beaches have been aimed at creating breakwaters and high shifting dunes close to the seashore, typically with high coverage of dune plants. Our results evidence that this type of dune habitat is

not the most suitable for the Kentish plover since they avoid sloping areas with high vegetation cover. In fact, this could be one of the causes of many local extinctions or drastic reduction of breeding populations observed along the Mediterranean coast of Spain (authors unpubl. data). We recommend that future dune restorations should take into account Kentish Plover habitat selection [31].

Acknowledgments

This paper takes part of the doctoral thesis of MAGS at the University of Alicante. We thank M. Muñoz, J. Tomás, P. González, B. Sarzo and C. Oltra for field assistance. V. Del Toro kindly revised the English of an earlier draft of the manuscript. E. Gómez built the periscope.

Author Contributions

Conceived and designed the experiments: MAGS. Performed the experiments: MAGS. Analyzed the data: MAGS PLL. Contributed reagents/materials/analysis tools: MAGS PLL. Contributed to the writing of the manuscript: MAGS PLL.

References

- Ricklefs RE (1969) An analysis of nesting mortality in birds. *Smithsonian Contributions to Zoology* 9: 1–48.
- Amat JA, Masero JA (2004) Predation risk on incubating adults constrains the choice of thermally favourable nest sites in a plover. *Animal Behaviour* 67: 293–300.
- Magnhagen C (1991) Predation risk as a cost of reproduction. *Trends in Ecology & Evolution* 6: 183–186.
- Lack D (1968) *Ecological adaptations for breeding in birds*. London: Methuen.
- Martin TE (1993) Nest predation among vegetation layers and habitat types: revising the dogmas. *American Naturalist* 141: 897–913.
- Colwell MA, Meyer JJ, Hardy MA, McAllister SE, Transou AN, et al. (2011) Western Snowy Plovers *Charadrius alexandrinus nivosus* select nesting substrates that enhance egg crypsis and improve nest survival. *Ibis* 153: 303–311.
- Götmark F, Blomqvist D, Johansson OC, Bergkvist J (1995) Nest site selection: a trade-off between concealment and view of the surroundings? *Journal of Avian Biology* 26: 305–312.
- Colwell MA (2010) *Shorebird Ecology, Conservation, and Management*. Berkeley, California: University of California Press.
- Colwell MA, Dodd SL (1997) Environmental and Habitat Correlates of Pasture Use by Nonbreeding Shorebirds. *Condor* 99: 337–344.
- Galbraith H (1988) Effects of agriculture on the breeding ecology of lapwings *Vanellus vanellus*. *Journal of Applied Ecology* 25: 487–503.
- Fraga RM, Amat JA (1996) Breeding biology of a Kentish plover (*Charadrius alexandrinus*) population in an inland saline lake. *Ardeola* 43: 69–85.
- Beauvais GP, Smith R (2003) Model of breeding habitat of the Mountain Plover (*Charadrius montanus*) in western Wyoming. *Western North American Naturalist* 63: 88–96.
- Muir JJ, Colwell MA (2010) Snowy Plovers select open habitats for courtship scrapes and nests. *Condor* 112: 507–510.
- Saalfeld ST, Conway WC, Haukos DA, Johnson WP (2011) Nest success of Snowy Plovers (*Charadrius nivosus*) in the Southern High Plains of Texas. *Waterbirds* 34: 389–399.
- Anteau MJ, Sherfy MH, Wiltermuth MT (2012) Selection Indicates Preference in Diverse Habitats: A Ground-Nesting Bird (*Charadrius melodus*) Using Reservoir Shoreline. *PLoS ONE* 7(1): e30347.
- Cresswell W (1997) Nest predation: the relative effects of nest characteristics, clutch size and parental behaviour. *Animal Behaviour* 53: 93–103.
- Forstmeier W, Weiss I (2004) Adaptive plasticity in nest-site selection in response to changing predation risk. *Oikos* 104: 487–499.
- Magaña M, Alonso JC, Martín CA, Bautista LM, Martín B (2010) Nest-site selection by Great Bustards *Otis tarda* suggests a trade-off between concealment and visibility. *Ibis* 152: 77–89.
- Oltra C, Gómez-Serrano MA (1997) Amenazas humanas sobre las poblaciones nidificantes de limícolas en ecosistemas litorales. In: *Las Aves Limícolas en España*. Madrid: Ministerio de Medio Ambiente, Organismo Autónomo de Parques Nacionales. pp. 175–200.
- Colwell MA, Millett CB, Meyer JJ, Hall JN, Hurley SJ, et al. (2005) Snowy plover reproductive success in beach and river habitats. *Journal of Field Ornithology* 76: 373–382.
- Grant GS (1982) Avian incubation: egg temperature, nest humidity, and behavioral thermoregulation in a hot environment. *Ornithological Monographs* 30: 1–75.
- Page GW, Stenzel LE, Ribic CA (1985) Nest site selection and clutch predation in the snowy plover. *The Auk* 102: 347–353.
- Warriner JS, Warriner JC, Page GW, Stenzel LE (1986) Mating system and reproductive success of a small population of polygamous snowy plovers. *Wilson Bulletin* 98: 15–37.
- Koivula K, Rönkä A (1998) Habitat deterioration and efficiency of antipredator strategy in a meadow-breeding wader, Temminck's stint (*Calidris temminckii*). *Oecologia* 116: 348–355.
- Jones J (2001) Habitat studies in avian ecology: a critical review. *Auk* 118: 557–562.
- Saalfeld ST, Conway WC, Haukos DA, Johnson WP (2012) Snowy Plover nest site selection, spatial patterning, and temperatures in the Southern High Plains of Texas. *Journal of Wildlife Management* 76: 1703–1711.
- BirdLife International (2014) Species factsheet: *Charadrius alexandrinus*. Available: <http://www.birdlife.org/datazone/speciesfactsheet.php?id=3129>. Accessed 21 May 2014.
- Küpper C, Augustin J, Kosztolanyi A, Burke T, Figuerola J, et al. (2009) Kentish versus Snowy Plover: Phenotypic and genetic analyses of *Charadrius alexandrinus* reveal divergence of Eurasian and American subspecies. *The Auk* 126: 839–852.
- Figuerola J, Amat JA, Diaz-Caballero JA (2005) Chorlitejo patinegro *Charadrius alexandrinus*. In: Madroño A, González C, Atienza JC, editors. *Libro Rojo de las Aves de España*. Madrid: Dirección General para la Biodiversidad-SEO/BirdLife. pp. 228–230.
- Figuerola J, Amat JA (2003) Chorlitejo Patinegro *Charadrius alexandrinus*. In: Martí R, del Moral JC, editors. *Atlas de las Aves Reproductoras de España*. Madrid: Dirección General de Conservación de la Naturaleza-Sociedad Española de Ornitología. pp. 76–77.
- Webber AF, Heath JA, Fischer RA (2013) Human disturbance and stage-specific habitat requirements influence snowy plover site occupancy during the breeding season. *Ecology and Evolution* 3: 853–863.
- Page GW, Lynne E, Warriner JS, Warriner JC, Paton PW (2009) Snowy Plover (*Charadrius nivosus*). In: Poole A, editor. *The Birds of North America Online*. Ithaca: Cornell Lab of Ornithology. Available: <http://bna.birds.cornell.edu/bna/species/154>. Accessed 15 April 2014. doi:10.2173/bna.154.
- Colwell MA (2006) Egg-laying intervals in shorebirds. *Wader Study Group Bulletin* 111: 50–59.
- Van Paassen AG, Veldman DH, Beintema AJ (1984) A simple device for determination of incubation stages in eggs. *Wildfowl* 35: 173–178.
- Mabee TJ, Wildman AM, Johnson CB (2006) Using egg flotation and eggshell evidence to determine age and fate of Arctic shorebird nests. *Journal of Field Ornithology* 77: 163–172.
- Mabee TJ (1997) Using eggshell evidence to determine nest fate of shorebirds. *The Wilson Bulletin* 109: 307–313.
- Munsell Color (1992) *Munsell Soil Color Charts*. Newburgh, NY: Macbeth Div. Kollmorgen Instruments Corp. 18 p.
- Yanes M, Herranz J, Suárez F (1996) Nest microhabitat selection in larks from European semi-arid shrub-steppe: the role of sunlight and predation. *Journal of Arid Environments* 32: 469–478.
- Blumstein DT (2003) Flight initiation distance in birds is dependent on intruder starting distance. *Journal of Wildlife Management* 67: 852–857.

40. R Core Team (2013) R: A language and environment for statistical computing. R Foundation for Statistical Computing, Vienna, Austria. Available: <http://www.R-project.org/>. Accessed 2014 Aug 18.
41. Therneau TM, Grambsch PM (2000) Modeling Survival Data: Extending the Cox Model. Berlin: Springer-Verlag.
42. Therneau T (2012) Coxme: Mixed Effects Cox Models <http://cran.r-project.org/web/packages/coxme/index.html>. Accessed 2012 May 15.
43. Newton I (1998) Population Limitation in Birds. London: Academic Press.
44. Willson MF, Morrison JL, Sieving KE, de Santo TL, Santisteban L, et al. (2001) Patterns of predation risk and survival of bird nests in a Chilean agricultural landscape. *Conservation Biology* 15: 447–456.
45. Gochfeld M (1984) Antipredator behavior: aggressive and distraction displays of shorebirds. In: Burger J, Olla BL, editors. *Shorebirds: Breeding Behavior and Populations. Behavior of Marine Animals: Current perspectives in research*, volume 5. New York: Plenum Press. pp. 289–377.
46. Martin TE (1988) Processes organizing open-nesting bird assemblages: competition or nest predation? *Evolutionary Ecology* 2: 37–50.
47. Norte AC, Ramos JA (2004) Nest-site selection and breeding biology of Kentish plover *Charadrius alexandrinus* on sandy beaches of the Portuguese west coast. *Ardeola* 51: 255–268.
48. Lima SL, Dill LM (1990) Behavioral decisions made under risk of predation: a review and prospectus. *Canadian Journal of Zoology* 68: 619–640.
49. Mayer P, Smith LM, Ford RG, Watterson DC, McCutchen MD, et al. (2009) Nest construction by a ground-nesting bird represents a potential trade-off between egg crypticity and thermoregulation. *Oecologia* 159: 893–901.
50. Whittingham MJ, Percival SM, Brown AF (2002) Nest-site selection by golden plover: why do shorebirds avoid nesting on slopes? *Journal of Avian Biology* 33: 184–190.
51. Schulz R, Stock M (1993) Kentish plovers and tourists: competitors on sandy coasts? *Wader Study Group Bulletin* 68: 83–91.
52. Metcalfe NB (1984) The effect of habitat on the vigilance of shorebirds: is visibility important? *Animal Behaviour* 32: 981–985.
53. Burrell NS, Colwell MA (2012) Direct and indirect evidence that productivity of Snowy Plovers *Charadrius nivosus* varies with occurrence of a nest predator. *Wildfowl* 62: 202–221.
54. Frid A, Dill LM (2002) Human-caused disturbance stimuli as a form of predation risk. *Conservation Ecology* 6(1): 11. Available: <http://www.ecologyandsociety.org/vol6/iss1/art11/>. Accessed 2014 May 1.
55. Ikuta LA, Blumstein DT (2003) Do fences protect birds from human disturbance? *Biological Conservation* 112: 447–452.
56. St Clair JH, Garcia-Pena GE, Woods RW, Szekeley T (2010) Presence of mammalian predators decreases tolerance to human disturbance in a breeding shorebird. *Behavioral Ecology* 21: 1285–1292.
57. Roberts G, Evans PR (1993) Responses of foraging sanderlings to human approaches. *Behaviour*, 126: 29–43.
58. Weston MA, Stankowich T (2014) Dogs as agents of disturbance. In: *Free-ranging dogs and wildlife conservation*. Oxford: Oxford University Press. pp. 94–116.
59. Lafferty KD (2001) Disturbance to wintering western snowy plovers. *Biological Conservation* 101: 315–325.
60. Domínguez J, Vidal M (2003) Influencia del investigador en el éxito reproductivo del chorlito patinegro *Charadrius alexandrinus*. *Ardeola* 50: 15–19.
61. Pfister C, Harrington B, Lavine M (1992) The impact of human disturbance on shorebirds at a migration staging area. *Biological Conservation* 60: 115–126.
62. Burger J (1994) The effect of human disturbance on foraging behavior and habitat use in piping plover *Charadrius melodus*. *Estuaries* 17: 695–701.
63. Lafferty KD (2001) Birds at a Southern California beach: seasonality, habitat use and disturbance by human activity. *Biodiversity and Conservation* 10: 1–14.
64. Defeo O, McLachlan A, Schoeman DS, Schlacher TA, Dugan J, et al. (2009) Threats to sandy beach ecosystems: a review. *Estuarine, Coastal and Shelf Science* 81: 1–12.
65. Medeiros R, Ramos JA, Pedro P, Thomas RJ (2012) Reproductive consequences of nest site selection by Little Terns breeding on sandy beaches. *Waterbirds* 35: 512–524.
66. Sanjaume E, Pardo J (1991) The possible influence of sea level rise on the precarious dunes of Devesa del Saler Beach, Valencia, Spain. *Landscape Ecology* 6: 57–64.
67. Aiello-Lammens ME, Chu-Agor ML, Convertino M, Fischer RA, Linkov I, et al. (2011) The impact of sea-level rise on Snowy Plovers in Florida: integrating geomorphological, habitat, and metapopulation models. *Global Change Biology* 17: 3644–3654.
68. Seavey JR, Gilmer B, McGarigal KM (2011) Effect of sea-level rise on piping plover (*Charadrius melodus*) breeding habitat. *Biological conservation* 144: 393–401.