

Resveratrol-Enriched Rice Down-Regulates Melanin Synthesis in UVB-Induced Guinea Pigs Epidermal Skin Tissue

Taek Hwan Lee¹, Jae Ok Seo², Moon Ho Do², Eunhee Ji², So-Hyeon Baek³ and Sun Yeou Kim^{2,4,5,*}

¹College of Pharmacy, Yonsei University, Incheon 406-840, ²College of Pharmacy, Gachon University, Incheon 406-799,

³National Institute of Crop Science, Rural Development Administration, Iksan 570-080,

⁴Gachon Medical Research Institute, Gil Medical Center, Incheon 405-760,

⁵Gachon Institute of Pharmaceutical Science, Gachon University, Incheon 406-799, Republic of Korea

Abstract

Synthetic compounds that are used in the clinic to regulate skin hyperpigmentation, such as arbutin, hydroquinone, and kojic acid, are only moderately effective. But, their use is limited by side effects. As part of an effort to overcome the limitations, we developed resveratrol-enriched rice (RR) using genetic engineering technique. Each of resveratrol and rice has been reported to produce anti-melanogenic effects. Therefore, we hypothesized that RR would show more anti-melanogenic effects than those of resveratrol or rice alone. Anti-melanogenic effect of RR was done by using melan-a mouse melanocytes. The depigmenting efficacy was then observed following topical application of the RR to UVB-stimulated hyperpigmented dorsal skin of guinea pigs. Treatment with RR extract resulted a $21.4 \pm 0.7\%$ decrease in tyrosinase expression at melan-a cells. Colorimetric analysis showed a significantly lower depigmenting value by day 9 following treatment with RR in UVB-irradiated guinea pigs the dorsal skin ($p < 0.01$), indicating that RR produced a depigmentation effect. By staining with Fontana-Masson stain, we found that the RR-treated group had more effect histopathologically in epidermal melanin production than resveratrol or rice alone-treated group. RR was associated with reduction in the levels of microphthalmia-associated transcription factor (MITF), and downregulation of tyrosinase and tyrosinase-related protein (TRP-2) expression, leading to inhibit epidermal melanin production by western blot analysis. This study suggests that the resveratrol-enriched rice may be a promising candidate in regulating skin pigmentation with UVB exposure.

Key Words: Resveratrol, Rice, Melanogenesis, Resveratrol-enriched rice, Ultraviolet B, Guinea pig

INTRODUCTION

Botanically derived products are used frequently in the cosmetics industry because of the increased preference of the consumer for environmentally friendly cosmetics. Resveratrol, a natural product-derived polyphenolic compound, has been widely used in the cosmetics and pharmaceutical industries because of its pharmacological activities, which include anti-tumor, anti-inflammation, and anti-aging effects (Chen *et al.*, 2013). Recent reports have shown that resveratrol produced therapeutic effects against hyperplastic skin disorders by inhibiting keratinocyte proliferation (Wu *et al.*, 2014), inhibited skin photoaging by acting as a Sirt-1 agonist (Lee *et al.*, 2010), and showed anti-cancer effects in human melanoma cell lines (Niles *et al.*, 2003). The anti-melanogenic effects of resvera-

tol and resveratrol analogs have already been reported by many other groups (Ohguchi *et al.*, 2003; Song *et al.*, 2012; Bae *et al.*, 2013; Park and Boo, 2013; Park *et al.*, 2014). We previously demonstrated the depigmentation effects of resveratrol in UVB-treated guinea pigs (Lee *et al.*, 2014), too. In this previous report, resveratrol strongly down-regulated tyrosinase, tyrosinase-related protein (TPR)-1, TPR-2, and microphthalmia-associated transcription factor (MITF) in animal study (Lee *et al.*, 2014). Tyrosinase plays an important role in determining melanin production (Peng *et al.*, 2013) by initiating melanin synthesis through the conversion of tyrosine to 3,4-dihydroxyphenylalanine (L-DOPA). TRP-1 and TPR-2 stabilize tyrosinase and regulate its function in melanin formation; these three types of enzymes are key mediators of melanogenesis that is promoted by the binding of MITF (Newton

Open Access <http://dx.doi.org/10.4062/biomolther.2014.098>

This is an Open Access article distributed under the terms of the Creative Commons Attribution Non-Commercial License (<http://creativecommons.org/licenses/by-nc/3.0/>) which permits unrestricted non-commercial use, distribution, and reproduction in any medium, provided the original work is properly cited.

Received Sep 3, 2014 Revised Sep 9, 2014 Accepted Sep 16, 2014

Published online Sep 30, 2014

***Corresponding Author**

E-mail: sunnykim@gachon.ac.kr

Tel: +82-32-899-6411, Fax: +82-32-899-8962

et al., 2007).

Being widening the scope of its usage, our collaborative group produced the resveratrol enriched-rice (RR) using genetic engineering methods. In previous report, long-term supplement of RR showed anti-obesity effects, as manifested by reduced body weights and abdominal fat volumes, without causing serious side effects (Baek et al., 2014). This previous study suggests that RR may be a natural source of biologically active resveratrol, showing a synergistic interaction between resveratrol and rice in the control of metabolic syndrome and related diseases (Baek et al., 2013).

Rice (*Oryza sativa* var. japonica) is one of the most consumed cereal grains and has been used in cosmetics industry in Korea, China, and Japan (Jun et al., 2012). Several studies have reported that rice has beneficial effects on skin aging, including skin lightening, decreased roughness, and increased thickness and elasticity. (Seo et al., 2009; Manosroi et al., 2012a). Moreover, it has been reported that rice-derived glucosylceramides improved epidermal water loss and barrier function by regulating ceramides and glucosylceramides in mouse skin and human epidermal equivalents. (Shimoda et al., 2012). Given these studies on the biological effects of resveratrol and rice, we expected that RR might have synergistic anti-melanogenic effects stronger than that of resveratrol or rice alone.

Previous *in vitro* studies have shown that resveratrol produced beneficial effects on skin aging; however, the high polarity of resveratrol severely restricts its penetration into the skin and limits its topical use. We expect that the topical use of RR will overcome this limitation of resveratrol, because rice has shown good biocompatibility and increases penetration into the skin (Manosroi et al., 2012b). Therefore, the aim of this study is to determine whether the RR is more effective on anti-melanogenesis than resveratrol alone as a skin whitening agent. To evaluate the depigmentation effect of RR, we used UVB-induced epidermal hyperpigmentation model in guinea pig, and focused on evaluating for the regulation of levels of melanogenic-relating enzymes by treatment of RR.

MATERIALS AND METHODS

Chemicals

Dulbecco's modified Eagle's medium (DMEM), fetal bovine serum (FBS), and penicillin streptomycin were purchased from Gibco BRL (Grand Island, NY, USA). 3-(4,5-Dimethylthiazol-2-yl)-2,5-diphenyltetrazolium bromide (MTT) and dimethyl sulfoxide (DMSO) were purchased from Sigma-Aldrich (St. Louis, MO, USA).

Standard and sample preparation for HPLC analysis

Resveratrol was purchased from Sigma-Aldrich (St. Louis, Missouri, USA). Rice (*Oryza sativa* var. japonica) and resveratrol enriched rice (RR) were supplied by the Rural Development Administration of South Korea. The standard stock solutions of the experimental compounds were prepared by dissolving 1 mg of each compound in 1 mL MeOH, and the resulting solutions were stored at -20°C. Rice and RR samples (10 g) were extracted in 100 mL MeOH and then placed in an ultrasonic bath for 60 min. After the extracts were filtered and evaporated, they were dissolved in MeOH at a final concentration of 10 mg/mL.

HPLC analysis

Analysis was carried out on a Waters system (Waters Corp., Milford, MA, USA), consisting of a separation module (e2695) with a photodiode array detector (2998). UV absorbance was monitored from 200 to 700 nm. Quantification was carried out by integration of the peak areas at 660 nm. The injection volume was 10 µL. Separation was carried out using a YMC-Triart C18 column (250×4.6 mm; particle size, 5 µm; YMC Co. Ltd., Kyoto, Japan). The mobile phase was composed of 1% acetic acid-water (v/v solvent A) and acetonitrile (solvent B). The flow rate was 1 mL/min, and the gradient was as follows; 0.0-3.0 min, 95% A; 20.0 min, 85% A; 44.0 min, 75% A.

Experimental animals

Five-week-old male brown guinea pigs (KIWA:A1) (weighing 272 ± 3 g, n=4) were obtained from Japan Kiwa Laboratory Animals Co., Ltd. (Wakayama, Japan). The guinea pigs were kept in a temperature- and humidity-controlled room (22 ± 1°C, 50 ± 5% humidity) with 12 h light/dark cycles. The animals were acclimated to the laboratory environment for 7 days. During the experimental period, the mice were allowed free access to food and water. Animal experiment was approved by the Institutional Animal Care and Use Committee of Korea Conformity Laboratories (IA13-00229).

UVB irradiation for hyperpigmentation

The UV source was supplied by a closely spaced array of 5 Sankyo Denki sun lamps with peak irradiance at 310 nm (Kanagawa, Japan). The bulbs were positioned 15 cm above the guinea pigs. Irradiation (0.1 mW/cm²) was measured with an IL1700 Research Radiometer (International Light, Inc., Newburyport, MA, USA) equipped with a UVB sensor. After hair removal, the dorsal skin of the guinea pigs was exposed to 390 mJ/cm² UVB radiation 3 times per week for 2 weeks.

Sample administration in guinea pigs

RR extract was dissolved in a mixture of ethanol and propylene glycol (3:7, v/v). The sample solution was applied topically to the dorsal skin once per day for 9 days after the final UVB treatment. Solutions of 1% resveratrol, 1% arbutin, 1% rice, or 1% RR (200 µL; 10 mg/mL) were applied to separate 2 cm² areas of the dorsal skin. We applied 4 different sample solutions (1% resveratrol, 1% rice, 1% RR, or 1% arbutin) to separate skin areas for 9 days and measured dorsal skin color using the Dermalab[®] Combo system (Cortex Technology ApS, Hudsund, Denmark).

Western blot

Melan-a immortal mouse melanocytes and treated guinea pig skin were homogenized separately and lysed in lysis buffer (50 mM Tris-Cl, pH 8.0, 0.1% SDS, 150 mM NaCl, 1% NP-40, 0.02% sodium azide, 0.5% sodium deoxycholate, 100 µg/mL PMSF, 1 µg/mL aprotinin) on ice for 2 h, after which the supernatant was collected by centrifuging at 12000 g. Protein amounts were estimated via the Bradford assay using bovine serum albumin (BSA). Protein (40 µg) was separated by 10% SDS-PAGE and transferred to a nitrocellulose membrane, which was blocked for 1 h using 5% skim milk and incubated overnight at 4°C with a primary antibody: α-tubulin (1:3000 dilution, Sigma-Aldrich, St. Louis, MO, USA), MITF (1:500 dilution, Cell Signaling Technology, Inc., Danvers, MA, USA), tyrosinase (1:500 dilution, Abcam, Cambridge, MA, USA),

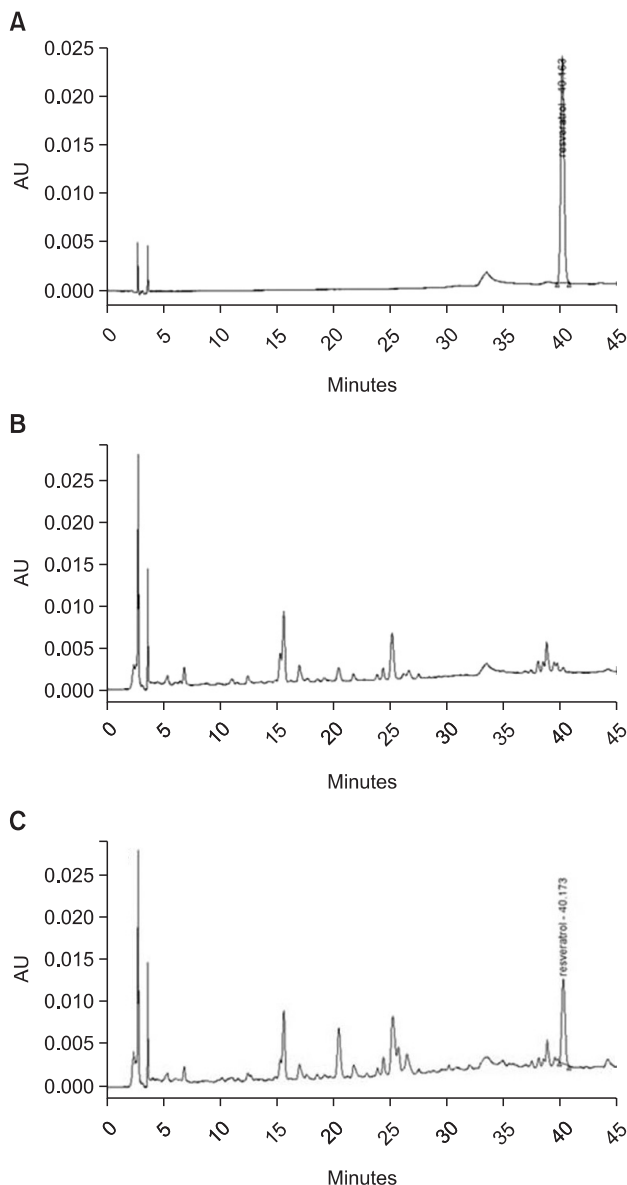


Fig. 1. HPLC chromatogram. Resveratrol standard (A); control rice (B); resveratrol-enriched rice (C).

TRP-1 (1:500 dilution, Santa Cruz Biotechnology Inc., Santa Cruz, CA, USA), or TRP-2 (1:500 dilution, Santa Cruz Biotechnology Inc.). After incubation, the membranes were washed using TBST and incubated with a horseradish peroxidase conjugated secondary antibody for 1 h. Finally, immune complexes were detected with a ChemiDocXRS+imaging system (Bio-Rad, Hercules, CA, USA).

Histological study and densitometry analysis

Fontana-Masson stain was performed using a Fontana-Masson staining kit (IHC WORLD, GA, USA) according to the manufacture’s protocol. Briefly, the dorsal skin of guinea pigs fixed in 4% paraformaldehyde for 24 h and embedded in paraffin. Sections, approximately 4 μm thick, were stained with Fontana-Masson staining solution. Melanin production was

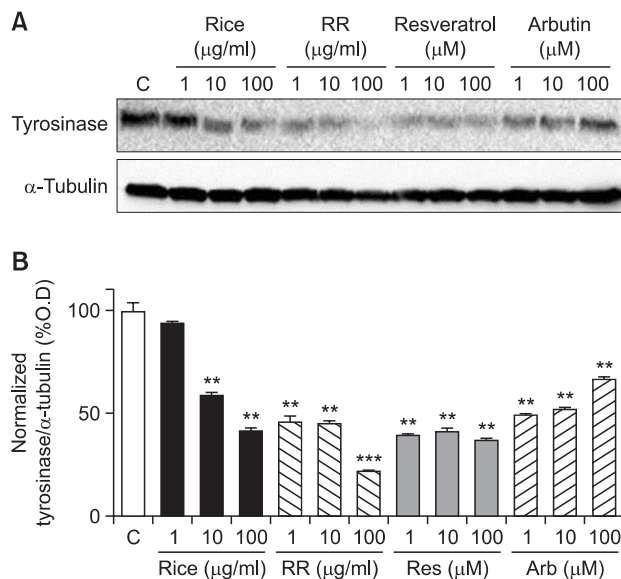


Fig. 2. Tyrosinase expression in melan-a cells. Melan-a cells were treated with each sample for 72 h. Forty micrograms of total protein from the cell lysates were used for western blot analysis (A). Tyrosinase expression was normalized to that of α-tubulin. Significance was determined using one-way ANOVA followed by Tukey’s multiple comparison test. ***p*<0.01 and ****p*<0.001 indicate statistically significant differences compared to the control.

measured in a 435×325 μm area of stained section. Densitometry analysis for the skin areas was conducted using the imaging software NIS elements version 4.0 (Nikon, Japan).

Statistical analysis

All experiments were carried out in triplicate. The data are expressed as means ± standard deviation (SD). Statistical comparisons between different groups were performed using one-way analysis of variance (ANOVA) with Tukey’ multiple comparisons test. The level of statistical significance was set at **p*<0.05, ***p*<0.01, and ****p*<0.001.

RESULTS

Analysis of resveratrol in genetically modified rice

We measured content of resveratrol in RR using a HPLC. The retention time of resveratrol is shown in Fig. 1A. Resveratrol content was calculated by constructing a standard calibration curve. The resveratrol content in RR was 0.246 μg/mg. But, resveratrol in rice which used a as control sample was not measured under the same analytical conditions (Fig. 1B).

Inhibitory effect of RR on tyrosinase expression in melan-a cells

We found the inhibitory effect of RR on tyrosinase expression in melan-a cells by western blot analysis. Melan-a cells were treated with RR at concentrations of 1, 10, or 100 μg/mL for 3 days. Arbutin, a potential whitening agent, was used as the positive compound in this study. As shown Fig. 2, resveratrol decreased tyrosinase expression in melan-a cells. Interestingly, RR at a concentration of 100 μg/mL showed a more highly inhibitory effect than that of resveratrol.

Depigmentation effects of RR on UVB-induced hyperpigmentation in guinea pigs

Hyperpigmentation in the dorsal skin of brown guinea pigs was induced by UVB irradiation. Changes in dorsal skin pigmentation were observed after 1 week of UVB treatment, and the maximum pigmentation of dorsal skin was induced after 2 weeks. We evaluated the anti-melanogenic efficacy of RR by comparing it with that of each material applied alone. Each of resveratrol and rice decreased dorsal skin pigmentation. Interestingly, RR produced a stronger depigmentation effect than that of resveratrol or rice (Fig. 3), suggesting that RR treated group has a synergistic effect.

Contrary to the results obtained with the Dermalab® Combo system, visual differences in skin color between the dorsal skin from the rice- and RR-treated groups were not significant (Fig. 4A). Therefore, we extracted melanin from the epidermis using a sodium hydroxide solution to confirm the significant reduction of melanin in the RR-treated group (Fig. 4B).

Histological change of epidermal skin by treatment of RR

Epidermal melanin content was measured by Fontana-Masson staining after treatment with resveratrol, rice, RR, or

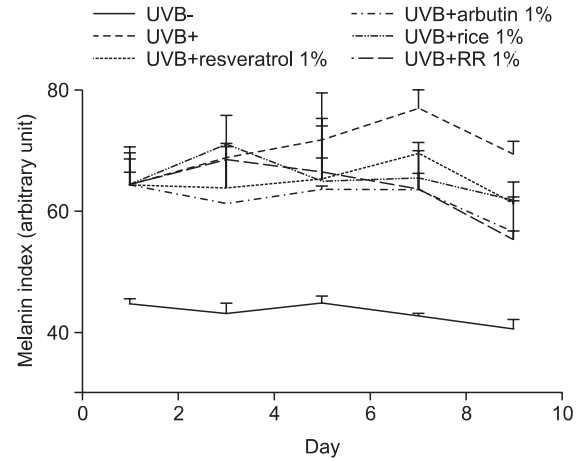


Fig. 3. Measurements of skin color. Hyperpigmentation of the brown guinea pigs skin was induced by UVB irradiation. The guinea pigs were exposed to 390 mJ/cm² UVB radiation 3 times per week for 2 weeks. After UVB irradiation, each material (1% resveratrol with UVB, 1% arbutin with UVB, 1% rice extract with UVB, and 1% RR extract with UVB) was applied for 9 days. We daily measured change of skin color using a Dermalab® Combo system.

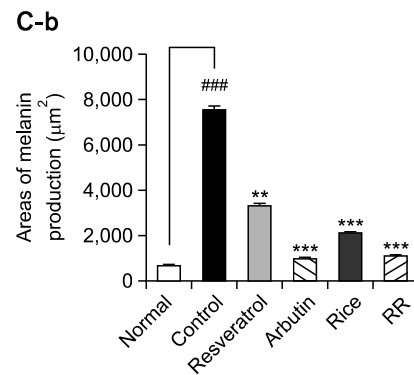
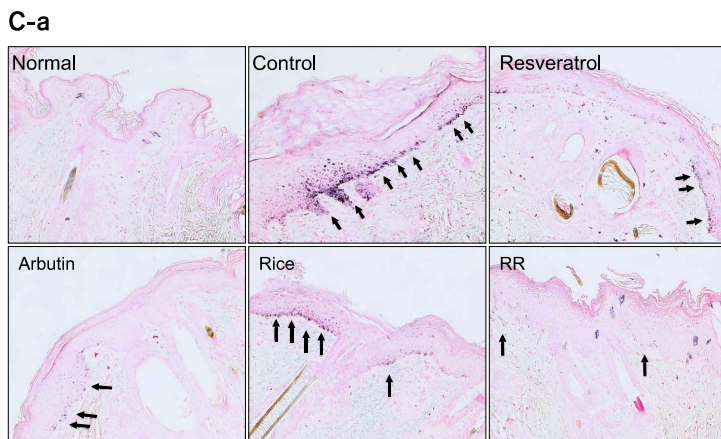
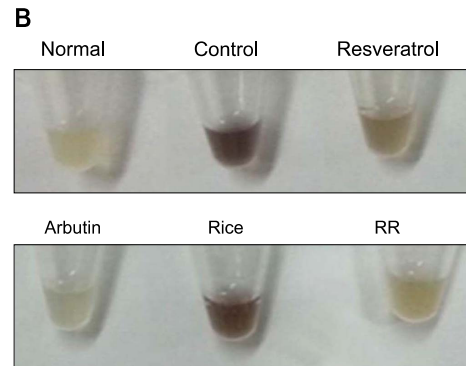
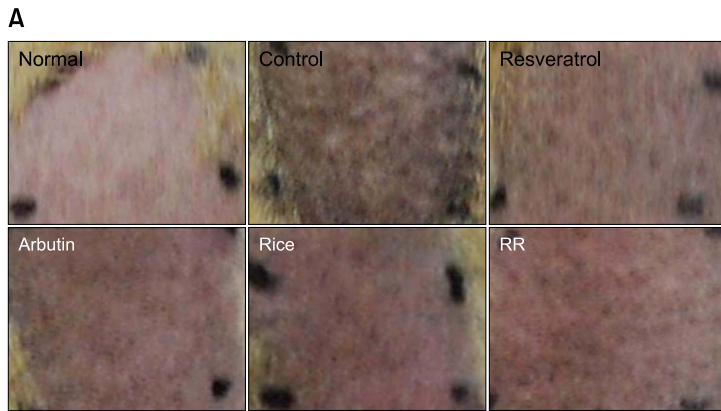


Fig. 4. A visible decrease and histological change in hyperpigmentation. The treated region was divided into 6 areas; Normal (Nor) (UVB-), Control (Con) (UVB+), Resveratrol (Res) (1% resveratrol with UVB), Arbutin (Arb) (1% arbutin with UVB), Rice (1% rice extract with UVB) and RR (1% RR extract with UVB). Representative features of the dorsal skin of brown guinea pigs were obtained after treatment of the animals for 9 days (A). Melanin was extracted from the epidermis using a sodium hydroxide solution (B). Epidermal melanin production was detected by Fontana-Masson stain. Arrows indicate melanin (C-a). Densitometry analysis of the areas was conducted using the NIS elements version 4.0 imaging software (C-b). One-way analysis of variance (ANOVA) with Tukey' multiple comparisons test was used for statistical analyses. ###*p*<0.001 indicate statistically significant differences compared to the normal. ***p*<0.01 and ****p*<0.001. indicate statistically significant differences compared to the control.

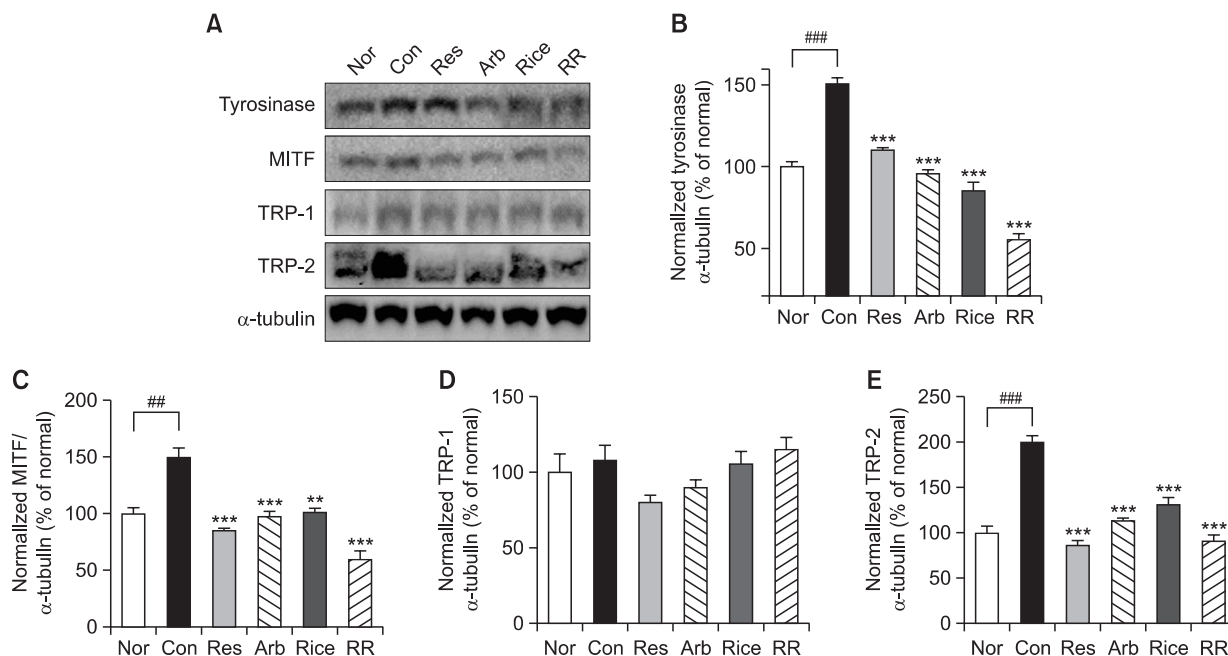


Fig. 5. Effects of resveratrol, arbutin, rice extract, and RR on melanogenesis-related proteins in UVB irradiated guinea pig dorsal skin. Forty micrograms of total protein from the skin tissue lysates [Nor (UVB-), Con (UVB+), Res (1% resveratrol with UVB), Arb (1% arbutin with UVB), Rice (1% rice extract with UVB) and RR (1% RR extract with UVB)] were used for western blot analysis (A). For western blot analysis, the data are represented as the relative density of tyrosinase (B), MITF (C), TRP-1 (D), and TRP-2 (E) bands normalized to α -tubulin. One-way analysis of variance (ANOVA) with Tukey' multiple comparisons test was used for statistical analyses. # p <0.01 and ### p <0.001 indicate statistically significant differences compared to the normal. ** p <0.01 and *** p <0.001 indicate statistically significant differences compared to the control.

arbutin. Epidermal melanin levels in skin tissue specimens treated with resveratrol, rice, RR, and arbutin were lower than those of the control group. RR produced a depigmentation effect which is similar to that of arbutin (Fig. 4C). RR significantly decreased melanin production (p <0.001) and its potency was similar to that of arbutin.

Effect on RR on down-regulation of melanogenic enzymes by western blot analysis

Melanin synthesis is controlled by an enzyme cascade including tyrosinase, MITF, TPR-1, and TRP-2 by western blot analysis. The expression of these enzymes was measured in the dorsal skin tissue after treatment with resveratrol, rice, RR, or arbutin. Epidermal protein levels of tyrosinase, MITF, TPR-1, and TRP-2 were significantly increased to 150.6%, 134.5%, 116.1%, and 270.1% of control levels, respectively, as a result of exposure to UVB irradiation. However, with the exception of TRP-1, protein expression was decreased by treatment with resveratrol, rice, RR, and arbutin. RR showed a particularly strong inhibitory effect on the expression of tyrosinase, MITF, and TRP-2, which were expressed at 54.6%, 49.4%, and 120.2% of control levels, respectively (Fig. 5).

DISCUSSION

RR is a resveratrol-enriched transgenic rice that overexpresses the stilbene synthase gene isolated from the peanut (*Arachis hypogaea* var. Palkwang) and contains high levels of the resveratrol (Sobolev *et al.*, 2011). We hypothesized

that RR might possess biological activities similar to those of resveratrol or more active than that of resveratrol. Baek *et al.* reported that resveratrol-enriched rice might treat obesity in high-fat diet fed mice (Baek *et al.*, 2014). Our collaborative group reported that RR might act against metabolic syndrome and related diseases (Baek *et al.*, 2013; Baek *et al.*, 2014). Interestingly, RR shows synergistic effects in comparison that of each resveratrol or rice alone (Baek *et al.*, 2013; Baek *et al.*, 2014). Several reports show that resveratrol decreases the expression of tyrosinase (Franco *et al.*, 2012; Zheng *et al.*, 2012; Bae *et al.*, 2013; Park and Boo, 2013; Park *et al.*, 2014), and Jun *et al.* reported that gamma-oryzanol from rice extract dually inhibited cellular melanogenesis, too (Jun *et al.*, 2012). Because each of resveratrol and rice had anti-melanogenic effects, we expected that RR would produce synergistic anti-melanogenic effects and thus have some advantages over treatment with rice or resveratrol alone. To demonstrate positive and/or synergistic effects, we used an animal model to conduct multiple comparative studies of the anti-melanogenic effects of resveratrol, arbutin, rice extract, and RR extract. Before the *in vivo* experiments, we conducted *in vitro* experiments using the melan-a cells to investigate the decreasing effects of RR on the expression of tyrosinase, which is a key protein in the process of melanin synthesis. Melan-a cell is an immortal line of pigmented, non-tumorigenic mouse melanocytes that are syngeneic with B16 melanoma cells (Bennett *et al.*, 1987). In a previous report, we showed that resveratrol decreased tyrosinase expression in B16F10 mouse melanoma cells (Lee *et al.*, 2014). Therefore, the cells were also treated with resveratrol, with comparing its effects to those of RR. We

confirmed that it showed similar effects in melan-a cells. We found that treatment with resveratrol or rice extract inhibited tyrosinase expression. Interestingly, RR inhibited tyrosinase expression more strongly than did resveratrol or rice alone (Fig. 2). This result supported that RR might produce synergistic anti-melanogenic effects.

UVB-irradiated guinea pigs, a commonly used animal model for hyperpigmentation research, were used for the *in vivo* experiments reported herein (Kim *et al.*, 2008; Fujii *et al.*, 2011; Peng *et al.*, 2014). All were treated with a dose of 1% (w/v) sample. Hyperpigmentation was induced by 390 mJ/cm² UVB irradiation for 2 weeks. From that time, samples were applied to the dorsal skin of the guinea pigs. After 2 weeks of UVB irradiation, the skin color of the UVB-irradiated control group had uniformly changed into black. In our colorimetric analysis, although RR did not suppress pigmentation as rapidly as did arbutin (positive control), the skin lightening of the RR-treated group was equivalent to that of the arbutin-treated group at the end (Fig. 3).

In addition, histological change due to depigmenting effect of RR was observed using Fontana-Masson staining. Melanin is produced by melanocytes that are located in the epidermis and are stimulated by cytokines and growth factors released from UV-irradiated keratinocytes (Yamada *et al.*, 2013). We observed the increase of melanin in the epidermal skin of the UV-irradiated control group. However, UV-induced melanin production was decreased in the each groups treated with rice and resveratrol. The inhibitory effect of RR on melanin production was more potent than that of each rice extract or resveratrol (Fig. 4). To strengthen our understanding of the mechanisms underlying the depigmenting effects of RR, we measured the expression of tyrosinase, TRP-1, TRP-2, and MITF, which are involved in melanin synthesis by western blotting analysis. Initial melanin synthesis is controlled primarily through regulating tyrosinase. Tyrosinase converts tyrosine, the initial substrate for melanin synthesis, into L-DOPA. In addition, tyrosinase is involved in the next step of melanin synthesis, which is the conversion of DOPA into DOPAquinone (Moon *et al.*, 2012). Therefore, regulation of tyrosinase is a powerful strategy with which to decrease melanin synthesis. In our result, RR significantly inhibited tyrosinase expression in the dorsal skin of guinea pigs. After DOPAquinone is formed, it is converted into DOPAchrome. TRP-2 participates in the conversion of DOPAchrome to 5,6-dihydroxyindole-2-carboxylic acid, which is an intermediate in the synthesis of eumelanin. We found that treatment with RR inhibited TRP-2 expression in the dorsal skin; however, RR did not inhibit the expression of TRP-1, which is involved in the final step of eumelanin synthesis. Taken together, these results suggest that the depigmentation effect of RR may be a result of its suppression of melanin synthesis via regulation of tyrosinase. And that the anti-melanogenic effect of RR is more active than that of rice or resveratrol alone. Based on HPLC analysis, however, the amount of resveratrol in the skin tissue of RR-treated group (5.6 µg) was much less than that was measured in the resveratrol-treated group (18 mg). Interestingly, the depigmentation effect of RR was stronger than that of resveratrol, indicating that this effect of RR is not caused by resveratrol alone. It was supposed that there may be, therefore, a further factor which acting on hypopigmentation. Namely, rice may be an important candidate for regulation of melanogenesis. Rice (*Oryza sativa*) contains several types of lipids, including

triacylglycerols, monoacylglycerols, diacylglycerols, sterols, and free fatty acids (Hemavathy and Prabhakar, 1987), which might enhance the penetration of resveratrol into the skin tissue. Moreover, our study indicated that RR had no toxic effects (data not shown), and therefore it can be considered to be a safe natural source of whitening agents. Although synthetic chemicals such as arbutin, hydroquinone, and kojic acid have strong whitening effects, long term treatment with these compounds can produce negative side effects (Tse, 2010). In conclusion, resveratrol-enriched rice may be a novel, safe and effective natural source for skin whitening agent.

ACKNOWLEDGMENTS

This work was supported by a grant from the Next-Generation BioGreen 21 Program (No.PJ009511), Rural Development Administration, Republic of Korea.

REFERENCES

- Bae, S. J., Ha, Y. M., Kim, J. A., Park, J. Y., Ha, T. K., Park, D., Chun, P., Park, N. H., Moon, H. R. and Chung, H. Y. (2013) A novel synthesized tyrosinase inhibitor: (E)-2-((2,4-dihydroxyphenyl)diazenyl) phenyl 4-methylbenzenesulfonate as an azo-resveratrol analog. *Biosci. Biotechnol. Biochem.* **77**, 65-72.
- Baek, S. H., Chung, H. J., Lee, H. K., D'Souza, R., Jeon, Y., Kim, H. J., Kweon, S. J. and Hong, S. T. (2014) Treatment of obesity with the resveratrol-enriched rice DJ-526. *Sci. Rep.* **4**, 3879.
- Baek, S. H., Shin, W. C., Ryu, H. S., Lee, D. W., Moon, E., Seo, C. S., Hwang, E., Lee, H. S., Ahn, M. H., Jeon, Y., Kang, H. J., Lee, S. W., Kim, S. Y., D'Souza, R., Kim, H. J., Hong, S. T. and Jeon, J. S. (2013) Creation of resveratrol-enriched rice for the treatment of metabolic syndrome and related diseases. *PLoS one* **8**, e57930.
- Bennett, D. C., Cooper, P. J. and Hart, I. R. (1987) A line of non-tumorigenic mouse melanocytes, syngeneic with the B16 melanoma and requiring a tumour promoter for growth. *Int. J. Cancer* **39**, 414-418.
- Chen, Y. J., Chen, Y. Y., Lin, Y. F., Hu, H. Y. and Liao, H. F. (2013) Resveratrol inhibits alpha-melanocyte-stimulating hormone signaling, viability, and invasiveness in melanoma cells. *Evid. Based Complement. Alternat. Med.* **2013**, 632121.
- Franco, D. C., de Carvalho, G. S., Rocha, P. R., da Silva Teixeira, R., da Silva, A. D. and Raposo, N. R. (2012) Inhibitory effects of resveratrol analogs on mushroom tyrosinase activity. *Molecules* **17**, 11816-11825.
- Fujii, T., Ikeda, K. and Saito, M. (2011) Inhibitory effect of rose hip (*Rosa canina* L.) on melanogenesis in mouse melanoma cells and on pigmentation in brown guinea pigs. *Biosci. Biotechnol. Biochem.* **75**, 489-495.
- Hemavathy, J. and Prabhakar, J. V. (1987) Lipid composition of rice (*Oryza sativa* L.) bran. *J. Am. Oil Chem. Soc.* **64**, 1016-1019.
- Jun, H. J., Lee, J. H., Cho, B. R., Seo, W. D., Kang, H. W., Kim, D. W., Cho, K. J. and Lee, S. J. (2012) Dual inhibition of gamma-oryzanol on cellular melanogenesis: inhibition of tyrosinase activity and reduction of melanogenic gene expression by a protein kinase A-dependent mechanism. *J. Nat. Prod.* **75**, 1706-1711.
- Kim, J. H., Baek, S. H., Kim, D. H., Choi, T. Y., Yoon, T. J., Hwang, J. S., Kim, M. R., Kwon, H. J. and Lee, C. H. (2008) Downregulation of melanin synthesis by haginin A and its application to *in vivo* lightening model. *J. Invest. Dermatol.* **128**, 1227-1235.
- Lee, J. S., Park, K. Y., Min, H. G., Lee, S. J., Kim, J. J., Choi, J. S., Kim, W. S. and Cha, H. J. (2010) Negative regulation of stress-induced matrix metalloproteinase-9 by Sirt1 in skin tissue. *Exp. Dermatol.* **19**, 1060-1066.
- Lee, T. H., Seo, J. O., Baek, S. H. and Kim, S. Y. (2014) Inhibitory effects of resveratrol on melanin synthesis in ultraviolet B-induced pigmentation in Guinea pig skin. *Biomol. Ther.* **22**, 35-40.

- Manosroi, A., Chutoprapat, R., Abe, M., Manosroi, W. and Manosroi, J. (2012a) Anti-aging efficacy of topical formulations containing niosomes entrapped with rice bran bioactive compounds. *Pharm. Biol.* **50**, 208-224.
- Manosroi, A., Ruksiriwanich, W., Abe, M., Manosroi, W. and Manosroi, J. (2012b) Transfollicular enhancement of gel containing cationic niosomes loaded with unsaturated fatty acids in rice (*Oryza sativa*) bran semi-purified fraction. *Eur. J. Pharm. Biopharm.* **81**, 303-313.
- Moon, E., Kim, A. J. and Kim, S. Y. (2012) Sarsasapogenin Increases Melanin Synthesis via Induction of Tyrosinase and Microphthalmia-Associated Transcription Factor Expression in Melan-a Cells. *Biomol. Ther.* **20**, 340-345.
- Newton, R. A., Cook, A. L., Roberts, D. W., Leonard, J. H. and Sturm, R. A. (2007) Post-transcriptional regulation of melanin biosynthetic enzymes by cAMP and resveratrol in human melanocytes. *J. Invest. Dermatol.* **127**, 2216-2227.
- Niles, R. M., McFarland, M., Weimer, M. B., Redkar, A., Fu, Y. M. and Meadows, G. G. (2003) Resveratrol is a potent inducer of apoptosis in human melanoma cells. *Cancer Lett.* **190**, 157-163.
- Ohguchi, K., Tanaka, T., Ito, T., Inuma, M., Matsumoto, K., Akao, Y. and Nozawa, Y. (2003) Inhibitory effects of resveratrol derivatives from dipterocarpaceae plants on tyrosinase activity. *Biosci. Biotechnol. Biochem.* **67**, 1587-1589.
- Park, J. and Boo, Y. C. (2013) Isolation of resveratrol from *Vitis viniferae* caulis and its potent inhibition of human tyrosinase. *Evid. Based Complement. Alternat. Med.* **2013**, 645257.
- Park, J., Park, J. H., Suh, H. J., Lee, I. C., Koh, J. and Boo, Y. C. (2014) Effects of resveratrol, oxyresveratrol, and their acetylated derivatives on cellular melanogenesis. *Arch. Dermatol. Res.* **306**, 475-487.
- Peng, L. H., Liu, S., Xu, S. Y., Chen, L., Shan, Y. H., Wei, W., Liang, W. Q. and Gao, J. Q. (2013) Inhibitory effects of salidroside and paeonol on tyrosinase activity and melanin synthesis in mouse B16F10 melanoma cells and ultraviolet B-induced pigmentation in guinea pig skin. *Phytomedicine* **20**, 1082-1087.
- Peng, L. H., Xu, S. Y., Shan, Y. H., Wei, W., Liu, S., Zhang, C. Z., Wu, J. H., Liang, W. Q. and Gao, J. Q. (2014) Sequential release of salidroside and paeonol from a nanosphere-hydrogel system inhibits ultraviolet B-induced melanogenesis in guinea pig skin. *Int. J. Nanomedicine* **9**, 1897-1908.
- Seo, M. Y., Chung, S. Y., Choi, W. K., Seo, Y. K., Jung, S. H., Park, J. M., Seo, M. J., Park, J. K., Kim, J. W. and Park, C. S. (2009) Anti-aging effect of rice wine in cultured human fibroblasts and keratinocytes. *J. Biosci. Bioeng.* **107**, 266-271.
- Shimoda, H., Terazawa, S., Hitoe, S., Tanaka, J., Nakamura, S., Matsuda, H. and Yoshikawa, M. (2012) Changes in ceramides and glucosylceramides in mouse skin and human epidermal equivalents by rice-derived glucosylceramide. *J. Med. Food* **15**, 1064-1072.
- Sobolev, V. S., Khan, S. I., Tabanca, N., Wedge, D. E., Manly, S. P., Cutler, S. J., Coy, M. R., Becnel, J. J., Neff, S. A. and Gloer, J. B. (2011) Biological activity of peanut (*Arachis hypogaea*) phytoalexins and selected natural and synthetic Stilbenoids. *J. Agric. Food Chem.* **59**, 1673-1682.
- Song, Y. M., Ha, Y. M., Kim, J. A., Chung, K. W., Uehara, Y., Lee, K. J., Chun, P., Byun, Y., Chung, H. Y. and Moon, H. R. (2012) Synthesis of novel azo-resveratrol, azo-oxyresveratrol and their derivatives as potent tyrosinase inhibitors. *Bioorg. Med. Chem. Lett.* **22**, 7451-7455.
- Tse, T. W. (2010) Hydroquinone for skin lightening: safety profile, duration of use and when should we stop? *J. Dermatol. Treat.* **21**, 272-275.
- Wu, Z., Uchi, H., Morino-Koga, S., Shi, W. and Furue, M. (2014) Resveratrol inhibition of human keratinocyte proliferation via SIRT1/ARNT/ERK dependent downregulation of aquaporin 3. *J. Dermatol. Sci.* **75**, 16-23.
- Yamada, T., Hasegawa, S., Inoue, Y., Date, Y., Yamamoto, N., Mizutani, H., Nakata, S., Matsunaga, K. and Akamatsu, H. (2013) Wnt/beta-catenin and kit signaling sequentially regulate melanocyte stem cell differentiation in UVB-induced epidermal pigmentation. *J. Invest. Dermatol.* **133**, 2753-2762.
- Zheng, Z. P., Tan, H. Y. and Wang, M. (2012) Tyrosinase inhibition constituents from the roots of *Morus australis*. *Fitoterapia* **83**, 1008-1013.



(19) 대한민국특허청(KR)
(12) 공개특허공보(A)

(11) 공개번호 10-2009-0019882
 (43) 공개일자 2009년02월25일

- | | |
|--|---|
| <p>(51) Int. Cl.
 <i>A23L 1/10</i> (2006.01) <i>A23L 1/182</i> (2006.01)
 <i>A01H 1/00</i> (2006.01) <i>C12N 15/29</i> (2006.01)</p> <p>(21) 출원번호 10-2009-0004130(분할)
 (22) 출원일자 2009년01월19일
 심사청구일자 2009년01월19일</p> <p>(62) 원출원 특허 10-2006-0073352
 원출원일자 2006년08월03일
 심사청구일자 2006년08월03일</p> | <p>(71) 출원인
 대한민국(관리부서:농촌진흥청)
 경기 수원시 권선구 서둔동 250번지</p> <p>(72) 발명자
 백소현
 전라북도 익산시 평화동 제일아파트 102동 1306호
 신운철
 전라북도 익산시 부송동 리젠시빌 505동 603호
 (뒷면에 계속)</p> <p>(74) 대리인
 특허법인명문</p> |
|--|---|

전체 청구항 수 : 총 1 항

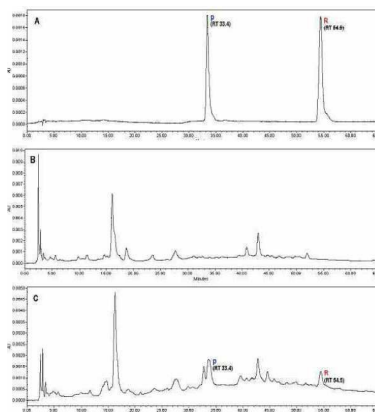
(54) 레스베라트롤 및 피세이드를 함유한 쌀

(57) 요약

본 발명은 항암, 항고지혈증, 항혈전작용 등의 다양한 약리 효과를 가지는 레스베라트롤을 함유하는 쌀에 관한 것으로, 더욱 상세하게는 레스베라트롤을 암호화하는 유전자가 세포내에 도입된 형질전환 벼 종자 및 벼 식물체로부터 생산할 수 있는 레스베라트롤을 함유하는 쌀에 관한 것이다.

본 발명에 의하면 레스베라트롤 합성 유전자를 이용하여 레스베라트롤 고함유 작물을 개발할 수 있으며, 특히 레스베라트롤 생합성 벼는 식용 및 화장품, 음료, 사료 등 다양한 가공품의 생산에 널리 활용될 수 있을 것이다.

대표도 - 도7



관인생략

출원번호통지서

출원일자 2013.07.30
 특기사항 심사청구(유) 공개신청(무)
 출원번호 10-2013-0090470 (접수번호 1-1-2013-0692848-27)
 출원인명칭 가천대학교 산학협력단(2-2004-037632-4)
 대리인성명 손민(9-1999-000420-6)
 발명자성명 김선여 박수철 백소현 전봉균 이택환
 발명의명칭 레스베라트를 생합성 발아현미 추출물을 함유하는 피부미백용 조성물

특 허 청 장

<< 안내 >>

1. 귀하의 출원은 위와 같이 정상적으로 접수되었으며, 이후의 심사 진행상황은 출원번호를 통해 확인하실 수 있습니다.
2. 출원에 따른 수수료는 접수일로부터 다음날까지 동봉된 납입영수증에 성명, 납부자번호 등을 기재하여 가까운 우체국 또는 은행에 납부하여야 합니다.
 ※ 납부자번호 : 0131(기관코드) + 접수번호
3. 귀하의 주소, 연락처 등의 변경사항이 있을 경우, 즉시 [출원인코드 정보변경(경정), 정정 신고서]를 제출하여야 출원 이후의 각종 통지서를 정상적으로 받을 수 있습니다.
 ※ 특허로(patent.go.kr) 접속 > 민원서식다운로드 > 특허법 시행규칙 별지 제5호 서식
4. 특허(실용신안등록)출원은 명세서 또는 도면의 보정이 필요한 경우, 등록결정 이전 또는 의견서 제출기간 이내에 출원서에 최초로 첨부된 명세서 또는 도면에 기재된 사항의 범위 안에서 보정할 수 있습니다.
5. 외국으로 출원하고자 하는 경우 PCT 제도(특허·실용신안)나 마드리드 제도(상표)를 이용할 수 있습니다. 국내출원일을 외국에서 인정받고자 하는 경우에는 국내출원일로부터 일정한 기간 내에 외국에 출원하여야 우선권을 인정받을 수 있습니다.
 ※ 제도 안내 : <http://www.kipo.go.kr>-특허마당-PCT/마드리드
 ※ 우선권 인정기간 : 특허·실용신안은 12개월, 상표·디자인은 6개월 이내
 ※ 미국특허상표청의 선출원을 기초로 우리나라에 우선권주장출원 시, 선출원이 미공개상태이면, 우선일로부터 16개월 이내에 미국특허상표청에 [전자적교환허가서(PTO/SB/39)]를 제출하거나 우리나라에 우선권 증명서류를 제출하여야 합니다.
6. 본 출원사실을 외부에 표시하고자 하는 경우에는 아래와 같이 하여야 하며, 이를 위반할 경우 관련법령에 따라 처벌을 받을 수 있습니다.
 ※ 특허출원 10-2010-0000000, 상표등록출원 40-2010-0000000
7. 기타 심사 절차에 관한 사항은 동봉된 안내서를 참조하시기 바랍니다.