

RESEARCH ARTICLE

# Combining $\alpha$ -Radioimmunotherapy and Adoptive T Cell Therapy to Potentiate Tumor Destruction

Jérémy Ménager<sup>1,2,3</sup>, Jean-Baptiste Gorin<sup>1,2,3</sup>, Catherine Maurel<sup>1,2,3</sup>, Lucile Drujont<sup>4</sup>, Sébastien Gouard<sup>1,2,3</sup>, Cédric Louvet<sup>4</sup>, Michel Chérel<sup>1,2,3,5</sup>, Alain Faivre-Chauvet<sup>1,2,3,6</sup>, Alfred Morgenstern<sup>7</sup>, Frank Bruchertseifer<sup>7</sup>, François Davodeau<sup>1,2,3</sup>, Joëlle Gaschet<sup>1,2,3</sup>, Yannick Guilloux<sup>1,2,3</sup>\*

**1** CRCNA—UMR 892 INSERM, Nantes, France, **2** 6299 CNRS, Nantes, France, **3** Université de Nantes, Nantes, France, **4** INSERM UMR 1064 –ITUN, Nantes, France, **5** Institut de Cancérologie de l'Ouest, Saint-Herblain, France, **6** CHU Nantes, Nuclear Medicine Department, Nantes, France, **7** European Commission, Joint Research Centre, Institute for Transuranium Elements, Karlsruhe, Germany

\* These authors contributed equally to this work.

\* [yannick.guilloux@univ-nantes.fr](mailto:yannick.guilloux@univ-nantes.fr)



**OPEN ACCESS**

**Citation:** Ménager J, Gorin J-B, Maurel C, Drujont L, Gouard S, Louvet C, et al. (2015) Combining  $\alpha$ -Radioimmunotherapy and Adoptive T Cell Therapy to Potentiate Tumor Destruction. PLoS ONE 10(6): e0130249. doi:10.1371/journal.pone.0130249

**Editor:** Hiroshi Shiku, Mie University Graduate School of Medicine, JAPAN

**Received:** February 26, 2015

**Accepted:** May 19, 2015

**Published:** June 22, 2015

**Copyright:** © 2015 Ménager et al. This is an open access article distributed under the terms of the [Creative Commons Attribution License](https://creativecommons.org/licenses/by/4.0/), which permits unrestricted use, distribution, and reproduction in any medium, provided the original author and source are credited.

**Data Availability Statement:** All relevant data are within the paper and its Supporting Information files.

**Funding:** This work has been carried out thanks to the support of the Labex IGO project (n° ANR-11-LABX-0016-01) and the Labex IRON project (n° ANR-11-LABX-0018-01) funded by the «Investissements d'Avenir» French Government program, managed by the French National Research Agency (ANR). This work was also supported by grants from La Ligue Contre le Cancer, and from the Pays de la Loire Council "Nucléaire pour la Santé" (NucSan). J-B. G. and J. M. are supported by grants from the French Ministry of Research and Higher

## Abstract

Ionizing radiation induces direct and indirect killing of cancer cells and for long has been considered as immunosuppressive. However, this concept has evolved over the past few years with the demonstration that irradiation can increase tumor immunogenicity and can actually favor the implementation of an immune response against tumor cells. Adoptive T-cell transfer (ACT) is also used to treat cancer and several studies have shown that the efficacy of this immunotherapy was enhanced when combined with radiation therapy.  $\alpha$ -Radioimmunotherapy ( $\alpha$ -RIT) is a type of internal radiotherapy which is currently under development to treat disseminated tumors.  $\alpha$ -particles are indeed highly efficient to destroy small cluster of cancer cells with minimal impact on surrounding healthy tissues. We thus hypothesized that, in the setting of  $\alpha$ -RIT, an immunotherapy like ACT, could benefit from the immune context induced by irradiation. Hence, we decided to further investigate the possibilities to promote an efficient and long-lasting anti-tumor response by combining  $\alpha$ -RIT and ACT. To perform such study we set up a multiple myeloma murine model which express the tumor antigen CD138 and ovalbumine (OVA). Then we evaluated the therapeutic efficacy in the mice treated with  $\alpha$ -RIT, using an anti-CD138 antibody coupled to bismuth-213, followed by an adoptive transfer of OVA-specific CD8<sup>+</sup> T cells (OT-I CD8<sup>+</sup> T cells). We observed a significant tumor growth control and an improved survival in the animals treated with the combined treatment. These results demonstrate the efficacy of combining  $\alpha$ -RIT and ACT in the MM model we established.

Education. A. M. and F. B. are supported by the European Commission. The funders had no role in study design, data collection and analysis, decision to publish, or preparation of the manuscript.

**Competing Interests:** The authors declare that the research was conducted in the absence of any commercial or financial relationships that could be construed as a potential conflict of interest.

## Introduction

Radiation therapy is one of the most efficient form of cancer therapy, and is used in the treatment of more than half of all cancer patients [1,2]. Ionizing radiation is known for its direct cytotoxic action on tumor cells [3] as well as the radiation-induced bystander effects which can destroy surrounding malignant cells [4–6]. Furthermore, impact of local radiotherapy on tumor immunity and immune cell activation has also been documented. Indeed ionizing radiation delivered on tumor cells and on the tumor cell microenvironment induce increased expression of MHC-peptide complexes [7–9], death receptor [10] as well as the release of various danger signals such as Heat shock proteins (HSPs), danger associated molecular patterns (DAMPs), or others cytokines [11,12]. Interestingly, several studies have demonstrated that radiation therapy can induce tumor regression through the development of an adaptive immune response dependent on tumor-specific T-lymphocytes [8,13–15]. These studies gave the first hints that radiation therapy and immunotherapies which had been so far envisioned as separate cancer treatment approaches could actually be combined to provide an enhanced anti-tumor response. During the last two decades, the improved understanding of cancer pathogenesis has led to the extensive development of various active and passive immunotherapy strategies. While active immunotherapies, like cancer vaccines, attempt to stimulate the patient immune system to trigger an anti-tumor response, passive immunotherapies involve the injection of molecules (e.g. antibodies) or immune cells to directly target the tumor cells [16]. Adoptive T-cell transfer (ACT) is a passive immunotherapy consisting in the infusion of large number of autologous or allogeneic lymphocytes with antitumor activity which have been amplified *ex vivo* [17]. Such approach has been largely investigated in melanoma patients through reinfusion of autologous tumor infiltrating lymphocytes (TIL) [18]. Also ACT on its own can induce an anti-tumor response, several preclinical and clinical studies have demonstrated that its efficiency was strengthened when combined with external irradiation [19–22]. Besides inducing lymphodepletion, ionizing radiation was shown to enhance ACT efficacy by raising tumor immunogenicity and by promoting an abscopal effect which consists in the inhibition of distant tumors after local irradiation [8,20,22].

Radioimmunotherapy (RIT) represents a selective internal radiation therapy suited for the treatment of disseminated cancers. RIT involves the use of a monoclonal antibody (mAb) to deliver radionuclides directly to the targeted tumor cells [23–26]. In the clinic, this approach has been particularly successful for the treatment of non-Hodgkin lymphoma patients using anti-CD20 mAb coupled to two  $\beta$ -emitters, Yttrium-90 (Zevalin) and Iodine-131 (Bexxar) [27].  $\alpha$ -particles which are highly cytotoxic agents are also under development for clinical applications.  $\alpha$ -emitters are characterized by a high linear energy transfer (LET), in the range of 100 KeV/ $\mu$ m, a very high energy deposit over a very short path length (50–100  $\mu$ m) and are poorly sensitive to hypoxia [28]. Therefore, such type of radionuclide is very efficient for targeting and killing disseminated tumor cells with minimal impact on healthy tissues and can be used in the treatment of different type of cancers [29,30] and in particular in multiple myeloma (MM) [31]. To date, *in vivo* interactions of  $\alpha$ -radiation with the immune system, such as the release of DAMPs, for example, have been sparsely documented. We recently demonstrated that bismuth-213, an  $\alpha$ -emitter, can induce immunogenic cell death of cancer cells and stimulate an anti-tumor response [32]. Furthermore, very few studies combining  $\alpha$ -RIT and immunotherapy have been performed [33]. Hence, we sought to investigate combining  $\alpha$ -RIT and ACT, to study if, in this specific setting, irradiation could also reinforce the immunotherapy approach and help promote an efficient and long-lasting anti-tumor response.

In order to perform this study, we needed a tumor model expressing both a target antigen for  $\alpha$ -RIT and a specific MHC-peptide complex that can be recognized by tumor-specific

T-cells. Therefore, we established an immunocompetent MM mouse model, where the tumor is induced by injection of the 5T33 MM cell line, which expresses the CD138 antigen (syndecan-1), a hallmark of all MM cells, and ovalbumin (OVA).  $\alpha$ -RIT was then performed by injection of an anti-CD138 antibody coupled to bismuth-213. Subsequently, ACT consisted in the injection of OVA-specific CD8<sup>+</sup> T cells (OT-I CD8<sup>+</sup> T cells). Here, we report that this model is suitable to study  $\alpha$ -RIT and ACT combination, and that OT-I CD8<sup>+</sup> T-cells migrate to the tumor site. In correlation, with those data, we demonstrated that such combined treatment results in a significant tumor growth inhibition associated with an improved survival.

## Materials and Methods

### Animals

Female C57BL6/KaLwRij mice (Harlan CPB, Horst, The Netherlands) were used for tumor engraftment and treatments. Animals were housed in UTE animal facility (SFR François Bonamy, IRS-UN, University of Nantes, licence number: B-44-278), under conventional conditions. All mice were 8 to 10 weeks old at the beginning of each experiment. Experiments performed in this study were approved by the Animal Experimentation Ethic Committee of the Pays-de-Loire (protocol n° CEEA.2013.2).

OT-I transgenic mice were used to get the OT-I CD8<sup>+</sup> T cells for ACT. These mice were obtained by first intercrossing OT-I TCR-transgenic mice (C57BL/6-Tg(TcraTcrb)1100Mjb/Crl) (Charles River, France) and CD45.1 congenic mice (B6.SJL-Ptprca Pepcb/BoyCrl) (Charles River, France) in order to track OT-I CD8<sup>+</sup> T cells in vivo using the CD45.1 expression. These mice were subsequently bred to C57BL/6 Rag1KO mice (CERFE—GIP Genopole, France, obtained through A. Savina, Curie Institute, France) and further intercrossed to generate an OT-I.CD45.1Rag1KO mouse line homozygous for each allele. Animals were housed and intercrossed at the INSERM UMR 1064—ITUN specific pathogen free animal facility.

### 5T33-OVA Multiple Myeloma Cells

5T33-OVA cell line (Ministère de l'enseignement supérieur et de la recherche, agreement n° 5663) was produced by modification of the original 5T33 murine MM cell line [34,35] kindly provided by Dr. Harvey Turner (Department of Nuclear Medicine, Fremantle Hospital, Western Australia) with the permission of Dr. J. Radl (TNO Institute, Leiden, The Netherlands). A sequence containing the cDNA coding for cytoplasmic Ovalbumin was obtained by BamHI-EcoRI digestion of the cytoplasmic Ovalbumin vector (Addgene). The fragment was cloned into BamHI and EcoRI sites of the retroviral vector pMX [36]. Phoenix-Ampho packaging cells (ATCC<sup>®</sup> CRL-3213) were then transiently transfected with the ovalbumin retroviral construct, supernatants were collected and used to transduce 5T33 cells. Three days after retroviral transduction, 5T33-OVA cells were sorted by flow cytometry (FACS ARIA III, BD) by using mAb 25-D1.16 (eBioscience), specific for H<sub>2</sub>K<sup>b</sup>/OVA<sub>257–264</sub> (SIINFEKL) complexes.

5T33-OVA cells were cultured in RPMI1640 medium (Gibco) containing 2 mM L-glutamine, and 10% heat-inactivated fetal calf serum (PAA) and were incubated at 37°C, 5% CO<sub>2</sub>, 95% humidity. Aliquots of early passaged cells were frozen in 10% dimethylsulfoxide, 90% FCS and stored under liquid nitrogen.

### 5T33-OVA Multiple Myeloma model

Syngeneic C57BL6/KaLwRij mice were subcutaneously injected with 2x10<sup>6</sup> 5T33 or 5T33-OVA in the right flank. On day 10 after tumor implantation, mice received  $\alpha$ -RIT treatment and on day 11 after tumor implantation, mice received ACT by intravenous injection (i.v.) of

OT-I CD8<sup>+</sup> T cells into the tail. Health status of tumor-bearing mice was monitored daily, and tumor growth was measured at specific time points using caliper. The mice were sacrificed when tumour reached a volume of 2500 mm<sup>3</sup>.

### OT-I cell generation and adoptive cell transfer (ACT)

Spleen and lymph nodes from OT-I transgenic mice were extracted under aseptic conditions and dissociated into single-cell suspensions. OT-I CD8<sup>+</sup> T cells were subsequently purified using CD8a<sup>+</sup> T Cell Isolation Kit II (Miltenyi Biotech, Bergish Gladbach, Germany) according to the manufacturer instructions. Efficacy of the selection was controlled by flow cytometry; the resulting cell suspension typically contained more than 80% of OT-I CD8<sup>+</sup> T cells.

Stimulation of OT-I CD8<sup>+</sup> T cells was done by incubating 1x10<sup>6</sup> purified OT-I CD8<sup>+</sup> T cells with 5x10<sup>6</sup> irradiated syngeneic C57BL6/KaLwRij mice spleen cells in 2 ml DMEM supplemented with 10% FCS (Life Technologies, Paisley, Scotland) containing 5  $\mu$ M Ovalbumin peptide SIINFEKL (OVA<sub>257–264</sub>), 5U/mL IL-2, and 20ng/ml murine IL-12. On day 3, the cultures were split into four aliquots and fed with fresh medium containing 5U/mL IL-2. On day 6, cells were harvested and washed with DMEM medium at least three times. Eleven days after 5T33-OVA MM cells graft, activated OT-I CD8<sup>+</sup> T cells were adoptively transferred into mice.

### Cytotoxicity assay

Before ACT, OT-I CD8<sup>+</sup> T cell effector function was assessed using a standard <sup>51</sup>Cr-release assay, against different target cells: 5T33, 5T33-OVA and 5T33 cells pulsed with 1  $\mu$ M OVA<sub>257–264</sub> peptide. Target cells were labeled with 75  $\mu$ Ci <sup>51</sup>Cr for 1 h at 37°C, washed four times with culture medium, and then plated at the indicated effector to target (E:T) cell ratio in a 96-well V-bottom plate. After a 4-h incubation at 37°C, 25  $\mu$ l of supernatant were removed from each well, mixed with 100  $\mu$ l of scintillation fluid, and <sup>51</sup>Cr activity was counted in a scintillation counter (MicroBeta, Perkin Elmer). Each test was performed in triplicate. The results are expressed as the percentage of lysis, which is calculated according to the following equation: (experimental release – spontaneous release)/(maximal release – spontaneous release)  $\times$  100, where experimental release represents the mean cpm for the target cells in the presence of effector cells, spontaneous release represents the mean cpm for target cells incubated without effector cells, and maximal release represents the mean cpm for target cells lysed with 1% Triton X-100 (Sigma).

### Antibody Radiolabeling and $\alpha$ -RIT treatment

The rat anti-mouse CD138 antibody was conjugated to 2-(4-isothiocyanatobenzyl)-cyclohexyl-diethylenetriaminepenta-acetic acid (SCN-CHX-A<sup>™</sup>-DTPA, Macrocyclics, Dallas, TX, USA). For radiolabeling, 100  $\mu$ g of this immunoconjugate was incubated with 160  $\pm$  6 MBq <sup>213</sup>Bi eluted from a <sup>225</sup>Ac/<sup>213</sup>Bi generator (Institute for Transuranium Elements, Karlsruhe, Germany) for 10 min at 37°C in 0.6 M sodium acetate (pH 5.3) and 0.01% ascorbic acid. The resulting <sup>213</sup>Bi-labeled immunoconjugate was purified from unbound <sup>213</sup>Bi by size exclusion chromatography using a PD-10 column (Sephadex G-25). Radiochemical purity was >95%, as determined by ITLC-SG using 0.1M citrate buffer pH 4.5. Treatment was initiated 10 days after tumor engraftment by i.v. injection in the tail vein of 3.7 MBq <sup>213</sup>Bi-labeled anti-mouse CD138 antibody (specific activity 946  $\pm$  35 kBq/ $\mu$ g).

## Antibodies and flow cytometry

When tumor reached a volume of 2500 mm<sup>3</sup>, the mice were sacrificed. Tumor, lymph nodes, spleen and blood were then harvested and made into single cell suspensions by mechanical disassociation.

Fluorochrome-conjugated mouse specific mAbs directed against CD45.1, CD8b antigens, isotype control mAbs and Fc block were purchased from BD Biosciences (Le Pont de Claix, France). Fluorochrome-conjugated mAbs directed against H<sub>2</sub>K<sup>b</sup>/OVA<sub>257–264</sub> complexes were purchased from eBioscience (Paris, France).

Cell surface staining was done using standard procedure in the presence of 0.1% BSA. Adequate isotypic controls were used in parallel. Stained samples were analyzed on a FACS Canto flow cytometer using Diva software (BD Biosciences) and on FACS Calibur flow cytometer using Cell Quest Pro software (BD biosciences).

## Statistical analysis

Tumor volumes were calculated via three measurements of tumor with caliper and using the formula  $4/3\pi \times r^3$ . Data were represented as mean  $\pm$  SD or SEM as indicated in each experiment. Comparisons between the groups were made using two-way analysis of variance (ANOVA) and by student's t test. The median survival of mice with the different treatments was calculated by using the Kaplan–Meier method and analyzed using log rank test. A p value of <0.05 was considered significant for all the experiments.

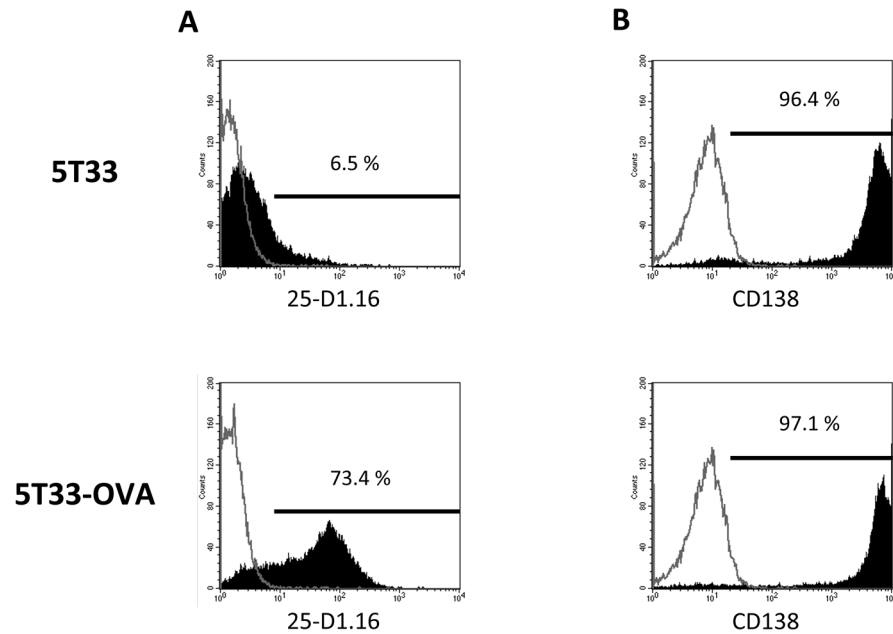
## Results

### 5T33-OVA phenotypic analysis

The prerequisite to evaluate the therapeutic effect of  $\alpha$ -RIT and ACT combination was to develop a suitable tumor model expressing two antigens, the first one allowing targeting with a radiolabeled antibody (CD138) and the second one for specific OT-I CD8<sup>+</sup> T cell recognition (H<sub>2</sub>K<sup>b</sup>/OVA<sub>257–264</sub> complexes). To do so, we transduced the 5T33 cells with the cytoplasmic ovalbumin gene and the resulting 5T33-OVA cells were purified by FACS sorting based on the expression of H<sub>2</sub>K<sup>b</sup>/OVA<sub>257–264</sub> complexes on the plasma membrane. The purity of the sorting was controlled by cell labeling with the 25-D1.16 antibody specific for H<sub>2</sub>K<sup>b</sup>/OVA<sub>257–264</sub> complexes. As shown in Fig 1A, 73.4% of 5T33-OVA cells expressed this MHC-peptide complex compared to parental 5T33 cells. Endogenous CD138 expression was also controlled to ensure that the transduction did not modify its expression on the 5T33-OVA cells. As shown in Fig 1B, respectively 96.4% and 97.1% of 5T33 and 5T33-OVA cells respectively were labeled by the anti-CD138 antibody. Together, these data demonstrate that 5T33-OVA cells express H<sub>2</sub>K<sup>b</sup>/OVA<sub>257–264</sub> complexes without altering the expression of CD138 antigen at the cell surface.

### *In vitro* Recognition of 5T33-OVA cells

To further characterize the 5T33-OVA cells, we performed a cytotoxicity assay to evaluate the recognition efficiency by OT-I CD8<sup>+</sup> T cells. For this experiment, we primed OT-I CD8<sup>+</sup> T-cells *in vitro* for 5 days. As shown in Fig 2, primed OT-I CD8<sup>+</sup> lymphocytes did not kill parental 5T33 cells (<5%), whereas 5T33-OVA cells and 5T33 pulsed with OVA<sub>257–264</sub> peptide were killed, with lysis of 17% to 59% and 28% to 73% respectively at the different E:T ratios. These data indicate that the 5T33-OVA express enough H<sub>2</sub>K<sup>b</sup>/OVA<sub>257–264</sub> complexes to be recognized by the OT-I T-cells. Moreover, we observe an efficient recognition of 5T33-OVA cells by OT-I T-cells of 5T33-OVA cells in association with the high level of H<sub>2</sub>K<sup>b</sup>/OVA<sub>257–264</sub> expression on 5T33-OVA cells seen by flow cytometry (Fig 1A).



**Fig 1. 5T33-OVA phenotypic analysis after transduction by a lentiviral vector encoding cytoplasmic ovalbumin (A) 5T33 and 5T33-OVA staining with PE-conjugated antibody 25-D1.16, which specifically recognizes the OVA peptide ‘SIINFEKL’ bound to the MHC class I molecule H-2K<sup>b</sup> and (B) staining of 5T33 and 5T33-OVA with APC-conjugated anti-mouse CD138 mAb. Flow cytometry was performed on a BD FACSCalibur Flow Cytometry System.**

doi:10.1371/journal.pone.0130249.g001

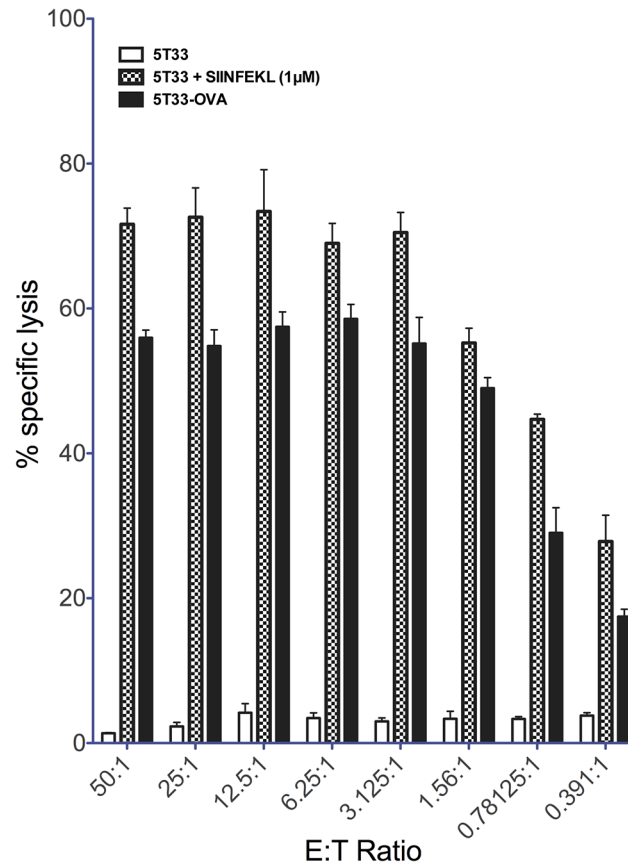
### 5T33-OVA *in vivo* tumor model

To complete the validation of our model, we investigated the *in vivo* growth capability of 5T33-OVA after subcutaneous injection. Such study was performed by injection of  $2 \times 10^6$  of 5T33 or 5T33-OVA in the right flank of C57BL6/KalwRij mice and tumor progression was monitored. As shown in Fig 3, no growth difference was detected between parental 5T33 and 5T33-OVA (2 way ANOVA,  $p < 0.05$ ). These data show that there is a minimum impact of OVA expression on tumor cell development *in vivo*.

### ACT using OT-I

To assess the impact of ACT on tumor growth,  $1 \times 10^6$ ,  $2 \times 10^6$  or  $5 \times 10^6$  OT-I CD8<sup>+</sup> T cells were injected intravenously in the mice tail vein, 11 days after subcutaneous tumor engraftment. As shown in Fig 4A, at day 25, mice injected with 2 or  $5 \times 10^6$  OT-I CD8<sup>+</sup> T cells exhibited a significant tumor growth reduction compared with mice receiving no treatment or receiving  $1 \times 10^6$  OT-I CD8<sup>+</sup> T cells ( $p < 0.001$ ). There was no significant difference between untreated mice and those receiving  $1 \times 10^6$  OT-I CD8<sup>+</sup> T cells ( $p > 0.05$ ).

OT-I CD8<sup>+</sup> T cells express the CD45.1 congenic marker while the C57BL6/KaLwRij mice are homozygous for the CD45.2 alloantigen. Thus the CD45.1 antigen enabled us to evaluate the ability of OT-I CD8<sup>+</sup> T cells to infiltrate the tumor *in vivo*. T-cell infiltrates were analyzed when the mice were sacrificed in between 25 and 27 days after tumor engraftment (Fig 4B). Tumors were mechanically dilacerated and cell suspensions were analyzed by flow cytometry to quantify OT-I CD8<sup>+</sup> T cells. The injected OT-I CD8<sup>+</sup> T cells were detectable in the tumor up to 14 days after injection and the proportion of OT-I CD8<sup>+</sup> T cells among CD8<sup>+</sup> T cells was higher in mice injected with  $5 \times 10^6$  OT-I CD8<sup>+</sup> T cells compared to mice injected with  $1 \times 10^6$  or  $2 \times 10^6$  OT-I CD8<sup>+</sup> T cells.



**Fig 2. *In vitro* recognition of 5T33-OVA.** Cytotoxic T-cell-mediated lysis of 5T33-OVA targets. T cells isolated from OT-I mice were activated using irradiated splenocytes loading with OVA<sub>257–264</sub> (SIINFEKL) peptide. *In vitro* T-cell-mediated cytotoxicity against 5T33-OVA was determined using a standard four-hour <sup>51</sup>Cr release assay at several effector-to-target ratios (E:T Ratio).

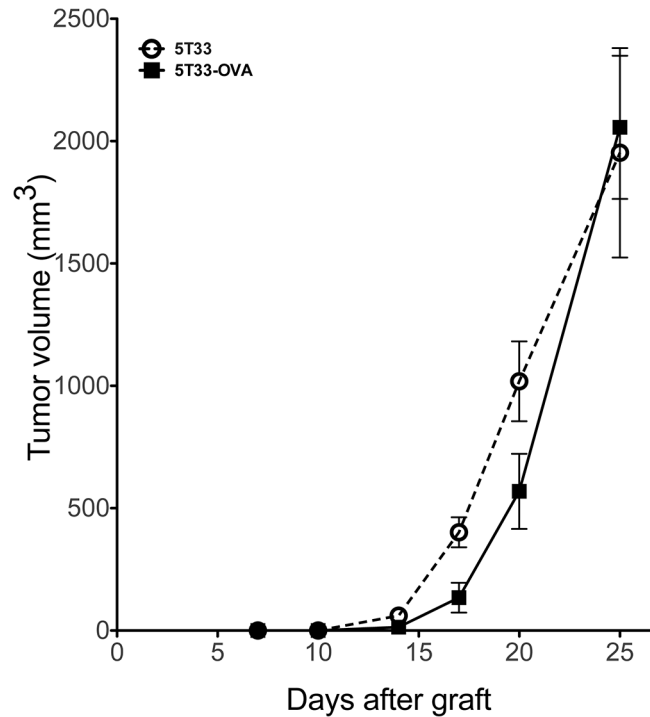
doi:10.1371/journal.pone.0130249.g002

These results demonstrated the ability of injected OT-I CD8+ T cells to reach and infiltrate the tumor. Since the injection of 2 or 5x10<sup>6</sup> OT-I CD8+ T cells had similar effects on tumor progression without toxicity, we decided to perform the ACT with 5x10<sup>6</sup> OT-I CD8+ T cells in order to optimize therapeutic efficacy.

### Combining $\alpha$ -RIT + ACT is the most efficient treatment towards tumor development

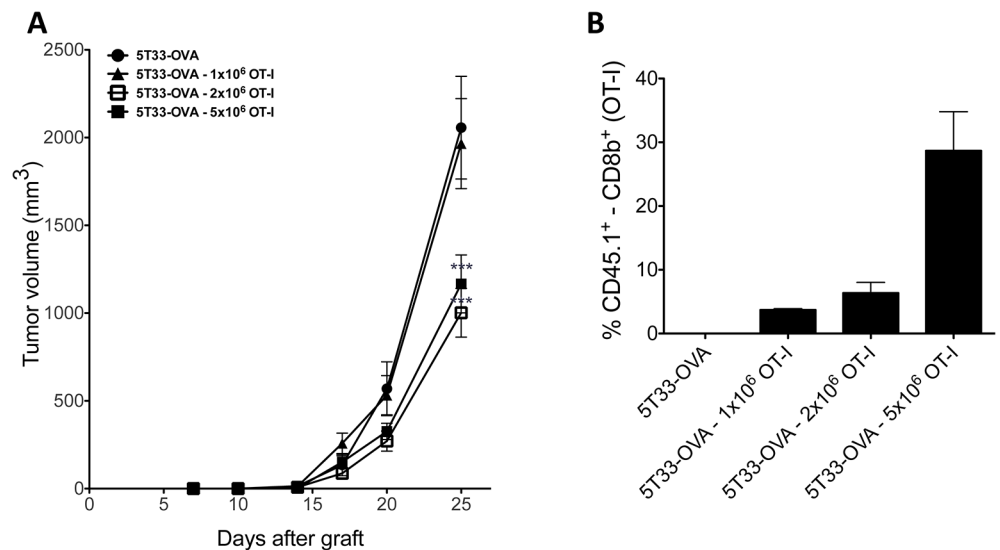
Next, we investigated whether the combination of  $\alpha$ -RIT with ACT could efficiently inhibit tumor growth and increase survival of mice grafted with 5T33-OVA.  $\alpha$ -RIT was performed 10 days after tumor engraftment at a time where 60.5% of the animals (23 mice on 35) had a small established tumor, with a mean volume of 17,67 ± 5,26 mm<sup>3</sup>. Since the radionuclide half-life is short (45.6 minutes), ACT was done 1 day after RIT, i.e 11 days after 5T33-OVA engraftment. Tumor growth was also evaluated for each treatment alone.

No significant difference was observed between tumor growth after  $\alpha$ -RIT treatment alone or ACT treatment alone (Fig 5A). However, mice receiving the combination of  $\alpha$ -RIT followed by ACT exhibited a significant decrease in tumor development compared to the control mice that received PBS or the ones that received RIT alone or ACT alone. Monitoring of those animals was also performed with regards to their survival after each treatment; the mice being



**Fig 3. *In vivo* tumor growth of 5T33-OVA.** Growth comparison of established tumors 5T33 versus 5T33-OVA. Animals were injected subcutaneously with  $2 \times 10^6$  tumor cells ( $n = 5$  mice per group).

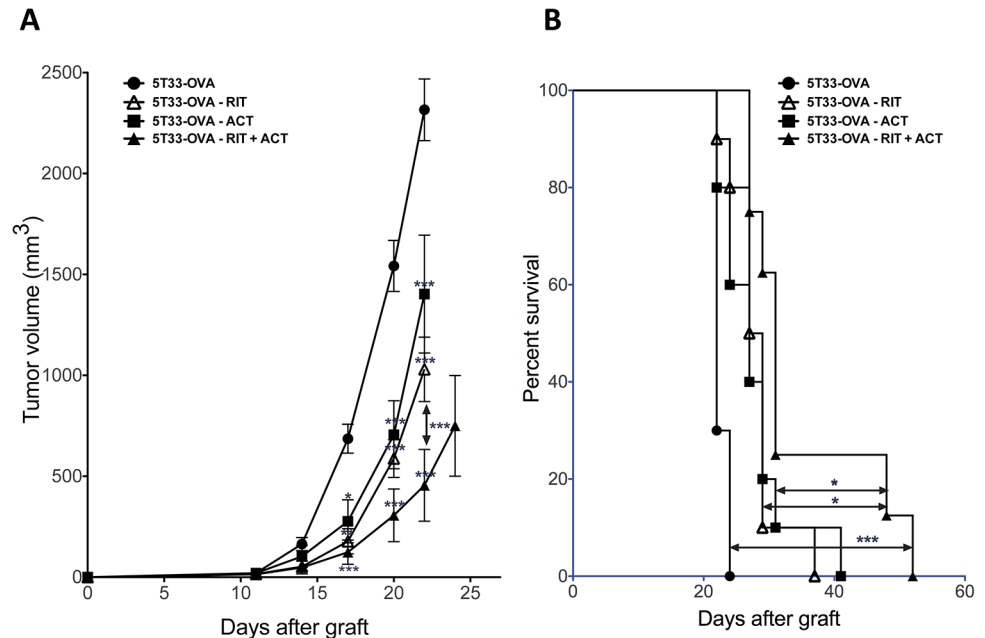
doi:10.1371/journal.pone.0130249.g003



**Fig 4. Adoptive OT-I T cell transfer.** (A), Dose response of 5T33-OVA tumor cells to adoptive transfer of OT-I CD8<sup>+</sup> T cells treatment. Animals were injected subcutaneously with  $2 \times 10^6$  tumor cells and received the indicated doses of OT-I CD8<sup>+</sup> T cells ( $n = 10$  mice per group). Tumor volume was determined by using a caliper. Data points represent mean  $\pm$  SD of 10 measures. \*\*\*  $p < 0.001$  as determined by two-way ANOVA and Bonferonni post-tests. (B), Tumors were explanted and single cell suspensions were prepared by grinding tumors in a tissu grinder. Cells were stained with monoclonal anti-CD8b PE and anti-CD45.1 FITC. Histograms represent the percentage of CD45.1<sup>+</sup> in CD8<sup>+</sup> cells.

doi:10.1371/journal.pone.0130249.g004





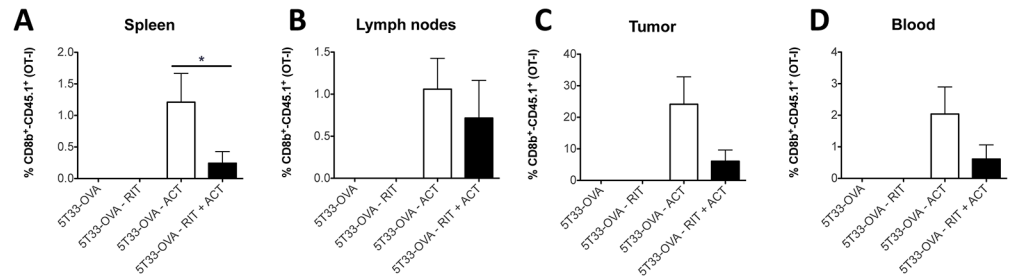
**Fig 5. Combination of RIT with adoptive immunotherapy inhibits tumor growth and prolongs survival.** (A), Animals were injected with  $2 \times 10^6$  tumor cells subcutaneously and received the indicated treatment ( $n = 8$  to 10 mice per group). Tumor volume was measured. Data points represent mean  $\pm$  SD. \*  $p < 0,05$ , \*\*  $p < 0,01$ , \*\*\*  $p < 0,001$  as determined by two-way ANOVA and Bonferonni post-tests. The combination of RIT + ACT or RIT alone or the ACT transfer alone significantly decrease tumor growth when compared with the control. The combination of RIT + ACT significantly decrease tumor growth when compared RIT alone or the ACT transfer alone. (B), Animals were injected subcutaneously with  $2 \times 10^6$  tumor cells and received the indicated treatment. The percentage of surviving mice was evaluated when tumor volume reach end-point of  $2500 \text{ mm}^3$ . The combination of RIT + ACT significantly increased survival (median survival of 31 days; log-rank, 0.0001) when compared with control or RIT alone (median survival of 28 days; log-rank, 0,0413) or the ACT transfer alone (median survival of 27 days; log-rank, 0,0391) cohorts. Statistical analysis were performed using non-parametric Mann-Whitney test.

doi:10.1371/journal.pone.0130249.g005

sacrificed when tumour reached an endpoint volume of  $2500 \text{ mm}^3$  (Fig 5B). Once again, there was a significant difference in median survival of mice received the combination of RIT and ACT (31 days) compared to mice receiving ACT alone (28 days,  $p = 0.0391$ ), or RIT alone (27 days,  $p = 0.0413$ ). Altogether these data demonstrated that combining RIT and ACT was the most efficient therapeutic approach in terms of tumor development and survival. We investigated the impact of irradiation with  $\alpha$ -particles on MHC class I or  $\text{H}_2\text{K}^b/\text{OVA}_{257-264}$  complex expression on 5T33-OVA cells *in vitro* (S1 File). No clear variation in the overall MHC class I expression was observed (Figure A in S1 File), however irradiation resulted in a transient increase of the  $\text{H}_2\text{K}^d/\text{OVA}_{257-264}$  complex expression (Figure B in S1 File) that is specifically recognized by OT-I CD8+ T cells and which might contribute to therapeutic efficacy of the combined treatment.

### OT-I CD8+ T cells persist within the tumor but also in the lymphoid organs and the periphery

To investigate the role of OT-I CD8+ T cells on tumor growth *in vivo*, we analyzed their persistence in the tumor as well as in the spleen, lymph nodes and in the blood, at the end point of the experiment (when the tumor reached  $2500 \text{ mm}^3$ ). Following treatment with ACT alone, OT-I CD8+ T cells represented 24% of CD8+ cells in the tumor compare to only 6% when ACT was combined with  $\alpha$ -RIT (Fig 6). Surprisingly, the therapeutic efficacy in this



**Fig 6. OT-I CD8<sup>+</sup> T cells persist within the tumor but also in the lymphoid organs and the periphery.** After the different treatment as indicated on the graph (n = 8 to 10 per group), when tumour reached a volume of 2500 mm<sup>3</sup>, the mice were sacrificed and spleen (A), lymph nodes (B), tumor (C) and blood (D) were harvested. Then, cells were stained with monoclonal anti-CD8b PE and anti-CD45.1 FITC. Histograms represent the percentage of CD45.1<sup>+</sup> in CD8<sup>+</sup> cells. Statistical analysis were performed using non-parametric Mann-Whitney test.

doi:10.1371/journal.pone.0130249.g006

experiment was inversely correlated with the amount of OT-I CD8<sup>+</sup> T cells found in the different organ we analyzed. Indeed, the anti-tumor response was most effective after  $\alpha$ -RIT combined with ACT than after ACT alone. This suggest that OT-I CD8<sup>+</sup> T cells disappear faster when the therapeutic efficacy is higher.

## Discussion

RIT and immunotherapy are two types of strategies developed for the treatment of diverse solid and disseminated cancers [29]. On one hand, RIT has been evaluated in animal models as well as in humans and has emerged as one of the most promising treatment option, particularly for hematologic malignancies [37]. However, despite progress in targeting and vectorisation, new combined therapies need to be evaluated in order to improve disease outcome. On the other hand, although many immunotherapies (e.g cytokines, cell therapies, tumor vaccines. . .) show potent anti-tumor responses *in vitro*, malignant cells can evade the immune system and produce factors that attenuate anti-tumor effects elicited by those immunotherapies [16].

Tumor response to vectorized or non vectorized radiation can lead to the emergence of an immune response including T lymphocyte-mediated immune response [15,38]. Moreover, radiation has a general impact on the tumor cells and immune system: enhancing peptide production, the expression of Fas [10], ICAM-I [7] and as well as MHC class I [8] and tumor antigen [7] expression in the tumor. These events result in a better recognition of the tumor by CTL.

Tumor-specific antibodies coupled to  $\alpha$ -particles can mediate tumor destruction by delivering radiation on the tumor site with acceptable exposure to surrounding healthy tissues and lead to increased tumor immunogenicity [32,33]. This prompted us to combine  $\alpha$ -RIT with CD8<sup>+</sup> T cells targeting a specific MHC class I peptide complex expressed on the tumor, also called ACT. This novel combination may potentiate  $\alpha$ -RIT and add a new perspective to established cancer treatments.

Thus, this study aimed to develop a tumor model in order to evaluate the relevance of combining  $\alpha$ -RIT and ACT consisting in the injection of tumor-specific T lymphocytes. This therapeutic association was evaluated in the immunocompetent C57BL6/KaLwRij with 5T33-OVA MM mouse model. Although orthotopic development of the disease is possible in this model, we chose to study subcutaneous MM grafts, a setting that facilitates the tumor growth evaluation and also the monitoring of transferred T cells, especially lymphocytes inside the tumor. Injection of OT-I CD8<sup>+</sup> T cells was performed 24 hours after  $\alpha$ -RIT to benefit from the early

effects of ionizing radiation on the tumor (e.g inflammatory context, release of cytokines and/or DAMPs. . .) without any damage to the transferred T cells because bismuth half-life is very short. The high-linear energy transfer (LET) characteristics of  $\alpha$ -particles (50 to 230 kEV/ $\mu$ m) allows very localized irradiation and efficient tumor cell toxicity [39]. However the short path length (50 to 100 $\mu$ m) of these particles makes them more suitable for disseminated or tiny clusters of tumor cells [40]. Therefore it is important to notice that in this study, the therapeutic interventions were conducted 10 and/or 11 days after MM engraftment at a time where tumor were already established in the majority of the animals (mean volume = 17,67  $\pm$  5,26 mm<sup>3</sup>). Despite this sub-optimal setting,  $\alpha$ -RIT alone or in combination with ACT was significantly efficient to delay tumor growth.

The results show that OT-I CD8<sup>+</sup> T cells persist over time, that they have the capabilities to migrate within the tumor and that their tropism for the tumor is dose-dependent (Fig 4B). Persistence of effector T cells *in vivo* is an essential parameter in cancer treatment because it can lead to enhanced antitumor efficacy *in vivo* [41,42]. Therefore to better understand the implication of the OT-I CD8<sup>+</sup> T cells in the anti-tumor response, we analyzed their persistence in different tissues of the animals at the end point. Interestingly and even though the combined treatment provides the best therapeutic efficacy, we observed less OT-I CD8<sup>+</sup> T cells in the spleen, lymph nodes, tumors and peripheral blood of mice treated with  $\alpha$ -RIT combined with ACT than in the one that received ACT alone. Several hypotheses might explain such result. First, for each mouse this study was performed at the end point, and the mice receiving with the combined treatment were sacrificed later than the others. During these few additional days of survival, OT-I CD8<sup>+</sup> T cells could have died progressively resulting in a lower amount at the time of analysis. On the other hand, because of the  $\alpha$ -RIT and the inflammatory and/or immunological (e.g. Figure B in S1 File and the slight increase of H<sub>2</sub>K<sup>b</sup>/OVA<sub>257–264</sub> complex expression we observed on 5T33-OVA cells after irradiation) context induced around the tumor, the activated OT-I CD8<sup>+</sup> T cells might exert their anti-tumor activity in a larger extent and more efficiently than after ACT alone. As a result the OT-I CD8<sup>+</sup> T cells could be more sensitive to activation induced cell death (AICD) [43]. Finally, this data could also reflect the exhaustion of OT-I CD8<sup>+</sup> T cell effector functions induced by the tumor immunosuppressive environment (e.g. expression of PDL-1, Fas-L, immunosuppressive cytokines, Treg cells). In mice treated with ACT alone, OT-I CD8<sup>+</sup> T cells would then migrate and accumulate in the different tissues without destroying the tumor cells.

OT-I CD8<sup>+</sup> T cells have been stimulated the same way *in vitro* for both ACT alone or ACT combined with RIT. Only the therapeutic combination resulted in a better tumor growth control. These results support the hypothesis that  $\alpha$ -RIT can induce an inflammatory context in the tumor and its microenvironment [32] that favor infiltration and function of the injected OT-I CD8<sup>+</sup> T cells.

This inflammatory context could potentiate the transition of activated T cells to optimal induction of effector T cells and thus facilitate tumor growth control shortly after  $\alpha$ -RIT. Such hypothesis has already been proposed in a mastocytoma tumor model [44]. In addition, a transient hematologic toxicity is observed a few days after  $\alpha$ -RIT (nadir = between 6 and 15 days after  $\alpha$ -RIT) as a result of bismuth irradiation on blood cells and bone marrow [31]. This peripheral blood cell depletion, especially the lymphodepletion could therefore promote OT-I T cell expansion and activation. Finally, it is also possible that radiation-induced remodeling of the abnormal tumor vessels results in efficient tumor infiltration by adoptive T cells and a better control of tumor proliferation [45].

In summary, the current study explored the feasibility, safety and efficacy of combining ACT after  $\alpha$ -RIT, demonstrating a significant better tumor growth control and improved survival compared to  $\alpha$ -RIT or ACT alone. Moreover this combination showed no adverse effects,

especially no additional toxicity as demonstrated by the absence of early mortality in mice receiving ACT after  $\alpha$ -RIT.

## Supporting Information

**S1 File. Expression of MHC class I and H<sub>2</sub>K<sup>b</sup>/OVA<sub>257–264</sub> complexes on 5T33-OVA cells after irradiation with  $\alpha$ -particles.** The <sup>213</sup>Bi labeled 9E7.4 mAb was added to 5T33-OVA cells in culture medium at a final activity of 44.4, 103.6 or 266.4 kBq/mL for *in vitro* studies. Then cells were harvested at 24, 48 and 72 hours after irradiation. Cells were stained by biotin-conjugated mAb against H<sub>2</sub>K<sup>b</sup>/H<sub>2</sub>D<sup>b</sup> (BD Biosciences, Le Pont de Claix, France) and revealed with streptavidin-PE (BD Biosciences, Le Pont de Claix, France) or by Fluorochrome-conjugated mAb directed against H<sub>2</sub>K<sup>b</sup>/OVA<sub>257–264</sub> complexes (eBioscience Paris, France). After staining, cells were fixed in paraformaldehyde 1%. Cell surface staining was done using standard procedure in the presence of 0.1% BSA. Adequate isotypic controls were used in parallel. Stained samples were analyzed on FACS Calibur flow cytometer using Cell Quest Pro software (BD Biosciences). Analysis of RFI for (**Figure A in S1 File**) mouse MHC-I (H<sub>2</sub>K<sup>b</sup>-H<sub>2</sub>D<sup>b</sup>) and (**Figure B in S1 File**) MHC-OVA complex (H<sub>2</sub>K<sup>b</sup>/OVA<sub>257–264</sub>). RFI is calculated as mean of fluorescence intensity of the specific antibody divided by that of negative cells. (TIF)

## Acknowledgments

We would like to thank Marie-Hélène Gaugler for critical review of the manuscript. We would also like to thank Sandrine Minault and Sylvia Lambot (CRCNA) for their technical help, as well as the UTE, Cytocell and Radioactivity facilities (SFR François Bonamy, IRS-UN, University of Nantes).

## Author Contributions

Conceived and designed the experiments: JM JBG JG YG. Performed the experiments: JM JBG CM LD SG CL MC FD JG YG. Analyzed the data: JM JBG JG YG. Contributed reagents/materials/analysis tools: JM JBG CM LD SG CL AFC AM FB JG YG. Wrote the paper: JM JBG JG YG.

## References

1. Delaney G, Jacob S, Featherstone C, Barton M (2005) The role of radiotherapy in cancer treatment: estimating optimal utilization from a review of evidence-based clinical guidelines. *Cancer* 104: 1129–1137. doi: [10.1002/cncr.21324](https://doi.org/10.1002/cncr.21324) PMID: [16080176](https://pubmed.ncbi.nlm.nih.gov/16080176/)
2. Begg AC, Stewart FA, Vens C (2011) Strategies to improve radiotherapy with targeted drugs. *Nat Rev Cancer* 11: 239–253. doi: [10.1038/nrc3007](https://doi.org/10.1038/nrc3007) PMID: [21430696](https://pubmed.ncbi.nlm.nih.gov/21430696/)
3. Bernier J, Hall EJ, Giaccia A (2004) Timeline: Radiation oncology: a century of achievements. *Nat Rev Cancer* 4: 737–747. doi: [10.1038/nrc1451](https://doi.org/10.1038/nrc1451) PMID: [15343280](https://pubmed.ncbi.nlm.nih.gov/15343280/)
4. Mothersill C, Seymour CB (2004) Radiation-induced bystander effects—implications for cancer. *Nat Rev Cancer* 4: 158–164. doi: [10.1038/nrc1277](https://doi.org/10.1038/nrc1277) PMID: [14964312](https://pubmed.ncbi.nlm.nih.gov/14964312/)
5. Prise KM, O'Sullivan JM (2009) Radiation-induced bystander signalling in cancer therapy. *Nat Rev Cancer* 9: 351–360. doi: [10.1038/nrc2603](https://doi.org/10.1038/nrc2603) PMID: [19377507](https://pubmed.ncbi.nlm.nih.gov/19377507/)
6. Kroemer G, Zitvogel L (2012) Abscopal but desirable: The contribution of immune responses to the efficacy of radiotherapy. *Oncoimmunology* 1: 407–408. PMID: [22754758](https://pubmed.ncbi.nlm.nih.gov/22754758/)
7. Garnett CT, Palena C, Chakraborty M, Chakraborty M, Tsang K-Y, Hodge JW (2004) Sublethal irradiation of human tumor cells modulates phenotype resulting in enhanced killing by cytotoxic T lymphocytes. *Cancer Res* 64: 7985–7994. doi: [10.1158/0008-5472.CAN-04-1525](https://doi.org/10.1158/0008-5472.CAN-04-1525) PMID: [15520206](https://pubmed.ncbi.nlm.nih.gov/15520206/)

8. Reits EA, Hodge JW, Herberts CA, Groothuis TA, Chakraborty M, Wansley EK et al. (2006) Radiation modulates the peptide repertoire, enhances MHC class I expression, and induces successful antitumor immunotherapy. *J Exp Med* 203: 1259–1271. doi: [10.1084/jem.20052494](https://doi.org/10.1084/jem.20052494) PMID: [16636135](https://pubmed.ncbi.nlm.nih.gov/16636135/)
9. Newcomb EW, Demaria S, Lukyanov Y, Shao Y, Schnee T, Kawashima N et al. (2006) The combination of ionizing radiation and peripheral vaccination produces long-term survival of mice bearing established invasive GL261 gliomas. *Clin Cancer Res* 12: 4730–4737. doi: [10.1158/1078-0432.CCR-06-0593](https://doi.org/10.1158/1078-0432.CCR-06-0593) PMID: [16899624](https://pubmed.ncbi.nlm.nih.gov/16899624/)
10. Chakraborty M, Abrams SI, Camphausen K, Liu K, Scott T, Norman Coleman C et al. (2003) Irradiation of tumor cells up-regulates Fas and enhances CTL lytic activity and CTL adoptive immunotherapy. *J Immunol* 170: 6338–6347. PMID: [12794167](https://pubmed.ncbi.nlm.nih.gov/12794167/)
11. Apetoh L, Ghiringhelli F, Tesniere A, Obeid M, Ortiz C, Criollo A et al. (2007) Toll-like receptor 4—dependent contribution of the immune system to anticancer chemotherapy and radiotherapy. *Nat Med* 13: 1050–1059. doi: [10.1038/nm1622](https://doi.org/10.1038/nm1622) PMID: [17704786](https://pubmed.ncbi.nlm.nih.gov/17704786/)
12. Kroemer G, Galluzzi L, Kepp O, Zitvogel L (2013) Immunogenic cell death in cancer therapy. *Annu Rev Immunol* 31: 51–72. doi: [10.1146/annurev-immunol-032712-100008](https://doi.org/10.1146/annurev-immunol-032712-100008) PMID: [23157435](https://pubmed.ncbi.nlm.nih.gov/23157435/)
13. Chakravarty PK, Alfieri A, Thomas EK, Beri V, Tanaka KE, Vikram B et al. (1999) Flt3-ligand administration after radiation therapy prolongs survival in a murine model of metastatic lung cancer. *Cancer Res* 59: 6028–6032. PMID: [10626784](https://pubmed.ncbi.nlm.nih.gov/10626784/)
14. Demaria S, Ng B, Devitt ML, Babb JS, Kawashima N, Liebes L et al. (2004) Ionizing radiation inhibition of distant untreated tumors (abscopal effect) is immune mediated. *Int J Radiat Oncol Biol Phys* 58: 862–870. doi: [10.1016/j.ijrobp.2003.09.012](https://doi.org/10.1016/j.ijrobp.2003.09.012) PMID: [14967443](https://pubmed.ncbi.nlm.nih.gov/14967443/)
15. Demaria S, Formenti SC (2012) Role of T lymphocytes in tumor response to radiotherapy. *Front Oncol* 2: 95. doi: [10.3389/fonc.2012.00095](https://doi.org/10.3389/fonc.2012.00095) PMID: [22937524](https://pubmed.ncbi.nlm.nih.gov/22937524/)
16. Alatrash G, Jakher H, Stafford PD, Mittendorf EA (2013) Cancer immunotherapies, their safety and toxicity. *Expert Opin Drug Saf* 12: 631–645. doi: [10.1517/14740338.2013.795944](https://doi.org/10.1517/14740338.2013.795944) PMID: [23668362](https://pubmed.ncbi.nlm.nih.gov/23668362/)
17. Stroncek DF, Melief CJ, Castiello L, Cesano A, Cheever MA, Civini S et al. (2013) Highlights of the society for immunotherapy of cancer (SITC) 27th annual meeting. *Journal for ImmunoTherapy of Cancer* 1: 4.
18. Rosenberg SA, Yang JC, Sherry RM, Kammula US, Hughes MS, Phan GQ et al. (2011) Durable complete responses in heavily pretreated patients with metastatic melanoma using T-cell transfer immunotherapy. *Clin Cancer Res* 17: 4550–4557. doi: [10.1158/1078-0432.CCR-11-0116](https://doi.org/10.1158/1078-0432.CCR-11-0116) PMID: [21498393](https://pubmed.ncbi.nlm.nih.gov/21498393/)
19. Formenti SC, Demaria S (2013) Combining Radiotherapy and Cancer Immunotherapy: A Paradigm Shift. *J Natl Cancer Inst*. doi: [10.1093/jnci/djs629](https://doi.org/10.1093/jnci/djs629)
20. Cameron RB, Spiess PJ, Rosenberg SA (1990) Synergistic antitumor activity of tumor-infiltrating lymphocytes, interleukin 2, and local tumor irradiation. Studies on the mechanism of action. *J Exp Med* 171: 249–263. PMID: [2295878](https://pubmed.ncbi.nlm.nih.gov/2295878/)
21. Rosenberg SA, Restifo NP, Yang JC, Morgan RA, Dudley ME (2008) Adoptive cell transfer: a clinical path to effective cancer immunotherapy. *Nat Rev Cancer* 8: 299–308. doi: [10.1038/nrc2355](https://doi.org/10.1038/nrc2355) PMID: [18354418](https://pubmed.ncbi.nlm.nih.gov/18354418/)
22. Vacchelli E, Vitale I, Tartour E, Eggermont A, Sautès-Fridman C, Galon J et al. (2013) Trial Watch: Anti-cancer radioimmunotherapy. *Oncoimmunology* 2: e25595. doi: [10.4161/onci.25595](https://doi.org/10.4161/onci.25595) PMID: [24319634](https://pubmed.ncbi.nlm.nih.gov/24319634/)
23. Supiot S, Thillays F, Rio E, Mahé MA, Barbet FJ, Kraeber-Bodéré F et al. (2007) [Alpha-radioimmunotherapy: a review of recent developments]. *Cancer Radiother* 11: 252–259. doi: [10.1016/j.canrad.2007.05.001](https://doi.org/10.1016/j.canrad.2007.05.001) PMID: [17604673](https://pubmed.ncbi.nlm.nih.gov/17604673/)
24. Supiot S, Gouard S, Charrier J, Apostolidis C, Chatal J-F, Barbet J et al. (2005) Mechanisms of cell sensitization to alpha radioimmunotherapy by doxorubicin or paclitaxel in multiple myeloma cell lines. *Clin Cancer Res* 11: 7047s–7052s. doi: [10.1158/1078-0432.CCR-1004-0021](https://doi.org/10.1158/1078-0432.CCR-1004-0021) PMID: [16203801](https://pubmed.ncbi.nlm.nih.gov/16203801/)
25. Tomblyn MB, Katin MJ, Wallner PE (2013) The new golden era for radioimmunotherapy: not just for lymphomas anymore. *Cancer Control* 20: 60–71. PMID: [23302908](https://pubmed.ncbi.nlm.nih.gov/23302908/)
26. Kitson SL, Cuccurullo V, Moody TS, Mansi L (2013) Radionuclide antibody-conjugates, a targeted therapy towards cancer. *Curr Radiopharm* 6: 57–71. PMID: [23808764](https://pubmed.ncbi.nlm.nih.gov/23808764/)
27. Tomblyn M (2012) Radioimmunotherapy for B-cell non-hodgkin lymphomas. *Cancer Control* 19: 196–203. PMID: [22710895](https://pubmed.ncbi.nlm.nih.gov/22710895/)
28. Wulbrand C, Seidl C, Gaertner FC, Bruchertseifer F, Morgenstern A, Essler M et al. (2013) Alpha-particle emitting <sup>213</sup>Bi-anti-EGFR immunoconjugates eradicate tumor cells independent of oxygenation. *PLoS ONE* 8: e64730. doi: [10.1371/journal.pone.0064730](https://doi.org/10.1371/journal.pone.0064730) PMID: [23724085](https://pubmed.ncbi.nlm.nih.gov/23724085/)
29. Navarro-Teulon I, Lozza C, Pèlerin A, Vivès E, Pouget J-P (2013) General overview of radioimmunotherapy of solid tumors. *Immunotherapy* 5: 467–487. doi: [10.2217/imt.13.34](https://doi.org/10.2217/imt.13.34) PMID: [23638743](https://pubmed.ncbi.nlm.nih.gov/23638743/)

30. Baidoo KE, Yong K, Brechbiel MW (2013) Molecular pathways: targeted  $\alpha$ -particle radiation therapy. *Clin Cancer Res* 19: 530–537. doi: [10.1158/1078-0432.CCR-12-0298](https://doi.org/10.1158/1078-0432.CCR-12-0298) PMID: [23230321](https://pubmed.ncbi.nlm.nih.gov/23230321/)
31. Chérel M, Gouard S, Gaschet J, Saï-Maurel C, Bruchertseifer F, Morgenstern A et al. (2013) 213Bi Radioimmunotherapy with an Anti-mCD138 Monoclonal Antibody in a Murine Model of Multiple Myeloma. *J Nucl Med* 54: 1597–1604. doi: [10.2967/jnumed.112.111997](https://doi.org/10.2967/jnumed.112.111997) PMID: [24003167](https://pubmed.ncbi.nlm.nih.gov/24003167/)
32. Gorin J-B, Menager J, Gouard S, Maurel C, Guilloux Y, Faivre-Chauvet A et al. (2014) Antitumor Immunity Induced after  $\alpha$  Irradiation. *Neoplasia* 16: 319–328. doi: [10.1016/j.neo.2014.04.002](https://doi.org/10.1016/j.neo.2014.04.002) PMID: [24862758](https://pubmed.ncbi.nlm.nih.gov/24862758/)
33. Keisari Y, Hochman I, Confino H, Korenstein R, Kelson I (2014) Activation of local and systemic anti-tumor immune responses by ablation of solid tumors with intratumoral electrochemical or alpha radiation treatments—Springer. *Cancer Immunol Immunother* 63: 1–9. doi: [10.1007/s00262-013-1462-2](https://doi.org/10.1007/s00262-013-1462-2) PMID: [23955682](https://pubmed.ncbi.nlm.nih.gov/23955682/)
34. Radl J, Croese JW, Zurcher C, Van den Eenden-Vieveen MH, de Leeuw AM (1988) Animal model of human disease. Multiple myeloma. *The American Journal of Pathology* 132: 593. PMID: [3414786](https://pubmed.ncbi.nlm.nih.gov/3414786/)
35. Garrett IR, Dallas S, Radl J, Mundy GR (1997) A murine model of human myeloma bone disease. *Bone* 20: 515–520. PMID: [9177864](https://pubmed.ncbi.nlm.nih.gov/9177864/)
36. Onishi M, Kinoshita S, Morikawa Y, Shibuya A, Phillips J, Lanier LL et al. (1996) Applications of retrovirus-mediated expression cloning. *Exp Hematol* 24: 324–329. PMID: [8641361](https://pubmed.ncbi.nlm.nih.gov/8641361/)
37. Walter RB, Press OW, Pagel JM (2010) Pretargeted radioimmunotherapy for hematologic and other malignancies. *Cancer Biother Radiopharm* 25: 125–142. doi: [10.1089/cbr.2010.0759](https://doi.org/10.1089/cbr.2010.0759) PMID: [20423225](https://pubmed.ncbi.nlm.nih.gov/20423225/)
38. Burnette BC, Liang H, Lee Y, Chlewicki L, Khodarev NN, Weichselbaum RR et al. (2011) The efficacy of radiotherapy relies upon induction of type I interferon-dependent innate and adaptive immunity. *Cancer Res* 71: 2488–2496. doi: [10.1158/0008-5472.CAN-10-2820](https://doi.org/10.1158/0008-5472.CAN-10-2820) PMID: [21300764](https://pubmed.ncbi.nlm.nih.gov/21300764/)
39. Chérel M, Davodeau F, Kraeber-Bodéré F, Chatal JF (2006) Current status and perspectives in alpha radioimmunotherapy. *Q J Nucl Med Mol Imaging* 50: 322–329. PMID: [17043629](https://pubmed.ncbi.nlm.nih.gov/17043629/)
40. Mulford DA, Scheinberg DA, Jurcic JG (2005) The promise of targeted  $\{\alpha\}$ -particle therapy. *J Nucl Med* 46 Suppl 1: 199S–204S. PMID: [15653670](https://pubmed.ncbi.nlm.nih.gov/15653670/)
41. Singh H, Serrano LM, Pfeiffer T, Olivares S, McNamara G, Smith DD et al. (2007) Combining adoptive cellular and immunocytokine therapies to improve treatment of B-lineage malignancy. *Cancer Res* 67: 2872–2880. doi: [10.1158/0008-5472.CAN-06-2283](https://doi.org/10.1158/0008-5472.CAN-06-2283) PMID: [17363611](https://pubmed.ncbi.nlm.nih.gov/17363611/)
42. Kowolik CM, Topp MS, Gonzalez S, Pfeiffer T, Olivares S, Gonzalez N et al. (2006) CD28 costimulation provided through a CD19-specific chimeric antigen receptor enhances in vivo persistence and antitumor efficacy of adoptively transferred T cells. *Cancer Res* 66: 10995–11004. doi: [10.1158/0008-5472.CAN-06-0160](https://doi.org/10.1158/0008-5472.CAN-06-0160) PMID: [17108138](https://pubmed.ncbi.nlm.nih.gov/17108138/)
43. Brenner D, Krammer PH, Arnold R (2008) Concepts of activated T cell death. *Crit Rev Oncol Hematol* 66: 52–64. doi: [10.1016/j.critrevonc.2008.01.002](https://doi.org/10.1016/j.critrevonc.2008.01.002) PMID: [18289867](https://pubmed.ncbi.nlm.nih.gov/18289867/)
44. Guilloux Y, Bai XF, Liu X, Zheng P, Liu Y (2001) Optimal induction of effector but not memory antitumor cytotoxic T lymphocytes involves direct antigen presentation by the tumor cells. *Cancer Res* 61: 1107–1112. PMID: [11221840](https://pubmed.ncbi.nlm.nih.gov/11221840/)
45. Ganss R, Ryschich E, Klar E, Arnold B, Hämmerling GJ (2002) Combination of T-cell therapy and trigger of inflammation induces remodeling of the vasculature and tumor eradication. *Cancer Res* 62: 1462–1470. PMID: [11888921](https://pubmed.ncbi.nlm.nih.gov/11888921/)