

Artificial light at night correlates with seabird groundings: mapping city lights near a seabird breeding hotspot

Ariel-Micaiah Heswall¹, Lynn Miller², Ellery J. McNaughton¹, Amy L. Brunton-Martin¹, Kristal E. Cain¹, Megan R. Friesen³ and Anne C. Gaskett¹

¹ School of Biological Sciences, University of Auckland, Auckland, New Zealand

² BirdCare Aotearoa, Auckland, New Zealand

³ Department of Biology, Saint Martin's University, Lacey, WA, United States

ABSTRACT

Artificial light at night (ALAN) is a growing conservation concern for seabirds, which can become disoriented and grounded by lights from buildings, bridges and boats. Many fledgling seabirds, especially Procellariiformes such as petrels and shearwaters, are susceptible to light pollution. The Hauraki Gulf, a seabird hotspot located near Tāmaki Makaurau/Auckland, Aotearoa—New Zealand's largest urban city, with a considerable amount of light pollution and regularly documented events of seabird groundings. We aim to identify the characteristics of locations especially prone to seabird groundings. We used an online database of seabirds taken to a wildlife rescue facility by the public to map 3 years of seabird groundings and test for correlations between seabird groundings and the natural night sky brightness. We found that areas with lower amounts of natural night sky brightness and greater light pollution often had a higher number of seabirds grounded. Further, we identified important seasonal patterns and species differences in groundings. Such differences may be a by-product of species ecology, visual ecology and breeding locations, all of which may influence attraction to lights. In general, seabird groundings correlate with the brightness of the area and are species-specific. Groundings may not be indicative of human or seabird population abundance considering some areas have a lower human population with high light levels and had high amounts of seabird groundings. These findings can be applied worldwide to mitigate groundings by searching and targeting specific brightly lit anthropogenic structures. Those targeted structures and areas can then be the focus of light mitigation efforts to reduce seabird groundings. Finally, this study illustrates how a combination of community science, and a concern for seabirds grounded from light attraction, in addition to detailed animal welfare data and natural night sky brightness data can be a powerful, collaborative tool to aid global conservation efforts for highly-at-risk animals such as seabirds.

Submitted 14 July 2022

Accepted 23 September 2022

Published 18 October 2022

Corresponding author

Ariel-Micaiah Heswall,
ahes107@aucklanduni.ac.nz

Academic editor

Eric Ward

Additional Information and
Declarations can be found on
page 17

DOI 10.7717/peerj.14237

© Copyright

2022 Heswall et al.

Distributed under

Creative Commons CC-BY 4.0

OPEN ACCESS

Subjects Animal Behavior, Conservation Biology, Ecology, Marine Biology, Zoology

Keywords ALAN, Seabirds, Light pollution, Light attraction, Groundings, Conservation

INTRODUCTION

As urbanisation expands into rural landscapes (Nechyba & Walsh, 2004) it can denaturalise the environment and encroach into the habitat of many animals (Sharma, Ram & Rajpurohit, 2011; Yeo & Neo, 2010). One aspect of urbanisation that can change animal behaviour is artificial lighting at night (ALAN) or light pollution. Light pollution can be from, but not exclusive to, street lighting, vehicles, security lights and buildings (Gaston & Bennie, 2014) and is associated with changes to animals and plants (Da Silva, Valcu & Kempenaers, 2015; Duarte et al., 2019). Light pollution affects the behaviours and movements of young offspring such as hatchling logger head turtles, *Caretta caretta*, in which the effect of light impairs their ability to move seaward (Lorne & Salmon, 2007). Some animals avoid lit areas (Bliss-Ketchum et al., 2016), but many studies document attraction to light pollution (Eisenbeis et al., 2009; van Langevelde et al., 2017). Songbirds on annual migration routes are frequently documented as attracted to the lights, which leads to collisions with buildings (Hudecki & Finegan, 2018) and cruise ships (Bocetti, 2011).

Another group of birds that are likely to be affected by light pollution are seabirds. Research documents the effect of light pollution which can coincide with high rates of seabird groundings: seabirds can be grounded by lights and collide with anthropogenic structures, potentially as a result of disorientation and attraction causing death (Rodríguez, Dann & Chiaradia, 2017; Troy et al., 2013). ALAN-related deck strike is also a common occurrence on fishing vessels and cruise ships (Bocetti, 2011; Glass & Ryan, 2013; Holmes, 2017; Merkel & Johansen, 2011; Ryan, Ryan & Glass, 2021).

The effects of light pollution on seabirds can include collisions *i.e.*, with a fishing vessel or with an anthropogenic structure, groundings (when a seabird lands on the ground and is unable to take off), starvation, dehydration, and predation events which can lead to various injuries (Le Corre et al., 2002; Rodríguez et al., 2017a). Inexperienced seabird fledglings are the age group primarily grounded by light pollution, and groundings are especially common among burrow-nesting Procellariiformes (Rodríguez et al., 2017b). Procellariiformes can have acute vision and olfaction (Hayes, Martin & Brooke, 1991; Martin & Crawford, 2015; Nevitt, 2000). However, fledglings of burrow-nesting seabird species have underdeveloped vision, likely due to their lack of exposure to visual information while underground, making them more likely to be prone to disorientation from lights (Atchoi, Mitkus & Rodríguez, 2020; Mitkus, Nevitt & Kelber, 2018). Due to most Procellariiformes' having acute vision and olfaction this generates sensitivity to sensory information which can result in them being uniquely vulnerable to sensory threats, including ALAN (Friesen, Beggs & Gaskett, 2017; Heswall et al., 2021).

ALAN-related groundings occur internationally with records in Hawaii (Rodríguez et al., 2015; Telfer et al., 1987), the Canary Islands (Rodríguez & Rodríguez, 2009), Maltese Islands (Laguna, Barbara & Metzger, 2014), Canada (Wilhelm et al., 2021) the United Kingdom (Syposz et al., 2018) and New Zealand (Whitehead et al., 2019). For example, over 1,500 Barau's petrel (*Pterodroma barau*), and over 650 Audubon's shearwater, (*Puffinus lherminieiri bailloni*), were grounded on Réunion Island between

1996 and 1999, mainly attracted to streetlights (Le Corre et al., 2002). In Aotearoa's/New Zealand's Hauraki Gulf, near the major city of Auckland, almost 70 Buller's shearwater (*Puffinus bulleri*) and flesh-footed shearwater (*Ardenna carneipes*) succumbed to deck strike from the lights of a single cruise ship near Te-Hauturu-O-Toi (Morton, 2018).

Collisions and groundings potentially due to light pollution are likely to be more frequent when abundant seabird breeding colonies (especially burrow-nesting Procellariiformes) are adjacent to large urban cities. Northern New Zealand is a seabird hotspot with over a quarter of the world's seabird species (Gaskin & Rayner, 2013). The Hauraki Gulf, near the north of Te Ika-a-Māui/the North Island, is a key breeding habitat of global importance with approximately 27 seabird species in a region covering 1.2 million hectares (Figs. S1A–S1C) (Auckland Council, 2012; Gaskin & Rayner, 2013; Whitehead et al., 2019). Within this area, there are many seabird colonies, both on land and on islands. Some species are relatively widespread with multiple colonies (e.g., Grey faced petrel, *Pterodroma gouldi*) whereas others are endemic and only breed on specific islands of the gulf. For example, the Buller's shearwater, only breeds on the Poor Knights Islands/Tawhiti Rahi, while the NZ storm petrel (*Fregetta maoriana*) only breeds on Te-Hauturu-O-Toi and the black petrel, (*Procellaria parkinsoni*), only breeds on Aotea and Te-Hauturu-O-Toi (Gaskin & Rayner, 2013). Burrow-nesting Procellariiformes are the most-common type of seabird in this region (Gaskin & Rayner, 2013).

In addition to hosting rare and diverse seabird species of burrow-nesting seabirds, known for their propensity of groundings due to ALAN, the Hauraki Gulf is also the location of NZ largest and rapidly growing city: Auckland/Tāmaki Makaurau. The associated light pollution from the city likely threatens marine and native ecosystems (McNaughton et al., 2022). Many of the seabirds which breed in the Hauraki Gulf often fly over Auckland to reach their foraging grounds in the Tasman Sea (e.g., Cook's petrels (*Pterodroma cookii*) (Gaskin & Rayner, 2013)). As they fly over, they may be at a high risk of disorientation and grounding due to ALAN. However, there has been little research on the characteristics of locations where seabirds around New Zealand and more specifically, in Auckland are most likely to become grounded. Considering the Hauraki Gulf is home to many endemic and vulnerable seabirds, it is important to determine whether there are grounding hotspots, and whether these correlate with the natural night sky brightness (an indicator of light pollution intensity).

Here, we characterise the location of seabird groundings, and test for correlations with natural night sky brightness. We do this by mapping grounding locations of seabird species that have been rescued and deposited at the local avian rehabilitation facility, BirdCare Aotearoa. We combine this with data on the natural night sky brightness to explore these aims:

Aim 1: To map and identify locations of seabird groundings in the Auckland region.

Aim 2: Test for relationships between seabird groundings and natural night sky brightness.

Aim 3: Explore any other relationships (e.g., seasonal differences, species differences and urban vs rural) with effect of ALAN.

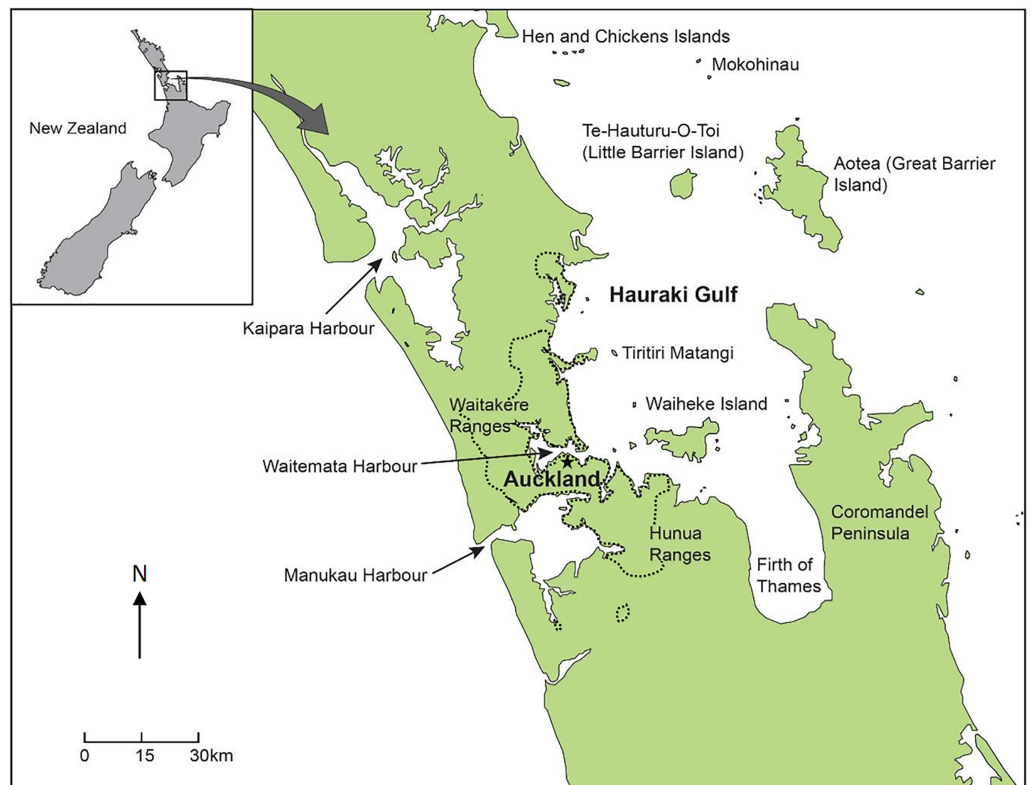


Figure 1 Map of the major cities and suburbs of Auckland with the black/dashed line indicating urban/rural boundary. Black star indicates CBD. [Full-size !\[\]\(5f471a71b78d7676bc356df190b88ab4_img.jpg\) DOI: 10.7717/peerj.14237/fig-1](https://doi.org/10.7717/peerj.14237/fig-1)

MATERIALS AND METHODS

Study site

Auckland is New Zealand's largest city with over 1.4 million residents (*Auckland Council, 2018*) sprawling over 560 km² (*Statistics New Zealand, 2013*). The Auckland region is an isthmus surrounded by the Hunua Mountain Ranges in the south-east, and the Waitakere Mountain Ranges to the north-west, bordered by the Tasman Sea to the west and the Hauraki Gulf to the east (*Fig. 1*). The Auckland region is surrounded by two major bodies of water, the Tasman Sea to the west and the Pacific Ocean to the east.

Study species

We included the seabird species brought to BirdCare Aotearoa which were found grounded across Auckland city: Cook's petrel, grey-faced petrel, black petrel, Buller's shearwater, fluttering shearwater (*Puffinus gavia*), common diving petrel (*Pelecanoides urinatrix*), white-faced storm petrel (*Pelagodroma marina*), sooty shearwater (*Ardenna grisea*) (*Table 1*). These are all burrow-nesting seabirds which have breeding sites around Auckland and the Hauraki Gulf (*Figs. S1A–S1C*) (*Miskelly, 2013*). These species were included in our analyses because they have also been recorded in the literature to have been susceptible to the effects of ALAN (*Gaskin & Rayner, 2013; Holmes, 2017; Whitehead et al., 2019; Zissis, 2020*). Seabirds species which were excluded included the Suliformes such as

Table 1 Seabird species brought into BirdCare Aotearoa from 2018–2021¹. Cases were included in our analyses when seabirds have been recorded in the literature to have susceptible to the effects of ALAN.

	Species name	Te Reo name	IUCN rank ²	NZ conservation status ²	Breeding population numbers ^{3,4,5,6,8}	Total patient number ¹	% released ¹	Time of year of grounded seabirds ¹	Fledgling months ^{7,8}
Cook's petrel	<i>Pterodroma cookii</i>	Titi	Vulnerable	Relict	>300,000 ⁹	247	73%	December–May	February–March ⁷
Grey-faced petrel	<i>Pterodroma gouldi</i>	ōi	Least Concern	Not threatened	~300,000 ³	41	46%	Throughout	December–January ⁸
Black petrel	<i>Procellaria parkinsoni</i>	Tāiko	Vulnerable	Nationally vulnerable	~5000 ⁴	38	58%	December–January; May–August	April–July ⁸
Fluttering shearwater	<i>Puffinus gavia</i>	Pakahā	Least concern	Relict	>100,000 ^{3,7}	18	22%	January–April	January–February ⁸
White-faced storm petrel	<i>Pelagodroma marina</i>	Takahikare-moana	Least concern	Relict	>1,000,000 ^{3,6}	7	29%	November–March	January–March ⁸
Buller's shearwater	<i>Puffinus bulleri</i>	Rako	Vulnerable	Naturally uncommon	~78,000 ⁵	48	81%	May	April–May ⁸
Common diving petrel	<i>Pelecanoides urinatrix</i>	Kuaka	Least concern	Relict	>1,000,000 ^{3,7}	6	33%	August; December–January	November–January ⁸
Sooty shearwater	<i>Ardenna grisea</i>	Hākoakoa	Near threatened	Declining	>20,000,000 ^{3,7}	14	36%	October–February February–June	April–May ⁸

Notes:¹ *The Wild Neighbors Database Project (2021)*.² *BirdLife International (2021)*.³ *Miskelly (2013)*.⁴ *Bell (2013)*.⁵ *Friesen et al. (2021)*.⁶ *Southey (2013)*.⁷ *Gaskin & Rayner (2013)*.⁸ *Taylor & Rayner (2013)*.⁹ *Rayner et al. (2007)*.

the Australasian gannet (*Morus serrator*), as well as the Charadriiformes such as the southern black-backed gulls (*Larus dominicanus*), and red-billed gulls (*Chroicocephalus novaehollandiae scopulinus*). As of yet, nothing has been recorded in the literature about those seabird orders and species being attracted to lights.

Data collection

Due to Auckland being a large city covering over 560 km² (*Statistics New Zealand, 2013*), we were not able to use the ideal systematic approach to find and collect dead or alive grounded seabirds. Therefore, for this study we used a citizen science approach using data from the wildlife rehabilitation medical database (WRMD; *The Wild Neighbors Database Project, 2021*). WRMD is a database designed for wildlife rehabilitators to record, analyse and manage the data of the animals which enter into their care/facility. Commencing in 2016, the database is now used in over 25 different countries and almost 1,000 rehabilitation centers (*The Wild Neighbors Database Project, 2021*). We extracted data on seabirds that had been found in the Auckland region (both urban and rural areas) and brought into BirdCare Aotearoa from January 2018 until September 2021.

GIS analysis

The physical address where the seabird was found was obtained using the WRMD (*The Wild Neighbors Database Project, 2021*). We then inputted the physical addresses into the search engine Nominatum to generate a GPS coordinate (longitude/latitude) which would be used in OpenStreetMap (OSM). OSM is an open source mapping system that relies on user data to create publicly available maps (*OpenStreetMap, 2021*).

This was conducted in R studio using ‘tmptools’ and the function ‘geocode_OSM()’ (*Tennekes, 2021*). If a coordinate was not found for an address, then it was filtered for matched addresses until all the coordinates for the addresses were found. Once all the addresses and coordinates matched, they were plotted out onto a map using the packages ‘rJava’ and ‘OpenStreetMap’ (*Fellows, 2019; Urbanek, 2009*).

Map projections

OSM uses the Universal Transverse Mercator (UTM), as its projection, dividing the earth into an even grid creating less distortion at the poles and preserving distance. To obtain the minimum amount of distortion for our location in Auckland, New Zealand, we defined our zone as ‘Zone 1’. Since our coordinates are in longitude/latitude and not UTM, our points were converted into a Spatial Points Data Frame (SPDF) for plotting onto the map using the packages ‘sp’, ‘raster’ (*Hijmans, 2021; Pebesma et al., 2012*) and ‘ggplot2’ (*Wickham, 2016*). Once converted, dot plots and probability heatmaps were constructed to identify the grounding locations in Auckland for each individual seabird species as well as changes over time.

Map construction

To construct the probability heat maps we used the kernel density estimate (stat_density_2d; ggplot2). This enabled us to find the probability that a future point might occur in that area, given the current distribution of points per 5 km².

We also mapped the predicted natural night sky brightness, using data obtained from continuous measurements between November 2015 to August 2017 of Auckland’s night sky brightness (*McNaughton et al., 2022*). The predicted natural night sky brightness is a measure of the night sky quality and is an index. The index used has values between 13–22 mag_{SQM}/arcsec² (*McNaughton et al., 2022*). The higher the value, the greater the natural night sky brightness meaning that there is a smaller intensity of light pollution (*McNaughton et al., 2022*). Conversely a lower value corresponds with a lower natural night sky brightness meaning that there is a greater intensity of light pollution (*McNaughton et al., 2022*).

Locations

To test for a relationship between the predicted natural night sky brightness and seabird groundings, the map of Auckland was divided into 30 raster grid squares in 10 km by 10 km using the package ‘raster’. The average, minimum and maximum predicted natural night sky brightness for each grid square was extracted. The seabird fallout coordinate points were imported into the raster and then extracted for each grid square. The 10 km by

10 km grid squares were used to avoid zero inflated data – smaller grid length generate many grid squares with 0 seabirds.

An urban/rural delineation was generated using the urban boundary data from [Auckland Council \(2012\)](#). We used the addresses where the grounded seabirds were found in order to categorise the grounding into either a rural or urban area using the delineation. These categories were used in statistical analysis to look for relationships between seabird fallout and urban/rural areas.

STATISTICAL ANALYSES

Seabird groundings, location and dates

To test whether the number of seabird groundings depended on natural sky brightness, we calculated the maximum brightness in a 10 km by 10 km grid. We fit one generalised linear models (poisson distribution) using the R package, 'glmmTMB', with number of groundings as the response variable and maximum brightness as the predictor ([Brooks et al., 2017](#)). We checked assumptions of the model using the R package, 'DHARMA' – as the data were zero-inflated, we included a formula for zero-inflation in the model. Goodness of fit was measured using McFadden's pseudo- R^2 ([Hartig, 2022](#)).

To investigate how location whether urban or rural (also proxy for human population) and date influenced the probability of each of the nine species being grounding, we performed a set of multinomial logistic regressions using the R package 'nnet' ([Venables & Ripley, 2002](#)). These models predict the probability that a seabird species is being grounded according to the corresponding location or season. Predictions are made in turn for each variable location, while all other variables are considered fixed. Goodness of fit for the model was assessed using McFadden's pseudo- R^2 . Models were fit using three types of data:

1. The date of the grounding (numeric; [Folland & Karl, 2001](#))
2. The type of location of the grounding (binary: urban vs rural; [Folland & Karl, 2001](#)),
3. The austral (Southern Hemisphere) season (factorial: winter, spring, summer, autumn).

Model selection was performed using Akaike's Information Criterion (AIC), where we chose the model with the lowest AIC, and effects estimated using type-III analysis-of-variance ('car' package) ([Fox & Weisberg, 2018](#)). In several instances, perfect separation occurred as seabirds were only ever recorded as grounded in Autumn 2018. In these cases, season was excluded and our final model predicted the probability of a species grounding from date and location. We calculated predicted probabilities for pairwise contrasts using the package 'lsmeans' ([Lenth, 2016](#)) in R.

RESULTS

A total of 356 seabirds from eight different seabird species were brought into BirdCare Aotearoa from January 2018–December 2021 which were found grounded ([Table 1](#)). The central business district (CBD) was a grounding hotspot ([Fig. 2](#)), with fewer

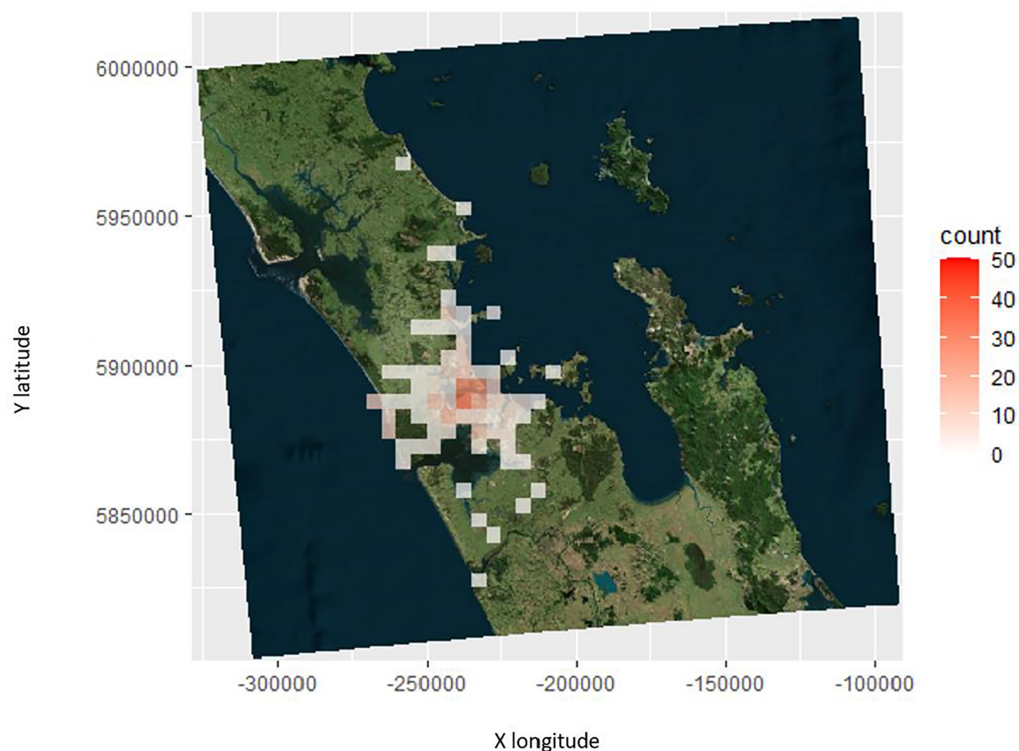


Figure 2 The number and location of the seabird groundings across Auckland in 5 km² for all species from 2018–2021. [Full-size !\[\]\(5fd6ef84f97f42d7f8b34275f1b65312_img.jpg\) DOI: 10.7717/peerj.14237/fig-2](https://doi.org/10.7717/peerj.14237/fig-2)

groundings reported in the rural areas with the exception of seabird groundings in brightly lit rural areas (Fig. 2).

Associations with natural night sky brightness

The lowest natural night sky brightness in 2016 occurs in the CBD area as well as around the industrial areas and north and west Auckland (Fig. 3A). There is a negative correlation between seabird groundings and maximum natural night sky brightness, such that there is more fallout in areas with more light pollution (lower values of maximum natural night sky brightness) (Fig. 4; Table 2) (note that, as previously mentioned, high values of natural night sky brightness actually means a lower intensity of light pollution). The majority of the seabird groundings occurs in areas with a lower value of max night sky brightness (Fig. 3B; Fig. 4; Table 2).

Urban vs rural

Most seabird species were grounded similarly across both urban and rural areas (Table S1; $P > 0.05$). However there were some species such as the black petrel and grey-faced petrels which tended to be grounded in the rural areas more often compared to the urban area (Table S1; Fig. 5), whereas the Cook's petrel had a greater chance of becoming grounded in the urban area (Table S1; Fig. 5).

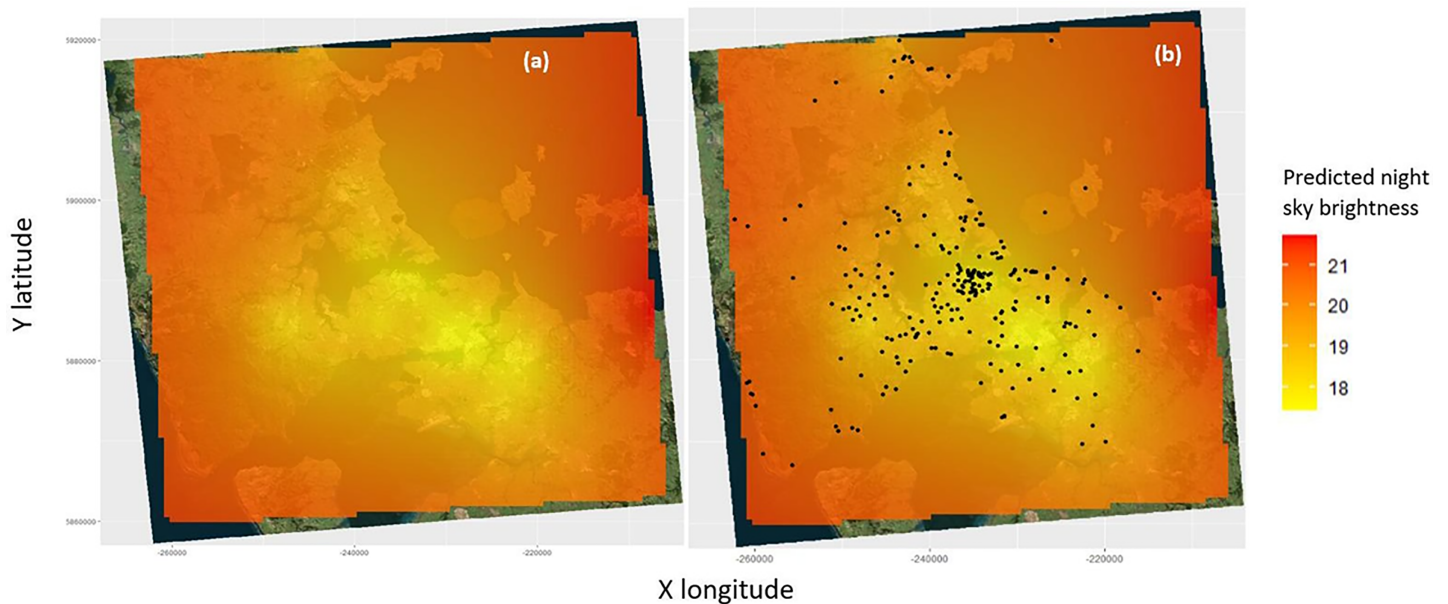


Figure 3 Heat map of the light pollution data in Auckland in 2016 (McNaughton et al., 2022). (A) Overlaid with the locations of the seabird fallout of all species from 2018–2021. (B) Predictions indicate the predicted night sky brightness or night sky quality, the higher the number the greater the night sky quality (magSQM/arcsec⁻²). [Full-size](#) DOI: 10.7717/peerj.14237/fig-3

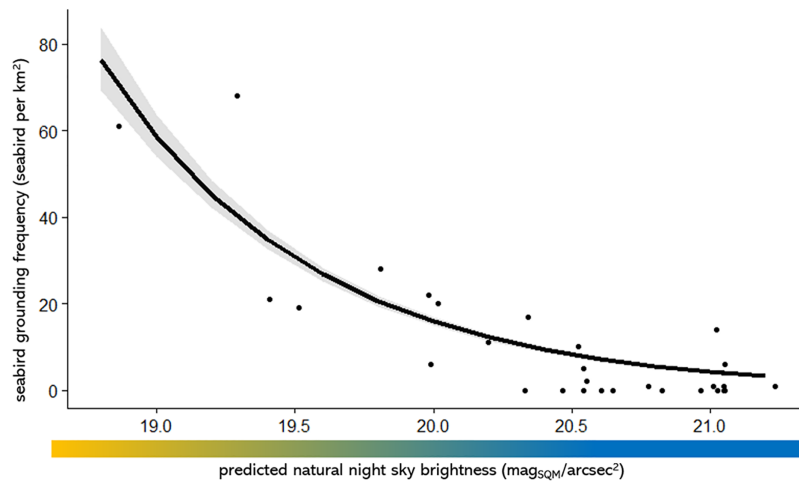


Figure 4 The seabird fallout frequency in 10 km by 10 km grid squares against the mean predicted night sky brightness. Note that high values of night sky brightness actually mean a darker sky with less Artificial Light at Night (ALAN). [Full-size](#) DOI: 10.7717/peerj.14237/fig-4

Table 2 Results from three linear models examining the relationship between seabird fallout and the mean, max and min predicted night sky brightness for every 10 km by 10 km.

Night sky brightness	Estimate	Standard error	T value	P value
mean	-15.769	3.711	-4.250	0.0001×10^{-6}
max	-21.960	3.725	-5.895	0.0001×10^{-6}
min	-11.038	3.572	-3.090	0.0001×10^{-6}

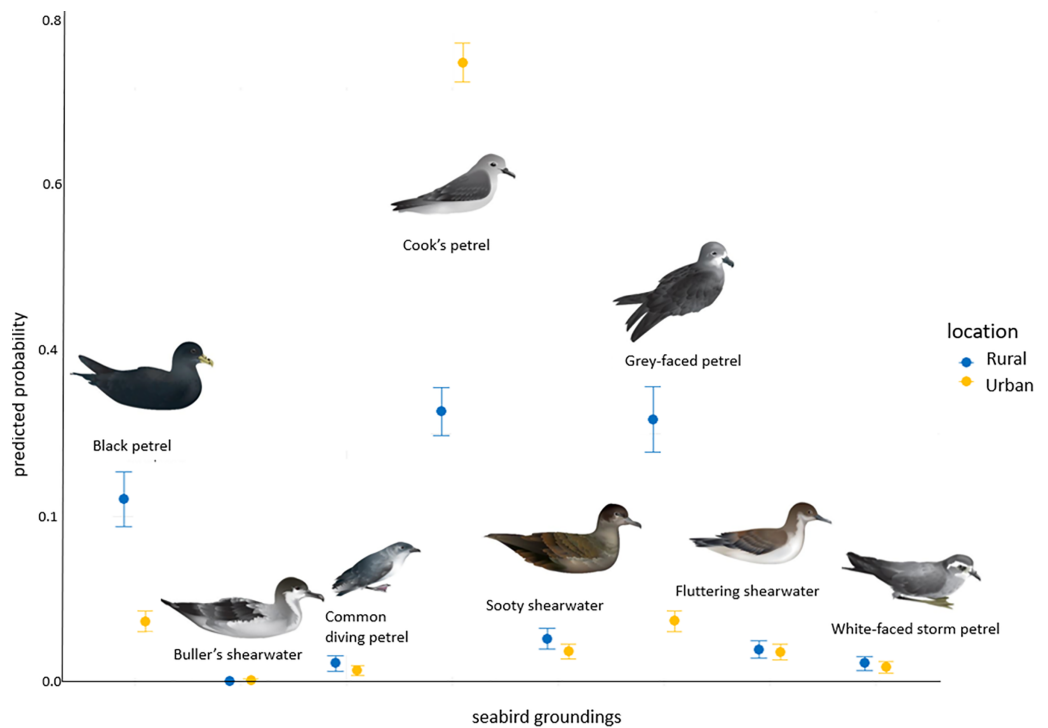


Figure 5 The predicted probability (+/-SE) of each seabird species landing in a grounded or rural area. [Full-size !\[\]\(1663bb69f307a960345edb0e712f8c02_img.jpg\) DOI: 10.7717/peerj.14237/fig-5](https://doi.org/10.7717/peerj.14237/fig-5)

Species specific groundings

Cook's petrels were most often grounded close to the central business district (CBD), with some scattered across Auckland (Fig. 6A). The black petrel groundings are more broadly distributed with occasional groundings around rural coastal areas in both eastern areas to the highly lit western areas (Fig. 6B). The grey-faced petrels were also broadly scattered but there was a greater concentration of groundings near the rural western areas which were lit up (Fig. 6C). For the fluttering shearwaters, some grounding hotspots included areas north of the CBD and areas around highly lit western area (Fig. 6D). The white-faced storm petrels were rarely grounded but if so they were found in the CBD or in western suburbs (Fig. 6E). The Buller's shearwaters groundings were restricted to south Auckland (Fig. 6F). The common diving petrels were grounded across central Auckland (Fig. 6G). The sooty shearwater groundings were also widely scattered, but with the majority by in the CBD, the western beaches and northern Auckland (Fig. 6H).

Changes over time

The proportion of grounded seabirds varied according to season and species (Fig. 7). More Cook's petrels are grounded during late summer/early autumn, with another smaller peak in late spring (Fig. 7). Black petrels and occasionally grey-faced petrels tend to become grounded later than the Cook's petrels, in late autumn (Fig. 7).

From 2018–2021, overall the number of seabirds groundings have increased, especially in the CBD locations, but also the rural areas (Figs. 8A–8D).

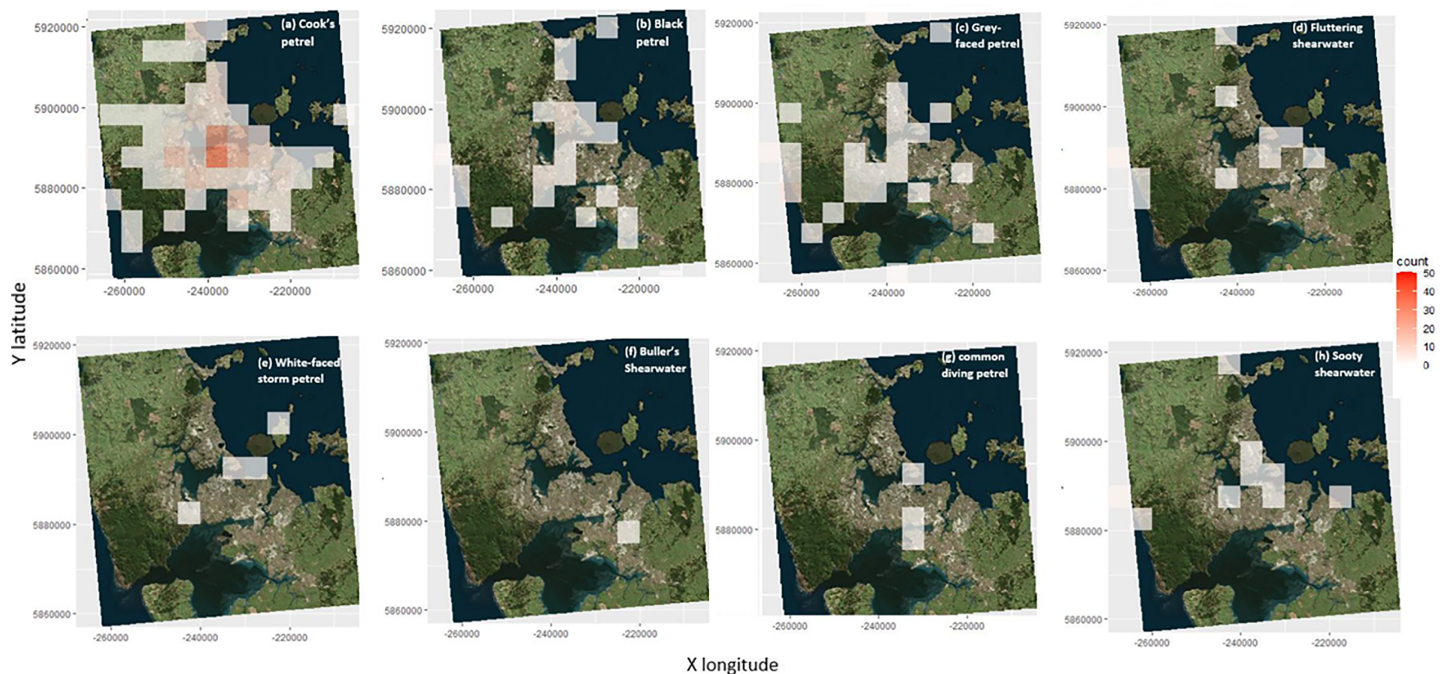


Figure 6 Locations of the groundings of the different seabird species across Auckland. (A) Locations of the groundings of Cook's petrels. (B) Locations of the groundings of the black petrels. (C) Locations of the groundings of the grey-faced petrels. (D) Locations of the groundings of the fluttering shearwaters. (E) Locations of the groundings of the white-faced storm petrels. (F) Locations of the groundings of the Buller's shearwaters. Locations of the groundings of the common diving petrels (G) Location of the groundings of the sooty shearwaters (H) The count is the number of seabirds grounded in every 5 km. [Full-size !\[\]\(ba1b80118482ccef74a5d718ca4d7242_img.jpg\) DOI: 10.7717/peerj.14237/fig-6](https://doi.org/10.7717/peerj.14237/fig-6)

DISCUSSION

Overall, we found a relationship between natural night sky brightness in Auckland and seabird groundings demonstrating that light pollution influences the number of seabird groundings. Groundings were common in the CBD and industrial areas, coinciding with a higher light pollution intensity and lower natural night sky brightness. We also documented that urban and rural regions near the coast (e.g., north Auckland) often have a high number of seabird groundings, again correlating with higher light pollution or low natural night sky brightness.

Internationally, light pollution tends to affect seabird fledglings, as they take their maiden flight (Rodríguez *et al.*, 2017a, 2017b) and our data is consistent with this. The majority of the seabirds found grounded in Auckland and brought to BirdCare Aotearoa were fledglings, and many of the groundings occurred during the fledgling season (Table 1). This is similar to the previous finding that most of the seabirds which collided with the cruise ship near Te-Hauturu-O-Toi were fledglings (Morton, 2018) which nest and breed in the Hauraki Gulf area near to Auckland (Gaskin, 2012; Gaskin & Rayner, 2013).

Regarding the total number of grounded seabirds, we found that most species were grounded similarly in urban and rural areas but this depended on species. Rural areas tend to have less light pollution in general, with the occasional hotspot, since there is a lower density of human population in these areas (Falchi *et al.*, 2019). This could lead to fewer

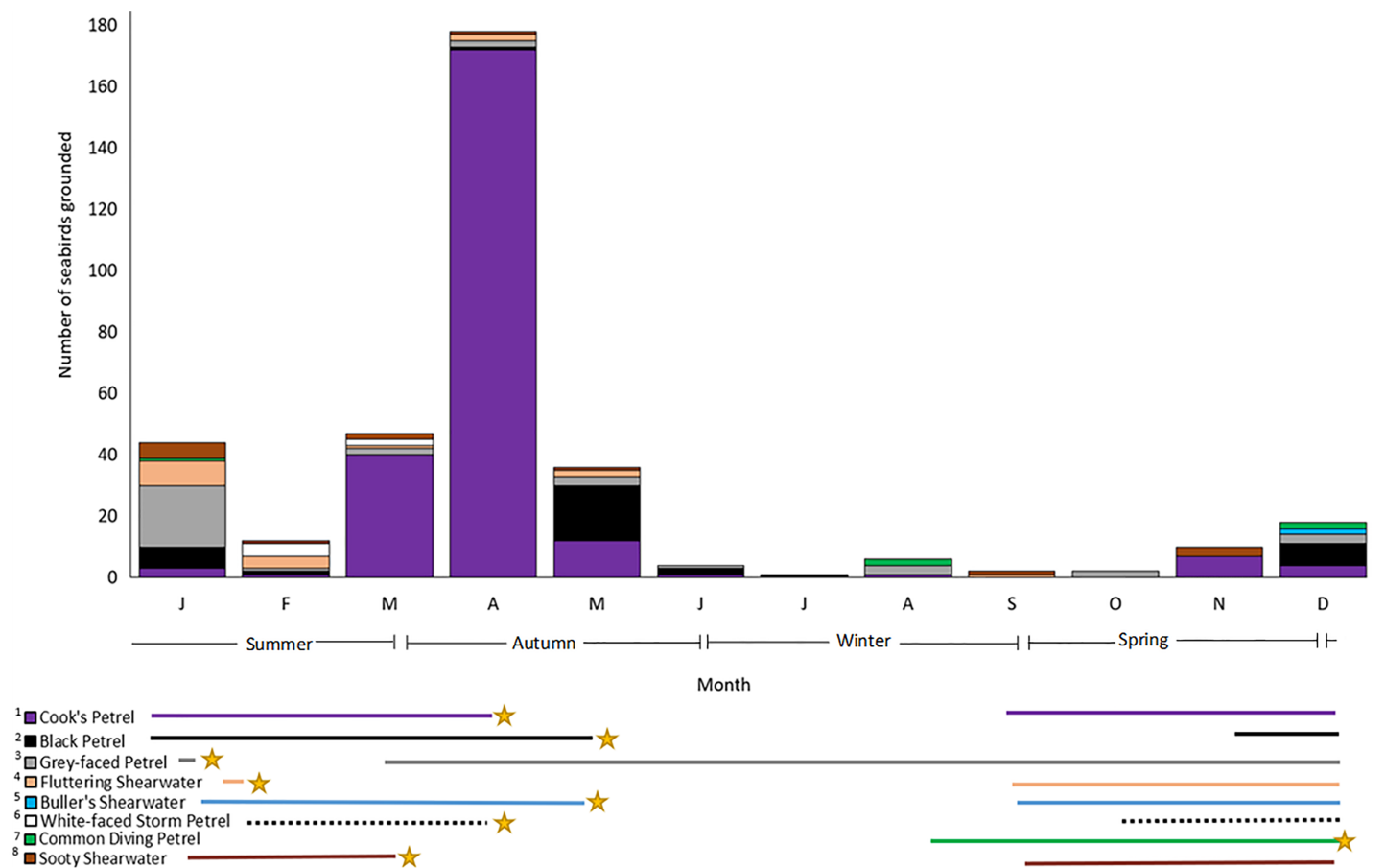


Figure 7 The absolute number of seabird groundings from each species from January 2018–September 2021 including the seasons. Lines under graph indicates seabird presence and the gold star indicates approximate fledgling dates. ¹Imber, West & Cooper (2003), ²Bell & Sim (2005), ³Imber (1976), ⁴Bell, Bell & Bell (2005), ⁵Taylor (2013), ⁶Southey (2013), ⁷Miskelly (2013), ⁸Hedd et al. (2012).

Full-size DOI: 10.7717/peerj.14237/fig-7

groundings of seabirds since there is less light causing disorientation. We note, however, that in rural areas there are likely fewer people and therefore fewer reports of seabird groundings, underrepresenting the true numbers in the rural areas (Laguna, Barbara & Metzger, 2014). Hence, we recommend pairing our work with systematic approaches that sample rural and urban areas where possible.

Most species were grounded in urban and rural areas at a similar rate. Some species such as the Cook's petrel was mainly grounded in urban areas. Whereas the grey-faced petrel and black petrel had a greater probability of grounding in the rural areas compared to urban areas. There are specific light pollution hotspots in those rural areas along the western beaches of Bethells, Muriwai and Piha which could increase the groundings in the rural areas for those seabird species. Therefore, it may not necessarily be that more seabirds are found grounded in areas with more people because there is more people to find them. Groundings maybe more indicative of light pollution rather than the human density or rural vs urban.

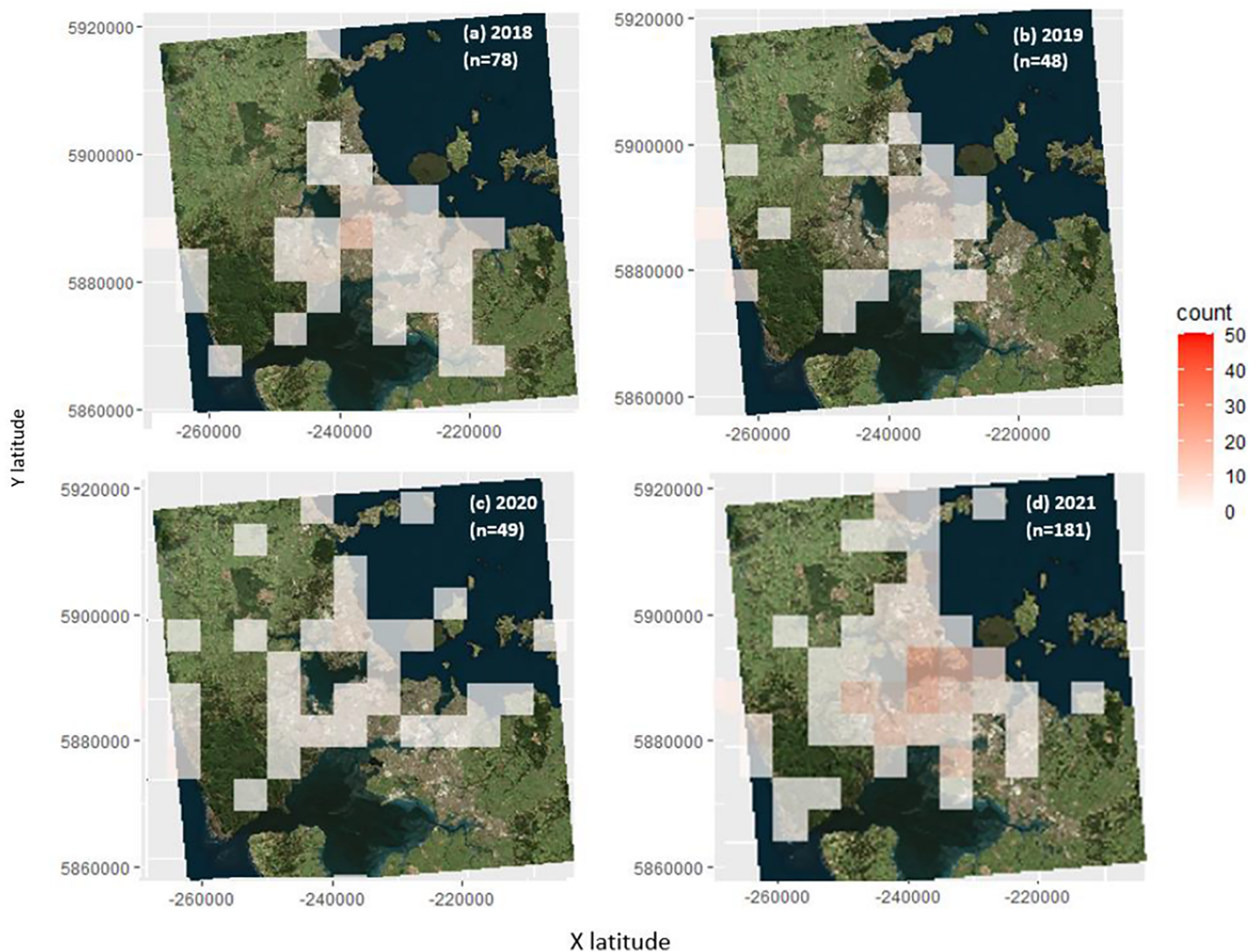


Figure 8 The groundings of all seabird species in 2018 (A), 2019 (B), 2020 (C) and 2021 (D). In the figure, n represents the number of seabirds grounded. [Full-size !\[\]\(b345a1c4255362eec3746050dd71ccac_img.jpg\) DOI: 10.7717/peerj.14237/fig-8](https://doi.org/10.7717/peerj.14237/fig-8)

As well as some rural areas having some patches of light pollution, another possible explanation of seabird groundings occurring along rural areas for certain seabird species could be due to their breeding locations. For example, the grey-faced petrel breed around the western beaches of Bethells, Muriwai and Piha (*Gaskin & Rayner, 2013*). Future research to explore distance from breeding colony and groundings is required.

Considering those locations have some high levels of light pollution, those seabirds are likely to become grounded at those locations. This finding aligns with some previous research regarding Cory's shearwater, *Calonectris borealis*, on Tenerife, the Canary Islands, where seabirds from colonies closer to light polluted areas were more likely to become grounded (*Rodríguez, Rodríguez & Negro, 2015*). It is also possible that light pollution from those rural locations are spilling into the areas of the breeding colonies (*Garrett, Donald & Gaston, 2020*) which could also influence seabird grounding.

Risk of ALAN: species differences

The difference in groundings between the species may not be indicative of seabird abundance. Some seabird species such as the Cook's petrel and black petrel which have a smaller population sizes were actually grounded more often compared to other species with a larger population size such as the common diving petrel and white-faced storm petrel (Table 1). It is also important to consider that population data for different species might include estimates from different times and using different methodologies (Friesen *et al.*, 2021; Gaskin & Rayner, 2013; Rayner *et al.*, 2007).

During the breeding season, at night, some Cook's petrels, including fledglings, fly across the Auckland isthmus from the islands of the Hauraki Gulf to the Tasman Sea to forage and then back across Auckland from the Tasman Sea to the Hauraki Gulf (Rayner *et al.*, 2007; Rayner *et al.*, 2008; Gaskin & Rayner, 2013). Since Cook's petrels have to cross the Auckland isthmus, and the associated city lights, there may be a greater chance of them becoming disoriented and grounded when compared to the other seabird species. In comparison, the Buller's shearwater and sooty shearwater migrate to the North Pacific (Guzman & Myres, 1983; Spear & Ainley, 1999; Warham, 1996). Therefore, since they migrate northward during the non-breeding season there is a smaller chance of them crossing over the Isthmus and being attracted towards the lights, however micro-migrations during breeding seasons where they cross over the Auckland Isthmus multiple times can occur where they could be vulnerable to groundings by lights (Gaskin & Rayner, 2013; Rayner *et al.*, 2017; Whitehead *et al.*, 2019).

Similar to Cook's petrels, the majority of black petrels were grounded in the CBD, again suggesting light pollution is critical. However, there were also some groundings close to the western beaches of Auckland where there is less people but also had a low amount of natural night sky. Considering the black petrel migrates to Chile and South America during the non-breeding season (Cabezas *et al.*, 2012) it seems unusual that a substantial number are grounded around Auckland, including along the Western beaches. However, black petrels often forage during the breeding season around the west and east coast of the North Island of New Zealand, off the continental shelves (Bell, Sim & Scofield, 2009). They may travel over the CBD en route to their foraging sites.

In general, the species that are rarely grounded in Auckland are those that are not commonly known to cross the Auckland isthmus for their foraging, breeding or migration (fluttering shearwaters, Buller's shearwaters, white-faced storm petrels, common diving petrels and sooty shearwaters). Fluttering shearwaters tend to remain around their local breeding area after the breeding season (Whitehead *et al.*, 2019). Fluttering shearwaters have been found to occasionally cross over to the Tasman Sea (Gaskin, 2013). Since they tend to remain close to their breeding colony, they could be less likely to interact with Auckland's city lights. Similarly, Buller's shearwaters are rarely grounded on land in Auckland although many were attracted to a single cruise ship in 2018 (Morton, 2018). Buller's shearwater is so far only known to breed on the Poor Knights Islands and has even been documented since the late 1970s to migrate to northern Pacific areas during the non-breeding season (Friesen *et al.*, 2021; Guzman & Myres, 1983; Nakamura &

Hasegawa, 1979). Therefore, the Buller's shearwaters are mainly avoiding the Auckland area and is less likely to become grounded by the lights.

White-faced storm petrels had few groundings, and only in the CBD and in west Auckland (Henderson). Once again, these areas had a greater amount of night sky pollution and therefore it suggests that light pollution/intensity is an important factor (*McNaughton et al., 2022*). Similar to the other seabird species which were rarely grounded in the Auckland region, the white-faced storm petrel migrates to the south Pacific and South America during the non-breeding season (*Imber, 1984*). Therefore, this species is less likely to cross over the isthmus during the fledgling season and become susceptible to light attraction.

Common diving petrels also had few groundings. This species often migrates south east towards the Antarctic polar front (*Rayner et al., 2017*). Furthermore, common diving petrels forage locally within a 45 km radius of their burrow (*Dunphy et al., 2020*). As a result, common diving petrels are also not likely to cross over the Auckland isthmus regularly and therefore less likely to become grounded by the lights compared to other species. However, when they were grounded, they were found close to the CBD and the industrial areas which would have the greatest number of light sources (*McNaughton et al., 2022*), suggesting that light pollution is an important factor for this species.

The sooty shearwater also migrates to the north Pacific during the non-breeding season to forage rarely crossing over Auckland city (*Shaffer et al., 2006; Spear & Ainley, 1999*). Therefore, these seabirds are less likely to be attracted and grounded from light pollution. Overall, susceptibility to light pollution intensity could correlate strongly with the location of seabirds foraging, breeding and migration paths. More research down this path is required.

Changes over time

The number of grounded seabirds has changed over 4 years. Between 2018 and 2020, there was a decline in seabird groundings, but this decline reversed in 2021. The decline in 2019 and 2020 (*Fig. 8*) could be a result of the coronavirus (COVID-19) which resulted in a nationwide and then city-wide lockdowns (*Henrickson, 2020*). This could have caused more people to stay in their homes, so they were less likely to discover grounded seabirds, and there may have been less light pollution, though this was not measured.

The increase in grounded seabirds from 2020–2021 could result from many different, non-mutually exclusive factors. Auckland's main lockdown ended on October 7th 2020 (*New Zealand Government, 2021*), leading to more people on the streets, and potential more probability of finding grounded seabirds. This uptick might also be due to an increase in Auckland's light pollution over the years (*McNaughton et al., 2022*), which could result in more seabirds becoming grounded in Auckland. However, the increase could also result from a greater public awareness of seabird fallout and groundings in Auckland. Therefore, there is a greater chance of people reporting a grounding and taking it to the bird rehabilitation facility, BirdCare Aotearoa. Campaign efforts have been made with news media articles and radio interviews (*Dexter, 2022*). Other articles for the local magazines and articles for the Department of Conservation are currently being written.

Furthermore, regular patrols of the CBD were established in April 2022 by the first author of this article. The date of the first patrol was 14th April 2022 in which volunteers would patrol sections of the CBD 2–3 times a week. These patrols will continue in the CBD in the next years between March to May to establish a systematic survey of seabirds grounded in the CBD. Similar patrols were observed in other locations, including Hawaii and the Canary islands when more members of the public were alerted to seabird groundings (*Miles et al., 2010; Rodríguez, Rodríguez & Negro, 2015; Travers et al., 2021*). These patrols help build awareness of the need for better conservation for seabirds grounded by light pollution.

Light pollution and sensory ecology

Along with differences in breeding, foraging and migration routes, another reason for species variation in groundings may be differences in their visual ecology. For example, black petrels were grounded at a much higher rate than common diving petrels. In addition to differences in migration and foraging locations affecting the seabird groundings, black petrels and common diving petrels also differ in their visual anatomy. Black petrels have a much larger eye socket volume relative to its body size compared to the common diving petrel (*Heswall et al., 2021*). Seabirds with relatively larger eyes may be more susceptible to light attraction. However, more research quantifying correlations between species-specific sensory anatomy and threats associated with visual signals is required. Previous work has shown such differences related to bycatch numbers with seabirds (*Heswall et al., 2021*).

CONCLUSIONS

Auckland's increased economic growth, expansion of the human population, and increased light pollution (*Bennie et al., 2014; Gallaway, Olsen & Mitchell, 2010; Jiang et al., 2017; McNaughton et al., 2022*) follows a trend in cities across the globe (*Czarnecka, Błażejczyk & Morita, 2021; Operti et al., 2018*). Given the negative consequence for these vulnerable species, mitigation techniques should be employed to reduce the light attraction of seabirds. Some studies have shown that using shields over their lights can reduce seabird light attraction (*Reed, Sincock & Hailman, 1985*). Changing the type and colour of light could affect seabird attraction (*Rodríguez, Dann & Chiaradia, 2017; Syposz et al., 2021*). Some cities in the US have had great success getting buildings in the CBD to turn off lights at night during migration, effectively reducing fallout and groundings (*Smith, 2009*).

Our study suggests light pollution predicts groundings in specific locations, suggesting modifications to the lighting of specific structures and buildings could make a strong and positive improvement in avoiding bird collisions. This study also emphasises the benefit of diverse collaborations and community science. We show here the power of combining community awareness, databasing of wildlife species, and ecologists' statistical modelling of seabird groundings with natural night sky brightness data can help provide information about locations where seabird groundings and why there is a higher seabird groundings in that location. Due to this collaboration with BirdCare Aotearoa involving some community science where people bring in grounded seabirds, we were able to correlate

seabird groundings with light pollution which can aid in mitigation management, conservation and can be applied to cities across the world.

We identified the hotspots and characteristics of the areas associated with seabird groundings. The brightness of a location impacts seabird groundings, with more brightly lit areas having a greater chance of seabird groundings compared to a dimmer area which has a lower chance of seabird groundings. It is not necessarily urban vs rural or population sizes but more to do with the specific seabird species and the natural night sky brightness. This research can be used to identify areas which are more brightly lit resulting in more grounded seabirds. Particular buildings and other anthropogenic structures which are brightly lit could be identified and the lights could be modified to reduce the light pollution and, consequently, seabird groundings. This can be applied internationally to other countries and cities to reduce light pollution, keep natural dark areas, reduce seabird groundings, and help their conservation.

ACKNOWLEDGEMENTS

We wish to acknowledge BirdCare Aotearoa and Iryll Findlay for providing us access to their comprehensive WRMD. I also wish to thank PhD student from the University of Oxford, Lynn Lewis-Bevan, who created the GIS code to map of the seabird fallout locations and helped with the GIS analysis. Joshua Dawes from the University of Auckland helped with the linear regression model for the GIS raster plots of the seabird fallout frequency and predicted night sky brightness. Scientific illustrator and artist Vivian Ward created the maps of Auckland and seabird breeding locations. Finally, we thank the community for finding and bringing injured birds to vets and BirdCare Aotearoa. We also thank the staff at BirdCare Aotearoa for their expertise and support.

ADDITIONAL INFORMATION AND DECLARATIONS

Funding

The authors received no funding for this work.

Competing Interests

The authors declare that they have no competing interests.

Author Contributions

- Ariel-Micaiah Heswall conceived and designed the experiments, performed the experiments, analyzed the data, prepared figures and/or tables, authored or reviewed drafts of the article, and approved the final draft.
- Lynn Miller conceived and designed the experiments, prepared figures and/or tables, provided access to the online database, and approved the final draft.
- Ellery J. McNaughton conceived and designed the experiments, prepared figures and/or tables, provided access to the online database, and approved the final draft.
- Amy L. Brunton-Martin analyzed the data, prepared figures and/or tables, authored or reviewed drafts of the article, and approved the final draft.

- Kristal E. Cain analyzed the data, prepared figures and/or tables, authored or reviewed drafts of the article, and approved the final draft.
- Megan R. Friesen analyzed the data, prepared figures and/or tables, authored or reviewed drafts of the article, and approved the final draft.
- Anne C. Gaskett conceived and designed the experiments, analyzed the data, prepared figures and/or tables, authored or reviewed drafts of the article, and approved the final draft.

Data Availability

The following information was supplied regarding data availability:

The code is available in the [Supplemental File](#).

Supplemental Information

Supplemental information for this article can be found online at <http://dx.doi.org/10.7717/peerj.14237#supplemental-information>.

REFERENCES

- Atchoi E, Mitkus M, Rodríguez A. 2020.** Is seabird light-induced mortality explained by the visual system development? *Conservation Science and Practice* **2(6)**:e195 DOI [10.1111/csp2.195](https://doi.org/10.1111/csp2.195).
- Auckland Council. 2012.** Towards an economic valuation of the Hauraki Gulf: a stock-take of activities and opportunities. Available at <https://www.aucklandcouncil.govt.nz/about-auckland-council/how-auckland-council-works/harbour-forums/Documents/economic-valuation-hauraki-gulf.pdf>.
- Auckland Council. 2018.** Auckland plan 2050 evidence report: demographics. Available at <https://www.aucklandcouncil.govt.nz/plans-projects-policies-reports-bylaws/our-plans-strategies/auckland-plan/about-the-auckland-plan/Evidence%20reports%20documents/evidence-report-demographics.pdf>.
- Bell E. 2013.** Black petrel. New Zealand Birds Online. Available at www.nzbirdsonline.org.nz.
- Bell EA, Sim JL. 2005.** *Survey and monitoring of black petrels on Great Barrier Island, 2003/2004*. Wellington: Science & Technical Publishing, Department of Conservation.
- Bell M, Bell BD, Bell EA. 2005.** Translocation of fluttering shearwater (*Puffinus gavia*) chicks to create a new colony. *Notornis* **52(1)**:11–15.
- Bell E, Sim J, Scofield RP. 2009.** *Population parameters and distribution of the black petrel, (Procellaria parkinsoni), 2005/2006*. Wellington, New Zealand: Department of Conservation.
- Bennie J, Davies TW, Duffy JP, Inger R, Gaston KJ. 2014.** Contrasting trends in light pollution across Europe based on satellite observed night time lights. *Scientific Reports* **4(1)**:1–6 DOI [10.1038/srep03789](https://doi.org/10.1038/srep03789).
- BirdLife International. 2021.** IUCN Red List for birds. Available at <http://www.birdlife.org> (accessed 22 December 2021).
- Bliss-Ketchum LL, de Rivera CE, Turner BC, Weisbaum DM. 2016.** The effect of artificial light on wildlife use of a passage structure. *Biological Conservation* **199**:25–28 DOI [10.1016/j.biocon.2016.04.025](https://doi.org/10.1016/j.biocon.2016.04.025).
- Bocetti CI. 2011.** Cruise ships as a source of avian mortality during fall migration. *The Wilson Journal of Ornithology* **123(1)**:176–178 DOI [10.1676/09-168.1](https://doi.org/10.1676/09-168.1).

- Brooks ME, Kristensen K, van Benthem KJ, Magnusson A, Berg CW, Nielsen A, Skaug HJ, Maechler M, Bolker BM. 2017. glmmTMB balances speed and flexibility among packages for zero-inflated generalized linear mixed modeling. *The R Journal* **9**(2):378–400 DOI 10.32614/RJ-2017-066.
- Cabezas LA, Ruiz J, Yates O, Bernal M. 2012. The black petrel (*Procellaria parkinsoni*) in pelagic waters off northern Chile: a southern extension to the known distribution and interactions with the pelagic longline fishery. *New Zealand Journal of Marine and Freshwater Research* **46**(4):537–544 DOI 10.1080/00288330.2012.661746.
- Czarnecka K, Błażejczyk K, Morita T. 2021. Characteristics of light pollution—a case study of Warsaw (Poland) and Fukuoka (Japan). *Environmental Pollution* **291**(1):118113 DOI 10.1016/j.envpol.2021.118113.
- Da Silva A, Valcu M, Kempenaers B. 2015. Light pollution alters the phenology of dawn and dusk singing in common European songbirds. *Philosophical Transactions of the Royal Society B: Biological Sciences* **370**(1667):20140126 DOI 10.1098/rstb.2014.0126.
- Dexter G. 2022. Bird rehabilitation centre asks Aucklanders to look out for lost seabirds. Newshub. Available at <https://www.newshub.co.nz/home/new-zealand/2022/03/bird-rehabilitation-centre-asks-aucklanders-to-look-out-for-lost-seabirds.html> (accessed 11 April 2022).
- Duarte C, Quintanilla-Ahumada D, Anguita C, Manríquez PH, Widdicombe S, Pulgar J, Silva-Rodríguez EA, Miranda C, Manríquez K, Quijón PA. 2019. Artificial light pollution at night (ALAN) disrupts the distribution and circadian rhythm of a sandy beach isopod. *Environmental Pollution* **248**:565–573 DOI 10.1016/j.envpol.2019.02.037.
- Dunphy BJ, Vickers SI, Zhang J, Sagar RL, Landers TJ, Bury SJ, Hickey AJR, Rayner MJ. 2020. Seabirds as environmental indicators: foraging behaviour and ecophysiology of common diving petrels (*Pelecanoides urinatrix*) reflect local-scale differences in prey availability. *Marine Biology* **167**(4):1–12 DOI 10.1007/s00227-020-3672-4.
- Eisenbeis G, Hänel A, McDonnell M, Hahs A, Breuste J. 2009. Light pollution and the impact of artificial night lighting on insects. In: *Ecology of Cities and Towns: A Comparative Approach*. New York, USA: Cambridge University Press, 243–263.
- Falchi F, Furgoni R, Gallaway T, Rybnikova N, Portnov B, Baugh K, Cinzano P, Elvidge C. 2019. Light pollution in USA and Europe: The good, the bad and the ugly. *Journal of environmental management* **248**:109227.
- Fellows I. 2019. OpenStreetMap: access to open street map raster images. (Version 0.3.4): R studio. Available at <https://CRAN.R-project.org/package=OpenStreetMap>.
- Folland CK, Karl TR. 2001. *Observed climate variability and change*. Cambridge, UK: Cambridge University Press.
- Fox J, Weisberg S. 2018. *An R companion to applied regression*. Thousand Oaks: Sage Publications.
- Friesen MR, Beggs JR, Gaskett AC. 2017. Sensory-based conservation of seabirds: a review of management strategies and animal behaviours that facilitate success. *Biological Reviews* **92**(3):1769–1784 DOI 10.1111/brv.12308.
- Friesen MR, Simpkins CE, Ross J, Anderson SH, Ismar-Rebitz SMH, Tennyson AJD, Taylor GA, Baird KA, Gaskin CP. 2021. New population estimate for an abundant marine indicator species, Rako or Buller's Shearwater (*Ardenna bulleri*). *Emu – Austral Ornithology* **121**(3):231–238 DOI 10.1080/01584197.2021.1924066.
- Gallaway T, Olsen RN, Mitchell DM. 2010. The economics of global light pollution. *Ecological Economics* **69**(3):658–665 DOI 10.1016/j.ecolecon.2009.10.003.
- Garrett JK, Donald PF, Gaston KJ. 2020. Skyglow extends into the world's Key Biodiversity Areas. *Animal Conservation* **23**(2):153–159 DOI 10.1111/acv.12480.

- Gaskin C. 2012.** Seabird restoration plan for Tawharanui Open Sanctuary. Report prepared for Auckland Council/Tawharanui Open Sanctuary Society Incorporated. Auckland: Auckland Council, Tawharanui Open Sanctuary Society Incorporated.
- Gaskin C. 2013.** Fluttering shearwater. New Zealand Birds. Available at <http://nzbirdsonline.org.nz/species/fluttering-shearwater> (accessed 30 March 2022).
- Gaskin C, Rayner M. 2013.** Seabirds of the Hauraki Gulf: natural history, research and conservation. Hauraki Gulf Forum. Available at <https://www.aucklandcouncil.govt.nz/about-auckland-council/how-auckland-council-works/harbour-forums/Documents/seabirds-hauraki-gulf.pdf>.
- Gaston KJ, Bennie J. 2014.** Demographic effects of artificial nighttime lighting on animal populations. *Environmental Reviews* **22**(4):323–330 DOI [10.1139/er-2014-0005](https://doi.org/10.1139/er-2014-0005).
- Glass JP, Ryan PG. 2013.** Reduced seabird night strikes and mortality in the Tristan rock lobster fishery. *African Journal of Marine Science* **35**(4):589–592 DOI [10.2989/1814232X.2013.860049](https://doi.org/10.2989/1814232X.2013.860049).
- Guzman JR, Myres MT. 1983.** The occurrence of shearwaters (*Puffinus* spp.) off the west coast of Canada. *Canadian Journal of Zoology* **61**(9):2064–2077 DOI [10.1139/z83-271](https://doi.org/10.1139/z83-271).
- Hartig F. 2022.** _DHARMa: residual diagnostics for hierarchical (Multi-Level/Mixed) regression models_. R package version 0.4. 5. Available at <https://CRAN.R-project.org/package=DHARMa>.
- Hayes B, Martin GR, Brooke ML. 1991.** Novel area serving binocular vision in the retinae of procellariiform seabirds. *Brain, Behavior and Evolution* **37**(2):79–84 DOI [10.1159/000114348](https://doi.org/10.1159/000114348).
- Hedd A, Montevecchi WA, Otley H, Phillips RA, Fifield DA. 2012.** Trans-equatorial migration and habitat use by sooty shearwaters *Puffinus griseus* from the South Atlantic during the nonbreeding season. *Marine Ecology Progress Series* **449**:277–290 DOI [10.3354/meps09538](https://doi.org/10.3354/meps09538).
- Henrickson M. 2020.** Kiwis and COVID-19: the aotearoa New Zealand response to the global pandemic. *The International Journal of Community and Social Development* **2**(2):121–133 DOI [10.1177/2516602620932558](https://doi.org/10.1177/2516602620932558).
- Heswall AM, Friesen MR, Martin ALB, Gaskett AC. 2021.** Seabird bycatch risk correlates with body size, and relatively larger skulls, bills, wings and sensory structures. *Marine Biology* **168**(5):1–13 DOI [10.1007/s00227-021-03873-4](https://doi.org/10.1007/s00227-021-03873-4).
- Hijmans J. 2021.** raster: geographic data analysis and modeling. (Version 3.5-2): R studio. Available at <https://CRAN.R-project.org/package=raster>.
- Holmes M. 2017.** Characterising deck strikes. Department of Conservation. Available at <https://www.doc.govt.nz/globalassets/documents/conservation/marine-and-coastal/marine-conservation-services/reports/characterising-deck-strikes-2017.pdf>.
- Hudecki J, Finegan E. 2018.** Songbird collision injuries during migration season. *Journal of Wildlife Rehabilitation* **38**(2):7–11.
- Imber MJ. 1976.** Breeding biology of the grey-faced petrel *Pterodroma macroptera gouldi*. *Ibis* **118**(1):51–64 DOI [10.1111/j.1474-919X.1976.tb02010.x](https://doi.org/10.1111/j.1474-919X.1976.tb02010.x).
- Imber M. 1984.** Migration of white-faced storm-petrels *Pelagodroma Marina* in the South Pacific and the status of the kermadec subspecies. *Emu – Austral Ornithology* **84**(1):32–35 DOI [10.1071/MU9840032](https://doi.org/10.1071/MU9840032).
- Imber M, West J, Cooper W. 2003.** Cook's petrel (*Pterodroma cookii*): historic distribution, breeding biology and effects of predators. *Notornis* **50**(4):221–230.
- Jiang W, He G, Long T, Wang C, Ni Y, Ma R. 2017.** Assessing light pollution in China based on nighttime light imagery. *Remote Sensing* **9**(2):135 DOI [10.3390/rs9020135](https://doi.org/10.3390/rs9020135).

- Laguna JM, Barbara N, Metzger B. 2014.** Light pollution impact on “tubenose” seabirds: an overview of areas of concern in the Maltese Islands. BirdLife Malta, Xemxija. Available at <http://birdlifemalta.org/wp-content/uploads/2016/08/BLM-Light-Pollution-Report-2014.pdf>.
- Le Corre M, Ollivier A, Ribes S, Jouventin P. 2002.** Light-induced mortality of petrels: a 4-year study from Réunion Island (Indian Ocean). *Biological Conservation* **105**(1):93–102 DOI [10.1016/S0006-3207\(01\)00207-5](https://doi.org/10.1016/S0006-3207(01)00207-5).
- Lenth R. 2016.** Least-squares means: the R package lsmeans. *Journal of Statistical Software* **69**:1–33 DOI [10.18637/jss.v069.i01](https://doi.org/10.18637/jss.v069.i01).
- Lorne JK, Salmon M. 2007.** Effects of exposure to artificial lighting on orientation of hatchling sea turtles on the beach and in the ocean. *Endangered Species Research* **3**(1):23–30 DOI [10.3354/esr003023](https://doi.org/10.3354/esr003023).
- Martin GR, Crawford R. 2015.** Reducing bycatch in gillnets: a sensory ecology perspective. *Global Ecology and Conservation* **3**(7):28–50 DOI [10.1016/j.gecco.2014.11.004](https://doi.org/10.1016/j.gecco.2014.11.004).
- McNaughton EJ, Gaston KJ, Beggs JR, Jones DN, Stanley MC. 2022.** Areas of ecological importance are exposed to risk from urban sky glow: Auckland, Aotearoa-New Zealand as a case study. *Urban Ecosystems* **25**:1–12 DOI [10.1007/s11252-021-01149-9](https://doi.org/10.1007/s11252-021-01149-9).
- Merkel FR, Johansen KL. 2011.** Light-induced bird strikes on vessels in Southwest Greenland. *Marine Pollution Bulletin* **62**(11):2330–2336 DOI [10.1016/j.marpolbul.2011.08.040](https://doi.org/10.1016/j.marpolbul.2011.08.040).
- Miles W, Money S, Luxmoore R, Furness RW. 2010.** Effects of artificial lights and moonlight on petrels at St Kilda. *Bird Study* **57**(2):244–251 DOI [10.1080/00063651003605064](https://doi.org/10.1080/00063651003605064).
- Miskelly C. 2013.** New Zealand Birds Online. Available at www.nzbirdsonline.org.nz/ (accessed 24 June 2020).
- Mitkus M, Nevitt GA, Kelber A. 2018.** Development of the visual system in a burrow-nesting seabird: Leach’s storm petrel. *Brain, Behavior and Evolution* **91**(1):4–16 DOI [10.1159/000484080](https://doi.org/10.1159/000484080).
- Morton J. 2018.** Conservationists saddened after seabirds die in boxes, NZ Herald. Available at <https://www.nzherald.co.nz/nz/conservationists-saddened-after-seabirds-die-in-boxes/4CMXVOT667ZRIHHCD5RVHGRROQ/>
- Nakamura K, Hasegawa M. 1979.** A brief note on distribution of Buller’s Shearwater, *Puffinus bulleri*, in Japan and the adjacent seas. *Journal of the Yamashina Institute for Ornithology* **11**(2):123–127 DOI [10.3312/jyio1952.11.2_123](https://doi.org/10.3312/jyio1952.11.2_123).
- Nechyba TJ, Walsh RP. 2004.** Urban Sprawl. *Journal of Economic Perspectives* **18**(4):177–200 DOI [10.1257/0895330042632681](https://doi.org/10.1257/0895330042632681).
- Nevitt GA. 2000.** Olfactory foraging by Antarctic procellariiform seabirds: life at high Reynolds numbers. *The Biological Bulletin* **198**(2):245–253 DOI [10.2307/1542527](https://doi.org/10.2307/1542527).
- New Zealand Government. 2021.** History of the COVID-19 alert system. Unite against COVID-19. Available at <https://covid19.govt.nz/about-our-covid-19-response/history-of-the-covid-19-alert-system/#timeline-of-key-events> (accessed 21 January 2022).
- OpenStreetMap. 2021.** OpenStreetMap. Retrieved 7 September, 2021. Available at <https://www.openstreetmap.org/#map=2/-41.2/-6.6>.
- Operti FG, Oliveira EA, Carmona HA, Machado JC, Andrade JS Jr. 2018.** The light pollution as a surrogate for urban population of the US cities. *Physica A: Statistical Mechanics and its Applications* **492**(6):1088–1096 DOI [10.1016/j.physa.2017.11.039](https://doi.org/10.1016/j.physa.2017.11.039).
- Pebesma E, Bivand R, Pebesma ME, RColorBrewer S, Collate AAA. 2012.** Package ‘sp’. The Comprehensive R Archive Network. Package ‘sp’. Available at <https://cran.r-project.org/web/packages/sp/sp.pdf>.

- Rayner MJ, Clout MN, Stamp RK, Imber MJ, Brunton DH, Hauber ME. 2007. Predictive habitat modelling for the population census of a burrowing seabird: a study of the endangered Cook's petrel. *Biological Conservation* 138(1–2):235–247 DOI 10.1016/j.biocon.2007.04.021.
- Rayner MJ, Hauber ME, Clout MN, Seldon DS, Van Dijken S, Bury S, Phillips RA. 2008. Foraging ecology of the Cook's petrel *Pterodroma cookii* during the austral breeding season: a comparison of its two populations. *Marine Ecology Progress Series* 370:271–284 DOI 10.3354/meps07660.
- Rayner MJ, Taylor GA, Gaskin CP, Dunphy BJ. 2017. Seasonal activity and unpredicted polar front migration of northern New Zealand Common Diving Petrels (*Pelecanoides urinatrix*). *Emu-Austral Ornithology* 117(3):290–298 DOI 10.1080/01584197.2017.1303332.
- Reed JR, Sincock JL, Hailman JP. 1985. Light attraction in endangered Procellariiform birds: reduction by shielding upward radiation. *The Auk* 102(2):377–383 DOI 10.2307/4086782.
- Rodríguez A, Dann P, Chiaradia A. 2017. Reducing light-induced mortality of seabirds: high pressure sodium lights decrease the fatal attraction of shearwaters. *Journal for Nature Conservation* 39:68–72 DOI 10.1016/j.jnc.2017.07.001.
- Rodríguez A, García D, Rodríguez B, Cardona E, Parpal L, Pons P. 2015. Artificial lights and seabirds: is light pollution a threat for the threatened Balearic petrels? *Journal of Ornithology* 156(4):893–902 DOI 10.1007/s10336-015-1232-3.
- Rodríguez A, Holmes ND, Ryan PG, Wilson K-J, Faulquier L, Murillo Y, Raine AF, Penniman JF, Neves V, Rodríguez B, Negro JJ, Chiaradia A, Dann P, Anderson T, Metzger B, Shirai M, Deppe L, Wheeler J, Hodum P, Gouveia C, Carmo V, Carreira GP, Delgado-Alburqueque L, Guerra-Correa C, Couzi F-X, Travers M, Corre ML. 2017a. Seabird mortality induced by land-based artificial lights. *Conservation Biology* 31(5):986–1001 DOI 10.1111/cobi.12900.
- Rodríguez A, Moffett J, Revoltós A, Wasiak P, McIntosh RR, Sutherland DR, Renwick L, Dann P, Chiaradia A. 2017b. Light pollution and seabird fledglings: targeting efforts in rescue programs. *The Journal of Wildlife Management* 81(4):734–741 DOI 10.1002/jwmg.21237.
- Rodríguez A, Rodríguez B. 2009. Attraction of petrels to artificial lights in the Canary Islands: effects of the moon phase and age class. *Ibis* 151(2):299–310 DOI 10.1111/j.1474-919X.2009.00925.x.
- Rodríguez A, Rodríguez B, Negro J. 2015. GPS tracking for mapping seabird mortality induced by light pollution. *Scientific Reports* 5(1):1–11 DOI 10.1038/srep10670.
- Ryan PG, Ryan EM, Glass JP. 2021. Dazzled by the light: the impact of light pollution from ships on seabirds at Tristan da Cunha. *Ostrich* 92:1–7 DOI 10.2989/00306525.2021.1984998.
- Shaffer SA, Tremblay Y, Weimerskirch H, Scott D, Thompson DR, Sagar PM, Moller H, Taylor GA, Foley DG, Block BA, Costa DP. 2006. Migratory shearwaters integrate oceanic resources across the Pacific Ocean in an endless summer. *Proceedings of the National Academy of Sciences of the United States of America* 103(34):12799–12802 DOI 10.1073/pnas.0603715103.
- Sharma G, Ram C, Rajpurohit L. 2011. Study of man-monkey conflict and its management in Jodhpur, Rajasthan (India). *Journal of Evolutionary Biology Research* 3(1):1–3.
- Smith M. 2009. Time to turn off the lights. *Nature* 457(7225):27 DOI 10.1038/457027a.
- Southey I. 2013. White-faced storm petrel. New Zealand Birds Online. Available at www.nzbirdsonline.org.nz (accessed 21 January 2022).
- Spear LB, Ainley DG. 1999. Migration routes of sooty shearwaters in the Pacific Ocean. *The Condor* 101(2):205–218 DOI 10.2307/1369984.
- Statistics New Zealand. 2013. Evaluation of administrative data sources for subnational population estimates. Wellington: Statistics New Zealand, 51.

- Syposz M, Gonçalves F, Carty M, Hoppitt W, Manco F. 2018. Factors influencing Manx Shearwater grounding on the west coast of Scotland. *Ibis* **160**(4):846–854 DOI [10.1111/ibi.12594](https://doi.org/10.1111/ibi.12594).
- Syposz M, Padget O, Willis J, Van Doren BM, Gillies N, Fayet AL, Wood MJ, Alejo A, Guilford T. 2021. Avoidance of different durations, colours and intensities of artificial light by adult seabirds. *Scientific Reports* **11**(1):1–13 DOI [10.1038/s41598-021-97986-x](https://doi.org/10.1038/s41598-021-97986-x).
- Taylor G. 2013. Buller's shearwater. New Zealand Birds Online. Available at www.nzbirdsonline.org.nz (accessed 21 January 2022).
- Taylor G, Rayner MJ. 2013. Cook's petrel. New Zealand Birds Online. Available at www.nzbirdsonline.org.nz (accessed 21 January 2022).
- Telfer T, Sincock J, Byrd G, Reed J. 1987. Attraction of Hawaiian seabirds to lights: conservation efforts and effects of moon phase. *Wildlife Society Bulletin (1973–2006)* **15**(3):406–413.
- Tennekes M. 2021. tmaptools: thematic map tools. (Version 3.1-1): R studio. Available at <https://CRAN.R-project.org/package=tmaptools>.
- The Wild Neighbors Database Project. 2021. Wildlife rehabilitation MD. Available at <https://www.wrmd.org/>.
- Travers MS, Driskill S, Stemen A, Geelhoed T, Golden DM, Koike S, Shipley AA, Moon HE, Anderson T, Bache M, Raine AF. 2021. Post-collision impacts, crippling bias, and environmental bias in a study of Newell's Shearwater and Hawaiian Petrel powerline collisions. *Avian Conservation and Ecology* **16**(1):15 DOI [10.5751/ACE-01841-160115](https://doi.org/10.5751/ACE-01841-160115).
- Troy JR, Holmes ND, Veech JA, Green MC. 2013. Using observed seabird fallout records to infer patterns of attraction to artificial light. *Endangered Species Research* **22**(3):225–234 DOI [10.3354/esr00547](https://doi.org/10.3354/esr00547).
- Urbanek S. 2009. rJava: Low-Level R to Java Interface. R package version 0.8-1. Available at <http://CRAN.R-project.org/package=rJava>.
- van Langevelde F, van Grunsven RHA, Veenendaal EM, Fijen TPM. 2017. Artificial night lighting inhibits feeding in moths. *Biology Letters* **13**(3):20160874 DOI [10.1098/rsbl.2016.0874](https://doi.org/10.1098/rsbl.2016.0874).
- Venables WN, Ripley BD. 2002. *Statistics complements to modern applied statistics with S*. Fourth Edition. Berlin: Springer.
- Warham J. 1996. *The behaviour, population biology and physiology of the petrels*. Cambridge: Academic Press.
- Whitehead EA, Adams N, Baird KA, Bell EA, Borelle SB, Dunphy BJ, Gaskin CP, Landers TJ, Russell JC. 2019. Threats to seabirds of northern Aotearoa New Zealand. Northern New Zealand Seabird Charitable Trust, Auckland, New Zealand, 76. Available at <https://hdl.handle.net/10652/4755>.
- Wickham H. 2016. Data analysis. In: *ggplot2*. Cham: Springer, 189–201.
- Wilhelm SI, Dooley SM, Corbett EP, Fitzsimmons MG, Ryan PC, Robertson GJ. 2021. Effects of land-based light pollution on two species of burrow-nesting seabirds in Newfoundland and Labrador, Canada. *Avian Conservation and Ecology* **16**(1):12 DOI [10.5751/ACE-01809-160112](https://doi.org/10.5751/ACE-01809-160112).
- Yeo J-H, Neo H. 2010. Monkey business: human—animal conflicts in urban Singapore. *Social & Cultural Geography* **11**(7):681–699 DOI [10.1080/14649365.2010.508565](https://doi.org/10.1080/14649365.2010.508565).
- Zissis G. 2020. Sustainable lighting and light pollution: a critical issue for the present generation, a challenge to the future. *Sustainability* **12**(11):4552 DOI [10.3390/su12114552](https://doi.org/10.3390/su12114552).