



Sequencing and annotation of the complete mitochondrial genome of a threatened labeonine fish, *Cirrhinus reba*

Mohammad Nazrul Islam¹, Shirin Sultana², Md. Jobaidul Alam^{3,4*}

¹Department of Biotechnology, Sher-e-Bangla Agricultural University, Dhaka 1207, Bangladesh

²Fisheries Biotechnology Division, National Institute of Biotechnology, Dhaka 1349, Bangladesh

³Department of Fisheries, Ministry of Fisheries and Livestock, Dhaka 1000, Bangladesh

⁴Interdisciplinary Program of Biomedical, Mechanical and Electrical Engineering, Pukyong National University, Busan 48513, Korea

The mitochondrial genome of a species is an essential resource for its effective conservation and phylogenetic studies. In this article, we present sequencing and characterization of the complete mitochondrial genome of a threatened labeonine fish, *Cirrhinus reba* collected from Khulna region of Bangladesh. The complete mitochondrial genome was 16,597 bp in size, which formed a circular double-stranded DNA molecule containing a total of 37 mitochondrial genes (13 protein-coding genes, 2 ribosomal RNA genes, and 22 transfer RNA genes) with two non-coding regions, an origin of light strand replication (OL) and a displacement loop (D-loop), similar structure with other fishes of Teleostei. The phylogenetic tree demonstrated its close relationship with labeonine fishes. The complete mitogenome of *Cirrhinus reba* (GenBank no. MN862482) showed 99.96% identity to another haplotype of *Cirrhinus reba* (AP013325), followed by 90.18% identity with *Labeo bata* (AP011198).

Keywords: complete mitogenome, Illumina sequencing, mitochondrial DNA, reba carp, threatened species

Introduction

The reba carp, *Cirrhinus reba* (Hamilton, 1822) is an important freshwater labeonine fish of the family Cyprinidae and the order Cypriniformes. The species is geographically distributed over the Indian sub-continent including Bangladesh, India, Nepal, and Pakistan [1]. In Bangladesh, it is locally known as reba carp, tatkini, raik or bhagna bata and the natural habitats of the fish include the rivers, small creeks, natural depressions, and floodplains [2]. Siltation, conversion of wetlands, drying-up, and fragmentation of habitats, aquatic pollution, over fishing and climate changes have posed an alarming threat to the existence of many fish species including *C. reba*. Consequently, among 54 threatened freshwater fishes, *C. reba* is categorized as a near threatened (NT) species in Bangladesh [3]. In India, *C. reba* has been reported as vulnerable species based on International Union for Conservation of Nature (IUCN) criteria [4]. A few reports on the induced-breeding [5], stock identification [2], cryogenic preservation of sperm [1] have potentiated for the hatchery-based selective breeding, identification of the population

status and the conservation of *C. reba*.

The mitochondrial genome is composed of a circular, double-stranded DNA with semi-autonomous central dogma machinery and situated in the mitochondria of each vertebrate cell outside the nuclear genome [6]. It possesses 37 genes in specific order that code for 13 polypeptides necessary for the oxidative phosphorylation (OxPhos) system [7]. The mitochondrial DNA of most metazoan species is predominantly inherited maternally [8]. The clonal inheritance, coupled with a substitution rate is typically 5–10 times more than that of nuclear DNA [9]. Mitochondrial DNA is an essential raw material as molecular marker for the investigation of population genetics [10], phylogenetic and evolutionary histories [11], genetic barcoding, and biodiversity of species [12], genetic disorder or mitochondrial diseases [13].

In the present study, we characterized the complete mitochondrial genome of *C. reba* using next-generation sequencing (NGS) with Illumina MiSeq platform. Sequence of the full mitochondrial genome would be an essential source to design specific molecular markers, for instance, single nucleotide polymorphisms studying population genetic structure. Moreover, detailed decoding of the mitochondrial genome would be a valuable insight for resolving any conservation and management strategies of the culture promising but NT fish.

Methods

Specimen collection, genomic, and mitochondrial DNA isolation

The specimen was collected from Khulna, Bangladesh (22°50'44.3"N, 89°32'27.7"E) in March 2017. The specimen is stored at the Department of Biotechnology, Sher-e-Bangla Agricultural University, Sher-e-Bangla Nagar, Dhaka 1207, Bangladesh. The genomic DNA was extracted from the fish tissue using the DNeasy Blood and Tissue Kit (Qiagen, Hilden, Germany) according to the manufacturer's manual. The mitochondrial partial COI sequence was amplified for the species confirmation using the BCL-BCH primers [14]. The specimen was confirmed based on both morphological characteristics and its COI sequence with 100% identity to the GenBank database (GenBank no. AP013325). The mitochondrial DNA was extracted with a commercially available mitochondrial DNA isolation kit (Abcam, Cambridge, UK) followed by the manufacturer's protocol and DNA concentration was checked by qubit fluorometer.

Library construction and NGS

In advance to the library preparation, the purified mitochondrial DNA was fragmented as 300–350 bp by Covaris M220 Fo-

cused-Ultrasonicator (Covaris Inc., Woburn, MA, USA). A library was prepared by TruSeq RNA library preparation kit V2 (Illumina, San Diego, CA, USA) which needed a couple of steps including end repair reaction, adenylation at 3' ends, adaptor ligation, and enrichment of DNA fragments by PCR. To have better quality DNA, the enriched DNA library templates were purified using DNA purification kit (RBC Bioscience, Jerusalem, Israel) and quantified using qubit fluorometer. Size, purity, and quality of the constructed DNA libraries were further validated by the 2100 Bioanalyzer (Agilent Technologies, Santa Clara, CA, USA). Finally, the NGS was performed using the Illumina MiSeq platform 2 × 300 bp pair ends (Illumina).

Sequence assembly and annotation of the mitochondrial genome

The MiSeq raw reads were assembled using the Geneious Prime 2020.0.3 software [15] to construct a complete mitogenome of *Cirrhinus reba*. The gene order, sequences, and sizes of each of the 13 protein-coding genes and 2 ribosomal RNA genes were organized with the ORF finder program (<https://www.ncbi.nlm.nih.gov/orffinder/>) following a reference mitogenome of *Cirrhinus reba* (GenBank no. AP013325). All transfer RNA genes were identified, the positions of their anticodons were predicted by using the ARWEN software [16].

Gene mapping and phylogenetic tree construction

The circular gene map of *C. reba* was drawn by OGDRAW software (<https://chlorobox.mpimp-golm.mpg.de/OGDraw.html>). The phylogenetic tree was constructed by MEGA7 program using the Minimum Evolution (ME) algorithm [17] performing with 1,000 bootstrap replications.

Results and Discussion

Genome organization

The complete mitochondrial genome of *C. reba* (GenBank no. MN862482) is a closed circular molecule of 16,597 bp in size. It possesses the typical combination of 37 genes including 13 protein-coding genes, 22 tRNA genes, two genes for ribosomal RNA subunits (12SrRNA and 16SrRNA), and two non-coding regions (control region, D-loop, and origin of light strand, OL) (Table 1, Fig. 1). Twenty-eight genes were located on the heavy (H) strand, while the ND6 gene and eight tRNA genes were transcribed from the light (L) strand (Fig. 1).

The overall nucleotide composition of *C. reba* mitogenome was found biased toward A + T contents (58.93%, A = 32.91% and T = 26.02%) over the G + C contents (41.07%, G = 15.16% and C

Table 1. Organizational characteristics of the complete mitochondrial genome of *Cirrhinus reba*

Gene/element	Strand	Nucleotide position		Size (bp)	Codon		Anti-codon	Intragenic nucleotides	A + T (%)
		From	To		Start	End			
tRNA ^{Phe}	H	1	70	70	-	-	GAA	0	52.9
12S rRNA	H	71	1,024	954	-	-		0	51.0
tRNA ^{Val}	H	1,025	1,096	72	-	-	TAC	0	50.0
16S rRNA	H	1,097	2,783	1,687	-	-		0	57.6
tRNA ^{Leu}	H	2,784	2,860	77	-	-	TAA	0	48.1
ND1	H	2,861	3,835	975	ATG	TAA		3	58.6
tRNA ^{Ile}	H	3,839	3,912	74	-	-	GAT	-3	54.1
tRNA ^{Gln}	L	3,910	3,980	71	-	-	TTG	1	60.6
tRNA ^{Met}	H	3,982	4,050	69	-	-	CAT	0	42.0
ND2	H	4,051	5,096	1,046	ATG	TA-		-1	59.6
tRNA ^{Trp}	H	5,096	5,167	72	-	-	TCA	1	63.9
tRNA ^{Ala}	L	5,169	5,237	69	-	-	TGC	1	69.6
tRNA ^{Asn}	L	5,239	5,311	73	-	-	GTT	0	52.1
OL	-	5,312	5,345	34	-	-		0	52.9
tRNA ^{Cys}	L	5,346	5,412	67	-	-	GCA	1	52.2
tRNA ^{Tyr}	L	5,414	5,483	70	-	-	GTA	1	48.6
COX1	H	5,485	7,035	1,551	GTG	TAA		1	58.3
tRNA ^{Ser}	L	7,037	7,105	69	-	-	TGA	4	53.6
tRNA ^{Asp}	H	7,110	7,181	72	-	-	GTC	15	62.5
COX2	H	7,197	7,887	691	ATG	T--		-1	59.6
tRNA ^{Lys}	H	7,887	7,964	78	-	-	TTT	0	55.1
ATP8	H	7,965	8,129	165	ATG	TAG		-7	61.8
ATP6	H	8,123	8,806	684	ATG	TAA		-1	61.4
COX3	H	8,806	9,591	786	ATG	TAA		0	55.9
tRNA ^{Gly}	H	9,592	9,663	72	-	-	TCC	0	66.7
ND3	H	9,664	10,012	349	ATG	T--		0	59.3
tRNA ^{Arg}	H	10,013	10,082	70	-	-	TCG	0	51.4
ND4L	H	10,083	10,379	297	ATG	TAA		-7	55.6
ND4	H	10,373	11,753	1,381	ATG	T--		0	59.1
tRNA ^{His}	H	11,754	11,822	69	-	-	GTG	-1	69.6
tRNA ^{Ser}	H	11,822	11,892	71	-	-	GCT	-1	59.2
tRNA ^{Leu}	H	11,892	11,966	75	-	-	TAG	2	60.0
ND5	H	11,969	13,792	1,824	ATG	TAA		-4	62.2
ND6	L	13,789	14,310	522	ATG	TAA		-1	57.7
tRNA ^{Glu}	L	14,310	14,380	71	-	-	TTC	4	62.0
CYTB	H	14,385	15,525	1,141	ATG	T--		0	60.1
tRNA ^{Thr}	H	15,526	15,598	73	-	-	TGT	-4	47.9
tRNA ^{Pro}	L	15,595	15,667	73	-	-	TGG	0	57.5
Control region (D-loop)	-	15,668	16,597	930	-	-	-	0	67.6

= 25.91%) indicating a strong anti-guanine bias commonly observed in fishes [18]. This pattern was almost the same as the Cyprinid species, which has 15.70% of G content [19]. A total of 31 bp overlapping region was found in 11 different locations of the *C. reba* mitogenome. Besides, 11 intergenic spacers were present in the mitogenome involving a total size of 34 bp. The longest spacer

included a nucleotide sequence of 15 bp which located between the tRNA Asp and COX2 genes. As shown in Table 1, the positive (+) numbers indicate intergenic space/gap between genes, the negative (-) numbers indicate overlapping between genes, and the zero (0) revealed either overlap or space does not exist between genes in the *C. reba* mitogenome.

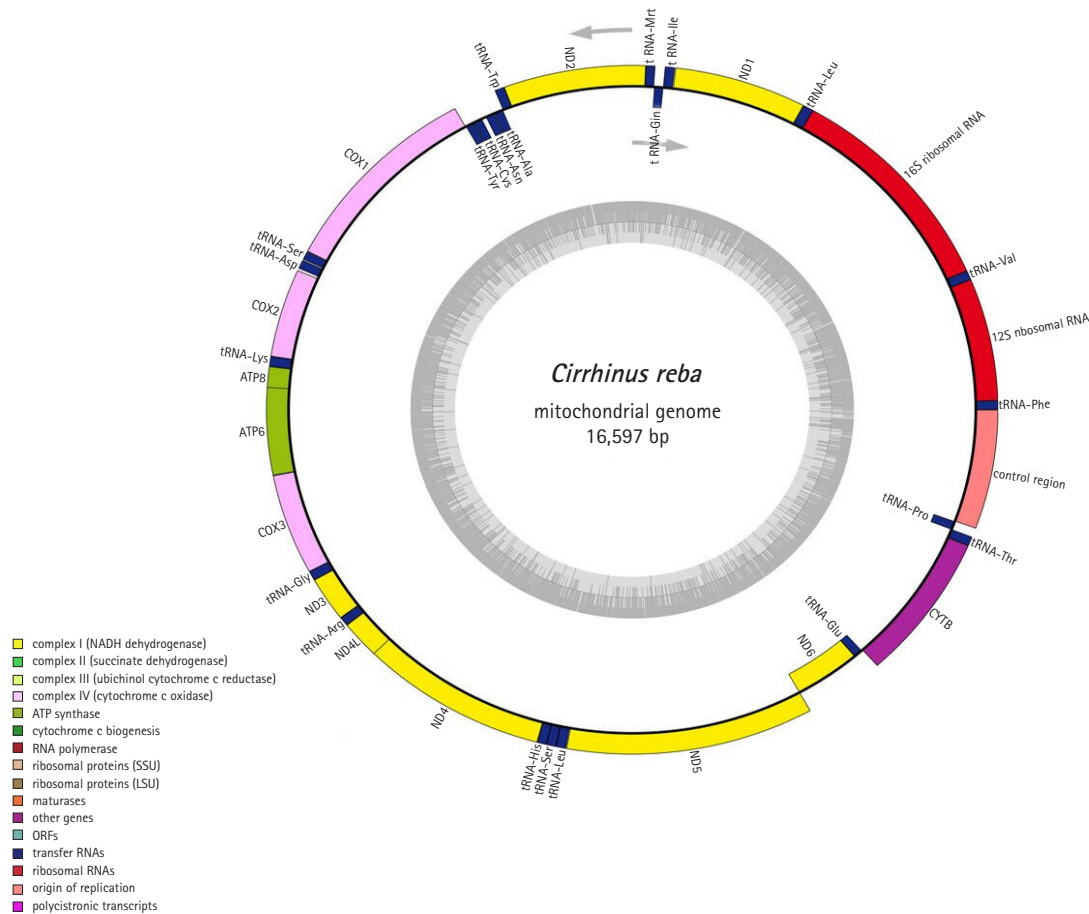


Fig. 1. Gene mapping and organization of mitochondrial genome of the *Cirrhinus reba*.

Protein-coding genes

The mitochondrial genome of *C. reba* is consisted of 13 canonical protein-coding genes (PCGs) of 11,412 bp in length, accounted for 68.76% of the total mitogenome. With exception to the reading frame of ND6 gene, which was oriented clock-wise direction on the light strand, reading frames of all other PCGs were oriented counter-clock wise direction on the heavy strand (H). The shortest PCG was ATP8 (165 bp), whereas the longest one was ND5 (1,824 bp). Except for the COX1 gene with an unusual and alternative start codon, GTG (Valine), other twelve PCGs started with the typical translation initiation codon, ATG (Methionine). The open reading frame of ATP8 used TAG as stop codon, whereas, the remaining seven PCGs (*ND1*, *COX1*, *ATP6*, *COX3*, *ND4L*, *ND5*, and *ND6*) terminated with the typical stop codon (TAA), as in other vertebrates [20]. Four PCGs, *COX2*, *ND3*, *ND4*, *CYTB* ended with an incomplete termination codon (T--), while the *ND2* gene ended with "TA-" (Table 1). These incomplete stop codons are assumed to be completed by using the posttranscriptional polyadenylation, poly-A tail [21]. These kinds of variations in the termination codons are not uncommon among vertebrate mito-

chondrial genes and previously reported in other bony fishes [22].

Analysis of the sequences of 13 PCGs showed that overall percentage of A and T contents (58.93%) also reflected in the codon usage of PCGs where the first, second and third position of the codons estimated the A plus T contents as 49.6%, 58.9%, and 69%, respectively (Table 2). The G content (15%) of all PCGs presents obvious anti-guanine characteristics as similar to other bony fishes [23]. Here, we observed that the 2nd and 3rd position of the codons were dominated by T (40.4%) and A (46.7%) contents, respectively over the C and G contents (Table 2). A very strong bias against the guanine contents (4.9%) was also demonstrated at the wobble or third position of codons across all 13 PCGs.

Ribosomal RNA and transfer RNA genes

The mitogenome of *C. reba* possesses two genes encoding two ribosomal RNA subunits, a small (12S) and a large (16S) which were typical as in other mitogenomes. Both the ribosomal RNA genes were located on the H-strand and consisted of 15.91% (2,641 bp) of the total circular mitogenome. The 12S rRNA (946 bp in length) located between the tRNA^{Phe} and tRNA^{Val}, whereas

Table 2. Base composition of PCGs of *Cirrhinus reba* mitochondrial genome

	Base composition (%)					Total
	T	C	A	G	A + T	
PCGs						
<i>ND1</i>	27.2	27.7	31.4	13.7	58.6	975
<i>ND2</i>	24.0	29.3	35.6	11.1	59.6	1,046
<i>COX1</i>	30.0	24.8	28.3	16.8	58.3	1,551
<i>COX2</i>	27.5	25.3	32.1	15.1	59.6	691
<i>ATP8</i>	26.7	26.7	35.2	11.5	61.8	165
<i>ATP6</i>	30.0	25.7	31.4	12.9	61.4	684
<i>COX3</i>	25.8	28.4	30.0	15.8	55.9	786
<i>ND3</i>	30.4	27.2	28.9	13.5	59.3	349
<i>ND4L</i>	28.6	29.3	26.9	15.2	55.6	297
<i>ND4</i>	26.5	27.9	32.6	13.0	59.1	1,381
<i>ND5</i>	27.5	26.0	34.7	11.8	62.2	1,824
<i>ND6</i>	44.1	11.1	13.6	31.2	57.7	522
<i>CYTb</i>	28.0	26.2	32.2	13.7	60.1	1,141
Position in the codon						
1st	24.2	24.3	25.4	26.1	49.6	3,807
2nd	40.4	27.0	18.6	14.0	58.9	3,803
3rd	22.3	26.1	46.7	4.9	69.0	3,802
Across all PCGs	28.9	25.8	30.2	15.0	59.2	11,412

Reverse complementary sequence was used for *ND6* gene which was encoded on the L-strand.
PCG, protein-coding gene.

the 16S rRNA was 1,695 bp in length and was located between tRNA^{Val} and tRNA^{Leu}. The A + T content (55.24%) was higher than the G plus C content (44.76%) in the ribosomal RNAs where the nucleotide, adenine was more prevalent (35.25%) followed by cytosine (24.50%) as similar to the previous reports in other bony fishes [24].

The 22 tRNA genes were identified in the mitochondrial of *C. reba* which demonstrated a varied size of 67–78 bp in length, estimating a total length of 1,580 bp (~9.6% of the total mitogenome) (Table 1). Among all tRNA genes, eight tRNAs were located on the L-strand, whereas the remaining fourteen tRNA genes were on the H-strand (Fig. 1). The highest content of A and T was observed in tRNA^{Ala} and tRNA^{His} (69.6%), whereas that of the lowest content was observed in tRNA^{Met} (42%) which was consisted of previously published reports on other teleosts [24]. All these 22 tRNA genes were predicted to capable of folding typical cloverleaf secondary structures and showed great similarity as it is in other vertebrate mitogenomes [23].

Non-coding regions

Like other animal mitochondrial genome, *C. reba* contained no introns and possessed two non-coding regions, an OL and a control region or displacement loop (D-loop) region. The OL region,

consisted of 34 nucleotides was situated between tRNA^{Asn} and tRNA^{Cys} and was oriented on the L-strand in a cluster of five tRNA genes (WANCY region). D-loop region of *C. reba* consisted of 930 nucleotides which represented 5.6 % of the total mitogenome. The control region was overrepresented by A plus T content (67.6 %). The AT-rich D-loop contains promoters and an origin of replication of mtDNA which are essential for transcription and replication of mtDNA, respectively [25]. The D-loop region is very flexible to size variation.

Phylogenetic relationship analysis

The phylogenetic relationship of *C. reba* with other labeonine fishes was constructed using 13 complete mitochondrial genomes of the subfamily Labeoninae by MEGA 7.0 program. The mitogenome of our species of interest, *C. reba* (GenBank no. MN862482) showed 99.6% sequence identity with different haplotype of *C. reba* (GenBank no. AP013325, deposited from Japan), followed by 90.18% identity with *Labeo bata* (AP011198). Slight variations between two haplotypes of *C. reba* might reflect different populations of the same species. However, two haplotypes of *C. reba* was clearly isolated from other 11 species of labeonine fishes and formed a separate clade (Fig. 2). Two close relatives of *C. reba*, *L. pangusia*, and *C. cirrhosis* have already been considered globally as

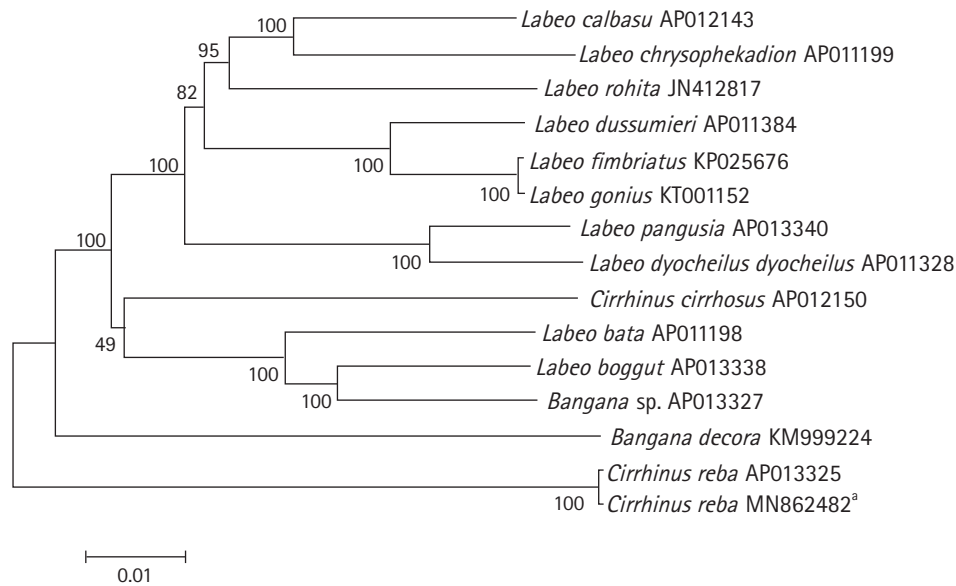


Fig. 2. Phylogenetic tree of *Cirrhinus reba* in the subfamily Labeoninae. The phylogenetic relationship was analyzed by MEGA7 program with Minimum Evolution algorithm and 1,000 bootstrap replications. GenBank accession number of each species is shown next to its scientific name. ^aReported in the present study.

NT and vulnerable species, respectively [3]. Therefore, we alarmingly recommend further studies relating to conservation of the labeonine fish including reba carp.

ORCID

Mohammad Nazrul Islam: <https://orcid.org/0000-0001-5692-3566>

Shirin Sultana: <https://orcid.org/0000-0002-0607-1497>

Md. Jobaidul Alam: <https://orcid.org/0000-0002-3594-8147>

Authors' Contribution

Conceptualization: MNI, MJA. Data curation: MNI, MJA. Formal analysis: MNI, MJA. Funding acquisition: MNI. Methodology: MNI, MJA. Writing - original draft: MNI, SS. Writing - review & editing: SS, MJA.

Conflicts of Interest

No potential conflict of interest relevant to this article was reported.

References

- Sultana S, Hasan MM, Hossain MS, Islam MR, Salimullah M, Sarder MR, et al. Cryogenic preservation of critically endangered *Cirrhinus reba* fish sperm. *Int J Fish Aquat Stud* 2017;5:334-339.

- Ethin R, Hossain MS, Roy A, Rutegwa M. Stock identification of minor carp, *Cirrhinus reba*, Hamilton 1822 through landmark-based morphometric and meristic variations. *Fish Aquat Sci* 2019;22:12.
- International Union for Conservation of Nature. Bangladesh: Red Book of Threatened Fishes of Bangladesh. Gland: International Union for Conservation of Nature, 2015.
- Sarkar UK, Negi RS, Deepak PK, Singh SP, Srivastava SM, Roy D. Captive breeding of vulnerable Indian carp *Cirrhinus reba* with Ovaprim for conservation of wild populations. *Aquac Asia* 2004;9:5-7.
- Rahman MA, Zaher M, Azimuddin KM. Development of fingerling production techniques in nursery ponds for the critically endangered reba carp, *Cirrhinus ariza* (Hamilton, 1807). *Turk J Fish Aquat Sci* 2009;9:165-172.
- Artuso L, Romano A, Verri T, Domenichini A, Argenton F, Santorelli FM, et al. Mitochondrial DNA metabolism in early development of zebrafish (*Danio rerio*). *Biochim Biophys Acta* 2012;1817:1002-1011.
- Anderson S, Bankier AT, Barrell BG, de Bruijn MH, Coulson AR, Drouin J, et al. Sequence and organization of the human mitochondrial genome. *Nature* 1981;290:457-465.
- Giles RE, Blanc H, Cann HM, Wallace DC. Maternal inheritance of human mitochondrial DNA. *Proc Natl Acad Sci U S A* 1980;77:6715-6719.
- Brown WM, George M Jr, Wilson AC. Rapid evolution of animal mitochondrial DNA. *Proc Natl Acad Sci U S A* 1979;76:1967-

- 1971.
10. Ingman M, Gyllensten U. mtDB: Human Mitochondrial Genome Database, a resource for population genetics and medical sciences. *Nucleic Acids Res* 2006;34:D749-D751.
 11. Macey JR, Papenfuss TJ, Kuehl JV, Fourcade HM, Boore JL. Phylogenetic relationships among amphisbaenian reptiles based on complete mitochondrial genomic sequences. *Mol Phylogenet Evol* 2004;33:22-31.
 12. Meusnier I, Singer GA, Landry JF, Hickey DA, Hebert PD, Hajibabaei M. A universal DNA mini-barcode for biodiversity analysis. *BMC Genomics* 2008;9:214.
 13. Saxena N, Taneja N, Shome P, Mani S. Mitochondrial donation: a boon or curse for the treatment of incurable mitochondrial diseases. *J Hum Reprod Sci* 2018;11:3-9. 29681709
 14. Handy SM, Deeds JR, Ivanova NV, Hebert PD, Hanner RH, Ormos A, et al. A single-laboratory validated method for the generation of DNA barcodes for the identification of fish for regulatory compliance. *J AOAC Int* 2011;94:201-210.
 15. Kearsley M, Moir R, Wilson A, Stones-Havas S, Cheung M, Sturrock S, et al. Geneious Basic: an integrated and extendable desktop software platform for the organization and analysis of sequence data. *Bioinformatics* 2012;28:1647-1649.
 16. Laslett D, Canback B. ARWEN: a program to detect tRNA genes in metazoan mitochondrial nucleotide sequences. *Bioinformatics* 2008;24:172-175.
 17. Kumar S, Stecher G, Tamura K. MEGA7: Molecular Evolutionary Genetics Analysis version 7.0 for bigger datasets. *Mol Biol Evol* 2016;33:1870-1874.
 18. Cheng J, Ma GQ, Song N, Gao TX. Complete mitochondrial genome sequence of bighead croaker *Collichthys niveatus* (Perciformes, Sciaenidae): a mitogenomic perspective on the phylogenetic relationships of Pseudosciaenidae. *Gene* 2012;491:210-223.
 19. Alam MJ, Andriyono S, Eunus AT, Rahman MM, Kim HW. Mitochondrial genome of Mola carplet, *Amblypharyngodon mola* (Hamilton, 1822) and its evolutionary relationship in subfamily Danioninae. *Mitochondrial DNA B Resour* 2019;4:650-651.
 20. Satoh TP, Miya M, Mabuchi K, Nishida M. Structure and variation of the mitochondrial genome of fishes. *BMC Genomics* 2016;17:719.
 21. Ojala D, Montoya J, Attardi G. tRNA punctuation model of RNA processing in human mitochondria. *Nature* 1981;290:470-474.
 22. Miya M, Nishida M. Organization of the mitochondrial genome of a deep-sea fish, *Gonostoma gracile* (Teleostei: Stomiiformes): first example of transfer RNA gene rearrangements in bony fishes. *Mar Biotechnol (NY)* 1999;1:416-426.
 23. Zhao L, Gao T, Lu W. Complete mitochondrial DNA sequence of the endangered fish (*Bahaba taipingensis*): mitogenome characterization and phylogenetic implications. *Zookeys* 2015;181-195.
 24. Yang H, Xia J, Zhang JE, Yang J, Zhao H, Wang Q, et al. Characterization of the complete mitochondrial genome sequences of three croakers (Perciformes, Sciaenidae) and novel insights into the phylogenetics. *Int J Mol Sci* 2018;19:3646.
 25. Boore JL. Animal mitochondrial genomes. *Nucleic Acids Res* 1999;27:1767-1780.