

# Predictive value of single nucleotide polymorphisms in *XRCC1* for radiation-induced normal tissue toxicity

Jing Zhao<sup>1,\*</sup>  
Zheng Zhi<sup>2,\*</sup>  
Ming Zhang<sup>1</sup>  
Qingxia Li<sup>1</sup>  
Jing Li<sup>3</sup>  
Xiao Wang<sup>4</sup>  
Chunling Ma<sup>1</sup>

<sup>1</sup>Department of Oncology, Hebei General Hospital, Shijiazhuang, Hebei 050051, China; <sup>2</sup>Department of Basic Medicine, Hebei University of Chinese Medicine, Shijiazhuang, Hebei 050200, China; <sup>3</sup>Department of Clinical laboratory, Hebei General Hospital, Shijiazhuang, Hebei 050051, China; <sup>4</sup>Department of Plastic Surgery, Hebei General Hospital, Shijiazhuang, Hebei 050051, China

\*These authors contributed equally to this work

**Purpose:** X-Ray Repair Cross Complementing 1 (*XRCC1*) functioning in the base excision repair pathway plays an important role in the repair of *DNA* single-strand breaks caused by ionizing radiation. The relationship between *XRCC1* polymorphisms and the risk of radiation-induced side effects on normal tissues remains controversial. Therefore, we performed a comprehensive meta-analysis to elucidate these associations.

**Materials and methods:** A systematic literature search was carried out in PubMed, Medline (Ovid), Embase, Web of Science, Cochrane database, and the references of relevant studies. The pooled odds ratios (ORs) with corresponding 95% confidence intervals (CIs) were calculated to evaluate the strength of the association.

**Results:** A total of 40 studies including 6,682 patients were eventually identified in this meta-analysis. Pooled results suggested that rs25487 Arg399Gln polymorphism significantly increased the risk of acute radiation-induced side effects (OR=1.29, 95% CI: 1.10–1.52,  $P=0.002$ ), especially acute mucositis (OR=1.91, 95% CI: 1.17–3.11,  $P=0.01$ ) and acute gastrointestinal and genitourinary toxicity (OR=1.49, 95% CI: 1.04–2.11,  $P=0.03$ ). Furthermore, patients who received head and neck irradiation with rs25487 Arg399Gln polymorphism were more likely to experience radiotherapy (RT)-induced side effects (OR=1.46, 95% CI: 1.12–1.90,  $P=0.005$ ). However, no statistically significant correlations were identified between rs25487 polymorphism and any late side effects and other irradiation areas. Likewise, no significant associations were detected between rs25489, rs1799782, or rs3213245 polymorphism and RT-induced toxicity.

**Conclusion:** Our meta-analysis demonstrated that *XRCC1* rs25487 Arg399Gln polymorphism had a significant predictive value and might predict a risk of severely acute RT-induced adverse effects, especially in acute mucositis and acute gastrointestinal and genitourinary toxicity, or in patients with head and neck irradiation. However, large-scale and well-designed studies are required to further evaluate the predictive value of *XRCC1* variations on radiation-induced side effects in order to identify radiosensitive patients and predict radiotoxicity.

**Keywords:** *XRCC1*, polymorphism, radiotherapy, side effect

## Introduction

Radiotherapy (RT) is a common and indispensable method in cancer treatment, which may result in a spectrum of normal tissue side effects.<sup>1</sup> Although improvements in precise RT techniques such as three-dimensional conformal radiotherapy and intensity-modulated radiotherapy have increased the possibility of dose escalation in tumor targets,<sup>2</sup> the implementation of radiation dose is still limited by the tolerance of normal tissues in and adjacent to the irradiation field.<sup>3</sup> However, patients exhibit substantially different degrees of normal tissue toxicity even with the same treatment

Correspondence: Jing Zhao  
Department of Oncology, Hebei General Hospital, Shijiazhuang, Hebei 050051, China  
Email zzzjmail@163.com

regimen, varying from mild to severe and occasionally lethal. Acute adverse effects may lead to unanticipated RT breaks and then remarkably affect adequate treatment delivery,<sup>4,5</sup> and late adverse effects markedly influence patients' quality of life.<sup>6</sup> It is important to predict a predisposition of severe RT-induced adverse effects in normal tissues for making personal and optimized treatment decision, particularly in those with "high–intermediate risk".

The severity of RT-induced complication is associated with many factors including irradiated dose, volume of normal tissues, fractionation schedule, combined with chemotherapy, as shown by Stone et al,<sup>7</sup> but they cannot fully explain patient-to-patient differences. Recent studies indicate that genetic component may contribute to the clinical radiosensitivity and radiation adverse effects.<sup>8–10</sup> *DNA* is considered to be the main target of RT, which causes cell death by inducing base damage, single-strand breaks (SSBs), and double-strand breaks.<sup>11</sup> So, inter-individual differences in *DNA* repair capacity may determine varying degrees of the normal tissue response. Extensive researches have been conducted in order to identify some genetic markers such as single nucleotide polymorphisms (SNPs) as predictive factors for the risk of radiation-induced normal tissue toxicity.<sup>10</sup> SNPs in *DNA* damage and repair genes may alter the amino acid composition of encoded proteins, which play a role in individual's radiation response and capacity of *DNA* damage repair. The protein encoded by X-Ray Repair Cross Complementing 1 (*XRCC1*) gene, which functions in the base excision repair (BER) pathway, involves in the efficient repair of *DNA* SSBs caused by exposure to ionizing radiation.<sup>12</sup> The *XRCC1* gene is mapped at human chromosome 19q13.2–13.3. The most common variants of *XRCC1* gene are rs25487 Arg399Gln in exon 10, rs25489 Arg280His in exon 9, and rs1799782 Arg194Trp in exon 6.<sup>13–15</sup>

Although several studies have investigated the association of *XRCC1* polymorphisms with clinically observed normal tissue adverse effects, the results are not consistent. It is not sufficient to form a reliable conclusion and consequently limit their clinical applicability as biomarkers. So, we performed a systematic review to investigate these associations. This is, to our knowledge, the first comprehensive meta-analysis of genetics studies on the association between *XRCC1* polymorphisms and radiation-related adverse effects.

## Materials and methods

### Search strategy

A systematic literature search in PubMed, Medline (Ovid), Cochrane, Embase, Web of Science database, and the

references of relevant articles was carried out to identify studies involving *XRCC1* polymorphisms and the risk of radiation-related normal tissue adverse effects (last search was updated on June 1, 2017). The search terms used were as follows: "*XRCC1* or X-Ray Repair Cross Complementing 1" in combination with "SNP or polymorphism or variant or variation or mutation or haplotype" and "radiotherapy or radiation or irradiation" and "side effect or adverse effect or complication or injury or toxicity or reaction or response or radiotoxicity or radiosensitivity or morbidity or normal tissue". All the search terms were restricted to studies in human subjects and in English language.

### Inclusion criteria

Studies included in the current meta-analysis met the following inclusion criteria: 1) evaluation of the association between *XRCC1* SNPs and radiation-induced normal tissue adverse effects; 2) the design has to be a cohort study or case control study; 3) sufficient published data (genotype distributions of each groups) to estimate an odds ratio (OR) with 95% CI.

### Exclusion criteria

Studies were excluded if one of the following existed: 1) data of genotype frequencies of each group were not reported and 2) case reports, reviews, editorials, and repeat studies. If there were more than one study published by the same authors based on the same populations, the one providing the most comprehensive information was included.

### Data extraction

Two investigators collected the data independently in duplicate according to the inclusion criteria listed above using a standardized data extraction form. The following items were extracted from each study: first author, publication date, original country, ethnicity, cancer type, subtype of SNP in *XRCC1*, normal tissue toxicity, sample size, treatment, type of study, genotyping method, genotype number, and total number in cases and controls.

### Statistical analysis

ORs and 95% CIs were used to assess the strength of association between genetic polymorphisms and the risk of RT-induced adverse effects. The pooled OR was calculated by a fixed-effects model or a random-effects model according to the heterogeneity. Heterogeneity among eligible studies was measured by  $\chi^2$ -based *Q*-test and *I*<sup>2</sup> statistical test.<sup>16</sup> If *Q*-test  $P < 0.1$  and *I*<sup>2</sup>-value  $\geq 50\%$ ,<sup>16</sup> the heterogeneity was considered statistically significant, and the assumption

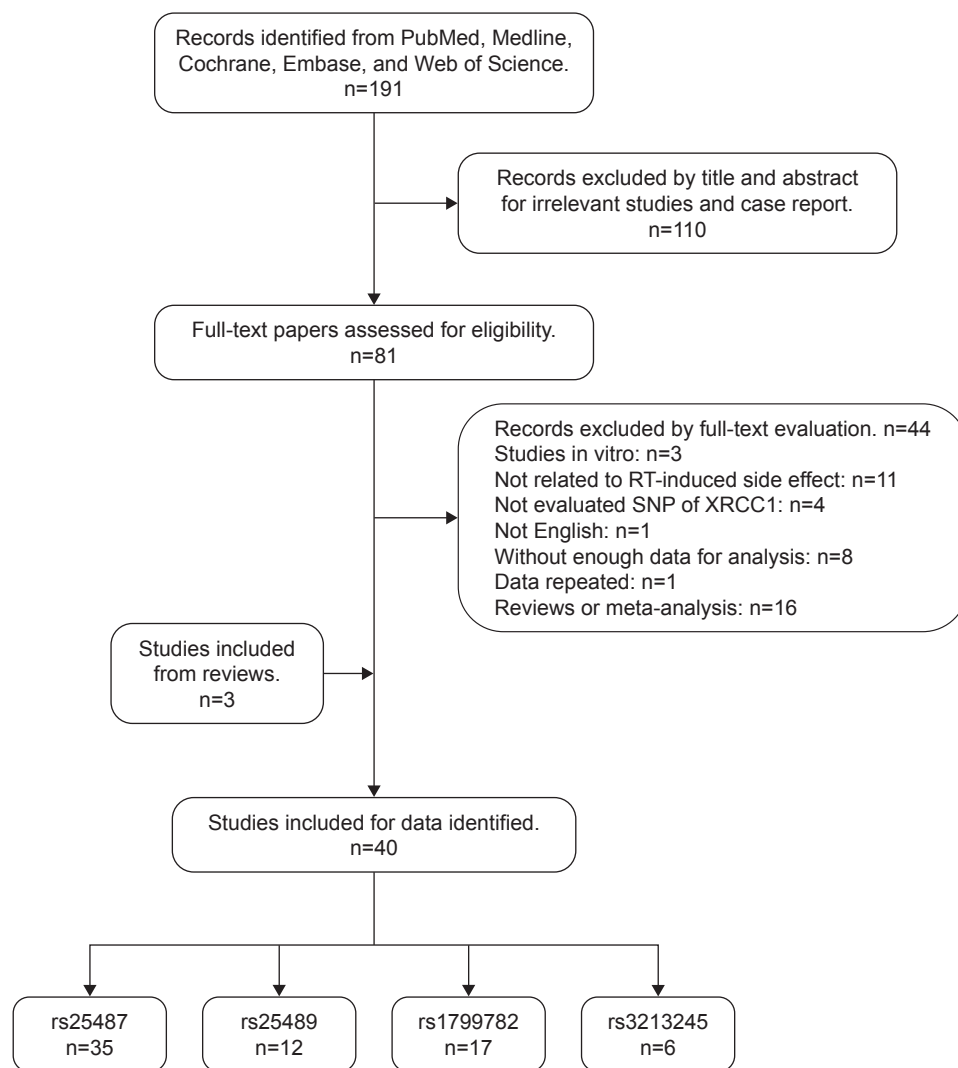
of homogeneity was deemed invalid and the pooled OR was calculated by random-effects model after exploring the cause of heterogeneity. Otherwise, the fixed-effects model was used. Findings of our meta-analysis are shown in forest plots. The two-tailed  $P < 0.05$  was considered statistically significant. To evaluate the tolerance of different normal tissues and the occurrence time of side effects, subgroup analysis was conducted by early or late adverse effect, special types of side effects, and irradiation area. Sensitivity analysis was performed to confirm the stability and reliability of the pooled results by excluding each study individually and recalculating the pooled ORs and 95% CIs. If the number of included studies were  $> 10$ , the possible publication bias and the degree of asymmetry were examined by Begg's funnel plot and Egger's test.<sup>17,18</sup> If publication bias existed, the "trim and fill" method<sup>19</sup> was used to estimate the number of

missing studies and to adjust the pooled result. Statistical analysis was performed using Revman 5.3 and STATA 14.0 software.

## Results

### Study characteristics

A total of 40 studies including 6,682 patients were eventually identified in this meta-analysis for further analysis (Figure 1). The baseline characteristics of each included study are listed in Table 1. These studies were published from 2003 to 2017, and the sample size ranged from 34 to 579. Most of these studies included mainly Caucasian patients, and nine studies included Asian patients, of which five studies are on Chinese.<sup>15,20–23</sup> The cancer categories included head and neck cancer (8 studies),<sup>20,21,23–27</sup> breast cancer (18 studies),<sup>15,28–44</sup> prostate cancer (5 studies),<sup>14,45–48</sup> cervical endometrial



**Figure 1** Flow diagram of study search and screening for the meta-analysis.

**Abbreviations:** RT, radiotherapy; SNP, single nucleotide polymorphism.

Table 1 Baseline characteristics of the eligible studies

Author, year	Country	Ethnicity	Disease	SNP	Sample size (N)	Adverse effect	Assessment criteria	RT dose	CT involved	Study design	Genotyping method
Alsbeth et al, <sup>24</sup> 2010	Saudi Arabia	Caucasian	NPC	rs25487	60	Late: fibrosis	RTOG/EORTC $\geq$ G2	66–70 Gy	Yes	Case-control	PCR
Andreassen et al, <sup>29</sup> 2003	Denmark	Caucasian	Breast	rs25487	41	Late: fibrosis	LENT-SOMA $\geq$ G3	36.6–51.4 Gy	No	Cohort	PCR
Andreassen, <sup>63</sup> 2005	Denmark	Caucasian	Breast	rs25487	52	Late: breast appearance	Photographic $\geq$ G2	50 Gy/25f, 42.9 Gy/13f, 39 Gy/13f	NA	Case-control	PCR
Andreassen et al, <sup>30</sup> 2006	Denmark	Caucasian	Breast	rs25487, rs25489, rs1799782	120	Late: fibrosis	LENT-SOMA $\geq$ G3	41 Gy	Yes	Cohort	PCR
Azria et al, <sup>57</sup> 2008	France	Caucasian	Breast, HNC	rs25489	34	Late: fibrosis	RTOG/EORTC CTC v3.0 $\geq$ G3	NA	Yes	Case-control	PCR
Brem et al, <sup>31</sup> 2006	France	Caucasian	Breast	rs3213245	247	Acute and Late	EORTC	50 Gy, tumor bed boost 10 Gy	NA	Case-control	PCR-RFLP
Burri et al, <sup>14</sup> 2008	America	Mixed	Prostate	rs25487, rs25489, rs1799782	135	Late: rectal bleeding, urinary morbidity, erectile dysfunction	RTOG/EORTC $\geq$ G2	125f: 160 Gy 103 Pd: 124 Gy 103 Pd: 100 Gy+EBRT: 45 Gy	NA	Cohort	PCR
Changclaud et al, <sup>32</sup> 2005	Germany	Caucasian	Breast	rs25487, rs25489, rs1799782	446	Acute: skin reaction	CTCAE v2.0 $\geq$ G2c	Mean 54.0 $\pm$ 4.8 Gy (35.5–64.5 Gy)	No	Cohort	PCR-RFLP
Changclaud et al, <sup>32</sup> 2009	Germany	Caucasian	Breast	rs25487, rs25489, rs1799782, rs3213245	409	Late: telangiectasia	RTOG/EORTC LENT-SOMA $\geq$ G2	Mean 61.8 $\pm$ 4.10 Gy (51–71 Gy)	No	Cohort	PCR-RFLP
Cheuk et al, <sup>20</sup> 2014	Hong Kong	Asian	NPC	rs25487, rs1799782	120	Late: fibrosis	RTOG $\geq$ G1	66–76 Gy	Yes	Cohort	PCR-RFLP
Damaraju et al, <sup>45</sup> 2006	Canada	Mixed	Prostate	rs25489, rs1799782	83	Late: bladder or rectal toxicity	RTOG $\geq$ G2	Mean 77.1 Gy (68.3–82.1 Gy)	No	Cohort	PCR
De Ruyck et al, <sup>49</sup> 2005	Belgium	Caucasian	Cervical, endometria	rs25487, rs25489, rs1799782	62	Late	CTCAE v3.0 $\geq$ G2	EBRT: 45–66 Gy 192f: 15–35 Gy	Yes	Cohort	PCR-RFLP
De Ruyck et al, <sup>25</sup> 2013	Belgium	Caucasian	HNC	rs3213245	189	Acute: dysphagia	CTCAE v3.0 $\geq$ G3	66–70 Gy	Yes	Cohort	PCR-RFLP
Duldulao et al, <sup>52</sup> 2013	USA	Caucasian	Rectal	rs25487	132	Acute: gastrointestinal toxicity	CTCAE v3.0 $\geq$ G3	NA	Yes	Cohort	PCR, direct sanger sequencing
Falvo et al, <sup>42</sup> 2011	Italy	Caucasian	Breast	rs1799782	57	Acute: erythema	CTCAE v3.0 $\geq$ G1	21 Gy/f	Yes	Cohort	PCR
Falvo et al, <sup>34</sup> 2012	Italy	Caucasian	Breast	rs25487	57	Late: fibrosis, fat necrosis	CTCAE v3.0 $\geq$ G2	21 Gy/f	Yes	Cohort	PCR

Giotopoulos et al. <sup>35</sup> 2007	UK	Mixed	Breast	rs25487	167	Late: telangiectasia	RTOG	40–50 Gy, tumor bed boost of 15 Gy/5f	Yes	Cohort	PCR-RFLP
Ishikawa et al. <sup>50</sup> 2011	Japan	Asian	Cervical	rs25487	208	Acute: diarrhea	CTCAE v2.0 ≥G2	EBRT 50.6 Gy	Yes	Cohort	PCR
Langsenlehner et al. <sup>46</sup> 2011	Austria	Caucasian	Prostate	rs25487, rs25489, rs1799782	579	Late: bladder or rectal toxicity	RTOG/EORTC ≥G2	Brachytherapy 24.0 Gy 66–70.4 Gy	No	Cohort	PCR
Li et al. <sup>21</sup> 2013	China	Asian	NPC	rs25487, rs1799782	114	Acute: mucositis, dermatitis	CTCAE v3.0 ≥G3	50–70 Gy	Yes	Cohort	PCR-RFLP
Mangoni et al. <sup>43</sup> 2011	Italy	Caucasian	Breast	rs25487, rs1799782	87	Acute: skin reaction	CTCAE v2.0 ≥G2c	50 Gy/25f, 44 Gy/16f	Yes	Cohort	PCR
Moullan et al. <sup>36</sup> 2003	France	Caucasian	Breast	rs25487, rs25489, rs1799782	254	Acute and Late	EORTC	50 Gy, tumor bed boost 10 Gy	NA	Cohort	PCR
Mumbrekar et al. <sup>37</sup> 2017	India	Asian	Breast	rs25487	126	Acute: skin reaction	RTOG ≥G2	50 Gy, tumor bed boost 10 Gy for 26 patients	Yes	Cohort	PCR
Popanda et al. <sup>47</sup> 2009	Germany	Caucasian	Prostate	rs25487, rs25489, rs1799782	405	Acute: proctitis cystitis	CTCAE v2.0 ≥G3	61–72 Gy	No	Cohort	Sequence-specific hybridization probes
Pratesi et al. <sup>26</sup> 2011	Italy	Caucasian	HNC	rs25487	101	Acute: mucositis, skin erythema	CTCAE v3.0 ≥G2	Mean 62 Gy (54–70 Gy)	Yes	Case-control	PCR-RFLP
Raabe et al. <sup>44</sup> 2012	Germany	Caucasian	Breast	rs25487	83	Acute: erythema	RTOG ≥G2	50–50.4 Gy	NA	Cohort	PCR-RFLP, MALDI-TOF
Sakano et al. <sup>51</sup> 2010	Japan	Asian	Bladder	rs25487	95	Acute: gastrointestinal toxicity	CTCAE v3.0 ≥G2	Median 48.6 Gy (30.0–60.4 Gy)	Yes	Cohort	PCR-RFLP
Smith et al. <sup>53</sup> 2017	America	Mixed	Rectal	rs25487	165	Acute: gastrointestinal and genitourinary toxicity (diarrhea, proctitis, cystitis)	CTCAE v3.0 ≥G3	Median 50.4 Gy	Yes	Cohort	PCR, MALDI-TOF
Suga et al. <sup>38</sup> 2007	Japan	Asian	Breast	rs25487	399	Acute: skin reaction	CTCAE v2.0 ≥G2	46–60 Gy	Yes	Cohort	PCR
Terrazzino et al. <sup>39</sup> 2012	Italy	Caucasian	Breast	rs25487, rs1799782, rs3213245	286	Acute: skin reaction	RTOG ≥G2	50–50.4 Gy, tumor bed boost 9–16 Gy	Yes	Cohort	PCR-RFLP
Terrazzino et al. <sup>40</sup> 2012	Italy	Caucasian	Breast	rs25487, rs1799782	237	Late: fibrosis	LENT-SOMA ≥G2	50–50.4 Gy, tumor bed boost 9–16 Gy	Yes	Cohort	PCR-RFLP
Tucker et al. <sup>34</sup> 2013	USA	Caucasian	NSCLC	rs25487	141	Late: radiation pneumonitis	CTCAE v3.0 ≥G3	Median 63 Gy (50.4–72 Gy)	Yes	Cohort	PCR-RFLP
Usmani et al. <sup>48</sup> 2014	Canada	Caucasian	Prostate	rs25487	217	Late: urinary toxicity	RTOG ≥G2	1251 ≥145 Gy	No	Cohort	PCR

(Continued)

Table 1 (Continued)

Author, year	Country	Ethnicity	Disease	SNP	Sample size (N)	Adverse effect	Assessment criteria	RT dose	CT involved	Study design	Genotyping method
Venkatesh et al, <sup>27</sup> 2014	India	Caucasian	HNC	rs25487, rs25489, rs1799782, rs3213245	183	Acute: mucositis, skin reaction	RTOG $\geq$ G3	60–70 Gy	Yes	Cohort	PCR-RFLP
Yin et al, <sup>35</sup> 2011	USA	Mixed	NSCLC	rs25487	165	Late: radiation pneumonitis	CTCAE v3.0 $\geq$ G2	Median 63 Gy (50.4–84.0 Gy)	Yes	Cohort	PCR-RFLP
Yoon et al, <sup>36</sup> 2011	USA	Mixed	Esophageal adenocarcinoma	rs25487	60	Acute: dysphagia	CTCAE v2.0 $\geq$ G3	45 Gy	Yes	Cohort	PCR, MALDI-TOF
Xian et al, <sup>22</sup> 2015	China	Asian	Esophageal squamous cell carcinoma	rs25487	118	Acute: esophagitis	CTCAE $\geq$ G3	Median 60 Gy (45–66 Gy)	Yes	Cohort	PCR
Zhai et al, <sup>23</sup> 2016	China	Asian	NPC	rs25487	60	Acute and Late: skin, mucosa, salivary gland	RTOG $\geq$ G2	66–76 Gy	Yes	Cohort	PCR-LDR
Zhou et al, <sup>15</sup> 2010	China	Asian	Breast	rs25487, rs25489, rs1799782, rs3213245	119	Acute: skin reaction	CTCAE v3.0 $\geq$ G2	46–54 Gy	No	Cohort	PCR-RFLP
Zschenker et al, <sup>41</sup> 2010	Germany	Caucasian	Breast	rs25487	69	Late: fibrosis	LENT-SOMA $\geq$ G2	54–55 Gy	Yes	Cohort	PCR-RFLP, MALDI-TOF

**Abbreviations:** CT, chemotherapy; CTC, Common Toxicity Criteria; CTCAE, Common Terminology Criteria for Adverse Events; EBRT, external beam radiation therapy; EORTC, European Organization for Research and Treatment of Cancer; HNC, head and neck cancer; LDR, ligase detection reaction; MALDI-TOF, matrix-assisted laser desorption/ionization time of flight; LENT-SOMA, Late Effects of Normal Tissue-Subjective Objective Management Analytical; NA, not available; NPC, nasopharyngeal carcinoma; NSCLC, non-small-cell lung cancer; PCR, polymerase chain reaction; RFLP, restriction fragment length polymorphism; RT, radiotherapy; RTOG, Radiation Therapy Oncology Group; SNP, single nucleotide polymorphism.



cancer (2 studies),<sup>49,50</sup> bladder cancer (1 study),<sup>51</sup> rectal cancer (2 studies),<sup>52,53</sup> non-small-cell lung cancer (NSCLC; 2 studies),<sup>54,55</sup> esophageal cancer (2 studies),<sup>22,56</sup> and one mixed cancers (mainly breast cancer and head and neck cancer).<sup>57</sup> Four subtypes of SNPs in *XRCC1* were analyzed in this meta-analysis. Thirty-six studies were identified for rs25487, 12 studies for rs25489, 17 studies for rs1799782, and 6 studies for rs3213245. Subgroup analyses of radiation-induced adverse effects were performed on acute or late side effects, special types of side effects, and irradiation area. The genotype distributions analyzed in each study were in Hardy–Weinberg equilibrium with  $P > 0.05$ . All the included eligible reports were written in English language.

## Meta-analysis results

### *XRCC1* rs25487 polymorphism

Overall, *XRCC1* rs25487 Arg399Gln G>A polymorphism was significantly associated with acute normal tissue injury after RT. Specifically, rs25487 “Gln” allele increased the risk of acute radiation-induced adverse effects (for GA+AA versus GG, OR=1.29, 95% CI: 1.10–1.52,  $P=0.002$ ; Figure 2).

### Subgroup analysis by specific adverse effect

Because most studies investigated several different adverse effects, subgroup analysis was conducted by specific adverse effect. The results indicated that rs25487 Arg399Gln “Gln” allele carriers significantly increased acute mucositis (OR=1.91, 95% CI: 1.17–3.11,  $P=0.01$ ) and acute gastrointestinal and genitourinary toxicity (OR=1.49, 95% CI: 1.04–2.11,  $P=0.03$ ; Figure 3). No statistically significant associations were identified between rs25487 polymorphism and any late radiation-induced adverse effects (Figure 4).

### Subgroup analysis by radiotherapy area

Subgroup analysis was conducted by different irradiation area irrespective of the type of adverse effect. The rs25487 Arg399Gln polymorphism was significantly associated with a higher risk of adverse effects induced by head and neck irradiation (OR=1.46, 95% CI: 1.12–1.90,  $P=0.005$ ), whereas the correlation was not significant for breast or pelvic irradiation (breast, OR=1.13, 95% CI: 0.95–1.33,  $P=0.18$ ; pelvic, OR=1.20, 95% CI: 0.94–1.54,  $P=0.14$ , respectively; Figure 5).

### *XRCC1* rs25489, rs1799782, and rs3213245 polymorphisms

Although no statistically significant associations were identified, the rs25489 Arg280His polymorphism seemed to

indicate a protective effect against radiotoxicity (OR=0.78, 95% CI: 0.58–1.06,  $P=0.11$ ), especially in acute adverse effects (OR=0.66, 95% CI: 0.38–1.14,  $P=0.14$ , Figure 6) or in breast irradiation area (OR=0.71, 95% CI: 0.47–1.06,  $P=0.10$ , Figure 7). No significant associations were detected between rs1799782 or rs3213245 polymorphism and RT-induced toxicity (Figures 8 and 9).

## Heterogeneity and sensitivity analyses

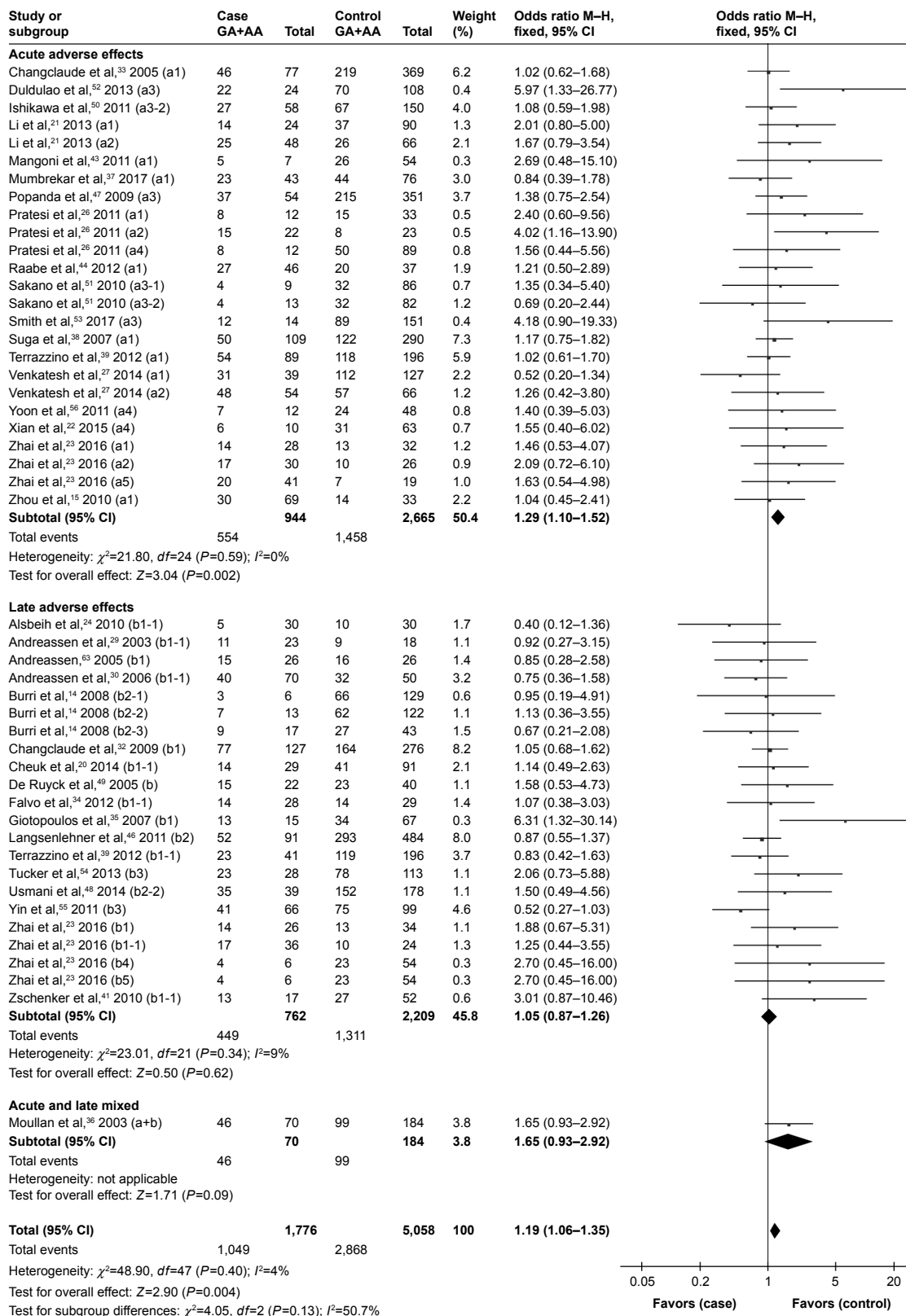
The heterogeneities between studies of most analyses were not significant except for three subgroup analyses, the evaluation on radiation pneumonitis of rs25487 ( $I^2=79%$ ,  $\chi^2 P=0.03$ ), late side effect ( $I^2=48%$ ,  $\chi^2 P=0.05$ ), and pelvic irradiation ( $I^2=55%$ ,  $\chi^2 P=0.04$ ) of rs25489. The pooled OR calculated by random-effects model of these subgroup analyses had no statistically significant associations, and the pooled results were stable in the sensitivity analysis.

## Publication bias

The distribution of all analyzed studies for rs25487 in Begg’s funnel plot was visually asymmetrical and the  $P$ -value of Egger’s test was significantly  $<0.05$ . However, we noticed that many included studies assessed several endpoints and different adverse effects, resulting in these studies being evaluated several times in Begg’s funnel plot, which led to an inaccurate result of the publication bias. So, in order to avoid “multiple testing problem”, we reevaluated the publication bias for each subgroup analysis if  $>10$  studies were included based on the results above in the form of one study emerged only one time. The  $P$ -value of Egger’s test of rs25487 for RT-induced acute skin toxicity was 0.245 (Figure 10), which indicates no publication bias. No publication bias was identified in other subgroup analysis of rs25487, and in rs25489, rs1799782, rs3213245 genetic models, and the  $P$ -values of Egger’s test were all  $>0.05$ , which suggested that there was no obvious risk of publication bias in the meta-analysis.

## Discussion

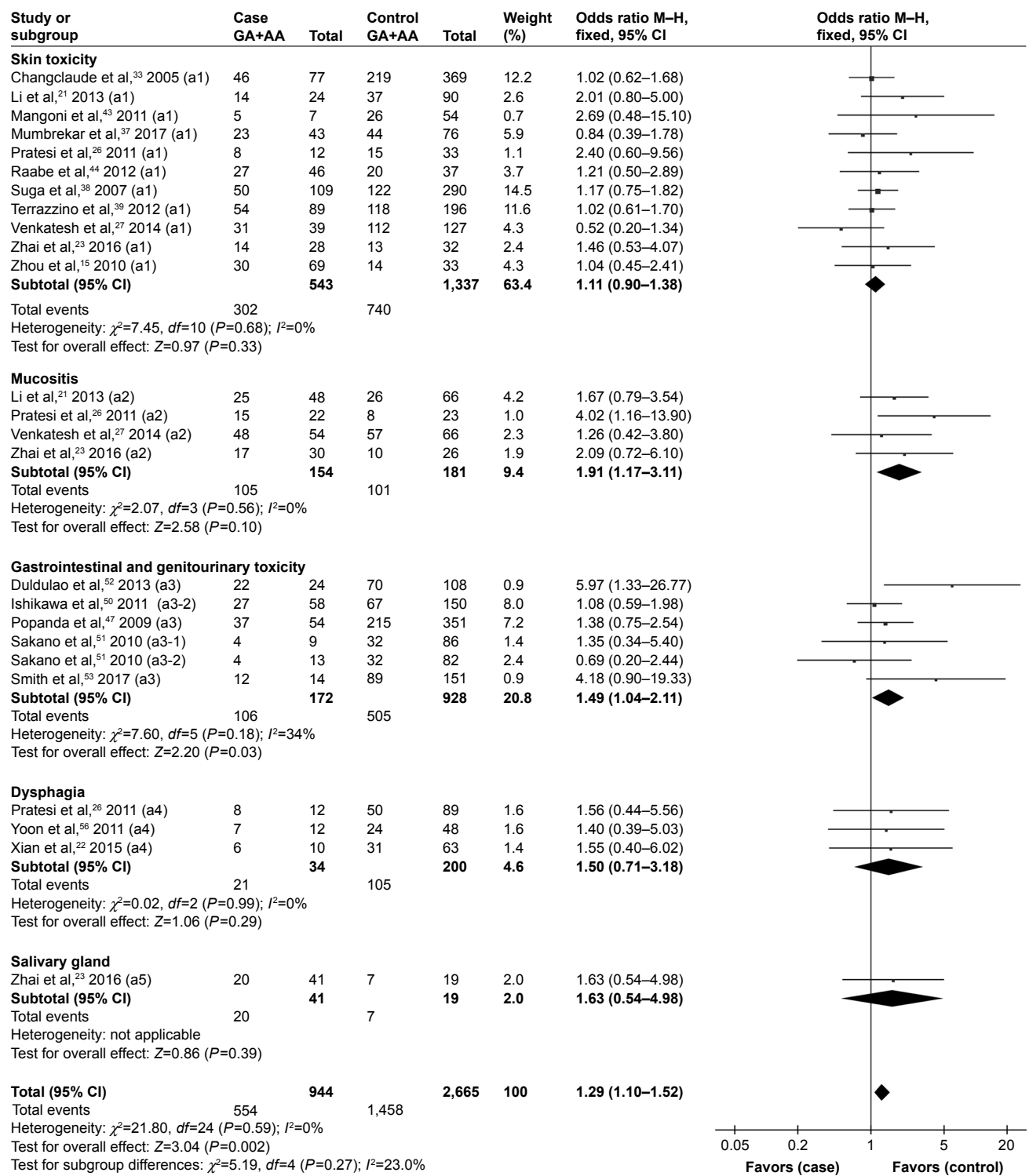
The protein encoded by *XRCC1* gene functions in the efficient repair of base damage and DNA SSBs formed by ionizing radiation and alkylating agents. This protein interacts with DNA ligase III, polymerase-beta, and poly (ADP-ribose) polymerase to participate in the BER pathway.<sup>58</sup> Polymorphisms in this gene are associated with varying radiosensitivity of cancer patients. Association studies on *XRCC1* genetic variations and the risk of RT-induced normal tissue injuries can help us to identify markers predicting occurrence of side effects, but previous studies reported inconsistent findings.



**Figure 2** Forest plot for the association between rs25487 and radiation-induced adverse effects.

**Notes:** A fixed-effects model was used. The square with the corresponding horizontal line represents the OR and 95% CI of each study. The area of the square reflects the weight of the study. The diamond represents the pooled OR and 95% CI. The “case” represents patients with severe radiation-induced side effects and “control” represents patients without or with light radiation-induced side effects. a, acute side effects; a1, skin reactions (dermatitis and erythema); a2, mucositis; a3, gastrointestinal and genitourinary toxicity; a3-1, gastrointestinal reactions (nausea and vomiting); a3-2, gastrointestinal reactions (diarrhea, rectal pain, obstipation, bleeding and proctitis); a4, dysphagia; a5, salivary gland; b, late side effects; b1, skin and subcutaneous reactions (subcutaneous fibrosis, skin telangiectasia and breast appearance); b1-1, subcutaneous fibrosis; b2, gastrointestinal and genitourinary toxicity; b2-1, gastrointestinal toxicity; b2-2, genitourinary toxicity; b2-3, erectile dysfunction; b3, radiation pneumonitis; b4, mucous membrane; b5, salivary gland. **Abbreviations:** M–H, Mantel–Haenszel; OR, odds ratio.





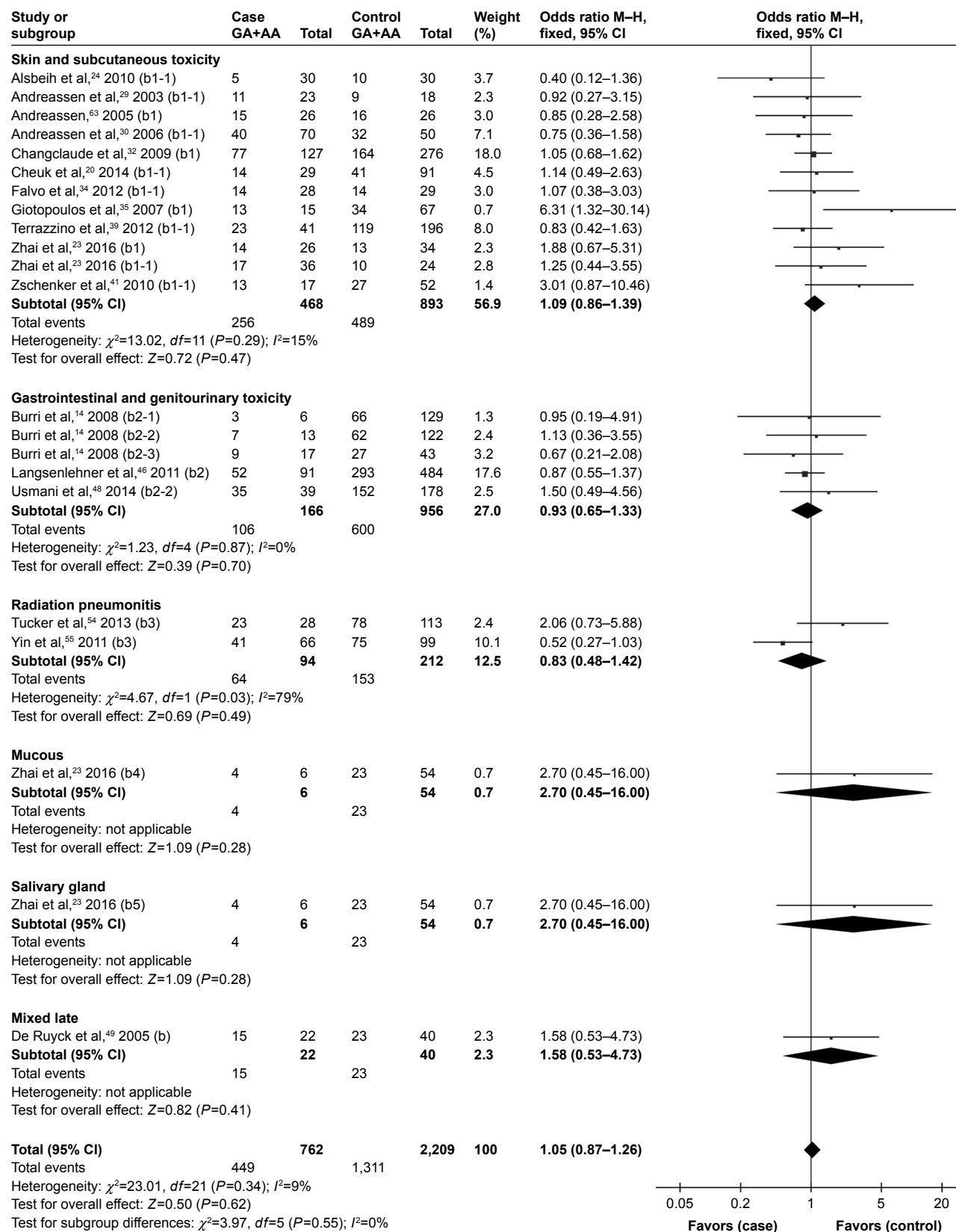
**Figure 3** Forest plot for the association between rs25487 and radiation-induced acute adverse effects by specific side effect.

**Notes:** The “case” represents patients with severe radiation-induced side effects and “control” represents patients without or with light radiation-induced side effects. a, acute side effects; a1, skin reactions (dermatitis and erythema); a2, mucositis; a3, gastrointestinal and genitourinary toxicity; a3-1, gastrointestinal reactions (nausea and vomiting); a3-2, gastrointestinal reactions (diarrhea, rectal pain, obstipation, bleeding and proctitis); a4, dysphagia; a5, salivary gland.

**Abbreviation:** M-H, Mantel-Haenszel.

The present meta-analysis was performed to comprehensively evaluate the influence of *XRCC1* polymorphisms on the development of radiation-induced normal tissue adverse effects. Four common SNPs of *XRCC1* were analyzed in

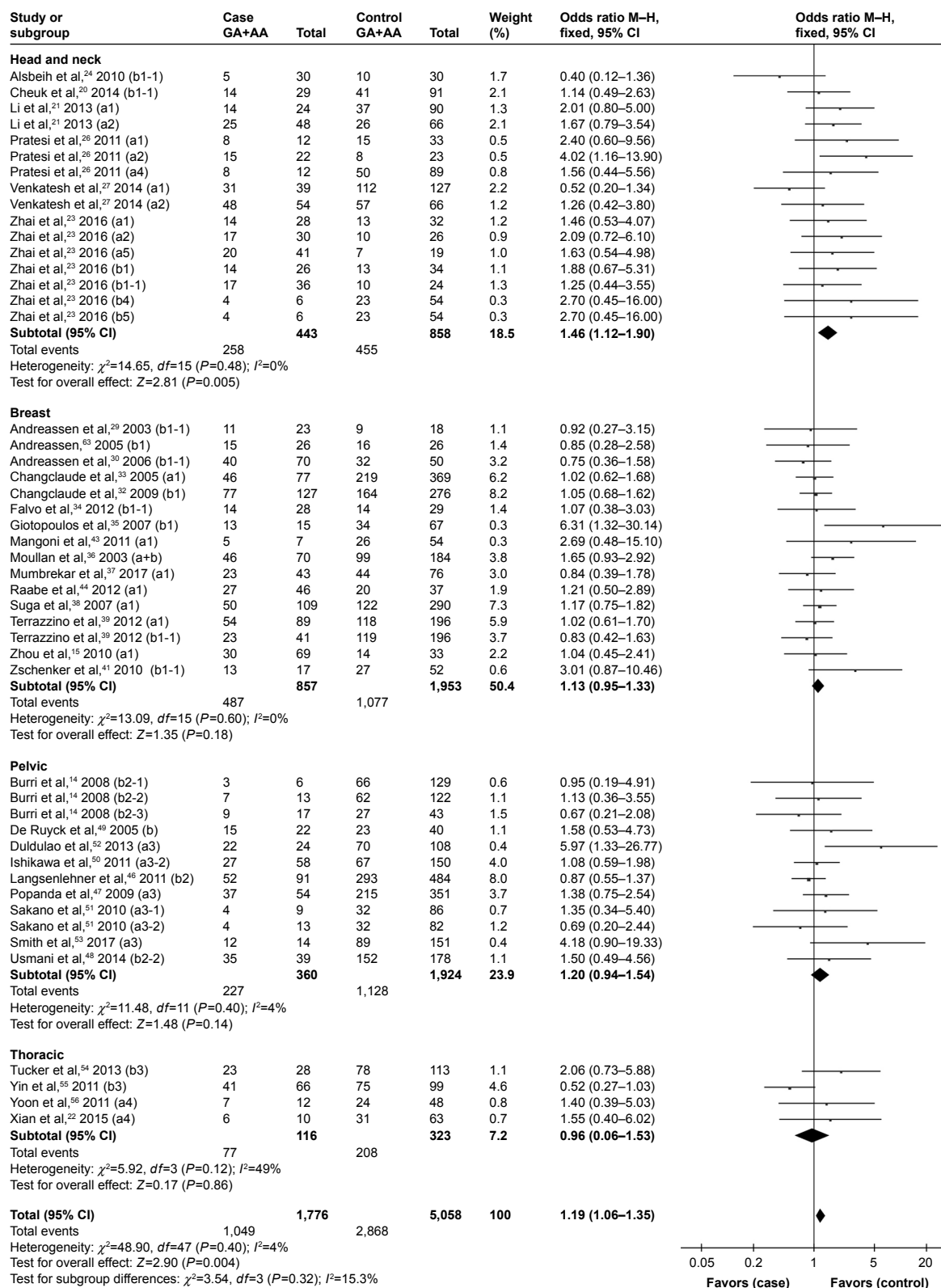
our meta-analysis: *XRCC1* rs25487 (Arg399Gln, G>A), *XRCC1* rs25489 (Arg280His, G>A), *XRCC1* rs1799782 (Arg194Trp, C>T), and *XRCC1* rs3213245 (–77 T>C). Among these, rs25487 (Arg399Gln, G>A) was the most



**Figure 4** Forest plot for the association between rs25487 and radiation-induced late adverse effects by specific side effect.

**Notes:** The “case” represents patients with severe radiation-induced side effects and “control” represents patients without or with light radiation-induced side effects. b, late side effects; b1, skin and subcutaneous reactions (subcutaneous fibrosis, skin telangiectasia and breast appearance); b1-1, subcutaneous fibrosis; b2, gastrointestinal and genitourinary toxicity; b2-1, gastrointestinal toxicity; b2-2, genitourinary toxicity; b2-3, erectile dysfunction; b3, radiation pneumonitis; b4, mucous membrane; b5, salivary gland.

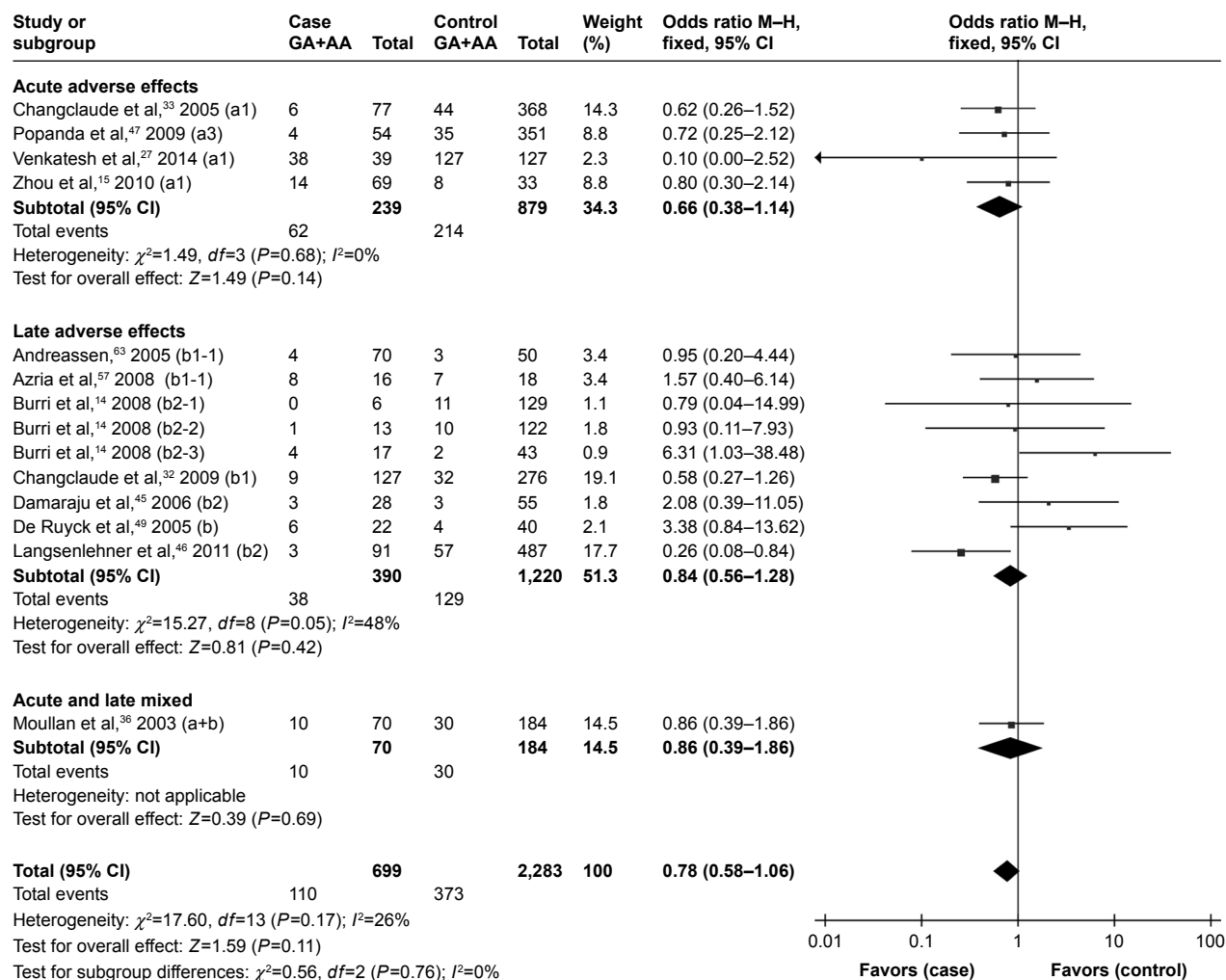
**Abbreviation:** M–H, Mantel–Haenszel.



**Figure 5** Forest plot for the association between rs25487 and radiation-induced adverse effects by irradiation area.

**Notes:** The “case” represents patients with severe radiation-induced side effects and “control” represents patients without or with light radiation-induced side effects. a, acute side effects; a1, skin reactions (dermatitis and erythema); a2, mucositis; a3, gastrointestinal and genitourinary toxicity; a3-1, gastrointestinal reactions (nausea and vomiting); a3-2, gastrointestinal reactions (diarrhea, rectal pain, obstipation, bleeding and proctitis); a4, dysphagia; a5, salivary gland; b, late side effects; b1, skin and subcutaneous reactions (subcutaneous fibrosis, skin telangiectasia and breast appearance); b1-1, subcutaneous fibrosis; b2, gastrointestinal and genitourinary toxicity; b2-1, gastrointestinal toxicity; b2-2, genitourinary toxicity; b2-3, erectile dysfunction; b3, radiation pneumonitis; b4, mucous membrane; b5, salivary gland.

**Abbreviation:** M–H, Mantel–Haenszel.



**Figure 6** Forest plot for the association between rs25489 and radiation-induced adverse effects.

**Notes:** The "case" represents patients with severe radiation-induced side effects and "control" represents patients without or with light radiation-induced side effects. a, acute side effects; a1, skin reactions (dermatitis and erythema); a3, gastrointestinal and genitourinary toxicity; b, late side effects; b1, skin and subcutaneous reactions (subcutaneous fibrosis and skin telangiectasia); b1-1, subcutaneous fibrosis; b2, gastrointestinal and genitourinary toxicity; b2-1, gastrointestinal toxicity; b2-2, genitourinary toxicity; b2-3, erectile dysfunction.

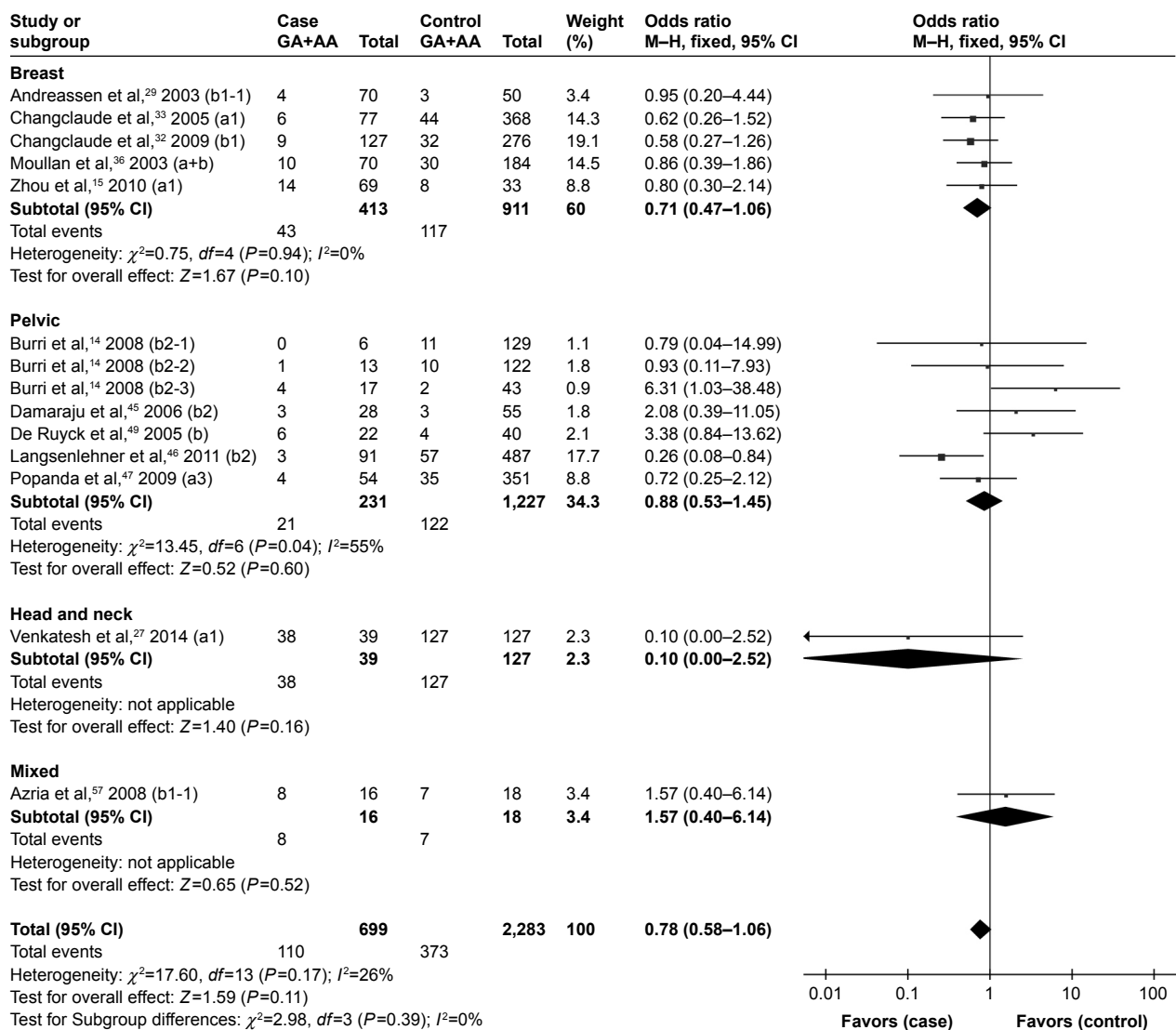
**Abbreviation:** M-H, Mantel-Haenszel.

commonly studied polymorphism of *XRCC1* in previous researches. Due to different molecular mechanisms of acute and late radiation effects, we analyzed the acute and late side effects separately.

To date, several systematic reviews have been published on genetic variants and normal tissue toxicities induced by radiation, most of which involved *XRCC1* polymorphism.<sup>47,59–63</sup> However, due to obvious heterogeneity, it is difficult to draw any definite conclusion. So far, four meta-analyses have been published on *XRCC1* polymorphism and the risk of normal tissue injury after RT, three of which were performed only in breast cancer and one in prostate cancer patients; besides, only one to three polymorphisms have been analyzed in each paper.<sup>13,46,64,65</sup> A positive association between rs25487 Arg399Gln polymorphism and acute side effect in breast

cancer patients,<sup>64,65</sup> and a negative association between rs25489 Arg280His variant and late side effect in breast cancer and prostate cancer patients<sup>46,65</sup> have been reported in these meta-analyses.

In our meta-analysis, more specific evidences were provided. For rs25487 Arg399Gln polymorphism, significant associations with seriously acute adverse effects were revealed, especially acute mucositis and acute gastrointestinal and genitourinary toxicity. Subgroup analysis according to irradiated area revealed that rs25487 Arg399Gln significantly correlated with an elevated risk of side effects induced by head and neck irradiation. It indicates that patients with rs25487 variant who receive RT are more likely to experience acute adverse effects, especially in head and neck irradiation. No significant correlation with any late side effects,



**Figure 7** Forest plot for the association between rs25489 and radiation-induced adverse effects by irradiation area.

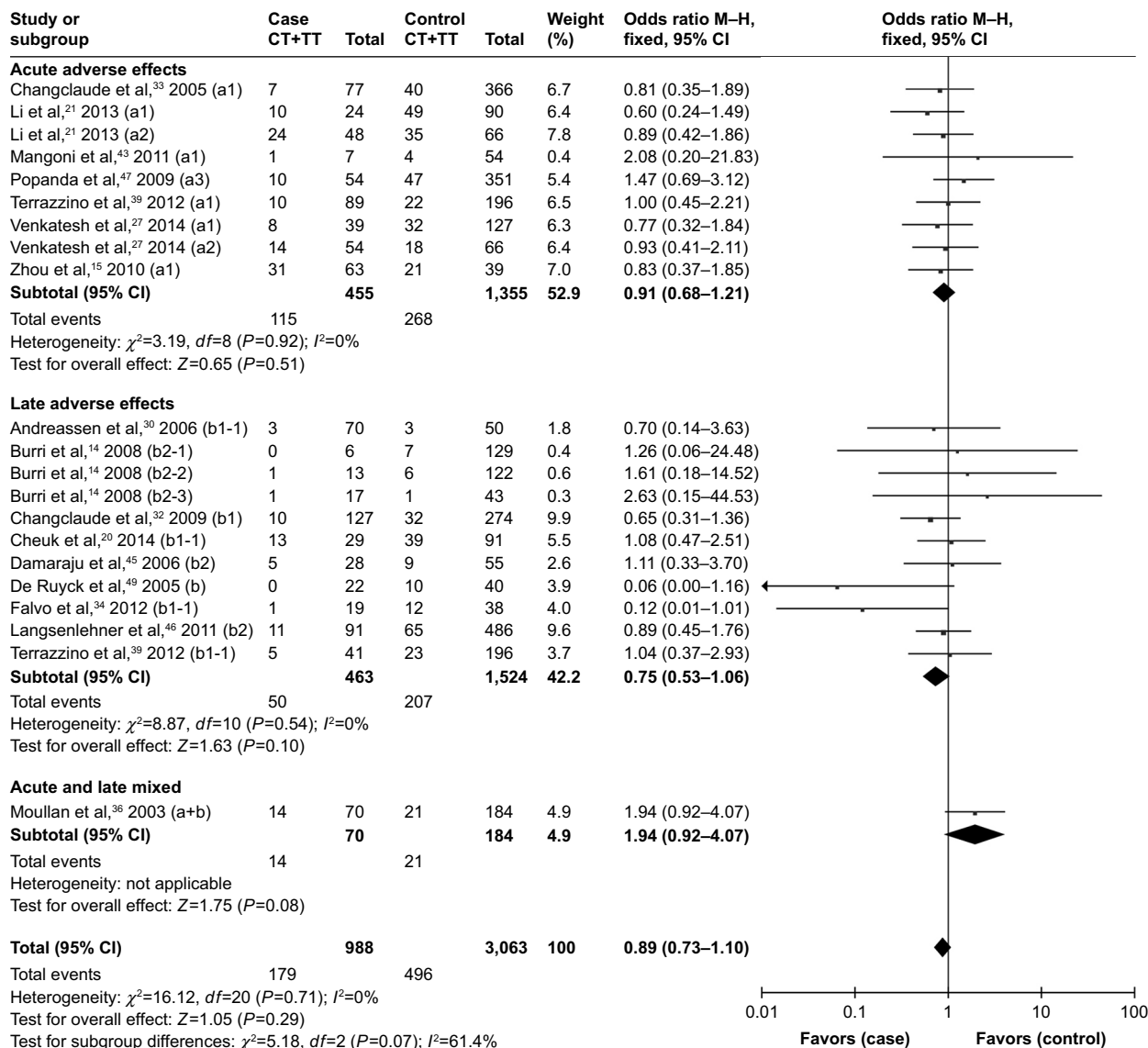
**Notes:** The “case” represents patients with severe radiation-induced side effects and “control” represents patients without or with light radiation-induced side effects. a, acute side effects; a1, skin reactions (dermatitis and erythema); a3, gastrointestinal and genitourinary toxicity; b, late side effects; b1, skin and subcutaneous reactions (subcutaneous fibrosis and skin telangiectasia); b1-1, subcutaneous fibrosis; b2, gastrointestinal and genitourinary toxicity; b2-1, gastrointestinal toxicity; b2-2, genitourinary toxicity; b2-3, erectile dysfunction.

**Abbreviation:** M–H, Mantel–Haenszel.

or with breast, pelvic, or thoracic irradiation, was observed in rs25487 polymorphism. For rs25489 Arg280His variant, inconsistent with previous results reported, no statistically significant associations were identified, but rs25489 seemed to indicate a protective effect against radiotoxicity, especially in acute adverse effects or in breast irradiation. *XRCC1* SNPs appear to be more likely to correlate with acute RT-induced side effects, but the reason is unclear. Radiation causes *DNA* strand breaks in normal cells, most of the cells die and cannot renew in time leading to acute side effects, accompanied by responses of *DNA* damage repair. Late side effects refer to the cells unable to regenerate after exhausted by radiation and eventually lead to fibrosis instead. The *XRCC1* protein

functions in the efficient repair of *DNA* SSBs; thus, we speculate that *XRCC1* may participate in the *DNA* damage repair mainly in the period of RT-induced acute reactions.

No significant associations were detected between rs1799782 or rs3213245 polymorphism and RT-induced toxicity in the overall or the subgroup analyses. However, Moullan et al<sup>36</sup> and Mangoni et al<sup>43</sup> indicated that the rs1799782194Trp variant was associated with an increased risk of RT-induced adverse response when analyzed in combination with the rs25487 399Gln variant in breast cancer patients. No definite conclusion can be made for rs25489, rs1799782, or rs3213245 polymorphisms, may be due to the relatively small number of identified studies.



**Figure 8** Forest plot for the association between rs1799782 and radiation-induced adverse effects.

**Notes:** The “case” represents patients with severe radiation-induced side effects and “control” represents patients without or with light radiation-induced side effects. a, acute side effects; a1, skin reactions (dermatitis and erythema); a2, mucositis; a3, gastrointestinal and genitourinary toxicity; b, late side effects; b1, skin and subcutaneous reactions (subcutaneous fibrosis and skin telangiectasia); b1-1, subcutaneous fibrosis; b2, gastrointestinal and genitourinary toxicity; b2-1, gastrointestinal toxicity; b2-2, genitourinary toxicity; b2-3, erectile dysfunction.

**Abbreviation:** M-H, Mantel–Haenszel.

Although a series of studies have been made to evaluate the association between SNPs and RT-induced adverse effects, no SNPs have been thoroughly identified to have the predictive power in clinical practice. Moreover, most studies assessed the individual effect of selected SNPs,<sup>59,61–63</sup> and the original researches available on combined effect of multiple SNPs are less and not enough to make a meta-analysis. Further studies are needed to elucidate the selection criteria and predictive effect for SNP combinations. In addition, genome-wide association study (GWAS) is more credible due to the comprehensive genetic coverage. Barnett et al<sup>66</sup> presented the largest GWAS in which 1217

breast cancer patients received adjuvant RT and 633 prostate cancer patients received radical RT. Quantile–quantile plot results provided evidence for the true association between common genetic variants and late toxicity, and associations with late toxicity appeared to be tumor site-specific.

The main source of heterogeneity in such meta-analysis is the overall assessment of all kinds of side effects in various cancer types. However, there are two types of RT-induced adverse effects; acute side effects can be observed during RT and within several weeks after RT, while late side effects occur months to years later.<sup>3</sup> Furthermore, different RT-induced side effects may occur in the same irradiation



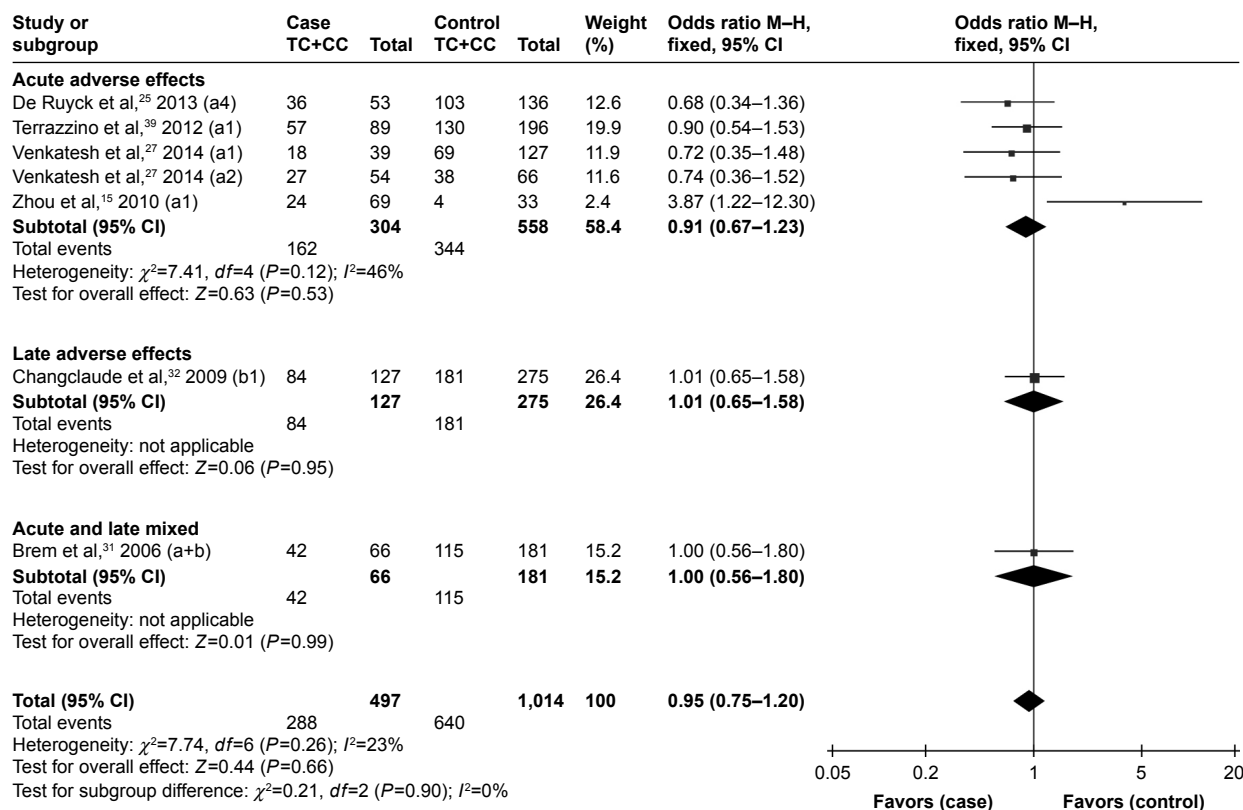


Figure 9 Forest plot for the association between rs3213245 and radiation-induced adverse effects.

Notes: The “case” represents patients with severe radiation-induced side effects and “control” represents patients without or with light radiation-induced side effects. a, acute side effects; a1, skin reactions (dermatitis and erythema); a2, mucositis; a4, dysphagia; b, late side effects; b1, skin and subcutaneous reactions (subcutaneous fibrosis and skin telangiectasia).

Abbreviation: M-H, Mantel-Haenszel.

area, while the same type of side effect can occur in different irradiation areas with the same histological structure. Hence, it is rational to make subgroup analysis in acute or late side effects, the special type of side effects, and irradiation areas.<sup>67</sup> The subgroup analyses evaluating the effect of rs25487 on

radiation pneumonitis or on thoracic irradiation yielded significant heterogeneity, because the only two identified studies on NSCLC reached contrary conclusions. The evaluations of rs25489 on late side effects and pelvic irradiation as well as rs3213245 on acute side effects also yielded significant heterogeneity. The presence of heterogeneity may be caused by the differences in study characteristics such as treatment regimen, evaluation endpoint, and genotyping method. The results are reliable because the pooled results calculated by random-effects model are stable in the sensitivity analysis.

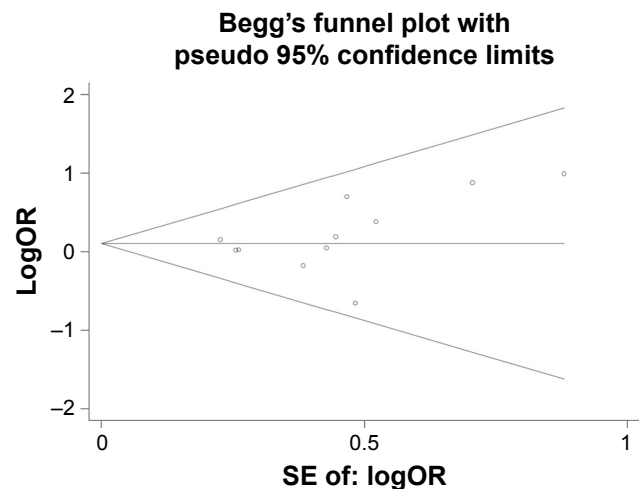


Figure 10 Begg's funnel plot for the effect of rs25487 on radiation-induced skin toxicity.

Note: Circles represent the actually included studies.

Abbreviations: OR, odds ratio; SE, standard error.

### Limitations

Several limitations of the present meta-analysis should be considered. First, many included studies assessed multiple different endpoints, resulting in the same study being evaluated more than one time in one analysis. The “multiple testing problem” reduced the statistical power. Second, the number of trials in some of the subgroups and the sample sizes of some of the studies were relatively small, which also restricted the statistical power. Third, eight studies without sufficient data could not be evaluated by weight in the pooled result, which may cause some potential bias. Furthermore,

data analyses were not stratified by other confounding factors such as ethnicity, genotyping method, radiation dose, or chemotherapy status because of insufficient information from the primary publications.

## Conclusion

The present study, to our knowledge, is the first comprehensive meta-analysis of genetics studies on the association between *XRCC1* polymorphisms and radiation-related adverse effects. In conclusion, the meta-analysis suggests that rs25487 Arg399Gln polymorphism is significantly associated with the risk of acute RT-induced adverse effects such as acute mucositis and acute gastrointestinal and genitourinary toxicity. Patients who received head and neck irradiation with rs25487 Arg399Gln polymorphism were more likely to experience RT-induced side effects. The present study also indicates a radioprotective effect for rs25489 polymorphism, especially in acute side effects or in breast irradiation, but without statistical significance. Well-designed studies with large sample size are needed to be performed to assess the value of *XRCC1* polymorphisms on radiation-induced adverse effects, which can be used clinically to identify radiosensitive patients and predict radiotoxicity.

## Acknowledgment

This work was supported by the Traditional Chinese Medicine Administration of Hebei Province (grant no. 2012018).

## Disclosure

The authors report no conflicts of interest in this work.

## References

- Chen Y, Trotti A, Coleman CN, et al. Adverse event reporting and developments in radiation biology after normal tissue injury: International Atomic Energy Agency consultation. *Int J Radiat Oncol Biol Phys*. 2006;64(5):1442–1451.
- Pignon JP, le Maitre A, Maillard E, Bourhis J; Group M-NC. Meta-analysis of chemotherapy in head and neck cancer (MACH-NC): an update on 93 randomised trials and 17,346 patients. *Radiother Oncol*. 2009;92(1):4–14.
- Citrin D, Cotrim AP, Hyodo F, Baum BJ, Krishna MC, Mitchell JB. Radioprotectors and mitigators of radiation-induced normal tissue injury. *Oncologist*. 2010;15(4):360–371.
- Bentzen SM, Saunders MI, Dische S, Bond SJ. Radiotherapy-related early morbidity in head and neck cancer: quantitative clinical radiobiology as deduced from the CHART trial. *Radiother Oncol*. 2001;60(2):123–135.
- Gruber S, Dorr W. Tissue reactions to ionizing radiation-Oral mucosa. *Mutat Res*. 2016;770(Pt B):292–298.
- Andratschke N, Maurer J, Molls M, Trott KR. Late radiation-induced heart disease after radiotherapy. Clinical importance, radiobiological mechanisms and strategies of prevention. *Radiother Oncol*. 2011;100(2):160–166.
- Stone HB, Coleman CN, Anscher MS, McBride WH. Effects of radiation on normal tissue: consequences and mechanisms. *Lancet Oncol*. 2003;4(9):529–536.
- Andreassen CN. Searching for genetic determinants of normal tissue radiosensitivity—are we on the right track? *Radiother Oncol*. 2010;97(1):1–8.
- Andreassen CN, Dikomey E, Parliament M, West CM. Will SNPs be useful predictors of normal tissue radiosensitivity in the future? *Radiother Oncol*. 2012;105(3):283–288.
- Barnett GC, Coles CE, Elliott RM, et al. Independent validation of genes and polymorphisms reported to be associated with radiation toxicity: a prospective analysis study. *Lancet Oncol*. 2012;13(1):65–77.
- Nakano T, Xu X, Salem AMH, Shoukamy MI, Ide H. Radiation-induced DNA-protein cross-links: mechanisms and biological significance. *Free Radic Biol Med*. 2017;107:136–145.
- Tomkinson AE, Sallmyr A. Structure and function of the DNA ligases encoded by the mammalian *LIG3* gene. *Gene*. 2013;531(2):150–157.
- Seibold P, Behrens S, Schmezer P, et al. *XRCC1* polymorphism associated with late toxicity after radiation therapy in breast cancer patients. *Int J Radiat Oncol Biol Phys*. 2015;92(5):1084–1092.
- Burri RJ, Stock RG, Cesaretti JA, et al. Association of single nucleotide polymorphisms in *SOD2*, *XRCC1* and *XRCC3* with susceptibility for the development of adverse effects resulting from radiotherapy for prostate cancer. *Radiat Res*. 2008;170(1):49–59.
- Zhou L, Xia J, Li H, Dai J, Hu Y. Association of *XRCC1* variants with acute skin reaction after radiotherapy in breast cancer patients. *Cancer Biother Radiopharm*. 2010;25(6):681.
- Higgins JP, Thompson SG. Quantifying heterogeneity in a meta-analysis. *Stat Med*. 2002;21(11):1539–1558.
- Begg CB, Mazumdar M. Operating characteristics of a rank correlation test for publication bias. *Biometrics*. 1994;50(4):1088–1101.
- Egger M, Davey Smith G, Schneider M, Minder C. Bias in meta-analysis detected by a simple, graphical test. *BMJ*. 1997;315(7109):629–634.
- Duval S, Tweedie R. Trim and fill: a simple funnel-plot-based method of testing and adjusting for publication bias in meta-analysis. *Biometrics*. 2000;56(2):455–463.
- Cheuk IW, Yip SP, Kwong DL, Wu VW. Association of *XRCC1* and *XRCC3* gene haplotypes with the development of radiation-induced fibrosis in patients with nasopharyngeal carcinoma. *Mol Clin Oncol*. 2014;2(4):553.
- Li H, You Y, Lin C, et al. *XRCC1* codon 399Gln polymorphism is associated with radiotherapy-induced acute dermatitis and mucositis in nasopharyngeal carcinoma patients. *Radiat Oncol*. 2013;8(1):31.
- Xian Y, He X, Baojian Z, Xu Z, Ge W. DNA repair gene *ERCC1 C118T* polymorphism predicts sensitivity of recurrent esophageal cancer to radiochemotherapy in a Chinese population. *Thorac Cancer*. 2015;6(6):741–748.
- Zhai XM, Hu QC, Gu K, Wang JP, Zhang JN, Wu YW. Significance of *XRCC1* Codon399 polymorphisms in Chinese patients with locally advanced nasopharyngeal carcinoma treated with radiation therapy. *Asia Pac J Clin Oncol*. 2016;12(1):e125–e132.
- Alsbeih G, Al-Harbi N, Al-Hadyan K, El-Sebaie M, Al-Rajhi N. Association between normal tissue complications after radiotherapy and polymorphic variations in *TGFB1* and *XRCC1* genes. *Radiat Res*. 2010;173(4):505–511.
- De Ruyck K, Duprez F, Werbrout J, et al. A predictive model for dysphagia following IMRT for head and neck cancer: introduction of the EMLasso technique. *Radiother Oncol*. 2013;107(3):295–299.
- Pratesi N, Mangoni M, Mancini I, et al. Association between single nucleotide polymorphisms in the *XRCC1* and *RAD51* genes and clinical radiosensitivity in head and neck cancer. *Radiother Oncol*. 2011;99(3):356–361.
- Venkatesh GH, Manjunath VB, Mumbreakar KD, et al. Polymorphisms in radio-responsive genes and its association with acute toxicity among head and neck cancer patients. *PLoS One*. 2014;9(3):e89079.

28. Andreassen CN, Alsner J, Overgaard J, et al. TGFB1 polymorphisms are associated with risk of late normal tissue complications in the breast after radiotherapy for early breast cancer. *Radiother Oncol.* 2005; 75(1):18–21.
29. Andreassen CN, Alsner J, Overgaard M, Overgaard J. Prediction of normal tissue radiosensitivity from polymorphisms in candidate genes. *Radiother Oncol.* 2003;69(2):127–135.
30. Andreassen CN, Alsner J, Overgaard M, Sorensen FB, Overgaard J. Risk of radiation-induced subcutaneous fibrosis in relation to single nucleotide polymorphisms in TGFB1, SOD2, XRCC1, XRCC3, APEX and ATM—a study based on DNA from formalin fixed paraffin embedded tissue samples. *Int J Radiat Biol.* 2006;82(8):577–586.
31. Brem R, Cox DG, Chapot B, et al. The XRCC1 -77T->C variant: haplotypes, breast cancer risk, response to radiotherapy and the cellular response to DNA damage. *Carcinogenesis.* 2006;27(12):2469–2474.
32. Changclaude J, Ambrosone CB, Lilla C, et al. Genetic polymorphisms in DNA repair and damage response genes and late normal tissue complications of radiotherapy for breast cancer. *Br J Cancer.* 2009; 100(10):1680.
33. Changclaude J, Popanda O, Kropp S, et al. Association between polymorphisms in the DNA repair genes, XRCC1, APE1, and XPD and Acute side effects of radiotherapy in breast cancer patients. *Clin Cancer Res.* 2005;11(13):4802–4809.
34. Falvo E, Strigari L, Citro G, et al. SNPs in DNA repair or oxidative stress genes and late subcutaneous fibrosis in patients following single shot partial breast irradiation. *J Exp Clin Cancer Res.* 2012;31(1):7.
35. Giotopoulos G, Symonds RP, Foweraker K, et al. The late radiotherapy normal tissue injury phenotypes of telangiectasia, fibrosis and atrophy in breast cancer patients have distinct genotype-dependent causes. *Br J Cancer.* 2007;96(6):1001–1007.
36. Moullan N, Cox DG, Angele S, Romestaing P, Gerard JP, Hall J. Polymorphisms in the DNA repair gene XRCC1, breast cancer risk, and response to radiotherapy. *Cancer Epidemiol Biomarkers Prev.* 2003; 12(11 Pt 1):1168–1174.
37. Mumbreakar KD, Bola Sadashiva SR, Kabekkodu SP, et al. Genetic variants in CD44 and MAT1A confer susceptibility to acute skin reaction in breast cancer patients undergoing radiation therapy. *Int J Radiat Oncol Biol Phys.* 2017;97(1):118.
38. Suga T, Ishikawa A, Kohda M, et al. Haplotype-based analysis of genes associated with risk of adverse skin reactions after radiotherapy in breast cancer patients. *Int J Radiat Oncol Biol Phys.* 2007;69(3): 685–693.
39. Terrazzino S, La MP, Gambaro G, et al. Common variants of GSTP1, GSTA1, and TGFβ1 are associated with the risk of radiation-induced fibrosis in breast cancer patients. *Int J Radiat Oncol Biol Phys.* 2012; 83(2):504–511.
40. Terrazzino S, Mattina PL, Masini L, et al. Common variants of eNOS and XRCC1 genes may predict acute skin toxicity in breast cancer patients receiving radiotherapy after breast conserving surgery. *Radiother Oncol.* 2012;103(2):199–205.
41. Zschenker O, Raabe A, Boeckelmann IK, et al. Association of single nucleotide polymorphisms in ATM, GSTP1, SOD2, TGFB1, XPD and XRCC1 with clinical and cellular radiosensitivity. *Radiother Oncol.* 2010;97(1):26–32.
42. Falvo E, Strigari L, Citro G, et al. Dose and polymorphic genes xrcc1, xrcc3, gst play a role in the risk of article developing erythema in breast cancer patients following single shot partial breast irradiation after conservative surgery. *BMC Cancer.* 2011;11:291.
43. Mangoni M, Bisanzi S, Carozzi F, et al. Association between genetic polymorphisms in the XRCC1, XRCC3, XPD, GSTM1, GSTT1, MSH2, MLH1, MSH3, and MGMT genes and radiosensitivity in breast cancer patients. *Int J Radiat Oncol Biol Phys.* 2011;81(1):52–58.
44. Raabe A, Derda K, Reuther S, et al. Association of single nucleotide polymorphisms in the genes ATM, GSTP1, SOD2, TGFB1, XPD and XRCC1 with risk of severe erythema after breast conserving radiotherapy. *Radiat Oncol.* 2012;7:65.
45. Damaraju S, Murray D, Dufour J, et al. Association of DNA repair and steroid metabolism gene polymorphisms with clinical late toxicity in patients treated with conformal radiotherapy for prostate cancer. *Clin Cancer Res.* 2006;12(8):2545–2554.
46. Langsenlehner T, Renner W, Gerger A, et al. Association between single nucleotide polymorphisms in the gene for XRCC1 and radiation-induced late toxicity in prostate cancer patients. *Radiother Oncol.* 2011; 98(3):387–393.
47. Popanda O, Marquardt JU, Chang-Claude J, Schmezer P. Genetic variation in normal tissue toxicity induced by ionizing radiation. *Mutat Res.* 2009;667(1–2):58–69.
48. Usmani N, Leong N, Martell K, et al. Single-nucleotide polymorphisms studied for associations with urinary toxicity from (125I) prostate brachytherapy implants. *Brachytherapy.* 2014;13(3):285–291.
49. De Ruyck K, Van EM, Claes K, et al. Radiation-induced damage to normal tissues after radiotherapy in patients treated for gynecologic tumors: association with single nucleotide polymorphisms in XRCC1, XRCC3, and OGG1 genes and in vitro chromosomal radiosensitivity in lymphocytes. *Int J Radiat Oncol Biol Phys.* 2005;62(4):1140.
50. Ishikawa A, Suga T, Shoji Y, et al. Genetic variants of NPAT-ATM and AURKA are associated with an early adverse reaction in the gastrointestinal tract of patients with cervical cancer treated with pelvic radiation therapy. *Int J Radiat Oncol Biol Phys.* 2011;81(4):1144–1152.
51. Sakano S, Hinoda Y, Sasaki M, et al. Nucleotide excision repair gene polymorphisms may predict acute toxicity in patients treated with chemoradiotherapy for bladder cancer. *Pharmacogenomics.* 2010;11(10): 1377–1387.
52. Duldulao MP, Lee W, Nelson RA, et al. Gene polymorphisms predict toxicity to neoadjuvant therapy in patients with rectal cancer. *Cancer.* 2013;119(5):1106–1112.
53. Smith JJ, Wasserman I, Milgrom SA, et al. Single nucleotide polymorphism TGFβ1 R25P correlates with acute toxicity during neoadjuvant chemoradiotherapy in rectal cancer patients. *Int J Radiat Oncol Biol Phys.* 2017;97(5):924.
54. Tucker SL, Li M, Xu T, et al. Incorporating single-nucleotide polymorphisms into the Lyman model to improve prediction of radiation pneumonitis. *Int J Radiat Oncol Biol Phys.* 2013;85(1):251–257.
55. Yin M, Liao Z, Liu Z, et al. Functional polymorphisms of base excision repair genes XRCC1 and APEX1 predict risk of radiation pneumonitis in patients with non-small cell lung cancer treated with definitive radiation therapy. *Int J Radiat Oncol Biol Phys.* 2011;81(3):e67–e73.
56. Yoon HH, Catalano P, Gibson MK, et al. Genetic variation in radiation and platinum pathways predicts severe acute radiation toxicity in patients with esophageal adenocarcinoma treated with cisplatin-based preoperative radiochemotherapy: results from the Eastern Cooperative Oncology Group. *Cancer Chemother Pharmacol.* 2011;68(4):863–870.
57. Azria D, Ozsahin M, Kramer A, et al. Single nucleotide polymorphisms, apoptosis, and the development of severe late adverse effects after radiotherapy. *Clin Cancer Res.* 2008;14(19):6284–6288.
58. Horton JK, Watson M, Stefanick DF, Shaughnessy DT, Taylor JA, Wilson SH. XRCC1 and DNA polymerase beta in cellular protection against cytotoxic DNA single-strand breaks. *Cell Res.* 2008;18(1): 48–63.
59. Andreassen CN, Alsner J. Genetic variants and normal tissue toxicity after radiotherapy: a systematic review. *Radiother Oncol.* 2009;92(3): 299–309.
60. Rattay T, Talbot CJ. Finding the genetic determinants of adverse reactions to radiotherapy. *Clin Oncol (R Coll Radiol).* 2014;26(5):301–308.
61. West CM, Barnett GC. Genetics and genomics of radiotherapy toxicity: towards prediction. *Genome Med.* 2011;3(8):52.
62. Ghazali N, Shaw RJ, Rogers SN, Risk JM. Genomic determinants of normal tissue toxicity after radiotherapy for head and neck malignancy: a systematic review. *Oral Oncol.* 2012;48(11):1090–1100.
63. Andreassen CN. Can risk of radiotherapy-induced normal tissue complications be predicted from genetic profiles? *Acta Oncol.* 2005;44(8): 801–815.

64. Zhou Y, Zhou W, Liu Q, et al. XRCC1 R399Q polymorphism and risk of normal tissue injury after radiotherapy in breast cancer patients. *Tumour Biol.* 2014;35(1):21–25.
65. Xie XX, Ouyang SY, Jin HK, Wang H, Zhou JM, Hu BQ. Predictive value of XRCC1 gene polymorphisms for side effects in patients undergoing whole breast radiotherapy: a meta-analysis. *Asian Pac J Cancer Prev.* 2012;13(12):6121–6128.
66. Barnett GC, Thompson D, Fachal L, et al. A genome wide association study (GWAS) providing evidence of an association between common genetic variants and late radiotherapy toxicity. *Radiother Oncol.* 2014; 111(2):178–185.
67. Andreassen CN, Barnett GC, Langendijk JA, et al. Conducting radiogenomic research—do not forget careful consideration of the clinical data. *Radiother Oncol.* 2012;105(3):337–340.

### OncoTargets and Therapy

## Publish your work in this journal

OncoTargets and Therapy is an international, peer-reviewed, open access journal focusing on the pathological basis of all cancers, potential targets for therapy and treatment protocols employed to improve the management of cancer patients. The journal also focuses on the impact of management programs and new therapeutic agents and protocols on

Submit your manuscript here: <http://www.dovepress.com/oncotargets-and-therapy-journal>

patient perspectives such as quality of life, adherence and satisfaction. The manuscript management system is completely online and includes a very quick and fair peer-review system, which is all easy to use. Visit <http://www.dovepress.com/testimonials.php> to read real quotes from published authors.

Dovepress