

Research Article

Confocal Microscopy Predicts the Risk of Recurrence and Malignant Transformation of Mucocutaneous Neurofibromas in NF-1: An Observational Study

Giuseppe Giudice,¹ Giorgio Favia,¹ Angela Tempesta ,²
Luisa Limongelli ,² and Michelangelo Vestita ¹

¹Section of Plastic and Reconstructive Surgery, Department of Emergency and Organ Transplantation, University of Bari, 11, Piazza Giulio Cesare, Bari, 70124, Italy

²Department of Interdisciplinary Medicine, Complex Operating Unit of Odontostomatology, “Aldo Moro” University, Piazza G. Cesare 11, 70124 Bari, Italy

Correspondence should be addressed to Michelangelo Vestita; michelangelovestita@gmail.com

Received 31 January 2018; Revised 15 July 2018; Accepted 24 July 2018; Published 9 September 2018

Academic Editor: E. Helen Kemp

Copyright © 2018 Giuseppe Giudice et al. This is an open access article distributed under the Creative Commons Attribution License, which permits unrestricted use, distribution, and reproduction in any medium, provided the original work is properly cited.

From 2005 to 2010, 20 consecutive patients with fully manifested neurofibromatosis type 1 (NF1) underwent elective neurofibroma resection at our institution (Departments of Plastic Surgery and of Odontostomatology). Specimens were photographed under optical microscope and confocal laser scanning microscopy (CLSM) with ultra-high accuracy of detail, including depth of field. Patients were followed up for a minimum of 4 years and up to a maximum of 12 years, postsurgery. While all nonrecurring lesions showed intense fluorescence, six of the seven lesions with absence of fluorescence under CLSM recurred at a mean of 5.5 years after surgical excision. Among the re-excised lesions, 3 were diagnosed as malignant at the subsequent removal. Despite the limitation of a small cohort, CLSM appears to be a simple and low-cost technique to differentiate forms of neurofibromas with low and high risk of recurrence and malignant degeneration.

1. Introduction

We retrospectively describe our 5-year experience in using confocal laser scanning microscopy (CLSM) to differentiate the morphological features of Schwann cells at the time of first resection of neurofibromas arising in NF1 patients (study registration number: [researchregistry3681](https://www.researchregistry.com/record/researchregistry3681)). Based on our experience, we propose that CLSM could be a simple low-cost technique to differentiate neurofibromas with low or high risk of recurrence and malignant degeneration.

2. Report

From 2005 to 2010, 20 consecutive patients with fully manifested neurofibromatosis type 1 (NF1) underwent elective neurofibroma resection at our institution (Departments of Plastic Surgery and of Odontostomatology). The following

demographic and clinical data were retrospectively included in our analysis: age, sex, location and type of neurofibroma excised, family history of NF1, recurrence after excision, time frame of recurrence, malignant degeneration, and other associated pathologies. All patients underwent wide (1.5 to 2 cm margins) surgical excision of burdening, symptomatic neurofibromas, with consequent direct surgical reconstruction of the defects, using local flaps or skin grafts. Excised specimens were fixed in 10% buffered formalin, paraffin-embedded, and cut in 8-12 μ m thick sections and stained with hematoxylin and eosin, Masson's trichrome, and picosirius red. Histological examination was carried out using Nikon Eclipse E-600 microscope, equipped with Argon-ion and Helium-neon lasers emitting 488 and 543 nm wavelengths, which allows both optical and confocal laser scanning analyses. Specimens were photographed and images were

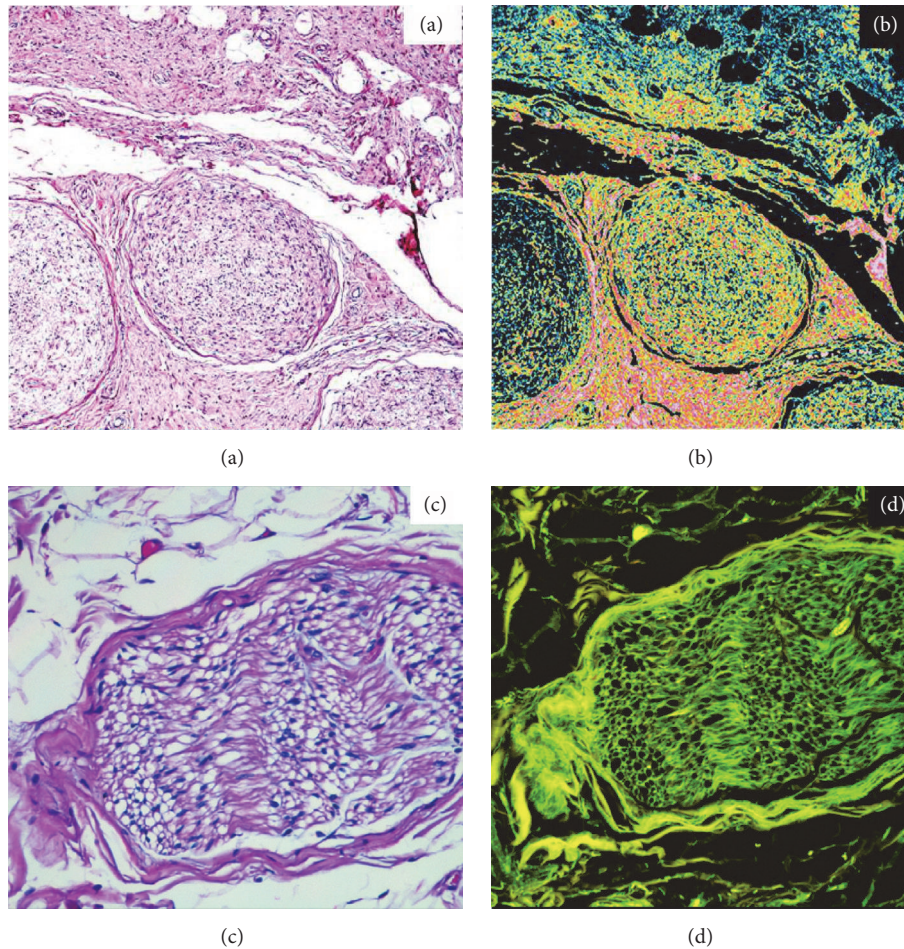


FIGURE 1: 45X. Traditional optical (a) and confocal laser scanning (b) analyses showing well differentiated Schwann cells in a multinodular plexiform neurofibroma and their intense fluorescence. Fields (c) and (d) show a normal nerve as comparison, respectively, in traditional optic and confocal laser scanning. A normal nerve also shows intense fluorescence. However, several features separate a neurofibroma from a normal nerve: an increase in cell density, an increase in the number of mitosis, and an increase in the number of spindle shaped cells, nuclear anomalies, and the presence of cells of a different nature (such as macrophages, mast cells, and histiocytes).

processed using the EC-1 software, with ultra-high accuracy of detail, including depth of field.

Patient characteristics are summarized in Table 1.

Of the 20 lesions, 6 were subcutaneous/nodular, 9 were plexiform and 5 were diffuse. Schwann cells with similar morphological aspects under conventional microscopic investigation showed different patterns of endogenous autofluorescence during CLSM analyses at the time of first resection. These differences are due to their differentiation grade and to the percentage of residual neurofibromin in the cytoplasm: differentiated cells, rich in neurofibromin, showed an intense red and green fluorescence (Figures 1 and 2); less differentiated cells with minor neurofibromin content showed minimal fluorescence (Figure 3). Of the 20 lesions, 13 showed a high/medium grade of fluorescence, instead 7 showed a lack of fluorescence.

Patients were followed up for a minimum of 4 years and up to a maximum of 12 years, postsurgery. Six of the 7 lesions that showed a lack of fluorescence recurred at a mean of 5.5 years after surgical excision. The clinical-histological type of

recurrent lesions was as follows: 2 subcutaneous/nodular, 2 plexiform, and 2 diffuse lesions. All recurrent lesions were subsequently re-excised with larger margins, except in case 1 (Table 1) in which partial resolution of the neurofibroma was achieved with concomitant chemotherapy for the treatment of advanced melanoma [1]. Among the re-excised lesions, 3 were diagnosed as malignant at the subsequent removal (1 nodular, 1 diffuse, and 1 subcutaneous lesions). All recurring lesions showed absence of fluorescence under CLSM, with the exception of one case showing minimal fluorescence.

3. Discussion

CLSM appears to be a simple and low-cost technique to differentiate morphological features of apparently identical populations of Schwann cells and, thus, to differentiate forms of neurofibromas with low and high risk of recurrence and malignant degeneration. Specifically, we observed that neurofibromas that show negative laser fluorescence have a greater tendency to develop local recurrence and a greater

TABLE 1: Characteristics of the studied population and relative CLSM data.

Age	Sex	Excised neurofibroma site	Excised neurofibroma histo-type	Oral lesions	NF family history	Comorbidities	Recurrence	Time of recurrence (years)	Malignant degeneration	Schwann cells fluorescence
31	m	trunk	plexiform	x	x	advanced melanoma	x (regression with chemo)	6		none
47	f	lower limbs	subcutaneous/nodular							high
47	f	upper limb	diffuse	x			x	4	x	none
26	m	lower limbs	plexiform		x					high
42	f	upper limb	diffuse	x	x					high
73	f	trunk	plexiform	x		arterial hypertension, diabetes				high
44	m	trunk	Subcutaneous/nodular		x					high
16	m	oral	plexiform	x						high
59	f	upper limb	Subcutaneous/nodular	x			x	8		minimal
46	f	oral	plexiform	x						high
53	f	lower limbs	diffuse		x					high
53	f	face	plexiform			hypothyroidism				high
35	f	trunk	diffuse				x	7		none
41	m	oral	Subcutaneous/nodular	x	x					high
55	2	trunk	plexiform	x	x	arterial hypertension	x	3	x	none
50	2	face	diffuse	x						high
42	2	lower limbs	Subcutaneous/nodular		x					high
43	1	upper limb	plexiform	x						high
51	2	oral	Subcutaneous/nodular	x	x	arterial hypertension	x	5	x	none
47	2	lower limbs	plexiform		x					high

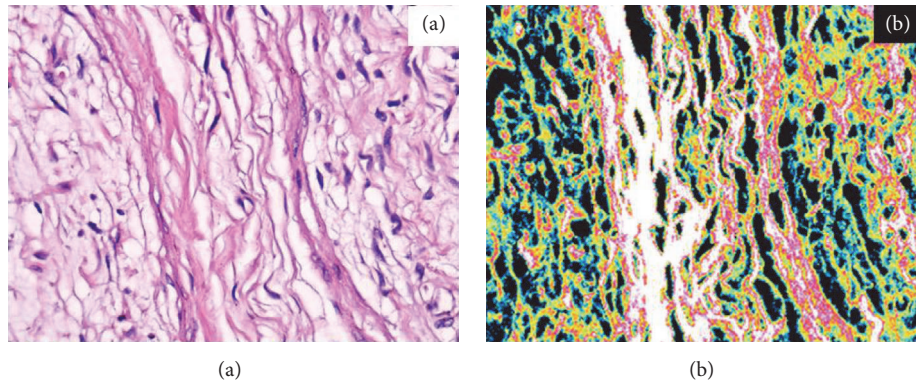


FIGURE 2: 150X. Traditional optical (a) and confocal laser scanning (b) analyses of a subcutaneous/nodular neurofibroma and its intense fluorescence due to the high content of neurofibromin in the well differentiated Schwann cells.

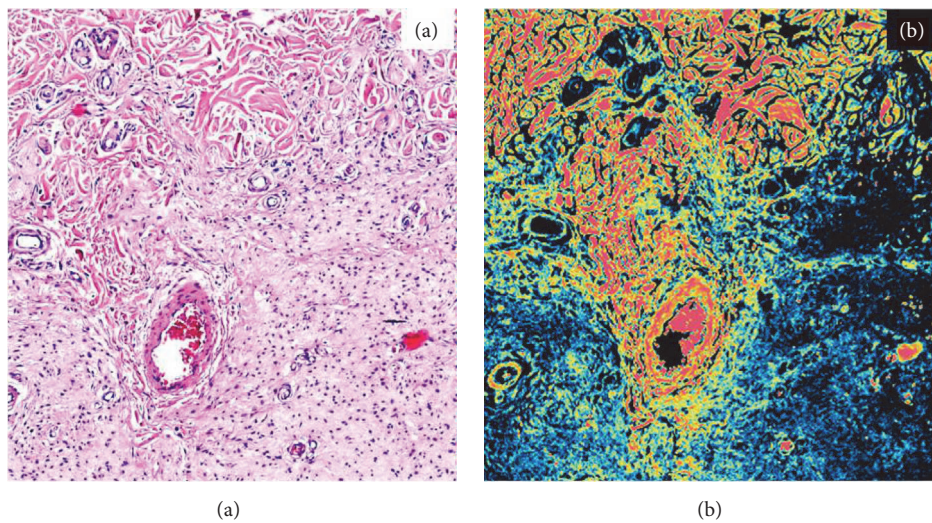


FIGURE 3: 50X. Traditional (a) and confocal laser scanning (b) analyses of an infiltrating plexiform neurofibroma with lack of fluorescence of proliferating Schwann cells in opposition with the high fluorescence of the fibroblasts of the deep dermis.

risk of malignant degeneration. Of note, there was no correlation between the incidence of recurrence\malignant degeneration and the clinical\histological type of neurofibroma in our cohort. These observations might tentatively be linked to peculiar aspects of the maturation and differentiation of Schwann cells in neurofibromas, which might translate into different concentrations of the cytoplasmatic content of neurofibromin, arising from differences in the morphological expression of genetic alterations of the NF1 gene (monoallelic or biallelic) [2–6] and the neural microenvironment [7]. Of course this is just speculation at present, and further immunohistochemical studies will need to demonstrate the possible link between neurofibromin content, fluorescence, and neurofibroma behavior. As a supplementary observation, the occurrence of a case of melanoma in our limited cohort seems to support the role NF1 and neurofibromin in neural crest-derived neoplasms, such as melanoma and other tumors [8–12]. More notable was the spontaneous partial regression of most neurofibromas (including a recurrent lesion after excision) when the patient underwent chemotherapy for his advanced melanoma [1].

In conclusion, despite the limitation of a small cohort, our preliminary data are encouraging and merit further assessment in a larger multicentre study. A correlation study to investigate the relationship between CLSM and molecular and genetic markers in Schwann cells would also be beneficial to further clarify the underlying structural and behavioral differences in these apparently indistinguishable cells.

Data Availability

The data used to support the findings of this study are available in excel format archived at our institution and can be provided if necessary. Access to discrete patients' clinical records is permitted given patient approval and in accordance to hospital regulations.

Additional Points

(i) Confocal laser scanning microscopy might be able to differentiate the morphological features of Schwann cells in neurofibromas. Absence of fluorescence in Schwann cells was

found in neurofibromas which later recur or undergo malignant degeneration. (ii) Confocal laser scanning microscopy could be used to identify neurofibromas that tend to recur or to degenerate and therefore need a more radical surgical management or closer follow-up.

Conflicts of Interest

The authors declare that they have no conflicts of interest.

References

- [1] M. Guida, A. Cramarossa, E. Fistola et al., “High activity of sequential low dose chemo-modulating Temozolomide in combination with Fotemustine in metastatic melanoma. A feasibility study,” *Journal of Translational Medicine*, vol. 8, article no. 115, 2010.
- [2] N. Ratner and S. J. Miller, “A RASopathy gene commonly mutated in cancer: The neurofibromatosis type 1 tumour suppressor,” *Nature Reviews Cancer*, vol. 15, no. 5, pp. 290–301, 2015.
- [3] A. Cannon, M. Chen, P. Li et al., “Cutaneous neurofibromas in Neurofibromatosis type I: a quantitative natural history study,” *Orphanet Journal of Rare Diseases*, vol. 13, no. 1, 2018.
- [4] C. L. Monroe, S. Dahiya, and D. H. Gutmann, “Dissecting Clinical Heterogeneity in Neurofibromatosis Type 1,” *Annual Review of Pathology: Mechanisms of Disease*, vol. 12, pp. 53–74, 2017.
- [5] C. S. Higham, E. Dombi, A. Rogiers et al., “The characteristics of 76 atypical neurofibromas as precursors to neurofibromatosis 1 associated malignant peripheral nerve sheath tumors,” *Neuro-Oncology*, vol. 20, no. 6, pp. 818–825, 2018.
- [6] F. Cali, V. Chiavetta, G. Ruggeri et al., “Mutation spectrum of in Italian patients with neurofibromatosis type 1 using Ion Torrent PGM platform,” *Eur J Med Genet*, vol. 60, no. 2, pp. 93–99, 2017.
- [7] C.-P. Liao, S. Pradhan, Z. Chen, A. J. Patel, R. C. Booker, and L. Q. Le, “The role of nerve microenvironment for neurofibroma development,” *Oncotarget*, vol. 7, no. 38, pp. 61500–61508, 2016.
- [8] M. Mahalingam, “NF1 and Neurofibromin: Emerging Players in the Genetic Landscape of Desmoplastic Melanoma,” *Advances in Anatomic Pathology*, vol. 24, no. 1, pp. 1–14, 2017.
- [9] Á. Nagy, F. Garzuly, and B. Kálmbán, “Pathogenic alterations within the neurofibromin gene in various cancers,” *Magy Onkol*, vol. 61, no. 4, pp. 327–336, 2017.
- [10] S. J. Howell, K. Hockenhull, Z. Salih, and D. G. Evans, “Increased risk of breast cancer in neurofibromatosis type 1: Current insights,” *Breast Cancer : Targets and Therapy*, vol. 9, pp. 531–536, 2017.
- [11] C. Philpott, H. Tovell, I. M. Frayling, D. N. Cooper, and M. Upadhyaya, “The NF1 somatic mutational landscape in sporadic human cancers,” *Human Genomics*, vol. 11, no. 1, 2017.
- [12] M. Kiuru and K. J. Busam, “The NF1 gene in tumor syndromes and melanoma,” *Laboratory Investigation*, vol. 97, no. 2, pp. 146–157, 2017.